



LED MAGNETIC MOUNT TROFFER RETROFIT KIT

Premium Series

► **DESIGN & OPTIONS** - LED MAGNETIC MOUNT TROFFER RETROFIT KIT is designed to replace the ballast and tubes in 1'x4', 2'x2' and 2'x4' fluorescent troffers and existing industrial strips or wrap fixtures. This fixture has lightweight and durable polycarbonate to ensure long life, aluminum on the back to provide great heat dissipation, LED strips, and a 0-10V dimmable driver. It comes with a 120-277V and a 4000K or 5000K color temperature.

► **INSTALLATION** - The magnets on the back of the strip around the perimeter provide secure mounting and ensure a fast and easy installation process. In just a few minutes your existing troffers, strips or wraps can be converted into energy-efficient, long-lasting LED lights while preserving the look of your space. Simply attach the LED MAGNETIC MOUNT TROFFER RETROFIT KIT inside the existing fixture. Refer to install instructions for detailed steps.

► **APPLICATION** - This LED MAGNETIC MOUNT TROFFER RETROFIT KIT is perfect for offices, lobbies, hallways, classrooms, conference rooms, school facilities, libraries, showrooms, airports, shopping malls, workshops, healthcare facilities and so on! The fixture is Dry location rated and can operate in temperatures between -40+122°F (-40+50°C).

► **ENERGY SAVINGS & EFFICIENCY** - This fixture provides a lumen output that is equal to or higher than traditional fluorescent fixtures and can cut your electric bill by up to 80% instantly. With a lifespan of 216,000 hours, these fixtures are made to last decades under normal operation! This fixture will save you a significant amount of money in its lifetime.

► **CERTIFICATION & WARRANTY** - Buy with confidence: ASD provides a 5-year warranty along with ETL and DLC Premium certifications to guarantee top quality products and safety!

Top US certifications allow participation in rebates; please check the rebate programs available in your state.

Catalog number	
Notes	
Type	



PRODUCT LEGEND:

Family	Size	Dimmable	Watts	CCT	Series
ASD-LRKTR	X	D	XX	XX	PRM
LED Magnetic Mount Troffer Retrofit Kit	2 = 2 ft 4 = 4 ft	Dimmable	25 = 25 W 36 = 36 W	40 = 4,000 K 50 = 5,000 K	Premium

LED MAGNETIC MOUNT TROFFER RETROFIT KIT:

Model	Watts	Voltage	Dimmable	Lumens	CCT	Dimensions (LxWxH)
ASD-LRKTR-2D2550-PRM	25 W	120-277 V	0-10 V	3,377 lm	5,000 K	19 5/8" x 1 1/4" x 5/8"
ASD-LRKTR-4D3640-PRM	36 W	120-277 V	0-10 V	4,931 lm	4,000 K	43 1/4" x 1 1/4" x 5/8"
ASD-LRKTR-4D3650-PRM	36 W	120-277 V	0-10 V	5,062 lm	5,000 K	43 1/4" x 1 1/4" x 5/8"

ORDERING INFORMATION:

Model	UPC	Pcs in Middle box	Middle box Size	Middle box Weight	GTIN 14 Middle box	Pcs per Carton	Carton Size	Carton Weight	GTIN 14 Carton
ASD-LRKTR-2D2550-PRM	819201026241	2	26.2" x 7.6" x 1.7"	2.3 lb	10819201026248	20	26.7" x 15.7" x 9.1"	25.4 lb	20819201026245
ASD-LRKTR-4D3640-PRM	810050731539	2	45.1" x 7.6" x 1.7"	3.5 lb	10810050731536	20	45.6" x 15.7" x 9.1"	38.1 lb	20810050731533
ASD-LRKTR-4D3650-PRM	819201026258	2	45.1" x 7.6" x 1.7"	3.5 lb	10819201026255	20	45.6" x 15.7" x 9.1"	38.1 lb	20819201026252

For most up-to-date spec sheets please refer to asd-lighting.com

ASD LIGHTING CORP

E-mail: orders@asd-lighting.com | Web site: www.asd-lighting.com





LED MAGNETIC MOUNT TROFFER RETROFIT KIT

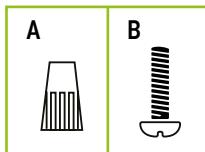
Premium Series

PRODUCT SPECIFICATIONS:

Construction & Materials			
Lens	Aluminum		
Finish Color	Silver		
Weight	ASD-LRKTR-2D2550-PRM	0.9 lb (0.4 kg)	1.4 lb (0.7 kg)
	ASD-LRKTR-4D3640-PRM		
	ASD-LRKTR-4D3650-PRM		
Environmental System			
Work Environment	Suitable for Dry Locations, IP20		
Operating Temperature	-40°F to 122°F (-40°C to +50°C)		
L-70 Life	R > 36,000 hrs; C > 216,000 hrs		
Optical System			
Luminous Flux	ASD-LRKTR-2D2550-PRM	3,377 lm	
	ASD-LRKTR-4D3640-PRM	4,931 lm	
	ASD-LRKTR-4D3650-PRM	5,062 lm	
Color Temperature	4,000 K; 5,000 K		
CRI	> 80		
Electrical System			
Input Voltage	120-277 V		
Max input current	ASD-LRKTR-2D2550-PRM	0.25 A	0.36 A
	ASD-LRKTR-4D3640-PRM		
	ASD-LRKTR-4D3650-PRM		
Inrush current (Action time)	ASD-LRKTR-2D2550-PRM	6.5 A (0.2 S)	8 A (0.4 S)
	ASD-LRKTR-4D3640-PRM		
	ASD-LRKTR-4D3650-PRM		
AC input range	min 90 V max 305 V		
Off State Power	0 W		
Surge protection	4 kV		
Power Consumption	ASD-LRKTR-2D2550-PRM	25 W	36 W
	ASD-LRKTR-4D3640-PRM		
	ASD-LRKTR-4D3650-PRM		
Power Factor	≥ 0.9		
Output voltage	42 V		
Max output current	ASD-LRKTR-2D2550-PRM	530 mA	890 mA
	ASD-LRKTR-4D3640-PRM		
	ASD-LRKTR-4D3650-PRM		
LED Driver Class	Class 2		
Regular and Voluntary Certifications			
5-year limited warranty			
DesignLights Consortium (DLC) listed (Classification: Premium)			
Main: Indoor Luminaires			
General Application: Troffer			
Primary Use: Luminaires for Ambient Lighting of Interior Commercial Spaces			
cETLus certified 4010110			

PACKAGE CONTENTS:

Description	Q-ty
LED Magnetic Mount Troffer Retrofit Kit	2
Wire nuts (A)	8
Screws (B)	12
Box	1
Cut sheet	2



INSTALLATION GUIDE

IMPORTANT SAFETY INFORMATION:

Please read all the instructions below before installation.

- ▶ Make sure that the supply voltage corresponds to the rated product voltage.
- ▶ The product must be installed by a qualified electrician in accordance with the National Electrical Code and corresponding local codes.
- ▶ If the product is damaged, do not use it.

⚠ WARNING

RISK OF PERSONAL INJURY – READ and follow all WARNINGS and installation instructions.

Keep or give to the owner for future reference.

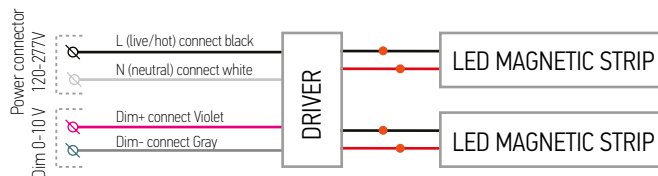
Risk of cuts: Wear gloves to prevent cuts or abrasions when removing from carton, handling, installing, and maintaining this product.

Risk of electric shock: This product must be installed in accordance with the applicable installation code by a person familiar with the construction and operation of the product and the hazards involved.

Risk of Fire: Minimum 194°F supply conductors. Consult a qualified electrician to ensure correct branch circuit conductor.

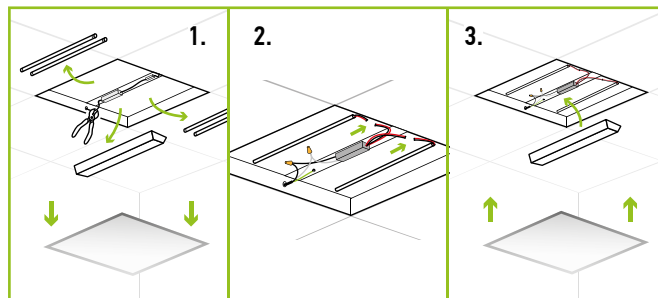
ASD® assumes no responsibility for claims arising out of improper or careless installation or handling of this product.

ELECTRICAL SCHEMATIC DIAGRAM:



INSTALLATION STEPS:

1. Cut off the power to the existing troffer. Detach the lens and remove fluorescent bulbs and the original ballast.
2. Install the LED driver in place of the original ballast, use screws for secure installation. Attach the magnetic LED strips into the troffer housing.
3. Install the ballast cover over the driver. Reattach the original lens. Turn on the power and test.



For most up-to-date spec sheets please refer to asd-lighting.com

ASD LIGHTING CORP

E-mail: orders@asd-lighting.com | Web site: www.asd-lighting.com

