



LED Seamless VaporProof Fixture

Premium Series & Emergency Premium Series

ASD Lighting Corp has been a leader in Vapor tight fixtures and is now offering a Vapor proof fixture with a built in emergency back up. The EMB is wired from the factory and provides 120 minutes of emergency power in the case of power failure. These are great fixtures for any application where safety is paramount and a well protected fixture is required. They also come with a corded lead for easy installation.

Catalog number	
Notes	
Type	

FEATURES AND BENEFITS:

- ▶ Low energy consumption
- ▶ Contemporary design
- ▶ Polycarbonate body
- ▶ 5,000K available
- ▶ Luminous efficiency 130 lm/W
- ▶ 2 foot cord
- ▶ Surface mounted luminaire
- ▶ Suitable for Wet Locations
- ▶ L-70 Life > 206,000 hrs
- ▶ cETLus listed
- ▶ 5-year limited warranty



ORDERING MATRIX:

Family	Modification	Lens	Size	Dimmable	Watts	CCT	Emergency	Series
ASD-LVP	3S	M	X	N	XX	XX	EM	PRM
LED VaporProof		Translucent white lens	4 = 4 ft	Non-dimmable	38 = 38 W	50 = 5,000 K		Premium

LED SEAMLESS VAPORPROOF FIXTURE:

Model	Type	Watts	Dimming	CCT	Lumens	Dimensions (LxWxH)	Cord
ASD-LVP3SM-4N3850PRM	4 ft	38 W	NO	5,000 K	5,000 lm	49 1/4" x 2 1/2" x 3 1/2"	2 ft
ASD-LVP3SM-4N3850-EM-PRM	4 ft	38 W	NO	5,000 K	5,000 lm	49 1/4" x 2 1/2" x 3 1/2"	2 ft



LED Seamless VaporProof Fixture

Premium Series & Emergency Premium Series

PRODUCT SPECIFICATIONS:

Construction & Materials		
Lens	Translucent white lens	
Housing	Polycarbonate white lens	
Finish Color	White	
Weight	ASD-LVP3SM-4N3850PRM	4.52 lbs (2.05 kg)
	ASD-LVP3SM-4N3850-EM-PRM	6.72 lbs (3.05 kg)
Environmental System		
Work Environment	Suitable for Wet Locations, IP65	
Operating Temperature	-4°F to 122°F (-20°C to 50°C)	
L-70 Life	> 206,000 hrs	
Optical System		
Luminous Flux	ASD-LVP3SM-4N3850PRM	5,000 lm
	ASD-LVP3SM-4N3850-EM-PRM	5,000 lm
Color Temperature	5,000 K	
CRI	>80	
Electrical System		
Input Voltage	100-277VAC 50/60 Hz	
Max input current	ASD-LVP3SM-4N3850PRM	0.4 A
	ASD-LVP3SM-4N3850-EM-PRM	0.45 A
Inrush current	ASD-LVP3SM-4N3850PRM	50 A
	ASD-LVP3SM-4N3850-EM-PRM	100 A
Action time (Inrush current)	0.05 S	
AC input range	min 100 V max 300 V	
Off State Power	0 W	
Power Consumption	38 W	
Power Factor	≥ 0.9	
Output voltage	ASD-LVP3SM-4N3850PRM	72 V
	ASD-LVP3SM-4N3850-EM-PRM	42 V
Max output current	ASD-LVP3SM-4N3850PRM	250 mA
	ASD-LVP3SM-4N3850-EM-PRM	900 mA
Emergency system		
Battery charging time	24 hours	
Emergency operation time	≥ 120 minutes	
Emergency watts	12 W	
Emergency Luminous Flux	1,680 lm	
Regular and Voluntary Certifications		
5-year limited warranty		
cETLus certified		

The LED Seamless Vapor Proof fixture is designed to install as a surface mounted luminaires.

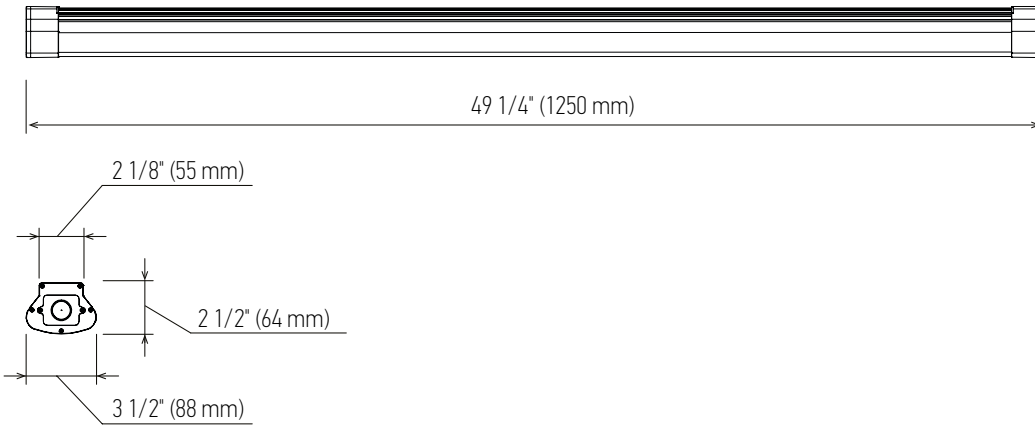
BATTERY BACK-UP INFORMATION

Battery capacity	Max emergency output power	Emergency current	Emergency operation time	Battery voltage	Full charge/discharge cycles
2,600 mA	12 W	300 mA	> 120 minutes	14.8 V	500 cycles

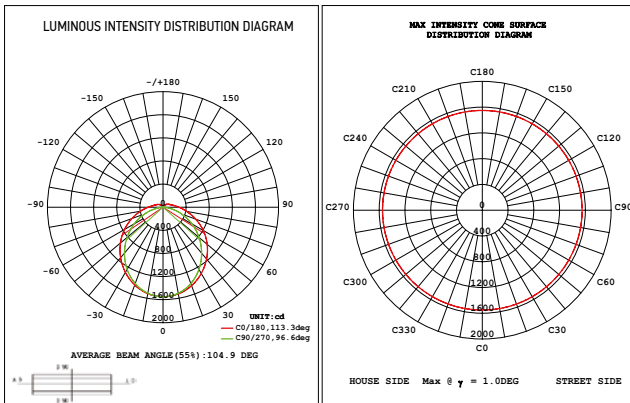


LED Seamless VaporProof Fixture

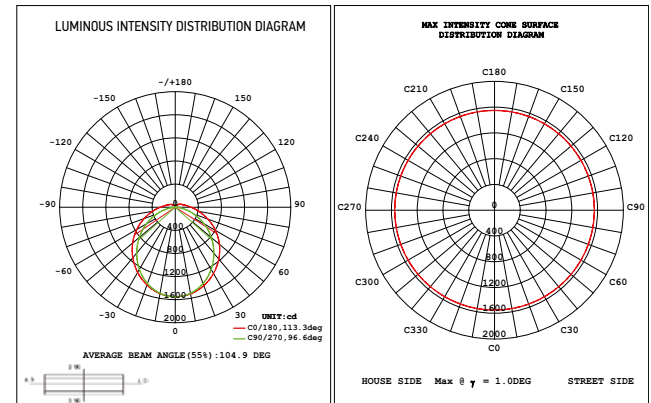
Premium Series & Emergency Premium Series



ASD-LVP3SM-4N3850PRM



ASD-LVP3SM-4N3850-EM-PRM



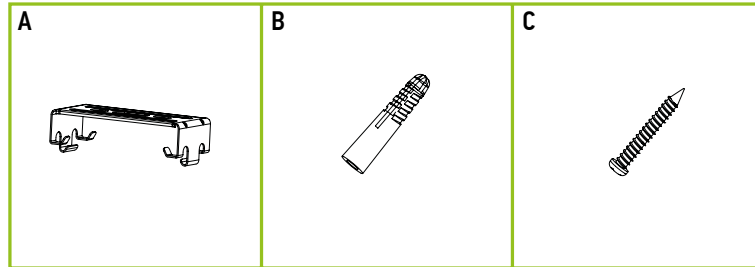


LED Seamless VaporProof Fixture

Premium Series & Emergency Premium Series

PACKAGE CONTENTS:

Description	Q-ty
LED Seamless Vapor Proof Fixture	1
Mounting brackets (A)	2
Expansion Plugs (B)	4
Screws (C)	4
Box	1
Installation Instructions	1



EMERGENCY OPERATION MODE:

When the AC power cuts off, the emergency driver detects the outage and automatically switches to the emergency mode. Accordingly the Green LED will turn on until the Battery exhaustion the luminaire and indicator light will turn off.

AC Mode:

Green LED indicator light keep constant on when the system works properly, if there is any error, The green led will blink.

Automatic Self-Checking Test Mode:

- ▶ After being powered, the emergency LED driver will automatically switch to emergency mode for 3s, if system works properly then it will switch to AC mode, Green LED will be constant on.
- ▶ If the green LED blinks, after 2 hours, it will switch to Automatic Self-detecting mode, automatically switch to emergency 30s and back to AC operation mode.
- ▶ The emergency driver will detect itself for 3 seconds monthly. If detection is good, then it will turn to AC mode.

Note: the monthly Self-detection mode will start 10mins after the luminaires turned off.

⚠ WARNING

RISK OF PERSONAL INJURY – READ and follow all WARNINGS and installation instructions. Keep or give to the owner for future reference.

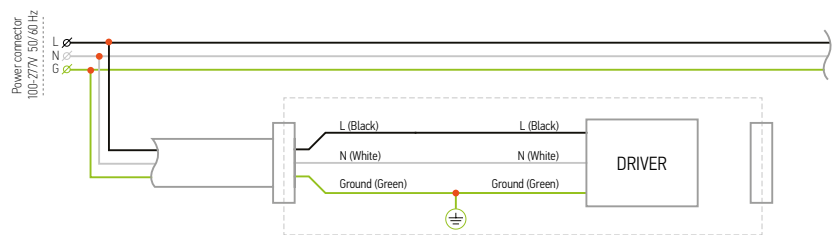
Risk of cuts: Wear gloves to prevent cuts or abrasions when removing from carton, handling, installing, and maintaining this product.

Risk of electric shock: This product must be installed in accordance with the applicable installation code by a person familiar with the construction and operation of the product and the hazards involved.

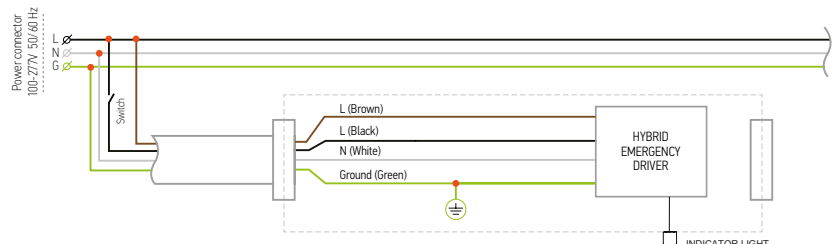
Risk of Fire: Minimum 194°F supply conductors. Consult a qualified electrician to ensure correct branch circuit conductor.

ASD® assumes no responsibility for claims arising out of improper or careless Installation or handling of this product.

ELECTRICAL SCHEMATIC DIAGRAM



ELECTRICAL SCHEMATIC DIAGRAM WITH EMERGENCY





LED Seamless VaporProof Fixture

Premium Series & Emergency Premium Series

INSTALLATION GUIDE

IMPORTANT SAFETY INFORMATION:

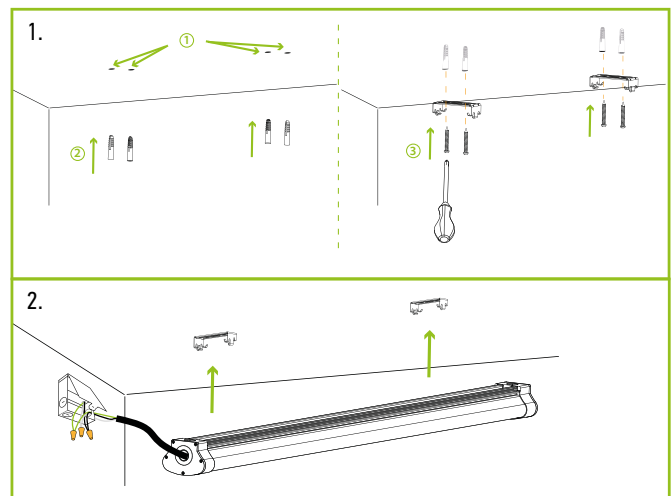
Please read all the instructions below before installation.

- ▶ Make sure that the supply voltage corresponds to the rated product voltage.
- ▶ The product must be installed by a qualified electrician in accordance with the National Electrical Code and corresponding local codes.
- ▶ If the product is damaged, do not use it.

INSTALLATION STEPS

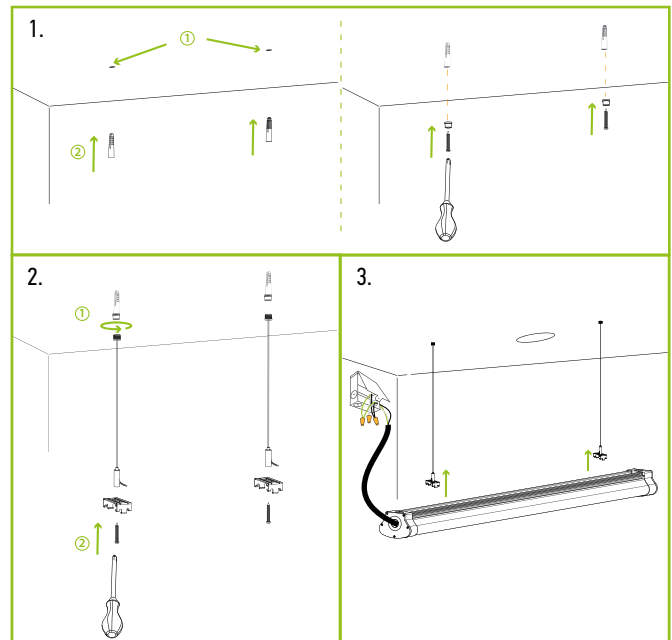
SURFACE MOUNT

1. Affix the mounting brackets to the ceiling/wall
2. Connect black wire to line (hot), white wire to neutral, green to ground. Close the cover and tighten the screws of the end-cap. Affix the fixture to the ceiling/wall by mounting brackets.



SUSPEND MOUNT

1. Affix the hanging sets (does not supply) to the ceiling.
2. Fix the mounting brackets to hanging set with the screw.
3. Connect black wire to line (hot), white wire to neutral, green to ground. Close the cover and tighten the screws of the end-cap. Affix the fixture to the hanging sets.





LED Seamless VaporProof Fixture

Premium Series & Emergency Premium Series

ORDERING INFORMATION

LED SEAMLESS VAPORPROOF FIXTURE ORDERING INFORMATION:

Model	CCT	UPC	GTIN 14	Pcs in one Carton	Carton Size	Carton Weight
ASD-LVP3SM-4N3850PRM	5,000 K	819201026364	10819201026361	8	52.4"x13.0"x8.7"	42.3 lbs
ASD-LVP3SM-4N3850-EM-PRM	5,000 K	819201026371	10819201026378	8	52.4"x13.0"x8.7"	60.0 lbs