



LED Seamless VaporProof Fixture

Premium Series

ASD LED Seamless Premium VaporProof fixture is a modern contemporary lighting fixture widely used in many different commercial and residential environments. It has many features that make it the perfect choice for wet and dusty locations. They can be used in car washes, warehouses, parking garages, stairwells, pool areas, etc.

ASD LED Seamless Premium VaporProof fixture will significantly reduce energy consumption and decrease your energy costs. They are very easy to install and are the perfect replacement for your existing fluorescent fixture. A polycarbonate body makes this fixture impact resistant and able to maintain its luster over time.

ASD LED Seamless Premium VaporProof fixture are maintenance-free and produce bright, high quality light without shadows. Our affordable price makes it an ideal option for any commercial or residential application.

FEATURES AND BENEFITS:

- ▶ Low energy consumption
- ▶ Contemporary design
- ▶ Polycarbonate body
- ▶ 4,000K & 5,000K available
- ▶ Luminous efficiency 125 lm/W
- ▶ 0-10 V dimming
- ▶ Surface mounted luminaire
- ▶ Suitable for Wet Locations
- ▶ L-70 Life > 238,000 hrs
- ▶ DesignLights Consortium (DLC) listed (Classification: Premium)
- ▶ cULus certified
- ▶ 5-year limited warranty

Catalog number	
Notes	
Type	



PRODUCT LEGEND:

Family	Modification	Lens	Size	Dimmable	Watts	CCT	Series
ASD-LVP	2S	M	X	D	XX	XX	PRM
LED VaporProof		Translucent white lens	4 = 4 ft 8 = 8 ft	Dimmable	31 = 31 W 60 = 60 W	40 = 4,000 K 50 = 5,000 K	Premium

LED SEAMLESS VAPORPROOF FIXTURE:

Model	Type	Watts	Dimming	CCT	Lumens	Dimensions (LxWxH)
ASD-LVP2SM-4D3140PRM	4 ft	31 W	YES	4,000 K	3,861 lm	48" x 3 1/2" x 3 1/8"
ASD-LVP2SM-4D3150PRM	4 ft	31 W	YES	5,000 K	3,860 lm	48" x 3 1/2" x 3 1/8"
ASD-LVP2SM-8D6040PRM	8 ft	60 W	YES	4,000 K	7,353 lm	94 1/2" x 3 1/2" x 3 1/8"
ASD-LVP2SM-8D6050PRM	8 ft	60 W	YES	5,000 K	7,570 lm	94 1/2" x 3 1/2" x 3 1/8"

For most up-to-date spec sheets please refer to asd-lighting.com

ASD LIGHTING CORP

E-mail: orders@asd-lighting.com | Web site: www.asd-lighting.com





LED Seamless VaporProof Fixture

Premium Series

PRODUCT SPECIFICATIONS:

Construction & Materials				
Lens	Translucent white lens			
Housing	Polycarbonate white lens			
Finish Color	White			
Weight	ASD-LVP2SM-4D3140PRM	4.6 lb (2.1 kg)	ASD-LVP2SM-8D6040PRM	7 lb (3.2 kg)
	ASD-LVP2SM-4D3150PRM		ASD-LVP2SM-8D6050PRM	
Environmental System				
Work Environment	Suitable for Wet Locations, IP66			
Operating Temperature	-4°F to 104°F (-20°C to 40°C)			
L-70 Life	> 238,000 hrs			
Optical System				
Luminous Flux	ASD-LVP2SM-4D3140PRM	3,861 lm	ASD-LVP2SM-8D6040PRM	7,353 lm
	ASD-LVP2SM-4D3150PRM	3,860 lm	ASD-LVP2SM-8D6050PRM	7,570 lm
Color Temperature	4,000 K, 5,000 K			
CRI	>80			
Electrical System				
Input Voltage	100-277VAC 50/60 Hz			
Max input current	ASD-LVP2SM-4D3140PRM	350 mA	ASD-LVP2SM-8D6040PRM	700 mA
	ASD-LVP2SM-4D3150PRM		ASD-LVP2SM-8D6050PRM	
Inrush current	ASD-LVP2SM-4D3140PRM	35 A	ASD-LVP2SM-8D6040PRM	70 A
	ASD-LVP2SM-4D3150PRM		ASD-LVP2SM-8D6050PRM	
Action time (Inrush current)	ASD-LVP2SM-4D3140PRM	0.7 S	ASD-LVP2SM-8D6040PRM	0.45 S
	ASD-LVP2SM-4D3150PRM		ASD-LVP2SM-8D6050PRM	
AC input range	min 90 V max 285 V			
Off State Power	0 W			
Power Consumption	ASD-LVP2SM-4D3140PRM	31 W	ASD-LVP2SM-8D6040PRM	60 W
	ASD-LVP2SM-4D3150PRM		ASD-LVP2SM-8D6050PRM	
Power Factor	≥ 0.9			
Output voltage	30-42 V			
Max output current	ASD-LVP2SM-4D3140PRM	700 mA	ASD-LVP2SM-8D6040PRM	1.5 A
	ASD-LVP2SM-4D3150PRM		ASD-LVP2SM-8D6050PRM	
LED driver class	B, class 2			
Control				
Dimming Switch	Standard 0-10 V dimming 10% - 100%			
Regular and Voluntary Certifications				
5-year limited warranty				
DesignLights Consortium (DLC) listed (Classification: Premium)				
• Main: Indoor Luminaires				
• General Application: Linear Ambient				
• Primary Use: Direct Linear Ambient Luminaires				
cULus certified	E473804 – luminaire E473855 – driver			

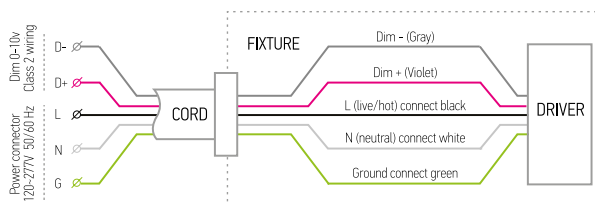
DIMMING COMPATIBLE CONTROLS

MFG	Model Number
Lutron	NFTV
Leviton	IPL710 DLZ
Leviton	IPL710 DL
Cooper	SF10P-W

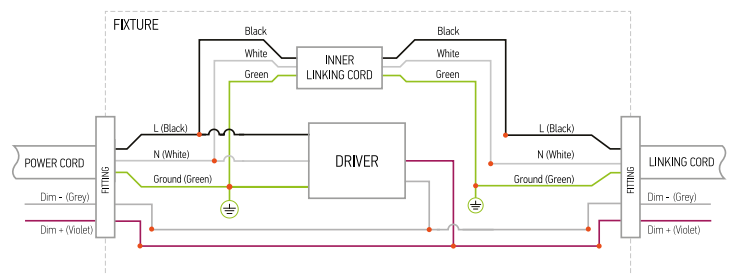
DIMMING COMPATIBLE CONTROLS

MFG	Model Number
Lutron	NFTV
Leviton	IPL710 DLZ
Leviton	IPL710 DL
Cooper	SF10P-W

ELECTRICAL SCHEMATIC DIAGRAM



CONNECTION DIAGRAM



PACKAGE CONTENTS:

Description	Q-ty
LED Seamless VaporProof Fixture	1
Box	1
Installation Instructions	3

For most up-to-date spec sheets please refer to asd-lighting.com

ASD LIGHTING CORP

E-mail: orders@asd-lighting.com | Web site: www.asd-lighting.com





LED Seamless VaporProof Fixture

Premium Series

INSTALLATION GUIDE

IMPORTANT SAFETY INFORMATION:

Please read all the instructions below before installation.

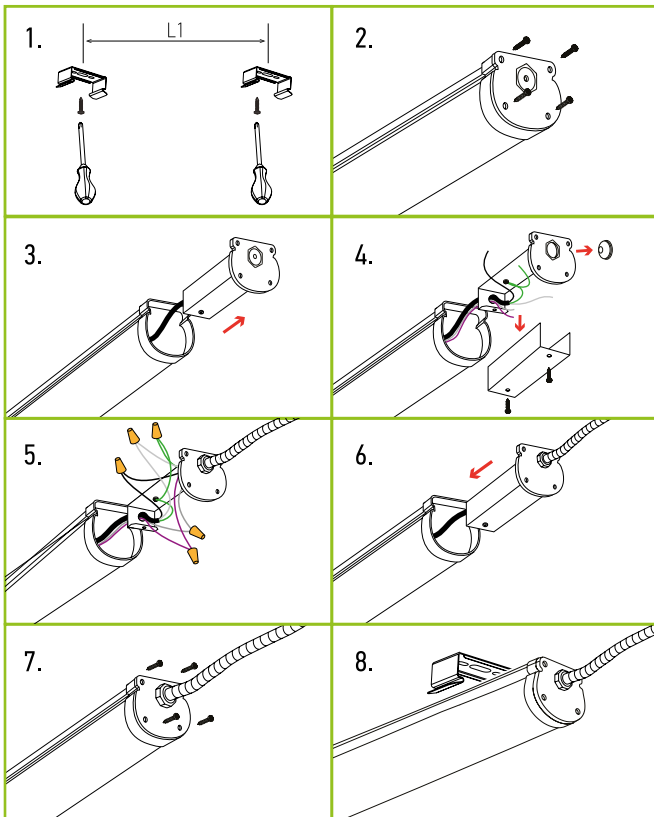
- ▶ Make sure that the supply voltage corresponds to the rated product voltage.
- ▶ The product must be installed by a qualified electrician in accordance with the National Electrical Code and corresponding local codes.
- ▶ If the product is damaged, do not use it.
- ▶ All wiring connections should be capped with UL approved wire connectors.
- ▶ For surface mount there are two stainless steel brackets included.
- ▶ This fixture is intended to be connected to a properly installed and grounded UL listed junction box with suitable strain relief means for power cord. The junction box is not included, should be purchased separately.

INSTALLATION STEPS

1. Affix the mounting brackets to the ceiling/wall. Distance between the brackets (L1) should be 90.2" (2,290 mm) \pm 1.2" (30 mm)
2. Remove four screws of the end-cap.
3. Pull out the end-cap with junction box.
4. Remove the cover of the junction box and remove the gasket.
5. Insert the power cord and 0-10V dimming wires in to the junction box, connect lines black to black, white to white, green to green, grey to grey, violet to violet.

WARNING: if there is no ground supply wire, stop installation and consult a qualified electrician. Once wire connections and made, secure each with a wire nut (CC).

6. Close the cover of the junction box and insert it into the fixture.
7. Tighten the screws of the end-cap.
8. Affix the fixture to the ceiling/wall by mounting brackets.



⚠ WARNING

RISK OF PERSONAL INJURY – READ and follow all WARNINGS and installation instructions.

Keep or give to the owner for future reference.

Risk of cuts: Wear gloves to prevent cuts or abrasions when removing from carton, handling, installing, and maintaining this product.

Risk of electric shock: This product must be installed in accordance with the applicable installation code by a person familiar with the construction and operation of the product and the hazards involved.

Risk of Fire: Minimum 194°F supply conductors. Consult a qualified electrician to ensure correct branch circuit conductor.

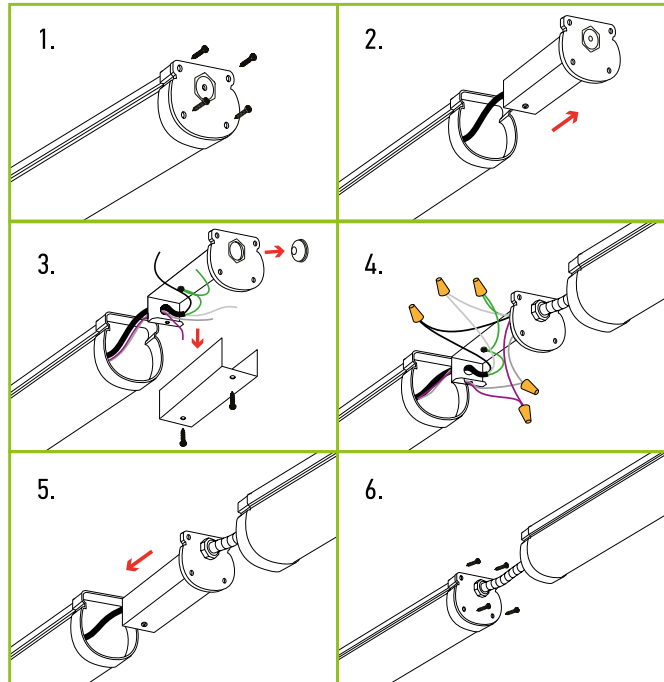
ASD® assumes no responsibility for claims arising out of improper or careless Installation or handling of this product.

CONNECTING MULTIPLE FIXTURES TO ONE SWITCH

1. Remove four screws of the end-cap.
2. Pull out the end-cap with junction box.
3. Remove the cover of the junction box and remove the gasket.
4. Insert the power cord and 0-10V dimming wires in to the junction box of the next linked luminaire, connect lines black to black, white to white, green to green, grey to grey, violet to violet.

WARNING: if there is no ground supply wire, stop installation and consult a qualified electrician. Once wire connections and made, secure each with a wire nut (CC).

5. Close the cover of the junction box and insert it into the fixture.
6. Tighten the screws of the end-cap.



LINKING LIMITS:

Model	Linkable Quantities Depending on Voltage		
	110V	200V	277V
4 ft	14 pcs	28 pcs	32 pcs
8 ft	7 pcs	14 pcs	16 pcs

For most up-to-date spec sheets please refer to asd-lighting.com

ASD LIGHTING CORP

E-mail: orders@asd-lighting.com | Web site: www.asd-lighting.com

