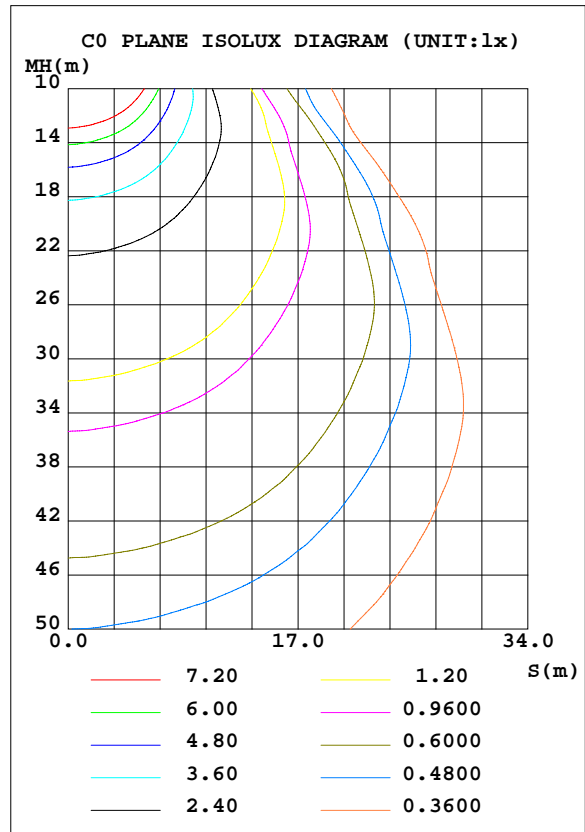
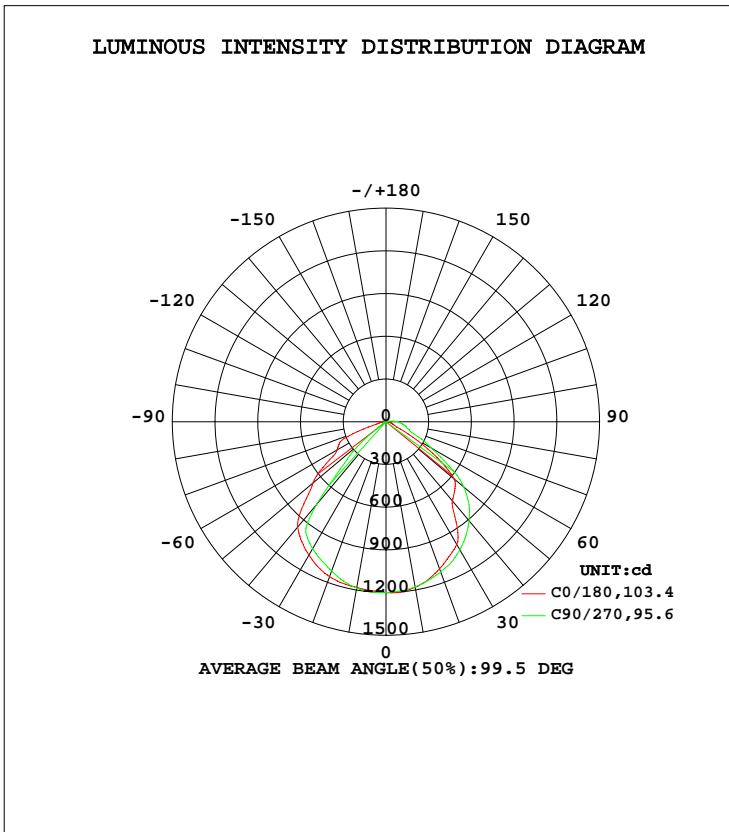


LUMINAIRE PHOTOMETRIC TEST REPORT

Test:U:120.1V I:0.2507A P:29.76W PF:0.9887 Lamp Flux:2741.75x1 lm		
NAME: ASD-LSR-3050-AP	TYPE:N/A	WEIGHT:N/A
SPEC.:N/A	DIM.: N/A	SERIAL No.:N/A
MFR.: ASD Lighting Corp	SUR.:N/A	Shielding Angle:N/A

DATA OF LAMP		PHOTOMETRIC DATA				Eff: 92.13 lm/W
MODEL	ASD-LSR-3050-AP	I _{max} (cd)	1205	S/MH(C0/180)		1.23
NOMINAL POWER(W)	30	LOR(%)	100.0	S/MH(C90/270)		1.28
RATED VOLTAGE(V)	120	TOTAL FLUX(lm)	2741.8	η UP, DN(C0-180)		0.1,42.8
NOMINAL FLUX(lm)	2741.75	CIE CLASS	DIRECT	η UP, DN(C180-360)		0.8,56.3
LAMPS INSIDE	1	η up(%)	0.9	CIBSE SHR NOM		1.25
TEST VOLTAGE(V)	120	η down(%)	99.1	CIBSE SHR MAX		1.35



C Range: 0 - 360DEG
 C Interval: 22.5DEG
 Test Speed: HIGH
 Temperature:25.2DEG
 Operators:ben
 Test Date:2017-08-07

γ Range: 0 - 180DEG
 γ Interval: 1.0DEG
 Test System:EVERFINE GO-R5000_V2 SYSTEM V2.0.351
 Humidity:45%
 Test Distance:2.447m [K=1.0000]
 Remarks:

ZONAL FLUX DIAGRAM

ZONAL FLUX DIAGRAM:

γ	C0	C45	C90	C135	C180	C225	C270	C315	γ	Φ zone	Φ total	%lum,lamp
10	1182	1182	1187	1183	1181	1180	1177	1179	0- 10	113.7	113.7	4.15,4.15
20	1158	1139	1116	1099	1099	1100	1122	1126	10- 20	326.1	439.8	16,16
30	1082	1066	1029	999.1	993.8	1000	1038	1051	20- 30	498.5	938.3	34.2,34.2
40	965.6	804.5	758.9	705.6	724.7	877.2	908.3	949.8	30- 40	592.1	1530	55.8,55.8
50	671.4	561.2	225.8	314.3	624.7	626.9	713.1	772.2	40- 50	546.5	2077	75.8,75.8
60	397.4	121.3	25.59	34.91	219.5	360.7	366.4	417.3	50- 60	343.5	2420	88.3,88.3
70	248.6	24.90	6.018	12.90	51.76	178.8	176.1	256.4	60- 70	176.0	2596	94.7,94.7
80	46.74	7.714	0.1549	0.1490	28.50	77.50	127.3	109.4	70- 80	79.07	2676	97.6,97.6
90	18.76	0.2725	0.2065	0.1872	5.770	39.31	79.96	62.59	80- 90	40.70	2716	99.1,99.1
100	6.178	0.2286	0.2965	0.2843	0.1229	13.53	28.53	21.23	90-100	18.12	2734	99.7,99.7
110	0.3016	0.3135	0.3945	0.3668	0.2033	0.2360	1.503	3.454	100-110	4.372	2739	99.9,99.9
120	0.3403	0.3930	0.4762	0.4492	0.3420	0.2956	0.2100	0.2741	110-120	0.3507	2739	99.9,99.9
130	0.5138	0.5659	0.6423	0.6270	0.5230	0.4446	0.3580	0.3995	120-130	0.3732	2739	99.9,99.9
140	0.8918	0.9295	0.9581	0.9767	0.7406	0.6610	0.5797	0.6172	130-140	0.4904	2740	99.9,99.9
150	1.489	1.519	1.539	1.529	0.9493	0.9369	0.8796	0.8449	140-150	0.6239	2741	100,100
160	1.929	1.950	1.949	1.921	1.147	1.155	1.152	1.118	150-160	0.6393	2741	100,100
170	1.825	1.830	1.807	1.773	1.214	1.211	1.220	1.199	160-170	0.4401	2742	100,100
180	1.541	1.539	1.523	1.501	1.553	1.555	1.541	1.523	170-180	0.1432	2742	100,100
DEG	LUMINOUS INTENSITY:cd Less than 25% Percent = 5.1 %									UNIT:lm		

Conical surface Flux(90deg): 1815.4 lm

%lum = 66.2%
 %lamp = 66.2%

Conical surface Flux(120deg): 2420.5 lm

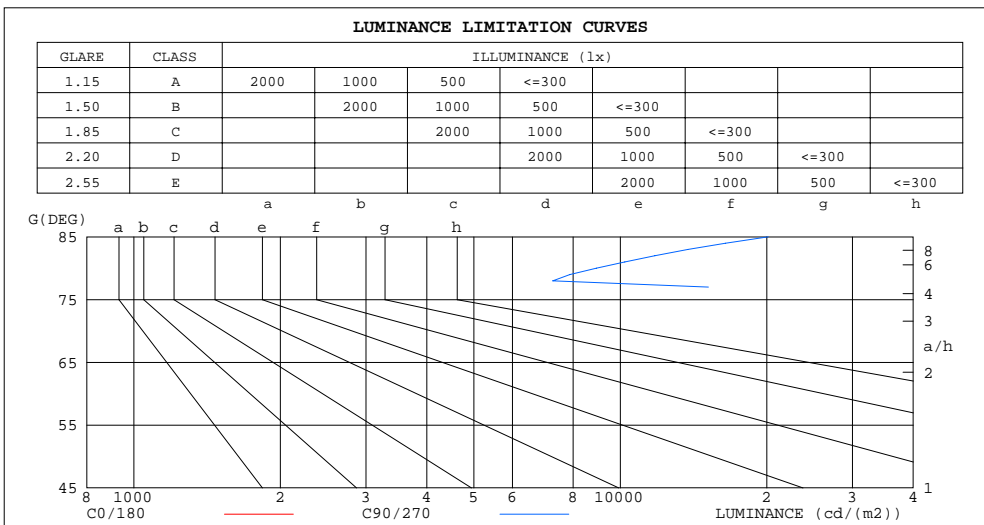
%lum = 88.3%
 %lamp = 88.3%

C Range: 0 - 360DEG
 C Interval: 22.5DEG
 Test Speed: HIGH
 Temperature:25.2DEG
 Operators:ben
 Test Date:2017-08-07

γ Range: 0 - 180DEG
 γ Interval: 1.0DEG
 Test System:EVERFINE GO-R5000_V2 SYSTEM V2.0.351
 Humidity:45%
 Test Distance:2.447m [K=1.0000]
 Remarks:

LUMINANCE LIMITATION CURVES

Test:U:120.1V I:0.2507A P:29.76W PF:0.9887 Lamp Flux:2741.75x1 lm		
NAME: ASD-LSR-3050-AP	TYPE:N/A	WEIGHT:N/A
SPEC.:N/A	DIM.: N/A	SERIAL No.:N/A
MFR.: ASD Lighting Corp	SUR.:N/A	Shielding Angle:N/A



LUMINANCE cd/(m2)		
G (DEG)	C0/180	C90/270
85	3655307	20143
80	2694584	8924
75	2982893	72085
70	7276523	176061
65	8568584	343014
60	7957934	512028
55	8950198	906271
50	10457527	3514579
45	11547592	5837886

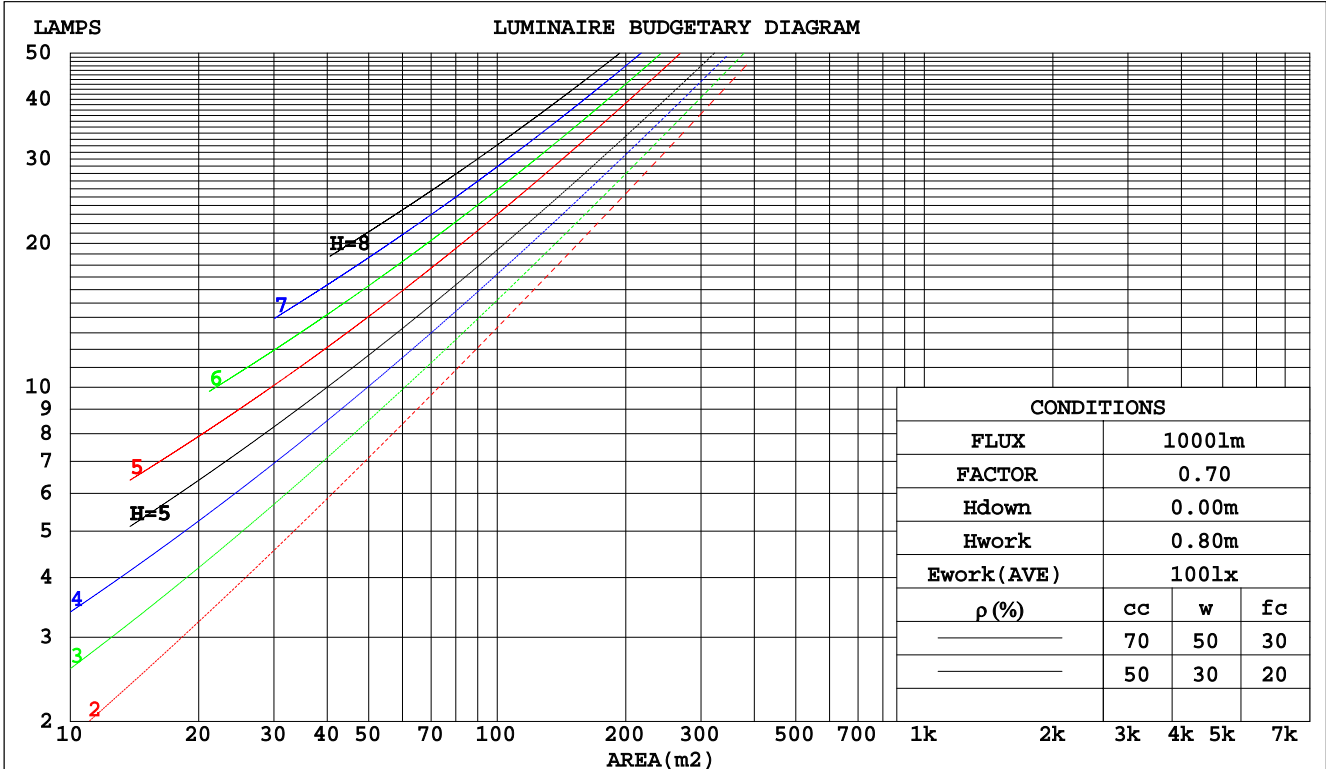
C Range: 0 - 360DEG
 C Interval: 22.5DEG
 Test Speed: HIGH
 Temperature:25.2DEG
 Operators:ben
 Test Date:2017-08-07

γ Range: 0 - 180DEG
 γ Interval: 1.0DEG
 Test System:EVERFINE GO-R5000_V2 SYSTEM V2.0.351
 Humidity:45%
 Test Distance:2.447m [K=1.0000]
 Remarks:

CU AND LUMINAIRE BUDGETARY ESTIMATE DIAGRAM

Test:U:120.1V I:0.2507A P:29.76W PF:0.9887 Lamp Flux:2741.75x1 lm		
NAME: ASD-LSR-3050-AP	TYPE:N/A	WEIGHT:N/A
SPEC.:N/A	DIM.: N/A	SERIAL No.:N/A
MFR.: ASD Lighting Corp	SUR.:N/A	Shielding Angle:N/A

pcc	80%			70%			50%			30%			10%			0
	50%	30%	10%	50%	30%	10%	50%	30%	10%	50%	30%	10%	50%	30%	10%	0
pw																0
pfc	20%			20%			20%			20%			20%			0
RCR	RCR:Room Cavity Ratio Coefficients of Utilization(CU)															
0.0	1.19	1.19	1.19	1.16	1.16	1.16	1.11	1.11	1.11	1.06	1.06	1.06	1.01	1.01	1.01	.99
1.0	1.06	1.02	.99	1.04	1.00	.97	.99	.97	.94	.95	.93	.91	.92	.90	.88	.86
2.0	.94	.88	.84	.92	.87	.82	.89	.84	.80	.86	.82	.79	.83	.79	.77	.75
3.0	.84	.77	.71	.83	.76	.71	.80	.74	.69	.77	.72	.68	.74	.70	.67	.65
4.0	.76	.68	.62	.74	.67	.61	.72	.66	.61	.70	.64	.60	.67	.63	.59	.57
5.0	.68	.60	.54	.67	.60	.54	.65	.58	.53	.63	.57	.53	.61	.56	.52	.50
6.0	.62	.54	.48	.61	.53	.48	.59	.52	.47	.58	.51	.47	.56	.51	.46	.44
7.0	.57	.49	.43	.56	.48	.43	.54	.47	.42	.53	.47	.42	.51	.46	.42	.40
8.0	.52	.44	.39	.51	.44	.38	.50	.43	.38	.49	.42	.38	.47	.42	.38	.36
9.0	.48	.40	.35	.47	.40	.35	.46	.39	.35	.45	.39	.34	.44	.38	.34	.32
10.0	.44	.37	.32	.44	.37	.32	.43	.36	.32	.42	.36	.31	.41	.35	.31	.29



C Range: 0 - 360DEG
 C Interval: 22.5DEG
 Test Speed: HIGH
 Temperature:25.2DEG
 Operators:ben
 Test Date:2017-08-07

γ Range: 0 - 180DEG
 γ Interval: 1.0DEG
 Test System:EVERFINE GO-R5000_V2 SYSTEM V2.0.351
 Humidity:45%
 Test Distance:2.447m [K=1.0000]
 Remarks:

WEC AND CCEC

Test:U:120.1V I:0.2507A P:29.76W PF:0.9887 Lamp Flux:2741.75x1 lm		
NAME: ASD-LSR-3050-AP	TYPE:N/A	WEIGHT:N/A
SPEC.:N/A	DIM.: N/A	SERIAL No.:N/A
MFR.: ASD Lighting Corp	SUR.:N/A	Shielding Angle:N/A

ρcc	80%			70%			50%			30%			10%			0
ρw	50%	30%	10%	50%	30%	10%	50%	30%	10%	50%	30%	10%	50%	30%	10%	0
ρfc	20%			20%			20%			20%			20%			0
RCR	RCR:Room Cavity Ratio						Wall Exitance Coefficients(WEC)									
0.0																
1.0	.264	.150	.048	.257	.147	.047	.244	.140	.045	.231	.133	.043	.220	.127	.041	
2.0	.251	.138	.042	.245	.135	.042	.233	.130	.040	.222	.125	.039	.212	.120	.038	
3.0	.236	.126	.038	.231	.124	.037	.220	.119	.036	.211	.116	.035	.202	.112	.035	
4.0	.222	.115	.034	.217	.113	.034	.207	.110	.033	.199	.107	.032	.191	.104	.032	
5.0	.208	.106	.031	.203	.104	.030	.195	.102	.030	.187	.099	.029	.180	.096	.029	
6.0	.195	.098	.028	.191	.096	.028	.184	.094	.027	.177	.092	.027	.170	.090	.027	
7.0	.183	.091	.026	.180	.090	.026	.173	.088	.025	.167	.086	.025	.161	.084	.025	
8.0	.172	.084	.024	.169	.083	.024	.164	.082	.023	.158	.080	.023	.153	.078	.023	
9.0	.163	.079	.022	.160	.078	.022	.155	.077	.022	.150	.075	.021	.145	.074	.021	
10.0	.154	.074	.021	.152	.073	.020	.147	.072	.020	.142	.071	.020	.138	.069	.020	

ρcc	80%			70%			50%			30%			10%			0
ρw	50%	30%	10%	50%	30%	10%	50%	30%	10%	50%	30%	10%	50%	30%	10%	0
ρfc	20%			20%			20%			20%			20%			0
RCR	RCR:Room Cavity Ratio						Ceiling Cavity Exitance Coefficients(CCEC)									
0.0	.198	.198	.198	.169	.169	.169	.115	.115	.115	.066	.066	.066	.021	.021	.021	
1.0	.184	.164	.145	.158	.140	.125	.108	.097	.086	.062	.056	.050	.020	.018	.016	
2.0	.174	.139	.110	.149	.120	.095	.102	.083	.066	.059	.048	.039	.019	.016	.013	
3.0	.165	.121	.086	.142	.105	.075	.097	.073	.052	.056	.042	.031	.018	.014	.010	
4.0	.157	.108	.070	.135	.093	.061	.093	.065	.043	.054	.038	.025	.017	.012	.008	
5.0	.150	.097	.058	.129	.084	.050	.089	.059	.036	.051	.034	.021	.017	.011	.007	
6.0	.143	.088	.049	.123	.077	.043	.085	.054	.030	.049	.032	.018	.016	.010	.006	
7.0	.137	.081	.043	.118	.071	.037	.081	.050	.026	.047	.029	.016	.015	.010	.005	
8.0	.131	.076	.038	.113	.066	.033	.078	.046	.023	.045	.027	.014	.015	.009	.005	
9.0	.125	.071	.034	.108	.061	.030	.075	.043	.021	.044	.025	.013	.014	.008	.004	
10.0	.120	.066	.031	.103	.058	.027	.072	.041	.019	.042	.024	.011	.014	.008	.004	

C Range: 0 - 360DEG
 C Interval: 22.5DEG
 Test Speed: HIGH
 Temperature:25.2DEG
 Operators:ben
 Test Date:2017-08-07

γ Range: 0 - 180DEG
 γ Interval: 1.0DEG
 Test System:EVERFINE GO-R5000_V2 SYSTEM V2.0.351
 Humidity:45%
 Test Distance:2.447m [K=1.0000]
 Remarks:

UGR(Unified Glare Rating) Table

Test:U:120.1V I:0.2507A P:29.76W PF:0.9887 Lamp Flux:2741.75x1 lm		
NAME: ASD-LSR-3050-AP	TYPE:N/A	WEIGHT:N/A
SPEC.:N/A	DIM.: N/A	SERIAL No.:N/A
MFR.: ASD Lighting Corp	SUR.:N/A	Shielding Angle:N/A

ceiling/cavity	0.7	0.7	0.5	0.5	0.3	0.7	0.7	0.5	0.5	0.3
walls	0.5	0.3	0.5	0.3	0.3	0.5	0.3	0.5	0.3	0.3
working plane	0.2	0.2	0.2	0.2	0.2	0.2	0.2	0.2	0.2	0.2
Room dimensions	Viewed crosswise					Viewed endwise				
x = 2H y = 2H	44.2	45.6	44.5	45.8	46.0	39.9	41.3	40.2	41.5	41.7
3H	45.1	46.3	45.4	46.6	46.8	39.7	41.0	40.0	41.2	41.5
4H	45.1	46.3	45.5	46.6	46.8	39.6	40.8	39.9	41.1	41.3
6H	45.1	46.2	45.5	46.5	46.8	39.5	40.6	39.8	40.9	41.2
8H	45.1	46.2	45.5	46.5	46.8	39.5	40.5	39.8	40.8	41.1
12H	45.2	46.2	45.5	46.5	46.8	39.4	40.4	39.8	40.7	41.0
4H 2H	44.0	45.2	44.3	45.4	45.7	40.1	41.3	40.4	41.5	41.8
3H	44.9	45.9	45.2	46.2	46.5	39.9	40.9	40.3	41.2	41.6
4H	45.0	45.9	45.3	46.2	46.6	39.8	40.8	40.2	41.1	41.4
6H	45.0	45.8	45.4	46.2	46.6	39.7	40.5	40.1	40.9	41.3
8H	45.0	45.8	45.5	46.2	46.6	39.7	40.4	40.1	40.8	41.2
12H	45.1	45.8	45.5	46.2	46.6	39.6	40.3	40.1	40.7	41.1
8H 4H	44.8	45.6	45.2	46.0	46.4	39.7	40.5	40.2	40.9	41.3
6H	44.9	45.5	45.3	45.9	46.4	39.6	40.3	40.1	40.7	41.1
8H	45.0	45.5	45.4	45.9	46.4	39.6	40.2	40.1	40.6	41.1
12H	45.1	45.5	45.5	46.0	46.5	39.6	40.0	40.0	40.5	41.0
12H 4H	44.8	45.5	45.2	45.9	46.3	39.7	40.4	40.1	40.8	41.2
6H	44.8	45.4	45.3	45.8	46.3	39.6	40.2	40.1	40.6	41.1
8H	44.9	45.4	45.4	45.9	46.3	39.6	40.1	40.1	40.5	41.0
Variations with the observer position at spacings:										
S = 1.0H	+ 0.7 / - 0.7					+ 2.4 / - 9.2				
1.5H	+ 0.9 / - 1.1					+ 1.7 / - 5.3				
2.0H	+ 1.8 / - 2.7					+ 4.8 / - 9.6				

CIE Pub.117 Corrected 2742 lm Total Lamp Luminous Flux.(8log(F/F0) = 3.5)

C Range: 0 - 360DEG
 C Interval: 22.5DEG
 Test Speed: HIGH
 Temperature:25.2DEG
 Operators:ben
 Test Date:2017-08-07

γ Range: 0 - 180DEG
 γ Interval: 1.0DEG
 Test System:EVERFINE GO-R5000_V2 SYSTEM V2.0.351
 Humidity:45%
 Test Distance:2.447m [K=1.0000]
 Remarks:

UTILIZATION FACTORS TABLE

Test:U:120.1V I:0.2507A P:29.76W PF:0.9887 Lamp Flux:2741.75x1 lm		
NAME: ASD-LSR-3050-AP	TYPE:N/A	WEIGHT:N/A
SPEC.:N/A	DIM.: N/A	SERIAL No.:N/A
MFR.: ASD Lighting Corp	SUR.:N/A	Shielding Angle:N/A

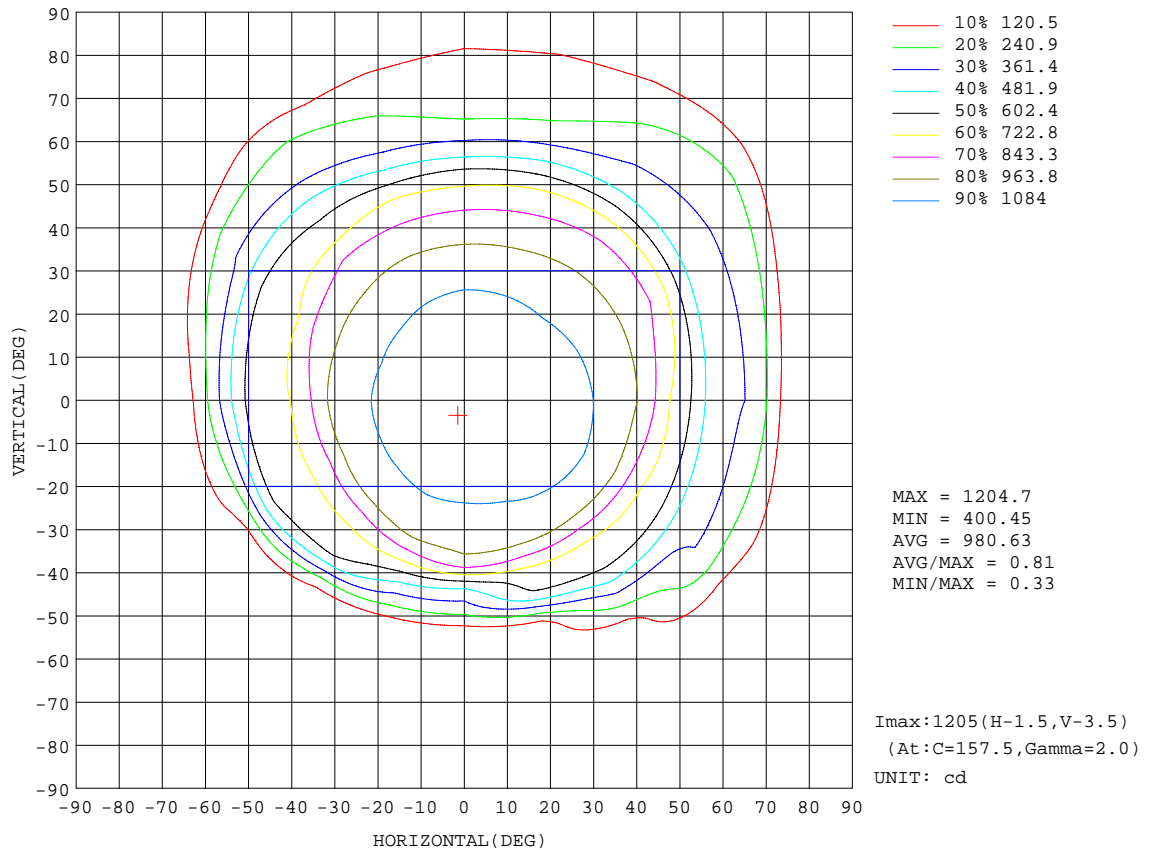
REFLECTANCE										
Ceiling	0.8	0.8	0.8	0.7	0.7	0.7	0.5	0.5	0.5	0
Walls	0.7	0.5	0.3	0.7	0.5	0.3	0.7	0.5	0.3	0
Working plane	0.2	0.2	0.2	0.2	0.2	0.2	0.2	0.2	0.2	0
ROOM INDEX	UTILIZATION FACTORS(PERCENT) $k(RI) \times RCR = 5$									
k = 0.60	64	53	47	63	53	47	62	52	47	41
0.80	74	64	57	73	63	57	71	62	57	50
1.00	82	72	66	81	72	66	79	73	65	59
1.25	89	80	74	87	79	73	85	78	72	66
1.50	93	85	79	92	84	78	89	82	77	71
2.00	99	92	86	97	91	86	94	89	84	77
2.50	102	96	90	100	94	90	97	92	88	80
3.00	105	99	94	103	98	93	99	95	91	83
4.00	108	103	99	106	102	98	102	98	95	87
5.00	110	106	102	108	104	101	103	100	98	89
ROOM INDEX	UF(total)									Direct
According to DIN EN 13032-2 2004			Suspended				SHRNOM = 1.25			

C Range: 0 - 360DEG
 C Interval: 22.5DEG
 Test Speed: HIGH
 Temperature:25.2DEG
 Operators:ben
 Test Date:2017-08-07

γ Range: 0 - 180DEG
 γ Interval: 1.0DEG
 Test System:EVERFINE GO-R5000_V2 SYSTEM V2.0.351
 Humidity:45%
 Test Distance:2.447m [K=1.0000]
 Remarks:

ISOCANDELA DIAGRAM

Test:U:120.1V I:0.2507A P:29.76W PF:0.9887 Lamp Flux:2741.75x1 lm		
NAME: ASD-LSR-3050-AP	TYPE:N/A	WEIGHT:N/A
SPEC.:N/A	DIM.: N/A	SERIAL No.:N/A
MFR.: ASD Lighting Corp	SUR.:N/A	Shielding Angle:N/A

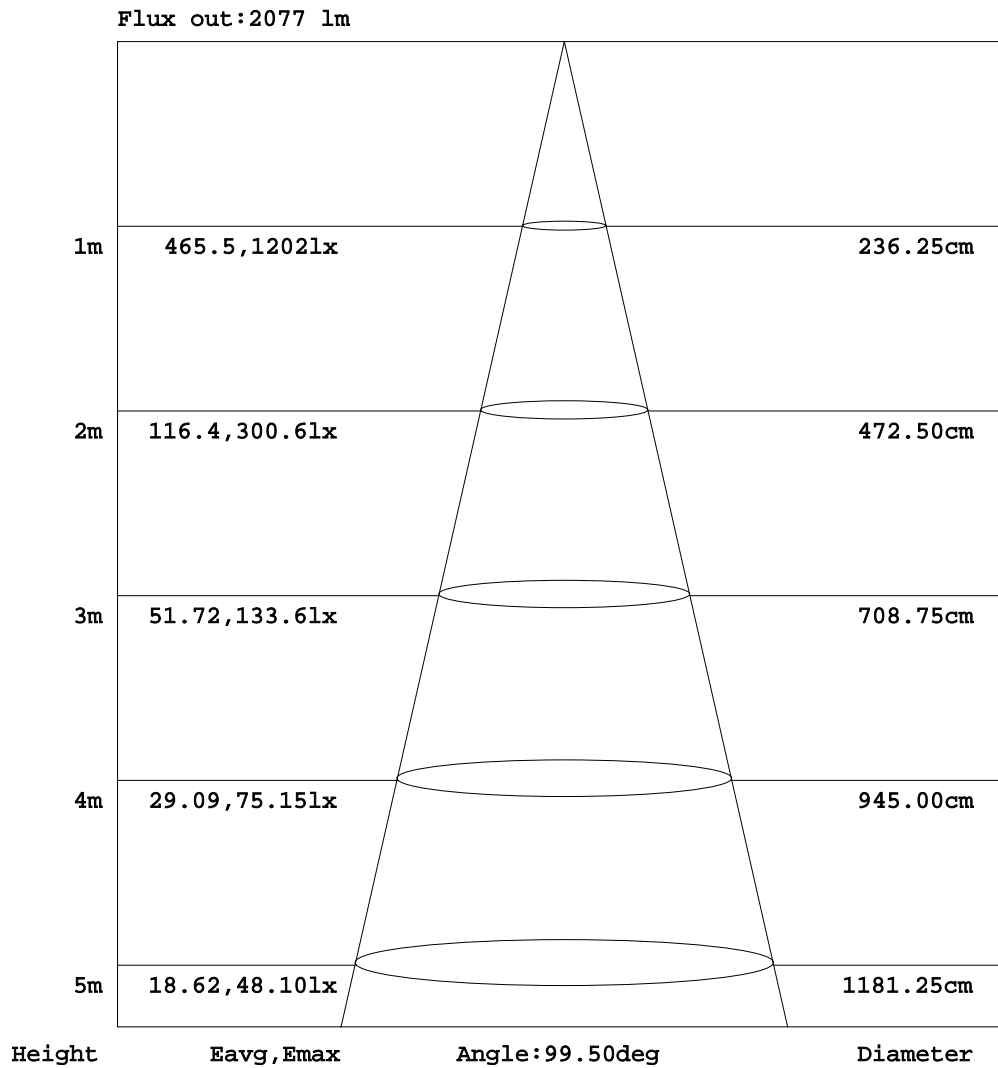


C Range: 0 - 360DEG
 C Interval: 22.5DEG
 Test Speed: HIGH
 Temperature:25.2DEG
 Operators:ben
 Test Date:2017-08-07

γ Range: 0 - 180DEG
 γ Interval: 1.0DEG
 Test System:EVERFINE GO-R5000_V2 SYSTEM V2.0.351
 Humidity:45%
 Test Distance:2.447m [K=1.0000]
 Remarks:

AAI Figure

Test:U:120.1V I:0.2507A P:29.76W PF:0.9887 Lamp Flux:2741.75x1 lm		
NAME: ASD-LSR-3050-AP	TYPE:N/A	WEIGHT:N/A
SPEC.:N/A	DIM.: N/A	SERIAL No.:N/A
MFR.: ASD Lighting Corp	SUR.:N/A	Shielding Angle:N/A



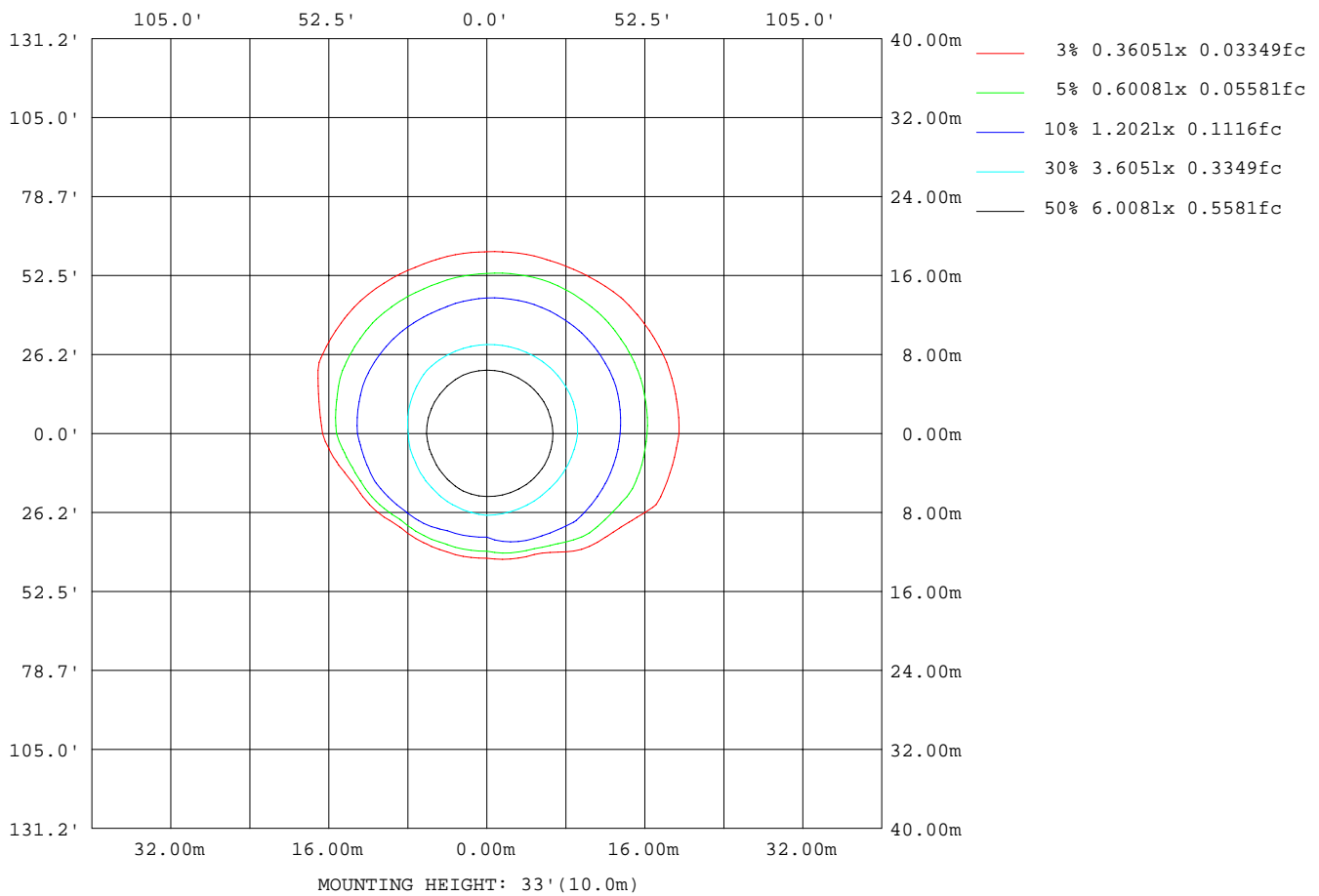
Note:The Curves indicate the illuminated area and the average illumination when the luminaire is at different distance.

C Range: 0 - 360DEG
 C Interval: 22.5DEG
 Test Speed: HIGH
 Temperature:25.2DEG
 Operators:ben
 Test Date:2017-08-07

γ Range: 0 - 180DEG
 γ Interval: 1.0DEG
 Test System:EVERFINE GO-R5000_V2 SYSTEM V2.0.351
 Humidity:45%
 Test Distance:2.447m [K=1.0000]
 Remarks:

ISOLUX DIAGRAM

Test:U:120.1V I:0.2507A P:29.76W PF:0.9887 Lamp Flux:2741.75x1 lm		
NAME: ASD-LSR-3050-AP	TYPE:N/A	WEIGHT:N/A
SPEC.:N/A	DIM.: N/A	SERIAL No.:N/A
MFR.: ASD Lighting Corp	SUR.:N/A	Shielding Angle:N/A



C Range: 0 - 360DEG
 C Interval: 22.5DEG
 Test Speed: HIGH
 Temperature:25.2DEG
 Operators:ben
 Test Date:2017-08-07

γ Range: 0 - 180DEG
 γ Interval: 1.0DEG
 Test System:EVERFINE GO-R5000_V2 SYSTEM V2.0.351
 Humidity:45%
 Test Distance:2.447m [K=1.0000]
 Remarks:

LED Avg.L Report

Test:U:120.1V I:0.2507A P:29.76W PF:0.9887 Lamp Flux:2741.75x1 lm		
NAME: ASD-LSR-3050-AP	TYPE:N/A	WEIGHT:N/A
SPEC.:N/A	DIM.: N/A	SERIAL No.:N/A
MFR.: ASD Lighting Corp	SUR.:N/A	Shielding Angle:N/A

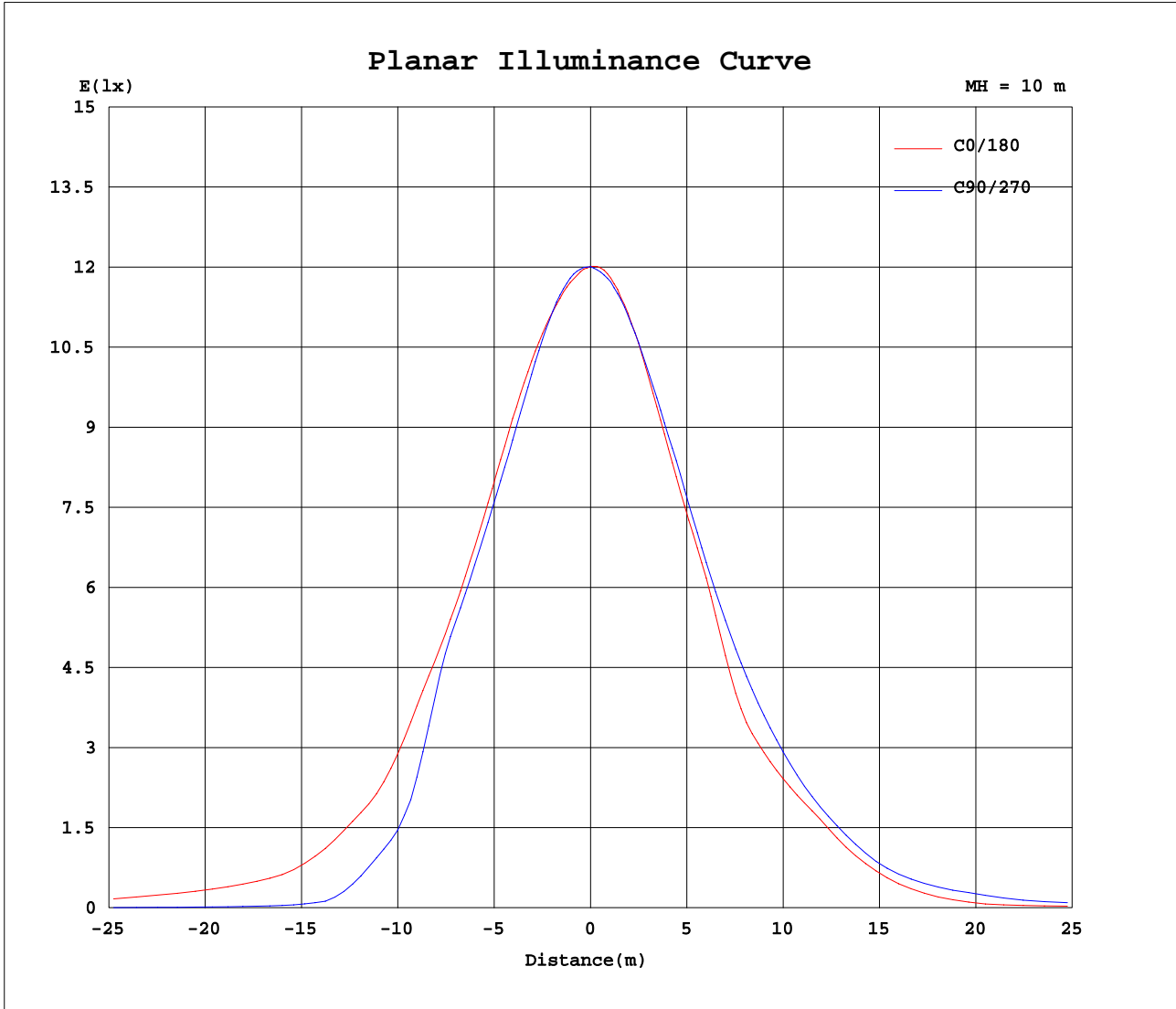
AvgL	cd/m2
L_0~180(65)av	5154749
L_0~180(75)av	2242183
L_0~180(85)av	2712361
L_90~270(65)av	3075424
L_90~270(75)av	2897453
L_90~270(85)av	6029093
L_45(65)av	4127906
L_45(75)av	2711218
L_45(85)av	4121893

Standard: GB/T 29293-2012

C Range: 0 - 360DEG
 C Interval: 22.5DEG
 Test Speed: HIGH
 Temperature:25.2DEG
 Operators:ben
 Test Date:2017-08-07

γ Range: 0 - 180DEG
 γ Interval: 1.0DEG
 Test System:EVERFINE GO-R5000_V2 SYSTEM V2.0.351
 Humidity:45%
 Test Distance:2.447m [K=1.0000]
 Remarks:

Planar Illuminance Curve



C Range: 0 - 360DEG
 C Interval: 22.5DEG
 Test Speed: HIGH
 Temperature: 25.2DEG
 Operators: ben
 Test Date: 2017-08-07

γ Range: 0 - 180DEG
 γ Interval: 1.0DEG
 Test System: EVERFINE GO-R5000_V2 SYSTEM V2.0.351
 Humidity: 45%
 Test Distance: 2.447m [K=1.0000]
 Remarks:

LUMINOUS DISTRIBUTION INTENSITY DATA

Test:U:120.1V I:0.2507A P:29.76W PF:0.9887 Lamp Flux:2741.75x1 lm		
NAME: ASD-LSR-3050-AP	TYPE:N/A	WEIGHT:N/A
SPEC.:N/A	DIM.: N/A	SERIAL No.:N/A
MFR.: ASD Lighting Corp	SUR.:N/A	Shielding Angle:N/A

Table--1

UNIT: cd

C(DEG) γ (DEG)	0	22.5	45	67.5	90	112.5	135	157.5	180	202.5	225	247.5	270	292.5	315	337.5			
0	1200	1200	1200	1200	1200	1200	1200	1200	1200	1200	1200	1200	1200	1200	1200	1200			
5	1190	1192	1194	1198	1200	1203	1202	1202	1200	1199	1196	1194	1192	1192	1192	1193			
10	1182	1181	1182	1185	1187	1186	1183	1180	1181	1182	1180	1178	1177	1180	1179	1182			
15	1174	1175	1161	1159	1158	1154	1143	1147	1148	1142	1140	1147	1152	1156	1158	1164			
20	1158	1165	1139	1120	1116	1113	1099	1099	1099	1092	1100	1112	1122	1124	1126	1139			
25	1127	1131	1111	1086	1074	1072	1058	1047	1046	1040	1052	1075	1090	1091	1093	1108			
30	1082	1086	1066	1043	1029	1026	999	980	994	988	1000	1029	1038	1043	1051	1073			
35	1030	1031	1002	979	973	918	827	807	859	928	947	970	979	986	1006	1024			
40	966	896	804	767	759	700	706	714	725	791	877	896	908	929	950	964			
45	816	719	678	640	413	450	631	667	683	686	752	803	826	849	880	891			
50	671	625	561	370	226	231	314	554	625	643	627	682	713	751	772	782			
55	513	440	339	61.9	51.9	53.6	62.4	187	439	509	525	502	541	575	587	575			
60	397	367	121	34.5	25.6	26.2	34.9	58.2	219	358	361	350	366	400	417	414			
65	362	230	40.9	21.4	14.5	14.0	20.8	39.5	74.0	222	297	282	245	272	339	364			
70	249	59.2	24.9	12.4	6.02	6.02	12.9	27.7	51.8	88.1	179	187	176	180	256	316			
75	77.1	34.6	16.4	5.59	1.86	1.99	5.26	19.1	38.9	62.7	98.9	132	148	146	160	181			
80	46.7	23.7	7.71	0.22	0.15	0.13	0.15	8.25	28.5	49.1	77.5	107	127	125	109	84.2			
85	31.8	13.0	1.67	0.22	0.18	0.16	0.15	0.23	15.5	36.0	56.5	85.2	105	103	85.4	59.8			
90	18.8	6.99	0.27	0.23	0.21	0.19	0.19	0.17	5.77	21.5	39.3	62.5	80.0	78.8	62.6	38.6			
95	12.1	1.59	0.18	0.26	0.25	0.24	0.23	0.22	0.23	11.5	23.4	39.2	53.3	53.3	40.3	22.1			
100	6.18	0.30	0.23	0.30	0.30	0.29	0.28	0.27	0.12	3.57	13.5	18.9	28.5	29.1	21.2	15.3			
105	0.42	0.23	0.28	0.35	0.35	0.35	0.33	0.31	0.16	0.21	4.95	9.62	11.7	12.9	11.6	8.09			
110	0.30	0.27	0.31	0.38	0.39	0.39	0.37	0.35	0.20	0.18	0.24	1.63	1.50	1.87	3.45	0.41			
115	0.29	0.31	0.35	0.41	0.43	0.43	0.41	0.38	0.26	0.23	0.24	0.22	0.18	0.18	0.25	0.28			
120	0.34	0.35	0.39	0.45	0.48	0.47	0.45	0.43	0.34	0.30	0.30	0.27	0.21	0.21	0.27	0.29			
125	0.41	0.42	0.46	0.51	0.54	0.52	0.52	0.50	0.43	0.38	0.36	0.34	0.28	0.27	0.33	0.34			
130	0.51	0.53	0.57	0.61	0.64	0.63	0.63	0.62	0.52	0.48	0.44	0.42	0.36	0.35	0.40	0.40			
135	0.67	0.69	0.72	0.76	0.77	0.77	0.77	0.77	0.63	0.59	0.56	0.52	0.46	0.45	0.49	0.49			
140	0.89	0.91	0.93	0.95	0.96	0.97	0.98	0.97	0.74	0.71	0.66	0.62	0.58	0.58	0.62	0.62			
145	1.19	1.21	1.22	1.24	1.25	1.26	1.26	1.24	0.85	0.84	0.81	0.77	0.73	0.71	0.72	0.76			
150	1.49	1.50	1.52	1.53	1.54	1.54	1.53	1.51	0.95	0.94	0.94	0.91	0.88	0.86	0.84	0.83			
155	1.74	1.75	1.76	1.77	1.77	1.76	1.75	1.73	1.07	1.07	1.07	1.07	1.05	1.03	1.01	0.99			
160	1.93	1.94	1.95	1.96	1.95	1.94	1.92	1.90	1.15	1.15	1.15	1.16	1.15	1.13	1.12	1.10			
165	1.95	1.96	1.96	1.96	1.95	1.93	1.92	1.90	1.19	1.19	1.20	1.20	1.21	1.21	1.19	1.17			
170	1.82	1.83	1.83	1.82	1.81	1.79	1.77	1.76	1.21	1.22	1.21	1.22	1.22	1.21	1.20	1.18			
175	1.74	1.75	1.75	1.74	1.73	1.71	1.69	1.68	1.30	1.30	1.30	1.30	1.31	1.30	1.29	1.27			
180	1.54	1.55	1.54	1.53	1.52	1.51	1.50	1.50	1.55	1.55	1.55	1.55	1.54	1.53	1.52	1.52			

C Range: 0 - 360DEG
 C Interval: 22.5DEG
 Test Speed: HIGH
 Temperature:25.2DEG
 Operators:ben
 Test Date:2017-08-07

γ Range: 0 - 180DEG
 γ Interval: 1.0DEG
 Test System:EVERFINE GO-R5000_V2 SYSTEM V2.0.351
 Humidity:45%
 Test Distance:2.447m [K=1.0000]
 Remarks: