



LED VaporProof Fixture Installation Instruction

High Efficiency Series

The ASD LED Vaporproof fixture is a contemporary lighting fixture widely used in many different commercial and residential applications. It has many features that make it the perfect choice for wet and dusty locations. This fixture is polycarbonate, not plastic, which makes it extremely durable, impact resistant and able to maintain its color and luster over time. We use stainless clips and mounting hardware to make it this a high quality fixture.

ASD LED Vaporproof fixtures are very efficient at reducing your energy costs by providing brighter crisp light while lowering your energy consumption. They are very easy to install and are the perfect replacement for your existing fluorescent fixture.

These fixtures can be used in applications such as car washes, parking garages, stairwells, coolers, pool areas and more.

FEATURES AND BENEFITS:

- ▶ Low energy consumption
- ▶ Contemporary design
- ▶ 3,500K, 4,000K & 5,000K available
- ▶ Luminous efficiency 110 lm/W
- ▶ Surface mounted luminaire
- ▶ Suitable for Wet Locations
- ▶ L-70 Life > 90,000 hrs
- ▶ DesignLights Consortium (DLC) listed
- ▶ cULus certified
- ▶ 5-year limited warranty



ORDERING MATRIX:

Family	Size	Dimmable	Watts	CCT	Lens	Series
ASD-LVP	4	N	31	XX	X	HE
LED VaporProof	4 ft	Non-dimmable	31 W	35 = 3,500 K 40 = 4,000 K 50 = 5,000 K	M = Translucent white lens C = Clear lens	High efficiency

LED VAPORPROOF FIXTURE:

Model	Type	Watts	Dimming Compatible	CCT	Lumens	Dimensions (LxWxH)
ASD-LVP-4N3135MHE	4 ft	31 W	No	3,500 K	3,950 lm	47.2" x 4.17" x 3.3"
ASD-LVP-4N3140MHE	4 ft	31 W	No	4,000 K	3,410 lm	47.2" x 4.17" x 3.3"
ASD-LVP-4N3150MHE	4 ft	31 W	No	5,000 K	3,410 lm	47.2" x 4.17" x 3.3"
ASD-LVP-4N3140CHE	4 ft	31 W	No	4,000 K	3,569 lm	47.2" x 4.17" x 3.3"
ASD-LVP-4N3150CHE	4 ft	31 W	No	5,000 K	3,642 lm	47.2" x 4.17" x 3.3"



LED VaporProof Fixture Installation Instruction

High Efficiency Series

PRODUCT SPECIFICATIONS:

Construction & Materials

Lens	Polycarbonate translucent white lens and clear lens options
Housing	Polycarbonate housing (PC)
Clips	Stainless steel clips
Finish Color	White
Weight	4.4 lb (2.0 kg)

Environmental System

Work Environment	Suitable for Wet Locations
Operating Temperature	-4°F to 104°F (-20°C to 40°C)
L-70 Life	> 90,000 hrs

Optical System

Luminous Flux	ASD-LVP-4N3135MHE	3,950 lm	ASD-LVP-4N3140CHE	3,569 lm
	ASD-LVP-4N3140MHE	3,410 lm	ASD-LVP-4N3150CHE	3,642 lm
	ASD-LVP-4N3150MHE	3,410 lm		
Color Temperature	3,500 K, 4,000 K, 5,000 K			
CRI	>80			

Electrical System

Input Voltage	100~277VAC 50/60 Hz	
Max input current	450 mA	
Inrush current	35 A	
Action time (Inrush current)	700 µs	
AC input range	min 90 V	max 285 V
Off State Power	0 W	
Power Consumption	31 W	
Power Factor	≥ 0.9	
Output voltage	30-42 V	
Max output current	700 mA	
LED driver class	B, class 2	

Regular and Voluntary Certifications

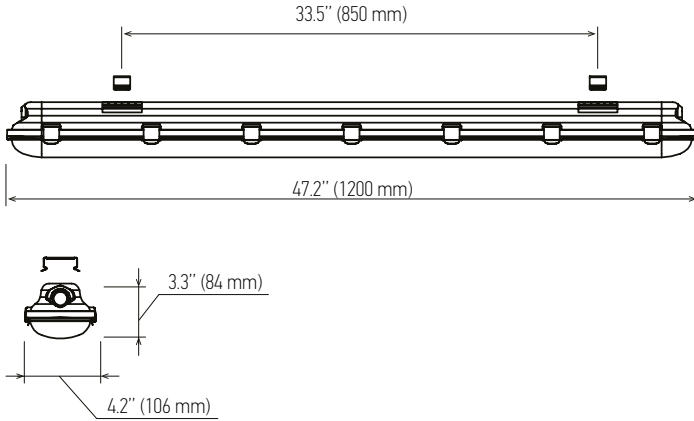
5-year limited warranty	
DesignLights Consortium (DLC) listed	
cULus certified	E473804 – luminaire E473855 – driver

The LED Vapor Proof fixture is designed to install as a surface mounted luminaires.

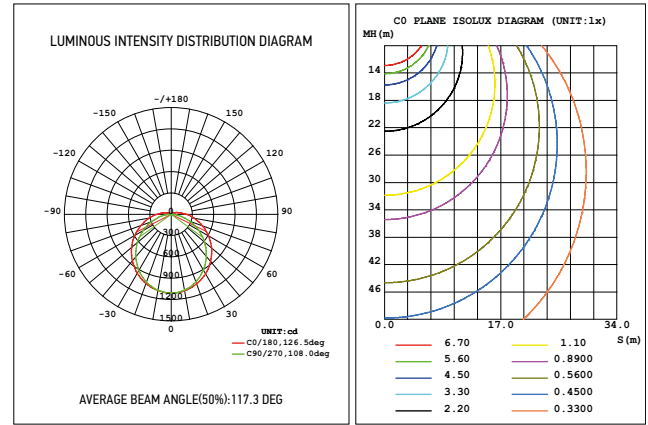


LED VaporProof Fixture Installation Instruction

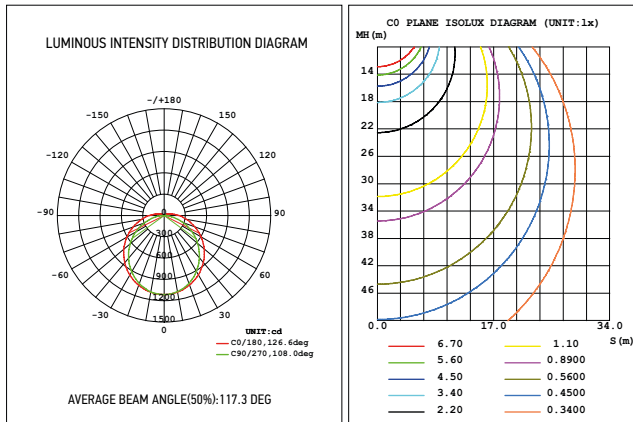
High Efficiency Series



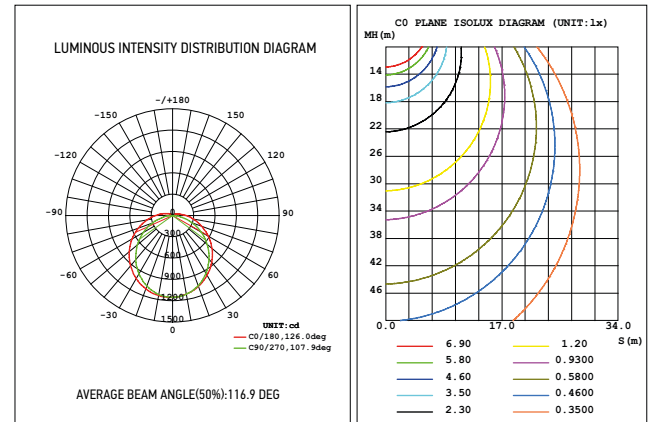
ASD-LVP-4N3135MHE



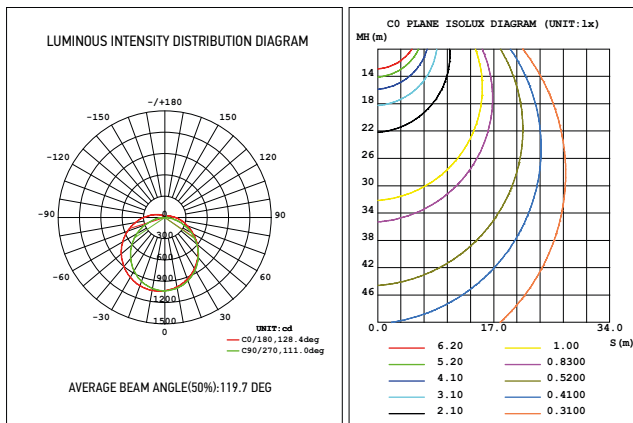
ASD-LVP-4N3140MHE



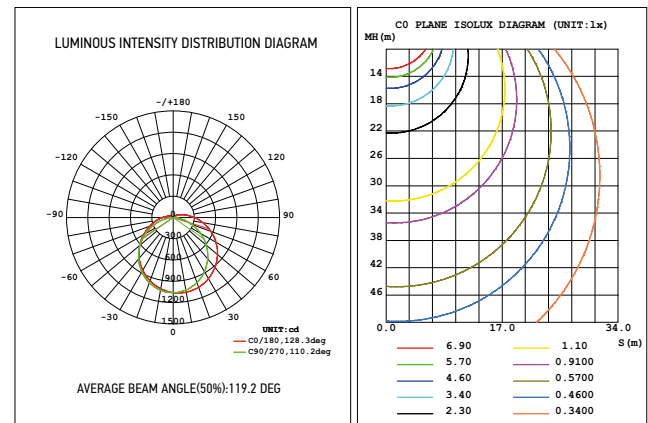
ASD-LVP-4N3150MHE



ASD-LVP-4N3140CHE



ASD-LVP-4N3150CHE



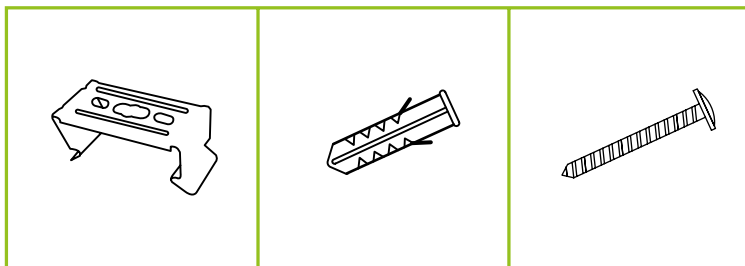


LED VaporProof Fixture Installation Instruction

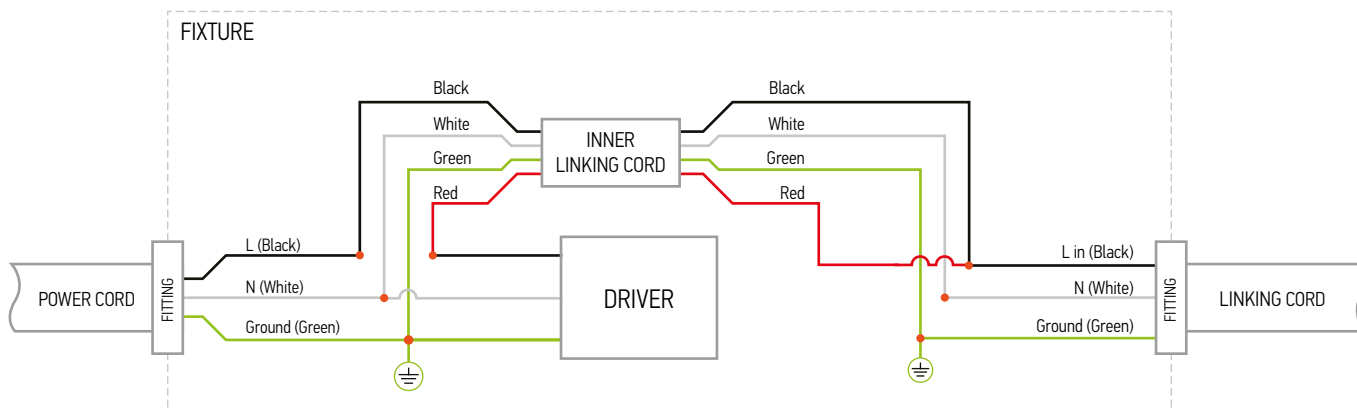
High Efficiency Series

PACKAGE CONTENTS:

Description	Q-ty
LED Vapor Proof Fixture	1
Mounting brackets	2
Plastic anchors	4
Screw for anchor	4
Box	1
Installation Instructions	1



ELECTRICAL SCHEMATIC DIAGRAM



⚠ WARNING

RISK OF PERSONAL INJURY – READ and follow all WARNINGS and installation instructions.

Keep or give to the owner for future reference.

Risk of cuts: Wear gloves to prevent cuts or abrasions when removing from carton, handling, installing, and maintaining this product.

Risk of electric shock: This product must be installed in accordance with the applicable installation code by a person familiar with the construction and operation of the product and the hazards involved.

Risk of Fire: Minimum 90°C supply conductors. Consult a qualified electrician to ensure correct branch circuit conductor.

ASD® assumes no responsibility for claims arising out of improper or careless installation or handling of this product.



LED VaporProof Fixture Installation Instruction

High Efficiency Series

INSTALLATION GUIDE

IMPORTANT SAFETY INFORMATION:

Please read all the instructions below before installation.

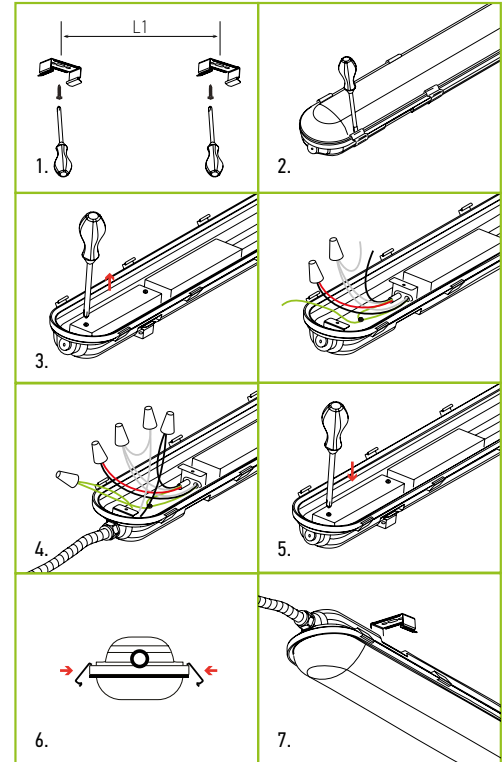
- ▶ Make sure that the supply voltage corresponds to the rated product voltage.
- ▶ The product must be installed by a qualified electrician in accordance with the National Electrical Code and corresponding local codes.
- ▶ If the product is damaged, do not use it.

INSTALLATION STEPS

1. Affix the mounting brackets to the ceiling/wall. Distance between the brackets (L1) should be $33.5" (850 \text{ mm}) \pm 1.2" (30 \text{ mm})$
2. Open clips and remove diffuser.
3. Open the cover of the junction box.
4. Insert the power cord wires in to the junction box, connect lines black to black, white to white, green to green.

WARNING: if there is no ground supply wire, stop installation and consult a qualified electrician. Once wire connections are made, secure each with a wire nut (CC).

5. Affix the cover of the junction box.
6. Affix the diffuser cover by the clips.
7. Affix the fixture to the ceiling/wall by the mounting brackets.



CONNECTING MULTIPLE FIXTURES TO ONE SWITCH

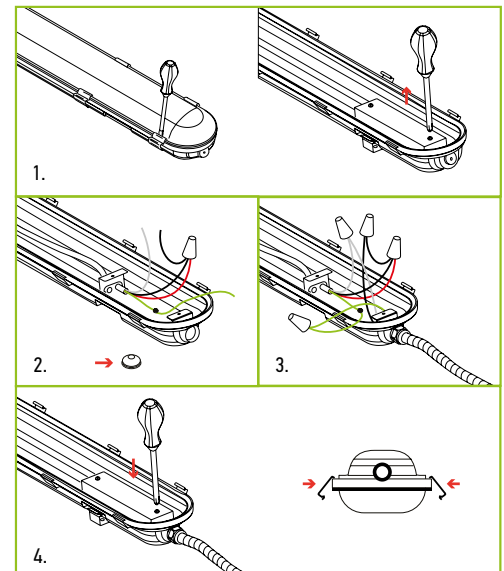
1. Open clips and remove diffuser. Open the cover of the junction box.
2. Remove gasket at the end of the fixture and attach watertight fitting (customer supplied).
3. Insert the power cord wires in to the junction box of the next linked luminaire, connect lines black to black, white to white, green to green.

WARNING: if there is no ground supply wire, stop installation and consult a qualified electrician. Once wire connections are made, secure each with a wire nut (CC).

4. Affix the cover of the junction box. Affix the diffuser cover by the clips.

LINKING LIMITS:

Linkable Quantities Depending on Voltage		
110V	200V	277V
12 pcs	24 pcs	36 pcs





LED VaporProof Fixture Installation Instruction

High Efficiency Series

ORDERING INFORMATION

LED VAPORPROOF FIXTURE ORDERING INFORMATION:

Model	Type	Watts	CCT	UPC	GTIN 14	Product Code	Pcs in one Carton	Carton Size	Carton Weight
ASD-LVP-4N3135MHE	4 ft	31 W	3,500 K	859961005711	10859961005718	023.0107	9	49.6"x14"x11.7"	49.6 lbs
ASD-LVP-4N3140MHE	4 ft	31 W	4,000 K	859961005599	10859961005596	023.0105	9	49.6"x14"x11.7"	49.6 lbs
ASD-LVP-4N3150MHE	4 ft	31 W	5,000 K	859961005605	10859961005602	023.0106	9	49.6"x14"x11.7"	49.6 lbs
ASD-LVP-4N3140CHE	4 ft	31 W	4,000 K	819201020256	10819201020253	023.0125	9	49.6"x14"x11.7"	49.6 lbs
ASD-LVP-4N3150CHE	4 ft	31 W	5,000 K	819201020263	10819201020260	023.0126	9	49.6"x14"x11.7"	49.6 lbs