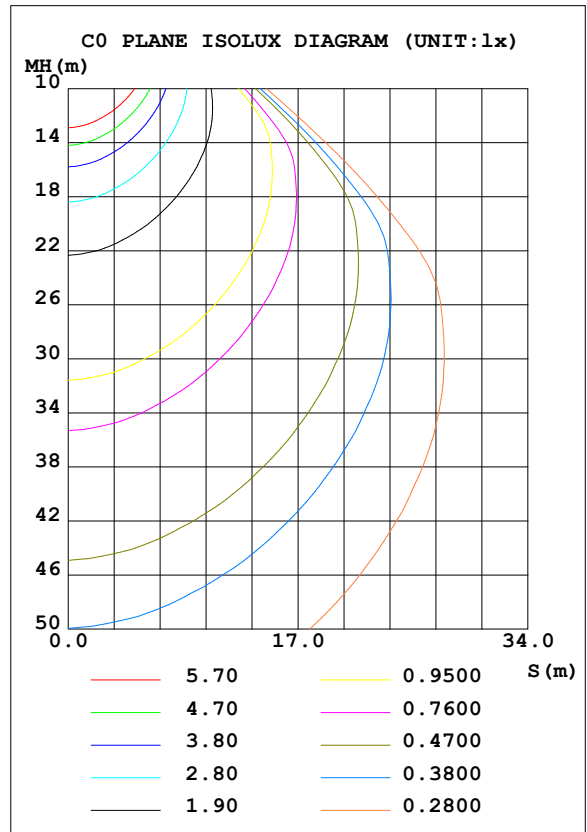
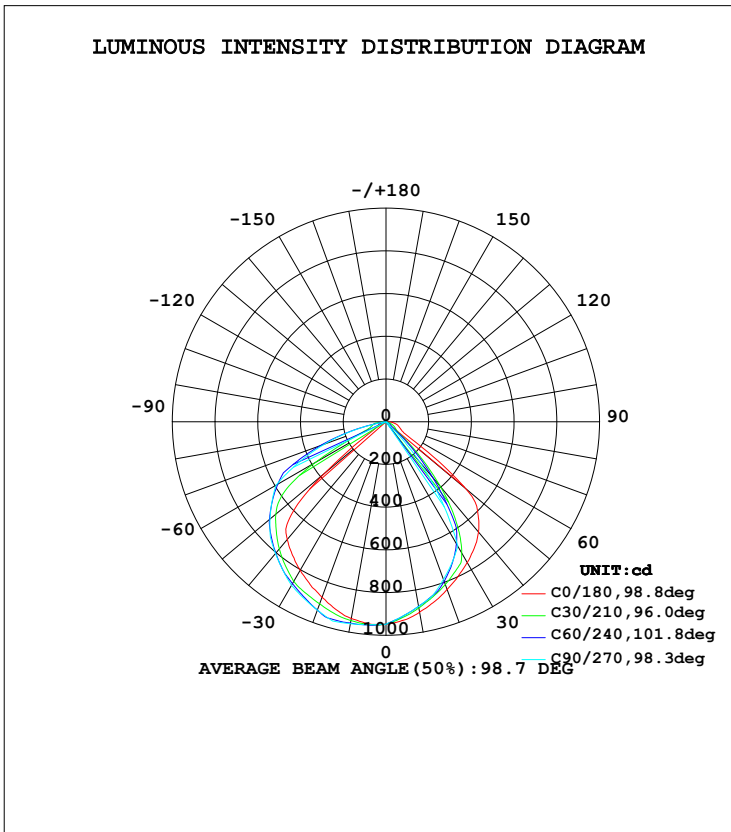




LUMINAIRE PHOTOMETRIC TEST REPORT

Test:U:120.0V I:0.1630A P:19.33W PF:0.9884 Lamp Flux:2005.11x1 lm		
NAME: ASD-LSR-2030-AP-W	TYPE:	WEIGHT:
SPEC.:	DIM.:	SERIAL No.:
MFR: ASD Lighting Corp	SUR.:	Shielding Angle:

DATA OF LAMP		PHOTOMETRIC DATA Eff: 103.74 lm/W			
MODEL	ASD-LSR-2030-AP-W	I _{max} (cd)	966.5	S/MH (C0/180)	1.27
NOMINAL POWER (W)	20	LOR (%)	100.0	S/MH (C90/270)	1.38
RATED VOLTAGE (V)	120	TOTAL FLUX (lm)	2005.1	η UP, DN (C0-180)	0.0, 31.4
NOMINAL FLUX (lm)	2005.11	CIE CLASS	DIRECT	η UP, DN (C180-360)	0.0, 68.6
LAMPS INSIDE	1	η up (%)	0.0	CIBSE SHR NOM	1.00
TEST VOLTAGE (V)	120	η down (%)	100.0	CIBSE SHR MAX	1.15



C Range: 0 - 360DEG
 C Interval: 5.0DEG
 Test Speed: HIGH
 Temperature: 27.3DEG
 Operators: QC
 Test Date: 2018-09-07

γ Range: 0 - 90DEG
 γ Interval: 0.5DEG
 Test System: EVERFINE GO-2000B_V1 SYSTEM V2.0.295
 Humidity: 65.0%
 Test Distance: 10.382m [K=1.0000]
 Remarks:



ZONAL FLUX DIAGRAM

ZONAL FLUX DIAGRAM:

γ	C0	C45	C90	C135	C180	C225	C270	C315	γ	Φ zone	Φ total	$\%lum, lamp$
5	933.0	915.4	913.0	924.8	949.1	954.2	953.9	943.0	0- 5	22.48	22.48	1.12,1.12
10	905.6	880.2	878.1	892.1	935.4	952.1	959.9	933.0	5- 10	66.21	88.68	4.42,4.42
15	873.2	843.9	843.1	857.9	909.4	945.2	966.0	919.6	10- 15	107.3	196.0	9.78,9.78
20	835.6	810.0	786.4	818.9	874.8	932.1	938.8	904.9	15- 20	144.5	340.5	17,17
25	799.2	742.3	729.6	736.8	840.8	899.2	911.6	875.9	20- 25	175.8	516.4	25.8,25.8
30	761.3	641.4	672.8	616.4	803.4	866.9	884.4	844.2	25- 30	200.6	717.0	35.8,35.8
35	721.4	498.2	458.5	448.2	762.7	835.0	844.7	811.7	30- 35	214.6	931.6	46.5,46.5
40	673.6	310.4	244.2	247.9	718.9	799.5	805.1	772.8	35- 40	211.5	1143	57,57
45	608.9	166.0	29.90	128.0	637.8	748.5	765.4	715.6	40- 45	194.0	1337	66.7,66.7
50	488.5	77.22	21.43	54.26	377.9	694.0	708.6	656.3	45- 50	168.7	1506	75.1,75.1
55	189.4	37.75	12.96	18.76	99.74	634.4	651.8	589.3	50- 55	144.6	1650	82.3,82.3
60	88.82	27.45	4.491	11.47	53.23	508.2	595.1	467.8	55- 60	119.5	1770	88.3,88.3
65	73.82	16.70	3.108	4.294	43.66	334.3	450.1	358.5	60- 65	93.50	1863	92.9,92.9
70	63.23	8.708	1.725	0.3067	34.18	177.3	305.1	260.6	65- 70	66.79	1930	96.3,96.3
75	53.89	4.324	0.3415	0.3251	24.58	108.6	160.1	171.4	70- 75	44.17	1974	98.5,98.5
80	40.02	0.2563	0	0.2733	13.64	62.04	0	85.46	75- 80	23.45	1998	99.6,99.6
85	24.37	0	0	0	2.964	0	0	0	80- 85	6.529	2004	100,100
90	2.896	0	0	0	0.1636	0	0	0	85- 90	0.8658	2005	100,100
95									90- 95			
100									95-100			
105									100-105			
110									105-110			
115									110-115			
120									115-120			
125									120-125			
130									125-130			
135									130-135			
140									135-140			
145									140-145			
150									145-150			
155									150-155			
160									155-160			
165									160-165			
170									165-170			
175									170-175			
180									175-180			
DEG	LUMINOUS INTENSITY:cd								UNIT:lm			

C Range: 0 - 360DEG
 C Interval: 5.0DEG
 Test Speed: HIGH
 Temperature:27.3DEG
 Operators:QC
 Test Date:2018-09-07

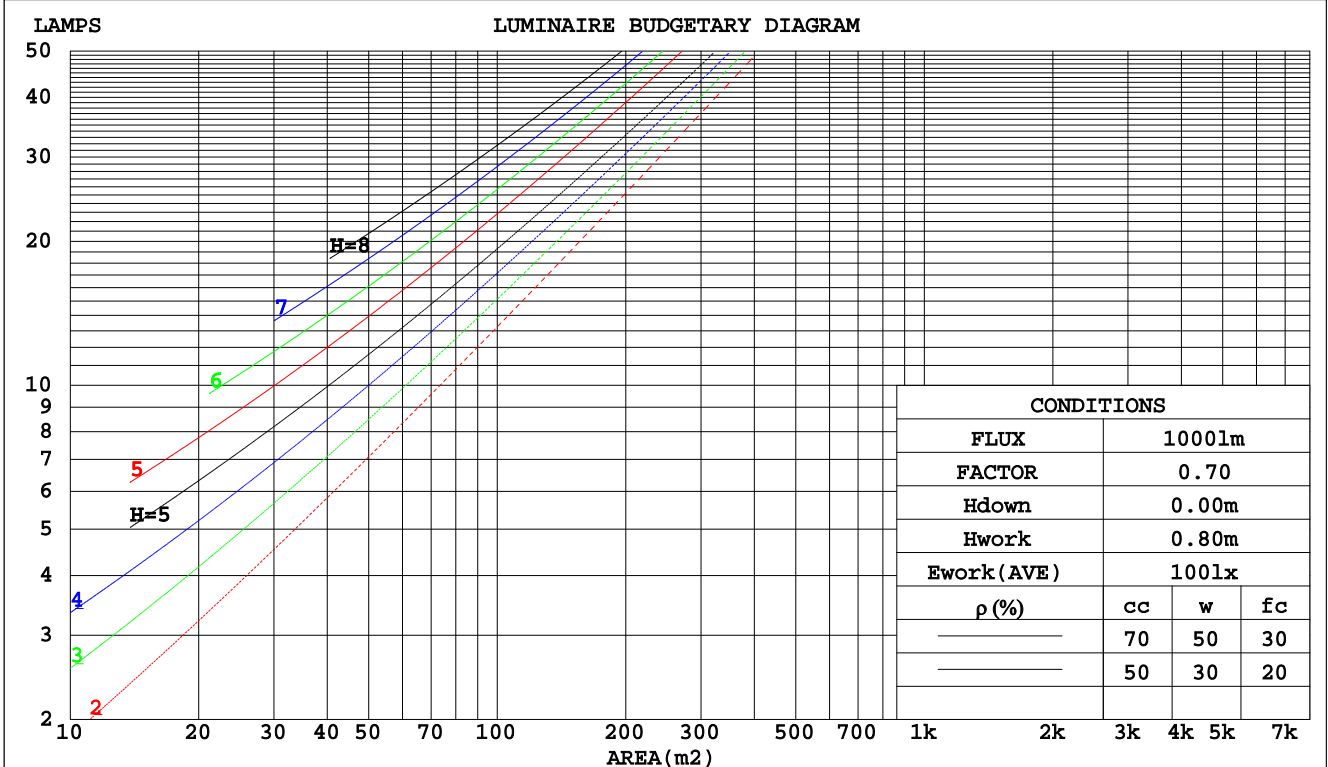
γ Range: 0 - 90DEG
 γ Interval: 0.5DEG
 Test System:EVERFINE GO-2000B_V1 SYSTEM V2.0.295
 Humidity:65.0%
 Test Distance:10.382m [K=1.0000]
 Remarks:



CU AND LUMINAIRE BUDGETARY ESTIMATE DIAGRAM

Test:U:120.0V I:0.1630A P:19.33W PF:0.9884 Lamp Flux:2005.11x1 lm		
NAME: ASD-LSR-2030-AP-W	TYPE:	WEIGHT:
SPEC.:	DIM.:	SERIAL No.:
MFR: ASD Lighting Corp	SUR.:	Shielding Angle:

pcc	80%			70%			50%			30%			10%			0
pw	50%	30%	10%	50%	30%	10%	50%	30%	10%	50%	30%	10%	50%	30%	10%	0
pfc	20%			20%			20%			20%			20%			0
RCR	RCR:Room Cavity Ratio						Coefficients of Utilization(CU)									
0.0	1.19	1.19	1.19	1.16	1.16	1.16	1.11	1.11	1.11	1.06	1.06	1.06	1.02	1.02	1.02	1.00
1.0	1.07	1.03	.00	1.04	1.01	.98	1.00	.98	.95	.96	.94	.92	.93	.91	.90	.88
2.0	.95	.89	.84	.93	.88	.83	.90	.85	.81	.86	.83	.79	.83	.80	.78	.76
3.0	.85	.77	.72	.83	.77	.71	.80	.75	.70	.78	.73	.69	.75	.71	.68	.66
4.0	.76	.68	.62	.75	.67	.62	.72	.66	.61	.70	.65	.60	.68	.63	.59	.57
5.0	.69	.61	.55	.68	.60	.54	.66	.59	.54	.64	.58	.53	.62	.57	.53	.51
6.0	.62	.54	.48	.61	.54	.48	.60	.53	.48	.58	.52	.47	.57	.51	.47	.45
7.0	.57	.49	.43	.56	.49	.43	.55	.48	.43	.53	.47	.42	.52	.46	.42	.40
8.0	.52	.44	.39	.52	.44	.39	.50	.44	.39	.49	.43	.38	.48	.42	.38	.36
9.0	.48	.41	.35	.48	.40	.35	.47	.40	.35	.46	.39	.35	.45	.39	.35	.33
10.0	.45	.37	.32	.44	.37	.32	.43	.37	.32	.42	.36	.32	.41	.36	.32	.30



C Range: 0 - 360DEG
 C Interval: 5.0DEG
 Test Speed: HIGH
 Temperature: 27.3DEG
 Operators: QC
 Test Date: 2018-09-07

γ Range: 0 - 90DEG
 γ Interval: 0.5DEG
 Test System: EVERFINE GO-2000B_V1 SYSTEM V2.0.295
 Humidity: 65.0%
 Test Distance: 10.382m [K=1.0000]
 Remarks:



WEC AND CCEC

Test:U:120.0V I:0.1630A P:19.33W PF:0.9884 Lamp Flux:2005.11x1 lm		
NAME: ASD-LSR-2030-AP-W	TYPE:	WEIGHT:
SPEC.:	DIM.:	SERIAL No.:
MFR: ASD Lighting Corp	SUR.:	Shielding Angle:

ρcc	80%			70%			50%			30%			10%			0
ρw	50%	30%	10%	50%	30%	10%	50%	30%	10%	50%	30%	10%	50%	30%	10%	0
ρfc	20%			20%			20%			20%			20%			0
RCR	RCR:Room Cavity Ratio						Wall Exitance Coefficients(WEC)									
0.0																
1.0	.257	.146	.046	.250	.143	.045	.237	.136	.044	.225	.130	.042	.214	.124	.040	
2.0	.250	.137	.042	.244	.134	.041	.232	.129	.040	.222	.124	.039	.212	.120	.038	
3.0	.236	.126	.038	.231	.123	.037	.221	.120	.036	.211	.116	.036	.203	.112	.035	
4.0	.221	.115	.034	.217	.113	.034	.208	.110	.033	.200	.107	.032	.192	.104	.032	
5.0	.207	.106	.031	.203	.104	.030	.196	.102	.030	.188	.099	.030	.182	.097	.029	
6.0	.195	.098	.028	.191	.096	.028	.184	.094	.027	.178	.092	.027	.171	.090	.027	
7.0	.183	.090	.026	.180	.089	.025	.173	.088	.025	.168	.086	.025	.162	.084	.025	
8.0	.172	.084	.024	.169	.083	.024	.164	.082	.023	.158	.080	.023	.154	.079	.023	
9.0	.162	.079	.022	.160	.078	.022	.155	.077	.022	.150	.075	.022	.146	.074	.021	
10.0	.154	.074	.020	.151	.073	.020	.147	.072	.020	.142	.071	.020	.138	.070	.020	

ρcc	80%			70%			50%			30%			10%			0
ρw	50%	30%	10%	50%	30%	10%	50%	30%	10%	50%	30%	10%	50%	30%	10%	0
ρfc	20%			20%			20%			20%			20%			0
RCR	RCR:Room Cavity Ratio						Ceiling Cavity Exitance Coefficients(CCEC)									
0.0																
1.0	.190	.190	.190	.163	.163	.163	.111	.111	.111	.064	.064	.064	.020	.020	.020	
2.0	.177	.157	.139	.151	.134	.119	.103	.092	.082	.060	.054	.048	.019	.017	.016	
3.0	.167	.132	.103	.143	.114	.089	.098	.079	.062	.056	.046	.036	.018	.015	.012	
4.0	.158	.114	.079	.135	.098	.069	.093	.068	.048	.054	.040	.028	.017	.013	.009	
5.0	.150	.100	.062	.129	.087	.054	.089	.060	.038	.051	.035	.023	.016	.012	.007	
6.0	.143	.090	.051	.123	.078	.044	.084	.054	.031	.049	.032	.018	.016	.010	.006	
7.0	.136	.081	.042	.117	.070	.036	.081	.049	.026	.047	.029	.015	.015	.009	.005	
8.0	.129	.074	.035	.111	.064	.031	.077	.045	.022	.045	.027	.013	.014	.009	.004	
9.0	.123	.068	.030	.106	.059	.027	.073	.042	.019	.043	.025	.011	.014	.008	.004	
10.0	.118	.063	.027	.101	.055	.023	.070	.039	.016	.041	.023	.010	.013	.007	.003	

C Range: 0 - 360DEG
 C Interval: 5.0DEG
 Test Speed: HIGH
 Temperature:27.3DEG
 Operators:QC
 Test Date:2018-09-07

γ Range: 0 - 90DEG
 γ Interval: 0.5DEG
 Test System:EVERFINE GO-2000B_V1 SYSTEM V2.0.295
 Humidity:65.0%
 Test Distance:10.382m [K=1.0000]
 Remarks:



UGR(Unified Glare Rating) Table

Test:U:120.0V I:0.1630A P:19.33W PF:0.9884 Lamp Flux:2005.11x1 lm										
NAME: ASD-LSR-2030-AP-W					TYPE:			WEIGHT:		
SPEC.:					DIM.:			SERIAL No.:		
MFR: ASD Lighting Corp					SUR.:			Shielding Angle:		
ceiling/cavity	0.7	0.7	0.5	0.5	0.3	0.7	0.7	0.5	0.5	0.3
walls	0.5	0.3	0.5	0.3	0.3	0.5	0.3	0.5	0.3	0.3
working plane	0.2	0.2	0.2	0.2	0.2	0.2	0.2	0.2	0.2	0.2
Room dimensions	Viewed crosswise					Viewed endwise				
x = 2H y = 2H	22.2	23.6	22.5	23.8	24.0	17.2	18.6	17.5	18.8	19.0
3H	22.6	23.8	22.8	24.0	24.3	17.0	18.3	17.3	18.5	18.7
4H	22.9	24.1	23.2	24.3	24.5	16.9	18.1	17.2	18.4	18.6
6H	23.2	24.4	23.6	24.6	24.9	16.8	17.9	17.1	18.2	18.5
8H	23.4	24.5	23.8	24.8	25.1	16.8	17.8	17.1	18.1	18.4
12H	23.6	24.6	24.0	24.9	25.2	16.7	17.7	17.1	18.0	18.3
4H 2H	21.9	23.1	22.2	23.4	23.6	17.1	18.2	17.4	18.5	18.7
3H	22.3	23.4	22.7	23.7	23.9	16.9	17.9	17.2	18.2	18.5
4H	22.7	23.6	23.1	23.9	24.3	16.8	17.7	17.1	18.0	18.4
6H	23.1	24.0	23.5	24.3	24.7	16.7	17.5	17.1	17.9	18.2
8H	23.4	24.1	23.8	24.5	24.9	16.6	17.4	17.0	17.8	18.1
12H	23.6	24.3	24.0	24.6	25.0	16.6	17.3	17.0	17.7	18.1
8H 4H	22.6	23.3	23.0	23.7	24.1	16.7	17.5	17.1	17.8	18.2
6H	23.0	23.6	23.4	24.0	24.5	16.6	17.3	17.1	17.7	18.1
8H	23.2	23.8	23.7	24.2	24.7	16.6	17.1	17.0	17.6	18.0
12H	23.5	23.9	23.9	24.4	24.9	16.5	17.0	17.0	17.5	17.9
12H 4H	22.5	23.2	22.9	23.6	24.0	16.7	17.4	17.1	17.8	18.2
6H	23.0	23.5	23.4	23.9	24.4	16.6	17.1	17.0	17.6	18.0
8H	23.2	23.7	23.7	24.1	24.6	16.6	17.0	17.0	17.5	17.9
Variations with the observer position at spacings:										
S = 1.0H	+ 1.6 / - 2.1					+ 2.4 / - 9.5				
1.5H	+ 3.2 / - 4.0					+ 4.6 / - 7.4				
2.0H	+ 5.9 / - 4.0					+ 2.4 / - 4.6				

CIE Pub.117 Corrected 2005 lm Total Lamp Luminous Flux.(8log(F/F0) = 2.4)

C Range: 0 - 360DEG
C Interval: 5.0DEG
Test Speed: HIGH
Temperature:27.3DEG
Operators:QC
Test Date:2018-09-07

γ Range: 0 - 90DEG
 γ Interval: 0.5DEG
Test System:EVERFINE GO-2000B_V1 SYSTEM V2.0.295
Humidity:65.0%
Test Distance:10.382m [K=1.0000]
Remarks:



UTILIZATION FACTORS TABLE

Test:U:120.0V I:0.1630A P:19.33W PF:0.9884 Lamp Flux:2005.11x1 lm		
NAME: ASD-LSR-2030-AP-W	TYPE:	WEIGHT:
SPEC.:	DIM.:	SERIAL No.:
MFR: ASD Lighting Corp	SUR.:	Shielding Angle:

REFLECTANCE										
Ceiling	0.8	0.8	0.8	0.7	0.7	0.7	0.5	0.5	0.5	0
Walls	0.7	0.5	0.3	0.7	0.5	0.3	0.7	0.5	0.3	0
Working plane	0.2	0.2	0.2	0.2	0.2	0.2	0.2	0.2	0.2	0
ROOM INDEX	UTILIZATION FACTORS(PERCENT) $k(RI) \times RCR = 5$									
k = 0.60	65	54	48	64	54	48	63	54	48	42
0.80	75	64	58	74	64	58	72	63	57	51
1.00	83	73	67	82	73	67	79	74	66	60
1.25	89	80	74	88	80	74	85	78	73	67
1.50	94	85	80	92	85	79	89	83	78	71
2.00	100	93	87	98	91	86	95	89	85	78
2.50	103	96	91	101	95	90	97	92	89	81
3.00	106	100	95	104	98	94	100	96	92	84
4.00	109	104	100	107	103	99	103	99	96	88
5.00	111	107	104	109	105	102	104	101	99	90
ROOM INDEX	UF(total)									Direct
According to DIN EN 13032-2 2004			Suspended				SHRNOM = 1.25			

C Range: 0 - 360DEG
 C Interval: 5.0DEG
 Test Speed: HIGH
 Temperature:27.3DEG
 Operators:QC
 Test Date:2018-09-07

γ Range: 0 - 90DEG
 γ Interval: 0.5DEG
 Test System:EVERFINE GO-2000B_V1 SYSTEM V2.0.295
 Humidity:65.0%
 Test Distance:10.382m [K=1.0000]
 Remarks:



ISOCANDELA DIAGRAM

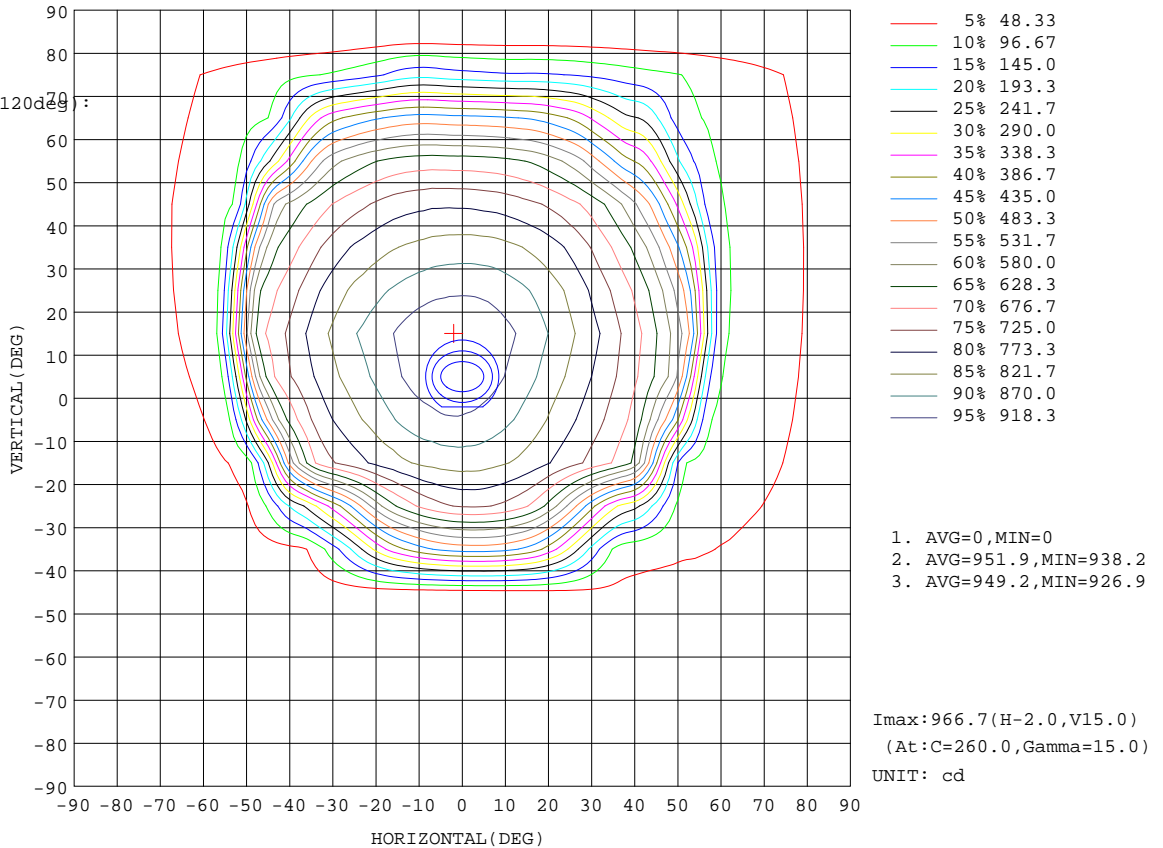
Test:U:120.0V I:0.1630A P:19.33W PF:0.9884 Lamp Flux:2005.11x1 lm		
NAME: ASD-LSR-2030-AP-W	TYPE:	WEIGHT:
SPEC.:	DIM.:	SERIAL No.:
MFR: ASD Lighting Corp	SUR.:	Shielding Angle:

Conical surface Flux(90deg):
1337 lm

%lum = 66.7%
%lamp = 66.7%

Conical surface Flux(120deg):
1769.8 lm

%lum = 88.3%
%lamp = 88.3%



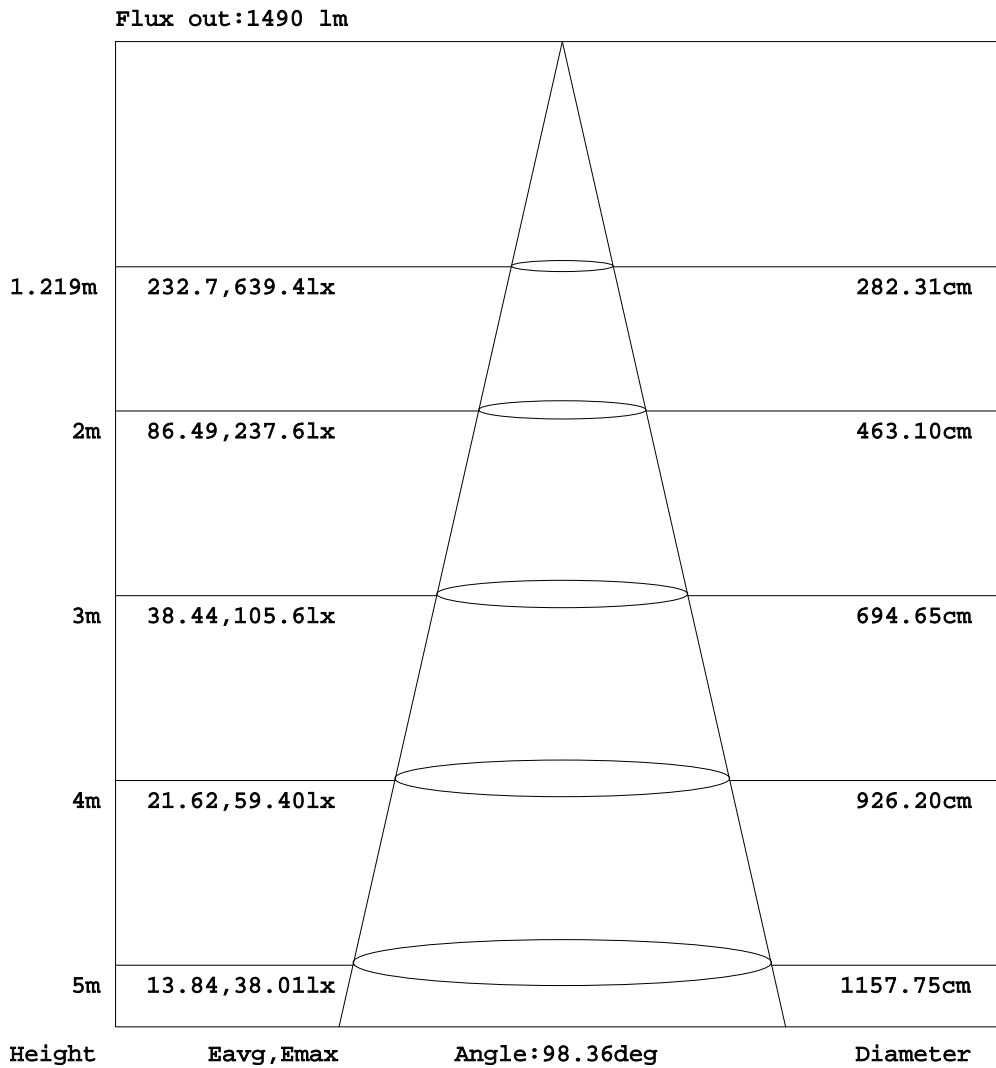
C Range: 0 - 360DEG
 C Interval: 5.0DEG
 Test Speed: HIGH
 Temperature: 27.3DEG
 Operators: QC
 Test Date: 2018-09-07

γ Range: 0 - 90DEG
 γ Interval: 0.5DEG
 Test System: EVERFINE GO-2000B_V1 SYSTEM V2.0.295
 Humidity: 65.0%
 Test Distance: 10.382m [K=1.0000]
 Remarks:



AAI Figure

Test:U:120.0V I:0.1630A P:19.33W PF:0.9884 Lamp Flux:2005.11x1 lm		
NAME: ASD-LSR-2030-AP-W	TYPE:	WEIGHT:
SPEC.:	DIM.:	SERIAL No.:
MFR: ASD Lighting Corp	SUR.:	Shielding Angle:



Note:The Curves indicate the illuminated area and the average illumination when the luminaire is at different distance.

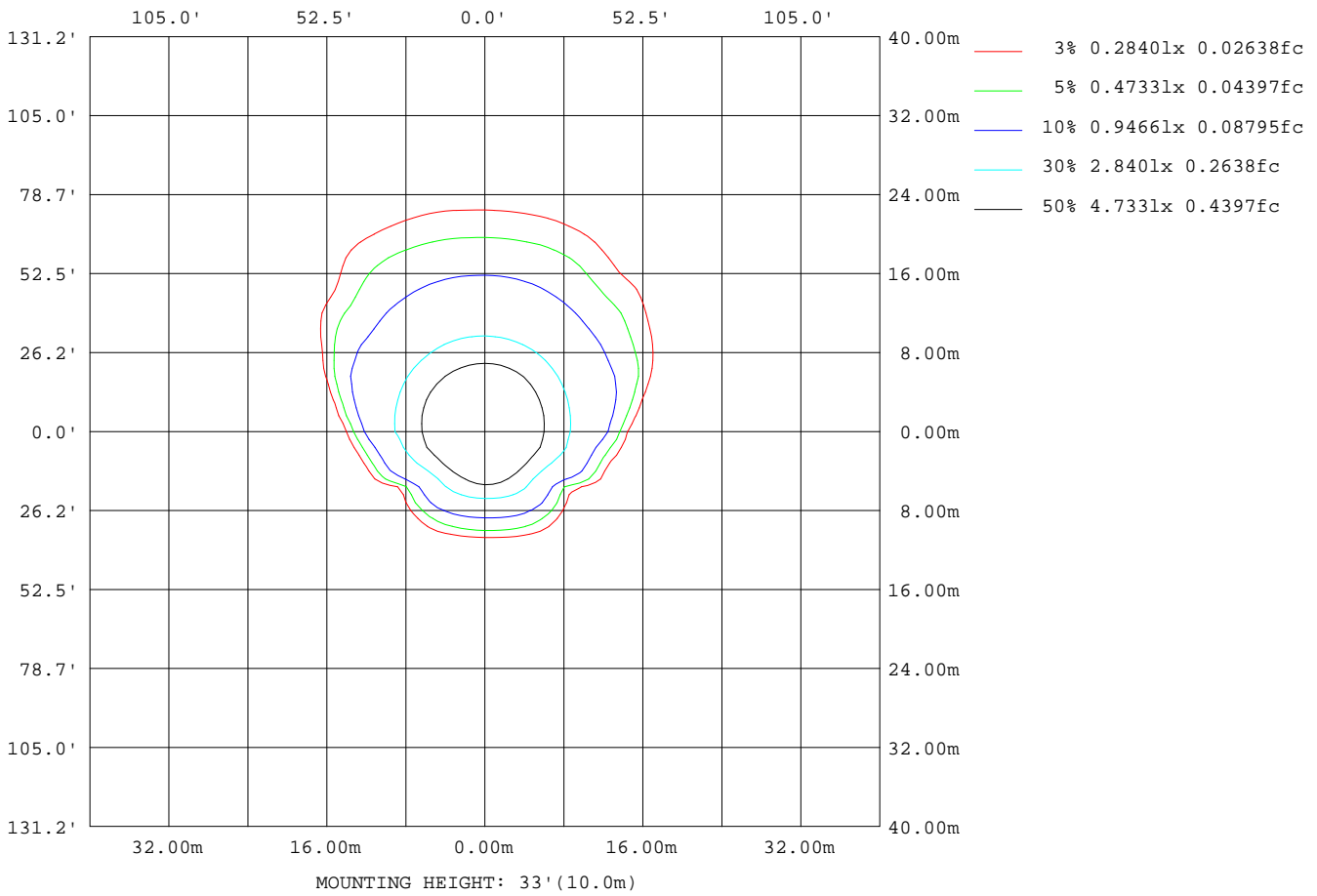
C Range: 0 - 360DEG
 C Interval: 5.0DEG
 Test Speed: HIGH
 Temperature:27.3DEG
 Operators:QC
 Test Date:2018-09-07

γ Range: 0 - 90DEG
 γ Interval: 0.5DEG
 Test System:EVERFINE GO-2000B_V1 SYSTEM V2.0.295
 Humidity:65.0%
 Test Distance:10.382m [K=1.0000]
 Remarks:



ISOLUX DIAGRAM

Test:U:120.0V I:0.1630A P:19.33W PF:0.9884 Lamp Flux:2005.11x1 lm		
NAME: ASD-LSR-2030-AP-W	TYPE:	WEIGHT:
SPEC.:	DIM.:	SERIAL No.:
MFR: ASD Lighting Corp	SUR.:	Shielding Angle:



C Range: 0 - 360DEG
 C Interval: 5.0DEG
 Test Speed: HIGH
 Temperature: 27.3DEG
 Operators: QC
 Test Date: 2018-09-07

γ Range: 0 - 90DEG
 γ Interval: 0.5DEG
 Test System: EVERFINE GO-2000B_V1 SYSTEM V2.0.295
 Humidity: 65.0%
 Test Distance: 10.382m [K=1.0000]
 Remarks:



LED Avg.L Report

Test:U:120.0V I:0.1630A P:19.33W PF:0.9884 Lamp Flux:2005.11x1 lm		
NAME: ASD-LSR-2030-AP-W	TYPE:	WEIGHT:
SPEC.:	DIM.:	SERIAL No.:
MFR: ASD Lighting Corp	SUR.:	Shielding Angle:

AvgL	cd/m2
L_0~180 (65) av	13899
L_0~180 (75) av	15160
L_0~180 (85) av	15679
L_90~270 (65) av	53615
L_90~270 (75) av	30992
L_90~270 (85) av	0
L_45 (65) av	42222
L_45 (75) av	27496
L_45 (85) av	0

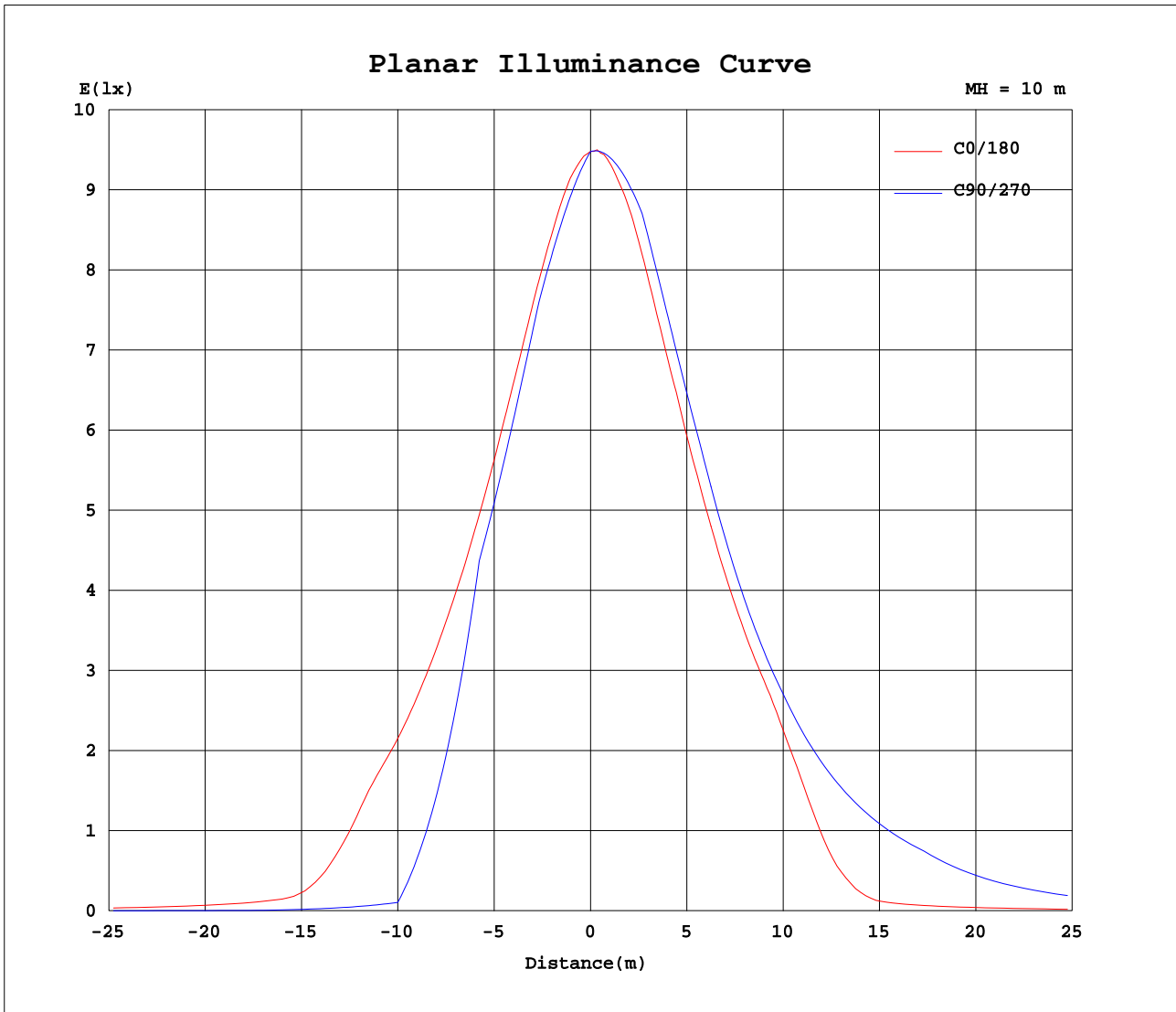
Standard: GB/T 29293-2012

C Range: 0 - 360DEG
 C Interval: 5.0DEG
 Test Speed: HIGH
 Temperature:27.3DEG
 Operators:QC
 Test Date:2018-09-07

γ Range: 0 - 90DEG
 γ Interval: 0.5DEG
 Test System:EVERFINE GO-2000B_V1 SYSTEM V2.0.295
 Humidity:65.0%
 Test Distance:10.382m [K=1.0000]
 Remarks:



Planar Illuminance Curve



C Range: 0 - 360DEG
C Interval: 5.0DEG
Test Speed: HIGH
Temperature: 27.3DEG
Operators: QC
Test Date: 2018-09-07

γ Range: 0 - 90DEG
 γ Interval: 0.5DEG
Test System: EVERFINE GO-2000B_V1 SYSTEM V2.0.295
Humidity: 65.0%
Test Distance: 10.382m [K=1.0000]
Remarks:



LUMINOUS DISTRIBUTION INTENSITY DATA

Test:U:120.0V I:0.1630A P:19.33W PF:0.9884 Lamp Flux:2005.11x1 lm		
NAME: ASD-LSR-2030-AP-W	TYPE:	WEIGHT:
SPEC.:	DIM.:	SERIAL No.:
MFR: ASD Lighting Corp	SUR.:	Shielding Angle:

Table--1

UNIT: cd

C (DEG) \ γ (DEG)	0	5	10	15	20	25	30	35	40	45	50	55	60	65	70	75	80	85	90
0	948	948	948	948	948	948	948	948	948	948	948	948	948	948	948	948	948	948	948
5	933	930	928	925	923	921	919	918	917	915	914	914	913	913	913	912	912	912	913
10	906	901	897	893	890	888	885	883	882	880	880	879	877	878	878	878	878	878	878
15	873	867	862	857	854	851	848	847	845	844	844	843	843	843	842	845	844	844	843
20	836	829	823	818	815	813	811	810	810	810	806	800	796	793	791	789	789	788	786
25	799	791	784	779	775	772	771	771	754	742	737	734	733	732	733	733	733	732	730
30	761	752	744	739	735	733	710	672	650	641	643	651	660	666	672	676	677	675	673
35	721	711	702	696	693	648	575	525	500	498	515	541	541	528	509	491	476	464	458
40	674	655	646	643	610	493	397	331	300	310	337	348	343	326	303	281	263	250	244
45	609	534	485	473	416	325	210	111	136	166	182	181	164	136	104	73.8	50.5	35.6	29.9
50	489	356	245	199	191	143	69.0	66.6	67.8	77.2	74.9	52.4	35.2	31.5	28.5	26.1	24.2	22.6	21.4
55	189	147	96.4	79.3	75.6	59.8	54.8	50.1	44.7	37.8	33.4	29.5	25.8	22.5	19.6	17.4	15.5	14.0	13.0
60	88.8	79.4	70.5	63.8	57.3	50.2	44.7	39.5	32.6	27.4	23.1	19.3	15.9	13.0	10.5	8.53	6.84	5.48	4.49
65	73.8	66.4	59.5	53.4	46.4	39.9	33.5	28.0	22.1	16.7	12.4	9.25	7.96	6.91	6.01	5.19	4.41	3.71	3.11
70	63.2	56.1	49.3	42.0	35.4	28.2	21.6	15.6	10.7	8.71	7.12	5.87	4.87	4.09	3.45	2.92	2.45	2.05	1.72
75	53.9	45.4	37.7	30.1	21.7	15.0	10.4	7.88	5.86	4.32	3.16	2.29	1.63	1.15	0.81	0.57	0.43	0.36	0.34
80	40.0	31.8	23.0	13.2	7.81	5.74	3.69	1.89	0.55	0.26	0.20	0.15	0.10	0.07	0.04	0.02	0.01	0.00	0.00
85	24.4	13.2	4.53	2.77	0.77	0.10	0.00	0.00	0.00	0.00	0.00	0.00	0.00	0.00	0.00	0.00	0.00	0.00	0.00
90	2.90	0.00	0.00	0.00	0.00	0.00	0.00	0.00	0.00	0.00	0.00	0.00	0.00	0.00	0.00	0.00	0.00	0.00	0.00

C Range: 0 - 360DEG
 C Interval: 5.0DEG
 Test Speed: HIGH
 Temperature:27.3DEG
 Operators:QC
 Test Date:2018-09-07

γ Range: 0 - 90DEG
 γ Interval: 0.5DEG
 Test System:EVERFINE GO-2000B_V1 SYSTEM V2.0.295
 Humidity:65.0%
 Test Distance:10.382m [K=1.0000]
 Remarks:



LUMINOUS DISTRIBUTION INTENSITY DATA

Test:U:120.0V I:0.1630A P:19.33W PF:0.9884 Lamp Flux:2005.11x1 lm		
NAME: ASD-LSR-2030-AP-W	TYPE:	WEIGHT:
SPEC.:	DIM.:	SERIAL No.:
MFR: ASD Lighting Corp	SUR.:	Shielding Angle:

Table--2

UNIT: cd

C (DEG) \ γ (DEG)	95	100	105	110	115	120	125	130	135	140	145	150	155	160	165	170	175	180	185
0	948	948	948	948	948	948	948	948	948	948	948	948	948	948	948	948	948	948	948
5	914	915	916	917	919	920	921	923	925	927	930	932	935	937	940	943	946	949	950
10	881	880	881	883	884	887	888	890	892	895	899	903	908	913	918	923	929	935	936
15	846	845	845	847	848	848	852	855	858	861	865	870	874	880	886	893	901	909	911
20	786	786	787	786	790	795	801	811	819	823	824	829	835	841	848	856	865	875	878
25	727	724	720	717	715	714	717	724	737	758	786	789	794	800	809	818	828	841	846
30	668	661	650	639	627	618	612	611	616	635	668	719	752	758	767	777	789	803	810
35	458	460	466	473	480	485	477	456	448	464	506	572	661	711	717	727	742	763	771
40	245	252	263	277	292	300	295	276	248	256	309	387	478	575	606	626	667	719	727
45	33.4	45.7	65.3	89.9	116	137	145	141	128	106	84.8	177	273	341	378	431	522	638	660
50	20.6	20.2	20.1	20.3	20.9	21.7	34.1	51.6	54.3	45.0	39.8	41.2	99.5	129	132	182	273	378	464
55	12.3	12.0	12.0	12.4	13.0	14.0	15.3	16.9	18.8	23.1	26.4	29.9	33.7	43.9	47.8	58.0	81.5	99.7	163
60	3.94	3.77	3.94	4.44	5.24	6.31	7.68	9.35	11.5	14.0	17.3	21.3	25.0	29.7	35.1	40.5	46.6	53.2	62.3
65	2.63	2.24	1.90	1.60	1.30	0.93	0.57	1.98	4.29	6.97	10.2	12.7	16.2	21.0	26.0	31.5	37.3	43.7	49.9
70	1.49	1.29	1.14	0.99	0.84	0.63	0.41	0.31	0.31	0.30	2.70	5.55	8.24	11.2	16.1	21.7	27.8	34.2	41.3
75	0.35	0.38	0.41	0.43	0.44	0.41	0.35	0.33	0.33	0.32	0.32	0.33	1.86	4.28	5.95	11.7	18.0	24.6	31.1
80	0.00	0.01	0.02	0.04	0.07	0.10	0.15	0.20	0.27	0.34	0.34	0.33	0.33	0.33	1.10	1.73	6.54	13.6	20.7
85	0.00	0.00	0.00	0.00	0.00	0.00	0.00	0.00	0.00	0.00	0.00	0.00	0.11	0.28	0.30	0.29	0.22	2.96	8.51
90	0.00	0.00	0.00	0.00	0.00	0.00	0.00	0.00	0.00	0.00	0.00	0.00	0.00	0.00	0.00	0.00	0.00	0.16	0.00

C Range: 0 - 360DEG
 C Interval: 5.0DEG
 Test Speed: HIGH
 Temperature:27.3DEG
 Operators:QC
 Test Date:2018-09-07

γ Range: 0 - 90DEG
 γ Interval: 0.5DEG
 Test System:EVERFINE GO-2000B_V1 SYSTEM V2.0.295
 Humidity:65.0%
 Test Distance:10.382m [K=1.0000]
 Remarks:



LUMINOUS DISTRIBUTION INTENSITY DATA

Test:U:120.0V I:0.1630A P:19.33W PF:0.9884 Lamp Flux:2005.11x1 lm		
NAME: ASD-LSR-2030-AP-W	TYPE:	WEIGHT:
SPEC.:	DIM.:	SERIAL No.:
MFR: ASD Lighting Corp	SUR.:	Shielding Angle:

Table--3

UNIT: cd

C (DEG) γ (DEG)	190	195	200	205	210	215	220	225	230	235	240	245	250	255	260	265	270	275	280
0	948	948	948	948	948	948	948	948	948	948	948	948	948	948	948	948	948	948	948
5	950	951	951	952	953	954	954	954	954	955	955	956	956	955	954	954	954	953	952
10	938	939	941	943	945	947	950	952	955	956	957	959	961	961	961	960	960	958	957
15	914	917	921	925	930	936	941	945	950	954	958	962	962	965	967	966	966	964	962
20	882	888	894	901	907	916	924	932	937	939	939	940	941	939	940	939	939	938	936
25	853	860	868	877	887	897	898	899	902	904	906	908	910	911	911	911	912	911	910
30	819	830	841	855	863	862	864	867	870	873	875	877	879	882	882	883	884	885	885
35	781	794	810	819	822	826	832	835	840	844	844	844	844	844	845	845	845	845	845
40	738	754	766	770	777	785	794	799	800	802	803	805	805	806	807	806	805	804	803
45	685	709	712	717	727	739	744	749	752	756	760	765	767	768	769	768	765	763	761
50	571	640	657	665	673	676	684	694	702	709	712	716	717	716	715	711	709	706	705
55	275	374	487	577	589	610	623	634	637	644	650	656	660	660	659	654	652	650	648
60	76.2	104	189	283	385	498	502	508	543	571	585	597	602	604	603	597	595	593	590
65	56.4	64.1	74.7	98.0	142	250	295	334	420	485	488	485	479	474	467	455	450	449	450
70	47.8	54.7	62.1	68.7	79.6	104	101	177	272	321	327	324	324	328	324	312	305	302	304
75	37.9	45.3	52.1	58.9	66.2	72.9	82.2	109	151	170	167	164	168	180	181	169	160	156	157
80	28.3	35.0	41.7	48.9	56.1	63.1	69.8	62.0	51.2	40.8	31.7	24.3	17.6	11.4	5.29	1.25	0.00	1.16	4.54
85	15.9	23.5	27.6	14.2	0.00	0.00	0.00	0.00	0.00	0.00	0.00	0.00	0.00	0.00	0.00	0.00	0.00	0.00	0.00
90	0.00	0.00	0.00	0.00	0.00	0.00	0.00	0.00	0.00	0.00	0.00	0.00	0.00	0.00	0.00	0.00	0.00	0.00	0.00

C Range: 0 - 360DEG
 C Interval: 5.0DEG
 Test Speed: HIGH
 Temperature:27.3DEG
 Operators:QC
 Test Date:2018-09-07

γ Range: 0 - 90DEG
 γ Interval: 0.5DEG
 Test System:EVERFINE GO-2000B_V1 SYSTEM V2.0.295
 Humidity:65.0%
 Test Distance:10.382m [K=1.0000]
 Remarks:



LUMINOUS DISTRIBUTION INTENSITY DATA

Test:U:120.0V I:0.1630A P:19.33W PF:0.9884 Lamp Flux:2005.11x1 lm		
NAME: ASD-LSR-2030-AP-W	TYPE:	WEIGHT:
SPEC.:	DIM.:	SERIAL No.:
MFR: ASD Lighting Corp	SUR.:	Shielding Angle:

Table--4

UNIT: cd

C (DEG) \ γ (DEG)	285	290	295	300	305	310	315	320	325	330	335	340	345	350	355				
0	948	948	948	948	948	948	948	948	948	948	948	948	948	948	948				
5	951	950	949	948	946	945	943	941	940	939	938	936	935	934	934				
10	955	952	948	945	942	937	933	930	926	922	918	915	912	909	907				
15	957	952	946	940	933	926	920	913	906	899	893	888	883	879	876				
20	933	929	925	921	917	911	905	895	886	877	868	860	852	845	840				
25	908	904	899	893	888	882	876	870	864	851	840	829	819	811	804				
30	884	879	874	868	861	853	844	836	827	819	809	795	784	774	767				
35	844	842	841	839	836	824	812	798	787	777	771	759	745	734	727				
40	801	798	794	791	787	780	773	759	743	730	721	714	703	690	680				
45	757	752	749	744	736	726	716	704	699	684	670	660	650	631	617				
50	702	699	695	692	688	674	656	641	630	624	606	587	574	554	518				
55	644	639	629	617	605	594	589	566	544	526	517	493	457	393	273				
60	586	577	558	538	506	481	468	463	438	397	365	314	213	143	104				
65	455	458	451	436	397	361	358	338	289	242	181	131	101	88.9	80.5				
70	310	314	313	304	281	259	261	206	153	134	101	91.4	83.7	77.0	70.1				
75	165	173	179	181	177	173	171	137	105	94.5	87.7	80.8	74.9	68.0	61.1				
80	10.4	18.6	28.9	40.7	54.0	68.5	85.5	100	92.1	84.0	77.1	70.7	63.4	55.6	47.8				
85	0.00	0.00	0.00	0.00	0.00	0.00	0.00	0.00	0.00	0.00	23.2	50.6	49.8	42.1	33.6				
90	0.00	0.00	0.00	0.00	0.00	0.00	0.00	0.00	0.00	0.00	0.00	0.00	0.00	0.00	0.00				

C Range: 0 - 360DEG
 C Interval: 5.0DEG
 Test Speed: HIGH
 Temperature:27.3DEG
 Operators:QC
 Test Date:2018-09-07

γ Range: 0 - 90DEG
 γ Interval: 0.5DEG
 Test System:EVERFINE GO-2000B_V1 SYSTEM V2.0.295
 Humidity:65.0%
 Test Distance:10.382m [K=1.0000]
 Remarks:



Photometric Data Table [cd]

G/C	0.0	5.0	10.0	15.0	20.0	25.0	30.0	35.0	40.0	45.0
0.0	947.9	947.9	947.9	947.9	947.9	947.9	947.9	947.9	947.9	947.9
2.5	942.0	940.6	939.2	938.0	936.9	935.9	934.9	934.1	933.3	932.4
5.0	933.0	930.3	927.7	925.3	923.1	921.1	919.4	917.9	916.6	915.4
7.5	921.3	917.5	914.0	910.8	908.0	905.6	903.7	902.1	900.2	898.2
10.0	905.6	901.0	897.0	893.4	890.4	887.8	885.4	883.4	881.6	880.2
12.5	889.5	884.3	879.8	875.9	872.2	868.7	866.0	864.6	863.3	862.2
15.0	873.2	867.2	862.0	857.4	853.6	850.7	848.4	847.2	845.2	843.9
17.5	855.0	848.5	843.0	838.5	835.1	832.5	830.3	828.7	827.6	827.6
20.0	835.6	828.6	822.9	818.4	815.0	812.6	810.7	810.2	810.0	810.0
22.5	817.6	809.9	803.6	798.5	794.5	791.9	790.9	791.0	791.1	781.2
25.0	799.2	790.9	784.2	779.0	774.9	772.4	771.0	770.9	753.5	742.3
27.5	780.0	771.2	764.1	758.8	755.2	752.7	751.8	727.0	706.4	696.4
30.0	761.3	751.7	744.1	738.5	735.1	732.9	709.8	671.9	650.1	641.4
32.5	741.2	731.4	724.0	718.7	714.6	711.0	648.3	605.2	581.2	576.4
35.0	721.4	710.5	702.2	696.5	693.5	648.5	574.6	525.5	500.4	498.2
37.5	699.5	687.1	678.2	671.8	671.1	574.6	490.4	433.1	406.6	408.2
40.0	673.6	655.4	645.6	639.9	639.0	493.0	397.0	330.8	300.2	310.4
42.5	643.2	603.5	581.4	582.5	527.6	411.1	300.3	221.3	195.4	231.2
45.0	608.9	534.4	485.0	472.9	416.2	324.6	210.0	110.9	136.1	166.0
47.5	571.4	455.9	368.1	329.1	296.3	228.9	124.8	79.03	94.28	114.5
50.0	488.5	356.2	245.5	199.1	191.1	143.4	69.01	66.57	67.77	77.22
52.5	339.5	241.9	144.7	110.1	116.3	82.24	60.91	57.58	53.61	52.29
55.0	189.4	146.8	96.38	79.34	75.62	59.79	54.77	50.09	44.68	37.75
57.5	105.9	91.92	75.87	70.11	62.97	54.94	49.59	44.39	37.69	32.66
60.0	88.82	79.41	70.54	63.81	57.35	50.15	44.67	39.47	32.65	27.45
62.5	80.19	72.21	65.39	58.33	51.99	45.43	39.11	33.82	27.48	22.11
65.0	73.82	66.35	59.49	53.41	46.42	39.91	33.48	28.03	22.06	16.70
67.5	68.60	61.08	54.27	47.69	40.86	34.39	27.74	21.77	16.23	11.18
70.0	63.23	56.11	49.34	41.99	35.37	28.19	21.57	15.62	10.71	8.708
72.5	58.78	51.65	44.31	36.25	28.96	21.77	15.35	10.67	8.350	6.561
75.0	53.89	45.44	37.72	30.05	21.70	15.01	10.44	7.881	5.861	4.324
77.5	46.88	38.47	30.53	22.12	13.95	9.552	7.149	4.951	3.255	2.005
80.0	40.02	31.82	23.01	13.18	7.810	5.741	3.692	1.886	0.5494	0.2563
82.5	32.89	23.51	12.92	6.149	4.104	1.902	0.2840	0.1749	0.0941	0.0350
85.0	24.37	13.22	4.535	2.772	0.7663	0.1014	0	0	0	0
87.5	13.62	3.266	1.043	0	0	0	0	0	0	0
90.0	2.896	0	0	0	0	0	0	0	0	0
G/C	50.0	55.0	60.0	65.0	70.0	75.0	80.0	85.0	90.0	95.0
0.0	947.9	947.9	947.9	947.9	947.9	947.9	947.9	947.9	947.9	947.9
2.5	931.6	930.9	930.3	929.9	929.7	929.7	929.8	930.0	930.4	930.7
5.0	914.5	913.8	913.4	913.3	912.8	912.2	912.1	912.4	913.0	913.8
7.5	896.9	896.4	896.0	895.3	895.3	895.6	894.9	894.9	895.5	897.1
10.0	879.7	879.0	877.5	878.3	878.1	878.1	878.3	877.6	878.1	880.5
12.5	861.3	860.4	860.9	859.9	861.1	861.0	861.5	860.6	860.6	863.7
15.0	843.6	843.0	842.6	843.3	842.4	845.1	844.4	843.8	843.1	845.7
17.5	826.0	826.3	824.3	820.8	819.6	818.1	816.9	816.1	814.8	816.1
20.0	806.2	799.7	795.7	792.5	790.5	789.1	789.1	788.1	786.4	786.2
22.5	773.6	768.5	764.6	763.3	761.8	761.5	761.3	760.1	758.0	756.6
25.0	736.7	734.2	733.0	732.5	733.0	733.1	733.0	731.9	729.6	727.2
27.5	693.6	695.1	697.6	700.2	703.5	704.3	704.9	703.6	701.2	697.7
30.0	643.1	650.8	659.6	666.4	672.2	675.5	677.3	675.3	672.8	667.9
32.5	583.9	599.3	616.7	630.0	612.9	596.6	582.4	571.1	565.6	564.2
35.0	515.2	540.8	540.9	527.9	508.7	491.3	475.6	464.0	458.5	457.8
37.5	432.0	442.7	439.5	426.0	405.6	386.3	369.0	356.9	351.4	351.5
40.0	336.8	348.1	342.6	326.4	303.5	281.3	262.6	249.8	244.2	245.2
42.5	253.8	260.6	250.6	229.7	202.9	177.2	156.5	142.7	137.1	139.2
45.0	181.6	181.3	164.5	136.1	103.8	73.84	50.54	35.60	29.90	33.45
47.5	122.6	111.9	84.61	46.33	32.85	30.44	28.45	26.85	25.67	24.81
50.0	74.92	52.41	35.23	31.53	28.51	26.11	24.16	22.59	21.43	20.62
52.5	38.88	34.42	30.61	27.06	24.11	21.75	19.86	18.32	17.20	16.44
55.0	33.40	29.48	25.84	22.47	19.65	17.37	15.53	14.05	12.96	12.27
57.5	28.28	24.43	20.93	17.78	15.12	12.97	11.19	9.767	8.726	8.099
60.0	23.10	19.28	15.92	12.98	10.53	8.529	6.836	5.479	4.491	3.937
62.5	17.81	14.07	10.81	8.274	7.246	6.296	5.376	4.534	3.800	3.215
65.0	12.45	9.248	7.958	6.912	6.012	5.194	4.415	3.712	3.108	2.633
67.5	8.995	7.594	6.438	5.516	4.746	4.068	3.437	2.883	2.416	2.057
70.0	7.125	5.875	4.874	4.085	3.454	2.920	2.445	2.047	1.725	1.485
72.5	5.178	4.104	3.271	2.628	2.141	1.754	1.443	1.206	1.033	0.9178
75.0	3.164	2.288	1.632	1.149	0.8078	0.5737	0.4301	0.3600	0.3415	0.3538
77.5	1.093	0.4314	0.2977	0.2558	0.2237	0.1999	0.1835	0.1739	0.1708	0.1739
80.0	0.1981	0.1455	0.1030	0.0690	0.0429	0.0236	0.0103	0.0026	0	0.0026
82.5	0	0	0	0	0	0	0	0	0	0
85.0	0	0	0	0	0	0	0	0	0	0

C Range: 0 - 360DEG
 C Interval: 5.0DEG
 Test Speed: HIGH
 Temperature: 27.3DEG
 Operators: QC
 Test Date: 2018-09-07

γ Range: 0 - 90DEG
 γ Interval: 0.5DEG
 Test System: EVERFINE GO-2000B_V1 SYSTEM V2.0.295
 Humidity: 65.0%
 Test Distance: 10.382m [K=1.0000]
 Remarks:



Photometric Data Table [cd]

87.5	0	0	0	0	0	0	0	0	0	0
90.0	0	0	0	0	0	0	0	0	0	0
G/C	100.0	105.0	110.0	115.0	120.0	125.0	130.0	135.0	140.0	145.0
0.0	947.9	947.9	947.9	947.9	947.9	947.9	947.9	947.9	947.9	947.9
2.5	931.2	931.7	932.4	933.3	934.4	935.6	936.9	938.4	939.9	941.3
5.0	914.9	916.0	917.3	918.6	919.6	920.9	922.7	924.8	927.3	929.7
7.5	898.2	898.9	900.1	901.5	903.3	905.5	907.8	910.2	912.7	915.4
10.0	880.4	881.3	882.6	884.2	886.5	888.4	890.2	892.1	895.3	899.0
12.5	862.0	863.8	864.5	866.7	868.0	868.9	871.8	876.0	879.6	883.5
15.0	844.6	844.8	847.1	847.7	848.3	851.9	855.0	857.9	861.3	865.2
17.5	816.8	817.3	820.3	822.2	829.7	833.4	835.9	838.2	842.0	845.9
20.0	786.1	786.8	786.4	789.8	794.6	801.2	811.0	818.9	822.8	824.2
22.5	755.0	754.1	752.4	754.1	756.3	761.2	770.8	783.6	800.2	806.0
25.0	723.9	720.2	717.1	714.6	713.6	717.0	724.1	736.8	758.2	785.9
27.5	692.5	685.4	678.9	672.3	667.8	667.8	671.3	682.9	701.6	733.3
30.0	660.5	650.1	638.5	626.8	617.8	611.9	610.8	616.4	634.7	667.7
32.5	565.7	570.0	573.8	577.8	563.3	550.1	539.3	538.9	554.6	592.6
35.0	460.3	466.1	472.8	479.7	484.6	476.6	455.8	448.2	464.2	506.0
37.5	355.7	363.8	373.9	383.9	390.5	383.6	362.8	347.3	363.4	411.4
40.0	251.8	263.0	276.7	291.6	299.7	295.4	276.5	247.9	256.1	309.1
42.5	148.5	163.5	182.1	202.0	215.2	215.9	202.6	181.0	155.8	197.7
45.0	45.72	65.30	89.90	116.1	136.7	145.3	140.9	128.0	106.2	84.78
47.5	24.34	24.20	24.38	34.32	65.21	84.96	90.94	86.28	69.50	51.78
50.0	20.20	20.11	20.35	20.87	21.74	34.09	51.63	54.26	45.01	39.84
52.5	16.08	16.04	16.34	16.93	17.86	19.13	21.07	31.98	30.84	32.54
55.0	11.96	11.99	12.35	13.01	13.99	15.31	16.88	18.76	23.14	26.44
57.5	7.860	7.959	8.384	9.116	10.15	11.48	13.10	15.09	17.51	21.50
60.0	3.767	3.943	4.442	5.241	6.309	7.677	9.354	11.47	13.97	17.33
62.5	2.727	2.304	1.927	1.554	2.478	3.891	5.645	7.874	10.47	14.00
65.0	2.240	1.902	1.602	1.298	0.9286	0.5731	1.982	4.294	6.968	10.21
67.5	1.763	1.514	1.288	1.060	0.7699	0.4715	0.3143	0.7169	3.425	6.366
70.0	1.295	1.137	0.9900	0.8368	0.6330	0.4111	0.3120	0.3067	0.3002	2.700
72.5	0.8346	0.7696	0.7061	0.6309	0.5135	0.3721	0.3206	0.3158	0.3098	0.3153
75.0	0.3808	0.4109	0.4339	0.4396	0.4110	0.3508	0.3293	0.3251	0.3198	0.3225
77.5	0.1835	0.1999	0.2237	0.2558	0.2977	0.3417	0.3383	0.3347	0.3308	0.3299
80.0	0.0103	0.0236	0.0429	0.0690	0.1030	0.1467	0.2023	0.2733	0.3407	0.3375
82.5	0	0	0	0	0	0	0	0.0374	0.1076	0.1999
85.0	0	0	0	0	0	0	0	0	0	0
87.5	0	0	0	0	0	0	0	0	0	0
90.0	0	0	0	0	0	0	0	0	0	0
G/C	150.0	155.0	160.0	165.0	170.0	175.0	180.0	185.0	190.0	195.0
0.0	947.9	947.9	947.9	947.9	947.9	947.9	947.9	947.9	947.9	947.9
2.5	942.4	943.6	944.9	946.3	947.7	949.2	950.8	951.0	951.3	951.6
5.0	932.1	934.6	937.3	940.1	943.0	946.0	949.1	949.6	950.1	950.7
7.5	918.2	921.5	929.0	933.1	937.5	942.2	943.1	944.2	944.2	945.4
10.0	903.4	908.0	912.7	917.9	923.4	929.3	935.4	936.5	937.7	939.2
12.5	887.9	892.9	898.4	904.5	910.6	917.4	924.7	926.2	928.4	931.0
15.0	869.7	874.5	880.1	886.5	893.4	901.1	909.4	911.4	914.0	917.2
17.5	850.7	854.5	859.9	866.3	874.1	882.8	892.3	894.8	898.0	902.1
20.0	828.8	835.3	840.9	847.7	855.7	864.8	874.8	878.1	882.4	887.5
22.5	810.4	815.0	820.1	827.6	836.0	845.7	856.8	861.1	866.6	873.1
25.0	788.9	793.8	800.0	808.6	817.8	828.5	840.8	846.1	852.8	860.3
27.5	767.2	772.5	779.4	787.5	797.2	808.4	821.4	827.7	835.8	845.2
30.0	719.4	752.2	758.4	767.2	777.1	789.2	803.4	810.4	819.3	829.6
32.5	651.1	728.2	736.5	745.5	755.1	768.1	783.8	791.2	800.9	812.7
35.0	572.5	660.7	711.5	717.2	726.5	742.1	762.7	770.6	781.0	794.2
37.5	485.7	578.3	671.5	670.9	683.4	708.9	742.1	749.8	760.5	774.2
40.0	386.9	478.2	574.6	606.0	626.3	666.6	718.9	726.9	738.4	753.6
42.5	279.1	373.1	462.3	514.7	545.3	609.2	694.0	702.8	715.3	731.0
45.0	177.3	273.0	340.7	378.3	430.6	521.6	637.8	659.6	685.4	708.7
47.5	91.42	177.2	220.5	233.0	303.2	411.1	538.5	590.1	645.9	682.2
50.0	41.16	99.55	128.6	131.7	182.3	273.3	377.9	464.2	571.1	640.4
52.5	34.81	50.39	73.31	67.42	93.44	154.0	213.4	303.0	436.8	539.1
55.0	29.86	33.74	43.90	47.81	57.98	81.48	99.74	162.9	275.3	373.7
57.5	25.68	29.39	34.68	40.07	45.27	54.17	63.31	84.77	139.3	210.8
60.0	21.27	25.01	29.66	35.10	40.48	46.55	53.23	62.30	76.23	104.3
62.5	16.71	20.56	25.50	30.70	35.83	41.65	47.81	54.32	62.54	73.54
65.0	12.70	16.15	20.97	26.02	31.45	37.25	43.66	49.91	56.44	64.10
67.5	9.026	11.73	16.08	21.05	26.56	32.77	38.96	45.40	52.06	59.14
70.0	5.553	8.236	11.23	16.11	21.69	27.84	34.18	41.29	47.84	54.65
72.5	2.180	4.955	7.304	11.11	16.85	22.98	29.26	36.38	43.17	50.14
75.0	0.3297	1.861	4.276	5.954	11.69	18.03	24.58	31.15	37.86	45.35
77.5	0.3317	0.3333	1.600	2.884	6.493	12.44	19.34	26.30	33.11	39.97

C Range: 0 - 360DEG
 C Interval: 5.0DEG
 Test Speed: HIGH
 Temperature: 27.3DEG
 Operators: QC
 Test Date: 2018-09-07

γ Range: 0 - 90DEG
 γ Interval: 0.5DEG
 Test System: EVERFINE GO-2000B_V1 SYSTEM V2.0.295
 Humidity: 65.0%
 Test Distance: 10.382m [K=1.0000]
 Remarks:



Photometric Data Table [cd]

80.0	0.3323	0.3309	0.3273	1.104	1.732	6.538	13.64	20.67	28.32	35.01
82.5	0.3178	0.3284	0.3224	0.3030	0.5340	2.363	7.365	14.74	22.08	29.42
85.0	0	0.1110	0.2810	0.2985	0.2850	0.2155	2.964	8.510	15.94	23.55
87.5	0	0	0	0	0.2242	0.2704	0.2454	3.935	8.083	0
90.0	0	0	0	0	0	0	0.1636	0	0	0
G/C	200.0	205.0	210.0	215.0	220.0	225.0	230.0	235.0	240.0	245.0
0.0	947.9	947.9	947.9	947.9	947.9	947.9	947.9	947.9	947.9	947.9
2.5	952.0	952.3	952.7	953.1	953.1	952.8	952.5	952.1	951.8	951.3
5.0	951.3	952.0	952.8	953.6	954.0	954.2	954.4	954.7	955.4	956.0
7.5	946.8	948.3	949.8	951.4	952.7	953.7	954.8	956.3	957.3	957.7
10.0	940.9	942.9	944.9	947.2	949.6	952.1	954.6	956.4	957.2	959.4
12.5	933.6	936.4	939.4	942.4	945.7	949.3	952.5	955.7	958.8	959.7
15.0	921.1	925.4	930.2	935.5	940.7	945.2	949.5	954.3	958.2	961.8
17.5	907.5	913.4	919.6	925.8	932.4	939.3	946.4	951.1	955.7	955.6
20.0	893.8	901.0	907.4	915.6	924.1	932.1	936.8	938.6	938.6	940.1
22.5	880.5	888.4	897.0	906.2	914.2	917.3	919.0	920.9	923.4	923.8
25.0	867.8	876.8	886.8	896.6	898.2	899.2	901.9	904.2	906.1	908.2
27.5	855.8	866.5	876.6	879.8	880.9	883.1	885.1	888.1	890.9	893.0
30.0	840.7	854.7	862.6	862.2	864.3	866.9	870.0	872.6	875.4	877.1
32.5	826.2	840.7	842.1	846.2	847.7	851.4	854.9	858.7	860.8	863.4
35.0	809.6	818.9	821.8	825.7	832.2	835.0	840.5	844.0	843.8	843.7
37.5	791.9	795.4	800.3	806.1	812.5	820.5	822.7	823.4	823.9	823.8
40.0	766.5	770.4	777.1	785.3	793.9	799.5	800.5	801.5	802.9	804.7
42.5	739.6	744.1	752.4	763.0	772.5	774.5	777.6	778.1	781.8	785.0
45.0	712.1	717.1	726.5	739.4	743.9	748.5	752.4	755.5	760.0	764.7
47.5	684.6	691.3	700.2	708.3	714.6	721.5	727.7	733.1	737.8	744.1
50.0	656.9	665.3	673.3	675.8	684.3	694.0	702.3	709.1	712.2	715.7
52.5	604.1	637.9	639.5	643.6	654.1	665.9	677.2	679.2	681.3	685.9
55.0	487.4	577.4	588.6	610.0	622.9	634.4	637.3	644.5	650.1	656.3
57.5	332.6	440.7	506.1	569.1	586.9	576.9	593.2	608.3	618.3	626.8
60.0	189.1	282.6	384.7	497.6	501.6	508.2	542.6	571.4	585.0	596.9
62.5	99.08	159.4	245.8	365.4	403.2	426.5	484.8	532.5	551.3	564.6
65.0	74.71	98.03	141.5	249.7	294.9	334.3	420.2	485.4	488.0	484.7
67.5	66.48	75.46	94.60	162.5	185.0	234.3	345.3	402.1	407.3	404.6
70.0	62.12	68.71	79.56	104.2	101.5	177.3	272.2	321.2	326.9	324.5
72.5	57.74	63.57	71.83	78.44	90.61	137.8	207.4	243.9	246.9	244.4
75.0	52.11	58.90	66.17	72.92	82.20	108.6	151.3	169.8	167.3	164.4
77.5	46.92	53.85	60.87	67.84	75.43	88.35	102.7	98.88	92.20	90.60
80.0	41.74	48.89	56.05	63.10	69.81	62.04	51.17	40.79	31.68	24.26
82.5	36.37	44.20	49.20	35.36	21.62	8.406	0	0	0	0
85.0	27.60	14.16	0	0	0	0	0	0	0	0
87.5	0	0	0	0	0	0	0	0	0	0
90.0	0	0	0	0	0	0	0	0	0	0
G/C	250.0	255.0	260.0	265.0	270.0	275.0	280.0	285.0	290.0	295.0
0.0	947.9	947.9	947.9	947.9	947.9	947.9	947.9	947.9	947.9	947.9
2.5	951.2	951.2	951.1	951.0	950.9	950.4	949.8	949.3	948.7	948.2
5.0	955.6	954.8	954.2	954.1	953.9	953.0	952.0	951.1	950.3	949.2
7.5	958.2	958.5	957.6	957.1	956.9	955.6	954.3	953.1	951.3	949.1
10.0	960.5	961.0	960.8	960.1	959.9	958.3	956.8	954.7	951.7	948.2
12.5	961.9	963.7	963.6	963.0	962.9	961.2	959.1	956.3	951.8	947.9
15.0	962.2	965.4	966.5	965.9	966.0	964.0	961.7	957.0	952.5	945.8
17.5	955.5	953.6	954.6	952.6	952.4	950.9	949.8	946.3	943.0	938.7
20.0	940.6	938.9	940.1	938.9	938.8	937.7	935.8	933.3	928.8	925.4
22.5	925.5	925.6	925.8	925.1	925.2	924.5	922.3	920.3	916.1	911.4
25.0	910.1	911.3	911.3	911.2	911.6	911.4	909.5	907.8	903.6	898.7
27.5	894.0	896.5	896.8	897.3	898.0	898.4	897.2	895.6	891.1	886.5
30.0	879.3	881.7	882.3	883.3	884.4	885.4	885.3	883.9	879.3	874.4
32.5	863.1	864.2	864.0	864.0	864.6	865.3	866.1	865.8	864.3	864.2
35.0	843.6	844.1	844.8	844.6	844.7	844.8	845.5	844.0	842.2	840.7
37.5	823.8	824.2	825.8	825.3	824.9	824.3	824.5	822.3	820.2	817.3
40.0	805.5	805.5	806.7	806.1	805.1	803.7	803.2	800.7	797.8	794.4
42.5	786.6	786.9	787.8	786.9	785.2	783.2	782.1	779.1	775.0	771.7
45.0	767.4	768.3	769.1	767.7	765.4	762.6	761.0	757.0	752.4	749.3
47.5	745.3	744.2	742.8	739.5	737.0	734.5	733.8	730.3	728.3	727.1
50.0	716.9	716.1	714.9	710.9	708.6	706.2	705.3	702.0	699.0	695.4
52.5	688.8	688.1	687.0	682.4	680.2	677.8	676.8	673.4	669.1	662.7
55.0	660.1	660.3	658.7	653.9	651.8	649.5	648.0	644.2	638.9	628.8
57.5	631.0	632.4	630.5	625.3	623.4	621.2	619.2	614.8	607.9	593.9
60.0	602.4	604.3	602.5	596.8	595.1	592.9	590.5	585.7	576.7	558.5
62.5	555.7	547.1	537.9	526.8	522.6	521.6	523.7	527.8	529.5	520.8
65.0	479.4	474.4	466.7	455.2	450.1	448.6	450.3	455.0	457.5	450.5
67.5	401.8	401.3	395.4	383.6	377.6	375.5	376.9	382.2	385.5	381.4
70.0	324.0	327.8	324.1	312.0	305.1	302.4	303.6	309.6	314.2	313.3

C Range: 0 - 360DEG
 C Interval: 5.0DEG
 Test Speed: HIGH
 Temperature: 27.3DEG
 Operators: QC
 Test Date: 2018-09-07

γ Range: 0 - 90DEG
 γ Interval: 0.5DEG
 Test System: EVERFINE GO-2000B_V1 SYSTEM V2.0.295
 Humidity: 65.0%
 Test Distance: 10.382m [K=1.0000]
 Remarks:



Photometric Data Table [cd]

72.5	246.1	254.0	252.8	240.4	232.6	229.3	230.2	237.1	243.4	246.0
75.0	168.3	180.0	181.3	168.9	160.1	156.2	156.9	164.6	173.0	179.5
77.5	92.13	96.59	94.09	85.25	80.04	78.71	80.82	88.07	97.35	107.6
80.0	17.56	11.36	5.291	1.254	0	1.156	4.544	10.39	18.64	28.95
82.5	0	0	0	0	0	0	0	0	0	0
85.0	0	0	0	0	0	0	0	0	0	0
87.5	0	0	0	0	0	0	0	0	0	0
90.0	0	0	0	0	0	0	0	0	0	0
G/C	300.0	305.0	310.0	315.0	320.0	325.0	330.0	335.0	340.0	345.0
0.0	947.9	947.9	947.9	947.9	947.9	947.9	947.9	947.9	947.9	947.9
2.5	947.8	947.3	946.9	946.5	946.0	945.5	944.8	944.2	943.7	943.2
5.0	947.8	946.3	944.7	943.0	941.5	940.0	938.7	937.5	936.4	935.4
7.5	946.3	943.9	941.7	939.4	937.0	934.6	931.9	929.4	927.2	925.3
10.0	945.3	941.6	937.4	933.0	929.6	925.9	922.0	918.4	915.1	912.0
12.5	942.6	936.9	932.6	926.7	921.2	915.9	910.6	905.9	901.7	898.0
15.0	939.5	933.3	926.3	919.6	912.6	905.9	899.2	893.4	888.0	883.3
17.5	935.3	929.1	921.0	912.0	903.5	895.8	888.1	881.2	874.5	868.4
20.0	920.9	916.7	911.4	904.9	894.9	885.8	876.6	867.7	859.7	852.1
22.5	907.3	901.4	896.5	891.3	886.6	875.2	864.1	853.4	844.3	835.8
25.0	893.2	887.8	881.6	875.9	870.0	863.7	851.4	839.7	829.0	819.3
27.5	880.9	873.9	867.5	860.3	852.7	845.9	838.4	825.0	812.1	801.5
30.0	868.3	861.3	853.2	844.2	835.7	827.0	819.4	809.4	795.5	784.0
32.5	856.4	848.0	838.1	828.5	817.6	806.8	798.9	792.8	778.4	766.3
35.0	838.9	835.9	824.4	811.7	798.3	786.9	777.2	770.5	759.2	744.5
37.5	814.9	811.3	808.2	794.5	779.2	765.5	754.5	744.8	738.6	724.5
40.0	791.4	786.6	780.5	772.8	758.7	742.6	730.1	721.2	714.4	703.0
42.5	767.2	762.0	753.8	744.6	733.6	720.5	707.3	696.6	689.5	679.8
45.0	743.7	735.6	726.4	715.6	704.5	698.5	683.7	670.1	659.9	650.4
47.5	720.1	710.8	700.3	685.5	673.5	666.8	657.6	640.0	625.2	615.1
50.0	692.4	687.8	673.7	656.3	640.5	629.5	624.1	606.4	586.7	574.5
52.5	655.4	649.2	646.0	624.9	604.9	588.5	579.1	568.5	543.3	527.2
55.0	617.1	605.4	594.5	566.2	544.5	525.9	517.0	517.0	493.4	457.1
57.5	578.3	557.2	538.8	527.7	521.8	495.4	463.9	448.9	420.1	336.6
60.0	538.2	506.0	481.0	467.8	462.8	437.6	397.2	364.8	313.7	213.0
62.5	495.5	452.7	421.4	411.2	402.5	362.7	320.3	271.6	201.0	131.1
65.0	435.9	397.1	360.7	358.5	338.1	289.2	241.7	181.2	130.6	101.4
67.5	368.8	337.4	305.7	308.6	270.6	217.9	179.9	119.4	101.1	90.67
70.0	304.2	281.0	258.6	260.6	206.5	153.2	134.0	101.4	91.35	83.74
72.5	241.3	227.8	215.1	214.4	166.4	113.9	106.0	93.44	85.66	78.85
75.0	180.9	177.2	173.0	171.4	136.8	105.5	94.52	87.70	80.83	74.90
77.5	118.1	128.5	131.2	132.3	115.4	98.33	89.01	82.83	76.39	69.79
80.0	40.70	53.98	68.50	85.46	100.2	92.10	83.95	77.11	70.75	63.35
82.5	0	0	0	11.61	30.99	52.03	75.44	71.40	64.02	56.74
85.0	0	0	0	0	0	0	0	23.20	50.59	49.77
87.5	0	0	0	0	0	0	0	0	0	0
90.0	0	0	0	0	0	0	0	0	0	0
G/C	350.0	355.0								
0.0	947.9	947.9								
2.5	942.7	942.3								
5.0	934.5	933.7								
7.5	923.7	922.4								
10.0	909.4	907.2								
12.5	894.5	891.7								
15.0	879.2	875.9								
17.5	863.0	858.5								
20.0	845.4	839.8								
22.5	828.5	822.4								
25.0	811.2	804.5								
27.5	792.9	785.5								
30.0	774.4	766.9								
32.5	755.8	747.1								
35.0	734.1	726.5								
37.5	713.0	704.8								
40.0	690.0	679.7								
42.5	663.1	650.5								
45.0	631.0	616.9								
47.5	596.5	580.8								
50.0	553.8	518.0								
52.5	494.0	411.2								
55.0	392.6	273.1								
57.5	255.8	157.7								
60.0	142.8	104.1								
62.5	100.3	88.40								

C Range: 0 - 360DEG
 C Interval: 5.0DEG
 Test Speed: HIGH
 Temperature: 27.3DEG
 Operators: QC
 Test Date: 2018-09-07

γ Range: 0 - 90DEG
 γ Interval: 0.5DEG
 Test System: EVERFINE GO-2000B_V1 SYSTEM V2.0.295
 Humidity: 65.0%
 Test Distance: 10.382m [K=1.0000]
 Remarks:



Photometric Data Table [cd]

65.0	88.85	80.52
67.5	82.01	75.13
70.0	76.98	70.11
72.5	72.29	65.42
75.0	68.01	61.08
77.5	62.45	54.53
80.0	55.57	47.79
82.5	48.82	41.00
85.0	42.10	33.63
87.5	28.84	25.24
90.0	0	0

C Range: 0 - 360DEG
C Interval: 5.0DEG
Test Speed: HIGH
Temperature:27.3DEG
Operators:QC
Test Date:2018-09-07

γ Range: 0 - 90DEG
 γ Interval: 0.5DEG
Test System:EVERFINE GO-2000B_V1 SYSTEM V2.0.295
Humidity:65.0%
Test Distance:10.382m [K=1.0000]
Remarks: