



LED COMMERCIAL DOWNLIGHT

► **DESIGN & OPTIONS** - LED COMMERCIAL DOWNLIGHTS have a classic, low-profile design with a smooth trim. They are designed to operate on 120-277V circuits. The 100° beam angle grants you smooth and even lighting as well. You can choose either a 3000K, 4000K or 5000K color temperature. Models with a 0-10V dimmable driver, color and power adjustable options are available, you can choose either 3000K, 4000K or 5000K and to change the power depending on your needs with a simple switch.

► **INSTALLATION** - With everything you need included in one set, installation has never been easier. The wiring and spring-loaded clips ensure a snug fit to the surface and the safety cable eliminates the possibility of an incident during installation. Refer to install instructions for detailed steps.

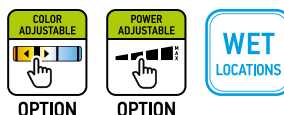
► **APPLICATION** - Install LED COMMERCIAL DOWNLIGHT to your ceiling for bright light in your hallway, corridor, or any other commercial space with a high ceiling. It is suitable for Wet locations, making it perfect for spaces with humidity requirements.

► **ENERGY SAVING & EFFICIENCY** - Replacing an incandescent fixture with LED COMMERCIAL DOWNLIGHT can save you 8 times as much on your current energy costs. With a lifespan of 50,000 hours, these fixtures are made to last decades under normal operation! This fixture will save you a significant amount of money in its lifetime.

► **CERTIFICATION & WARRANTY** - Buy with confidence: ASD provides a 5-year warranty along with ETL and ENERGY STAR certifications to guarantee top quality products and safety!

Top US certifications allow participation in rebates; please check the rebate programs available in your state.

| | |
|----------------|--|
| Catalog number | |
| Notes | |
| Type | |



PRODUCT LEGEND:

| Family | Modification | Size | Dimmable | Watts | CCT |
|--------------------------|--------------|------------|----------------------|-----------------|--------------------------|
| ASD-CDL | X | X | X | XX | XX |
| LED Commercial Downlight | 1 | 6 = 6 inch | N = Non-dimmable | 20 = 20 W | 30 = 3,000 K |
| | 2 | 8 = 8 inch | A = Power Adjustable | 30 = 30 W | 40 = 4,000 K |
| | 5 | | D = Dimmable | 22 = 10/15/22 W | 50 = 5,000 K |
| | | | | 30 = 12/20/30 W | CC = 3,000/4,000/5,000 K |
| | | | | | AC = 3,000/4,000/5,000 K |

LED COMMERCIAL DOWNLIGHT:

| Model | Size | Watts | Voltage | Dimmable | CCT | Lumens | Dimensions (DxH) | Cord |
|------------------|------|------------|-----------|----------|---------------------|--------------------|------------------|--------|
| ASD-CDL1-6N2030 | 6" | 20 W | 120-277 V | no | 3,000 K | 1,700 lm | 8 1/4" x 3 7/8" | 1.6 ft |
| ASD-CDL1-6N2040 | 6" | 20 W | 120-277 V | no | 4,000 K | 1,850 lm | 8 1/4" x 3 7/8" | 1.6 ft |
| ASD-CDL1-6N2050 | 6" | 20 W | 120-277 V | no | 5,000 K | 1,850 lm | 8 1/4" x 3 7/8" | 1.6 ft |
| ASD-CDL1-8N3030 | 8" | 30 W | 120-277 V | no | 3,000 K | 2,450 lm | 10 1/4" x 4 1/2" | 1.6 ft |
| ASD-CDL1-8N3040 | 8" | 30 W | 120-277 V | no | 4,000 K | 2,700 lm | 10 1/4" x 4 1/2" | 1.6 ft |
| ASD-CDL1-8N3050 | 8" | 30 W | 120-277 V | no | 5,000 K | 2,700 lm | 10 1/4" x 4 1/2" | 1.6 ft |
| ASD-CDL2-6A22CC | 6" | 10/15/22 W | 120-277 V | no | 3,000/4,000/5,000 K | 850/1,250/1,750 lm | 8 1/4" x 3 7/8" | 1.6 ft |
| ASD-CDL2-8A30CC | 8" | 12/20/30 W | 120-277 V | no | 3,000/4,000/5,000 K | 900/1,500/2,100 lm | 10 1/4" x 4 1/2" | 1.6 ft |
| ASD-CDL5-6AD22AC | 6" | 10/15/22 W | 120-277 V | 0-10V | 3,000/4,000/5,000 K | 900/1,350/2,000 lm | 8 1/4" x 3 7/8" | 2 ft |
| ASD-CDL5-8AD30AC | 8" | 12/20/30 W | 120-277 V | 0-10V | 3,000/4,000/5,000 K | 920/1,500/2,500 lm | 10 1/4" x 4 1/2" | 2 ft |

ORDERING INFORMATION:

| Model | UPC | Pcs in middle box | Middle box Size | Middle box Weight | GTIN 14 for Middle box | Pcs. per Carton | Carton Size | Carton Weight | GTIN 14 for Carton |
|------------------|--------------|-------------------|---------------------|-------------------|------------------------|-----------------|-----------------------|---------------|--------------------|
| ASD-CDL1-6N2030 | 819201025497 | 4 | 17.5" x 9.3" x 9.1" | 6.2 lb | 10819201025494 | 8 | 19.3" x 18.1" x 9.8" | 13.2 lb | 20819201025491 |
| ASD-CDL1-6N2040 | 819201022762 | 4 | 17.5" x 9.3" x 9.1" | 6.2 lb | 20819201022766 | 8 | 19.3" x 18.1" x 9.8" | 13.2 lb | 30819201022763 |
| ASD-CDL1-6N2050 | 819201028528 | 4 | 17.5" x 9.3" x 9.1" | 7.5 lb | 10819201028525 | 8 | 19.3" x 18.1" x 9.8" | 16.1 lb | 20819201028522 |
| ASD-CDL1-8N3030 | 819201025527 | - | - | - | - | 4 | 21.7" x 9.8" x 11.2" | 7.9 lb | 10819201025524 |
| ASD-CDL1-8N3040 | 819201022779 | - | - | - | - | 4 | 21.7" x 9.8" x 11.2" | 7.9 lb | 20819201022773 |
| ASD-CDL1-8N3050 | 819201028535 | - | - | - | - | 4 | 21.7" x 9.8" x 11.2" | 8.8 lb | 10819201028532 |
| ASD-CDL2-6A22CC | 819201025558 | 4 | 17.5" x 9.3" x 9.1" | 6.2 lb | 10819201025555 | 8 | 19.3" x 18.1" x 9.8" | 15 lb | 20819201025552 |
| ASD-CDL2-8A30CC | 819201025565 | - | 17.5" x 9.3" x 9.1" | 6.2 lb | - | 4 | 21.7" x 9.8" x 11.2" | 8.8 lb | 10819201025562 |
| ASD-CDL5-6AD22AC | 810050731584 | 4 | 17.7" x 9.6" x 9.8" | 7.5 lb | 10810050731581 | 8 | 20.1" x 18.3" x 10.6" | 16.1 lb | 20810050731588 |
| ASD-CDL5-8AD30AC | 810050731591 | - | - | - | - | 4 | 18.9" x 11.4" x 11.6" | 9.5 lb | 10810050731598 |

For most up-to-date spec sheets please refer to asd-lighting.com

ASD LIGHTING CORP

E-mail: orders@asd-lighting.com | Web site: www.asd-lighting.com





LED COMMERCIAL DOWNLIGHT

PRODUCT SPECIFICATIONS:

| Construction & Materials | | | | | | | | | |
|--------------------------------------|---|-----------------------|-----------------|-----------------|-----------------|--------------------|------------------|--------------------|--|
| Housing | Aluminum | | | | | | | | |
| Lens | Frosted | | | | | | | | |
| Finish Color | White | | | | | | | | |
| Weight | ASD-CDL1-6N2030 | 1.3 lb (0.6 kg) | ASD-CDL1-8N3030 | 1.7 lb (0.8 kg) | ASD-CDL2-6A22CC | 1.5 lb (0.7 kg) | ASD-CDL5-6AD22AC | 1.5 lb (0.7 kg) | |
| | ASD-CDL1-6N2040 | | ASD-CDL1-8N3040 | | ASD-CDL2-8A30CC | 1.9 lb (0.9 kg) | ASD-CDL5-8AD30AC | 1.9 lb (0.9 kg) | |
| | ASD-CDL1-6N2050 | 1.5 lb (0.7 kg) | ASD-CDL1-8N3050 | | | | | | |
| Environmental System | | | | | | | | | |
| Work Environment | Suitable for Wet Locations, IP54, for CDL5 IP65 | | | | | | | | |
| Operating Temperature | -13°F to 113°F (-25°C to 45°C), for CDL5 4°F to 104°F (-20°C to 40°C) | | | | | | | | |
| L-70 Life | > 50,000 hrs | | | | | | | | |
| Optical System | | | | | | | | | |
| Luminous Flux | ASD-CDL1-6N2030 | 1,700 lm | ASD-CDL1-8N3030 | 2,450 lm | ASD-CDL2-6A22CC | 850/1,250/1,750 lm | ASD-CDL5-6AD22AC | 900/1,350/2,000 lm | |
| | ASD-CDL1-6N2040 | 1,850 lm | ASD-CDL1-8N3040 | 2,700 lm | ASD-CDL2-8A30CC | 900/1,500/2,100 lm | ASD-CDL5-8AD30AC | 920/1,500/2,500 lm | |
| | ASD-CDL1-6N2050 | 1,850 lm | ASD-CDL1-8N3050 | 2,700 lm | | | | | |
| Color Temperature | 3,000 K; 4,000 K; 5,000 K; 3,000/4,000/5,000 K | | | | | | | | |
| CRI | > 90 | | | | | | | | |
| Electrical System | | | | | | | | | |
| Input Voltage | 120-277 VAC 50/60 Hz | | | | | | | | |
| Max input current | ASD-CDL1-6N2030 | 0.4 A | ASD-CDL1-8N3030 | 0.6 A | ASD-CDL2-6A22CC | 0.7 A | ASD-CDL5-6AD22AC | 0.23 A | |
| | ASD-CDL1-6N2040 | | ASD-CDL1-8N3040 | | ASD-CDL2-8A30CC | 0.95 A | ASD-CDL5-8AD30AC | 0.3 A | |
| | ASD-CDL1-6N2050 | | ASD-CDL1-8N3050 | | | | | | |
| Inrush current (Action time) | ASD-CDL1-6N2030 | 1.2 A (0.3 S) | ASD-CDL1-8N3030 | 1.8 A (0.3 S) | ASD-CDL2-6A22CC | 2.1 A (0.3 S) | ASD-CDL5-6AD22AC | 43 A (0.3 S) | |
| | ASD-CDL1-6N2040 | | ASD-CDL1-8N3040 | | ASD-CDL2-8A30CC | 3.1 A (0.3 S) | ASD-CDL5-8AD30AC | 37 A (0.3 S) | |
| | ASD-CDL1-6N2050 | | ASD-CDL1-8N3050 | | | | | | |
| AC input range | min 99 V max 304 V, for CDL5 min 100 V max 305 V | | | | | | | | |
| Off State Power | 0 W | | | | | | | | |
| Power Consumption | ASD-CDL1-6N2030 | 20 W | ASD-CDL1-8N3030 | 30 W | ASD-CDL2-6A22CC | 10/15/22 W | ASD-CDL5-6AD22AC | 10/15/22 W | |
| | ASD-CDL1-6N2040 | | ASD-CDL1-8N3040 | | ASD-CDL2-8A30CC | 12/20/30 W | ASD-CDL5-8AD30AC | 12/20/30 W | |
| | ASD-CDL1-6N2050 | | ASD-CDL1-8N3050 | | | | | | |
| Power Factor | > 0.9 | | | | | | | | |
| Output voltage | ASD-CDL1-6N2030 | 48 V | ASD-CDL1-8N3030 | 48 V | ASD-CDL2-6A22CC | 30 V | ASD-CDL5-6AD22AC | 30-42 V | |
| | ASD-CDL1-6N2040 | | ASD-CDL1-8N3040 | | ASD-CDL2-8A30CC | | ASD-CDL5-8AD30AC | | |
| | ASD-CDL1-6N2050 | | ASD-CDL1-8N3050 | | | | | | |
| LED Driver Class | non-isolation for CDL1 and CDL2, for CDL5 - Class 2 | | | | | | | | |
| Regular and Voluntary Certifications | | | | | | | | | |
| 5-year limited warranty | cETLus certified 4008281 | Energy Star certified | | | | | | | |

INSTALLATION GUIDE

IMPORTANT SAFETY INFORMATION:

Please read all the instructions below before installation.

- ▶ Make sure that the supply voltage corresponds to the rated product voltage.
- ▶ The product must be installed by a qualified electrician in accordance with the National Electrical Code and corresponding local codes.
- ▶ If the product is damaged, do not use it.

⚠ WARNING

RISK OF PERSONAL INJURY – READ and follow all WARNINGS and installation instructions.

Keep or give to the owner for future reference.

Risk of cuts: Wear gloves to prevent cuts or abrasions when removing from carton, handling, installing, and maintaining this product.

Risk of electric shock: This product must be installed in accordance with the applicable installation code by a person familiar with the construction and operation of the product and the hazards involved.

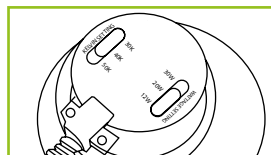
Risk of Fire: Minimum 194°F supply conductors. Consult a qualified electrician to ensure correct branch circuit conductor.

ASD® assumes no responsibility for claims arising out of improper or careless installation or handling of this product.

For recessed installation: Access above ceiling required. Inherently protected. Vapor barrier must be suitable for 194°F.

POWER AND COLOR TEMPERATURE SETTINGS:

For models with power and color adjustable options you can choose power and color temperature with a simple switch.

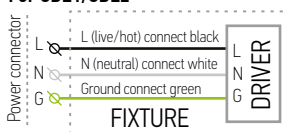


PACKAGE CONTENTS:

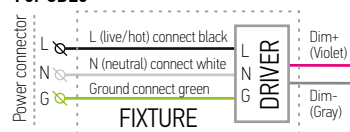
| Description | Q-ty |
|----------------------------------|------|
| LED Commercial Downlight Fixture | 1 |
| Box | 1 |
| Cut sheet | 2 |

ELECTRICAL SCHEMATIC DIAGRAM:

For CDL1/CDL2

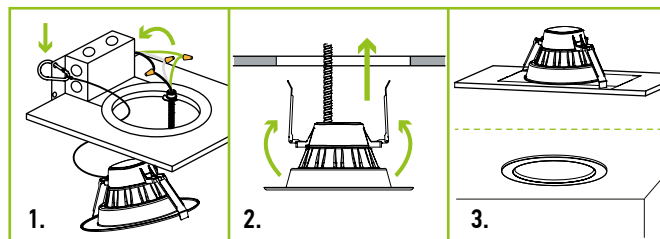


For CDL5



INSTALLATION STEPS:

1. Secure the safety latch onto a structural part of the original fixture housing above the ceiling. Connect the wires: Black to Black, White to White, Green to Green.
2. Before inserting the fixture into the mounting surface opening, fold up the two spring mounting tabs and release as the fixture is placed into the mounting surface.
3. Ensure that the spring mounting tabs have securely mounted the fixture so that the front trim is flush against the mounting surface



For most up-to-date spec sheets please refer to asd-lighting.com