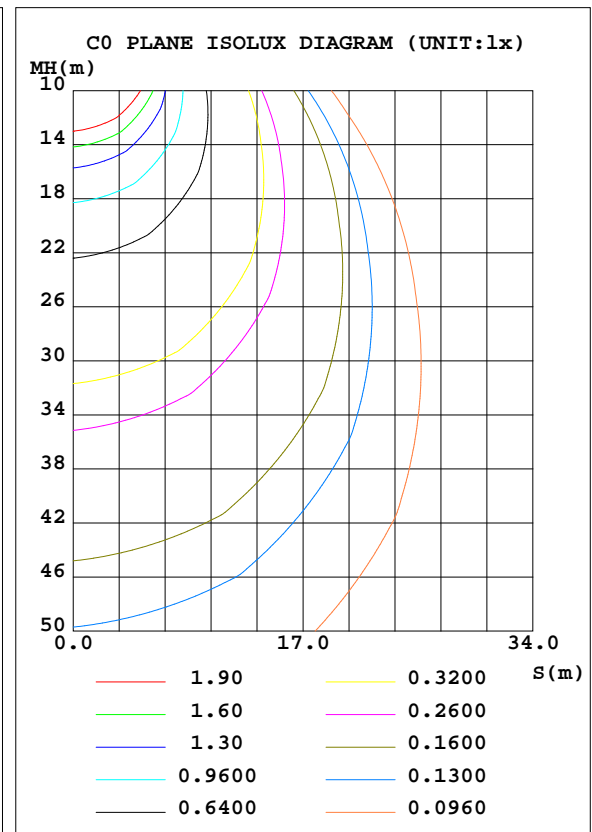
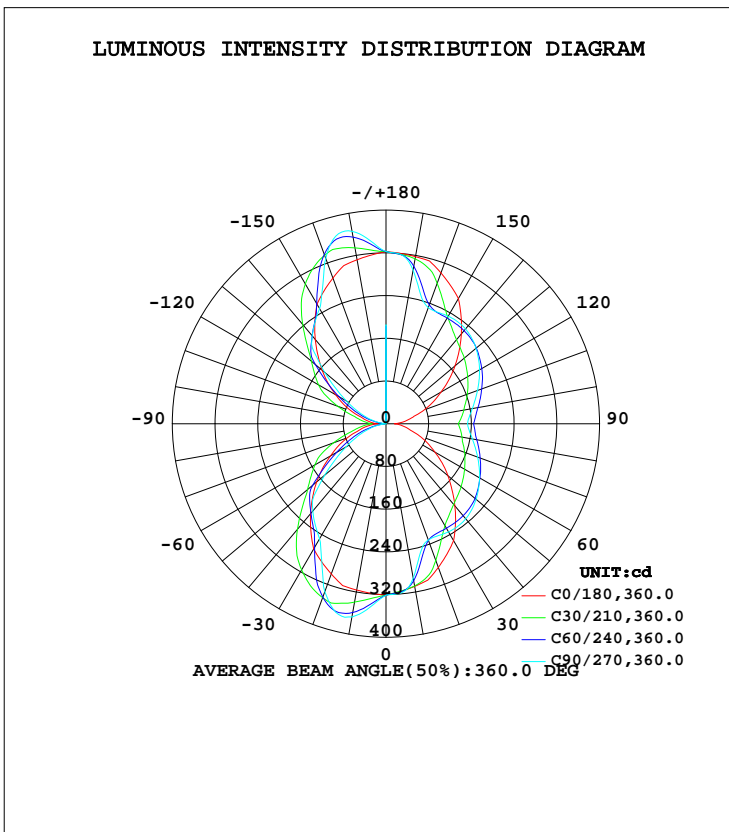


LUMINAIRE PHOTOMETRIC TEST REPORT

Test:U:120.00V I:0.2003A P:23.690W PF:0.9857 Freq:60.00Hz Lamp Flux:2066.3x1 lm		
NAME: ASD-LVF26M-4D23BK/CH_5000K	TYPE:LED	WEIGHT:
SPEC.:N/A	DIM.:	SERIAL No.:
MFR.: ASD Lighting Corp	SUR.:	Shielding Angle:

DATA OF LAMP		PHOTOMETRIC DATA Eff: 87.22 lm/W			
MODEL	ASD-LVF26M-4D23BK/CH	I _{max} (cd)	370.5	S/MH(C0/180)	1.24
NOMINAL POWER(W)	23	LOR(%)	100.0	S/MH(C90/270)	1.16
RATED VOLTAGE(V)	120	TOTAL FLUX(lm)	2066.3	η UP, DN(C0-180)	28.5,28.3
NOMINAL FLUX(lm)	2066.3	CIE CLASS	DIFFUSE	η UP, DN(C180-360)	21.6,21.7
LAMPS INSIDE	1	η up(%)	50.0	CIBSE SHR NOM	1.25
TEST VOLTAGE(V)	120	η down(%)	50.0	CIBSE SHR MAX	1.30



C Range: 0 - 360DEG
 C Interval: 15.0DEG
 Test Speed: HIGH
 Temperature: 25.0DEG
 Operators: Alan Wang
 Test Date: 23 August 2023

γ Range: 0 - 180DEG
 γ Interval: 1.0DEG
 Test System: EVERFINE GO-R5000_V2 SYSTEM V2.00.416
 Humidity: 43.8%
 Test Distance: 2.500m [K=1.0391]
 Remarks:

ZONAL FLUX DIAGRAM

ZONAL FLUX DIAGRAM:

γ	C0	C45	C90	C135	C180	C225	C270	C315	γ	Φ zone	Φ total	%lum, lamp
10	309.2	305.1	293.7	309.0	316.2	350.5	367.4	346.6	0- 10	31.01	31.01	1.5,1.5
20	286.5	246.6	231.8	250.8	299.5	356.0	334.9	346.4	10- 20	88.09	119.1	5.76,5.76
30	253.1	217.7	234.0	221.3	270.9	295.2	249.0	283.1	20- 30	126.7	245.8	11.9,11.9
40	200.9	213.2	232.5	217.3	219.9	226.2	213.2	217.8	30- 40	149.5	395.3	19.1,19.1
50	151.6	204.7	220.3	209.6	169.5	188.4	149.8	180.8	40- 50	158.9	554.2	26.8,26.8
60	105.3	193.2	202.4	198.1	119.6	134.2	86.14	125.1	50- 60	150.5	704.7	34.1,34.1
70	66.96	179.9	182.6	184.1	77.26	76.41	44.04	69.68	60- 70	131.5	836.2	40.5,40.5
80	37.12	166.8	164.4	170.3	42.55	36.19	12.10	31.05	70- 80	108.4	944.5	45.7,45.7
90	15.82	158.7	152.7	158.8	15.49	12.75	0.2257	12.96	80- 90	87.91	1032	50,50
100	41.59	169.9	164.2	166.6	37.05	31.89	11.98	34.41	90-100	87.73	1120	54.2,54.2
110	76.00	184.2	182.5	179.5	68.16	70.71	43.57	74.73	100-110	108.2	1228	59.4,59.4
120	119.1	198.5	202.3	192.5	108.8	126.8	85.79	132.6	110-120	131.5	1360	65.8,65.8
130	168.9	210.2	220.2	203.7	156.2	182.9	149.5	190.6	120-130	151.0	1511	73.1,73.1
140	219.6	218.3	231.8	211.9	206.1	218.5	214.9	226.8	130-140	159.6	1670	80.8,80.8
150	271.1	223.0	232.7	217.0	258.6	281.6	249.1	290.6	140-150	149.8	1820	88.1,88.1
160	300.7	253.8	231.8	247.2	290.7	346.5	330.0	356.8	150-160	126.7	1947	94.2,94.2
170	317.8	308.1	292.6	304.6	312.0	346.2	365.9	351.5	160-170	88.24	2035	98.5,98.5
180	322.4	322.4	322.4	322.4	322.4	322.4	322.4	322.4	170-180	31.06	2066	100,100
DEG	LUMINOUS INTENSITY:cd									UNIT:lm		

Conical surface Flux(90deg): 474.61 lm

%lum = 23.0%

%lamp = 23.0%

Conical surface Flux(120deg): 704.69 lm

%lum = 34.1%

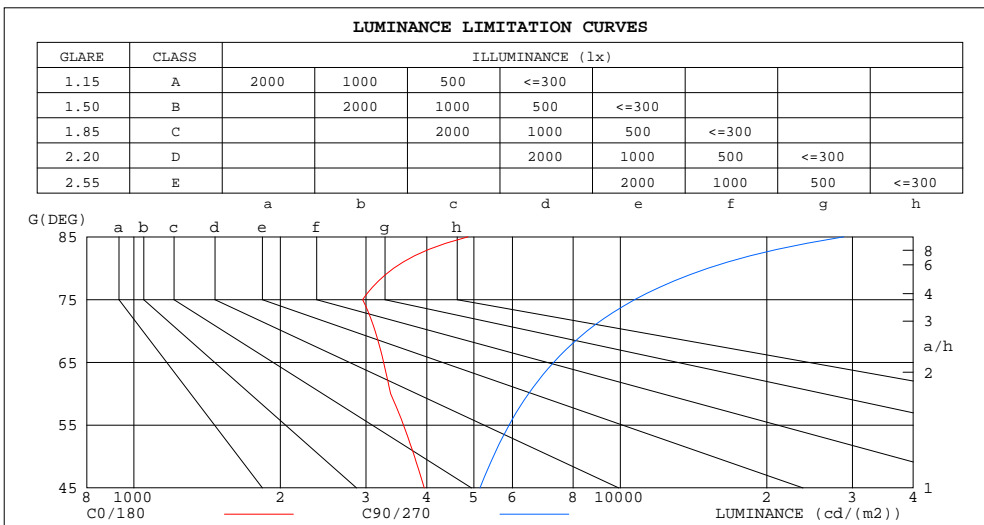
%lamp = 34.1%

C Range: 0 - 360DEG
 C Interval: 15.0DEG
 Test Speed: HIGH
 Temperature: 25.0DEG
 Operators: Alan Wang
 Test Date: 23 August 2023

γ Range: 0 - 180DEG
 γ Interval: 1.0DEG
 Test System: EVERFINE GO-R5000_V2 SYSTEM V2.00.416
 Humidity: 43.8%
 Test Distance: 2.500m [K=1.0391]
 Remarks:

LUMINANCE LIMITATION CURVES

Test:U:120.00V I:0.2003A P:23.690W PF:0.9857 Freq:60.00Hz Lamp Flux:2066.3x1 lm		
NAME: ASD-LVF26M-4D23BK/CH_5000K	TYPE:LED	WEIGHT:
SPEC.:N/A	DIM.:	SERIAL No.:
MFR.: ASD Lighting Corp	SUR.:	Shielding Angle:



LUMINANCE cd/(m2)		
G(DEG)	C0/180	C90/270
85	4860	28787
80	3420	15146
75	2953	10703
70	3132	8543
65	3261	7295
60	3370	6476
55	3584	5905
50	3774	5483
45	3954	5147

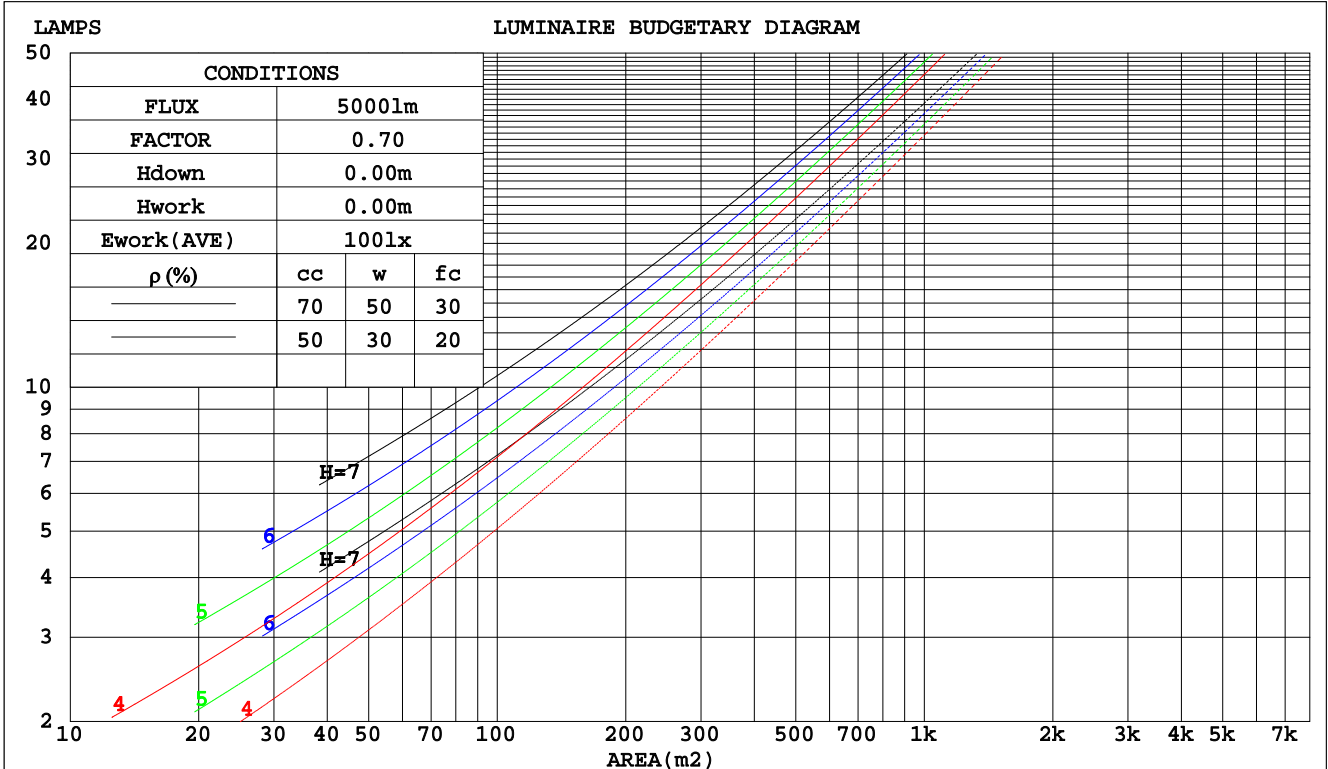
C Range: 0 - 360DEG
 C Interval: 15.0DEG
 Test Speed: HIGH
 Temperature: 25.0DEG
 Operators: Alan Wang
 Test Date: 23 August 2023

γ Range: 0 - 180DEG
 γ Interval: 1.0DEG
 Test System: EVERFINE GO-R5000_V2 SYSTEM V2.00.416
 Humidity: 43.8%
 Test Distance: 2.500m [K=1.0391]
 Remarks:

CU AND LUMINAIRE BUDGETARY ESTIMATE DIAGRAM

Test:U:120.00V I:0.2003A P:23.690W PF:0.9857 Freq:60.00Hz Lamp Flux:2066.3x1 lm		
NAME: ASD-LVF26M-4D23BK/CH_5000K	TYPE:LED	WEIGHT:
SPEC.:N/A	DIM.:	SERIAL No.:
MFR.: ASD Lighting Corp	SUR.:	Shielding Angle:

pcc	80%			70%			50%			30%			10%			0
	50%	30%	10%	50%	30%	10%	50%	30%	10%	50%	30%	10%	50%	30%	10%	0
pw																
pfc	20%			20%			20%			20%			20%			0
RCR	RCR:Room Cavity Ratio						Coefficients of Utilization(CU)									
0.0	1.07	1.07	1.07	.99	.99	.99	.83	.83	.83	.69	.69	.69	.56	.56	.56	.50
1.0	.91	.86	.82	.84	.80	.76	.70	.68	.65	.58	.56	.54	.47	.45	.44	.39
2.0	.79	.72	.66	.72	.67	.61	.61	.56	.53	.50	.47	.44	.40	.38	.36	.31
3.0	.69	.61	.54	.63	.56	.51	.53	.48	.44	.44	.40	.37	.35	.32	.30	.26
4.0	.61	.52	.46	.56	.48	.43	.47	.41	.37	.39	.35	.31	.31	.28	.26	.22
5.0	.54	.45	.39	.50	.42	.36	.42	.36	.32	.35	.30	.27	.28	.25	.22	.19
6.0	.48	.40	.34	.45	.37	.32	.38	.32	.27	.31	.27	.23	.26	.22	.19	.16
7.0	.43	.35	.29	.40	.33	.28	.34	.28	.24	.29	.24	.21	.23	.20	.17	.14
8.0	.39	.31	.26	.37	.29	.24	.31	.25	.21	.26	.22	.18	.21	.18	.15	.13
9.0	.36	.28	.23	.33	.26	.22	.29	.23	.19	.24	.20	.16	.20	.16	.14	.12
10.0	.33	.26	.21	.31	.24	.19	.26	.21	.17	.22	.18	.15	.18	.15	.12	.10



C Range: 0 - 360DEG
 C Interval: 15.0DEG
 Test Speed: HIGH
 Temperature: 25.0DEG
 Operators: Alan Wang
 Test Date: 23 August 2023

γ Range: 0 - 180DEG
 γ Interval: 1.0DEG
 Test System: EVERFINE GO-R5000_V2 SYSTEM V2.00.416
 Humidity: 43.8%
 Test Distance: 2.500m [K=1.0391]
 Remarks:

WEC AND CCEC

Test:U:120.00V I:0.2003A P:23.690W PF:0.9857 Freq:60.00Hz Lamp Flux:2066.3x1 lm		
NAME: ASD-LVF26M-4D23BK/CH_5000K	TYPE:LED	WEIGHT:
SPEC.:N/A	DIM.:	SERIAL No.:
MFR.: ASD Lighting Corp	SUR.:	Shielding Angle:

ρcc	80%			70%			50%			30%			10%			0
ρw	50%	30%	10%	50%	30%	10%	50%	30%	10%	50%	30%	10%	50%	30%	10%	0
ρfc	20%			20%			20%			20%			20%			0
RCR	RCR:Room Cavity Ratio						Wall Exitance Coefficients(WEC)									
0.0																
1.0	.327	.186	.059	.305	.174	.055	.263	.151	.048	.225	.130	.042	.189	.110	.035	
2.0	.289	.158	.049	.269	.148	.046	.231	.128	.040	.196	.110	.034	.163	.092	.029	
3.0	.261	.139	.042	.242	.130	.039	.207	.112	.034	.175	.096	.029	.145	.081	.025	
4.0	.237	.123	.036	.220	.115	.034	.188	.100	.030	.159	.085	.026	.131	.071	.022	
5.0	.218	.111	.032	.202	.104	.030	.173	.090	.026	.145	.077	.023	.120	.064	.019	
6.0	.201	.101	.029	.187	.094	.027	.159	.082	.024	.134	.070	.020	.110	.058	.017	
7.0	.186	.092	.026	.173	.086	.025	.148	.075	.022	.124	.064	.019	.102	.053	.016	
8.0	.174	.085	.024	.161	.079	.022	.138	.069	.020	.116	.059	.017	.095	.049	.014	
9.0	.162	.079	.022	.151	.074	.021	.129	.064	.018	.109	.054	.016	.089	.045	.013	
10.0	.152	.073	.020	.142	.068	.019	.121	.059	.017	.102	.051	.014	.084	.042	.012	

ρcc	80%			70%			50%			30%			10%			0
ρw	50%	30%	10%	50%	30%	10%	50%	30%	10%	50%	30%	10%	50%	30%	10%	0
ρfc	20%			20%			20%			20%			20%			0
RCR	RCR:Room Cavity Ratio						Ceiling Cavity Exitance Coefficients(CCEC)									
0.0	.572	.572	.572	.489	.489	.489	.333	.333	.333	.192	.192	.192	.061	.061	.061	
1.0	.566	.540	.517	.484	.464	.445	.331	.319	.308	.191	.185	.179	.061	.059	.058	
2.0	.559	.519	.485	.479	.447	.419	.328	.309	.293	.189	.180	.172	.061	.058	.056	
3.0	.552	.503	.465	.473	.434	.403	.325	.302	.283	.188	.176	.167	.060	.057	.055	
4.0	.545	.491	.451	.467	.425	.392	.321	.296	.276	.186	.173	.163	.060	.056	.054	
5.0	.538	.482	.441	.462	.417	.384	.318	.291	.271	.184	.171	.161	.059	.056	.053	
6.0	.531	.475	.434	.457	.411	.378	.315	.288	.268	.183	.169	.159	.059	.055	.053	
7.0	.525	.469	.429	.452	.406	.374	.312	.285	.265	.181	.168	.158	.059	.055	.052	
8.0	.519	.463	.425	.447	.402	.371	.309	.282	.263	.180	.166	.157	.058	.055	.052	
9.0	.513	.459	.422	.442	.398	.368	.306	.280	.262	.179	.165	.156	.058	.054	.052	
10.0	.508	.455	.420	.438	.395	.366	.304	.278	.260	.177	.164	.155	.057	.054	.052	

C Range: 0 - 360DEG
 C Interval: 15.0DEG
 Test Speed: HIGH
 Temperature: 25.0DEG
 Operators: Alan Wang
 Test Date: 23 August 2023

γ Range: 0 - 180DEG
 γ Interval: 1.0DEG
 Test System: EVERFINE GO-R5000_V2 SYSTEM V2.00.416
 Humidity: 43.8%
 Test Distance: 2.500m [K=1.0391]
 Remarks:

UGR(Unified Glare Rating) Table

Test:U:120.00V I:0.2003A P:23.690W PF:0.9857 Freq:60.00Hz Lamp Flux:2066.3x1 lm		
NAME: ASD-LVF26M-4D23BK/CH_5000K	TYPE:LED	WEIGHT:
SPEC.:N/A	DIM.:	SERIAL No.:
MFR.: ASD Lighting Corp	SUR.:	Shielding Angle:

ceiling/cavity	0.7	0.7	0.5	0.5	0.3	0.7	0.7	0.5	0.5	0.3
walls	0.5	0.3	0.5	0.3	0.3	0.5	0.3	0.5	0.3	0.3
working plane	0.2	0.2	0.2	0.2	0.2	0.2	0.2	0.2	0.2	0.2
Room dimensions	Viewed crosswise					Viewed endwise				
x = 2H y = 2H	14.3	15.3	15.2	16.2	17.3	16.5	17.5	17.3	18.3	19.4
3H	16.1	17.0	17.0	17.9	19.1	19.2	20.1	20.1	21.0	22.2
4H	17.0	17.8	17.9	18.7	19.9	20.8	21.6	21.7	22.5	23.7
6H	17.8	18.5	18.7	19.5	20.7	22.5	23.2	23.4	24.1	25.3
8H	18.1	18.9	19.1	19.8	21.0	23.4	24.1	24.3	25.1	26.3
12H	18.5	19.2	19.4	20.1	21.3	24.5	25.2	25.4	26.2	27.4
4H 2H	15.8	16.6	16.7	17.6	18.7	17.2	18.0	18.1	19.0	20.1
3H	18.1	18.8	19.0	19.7	20.9	20.2	20.9	21.1	21.9	23.1
4H	19.2	19.9	20.2	20.8	22.1	21.9	22.6	22.9	23.5	24.8
6H	20.4	20.9	21.3	21.9	23.2	23.8	24.4	24.8	25.3	26.6
8H	20.9	21.4	21.9	22.4	23.7	24.8	25.4	25.8	26.4	27.6
12H	21.4	21.9	22.4	22.8	24.1	26.1	26.5	27.0	27.5	28.8
8H 4H	20.5	21.1	21.5	22.0	23.3	22.5	23.0	23.5	24.0	25.3
6H	22.2	22.7	23.2	23.7	25.0	24.7	25.1	25.7	26.1	27.4
8H	23.1	23.5	24.1	24.5	25.8	25.9	26.3	27.0	27.3	28.7
12H	23.9	24.3	25.0	25.3	26.6	27.4	27.7	28.4	28.7	30.1
12H 4H	20.9	21.4	21.9	22.4	23.6	22.6	23.1	23.6	24.0	25.3
6H	22.8	23.2	23.8	24.2	25.6	24.9	25.3	25.9	26.3	27.7
8H	23.9	24.3	24.9	25.3	26.6	26.3	26.7	27.3	27.7	29.0
Variations with the observer position at spacings:										
S = 1.0H	+ 0.1 / - 0.1					+ 0.1 / - 0.1				
1.5H	+ 0.2 / - 0.3					+ 0.2 / - 0.3				
2.0H	+ 0.3 / - 0.4					+ 0.3 / - 0.4				

CIE Pub.117, 2066 lm Total Lamp Luminous Flux Corrected (8log(F/F0) = 2.5)
 Area: 0.0625 m2

C Range: 0 - 360DEG
 C Interval: 15.0DEG
 Test Speed: HIGH
 Temperature: 25.0DEG
 Operators: Alan Wang
 Test Date: 23 August 2023

γ Range: 0 - 180DEG
 γ Interval: 1.0DEG
 Test System: EVERFINE GO-R5000_V2 SYSTEM V2.00.416
 Humidity: 43.8%
 Test Distance: 2.500m [K=1.0391]
 Remarks:

UTILIZATION FACTORS TABLE

Test:U:120.00V I:0.2003A P:23.690W PF:0.9857 Freq:60.00Hz Lamp Flux:2066.3x1 lm		
NAME: ASD-LVF26M-4D23BK/CH_5000K	TYPE:LED	WEIGHT:
SPEC.:N/A	DIM.:	SERIAL No.:
MFR.: ASD Lighting Corp	SUR.:	Shielding Angle:

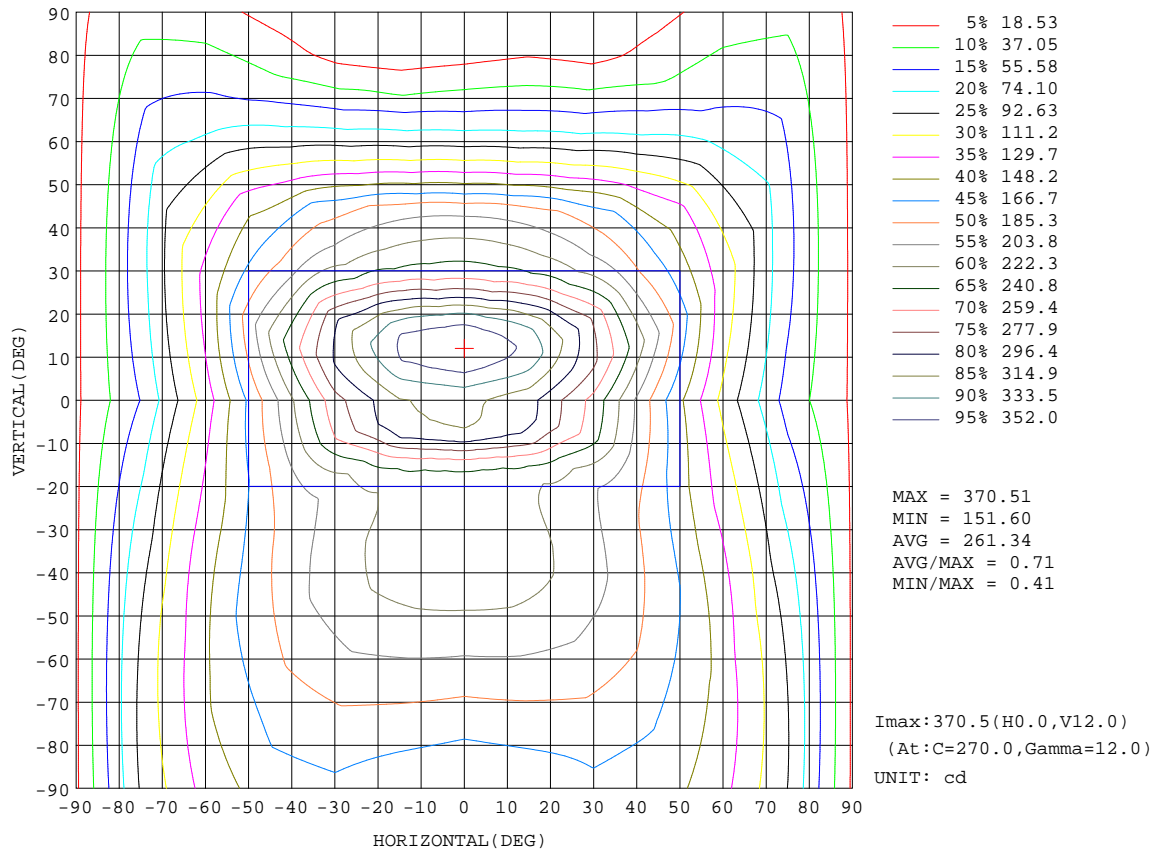
REFLECTANCE										
Ceiling	0.8	0.8	0.8	0.7	0.7	0.7	0.5	0.5	0.5	0
Walls	0.7	0.5	0.3	0.7	0.5	0.3	0.7	0.5	0.3	0
Working plane	0.2	0.2	0.2	0.2	0.2	0.2	0.2	0.2	0.2	0
ROOM INDEX	UTILIZATION FACTORS(PERCENT) $k(RI) \times RCR = 5$									
k = 0.60	42	30	24	40	29	23	35	27	21	14
0.80	51	39	31	48	37	30	42	33	27	18
1.00	58	46	38	55	44	37	48	40	33	21
1.25	65	53	45	61	50	43	53	44	39	25
1.50	70	59	51	65	55	48	56	48	43	27
2.00	78	67	59	72	63	56	62	55	49	31
2.50	82	72	65	76	68	61	65	58	53	33
3.00	86	77	70	79	72	66	67	62	57	35
4.00	90	83	77	83	77	72	71	66	62	38
5.00	93	87	81	86	81	76	73	69	65	40
ROOM INDEX	UF(total)									Direct
According to DIN EN 13032-2 2004			Suspended				SHRNOM = 1.25			

C Range: 0 - 360DEG
 C Interval: 15.0DEG
 Test Speed: HIGH
 Temperature: 25.0DEG
 Operators: Alan Wang
 Test Date: 23 August 2023

γ Range: 0 - 180DEG
 γ Interval: 1.0DEG
 Test System: EVERFINE GO-R5000_V2 SYSTEM V2.00.416
 Humidity: 43.8%
 Test Distance: 2.500m [K=1.0391]
 Remarks:

ISOCANDELA DIAGRAM

Test:U:120.00V I:0.2003A P:23.690W PF:0.9857 Freq:60.00Hz Lamp Flux:2066.3x1 lm		
NAME: ASD-LVF26M-4D23BK/CH_5000K	TYPE:LED	WEIGHT:
SPEC.:N/A	DIM.:	SERIAL No.:
MFR.: ASD Lighting Corp	SUR.:	Shielding Angle:

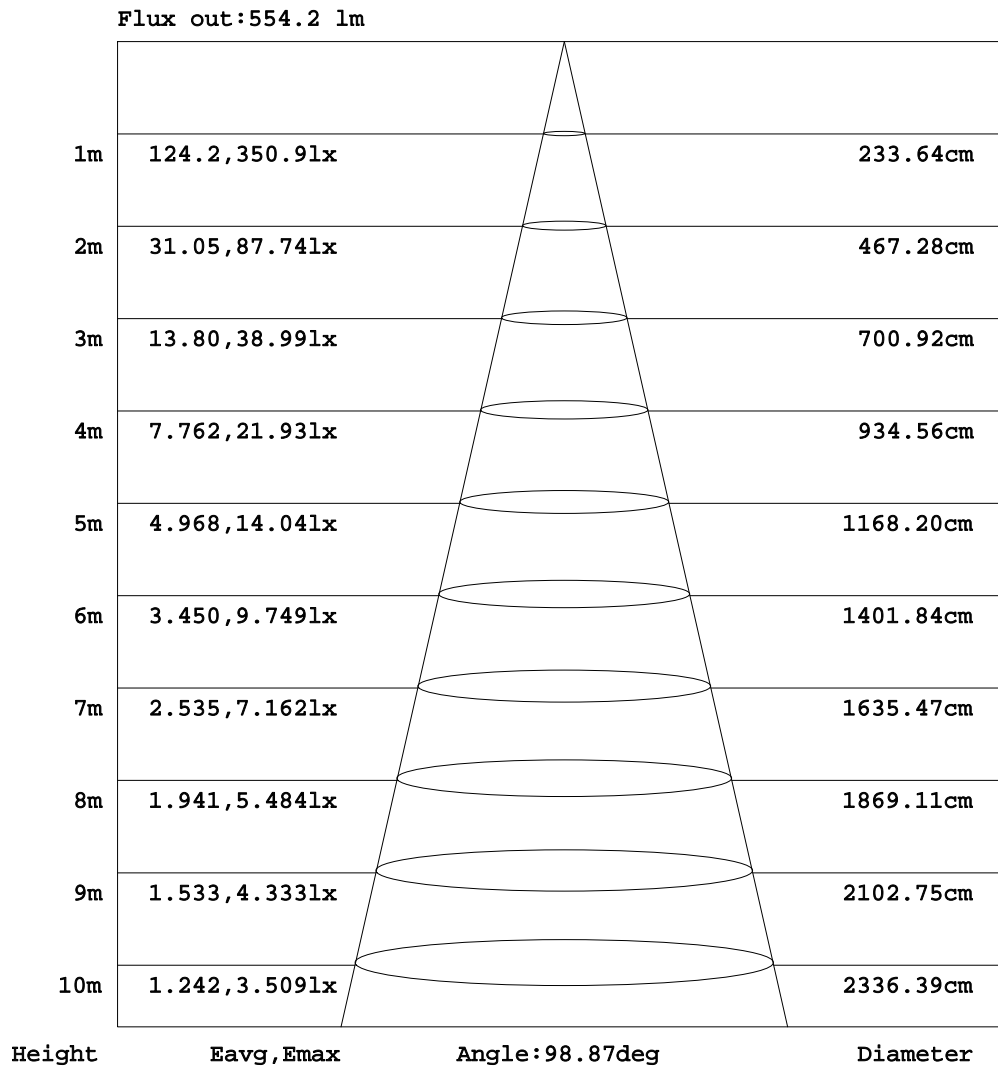


C Range: 0 - 360DEG
 C Interval: 15.0DEG
 Test Speed: HIGH
 Temperature: 25.0DEG
 Operators: Alan Wang
 Test Date: 23 August 2023

γ Range: 0 - 180DEG
 γ Interval: 1.0DEG
 Test System: EVERFINE GO-R5000_V2 SYSTEM V2.00.416
 Humidity: 43.8%
 Test Distance: 2.500m [K=1.0391]
 Remarks:

AAI Figure

Test:U:120.00V I:0.2003A P:23.690W PF:0.9857 Freq:60.00Hz Lamp Flux:2066.3x1 lm		
NAME: ASD-LVF26M-4D23BK/CH_5000K	TYPE:LED	WEIGHT:
SPEC.:N/A	DIM.:	SERIAL No.:
MFR.: ASD Lighting Corp	SUR.:	Shielding Angle:



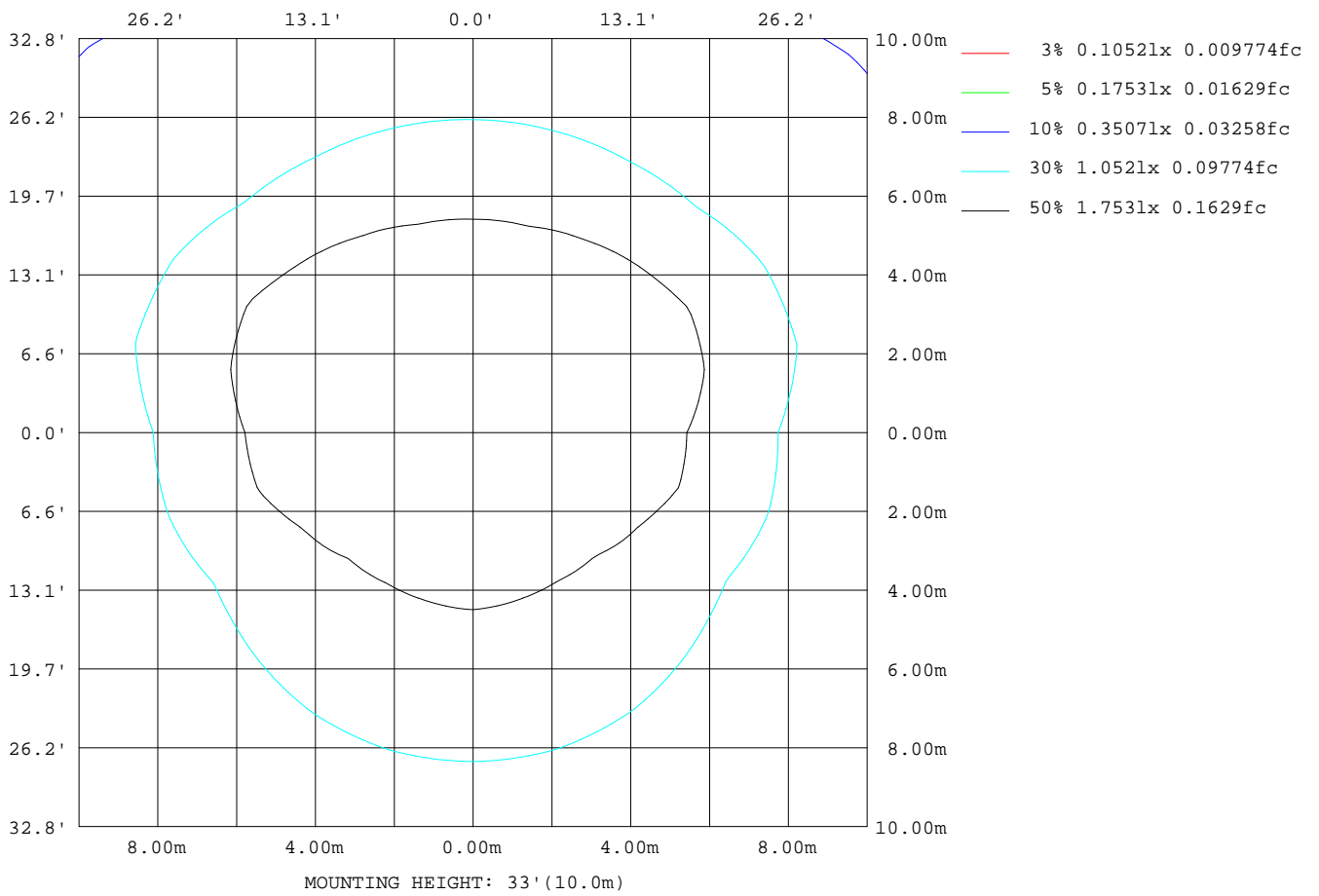
Note:The Curves indicate the illuminated area and the average illumination when the luminaire is at different distance.

C Range: 0 - 360DEG
 C Interval: 15.0DEG
 Test Speed: HIGH
 Temperature: 25.0DEG
 Operators: Alan Wang
 Test Date: 23 August 2023

γ Range: 0 - 180DEG
 γ Interval: 1.0DEG
 Test System: EVERFINE GO-R5000_V2 SYSTEM V2.00.416
 Humidity: 43.8%
 Test Distance: 2.500m [K=1.0391]
 Remarks:

ISOLUX DIAGRAM

Test:U:120.00V I:0.2003A P:23.690W PF:0.9857 Freq:60.00Hz Lamp Flux:2066.3x1 lm		
NAME: ASD-LVF26M-4D23BK/CH_5000K	TYPE:LED	WEIGHT:
SPEC.:N/A	DIM.:	SERIAL No.:
MFR.: ASD Lighting Corp	SUR.:	Shielding Angle:



C Range: 0 - 360DEG
 C Interval: 15.0DEG
 Test Speed: HIGH
 Temperature: 25.0DEG
 Operators: Alan Wang
 Test Date: 23 August 2023

γ Range: 0 - 180DEG
 γ Interval: 1.0DEG
 Test System: EVERFINE GO-R5000_V2 SYSTEM V2.00.416
 Humidity: 43.8%
 Test Distance: 2.500m [K=1.0391]
 Remarks:

LED Avg.L Report

Test:U:120.00V I:0.2003A P:23.690W PF:0.9857 Freq:60.00Hz Lamp Flux:2066.3x1 lm		
NAME: ASD-LVF26M-4D23BK/CH_5000K	TYPE:LED	WEIGHT:
SPEC.:N/A	DIM.:	SERIAL No.:
MFR.: ASD Lighting Corp	SUR.:	Shielding Angle:

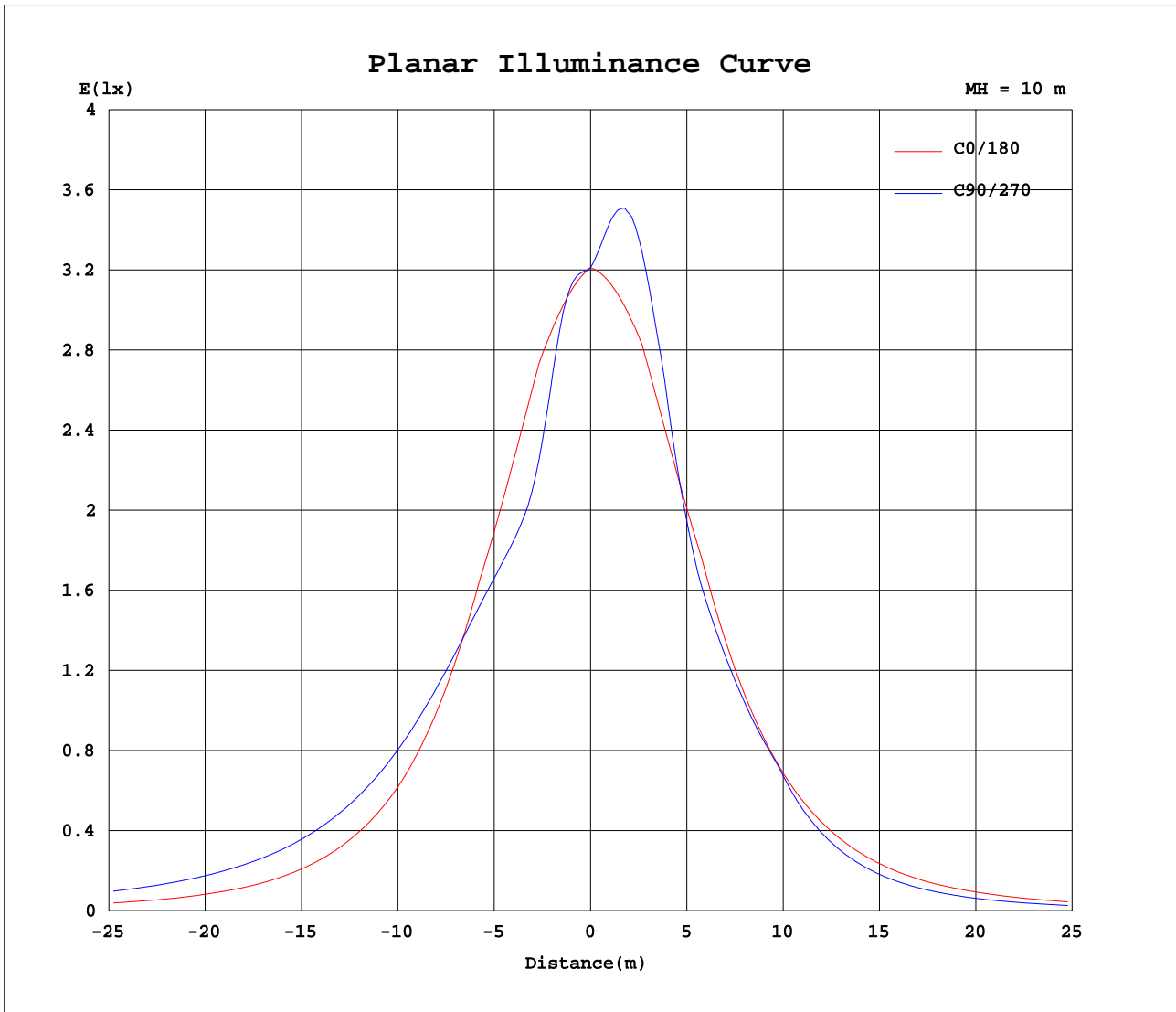
AvgL	cd/m2
L_0~180(65)av	3494
L_0~180(75)av	3210
L_0~180(85)av	5094
L_90~270(65)av	4842
L_90~270(75)av	6201
L_90~270(85)av	14414
L_45(65)av	5442
L_45(75)av	7021
L_45(85)av	17130

Standard: GB/T 29293-2012

C Range: 0 - 360DEG
C Interval: 15.0DEG
Test Speed: HIGH
Temperature: 25.0DEG
Operators: Alan Wang
Test Date: 23 August 2023

γ Range: 0 - 180DEG
 γ Interval: 1.0DEG
Test System: EVERFINE GO-R5000_V2 SYSTEM V2.00.416
Humidity: 43.8%
Test Distance: 2.500m [K=1.0391]
Remarks:

Planar Illuminance Curve



C Range: 0 - 360DEG
 C Interval: 15.0DEG
 Test Speed: HIGH
 Temperature: 25.0DEG
 Operators: Alan Wang
 Test Date: 23 August 2023

γ Range: 0 - 180DEG
 γ Interval: 1.0DEG
 Test System: EVERFINE GO-R5000_V2 SYSTEM V2.00.416
 Humidity: 43.8%
 Test Distance: 2.500m [K=1.0391]
 Remarks:

LUMINOUS DISTRIBUTION INTENSITY DATA

Test:U:120.00V I:0.2003A P:23.690W PF:0.9857 Freq:60.00Hz Lamp Flux:2066.3x1 lm		
NAME: ASD-LVF26M-4D23BK/CH_5000K	TYPE:LED	WEIGHT:
SPEC.:N/A	DIM.:	SERIAL No.:
MFR.: ASD Lighting Corp	SUR.:	Shielding Angle:

Table--1

UNIT: cd

C(DEG) γ (DEG)	0	15	30	45	60	75	90	105	120	135	150	165	180	195	210	225	240	255	270
0	321	321	321	321	321	321	321	321	321	321	321	321	321	321	321	321	321	321	321
5	315	314	315	315	316	317	318	318	318	318	318	318	319	323	329	334	339	343	345
10	309	308	309	305	299	294	294	295	301	309	314	315	316	326	339	350	359	364	367
15	303	303	297	278	260	251	250	252	262	282	304	312	314	329	348	360	364	363	365
20	287	287	273	247	232	231	232	231	235	251	280	299	299	322	347	356	346	336	335
25	270	270	244	225	226	229	231	230	228	229	250	282	285	313	335	331	311	289	285
30	253	251	221	218	226	231	234	232	228	221	227	263	271	301	316	295	268	251	249
35	227	227	207	215	226	232	235	233	228	219	214	239	245	281	292	256	237	232	231
40	201	204	197	213	225	231	233	232	227	217	204	215	220	259	258	226	219	216	213
45	175	182	190	209	222	227	227	228	225	214	197	194	194	235	222	206	202	198	191
50	152	164	184	205	218	221	220	221	220	210	191	175	170	208	192	188	179	157	150
55	128	148	177	200	211	213	212	213	213	205	184	158	145	180	171	170	140	121	115
60	105	133	170	193	203	204	202	205	206	198	177	144	120	151	154	134	106	90.6	86.1
65	86.1	124	163	187	196	196	193	196	199	191	170	133	98.4	131	133	103	78.8	66.2	63.1
70	67.0	115	157	180	188	186	183	187	190	184	163	124	77.3	112	105	76.4	56.0	44.1	44.0
75	47.8	105	150	173	180	177	173	178	183	177	155	114	56.1	93.1	77.1	54.9	34.8	25.9	27.5
80	37.1	101	145	167	173	168	164	170	175	170	149	107	42.6	72.5	56.9	36.2	17.5	6.42	12.1
85	26.5	97.0	140	163	167	162	157	162	169	165	143	101	29.0	51.3	41.2	24.1	6.58	0.33	0.23
90	15.8	92.4	135	159	164	158	153	158	164	159	136	94.6	15.5	30.0	26.0	12.8	2.43	0.29	0.23
95	28.7	99.1	142	164	169	162	157	161	167	163	141	98.7	26.3	48.3	38.7	21.9	5.97	1.45	0.21
100	41.6	105	148	170	175	170	164	168	172	167	145	102	37.1	66.7	51.9	31.9	16.6	12.2	12.0
105	54.5	112	155	177	183	178	173	176	180	173	150	106	47.8	85.0	70.1	49.9	34.3	28.8	27.2
110	76.0	122	162	184	191	187	182	185	187	180	157	116	68.2	103	96.1	70.7	53.2	45.5	43.6
115	97.5	132	169	191	199	197	192	195	195	186	163	125	88.5	120	124	96.0	75.0	65.4	62.5
120	119	143	177	199	207	205	202	204	203	192	170	135	109	139	146	127	102	88.8	85.8
125	144	158	184	205	214	214	212	212	210	199	177	150	132	167	163	161	134	119	114
130	169	176	191	210	221	222	220	220	216	204	183	166	156	194	182	183	173	155	150
135	194	196	198	214	225	228	227	226	221	208	190	185	180	219	209	200	199	196	191
140	220	217	206	218	228	232	232	230	223	212	197	206	206	243	243	218	215	215	215
145	245	240	217	220	229	233	234	231	224	214	208	229	232	267	276	245	233	231	232
150	271	263	231	223	229	232	233	230	225	217	222	253	259	288	302	282	260	248	249
155	286	281	253	232	229	230	230	228	225	226	244	271	275	301	322	319	300	282	281
160	301	298	280	254	237	232	232	231	233	247	272	289	291	313	336	346	338	329	330
165	316	313	303	283	264	253	251	252	261	278	297	305	307	322	340	352	358	360	364
170	318	316	314	308	300	294	293	293	297	305	310	311	312	321	335	346	355	361	366
175	320	319	318	318	318	318	318	317	317	317	316	316	317	321	327	333	338	342	345
180	322	322	322	322	322	322	322	322	322	322	322	322	322	322	322	322	322	322	322

C Range: 0 - 360DEG
 C Interval: 15.0DEG
 Test Speed: HIGH
 Temperature: 25.0DEG
 Operators: Alan Wang
 Test Date: 23 August 2023

γ Range: 0 - 180DEG
 γ Interval: 1.0DEG
 Test System: EVERFINE GO-R5000_V2 SYSTEM V2.00.416
 Humidity: 43.8%
 Test Distance: 2.500m [K=1.0391]
 Remarks:

LUMINOUS DISTRIBUTION INTENSITY DATA

Test:U:120.00V I:0.2003A P:23.690W PF:0.9857 Freq:60.00Hz Lamp Flux:2066.3x1 lm		
NAME: ASD-LVF26M-4D23BK/CH_5000K	TYPE:LED	WEIGHT:
SPEC.:N/A	DIM.:	SERIAL No.:
MFR.: ASD Lighting Corp	SUR.:	Shielding Angle:

Table--2

UNIT: cd

C(DEG) γ (DEG)	285	300	315	330	345														
0	321	321	321	321	321														
5	342	338	332	326	320														
10	363	356	347	334	320														
15	361	358	353	341	321														
20	332	339	346	336	311														
25	286	303	320	321	299														
30	248	261	283	300	285														
35	230	232	245	275	264														
40	213	214	218	241	240														
45	195	197	198	207	215														
50	154	171	181	180	190														
55	118	133	159	162	163														
60	89.2	101	125	144	137														
65	66.8	74.4	94.8	122	118														
70	48.1	52.9	69.7	94.8	101														
75	32.9	34.3	48.9	69.1	83.7														
80	18.4	17.0	31.1	51.6	66.5														
85	3.64	6.46	21.6	39.1	49.4														
90	0.26	2.08	13.0	27.0	32.4														
95	1.28	6.08	23.3	41.5	52.9														
100	12.3	17.2	34.4	56.4	73.4														
105	29.0	35.4	53.1	76.0	93.8														
110	46.0	55.0	74.7	103	113														
115	66.4	77.3	101	132	131														
120	90.0	105	133	155	151														
125	120	138	169	173	180														
130	156	177	191	193	208														
135	199	204	207	220	236														
140	217	221	227	254	260														
145	234	238	253	290	283														
150	251	265	291	316	304														
155	285	306	329	336	315														
160	332	344	357	348	325														
165	363	364	360	350	332														
170	363	359	351	341	327														
175	343	340	335	329	324														
180	322	322	322	322	322														

C Range: 0 - 360DEG
 C Interval: 15.0DEG
 Test Speed: HIGH
 Temperature: 25.0DEG
 Operators: Alan Wang
 Test Date: 23 August 2023

γ Range: 0 - 180DEG
 γ Interval: 1.0DEG
 Test System: EVERFINE GO-R5000_V2 SYSTEM V2.00.416
 Humidity: 43.8%
 Test Distance: 2.500m [K=1.0391]
 Remarks: