



LED SURFACE MINI PANEL

► **DESIGN** - LED SURFACE MINI PANEL offers a sleek, low-profile design, ideal for spaces with low ceilings. It's acrylic lens with a 110° beam angle ensures you even light distribution. Smooth triac dimming capabilities from 10% to 100% with modern LED dimmers gives you full control over your space. It is also highly efficient with up to 100 Lm/W output. Pendant installation is available with additional accessories.

► **VARIETY** - The fixture comes in round, oval and square shapes in 5-inch, 7-inch, 9-inch, 12-inch, 15-inch, 18-inch, 24-inch and 32-inch with voltage 120V or 120-277V and available in White, Black or Nickel finishes.

► **COLOR SELECTABLE** - You can choose either a 2,700K soft white, 3,000K warm white, 3,500K neutral white, 4,000K cool white, or 5,000K daylight color temperature.

► **INSTALLATION** - The fixture can be installed on either an existing outlet box or a remodeled can by using a retrofit kit with universal TP24 or E26 connectors. It is also suitable for Damp and Wet Locations, making it perfect for family room, bedroom or any other common areas.

► **ADVANTAGES** - With a lifespan of 50,000 hours, these fixtures are made to last decades under normal operation! ASD provides a 5-year limited warranty along with ETL certification to guarantee top quality products and safety!

► **OPTIONS:**

MODELS WITH MOTION SENSOR - The built-in PIR motion sensor will turn off the fixture automatically when no motion is detected.

MODELS WITH BATTERY BACK-UP - The built-in battery back-up provide 90 minutes of power in case of emergency.

Catalog number	
Notes	
Type	



PRODUCT PRESENTATION:

Model	Size	Power	Voltage	Dimmable	Lumens	CCT	Finish	Dimensions	Pre-installed	Certification
MPR ROUND										
ASD-MPR-5D10WH	5 inch	10W	120 V	TRIAC	692 lm	5CCT (2,700/3,000/4,000/5,000/6,000 K)	White	5-5/16" x 1"	-	ETL
ASD-MPR-5D10CC-WH-6PACK	5 inch	10W	120 V	TRIAC	777 lm	3CCT (3,000/4,000/5,000 K)	White	5-5/16" x 1"	-	ETL
ASD-MPR-5D10CC-BR-6PACK	5 inch	10W	120 V	TRIAC	777 lm	3CCT (3,000/4,000/5,000 K)	Bronze	5-5/16" x 1"	-	ETL
ASD-MPR-5D10BK	5 inch	10W	120 V	TRIAC	692 lm	5CCT (2,700/3,000/4,000/5,000/6,000 K)	Black	5-5/16" x 1"	-	ETL
ASD-MPR-5D10CC-BK-6PACK	5 inch	10W	120 V	TRIAC	777 lm	3CCT (3,000/4,000/5,000 K)	Black	5-5/16" x 1"	-	ETL
ASD-MPR-7D15WH	7 inch	15W	120 V	TRIAC	1,262 lm	5CCT (2,700/3,000/4,000/5,000/6,000 K)	White	7-1/16" x 1"	-	ETL
ASD-MPR-7D15CC-WH	7 inch	15W	120 V	TRIAC	1,341 lm	3CCT (3,000/4,000/5,000 K)	White	7-1/16" x 1"	-	ETL
ASD-MPR-7D15CC-WH-6PACK	7 inch	15W	120 V	TRIAC	1,341 lm	3CCT (3,000/4,000/5,000 K)	White	7-1/16" x 1"	-	ETL
ASD-MPR-7D15NK	7 inch	15W	120 V	TRIAC	1,262 lm	5CCT (2,700/3,000/4,000/5,000/6,000 K)	Nickel	7-1/16" x 1"	-	ETL
ASD-MPR-7D15CC-BR-6PACK	7 inch	15W	120 V	TRIAC	1,341 lm	3CCT (3,000/4,000/5,000 K)	Bronze	7-1/16" x 1"	-	ETL
ASD-MPR-7D15BK	7 inch	15W	120 V	TRIAC	1,262 lm	5CCT (2,700/3,000/4,000/5,000/6,000 K)	Black	7-1/16" x 1"	-	ETL
ASD-MPR-7D15CC-BK	7 inch	15W	120 V	TRIAC	1,341 lm	3CCT (3,000/4,000/5,000 K)	Black	7-1/16" x 1"	-	ETL
ASD-MPR-7D15CC-BK-6PACK	7 inch	15W	120 V	TRIAC	1,341 lm	3CCT (3,000/4,000/5,000 K)	Black	7-1/16" x 1"	-	ETL
ASD-MPR-9D18WH	9 inch	18W	120 V	TRIAC	1,664 lm	5CCT (2,700/3,000/4,000/5,000/6,000 K)	White	8-7/8" x 1-3/4"	-	ETL
ASD-MPR-9D18CC-WH	9 inch	18W	120 V	TRIAC	1,614 lm	3CCT (3,000/4,000/5,000 K)	White	8-7/8" x 1"	-	ETL
ASD-MPR-9D18CC-WH-6PACK	9 inch	18W	120 V	TRIAC	1,614 lm	3CCT (3,000/4,000/5,000 K)	White	8-7/8" x 1"	-	ETL
ASD-MPR-9D18NK	9 inch	18W	120 V	TRIAC	1,664 lm	5CCT (2,700/3,000/4,000/5,000/6,000 K)	Nickel	8-7/8" x 1-3/4"	-	ETL
ASD-MPR-9D18CC-BR-6PACK	9 inch	18W	120 V	TRIAC	1,614 lm	3CCT (3,000/4,000/5,000 K)	Bronze	8-7/8" x 1"	-	ETL
ASD-MPR-9D18BK	9 inch	18W	120 V	TRIAC	1,664 lm	5CCT (2,700/3,000/4,000/5,000/6,000 K)	Black	8-7/8" x 1-3/4"	-	ETL
ASD-MPR-9D18CC-BK	9 inch	18W	120 V	TRIAC	1,614 lm	3CCT (3,000/4,000/5,000 K)	Black	8-7/8" x 1"	-	ETL
ASD-MPR-9D18CC-BK-6PACK	9 inch	18W	120 V	TRIAC	1,614 lm	3CCT (3,000/4,000/5,000 K)	Black	8-7/8" x 1"	-	ETL
ASD-MPR-12D24WH	12 inch	24W	120 V	TRIAC	2,145 lm	5CCT (2,700/3,000/4,000/5,000/6,000 K)	White	11-13/16" x 1"	-	ETL
ASD-MPR-12D24CC-WH	12 inch	24W	120 V	TRIAC	2,333 lm	3CCT (3,000/4,000/5,000 K)	White	11-13/16" x 1"	-	ETL
ASD-MPR-MV-12D24WH	12 inch	24W	120-277 V	TRIAC	2,069 lm	5CCT (2,700/3,000/4,000/5,000/6,000 K)	White	11-15/16" x 1"	-	ETL
ASD-MPR-12D24NK	12 inch	24W	120 V	TRIAC	2,145 lm	5CCT (2,700/3,000/4,000/5,000/6,000 K)	Nickel	11-13/16" x 1"	-	ETL
ASD-MPR-12D24CC-BR	12 inch	24W	120 V	TRIAC	2,333 lm	3CCT (3,000/4,000/5,000 K)	Bronze	11-13/16" x 1"	-	ETL
ASD-MPR-12D24BK	12 inch	24W	120 V	TRIAC	2,145 lm	5CCT (2,700/3,000/4,000/5,000/6,000 K)	Black	11-13/16" x 1"	-	ETL
ASD-MPR-12D24CC-BK	12 inch	24W	120 V	TRIAC	2,333 lm	3CCT (3,000/4,000/5,000 K)	Black	11-13/16" x 1"	-	ETL
ASD-MPR-MV-12D24BK	12 inch	24W	120-277 V	TRIAC	2,069 lm	5CCT (2,700/3,000/4,000/5,000/6,000 K)	Black	11-15/16" x 1"	-	ETL
ASD-MPR-15D28WH	15 inch	28W	120-277 V	TRIAC	2,373 lm	5CCT (2,700/3,000/4,000/5,000/6,000 K)	White	14-15/16" x 1-3/16"	-	ETL
ASD-MPR-18D32WH	18 inch	32W	120-277 V	TRIAC	2,687 lm	5CCT (2,700/3,000/4,000/5,000/6,000 K)	White	17-15/16" x 1-3/16"	-	ETL
ASD-MPR-24D38WH	24 inch	38W	120-277 V	TRIAC	2,760 lm	5CCT (2,700/3,000/4,000/5,000/6,000 K)	White	24" x 1-3/16"	-	ETL
ASD-MPR-32D45WH	32 inch	45W	120-277 V	TRIAC	3,902 lm	5CCT (2,700/3,000/4,000/5,000/6,000 K)	White	31-15/16" x 1-3/16"	-	ETL

For most up-to-date spec sheets please refer to asd-lighting.com



LED SURFACE MINI PANEL

Model	Size	Power	Voltage	Dimmable	Lumens	CCT	Finish	Dimensions	Pre-installed	Certification	
MPS SQUARE											
ASD-MPS-5D10CC-WH-6PACK	5 inch	10W	120 V	TRIAC	744 lm	3CCT (3,000/4,000/5,000 K)	White	5-5/16" x 5-5/16" x 1-1/8"	-	ETL	
ASD-MPS-5D10CC-BK-6PACK	5 inch	10W	120 V	TRIAC	744 lm	3CCT (3,000/4,000/5,000 K)	Black	5-5/16" x 5-5/16" x 1-1/8"	-	ETL	
ASD-MPS-7D15CC-WH-6PACK	7 inch	15W	120 V	TRIAC	1,094 lm	3CCT (3,000/4,000/5,000 K)	White	7-1/16" x 7-1/16" x 1-1/8"	-	ETL	
ASD-MPS-7D15CC-BK-6PACK	7 inch	15W	120 V	TRIAC	1,094 lm	3CCT (3,000/4,000/5,000 K)	Black	7-1/16" x 7-1/16" x 1-1/8"	-	ETL	
ASD-MPS-9D18CC-WH	9 inch	18W	120 V	TRIAC	1,452 lm	3CCT (3,000/4,000/5,000 K)	White	8-7/8" x 8-7/8" x 1-1/8"	-	ETL	
ASD-MPS-9D18CC-WH-6PACK	9 inch	18W	120 V	TRIAC	1,452 lm	3CCT (3,000/4,000/5,000 K)	White	8-7/8" x 8-7/8" x 1-1/8"	-	ETL	
ASD-MPS-9D18CC-BK	9 inch	18W	120 V	TRIAC	1,452 lm	3CCT (3,000/4,000/5,000 K)	Black	8-7/8" x 8-7/8" x 1-1/8"	-	ETL	
ASD-MPS-9D18CC-BK-6PACK	9 inch	18W	120 V	TRIAC	1,452 lm	3CCT (3,000/4,000/5,000 K)	Black	8-7/8" x 8-7/8" x 1-1/8"	-	ETL	
ASD-MPS-12D24WH	12 inch	24W	120 V	TRIAC	1,731 lm	5CCT (2,700/3,000/4,000/5,000/6,000 K)	White	11-13/16" x 11-13/16" x 1-1/8"	-	ETL	
ASD-MPS-12D24CC-WH	12 inch	24W	120 V	TRIAC	1,824 lm	3CCT (3,000/4,000/5,000 K)	White	11-13/16" x 11-13/16" x 1-1/8"	-	ETL	
ASD-MPS-12D24BK	12 inch	24W	120 V	TRIAC	1,731 lm	5CCT (2,700/3,000/4,000/5,000/6,000 K)	Black	11-13/16" x 11-13/16" x 1-1/8"	-	ETL	
ASD-MPS-12D24CC-BK	12 inch	24W	120 V	TRIAC	1,824 lm	3CCT (3,000/4,000/5,000 K)	Black	11-13/16" x 11-13/16" x 1-1/8"	-	ETL	
MPR-MS ROUND WITH MOTION SENSOR											
ASD-MPR-7N15WH-MS	7 inch	15W	120 V	-	905 lm	5CCT (2,700/3,000/4,000/5,000/6,000 K)	White	7-1/16" x 7/8"	Motion sensor	ETL	
ASD-MPR-9N18WH-MS	9 inch	18W	120 V	-	1,333 lm	5CCT (2,700/3,000/4,000/5,000/6,000 K)	White	8-3/4" x 7/8"	Motion sensor	ETL	
ASD-MPR-9N18CC-MS-WH	9 inch	18W	120 V	-	1,430 lm	3CCT (3,000/4,000/5,000 K)	White	8-3/4" x 3/4"	Motion sensor	ETL	
MPR-EM ROUND WITH BATTERY BACK-UP											
ASD-MPR-7D15CC-EM-WH	7 inch	15W	120 V	TRIAC	1,209 lm	3CCT (3,000/4,000/5,000 K)	White	7-1/16" x 1-3/4"	6W Battery back up	ETL	
ASD-MPR-7D15WH-EM	7 inch	15W	120 V	TRIAC	1,267 lm	5CCT (2,700/3,000/4,000/5,000/6,000 K)	White	7-1/16" x 1-3/4"	6W Battery back up	ETL	
ASD-MPR-9D18CC-EM-WH	9 inch	18W	120 V	TRIAC	1,674 lm	3CCT (3,000/4,000/5,000 K)	White	8-7/8" x 1-3/4"	12W Battery back up	ETL	
ASD-MPR-9D18WH-EM	9 inch	18W	120 V	TRIAC	1,664 lm	5CCT (2,700/3,000/4,000/5,000/6,000 K)	White	8-7/8" x 1-3/4"	12W Battery back up	ETL	
ASD-SP7-MPR-WH	Sub-plate for 7"								7-1/16" x 1-3/4"	-	-
ASD-SP9-MPR-WH	Sub-plate for 9"								8-7/8" x 1-1/4"	-	-

TECHNICAL PARAMETERS:

Application area	Series	Model	Work environment	Operating temperature	Power factor	Housing	Lens	CRI
RESIDENTIAL	MP	MPR ROUND						
		ASD-MPR-5D10WH	Wet location	-4°F to 113°F (-20°C to 45°C)	> 0,9	Plastic	Acrylic	> 80
		ASD-MPR-5D10CC-WH-6PACK	Damp location	-4°F to 113°F (-20°C to 45°C)	> 0,9	Plastic	Acrylic	> 80
		ASD-MPR-5D10BK	Wet location	-4°F to 113°F (-20°C to 45°C)	> 0,9	Plastic	Acrylic	> 80
		ASD-MPR-5D10CC-BR-6PACK	Damp location	-4°F to 113°F (-20°C to 45°C)	> 0,9	Plastic	Acrylic	> 80
		ASD-MPR-5D10CC-BK-6PACK	Damp location	-4°F to 113°F (-20°C to 45°C)	> 0,9	Plastic	Acrylic	> 80
		ASD-MPR-7D15WH	Wet location	-4°F to 113°F (-20°C to 45°C)	> 0,9	Plastic	Acrylic	> 80
		ASD-MPR-7D15CC-WH	Damp location	-4°F to 113°F (-20°C to 45°C)	> 0,9	Plastic	Acrylic	> 80
		ASD-MPR-7D15CC-WH-6PACK	Damp location	-4°F to 113°F (-20°C to 45°C)	> 0,9	Plastic	Acrylic	> 80
		ASD-MPR-7D15NK	Wet location	-4°F to 113°F (-20°C to 45°C)	> 0,9	Plastic	Acrylic	> 80
		ASD-MPR-7D15CC-BR-6PACK	Damp location	-4°F to 113°F (-20°C to 45°C)	> 0,9	Plastic	Acrylic	> 80
		ASD-MPR-7D15BK	Wet location	-4°F to 113°F (-20°C to 45°C)	> 0,9	Plastic	Acrylic	> 80
		ASD-MPR-7D15CC-BK	Damp location	-4°F to 113°F (-20°C to 45°C)	> 0,9	Plastic	Acrylic	> 80
		ASD-MPR-7D15CC-BK-6PACK	Damp location	-4°F to 113°F (-20°C to 45°C)	> 0,9	Plastic	Acrylic	> 80
		ASD-MPR-9D18WH	Wet location	-4°F to 113°F (-20°C to 45°C)	> 0,9	Plastic	Acrylic	> 80
		ASD-MPR-9D18CC-WH	Damp location	-4°F to 113°F (-20°C to 45°C)	> 0,9	Plastic	Acrylic	> 80
		ASD-MPR-9D18CC-WH-6PACK	Damp location	-4°F to 113°F (-20°C to 45°C)	> 0,9	Plastic	Acrylic	> 80
		ASD-MPR-9D18NK	Wet location	-4°F to 113°F (-20°C to 45°C)	> 0,9	Plastic	Acrylic	> 80
		ASD-MPR-9D18CC-BR-6PACK	Damp location	-4°F to 113°F (-20°C to 45°C)	> 0,9	Plastic	Acrylic	> 80
		ASD-MPR-9D18BK	Wet location	-4°F to 113°F (-20°C to 45°C)	> 0,9	Plastic	Acrylic	> 80
		ASD-MPR-9D18CC-BK	Damp location	-4°F to 113°F (-20°C to 45°C)	> 0,9	Plastic	Acrylic	> 80
		ASD-MPR-9D18CC-BK-6PACK	Damp location	-4°F to 113°F (-20°C to 45°C)	> 0,9	Plastic	Acrylic	> 80
		ASD-MPR-12D24WH	Wet location	-4°F to 113°F (-20°C to 45°C)	> 0,9	Plastic	Acrylic	> 80
		ASD-MPR-12D24CC-WH	Damp location	-4°F to 113°F (-20°C to 45°C)	> 0,9	Plastic	Acrylic	> 80
		ASD-MPR-MV-12D24WH	Damp location	-4°F to 113°F (-20°C to 45°C)	> 0,9	Plastic	Acrylic	> 80
		ASD-MPR-12D24NK	Wet location	-4°F to 113°F (-20°C to 45°C)	> 0,9	Plastic	Acrylic	> 80
		ASD-MPR-12D24CC-BR	Damp location	-4°F to 113°F (-20°C to 45°C)	> 0,9	Plastic	Acrylic	> 80
		ASD-MPR-12D24BK	Wet location	-4°F to 113°F (-20°C to 45°C)	> 0,9	Plastic	Acrylic	> 80
		ASD-MPR-12D24CC-BK	Damp location	-4°F to 113°F (-20°C to 45°C)	> 0,9	Plastic	Acrylic	> 80
		ASD-MPR-MV-12D24BK	Damp location	-4°F to 113°F (-20°C to 45°C)	> 0,9	Plastic	Acrylic	> 80
		ASD-MPR-15D28WH	Wet location	-4°F to 104°F (-20°C to 40°C)	> 0,9	Plastic	Acrylic	> 90
		ASD-MPR-18D32WH	Wet location	-4°F to 104°F (-20°C to 40°C)	> 0,9	Plastic	Acrylic	> 90
		ASD-MPR-24D38WH	Wet location	-4°F to 104°F (-20°C to 40°C)	> 0,9	Plastic	Acrylic	> 90
ASD-MPR-32D45WH	Wet location	-4°F to 104°F (-20°C to 40°C)	> 0,9	Plastic	Acrylic	> 90		

For most up-to-date spec sheets please refer to asd-lighting.com



LED SURFACE MINI PANEL

Application area	Series	Model	Work environment	Operating temperature	Power factor	Housing	Lens	CRI	
RESIDENTIAL	MP	MPS SQUARE							
		ASD-MPS-5D10CC-WH-6PACK	Damp location	-4°F to 113°F (-20°C to 45°C)	> 0,9	Plastic	Acrylic	> 80	
		ASD-MPS-5D10CC-BK-6PACK	Damp location	-4°F to 113°F (-20°C to 45°C)	> 0,9	Plastic	Acrylic	> 80	
		ASD-MPS-7D15CC-WH-6PACK	Damp location	-4°F to 113°F (-20°C to 45°C)	> 0,9	Plastic	Acrylic	> 80	
		ASD-MPS-7D15CC-BK-6PACK	Damp location	-4°F to 113°F (-20°C to 45°C)	> 0,9	Plastic	Acrylic	> 80	
		ASD-MPS-9D18CC-WH	Damp location	-4°F to 113°F (-20°C to 45°C)	> 0,9	Plastic	Acrylic	> 80	
		ASD-MPS-9D18CC-WH-6PACK	Damp location	-4°F to 113°F (-20°C to 45°C)	> 0,9	Plastic	Acrylic	> 80	
		ASD-MPS-9D18CC-BK	Damp location	-4°F to 113°F (-20°C to 45°C)	> 0,9	Plastic	Acrylic	> 80	
		ASD-MPS-9D18CC-BK-6PACK	Damp location	-4°F to 113°F (-20°C to 45°C)	> 0,9	Plastic	Acrylic	> 80	
		ASD-MPS-12D24WH	Damp location	-4°F to 113°F (-20°C to 45°C)	> 0,9	Plastic	Acrylic	> 80	
		ASD-MPS-12D24CC-WH	Damp location	-4°F to 113°F (-20°C to 45°C)	> 0,9	Plastic	Acrylic	> 80	
		ASD-MPS-12D24BK	Damp location	-4°F to 113°F (-20°C to 45°C)	> 0,9	Plastic	Acrylic	> 80	
		ASD-MPS-12D24CC-BK	Damp location	-4°F to 113°F (-20°C to 45°C)	> 0,9	Plastic	Acrylic	> 80	
		MPR-MS ROUND WITH MOTION SENSOR							
		ASD-MPR-7N15WH-MS	Damp location	-4°F to 104°F (-20°C to 40°C)	> 0,9	Plastic	Acrylic	> 80	
		ASD-MPR-9N18WH-MS	Damp location	-4°F to 104°F (-20°C to 40°C)	> 0,9	Plastic	Acrylic	> 80	
		ASD-MPR-9N18CC-MS-WH	Damp location	-4°F to 113°F (-20°C to 45°C)	> 0,9	Plastic	Acrylic	> 80	
		MPR-EM ROUND WITH BATTERY BACK-UP							
		ASD-MPR-7D15CC-EM-WH	Damp location	-4°F to 113°F (-20°C to 45°C)	> 0,9	Plastic	Acrylic	> 80	
		ASD-MPR-7D15WH-EM	Damp location	-4°F to 113°F (-20°C to 45°C)	> 0,9	Plastic	Acrylic	> 80	
ASD-MPR-9D18CC-EM-WH	Damp location	-4°F to 113°F (-20°C to 45°C)	> 0,9	Plastic	Acrylic	> 80			
ASD-MPR-9D18WH-EM	Damp location	-4°F to 113°F (-20°C to 45°C)	> 0,9	Plastic	Acrylic	> 80			

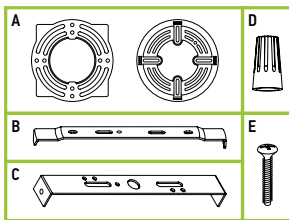
DIMMING COMPATIBLE CONTROLS:

Brand	Lutron		Leviton		Maxxima	for MV and 15-32" models		
	Lutron	Leviton	Leviton	Maxxima	Lutron	Leviton	Calibration	
Models	MACL-153MLH-WH	DVCL-153PR	R02-DW6HD-2RW	66721LW	MEW-DM600	MACL-153MLH-WH	MRF2-6CL	RHCL453PNICCV4
	STCL-153PH-WH	AYCL-153P	R00-RNL06-0TW	DSL06		STCL-153PH-WH	DDMX1	
	PD-6WCL-WH-R	P-PKG1W	R68-06674-POT			P-PKG1W-WH-P		
	TGCL-153PH-LA	SCL-153P	6674-POW			R11-DSL06-1TW		

* The list of dimmers is relevant for models without a motion sensor.

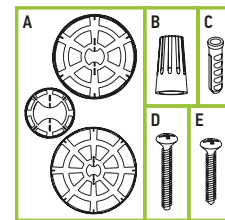
PACKAGE CONTENTS FOR ROUND 5-12" MODELS

Description	Quantity
LED Round Surface Mini Panel	1
Mounting plate (A) for regular models	1
Bracket (B) for MS model	1
Bracket (C) for EM models	1
Wire nut (D)	3
Screw (E)	2
Box	1



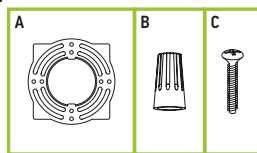
PACKAGE CONTENTS FOR ROUND 15-32" MODELS

Description	Quantity
LED Round Surface Mini Panel	1
Mounting plate (A)	1
Wire nut (B)	2
Anchor (C)	4 for 15-18"; 6 for 24"; 8 for 32"
Screw (D)	2
Self-taping screw (E)	4 for 15-18"; 6 for 24"; 8 for 32"
Box	1



PACKAGE CONTENTS FOR SQUARE MODELS:

Description	Quantity
LED Square Surface Mini Panel	1
Mounting plate (A)	1
Wire nut (B)	3
Screw (C)	2
Box	1



For most up-to-date spec sheets please refer to asd-lighting.com

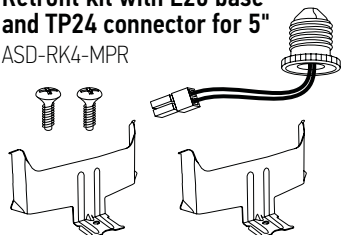


LED SURFACE MINI PANEL

ACCESSORIES (sold separately):

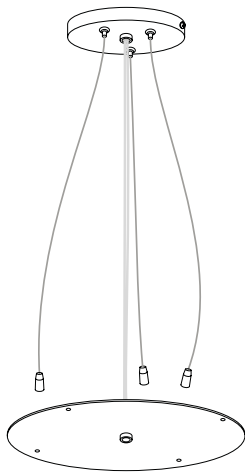
Retrofit kit with E26 base and TP24 connector for 5"

ASD-RK4-MPR



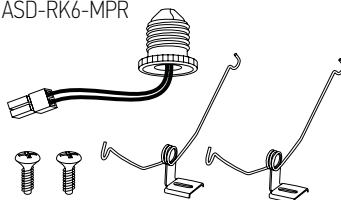
Hanging mounting set

ASD-HS15-MPR



Retrofit kit with E26 base and TP24 connector for 7", 9", 12"

ASD-RK6-MPR



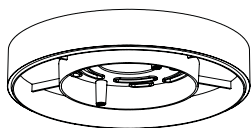
Sub-plate

for 7"

ASD-SP7-MPR

for 9"

ASD-SP9-MPR



BUILT-IN MOTION SENSOR INFORMATION

Sensor has two selectable modes:

Day mode:

The light is ON only when motion detected.

The light sensing option is OFF.

Detection range: 9.8 - 16.4 ft

Time: 45 sec.

Night Mode:

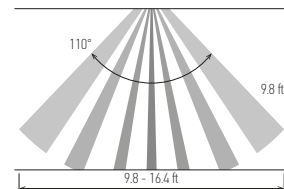
The light is ON when illumination is < 70 lux

(6.5 fc) and motion detected.

Detection range: 9.8-16.4 ft

Time: 45 sec.

If illumination is > 200 lux (18.6 fc) the light is always OFF.



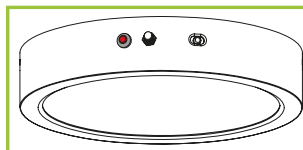
⚠ RF interference may affect the operation of this sensor.

BUILT-IN BATTERY BACK-UP INFORMATION

Specifications

Input voltage	100-277 V 50/60 Hz	
Voltage	20-36 Vdc	20-36 Vdc
Input current	max 110 mA	
Output current	200 mA	360 mA
Input power rating	max 5.0W	
Output power	6W	12W
Lumens	400 lm	600 lm
Emergency time	min 90 minutes	
Indicator light	Illuminated test switch	
Battery	Li-ion battery - 11.1 V/2200 mAh	
Charging current	440 mA	
Charging time	8 hours	
Temperature rating (Ambient)	32°F to 113°F (0°C to 45°C)	
Warranty	5 years	

STANDARD OPERATION DISPLAY STATUS:



Button	Remarks
	Blinking Operating condition
	OFF Emergency mode Test switch

- Indicator light is blinking: battery back-up recharging.
- Indicator light is OFF: battery back-up is full charge; battery back-up is working.
- In order to test the battery back-up press the test switch one time. To turn off the emergency power state press test switch one more time.

ACCESSORY COMPATIBILITY LIST:

Models	Accessories	Retrofit kit with E26 base and TP24 connector for 5"	Retrofit kit with E26 base and TP24 connector for 7", 9", 12"	Sub-plate for 7"	Sub-plate for 9"	Hanging mounting set
		ASD-RK4-MPR	ASD-RK6-MPR	ASD-SP7-MPR	ASD-SP9-MPR	ASD-HS15-MPR
ASD-MPR	5"	•				
	7"		•	•		
	9"		•		•	
	12"		•			
	15"					•
	18"					•
	32"					
ASD-MPS	5"	•				
	7"		•			
	9"		•			
	12"		•			
ASD-MPR-MS	7"		•			
	9"		•			
ASD-MPR-EM	7"					
	9"					

For most up-to-date spec sheets please refer to asd-lighting.com



LED SURFACE MINI PANEL

INSTALLATION GUIDE

IMPORTANT SAFETY INFORMATION:

Please read all the instructions below before installation!

- ▶ Make sure that the supply voltage corresponds to the rated product voltage.
- ▶ The product must be installed by a qualified electrician in accordance with the National Electrical Code and corresponding local codes.
- ▶ If the product is damaged, do not use it.

⚠ WARNING

Risk of personal injury – read and follow all warnings and installation instructions. Keep or give to the owner for future reference.

Risk of cuts: Wear gloves to prevent cuts or abrasions when removing from carton, handling, installing, and maintaining this product.

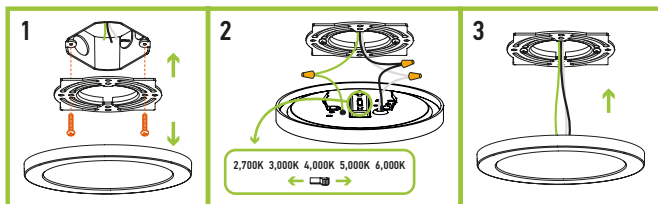
Risk of electric shock: This product must be installed in accordance with the applicable installation code by a person familiar with the construction and operation of the product and the hazards involved.

Risk of Fire: Minimum 194°F supply conductors. Consult a qualified electrician to ensure correct branch circuit conductor.

ASD® assumes no responsibility for claims arising out of improper or careless installation or handling of this product.

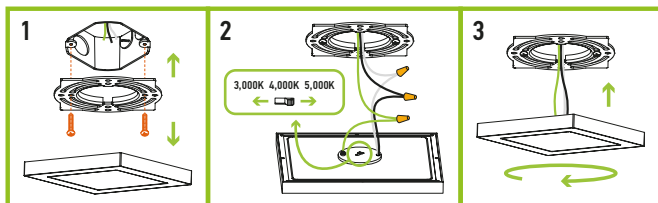
ROUND MODELS INSTALLATION:

1. Remove the mounting plate from the fixture and attach it to the existing outlet box in the ceiling using two screws.
2. Choose preferred color temperature by adjusting the switch. Connect the wires: Black to Black, White to White, Green to Green. Secure the connection with wire nuts.
3. Insert the fixture to the bracket until it clicks.



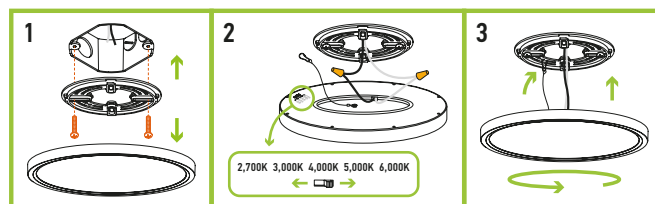
SQUARE MODELS INSTALLATION:

1. Remove the mounting plate from the fixture and attach it to the existing outlet box in the ceiling using two screws.
2. Choose preferred color temperature by adjusting the switch. Connect the wires: Black to Black, White to White, Green to Green. Secure the connection with wire nuts.
3. Insert the fixture to the mounting plate until it clicks.



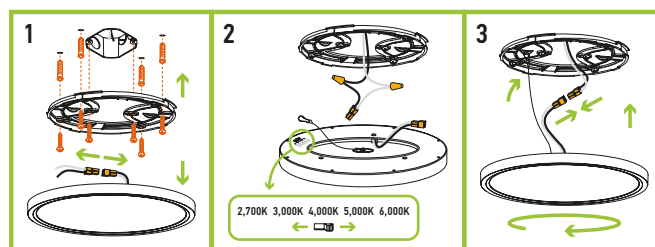
MV MODELS INSTALLATION:

1. Remove the mounting plate from the fixture and attach it to the existing outlet box in the ceiling using two screws.
2. Choose preferred color temperature by adjusting the switch. Connect the wires: Black to Black, White to White. Secure the connection with wire nuts.
3. Hang the safety hook on the mounting plate. Insert the lamp to the bracket and rotate the fixture base counter clockwise until it click.



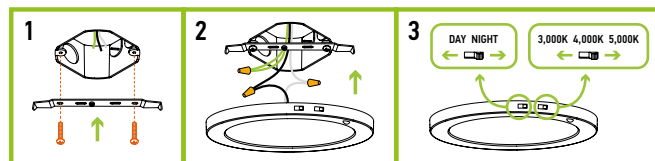
15-32" MODELS INSTALLATION:

1. Disconnect the orange pluggable connector. Remove the mounting plate from the fixture and attach it to the existing outlet box in the ceiling using two mounting screws. Drill four 5/16" size holes on the ceiling for 15" and 18" models, six holes for 24" model, eight holes for 32" model, which will match with the holes on the mounting bracket. Insert drywall anchors into each drilled mounting hole.
2. Choose preferred color temperature by adjusting the switch. Connect the wires: Black to Black, White to White. Secure the connection with wire nuts.
3. Hang the safety hook on the mounting plate. Connect the orange pluggable connector on the lamp base to the pluggable connector that is already plugged into the supply wires. Put all wires into the outlet box. Insert the lamp to the bracket and rotate the fixture base clockwise until it click.



MOTION SENSOR MODELS INSTALLATION:

1. Attach the bracket to the existing outlet box in the ceiling using two screws.
2. Connect the wires: Black to Black, White to White, Green to Green. Secure the connection with wire nuts. Insert the fixture to the bracket until it clicks.
3. Choose preferred color temperature and motion sensor setting by adjusting switch position on the side of the fixture.



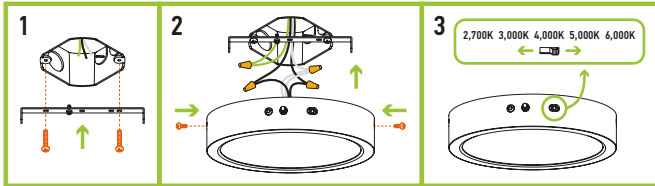
For most up-to-date spec sheets please refer to asd-lighting.com



LED SURFACE MINI PANEL

BATTERY BACK-UP MODELS INSTALLATION:

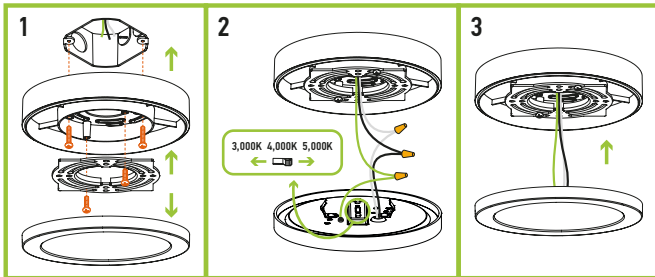
1. Attach the bracket to the existing outlet box in the ceiling using two screws
2. Connect the wires: Black to Black, White to White, Green to Green. Secure the connection with wire nuts. Insert the fixture into the bracket and fix it with two fixture screws on both sides of the lamp.
3. Choose needed color temperature by adjusting switch position on the side of the fixture.



SUB-PLATE INSTALLATION

ASD-SP7-MPR ASD-SP9-MPR sold separately

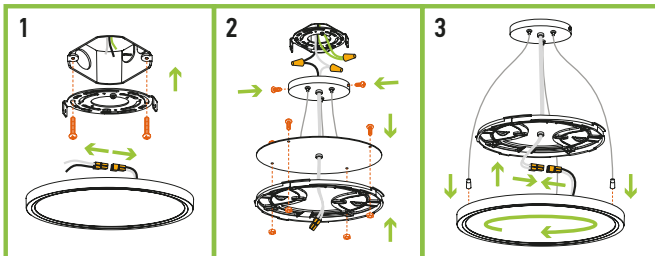
1. Place the subplate on the outlet box in the ceiling and fix it using two screws. Remove the mounting plate from the LED fixture and attach it to the sub-plate with another two screws.
2. Choose preferred color temperature by adjusting the switch. Connect the wires: Black to Black, White to White, Green to Green. Secure the connection with wire nuts.
3. Insert the fixture in to the mounting plate until it clicks.



PENDANT INSTALLATION

ASD-HS15-MPR sold separately

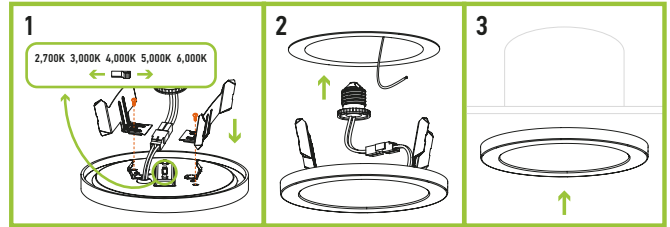
1. Disconnect the orange pluggable connector. Attach the mounting bracket to the outlet using the slotted holes on the mounting bracket and the mounting screws.
2. Connect the power supply wires to the fixture lead wires by connecting the black to the extended black wire, and the white to the extended white wire using nuts. Connect the ground wire to the house ground wire by fixed on the mounting bracket. Put all wiring back into the outlet box. Place the ceiling pan over outlet box, insert the two fixture screws, and tighten to secure the ceiling pan to the ceiling. Use the hex nut and panel screw to tighten the panel and bracket.
3. Connect the orange pluggable connector on the lamp base to the pluggable connector that is already plugged into the supply wires. Rotate the pendant holder clockwise until it is tightened into the fixture base.



RETROFIT KIT FOR 5" MODELS INSTALLATION

ASD-RK4-MPR sold separately

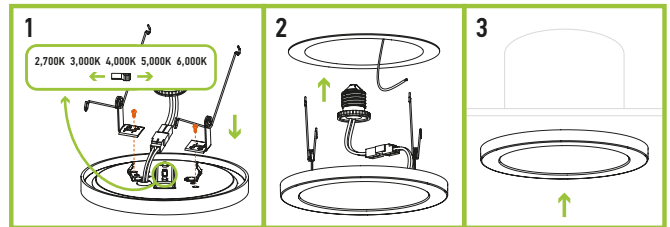
1. Attach spring-loaded clips to the 4" retrofit holes using short screws. Join the TP24 connector to the fixture wires and connect it to the E26 socket adapter. Choose preferred color temperature by adjusting the switch.
2. Screw the E26 socket adapter into the socket in the housing.
3. Press the fixture into the housing.



RETROFIT KIT FOR 7", 9", 12" MODELS

ASD-RK6-MPR sold separately

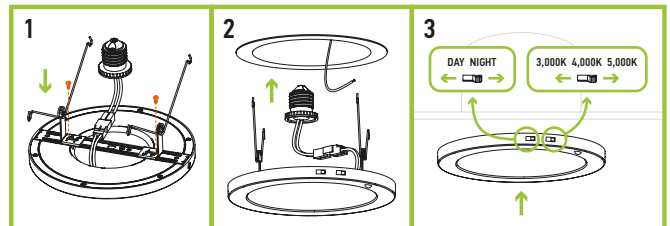
1. Attach spring-loaded clips to the 6" retrofit holes using short screws. Join the TP24 connector to the fixture wires and connect it to the E26 socket adapter. Choose preferred color temperature by adjusting the switch.
2. Screw the E26 socket adapter into the socket in the housing.
3. Press the fixture into the housing.



RETROFIT KIT FOR MOTION SENSOR MODEL

ASD-RK6-MPR sold separately

1. Fix the bracket to the fixture until it clicks. Attach spring-loaded clips to the bracket using short screws. Join the TP24 connector to the fixture wires and connect it to the E26 socket adapter.
2. Screw the E26 socket adapter into the socket in the housing.
3. Press the fixture into the housing. Choose needed color temperature and motion sensor setting by adjusting switch position on the side of the fixture.



For most up-to-date spec sheets please refer to asd-lighting.com



LED SURFACE MINI PANEL

TRANSPORTATION DATA

Application area	Series	Model	Product dimensions	Weight	UPC	Pcs. (pack) per carton	Carton size	Carton weight	GTIN 14		
RESIDENTIAL	MP	MPR ROUND									
		ASD-MPR-5D10WH	5-5/16" x 1"	0.2 lbs (0.1 kg)	810128116299	6	10" x 6.7" x 6.1"	1.7 lbs	10810128116296		
		ASD-MPR-5D10CC-WH-6PACK	5-5/16" x 1"	3.4 lbs (1.5 kg)	810050737654	12 (2)	15.2" x 7.9" x 6.9"	8.2 lbs	10810050737651		
		ASD-MPR-5D10BK	5-5/16" x 1"	0.2 lbs (0.1 kg)	810128116282	6	10" x 6.7" x 6.1"	1.7 lbs	10810128116289		
		ASD-MPR-5D10CC-BR-6PACK	5-5/16" x 1"	3.4 lbs (1.5 kg)	810128111720	12 (2)	15.2" x 7.9" x 6.9"	8.2 lbs	10810128111727		
		ASD-MPR-5D10CC-BK-6PACK	5-5/16" x 1"	3.4 lbs (1.5 kg)	810128110389	12 (2)	15.2" x 7.9" x 6.9"	8.2 lbs	10810128110386		
		ASD-MPR-7D15WH	7-1/16" x 1"	0.8 lbs (0.4 kg)	810128115117	6	10" x 8.5" x 7.9"	5.3 lbs	10810128115114		
		ASD-MPR-7D15CC-WH	7-1/16" x 1"	0.8 lbs (0.4 kg)	810050736275	12	16.5" x 10" x 7.9"	12.6 lbs	30810050736276		
		ASD-MPR-7D15CC-WH-6PACK	7-1/16" x 1"	4.9 lbs (2.2 kg)	810050737661	12 (2)	15.6" x 9.7" x 8.7"	12.2 lbs	10810050737668		
		ASD-MPR-7D15NK	7-1/16" x 1"	0.8 lbs (0.4 kg)	810128118958	6	10" x 8.5" x 7.9"	5.3 lbs	10810128118955		
		ASD-MPR-7D15CC-BR-6PACK	7-1/16" x 1"	4.9 lbs (2.2 kg)	810128111744	12 (2)	15.6" x 9.7" x 8.7"	12.2 lbs	10810128111741		
		ASD-MPR-7D15BK	7-1/16" x 1"	0.8 lbs (0.4 kg)	810128117111	6	10" x 8.5" x 7.9"	5.3 lbs	10810128117118		
		ASD-MPR-7D15CC-BK	7-1/16" x 1"	0.8 lbs (0.4 kg)	810050736732	12	16.5" x 10" x 7.9"	12.6 lbs	30810050736733		
		ASD-MPR-7D15CC-BK-6PACK	7-1/16" x 1"	4.9 lbs (2.2 kg)	810050737029	12 (2)	15.6" x 9.7" x 8.7"	12.2 lbs	10810050737026		
		ASD-MPR-9D18WH	8-7/8" x 1-3/4"	0.9 lbs (0.4 kg)	810128117142	6	10.2" x 10" x 9.7"	7.2 lbs	10810128117149		
		ASD-MPR-9D18CC-WH	8-7/8" x 1"	1.1 lbs (0.5 kg)	810050734622	12	19.7" x 10.2" x 9.7"	17.2 lbs	30810050734623		
		ASD-MPR-9D18CC-WH-6PACK	8-7/8" x 1"	6.7 lbs (3 kg)	810050737678	12 (2)	15.6" x 11.4" x 10"	15.7 lbs	10810050737675		
		ASD-MPR-9D18NK	8-7/8" x 1-3/4"	0.9 lbs (0.4 kg)	810128118965	6	10.2" x 10" x 9.7"	7.2 lbs	10810128118962		
		ASD-MPR-9D18CC-BR-6PACK	8-7/8" x 1"	6.7 lbs (3 kg)	810128111768	12 (2)	15.6" x 11.4" x 10"	15.7 lbs	10810128111765		
		ASD-MPR-9D18BK	8-7/8" x 1-3/4"	0.9 lbs (0.4 kg)	810128117135	6	10.2" x 10" x 9.7"	7.2 lbs	10810128117132		
		ASD-MPR-9D18CC-BK	8-7/8" x 1"	1.1 lbs (0.5 kg)	810050736749	12	19.7" x 10.2" x 9.7"	17.2 lbs	30810050736740		
		ASD-MPR-9D18CC-BK-6PACK	8-7/8" x 1"	6.7 lbs (3 kg)	819201026753	12 (2)	15.6" x 11.4" x 10"	15.7 lbs	10819201026750		
		ASD-MPR-12D24WH	11-13/16" x 1"	2.2 lbs (1 kg)	810128117166	4	13.2" x 6.9" x 12.6"	10.5 lbs	10810128117163		
		ASD-MPR-12D24CC-WH	11-13/16" x 1"	2.2 lbs (1 kg)	810050736299	4	13.2" x 6.9" x 12.6"	10.5 lbs	30810050736290		
		ASD-MPR-MV-12D24WH	11-15/16" x 1"	1.5 lbs (0.7 kg)	810128117722	4	13.2" x 10.2" x 13.4"	8.3 lbs	10810128117729		
		ASD-MPR-12D24NK	11-13/16" x 1"	2.2 lbs (1 kg)	810128118972	4	13.2" x 6.9" x 12.6"	10.5 lbs	10810128118979		
		ASD-MPR-12D24CC-BR	11-13/16" x 1"	2.2 lbs (1 kg)	810128111836	4	13.2" x 6.9" x 12.6"	10.5 lbs	10810128111833		
		ASD-MPR-12D24BK	11-13/16" x 1"	2.2 lbs (1 kg)	810128117159	4	13.2" x 6.9" x 12.6"	10.5 lbs	10810128117156		
		ASD-MPR-12D24CC-BK	11-13/16" x 1"	2.2 lbs (1 kg)	819201026760	4	13.2" x 6.9" x 12.6"	10.5 lbs	10819201026767		
		ASD-MPR-MV-12D24BK	11-15/16" x 1"	1.5 lbs (0.7 kg)	810128117715	4	13.2" x 6.7" x 13.4"	8.3 lbs	10810128117712		
		ASD-MPR-15D28WH	14-15/16" x 1-3/16"	2.7 lbs (1.2 kg)	810128117128	2	17.7" x 5.1" x 18.1"	7.9 lbs	10810128117125		
		ASD-MPR-18D32WH	17-15/16" x 1-3/16"	3.5 lbs (1.6 kg)	810128117296	2	20.9" x 5.1" x 21.3"	10.4 lbs	10810128117293		
		ASD-MPR-24D38WH	24" x 1-3/16"	6.6 lbs (3 kg)	810128117364	2	26.8" x 6.4" x 27.2"	18.1 lbs	10810128117361		
		ASD-MPR-32D45WH	31-15/16" x 1-3/16"	10.8 lbs (4.9 kg)	810128117371	2	35.2" x 6.7" x 35.6"	28.7 lbs	10810128117378		
		RESIDENTIAL	MP	MPS SQUARE							
				ASD-MPS-5D10CC-WH-6PACK	5-5/16" x 5-5/16" x 1-1/8"	3.6 lbs (1.6 kg)	819201026746	12 (2)	15" x 8.3" x 6.9"	9.5 lbs	10819201026743
ASD-MPS-5D10CC-BK-6PACK	5-5/16" x 5-5/16" x 1-1/8"			3.6 lbs (1.6 kg)	810128110396	12 (2)	15" x 8.3" x 6.9"	9.5 lbs	10810128110393		
ASD-MPS-7D15CC-WH-6PACK	7-1/16" x 7-1/16" x 1-1/8"			5.4 lbs (2.4 kg)	810128110082	12 (2)	15.8" x 9.7" x 8.7"	13.1 lbs	10810128110089		
ASD-MPS-7D15CC-BK-6PACK	7-1/16" x 7-1/16" x 1-1/8"			5.4 lbs (2.4 kg)	819201029846	12 (2)	15.8" x 9.7" x 8.7"	13.1 lbs	10819201029843		
ASD-MPS-9D18CC-WH	8-7/8" x 8-7/8" x 1-1/8"			1.4 lbs (0.6 kg)	810050737630	12	19.7" x 10.2" x 9.7"	20.6 lbs	10810050737637		
ASD-MPS-9D18CC-WH-6PACK	8-7/8" x 8-7/8" x 1-1/8"			7.6 lbs (3.4 kg)	810050737647	12 (2)	15.8" x 11.4" x 10.4"	19 lbs	10810050737644		
ASD-MPS-9D18CC-BK	8-7/8" x 8-7/8" x 1-1/8"			1.4 lbs (0.6 kg)	810050738873	12	19.7" x 10.2" x 9.7"	20.6 lbs	10810050738870		
ASD-MPS-9D18CC-BK-6PACK	8-7/8" x 8-7/8" x 1-1/8"			7.6 lbs (3.4 kg)	819201029211	12 (2)	15.8" x 11.4" x 10.4"	19 lbs	10819201029218		
ASD-MPS-12D24WH	11-13/16" x 11-13/16" x 1-1/8"			4.5 lbs (2 kg)	810128118125	4	13.2" x 6.9" x 12.6"	10.8 lbs	10810128118122		
ASD-MPS-12D24CC-WH	11-13/16" x 11-13/16" x 1-1/8"			4.5 lbs (2 kg)	819201024513	4	13.2" x 6.9" x 12.6"	10.8 lbs	10819201024510		
ASD-MPS-12D24BK	11-13/16" x 11-13/16" x 1-1/8"			4.5 lbs (2 kg)	810128118989	4	13.2" x 6.9" x 12.6"	10.8 lbs	10810128118986		
ASD-MPS-12D24CC-BK	11-13/16" x 11-13/16" x 1-1/8"			4.5 lbs (2 kg)	819201026876	4	13.2" x 6.9" x 12.6"	10.8 lbs	10819201026873		
RESIDENTIAL	MP			MPR-MS ROUND WITH MOTION SENSOR							
				ASD-MPR-7N15WH-MS	7-1/16" x 7/8"	0.7 lbs (0.3 kg)	810128118996	12	15.6" x 8.7" x 7.9"	11.3 lbs	10810128118993
				ASD-MPR-9N18WH-MS	8-3/4" x 7/8"	0.9 lbs (0.4 kg)	810128119009	12	19.7" x 8.7" x 9.8"	13.9 lbs	10810128119006
ASD-MPR-9N18CC-MS-WH	8-3/4" x 3/4"			1 lbs (0.5 kg)	810050734493	12	19.7" x 8.7" x 9.7"	16.3 lbs	30810050734494		
RESIDENTIAL	MP			MPR-EM ROUND WITH BATTERY BACK-UP							
				ASD-MPR-7D15CC-EM-WH	7-1/16" x 1-3/4"	1.6 lbs (0.7 kg)	810050738040	12	18.7" x 17.7" x 9.1"	22.6 lbs	10810050738047
				ASD-MPR-7D15WH-EM	7-1/16" x 1-3/4"	1.6 lbs (0.7 kg)	810128116268	12	18.7" x 17.7" x 9.1"	22.6 lbs	10810128116265
				ASD-MPR-9D18CC-EM-WH	8-7/8" x 1-3/4"	2.1 lbs (1 kg)	810050738057	12	21.3" x 18.9" x 10.8"	33 lbs	10810050738054
ASD-MPR-9D18WH-EM	8-7/8" x 1-3/4"			2.1 lbs (1 kg)	810128116275	12	21.3" x 18.9" x 10.8"	33 lbs	10810128116272		

For most up-to-date spec sheets please refer to asd-lighting.com



LED SURFACE MINI PANEL

ACCESSORIES:

Model	Description	UPC	Pcs. in middle box	Middle box size	Middle box weight	GTIN 14 in middle box	Pcs. per carton	Carton size	Carton weight	GTIN 14 in carton
ASD-RK4-MPR	Retrofit kit with E26 base and TP24 connector for 5"	810050731089	12	7.1" x 5.1" x 5.7"	1.3 lbs	10810050731086	48	11" x 7.7" x 12.4"	6 lbs	20810050731083
ASD-RK6-MPR	Retrofit kit with E26 base and TP24 connector for 7", 9", 12"	810050731096	12	7.1" x 5.1" x 5.7"	1.4 lbs	10810050731093	48	11" x 7.7" x 12.4"	6.3 lbs	20810050731090
ASD-HS15-MPR-WH	Hanging mounting set	810128119016	-	-	-	-	4	12.6" x 12.6" x 13"	1.8 lbs	10810128119013
ASD-SP7-MPR-WH	Sub-plate for 7"	810050738064	-	-	-	-	12	14.8" x 7.9" x 7.7"	5.1 lbs	10810050738061
ASD-SP9-MPR-WH	Sub-plate for 9"	810128118217	-	-	-	-	12	18.3" x 7.9" x 9.7"	6.4 lbs	10810128118214

For most up-to-date spec sheets please refer to asd-lighting.com