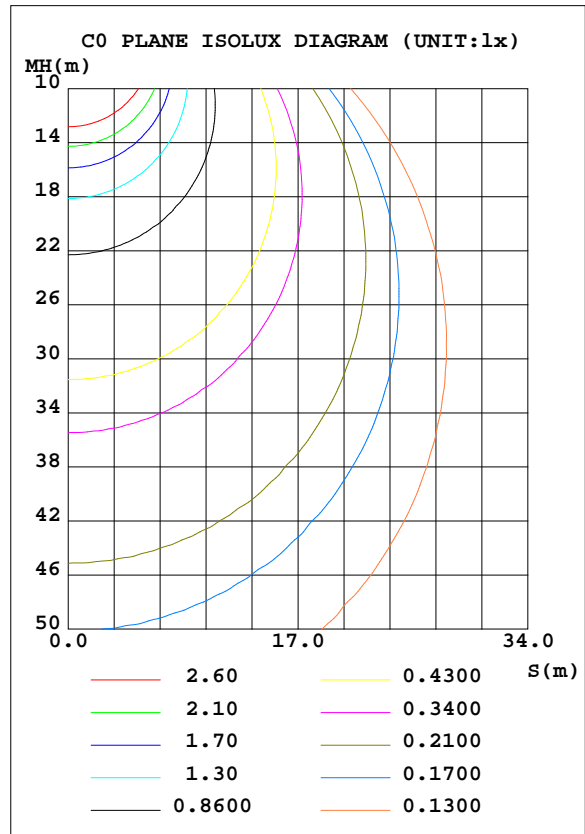
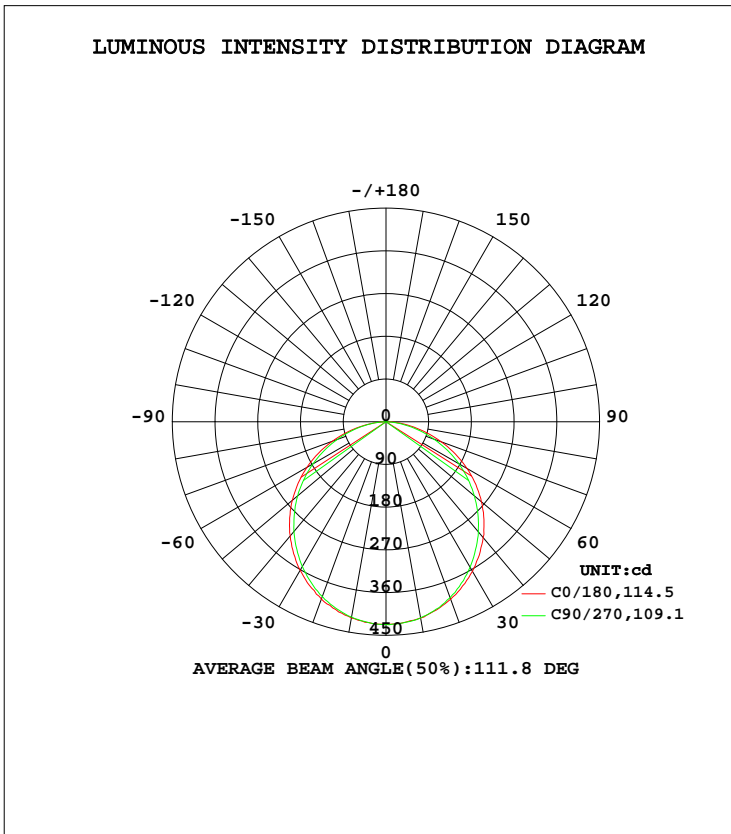


LUMINAIRE PHOTOMETRIC TEST REPORT

Test:U:120.06V I:0.1503A P:16.980W PF:0.9410 Freq:60.00Hz Lamp Flux:1210.34x1 lm		
NAME: ASD-UCS-32D16CC	TYPE: N/A	WEIGHT: N/A
SPEC.: N/A	DIM.: N/A	SERIAL No.: N/A
MFR.: ASD Lighting Corp	SUR.: N/A	Shielding Angle: N/A

DATA OF LAMP		PHOTOMETRIC DATA			
MODEL	ASD-UCS-32D16CC	Imax(cd)	427.5	S/MH(C0/180)	1.27
NOMINAL POWER(W)	16	LOR(%)	100.0	S/MH(C90/270)	1.24
RATED VOLTAGE(V)	120	TOTAL FLUX(lm)	1210.3	η UP, DN(C0-180)	0.1,50.4
NOMINAL FLUX(lm)	1210.34	CIE CLASS	DIRECT	η UP, DN(C180-360)	0.0,49.5
LAMPS INSIDE	1	η up(%)	0.1	CIBSE SHR NOM	1.25
TEST VOLTAGE(V)	120	η down(%)	99.9	CIBSE SHR MAX	1.35



C Range: 0 - 360DEG
 C Interval: 22.5DEG
 Test Speed: HIGH
 Temperature:24.9DEG
 Operators:Water
 Test Date:2023-09-08

γ Range: 0 - 180DEG
 γ Interval: 1.0DEG
 Test System:EVERFINE GO-R5000_V2 SYSTEM V2.00.446
 Humidity:50%
 Test Distance:2.513m [K=1.0000]
 Remarks: Model No: UCL-31B-32G

ZONAL FLUX DIAGRAM

ZONAL FLUX DIAGRAM:

γ	C0	C45	C90	C135	C180	C225	C270	C315	γ	Φ zone	Φ total	%lum, lamp
10	419.7	417.9	417.8	420.0	419.7	419.7	419.5	417.7	0- 10	40.37	40.37	3.34,3.34
20	397.7	394.1	392.0	398.0	397.9	395.0	394.7	392.6	10- 20	115.4	155.7	12.9,12.9
30	361.4	355.3	352.5	362.3	364.2	357.6	354.0	353.9	20- 30	174.2	329.9	27.3,27.3
40	314.0	307.2	301.7	314.5	318.5	310.0	302.7	303.9	30- 40	209.3	539.3	44.6,44.6
50	257.5	249.7	242.7	257.5	262.3	251.6	243.3	244.7	40- 50	216.8	756.0	62.5,62.5
60	192.5	184.4	177.6	192.6	197.0	186.3	177.7	178.3	50- 60	196.0	952.0	78.7,78.7
70	120.4	114.9	109.4	122.4	124.1	115.3	107.9	107.4	60- 70	149.3	1101	91,91
80	49.31	47.27	44.66	54.46	53.28	47.48	42.76	40.83	70- 80	85.12	1186	98,98
90	0.1188	0.0669	0.0629	2.944	1.087	0.0301	0.0208	0.0206	80- 90	22.54	1209	99.9,99.9
100	0.1010	0.1187	0.1103	0.1128	0.0440	0.0447	0.0424	0.0428	90-100	0.1032	1209	99.9,99.9
110	0.1262	0.1331	0.1322	0.1296	0.0720	0.0737	0.0705	0.0700	100-110	0.0932	1209	99.9,99.9
120	0.1720	0.1780	0.1792	0.1743	0.1110	0.1096	0.1038	0.1051	110-120	0.1184	1209	99.9,99.9
130	0.2508	0.2582	0.2711	0.2527	0.1585	0.1570	0.1475	0.1517	120-130	0.1538	1209	99.9,99.9
140	0.3919	0.4281	0.4324	0.3951	0.2084	0.2096	0.2052	0.2090	130-140	0.1940	1210	99.9,99.9
150	0.5482	0.6211	0.6444	0.5890	0.2554	0.2691	0.2735	0.2710	140-150	0.2342	1210	100,100
160	0.6883	0.7336	0.7520	0.7236	0.3541	0.3454	0.3373	0.3431	150-160	0.2256	1210	100,100
170	0.6690	0.6830	0.6814	0.6927	0.4363	0.4202	0.3898	0.3919	160-170	0.1556	1210	100,100
180	0.5672	0.5308	0.5086	0.5681	0.5697	0.5555	0.5224	0.5458	170-180	0.0521	1210	100,100
DEG	LUMINOUS INTENSITY:cd									UNIT:lm		

Conical surface Flux(90deg): 648.5 lm

%lum = 53.6%
%lamp = 53.6%

Conical surface Flux(120deg): 952.01 lm

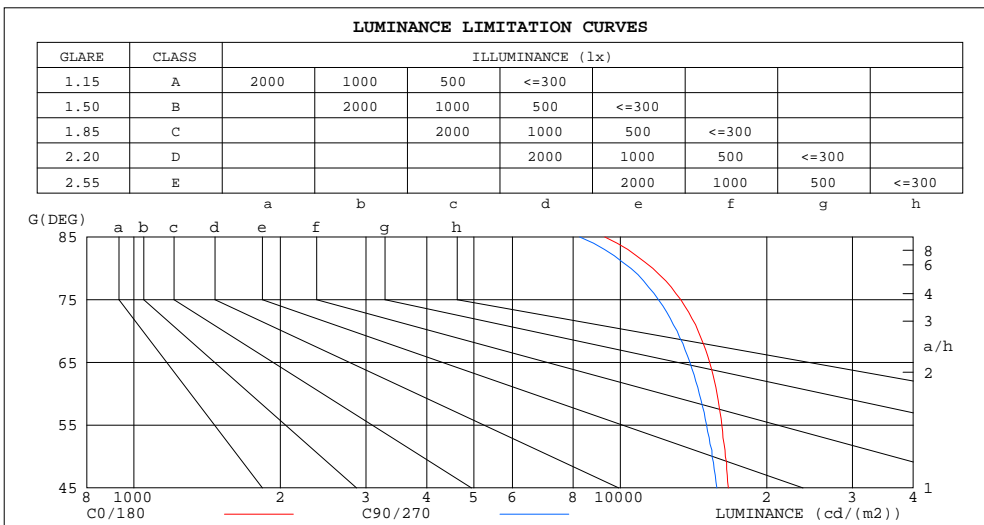
%lum = 78.7%
%lamp = 78.7%

C Range: 0 - 360DEG
C Interval: 22.5DEG
Test Speed: HIGH
Temperature:24.9DEG
Operators:Water
Test Date:2023-09-08

γ Range: 0 - 180DEG
γ Interval: 1.0DEG
Test System:EVERFINE GO-R5000_V2 SYSTEM V2.00.446
Humidity:50%
Test Distance:2.513m [K=1.0000]
Remarks: Model No: UCL-31B-32G

LUMINANCE LIMITATION CURVES

Test:U:120.06V I:0.1503A P:16.980W PF:0.9410 Freq:60.00Hz Lamp Flux:1210.34x1 lm		
NAME: ASD-UCS-32D16CC	TYPE: N/A	WEIGHT: N/A
SPEC.: N/A	DIM.: N/A	SERIAL No.: N/A
MFR.: ASD Lighting Corp	SUR.: N/A	Shielding Angle: N/A



LUMINANCE cd/(m2)		
G (DEG)	C0/180	C90/270
85	9296	8248
80	11659	10518
75	13313	11978
70	14452	13087
65	15268	13902
60	15806	14528
55	16173	15043
50	16446	15443
45	16680	15788

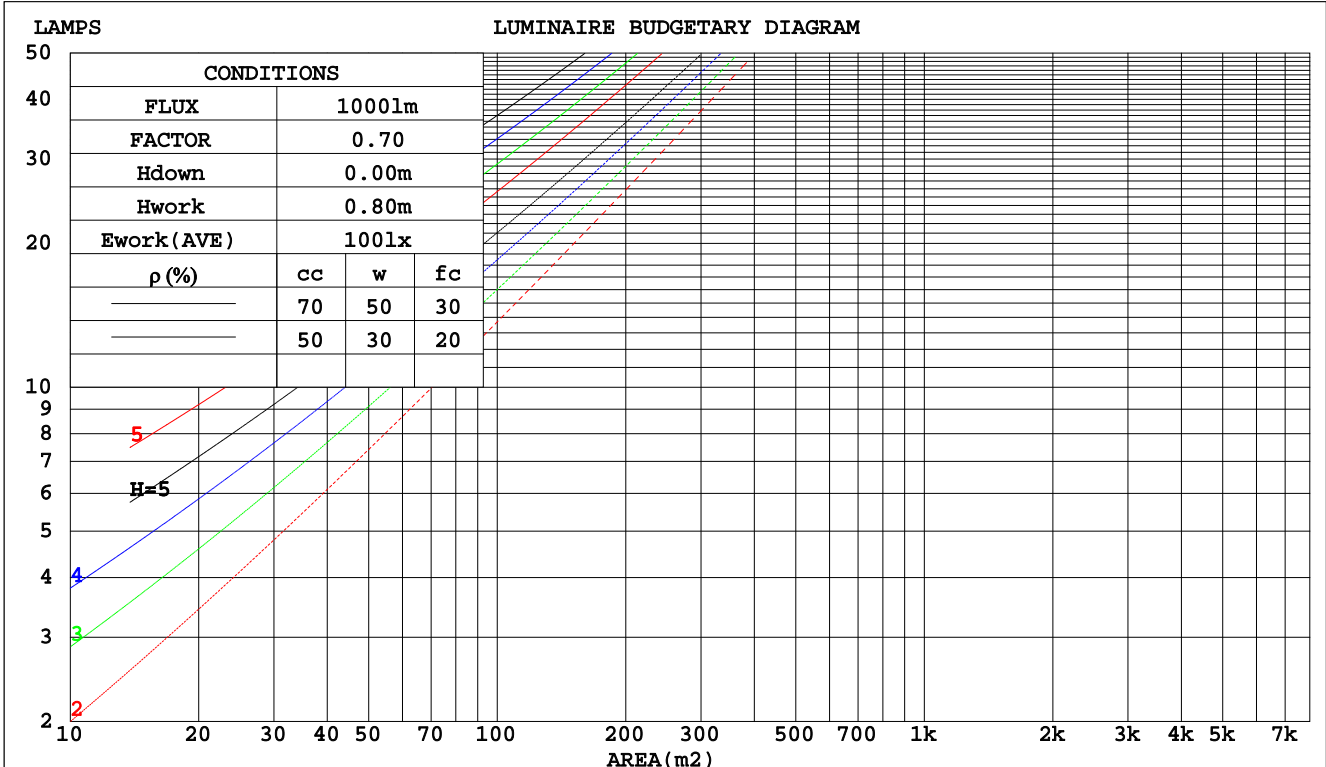
C Range: 0 - 360DEG
 C Interval: 22.5DEG
 Test Speed: HIGH
 Temperature: 24.9DEG
 Operators: Water
 Test Date: 2023-09-08

γ Range: 0 - 180DEG
 γ Interval: 1.0DEG
 Test System: EVERFINE GO-R5000_V2 SYSTEM V2.00.446
 Humidity: 50%
 Test Distance: 2.513m [K=1.0000]
 Remarks: Model No: UCL-31B-32G

CU AND LUMINAIRE BUDGETARY ESTIMATE DIAGRAM

Test:U:120.06V I:0.1503A P:16.980W PF:0.9410 Freq:60.00Hz Lamp Flux:1210.34x1 lm		
NAME: ASD-UCS-32D16CC	TYPE: N/A	WEIGHT: N/A
SPEC.: N/A	DIM.: N/A	SERIAL No.: N/A
MFR.: ASD Lighting Corp	SUR.: N/A	Shielding Angle: N/A

pcc	80%			70%			50%			30%			10%			0
	50%	30%	10%	50%	30%	10%	50%	30%	10%	50%	30%	10%	50%	30%	10%	0
pw																0
pfc	20%			20%			20%			20%			20%			0
RCR	RCR:Room Cavity Ratio															
	Coefficients of Utilization(CU)															
0.0	1.19	1.19	1.19	1.16	1.16	1.16	1.11	1.11	1.11	1.06	1.06	1.06	1.02	1.02	1.02	.00
1.0	1.04	.00	.96	1.02	.98	.94	.97	.94	.91	.93	.91	.88	.90	.88	.86	.84
2.0	.90	.84	.78	.89	.82	.77	.85	.80	.75	.82	.77	.73	.79	.75	.72	.69
3.0	.79	.71	.65	.78	.70	.64	.75	.68	.63	.72	.66	.62	.69	.65	.61	.58
4.0	.70	.61	.55	.69	.61	.54	.66	.59	.53	.64	.58	.53	.62	.56	.52	.50
5.0	.63	.54	.47	.62	.53	.47	.59	.52	.46	.57	.51	.46	.56	.50	.45	.43
6.0	.56	.47	.41	.55	.47	.41	.54	.46	.40	.52	.45	.40	.50	.44	.40	.38
7.0	.51	.42	.36	.50	.42	.36	.49	.41	.36	.47	.41	.35	.46	.40	.35	.33
8.0	.47	.38	.32	.46	.38	.32	.45	.37	.32	.43	.37	.32	.42	.36	.32	.30
9.0	.43	.35	.29	.42	.34	.29	.41	.34	.29	.40	.33	.29	.39	.33	.28	.27
10.0	.40	.32	.26	.39	.31	.26	.38	.31	.26	.37	.31	.26	.36	.30	.26	.24



C Range: 0 - 360DEG
 C Interval: 22.5DEG
 Test Speed: HIGH
 Temperature:24.9DEG
 Operators:Water
 Test Date:2023-09-08

γ Range: 0 - 180DEG
 γ Interval: 1.0DEG
 Test System:EVERFINE GO-R5000_V2 SYSTEM V2.00.446
 Humidity:50%
 Test Distance:2.513m [K=1.0000]
 Remarks: Model No: UCL-31B-32G

WEC AND CCEC

Test:U:120.06V I:0.1503A P:16.980W PF:0.9410 Freq:60.00Hz		
Lamp Flux:1210.34x1 lm		
NAME: ASD-UCS-32D16CC	TYPE: N/A	WEIGHT: N/A
SPEC.: N/A	DIM.: N/A	SERIAL No.: N/A
MFR.: ASD Lighting Corp	SUR.: N/A	Shielding Angle: N/A

ρcc	80%			70%			50%			30%			10%			0
ρw	50%	30%	10%	50%	30%	10%	50%	30%	10%	50%	30%	10%	50%	30%	10%	0
ρfc	20%			20%			20%			20%			20%			0
RCR	RCR:Room Cavity Ratio						Wall Exitance Coefficients(WEC)									
0.0																
1.0	.310	.176	.056	.303	.173	.055	.289	.166	.053	.277	.160	.051	.266	.154	.050	
2.0	.292	.160	.049	.285	.157	.048	.274	.152	.047	.263	.147	.046	.253	.143	.045	
3.0	.270	.144	.043	.264	.142	.043	.254	.138	.042	.244	.134	.041	.236	.130	.040	
4.0	.249	.130	.038	.244	.128	.038	.235	.125	.037	.227	.122	.037	.219	.119	.036	
5.0	.230	.117	.034	.226	.116	.034	.218	.113	.033	.210	.111	.033	.203	.109	.033	
6.0	.214	.107	.031	.210	.106	.030	.202	.104	.030	.196	.102	.030	.189	.100	.030	
7.0	.199	.098	.028	.195	.097	.028	.189	.095	.028	.183	.094	.027	.177	.092	.027	
8.0	.186	.091	.026	.183	.090	.025	.177	.088	.025	.171	.087	.025	.166	.085	.025	
9.0	.174	.084	.024	.171	.083	.023	.166	.082	.023	.161	.081	.023	.156	.079	.023	
10.0	.164	.078	.022	.161	.078	.022	.156	.077	.022	.152	.075	.021	.148	.074	.021	

ρcc	80%			70%			50%			30%			10%			0
ρw	50%	30%	10%	50%	30%	10%	50%	30%	10%	50%	30%	10%	50%	30%	10%	0
ρfc	20%			20%			20%			20%			20%			0
RCR	RCR:Room Cavity Ratio						Ceiling Cavity Exitance Coefficients(CCEC)									
0.0	.191	.191	.191	.164	.164	.164	.112	.112	.112	.064	.064	.064	.020	.020	.020	
1.0	.181	.157	.135	.155	.135	.116	.106	.093	.080	.061	.054	.047	.020	.017	.015	
2.0	.173	.133	.099	.148	.114	.085	.102	.079	.060	.059	.046	.035	.019	.015	.011	
3.0	.165	.115	.075	.142	.099	.065	.097	.069	.046	.056	.040	.027	.018	.013	.009	
4.0	.158	.102	.059	.135	.088	.051	.093	.061	.036	.054	.036	.021	.017	.012	.007	
5.0	.150	.091	.048	.129	.079	.042	.089	.055	.030	.052	.032	.018	.017	.011	.006	
6.0	.143	.083	.040	.123	.072	.035	.085	.050	.025	.049	.030	.015	.016	.010	.005	
7.0	.136	.076	.034	.117	.066	.030	.081	.046	.021	.047	.027	.013	.015	.009	.004	
8.0	.130	.070	.030	.112	.061	.026	.077	.043	.018	.045	.025	.011	.015	.008	.004	
9.0	.124	.065	.026	.107	.057	.023	.074	.040	.016	.043	.024	.010	.014	.008	.003	
10.0	.118	.061	.023	.102	.053	.020	.071	.037	.014	.041	.022	.009	.013	.007	.003	

C Range: 0 - 360DEG
 C Interval: 22.5DEG
 Test Speed: HIGH
 Temperature:24.9DEG
 Operators:Water
 Test Date:2023-09-08

γ Range: 0 - 180DEG
 γ Interval: 1.0DEG
 Test System:EVERFINE GO-R5000_V2 SYSTEM V2.00.446
 Humidity:50%
 Test Distance:2.513m [K=1.0000]
 Remarks: Model No: UCL-31B-32G

UGR(Unified Glare Rating) Table

Test:U:120.06V I:0.1503A P:16.980W PF:0.9410 Freq:60.00Hz										
Lamp Flux:1210.34x1 lm										
NAME: ASD-UCS-32D16CC				TYPE: N/A				WEIGHT: N/A		
SPEC.: N/A				DIM.: N/A				SERIAL No.: N/A		
MFR.: ASD Lighting Corp				SUR.: N/A				Shielding Angle: N/A		
ceiling/cavity	0.7	0.7	0.5	0.5	0.3	0.7	0.7	0.5	0.5	0.3
walls	0.5	0.3	0.5	0.3	0.3	0.5	0.3	0.5	0.3	0.3
working plane	0.2	0.2	0.2	0.2	0.2	0.2	0.2	0.2	0.2	0.2
Room dimensions	Viewed crosswise					Viewed endwise				
x = 2H y = 2H	21.9	23.4	22.2	23.6	23.9	21.6	23.1	21.8	23.3	23.5
3H	23.5	24.9	23.8	25.1	25.4	23.0	24.4	23.3	24.7	24.9
4H	24.1	25.4	24.4	25.7	25.9	23.6	24.9	23.9	25.2	25.5
6H	24.5	25.8	24.8	26.0	26.3	24.0	25.3	24.3	25.5	25.8
8H	24.6	25.8	25.0	26.1	26.4	24.1	25.3	24.5	25.6	25.9
12H	24.7	25.9	25.0	26.2	26.5	24.2	25.3	24.5	25.6	25.9
4H 2H	22.5	23.8	22.8	24.1	24.3	22.2	23.6	22.5	23.8	24.1
3H	24.2	25.4	24.6	25.7	26.0	23.9	25.0	24.2	25.3	25.6
4H	25.0	26.0	25.3	26.4	26.7	24.6	25.6	24.9	25.9	26.3
6H	25.5	26.5	25.9	26.8	27.2	25.1	26.0	25.5	26.4	26.7
8H	25.7	26.6	26.1	27.0	27.3	25.2	26.1	25.6	26.5	26.9
12H	25.8	26.6	26.2	27.0	27.4	25.3	26.1	25.8	26.5	26.9
8H 4H	25.2	26.1	25.6	26.5	26.9	24.8	25.7	25.3	26.1	26.5
6H	25.9	26.6	26.3	27.0	27.5	25.5	26.2	25.9	26.6	27.1
8H	26.2	26.8	26.6	27.2	27.7	25.7	26.4	26.2	26.8	27.3
12H	26.3	26.9	26.8	27.3	27.8	25.9	26.5	26.4	26.9	27.4
12H 4H	25.2	26.0	25.6	26.4	26.8	24.9	25.7	25.3	26.1	26.5
6H	25.9	26.6	26.4	27.0	27.5	25.6	26.2	26.0	26.6	27.1
8H	26.2	26.8	26.7	27.3	27.7	25.8	26.4	26.3	26.8	27.3
Variations with the observer position at spacings(CIE Pub.117):										
S = 1.0H	+ 0.1 / - 0.2					+ 0.2 / - 0.2				
1.5H	+ 0.2 / - 0.3					+ 0.2 / - 0.3				
2.0H	+ 0.2 / - 0.3					+ 0.2 / - 0.3				

CIE Pub.117, 1210 lm Total Lamp Luminous Flux Correct (8log(F/F0) = 0.7)
 Area: 0.024397 m2

C Range: 0 - 360DEG
 C Interval: 22.5DEG
 Test Speed: HIGH
 Temperature:24.9DEG
 Operators:Water
 Test Date:2023-09-08

γ Range: 0 - 180DEG
 γ Interval: 1.0DEG
 Test System:EVERFINE GO-R5000_V2 SYSTEM V2.00.446
 Humidity:50%
 Test Distance:2.513m [K=1.0000]
 Remarks: Model No: UCL-31B-32G

UTILIZATION FACTORS TABLE

Test:U:120.06V I:0.1503A P:16.980W PF:0.9410 Freq:60.00Hz Lamp Flux:1210.34x1 lm		
NAME: ASD-UCS-32D16CC	TYPE: N/A	WEIGHT: N/A
SPEC.: N/A	DIM.: N/A	SERIAL No.: N/A
MFR.: ASD Lighting Corp	SUR.: N/A	Shielding Angle: N/A

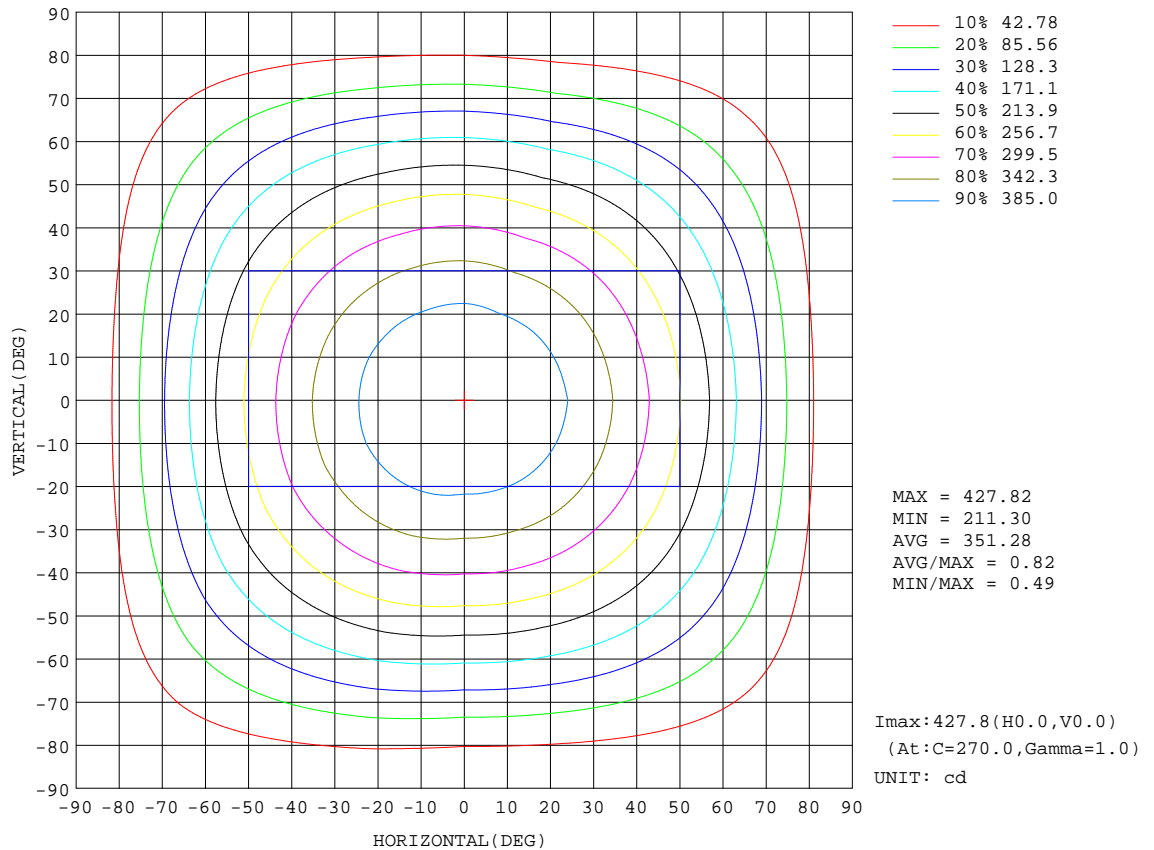
REFLECTANCE										
Ceiling	0.8	0.8	0.8	0.7	0.7	0.7	0.5	0.5	0.5	0
Walls	0.7	0.5	0.3	0.7	0.5	0.3	0.7	0.5	0.3	0
Working plane	0.2	0.2	0.2	0.2	0.2	0.2	0.2	0.2	0.2	0
ROOM INDEX	UTILIZATION FACTORS(PERCENT) $k(RI) \times RCR = 5$									
k = 0.60	57	46	39	57	46	39	56	45	39	32
0.80	68	56	49	66	55	48	65	55	48	41
1.00	76	65	57	75	64	57	72	66	57	50
1.25	83	73	65	82	72	65	79	70	64	57
1.50	88	78	71	86	77	71	83	75	70	62
2.00	95	86	80	93	85	79	90	83	78	70
2.50	99	91	85	97	90	84	93	87	82	74
3.00	102	95	90	100	94	89	96	91	87	78
4.00	106	101	96	104	99	94	100	95	92	83
5.00	109	104	100	106	102	98	102	98	95	86
ROOM INDEX	UF(total)									Direct
According to DIN EN 13032-2 2004			Suspended				SHRNOM = 1.25			

C Range: 0 - 360DEG
 C Interval: 22.5DEG
 Test Speed: HIGH
 Temperature:24.9DEG
 Operators:Water
 Test Date:2023-09-08

γ Range: 0 - 180DEG
 γ Interval: 1.0DEG
 Test System:EVERFINE GO-R5000_V2 SYSTEM V2.00.446
 Humidity:50%
 Test Distance:2.513m [K=1.0000]
 Remarks: Model No: UCL-31B-32G

ISOCANDELA DIAGRAM

Test:U:120.06V I:0.1503A P:16.980W PF:0.9410 Freq:60.00Hz Lamp Flux:1210.34x1 lm		
NAME: ASD-UCS-32D16CC	TYPE: N/A	WEIGHT: N/A
SPEC.: N/A	DIM.: N/A	SERIAL No.: N/A
MFR.: ASD Lighting Corp	SUR.: N/A	Shielding Angle: N/A



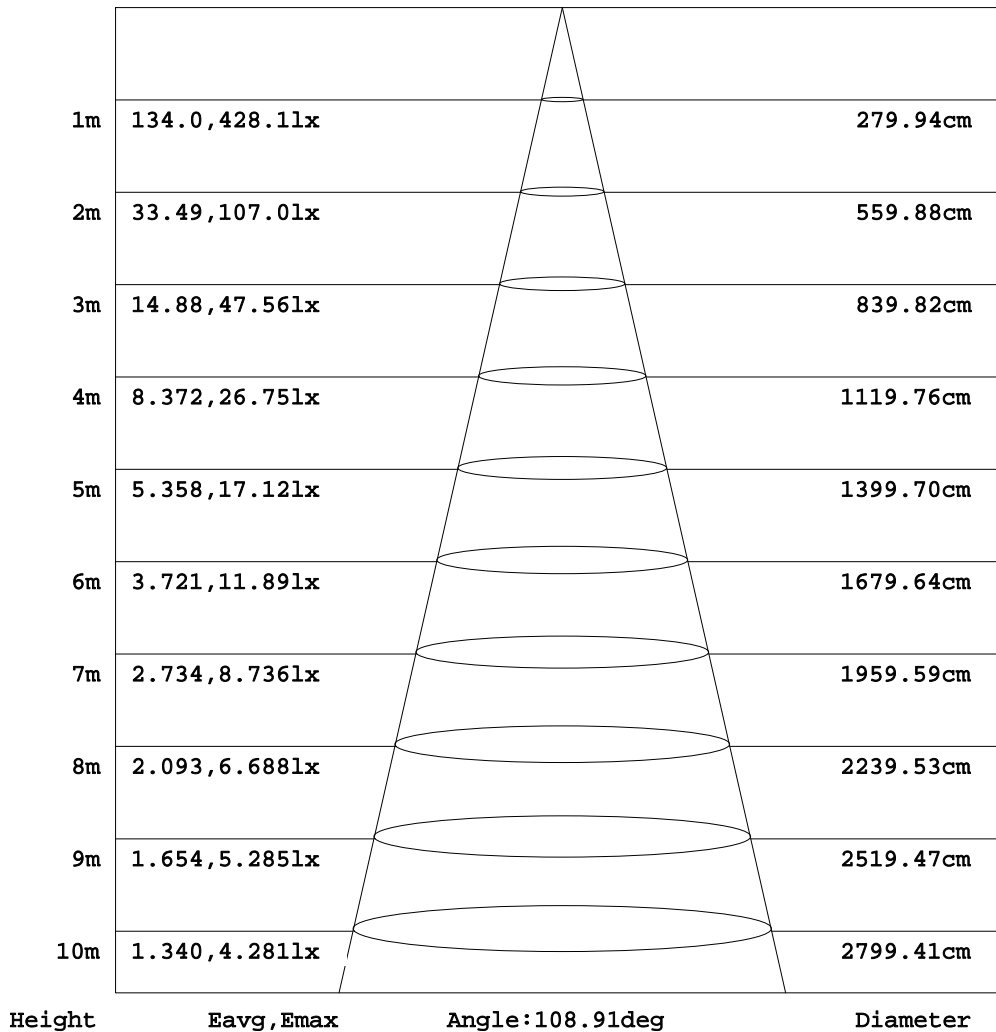
C Range: 0 - 360DEG
 C Interval: 22.5DEG
 Test Speed: HIGH
 Temperature: 24.9DEG
 Operators: Water
 Test Date: 2023-09-08

γ Range: 0 - 180DEG
 γ Interval: 1.0DEG
 Test System: EVERFINE GO-R5000_V2 SYSTEM V2.00.446
 Humidity: 50%
 Test Distance: 2.513m [K=1.0000]
 Remarks: Model No: UCL-31B-32G

AAI Figure

Test:U:120.06V I:0.1503A P:16.980W PF:0.9410 Freq:60.00Hz Lamp Flux:1210.34x1 lm		
NAME: ASD-UCS-32D16CC	TYPE: N/A	WEIGHT: N/A
SPEC.: N/A	DIM.: N/A	SERIAL No.: N/A
MFR.: ASD Lighting Corp	SUR.: N/A	Shielding Angle: N/A

Flux out:858.3 lm



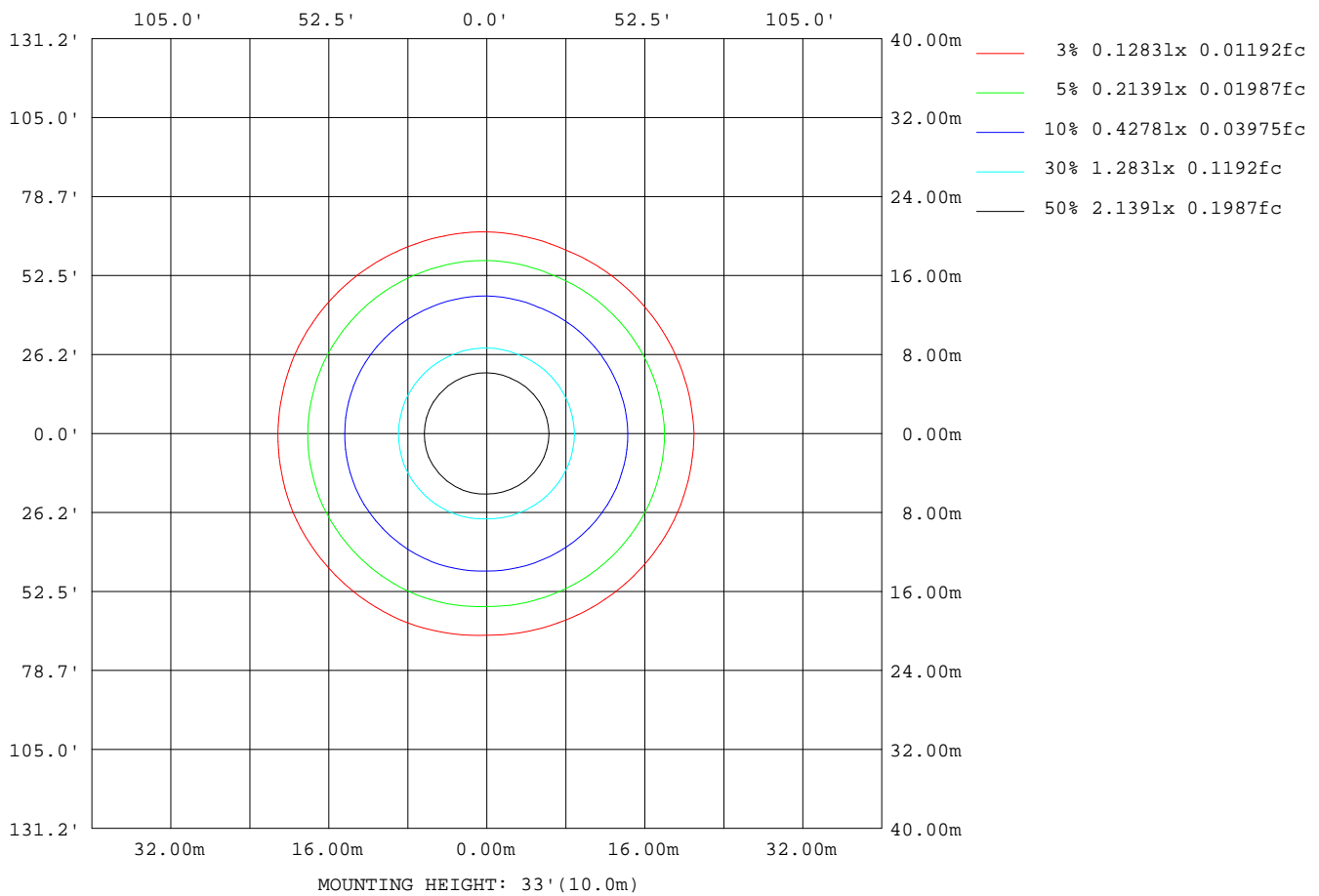
Note: The Curves indicate the illuminated area and the average illumination when the luminaire is at different distance.

C Range: 0 - 360DEG
 C Interval: 22.5DEG
 Test Speed: HIGH
 Temperature: 24.9DEG
 Operators: Water
 Test Date: 2023-09-08

γ Range: 0 - 180DEG
 γ Interval: 1.0DEG
 Test System: EVERFINE GO-R5000_V2 SYSTEM V2.00.446
 Humidity: 50%
 Test Distance: 2.513m [K=1.0000]
 Remarks: Model No: UCL-31B-32G

ISOLUX DIAGRAM

Test:U:120.06V I:0.1503A P:16.980W PF:0.9410 Freq:60.00Hz Lamp Flux:1210.34x1 lm		
NAME: ASD-UCS-32D16CC	TYPE: N/A	WEIGHT: N/A
SPEC.: N/A	DIM.: N/A	SERIAL No.: N/A
MFR.: ASD Lighting Corp	SUR.: N/A	Shielding Angle: N/A



C Range: 0 - 360DEG
 C Interval: 22.5DEG
 Test Speed: HIGH
 Temperature: 24.9DEG
 Operators: Water
 Test Date: 2023-09-08

γ Range: 0 - 180DEG
 γ Interval: 1.0DEG
 Test System: EVERFINE GO-R5000_V2 SYSTEM V2.00.446
 Humidity: 50%
 Test Distance: 2.513m [K=1.0000]
 Remarks: Model No: UCL-31B-32G

LED Avg.L Report

Test:U:120.06V I:0.1503A P:16.980W PF:0.9410 Freq:60.00Hz Lamp Flux:1210.34x1 lm		
NAME: ASD-UCS-32D16CC	TYPE: N/A	WEIGHT: N/A
SPEC.: N/A	DIM.: N/A	SERIAL No.: N/A
MFR.: ASD Lighting Corp	SUR.: N/A	Shielding Angle: N/A

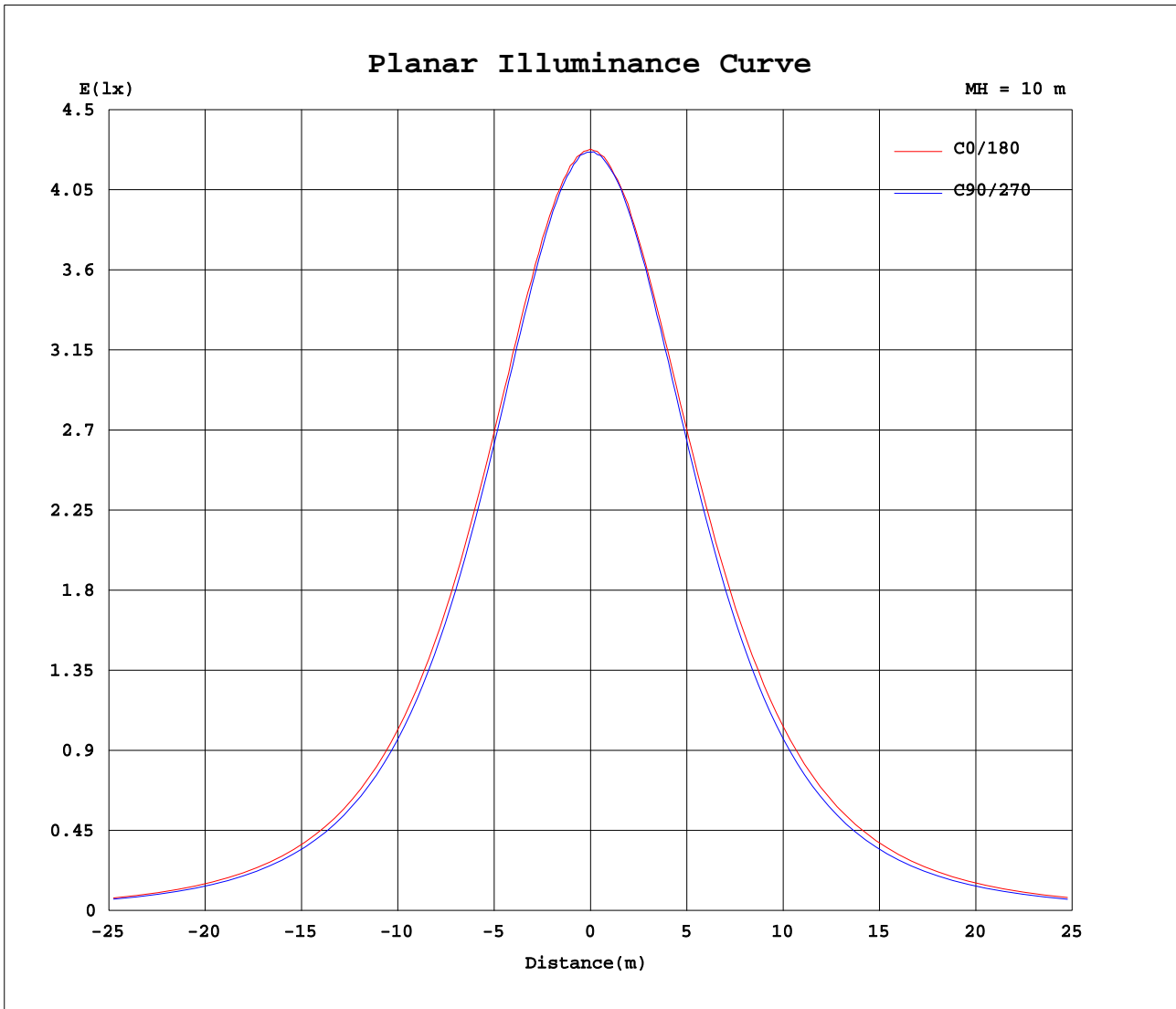
AvgL	cd/m2
L_0~180(65)av	15465
L_0~180(75)av	13587
L_0~180(85)av	10179
L_90~270(65)av	13913
L_90~270(75)av	11875
L_90~270(85)av	7914
L_45(65)av	14636
L_45(75)av	12708
L_45(85)av	8998

Standard: GB/T 29293-2012

C Range: 0 - 360DEG
 C Interval: 22.5DEG
 Test Speed: HIGH
 Temperature:24.9DEG
 Operators:Water
 Test Date:2023-09-08

γ Range: 0 - 180DEG
 γ Interval: 1.0DEG
 Test System:EVERFINE GO-R5000_V2 SYSTEM V2.00.446
 Humidity:50%
 Test Distance:2.513m [K=1.0000]
 Remarks: Model No: UCL-31B-32G

Planar Illuminance Curve



C Range: 0 - 360DEG
 C Interval: 22.5DEG
 Test Speed: HIGH
 Temperature: 24.9DEG
 Operators: Water
 Test Date: 2023-09-08

γ Range: 0 - 180DEG
 γ Interval: 1.0DEG
 Test System: EVERFINE GO-R5000_V2 SYSTEM V2.00.446
 Humidity: 50%
 Test Distance: 2.513m [K=1.0000]
 Remarks: Model No: UCL-31B-32G

LUMINOUS DISTRIBUTION INTENSITY DATA

Test:U:120.06V I:0.1503A P:16.980W PF:0.9410 Freq:60.00Hz Lamp Flux:1210.34x1 lm		
NAME: ASD-UCS-32D16CC	TYPE: N/A	WEIGHT: N/A
SPEC.: N/A	DIM.: N/A	SERIAL No.: N/A
MFR.: ASD Lighting Corp	SUR.: N/A	Shielding Angle: N/A

Table--1

UNIT: cd

C(DEG) γ (DEG)	0	22.5	45	67.5	90	112.5	135	157.5	180	202.5	225	247.5	270	292.5	315	337.5			
0	427	427	427	427	427	427	427	427	427	427	427	427	427	427	427	427			
5	425	424	424	425	425	425	425	426	425	424	424	425	425	424	424	424			
10	420	419	418	418	418	420	420	421	420	419	420	420	419	418	418	419			
15	410	409	407	408	407	410	411	413	410	410	409	408	409	407	407	408			
20	398	396	394	392	392	396	398	401	398	397	395	394	395	391	393	395			
25	381	379	376	374	373	379	381	385	382	381	378	375	376	373	376	379			
30	361	359	355	353	353	359	362	367	364	362	358	354	354	350	354	359			
35	339	337	333	329	328	335	339	344	343	339	334	330	329	326	330	336			
40	314	312	307	303	302	310	315	321	319	315	310	304	303	299	304	310			
45	287	285	279	274	273	281	286	293	292	288	281	275	274	270	275	282			
50	257	255	250	244	243	252	257	264	262	259	252	245	243	239	245	252			
55	226	224	218	213	211	220	225	232	231	228	220	213	211	207	212	220			
60	192	190	184	179	178	187	193	198	197	194	186	180	178	173	178	186			
65	157	155	150	146	144	153	158	163	162	158	152	146	143	138	144	150			
70	120	119	115	111	109	118	122	127	124	121	115	110	108	103	107	113			
75	83.9	83.2	80.2	76.8	75.8	84.2	87.5	91.2	87.7	85.3	80.3	76.0	74.2	69.0	73.0	77.6			
80	49.3	49.0	47.3	45.4	44.7	52.2	54.5	56.8	53.3	51.3	47.5	44.3	42.8	37.9	40.8	44.3			
85	19.7	19.9	18.9	18.0	17.6	23.5	25.0	26.4	23.6	22.1	19.0	17.1	16.1	12.0	13.6	16.2			
90	0.12	0.08	0.07	0.06	0.06	2.72	2.94	3.34	1.09	0.49	0.03	0.02	0.02	0.02	0.02	0.02			
95	0.09	0.11	0.12	0.08	0.08	0.08	0.08	0.11	0.03	0.03	0.03	0.03	0.03	0.03	0.03	0.03			
100	0.10	0.11	0.12	0.11	0.11	0.11	0.11	0.11	0.04	0.04	0.04	0.04	0.04	0.04	0.05	0.04			
105	0.11	0.12	0.12	0.12	0.12	0.12	0.12	0.12	0.06	0.06	0.06	0.06	0.06	0.05	0.06	0.06			
110	0.13	0.13	0.13	0.13	0.13	0.13	0.13	0.13	0.07	0.07	0.07	0.07	0.07	0.07	0.07	0.07			
115	0.15	0.15	0.15	0.15	0.15	0.15	0.15	0.15	0.09	0.09	0.09	0.09	0.09	0.09	0.09	0.08			
120	0.17	0.18	0.18	0.18	0.18	0.17	0.17	0.17	0.11	0.11	0.11	0.11	0.10	0.10	0.11	0.11			
125	0.21	0.21	0.21	0.22	0.22	0.21	0.21	0.21	0.14	0.13	0.13	0.13	0.12	0.13	0.13	0.13			
130	0.25	0.26	0.26	0.27	0.27	0.26	0.25	0.25	0.16	0.16	0.16	0.16	0.15	0.16	0.15	0.16			
135	0.31	0.32	0.32	0.33	0.34	0.32	0.31	0.29	0.18	0.18	0.18	0.18	0.18	0.18	0.18	0.19			
140	0.39	0.40	0.43	0.42	0.43	0.41	0.40	0.37	0.21	0.20	0.21	0.21	0.21	0.21	0.21	0.21			
145	0.47	0.50	0.54	0.55	0.56	0.53	0.50	0.46	0.23	0.23	0.24	0.25	0.25	0.25	0.24	0.25			
150	0.55	0.58	0.62	0.64	0.64	0.63	0.59	0.55	0.26	0.25	0.27	0.27	0.27	0.28	0.27	0.28			
155	0.63	0.67	0.69	0.72	0.73	0.70	0.66	0.63	0.29	0.28	0.31	0.31	0.30	0.32	0.31	0.34			
160	0.69	0.71	0.73	0.77	0.75	0.76	0.72	0.69	0.35	0.35	0.35	0.35	0.34	0.35	0.34	0.37			
165	0.70	0.71	0.73	0.74	0.76	0.75	0.73	0.69	0.39	0.39	0.37	0.39	0.36	0.38	0.36	0.40			
170	0.67	0.68	0.68	0.68	0.68	0.68	0.69	0.69	0.44	0.43	0.42	0.41	0.39	0.38	0.39	0.42			
175	0.64	0.64	0.63	0.62	0.61	0.63	0.64	0.64	0.49	0.49	0.47	0.45	0.44	0.44	0.45	0.49			
180	0.57	0.56	0.53	0.52	0.51	0.55	0.57	0.59	0.57	0.57	0.56	0.53	0.52	0.54	0.55	0.57			

C Range: 0 - 360DEG
 C Interval: 22.5DEG
 Test Speed: HIGH
 Temperature:24.9DEG
 Operators:Water
 Test Date:2023-09-08

γ Range: 0 - 180DEG
 γ Interval: 1.0DEG
 Test System:EVERFINE GO-R5000_V2 SYSTEM V2.00.446
 Humidity:50%
 Test Distance:2.513m [K=1.0000]
 Remarks: Model No: UCL-31B-32G