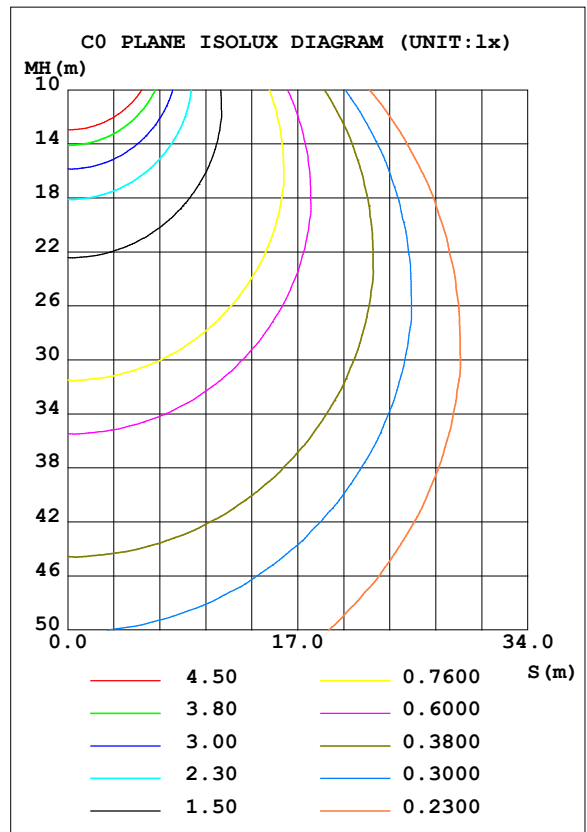
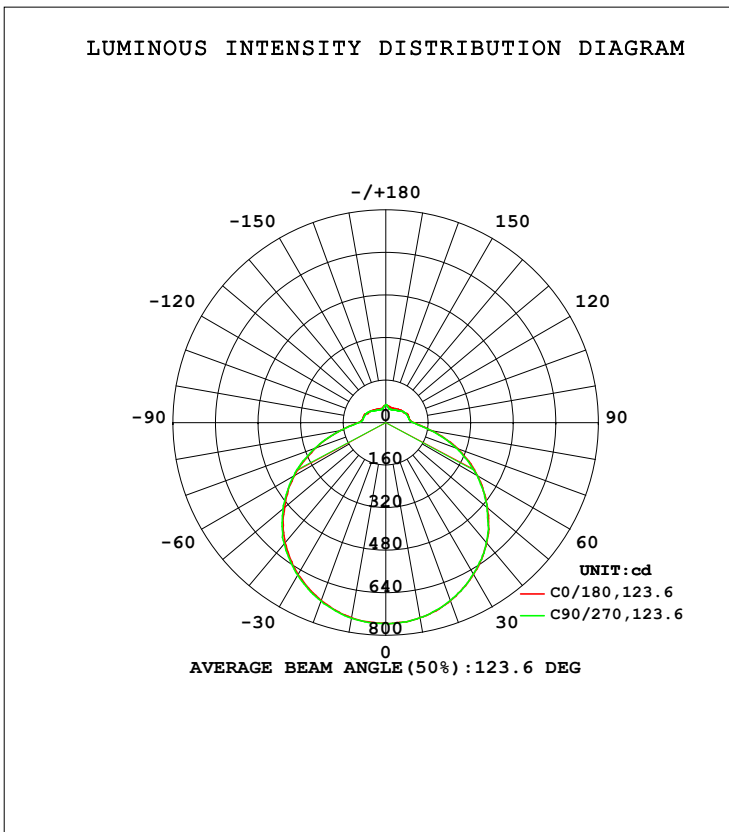


LUMINAIRE PHOTOMETRIC TEST REPORT

Test:U:120.01V I:0.3204A P:37.998W PF:0.9884 Freq:60.00Hz Lamp Flux:3009.63x1 lm		
NAME: ASD Lighting Corp	TYPE:ASD-LFC-MY-20D42S-RGB-SMARTLIGHT:	
SPEC.:ASD-LFC-MY-20D42S-RGB-SMART-3000K	DIM.:	SERIAL No.:
MFR.: ASD Lighting Corp	SUR.: -0.491	Shielding Angle:

DATA OF LAMP		PHOTOMETRIC DATA Eff: 79.21 lm/W			
MODEL		I _{max} (cd)	756.4	S/MH (C0/180)	1.30
NOMINAL POWER (W)	--	LOR (%)	100.0	S/MH (C90/270)	1.31
RATED VOLTAGE (V)	--	TOTAL FLUX (lm)	3009.6	<input type="checkbox"/> UP, DN (C0-180)	7.9, 42.1
NOMINAL FLUX (lm)	3009.63	CIE CLASS	SEMI-D.	<input type="checkbox"/> UP, DN (C180-360)	7.8, 42.2
LAMPS INSIDE	1	<input type="checkbox"/> up (%)	15.7	CIBSE SHR NOM	1.50
TEST VOLTAGE (V)	--	<input type="checkbox"/> down (%)	84.3	CIBSE SHR MAX	1.50



C Range: 0 - 360DEG
 C Interval: 22.5DEG
 Test Speed: HIGH
 Temperature: 25.3DEG
 Operators: chen
 Test Date: 2022-10-04

Range: 0 - 180DEG
 Interval: 1.0DEG
 Test System: EVERFINE GO-3000H_V1 SYSTEM V2.00.411
 Humidity: 65.0%
 Test Distance: 8.650m [K=1.0000]
 Remarks:

ZONAL FLUX DIAGRAM

ZONAL FLUX DIAGRAM:

mm	C0	C45	C90	C135	C180	C225	C270	C315	mm	□ zone	□ total	%lum,lamp
10	744.6	746.5	744.6	744.5	744.8	745.6	747.0	747.5	0- 10	71.67	71.67	2.38,2.38
20	712.2	712.1	711.2	710.4	711.1	713.0	713.8	714.2	10- 20	206.6	278.3	9.25,9.25
30	659.5	659.5	657.9	657.9	659.8	661.7	662.5	663.7	20- 30	317.6	595.9	19.8,19.8
40	590.2	589.3	588.4	591.2	589.7	593.5	594.5	597.2	30- 40	392.9	988.8	32.9,32.9
50	500.2	498.0	496.3	497.5	497.7	498.6	504.5	504.2	40- 50	422.6	1411	46.9,46.9
60	397.7	396.6	396.1	397.3	394.9	395.5	399.6	402.4	50- 60	402.4	1814	60.3,60.3
70	288.4	285.5	283.4	282.9	280.9	281.4	283.0	289.7	60- 70	338.2	2152	71.5,71.5
80	175.8	174.6	172.0	172.3	172.4	172.9	172.2	174.8	70- 80	240.7	2393	79.5,79.5
90	106.3	105.5	103.6	103.7	104.6	104.0	102.7	102.9	80- 90	145.6	2538	84.3,84.3
100	89.90	88.49	88.59	87.76	88.07	86.54	86.86	87.01	90-100	101.9	2640	87.7,87.7
110	88.80	85.33	85.92	83.97	86.32	82.12	84.05	84.43	100-110	91.63	2732	90.8,90.8
120	78.75	79.05	80.21	79.21	75.57	77.66	78.50	78.56	110-120	80.74	2813	93.5,93.5
130	73.86	67.28	68.63	65.70	70.47	65.87	68.54	67.24	120-130	65.77	2878	95.6,95.6
140	67.19	57.31	61.76	56.49	63.72	55.58	60.31	55.99	130-140	48.63	2927	97.3,97.3
150	62.36	55.39	56.31	55.04	59.36	53.76	55.12	54.30	140-150	35.73	2963	98.4,98.4
160	60.42	56.01	53.72	53.55	56.47	52.26	53.35	54.07	150-160	25.45	2988	99.3,99.3
170	63.39	61.89	58.29	60.01	59.99	59.53	57.17	59.52	160-170	15.67	3004	99.8,99.8
180	67.40	63.32	68.00	63.57	67.38	63.34	67.97	63.62	170-180	5.859	3010	100,100
DEG	LUMINOUS INTENSITY:cd									UNIT:lm		

Conical surface Flux(90deg): 1199.9 lm

%lum = 39.9%

%lamp = 39.9%

Conical surface Flux(120deg): 1813.8 lm

%lum = 60.3%

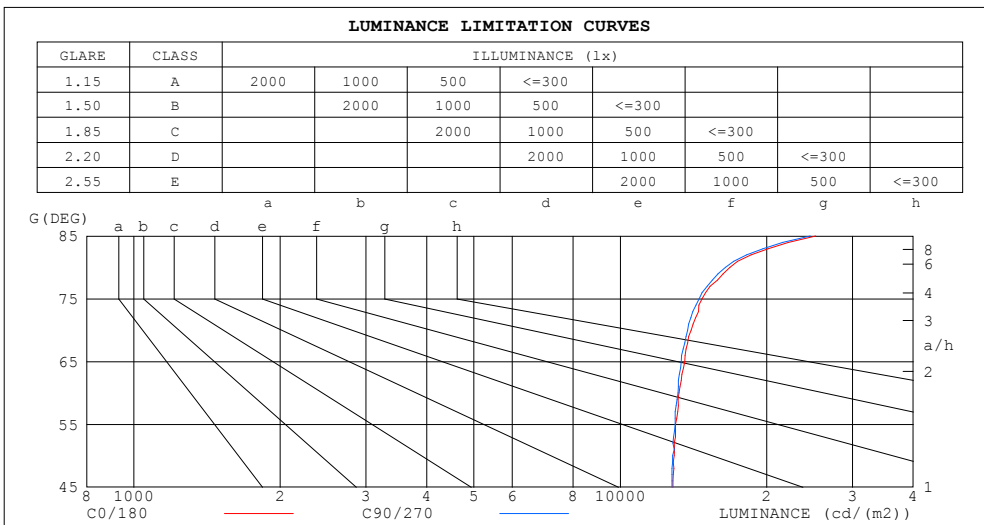
%lamp = 60.3%

C Range: 0 - 360DEG
 C Interval: 22.5DEG
 Test Speed: HIGH
 Temperature:25.3DEG
 Operators:chen
 Test Date:2022-10-04

□ Range: 0 - 180DEG
 □ Interval: 1.0DEG
 Test System:EVERFINE GO-3000H_V1 SYSTEM V2.00.411
 Humidity:65.0%
 Test Distance:8.650m [K=1.0000]
 Remarks:

LUMINANCE LIMITATION CURVES

Test:U:120.01V I:0.3204A P:37.998W PF:0.9884 Freq:60.00Hz Lamp Flux:3009.63x1 lm		
NAME: ASD Lighting Corp	TYPE:ASD-LFC-MY-20D42S-RGB-SMARTIGHT:	
SPEC.:ASD-LFC-MY-20D42S-RGB-SMART-3000K	DIM.:	SERIAL No.:
MFR.: ASD Lighting Corp	SUR.: -0.491	Shielding Angle:



LUMINANCE cd/(m2)		
G (DEG)	C0/180	C90/270
85	25236	24558
80	16794	16438
75	14736	14526
70	13990	13747
65	13567	13344
60	13197	13146
55	12992	12963
50	12911	12811
45	12834	12779

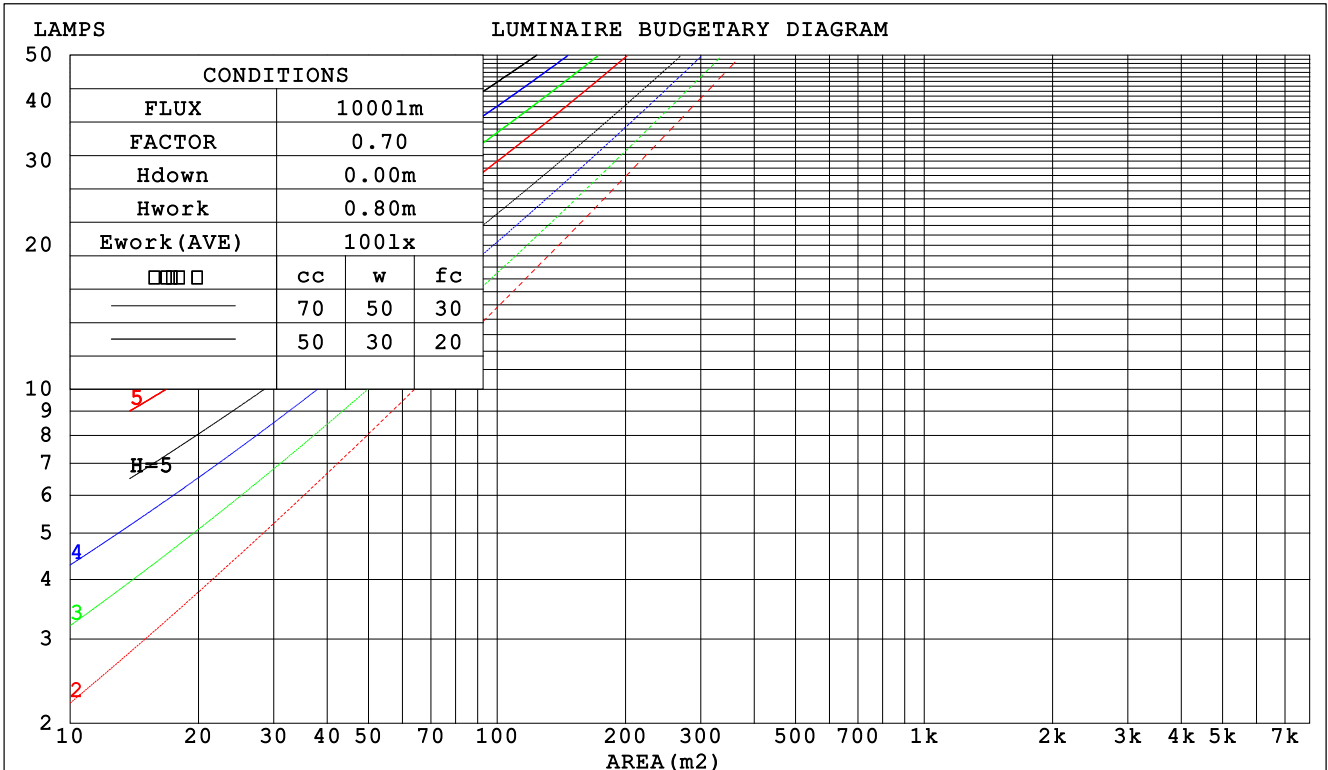
C Range: 0 - 360DEG
 C Interval: 22.5DEG
 Test Speed: HIGH
 Temperature:25.3DEG
 Operators:chen
 Test Date:2022-10-04

Range: 0 - 180DEG
 Interval: 1.0DEG
 Test System:EVERFINE GO-3000H_V1 SYSTEM V2.00.411
 Humidity:65.0%
 Test Distance:8.650m [K=1.0000]
 Remarks:

CU AND LUMINAIRE BUDGETARY ESTIMATE DIAGRAM

Test:U:120.01V I:0.3204A P:37.998W PF:0.9884 Freq:60.00Hz Lamp Flux:3009.63x1 lm		
NAME: ASD Lighting Corp	TYPE:ASD-LFC-MY-20D42S-RGB-SMARTLIGHT:	
SPEC.:ASD-LFC-MY-20D42S-RGB-SMART-3000K	DIM.:	SERIAL No.:
MFR.: ASD Lighting Corp	SUR.: -0.491	Shielding Angle:

□cc	80%			70%			50%			30%			10%			0
□w	50%	30%	10%	50%	30%	10%	50%	30%	10%	50%	30%	10%	50%	30%	10%	0
□fc	20%			20%			20%			20%			20%			0
RCR	RCR:Room Cavity Ratio						Coefficients of Utilization(CU)									
0.0	1.15	1.15	1.15	1.11	1.11	1.11	1.02	1.02	1.02	.95	.95	.95	.88	.88	.88	.84
1.0	.98	.93	.89	.94	.90	.86	.87	.84	.80	.80	.78	.75	.74	.72	.70	.67
2.0	.85	.77	.71	.81	.75	.69	.75	.70	.65	.69	.65	.61	.64	.61	.57	.54
3.0	.74	.65	.58	.71	.63	.57	.66	.59	.54	.61	.55	.51	.56	.52	.48	.45
4.0	.65	.56	.49	.62	.54	.48	.58	.51	.45	.54	.48	.43	.50	.45	.41	.38
5.0	.58	.48	.42	.56	.47	.41	.52	.44	.39	.48	.42	.37	.45	.39	.35	.33
6.0	.52	.43	.36	.50	.41	.35	.46	.39	.34	.43	.37	.32	.40	.35	.31	.28
7.0	.47	.38	.32	.45	.37	.31	.42	.35	.30	.39	.33	.28	.37	.31	.27	.25
8.0	.42	.34	.28	.41	.33	.27	.38	.31	.26	.36	.30	.25	.34	.28	.24	.22
9.0	.39	.31	.25	.38	.30	.24	.35	.28	.24	.33	.27	.23	.31	.26	.22	.20
10.0	.36	.28	.22	.35	.27	.22	.33	.26	.21	.31	.25	.20	.29	.23	.20	.18



C Range: 0 - 360DEG
 C Interval: 22.5DEG
 Test Speed: HIGH
 Temperature:25.3DEG
 Operators:chen
 Test Date:2022-10-04

□ Range: 0 - 180DEG
 □ Interval: 1.0DEG
 Test System:EVERFINE GO-3000H_V1 SYSTEM V2.00.411
 Humidity:65.0%
 Test Distance:8.650m [K=1.0000]
 Remarks:

WEC AND CCEC

Test:U:120.01V I:0.3204A P:37.998W PF:0.9884 Freq:60.00Hz Lamp Flux:3009.63x1 lm		
NAME: ASD Lighting Corp	TYPE:ASD-LFC-MY-20D42S-RGB-SMARTLIGHT:	
SPEC.:ASD-LFC-MY-20D42S-RGB-SMART-3000K	DIM.:	SERIAL No.:
MFR.: ASD Lighting Corp	SUR.: -0.491	Shielding Angle:

<input type="checkbox"/> cc	80%			70%			50%			30%			10%			0
<input type="checkbox"/> w	50%	30%	10%	50%	30%	10%	50%	30%	10%	50%	30%	10%	50%	30%	10%	0
<input type="checkbox"/> fc	20%			20%			20%			20%			20%			0
RCR	RCR:Room Cavity Ratio						Wall Exitance Coefficients (WEC)									
0.0																
1.0	.349	.198	.063	.337	.192	.061	.315	.181	.058	.294	.170	.054	.275	.160	.051	
2.0	.312	.171	.053	.302	.166	.051	.281	.157	.049	.263	.148	.046	.246	.139	.044	
3.0	.282	.150	.045	.273	.146	.044	.254	.138	.042	.238	.130	.040	.222	.123	.038	
4.0	.257	.133	.039	.248	.130	.038	.232	.123	.037	.216	.116	.035	.202	.110	.033	
5.0	.235	.120	.035	.227	.117	.034	.212	.111	.033	.198	.105	.031	.185	.099	.030	
6.0	.217	.109	.031	.209	.106	.030	.196	.100	.029	.183	.095	.028	.171	.090	.027	
7.0	.201	.099	.028	.194	.097	.028	.182	.092	.026	.170	.087	.025	.159	.083	.024	
8.0	.187	.091	.026	.181	.089	.025	.169	.085	.024	.159	.080	.023	.149	.076	.022	
9.0	.174	.084	.024	.169	.082	.023	.158	.078	.022	.149	.074	.021	.139	.071	.020	
10.0	.163	.078	.022	.158	.077	.021	.149	.073	.021	.140	.069	.020	.131	.066	.019	

<input type="checkbox"/> cc	80%			70%			50%			30%			10%			0
<input type="checkbox"/> w	50%	30%	10%	50%	30%	10%	50%	30%	10%	50%	30%	10%	50%	30%	10%	0
<input type="checkbox"/> fc	20%			20%			20%			20%			20%			0
RCR	RCR:Room Cavity Ratio						Ceiling Cavity Exitance Coefficients (CCEC)									
0.0	.310	.310	.310	.265	.265	.265	.181	.181	.181	.104	.104	.104	.033	.033	.033	
1.0	.303	.276	.252	.260	.237	.217	.178	.163	.150	.102	.094	.087	.033	.030	.028	
2.0	.296	.253	.217	.254	.218	.187	.174	.151	.131	.100	.088	.077	.032	.028	.025	
3.0	.289	.236	.194	.247	.204	.169	.170	.142	.118	.098	.083	.070	.032	.027	.023	
4.0	.281	.223	.179	.241	.193	.156	.166	.135	.110	.096	.079	.065	.031	.026	.021	
5.0	.274	.214	.169	.235	.185	.147	.162	.129	.104	.094	.076	.062	.030	.025	.020	
6.0	.266	.206	.162	.229	.178	.141	.158	.125	.100	.092	.073	.059	.030	.024	.020	
7.0	.260	.199	.156	.223	.172	.136	.154	.121	.097	.090	.071	.057	.029	.023	.019	
8.0	.253	.193	.152	.218	.168	.133	.151	.118	.094	.088	.069	.056	.028	.023	.019	
9.0	.247	.188	.149	.213	.164	.130	.147	.115	.092	.086	.068	.055	.028	.022	.018	
10.0	.241	.184	.146	.208	.160	.128	.144	.113	.091	.084	.067	.054	.027	.022	.018	

C Range: 0 - 360DEG
 C Interval: 22.5DEG
 Test Speed: HIGH
 Temperature:25.3DEG
 Operators:chen
 Test Date:2022-10-04

Range: 0 - 180DEG
 Interval: 1.0DEG
 Test System:EVERFINE GO-3000H_V1 SYSTEM V2.00.411
 Humidity:65.0%
 Test Distance:8.650m [K=1.0000]
 Remarks:

UGR(Unified Glare Rating) Table

Test:U:120.01V I:0.3204A P:37.998W PF:0.9884 Freq:60.00Hz Lamp Flux:3009.63x1 lm		
NAME: ASD Lighting Corp	TYPE:ASD-LFC-MY-20D42S-RGB-SMARTIGHT:	
SPEC.:ASD-LFC-MY-20D42S-RGB-SMART-3000K	DIM.:	SERIAL No.:
MFR.: ASD Lighting Corp	SUR.: -0.491	Shielding Angle:

ceiling/cavity	0.7	0.7	0.5	0.5	0.3	0.7	0.7	0.5	0.5	0.3
walls	0.5	0.3	0.5	0.3	0.3	0.5	0.3	0.5	0.3	0.3
working plane	0.2	0.2	0.2	0.2	0.2	0.2	0.2	0.2	0.2	0.2
Room dimensions	Viewed crosswise					Viewed endwise				
x = 2H y = 2H	20.9	22.3	21.4	22.7	23.3	20.9	22.3	21.4	22.7	23.2
3H	22.8	24.1	23.3	24.6	25.1	22.8	24.0	23.3	24.5	25.1
4H	23.7	24.9	24.3	25.4	26.0	23.7	24.9	24.2	25.4	25.9
6H	24.6	25.7	25.2	26.3	26.9	24.5	25.6	25.1	26.2	26.8
8H	25.0	26.1	25.6	26.7	27.3	24.9	26.0	25.5	26.6	27.2
12H	25.5	26.6	26.1	27.1	27.7	25.4	26.4	26.0	27.0	27.6
4H 2H	21.6	22.8	22.1	23.3	23.9	21.6	22.7	22.1	23.3	23.8
3H	23.7	24.7	24.2	25.3	25.9	23.6	24.7	24.2	25.2	25.9
4H	24.7	25.7	25.3	26.3	26.9	24.7	25.6	25.3	26.2	26.9
6H	25.8	26.6	26.4	27.2	27.9	25.7	26.5	26.3	27.2	27.8
8H	26.3	27.1	26.9	27.7	28.4	26.2	27.0	26.8	27.6	28.3
12H	26.9	27.6	27.5	28.3	29.0	26.8	27.5	27.4	28.2	28.9
8H 4H	25.1	25.9	25.8	26.5	27.2	25.1	25.9	25.7	26.5	27.2
6H	26.4	27.1	27.1	27.7	28.5	26.3	27.0	27.0	27.6	28.4
8H	27.1	27.7	27.8	28.3	29.1	27.0	27.6	27.7	28.3	29.0
12H	27.9	28.4	28.6	29.1	29.9	27.8	28.3	28.5	29.0	29.8
12H 4H	25.2	25.9	25.8	26.5	27.3	25.1	25.8	25.8	26.5	27.2
6H	26.5	27.1	27.2	27.8	28.6	26.5	27.1	27.2	27.7	28.5
8H	27.3	27.8	28.0	28.5	29.3	27.2	27.8	27.9	28.4	29.2
Variations with the observer position at spacings:										
S = 1.0H	+ 0.1 / - 0.1					+ 0.1 / - 0.1				
1.5H	+ 0.2 / - 0.3					+ 0.2 / - 0.3				
2.0H	+ 0.2 / - 0.3					+ 0.2 / - 0.4				

CIE Pub.117, 3010 lm Total Lamp Luminous Flux Corrected (8log(F/F0) = 3.8)
 Area: 0.0602702 m2

C Range: 0 - 360DEG
 C Interval: 22.5DEG
 Test Speed: HIGH
 Temperature:25.3DEG
 Operators:chen
 Test Date:2022-10-04

Range: 0 - 180DEG
 Interval: 1.0DEG
 Test System:EVERFINE GO-3000H_V1 SYSTEM V2.00.411
 Humidity:65.0%
 Test Distance:8.650m [K=1.0000]
 Remarks:

UTILIZATION FACTORS TABLE

Test:U:120.01V I:0.3204A P:37.998W PF:0.9884 Freq:60.00Hz Lamp Flux:3009.63x1 lm		
NAME: ASD Lighting Corp	TYPE:ASD-LFC-MY-20D42S-RGB-SMART:	
SPEC.:ASD-LFC-MY-20D42S-RGB-SMART-3000K	DIM.:	SERIAL No.:
MFR.: ASD Lighting Corp	SUR.: -0.491	Shielding Angle:

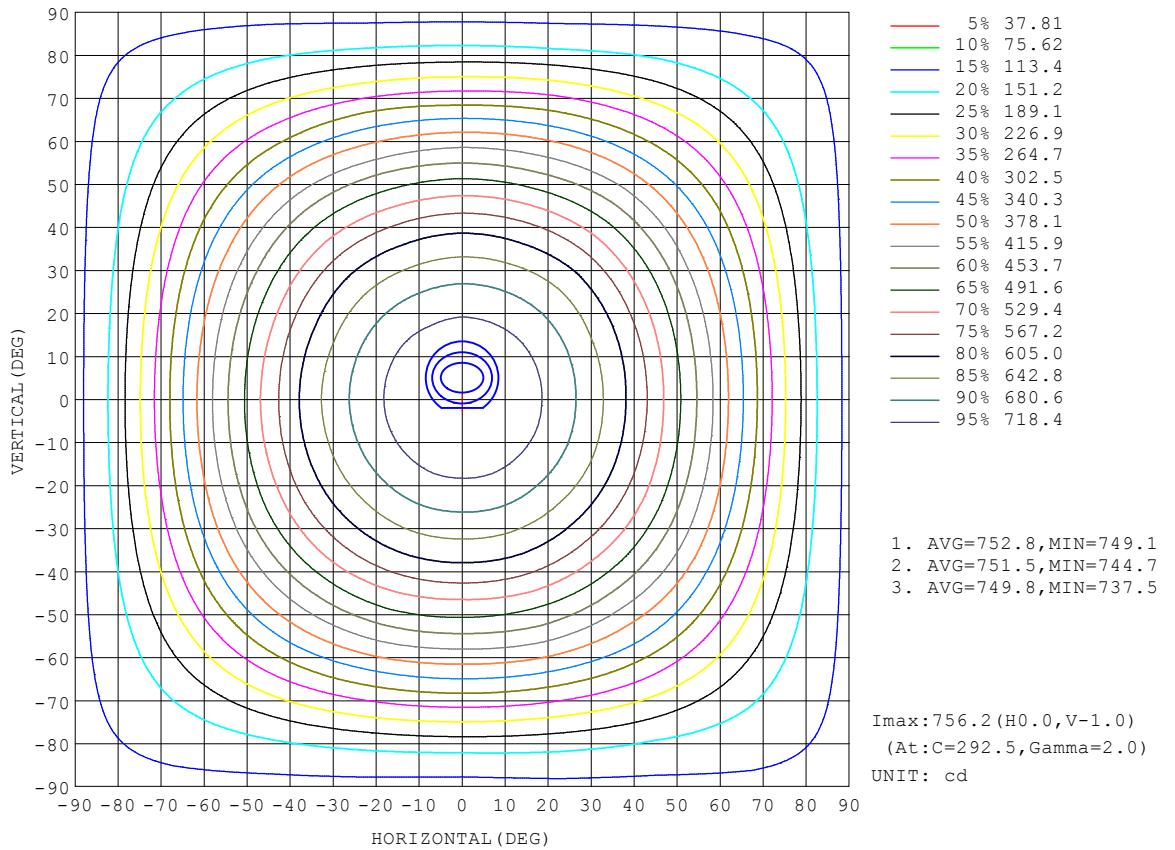
REFLECTANCE										
Ceiling	0.8	0.8	0.8	0.7	0.7	0.7	0.5	0.5	0.5	0
Walls	0.7	0.5	0.3	0.7	0.5	0.3	0.7	0.5	0.3	0
Working plane	0.2	0.2	0.2	0.2	0.2	0.2	0.2	0.2	0.2	0
ROOM INDEX	UTILIZATION FACTORS (PERCENT) $k(RI) \times RCR = 5$									
k = 0.60	50	38	31	49	38	31	47	37	30	24
0.80	60	47	40	58	47	39	55	45	38	30
1.00	68	56	48	66	54	47	62	55	46	37
1.25	75	63	55	73	62	54	68	59	52	43
1.50	80	69	61	77	67	60	73	64	57	47
2.00	87	77	69	84	75	68	79	71	65	54
2.50	91	82	75	88	80	73	82	75	70	58
3.00	95	87	80	92	84	78	85	79	74	61
4.00	99	92	87	96	89	84	89	84	80	66
5.00	102	96	91	98	93	88	91	87	83	69
ROOM INDEX	UF(total)									Direct
According to DIN EN 13032-2 2004			Suspended				SHRNOM = 1.25			

C Range: 0 - 360DEG
 C Interval: 22.5DEG
 Test Speed: HIGH
 Temperature:25.3DEG
 Operators:chen
 Test Date:2022-10-04

Range: 0 - 180DEG
 Interval: 1.0DEG
 Test System:EVERFINE GO-3000H_V1 SYSTEM V2.00.411
 Humidity:65.0%
 Test Distance:8.650m [K=1.0000]
 Remarks:

ISOCANDELA DIAGRAM

Test:U:120.01V I:0.3204A P:37.998W PF:0.9884 Freq:60.00Hz Lamp Flux:3009.63x1 lm		
NAME: ASD Lighting Corp	TYPE:ASD-LFC-MY-20D42S-RGB-SMARTLIGHT:	
SPEC.:ASD-LFC-MY-20D42S-RGB-SMART-3000K	DIM.:	SERIAL No.:
MFR.: ASD Lighting Corp	SUR.: -0.491	Shielding Angle:

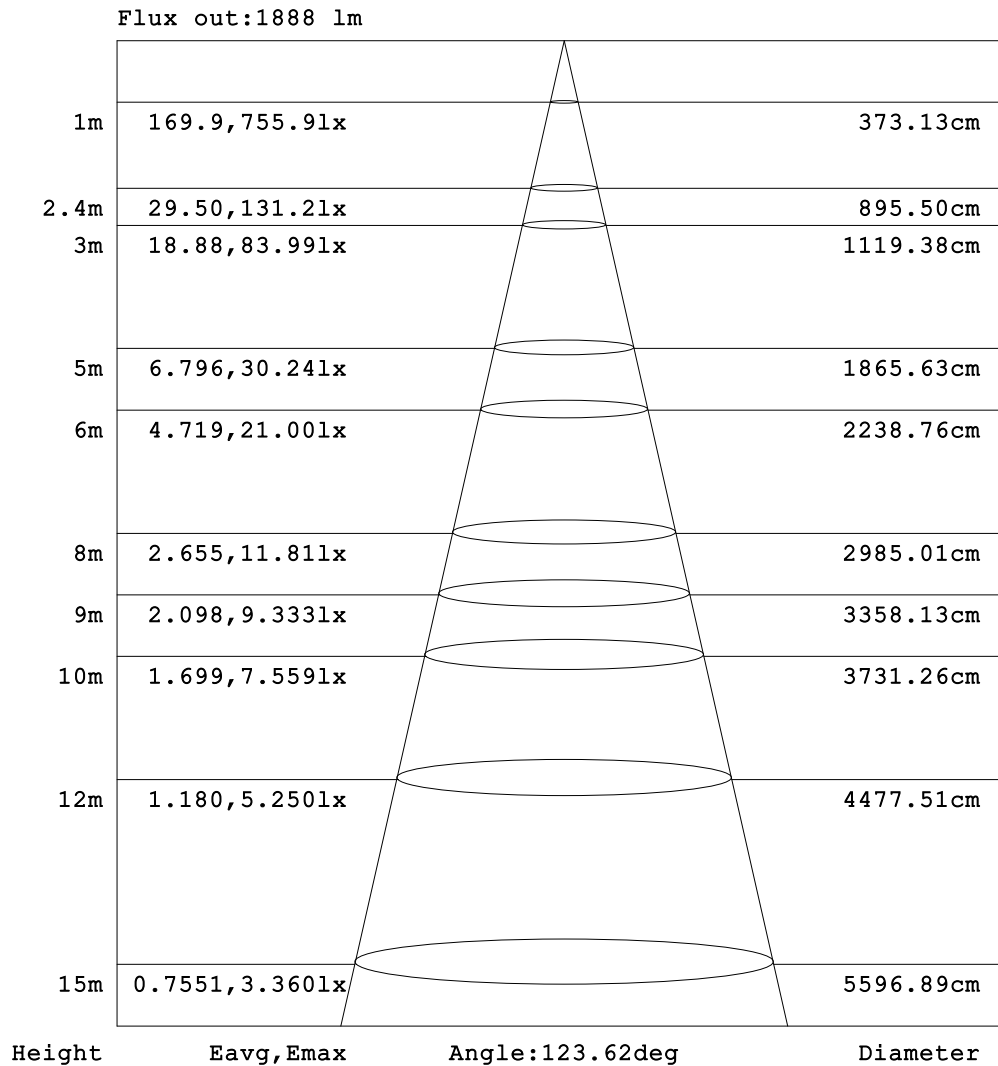


C Range: 0 - 360DEG
 C Interval: 22.5DEG
 Test Speed: HIGH
 Temperature:25.3DEG
 Operators:chen
 Test Date:2022-10-04

□ Range: 0 - 180DEG
 □ Interval: 1.0DEG
 Test System:EVERFINE GO-3000H_V1 SYSTEM V2.00.411
 Humidity:65.0%
 Test Distance:8.650m [K=1.0000]
 Remarks:

AAI Figure

Test:U:120.01V I:0.3204A P:37.998W PF:0.9884 Freq:60.00Hz Lamp Flux:3009.63x1 lm		
NAME: ASD Lighting Corp	TYPE:ASD-LFC-MY-20D42S-RGB-SMARTIGHT:	
SPEC.:ASD-LFC-MY-20D42S-RGB-SMART-3000K	DIM.:	SERIAL No.:
MFR.: ASD Lighting Corp	SUR.: -0.491	Shielding Angle:



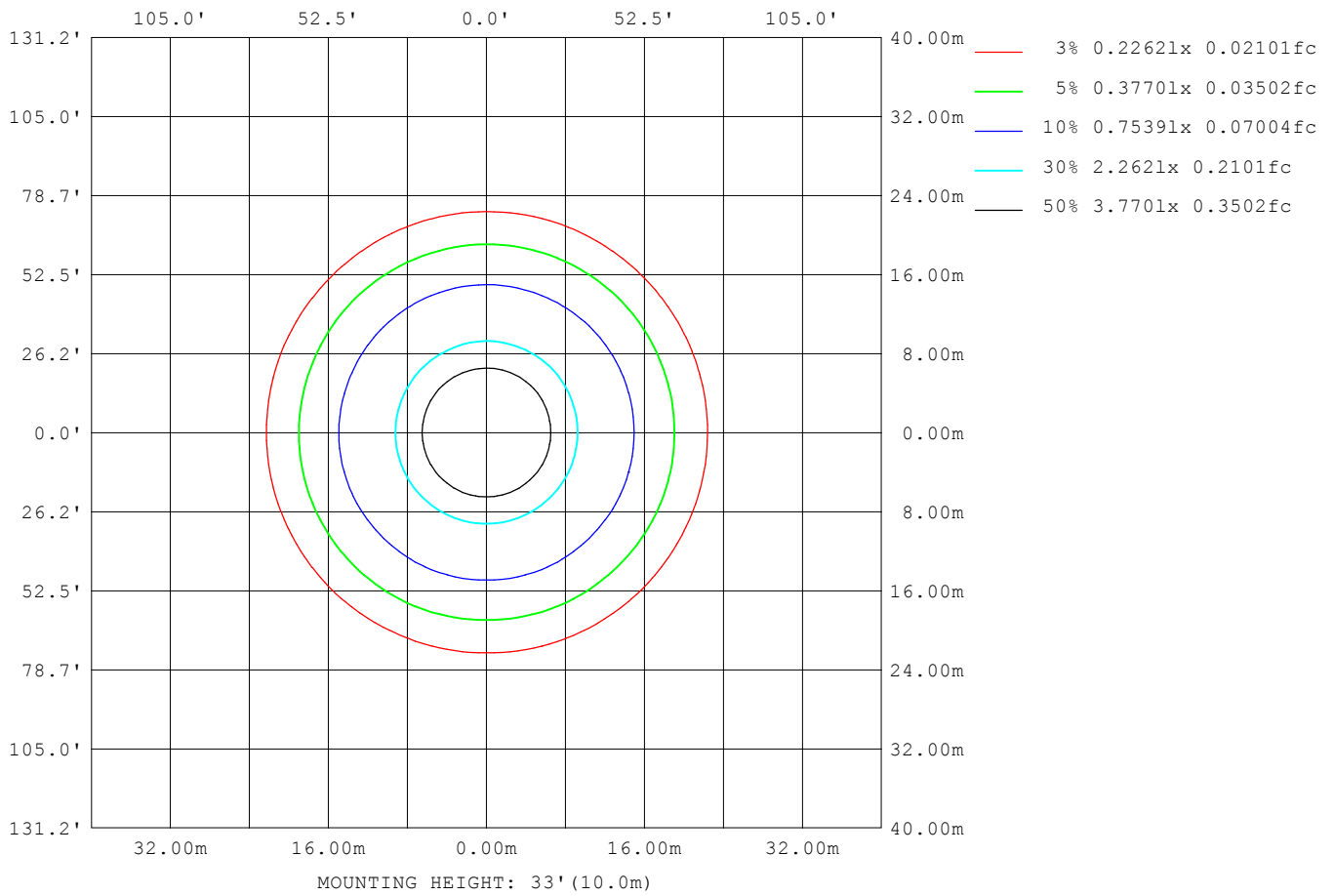
Note:The Curves indicate the illuminated area and the average illumination when the luminaire is at different distance.

C Range: 0 - 360DEG
 C Interval: 22.5DEG
 Test Speed: HIGH
 Temperature:25.3DEG
 Operators:chen
 Test Date:2022-10-04

Range: 0 - 180DEG
 Interval: 1.0DEG
 Test System:EVERFINE GO-3000H_V1 SYSTEM V2.00.411
 Humidity:65.0%
 Test Distance:8.650m [K=1.0000]
 Remarks:

ISOLUX DIAGRAM

Test:U:120.01V I:0.3204A P:37.998W PF:0.9884 Freq:60.00Hz Lamp Flux:3009.63x1 lm		
NAME: ASD Lighting Corp	TYPE:ASD-LFC-MY-20D42S-RGB-SMART:	
SPEC.:ASD-LFC-MY-20D42S-RGB-SMART-3000K	DIM.:	SERIAL No.:
MFR.: ASD Lighting Corp	SUR.: -0.491	Shielding Angle:



C Range: 0 - 360DEG
 C Interval: 22.5DEG
 Test Speed: HIGH
 Temperature:25.3DEG
 Operators:chen
 Test Date:2022-10-04

Range: 0 - 180DEG
 Interval: 1.0DEG
 Test System:EVERFINE GO-3000H_V1 SYSTEM V2.00.411
 Humidity:65.0%
 Test Distance:8.650m [K=1.0000]
 Remarks:

LED Avg.L Report

Test:U:120.01V I:0.3204A P:37.998W PF:0.9884 Freq:60.00Hz Lamp Flux:3009.63x1 lm		
NAME: ASD Lighting Corp	TYPE:ASD-LFC-MY-20D42S-RGB-SMARTIGHT:	
SPEC.:ASD-LFC-MY-20D42S-RGB-SMART-3000K	DIM.:	SERIAL No.:
MFR.: ASD Lighting Corp	SUR.: -0.491	Shielding Angle:

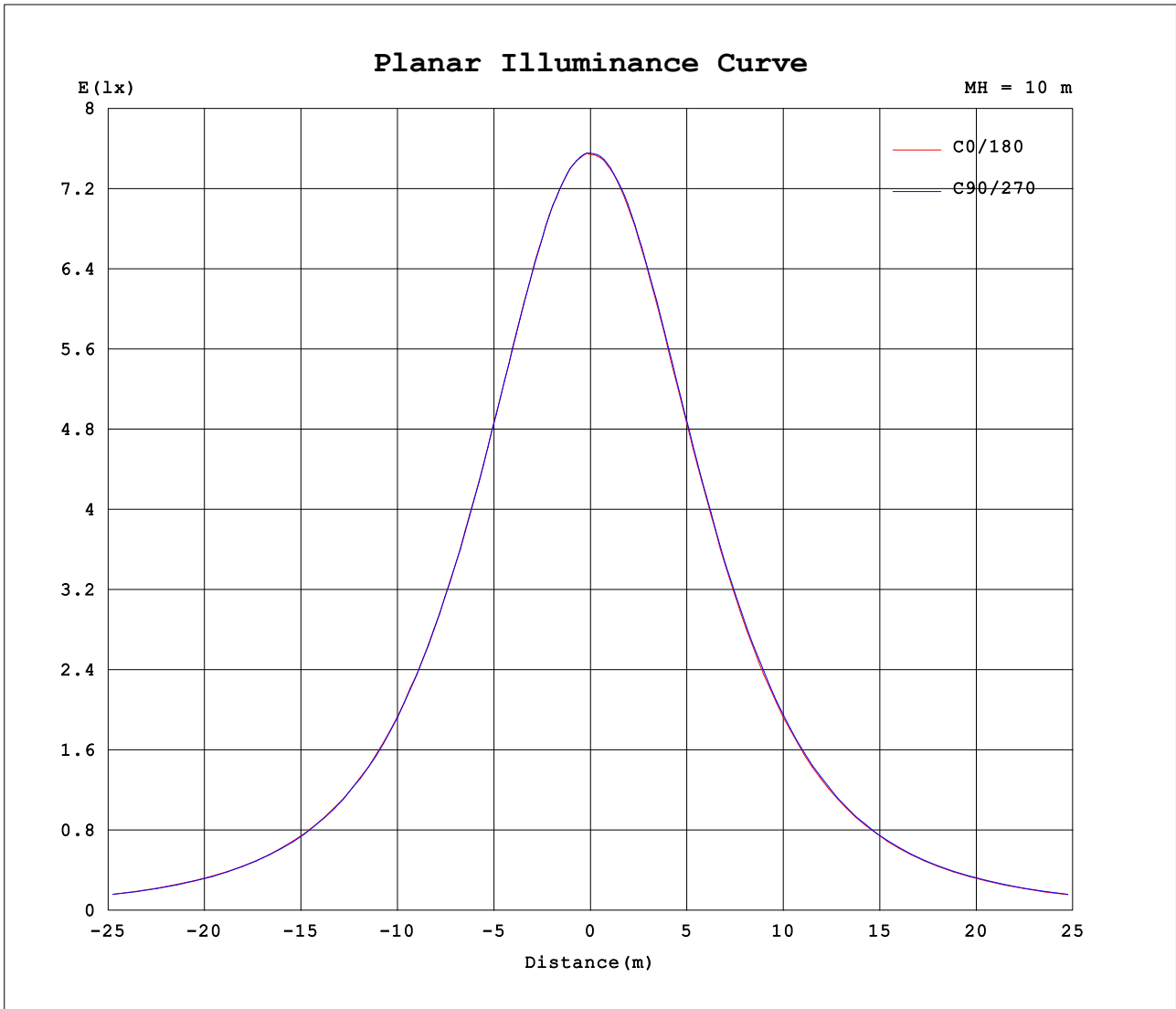
AvgL	cd/m2
L_0~180 (65) av	13435
L_0~180 (75) av	14577
L_0~180 (85) av	25089
L_90~270 (65) av	13427
L_90~270 (75) av	14527
L_90~270 (85) av	24598
L_45 (65) av	13429
L_45 (75) av	14584
L_45 (85) av	24864

Standard: GB/T 29293-2012

C Range: 0 - 360DEG
 C Interval: 22.5DEG
 Test Speed: HIGH
 Temperature:25.3DEG
 Operators:chen
 Test Date:2022-10-04

Range: 0 - 180DEG
 Interval: 1.0DEG
 Test System:EVERFINE GO-3000H_V1 SYSTEM V2.00.411
 Humidity:65.0%
 Test Distance:8.650m [K=1.0000]
 Remarks:

Planar Illuminance Curve



C Range: 0 - 360DEG
 C Interval: 22.5DEG
 Test Speed: HIGH
 Temperature:25.3DEG
 Operators:chen
 Test Date:2022-10-04

Range: 0 - 180DEG
 Interval: 1.0DEG
 Test System:EVERFINE GO-3000H_V1 SYSTEM V2.00.411
 Humidity:65.0%
 Test Distance:8.650m [K=1.0000]
 Remarks:

LUMINOUS DISTRIBUTION INTENSITY DATA

Test:U:120.01V I:0.3204A P:37.998W PF:0.9884 Freq:60.00Hz Lamp Flux:3009.63x1 lm		
NAME: ASD Lighting Corp	TYPE:ASD-LFC-MY-20D42S-RGB-SMARTIGHT:	
SPEC.:ASD-LFC-MY-20D42S-RGB-SMART-3000K	DIM.:	SERIAL No.:
MFR.: ASD Lighting Corp	SUR.: -0.491	Shielding Angle:

Table--1

UNIT: cd

C (DEG) \ □ (DEG)	0	22.5	45	67.5	90	112.5	135	157.5	180	202.5	225	247.5	270	292.5	315	337.5			
0	754	755	756	756	755	755	756	756	754	755	756	756	755	755	756	756			
5	753	753	754	754	753	753	753	754	752	753	754	754	754	754	754	754			
10	745	746	747	746	745	745	744	745	745	745	746	746	747	746	747	746			
15	732	732	732	732	731	730	730	730	731	731	732	732	734	732	733	732			
20	712	713	712	713	711	711	710	710	711	711	713	714	714	713	714	713			
25	687	690	688	689	688	687	686	687	687	688	689	691	691	690	691	689			
30	660	661	659	661	658	660	658	658	660	659	662	660	663	662	664	663			
35	627	630	628	627	628	626	626	625	626	625	628	627	630	630	632	628			
40	590	592	589	590	588	592	591	588	590	588	593	590	594	594	597	592			
45	547	548	545	548	545	547	546	545	545	544	547	548	552	553	554	549			
50	500	500	498	500	496	499	497	499	498	497	499	500	504	504	504	500			
55	449	451	448	452	448	450	449	450	448	446	449	451	453	451	455	451			
60	398	397	397	398	396	397	397	400	395	395	395	399	400	400	402	400			
65	346	344	344	341	340	339	341	340	339	339	339	342	344	344	345	345			
70	288	287	286	283	283	283	283	283	281	281	281	285	283	286	290	288			
75	230	230	229	226	227	227	227	225	225	225	225	225	227	229	229	230			
80	176	177	175	174	172	172	172	175	172	172	173	173	172	172	175	174			
85	133	134	131	134	129	130	129	132	131	130	131	130	129	128	130	130			
90	106	107	105	106	104	105	104	105	105	104	104	103	103	102	103	104			
95	93.7	93.8	92.8	93.1	92.4	92.5	91.5	93.3	92.6	92.2	91.2	90.0	90.4	90.0	90.9	92.1			
100	89.9	89.1	88.5	88.9	88.6	88.3	87.8	88.8	88.1	87.2	86.5	86.5	86.9	86.7	87.0	88.2			
105	89.4	87.9	87.0	87.5	87.5	87.3	86.0	87.5	87.4	85.9	84.1	85.0	85.9	85.8	85.9	87.1			
110	88.8	86.1	85.3	86.0	85.9	84.8	84.0	84.8	86.3	83.1	82.1	82.6	84.1	84.3	84.4	85.5			
115	83.1	80.6	82.9	83.6	83.3	81.3	81.9	79.5	80.9	77.1	80.0	79.5	81.6	81.9	81.9	80.6			
120	78.7	76.7	79.1	80.2	80.2	77.7	79.2	75.9	75.6	73.2	77.7	76.4	78.5	78.0	78.6	76.2			
125	77.0	72.6	74.9	74.2	75.3	73.3	73.7	72.1	73.5	69.4	73.6	72.5	73.9	72.5	74.5	72.3			
130	73.9	68.0	67.3	67.9	68.6	68.0	65.7	67.6	70.5	65.2	65.9	67.5	68.5	66.9	67.2	67.9			
135	70.3	63.0	61.0	62.5	64.2	61.8	59.5	61.7	66.6	60.4	59.5	61.0	63.3	61.2	59.7	62.5			
140	67.2	59.0	57.3	56.8	61.8	56.1	56.5	57.7	63.7	56.4	55.6	54.9	60.3	56.4	56.0	58.6			
145	64.8	58.8	56.2	55.0	58.8	54.8	55.3	56.8	61.6	55.3	54.0	52.3	57.6	53.4	55.2	57.7			
150	62.4	58.5	55.4	53.9	56.3	54.2	55.0	55.7	59.4	55.1	53.8	52.4	55.1	52.9	54.3	57.0			
155	60.4	58.0	55.5	53.6	54.3	53.6	54.0	52.8	57.3	53.7	53.4	52.9	53.6	52.4	54.9	56.6			
160	60.4	58.9	56.0	53.4	53.7	53.8	53.5	53.0	56.5	52.8	52.3	54.4	53.4	51.6	54.1	57.3			
165	60.9	59.9	56.5	53.1	53.9	53.7	52.9	52.9	55.8	51.7	52.6	54.7	53.7	51.4	53.7	57.1			
170	63.4	63.4	61.9	56.2	58.3	59.3	60.0	57.3	60.0	57.2	59.5	59.9	57.2	55.5	59.5	61.4			
175	65.4	64.8	60.9	59.9	64.0	64.3	60.2	60.9	64.7	60.4	59.3	63.7	63.2	59.5	60.1	64.5			
180	67.4	64.3	63.3	63.9	68.0	64.2	63.6	64.3	67.4	64.3	63.3	63.9	68.0	64.2	63.6	64.2			

C Range: 0 - 360DEG
 C Interval: 22.5DEG
 Test Speed: HIGH
 Temperature:25.3DEG
 Operators:chen
 Test Date:2022-10-04

□ Range: 0 - 180DEG
 □ Interval: 1.0DEG
 Test System:EVERFINE GO-3000H_V1 SYSTEM V2.00.411
 Humidity:65.0%
 Test Distance:8.650m [K=1.0000]
 Remarks: