



LED STEP LIGHT

► **DESIGN & OPTIONS** - LED STEP LIGHT has a sleek, low-profile design with no visible hardware, allowing it to seamlessly blend into any setting. It features a corrosion resistant steel body and an integrated LED to adequately illuminate with no glare. Triac dimming features included. The 85° beam angle grants you smooth uniform lighting. It is also CCT selectable, letting you set it to 3,000K, 4,000K or 5,000K with a simple switch. Comes in a WHITE, BLACK or BRONZE finish.



Models with a built-in PIR motion sensor automatically turn off in the absence of motion.



Models with a built-in PC automatically turn on/off depending on the time of day.



Models with a built-in PC and built-in PIR motion sensor automatically turn on at night time when motion is detected.

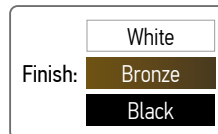
► **INSTALLATION** - Installation is quick and easy: just attach the fixture to the outlet box, connect the wires, and cover it with the face plate. It also includes a rubber gasket to seal against moisture. For outdoor applications where the fixture will face harsh weather and lots of rain, consider applying silicone caulking for water seal enhancement. Screws, wire nuts and all necessary installation accessories are provided. Refer to install instructions for detailed steps.

► **APPLICATION** - LED STEP LIGHTS are an ideal maintenance free solution for residential and commercial applications. This fixture creates a cozy ambience that is great for indoor and outdoor projects such as stairways, pathways, driveways, patios, corridors, decks, balconies, walkways, building perimeters or anywhere else landscape lighting is required. The fixture is Wet Location rated and suitable for severe weather conditions.

► **ENERGY SAVING & EFFICIENCY** - With a lifespan of 50,000 hours, these fixtures are made to last decades under normal operation! This fixture can cut your electric bill by up to 80% instantly and will save you a significant amount of money in its lifetime.

► **CERTIFICATION & WARRANTY** - Buy with confidence: ASD provides a 5-year limited warranty along with ETL certification to guarantee top quality products and safety!

Catalog number	
Notes	
Type	



AVAILABLE

AVAILABLE

Model	Watts	Voltage	Dimmable	Lumens	CCT	Finish	Dimensions (LxWxH)	Option
ASD-LSTL-H01W-D3CC-WH	3W	120 V	TRIAC	98/103/114 lm	3CCT (3,000/4,000/5,000 K)	White	4-3/4" x 1-9/16" x 2-3/4"	-
ASD-LSTL-H01W-D3CC-WH-4pack	3W	120 V	TRIAC	98/103/114 lm	3CCT (3,000/4,000/5,000 K)	White	4-3/4" x 1-9/16" x 2-3/4"	-
ASD-LSTL-H01W-D3CC-BZ	3W	120 V	TRIAC	98/103/114 lm	3CCT (3,000/4,000/5,000 K)	Oil rubbed bronze	4-3/4" x 1-9/16" x 2-3/4"	-
ASD-LSTL-H01W-D3CC-BZ-4pack	3W	120 V	TRIAC	98/103/114 lm	3CCT (3,000/4,000/5,000 K)	Oil rubbed bronze	4-3/4" x 1-9/16" x 2-3/4"	-
ASD-LSTL-H01W-D3CC-BK	3W	120 V	TRIAC	98/103/114 lm	3CCT (3,000/4,000/5,000 K)	Black	4-3/4" x 1-9/16" x 2-3/4"	-
ASD-LSTL-H01W-D3CC-BK-4pack	3W	120 V	TRIAC	98/103/114 lm	3CCT (3,000/4,000/5,000 K)	Black	4-3/4" x 1-9/16" x 2-3/4"	-
LSTL-MS WITH MOTION SENSOR								
ASD-LSTL-H01W-N3CC-MS-BZ	3W	120 V	-	98/103/114 lm	3CCT (3,000/4,000/5,000 K)	Oil rubbed bronze	4-3/4" x 1-3/4" x 2-3/4"	Motion sensor
ASD-LSTL-H01W-N3CC-MS-BK	3W	120 V	-	98/103/114 lm	3CCT (3,000/4,000/5,000 K)	Black	4-3/4" x 1-3/4" x 2-3/4"	Motion sensor
LSTL-PC WITH PHOTOCELL								
ASD-LSTL-H01W-N3CC-PC-BZ	3W	120 V	-	98/103/114 lm	3CCT (3,000/4,000/5,000 K)	Oil rubbed bronze	4-3/4" x 1-9/16" x 2-3/4"	Photocell
ASD-LSTL-H01W-N3CC-PC-BK	3W	120 V	-	98/103/114 lm	3CCT (3,000/4,000/5,000 K)	Black	4-3/4" x 1-9/16" x 2-3/4"	Photocell
LSTL-PC-MS WITH MOTION SENSOR AND PHOTOCELL								
ASD-LSTL-H01W-N3CC-PC-MS-BZ	3W	120 V	-	98/103/114 lm	3CCT (3,000/4,000/5,000 K)	Oil rubbed bronze	4-3/4" x 1-3/4" x 2-3/4"	Motion sensor, Photocell
ASD-LSTL-H01W-N3CC-PC-MS-BK	3W	120 V	-	98/103/114 lm	3CCT (3,000/4,000/5,000 K)	Black	4-3/4" x 1-3/4" x 2-3/4"	Motion sensor, Photocell

For most up-to-date spec sheets please refer to asd-lighting.com

ASD LIGHTING CORP

E-mail: orders@asd-lighting.com | Web site: www.asd-lighting.com





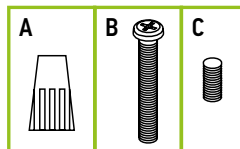
LED STEP LIGHT

PRODUCT SPECIFICATIONS:

Construction & Materials					
Housing	Aluminum				
Lens	Acrylic				
Finish	White, Oil rubbed bronze, Black				
Weight	ASD-LSTL-H01W-D3CC-WH	0.3 lb (0.1 kg)			
	ASD-LSTL-H01W-D3CC-WH-4pack	1.3 lb (0.6 kg)			
	ASD-LSTL-H01W-D3CC-BZ	0.3 lb (0.1 kg)			
	ASD-LSTL-H01W-D3CC-BZ-4pack	1.3 lb (0.6 kg)			
	ASD-LSTL-H01W-D3CC-BK	0.3 lb (0.1 kg)			
	ASD-LSTL-H01W-D3CC-BK-4pack	1.3 lb (0.6 kg)			
	ASD-LSTL-H01W-N3CC-MS-BZ	0.3 lb (0.1 kg)			
	ASD-LSTL-H01W-N3CC-MS-BK				
	ASD-LSTL-H01W-N3CC-PC-BZ				
	ASD-LSTL-H01W-N3CC-PC-BK				
	ASD-LSTL-H01W-N3CC-PC-MS-BZ				
	ASD-LSTL-H01W-N3CC-PC-MS-BK				
Environmental system					
Work environment	Suitable for Wet Locations				
Operating temperature	ASD-LSTL-H01W-D3CC-WH	-40°F to 113°F (-40°C to 45°C)			
	ASD-LSTL-H01W-D3CC-WH-4pack				
	ASD-LSTL-H01W-D3CC-BZ				
	ASD-LSTL-H01W-D3CC-BZ-4pack				
	ASD-LSTL-H01W-D3CC-BK				
	ASD-LSTL-H01W-D3CC-BK-4pack				
	ASD-LSTL-H01W-N3CC-MS-BZ	-4°F to 113°F (-20°C to 45°C)			
	ASD-LSTL-H01W-N3CC-MS-BK				
	ASD-LSTL-H01W-N3CC-PC-BZ				
	ASD-LSTL-H01W-N3CC-PC-BK				
	ASD-LSTL-H01W-N3CC-PC-MS-BZ				
	ASD-LSTL-H01W-N3CC-PC-MS-BK				
L-70 Life	> 50,000 hrs				
Optical system					
Luminous flux	98/103/114 lm				
Color temperature	3CCT (3,000/4,000/5,000 K)				
CRI	> 80				
Electrical system					
Input voltage	120 V				
Max input current	0.63 A				
Inrush current (Action time)	0.02 A (0.02 S)				
Off state power	0W				
Power consumption	3W				
Power factor	> 0.9				
Output voltage	12-20 V				
Max output current	0.14 A				
Surge protection DM/CM	1.25 kV / 1.25 kV				
Dimming range					
10-100%					
Dimming compatible controls					
Brand	Lutron		Leviton		
Models	MACL-153MLH	STCL-153PH	DSL06		
	DVCL-153PPR	P-PKG1W	RNL06		
Regular and voluntary certifications					
5-year limited warranty					
cETLus certified 4001256					

PACKAGE CONTENTS:

Description	Q-ty
LED Step Light	1 (4 for 4pack)
Wire nut (A)	3
Screw (B)	2
Hexagon screw (C)	1
Box	1



BUILT-IN MOTION SENSOR INFORMATION



The fixtures with built-in PIR motion sensor automatically turn off in the absence of motion.

- The light is ON for 30 seconds after a motion is detected
- Max. detection range 13 ft (4m).

Specifications	Model: D203S
Operating voltage	3-15 V
Hold time	30 S
Operating temperature	- 86°F to 158°F (-30°C to 70°C)

BUILT-IN PHOTOCELL INFORMATION



The fixtures with a built-in photocell automatically turn off during daylight hours.

- The light is always ON when luminance is < 90 lux (nighttime).
- The light is always OFF when luminance is > 90 lux (daytime).

Specifications	Model: PT3A4.B
Operating voltage	30 V
Hold time	30 S
Operating temperature	- 86°F to 185°F (-30°C to 85°C)

BUILT-IN MOTION SENSOR AND PHOTOCELL INFORMATION



The fixtures with a motion sensor and a built-in Dusk-to-Dawn sensor automatically turn off the motion sensor during daylight hours regardless of motion detection.



The light is ON when luminance is < 90 lux (nighttime) and remains on for 30 seconds after a motion is detected.

- The light is always OFF when luminance is > 90 lux (daytime).
- Max. detection range 26 ft.

Specifications	Model: D203S	Model: PT3A4.B
Operating voltage	3-15 V	30 V
Hold time	30 S	30 S
Operating temperature	- 86°F to 158°F (-30°C to 70°C)	- 86°F to 185°F (-30°C to 85°C)

For most up-to-date spec sheets please refer to asd-lighting.com



LED STEP LIGHT

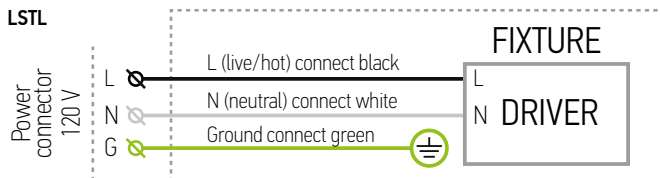
INSTALLATION GUIDE

IMPORTANT SAFETY INFORMATION:

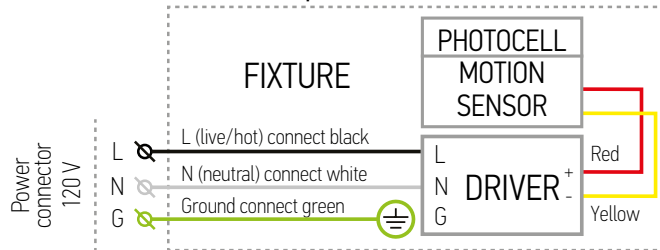
Please read all the instructions below before installation.

- ▶ Make sure that the supply voltage corresponds to the rated product voltage.
- ▶ The product must be installed by a qualified electrician in accordance with the National Electrical Code and corresponding local codes.
- ▶ If the product is damaged, do not use it.

ELECTRICAL SCHEMATIC DIAGRAM:



LSTL-MS/LSTL-PC/LSTL-PC-MS with photocell and motion sensor



⚠ WARNING

RISK OF PERSONAL INJURY – READ and follow all WARNINGS and installation instructions. Keep or give to the owner for future reference.

Risk of cuts: Wear gloves to prevent cuts or abrasions when removing from carton, handling, installing, and maintaining this product.

Risk of electric shock: This product must be installed in accordance with the applicable installation code by a person familiar with the construction and operation of the product and the hazards involved.

Risk of Fire: Minimum 194°F supply conductors. Consult a qualified electrician to ensure correct branch circuit conductor.

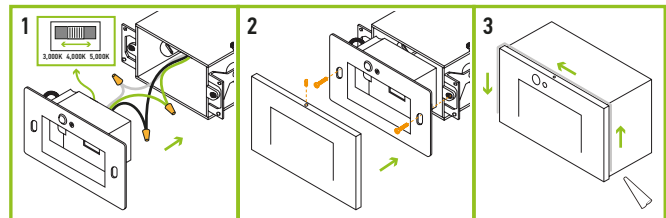
ASD® assumes no responsibility for claims arising out of improper or careless installation or handling of this product.

INSTALLATION STEPS:

1. Choose either 3,000K, 4,000K, or 5,000K with a simple switch. Pull the supply wires out from the outlet box. Connect the wires: Black to Black, White to White, Green to Green. Secure the connection with wire nuts. Tuck all the wires back inside the outlet box.

2. Attach the mounting bracket to the outlet box using screws. Place the face plate on the mounting bracket and affix with the hexagon screw.

3. For outdoor locations please use silicone (not included) as shown in the picture below.



ORDERING INFORMATION

Model	UPC	Pcs. per carton	Carton size	Carton weight	GTIN 14
ASD-LSTL-H01W-D3CC-WH	810050736381	12	12" x 6.1" x 8.9"	5.8 lb	30810050736382
ASD-LSTL-H01W-D3CC-WH-4pack	810050737715	3	11.8" x 8.1" x 8.9"	4.5 lb	10810050737712
ASD-LSTL-H01W-D3CC-BZ	810050736374	12	12" x 6.1" x 8.9"	5.8 lb	30810050736375
ASD-LSTL-H01W-D3CC-BZ-4pack	810050737708	3	11.8" x 8.1" x 8.9"	4.5 lb	10810050737705
ASD-LSTL-H01W-D3CC-BK	810050737685	12	12" x 6.1" x 8.9"	5.8 lb	10810050737682
ASD-LSTL-H01W-D3CC-BK-4pack	810050737692	3	11.8" x 8.1" x 8.9"	4.5 lb	10810050737699
LSTL-MS WITH MOTION SENSOR					
ASD-LSTL-H01W-N3CC-MS-BZ	810050736404	4	8.3" x 6.1" x 6.1"	2.1 lb	30810050736405
ASD-LSTL-H01W-N3CC-MS-BK	810050737739	4	8.3" x 6.1" x 6.1"	2.1 lb	10810050737736
LSTL-PC WITH PHOTOCELL					
ASD-LSTL-H01W-N3CC-PC-BZ	810050736398	4	8.3" x 6.1" x 6.1"	2.1 lb	30810050736399
ASD-LSTL-H01W-N3CC-PC-BK	810050737722	4	8.3" x 6.1" x 6.1"	2.1 lb	10810050737729
LSTL-PC-MS WITH MOTION SENSOR AND PHOTOCELL					
ASD-LSTL-H01W-N3CC-PC-MS-BZ	810050736411	4	8.3" x 6.1" x 6.1"	2.1 lb	30810050736412
ASD-LSTL-H01W-N3CC-PC-MS-BK	810050737746	4	8.3" x 6.1" x 6.1"	2.1 lb	10810050737743

For most up-to-date spec sheets please refer to asd-lighting.com