



LED OUTDOOR WALL SCONCE

► **DESIGN & OPTIONS** - LED OUTDOOR WALL SCONCE has a modern, multipurpose design and a stylish look with efficient lighting. The durable steel base is highly resistant to rust, and the PMMA lens is UV resistant. It is designed to operate on 120-277V circuits. The fixture includes a CCT option, letting you choose either 3,000K, 4,000K or 5,000K with a simple switch. The 160° beam angle grants you smooth and even lighting. It comes in three different sizes: 12", 18", and 24" with a BRONZE finish.

► **INSTALLATION** - Installation is quick and easy: just attach the mounting plate to the outlet box with screws, connect the wires, and fasten the fixture to the mounting plate. Screws, wire nuts, and all necessary installation accessories are provided. Refer to install instructions for detailed steps.

► **APPLICATION** - This LED OUTDOOR WALL SCONCE is an ideal maintenance free solution for residential and commercial installations. It creates a cozy ambience that is great for both indoor and outdoor projects such as decks, front doors, porches, patios, gardens, corridors, balconies, villas, and walkways. The fixture is Wet Locations rated and suitable for severe weather conditions.

► **ENERGY SAVINGS & EFFICIENCY** - With a lifespan of 50,000 hours, these fixtures are made to last decades under normal operation! This fixture can cut your electric bill by up to 80% instantly and will save you a significant amount of money in its lifetime.

► **CERTIFICATION & WARRANTY** - Buy with confidence: ASD provides a 5-year limited warranty along with ETL certification to guarantee top quality products and safety!

Energy Star classification allow participation in rebates; please check the rebate programs available in your state.

Catalog number	
Notes	
Type	



Model	Size	Watts	Voltage	Dimmable	Lumens	CCT	Finish	Dimensions (LxWxH)
ASD-OLWS-22-MV-12N15CC-BZ	12 inch	15W	120-277 V	-	790/1,010/928 lm	3CCT (3,000/4,000/5,000 K)	Oil rubbed bronze	12" x 6" x 4"
ASD-OLWS-22-MV-18N20CC-BZ	18 inch	20W	120-277 V	-	1,335/1,515/1,403 lm	3CCT (3,000/4,000/5,000 K)	Oil rubbed bronze	18" x 6" x 4"
ASD-OLWS-22-MV-24N23CC-BZ	24 inch	23W	120-277 V	-	1,600/1,970/1,775 lm	3CCT (3,000/4,000/5,000 K)	Oil rubbed bronze	24" x 6" x 4"

PRODUCT SPECIFICATIONS:

Construction & Materials				Electrical system			
Housing	Steel			Input voltage	120-277 V		
Lens	PMMA			Max input current	ASD-OLWS-22-MV-12N15CC-BZ	0.15 A	
Finish	Oil rubbed bronze				ASD-OLWS-22-MV-18N20CC-BZ	0.35 A	
Weight	ASD-OLWS-22-MV-12N15CC-BZ	3.3 lb (1.5 kg)			ASD-OLWS-22-MV-24N23CC-BZ	0.118 A (0.2 S)	
	ASD-OLWS-22-MV-18N20CC-BZ	4.4 lb (2 kg)		ASD-OLWS-22-MV-12N15CC-BZ	0.164 A (0.2 S)		
	ASD-OLWS-22-MV-24N23CC-BZ	5.6 lb (2.6 kg)		ASD-OLWS-22-MV-18N20CC-BZ			
Environmental system				Off state power	0W		
Work environment	Suitable for Wet Locations						
Operating temperature	-40°F to 113°F (-40°C to 45°C)						
L-70 Life	> 50,000 hrs			Power consumption	ASD-OLWS-22-MV-12N15CC-BZ	15W	
Optical system					ASD-OLWS-22-MV-18N20CC-BZ	20W	
Luminous flux	ASD-OLWS-22-MV-12N15CC-BZ	790/1,010/928 lm			ASD-OLWS-22-MV-24N23CC-BZ	23W	
	ASD-OLWS-22-MV-18N20CC-BZ	1,335/1,515/1,403 lm		Output voltage	ASD-OLWS-22-MV-12N15CC-BZ	18-36 V	
	ASD-OLWS-22-MV-24N23CC-BZ	1,600/1,970/1,775 lm			ASD-OLWS-22-MV-18N20CC-BZ	30-38 V	
Color temperature	3CCT (3,000/4,000/5,000 K)				ASD-OLWS-22-MV-24N23CC-BZ		
CRI	> 80			Driver output current	ASD-OLWS-22-MV-12N15CC-BZ	0.35 A	
Regular and voluntary certifications					ASD-OLWS-22-MV-18N20CC-BZ	0.58 A	
5-year limited warranty					ASD-OLWS-22-MV-24N23CC-BZ		
cETLus certified	4001256			Surge protection DM/CM	1.5 kV / 1.5 kV		
Energy Star listed							

For most up-to-date spec sheets please refer to asd-lighting.com

ASD LIGHTING CORP

E-mail: orders@asd-lighting.com | Web site: www.asd-lighting.com

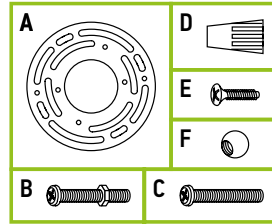




LED OUTDOOR WALL SCONCE

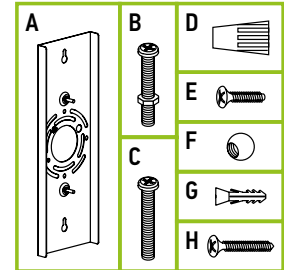
PACKAGE CONTENTS FOR 12" AND 18" MODELS:

Description	Q-ty
LED Outdoor Wall Sconce	1
Mounting plate (A)	1
Mounting screw (B)	2
Outlet box screw (C)	2
Wire nut (D)	3
Short screw (E)	2
Decorative cap nut (F)	2
Box	1



PACKAGE CONTENTS FOR 24" MODELS:

Description	Q-ty
LED Outdoor Wall Sconce	1
Mounting plate (A)	1
Mounting screw (B)	2
Outlet box screw (C)	2
Wire nut (D)	3
Short screw (E)	2
Decorative cap nut (F)	2
Anchor (G)	2
Self-tapping screw (H)	2
Box	1



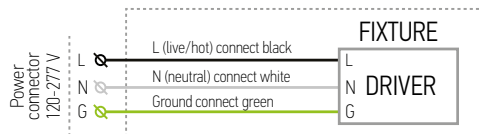
INSTALLATION GUIDE

IMPORTANT SAFETY INFORMATION:

Please read all the instructions below before installation.

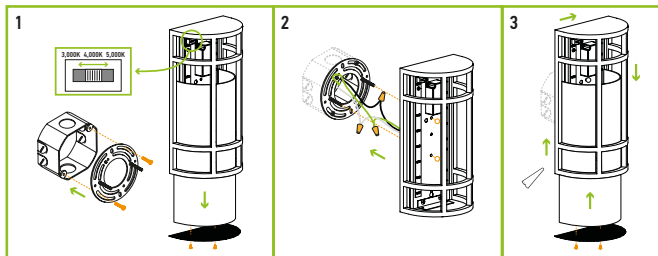
- ▶ Make sure that the supply voltage corresponds to the rated product voltage.
- ▶ The product must be installed by a qualified electrician in accordance with the National Electrical Code and corresponding local codes.
- ▶ If the product is damaged, do not use it.

ELECTRICAL SCHEMATIC DIAGRAM:



INSTALLATION STEPS 12" AND 18":

1. Screw the two mounting screws onto the mounting plate. Attach the mounting plate to the outlet box using screws. Make sure the threads of the mounting screws are facing outside when the mounting plate is attached to the outlet box. Remove the bottom cover and pull out the lens. Choose preferred color temperature by adjusting the switch position.
2. Connect the wires: Black to Black, White to White, Ground to Ground. Secure the connection with wire nuts. Place the fixture on the wall by aligning the protruding mounting screws through the holes on the fixture. Tighten each mounting screw with a decorative cap nut.
3. Put the lens back and attach the bottom cover with two short screws. For outdoor locations please use silicone (not included).



⚠ WARNING

RISK OF PERSONAL INJURY – READ and follow all WARNINGS and installation instructions. Keep or give to the owner for future reference.

Risk of cuts: Wear gloves to prevent cuts or abrasions when removing from carton, handling, installing, and maintaining this product.

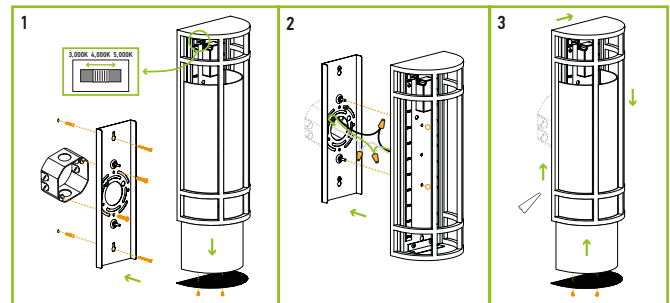
Risk of electric shock: This product must be installed in accordance with the applicable installation code by a person familiar with the construction and operation of the product and the hazards involved.

Risk of Fire: Minimum 194°F supply conductors. Consult a qualified electrician to ensure correct branch circuit conductor.

ASD® assumes no responsibility for claims arising out of improper or careless installation or handling of this product.

INSTALLATION STEPS 24":

1. Remove the bottom cover and pull out the lens. Choose preferred color temperature by adjusting the switch position. Attach the mounting plate to the outlet box and mark the location of the holes for the wall anchors in the narrow ends of the keyholes. Remove the mounting plate and drill two appropriate sized holes for anchors, insert anchors into the holes, twist the two self-tapping screws into the anchors. Attach the mounting plate to the outlet box using two screws and tighten self-tapping screws.
2. Connect the wires: Black to Black, White to White, Ground to Ground. Secure the connection with wire nuts. Place the fixture on the wall by aligning the protruding mounting screws through the holes on the fixture. Tighten each mounting screw with a decorative cap nut.
3. Put the lens back and attach the bottom cover with two short screws. For outdoor locations please use silicone (not included).



ORDERING INFORMATION

Model	UPC	Pcs. per carton	Carton size	Carton weight	GTIN 14
ASD-OLWS-22-MV-12N15CC-BZ	810050730679	4	15.7" x 14" x 11.6"	17.3 lb	30810050730670
ASD-OLWS-22-MV-18N20CC-BZ	810050730686	4	19.9" x 15.7" x 11.6"	20.2 lb	30810050730687
ASD-OLWS-22-MV-24N23CC-BZ	810050730693	4	26" x 15.7" x 11.6"	26.5 lb	30810050730694

For most up-to-date spec sheets please refer to asd-lighting.com

ASD LIGHTING CORP

E-mail: orders@asd-lighting.com | Web site: www.asd-lighting.com

