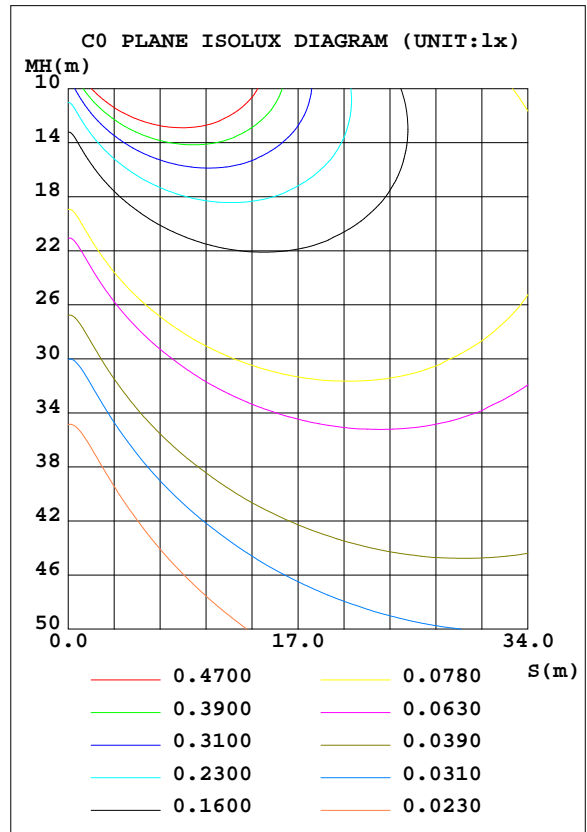
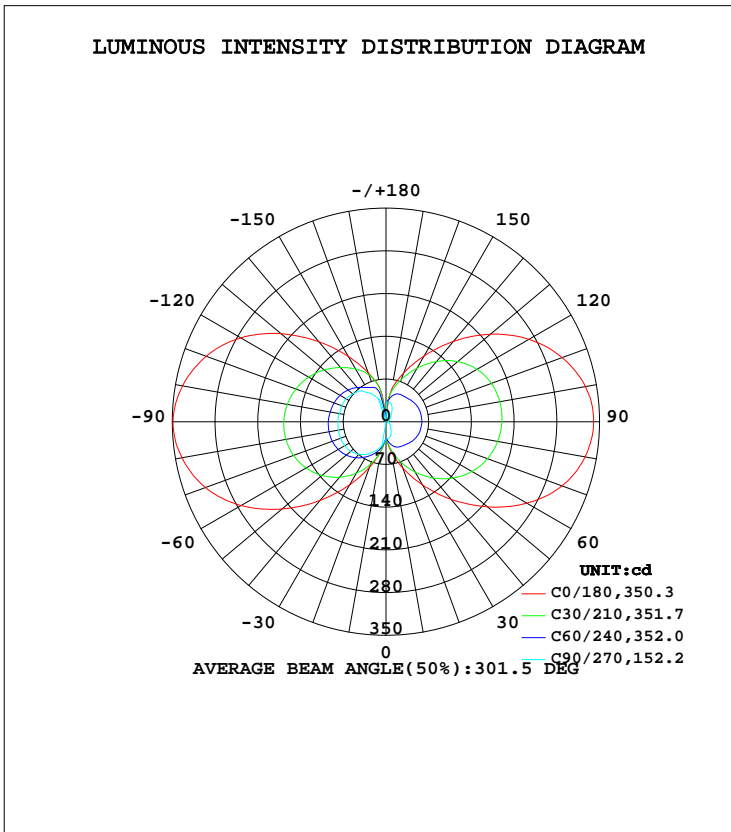


LUMINAIRE PHOTOMETRIC TEST REPORT

Test:U:120.0V I:0.2103A P:24.92W PF:0.9876 Freq:60.00Hz Lamp Flux:1548.07x1 lm		
NAME:	TYPE:LED	WEIGHT:
SPEC.:ASD-LWS27B-24D24BK_5000K	DIM.:	SERIAL No.:
MFR.: ASD Lighting Corp	SUR.:	Shielding Angle:

DATA OF LAMP		PHOTOMETRIC DATA Eff: 62.12 lm/W			
MODEL	ASD-LWS27B-24D24BK	I _{max} (cd)	349.0	S/MH(C0/180)	4.90
NOMINAL POWER(W)	24	LOR(%)	100.0	S/MH(C90/270)	2.85
RATED VOLTAGE(V)	120-277	TOTAL FLUX(lm)	1548.1	η UP, DN(C0-180)	23.8, 23.2
NOMINAL FLUX(lm)	1548.07	CIE CLASS	DIFFUSE	η UP, DN(C180-360)	26.2, 26.8
LAMPS INSIDE	1	η up(%)	50.0	CIBSE SHR NOM	1.25
TEST VOLTAGE(V)	120	η down(%)	50.0	CIBSE SHR MAX	1.35



C Range: 0 - 360DEG
 C Interval: 15.0DEG
 Test Speed: HIGH
 Temperature: 24.9DEG
 Operators: Alan Wang
 Test Date: 14 December 2023

γ Range: 0 - 180DEG
 γ Interval: 1.0DEG
 Test System: EVERFINE GO-R5000_V2 SYSTEM V2.00.416
 Humidity: 42.0%
 Test Distance: 2.500m [K=1.0423]
 Remarks:

ZONAL FLUX DIAGRAM

ZONAL FLUX DIAGRAM:

γ	C0	C45	C90	C135	C180	C225	C270	C315	γ	Φ zone	Φ total	%lum,lamp
10	49.68	41.24	27.45	39.96	48.54	46.36	40.23	47.82	0- 10	3.503	3.503	0.23,0.23
20	80.58	57.11	23.59	56.64	79.40	65.04	50.62	68.74	10- 20	14.86	18.36	1.19,1.19
30	119.2	69.41	16.89	70.78	119.4	80.33	61.14	86.28	20- 30	32.30	50.66	3.27,3.27
40	166.2	78.03	12.03	81.29	168.3	94.10	69.68	100.8	30- 40	55.39	106.0	6.85,6.85
50	216.8	84.94	9.143	89.51	222.5	105.6	75.53	112.6	40- 50	83.14	189.2	12.2,12.2
60	266.8	90.69	6.951	96.00	274.4	114.7	78.22	122.2	50- 60	112.9	302.1	19.5,19.5
70	307.0	94.72	5.124	100.6	314.8	120.8	79.40	129.2	60- 70	140.3	442.4	28.6,28.6
80	331.2	97.20	3.655	103.2	339.3	124.0	79.30	133.4	70- 80	160.6	603.0	39,39
90	340.2	98.53	3.258	104.8	348.9	124.7	78.81	134.7	80- 90	171.4	774.4	50,50
100	332.0	98.35	3.730	104.6	338.4	122.4	77.73	132.9	90-100	171.2	945.5	61.1,61.1
110	307.2	97.14	5.375	103.2	313.8	118.2	76.89	129.0	100-110	159.9	1105	71.4,71.4
120	270.4	94.30	7.479	99.91	274.9	111.6	75.53	121.7	110-120	139.8	1245	80.4,80.4
130	223.3	89.69	10.00	93.87	224.8	102.8	71.07	110.5	120-130	112.9	1358	87.7,87.7
140	171.9	83.64	13.27	85.69	171.3	92.19	66.06	98.14	130-140	83.41	1442	93.1,93.1
150	124.4	75.25	19.23	75.35	123.6	81.83	54.51	83.19	140-150	55.83	1497	96.7,96.7
160	85.23	61.98	28.12	61.63	85.50	73.47	41.63	64.38	150-160	33.09	1531	98.9,98.9
170	53.62	45.15	32.49	44.85	53.20	41.15	10.53	27.33	160-170	15.18	1546	99.8,99.8
180	0	0	0	0	0.0869	0.0985	0.1178	0.0791	170-180	2.378	1548	100,100
DEG	LUMINOUS INTENSITY:cd									UNIT:lm		

Conical surface Flux(90deg): 143.94 lm

%lum = 9.3%

%lamp = 9.3%

Conical surface Flux(120deg): 302.1 lm

%lum = 19.5%

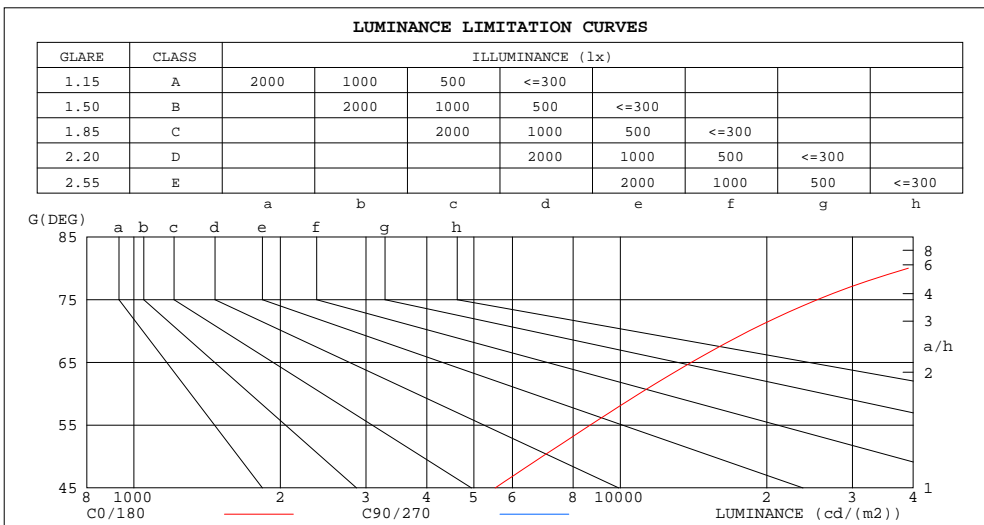
%lamp = 19.5%

C Range: 0 - 360DEG
 C Interval: 15.0DEG
 Test Speed: HIGH
 Temperature: 24.9DEG
 Operators: Alan Wang
 Test Date: 14 December 2023

γ Range: 0 - 180DEG
 γ Interval: 1.0DEG
 Test System: EVERFINE GO-R5000_V2 SYSTEM V2.00.416
 Humidity: 42.0%
 Test Distance: 2.500m [K=1.0423]
 Remarks:

LUMINANCE LIMITATION CURVES

Test:U:120.0V I:0.2103A P:24.92W PF:0.9876 Freq:60.00Hz Lamp Flux:1548.07x1 lm		
NAME:	TYPE:LED	WEIGHT:
SPEC.:ASD-LWS27B-24D24BK_5000K	DIM.:	SERIAL No.:
MFR.: ASD Lighting Corp	SUR.:	Shielding Angle:



LUMINANCE cd/(m2)		
G(DEG)	C0/180	C90/270
85	79380	778
80	39084	431
75	25432	343
70	18393	307
65	13999	291
60	10936	285
55	8670	285
50	6913	291
45	5529	303

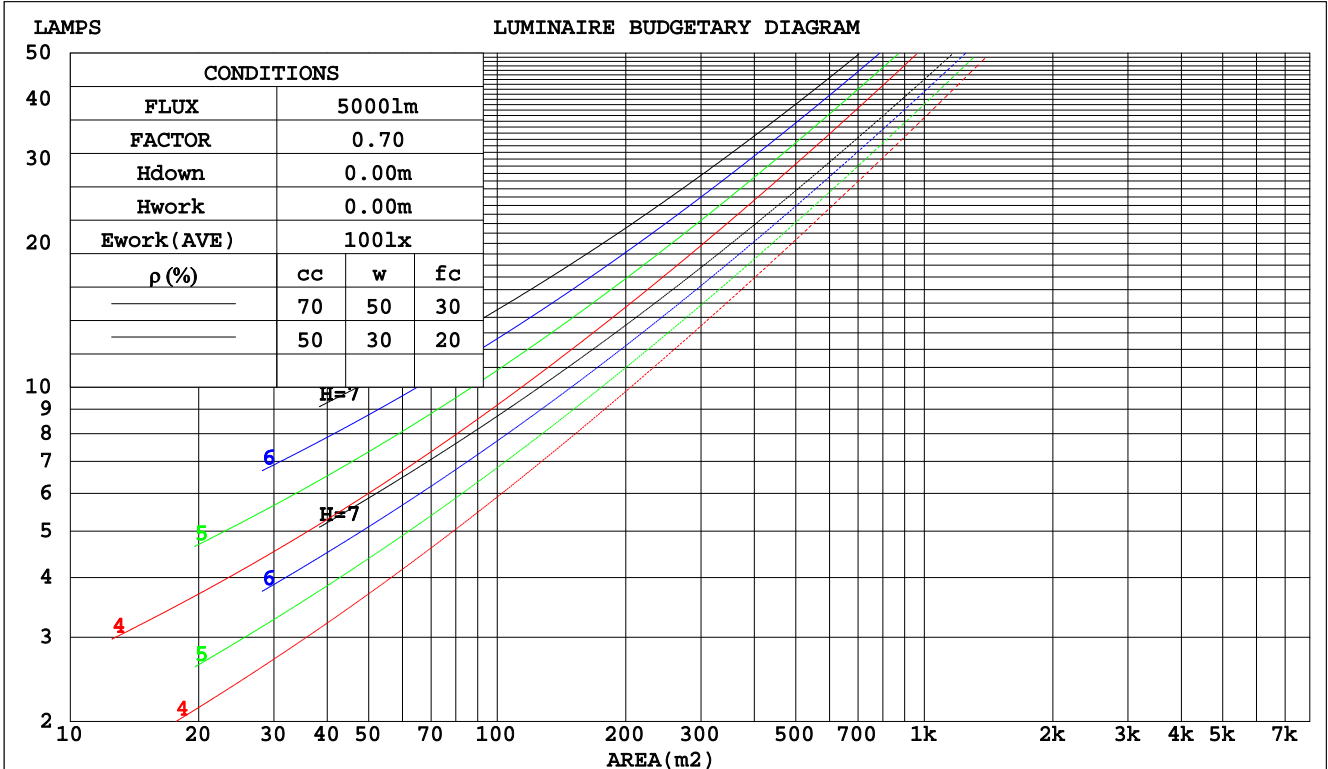
C Range: 0 - 360DEG
 C Interval: 15.0DEG
 Test Speed: HIGH
 Temperature: 24.9DEG
 Operators: Alan Wang
 Test Date: 14 December 2023

γ Range: 0 - 180DEG
 γ Interval: 1.0DEG
 Test System: EVERFINE GO-R5000_V2 SYSTEM V2.00.416
 Humidity: 42.0%
 Test Distance: 2.500m [K=1.0423]
 Remarks:

CU AND LUMINAIRE BUDGETARY ESTIMATE DIAGRAM

Test:U:120.0V I:0.2103A P:24.92W PF:0.9876 Freq:60.00Hz Lamp Flux:1548.07x1 lm		
NAME:	TYPE:LED	WEIGHT:
SPEC.:ASD-LWS27B-24D24BK_5000K	DIM.:	SERIAL No.:
MFR.: ASD Lighting Corp	SUR.:	Shielding Angle:

pcc	80%			70%			50%			30%			10%			0
	50%	30%	10%	50%	30%	10%	50%	30%	10%	50%	30%	10%	50%	30%	10%	0
pw																0
pfc	20%			20%			20%			20%			20%			0
RCR	RCR:Room Cavity Ratio						Coefficients of Utilization(CU)									
0.0	1.07	1.07	1.07	.99	.99	.99	.83	.83	.83	.69	.69	.69	.56	.56	.56	.50
1.0	.85	.79	.74	.78	.73	.68	.65	.60	.57	.52	.49	.46	.41	.38	.36	.30
2.0	.71	.63	.56	.65	.58	.51	.53	.48	.43	.43	.38	.34	.33	.29	.26	.21
3.0	.61	.52	.44	.56	.47	.40	.45	.39	.33	.36	.31	.27	.27	.23	.20	.16
4.0	.53	.43	.36	.48	.40	.33	.39	.32	.27	.31	.26	.21	.23	.19	.16	.12
5.0	.46	.37	.30	.42	.34	.27	.34	.28	.22	.27	.22	.18	.20	.16	.13	.09
6.0	.41	.32	.25	.37	.29	.23	.31	.24	.19	.24	.19	.15	.18	.14	.11	.08
7.0	.37	.28	.21	.33	.25	.19	.27	.21	.16	.22	.16	.12	.16	.12	.09	.06
8.0	.33	.24	.18	.30	.22	.17	.25	.18	.14	.20	.15	.11	.15	.11	.08	.05
9.0	.30	.22	.16	.27	.20	.15	.22	.16	.12	.18	.13	.09	.14	.10	.07	.04
10.0	.27	.19	.14	.25	.18	.13	.21	.15	.11	.16	.12	.08	.13	.09	.06	.04



C Range: 0 - 360DEG
 C Interval: 15.0DEG
 Test Speed: HIGH
 Temperature: 24.9DEG
 Operators: Alan Wang
 Test Date: 14 December 2023

γ Range: 0 - 180DEG
 γ Interval: 1.0DEG
 Test System: EVERFINE GO-R5000_V2 SYSTEM V2.00.416
 Humidity: 42.0%
 Test Distance: 2.500m [K=1.0423]
 Remarks:

WEC AND CCEC

Test:U:120.0V I:0.2103A P:24.92W PF:0.9876 Freq:60.00Hz Lamp Flux:1548.07x1 lm		
NAME:	TYPE:LED	WEIGHT:
SPEC.:ASD-LWS27B-24D24BK_5000K	DIM.:	SERIAL No.:
MFR.: ASD Lighting Corp	SUR.:	Shielding Angle:

ρcc	80%			70%			50%			30%			10%			0
ρw	50%	30%	10%	50%	30%	10%	50%	30%	10%	50%	30%	10%	50%	30%	10%	0
ρfc	20%			20%			20%			20%			20%			0
RCR	RCR:Room Cavity Ratio						Wall Exitance Coefficients(WEC)									
0.0																
1.0	.434	.247	.078	.412	.235	.075	.370	.212	.068	.331	.191	.061	.295	.171	.055	
2.0	.358	.196	.060	.337	.186	.057	.299	.166	.052	.263	.148	.046	.230	.130	.041	
3.0	.310	.165	.049	.291	.156	.047	.256	.138	.042	.223	.122	.037	.193	.107	.033	
4.0	.274	.142	.042	.257	.134	.040	.224	.119	.036	.194	.104	.031	.166	.090	.028	
5.0	.246	.125	.036	.230	.118	.034	.201	.104	.031	.173	.091	.027	.147	.079	.024	
6.0	.224	.112	.032	.209	.106	.030	.182	.093	.027	.156	.081	.024	.132	.069	.021	
7.0	.205	.101	.029	.191	.095	.027	.166	.084	.024	.142	.073	.021	.120	.062	.018	
8.0	.189	.092	.026	.177	.087	.025	.153	.076	.022	.131	.066	.019	.110	.056	.016	
9.0	.175	.085	.024	.164	.080	.022	.142	.070	.020	.121	.061	.017	.102	.052	.015	
10.0	.163	.078	.022	.153	.074	.021	.132	.065	.018	.113	.056	.016	.094	.047	.014	

ρcc	80%			70%			50%			30%			10%			0
ρw	50%	30%	10%	50%	30%	10%	50%	30%	10%	50%	30%	10%	50%	30%	10%	0
ρfc	20%			20%			20%			20%			20%			0
RCR	RCR:Room Cavity Ratio						Ceiling Cavity Exitance Coefficients(CCEC)									
0.0	.571	.571	.571	.488	.488	.488	.333	.333	.333	.191	.191	.191	.061	.061	.061	
1.0	.573	.539	.508	.490	.463	.438	.335	.318	.303	.193	.184	.176	.062	.059	.057	
2.0	.568	.518	.477	.486	.446	.412	.333	.309	.287	.192	.179	.168	.062	.058	.055	
3.0	.561	.503	.457	.481	.434	.396	.330	.302	.278	.191	.176	.164	.061	.057	.054	
4.0	.553	.492	.445	.475	.425	.387	.326	.296	.272	.189	.173	.161	.061	.056	.053	
5.0	.546	.483	.437	.469	.418	.380	.323	.292	.268	.187	.171	.159	.060	.056	.052	
6.0	.538	.476	.431	.463	.412	.375	.319	.288	.265	.185	.170	.158	.060	.055	.052	
7.0	.531	.470	.426	.457	.407	.371	.316	.285	.263	.184	.168	.157	.059	.055	.052	
8.0	.525	.464	.423	.452	.403	.369	.313	.283	.262	.182	.167	.156	.059	.055	.052	
9.0	.519	.460	.420	.447	.399	.367	.310	.281	.260	.180	.166	.155	.058	.054	.051	
10.0	.513	.456	.418	.442	.396	.365	.307	.279	.259	.179	.165	.155	.058	.054	.051	

C Range: 0 - 360DEG
 C Interval: 15.0DEG
 Test Speed: HIGH
 Temperature: 24.9DEG
 Operators: Alan Wang
 Test Date: 14 December 2023

γ Range: 0 - 180DEG
 γ Interval: 1.0DEG
 Test System: EVERFINE GO-R5000_V2 SYSTEM V2.00.416
 Humidity: 42.0%
 Test Distance: 2.500m [K=1.0423]
 Remarks:

UGR(Unified Glare Rating) Table

Test:U:120.0V I:0.2103A P:24.92W PF:0.9876 Freq:60.00Hz Lamp Flux:1548.07x1 lm										
NAME:					TYPE:LED			WEIGHT:		
SPEC.:ASD-LWS27B-24D24BK_5000K					DIM.:			SERIAL No.:		
MFR.: ASD Lighting Corp					SUR.:			Shielding Angle:		
ceiling/cavity	0.7	0.7	0.5	0.5	0.3	0.7	0.7	0.5	0.5	0.3
walls	0.5	0.3	0.5	0.3	0.3	0.5	0.3	0.5	0.3	0.3
working plane	0.2	0.2	0.2	0.2	0.2	0.2	0.2	0.2	0.2	0.2
Room dimensions	Viewed crosswise					Viewed endwise				
x = 2H y = 2H	18.7	19.9	19.6	20.8	21.9	6.8	7.9	7.6	8.8	10.0
3H	23.2	24.2	24.1	25.2	26.3	8.1	9.1	9.0	10.0	11.2
4H	25.6	26.5	26.5	27.5	28.7	8.7	9.7	9.6	10.6	11.8
6H	28.0	28.9	28.9	29.9	31.1	9.3	10.2	10.2	11.1	12.3
8H	29.3	30.2	30.2	31.1	32.4	9.5	10.4	10.4	11.3	12.6
12H	30.8	31.6	31.7	32.6	33.8	9.7	10.6	10.7	11.5	12.8
4H 2H	18.7	19.6	19.6	20.6	21.8	11.6	12.6	12.5	13.5	14.7
3H	23.4	24.3	24.4	25.2	26.5	13.0	13.9	14.0	14.8	16.1
4H	26.1	26.9	27.0	27.8	29.1	13.7	14.5	14.7	15.5	16.8
6H	29.0	29.7	29.9	30.7	32.0	14.4	15.0	15.3	16.0	17.3
8H	30.5	31.2	31.5	32.2	33.5	14.6	15.2	15.6	16.2	17.5
12H	32.2	32.8	33.2	33.8	35.1	14.8	15.4	15.8	16.4	17.7
8H 4H	26.0	26.7	27.0	27.7	29.0	17.5	18.2	18.5	19.2	20.5
6H	29.2	29.8	30.2	30.8	32.1	18.5	19.0	19.5	20.0	21.4
8H	31.0	31.5	32.0	32.5	33.9	18.9	19.4	19.9	20.4	21.8
12H	33.1	33.5	34.1	34.6	35.9	19.2	19.7	20.3	20.7	22.1
12H 4H	26.0	26.6	26.9	27.6	28.9	19.1	19.7	20.1	20.7	22.1
6H	29.2	29.7	30.2	30.7	32.0	20.3	20.8	21.3	21.8	23.1
8H	31.1	31.5	32.1	32.5	33.9	20.9	21.3	21.9	22.3	23.7
Variations with the observer position at spacings:										
S = 1.0H	+ 0.1 / - 0.1					+ 0.1 / - 0.1				
1.5H	+ 0.3 / - 0.3					+ 0.2 / - 0.1				
2.0H	+ 0.4 / - 0.5					+ 0.5 / - 0.4				

CIE Pub.117, 1548 lm Total Lamp Luminous Flux Corrected (8log(F/F0) = 1.5)
 Area: 0.0488 m2

C Range: 0 - 360DEG
 C Interval: 15.0DEG
 Test Speed: HIGH
 Temperature: 24.9DEG
 Operators: Alan Wang
 Test Date: 14 December 2023

γ Range: 0 - 180DEG
 γ Interval: 1.0DEG
 Test System: EVERFINE GO-R5000_V2 SYSTEM V2.00.416
 Humidity: 42.0%
 Test Distance: 2.500m [K=1.0423]
 Remarks:

UTILIZATION FACTORS TABLE

Test:U:120.0V I:0.2103A P:24.92W PF:0.9876 Freq:60.00Hz Lamp Flux:1548.07x1 lm		
NAME:	TYPE:LED	WEIGHT:
SPEC.:ASD-LWS27B-24D24BK_5000K	DIM.:	SERIAL No.:
MFR.: ASD Lighting Corp	SUR.:	Shielding Angle:

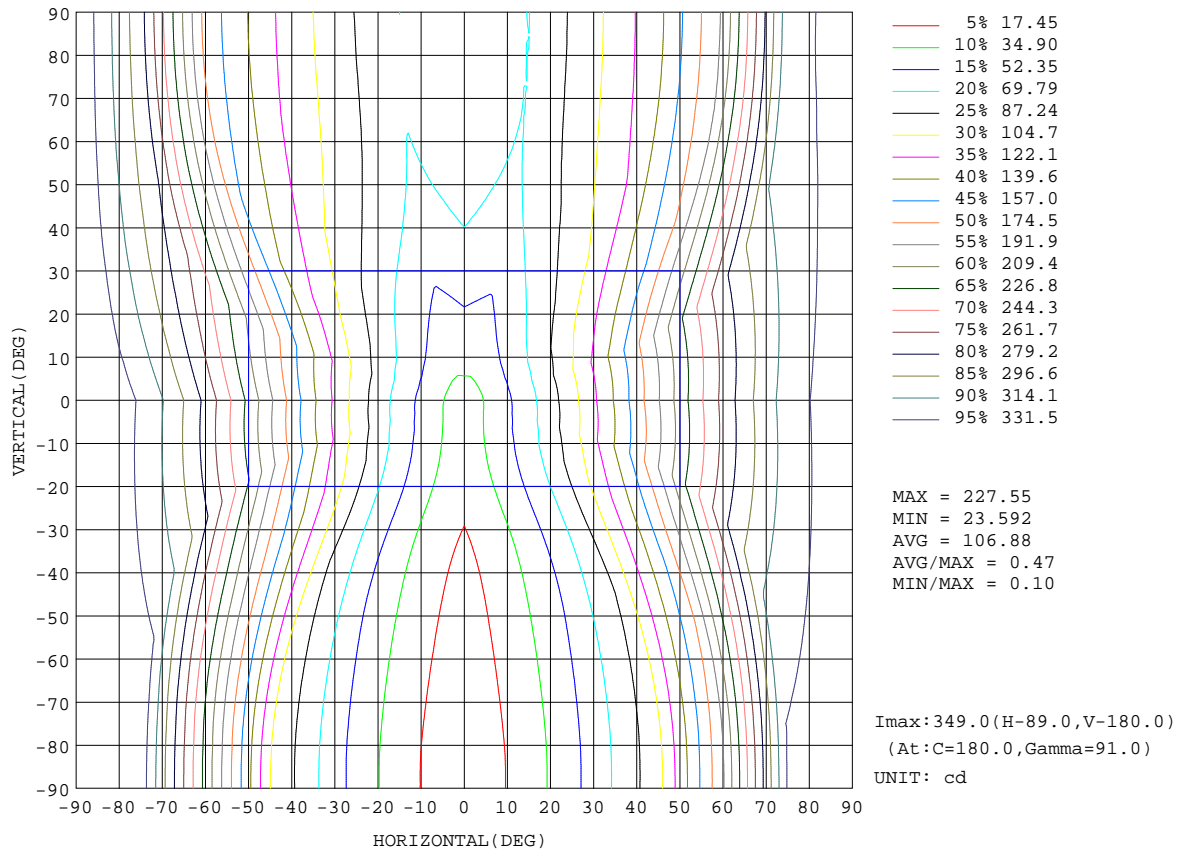
REFLECTANCE										
Ceiling	0.8	0.8	0.8	0.7	0.7	0.7	0.5	0.5	0.5	0
Walls	0.7	0.5	0.3	0.7	0.5	0.3	0.7	0.5	0.3	0
Working plane	0.2	0.2	0.2	0.2	0.2	0.2	0.2	0.2	0.2	0
ROOM INDEX	UTILIZATION FACTORS(PERCENT) $k(RI) \times RCR = 5$									
k = 0.60	34	21	14	32	20	13	29	18	12	5
0.80	42	28	20	40	27	19	35	24	17	7
1.00	50	35	25	46	33	24	40	31	21	10
1.25	56	42	32	52	39	30	45	34	26	13
1.50	62	47	37	57	44	35	49	38	31	15
2.00	70	56	46	64	52	43	54	45	37	19
2.50	75	62	52	69	58	49	58	49	42	22
3.00	79	67	58	73	62	54	61	53	47	25
4.00	85	74	66	78	69	61	65	58	53	28
5.00	88	79	72	81	73	67	68	62	57	31
ROOM INDEX	UF(total)									Direct
According to DIN EN 13032-2 2004			Suspended				SHRNOM = 1.25			

C Range: 0 - 360DEG
 C Interval: 15.0DEG
 Test Speed: HIGH
 Temperature: 24.9DEG
 Operators: Alan Wang
 Test Date: 14 December 2023

γ Range: 0 - 180DEG
 γ Interval: 1.0DEG
 Test System: EVERFINE GO-R5000_V2 SYSTEM V2.00.416
 Humidity: 42.0%
 Test Distance: 2.500m [K=1.0423]
 Remarks:

ISOCANDELA DIAGRAM

Test:U:120.0V I:0.2103A P:24.92W PF:0.9876 Freq:60.00Hz Lamp Flux:1548.07x1 lm		
NAME:	TYPE:LED	WEIGHT:
SPEC.:ASD-LWS27B-24D24BK_5000K	DIM.:	SERIAL No.:
MFR.: ASD Lighting Corp	SUR.:	Shielding Angle:

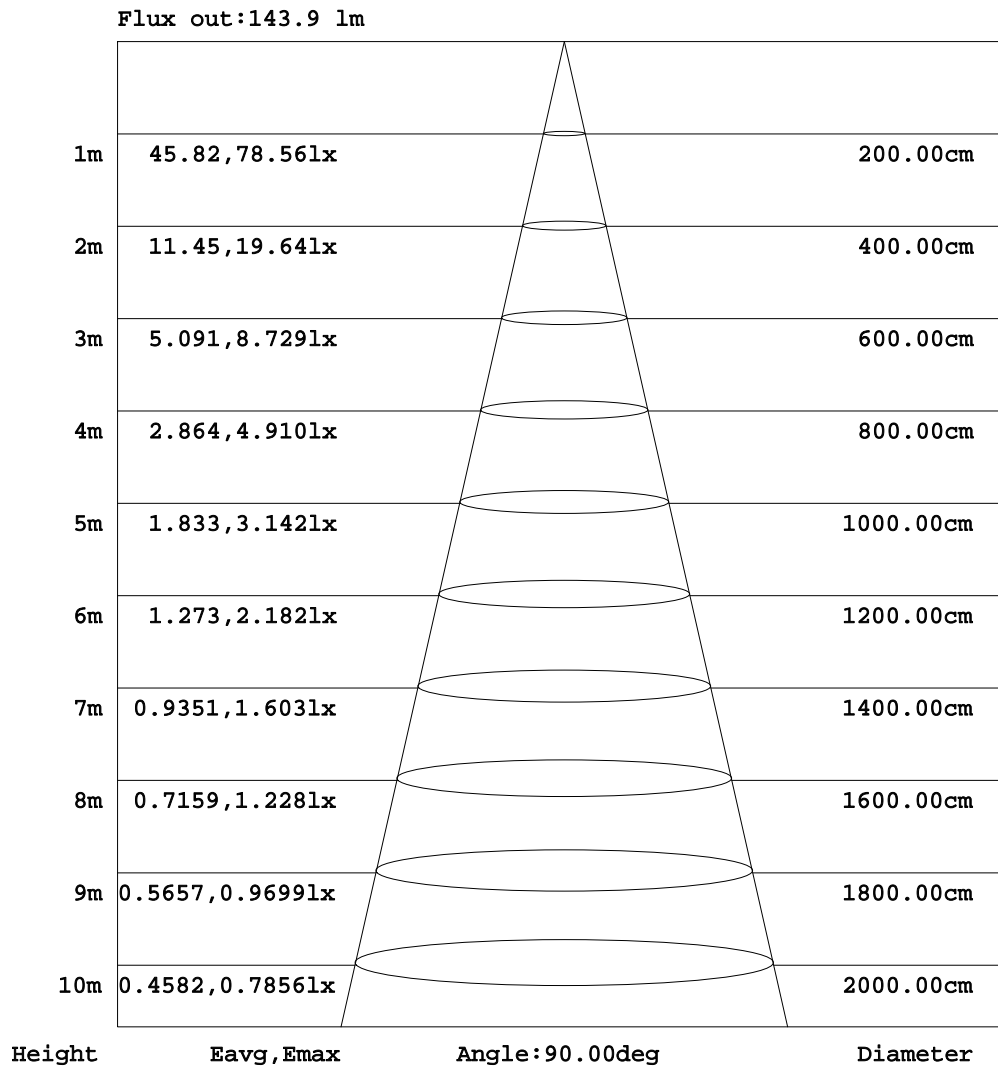


C Range: 0 - 360DEG
 C Interval: 15.0DEG
 Test Speed: HIGH
 Temperature: 24.9DEG
 Operators: Alan Wang
 Test Date: 14 December 2023

γ Range: 0 - 180DEG
 γ Interval: 1.0DEG
 Test System: EVERFINE GO-R5000_V2 SYSTEM V2.00.416
 Humidity: 42.0%
 Test Distance: 2.500m [K=1.0423]
 Remarks:

AAI Figure

Test:U:120.0V I:0.2103A P:24.92W PF:0.9876 Freq:60.00Hz Lamp Flux:1548.07x1 lm		
NAME:	TYPE:LED	WEIGHT:
SPEC.:ASD-LWS27B-24D24BK_5000K	DIM.:	SERIAL No.:
MFR.: ASD Lighting Corp	SUR.:	Shielding Angle:



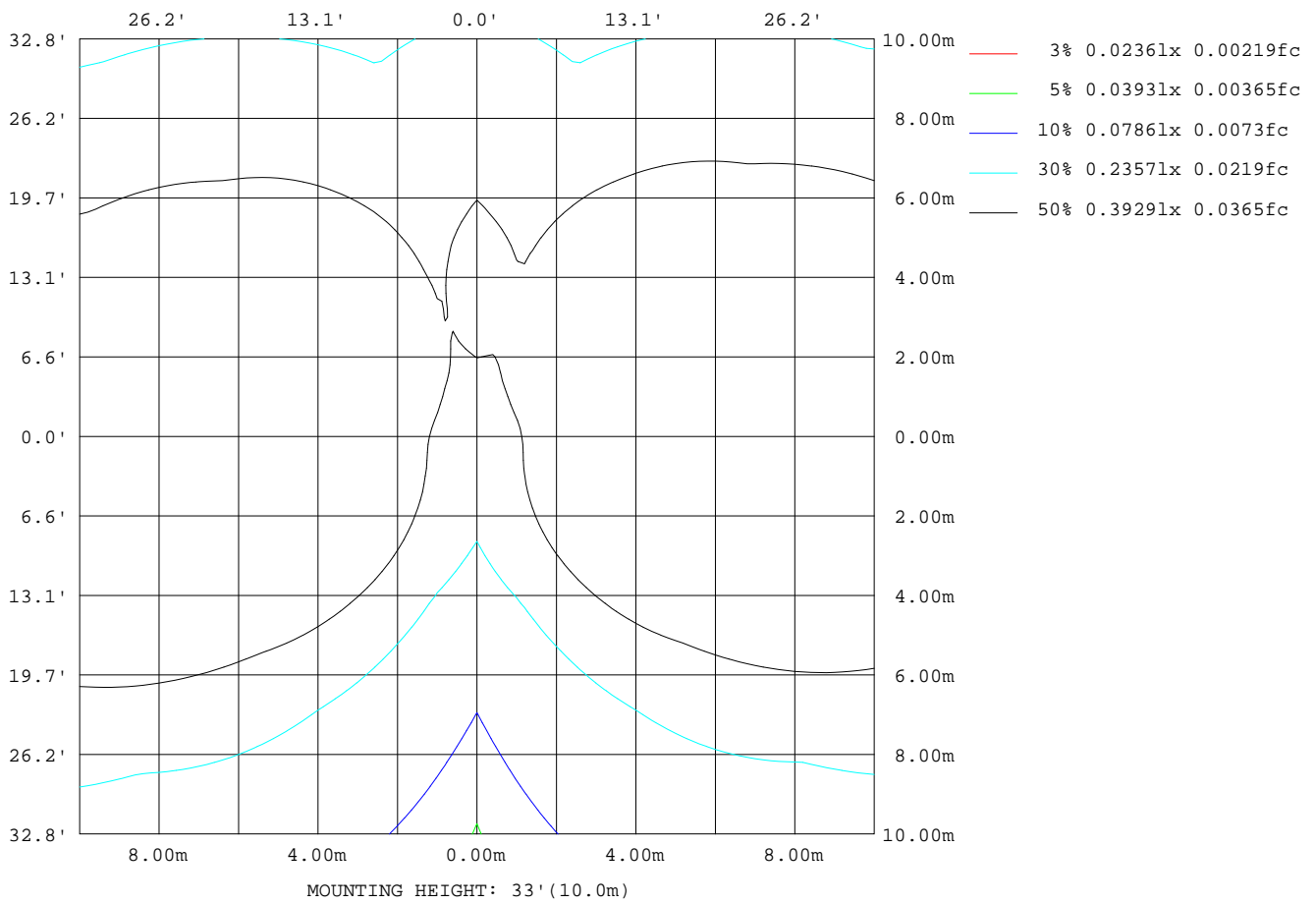
Note:The Curves indicate the illuminated area and the average illumination when the luminaire is at different distance.

C Range: 0 - 360DEG
 C Interval: 15.0DEG
 Test Speed: HIGH
 Temperature: 24.9DEG
 Operators:Alan Wang
 Test Date:14 December 2023

γ Range: 0 - 180DEG
 γ Interval: 1.0DEG
 Test System:EVERFINE GO-R5000_V2 SYSTEM V2.00.416
 Humidity: 42.0%
 Test Distance:2.500m [K=1.0423]
 Remarks:

ISOLUX DIAGRAM

Test:U:120.0V I:0.2103A P:24.92W PF:0.9876 Freq:60.00Hz Lamp Flux:1548.07x1 lm		
NAME:	TYPE:LED	WEIGHT:
SPEC.:ASD-LWS27B-24D24BK_5000K	DIM.:	SERIAL No.:
MFR.: ASD Lighting Corp	SUR.:	Shielding Angle:



C Range: 0 - 360DEG
 C Interval: 15.0DEG
 Test Speed: HIGH
 Temperature: 24.9DEG
 Operators: Alan Wang
 Test Date: 14 December 2023

γ Range: 0 - 180DEG
 γ Interval: 1.0DEG
 Test System: EVERFINE GO-R5000_V2 SYSTEM V2.00.416
 Humidity: 42.0%
 Test Distance: 2.500m [K=1.0423]
 Remarks:

LED Avg.L Report

Test:U:120.0V I:0.2103A P:24.92W PF:0.9876 Freq:60.00Hz Lamp Flux:1548.07x1 lm		
NAME:	TYPE:LED	WEIGHT:
SPEC.:ASD-LWS27B-24D24BK_5000K	DIM.:	SERIAL No.:
MFR.: ASD Lighting Corp	SUR.:	Shielding Angle:

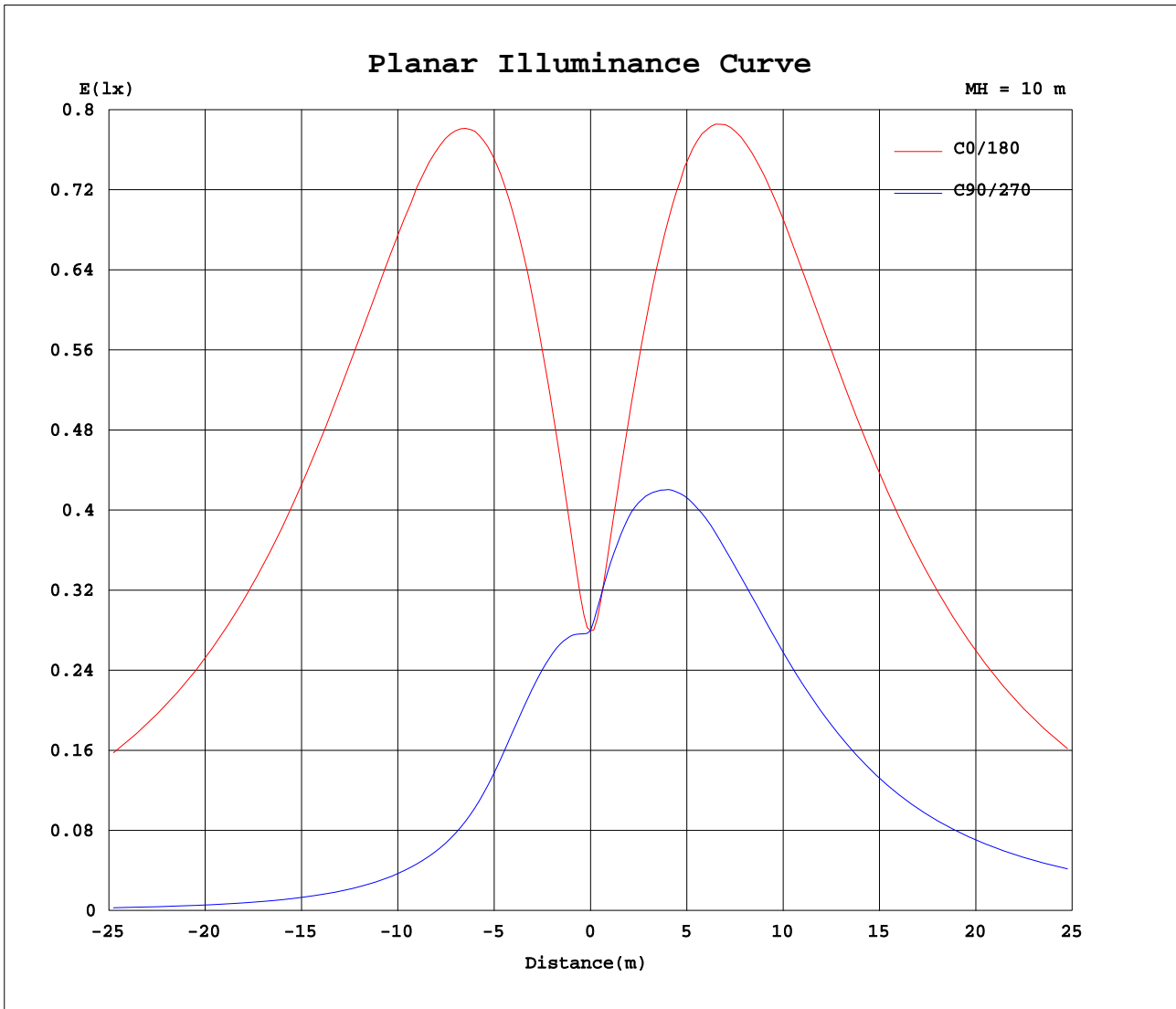
AvgL	cd/m2
L_0~180(65)av	14188
L_0~180(75)av	25743
L_0~180(85)av	80409
L_90~270(65)av	2062
L_90~270(75)av	3317
L_90~270(85)av	9693
L_45(65)av	5284
L_45(75)av	8961
L_45(85)av	27105

Standard: GB/T 29293-2012

C Range: 0 - 360DEG
 C Interval: 15.0DEG
 Test Speed: HIGH
 Temperature: 24.9DEG
 Operators: Alan Wang
 Test Date: 14 December 2023

γ Range: 0 - 180DEG
 γ Interval: 1.0DEG
 Test System: EVERFINE GO-R5000_V2 SYSTEM V2.00.416
 Humidity: 42.0%
 Test Distance: 2.500m [K=1.0423]
 Remarks:

Planar Illuminance Curve



C Range: 0 - 360DEG
 C Interval: 15.0DEG
 Test Speed: HIGH
 Temperature: 24.9DEG
 Operators: Alan Wang
 Test Date: 14 December 2023

γ Range: 0 - 180DEG
 γ Interval: 1.0DEG
 Test System: EVERFINE GO-R5000_V2 SYSTEM V2.00.416
 Humidity: 42.0%
 Test Distance: 2.500m [K=1.0423]
 Remarks:

LUMINOUS DISTRIBUTION INTENSITY DATA

Test:U:120.0V I:0.2103A P:24.92W PF:0.9876 Freq:60.00Hz Lamp Flux:1548.07x1 lm		
NAME:	TYPE:LED	WEIGHT:
SPEC.:ASD-LWS27B-24D24BK_5000K	DIM.:	SERIAL No.:
MFR.: ASD Lighting Corp	SUR.:	Shielding Angle:

Table--1

UNIT: cd

C(DEG) γ (DEG)	0	15	30	45	60	75	90	105	120	135	150	165	180	195	210	225	240	255	270
0	28.0	27.9	27.9	28.0	28.0	28.0	28.0	28.0	27.9	27.8	27.8	27.8	28.0	27.9	27.9	28.0	28.0	28.0	28.0
5	36.3	35.7	34.6	32.8	30.7	28.6	27.9	28.1	29.6	31.7	33.6	34.8	35.6	36.1	36.1	35.4	34.3	33.9	34.1
10	49.7	48.4	45.7	41.2	35.8	30.3	27.4	29.3	34.5	40.0	44.5	47.3	48.5	49.7	48.9	46.4	42.7	39.1	40.2
15	64.2	62.3	57.4	49.4	40.3	31.3	26.0	30.3	39.2	48.5	56.3	61.3	63.1	64.2	61.7	56.4	49.7	43.2	45.6
20	80.6	77.7	69.5	57.1	43.7	31.2	23.6	30.3	42.9	56.6	69.1	77.2	79.4	79.9	74.2	65.0	55.5	46.6	50.6
25	98.8	94.7	82.2	63.8	45.8	30.1	20.3	29.3	45.5	64.2	82.9	95.2	98.0	97.0	86.1	72.9	61.1	50.4	56.0
30	119	114	95.1	69.4	47.1	28.5	16.9	27.8	46.9	70.8	97.2	115	119	115	97.4	80.3	66.7	54.4	61.1
35	142	135	108	74.0	48.1	27.4	14.1	26.6	48.0	76.4	112	138	143	135	108	87.4	72.1	58.1	65.6
40	166	157	120	78.0	49.3	26.9	12.0	26.0	49.2	81.3	127	162	168	155	119	94.1	77.1	61.4	69.7
45	191	182	132	81.6	50.8	26.7	10.5	25.7	50.7	85.6	142	188	195	176	128	100	81.4	64.1	73.0
50	217	207	143	84.9	52.4	26.7	9.14	25.6	52.2	89.5	156	214	222	197	137	106	85.1	66.3	75.5
55	243	232	154	88.0	53.8	26.7	7.99	25.4	53.6	93.0	170	241	249	217	145	111	88.1	67.9	77.3
60	267	258	163	90.7	55.2	26.6	6.95	25.3	54.9	96.0	182	265	274	235	151	115	90.6	69.1	78.2
65	289	280	171	92.9	56.4	26.4	6.00	25.1	55.9	98.6	193	288	296	251	157	118	92.4	69.9	79.1
70	307	298	177	94.7	57.3	26.2	5.12	24.8	56.7	101	202	306	315	265	161	121	93.6	70.2	79.4
75	321	313	182	96.2	57.9	25.9	4.33	24.5	57.3	102	209	321	329	275	164	123	94.4	70.3	79.5
80	331	324	186	97.2	58.3	25.6	3.65	24.2	57.7	103	214	332	339	282	166	124	94.7	70.1	79.3
85	338	331	188	98.0	58.6	25.5	3.31	24.0	58.1	104	219	339	346	285	168	125	94.8	70.1	79.1
90	340	334	190	98.5	58.9	25.5	3.26	24.1	58.3	105	221	342	349	286	168	125	94.6	69.8	78.8
95	338	331	190	98.5	58.7	25.6	3.31	24.1	58.3	105	220	339	346	282	166	124	94.0	69.4	78.6
100	332	324	189	98.3	58.6	25.8	3.73	24.4	58.2	105	218	332	338	276	164	122	92.8	68.8	77.7
105	321	314	187	97.9	58.5	26.3	4.47	24.8	58.2	104	214	321	328	267	161	121	91.8	68.2	77.0
110	307	299	184	97.1	58.1	26.8	5.38	25.2	57.8	103	209	307	314	256	157	118	90.6	67.9	76.9
115	290	282	179	95.9	57.5	27.2	6.38	25.7	57.2	102	201	289	296	242	152	115	88.9	67.4	76.5
120	270	261	172	94.3	56.7	27.5	7.48	26.0	56.4	99.9	190	267	275	227	146	112	86.9	66.4	75.5
125	248	238	164	92.1	55.5	27.8	8.68	26.3	55.3	97.1	178	243	251	208	140	107	84.3	65.2	73.3
130	223	214	153	89.7	54.3	27.9	10.0	26.6	54.1	93.9	163	217	225	190	132	103	81.2	63.4	71.1
135	197	189	142	86.9	53.0	28.1	11.5	26.9	52.8	90.1	148	191	197	171	124	97.6	77.6	61.3	69.0
140	172	165	129	83.6	51.9	28.5	13.3	27.4	51.6	85.7	133	166	171	152	116	92.2	73.4	58.6	66.1
145	147	141	115	79.9	51.2	29.5	15.7	28.4	50.7	80.9	117	141	147	135	108	86.7	69.0	54.4	59.7
150	124	119	101	75.3	50.9	31.3	19.2	30.3	50.2	75.4	102	119	124	118	99.9	81.8	64.9	50.6	54.5
155	104	99.5	87.3	69.2	50.2	33.8	23.8	32.8	49.6	69.0	87.4	99.3	103	102	91.7	77.9	62.0	47.3	48.5
160	85.2	81.6	74.0	62.0	48.4	35.6	28.1	34.9	47.7	61.6	73.9	81.5	85.5	86.2	82.1	73.5	60.1	45.7	41.6
165	69.1	66.1	61.3	53.8	44.8	36.0	31.1	35.4	44.4	53.5	61.3	66.2	69.8	70.4	70.1	66.1	54.6	41.1	33.8
170	53.6	51.9	49.3	45.1	40.0	34.8	32.5	34.4	39.6	44.8	49.3	52.2	53.2	53.2	51.0	41.1	31.1	17.4	10.5
175	15.6	25.1	33.8	36.2	34.8	33.2	32.6	32.9	34.6	35.0	31.1	22.2	14.2	17.2	11.2	6.95	3.60	1.44	0.29
180	0.00	0.00	0.00	0.00	11.8	0.00	0.00	26.4	0.95	0.00	0.00	0.00	0.09	0.09	0.09	0.10	0.10	0.11	0.12

C Range: 0 - 360DEG
 C Interval: 15.0DEG
 Test Speed: HIGH
 Temperature: 24.9DEG
 Operators: Alan Wang
 Test Date: 14 December 2023

γ Range: 0 - 180DEG
 γ Interval: 1.0DEG
 Test System: EVERFINE GO-R5000_V2 SYSTEM V2.00.416
 Humidity: 42.0%
 Test Distance: 2.500m [K=1.0423]
 Remarks:

LUMINOUS DISTRIBUTION INTENSITY DATA

Test:U:120.0V I:0.2103A P:24.92W PF:0.9876 Freq:60.00Hz Lamp Flux:1548.07x1 lm		
NAME:	TYPE:LED	WEIGHT:
SPEC.:ASD-LWS27B-24D24BK_5000K	DIM.:	SERIAL No.:
MFR.: ASD Lighting Corp	SUR.:	Shielding Angle:

Table--2

UNIT: cd

C(DEG) γ (DEG)	285	300	315	330	345														
0	28.0	27.9	27.8	27.8	27.8														
5	34.0	34.9	36.0	36.7	36.6														
10	40.0	44.0	47.8	50.2	50.6														
15	44.4	51.8	58.9	64.0	65.7														
20	48.1	58.2	68.7	78.0	82.2														
25	51.9	64.3	77.8	91.9	101														
30	55.6	70.2	86.3	106	120														
35	58.7	75.2	93.9	119	141														
40	61.5	79.8	101	132	164														
45	63.9	83.9	107	144	188														
50	65.9	87.3	113	155	212														
55	67.6	90.5	118	165	236														
60	68.7	93.1	122	173	259														
65	69.3	95.3	126	181	279														
70	69.5	96.9	129	186	296														
75	69.7	98.2	132	190	310														
80	69.6	98.9	133	193	318														
85	69.7	99.3	134	194	323														
90	69.5	99.3	135	194	325														
95	69.2	99.0	134	193	322														
100	68.7	98.1	133	191	314														
105	68.2	97.3	131	187	303														
110	68.0	96.2	129	182	288														
115	67.4	94.5	126	175	270														
120	66.3	92.2	122	168	250														
125	64.4	89.3	117	159	228														
130	62.1	85.1	111	149	204														
135	60.0	80.6	104	138	181														
140	57.6	74.7	98.1	126	158														
145	51.2	69.4	91.2	114	137														
150	49.1	65.8	83.2	101	116														
155	46.0	58.6	74.0	87.4	97.7														
160	40.6	50.7	64.4	75.1	81.6														
165	31.8	38.1	53.3	63.2	66.8														
170	9.79	12.7	27.3	34.1	44.9														
175	0.29	0.57	1.82	4.24	8.25														
180	0.11	0.07	0.08	0.12	0.10														

C Range: 0 - 360DEG
 C Interval: 15.0DEG
 Test Speed: HIGH
 Temperature: 24.9DEG
 Operators: Alan Wang
 Test Date: 14 December 2023

γ Range: 0 - 180DEG
 γ Interval: 1.0DEG
 Test System: EVERFINE GO-R5000_V2 SYSTEM V2.00.416
 Humidity: 42.0%
 Test Distance: 2.500m [K=1.0423]
 Remarks: