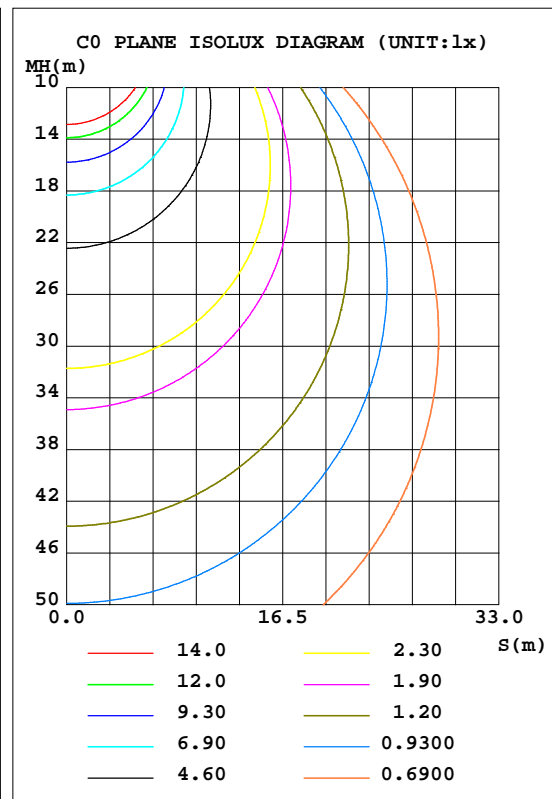
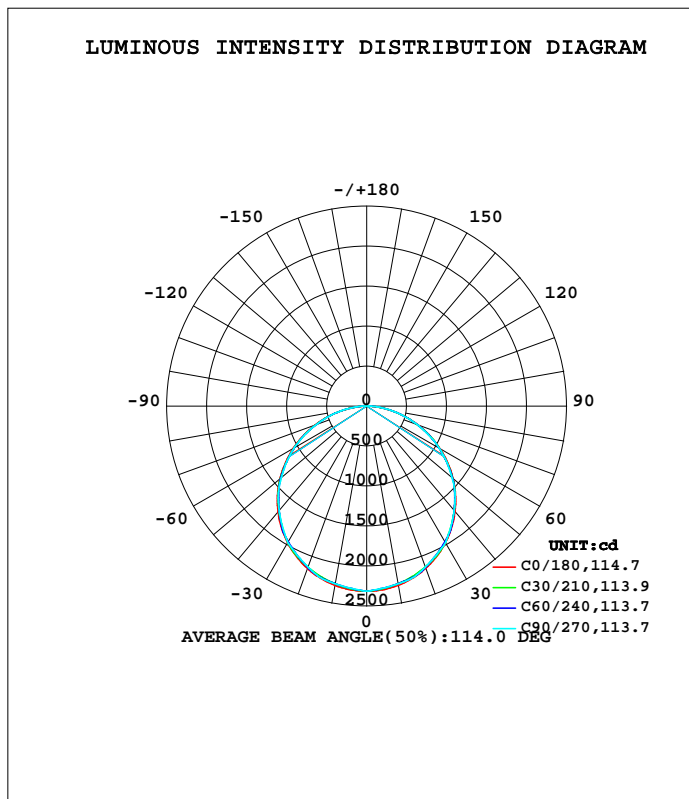


LUMINAIRE PHOTOMETRIC TEST REPORT

Test:U:120.0V I:0.5026A P:59.69W PF:0.9896 Lamp Flux:3,607x1 lm		
NAME: ASD Lighting corp	TYPE:LED PANEL	WEIGHT:
SPEC.:ASD-ELP02-24D6050-STD	DIM.: 2x4	SERIAL No.:BLD20181210P27
MFR.: ASD Lighting corp	SUR.:0.56*1.17	Shielding Angle:

DATA OF LAMP		PHOTOMETRIC DATA Eff: 113.16 lm/W			
MODEL		I _{max} (cd)	2315	S/MH(C0/180)	1.27
NOMINAL POWER(W)	60	LOR(%)	100.0	S/MH(C90/270)	1.26
RATED VOLTAGE(V)		TOTAL FLUX(lm)	3,607	η UP, DN(C0-180)	0.0,50.0
NOMINAL FLUX(lm)	3,607	CIE CLASS	DIRECT	η UP, DN(C180-360)	0.0,50.0
LAMPS INSIDE	1	η up(%)	0.0	CIBSE SHR NOM	1.25
TEST VOLTAGE(V)		η down(%)	100.0	CIBSE SHR MAX	1.35



C Range: 0 - 360DEG
 C Interval: 5.0DEG
 Test Speed: HIGH
 Temperature:26DEG
 Operators:NEIKO
 Test Date:2018-12-10

γ Range: 0 - 180DEG
 γ Interval: 0.5DEG
 Test System:EVERFINE GO-2000B_V1 SYSTEM V2.0.350
 Humidity:56%
 Test Distance:12.218m [K=1.0000]
 Remarks:

ZONAL FLUX DIAGRAM

ZONAL FLUX DIAGRAM:

γ	C0	C45	C90	C135	C180	C225	C270	C315	γ	Φ zone	Φ total	%lum, lamp
5	2305	2290	2286	2290	2306	2290	2286	2290	0- 5	55.01	55.01	0.81,0.81
10	2275	2254	2257	2255	2277	2256	2257	2255	5- 10	162.7	217.7	3.22,3.22
15	2227	2210	2223	2211	2230	2212	2223	2210	10- 15	265.4	483.1	7.15,7.15
20	2160	2155	2143	2156	2163	2157	2143	2155	15- 20	359.7	842.9	12.5,12.5
25	2074	2062	2058	2064	2079	2064	2058	2062	20- 25	441.3	1284	19,19
30	1972	1954	1973	1956	1977	1957	1972	1954	25- 30	509.1	1793	26.6,26.6
35	1853	1840	1838	1843	1860	1844	1838	1840	30- 35	560.6	2354	34.9,34.9
40	1720	1716	1704	1720	1726	1720	1704	1716	35- 40	592.5	2946	43.6,43.6
45	1572	1557	1565	1560	1579	1561	1565	1557	40- 45	605.6	3552	52.6,52.6
50	1411	1397	1395	1399	1417	1399	1396	1396	45- 50	599.2	4151	61.5,61.5
55	1239	1233	1222	1234	1245	1234	1222	1232	50- 55	571.7	4723	69.9,69.9
60	1056	1044	1048	1047	1063	1046	1049	1044	55- 60	526.0	5249	77.7,77.7
65	867.9	856.8	856.2	860.8	873.8	859.3	857.4	857.1	60- 65	463.9	5713	84.6,84.6
70	675.7	668.7	665.2	673.3	681.7	671.2	666.7	669.4	65- 70	387.0	6100	90.3,90.3
75	485.9	480.3	477.6	484.2	490.9	481.0	479.1	480.8	70- 75	299.7	6400	94.7,94.7
80	295.6	301.5	301.0	304.5	289.8	299.8	299.2	300.5	75- 80	206.4	6606	97.8,97.8
85	106.0	141.0	140.8	140.8	99.43	131.9	130.9	131.5	80- 85	114.7	6721	99.5,99.5
90	1.594	17.18	23.88	15.83	4.303	8.648	15.87	7.740	85- 90	32.21	6753	100,100
95	0	0	0	0	0	0	0	0	90- 95	1.389	6754	100,100
100	0	0	0	0	0	0	0	0	95-100	0	6754	100,100
105	0	0	0	0	0	0	0	0	100-105	0	6754	100,100
110	0	0	0	0	0	0	0	0	105-110	0	6754	100,100
115	0	0	0	0	0	0	0	0	110-115	0	6754	100,100
120	0	0	0	0	0	0	0	0	115-120	0	6754	100,100
125	0	0	0	0	0	0	0	0	120-125	0	6754	100,100
130	0	0	0	0	0	0	0	0	125-130	0	6754	100,100
135	0	0	0	0	0	0	0	0	130-135	0	6754	100,100
140	0	0	0	0	0	0	0	0	135-140	0	6754	100,100
145	0	0	0	0	0	0	0	0	140-145	0	6754	100,100
150	0	0	0	0	0	0	0	0	145-150	0	6754	100,100
155	0	0	0	0	0	0	0	0	150-155	0	6754	100,100
160	0	0	0	0	0	0	0	0	155-160	0	6754	100,100
165	0	0	0	0	0	0	0	0	160-165	0	6754	100,100
170	0	0	0	0	0	0	0	0	165-170	0	6754	100,100
175	0	0	0	0	0	0	0	0	170-175	0	6754	100,100
180	0	0	0	0	0	0	0	0	175-180	0	6754	100,100
DEG	LUMINOUS INTENSITY:cd								UNIT:lm			

Conical surface Flux(90deg): 3552.1 lm

%lum = 52.6%
%lamp = 52.6%

Conical surface Flux(120deg): 5248.9 lm

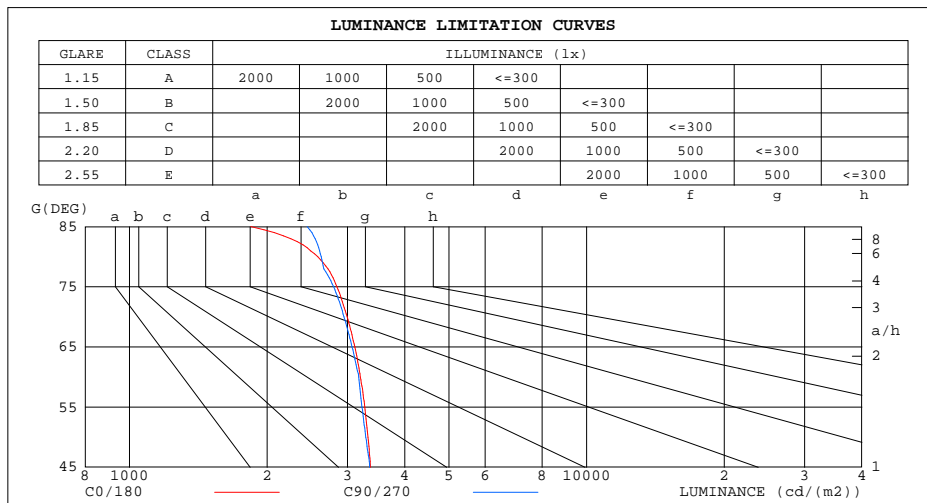
%lum = 77.7%
%lamp = 77.7%

C Range: 0 - 360DEG
C Interval: 5.0DEG
Test Speed: HIGH
Temperature:26DEG
Operators:NEIKO
Test Date:2018-12-10

γ Range: 0 - 180DEG
γ Interval: 0.5DEG
Test System:EVERFINE GO-2000B_V1 SYSTEM V2.0.350
Humidity:56%
Test Distance:12.218m [K=1.0000]
Remarks:

LUMINANCE LIMITATION CURVES

Test:U:120.0V I:0.5026A P:59.69W PF:0.9896 Lamp Flux:3607x1 lm		
NAME: ASD Lighting corp	TYPE:LED PANEL	WEIGHT:
SPEC.:ASD-ELP02-24D6050-STD	DIM.: 2x4	SERIAL No.:BLD20181210P27
MFR.: ASD Lighting corp	SUR.:0.56*1.17	Shielding Angle:



LUMINANCE cd/(m2)		
G(DEG)	C0/180	C90/270
85	1842	2448
80	2579	2627
75	2844	2796
70	2994	2947
65	3112	3070
60	3201	3176
55	3272	3227
50	3326	3289
45	3368	3354

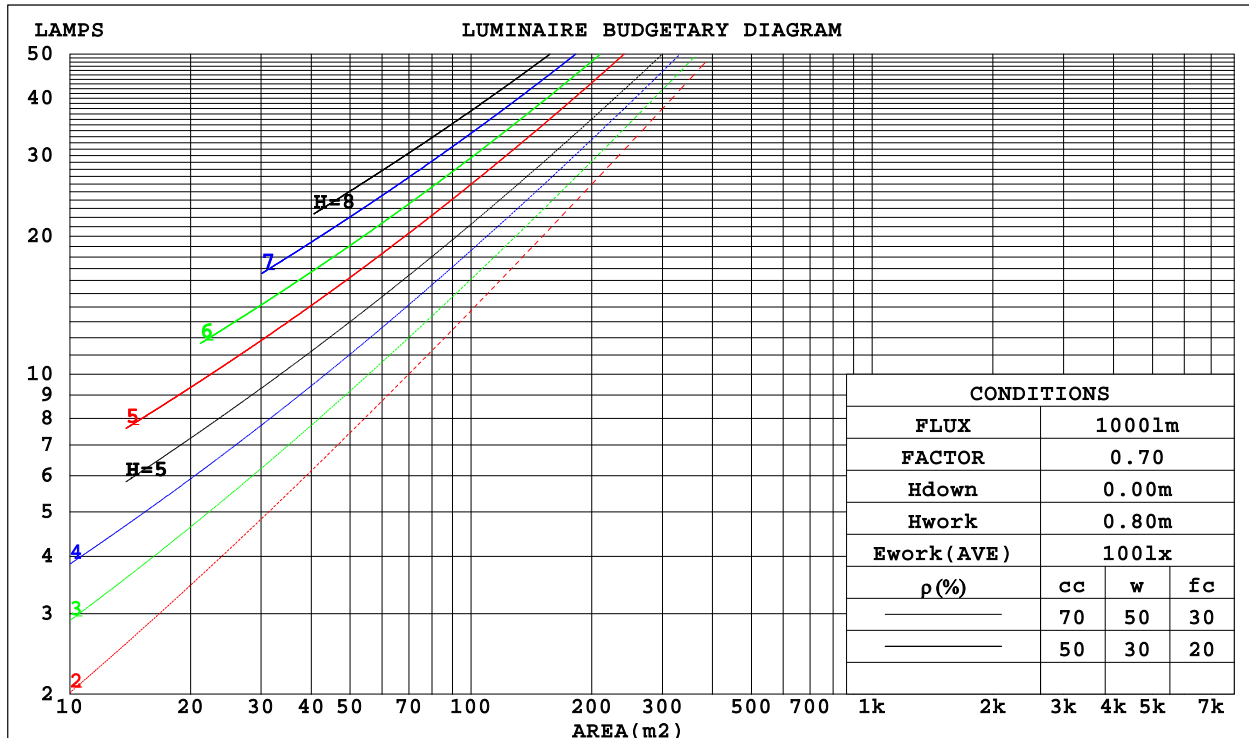
C Range: 0 - 360DEG
 C Interval: 5.0DEG
 Test Speed: HIGH
 Temperature:26DEG
 Operators:NEIKO
 Test Date:2018-12-10

γ Range: 0 - 180DEG
 γ Interval: 0.5DEG
 Test System:EVERFINE GO-2000B_V1 SYSTEM V2.0.350
 Humidity:56%
 Test Distance:12.218m [K=1.0000]
 Remarks:

CU AND LUMINAIRE BUDGETARY ESTIMATE DIAGRAM

Test:U:120.0V I:0.5026A P:59.69W PF:0.9896 Lamp Flux:3607x1 lm		
NAME: ASD Lighting corp	TYPE:LED PANEL	WEIGHT:
SPEC.:ASD-ELP02-24D6050-STD	DIM.: 2x4	SERIAL No.:BLD20181210P27
MFR.: ASD Lighting corp	SUR.:0.56*1.17	Shielding Angle:

ρ_{cc}	80%			70%			50%			30%			10%			0
ρ_w	50%	30%	10%	50%	30%	10%	50%	30%	10%	50%	30%	10%	50%	30%	10%	0
ρ_{fc}	20%			20%			20%			20%			20%			0
RCR	RCR:Room Cavity Ratio						Coefficients of Utilization(CU)									
0.0	1.19	1.19	1.19	1.16	1.16	1.16	1.11	1.11	1.11	1.06	1.06	1.06	1.02	1.02	1.02	.00
1.0	1.04	.99	.95	1.01	.97	.94	.97	.94	.91	.93	.90	.88	.89	.87	.85	.83
2.0	.90	.83	.77	.88	.82	.76	.84	.79	.74	.81	.77	.73	.78	.74	.71	.69
3.0	.79	.70	.64	.77	.69	.63	.74	.68	.62	.71	.66	.61	.69	.64	.60	.58
4.0	.70	.61	.54	.68	.60	.54	.66	.59	.53	.63	.57	.52	.61	.56	.51	.49
5.0	.62	.53	.46	.61	.52	.46	.59	.51	.46	.57	.50	.45	.55	.49	.44	.42
6.0	.56	.47	.40	.55	.46	.40	.53	.45	.40	.51	.45	.39	.50	.44	.39	.37
7.0	.51	.42	.36	.50	.41	.35	.48	.41	.35	.47	.40	.35	.45	.39	.35	.33
8.0	.46	.38	.32	.45	.37	.32	.44	.37	.31	.43	.36	.31	.42	.36	.31	.29
9.0	.42	.34	.28	.42	.34	.28	.41	.33	.28	.40	.33	.28	.38	.32	.28	.26
10.0	.39	.31	.26	.39	.31	.26	.38	.30	.26	.37	.30	.25	.36	.30	.25	.24



C Range: 0 - 360DEG
 C Interval: 5.0DEG
 Test Speed: HIGH
 Temperature:26DEG
 Operators:NEIKO
 Test Date:2018-12-10

γ Range: 0 - 180DEG
 γ Interval: 0.5DEG
 Test System:EVERFINE GO-2000B_V1 SYSTEM V2.0.350
 Humidity:56%
 Test Distance:12.218m [K=1.0000]
 Remarks:

WEC AND CCEC

Test:U:120.0V I:0.5026A P:59.69W PF:0.9896 Lamp Flux:3607x1 lm		
NAME: ASD Lighting corp	TYPE:LED PANEL	WEIGHT:
SPEC.:ASD-ELP02-24D6050-STD	DIM.: 2x4	SERIAL No.:BLD20181210P27
MFR.: ASD Lighting corp	SUR.:0.56*1.17	Shielding Angle:

pcc	80%			70%			50%			30%			10%			0
pw	50%	30%	10%	50%	30%	10%	50%	30%	10%	50%	30%	10%	50%	30%	10%	0
pfc	20%			20%			20%			20%			20%			0
RCR	RCR:Room Cavity Ratio						Wall Exitance Coefficients(WEC)									
0.0																
1.0	.316	.180	.057	.309	.176	.056	.296	.170	.054	.284	.164	.053	.272	.158	.051	
2.0	.296	.162	.050	.290	.160	.049	.278	.155	.048	.268	.150	.047	.258	.146	.046	
3.0	.274	.146	.044	.268	.144	.043	.258	.140	.042	.248	.136	.042	.239	.132	.041	
4.0	.252	.131	.038	.247	.129	.038	.238	.126	.038	.229	.123	.037	.221	.120	.037	
5.0	.233	.118	.034	.228	.117	.034	.220	.115	.034	.212	.112	.033	.205	.110	.033	
6.0	.215	.108	.031	.212	.107	.031	.204	.105	.030	.197	.103	.030	.191	.101	.030	
7.0	.200	.099	.028	.197	.098	.028	.190	.096	.028	.184	.094	.027	.179	.093	.027	
8.0	.187	.091	.026	.184	.091	.026	.178	.089	.025	.173	.087	.025	.167	.086	.025	
9.0	.175	.085	.024	.172	.084	.024	.167	.083	.023	.162	.081	.023	.158	.080	.023	
10.0	.165	.079	.022	.162	.078	.022	.157	.077	.022	.153	.076	.022	.149	.075	.021	

pcc	80%			70%			50%			30%			10%			0
pw	50%	30%	10%	50%	30%	10%	50%	30%	10%	50%	30%	10%	50%	30%	10%	0
pfc	20%			20%			20%			20%			20%			0
RCR	RCR:Room Cavity Ratio						Ceiling Cavity Exitance Coefficients(CCEC)									
0.0	.191	.191	.191	.163	.163	.163	.111	.111	.111	.064	.064	.064	.020	.020	.020	
1.0	.181	.156	.134	.155	.134	.115	.106	.092	.080	.061	.053	.046	.020	.017	.015	
2.0	.173	.132	.098	.148	.114	.084	.102	.079	.059	.059	.046	.034	.019	.015	.011	
3.0	.165	.114	.074	.142	.099	.064	.097	.069	.045	.056	.040	.027	.018	.013	.009	
4.0	.158	.101	.058	.135	.087	.050	.093	.061	.036	.054	.036	.021	.017	.012	.007	
5.0	.150	.091	.047	.129	.079	.041	.089	.055	.029	.051	.032	.017	.017	.011	.006	
6.0	.143	.082	.039	.123	.071	.034	.085	.050	.024	.049	.029	.014	.016	.010	.005	
7.0	.136	.076	.033	.117	.066	.029	.081	.046	.020	.047	.027	.012	.015	.009	.004	
8.0	.130	.070	.029	.112	.061	.025	.077	.043	.018	.045	.025	.011	.015	.008	.004	
9.0	.123	.065	.025	.106	.056	.022	.074	.040	.016	.043	.023	.009	.014	.008	.003	
10.0	.118	.061	.022	.102	.053	.020	.070	.037	.014	.041	.022	.008	.013	.007	.003	

C Range: 0 - 360DEG
 C Interval: 5.0DEG
 Test Speed: HIGH
 Temperature:26DEG
 Operators:NEIKO
 Test Date:2018-12-10

γ Range: 0 - 180DEG
 γ Interval: 0.5DEG
 Test System:EVERFINE GO-2000B_V1 SYSTEM V2.0.350
 Humidity:56%
 Test Distance:12.218m [K=1.0000]
 Remarks:

UGR(Unified Glare Rating) Table

Test:U:120.0V I:0.5026A P:59.69W PF:0.9896 Lamp Flux:3607x1 lm										
NAME: ASD Lighting corp					TYPE:LED PANEL			WEIGHT:		
SPEC.:ASD-ELP02-24D6050-STD					DIM.: 2x4			SERIAL No.:BLD20181210P27		
MFR.: ASD Lighting corp					SUR.:0.56*1.17			Shielding Angle:		
ceiling/cavity	0.7	0.7	0.5	0.5	0.3	0.7	0.7	0.5	0.5	0.3
walls	0.5	0.3	0.5	0.3	0.3	0.5	0.3	0.5	0.3	0.3
working plane	0.2	0.2	0.2	0.2	0.2	0.2	0.2	0.2	0.2	0.2
Room dimensions	Viewed crosswise					Viewed endwise				
x = 2H y = 2H	17.0	18.5	17.3	18.7	18.9	17.0	18.5	17.2	18.7	18.9
3H	18.6	20.0	18.9	20.2	20.5	18.5	20.0	18.8	20.2	20.4
4H	19.2	20.6	19.5	20.8	21.1	19.2	20.5	19.5	20.8	21.1
6H	19.6	20.9	20.0	21.2	21.5	19.7	21.0	20.0	21.2	21.5
8H	19.8	21.0	20.1	21.3	21.6	19.9	21.1	20.2	21.4	21.7
12H	19.8	21.0	20.2	21.3	21.6	20.0	21.2	20.3	21.5	21.8
4H 2H	17.6	19.0	17.9	19.2	19.5	17.6	18.9	17.9	19.2	19.5
3H	19.4	20.6	19.7	20.9	21.2	19.4	20.5	19.7	20.8	21.2
4H	20.2	21.2	20.5	21.6	21.9	20.1	21.2	20.5	21.6	21.9
6H	20.7	21.7	21.1	22.0	22.4	20.8	21.7	21.2	22.1	22.5
8H	20.9	21.8	21.3	22.1	22.5	21.0	21.9	21.4	22.3	22.7
12H	20.9	21.8	21.4	22.2	22.6	21.2	22.0	21.6	22.4	22.8
8H 4H	20.4	21.3	20.9	21.7	22.1	20.4	21.3	20.9	21.7	22.1
6H	21.2	21.9	21.6	22.3	22.7	21.2	22.0	21.7	22.4	22.8
8H	21.4	22.1	21.9	22.5	23.0	21.6	22.2	22.0	22.7	23.1
12H	21.6	22.2	22.1	22.6	23.1	21.8	22.4	22.3	22.9	23.3
12H 4H	20.5	21.3	20.9	21.7	22.1	20.5	21.3	20.9	21.7	22.1
6H	21.2	21.9	21.7	22.3	22.8	21.3	22.0	21.8	22.4	22.8
8H	21.5	22.1	22.0	22.6	23.0	21.7	22.3	22.2	22.7	23.2
Variations with the observer position at spacings:										
S = 1.0H	+ 0.1 / - 0.2					+ 0.1 / - 0.2				
1.5H	+ 0.1 / - 0.3					+ 0.2 / - 0.3				
2.0H	+ 0.2 / - 0.2					+ 0.1 / - 0.3				

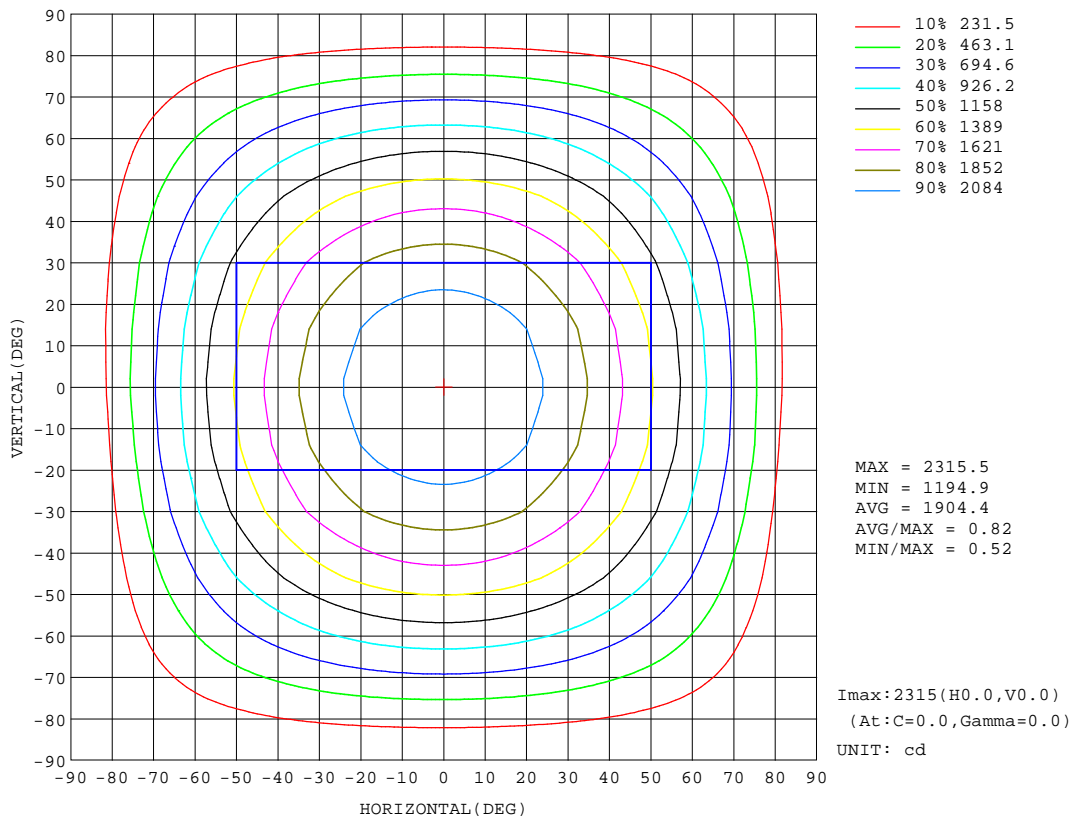
CIE Pub.117 Corrected 6754 lm Total Lamp Luminous Flux.(8log(F/F0) = 6.6)

C Range: 0 - 360DEG
C Interval: 5.0DEG
Test Speed: HIGH
Temperature:26DEG
Operators:NEIKO
Test Date:2018-12-10

γ Range: 0 - 180DEG
 γ Interval: 0.5DEG
Test System:EVERFINE GO-2000B_V1 SYSTEM V2.0.350
Humidity:56%
Test Distance:12.218m [K=1.0000]
Remarks:

ISOCANDELA DIAGRAM

Test:U:120.0V I:0.5026A P:59.69W PF:0.9896 Lamp Flux:3607x1 lm		
NAME: ASD Lighting corp	TYPE:LED PANEL	WEIGHT:
SPEC.:ASD-ELP02-24D6050-STD	DIM.: 2x4	SERIAL No.:BLD20181210P27
MFR.: ASD Lighting corp	SUR.:0.56*1.17	Shielding Angle:



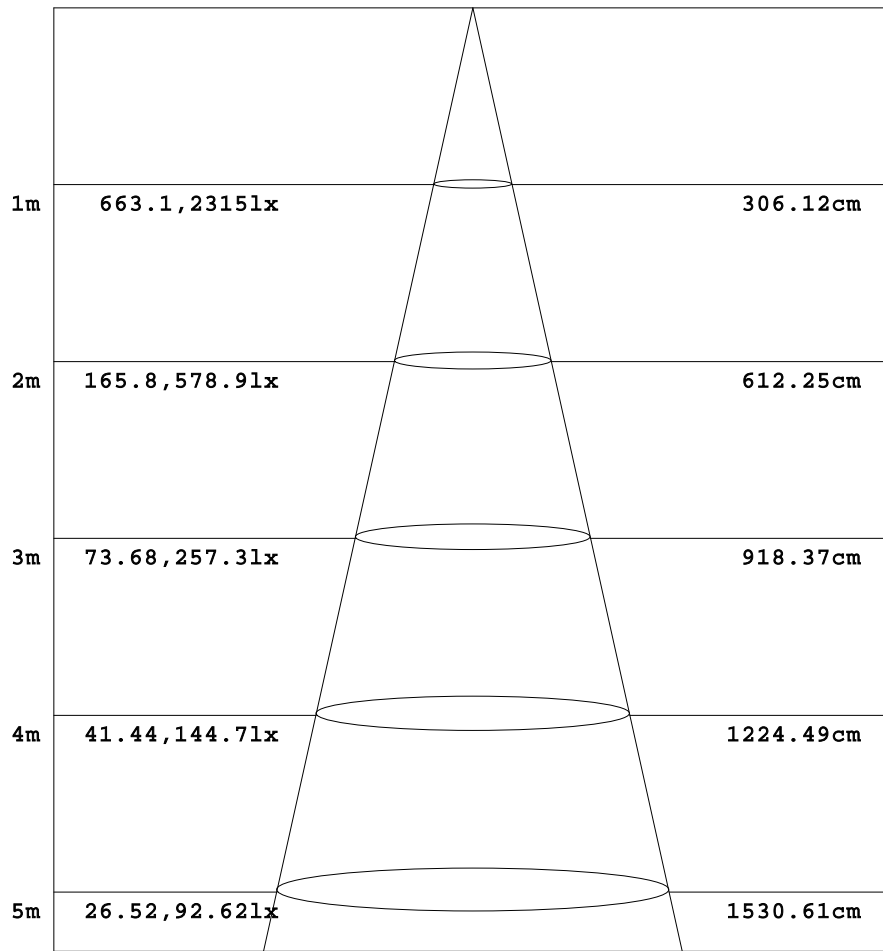
C Range: 0 - 360DEG
 C Interval: 5.0DEG
 Test Speed: HIGH
 Temperature:26DEG
 Operators:NEIKO
 Test Date:2018-12-10

γ Range: 0 - 180DEG
 γ Interval: 0.5DEG
 Test System:EVERFINE GO-2000B_V1 SYSTEM V2.0.350
 Humidity:56%
 Test Distance:12.218m [K=1.0000]
 Remarks:

AAI Figure

Test:U:120.0V I:0.5026A P:59.69W PF:0.9896 Lamp Flux:3607x1 lm		
NAME: ASD Lighting corp	TYPE:LED PANEL	WEIGHT:
SPEC.:ASD-ELP02-24D6050-STD	DIM.: 2x4	SERIAL No.:BLD20181210P27
MFR.: ASD Lighting corp	SUR.:0.56*1.17	Shielding Angle:

Flux out:4940 lm



Height Eavg, Emax Angle:113.68deg Diameter

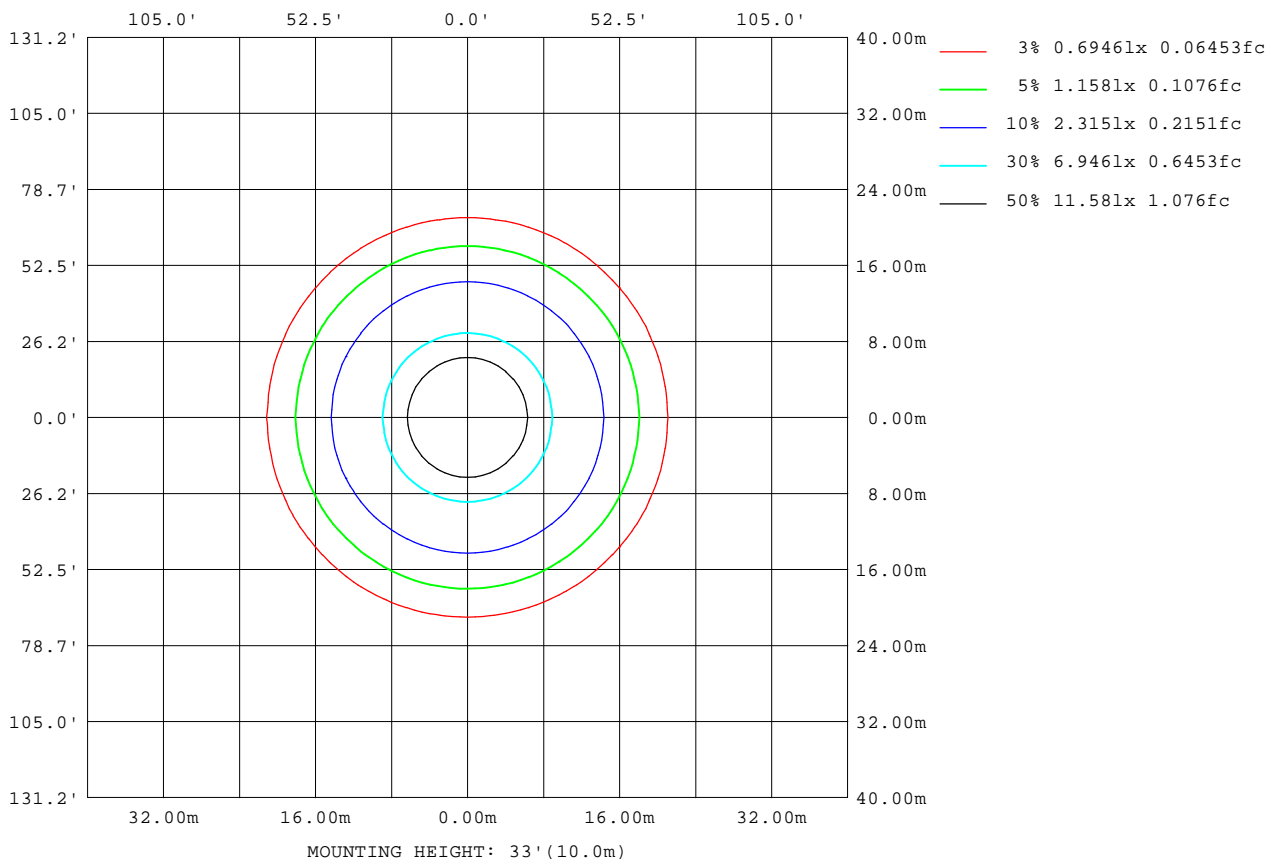
Note:The Curves indicate the illuminated area and the average illumination when the luminaire is at different distance.

C Range: 0 - 360DEG
 C Interval: 5.0DEG
 Test Speed: HIGH
 Temperature:26DEG
 Operators:NEIKO
 Test Date:2018-12-10

γ Range: 0 - 180DEG
 γ Interval: 0.5DEG
 Test System:EVERFINE GO-2000B_V1 SYSTEM V2.0.350
 Humidity:56%
 Test Distance:12.218m [K=1.0000]
 Remarks:

ISOLUX DIAGRAM

Test:U:120.0V I:0.5026A P:59.69W PF:0.9896 Lamp Flux:3607x1 lm		
NAME: ASD Lighting corp	TYPE:LED PANEL	WEIGHT:
SPEC.:ASD-ELP02-24D6050-STD	DIM.: 2x4	SERIAL No.:BLD20181210P27
MFR.: ASD Lighting corp	SUR.:0.56*1.17	Shielding Angle:



C Range: 0 - 360DEG
 C Interval: 5.0DEG
 Test Speed: HIGH
 Temperature:26DEG
 Operators:NEIKO
 Test Date:2018-12-10

γ Range: 0 - 180DEG
 γ Interval: 0.5DEG
 Test System:EVERFINE GO-2000B_V1 SYSTEM V2.0.350
 Humidity:56%
 Test Distance:12.218m [K=1.0000]
 Remarks:

LED Avg.L Report

Test:U:120.0V I:0.5026A P:59.69W PF:0.9896 Lamp Flux:3607x1 lm		
NAME: ASD Lighting corp	TYPE:LED PANEL	WEIGHT:
SPEC.:ASD-ELP02-24D6050-STD	DIM.: 2x4	SERIAL No.:BLD20181210P27
MFR.: ASD Lighting corp	SUR.:0.56*1.17	Shielding Angle:

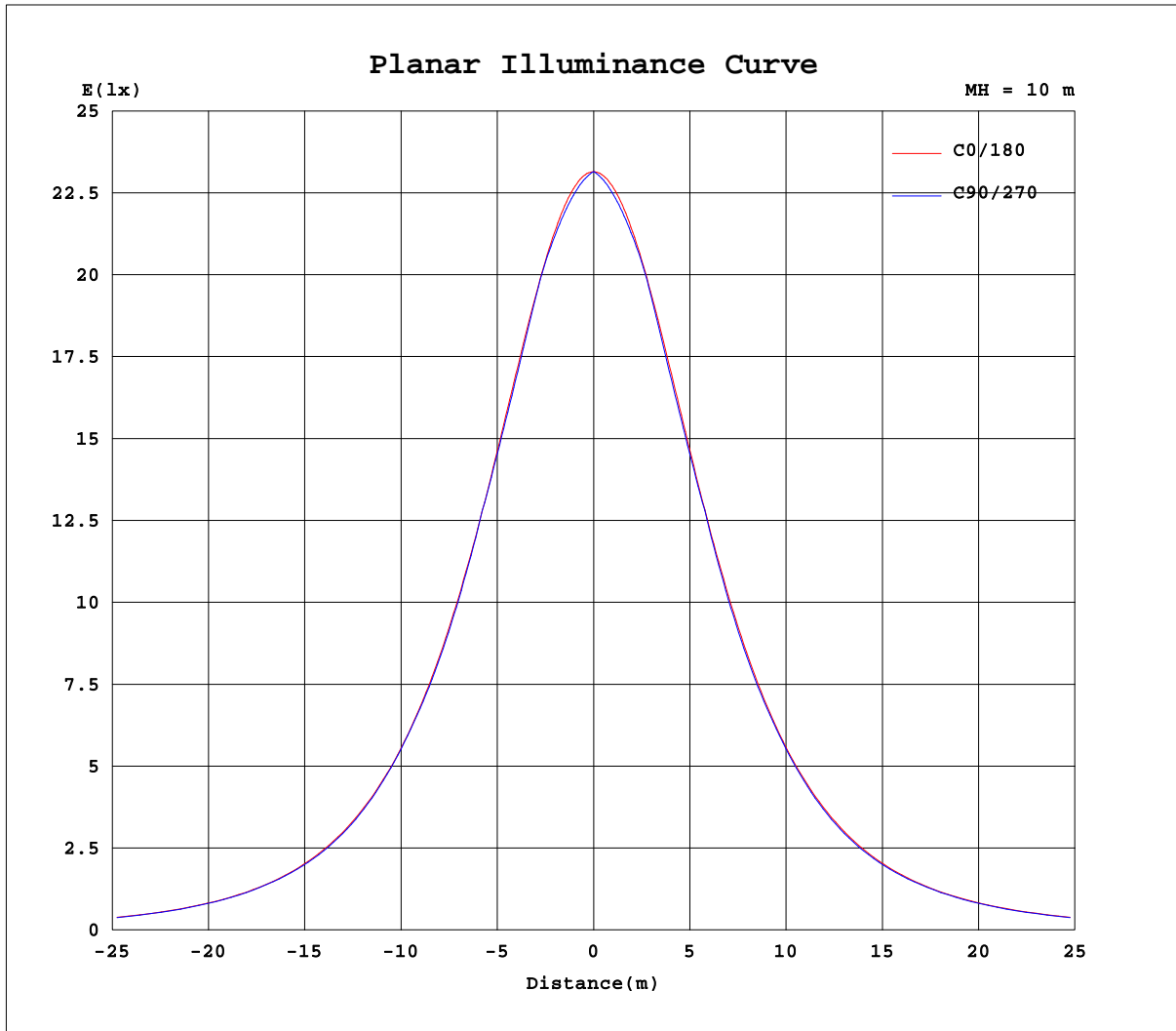
AvgL	cd/m2
L_0~180(65)av	3122
L_0~180(75)av	2859
L_0~180(85)av	1785
L_90~270(65)av	3072
L_90~270(75)av	2800
L_90~270(85)av	2362
L_45(65)av	3078
L_45(75)av	2819
L_45(85)av	2369

Standard: GB/T 29293-2012

C Range: 0 - 360DEG
C Interval: 5.0DEG
Test Speed: HIGH
Temperature:26DEG
Operators:NEIKO
Test Date:2018-12-10

γ Range: 0 - 180DEG
 γ Interval: 0.5DEG
Test System:EVERFINE GO-2000B_V1 SYSTEM V2.0.350
Humidity:56%
Test Distance:12.218m [K=1.0000]
Remarks:

Planar Illuminance Curve



C Range: 0 - 360DEG
 C Interval: 5.0DEG
 Test Speed: HIGH
 Temperature: 26DEG
 Operators: NEIKO
 Test Date: 2018-12-10

γ Range: 0 - 180DEG
 γ Interval: 0.5DEG
 Test System: EVERFINE GO-2000B_V1 SYSTEM V2.0.350
 Humidity: 56%
 Test Distance: 12.218m [K=1.0000]
 Remarks:

LUMINOUS DISTRIBUTION INTENSITY DATA

Test:U:120.0V I:0.5026A P:59.69W PF:0.9896 Lamp Flux:3607x1 lm		
NAME: ASD Lighting corp	TYPE:LED PANEL	WEIGHT:
SPEC.:ASD-ELP02-24D6050-STD	DIM.: 2x4	SERIAL No.:BLD20181210P27
MFR.: ASD Lighting corp	SUR.:0.56*1.17	Shielding Angle:

Table--1

UNIT: cd

C(DEG) γ (DEG)	0	5	10	15	20	25	30	35	40	45	50	55	60	65	70	75	80	85	90
0	2315	2315	2315	2315	2315	2315	2315	2315	2315	2315	2315	2315	2315	2315	2315	2315	2315	2315	2315
5	2305	2303	2300	2298	2296	2295	2293	2292	2291	2290	2289	2288	2287	2287	2287	2286	2286	2286	2286
10	2275	2271	2267	2263	2260	2258	2256	2255	2255	2254	2254	2255	2255	2255	2256	2256	2257	2257	2257
15	2227	2220	2215	2211	2208	2207	2206	2207	2208	2210	2213	2215	2218	2221	2222	2222	2222	2222	2223
20	2160	2151	2145	2141	2140	2140	2143	2147	2152	2155	2156	2153	2150	2147	2145	2144	2143	2143	2143
25	2074	2064	2058	2055	2056	2060	2067	2070	2068	2062	2059	2057	2056	2055	2056	2057	2057	2058	2058
30	1972	1961	1955	1955	1959	1967	1968	1960	1956	1954	1954	1956	1959	1962	1965	1968	1971	1972	1973
35	1853	1841	1837	1839	1848	1849	1840	1837	1837	1840	1845	1852	1848	1844	1841	1840	1839	1838	1838
40	1720	1707	1704	1711	1717	1707	1704	1706	1712	1716	1709	1705	1703	1702	1702	1703	1703	1703	1704
45	1572	1559	1559	1569	1561	1557	1560	1570	1562	1557	1555	1555	1557	1560	1563	1565	1565	1565	1565
50	1411	1398	1403	1406	1398	1401	1407	1399	1396	1397	1400	1404	1405	1401	1399	1397	1396	1395	1395
55	1239	1227	1237	1228	1228	1234	1226	1225	1229	1233	1229	1225	1223	1222	1221	1221	1221	1221	1222
60	1056	1047	1054	1047	1054	1046	1047	1052	1048	1044	1042	1042	1042	1043	1044	1046	1047	1047	1048
65	868	862	862	865	859	862	863	858	857	857	858	859	858	857	857	856	856	856	856
70	676	676	669	666	669	669	667	669	670	669	668	667	666	665	665	665	665	665	665
75	486	477	464	464	467	472	478	481	481	480	480	480	479	479	478	478	477	477	478
80	296	264	265	271	282	291	297	301	302	302	300	298	298	299	299	300	300	301	301
85	106	96.4	106	116	124	129	135	138	140	141	141	140	140	140	140	140	140	141	141
90	1.59	7.76	7.90	8.76	10.2	11.9	13.4	14.8	16.1	17.2	18.1	18.9	19.9	20.8	21.6	22.5	23.2	23.7	23.9
95	0.00	0.00	0.00	0.00	0.00	0.00	0.00	0.00	0.00	0.00	0.00	0.00	0.00	0.00	0.00	0.00	0.00	0.00	0.00
100	0.00	0.00	0.00	0.00	0.00	0.00	0.00	0.00	0.00	0.00	0.00	0.00	0.00	0.00	0.00	0.00	0.00	0.00	0.00
105	0.00	0.00	0.00	0.00	0.00	0.00	0.00	0.00	0.00	0.00	0.00	0.00	0.00	0.00	0.00	0.00	0.00	0.00	0.00
110	0.00	0.00	0.00	0.00	0.00	0.00	0.00	0.00	0.00	0.00	0.00	0.00	0.00	0.00	0.00	0.00	0.00	0.00	0.00
115	0.00	0.00	0.00	0.00	0.00	0.00	0.00	0.00	0.00	0.00	0.00	0.00	0.00	0.00	0.00	0.00	0.00	0.00	0.00
120	0.00	0.00	0.00	0.00	0.00	0.00	0.00	0.00	0.00	0.00	0.00	0.00	0.00	0.00	0.00	0.00	0.00	0.00	0.00
125	0.00	0.00	0.00	0.00	0.00	0.00	0.00	0.00	0.00	0.00	0.00	0.00	0.00	0.00	0.00	0.00	0.00	0.00	0.00
130	0.00	0.00	0.00	0.00	0.00	0.00	0.00	0.00	0.00	0.00	0.00	0.00	0.00	0.00	0.00	0.00	0.00	0.00	0.00
135	0.00	0.00	0.00	0.00	0.00	0.00	0.00	0.00	0.00	0.00	0.00	0.00	0.00	0.00	0.00	0.00	0.00	0.00	0.00
140	0.00	0.00	0.00	0.00	0.00	0.00	0.00	0.00	0.00	0.00	0.00	0.00	0.00	0.00	0.00	0.00	0.00	0.00	0.00
145	0.00	0.00	0.00	0.00	0.00	0.00	0.00	0.00	0.00	0.00	0.00	0.00	0.00	0.00	0.00	0.00	0.00	0.00	0.00
150	0.00	0.00	0.00	0.00	0.00	0.00	0.00	0.00	0.00	0.00	0.00	0.00	0.00	0.00	0.00	0.00	0.00	0.00	0.00
155	0.00	0.00	0.00	0.00	0.00	0.00	0.00	0.00	0.00	0.00	0.00	0.00	0.00	0.00	0.00	0.00	0.00	0.00	0.00
160	0.00	0.00	0.00	0.00	0.00	0.00	0.00	0.00	0.00	0.00	0.00	0.00	0.00	0.00	0.00	0.00	0.00	0.00	0.00
165	0.00	0.00	0.00	0.00	0.00	0.00	0.00	0.00	0.00	0.00	0.00	0.00	0.00	0.00	0.00	0.00	0.00	0.00	0.00
170	0.00	0.00	0.00	0.00	0.00	0.00	0.00	0.00	0.00	0.00	0.00	0.00	0.00	0.00	0.00	0.00	0.00	0.00	0.00
175	0.00	0.00	0.00	0.00	0.00	0.00	0.00	0.00	0.00	0.00	0.00	0.00	0.00	0.00	0.00	0.00	0.00	0.00	0.00
180	0.00	0.00	0.00	0.00	0.00	0.00	0.00	0.00	0.00	0.00	0.00	0.00	0.00	0.00	0.00	0.00	0.00	0.00	0.00

C Range: 0 - 360DEG
 C Interval: 5.0DEG
 Test Speed: HIGH
 Temperature:26DEG
 Operators:NEIKO
 Test Date:2018-12-10

γ Range: 0 - 180DEG
 γ Interval: 0.5DEG
 Test System:EVERFINE GO-2000B_V1 SYSTEM V2.0.350
 Humidity:56%
 Test Distance:12.218m [K=1.0000]
 Remarks:

LUMINOUS DISTRIBUTION INTENSITY DATA

Test:U:120.0V I:0.5026A P:59.69W PF:0.9896 Lamp Flux:3607x1 lm		
NAME: ASD Lighting corp	TYPE:LED PANEL	WEIGHT:
SPEC.:ASD-ELP02-24D6050-STD	DIM.: 2x4	SERIAL No.:BLD20181210P27
MFR.: ASD Lighting corp	SUR.:0.56*1.17	Shielding Angle:

Table--2

UNIT: cd

C(DEG) γ (DEG)	95	100	105	110	115	120	125	130	135	140	145	150	155	160	165	170	175	180	185
0	2315	2315	2315	2315	2315	2315	2315	2315	2315	2315	2315	2315	2315	2315	2315	2315	2315	2315	2315
5	2286	2287	2287	2287	2287	2288	2288	2289	2290	2291	2292	2294	2295	2297	2299	2301	2304	2306	2304
10	2257	2257	2257	2256	2256	2256	2255	2255	2255	2256	2257	2258	2260	2262	2265	2268	2273	2277	2273
15	2222	2222	2222	2223	2221	2219	2216	2214	2211	2210	2208	2208	2208	2210	2213	2217	2223	2230	2223
20	2143	2144	2144	2146	2148	2150	2154	2156	2156	2153	2148	2145	2143	2142	2144	2148	2155	2163	2155
25	2058	2058	2057	2057	2057	2057	2058	2060	2064	2069	2072	2069	2062	2059	2059	2062	2068	2079	2068
30	1972	1971	1969	1967	1964	1961	1958	1956	1956	1958	1963	1970	1970	1961	1958	1959	1965	1977	1965
35	1839	1839	1841	1843	1846	1850	1855	1848	1843	1840	1839	1843	1851	1851	1842	1841	1846	1860	1847
40	1704	1704	1703	1703	1704	1705	1708	1713	1720	1716	1709	1707	1710	1719	1714	1708	1712	1726	1712
45	1565	1566	1566	1564	1561	1559	1558	1558	1560	1566	1574	1564	1561	1564	1572	1563	1564	1579	1564
50	1396	1397	1398	1400	1402	1406	1406	1402	1399	1399	1402	1412	1405	1401	1408	1406	1403	1417	1403
55	1222	1222	1222	1223	1224	1225	1227	1231	1234	1232	1229	1230	1239	1233	1232	1239	1231	1245	1232
60	1048	1048	1047	1047	1046	1045	1045	1045	1047	1051	1054	1050	1050	1059	1051	1056	1051	1063	1051
65	857	857	858	859	860	862	863	862	861	860	861	865	862	860	867	861	865	874	865
70	666	666	667	667	668	669	670	672	673	675	672	669	665	661	659	662	673	682	677
75	478	479	480	481	482	483	483	484	484	485	484	479	472	463	456	454	463	491	486
80	301	302	302	302	302	302	302	304	305	304	302	297	290	281	269	255	255	290	299
85	141	141	140	141	141	141	141	141	141	140	138	135	130	123	114	102	88.3	99.4	123
90	23.6	23.0	22.3	21.5	20.5	19.4	18.0	16.8	15.8	14.8	13.7	12.4	10.9	9.33	7.95	6.80	6.61	4.30	1.92
95	0.00	0.00	0.00	0.00	0.00	0.00	0.00	0.00	0.00	0.00	0.00	0.00	0.00	0.00	0.00	0.00	0.00	0.00	0.00
100	0.00	0.00	0.00	0.00	0.00	0.00	0.00	0.00	0.00	0.00	0.00	0.00	0.00	0.00	0.00	0.00	0.00	0.00	0.00
105	0.00	0.00	0.00	0.00	0.00	0.00	0.00	0.00	0.00	0.00	0.00	0.00	0.00	0.00	0.00	0.00	0.00	0.00	0.00
110	0.00	0.00	0.00	0.00	0.00	0.00	0.00	0.00	0.00	0.00	0.00	0.00	0.00	0.00	0.00	0.00	0.00	0.00	0.00
115	0.00	0.00	0.00	0.00	0.00	0.00	0.00	0.00	0.00	0.00	0.00	0.00	0.00	0.00	0.00	0.00	0.00	0.00	0.00
120	0.00	0.00	0.00	0.00	0.00	0.00	0.00	0.00	0.00	0.00	0.00	0.00	0.00	0.00	0.00	0.00	0.00	0.00	0.00
125	0.00	0.00	0.00	0.00	0.00	0.00	0.00	0.00	0.00	0.00	0.00	0.00	0.00	0.00	0.00	0.00	0.00	0.00	0.00
130	0.00	0.00	0.00	0.00	0.00	0.00	0.00	0.00	0.00	0.00	0.00	0.00	0.00	0.00	0.00	0.00	0.00	0.00	0.00
135	0.00	0.00	0.00	0.00	0.00	0.00	0.00	0.00	0.00	0.00	0.00	0.00	0.00	0.00	0.00	0.00	0.00	0.00	0.00
140	0.00	0.00	0.00	0.00	0.00	0.00	0.00	0.00	0.00	0.00	0.00	0.00	0.00	0.00	0.00	0.00	0.00	0.00	0.00
145	0.00	0.00	0.00	0.00	0.00	0.00	0.00	0.00	0.00	0.00	0.00	0.00	0.00	0.00	0.00	0.00	0.00	0.00	0.00
150	0.00	0.00	0.00	0.00	0.00	0.00	0.00	0.00	0.00	0.00	0.00	0.00	0.00	0.00	0.00	0.00	0.00	0.00	0.00
155	0.00	0.00	0.00	0.00	0.00	0.00	0.00	0.00	0.00	0.00	0.00	0.00	0.00	0.00	0.00	0.00	0.00	0.00	0.00
160	0.00	0.00	0.00	0.00	0.00	0.00	0.00	0.00	0.00	0.00	0.00	0.00	0.00	0.00	0.00	0.00	0.00	0.00	0.00
165	0.00	0.00	0.00	0.00	0.00	0.00	0.00	0.00	0.00	0.00	0.00	0.00	0.00	0.00	0.00	0.00	0.00	0.00	0.00
170	0.00	0.00	0.00	0.00	0.00	0.00	0.00	0.00	0.00	0.00	0.00	0.00	0.00	0.00	0.00	0.00	0.00	0.00	0.00
175	0.00	0.00	0.00	0.00	0.00	0.00	0.00	0.00	0.00	0.00	0.00	0.00	0.00	0.00	0.00	0.00	0.00	0.00	0.00
180	0.00	0.00	0.00	0.00	0.00	0.00	0.00	0.00	0.00	0.00	0.00	0.00	0.00	0.00	0.00	0.00	0.00	0.00	0.00

C Range: 0 - 360DEG
 C Interval: 5.0DEG
 Test Speed: HIGH
 Temperature:26DEG
 Operators:NEIKO
 Test Date:2018-12-10

γ Range: 0 - 180DEG
 γ Interval: 0.5DEG
 Test System:EVERFINE GO-2000B_V1 SYSTEM V2.0.350
 Humidity:56%
 Test Distance:12.218m [K=1.0000]
 Remarks:

LUMINOUS DISTRIBUTION INTENSITY DATA

Test:U:120.0V I:0.5026A P:59.69W PF:0.9896 Lamp Flux:3607x1 lm		
NAME: ASD Lighting corp	TYPE:LED PANEL	WEIGHT:
SPEC.:ASD-ELP02-24D6050-STD	DIM.: 2x4	SERIAL No.:BLD20181210P27
MFR.: ASD Lighting corp	SUR.:0.56*1.17	Shielding Angle:

Table--3

UNIT: cd

C(DEG) γ (DEG)	190	195	200	205	210	215	220	225	230	235	240	245	250	255	260	265	270	275	280
0	2315	2315	2315	2315	2315	2315	2315	2315	2315	2315	2315	2315	2315	2315	2315	2315	2315	2315	2315
5	2301	2299	2297	2295	2294	2292	2291	2290	2289	2289	2288	2287	2287	2287	2287	2286	2286	2286	2286
10	2268	2265	2262	2260	2258	2257	2256	2256	2255	2256	2256	2256	2257	2257	2257	2257	2257	2257	2257
15	2217	2213	2210	2209	2208	2209	2210	2212	2214	2217	2219	2222	2223	2223	2223	2223	2223	2223	2222
20	2148	2144	2143	2143	2145	2149	2153	2157	2157	2154	2151	2148	2146	2145	2144	2143	2143	2143	2143
25	2062	2059	2059	2063	2069	2073	2070	2064	2061	2058	2057	2057	2057	2057	2057	2058	2058	2057	2057
30	1959	1958	1962	1970	1971	1963	1959	1957	1957	1958	1961	1964	1966	1969	1971	1972	1972	1972	1970
35	1841	1843	1851	1851	1843	1840	1841	1844	1849	1855	1850	1846	1843	1841	1839	1838	1838	1838	1838
40	1709	1715	1720	1710	1707	1710	1717	1720	1713	1708	1705	1704	1703	1703	1704	1703	1704	1703	1703
45	1563	1572	1565	1561	1565	1575	1566	1561	1558	1558	1559	1561	1564	1566	1566	1565	1565	1565	1565
50	1406	1409	1402	1406	1412	1403	1399	1399	1403	1406	1406	1402	1400	1398	1397	1396	1396	1396	1396
55	1240	1232	1233	1239	1230	1228	1232	1234	1231	1227	1225	1224	1223	1223	1223	1223	1222	1222	1222
60	1056	1051	1059	1050	1049	1053	1050	1046	1045	1044	1045	1046	1047	1048	1048	1049	1049	1049	1048
65	864	870	863	863	864	860	859	859	861	862	861	860	859	858	858	858	857	858	858
70	674	673	674	672	670	671	672	671	670	669	668	667	667	667	667	667	667	667	667
75	486	485	481	483	483	482	481	481	481	481	481	481	480	479	479	479	479	479	480
80	299	297	297	295	297	299	300	300	300	298	299	299	299	299	299	299	299	299	299
85	120	120	126	128	130	131	132	132	132	132	131	131	131	131	131	131	131	131	130
90	1.92	1.92	2.46	3.60	4.79	6.05	7.41	8.65	9.93	11.1	12.2	13.2	14.0	14.6	15.3	15.7	15.9	15.7	15.0
95	0.00	0.00	0.00	0.00	0.00	0.00	0.00	0.00	0.00	0.00	0.00	0.00	0.00	0.00	0.00	0.00	0.00	0.00	0.00
100	0.00	0.00	0.00	0.00	0.00	0.00	0.00	0.00	0.00	0.00	0.00	0.00	0.00	0.00	0.00	0.00	0.00	0.00	0.00
105	0.00	0.00	0.00	0.00	0.00	0.00	0.00	0.00	0.00	0.00	0.00	0.00	0.00	0.00	0.00	0.00	0.00	0.00	0.00
110	0.00	0.00	0.00	0.00	0.00	0.00	0.00	0.00	0.00	0.00	0.00	0.00	0.00	0.00	0.00	0.00	0.00	0.00	0.00
115	0.00	0.00	0.00	0.00	0.00	0.00	0.00	0.00	0.00	0.00	0.00	0.00	0.00	0.00	0.00	0.00	0.00	0.00	0.00
120	0.00	0.00	0.00	0.00	0.00	0.00	0.00	0.00	0.00	0.00	0.00	0.00	0.00	0.00	0.00	0.00	0.00	0.00	0.00
125	0.00	0.00	0.00	0.00	0.00	0.00	0.00	0.00	0.00	0.00	0.00	0.00	0.00	0.00	0.00	0.00	0.00	0.00	0.00
130	0.00	0.00	0.00	0.00	0.00	0.00	0.00	0.00	0.00	0.00	0.00	0.00	0.00	0.00	0.00	0.00	0.00	0.00	0.00
135	0.00	0.00	0.00	0.00	0.00	0.00	0.00	0.00	0.00	0.00	0.00	0.00	0.00	0.00	0.00	0.00	0.00	0.00	0.00
140	0.00	0.00	0.00	0.00	0.00	0.00	0.00	0.00	0.00	0.00	0.00	0.00	0.00	0.00	0.00	0.00	0.00	0.00	0.00
145	0.00	0.00	0.00	0.00	0.00	0.00	0.00	0.00	0.00	0.00	0.00	0.00	0.00	0.00	0.00	0.00	0.00	0.00	0.00
150	0.00	0.00	0.00	0.00	0.00	0.00	0.00	0.00	0.00	0.00	0.00	0.00	0.00	0.00	0.00	0.00	0.00	0.00	0.00
155	0.00	0.00	0.00	0.00	0.00	0.00	0.00	0.00	0.00	0.00	0.00	0.00	0.00	0.00	0.00	0.00	0.00	0.00	0.00
160	0.00	0.00	0.00	0.00	0.00	0.00	0.00	0.00	0.00	0.00	0.00	0.00	0.00	0.00	0.00	0.00	0.00	0.00	0.00
165	0.00	0.00	0.00	0.00	0.00	0.00	0.00	0.00	0.00	0.00	0.00	0.00	0.00	0.00	0.00	0.00	0.00	0.00	0.00
170	0.00	0.00	0.00	0.00	0.00	0.00	0.00	0.00	0.00	0.00	0.00	0.00	0.00	0.00	0.00	0.00	0.00	0.00	0.00
175	0.00	0.00	0.00	0.00	0.00	0.00	0.00	0.00	0.00	0.00	0.00	0.00	0.00	0.00	0.00	0.00	0.00	0.00	0.00
180	0.00	0.00	0.00	0.00	0.00	0.00	0.00	0.00	0.00	0.00	0.00	0.00	0.00	0.00	0.00	0.00	0.00	0.00	0.00

C Range: 0 - 360DEG
 C Interval: 5.0DEG
 Test Speed: HIGH
 Temperature:26DEG
 Operators:NEIKO
 Test Date:2018-12-10

γ Range: 0 - 180DEG
 γ Interval: 0.5DEG
 Test System:EVERFINE GO-2000B_V1 SYSTEM V2.0.350
 Humidity:56%
 Test Distance:12.218m [K=1.0000]
 Remarks:

LUMINOUS DISTRIBUTION INTENSITY DATA

Test:U:120.0V I:0.5026A P:59.69W PF:0.9896 Lamp Flux:3607x1 lm		
NAME: ASD Lighting corp	TYPE:LED PANEL	WEIGHT:
SPEC.:ASD-ELP02-24D6050-STD	DIM.: 2x4	SERIAL No.:BLD20181210P27
MFR.: ASD Lighting corp	SUR.:0.56*1.17	Shielding Angle:

Table--4

UNIT: cd

C(DEG) γ (DEG)	285	290	295	300	305	310	315	320	325	330	335	340	345	350	355				
0	2315	2315	2315	2315	2315	2315	2315	2315	2315	2315	2315	2315	2315	2315	2315				
5	2287	2287	2287	2288	2288	2289	2290	2291	2292	2293	2295	2296	2298	2300	2303				
10	2256	2256	2256	2255	2255	2255	2255	2255	2255	2257	2258	2260	2263	2267	2271				
15	2223	2223	2221	2218	2216	2213	2210	2208	2207	2206	2207	2208	2211	2215	2220				
20	2144	2145	2147	2150	2153	2155	2155	2152	2147	2143	2140	2140	2141	2145	2151				
25	2056	2056	2055	2055	2056	2059	2062	2068	2070	2067	2060	2056	2055	2058	2064				
30	1968	1965	1961	1958	1956	1954	1954	1956	1960	1968	1968	1959	1955	1955	1961				
35	1839	1841	1843	1847	1851	1845	1840	1837	1836	1840	1849	1849	1839	1837	1841				
40	1702	1702	1702	1702	1705	1709	1716	1712	1706	1704	1707	1718	1711	1705	1707				
45	1565	1563	1559	1557	1555	1555	1557	1561	1570	1560	1557	1562	1570	1560	1559				
50	1397	1399	1401	1404	1404	1400	1396	1395	1398	1407	1401	1398	1406	1403	1399				
55	1222	1222	1222	1223	1225	1229	1232	1229	1225	1226	1234	1228	1229	1237	1228				
60	1046	1045	1044	1043	1042	1042	1044	1048	1052	1046	1046	1054	1047	1054	1048				
65	858	858	859	860	860	859	857	857	858	863	861	859	865	861	862				
70	667	667	667	668	668	669	669	670	668	668	671	673	670	670	675				
75	480	481	481	481	481	481	481	481	481	481	481	480	484	482	484				
80	299	299	299	299	299	300	301	300	300	297	295	295	295	298	296				
85	130	130	131	131	131	131	131	131	131	130	128	125	119	119	123				
90	14.1	13.4	12.6	11.4	10.3	9.07	7.74	6.49	5.21	3.89	2.65	1.94	1.90	1.90	1.90				
95	0.00	0.00	0.00	0.00	0.00	0.00	0.00	0.00	0.00	0.00	0.00	0.00	0.00	0.00	0.00				
100	0.00	0.00	0.00	0.00	0.00	0.00	0.00	0.00	0.00	0.00	0.00	0.00	0.00	0.00	0.00				
105	0.00	0.00	0.00	0.00	0.00	0.00	0.00	0.00	0.00	0.00	0.00	0.00	0.00	0.00	0.00				
110	0.00	0.00	0.00	0.00	0.00	0.00	0.00	0.00	0.00	0.00	0.00	0.00	0.00	0.00	0.00				
115	0.00	0.00	0.00	0.00	0.00	0.00	0.00	0.00	0.00	0.00	0.00	0.00	0.00	0.00	0.00				
120	0.00	0.00	0.00	0.00	0.00	0.00	0.00	0.00	0.00	0.00	0.00	0.00	0.00	0.00	0.00				
125	0.00	0.00	0.00	0.00	0.00	0.00	0.00	0.00	0.00	0.00	0.00	0.00	0.00	0.00	0.00				
130	0.00	0.00	0.00	0.00	0.00	0.00	0.00	0.00	0.00	0.00	0.00	0.00	0.00	0.00	0.00				
135	0.00	0.00	0.00	0.00	0.00	0.00	0.00	0.00	0.00	0.00	0.00	0.00	0.00	0.00	0.00				
140	0.00	0.00	0.00	0.00	0.00	0.00	0.00	0.00	0.00	0.00	0.00	0.00	0.00	0.00	0.00				
145	0.00	0.00	0.00	0.00	0.00	0.00	0.00	0.00	0.00	0.00	0.00	0.00	0.00	0.00	0.00				
150	0.00	0.00	0.00	0.00	0.00	0.00	0.00	0.00	0.00	0.00	0.00	0.00	0.00	0.00	0.00				
155	0.00	0.00	0.00	0.00	0.00	0.00	0.00	0.00	0.00	0.00	0.00	0.00	0.00	0.00	0.00				
160	0.00	0.00	0.00	0.00	0.00	0.00	0.00	0.00	0.00	0.00	0.00	0.00	0.00	0.00	0.00				
165	0.00	0.00	0.00	0.00	0.00	0.00	0.00	0.00	0.00	0.00	0.00	0.00	0.00	0.00	0.00				
170	0.00	0.00	0.00	0.00	0.00	0.00	0.00	0.00	0.00	0.00	0.00	0.00	0.00	0.00	0.00				
175	0.00	0.00	0.00	0.00	0.00	0.00	0.00	0.00	0.00	0.00	0.00	0.00	0.00	0.00	0.00				
180	0.00	0.00	0.00	0.00	0.00	0.00	0.00	0.00	0.00	0.00	0.00	0.00	0.00	0.00	0.00				

C Range: 0 - 360DEG
 C Interval: 5.0DEG
 Test Speed: HIGH
 Temperature:26DEG
 Operators:NEIKO
 Test Date:2018-12-10

γ Range: 0 - 180DEG
 γ Interval: 0.5DEG
 Test System:EVERFINE GO-2000B_V1 SYSTEM V2.0.350
 Humidity:56%
 Test Distance:12.218m [K=1.0000]
 Remarks: