



LED EDGE-LIT FLAT PANELS

Premium Series

► **DESIGN & OPTIONS** - LED EDGE-LIT FLAT PANEL comes with a unique design and an anti-corrosion aluminum frame with fast heat dissipation. It also features a 0-10V dimmable driver with circuit overload, short circuit, and low-voltage protection, making it both safe and reliable. The non-yellowing PC diffuser provides uniform light distribution with no glare. It comes with 120-277V and size 2x2.

► **INSTALLATION** - This fixture has convenient recessed mounting for drop in installation with standard grid ceilings. It can also be suspended via aircraft cable or wire (not included) to the attached clips. The clips can be folded over the "T" grid, locking the light to the grid. The low frame for surface mounting is sold separately. Refer to install instructions for detailed steps.

► **APPLICATION** - These fixtures are perfect for commercial, industrial, and residential applications such as: offices, hospitals, schools, retail, and workshops. The fixture is Damp location rated and can operate in temperatures between 14+104°F (-10+40°C).

► **ENERGY SAVINGS & EFFICIENCY** - This fixture provides a lumen output that is equal to or higher than traditional fluorescent architectural troffers and can cut your electric bill by up to 80% instantly. With a lifespan of 54,000 hours, these fixtures are made to last decades under normal operation! This fixture will save you a significant amount of money in its lifetime.

► **CERTIFICATION & WARRANTY** - Buy with confidence: ASD provides a 5-year warranty along with UL and DLC Premium certifications to guarantee top quality products and safety!

Top US certifications allow participation in rebates; please check the rebate programs available in your state.

<i>Catalog number</i>	
<i>Notes</i>	
<i>Type</i>	



PRODUCT LEGEND:

Family	Size	Dimmable	Watts	CCT	Series
ASD-ELP	XX	X	XX	XX	PRM
Edge-Lit Panel	22 = type 2x2	D = Dimmable	27 = 27 W	40 = 4,000 K	PRM = Premium

LED EDGE-LIT FLAT PANEL:

Model	Type	Watts	Dimmable	CCT	Lumens	Dimensions (LxWxH)
ASD-ELP22D2740PRM	2x2	27 W	0-10 V	4,000 K	3,607 lm	23.7" x 23.7" x 0.4"

ORDERING INFORMATION

LED UFO HIGH BAY FIXTURE:

Model	UPC	Pcs. per Carton	Carton Size	Carton Weight	GTIN 14 for Carton
ASD-ELP22D2740PRM	857622006466	4	26.4" x 26.6" x 8.9"	38.5 lb	10857622006463

ACCESSORIES:

Model	Name	Materials	Weight	Dimensions
ASD-FDW-ELP22	ASD Sheetrock mounting frame for ELP 2x2	Iron	0.9 lb (0.4 kg)	25 5/16" x 25 5/16" x 1"
ASD-CHS4	ASD 4" Ceiling Hanging set for LED Panels and Troffers	Iron	0.4 lb (0.2 kg)	39.37"

Model	UPC	Pcs. per Carton	Carton Size	Carton Weight	GTIN 14
ASD-FDW-ELP22	855029006393	20	26.8" x 10.4" x 7.9"	25.1 lb	10855029006390
ASD-CHS4	859961005148	50	10.4" x 10.4" x 7.7"	23.7 lb	10859961005145

For most up-to-date spec sheets please refer to asd-lighting.com



LED EDGE-LIT FLAT PANELS

Premium Series

PRODUCT SPECIFICATIONS:

Construction & Materials		Control	
Housing	Aluminum	Linking Lengths/Qty	15 cable feet x 20 panels
Lens	Translucent white	Dimming compatible controls	
Finish	White	Brand	Leviton Lutron Cooper
Weight	8 lbs (3.6 kg)	Models	IPL710 DLZ NFTV SF10P-W
Environmental System		Regular and Voluntary Certifications	
Work Environment	Suitable for Damp Locations, IP40	5-year limited warranty	
Operating Temperature	-14°F to 104°F (-10°C to +40°C)	DesignLights Consortium (DLC) listed (Classification: Premium series)	
L70 Life	R > 54,000 hrs; C > 122,000 hrs	Main: Indoor Luminaires; General Application: Troffer	
Optical System		Primary Use: 2x2 Luminaires for Ambient Lighting of Interior Commercial Spaces	
Luminous Flux	3,607 lm	cULus certified E473854	
Color Temperature	4,000 K		
CRI	> 80		
Electrical System			
Input Voltage	120-277 V		
Power Consumption	27 W		
Power Factor	≥ 0.9		
Output voltage	30-40 V		
Max output current	380 mA		

PACKAGE CONTENTS:

Description	Q-ty
LED Edge-Lit Flat Panel	2
Box	1
Cut sheet	2

INSTALLATION GUIDE

IMPORTANT SAFETY INFORMATION:

Please read all the instructions below before installation.

- ▶ Make sure that the supply voltage corresponds to the rated product voltage.
- ▶ The product is designed for indoor use only.

⚠ WARNING

RISK OF PERSONAL INJURY – READ and follow all WARNINGS and installation instructions.

Keep or give to the owner for future reference.

Risk of cuts: Wear gloves to prevent cuts or abrasions when removing from carton, handling, installing, and maintaining this product.

Risk of electric shock: This product must be installed in accordance with the applicable installation code by a person familiar with the construction and operation of the product and the hazards involved.

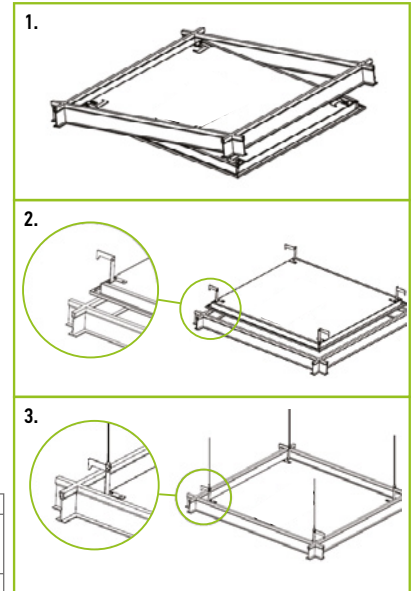
Risk of Fire: Minimum 194°F supply conductors. Consult a qualified electrician to ensure correct branch circuit conductor.

ASD® assumes no responsibility for claims arising out of improper or careless installation or handling of this product.

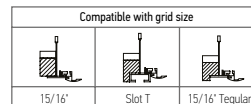
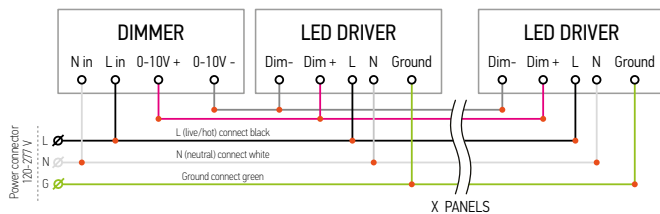
For recessed installation: Access above ceiling required. Inherently protected. Vapor barrier must be suitable for 194°F.

INSTALLATION STEPS RECESSED MOUNT:

1. Choose the ceiling panel where you want to install the product, and remove it. For convenience, move adjacent ceiling tiles. Fix the LED Panel into the ceiling: raise up the product above the bar, then place it on T-bars. Two bend points for all four tabs.
2. Secure the panel with the grid as shown in the picture. Ensure the tab is securely attached to the grid. Connect the wires into the junction box of the panel matching colors N, L and G using nuts.
3. Return the adjacent ceiling tiles to their places. Turn on the main power. Installation is finished.



ELECTRICAL SCHEMATIC DIAGRAM



For most up-to-date spec sheets please refer to asd-lighting.com

ASD LIGHTING CORP

E-mail: orders@asd-lighting.com | Web site: www.asd-lighting.com



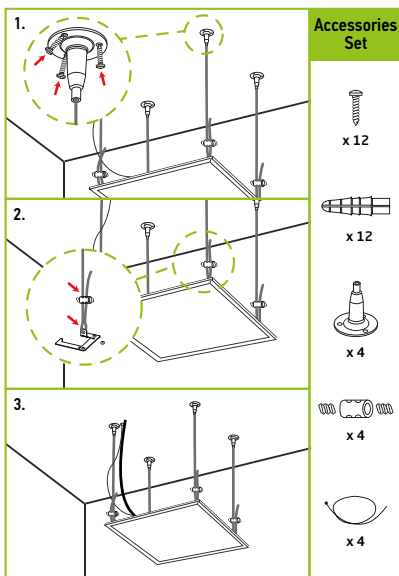


LED EDGE-LIT FLAT PANELS

Premium Series

SUSPENDED MOUNT ASD-CHS4 sold separately:

1. Make sure that the ceiling can hold the weight of the LED panel and install ceiling brackets suitable to support the weight of the LED panel. Affix cables.
2. Attach the suspended cables to the bends at the edges of the LED flat panel.
3. Connect the wires into the junction box of the panel matching colors N, L and G using nuts. Turn on the main power. Installation is finished.

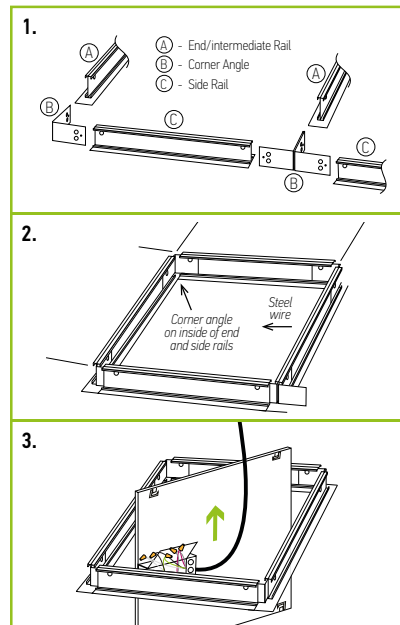


RECESSED SHEETROCK MOUNT ASD-FDW-ELP22 sold separately:

1. Following the picture above, slide part B into the inboard side of parts C and A as shown.
2. Place assembled frame into a ceiling opening and add steel wires for support as pictured below.

Note:

- ▶ For best results, attach supporting steel wires going into the ceiling to sides of frame after assembly.
 - ▶ End rail can be used as intermediate rail for tandem row.
3. After wiring fixture, carefully slide it through ceiling opening, rotate and drop fixture into place.



For most up-to-date spec sheets please refer to asd-lighting.com

ASD LIGHTING CORP

E-mail: orders@asd-lighting.com | Web site: www.asd-lighting.com

