



LED SECURITY WALLPACK WITH PHOTOCELL

- ▶ **DESIGN** - has a die-cast aluminum housing with excellent heat dissipation, and anti-glare PC lens with even light distribution. It is designed to operate on 120-277V circuits.
- ▶ **PHOTOCELL** - The built-in Dusk to Dawn Photocell will automatically turn the fixture on/off depending on the time of day.
- ▶ **BATTERY BACK-UP** - The built-in battery back-up provide 90 minutes of power in case of emergency.
- ▶ **COLOR SELECTABLE** - You can choose 3,000K warm white, 4,000K cool white or 5,000K daylight color temperature.
- ▶ **INSTALLATION** - The fixture can be mounted to a junction box or directly to a wall. Perfect commercial or industrial solution for outdoor security lighting, wall perimeter lighting, garages, storages, porches, entryways, stairways, and many other applications. It is also Wet Locations rated.
- ▶ **ADVANTAGES** - With lifespan up to 50,000 hours, these fixtures are made to last decades under normal operation! ASD provides a 5-year limited warranty along with UL certification to guarantee top quality products and safety!

Catalog number	
Notes	
Type	



Model	Watts	Voltage	Dimmable	Lumens	CCT	Finish	Dimensions (LxWxH)	Option
LSWP01								
ASD-LSWP01-13NCC-PC	13W	120-277 V	-	up to 1,622 lm	3CCT (3,000/4,000/5,000 K)	Black	8-3/16" x 5-3/8" x 2-13/16"	Photocell
ASD-LSWP01-18NCC-PC	18W	120-277 V	-	up to 2,187 lm	3CCT (3,000/4,000/5,000 K)	Black	8-3/16" x 5-3/8" x 2-13/16"	Photocell
ASD-LSWP01-26NCC-PC	26W	120-277 V	-	up to 3,385 lm	3CCT (3,000/4,000/5,000 K)	Black	8-3/16" x 5-3/8" x 2-13/16"	Photocell
LSWP01-EM WITH BATTERY BACK-UP								
ASD-LSWP01-A26AC-PC-4EM	13/18/26W	120-277 V	0-10 V	up to 3,857 lm	3CCT (3,000/4,000/5,000 K)	Black	5-1/2" x 4-1/16" x 8-3/16"	4W Battery back-up

For detailed luminous flux information please refer to Annex 1.

ANNEX 1

Model	Watts	3,000 K	4,000 K	5,000 K
ASD-LSWP01-13NCC-PC	13W	1,573 lm	1,618 lm	1,622 lm
ASD-LSWP01-18NCC-PC	18W	2,165 lm	2,170 lm	2,187 lm
ASD-LSWP01-26NCC-PC	26W	3,313 lm	3,344 lm	3,385 lm
ASD-LSWP01-A26AC-PC-4EM	13W	2,155 lm	2,296 lm	2,306 lm
	18W	2,777 lm	2,966 lm	2,964 lm
	26W	3,573 lm	3,857 lm	3,805 lm

For most up-to-date spec sheets please refer to asd-lighting.com



LED SECURITY WALLPACK WITH PHOTOCELL

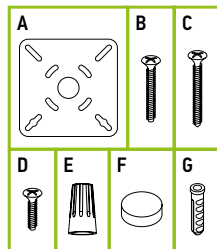
PRODUCT SPECIFICATIONS:

Construction & Materials			
Housing	Aluminum		
Lens	PC		
Finish	Black		
Weight	1.4 lbs (0.6 kg)	for EM model: 2.6 lbs (1.2 kg)	
Environmental system			
Work environment	Suitable for Wet Locations		
Operating temperature	-31°F to 104°F (-35°C to 40°C)		
	for EM model: 32°F to 104°F (0°C to 40°C)		
L-70 Life	R > 54,000 hrs; C > 125,000 hrs		
Optical system			
Color temperature	3CCT switch (3,000/4,000/5,000 K), 5,000 K by default		
CRI	> 70		
Electrical system			
Input voltage	120-277 V		
Max input current	ASD-LSWP01-13NCC-PC	0.13 A	
	ASD-LSWP01-18NCC-PC	0.18 A	
	ASD-LSWP01-26NCC-PC	0.26 A	
	ASD-LSWP01-A26AC-PC-4EM		
Inrush current (Action time)	10 A (0.3 S)	for EM model: 40 A (0.2 S)	
Off state power	0W		
Power consumption	ASD-LSWP01-13NCC-PC	13W	
	ASD-LSWP01-18NCC-PC	18W	
	ASD-LSWP01-26NCC-PC	26W	
	ASD-LSWP01-A26AC-PC-4EM	13/18/26W	
Power factor	> 0.9	for EM model: > 0.7	
Output voltage	30-40 V for EM model: 36 V		
Max output current	ASD-LSWP01-13NCC-PC	0.31 A	
	ASD-LSWP01-18NCC-PC	0.42 A	
	ASD-LSWP01-26NCC-PC	0.63 A	
	ASD-LSWP01-A26AC-PC-4EM	0.73 A	
Surge protection DM/CM	2.5 kV / 2.5 kV		
Dimming compatible controls *			
Brand	Lutron		Leviton
	DVSTV-WH	DVSTV-LA	DVTV-WH
Models	DVSTV-GR	DVSTV-BL	DVSTV-IV
	DVSTV-BR	DVSTV-AL	
			AWSMT-7DW
			DS 710-10Z
Regular and voluntary certifications			
5-year limited warranty			
UL certified E473804 (except EM model)			
cETLus certified 5002143 (for EM model)			

* The list of dimmers is only relevant for model with a battery back-up.

PACKAGE CONTENTS:

Description	Q-ty
LED Security Wallpack with photocell	1
EVA gasket (A)	1
Screw 0.8 inch (B)	2
Self-taping screw (C)	2
Screw 0.4 inch (D)	2
Wire nut (E)	3
Rubber cap (F)	1
Anchor (G)	2
Box	1



BUILT-IN BATTERY BACK-UP INFORMATION

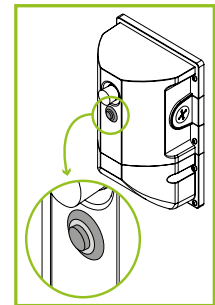
Specifications	
Input voltage	100-277 V 50/60 Hz
Voltage	6.4 V
Power	4W
Lumens	400 lm
Emergency operation time	90 min
Input current	50 mA
Output current	75 mA
Charging time	24 hours
Battery	LiFePO4 - 6.5 V / 1600 mAh
Indicator light	Illuminated test switch, indicator light

STANDARD OPERATION DISPLAY STATUS:

Indicator light modes: If the indicator light is ON, then the battery is connected. If it is OFF then it is not connected.

Test button operation: The test button is an open switch. When pressed, it connects, and released, it cuts off automatically. When doing daily maintenance, if you press the test button, the emergency driver goes into emergency mode, if you release the button, the emergency driver will go back to normal mode.

Test switch	Emergency mode	Charging
OFF	OFF	ON



BUILT-IN PHOTOCELL INFORMATION

LSWP01:

- The light is always ON when luminance is 5 lux (0.5 fc) - 15 lux (1.4 fc)
- The light is always OFF when luminance is 20 lux (1.9 fc) - 60 lux (5.6 fc)

LSWP01-EM:

- The light is always ON when luminance is 10 lux (0.9 fc) - 30 lux (2.8 fc)
- The light is always OFF when luminance is 40 lux (3.7 fc) - 90 lux (8.3 fc)

* To disable photocell function, simply put the rubber cap on it (included).

For most up-to-date spec sheets please refer to asd-lighting.com



LED SECURITY WALLPACK WITH PHOTOCELL

INSTALLATION GUIDE

IMPORTANT SAFETY INFORMATION:

Please read all the instructions below before installation.

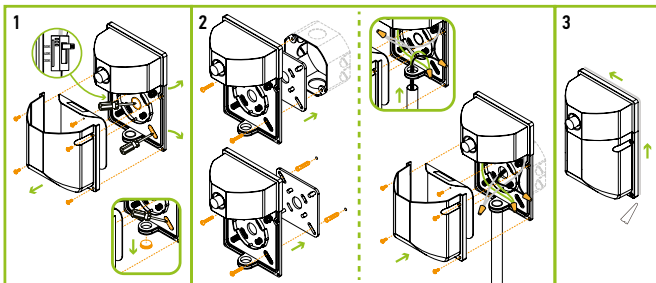
- ▶ Make sure that the supply voltage corresponds to the rated product voltage.
- ▶ The product must be installed by a qualified electrician in accordance with the National Electrical Code and corresponding local codes.
- ▶ If the product is damaged, do not use it.

⚠ WARNING

RISK OF PERSONAL INJURY – READ and follow all WARNINGS and installation instructions. Keep or give to the owner for future reference.
Risk of cuts: Wear gloves to prevent cuts or abrasions when removing from carton, handling, installing, and maintaining this product.
Risk of electric shock: This product must be installed in accordance with the applicable installation code by a person familiar with the construction and operation of the product and the hazards involved.
Risk of Fire: Minimum 194°F supply conductors. Consult a qualified electrician to ensure correct branch circuit conductor.
 ASD® assumes no responsibility for claims arising out of improper or careless installation or handling of this product.

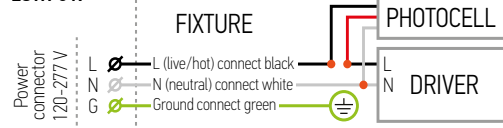
INSTALLATION STEPS:

1. Loosen the screws on each side of the fixture and remove the back plate. Also remove the reflector by loosening two screws. Slide the switch to adjust the color temperature to the desired output. Knock out two screw holes on the back plate. Take out the threaded plug from the bottom of the plate for surface installation or plug in the middle of the back plate for outlet box installation.
2. **For surface installation** drill two appropriately sized holes for anchors, insert anchors into the holes for surface installation. Attach the supplied foam mounting pad between the wall and plate for water-resistance before securing the plate. Attach the back plate by twisting the two self-tapping screws into the anchors. Insert 1/2 conduit into the fixture and connect Black to Black, White to White, and Green to Green wires.
- For outlet box installation** attach the supplied foam mounting pad between the wall and plate for water-resistance before securing the plate tightly on the wall. Plug the wires from the J-box into the fixture through the center hole, and attach the fixture to the J-box with proper screws. Use the supplied gasket for a weather tight seal. Connect Black to Black, White to White, and Green to Green wires. Install the reflector between the back plate and diffusor. Screw the main fixture body back on the plate.
3. Apply silicone (not included) as shown in the picture.

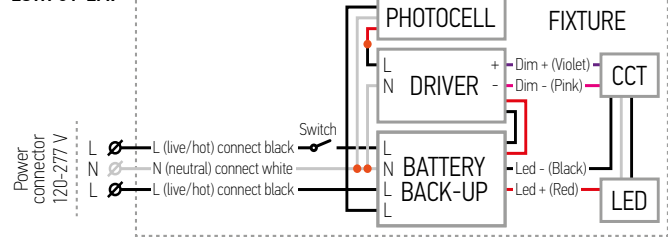


ELECTRICAL SCHEMATIC DIAGRAM:

LSWP01:

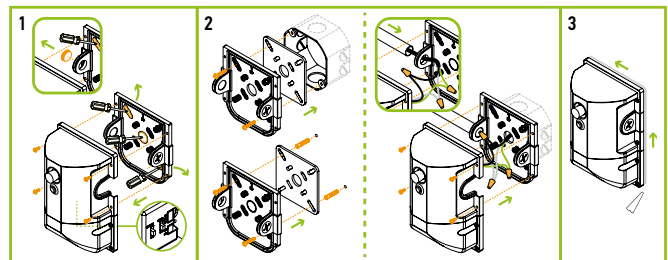


LSWP01-EM:



INSTALLATION BATTERY BACK-UP MODEL:

1. Loosen the screws on each side of the fixture and remove the back plate. Slide the switch to adjust the color temperature and wattage to the desired output. Knock out two screw holes on the back plate. Take out the threaded plug from the bottom of the plate for surface installation or plug in the middle of the back plate for outlet box installation.
2. **For surface installation** drill two appropriately sized holes for anchors, insert anchors into the holes for surface installation. Attach the supplied foam mounting pad between the wall and plate for water-resistance before securing the plate. Attach the back plate by twisting the two self-tapping screws into the anchors. Insert 1/2 conduit into the fixture and connect Black to Black, White to White, and Green to Green wires.
- For outlet box installation** attach the supplied foam mounting pad between the wall and plate for water-resistance before securing the plate tightly on the wall. Plug the wires from the J-box into the fixture through the center hole, and attach the fixture to the J-box with proper screws. Use the supplied gasket for a weather tight seal. Connect Black to Black, White to White, and Green to Green wires. Screw the main fixture body back on the plate.
3. Apply silicone (not included) as shown in the picture.



ORDERING INFORMATION

Model	UPC	Pcs per carton	Carton size	Carton weight	GTIN 14
LSWP01					
ASD-LSWP01-13NCC-PC	810050733694	8	15.6" x 12" x 9.1"	13.6 lbs	30810050733695
ASD-LSWP01-18NCC-PC	810050734110	8	15.6" x 12" x 9.1"	13.6 lbs	30810050734111
ASD-LSWP01-26NCC-PC	810050734806	8	15.6" x 12" x 9.1"	13.6 lbs	30810050734807
LSWP01-EM WITH BATTERY BACK-UP					
ASD-LSWP01-A26AC-PC-4EM	810128114462	8	17.7" x 12" x 9.1"	25.8 lbs	10810128114469

For most up-to-date spec sheets please refer to asd-lighting.com

ASD LIGHTING CORP

E-mail: orders@asd-lighting.com | Web site: www.asd-lighting.com

