



LED TRADITIONAL WALLPACK

► **DESIGN & OPTIONS** - LED TRADITIONAL WALLPACK has durable, commercial-grade die-cast aluminum housing, anti-glare glass shield with high temperature resistance, maintenance-free LEDs, and anti-leakage silicone gaskets. Models with a built-in dusk-to-dawn photocell and CCT adjustable options are also available. Photocell will automatically turn the fixture on/off depending on the time of day. The CCT options are 3000K, 4000K or 5000K. This fixture comes with a 120-277V with, 0-10V dimmable driver, 4000K or 5000K color temperature and a BRONZE finish.

► **INSTALLATION** - The housing features a removable hinge door and multiple points of entry, making installation quick and easy. The fixture can be mounted to a junction box or directly to a wall. Refer to installation instructions for detailed steps.

► **APPLICATION** - These fixtures can operate in temperatures between -40°+122°F (-40°+50°C), allowing them to be utilized in a wide variety of applications and climates. This makes them perfect for outdoor security lighting, wall perimeter lighting, garages, large backyards, commercial loading bays, warehouses, apartment complexes, hotels, and office/retail complexes.

► **ENERGY SAVING & EFFICIENCY** - This fixture provides a lumen output equal to MH/HPS and can cut your electric bill by up to 80% instantly. With a lifespan of 72,000 hours, these fixtures are made to last decades under normal operation! This fixture will save you a significant amount of money in its lifetime.

► **CERTIFICATION & WARRANTY** - Buy with confidence: ASD provides a 5-year warranty along with UL and DLC Premium certifications to guarantee top quality products and safety!

Top US certifications allow participation in rebates; please check the rebate programs available in your state.

Catalog number	
Notes	
Type	



OPTION



OPTION

PRODUCT LEGEND:

Family	Modification	Watts		Dimmable	CCT	Option	Series
ASD-WLP	01	XX		X	XX	XX	XXX
LED Traditional Wallpack	01S = Small body	30 = 30 W	80 = 80 W	D = Dimmable	40 = 4,000 K	PC = Photocell	Blank = Premium
		50 = 50 W	120 = 120 W		50 = 5,000 K		PRM = Premium
					AC = 3,000/4,000/5,000 K		

LED TRADITIONAL WALLPACK:

Model	Watts	Voltage	Dimmable	Lumens	CCT	Option	Dimensions (LxWxH)
ASD-WLP01-50D50	50 W	120-277 V	0-10 V	7,878 lm	5,000 K	-	14 1/4" x 9 5/16" x 7 9/16"
ASD-WLP01-80D50	80 W	120-277 V	0-10 V	11,874 lm	5,000 K	-	14 1/4" x 9 5/16" x 7 9/16"
ASD-WLP01-120D50	120 W	120-277 V	0-10 V	17,443 lm	5,000 K	-	14 1/4" x 9 5/16" x 7 9/16"
ASD-WLP01-50D40-PC-PRM	50 W	120-277 V	0-10 V	7,818 lm	4,000 K	Photocell	14 1/4" x 9 5/16" x 7 9/16"
ASD-WLP01-50D50-PC-PRM	50 W	120-277 V	0-10 V	7,878 lm	5,000 K	Photocell	14 1/4" x 9 5/16" x 7 9/16"
ASD-WLP01-80D40-PC-PRM	80 W	120-277 V	0-10 V	11,858 lm	4,000 K	Photocell	14 1/4" x 9 5/16" x 7 9/16"
ASD-WLP01-80D50-PC-PRM	80 W	120-277 V	0-10 V	11,874 lm	5,000 K	Photocell	14 1/4" x 9 5/16" x 7 9/16"
ASD-WLP01-120D50-PC-PRM	120 W	120-277 V	0-10 V	17,443 lm	5,000 K	Photocell	14 1/4" x 9 5/16" x 7 9/16"
ASD-WLP01S-30DAC	30 W	120-277 V	1-10 V	4,573/4,890/4,834 lm	3,000/4,000/5,000 K	-	10 1/4" x 9 1/2" x 7 1/2"
ASD-WLP01-50DAC	50 W	120-277 V	1-10 V	7,511/7,719/7,773 lm	3,000/4,000/5,000 K	-	14 1/4" x 9 5/16" x 7 9/16"
ASD-WLP01-80DAC	80 W	120-277 V	1-10 V	11,807/12,174/11,956 lm	3,000/4,000/5,000 K	-	14 1/4" x 9 5/16" x 7 9/16"
ASD-WLP01-120DAC	120 W	120-277 V	1-10 V	16,953/17,703/17,633 lm	3,000/4,000/5,000 K	-	14 1/4" x 9 5/16" x 7 9/16"

For most up-to-date spec sheets please refer to asd-lighting.com

ASD LIGHTING CORP

E-mail: orders@asd-lighting.com | Web site: www.asd-lighting.com





LED TRADITIONAL WALLPACK

PRODUCT SPECIFICATIONS:

Construction & Materials						
Lens	Glass					
Housing	Die-Cast Aluminum					
Finish	Bronze					
Weight	ASD-WLP01-50D50	7.9 lb (3.6 kg)	ASD-WLP01-50D40-PC-PRM	7.9 lb (3.6 kg)	ASD-WLP01S-30DAC	5.4 lb (2.4 kg)
	ASD-WLP01-80D50	8.2 lb (3.7 kg)	ASD-WLP01-50D50-PC-PRM		ASD-WLP01-50DAC	8 lb (3.7 kg)
	ASD-WLP01-120D50	9.3 lb (4.2 kg)	ASD-WLP01-80D40-PC-PRM	8.2 lb (3.7 kg)	ASD-WLP01-80DAC	8.3 lb (3.8 kg)
			ASD-WLP01-80D50-PC-PRM		ASD-WLP01-120DAC	9.4 lb (4.3 kg)
		ASD-WLP01-120D50-PC-PRM	9.3 lb (4.2 kg)			
Environmental System						
Work Environment	Suitable for Wet Locations, IP65					
Operating Temperature	-40°F to 122°F (-40°C to 50°C)					
L-70 Life	R > 72,000 hrs; C > 145,000 hrs					
Optical System						
Luminous Flux	ASD-WLP01-50D50	7,878 lm	ASD-WLP01-50D40-PC-PRM	7,818 lm	ASD-WLP01S-30DAC	4,573/4,890/4,834 lm
	ASD-WLP01-80D50	11,874 lm	ASD-WLP01-50D50-PC-PRM	7,878 lm	ASD-WLP01-50DAC	7,511/7,719/7,773 lm
	ASD-WLP01-120D50	17,443 lm	ASD-WLP01-80D40-PC-PRM	11,858 lm	ASD-WLP01-80DAC	11,807/12,174/11,956 lm
			ASD-WLP01-80D50-PC-PRM	11,874 lm	ASD-WLP01-120DAC	16,953/17,703/17,633 lm
		ASD-WLP01-120D50-PC-PRM	17,443 lm			
Color Temperature	ASD-WLP01-50D50	5,000 K	ASD-WLP01-50D40-PC-PRM	4,000 K	ASD-WLP01S-30DAC	3,000K/4,000 K/5,000K
	ASD-WLP01-80D50		ASD-WLP01-50D50-PC-PRM	5,000 K	ASD-WLP01-50DAC	
	ASD-WLP01-120D50		ASD-WLP01-80D40-PC-PRM	4,000 K	ASD-WLP01-80DAC	
		ASD-WLP01-80D50-PC-PRM	5,000 K	ASD-WLP01-120DAC		
		ASD-WLP01-120D50-PC-PRM	5,000 K			
CRI	> 70					
Electrical System						
Input Voltage	120-277 V					
Max input current	ASD-WLP01-50D50	0.55 A	ASD-WLP01-50D40-PC-PRM	0.55 A	ASD-WLP01S-30DAC	0.33 A
	ASD-WLP01-80D50	0.8 A	ASD-WLP01-50D50-PC-PRM		ASD-WLP01-50DAC	0.55 A
	ASD-WLP01-120D50	1.05 A	ASD-WLP01-80D40-PC-PRM	0.8 A	ASD-WLP01-80DAC	0.8 A
			ASD-WLP01-80D50-PC-PRM		ASD-WLP01-120DAC	1.2 A
		ASD-WLP01-120D50-PC-PRM	1.05 A			
Inrush current (Action time)	80 A (0.75 S)					
AC input range	min 108V max 305V					
Off State Power	0 W					
Power Consumption	ASD-WLP01-50D50	50 W	ASD-WLP01-50D40-PC-PRM	50 W	ASD-WLP01S-30DAC	30 W
	ASD-WLP01-80D50	80 W	ASD-WLP01-50D50-PC-PRM		ASD-WLP01-50DAC	50 W
	ASD-WLP01-120D50	120 W	ASD-WLP01-80D40-PC-PRM	80 W	ASD-WLP01-80DAC	80 W
			ASD-WLP01-80D50-PC-PRM		ASD-WLP01-120DAC	120 W
		ASD-WLP01-120D50-PC-PRM	120 W			
Power Factor	> 0.9					
Output voltage	ASD-WLP01-50D50	130 V	ASD-WLP01-50D40-PC-PRM	130 V	ASD-WLP01S-30DAC	110-130 V
	ASD-WLP01-80D50		ASD-WLP01-50D50-PC-PRM		ASD-WLP01-50DAC	
	ASD-WLP01-120D50		ASD-WLP01-80D40-PC-PRM		ASD-WLP01-80DAC	
		ASD-WLP01-80D50-PC-PRM	ASD-WLP01-120DAC			
		ASD-WLP01-120D50-PC-PRM				
Max output current	ASD-WLP01-50D50	390 mA	ASD-WLP01-50D40-PC-PRM	390 mA	ASD-WLP01S-30DAC	230 mA
	ASD-WLP01-80D50	620 mA	ASD-WLP01-50D50-PC-PRM		ASD-WLP01-50DAC	390 mA
	ASD-WLP01-120D50	920 mA	ASD-WLP01-80D40-PC-PRM	620 mA	ASD-WLP01-80DAC	620 mA
			ASD-WLP01-80D50-PC-PRM		ASD-WLP01-120DAC	920 mA
		ASD-WLP01-120D50-PC-PRM	920 mA			
Surge protection	4 kV					
LED Driver Class	ASD-WLP01-50D50	Class 1	ASD-WLP01-50D40-PC-PRM	Class 1	ASD-WLP01S-30DAC	Non-Isolated Class P
	ASD-WLP01-80D50		ASD-WLP01-50D50-PC-PRM		ASD-WLP01-50DAC	
	ASD-WLP01-120D50		ASD-WLP01-80D40-PC-PRM		ASD-WLP01-80DAC	
		ASD-WLP01-80D50-PC-PRM	ASD-WLP01-120DAC			
		ASD-WLP01-120D50-PC-PRM				
Dimming compatible controls						
Brand	Maxxima	Eaton	Keygma	Leviton	Lutron	
Models	MEW-DM600LV	DF10P-C1	KGM-1A010V	IP710-DLZ	DVSTV-WH	
Warranty & Certifications						
5-year limited warranty						
cULus certified E473804						
DesignLights Consortium (DLC) listed (Classification: Premium) Main: Outdoor Luminaires; General Application: Mid/High Output; Primary Use: Outdoor Non-Cutoff and Semi-Cutoff Wall-Mounted Area Luminaires						

For most up-to-date spec sheets please refer to asd-lighting.com



LED TRADITIONAL WALLPACK

INSTALLATION GUIDE

IMPORTANT SAFETY INFORMATION:

Please read all the instructions below before installation.

- ▶ Make sure that the supply voltage corresponds to the rated product voltage.
- ▶ The product must be installed by a qualified electrician in accordance with the National Electrical Code and corresponding local codes.
- ▶ If the product is damaged, do not use it.

⚠ WARNING

RISK OF PERSONAL INJURY – READ and follow all WARNINGS and installation instructions.

Keep or give to the owner for future reference.

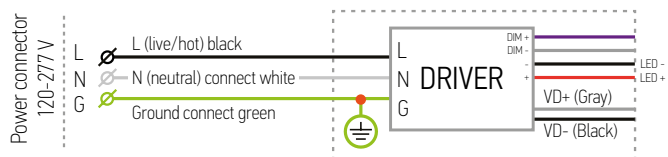
Risk of cuts: Wear gloves to prevent cuts or abrasions when removing from carton, handling, installing, and maintaining this product.

Risk of electric shock: This product must be installed in accordance with the applicable installation code by a person familiar with the construction and operation of the product and the hazards involved.

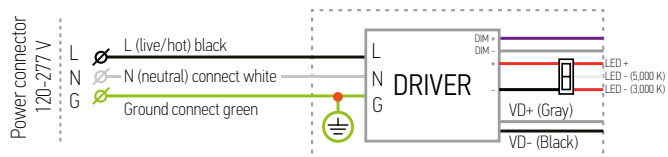
Risk of Fire: Minimum 194°F supply conductors. Consult a qualified electrician to ensure correct branch circuit conductor.

ASD® assumes no responsibility for claims arising out of improper or careless installation or handling of this product.

ELECTRICAL SCHEMATIC DIAGRAM:

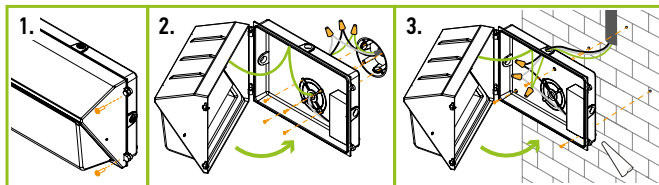


For CCT Models



INSTALLATION STEPS:

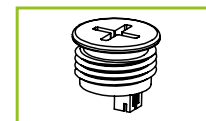
1. Use a screwdriver to loosen the screws securing the front cover and open the fixture.
2. **Junction box installation:** Drill the mounting holes and secure the fixture on the mounting surface, insert the power cord. Connect the wires: Black to Black, White to White, Green to Green. Close the front cover and tighten the screws.
3. **Wall installation:** Secure the fixture on the wall and remove one of the side caps, insert the power cord. Connect the wires: Black to Black, White to White, Green to Green. Close the front cover and tighten the screws. For outdoor locations it is recommended to use silicone (not included).



PACKAGE CONTENTS:

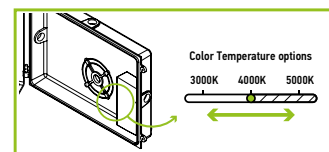
Description	Q-ty
LED Traditional Wallpack	1
Box	1
Cut sheet	2

ACCESSORIES:



COLOR TEMPERATURE SETTINGS FOR CCT MODELS:

Choose needed color temperature by adjusting the switch.



PHOTOCELL SETTINGS:

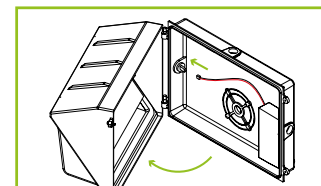


The built-in dusk-to-dawn photocell automatically turns the fixture off during daylight hours.

- The light is always ON when luminance is < 30 Lx (2.8 Fc) (night time)
- The light is always OFF when luminance is < 60 Lx (5.6 Fc) (day time)

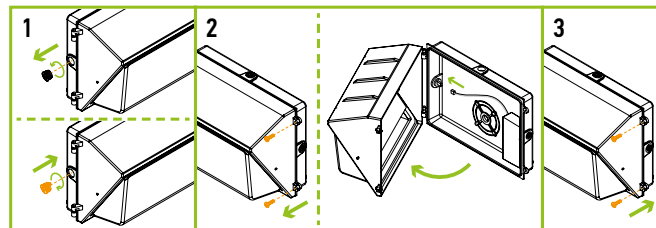
ENABLING THE PHOTOCELL:

By default ASD-WLP01-PC models come with the photocell disconnected. If the photocell is needed for your application plug the quick connect from the driver into the photocell before wiring to AC power.



INSTALLATION PHOTOCELL ASD-PC-WLP sold separately:

1. Screw off upper knockout on the top the fixture. Screw in the Photocell to the knockout hole.
2. Unscrew two screws in the side of the fixture, open the fixture, insert connector on black-grey wire to the photocell.
3. Close the fixture and tighten two screws back.



For most up-to-date spec sheets please refer to asd-lighting.com



LED TRADITIONAL WALLPACK

ORDERING INFORMATION

LED TRADITIONAL WALLPACK:

Model	Carton Size	Carton Weight	UPC
ASD-WLP01-50D50	16.5" x 10.8" x 9.4"	9.9 lb	810050735742
ASD-WLP01-80D50	16.5" x 10.8" x 9.4"	10.1 lb	810050735759
ASD-WLP01-120D50	16.5" x 10.8" x 9.4"	11.2 lb	810050735766
ASD-WLP01-50D40-PC-PRM	16.5" x 10.8" x 9.4"	9.9 lb	810050733380
ASD-WLP01-50D50-PC-PRM	16.5" x 10.8" x 9.4"	9.9 lb	810050733397
ASD-WLP01-80D40-PC-PRM	16.5" x 10.8" x 9.4"	10.1 lb	810050733403
ASD-WLP01-80D50-PC-PRM	16.5" x 10.8" x 9.4"	10.1 lb	810050733410
ASD-WLP01-120D50-PC-PRM	16.5" x 10.8" x 9.4"	11.2 lb	810050733649
ASD-WLP01S-30DAC	11.7" x 12.3" x 9.5"	6.8 lb	810050735803
ASD-WLP01-50DAC	16.5" x 10.8" x 9.4"	10 lb	810050735810
ASD-WLP01-80DAC	16.5" x 10.8" x 9.4"	10.3 lb	810050735827
ASD-WLP01-120DAC	16.5" x 10.8" x 9.4"	11.4 lb	810050735834

ACCESSORIES:

Model	Name	Finish	Materials	Weight	Dimensions	UPC
ASD-PC-WLP	Photocell for LED Wallpack WLP01 WLP03	Clear	Plastic	0.009 lb	7/8" x 7/8" x 3/4"	810050735773

Model	Pcs in middle box	Middle box Size	Middle box Weight	GTIN 14 for Middle box	Pcs. per Carton	Carton Size	Carton Weight	GTIN 14 in Carton
ASD-PC-WLP	100	5.1" x 4.1" x 10.2"	1.1 lb	10810050735770	1200	13" x 10.7" x 13.3"	13.2 lb	20810050735777

For most up-to-date spec sheets please refer to asd-lighting.com