



# LED SEAMLESS VAPOR PROOF FIXTURE

## Premium Series

► **DESIGN & OPTIONS** - LED SEAMLESS VAPOR PROOF LIGHT has a waterproof polycarbonate body with a frosted lens, making this fixture impact resistant and able to maintain its luster over time. Multiple fixtures can be linked with vapor-tight strain relief connectors. The fixture is equipped with a 0-10V dimmable driver and comes with a 120-277V, 4000K or 5000K color temperature, and in two sizes: 4ft and 8ft.

► **INSTALLATION** - Two side entry points on the fixture make it easy to connect multiple fixtures to one switch. It can be surface or pendant mounted. Refer to install instructions for detailed steps.

► **APPLICATION** - These LED SEAMLESS VAPOR PROOF LIGHTS are the perfect choice for wet and dusty locations. Common applications include: parking garages, carports, cold freezers, stairwells, tunnels, car washes, patios, barns, canopies and locker rooms. This fixture is Wet location rated with IP66 ingress protection rating. It can be operated in temperatures between -4+104°F (-20+40°C), allowing it to be utilized in a wide variety of applications and climates.

► **ENERGY SAVINGS & EFFICIENCY** - This fixture provides a lumen output equal to or higher than fluorescent fixtures and can cut your electric bill by up to 80% instantly. With a lifespan of 54,000 hours, these fixtures are made to last decades under normal operation! This fixture will save you a significant amount of money in its lifetime.

► **CERTIFICATION & WARRANTY** - Buy with confidence: ASD provides a 5-year warranty along with UL and DLC Premium certifications to guarantee top quality products and safety!

Top US certifications allow participation in rebates; please check the rebate programs available in your state.

Catalog number	
Notes	
Type	



## PRODUCT LEGEND:

Family	Modification	Lens	Size	Dimmable	Watts	CCT	Series
ASD-LVP	2S	M	X	X	XX	XX	XXX
LED Seamless Vapor Proof fixture		Translucent white lens	4 = 4 ft 8 = 8 ft	D = Dimmable	31 = 31 W 60 = 60 W	40 = 4,000 K 50 = 5,000 K	PRM = Premium

## LED SEAMLESS VAPOR PROOF FIXTURE:

Model	Type	Watts	Voltage	Dimmable	CCT	Lumens	Dimensions (LxWxH)
ASD-LVP2SM-4D3140PRM	4 ft	31 W	120-277 V	0-10 V	4,000 K	3,968 lm	48" x 3 1/2" x 3 1/8"
ASD-LVP2SM-4D3150PRM	4 ft	31 W	120-277 V	0-10 V	5,000 K	3,999 lm	48" x 3 1/2" x 3 1/8"
ASD-LVP2SM-8D6040PRM	8 ft	60 W	120-277 V	0-10 V	4,000 K	7,980 lm	94 1/2" x 3 1/2" x 3 1/8"
ASD-LVP2SM-8D6050PRM	8 ft	60 W	120-277 V	0-10 V	5,000 K	8,040 lm	94 1/2" x 3 1/2" x 3 1/8"

## ORDERING INFORMATION:

Model	UPC	Pcs. per Carton	Carton Size	Carton Weight	GTIN 14
ASD-LVP2SM-4D3140PRM	857622006497	9	51" x 12" x 11"	49 lb	10857622006494
ASD-LVP2SM-4D3150PRM	857622006503	9	51" x 12" x 11"	49 lb	10857622006500
ASD-LVP2SM-8D6040PRM	857622006527	4	98" x 8.3" x 7.5"	34.9 lb	10857622006524
ASD-LVP2SM-8D6050PRM	857622006534	4	98" x 8.3" x 7.5"	34.9 lb	10857622006531

For most up-to-date spec sheets please refer to [asd-lighting.com](http://asd-lighting.com)

ASD LIGHTING CORP

E-mail: [orders@asd-lighting.com](mailto:orders@asd-lighting.com) | Web site: [www.asd-lighting.com](http://www.asd-lighting.com)





# LED SEAMLESS VAPOR PROOF FIXTURE

Premium Series

## PRODUCT SPECIFICATIONS:

Construction & Materials			
Lens	Translucent white lens		
Housing	Polycarbonate white lens		
Finish Color	White		
Weight	ASD-LVP2SM-4D3140PRM	4.6 lb (2.1 kg)	
	ASD-LVP2SM-4D3150PRM		
	ASD-LVP2SM-8D6040PRM	7 lb (3.2 kg)	
	ASD-LVP2SM-8D6050PRM		
Environmental System			
Work Environment	Suitable for Wet Locations, IP66		
Operating Temperature	-4°F to 104°F (-20°C to 40°C)		
L-70 Life	R > 54,000 hrs; C > 231,000 hrs		
Optical System			
Luminous Flux	ASD-LVP2SM-4D3140PRM	3,968 lm	
	ASD-LVP2SM-4D3150PRM	3,999 lm	
	ASD-LVP2SM-8D6040PRM	7,980 lm	
	ASD-LVP2SM-8D6050PRM	8,040 lm	
Color Temperature	4,000 K; 5,000 K		
CRI	> 80		
Electrical System			
Input Voltage	120-277VAC		
Max input current	ASD-LVP2SM-4D3140PRM	350 mA	
	ASD-LVP2SM-4D3150PRM		
	ASD-LVP2SM-8D6040PRM	700 mA	
	ASD-LVP2SM-8D6050PRM		
Inrush current (Action time)	ASD-LVP2SM-4D3140PRM	35 A (0.7 S)	
	ASD-LVP2SM-4D3150PRM		
	ASD-LVP2SM-8D6040PRM	70 A (0.45 S)	
	ASD-LVP2SM-8D6050PRM		
AC input range	min 90 V max 285 V		
Off State Power	0 W		
Power Consumption	ASD-LVP2SM-4D3140PRM	31 W	
	ASD-LVP2SM-4D3150PRM		
	ASD-LVP2SM-8D6040PRM	60 W	
	ASD-LVP2SM-8D6050PRM		
Power Factor	≥ 0.9		
Output voltage	30-42 V		
Max output current	ASD-LVP2SM-4D3140PRM	700 mA	
	ASD-LVP2SM-4D3150PRM		
	ASD-LVP2SM-8D6040PRM	1.5 A	
	ASD-LVP2SM-8D6050PRM		
LED driver class	B, class 2		
Dimming compatible controls			
Brand	Lutron	Leviton	Cooper
Models	NFTV	IPL710 DLZ	IPL710 DL
			SF10P-W
Regular and Voluntary Certifications			
5-year limited warranty			
DesignLights Consortium (DLC) listed (Classification: Premium)			
Main: Indoor Luminaires; General Application: Troffer;			
Primary Use: Luminaires for Ambient Lighting of Interior Commercial Spaces			
cULus certified	E473804 – luminaire	E473855 – driver	

## PACKAGE CONTENTS:

Description	Q-ty
LED Seamless Vapor Proof Fixture	1
Box	1
Cut sheet	2

## INSTALLATION GUIDE

### IMPORTANT SAFETY INFORMATION:

Please read all the instructions below before installation.

- ▶ Make sure that the supply voltage corresponds to the rated product voltage.
- ▶ The product must be installed by a qualified electrician in accordance with the National Electrical Code and corresponding local codes.
- ▶ If the product is damaged, do not use it.
- ▶ All wiring connections should be capped with UL approved wire connectors.
- ▶ For surface mount there are two stainless steel brackets included.
- ▶ This fixture is intended to be connected to a properly installed and grounded UL listed junction box with suitable strain relief means for power cord. The junction box is not included, should be purchased separately.

### ⚠ WARNING

**RISK OF PERSONAL INJURY – READ and follow all WARNINGS and installation instructions.**

Keep or give to the owner for future reference.

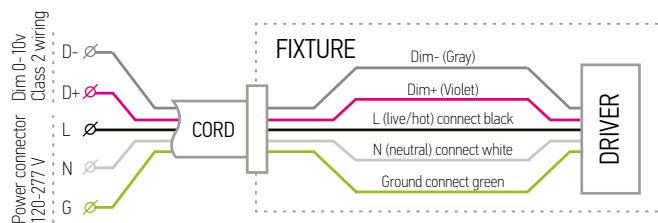
**Risk of cuts:** Wear gloves to prevent cuts or abrasions when removing from carton, handling, installing, and maintaining this product.

**Risk of electric shock:** This product must be installed in accordance with the applicable installation code by a person familiar with the construction and operation of the product and the hazards involved.

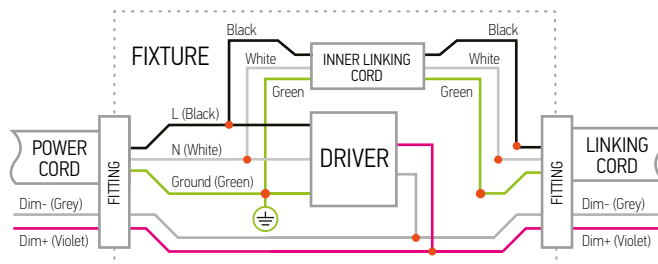
**Risk of Fire:** Minimum 194°F supply conductors. Consult a qualified electrician to ensure correct branch circuit conductor.

ASD® assumes no responsibility for claims arising out of improper or careless installation or handling of this product.

### ELECTRICAL SCHEMATIC DIAGRAM:



### CONNECTION DIAGRAM:



For most up-to-date spec sheets please refer to [asd-lighting.com](http://asd-lighting.com)



# LED SEAMLESS VAPOR PROOF FIXTURE

Premium Series

## INSTALLATION STEPS:

1. Remove four screws of the end-cap, pull out the end-cap with the junction box, remove the cover of the junction box and remove the gasket.

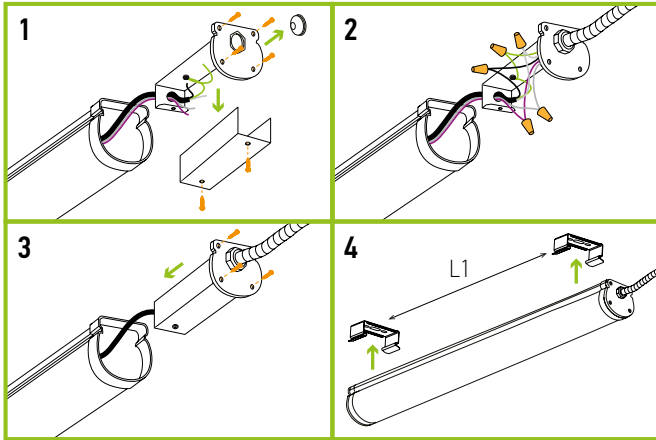
2. Insert the power cord and dimming wires into the junction box, connect lines black to black, white to white, green to green, grey to grey, violet to violet.

**WARNING:** if there is no ground supply wire, stop the installation process, and consult a qualified electrician. Once wire connections are made, secure each with a wire nut (CC).

3. Close the cover of the junction box, insert into the fixture, tighten the screws of the end-cap.

4. Affix the fixture to the ceiling/wall by mounting brackets.

**NOTICE:** Distance between the brackets (L1) should be 90.2" (2,290 mm) ± 1.2" (30 mm)



## CONNECTING MULTIPLE FIXTURES TO ONE SWITCH:

1. Remove four screws of the end-cap, pull out the end-cap with the junction box, remove the cover of the junction box and remove the gasket.

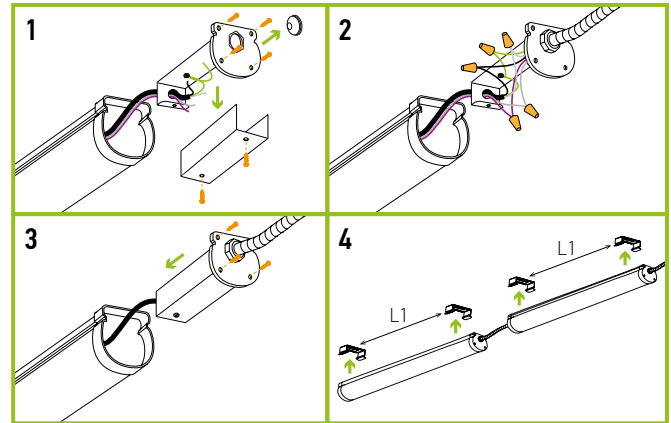
2. Insert the power cord and dimming wires from another fixture into the junction box, connect lines black to black, white to white, green to green, grey to grey, violet to violet.

**WARNING:** if there is no ground supply wire, stop the installation process, and consult a qualified electrician. Once wire connections are made, secure each with a wire nut (CC).

3. Close the cover of the junction box, insert into the fixture, tighten the screws of the end-cap.

4. Affix the fixtures to the ceiling/wall by mounting brackets.

**NOTICE:** Distance between the brackets (L1) should be 90.2" (2,290 mm) ± 1.2" (30 mm)



## LINKING LIMITS:

Model	Linkable Quantities Depending on Voltage		
	110V	200V	277V
4 ft	14 pcs	28 pcs	32 pcs
8 ft	7 pcs	14 pcs	16 pcs

For most up-to-date spec sheets please refer to [asd-lighting.com](http://asd-lighting.com)

ASD LIGHTING CORP

E-mail: [orders@asd-lighting.com](mailto:orders@asd-lighting.com) | Web site: [www.asd-lighting.com](http://www.asd-lighting.com)

