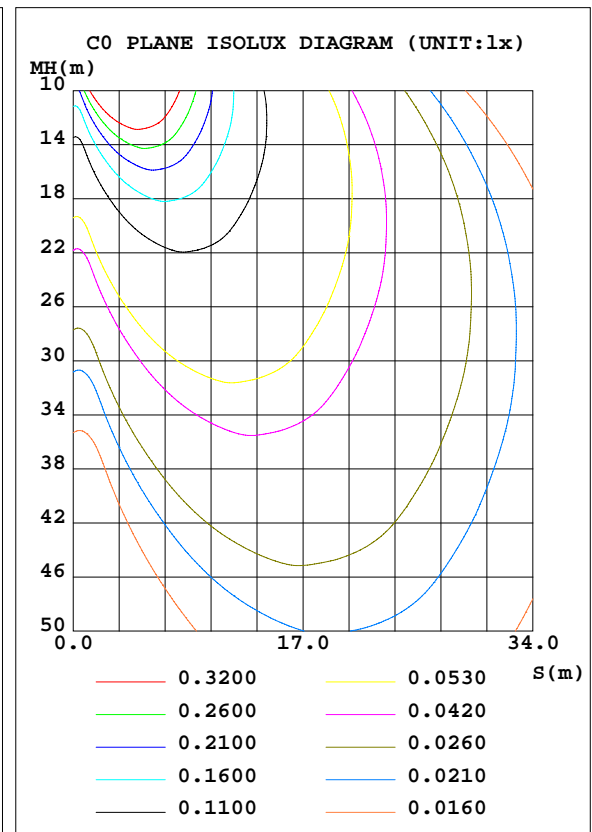
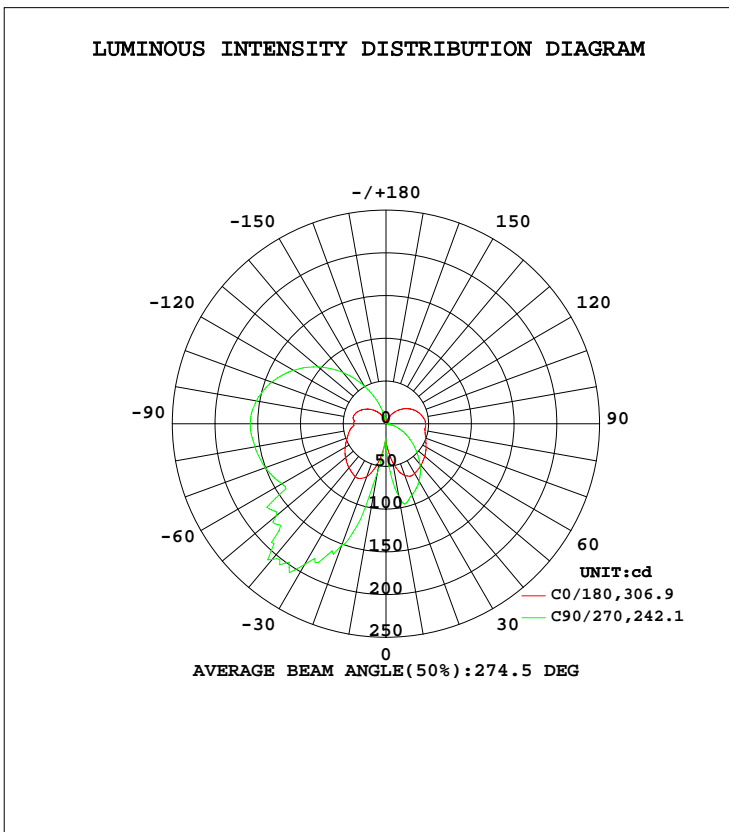


LUMINAIRE PHOTOMETRIC TEST REPORT

Test:U:120.0V I:0.1322A P:15.14W PF:0.9540 Lamp Flux:753.733x1 lm		
NAME: ASD-LWS-11-D15CC-XX 4000K	TYPE:N/A	WEIGHT:N/A
SPEC.:N/A	DIM.: N/A	SERIAL No.:N/A
MFR.: ASD Lighting Corp	SUR.:N/A	Shielding Angle:N/A

DATA OF LAMP		PHOTOMETRIC DATA Eff: 49.78 lm/W			
MODEL	ASD-LWS-11-D15CC-XX	I <sub>max</sub> (cd)	211.0	S/MH(C0/180)	2.73
NOMINAL POWER(W)	15	LOR(%)	100.0	S/MH(C90/270)	2.22
RATED VOLTAGE(V)	120	TOTAL FLUX(lm)	753.73	η UP, DN(C0-180)	32.3,48.0
NOMINAL FLUX(lm)	753.733	CIE CLASS	SEMI-D.	η UP, DN(C180-360)	3.1,16.6
LAMPS INSIDE	1	η up(%)	35.3	CIBSE SHR NOM	0.75
TEST VOLTAGE(V)	120	η down(%)	64.7	CIBSE SHR MAX	0.75



C Range: 0 - 360DEG  
 C Interval: 22.5DEG  
 Test Speed: 10.0deg/s  
 Temperature:24.8DEG  
 Operators:East  
 Test Date:2020-09-09

γ Range: 0 - 180DEG  
 γ Interval: 1.0DEG  
 Test System:EVERFINE GO-R5000\_V2 SYSTEM V2.0.351  
 Humidity:35%  
 Test Distance:2.492m [K=1.0000]  
 Remarks:

ZONAL FLUX DIAGRAM

ZONAL FLUX DIAGRAM:

γ	C0	C45	C90	C135	C180	C225	C270	C315	γ	Φ zone	Φ total	%lum,lamp
10	42.42	43.72	57.96	47.68	45.86	67.98	86.51	71.36	0- 10	4.171	4.171	0.55,0.55
20	65.95	102.0	150.6	109.0	64.24	89.34	88.74	92.55	10- 20	22.75	26.92	3.57,3.57
30	71.67	137.5	190.0	138.4	67.12	76.64	77.62	79.47	20- 30	46.85	73.78	9.79,9.79
40	67.28	157.6	207.3	150.7	63.74	63.43	61.84	66.18	30- 40	66.67	140.4	18.6,18.6
50	61.77	139.3	167.6	144.4	59.26	47.24	44.71	49.49	40- 50	74.51	215.0	28.5,28.5
60	55.31	117.0	140.6	115.8	54.12	30.53	29.33	32.26	50- 60	72.11	287.1	38.1,38.1
70	48.37	109.8	150.3	114.3	49.39	15.90	15.83	17.26	60- 70	67.18	354.3	47,47
80	42.84	112.3	155.7	117.3	46.42	5.161	6.163	5.877	70- 80	66.75	421.0	55.9,55.9
90	38.55	113.9	158.8	119.3	46.38	2.710	3.952	2.117	80- 90	66.33	487.3	64.7,64.7
100	39.17	110.5	154.1	115.4	44.12	2.520	3.882	2.150	90-100	65.62	553.0	73.4,73.4
110	37.35	102.1	142.4	106.1	39.95	2.164	3.618	2.010	100-110	60.15	613.1	81.3,81.3
120	32.69	89.71	125.2	93.01	34.29	1.711	3.303	1.774	110-120	50.74	663.8	88.1,88.1
130	26.74	73.96	103.4	76.47	27.40	1.302	2.877	1.468	120-130	39.08	702.9	93.3,93.3
140	19.97	55.57	78.28	57.09	19.86	0.9829	2.240	1.064	130-140	26.77	729.7	96.8,96.8
150	13.13	36.71	50.97	36.96	12.30	0.9874	1.591	0.6769	140-150	15.44	745.1	98.9,98.9
160	6.643	18.72	25.61	18.19	5.455	1.024	0.9564	0.6483	150-160	6.815	751.9	99.8,99.8
170	1.571	4.060	5.111	3.177	0.7837	0.3439	0.5323	0.5428	160-170	1.697	753.6	100,100
180	0.3778	0.2837	0.2021	0.2732	0.3606	0.3423	0.2447	0.2307	170-180	0.0858	753.7	100,100
DEG	LUMINOUS INTENSITY:cd Less than 25% Percent = 25.6 %								UNIT:lm			

Conical surface Flux(90deg): 177.48 lm

%lum = 23.5%  
%lamp = 23.5%

Conical surface Flux(120deg): 287.07 lm

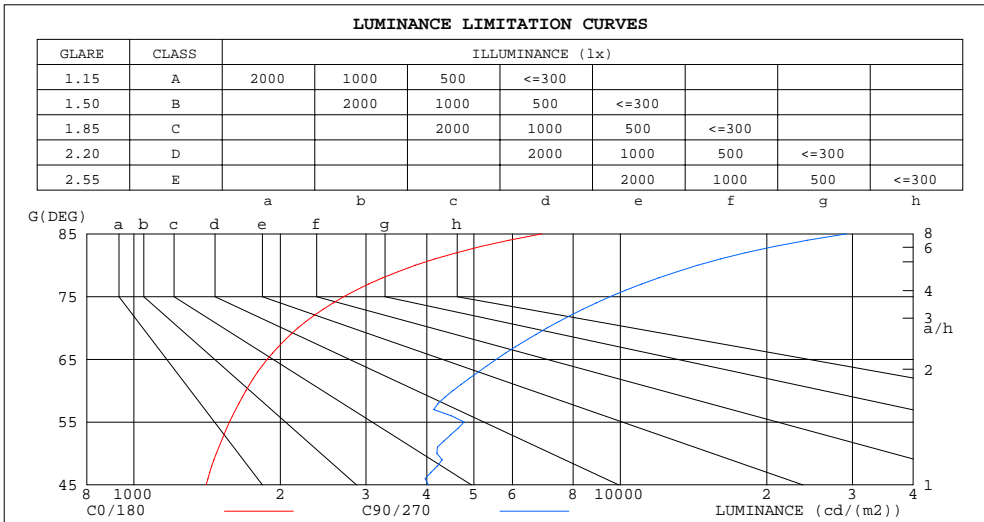
%lum = 38.1%  
%lamp = 38.1%

C Range: 0 - 360DEG  
C Interval: 22.5DEG  
Test Speed: 10.0deg/s  
Temperature:24.8DEG  
Operators:East  
Test Date:2020-09-09

γ Range: 0 - 180DEG  
γ Interval: 1.0DEG  
Test System:EVERFINE GO-R5000\_V2 SYSTEM V2.0.351  
Humidity:35%  
Test Distance:2.492m [K=1.0000]  
Remarks:

LUMINANCE LIMITATION CURVES

Test:U:120.0V I:0.1322A P:15.14W PF:0.9540 Lamp Flux:753.733x1 lm		
NAME: ASD-LWS-11-D15CC-XX 4000K	TYPE:N/A	WEIGHT:N/A
SPEC.:N/A	DIM.: N/A	SERIAL No.:N/A
MFR.: ASD Lighting Corp	SUR.:N/A	Shielding Angle:N/A



LUMINANCE cd/(m2)		
G (DEG)	C0/180	C90/270
85	6899	29182
80	3792	14429
75	2702	9533
70	2174	7070
65	1880	5558
60	1700	4526
55	1572	4772
50	1477	4196
45	1408	4028

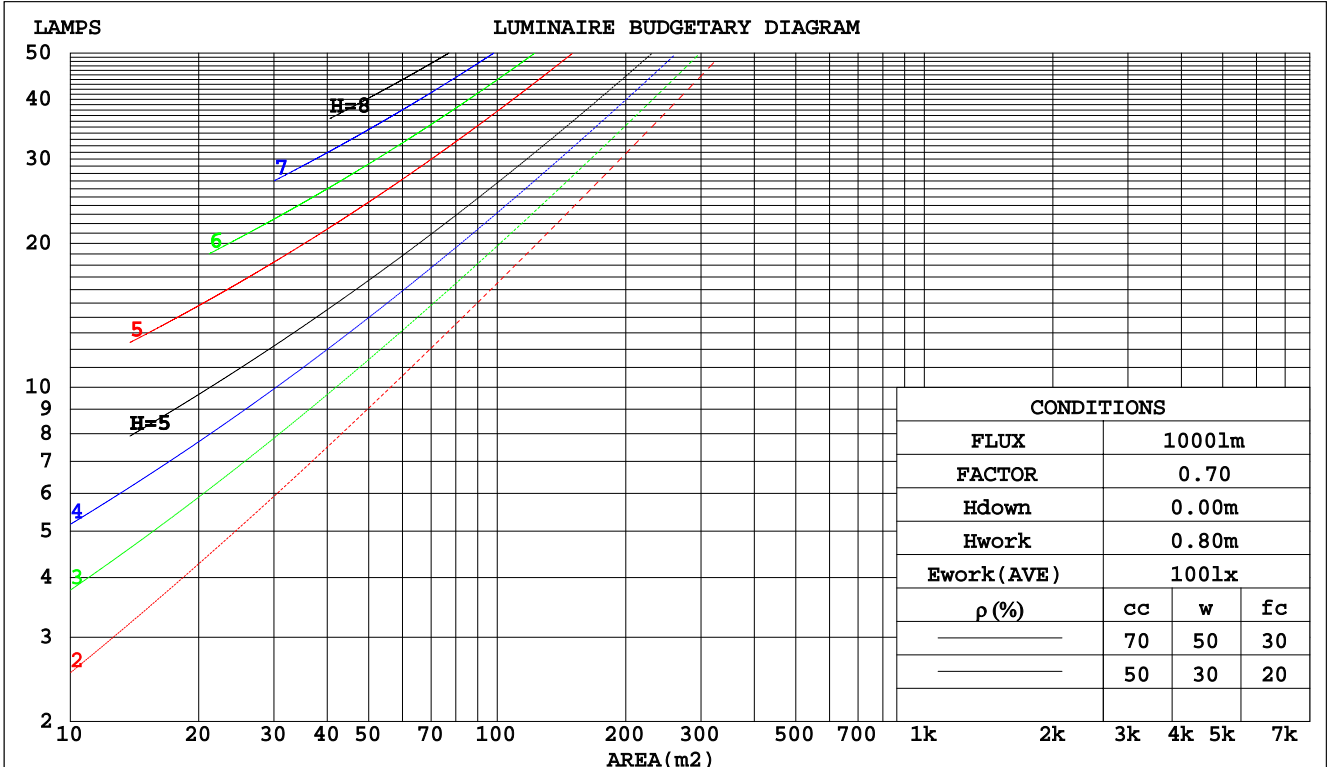
C Range: 0 - 360DEG  
 C Interval: 22.5DEG  
 Test Speed: 10.0deg/s  
 Temperature:24.8DEG  
 Operators:East  
 Test Date:2020-09-09

$\gamma$  Range: 0 - 180DEG  
 $\gamma$  Interval: 1.0DEG  
 Test System:EVERFINE GO-R5000\_V2 SYSTEM V2.0.351  
 Humidity:35%  
 Test Distance:2.492m [K=1.0000]  
 Remarks:

CU AND LUMINAIRE BUDGETARY ESTIMATE DIAGRAM

Test:U:120.0V I:0.1322A P:15.14W PF:0.9540 Lamp Flux:753.733x1 lm		
NAME: ASD-LWS-11-D15CC-XX 4000K	TYPE:N/A	WEIGHT:N/A
SPEC.:N/A	DIM.: N/A	SERIAL No.:N/A
MFR.: ASD Lighting Corp	SUR.:N/A	Shielding Angle:N/A

pcc	80%			70%			50%			30%			10%			0
	50%	30%	10%	50%	30%	10%	50%	30%	10%	50%	30%	10%	50%	30%	10%	0
pw																
pfc	20%			20%			20%			20%			20%			0
RCR	RCR:Room Cavity Ratio						Coefficients of Utilization(CU)									
0.0	1.11	1.11	1.11	1.04	1.04	1.04	.91	.91	.91	.80	.80	.80	.70	.70	.70	.65
1.0	.91	.85	.80	.85	.80	.76	.74	.70	.67	.64	.61	.58	.55	.53	.51	.46
2.0	.77	.69	.63	.72	.65	.59	.63	.57	.52	.54	.50	.46	.46	.43	.40	.36
3.0	.67	.58	.50	.62	.54	.48	.54	.48	.42	.47	.42	.37	.40	.36	.32	.28
4.0	.58	.49	.42	.54	.46	.39	.47	.41	.35	.41	.35	.31	.35	.30	.27	.23
5.0	.51	.42	.35	.48	.40	.33	.42	.35	.30	.36	.31	.26	.31	.26	.23	.19
6.0	.46	.36	.30	.43	.34	.28	.37	.30	.25	.32	.27	.22	.28	.23	.19	.16
7.0	.41	.32	.26	.38	.30	.24	.34	.27	.22	.29	.24	.19	.25	.20	.17	.14
8.0	.37	.28	.22	.35	.27	.21	.31	.24	.19	.27	.21	.17	.23	.18	.15	.12
9.0	.34	.25	.20	.32	.24	.19	.28	.21	.17	.24	.19	.15	.21	.16	.13	.11
10.0	.31	.23	.17	.29	.22	.17	.25	.19	.15	.22	.17	.13	.19	.15	.12	.10



C Range: 0 - 360DEG  
 C Interval: 22.5DEG  
 Test Speed: 10.0deg/s  
 Temperature:24.8DEG  
 Operators:East  
 Test Date:2020-09-09

γ Range: 0 - 180DEG  
 γ Interval: 1.0DEG  
 Test System:EVERFINE GO-R5000\_V2 SYSTEM V2.0.351  
 Humidity:35%  
 Test Distance:2.492m [K=1.0000]  
 Remarks:

WEC AND CCEC

Test:U:120.0V I:0.1322A P:15.14W PF:0.9540 Lamp Flux:753.733x1 lm		
NAME: ASD-LWS-11-D15CC-XX 4000K	TYPE:N/A	WEIGHT:N/A
SPEC.:N/A	DIM.: N/A	SERIAL No.:N/A
MFR.: ASD Lighting Corp	SUR.:N/A	Shielding Angle:N/A

ρcc	80%			70%			50%			30%			10%			0
ρw	50%	30%	10%	50%	30%	10%	50%	30%	10%	50%	30%	10%	50%	30%	10%	0
ρfc	20%			20%			20%			20%			20%			0
RCR	RCR:Room Cavity Ratio						Wall Exitance Coefficients(WEC)									
0.0																
1.0	.398	.226	.072	.380	.217	.069	.346	.199	.063	.315	.182	.058	.287	.166	.054	
2.0	.337	.185	.057	.321	.177	.054	.290	.161	.050	.262	.147	.046	.236	.133	.042	
3.0	.297	.158	.047	.282	.151	.045	.254	.137	.042	.228	.125	.038	.204	.113	.035	
4.0	.266	.138	.041	.252	.132	.039	.227	.120	.036	.203	.109	.033	.181	.098	.030	
5.0	.241	.123	.036	.228	.117	.034	.205	.107	.031	.183	.097	.029	.163	.087	.026	
6.0	.220	.110	.032	.209	.106	.030	.187	.096	.028	.167	.087	.026	.148	.078	.023	
7.0	.203	.100	.028	.193	.096	.027	.173	.087	.025	.154	.079	.023	.137	.071	.021	
8.0	.188	.092	.026	.178	.088	.025	.160	.080	.023	.143	.072	.021	.127	.065	.019	
9.0	.175	.085	.024	.166	.081	.023	.149	.074	.021	.133	.067	.019	.118	.060	.017	
10.0	.164	.079	.022	.156	.075	.021	.140	.068	.019	.125	.062	.018	.110	.056	.016	

ρcc	80%			70%			50%			30%			10%			0
ρw	50%	30%	10%	50%	30%	10%	50%	30%	10%	50%	30%	10%	50%	30%	10%	0
ρfc	20%			20%			20%			20%			20%			0
RCR	RCR:Room Cavity Ratio						Ceiling Cavity Exitance Coefficients(CCEC)									
0.0	.460	.460	.460	.393	.393	.393	.268	.268	.268	.154	.154	.154	.049	.049	.049	
1.0	.458	.427	.399	.392	.366	.343	.268	.252	.237	.154	.146	.138	.049	.047	.045	
2.0	.452	.405	.366	.387	.349	.316	.265	.241	.221	.153	.140	.129	.049	.045	.042	
3.0	.444	.389	.345	.381	.336	.299	.262	.233	.210	.151	.136	.124	.049	.044	.041	
4.0	.437	.377	.332	.375	.326	.288	.258	.227	.203	.149	.133	.120	.048	.043	.039	
5.0	.430	.368	.323	.369	.318	.281	.254	.222	.198	.147	.131	.118	.047	.043	.039	
6.0	.422	.360	.316	.363	.312	.275	.250	.218	.195	.145	.129	.116	.047	.042	.038	
7.0	.415	.354	.311	.357	.307	.271	.247	.215	.192	.143	.127	.114	.046	.042	.038	
8.0	.409	.349	.307	.352	.303	.268	.244	.212	.190	.142	.125	.113	.046	.041	.038	
9.0	.403	.344	.305	.347	.299	.266	.240	.210	.189	.140	.124	.112	.045	.041	.037	
10.0	.397	.340	.302	.342	.295	.264	.238	.208	.187	.139	.123	.112	.045	.040	.037	

C Range: 0 - 360DEG  
 C Interval: 22.5DEG  
 Test Speed: 10.0deg/s  
 Temperature:24.8DEG  
 Operators:East  
 Test Date:2020-09-09

γ Range: 0 - 180DEG  
 γ Interval: 1.0DEG  
 Test System:EVERFINE GO-R5000\_V2 SYSTEM V2.0.351  
 Humidity:35%  
 Test Distance:2.492m [K=1.0000]  
 Remarks:

UGR(Unified Glare Rating) Table

Test:U:120.0V I:0.1322A P:15.14W PF:0.9540 Lamp Flux:753.733x1 lm										
NAME: ASD-LWS-11-D15CC-XX 4000K					TYPE:N/A			WEIGHT:N/A		
SPEC.:N/A					DIM.: N/A			SERIAL No.:N/A		
MFR.: ASD Lighting Corp					SUR.:N/A			Shielding Angle:N/A		
ceiling/cavity	0.7	0.7	0.5	0.5	0.3	0.7	0.7	0.5	0.5	0.3
walls	0.5	0.3	0.5	0.3	0.3	0.5	0.3	0.5	0.3	0.3
working plane	0.2	0.2	0.2	0.2	0.2	0.2	0.2	0.2	0.2	0.2
Room dimensions	Viewed crosswise					Viewed endwise				
x = 2H y = 2H	13.8	15.0	14.5	15.7	16.6	17.8	19.0	18.5	19.8	20.7
3H	15.8	16.9	16.6	17.7	18.6	20.9	22.0	21.7	22.8	23.7
4H	17.0	18.1	17.8	18.8	19.8	22.8	23.9	23.6	24.6	25.6
6H	18.4	19.4	19.2	20.2	21.1	25.0	26.0	25.8	26.8	27.7
8H	19.1	20.1	19.9	20.9	21.9	26.2	27.1	27.0	27.9	28.9
12H	20.0	20.9	20.8	21.7	22.7	27.6	28.5	28.4	29.3	30.3
4H 2H	15.6	16.6	16.3	17.4	18.3	18.3	19.3	19.0	20.1	21.0
3H	17.9	18.8	18.7	19.6	20.6	21.7	22.6	22.5	23.4	24.4
4H	19.3	20.1	20.1	20.9	21.9	23.8	24.7	24.6	25.5	26.5
6H	20.7	21.5	21.6	22.3	23.4	26.2	27.0	27.1	27.8	28.9
8H	21.5	22.2	22.4	23.1	24.2	27.6	28.3	28.4	29.1	30.2
12H	22.4	23.0	23.3	23.9	25.0	29.1	29.7	30.0	30.6	31.7
8H 4H	20.9	21.6	21.8	22.5	23.5	24.2	24.9	25.1	25.8	26.9
6H	22.7	23.3	23.6	24.2	25.3	26.9	27.5	27.8	28.4	29.5
8H	23.7	24.2	24.6	25.1	26.3	28.5	29.0	29.4	29.9	31.1
12H	24.8	25.2	25.7	26.1	27.3	30.3	30.8	31.2	31.7	32.8
12H 4H	21.5	22.1	22.3	23.0	24.1	24.3	24.9	25.1	25.8	26.9
6H	23.5	24.1	24.4	25.0	26.1	27.1	27.6	28.0	28.5	29.6
8H	24.7	25.2	25.6	26.1	27.2	28.8	29.2	29.7	30.2	31.3
Variations with the observer position at spacings:										
S = 1.0H	+ 0.1 / - 0.1					+ 0.1 / - 0.1				
1.5H	+ 0.2 / - 0.3					+ 0.2 / - 0.3				
2.0H	+ 0.3 / - 0.5					+ 0.3 / - 0.3				

CIE Pub.117 Corrected 753.7 lm Total Lamp Luminous Flux.(8log(F/F0) = -1.0)

C Range: 0 - 360DEG  
 C Interval: 22.5DEG  
 Test Speed: 10.0deg/s  
 Temperature:24.8DEG  
 Operators:East  
 Test Date:2020-09-09

γ Range: 0 - 180DEG  
 γ Interval: 1.0DEG  
 Test System:EVERFINE GO-R5000\_V2 SYSTEM V2.0.351  
 Humidity:35%  
 Test Distance:2.492m [K=1.0000]  
 Remarks:

**UTILIZATION FACTORS TABLE**

Test:U:120.0V I:0.1322A P:15.14W PF:0.9540 Lamp Flux:753.733x1 lm		
NAME: ASD-LWS-11-D15CC-XX 4000K	TYPE:N/A	WEIGHT:N/A
SPEC.:N/A	DIM.: N/A	SERIAL No.:N/A
MFR.: ASD Lighting Corp	SUR.:N/A	Shielding Angle:N/A

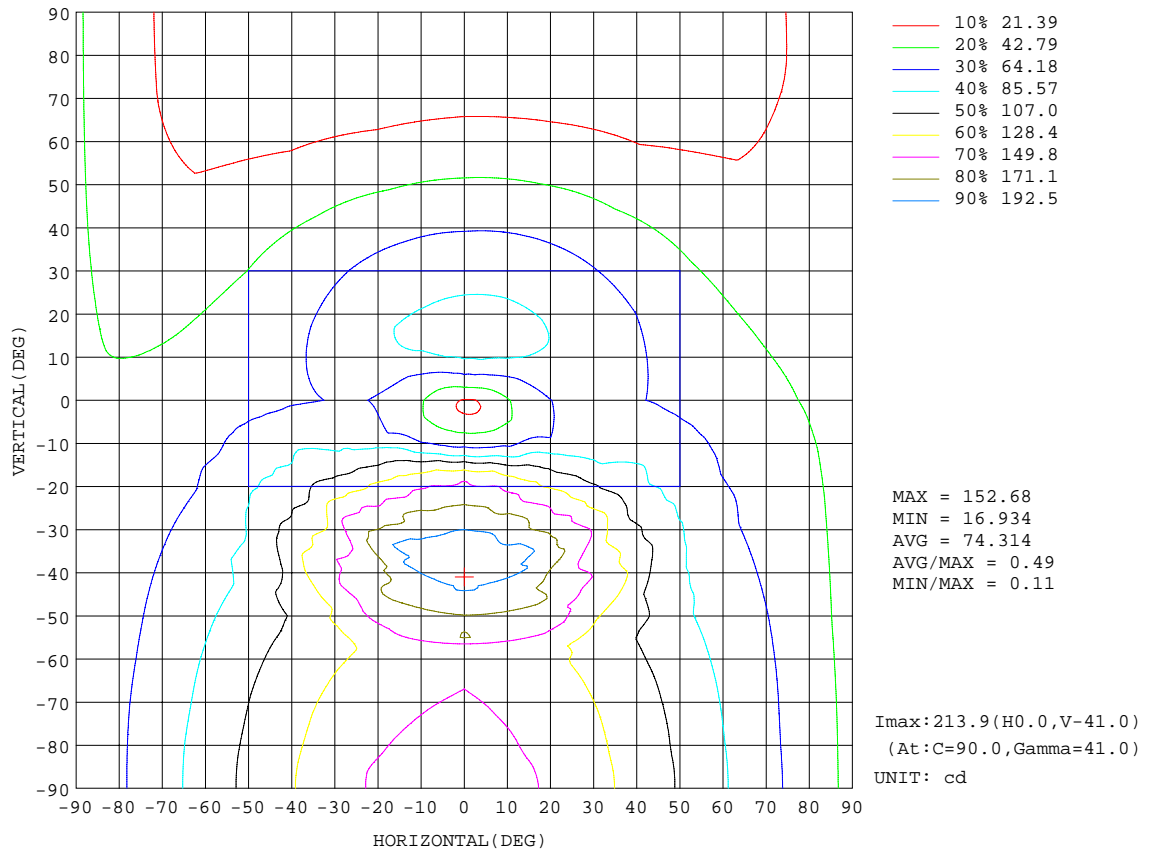
REFLECTANCE										
Ceiling	0.8	0.8	0.8	0.7	0.7	0.7	0.5	0.5	0.5	0
Walls	0.7	0.5	0.3	0.7	0.5	0.3	0.7	0.5	0.3	0
Working plane	0.2	0.2	0.2	0.2	0.2	0.2	0.2	0.2	0.2	0
ROOM INDEX	UTILIZATION FACTORS(PERCENT) $k(RI) \times RCR = 5$									
k = 0.60	41	29	21	40	28	21	37	26	20	13
0.80	50	37	28	48	35	28	44	33	26	18
1.00	58	44	35	55	42	34	50	42	32	22
1.25	65	51	42	61	49	41	55	45	38	26
1.50	70	57	47	66	54	46	59	50	42	30
2.00	77	65	56	73	62	54	65	56	50	35
2.50	82	71	62	77	67	59	69	61	54	38
3.00	86	76	67	81	72	64	72	64	58	41
4.00	91	82	75	85	78	71	75	69	64	45
5.00	94	86	80	88	81	75	78	73	68	47
ROOM INDEX	UF(total)									Direct
According to DIN EN 13032-2 2004			Suspended				SHRNOM = 1.25			

C Range: 0 - 360DEG  
 C Interval: 22.5DEG  
 Test Speed: 10.0deg/s  
 Temperature:24.8DEG  
 Operators:East  
 Test Date:2020-09-09

$\gamma$  Range: 0 - 180DEG  
 $\gamma$  Interval: 1.0DEG  
 Test System:EVERFINE GO-R5000\_V2 SYSTEM V2.0.351  
 Humidity:35%  
 Test Distance:2.492m [K=1.0000]  
 Remarks:

ISOCANDELA DIAGRAM

Test:U:120.0V I:0.1322A P:15.14W PF:0.9540 Lamp Flux:753.733x1 lm		
NAME: ASD-LWS-11-D15CC-XX 4000K	TYPE:N/A	WEIGHT:N/A
SPEC.:N/A	DIM.: N/A	SERIAL No.:N/A
MFR.: ASD Lighting Corp	SUR.:N/A	Shielding Angle:N/A



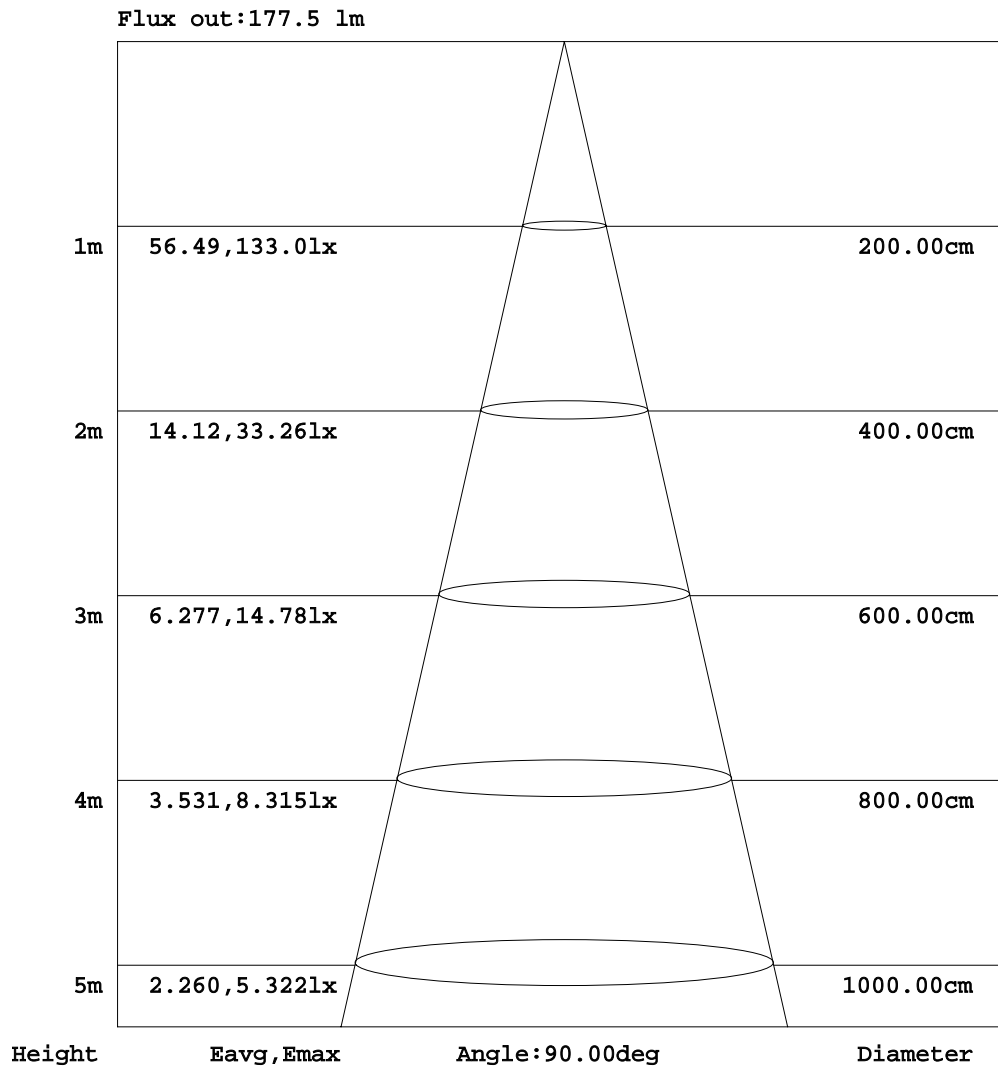
C Range: 0 - 360DEG  
 C Interval: 22.5DEG  
 Test Speed: 10.0deg/s  
 Temperature: 24.8DEG  
 Operators: East  
 Test Date: 2020-09-09

γ Range: 0 - 180DEG  
 γ Interval: 1.0DEG  
 Test System: EVERFINE GO-R5000\_V2 SYSTEM V2.0.351  
 Humidity: 35%  
 Test Distance: 2.492m [K=1.0000]  
 Remarks:



AAI Figure

Test:U:120.0V I:0.1322A P:15.14W PF:0.9540 Lamp Flux:753.733x1 lm		
NAME: ASD-LWS-11-D15CC-XX 4000K	TYPE:N/A	WEIGHT:N/A
SPEC.:N/A	DIM.: N/A	SERIAL No.:N/A
MFR.: ASD Lighting Corp	SUR.:N/A	Shielding Angle:N/A



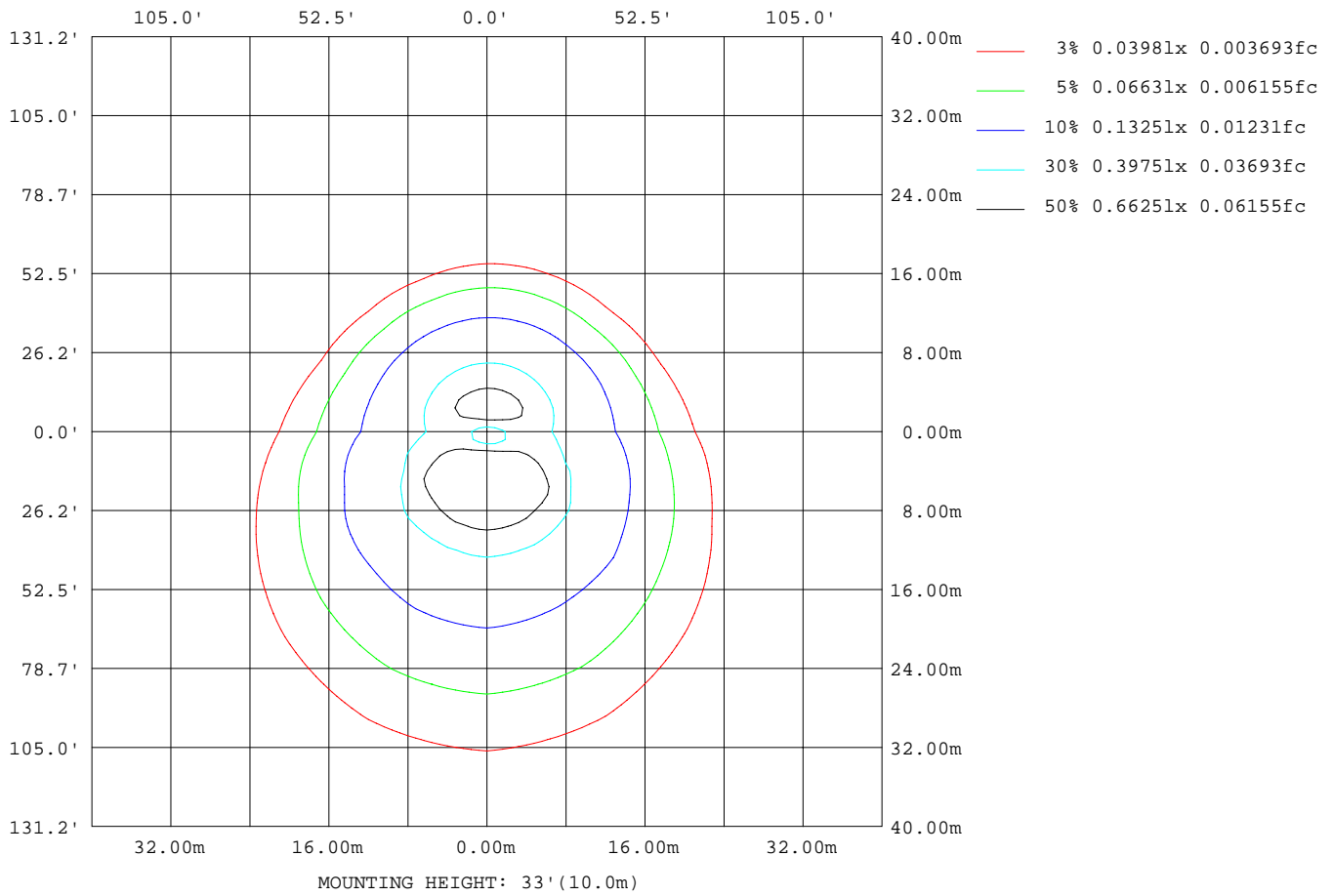
Note:The Curves indicate the illuminated area and the average illumination when the luminaire is at different distance.

C Range: 0 - 360DEG  
 C Interval: 22.5DEG  
 Test Speed: 10.0deg/s  
 Temperature:24.8DEG  
 Operators:East  
 Test Date:2020-09-09

γ Range: 0 - 180DEG  
 γ Interval: 1.0DEG  
 Test System:EVERFINE GO-R5000\_V2 SYSTEM V2.0.351  
 Humidity:35%  
 Test Distance:2.492m [K=1.0000]  
 Remarks:

**ISOLUX DIAGRAM**

Test:U:120.0V I:0.1322A P:15.14W PF:0.9540 Lamp Flux:753.733x1 lm		
NAME: ASD-LWS-11-D15CC-XX 4000K	TYPE:N/A	WEIGHT:N/A
SPEC.:N/A	DIM.: N/A	SERIAL No.:N/A
MFR.: ASD Lighting Corp	SUR.:N/A	Shielding Angle:N/A



C Range: 0 - 360DEG  
 C Interval: 22.5DEG  
 Test Speed: 10.0deg/s  
 Temperature:24.8DEG  
 Operators:East  
 Test Date:2020-09-09

γ Range: 0 - 180DEG  
 γ Interval: 1.0DEG  
 Test System:EVERFINE GO-R5000\_V2 SYSTEM V2.0.351  
 Humidity:35%  
 Test Distance:2.492m [K=1.0000]  
 Remarks:

**LED Avg.L Report**

Test:U:120.0V I:0.1322A P:15.14W PF:0.9540 Lamp Flux:753.733x1 lm		
NAME: ASD-LWS-11-D15CC-XX 4000K	TYPE:N/A	WEIGHT:N/A
SPEC.:N/A	DIM.: N/A	SERIAL No.:N/A
MFR.: ASD Lighting Corp	SUR.:N/A	Shielding Angle:N/A

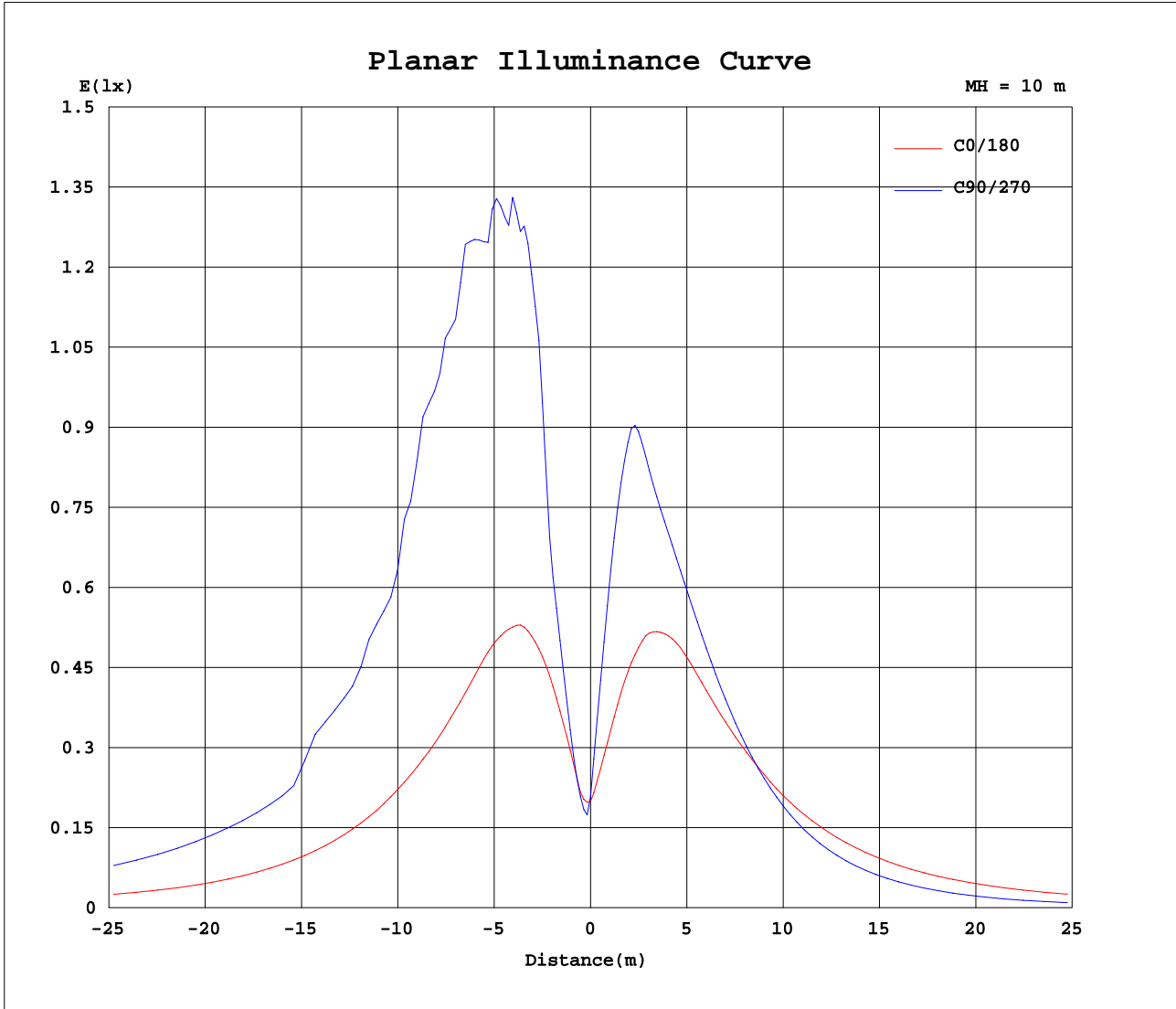
AvgL	cd/m2
L_0~180(65)av	1941
L_0~180(75)av	2856
L_0~180(85)av	7786
L_90~270(65)av	3157
L_90~270(75)av	5024
L_90~270(85)av	14765
L_45(65)av	2507
L_45(75)av	3808
L_45(85)av	10783

Standard: GB/T 29293-2012

C Range: 0 - 360DEG  
 C Interval: 22.5DEG  
 Test Speed: 10.0deg/s  
 Temperature:24.8DEG  
 Operators:East  
 Test Date:2020-09-09

γ Range: 0 - 180DEG  
 γ Interval: 1.0DEG  
 Test System:EVERFINE GO-R5000\_V2 SYSTEM V2.0.351  
 Humidity:35%  
 Test Distance:2.492m [K=1.0000]  
 Remarks:

Planar Illuminance Curve



C Range: 0 - 360DEG  
 C Interval: 22.5DEG  
 Test Speed: 10.0deg/s  
 Temperature: 24.8DEG  
 Operators: East  
 Test Date: 2020-09-09

γ Range: 0 - 180DEG  
 γ Interval: 1.0DEG  
 Test System: EVERFINE GO-R5000\_V2 SYSTEM V2.0.351  
 Humidity: 35%  
 Test Distance: 2.492m [K=1.0000]  
 Remarks:

LUMINOUS DISTRIBUTION INTENSITY DATA

Test:U:120.0V I:0.1322A P:15.14W PF:0.9540 Lamp Flux:753.733x1 lm		
NAME: ASD-LWS-11-D15CC-XX 4000K	TYPE:N/A	WEIGHT:N/A
SPEC.:N/A	DIM.: N/A	SERIAL No.:N/A
MFR.: ASD Lighting Corp	SUR.:N/A	Shielding Angle:N/A

Table--1

UNIT: cd

C(DEG) γ (DEG)	0	22.5	45	67.5	90	112.5	135	157.5	180	202.5	225	247.5	270	292.5	315	337.5			
0	20.6	20.6	20.6	20.6	20.6	20.6	20.6	20.6	20.6	20.6	20.6	20.6	20.6	20.6	20.6	20.6			
5	28.1	23.5	23.8	26.4	28.3	28.5	27.8	27.9	32.3	38.6	46.1	53.0	56.5	54.5	47.3	37.2			
10	42.4	37.9	43.7	52.7	58.0	54.8	47.7	42.4	45.9	55.0	68.0	81.1	86.5	83.6	71.4	55.0			
15	55.6	52.3	64.0	99.1	116	104	70.2	55.3	57.2	67.3	83.5	95.3	95.3	96.1	88.9	69.1			
20	66.0	61.8	102	140	151	142	109	65.8	64.2	75.1	89.3	88.9	88.7	89.9	92.5	78.8			
25	70.7	73.2	125	164	174	161	126	79.3	67.6	78.0	83.3	83.3	83.7	84.7	85.6	82.9			
30	71.7	83.3	138	180	190	183	138	87.8	67.1	75.1	76.6	77.2	77.6	78.9	79.5	80.0			
35	69.7	87.4	148	189	198	194	150	93.1	65.4	69.6	70.5	70.0	70.1	71.9	73.2	74.0			
40	67.3	92.6	158	189	207	190	151	99.5	63.7	64.1	63.4	61.9	61.8	63.7	66.2	68.4			
45	64.8	93.3	139	177	177	171	145	95.6	61.4	58.5	55.6	53.1	53.2	55.0	58.0	62.5			
50	61.8	90.9	139	167	168	157	144	95.4	59.3	52.2	47.2	44.3	44.7	46.2	49.5	55.9			
55	58.7	88.5	130	156	170	146	119	90.0	56.8	45.5	38.7	35.9	36.7	37.8	40.7	48.7			
60	55.3	82.4	117	131	141	132	116	83.8	54.1	38.5	30.5	28.0	29.3	30.2	32.3	41.0			
65	51.7	80.1	108	134	146	137	112	79.2	51.7	31.6	22.9	20.6	22.1	22.8	24.5	33.5			
70	48.4	75.9	110	138	150	140	114	79.9	49.4	25.4	15.9	14.1	15.8	16.1	17.3	27.1			
75	45.5	75.8	111	141	153	143	116	80.3	47.6	20.7	9.92	8.40	10.5	10.3	11.0	21.7			
80	42.8	75.6	112	142	156	145	117	80.5	46.4	17.1	5.16	3.87	6.16	5.76	5.88	17.2			
85	39.1	75.5	113	144	158	147	119	81.2	46.4	15.6	2.82	1.81	4.09	3.22	2.28	14.0			
90	38.6	76.0	114	145	159	148	119	81.5	46.4	15.9	2.71	1.73	3.95	2.97	2.12	14.0			
95	37.0	75.5	113	144	158	147	118	80.5	45.8	15.5	2.65	1.78	3.90	2.79	2.13	13.9			
100	39.2	73.9	110	141	154	143	115	78.5	44.1	14.6	2.52	1.88	3.88	2.76	2.15	13.4			
105	38.8	71.3	107	136	149	138	111	75.6	42.2	13.5	2.36	1.91	3.75	2.70	2.10	12.6			
110	37.3	68.1	102	130	142	132	106	72.0	40.0	12.1	2.16	1.92	3.62	2.58	2.01	11.5			
115	35.3	64.2	96.3	123	134	125	100	67.6	37.2	10.8	1.94	1.89	3.45	2.34	1.90	10.5			
120	32.7	59.6	89.7	115	125	116	93.0	62.6	34.3	10.03	1.71	1.86	3.30	2.13	1.77	9.60			
125	29.8	54.6	82.2	105	115	106	85.0	57.0	31.0	9.38	1.49	1.83	3.13	1.93	1.63	8.91			
130	26.7	49.1	74.0	94.7	103	95.9	76.5	51.0	27.4	8.63	1.30	1.75	2.88	1.80	1.47	8.29			
135	23.4	43.1	65.2	83.5	91.2	84.5	67.1	44.5	23.7	7.75	1.12	1.63	2.57	1.74	1.28	7.45			
140	20.0	37.0	55.6	71.7	78.3	72.4	57.1	37.8	19.9	6.91	0.98	1.47	2.24	1.69	1.06	6.34			
145	16.6	30.7	46.1	59.3	64.8	59.6	47.0	31.0	16.0	6.24	0.92	1.20	1.92	1.65	0.83	4.90			
150	13.1	24.4	36.7	46.8	51.0	47.1	37.0	24.3	12.3	5.61	0.99	0.89	1.59	1.50	0.68	3.29			
155	9.81	18.3	27.6	35.2	38.2	35.1	27.4	17.8	8.73	4.89	1.07	0.64	1.27	1.27	0.68	1.86			
160	6.64	12.5	18.7	23.8	25.6	23.4	18.2	11.6	5.45	3.78	1.02	0.50	0.96	0.96	0.65	0.99			
165	3.77	7.16	10.6	13.3	14.1	12.8	9.76	6.13	2.68	2.19	0.71	0.44	0.72	0.75	0.62	0.59			
170	1.57	2.85	4.06	5.04	5.11	4.53	3.18	1.91	0.78	0.73	0.34	0.37	0.53	0.59	0.54	0.41			
175	0.41	0.49	0.53	0.49	0.41	0.31	0.32	0.31	0.31	0.31	0.31	0.31	0.32	0.29	0.34	0.31			
180	0.38	0.35	0.28	0.26	0.20	0.21	0.27	0.31	0.36	0.35	0.34	0.29	0.24	0.17	0.23	0.27			

C Range: 0 - 360DEG  
 C Interval: 22.5DEG  
 Test Speed: 10.0deg/s  
 Temperature:24.8DEG  
 Operators:East  
 Test Date:2020-09-09

γ Range: 0 - 180DEG  
 γ Interval: 1.0DEG  
 Test System:EVERFINE GO-R5000\_V2 SYSTEM V2.0.351  
 Humidity:35%  
 Test Distance:2.492m [K=1.0000]  
 Remarks: