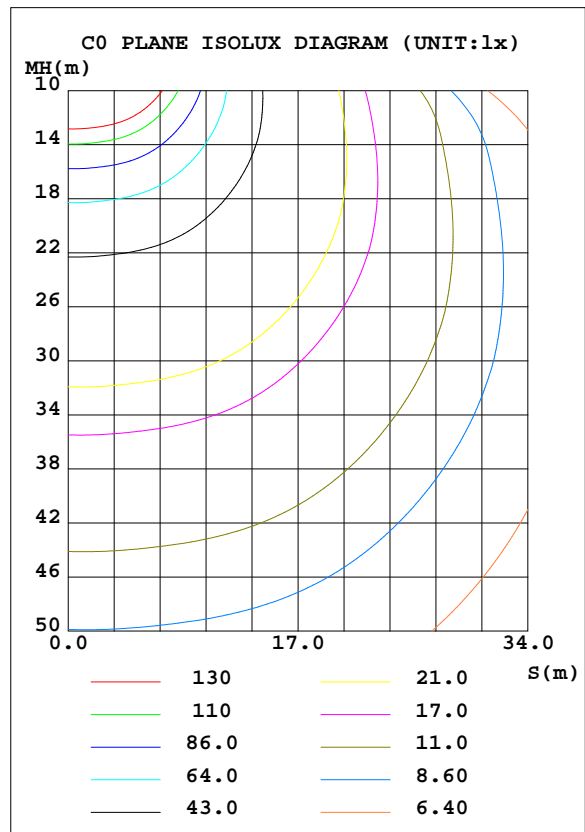
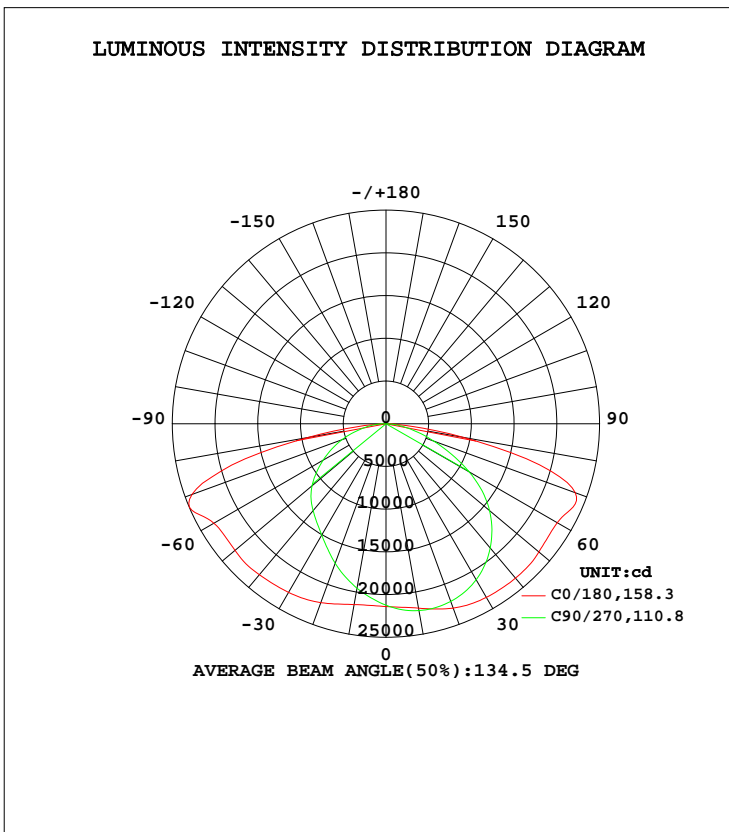


LUMINAIRE PHOTOMETRIC TEST REPORT

Test:U:120.0V I:4.1114A P:492.48W PF:0.9982 Freq:60.00Hz Lamp Flux:83958x1 lm		
NAME:	TYPE:LED	WEIGHT:
SPEC.:ASD-LSB5A-PRO-500BR_500W_5000K	DIM.:	SERIAL No.:
MFR.: ASD Lighting Corp	SUR.:	Shielding Angle:

DATA OF LAMP		PHOTOMETRIC DATA Eff: 170.48 lm/W			
MODEL	ASD-LSB5A-PRO-500BR	I <sub>max</sub> (cd)	24990	S/MH(C0/180)	1.64
NOMINAL POWER(W)	500	LOR(%)	100.0	S/MH(C90/270)	1.07
RATED VOLTAGE(V)	120-277	TOTAL FLUX(lm)	83958	η UP, DN(C0-180)	0.0,55.3
NOMINAL FLUX(lm)	83958	CIE CLASS	DIRECT	η UP, DN(C180-360)	0.0,44.7
LAMPS INSIDE	1	η up(%)	0.0	CIBSE SHR NOM	1.50
TEST VOLTAGE(V)	120	η down(%)	100.0	CIBSE SHR MAX	1.55



C Range: 0 - 360DEG  
 C Interval: 22.5DEG  
 Test Speed: HIGH  
 Temperature: 25.1DEG  
 Operators: Alan Wang  
 Test Date: 18 October 2023

γ Range: 0 - 180DEG  
 γ Interval: 1.0DEG  
 Test System: EVERFINE GO-R5000\_V2 SYSTEM V2.00.416  
 Humidity: 43.8%  
 Test Distance: 2.500m [K=1.0393]  
 Remarks:

## ZONAL FLUX DIAGRAM

## ZONAL FLUX DIAGRAM:

$\gamma$	C0	C45	C90	C135	C180	C225	C270	C315	$\gamma$	$\Phi$ zone	$\Phi$ total	%lum,lamp
10	2191	2238	2221	2199	2149	2011	1955	2026	0- 10	2027	2027	2.41,2.41
20	2296	2311	2213	2265	2228	1885	1738	1927	10- 20	5998	8025	9.56,9.56
30	2347	2300	2109	2263	2280	1720	1505	1773	20- 30	9597	17621	21,21
40	2359	2176	1898	2151	2306	1531	1328	1578	30- 40	12413	30035	35.8,35.8
50	2335	1930	1583	1910	2306	1338	1131	1363	40- 50	14195	44230	52.7,52.7
60	2316	1569	1122	1541	2327	1058	848.2	1049	50- 60	14453	58683	69.9,69.9
70	2356	1207	596.8	1177	2414	709.0	550.7	670.0	60- 70	13162	71845	85.6,85.6
80	919.1	917.6	218.0	881.8	930.1	403.8	248.4	371.2	70- 80	9536	81382	96.9,96.9
90	0	0	0	0	0	0	0	0	80- 90	2576	83958	100,100
100	0	0	0	0	0	0	0	0	90-100	0	83958	100,100
110	0	0	0	0	0	0	0	0	100-110	0	83958	100,100
120	0	0	0	0	0	0	0	0	110-120	0	83958	100,100
130	0	0	0	0	0	0	0	0	120-130	0	83958	100,100
140	0	0	0	0	0	0	0	0	130-140	0	83958	100,100
150	0	0	0	0	0	0	0	0	140-150	0	83958	100,100
160	0	0	0	0	0	0	0	0	150-160	0	83958	100,100
170	0	0	0	0	0	0	0	0	160-170	0	83958	100,100
180	0	0	0	0	0	0	0	0	170-180	0	83958	100,100
DEG	LUMINOUS INTENSITY:×10cd									UNIT:lm		

Conical surface Flux(90deg): 36990 lm

%lum = 44.1%

%lamp = 44.1%

Conical surface Flux(120deg): 58683 lm

%lum = 69.9%

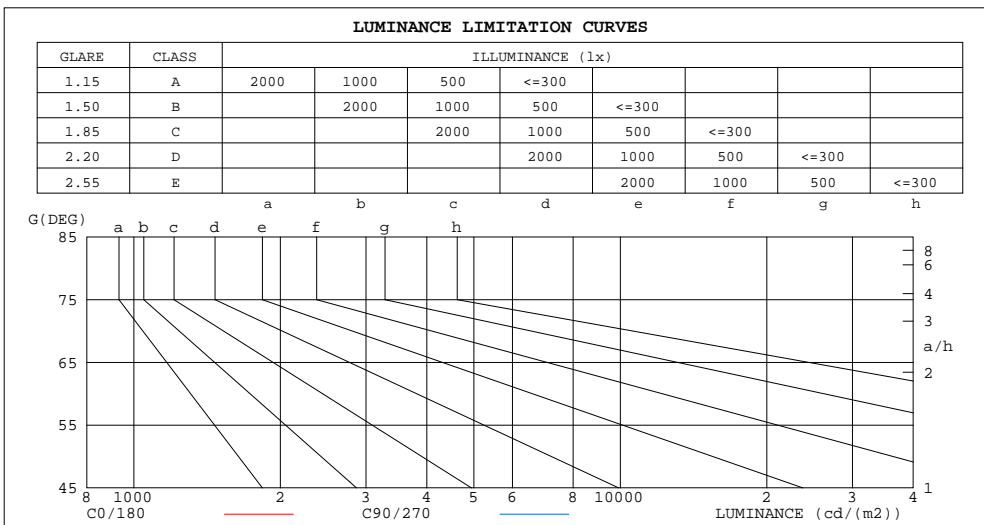
%lamp = 69.9%

C Range: 0 - 360DEG  
 C Interval: 22.5DEG  
 Test Speed: HIGH  
 Temperature: 25.1DEG  
 Operators: Alan Wang  
 Test Date: 18 October 2023

$\gamma$  Range: 0 - 180DEG  
 $\gamma$  Interval: 1.0DEG  
 Test System: EVERFINE GO-R5000\_V2 SYSTEM V2.00.416  
 Humidity: 43.8%  
 Test Distance: 2.500m [K=1.0393]  
 Remarks:

LUMINANCE LIMITATION CURVES

Test:U:120.0V I:4.1114A P:492.48W PF:0.9982 Freq:60.00Hz Lamp Flux:83958x1 lm		
NAME:	TYPE:LED	WEIGHT:
SPEC.:ASD-LSB5A-PRO-500BR_500W_5000K	DIM.:	SERIAL No.:
MFR.: ASD Lighting Corp	SUR.:	Shielding Angle:



LUMINANCE cd/(m2)		
G(DEG)	C0/180	C90/270
85	188242	75841
80	389162	92324
75	527953	110001
70	506441	128309
65	414448	147569
60	340552	164980
55	296618	176193
50	267105	181052
45	245031	182329

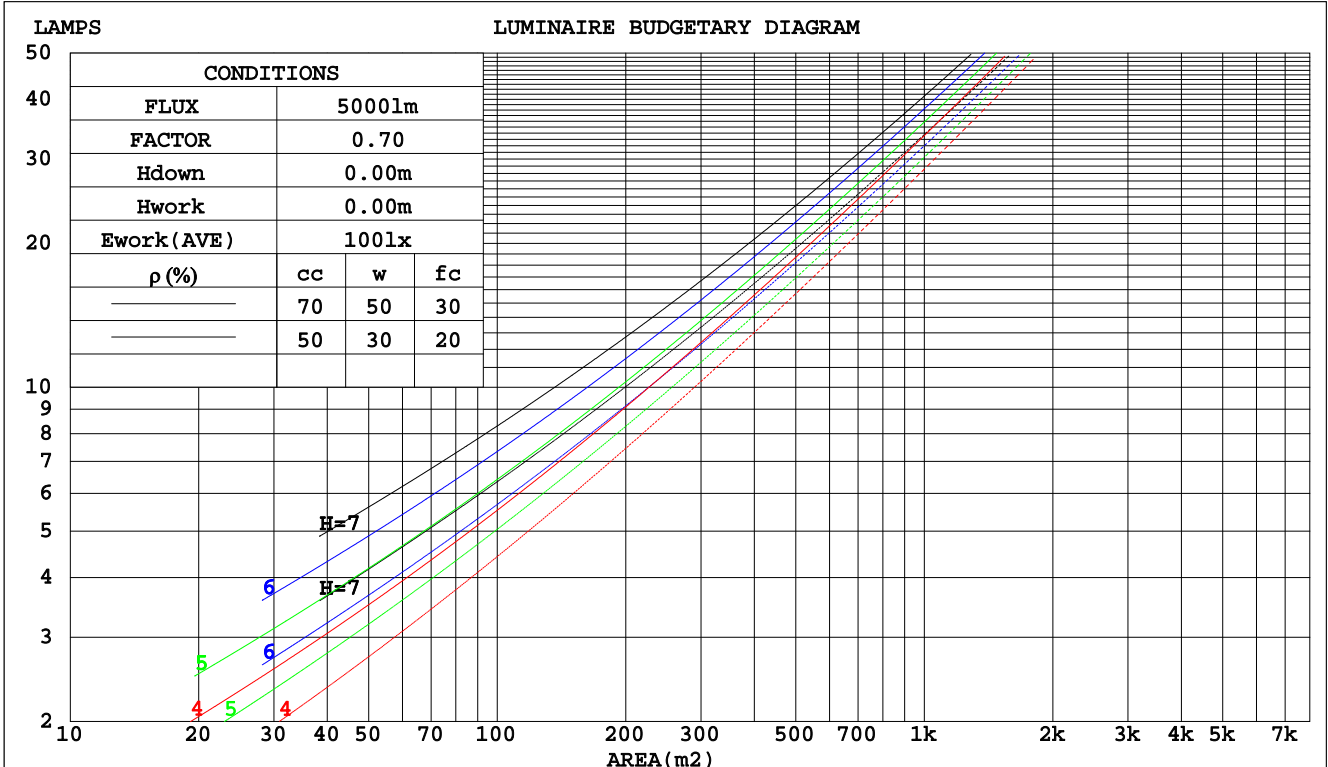
C Range: 0 - 360DEG  
 C Interval: 22.5DEG  
 Test Speed: HIGH  
 Temperature: 25.1DEG  
 Operators: Alan Wang  
 Test Date: 18 October 2023

$\gamma$  Range: 0 - 180DEG  
 $\gamma$  Interval: 1.0DEG  
 Test System: EVERFINE GO-R5000\_V2 SYSTEM V2.00.416  
 Humidity: 43.8%  
 Test Distance: 2.500m [K=1.0393]  
 Remarks:

CU AND LUMINAIRE BUDGETARY ESTIMATE DIAGRAM

Test:U:120.0V I:4.1114A P:492.48W PF:0.9982 Freq:60.00Hz Lamp Flux:83958x1 lm		
NAME:	TYPE:LED	WEIGHT:
SPEC.:ASD-LSB5A-PRO-500BR_500W_5000K	DIM.:	SERIAL No.:
MFR.: ASD Lighting Corp	SUR.:	Shielding Angle:

pcc	80%			70%			50%			30%			10%			0
	50%	30%	10%	50%	30%	10%	50%	30%	10%	50%	30%	10%	50%	30%	10%	0
pw																0
pfc	20%			20%			20%			20%			20%			0
RCR	RCR:Room Cavity Ratio      Coefficients of Utilization(CU)															
0.0	1.19	1.19	1.19	1.16	1.16	1.16	1.11	1.11	1.11	1.06	1.06	1.06	1.02	1.02	1.02	1.00
1.0	1.01	.96	.92	.99	.95	.91	.95	.91	.88	.91	.88	.85	.87	.85	.82	.80
2.0	.87	.79	.72	.85	.78	.71	.81	.75	.70	.78	.73	.68	.74	.70	.67	.64
3.0	.75	.66	.58	.73	.65	.58	.70	.63	.57	.67	.61	.56	.65	.59	.55	.52
4.0	.65	.56	.48	.64	.55	.48	.61	.54	.47	.59	.52	.47	.57	.51	.46	.44
5.0	.58	.48	.41	.57	.48	.41	.55	.46	.40	.52	.45	.40	.51	.44	.39	.37
6.0	.52	.42	.35	.51	.42	.35	.49	.41	.35	.47	.40	.34	.45	.39	.34	.32
7.0	.47	.37	.31	.46	.37	.31	.44	.36	.30	.43	.35	.30	.41	.35	.30	.28
8.0	.42	.33	.27	.42	.33	.27	.40	.32	.27	.39	.32	.27	.38	.31	.26	.24
9.0	.39	.30	.24	.38	.30	.24	.37	.29	.24	.36	.29	.24	.35	.28	.24	.22
10.0	.36	.27	.22	.35	.27	.22	.34	.27	.21	.33	.26	.21	.32	.26	.21	.19



C Range: 0 - 360DEG  
 C Interval: 22.5DEG  
 Test Speed: HIGH  
 Temperature: 25.1DEG  
 Operators: Alan Wang  
 Test Date: 18 October 2023

γ Range: 0 - 180DEG  
 γ Interval: 1.0DEG  
 Test System: EVERFINE GO-R5000\_V2 SYSTEM V2.00.416  
 Humidity: 43.8%  
 Test Distance: 2.500m [K=1.0393]  
 Remarks:

WEC AND CCEC

Test:U:120.0V I:4.1114A P:492.48W PF:0.9982 Freq:60.00Hz Lamp Flux:83958x1 lm		
NAME:	TYPE:LED	WEIGHT:
SPEC.:ASD-LSB5A-PRO-500BR_500W_5000K	DIM.:	SERIAL No.:
MFR.: ASD Lighting Corp	SUR.:	Shielding Angle:

ρcc	80%			70%			50%			30%			10%			0
ρw	50%	30%	10%	50%	30%	10%	50%	30%	10%	50%	30%	10%	50%	30%	10%	0
ρfc	20%			20%			20%			20%			20%			0
RCR	RCR:Room Cavity Ratio						Wall Exitance Coefficients(WEC)									
0.0																
1.0	.356	.203	.064	.349	.199	.063	.336	.193	.061	.323	.186	.060	.312	.181	.058	
2.0	.329	.180	.055	.322	.177	.055	.310	.172	.054	.299	.168	.053	.289	.163	.051	
3.0	.299	.159	.048	.293	.157	.047	.283	.153	.047	.273	.149	.046	.264	.146	.045	
4.0	.272	.142	.042	.267	.140	.041	.258	.137	.041	.249	.134	.040	.241	.131	.040	
5.0	.249	.127	.037	.245	.126	.037	.236	.123	.036	.228	.120	.036	.221	.118	.035	
6.0	.229	.115	.033	.225	.114	.033	.217	.111	.032	.210	.109	.032	.204	.107	.032	
7.0	.211	.105	.030	.208	.104	.030	.201	.102	.029	.195	.100	.029	.189	.098	.029	
8.0	.196	.096	.027	.193	.095	.027	.187	.094	.027	.182	.092	.027	.176	.090	.026	
9.0	.183	.089	.025	.180	.088	.025	.175	.086	.025	.170	.085	.024	.165	.084	.024	
10.0	.171	.082	.023	.169	.082	.023	.164	.080	.023	.159	.079	.023	.155	.078	.022	

ρcc	80%			70%			50%			30%			10%			0
ρw	50%	30%	10%	50%	30%	10%	50%	30%	10%	50%	30%	10%	50%	30%	10%	0
ρfc	20%			20%			20%			20%			20%			0
RCR	RCR:Room Cavity Ratio						Ceiling Cavity Exitance Coefficients(CCEC)									
0.0	.190	.190	.190	.163	.163	.163	.111	.111	.111	.064	.064	.064	.020	.020	.020	
1.0	.184	.156	.131	.157	.134	.112	.107	.092	.078	.062	.053	.045	.020	.017	.015	
2.0	.177	.132	.094	.152	.113	.081	.104	.078	.056	.060	.046	.033	.019	.015	.011	
3.0	.170	.114	.070	.146	.099	.061	.100	.069	.043	.058	.040	.025	.019	.013	.008	
4.0	.163	.102	.055	.139	.088	.048	.096	.061	.034	.055	.036	.020	.018	.012	.007	
5.0	.155	.091	.044	.133	.079	.039	.092	.055	.027	.053	.032	.016	.017	.011	.005	
6.0	.147	.083	.037	.127	.072	.032	.087	.050	.023	.051	.030	.014	.016	.010	.004	
7.0	.140	.076	.031	.121	.066	.027	.083	.046	.019	.048	.027	.012	.016	.009	.004	
8.0	.133	.071	.027	.115	.061	.024	.079	.043	.017	.046	.025	.010	.015	.008	.003	
9.0	.127	.066	.024	.109	.057	.021	.076	.040	.015	.044	.024	.009	.014	.008	.003	
10.0	.121	.061	.022	.104	.053	.019	.072	.037	.013	.042	.022	.008	.014	.007	.003	

C Range: 0 - 360DEG  
 C Interval: 22.5DEG  
 Test Speed: HIGH  
 Temperature: 25.1DEG  
 Operators: Alan Wang  
 Test Date: 18 October 2023

γ Range: 0 - 180DEG  
 γ Interval: 1.0DEG  
 Test System: EVERFINE GO-R5000\_V2 SYSTEM V2.00.416  
 Humidity: 43.8%  
 Test Distance: 2.500m [K=1.0393]  
 Remarks:

UGR(Unified Glare Rating) Table

Test:U:120.0V I:4.1114A P:492.48W PF:0.9982 Freq:60.00Hz Lamp Flux:83958x1 lm										
NAME:			TYPE:LED			WEIGHT:				
SPEC.:ASD-LSB5A-PRO-500BR_500W_5000K			DIM.:			SERIAL No.:				
MFR.: ASD Lighting Corp			SUR.:			Shielding Angle:				
ceiling/cavity	0.7	0.7	0.5	0.5	0.3	0.7	0.7	0.5	0.5	0.3
walls	0.5	0.3	0.5	0.3	0.3	0.5	0.3	0.5	0.3	0.3
working plane	0.2	0.2	0.2	0.2	0.2	0.2	0.2	0.2	0.2	0.2
Room dimensions	Viewed crosswise					Viewed endwise				
x = 2H y = 2H	33.8	35.4	34.0	35.6	35.8	31.0	32.7	31.3	32.9	33.1
3H	37.0	38.5	37.3	38.8	39.0	32.2	33.8	32.5	34.0	34.2
4H	38.5	40.0	38.8	40.2	40.5	32.6	34.1	32.9	34.3	34.6
6H	39.3	40.7	39.7	41.0	41.3	32.8	34.2	33.2	34.5	34.8
8H	39.5	40.8	39.8	41.1	41.4	32.9	34.2	33.2	34.5	34.8
12H	39.5	40.8	39.9	41.1	41.4	32.9	34.2	33.3	34.5	34.8
4H 2H	34.2	35.7	34.6	36.0	36.2	32.2	33.7	32.5	33.9	34.2
3H	37.6	38.9	38.0	39.2	39.5	33.6	34.9	34.0	35.2	35.5
4H	39.3	40.5	39.7	40.8	41.1	34.1	35.3	34.5	35.6	36.0
6H	40.3	41.4	40.7	41.7	42.1	34.4	35.5	34.8	35.8	36.2
8H	40.5	41.5	40.9	41.9	42.3	34.5	35.5	34.9	35.8	36.2
12H	40.6	41.5	41.0	41.9	42.3	34.5	35.4	35.0	35.8	36.2
8H 4H	39.5	40.5	39.9	40.9	41.3	35.3	36.3	35.8	36.7	37.1
6H	40.7	41.6	41.2	42.0	42.4	35.9	36.7	36.4	37.2	37.6
8H	41.0	41.8	41.5	42.2	42.7	36.1	36.8	36.5	37.2	37.7
12H	41.2	41.8	41.6	42.2	42.7	36.1	36.8	36.6	37.2	37.7
12H 4H	39.5	40.4	39.9	40.8	41.2	35.6	36.5	36.0	36.9	37.3
6H	40.8	41.5	41.3	42.0	42.4	36.4	37.2	36.9	37.6	38.0
8H	41.2	41.8	41.6	42.3	42.7	36.7	37.3	37.2	37.8	38.3
Variations with the observer position at spacings:										
S = 1.0H	+ 0.0 / - 0.1					+ 0.1 / - 0.2				
1.5H	+ 0.1 / - 0.1					+ 0.2 / - 0.4				
2.0H	+ 0.1 / - 0.2					+ 0.2 / - 0.5				

CIE Pub.117, 83958 lm Total Lamp Luminous Flux Corrected (8log(F/F0) = 15.4)  
 Area: 0.136 m2

C Range: 0 - 360DEG  
 C Interval: 22.5DEG  
 Test Speed: HIGH  
 Temperature: 25.1DEG  
 Operators: Alan Wang  
 Test Date: 18 October 2023

γ Range: 0 - 180DEG  
 γ Interval: 1.0DEG  
 Test System: EVERFINE GO-R5000\_V2 SYSTEM V2.00.416  
 Humidity: 43.8%  
 Test Distance: 2.500m [K=1.0393]  
 Remarks:

## UTILIZATION FACTORS TABLE

Test:U:120.0V I:4.1114A P:492.48W PF:0.9982 Freq:60.00Hz Lamp Flux:83958x1 lm		
NAME:	TYPE:LED	WEIGHT:
SPEC.:ASD-LSB5A-PRO-500BR_500W_5000K	DIM.:	SERIAL No.:
MFR.: ASD Lighting Corp	SUR.:	Shielding Angle:

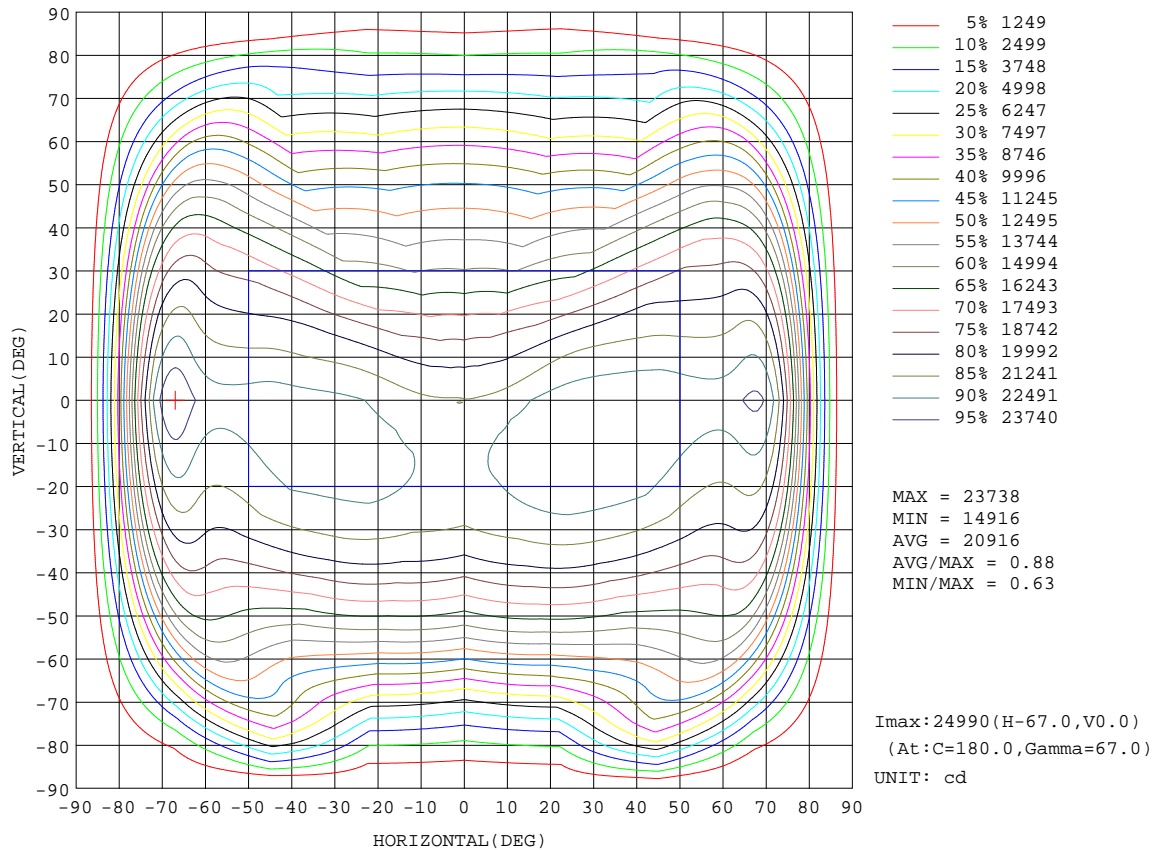
REFLECTANCE										
Ceiling	0.8	0.8	0.8	0.7	0.7	0.7	0.5	0.5	0.5	0
Walls	0.7	0.5	0.3	0.7	0.5	0.3	0.7	0.5	0.3	0
Working plane	0.2	0.2	0.2	0.2	0.2	0.2	0.2	0.2	0.2	0
ROOM INDEX	UTILIZATION FACTORS(PERCENT) $k(RI) \times RCR = 5$									
k = 0.60	53	40	33	52	40	33	51	40	33	26
0.80	63	50	42	61	49	42	60	49	41	34
1.00	71	59	50	70	58	50	67	60	50	42
1.25	78	66	58	77	66	58	74	64	57	49
1.50	84	72	64	82	71	64	79	70	63	55
2.00	91	81	74	89	80	73	85	78	72	63
2.50	96	87	80	93	85	79	89	83	77	68
3.00	99	91	85	97	90	84	93	87	82	73
4.00	104	97	92	102	96	91	97	92	88	79
5.00	107	101	97	104	99	95	100	96	92	82
ROOM INDEX	UF(total)									Direct
According to DIN EN 13032-2 2004			Suspended				SHRNOM = 1.25			

C Range: 0 - 360DEG  
 C Interval: 22.5DEG  
 Test Speed: HIGH  
 Temperature: 25.1DEG  
 Operators: Alan Wang  
 Test Date: 18 October 2023

$\gamma$  Range: 0 - 180DEG  
 $\gamma$  Interval: 1.0DEG  
 Test System: EVERFINE GO-R5000\_V2 SYSTEM V2.00.416  
 Humidity: 43.8%  
 Test Distance: 2.500m [K=1.0393]  
 Remarks:

ISOCANDELA DIAGRAM

Test:U:120.0V I:4.1114A P:492.48W PF:0.9982 Freq:60.00Hz Lamp Flux:83958x1 lm		
NAME:	TYPE:LED	WEIGHT:
SPEC.:ASD-LSB5A-PRO-500BR_500W_5000K	DIM.:	SERIAL No.:
MFR.: ASD Lighting Corp	SUR.:	Shielding Angle:



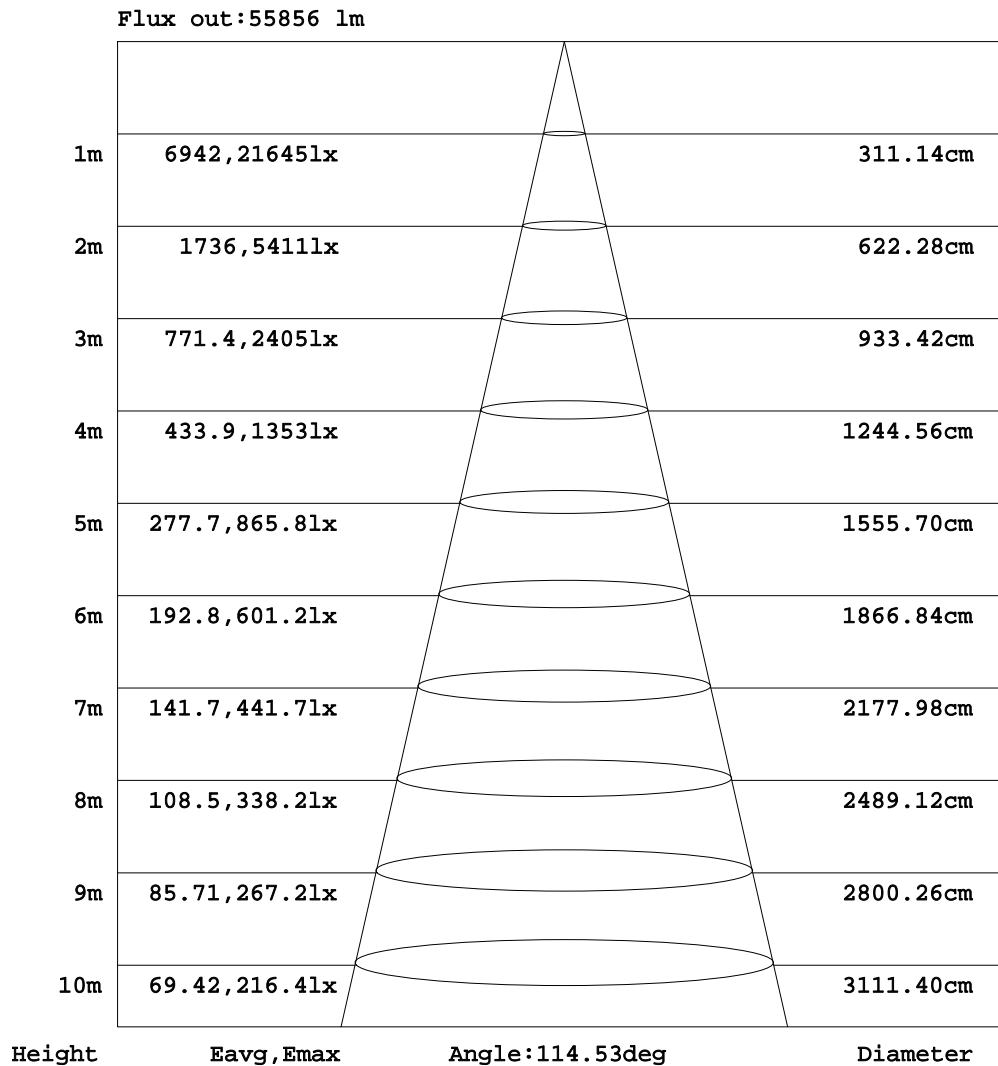
C Range: 0 - 360DEG  
 C Interval: 22.5DEG  
 Test Speed: HIGH  
 Temperature: 25.1DEG  
 Operators: Alan Wang  
 Test Date: 18 October 2023

γ Range: 0 - 180DEG  
 γ Interval: 1.0DEG  
 Test System: EVERFINE GO-R5000\_V2 SYSTEM V2.00.416  
 Humidity: 43.8%  
 Test Distance: 2.500m [K=1.0393]  
 Remarks:



AAI Figure

Test:U:120.0V I:4.1114A P:492.48W PF:0.9982 Freq:60.00Hz Lamp Flux:83958x1 lm		
NAME:	TYPE:LED	WEIGHT:
SPEC.:ASD-LSB5A-PRO-500BR_500W_5000K	DIM.:	SERIAL No.:
MFR.: ASD Lighting Corp	SUR.:	Shielding Angle:



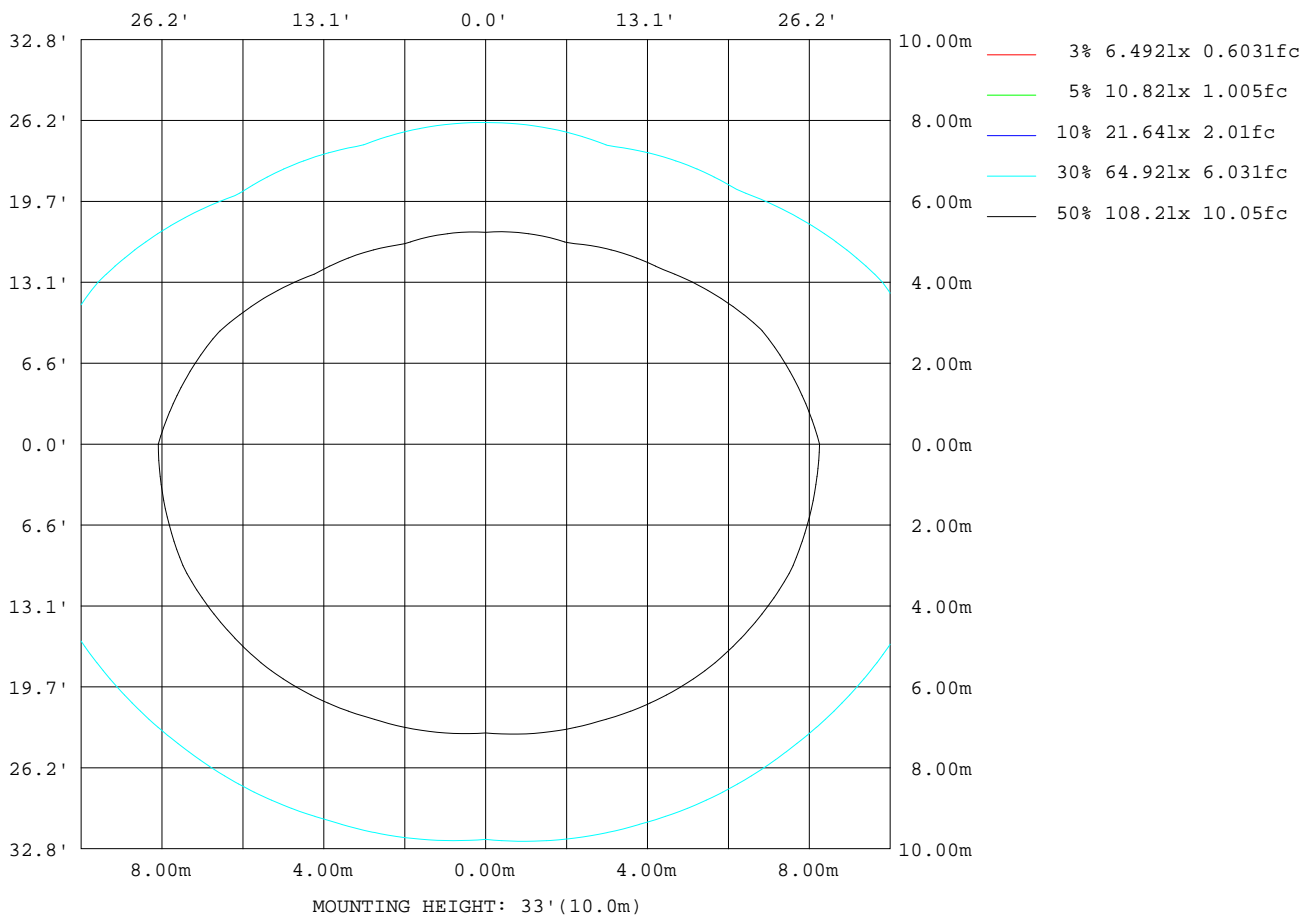
Note:The Curves indicate the illuminated area and the average illumination when the luminaire is at different distance.

C Range: 0 - 360DEG  
 C Interval: 22.5DEG  
 Test Speed: HIGH  
 Temperature: 25.1DEG  
 Operators:Alan Wang  
 Test Date:18 October 2023

γ Range: 0 - 180DEG  
 γ Interval: 1.0DEG  
 Test System:EVERFINE GO-R5000\_V2 SYSTEM V2.00.416  
 Humidity: 43.8%  
 Test Distance:2.500m [K=1.0393]  
 Remarks:

ISOLUX DIAGRAM

Test:U:120.0V I:4.1114A P:492.48W PF:0.9982 Freq:60.00Hz Lamp Flux:83958x1 lm		
NAME:	TYPE:LED	WEIGHT:
SPEC.:ASD-LSB5A-PRO-500BR_500W_5000K	DIM.:	SERIAL No.:
MFR.: ASD Lighting Corp	SUR.:	Shielding Angle:



C Range: 0 - 360DEG  
 C Interval: 22.5DEG  
 Test Speed: HIGH  
 Temperature: 25.1DEG  
 Operators: Alan Wang  
 Test Date: 18 October 2023

γ Range: 0 - 180DEG  
 γ Interval: 1.0DEG  
 Test System: EVERFINE GO-R5000\_V2 SYSTEM V2.00.416  
 Humidity: 43.8%  
 Test Distance: 2.500m [K=1.0393]  
 Remarks:

LED Avg.L Report

Test:U:120.0V I:4.1114A P:492.48W PF:0.9982 Freq:60.00Hz Lamp Flux:83958x1 lm		
NAME:	TYPE:LED	WEIGHT:
SPEC.:ASD-LSB5A-PRO-500BR_500W_5000K	DIM.:	SERIAL No.:
MFR.: ASD Lighting Corp	SUR.:	Shielding Angle:

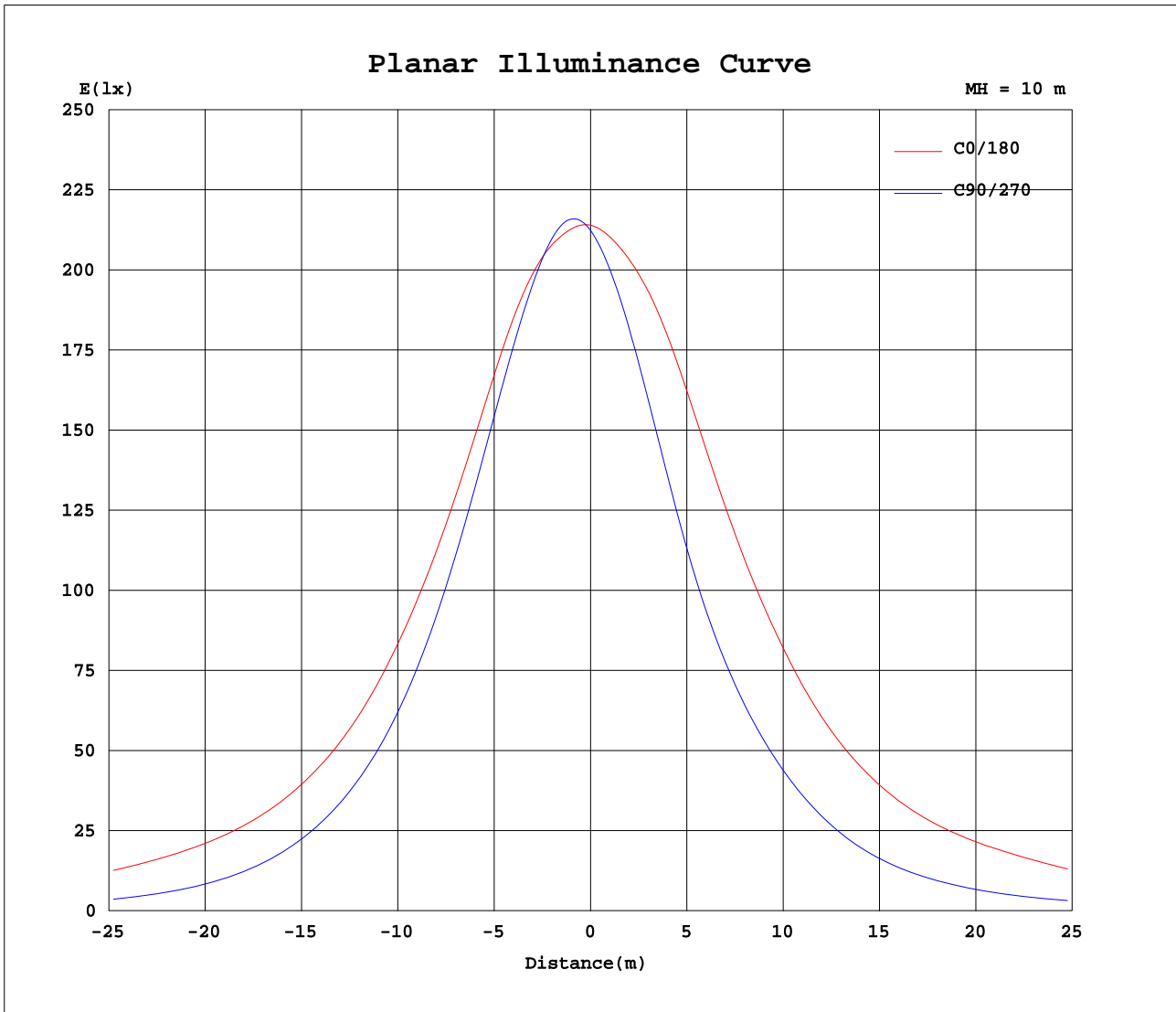
AvgL	cd/m2
L_0~180(65)av	421491
L_0~180(75)av	529702
L_0~180(85)av	201289
L_90~270(65)av	134676
L_90~270(75)av	110205
L_90~270(85)av	93160
L_45(65)av	194238
L_45(75)av	229039
L_45(85)av	263279

Standard: GB/T 29293-2012

C Range: 0 - 360DEG  
 C Interval: 22.5DEG  
 Test Speed: HIGH  
 Temperature: 25.1DEG  
 Operators: Alan Wang  
 Test Date: 18 October 2023

γ Range: 0 - 180DEG  
 γ Interval: 1.0DEG  
 Test System: EVERFINE GO-R5000\_V2 SYSTEM V2.00.416  
 Humidity: 43.8%  
 Test Distance: 2.500m [K=1.0393]  
 Remarks:

Planar Illuminance Curve



C Range: 0 - 360DEG  
 C Interval: 22.5DEG  
 Test Speed: HIGH  
 Temperature: 25.1DEG  
 Operators: Alan Wang  
 Test Date: 18 October 2023

$\gamma$  Range: 0 - 180DEG  
 $\gamma$  Interval: 1.0DEG  
 Test System: EVERFINE GO-R5000\_V2 SYSTEM V2.00.416  
 Humidity: 43.8%  
 Test Distance: 2.500m [K=1.0393]  
 Remarks:

LUMINOUS DISTRIBUTION INTENSITY DATA

Test:U:120.0V I:4.1114A P:492.48W PF:0.9982 Freq:60.00Hz Lamp Flux:83958x1 lm		
NAME:	TYPE:LED	WEIGHT:
SPEC.:ASD-LSB5A-PRO-500BR_500W_5000K	DIM.:	SERIAL No.:
MFR.: ASD Lighting Corp	SUR.:	Shielding Angle:

Table--1

UNIT: x10cd

C(DEG) γ (DEG)	0	22.5	45	67.5	90	112.5	135	157.5	180	202.5	225	247.5	270	292.5	315	337.5			
0	2140	2135	2131	2127	2123	2121	2117	2114	2140	2135	2131	2127	2123	2121	2117	2114			
5	2156	2176	2186	2189	2185	2175	2158	2137	2134	2100	2070	2051	2044	2053	2072	2099			
10	2191	2229	2238	2231	2221	2211	2199	2174	2149	2078	2011	1967	1955	1977	2026	2096			
15	2245	2290	2282	2250	2229	2227	2237	2225	2185	2071	1952	1873	1852	1887	1982	2107			
20	2296	2342	2311	2249	2213	2224	2265	2275	2228	2070	1885	1768	1738	1783	1927	2120			
25	2330	2370	2318	2227	2174	2202	2275	2307	2260	2064	1808	1651	1617	1663	1859	2125			
30	2347	2372	2300	2182	2109	2157	2263	2318	2280	2046	1720	1534	1505	1541	1773	2113			
35	2354	2356	2252	2110	2018	2088	2222	2310	2293	2019	1624	1429	1411	1430	1677	2087			
40	2359	2322	2176	2014	1898	1990	2151	2286	2306	1992	1531	1337	1328	1331	1578	2054			
45	2356	2270	2068	1889	1753	1863	2047	2246	2318	1958	1440	1249	1240	1236	1476	2016			
50	2335	2189	1930	1732	1583	1706	1910	2176	2306	1910	1338	1146	1131	1126	1363	1968			
55	2314	2076	1761	1538	1374	1511	1738	2068	2299	1856	1213	1011	994	986	1225	1907			
60	2316	1945	1569	1300	1122	1278	1541	1945	2327	1785	1058	854	848	829	1049	1829			
65	2382	1808	1375	1030	848	1012	1344	1826	2463	1683	891	698	700	677	855	1702			
70	2356	1690	1207	755	597	743	1177	1720	2414	1520	709	554	551	539	670	1482			
75	1858	1466	1101	504	387	496	1097	1447	1871	1210	532	413	389	406	495	1157			
80	919	880	918	288	218	281	882	847	930	661	404	281	248	278	371	628			
85	223	244	483	122	89.9	116	440	225	254	211	161	159	131	163	165	200			
90	0.00	0.00	0.00	0.00	0.00	0.00	0.00	0.00	0.00	0.00	0.00	0.00	0.00	0.00	0.00	0.00			
95	0.00	0.00	0.00	0.00	0.00	0.00	0.00	0.00	0.00	0.00	0.00	0.00	0.00	0.00	0.00	0.00			
100	0.00	0.00	0.00	0.00	0.00	0.00	0.00	0.00	0.00	0.00	0.00	0.00	0.00	0.00	0.00	0.00			
105	0.00	0.00	0.00	0.00	0.00	0.00	0.00	0.00	0.00	0.00	0.00	0.00	0.00	0.00	0.00	0.00			
110	0.00	0.00	0.00	0.00	0.00	0.00	0.00	0.00	0.00	0.00	0.00	0.00	0.00	0.00	0.00	0.00			
115	0.00	0.00	0.00	0.00	0.00	0.00	0.00	0.00	0.00	0.00	0.00	0.00	0.00	0.00	0.00	0.00			
120	0.00	0.00	0.00	0.00	0.00	0.00	0.00	0.00	0.00	0.00	0.00	0.00	0.00	0.00	0.00	0.00			
125	0.00	0.00	0.00	0.00	0.00	0.00	0.00	0.00	0.00	0.00	0.00	0.00	0.00	0.00	0.00	0.00			
130	0.00	0.00	0.00	0.00	0.00	0.00	0.00	0.00	0.00	0.00	0.00	0.00	0.00	0.00	0.00	0.00			
135	0.00	0.00	0.00	0.00	0.00	0.00	0.00	0.00	0.00	0.00	0.00	0.00	0.00	0.00	0.00	0.00			
140	0.00	0.00	0.00	0.00	0.00	0.00	0.00	0.00	0.00	0.00	0.00	0.00	0.00	0.00	0.00	0.00			
145	0.00	0.00	0.00	0.00	0.00	0.00	0.00	0.00	0.00	0.00	0.00	0.00	0.00	0.00	0.00	0.00			
150	0.00	0.00	0.00	0.00	0.00	0.00	0.00	0.00	0.00	0.00	0.00	0.00	0.00	0.00	0.00	0.00			
155	0.00	0.00	0.00	0.00	0.00	0.00	0.00	0.00	0.00	0.00	0.00	0.00	0.00	0.00	0.00	0.00			
160	0.00	0.00	0.00	0.00	0.00	0.00	0.00	0.00	0.00	0.00	0.00	0.00	0.00	0.00	0.00	0.00			
165	0.00	0.00	0.00	0.00	0.00	0.00	0.00	0.00	0.00	0.00	0.00	0.00	0.00	0.00	0.00	0.00			
170	0.00	0.00	0.00	0.00	0.00	0.00	0.00	0.00	0.00	0.00	0.00	0.00	0.00	0.00	0.00	0.00			
175	0.00	0.00	0.00	0.00	0.00	0.00	0.00	0.00	0.00	0.00	0.00	0.00	0.00	0.00	0.00	0.00			
180	0.00	0.00	0.00	0.00	0.00	0.00	0.00	0.00	0.00	0.00	0.00	0.00	0.00	0.00	0.00	0.00			

C Range: 0 - 360DEG  
 C Interval: 22.5DEG  
 Test Speed: HIGH  
 Temperature: 25.1DEG  
 Operators: Alan Wang  
 Test Date: 18 October 2023

γ Range: 0 - 180DEG  
 γ Interval: 1.0DEG  
 Test System: EVERFINE GO-R5000\_V2 SYSTEM V2.00.416  
 Humidity: 43.8%  
 Test Distance: 2.500m [K=1.0393]  
 Remarks: