



BULB OUTDOOR WALL CYLINDER

► **DESIGN** - BULB OUTDOOR WALL CYLINDER has a modern design with single or double light directions. This E26 base fixture is made from die-cast aluminum and a tempered glass cover. The high quality reflector creates a 50° beam angle. Round and Square shape available to fit any interior/exterior installation.

► **PHOTOCELL** - The built-in Dusk to Dawn Photocell will automatically turn the fixture on/off depending on the time of day.

► **BULBS** - The fixture includes a standard E26 medium base. We recommend to use LED A19 bulb.

► **APPLICATION** - The fixture is rated for Wet Locations, making it perfect for indoor and outdoor projects such as decks, front doors, porches, patios, corridors, walkways, or any other common areas.

► **ADVANTAGES** - ASD provides a 5-year limited warranty along with ETL certification to guarantee top quality products and safety!

Catalog number	
Notes	
Type	



Finish:	White	Steel
	Bronze	Black

Model	Number of lights	Bulb type	Finish	Dimensions (LxWxH)	Option
OCL ROUND					
ASD-OCL-11-2660-WH	1 light	E26 60W max	White	4-3/8" x 6-7/16" x 7-7/8"	-
ASD-OCL-11-2660-WH-2PACK	1 light	E26 60W max	White	4-3/8" x 6-7/16" x 7-7/8"	-
ASD-OCL-11-2660-SS	1 light	E26 60W max	Stainless steel	4-3/8" x 6-7/16" x 7-7/8"	-
ASD-OCL-11-2660-BZ	1 light	E26 60W max	Oil rubbed bronze	4-3/8" x 6-7/16" x 7-7/8"	-
ASD-OCL-11-2660-BK-2PACK	1 light	E26 60W max	Black	4-3/8" x 6-7/16" x 7-7/8"	-
ASD-OCL-21-2660-WH	2 light	E26 60W max	White	4-3/8" x 6-7/16" x 11-13/16"	-
ASD-OCL-21-2660-WH-2PACK	2 light	E26 60W max	White	4-3/8" x 6-7/16" x 11-13/16"	-
ASD-OCL-21-2660-SS	2 light	E26 60W max	Stainless steel	4-3/8" x 6-7/16" x 11-13/16"	-
ASD-OCL-21-2660-BZ	2 light	E26 60W max	Oil rubbed bronze	4-3/8" x 6-7/16" x 11-13/16"	-
ASD-OCL-21-2660-BK	2 light	E26 60W max	Black	4-3/8" x 6-7/16" x 11-13/16"	-
ASD-OCL-21-2660-BK-2PACK	2 light	E26 60W max	Black	4-3/8" x 6-7/16" x 11-13/16"	-
ASD-OCLR-1A-PC-BK	1 light	E26 60W max	Black	4-3/8" x 6-7/16" x 7-7/8"	Photocell
ASD-OCL-11-2660-PC-BK	1 light	E26 60W max	Black	4-3/8" x 6-7/16" x 7-7/8"	Photocell
ASD-OCL-11-2660-PC-BK-2PACK	1 light	E26 60W max	Black	4-3/8" x 6-7/16" x 7-7/8"	Photocell
ASD-OCL-21-2660-PC-BK	2 light	E26 60W max	Black	4-3/8" x 6-7/16" x 11-13/16"	Photocell
ASD-OCL-21-2660-PC-BK-2PACK	2 light	E26 60W max	Black	4-3/8" x 6-7/16" x 11-13/16"	Photocell
OCL ROUND WITH DECORATIVE RING					
ASD-OCLR-1B-BK	1 light	E26 60W max	Black	4-3/8" x 6-9/16" x 7-15/16"	-
ASD-OCLR-2B-BK	2 light	E26 60W max	Black	4-3/8" x 6-9/16" x 11-13/16"	-
OCLS SQUARE					
ASD-OCLS-11-2660-BZ	1 light	E26 60W max	Oil rubbed bronze	4-3/8" x 5-13/16" x 7-7/8"	-
ASD-OCLS-11-2660-BK	1 light	E26 60W max	Black	4-3/8" x 5-13/16" x 7-7/8"	-
ASD-OCLS-11-2660-BK-2PACK	1 light	E26 60W max	Black	4-3/8" x 5-13/16" x 7-7/8"	-
ASD-OCLS-21-2660-BZ	2 light	E26 60W max	Oil rubbed bronze	4-3/8" x 5-13/16" x 11-13/16"	-
ASD-OCLS-21-2660-BK	2 light	E26 60W max	Black	4-3/8" x 5-13/16" x 11-13/16"	-
ASD-OCLS-11-2660-PC-BK	1 light	E26 60W max	Black	4-3/8" x 5-13/16" x 7-7/8"	Photocell
ASD-OCLS-11-2660-PC-BK-2PACK	1 light	E26 60W max	Black	4-3/8" x 5-13/16" x 7-7/8"	Photocell
ASD-OCLS-21-2660-PC-BK	2 light	E26 60W max	Black	4-3/8" x 5-13/16" x 11-13/16"	Photocell
OCLS SQUARE WITH DECORATIVE RING					
ASD-OCLS-1B-BK	1 light	E26 60W max	Black	7/16" x 5-13/16" x 7-15/16"	-
ASD-OCLS-2B-BK	2 light	E26 60W max	Black	4-3/8" x 5-13/16" x 11-13/16"	-

For most up-to-date spec sheets please refer to asd-lighting.com



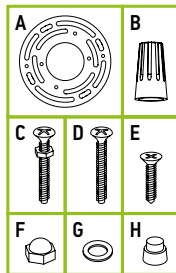
BULB OUTDOOR WALL CYLINDER

PRODUCT SPECIFICATIONS:

Construction & Materials						
Housing	Aluminum					
Lens	Glass					
Finish	White, Stainless steel, Oil rubbed bronze, Black					
Weight	ASD-OCL-11-2660-WH	1.9 lbs (0.9 kg)	ASD-OCL-21-2660-BK-2PACK	5.1 lbs (2.3 kg)	ASD-OCLS-11-2660-BK-2PACK	3.8 lbs (1.7 kg)
	ASD-OCL-11-2660-WH-2PACK	4 lbs (1.8 kg)	ASD-OCLR-1A-PC-BK	0.9 lbs (0.4 kg)	ASD-OCLS-21-2660-BZ	2.7 lbs (1.2 kg)
	ASD-OCL-11-2660-SS	1.9 lbs (0.9 kg)	ASD-OCL-11-2660-PC-BK	1.9 lbs (0.9 kg)	ASD-OCLS-11-2660-BK	
	ASD-OCL-11-2660-BZ		ASD-OCL-11-2660-PC-BK-2PACK	4 lbs (1.8 kg)	ASD-OCLS-11-2660-PC-BK	2 lbs (0.9 kg)
	ASD-OCL-11-2660-BK-2PACK	4 lbs (1.8 kg)	ASD-OCL-21-2660-PC-BK	2.5 lbs (1.1 kg)	ASD-OCLS-11-2660-PC-BK-2PACK	3.8 lbs (1.7 kg)
	ASD-OCL-21-2660-WH	2.5 lbs (1.1 kg)	ASD-OCL-21-2660-PC-BK-2PACK	5.1 lbs (2.3 kg)	ASD-OCLS-21-2660-PC-BK	2.7 lbs (1.2 kg)
	ASD-OCL-21-2660-WH-2PACK	5.3 lbs (2.4 kg)	ASD-OCLR-1B-BK	1.9 lbs (0.9 kg)	ASD-OCLS-1B-BK	1.8 lbs (0.8 kg)
	ASD-OCL-21-2660-SS	2.5 lbs (1.1 kg)	ASD-OCLR-2B-BK	2.4 lbs (1.1 kg)	ASD-OCLS-2B-BK	2.5 lbs (1.1 kg)
	ASD-OCL-21-2660-BZ		ASD-OCLS-11-2660-BZ	2 lbs (0.9 kg)		
ASD-OCL-21-2660-BK	ASD-OCLS-11-2660-BK					
Environmental system						
Work environment	Suitable for Wet Locations					
Operating temperature	-40°F to 113°F (-40°C to 45°C)		for PC models: -4°F to 113°F (-20°C to 45°C)			
Electrical system						
Input voltage	120 V					
Light source type	Incandescent/LED/CFL bulb					
Bulb base type	E26 medium					
Maximum bulb wattage	60W		for 21-PC models: 40W			
Maximum wattage	ASD-OCL-11-2660-WH	60W	ASD-OCL-21-2660-BK-2PACK	120W	ASD-OCLS-11-2660-BK-2PACK	60W
	ASD-OCL-11-2660-WH-2PACK		ASD-OCLR-1A-PC-BK	60W	ASD-OCLS-21-2660-BZ	120W
	ASD-OCL-11-2660-SS		ASD-OCL-11-2660-PC-BK		ASD-OCLS-21-2660-BK	
	ASD-OCL-11-2660-BZ		ASD-OCL-11-2660-PC-BK-2PACK	ASD-OCLS-11-2660-PC-BK	60W	
	ASD-OCL-11-2660-BK-2PACK	120W	ASD-OCL-21-2660-PC-BK	80W	ASD-OCLS-11-2660-PC-BK-2PACK	80W
	ASD-OCL-21-2660-WH		ASD-OCL-21-2660-PC-BK-2PACK	60W	ASD-OCLS-21-2660-PC-BK	120W
	ASD-OCL-21-2660-WH-2PACK		ASD-OCLR-1B-BK		ASD-OCLS-1B-BK	
	ASD-OCL-21-2660-SS		ASD-OCLR-2B-BK	120W	ASD-OCLS-2B-BK	120W
	ASD-OCL-21-2660-BZ		ASD-OCLS-11-2660-BZ	60W		
	ASD-OCL-21-2660-BK		ASD-OCLS-11-2660-BK			
Surge protection DM/CM	1.25 kV / 1.25 kV					
Regular and voluntary certifications						
5-year limited warranty						
cETLus certified 4001256						

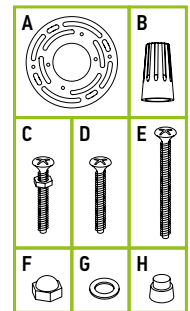
PACKAGE CONTENTS:

Description	Q-ty
Bulb Outdoor Wall Cylinder	1 (2 for 2 pack)
Mounting plate (A)	1
Wire nut (B)	3
Mounting screw (C)	2
Outlet box screw (D)	2
Glass cover screw (E) only for OCLS models	4 (8 for OCLS-21)
Decorative nut (F)	2
Waterproof gasket (G)	2
Photocell cap (H) only for PC models	1
Box	1



PACKAGE CONTENTS FOR OCL-B MODELS:

Description	Q-ty
Bulb Outdoor Wall Cylinder	1
Mounting plate (A)	1
Wire nut (B)	3
Mounting screw (C)	2
Outlet box screw (D)	2
Glass cover screw (E)	3 for OCLR-1B, 6 for OCLR-2B, 4 for OCLS-1B, 8 for OCLS-2B
Decorative nut (F)	2
Waterproof gasket (G)	2
Photocell cap (H) only for PC models	1
Box	1



BUILT-IN PHOTOCELL INFORMATION

Specifications	Model: MD.EP-120R
Input power	120 Vac, 60 Hz
Light level to turn ON	30 - 150 lux (2.8 - 14 fc)
Light level to turn OFF	200 - 800 lux (18.6-74.4 fc)
Operating temperature	-4°F to 113°F (-20°C to 45°C)

The dusk-to-dawn sensor automatically turns the fixture off during daylight hours.

For most up-to-date spec sheets please refer to asd-lighting.com

ASD LIGHTING CORP

E-mail: orders@asd-lighting.com | Web site: www.asd-lighting.com





BULB OUTDOOR WALL CYLINDER

INSTALLATION GUIDE

IMPORTANT SAFETY INFORMATION:

Please read all the instructions below before installation.

- ▶ Make sure that the supply voltage corresponds to the rated product voltage.
- ▶ The product must be installed by a qualified electrician in accordance with the National Electrical Code and corresponding local codes.
- ▶ If the product is damaged, do not use it.

⚠ WARNING

RISK OF PERSONAL INJURY – READ and follow all WARNINGS and installation instructions. Keep or give to the owner for future reference.

Risk of cuts: Wear gloves to prevent cuts or abrasions when removing from carton, handling, installing, and maintaining this product.

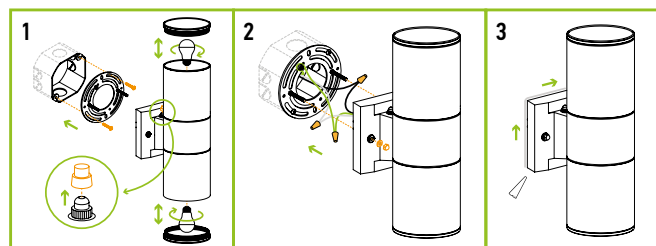
Risk of electric shock: This product must be installed in accordance with the applicable installation code by a person familiar with the construction and operation of the product and the hazards involved.

Risk of Fire: Minimum 194°F supply conductors. Consult a qualified electrician to ensure correct branch circuit conductor.

ASD® assumes no responsibility for claims arising out of improper or careless installation or handling of this product.

INSTALLATION STEPS:

1. Remove the glass lid, install the bulbs (A19/60W max) and close the lid. In models with photocell option remove the photocell cap to make the dusk-to-dawn sensor operate. Screw the two mounting screws onto the mounting plate. Attach the mounting plate to the outlet box using the screws. Make sure the threads of the mounting screws are facing out when the mounting plate is attached to the outlet box.
2. Connect the wires: Black to Black, White to White, Ground to Ground. Secure the connection with wire nuts. Place the fixture base on the wall by aligning the protruding mounting screws through the holes on the wall plate. Put a waterproof gasket on each mounting screw. Tighten the fixture to the wall using two decorative nuts.
3. For outdoor locations please use silicone (not included) shown in the picture below.



* The fixture must be mounted vertically with the photocell sensor facing up.

ORDERING INFORMATION

Model	UPC	Pcs. per carton	Carton size	Carton weight	GTIN 14
OCLR ROUND					
ASD-OCL-11-2660-WH	810050730617	6	16.7" x 15.4" x 9.7"	16.7 lbs	30810050730618
ASD-OCL-11-2660-WH-2PACK	810128111638	3	24.4" x 11.4" x 9.8"	16.1 lbs	10810128111635
ASD-OCL-11-2660-SS	810050730624	6	16.7" x 15.4" x 9.7"	16.7 lbs	30810050730625
ASD-OCL-11-2660-BZ	810050730600	6	16.7" x 15.4" x 9.7"	16.7 lbs	30810050730601
ASD-OCL-11-2660-BK-2PACK	810128112260	3	24.4" x 11.4" x 9.8"	16.1 lbs	10810128112267
ASD-OCL-21-2660-WH	810050730655	6	16.7" x 15.4" x 13.6"	19.7 lbs	30810050730656
ASD-OCL-21-2660-WH-2PACK	810128114622	3	24.4" x 11.4" x 13.8"	19.7 lbs	10810128114629
ASD-OCL-21-2660-SS	810050730662	6	16.7" x 15.4" x 13.6"	19.7 lbs	30810050730663
ASD-OCL-21-2660-BZ	810050730648	6	16.7" x 15.4" x 13.6"	19.7 lbs	30810050730649
ASD-OCL-21-2660-BK	810050730631	6	16.7" x 15.4" x 13.6"	19.7 lbs	30810050730632
ASD-OCL-21-2660-BK-2PACK	810128113861	3	24.4" x 11.4" x 13.8"	19.7 lbs	10810128113868
ASD-OCLR-1A-PC-BK	810128116343	2	11.4" x 7.9" x 9.7"	2 lbs	10810128116340
ASD-OCL-11-2660-PC-BK	810050736831	6	16.7" x 15.4" x 9.7"	16.7 lbs	30810050736832
ASD-OCL-11-2660-PC-BK-2PACK	810128111645	3	24.4" x 11.4" x 9.8"	16.1 lbs	10810128111642
ASD-OCL-21-2660-PC-BK	810050736848	6	16.7" x 15.4" x 13.6"	19.7 lbs	30810050736849
ASD-OCL-21-2660-PC-BK-2PACK	810128113878	3	24.4" x 11.4" x 13.8"	19.7 lbs	10810128113875
OCLR ROUND WITH DECORATIVE RING					
ASD-OCLR-1B-BK	810128115148	2	11.4" x 7.9" x 9.7"	4.4 lbs	10810128115145
ASD-OCLR-2B-BK	810128115155	2	11.4" x 7.9" x 13.6"	6.5 lbs	10810128115152
OCLS SQUARE					
ASD-OCLS-11-2660-BZ	810050736862	6	16.7" x 15.4" x 9.8"	15.5 lbs	30810050736863
ASD-OCLS-11-2660-BK	810050736855	6	16.7" x 15.4" x 9.8"	15.5 lbs	30810050736856
ASD-OCLS-11-2660-BK-2PACK	810128112499	3	22.1" x 11" x 9.8"	14.3 lbs	10810128112496
ASD-OCLS-21-2660-BZ	810050736886	6	16.7" x 15.4" x 12.2"	17.6 lbs	30810050736887
ASD-OCLS-21-2660-BK	810050736879	6	16.7" x 15.4" x 12.2"	17.6 lbs	30810050736870
ASD-OCLS-11-2660-PC-BK	810050736893	6	16.7" x 15.4" x 9.8"	15.5 lbs	30810050736894
ASD-OCLS-11-2660-PC-BK-2PACK	810128112505	3	22.1" x 11" x 9.8"	14.3 lbs	10810128112502
ASD-OCLS-21-2660-PC-BK	810050736909	6	16.7" x 15.4" x 12.2"	17.6 lbs	30810050736900
OCLS SQUARE WITH DECORATIVE RING					
ASD-OCLS-1B-BK	810128115162	2	11.4" x 7.9" x 9.8"	4.9 lbs	10810128115169
ASD-OCLS-2B-BK	810128115179	2	11.4" x 7.9" x 12.2"	6.4 lbs	10810128115176

For most up-to-date spec sheets please refer to asd-lighting.com