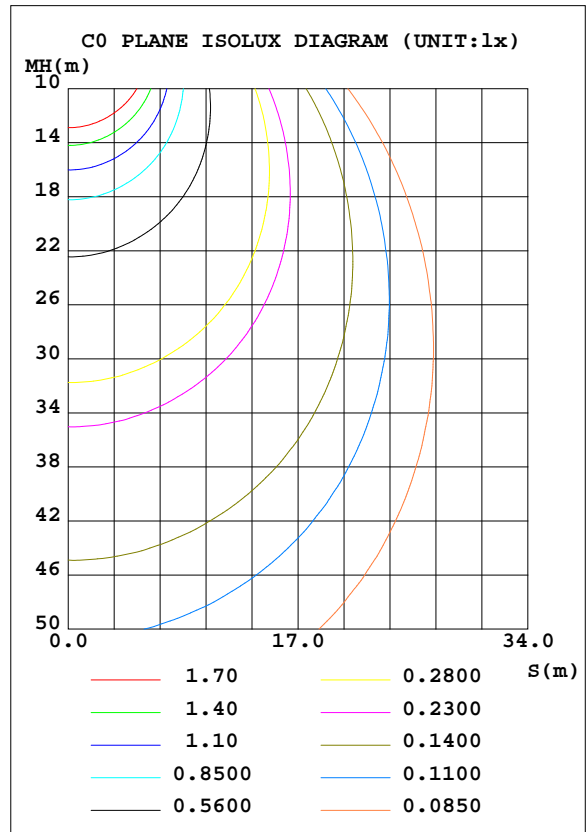
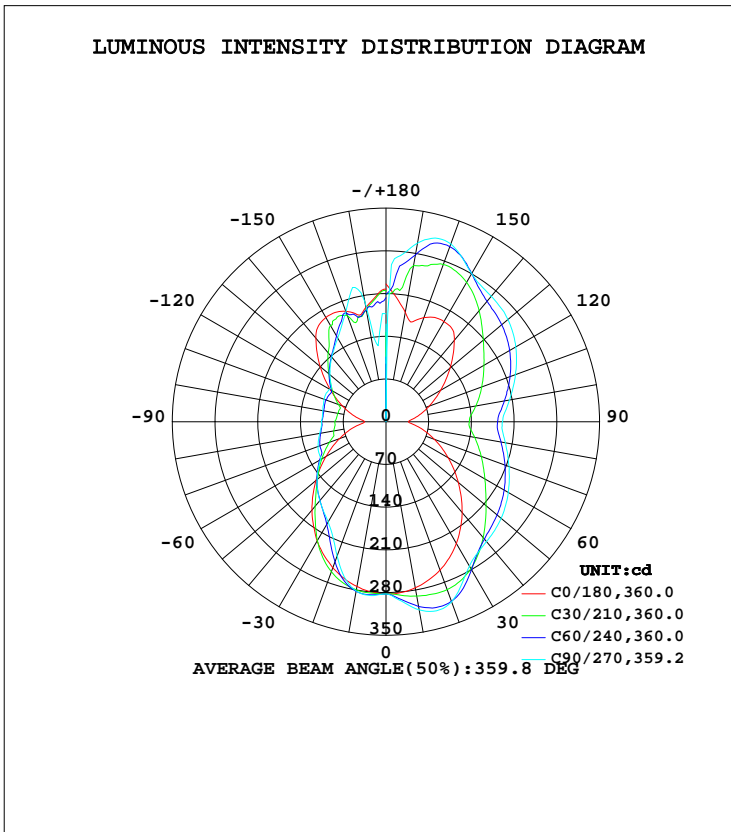


LUMINAIRE PHOTOMETRIC TEST REPORT

Test:U:120.0V I:0.2849A P:33.29W PF:0.9738 Freq:60.00Hz Lamp Flux:2108.39x1 lm		
NAME:ASD-LWS27C-48D36CCBK	TYPE:LED	WEIGHT:
SPEC.:5000K	DIM.:	SERIAL No.:
MFR.: ASD Lighting Corp	SUR.:	Shielding Angle:

DATA OF LAMP		PHOTOMETRIC DATA				Eff: 63.33 lm/W
MODEL	LWS27C-48D36CC-BK	I _{max} (cd)	320.7	S/MH(C0/180)	1.20	
NOMINAL POWER(W)	36	LOR(%)	100.0	S/MH(C90/270)	1.02	
RATED VOLTAGE(V)	120-277	TOTAL FLUX(lm)	2108.4	η UP, DN(C0-180)	30.5, 30.6	
NOMINAL FLUX(lm)	2108.39	CIE CLASS	DIFFUSE	η UP, DN(C180-360)	17.8, 21.1	
LAMPS INSIDE	1	η up(%)	48.2	CIBSE SHR NOM	1.25	
TEST VOLTAGE(V)	120	η down(%)	51.8	CIBSE SHR MAX	1.35	



C Range: 0 - 360DEG
 C Interval: 15.0DEG
 Test Speed: HIGH
 Temperature: 24.8DEG
 Operators: Alan Wang
 Test Date: 22 October 2023

γ Range: 0 - 180DEG
 γ Interval: 1.0DEG
 Test System: EVERFINE GO-R5000_V2 SYSTEM V2.00.416
 Humidity: 42.9%
 Test Distance: 2.500m [K=1.0393]
 Remarks:

ZONAL FLUX DIAGRAM

ZONAL FLUX DIAGRAM:

γ	C0	C45	C90	C135	C180	C225	C270	C315	γ	Φ zone	Φ total	%lum,lamp
10	276.3	299.4	312.8	298.5	274.1	281.6	281.5	282.9	0- 10	27.39	27.39	1.3,1.3
20	258.7	306.9	314.2	303.6	254.8	254.8	234.2	256.3	10- 20	80.18	107.6	5.1,5.1
30	230.4	285.2	273.4	279.0	225.5	205.5	189.5	207.6	20- 30	118.5	226.0	10.7,10.7
40	194.3	249.2	256.3	242.1	188.8	169.5	168.7	171.3	30- 40	140.0	366.0	17.4,17.4
50	154.9	225.8	246.1	221.1	149.9	146.6	147.4	147.4	40- 50	151.5	517.5	24.5,24.5
60	117.5	209.8	231.4	207.7	113.4	125.2	124.1	125.5	50- 60	153.6	671.1	31.8,31.8
70	84.42	193.4	214.6	193.9	81.34	106.4	118.5	106.7	60- 70	148.6	819.7	38.9,38.9
80	56.21	177.1	198.7	180.2	53.65	102.6	110.4	102.6	70- 80	140.8	960.5	45.6,45.6
90	36.82	168.2	190.9	172.7	35.32	99.69	106.0	98.82	80- 90	131.2	1092	51.8,51.8
100	52.46	181.5	205.6	185.9	51.79	96.77	105.2	95.12	90-100	130.9	1223	58,58
110	75.49	199.1	225.7	202.7	75.97	95.09	107.8	93.70	100-110	138.0	1361	64.5,64.5
120	103.4	215.5	245.5	217.8	105.5	103.8	106.8	101.9	110-120	143.0	1504	71.3,71.3
130	137.2	229.7	261.0	230.7	140.8	121.2	119.9	119.9	120-130	144.6	1648	78.2,78.2
140	174.3	249.1	268.6	248.5	178.7	140.9	138.3	140.3	130-140	141.1	1789	84.9,84.9
150	189.7	278.7	280.7	278.4	197.4	167.2	158.5	169.7	140-150	128.9	1918	91,91
160	181.6	295.1	310.3	283.4	192.6	183.2	192.0	207.4	150-160	104.8	2023	95.9,95.9
170	182.6	268.9	297.1	222.0	190.5	189.8	199.8	221.2	160-170	65.29	2088	99,99
180	225.9	205.0	95.70	198.2	217.6	209.4	176.9	183.1	170-180	20.11	2108	100,100
DEG	LUMINOUS INTENSITY:cd									UNIT:lm		

Conical surface Flux(90deg): 440.92 lm

%lum = 20.9%

%lamp = 20.9%

Conical surface Flux(120deg): 671.09 lm

%lum = 31.8%

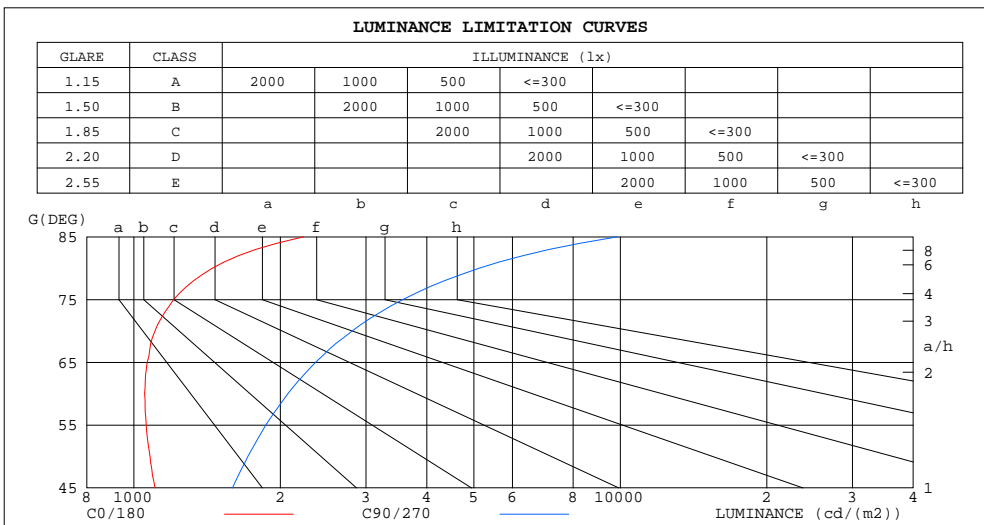
%lamp = 31.8%

C Range: 0 - 360DEG
 C Interval: 15.0DEG
 Test Speed: HIGH
 Temperature: 24.8DEG
 Operators: Alan Wang
 Test Date: 22 October 2023

γ Range: 0 - 180DEG
 γ Interval: 1.0DEG
 Test System: EVERFINE GO-R5000_V2 SYSTEM V2.00.416
 Humidity: 42.9%
 Test Distance: 2.500m [K=1.0393]
 Remarks:

LUMINANCE LIMITATION CURVES

Test:U:120.0V I:0.2849A P:33.29W PF:0.9738 Freq:60.00Hz Lamp Flux:2108.39x1 lm		
NAME:	TYPE:LED	WEIGHT:
SPEC.:ASD-LWS27C-48D36CCBK_5000K	DIM.:	SERIAL No.:
MFR.: ASD Lighting Corp	SUR.:	Shielding Angle:



LUMINANCE cd/(m2)		
G (DEG)	C0/180	C90/270
85	2232	9869
80	1450	5126
75	1207	3573
70	1106	2811
65	1065	2363
60	1052	2073
55	1060	1867
50	1080	1715
45	1105	1595

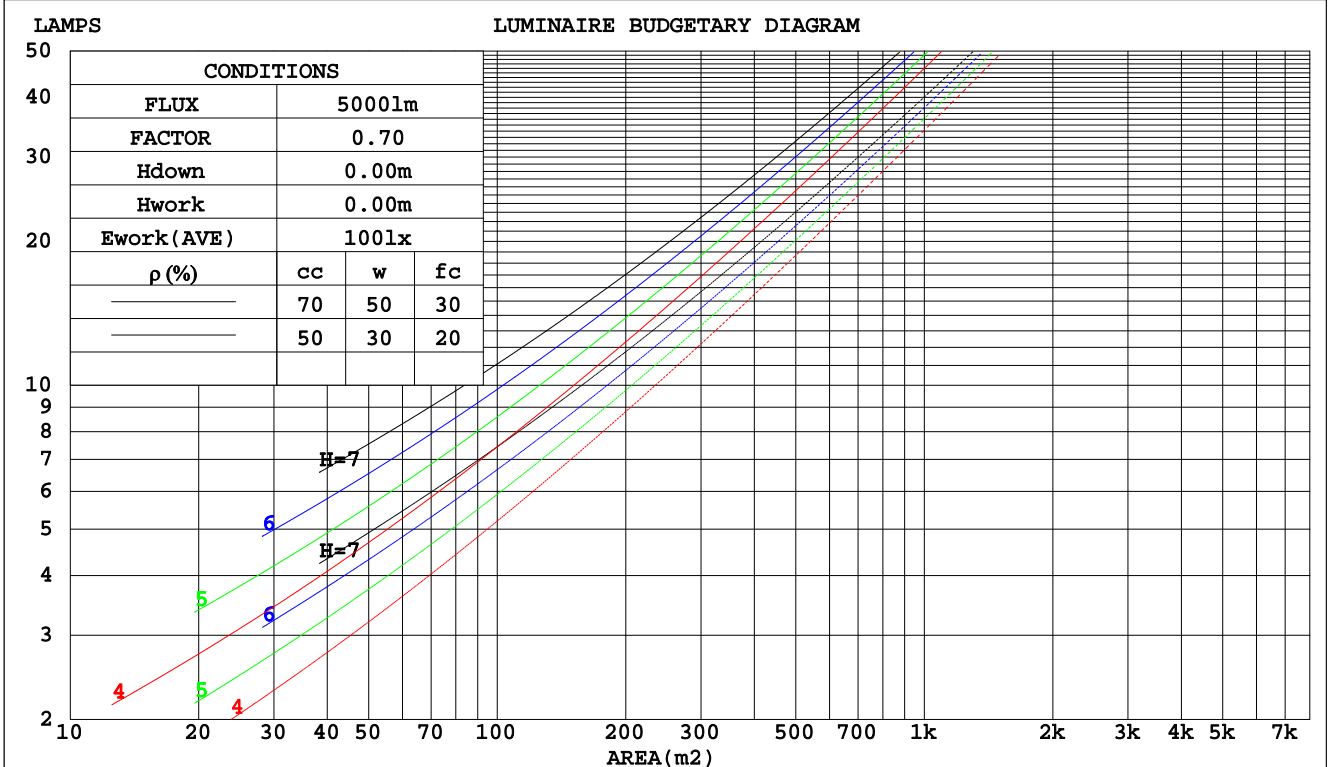
C Range: 0 - 360DEG
 C Interval: 15.0DEG
 Test Speed: HIGH
 Temperature: 24.8DEG
 Operators: Alan Wang
 Test Date: 22 October 2023

γ Range: 0 - 180DEG
 γ Interval: 1.0DEG
 Test System: EVERFINE GO-R5000_V2 SYSTEM V2.00.416
 Humidity: 42.9%
 Test Distance: 2.500m [K=1.0393]
 Remarks:

CU AND LUMINAIRE BUDGETARY ESTIMATE DIAGRAM

Test:U:120.0V I:0.2849A P:33.29W PF:0.9738 Freq:60.00Hz Lamp Flux:2108.39x1 lm		
NAME:	TYPE:LED	WEIGHT:
SPEC.:ASD-LWS27C-48D36CCBK_5000K	DIM.:	SERIAL No.:
MFR.: ASD Lighting Corp	SUR.:	Shielding Angle:

pcc	80%			70%			50%			30%			10%			0
	50%	30%	10%	50%	30%	10%	50%	30%	10%	50%	30%	10%	50%	30%	10%	0
pw																0
pfc	20%			20%			20%			20%			20%			0
RCR	RCR:Room Cavity Ratio						Coefficients of Utilization(CU)									
0.0	1.08	1.08	1.08	.99	.99	.99	.84	.84	.84	.70	.70	.70	.58	.58	.58	.52
1.0	.90	.85	.80	.83	.79	.75	.70	.67	.64	.58	.55	.53	.47	.45	.43	.38
2.0	.77	.70	.64	.71	.65	.59	.60	.55	.51	.49	.46	.43	.40	.37	.35	.30
3.0	.67	.59	.52	.62	.55	.49	.52	.46	.42	.43	.39	.35	.35	.31	.29	.24
4.0	.59	.50	.44	.54	.47	.41	.46	.40	.35	.38	.33	.29	.31	.27	.24	.20
5.0	.52	.44	.37	.48	.40	.35	.41	.35	.30	.34	.29	.25	.27	.24	.21	.17
6.0	.47	.38	.32	.43	.35	.30	.37	.30	.26	.30	.26	.22	.25	.21	.18	.15
7.0	.42	.34	.28	.39	.31	.26	.33	.27	.23	.28	.23	.19	.23	.19	.16	.13
8.0	.38	.30	.24	.35	.28	.23	.30	.24	.20	.25	.21	.17	.21	.17	.14	.12
9.0	.35	.27	.22	.32	.25	.20	.28	.22	.18	.23	.19	.15	.19	.15	.13	.11
10.0	.32	.24	.19	.30	.23	.18	.25	.20	.16	.21	.17	.14	.18	.14	.12	.09



C Range: 0 - 360DEG
 C Interval: 15.0DEG
 Test Speed: HIGH
 Temperature: 24.8DEG
 Operators: Alan Wang
 Test Date: 22 October 2023

γ Range: 0 - 180DEG
 γ Interval: 1.0DEG
 Test System: EVERFINE GO-R5000_V2 SYSTEM V2.00.416
 Humidity: 42.9%
 Test Distance: 2.500m [K=1.0393]
 Remarks:

WEC AND CCEC

Test:U:120.0V I:0.2849A P:33.29W PF:0.9738 Freq:60.00Hz Lamp Flux:2108.39x1 lm		
NAME:	TYPE:LED	WEIGHT:
SPEC.:ASD-LWS27C-48D36CCBK_5000K	DIM.:	SERIAL No.:
MFR.: ASD Lighting Corp	SUR.:	Shielding Angle:

ρcc	80%			70%			50%			30%			10%			0
ρw	50%	30%	10%	50%	30%	10%	50%	30%	10%	50%	30%	10%	50%	30%	10%	0
ρfc	20%			20%			20%			20%			20%			0
RCR	RCR:Room Cavity Ratio						Wall Exitance Coefficients(WEC)									
0.0																
1.0	.356	.202	.064	.334	.191	.061	.293	.168	.054	.256	.148	.047	.221	.128	.041	
2.0	.307	.168	.052	.288	.158	.049	.250	.139	.043	.216	.121	.038	.184	.104	.033	
3.0	.273	.145	.044	.255	.137	.041	.221	.120	.036	.190	.104	.032	.161	.089	.028	
4.0	.247	.128	.038	.230	.120	.036	.199	.106	.032	.170	.091	.028	.143	.078	.024	
5.0	.225	.115	.033	.210	.108	.031	.181	.094	.028	.154	.081	.024	.129	.069	.021	
6.0	.207	.104	.030	.193	.097	.028	.166	.085	.025	.141	.074	.022	.118	.062	.018	
7.0	.191	.094	.027	.178	.089	.025	.154	.078	.022	.131	.067	.019	.109	.057	.017	
8.0	.177	.087	.024	.166	.081	.023	.143	.071	.020	.121	.061	.018	.101	.052	.015	
9.0	.166	.080	.022	.155	.075	.021	.133	.066	.019	.113	.057	.016	.094	.048	.014	
10.0	.155	.074	.021	.145	.070	.020	.125	.061	.017	.106	.053	.015	.089	.045	.013	

ρcc	80%			70%			50%			30%			10%			0
ρw	50%	30%	10%	50%	30%	10%	50%	30%	10%	50%	30%	10%	50%	30%	10%	0
ρfc	20%			20%			20%			20%			20%			0
RCR	RCR:Room Cavity Ratio						Ceiling Cavity Exitance Coefficients(CCEC)									
0.0	.558	.558	.558	.477	.477	.477	.325	.325	.325	.187	.187	.187	.060	.060	.060	
1.0	.554	.526	.501	.474	.452	.431	.324	.311	.298	.187	.180	.173	.060	.058	.056	
2.0	.547	.505	.469	.469	.434	.405	.321	.301	.283	.185	.175	.166	.059	.057	.054	
3.0	.540	.489	.449	.463	.422	.389	.318	.293	.273	.184	.171	.161	.059	.056	.053	
4.0	.533	.477	.435	.457	.413	.378	.314	.288	.266	.182	.168	.158	.059	.055	.052	
5.0	.526	.468	.426	.451	.405	.370	.311	.283	.262	.180	.166	.155	.058	.054	.051	
6.0	.519	.461	.419	.446	.399	.365	.308	.279	.258	.179	.164	.153	.058	.054	.051	
7.0	.512	.455	.414	.441	.394	.361	.305	.276	.256	.177	.163	.152	.057	.053	.050	
8.0	.506	.449	.410	.436	.390	.358	.302	.274	.254	.175	.161	.151	.057	.053	.050	
9.0	.500	.445	.408	.431	.386	.355	.299	.271	.252	.174	.160	.151	.056	.053	.050	
10.0	.495	.441	.405	.427	.383	.354	.296	.270	.251	.173	.159	.150	.056	.052	.050	

C Range: 0 - 360DEG
 C Interval: 15.0DEG
 Test Speed: HIGH
 Temperature: 24.8DEG
 Operators: Alan Wang
 Test Date: 22 October 2023

γ Range: 0 - 180DEG
 γ Interval: 1.0DEG
 Test System: EVERFINE GO-R5000_V2 SYSTEM V2.00.416
 Humidity: 42.9%
 Test Distance: 2.500m [K=1.0393]
 Remarks:

UGR(Unified Glare Rating) Table

Test:U:120.0V I:0.2849A P:33.29W PF:0.9738 Freq:60.00Hz Lamp Flux:2108.39x1 lm										
NAME:					TYPE:LED			WEIGHT:		
SPEC.:ASD-LWS27C-48D36CCBK_5000K					DIM.:			SERIAL No.:		
MFR.: ASD Lighting Corp					SUR.:			Shielding Angle:		
ceiling/cavity	0.7	0.7	0.5	0.5	0.3	0.7	0.7	0.5	0.5	0.3
walls	0.5	0.3	0.5	0.3	0.3	0.5	0.3	0.5	0.3	0.3
working plane	0.2	0.2	0.2	0.2	0.2	0.2	0.2	0.2	0.2	0.2
Room dimensions	Viewed crosswise					Viewed endwise				
x = 2H y = 2H	10.7	11.7	11.6	12.6	13.7	12.8	13.8	13.6	14.7	15.8
3H	12.6	13.5	13.4	14.4	15.5	15.6	16.6	16.5	17.5	18.6
4H	13.5	14.4	14.4	15.2	16.4	17.2	18.1	18.1	19.0	20.2
6H	14.4	15.2	15.3	16.1	17.3	19.0	19.9	19.9	20.8	21.9
8H	14.8	15.6	15.7	16.5	17.7	20.0	20.8	21.0	21.8	22.9
12H	15.2	16.0	16.2	16.9	18.1	21.2	22.0	22.1	22.9	24.1
4H 2H	12.1	13.0	13.0	13.8	15.0	13.5	14.3	14.3	15.2	16.4
3H	14.3	15.0	15.2	16.0	17.2	16.5	17.3	17.5	18.2	19.4
4H	15.5	16.1	16.4	17.1	18.3	18.3	19.0	19.3	20.0	21.2
6H	16.6	17.2	17.5	18.2	19.4	20.3	20.9	21.3	21.9	23.1
8H	17.1	17.7	18.1	18.7	19.9	21.4	22.0	22.4	23.0	24.2
12H	17.7	18.2	18.6	19.2	20.4	22.7	23.2	23.7	24.2	25.5
8H 4H	16.7	17.3	17.7	18.2	19.5	18.8	19.4	19.8	20.4	21.6
6H	18.3	18.8	19.3	19.8	21.0	21.1	21.6	22.1	22.6	23.9
8H	19.1	19.5	20.1	20.5	21.8	22.4	22.9	23.4	23.9	25.2
12H	19.9	20.3	20.9	21.3	22.6	24.0	24.3	25.0	25.3	26.7
12H 4H	17.0	17.6	18.0	18.5	19.8	18.9	19.4	19.9	20.4	21.7
6H	18.9	19.3	19.9	20.3	21.6	21.3	21.7	22.3	22.7	24.0
8H	19.9	20.3	20.9	21.3	22.6	22.8	23.1	23.8	24.1	25.5
Variations with the observer position at spacings:										
S = 1.0H	+ 0.1 / - 0.1					+ 0.1 / - 0.1				
1.5H	+ 0.2 / - 0.3					+ 0.2 / - 0.3				
2.0H	+ 0.3 / - 0.5					+ 0.3 / - 0.4				

CIE Pub.117, 2108 lm Total Lamp Luminous Flux Corrected (8log(F/F0) = 2.6)
 Area: 0.22326 m2

C Range: 0 - 360DEG
 C Interval: 15.0DEG
 Test Speed: HIGH
 Temperature: 24.8DEG
 Operators: Alan Wang
 Test Date: 22 October 2023

γ Range: 0 - 180DEG
 γ Interval: 1.0DEG
 Test System: EVERFINE GO-R5000_V2 SYSTEM V2.00.416
 Humidity: 42.9%
 Test Distance: 2.500m [K=1.0393]
 Remarks:

UTILIZATION FACTORS TABLE

Test:U:120.0V I:0.2849A P:33.29W PF:0.9738 Freq:60.00Hz Lamp Flux:2108.39x1 lm		
NAME:	TYPE:LED	WEIGHT:
SPEC.:ASD-LWS27C-48D36CCBK_5000K	DIM.:	SERIAL No.:
MFR.: ASD Lighting Corp	SUR.:	Shielding Angle:

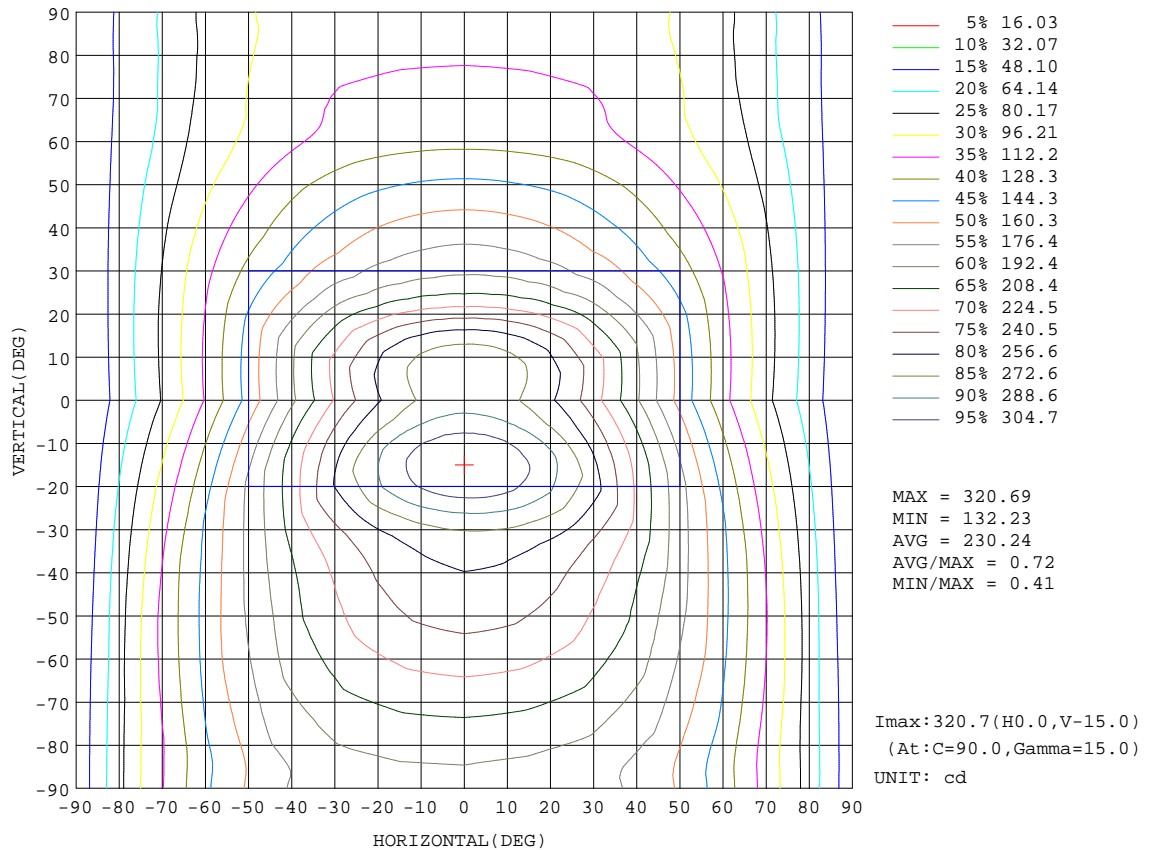
REFLECTANCE										
Ceiling	0.8	0.8	0.8	0.7	0.7	0.7	0.5	0.5	0.5	0
Walls	0.7	0.5	0.3	0.7	0.5	0.3	0.7	0.5	0.3	0
Working plane	0.2	0.2	0.2	0.2	0.2	0.2	0.2	0.2	0.2	0
ROOM INDEX	UTILIZATION FACTORS(PERCENT) $k(RI) \times RCR = 5$									
k = 0.60	41	29	22	39	28	21	35	25	20	13
0.80	50	37	29	47	35	28	41	32	26	16
1.00	57	44	36	53	42	34	47	39	31	20
1.25	64	51	42	59	48	40	52	43	36	23
1.50	69	56	48	64	53	45	55	47	41	25
2.00	76	65	56	71	61	53	61	53	47	29
2.50	81	70	62	75	66	59	64	57	51	32
3.00	84	75	67	78	70	63	67	61	55	34
4.00	89	81	74	83	76	70	70	65	60	37
5.00	92	85	79	85	79	74	73	68	64	39
ROOM INDEX	UF(total)									Direct
According to DIN EN 13032-2 2004			Suspended				SHRNOM = 1.25			

C Range: 0 - 360DEG
 C Interval: 15.0DEG
 Test Speed: HIGH
 Temperature: 24.8DEG
 Operators: Alan Wang
 Test Date: 22 October 2023

γ Range: 0 - 180DEG
 γ Interval: 1.0DEG
 Test System: EVERFINE GO-R5000_V2 SYSTEM V2.00.416
 Humidity: 42.9%
 Test Distance: 2.500m [K=1.0393]
 Remarks:

ISOCANDELA DIAGRAM

Test:U:120.0V I:0.2849A P:33.29W PF:0.9738 Freq:60.00Hz Lamp Flux:2108.39x1 lm		
NAME:	TYPE:LED	WEIGHT:
SPEC.:ASD-LWS27C-48D36CCBK_5000K	DIM.:	SERIAL No.:
MFR.: ASD Lighting Corp	SUR.:	Shielding Angle:

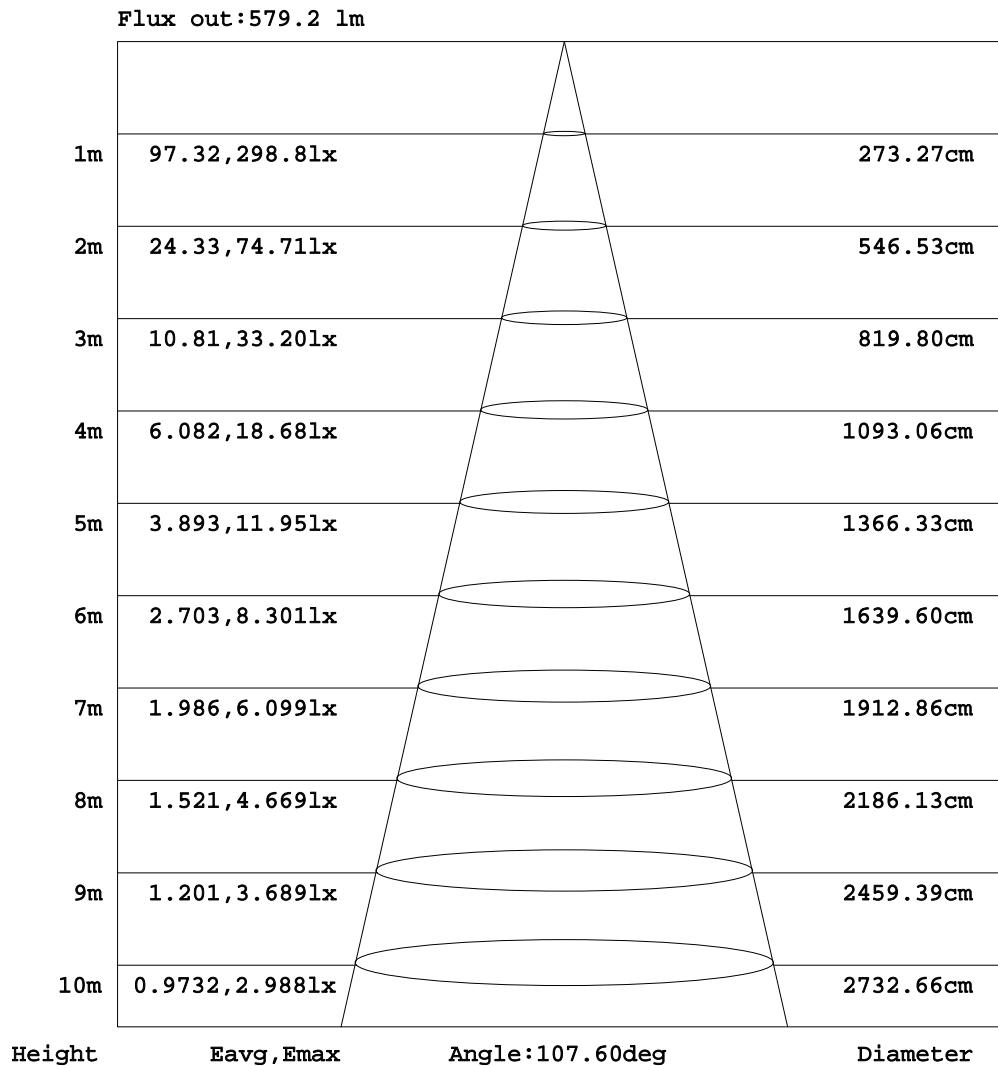


C Range: 0 - 360DEG
 C Interval: 15.0DEG
 Test Speed: HIGH
 Temperature: 24.8DEG
 Operators: Alan Wang
 Test Date: 22 October 2023

γ Range: 0 - 180DEG
 γ Interval: 1.0DEG
 Test System: EVERFINE GO-R5000_V2 SYSTEM V2.00.416
 Humidity: 42.9%
 Test Distance: 2.500m [K=1.0393]
 Remarks:

AAI Figure

Test:U:120.0V I:0.2849A P:33.29W PF:0.9738 Freq:60.00Hz Lamp Flux:2108.39x1 lm		
NAME:	TYPE:LED	WEIGHT:
SPEC.:ASD-LWS27C-48D36CCBK_5000K	DIM.:	SERIAL No.:
MFR.: ASD Lighting Corp	SUR.:	Shielding Angle:



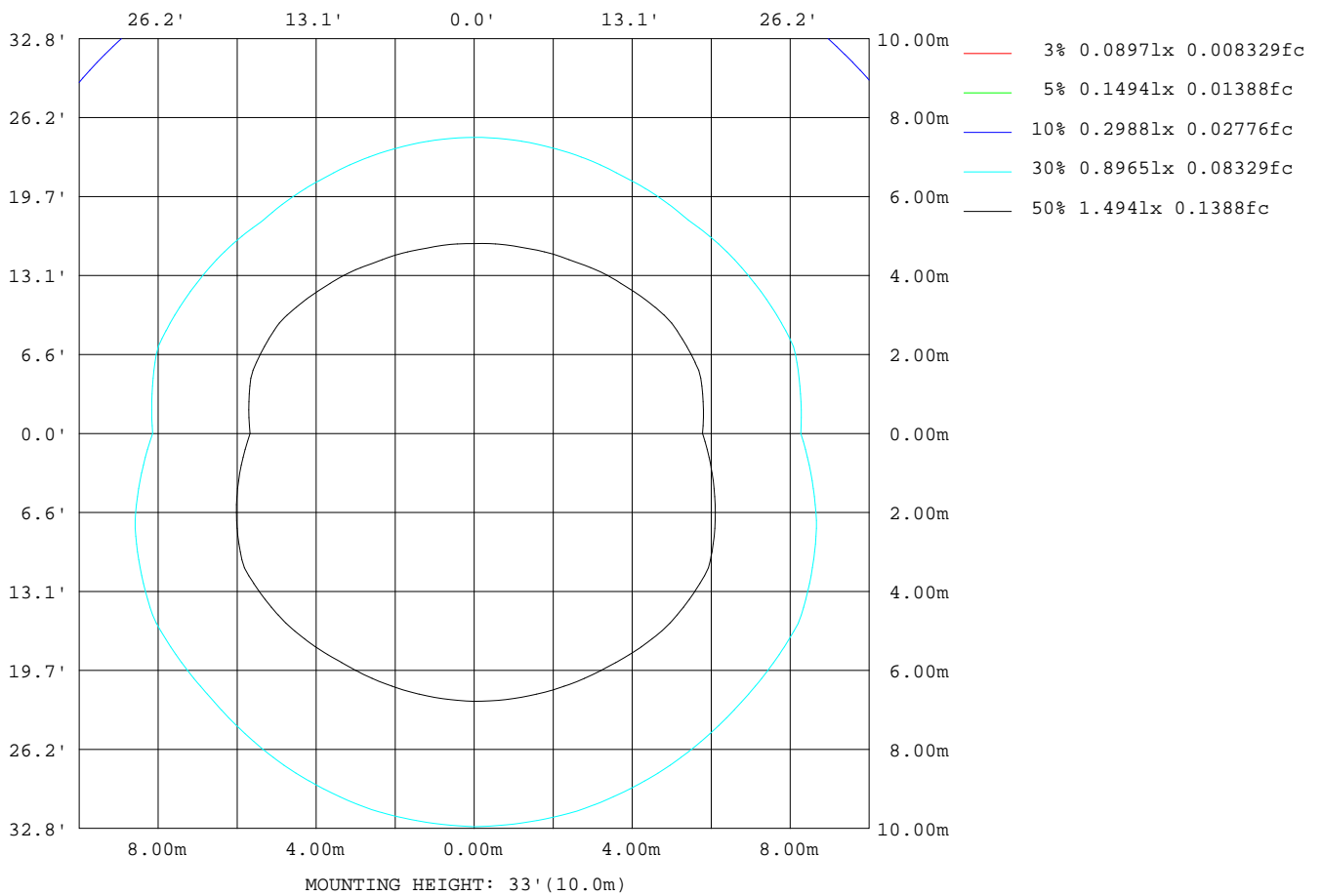
Note:The Curves indicate the illuminated area and the average illumination when the luminaire is at different distance.

C Range: 0 - 360DEG
 C Interval: 15.0DEG
 Test Speed: HIGH
 Temperature: 24.8DEG
 Operators:Alan Wang
 Test Date:22 October 2023

γ Range: 0 - 180DEG
 γ Interval: 1.0DEG
 Test System:EVERFINE GO-R5000_V2 SYSTEM V2.00.416
 Humidity: 42.9%
 Test Distance:2.500m [K=1.0393]
 Remarks:

ISOLUX DIAGRAM

Test:U:120.0V I:0.2849A P:33.29W PF:0.9738 Freq:60.00Hz Lamp Flux:2108.39x1 lm		
NAME:	TYPE:LED	WEIGHT:
SPEC.:ASD-LWS27C-48D36CCBK_5000K	DIM.:	SERIAL No.:
MFR.: ASD Lighting Corp	SUR.:	Shielding Angle:



C Range: 0 - 360DEG
 C Interval: 15.0DEG
 Test Speed: HIGH
 Temperature: 24.8DEG
 Operators: Alan Wang
 Test Date: 22 October 2023

γ Range: 0 - 180DEG
 γ Interval: 1.0DEG
 Test System: EVERFINE GO-R5000_V2 SYSTEM V2.00.416
 Humidity: 42.9%
 Test Distance: 2.500m [K=1.0393]
 Remarks:

LED Avg.L Report

Test:U:120.0V I:0.2849A P:33.29W PF:0.9738 Freq:60.00Hz Lamp Flux:2108.39x1 lm		
NAME:	TYPE:LED	WEIGHT:
SPEC.:ASD-LWS27C-48D36CCBK_5000K	DIM.:	SERIAL No.:
MFR.: ASD Lighting Corp	SUR.:	Shielding Angle:

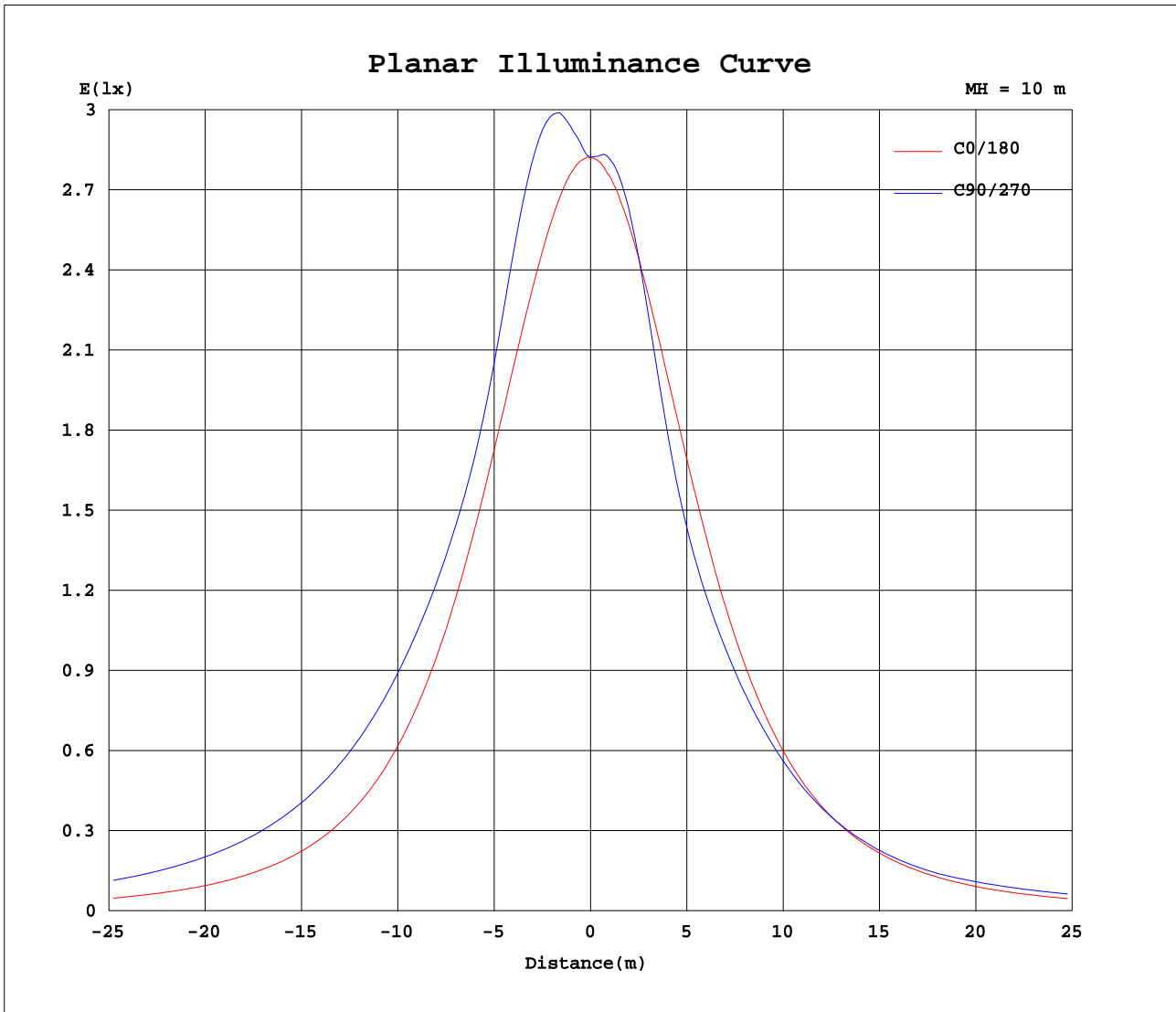
AvgL	cd/m2
L_0~180(65)av	1045
L_0~180(75)av	1185
L_0~180(85)av	2170
L_90~270(65)av	1825
L_90~270(75)av	2776
L_90~270(85)av	7679
L_45(65)av	1672
L_45(75)av	2522
L_45(85)av	6978

Standard: GB/T 29293-2012

C Range: 0 - 360DEG
 C Interval: 15.0DEG
 Test Speed: HIGH
 Temperature: 24.8DEG
 Operators: Alan Wang
 Test Date: 22 October 2023

γ Range: 0 - 180DEG
 γ Interval: 1.0DEG
 Test System: EVERFINE GO-R5000_V2 SYSTEM V2.00.416
 Humidity: 42.9%
 Test Distance: 2.500m [K=1.0393]
 Remarks:

Planar Illuminance Curve



C Range: 0 - 360DEG
 C Interval: 15.0DEG
 Test Speed: HIGH
 Temperature: 24.8DEG
 Operators: Alan Wang
 Test Date: 22 October 2023

γ Range: 0 - 180DEG
 γ Interval: 1.0DEG
 Test System: EVERFINE GO-R5000_V2 SYSTEM V2.00.416
 Humidity: 42.9%
 Test Distance: 2.500m [K=1.0393]
 Remarks:

LUMINOUS DISTRIBUTION INTENSITY DATA

Test:U:120.0V I:0.2849A P:33.29W PF:0.9738 Freq:60.00Hz Lamp Flux:2108.39x1 lm		
NAME:	TYPE:LED	WEIGHT:
SPEC.:ASD-LWS27C-48D36CCBK_5000K	DIM.:	SERIAL No.:
MFR.: ASD Lighting Corp	SUR.:	Shielding Angle:

Table--1

UNIT: cd

C(DEG) γ (DEG)	0	15	30	45	60	75	90	105	120	135	150	165	180	195	210	225	240	255	270
0	282	283	282	282	282	282	282	282	282	283	282	282	282	283	282	282	282	282	282
5	281	282	285	289	293	295	295	294	292	289	285	281	279	281	282	284	285	285	286
10	276	281	290	299	307	311	313	311	306	298	289	280	274	276	280	282	282	282	282
15	269	278	292	307	315	320	321	318	314	305	291	275	266	270	273	272	269	265	264
20	259	271	293	307	313	315	314	313	311	304	290	268	255	260	261	255	244	237	234
25	246	263	288	300	300	297	294	294	296	295	284	260	241	248	245	231	217	209	207
30	230	253	278	285	280	275	273	272	275	279	273	249	226	233	225	205	194	190	190
35	213	239	264	267	262	262	262	260	257	259	259	235	207	215	202	185	179	178	179
40	194	224	248	249	251	255	256	253	247	242	242	220	189	196	181	169	169	168	169
45	174	207	230	236	244	250	252	248	241	230	224	204	169	176	162	158	158	158	159
50	155	190	214	226	238	244	246	243	235	221	208	187	150	157	147	147	148	147	147
55	136	173	200	217	231	238	239	237	229	214	194	171	131	138	133	136	137	136	136
60	117	157	187	210	224	229	231	229	223	208	184	156	113	121	121	125	126	124	124
65	100	142	176	202	215	221	223	221	215	201	175	142	96.6	106	110	114	116	120	121
70	84.4	129	166	193	207	213	215	213	208	194	166	130	81.3	91.6	98.7	106	115	118	119
75	69.7	117	157	185	199	204	206	205	201	187	158	119	67.1	78.3	88.4	105	112	114	114
80	56.2	106	148	177	191	196	199	198	194	180	150	109	53.6	65.9	86.9	103	109	110	110
85	43.4	95.1	139	170	184	189	192	191	188	174	143	99.5	41.0	58.5	84.3	99.9	106	107	107
90	36.8	90.8	137	168	183	188	191	191	187	173	142	96.3	35.3	57.3	84.1	99.7	106	106	106
95	42.1	94.8	141	173	188	193	196	196	192	178	146	101	41.1	54.9	81.3	97.4	104	105	105
100	52.5	104	149	181	197	203	206	205	201	186	155	110	51.8	57.7	80.1	96.8	104	105	105
105	63.5	113	158	191	207	213	215	214	210	195	163	120	63.3	67.1	78.9	96.6	104	106	106
110	75.5	122	167	199	216	223	226	225	219	203	171	130	76.0	77.7	83.1	95.1	105	107	108
115	88.7	133	176	208	225	233	236	234	228	211	180	142	89.9	89.0	91.7	95.1	103	107	109
120	103	145	186	215	234	243	246	243	236	218	189	154	106	101	101	104	104	105	107
125	120	159	196	223	241	251	254	252	242	224	199	168	123	111	111	112	113	111	110
130	137	173	208	230	248	257	261	258	248	231	211	183	141	129	122	121	122	120	120
135	156	189	222	238	253	262	265	262	253	238	225	199	160	142	134	130	130	129	129
140	174	204	238	249	258	266	269	265	257	248	241	212	179	164	147	141	139	138	138
145	187	218	252	264	267	270	272	270	265	264	257	220	193	184	163	152	149	148	148
150	190	230	264	279	281	281	281	280	280	278	270	228	197	189	182	167	162	159	158
155	189	240	272	290	297	297	296	296	297	291	266	222	198	179	189	186	178	174	173
160	182	249	275	295	305	310	310	310	307	283	239	210	193	192	185	183	190	196	192
165	170	224	264	286	303	309	312	310	287	248	221	200	182	183	178	187	177	198	222
170	183	195	260	269	278	295	297	293	238	222	222	209	191	190	187	190	185	164	200
175	204	202	219	231	256	256	273	217	199	215	211	204	205	205	202	196	195	186	135
180	226	218	209	205	208	156	95.7	125	191	198	219	222	218	217	215	209	203	201	177

C Range: 0 - 360DEG
 C Interval: 15.0DEG
 Test Speed: HIGH
 Temperature: 24.8DEG
 Operators: Alan Wang
 Test Date: 22 October 2023

γ Range: 0 - 180DEG
 γ Interval: 1.0DEG
 Test System: EVERFINE GO-R5000_V2 SYSTEM V2.00.416
 Humidity: 42.9%
 Test Distance: 2.500m [K=1.0393]
 Remarks:

LUMINOUS DISTRIBUTION INTENSITY DATA

Test:U:120.0V I:0.2849A P:33.29W PF:0.9738 Freq:60.00Hz Lamp Flux:2108.39x1 lm		
NAME:	TYPE:LED	WEIGHT:
SPEC.:ASD-LWS27C-48D36CCBK_5000K	DIM.:	SERIAL No.:
MFR.: ASD Lighting Corp	SUR.:	Shielding Angle:

Table--2

UNIT: cd

C(DEG) γ (DEG)	285	300	315	330	345														
0	282	282	283	282	282														
5	285	285	284	283	281														
10	282	283	283	281	278														
15	265	270	273	276	272														
20	238	245	256	264	264														
25	210	218	233	248	252														
30	191	196	208	227	236														
35	179	180	187	204	219														
40	169	169	171	183	199														
45	158	159	159	165	179														
50	147	148	147	149	160														
55	136	137	137	136	141														
60	124	126	126	123	124														
65	120	116	115	111	109														
70	118	115	107	100	95.1														
75	114	112	106	89.5	82.0														
80	110	108	103	87.7	69.7														
85	106	105	99.6	85.2	61.5														
90	106	104	98.8	84.6	59.5														
95	104	102	95.9	81.1	56.5														
100	104	102	95.1	79.5	58.0														
105	105	102	94.7	77.8	66.3														
110	106	103	93.7	81.0	75.1														
115	107	102	93.3	89.7	85.1														
120	104	102	102	99.1	96.6														
125	110	111	111	109	107														
130	119	120	120	120	122														
135	129	129	129	132	134														
140	138	138	140	147	158														
145	148	149	153	162	178														
150	160	163	170	180	188														
155	174	179	188	200	191														
160	193	200	207	219	187														
165	221	225	226	223	171														
170	247	239	221	200	186														
175	111	169	185	195	193														
180	104	139	183	203	209														

C Range: 0 - 360DEG
 C Interval: 15.0DEG
 Test Speed: HIGH
 Temperature: 24.8DEG
 Operators: Alan Wang
 Test Date: 22 October 2023

γ Range: 0 - 180DEG
 γ Interval: 1.0DEG
 Test System: EVERFINE GO-R5000_V2 SYSTEM V2.00.416
 Humidity: 42.9%
 Test Distance: 2.500m [K=1.0393]
 Remarks: