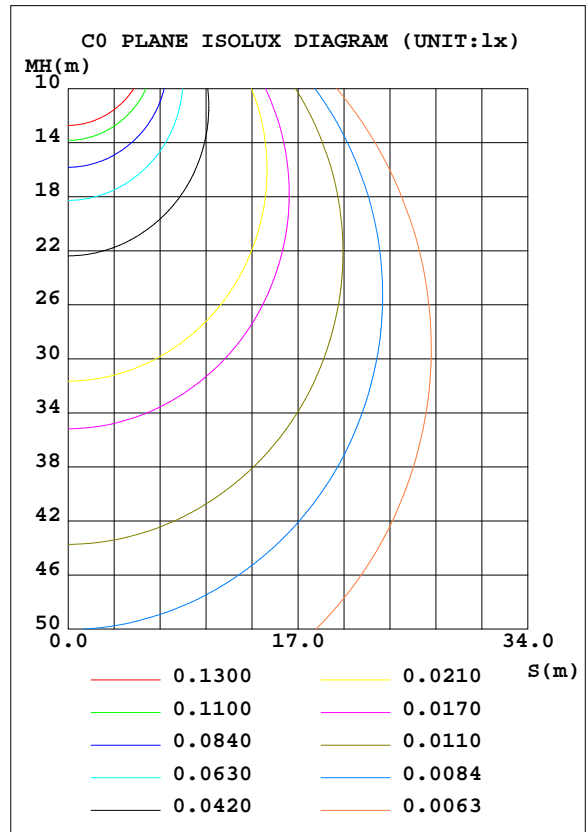
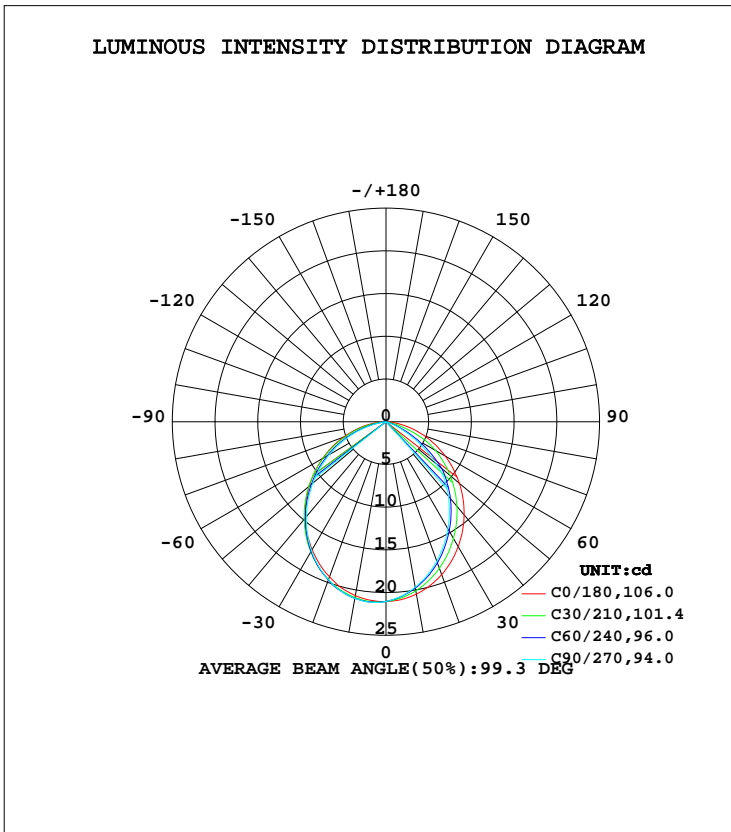


LUMINAIRE PHOTOMETRIC TEST REPORT

Test:U:12.0V I:0.1275A P:1.53W PF:1.0000 Freq:0Hz Lamp Flux:49.9396x1 lm		
NAME:	TYPE:LED	WEIGHT:
SPEC.:ASD-HSLS4-2SM-RGB-BR_5000K	DIM.:	SERIAL No.:
MFR.: ASD Lighting Corp	SUR.:	Shielding Angle:

DATA OF LAMP		PHOTOMETRIC DATA Eff: 32.64 lm/W			
MODEL	ASD-HSLS4-2SM-RGB-BR	I _{max} (cd)	21.20	S/MH(C0/180)	1.23
NOMINAL POWER(W)		LOR(%)	100.0	S/MH(C90/270)	1.23
RATED VOLTAGE(V)	12	TOTAL FLUX(lm)	49.940	η UP, DN(C0-180)	0.0,44.6
NOMINAL FLUX(lm)	49.9396	CIE CLASS	DIRECT	η UP, DN(C180-360)	0.0,55.3
LAMPS INSIDE	1	η up(%)	0.1	CIBSE SHR NOM	1.25
TEST VOLTAGE(V)	12	η down(%)	99.9	CIBSE SHR MAX	1.30



C Range: 0 - 360DEG
 C Interval: 15.0DEG
 Test Speed: HIGH
 Temperature: 24.9DEG
 Operators:Alan Wang
 Test Date:12 January 2024

γ Range: 0 - 180DEG
 γ Interval: 1.0DEG
 Test System:EVERFINE GO-R5000_V2 SYSTEM V2.00.416
 Humidity: 41.1%
 Test Distance:2.500m [K=1.0423]
 Remarks:

ZONAL FLUX DIAGRAM

ZONAL FLUX DIAGRAM:

γ	C0	C45	C90	C135	C180	C225	C270	C315	γ	Φ zone	Φ total	%lum, lamp
10	20.49	19.90	19.68	20.02	20.66	20.95	21.00	20.87	0- 10	1.979	1.979	3.96,3.96
20	19.05	17.88	17.38	18.10	19.33	19.71	19.69	19.57	10- 20	5.567	7.546	15.1,15.1
30	16.90	15.23	14.49	15.56	17.29	17.60	17.44	17.44	20- 30	8.166	15.71	31.5,31.5
40	14.23	12.26	11.36	12.66	14.71	14.82	14.50	14.66	30- 40	9.448	25.16	50.4,50.4
50	11.21	9.123	7.700	9.560	11.75	11.62	11.18	11.48	40- 50	9.322	34.48	69,69
60	7.991	5.402	3.525	6.150	8.558	8.204	7.634	8.081	50- 60	7.770	42.25	84.6,84.6
70	4.763	1.665	0.6573	2.211	5.309	4.705	4.024	4.628	60- 70	5.128	47.38	94.9,94.9
80	1.741	0.0145	0	0.0329	2.254	1.352	0.7639	1.336	70- 80	2.230	49.61	99.3,99.3
90	0.0004	0.0010	0.0010	0.0003	0.0033	0.0195	0.0224	0.0171	80- 90	0.2910	49.90	99.9,99.9
100	0.0023	0.0020	0.0017	0.0020	0.0043	0.0023	0.0020	0.0026	90-100	0.0028	49.90	99.9,99.9
110	0.0026	0.0026	0.0027	0.0030	0.0053	0.0030	0.0023	0.0033	100-110	0.0028	49.91	99.9,99.9
120	0.0056	0.0040	0.0033	0.0046	0.0063	0.0046	0.0033	0.0050	110-120	0.0037	49.91	99.9,99.9
130	0.0079	0.0066	0.0063	0.0073	0.0089	0.0073	0.0063	0.0076	120-130	0.0051	49.91	99.9,99.9
140	0.0089	0.0086	0.0089	0.0079	0.0112	0.0106	0.0099	0.0102	130-140	0.0064	49.92	100,100
150	0.0102	0.0099	0.0099	0.0089	0.0145	0.0149	0.0149	0.0142	140-150	0.0069	49.93	100,100
160	0.0129	0.0122	0.0115	0.0119	0.0188	0.0182	0.0162	0.0165	150-160	0.0063	49.93	100,100
170	0.0142	0.0145	0.0135	0.0132	0.0178	0.0178	0.0165	0.0159	160-170	0.0043	49.94	100,100
180	0.0165	0.0162	0.0165	0.0155	0.0165	0.0169	0.0159	0.0142	170-180	0.0015	49.94	100,100
DEG	LUMINOUS INTENSITY:cd									UNIT:lm		

Conical surface Flux(90deg): 29.923 lm

%lum = 59.9%

%lamp = 59.9%

Conical surface Flux(120deg): 42.251 lm

%lum = 84.6%

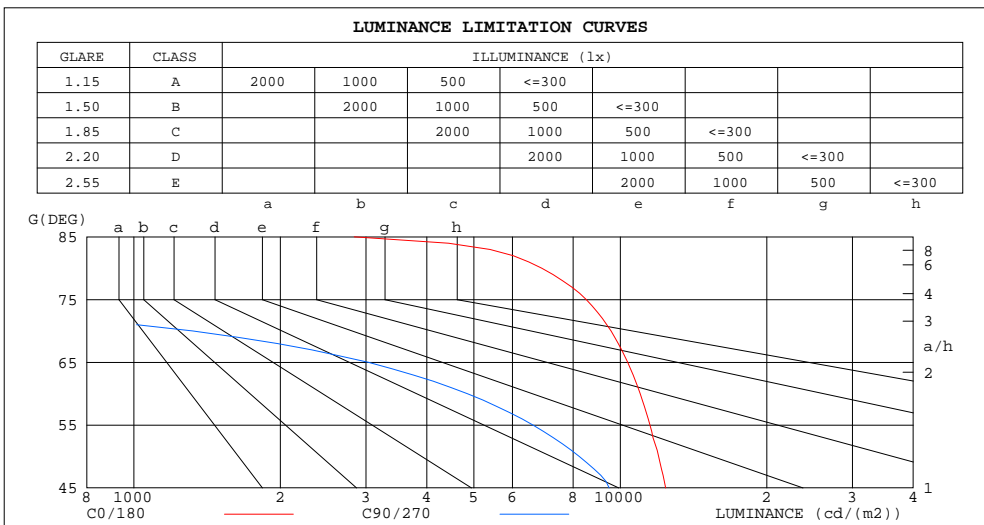
%lamp = 84.6%

C Range: 0 - 360DEG
C Interval: 15.0DEG
Test Speed: HIGH
Temperature: 24.9DEG
Operators: Alan Wang
Test Date: 12 January 2024

γ Range: 0 - 180DEG
 γ Interval: 1.0DEG
Test System: EVERFINE GO-R5000_V2 SYSTEM V2.00.416
Humidity: 41.1%
Test Distance: 2.500m [K=1.0423]
Remarks:

LUMINANCE LIMITATION CURVES

Test:U:12.0V I:0.1275A P:1.53W PF:1.0000 Freq:0Hz Lamp Flux:49.9396x1 lm		
NAME:	TYPE:LED	WEIGHT:
SPEC.:ASD-HSLS4-2SM-RGB-BR_5000K	DIM.:	SERIAL No.:
MFR.: ASD Lighting Corp	SUR.:	Shielding Angle:



LUMINANCE cd/(m2)		
G(DEG)	C0/180	C90/270
85	2838	3
80	6893	0
75	8508	107
70	9571	1321
65	10355	3033
60	10984	4846
55	11508	6613
50	11987	8233
45	12394	9484

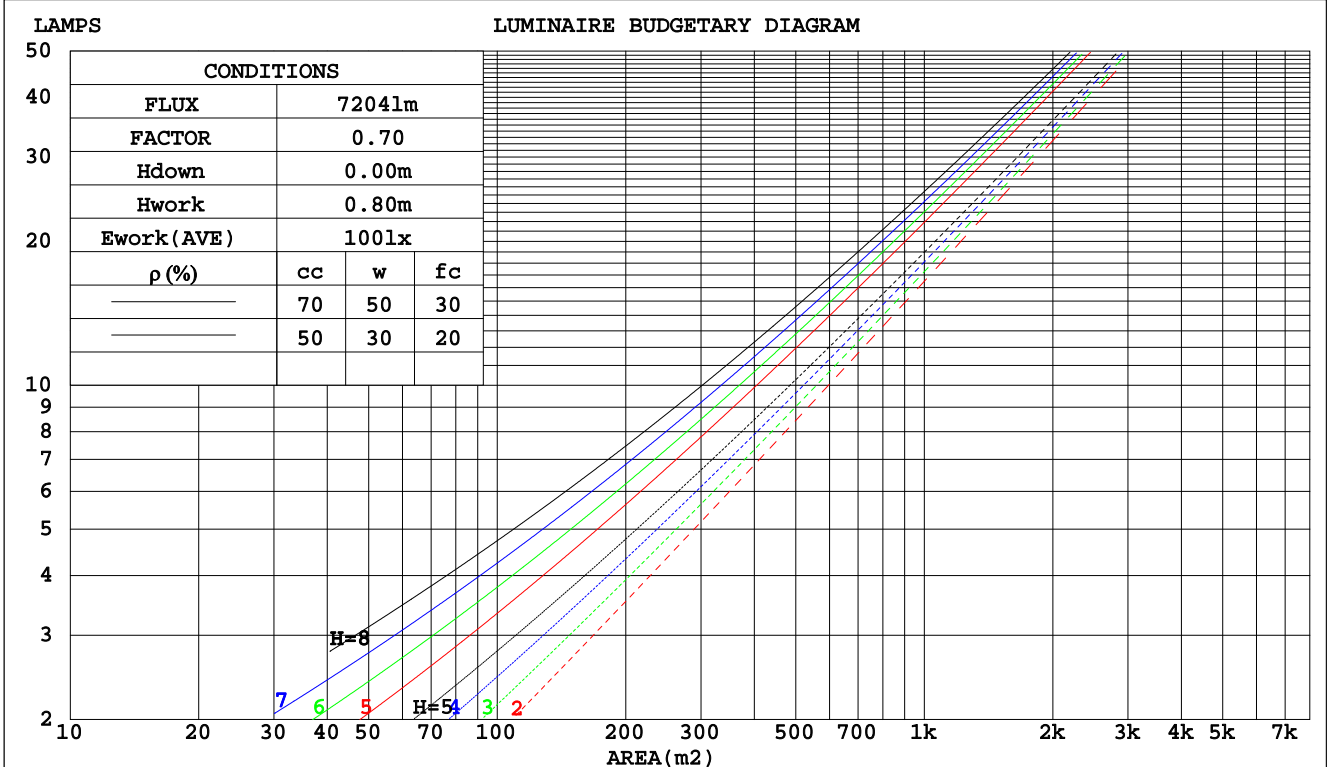
C Range: 0 - 360DEG
 C Interval: 15.0DEG
 Test Speed: HIGH
 Temperature: 24.9DEG
 Operators: Alan Wang
 Test Date: 12 January 2024

γ Range: 0 - 180DEG
 γ Interval: 1.0DEG
 Test System: EVERFINE GO-R5000_V2 SYSTEM V2.00.416
 Humidity: 41.1%
 Test Distance: 2.500m [K=1.0423]
 Remarks:

CU AND LUMINAIRE BUDGETARY ESTIMATE DIAGRAM

Test:U:12.0V I:0.1275A P:1.53W PF:1.0000 Freq:0Hz Lamp Flux:49.9396x1 lm		
NAME:	TYPE:LED	WEIGHT:
SPEC.:ASD-HSLS4-2SM-RGB-BR_5000K	DIM.:	SERIAL No.:
MFR.: ASD Lighting Corp	SUR.:	Shielding Angle:

pcc	80%			70%			50%			30%			10%			0
	50%	30%	10%	50%	30%	10%	50%	30%	10%	50%	30%	10%	50%	30%	10%	0
pw																
pfc	20%			20%			20%			20%			20%			0
RCR	RCR:Room Cavity Ratio															
	Coefficients of Utilization(CU)															
0.0	1.19	1.19	1.19	1.16	1.16	1.16	1.11	1.11	1.11	1.06	1.06	1.06	1.02	1.02	1.02	.00
1.0	1.06	1.02	.98	1.03	.00	.97	.99	.96	.94	.95	.93	.91	.92	.90	.88	.86
2.0	.93	.87	.82	.91	.85	.81	.88	.83	.79	.84	.80	.77	.81	.78	.75	.73
3.0	.82	.75	.69	.81	.74	.68	.78	.72	.67	.75	.70	.66	.73	.68	.65	.63
4.0	.73	.65	.59	.72	.64	.58	.70	.63	.58	.67	.62	.57	.65	.60	.56	.54
5.0	.66	.57	.51	.65	.57	.51	.63	.56	.50	.61	.55	.50	.59	.54	.49	.47
6.0	.60	.51	.45	.59	.51	.45	.57	.50	.44	.55	.49	.44	.54	.48	.44	.42
7.0	.54	.46	.40	.53	.45	.40	.52	.45	.39	.50	.44	.39	.49	.43	.39	.37
8.0	.50	.41	.36	.49	.41	.36	.48	.40	.35	.46	.40	.35	.45	.39	.35	.33
9.0	.46	.38	.32	.45	.37	.32	.44	.37	.32	.43	.36	.32	.42	.36	.32	.30
10.0	.42	.34	.29	.42	.34	.29	.41	.34	.29	.40	.33	.29	.39	.33	.29	.27



C Range: 0 - 360DEG
 C Interval: 15.0DEG
 Test Speed: HIGH
 Temperature: 24.9DEG
 Operators: Alan Wang
 Test Date: 12 January 2024

γ Range: 0 - 180DEG
 γ Interval: 1.0DEG
 Test System: EVERFINE GO-R5000_V2 SYSTEM V2.00.416
 Humidity: 41.1%
 Test Distance: 2.500m [K=1.0423]
 Remarks:

WEC AND CCEC

Test:U:12.0V I:0.1275A P:1.53W PF:1.0000 Freq:0Hz Lamp Flux:49.9396x1 lm		
NAME:	TYPE:LED	WEIGHT:
SPEC.:ASD-HSLS4-2SM-RGB-BR_5000K	DIM.:	SERIAL No.:
MFR.: ASD Lighting Corp	SUR.:	Shielding Angle:

ρcc	80%			70%			50%			30%			10%			0
ρw	50%	30%	10%	50%	30%	10%	50%	30%	10%	50%	30%	10%	50%	30%	10%	0
ρfc	20%			20%			20%			20%			20%			0
RCR	RCR:Room Cavity Ratio						Wall Exitance Coefficients(WEC)									
0.0																
1.0	.276	.157	.050	.269	.153	.049	.255	.147	.047	.243	.140	.045	.232	.135	.043	
2.0	.266	.146	.045	.260	.143	.044	.249	.138	.043	.238	.134	.042	.228	.129	.041	
3.0	.250	.133	.040	.245	.131	.039	.235	.127	.039	.225	.124	.038	.217	.120	.037	
4.0	.234	.121	.036	.229	.120	.035	.220	.117	.035	.212	.114	.034	.204	.111	.034	
5.0	.218	.111	.032	.214	.110	.032	.206	.107	.032	.198	.105	.031	.191	.102	.031	
6.0	.203	.102	.029	.200	.101	.029	.193	.099	.029	.186	.097	.028	.180	.095	.028	
7.0	.190	.094	.027	.187	.093	.027	.181	.091	.026	.175	.090	.026	.169	.088	.026	
8.0	.179	.087	.025	.176	.086	.024	.170	.085	.024	.165	.083	.024	.160	.082	.024	
9.0	.168	.081	.023	.165	.081	.023	.160	.079	.022	.155	.078	.022	.151	.077	.022	
10.0	.158	.076	.021	.156	.075	.021	.151	.074	.021	.147	.073	.021	.143	.072	.021	

ρcc	80%			70%			50%			30%			10%			0
ρw	50%	30%	10%	50%	30%	10%	50%	30%	10%	50%	30%	10%	50%	30%	10%	0
ρfc	20%			20%			20%			20%			20%			0
RCR	RCR:Room Cavity Ratio						Ceiling Cavity Exitance Coefficients(CCEC)									
0.0	.191	.191	.191	.163	.163	.163	.111	.111	.111	.064	.064	.064	.020	.020	.020	
1.0	.179	.157	.138	.153	.135	.118	.104	.093	.082	.060	.054	.048	.019	.017	.015	
2.0	.169	.133	.102	.145	.114	.088	.099	.079	.061	.057	.046	.036	.018	.015	.012	
3.0	.161	.115	.078	.138	.099	.067	.095	.069	.047	.055	.040	.028	.018	.013	.009	
4.0	.154	.101	.061	.132	.087	.053	.091	.061	.037	.052	.036	.022	.017	.012	.007	
5.0	.146	.091	.050	.126	.078	.043	.087	.055	.030	.050	.032	.018	.016	.011	.006	
6.0	.139	.082	.041	.120	.071	.036	.083	.050	.025	.048	.029	.015	.015	.010	.005	
7.0	.133	.075	.035	.114	.065	.030	.079	.046	.022	.046	.027	.013	.015	.009	.004	
8.0	.127	.069	.030	.109	.060	.026	.075	.042	.019	.044	.025	.011	.014	.008	.004	
9.0	.121	.065	.027	.104	.056	.023	.072	.039	.016	.042	.023	.010	.014	.008	.003	
10.0	.115	.060	.024	.099	.052	.021	.069	.037	.015	.040	.022	.009	.013	.007	.003	

C Range: 0 - 360DEG
 C Interval: 15.0DEG
 Test Speed: HIGH
 Temperature: 24.9DEG
 Operators: Alan Wang
 Test Date: 12 January 2024

γ Range: 0 - 180DEG
 γ Interval: 1.0DEG
 Test System: EVERFINE GO-R5000_V2 SYSTEM V2.00.416
 Humidity: 41.1%
 Test Distance: 2.500m [K=1.0423]
 Remarks:

UGR(Unified Glare Rating) Table

Test:U:12.0V I:0.1275A P:1.53W PF:1.0000 Freq:0Hz Lamp Flux:49.9396x1 lm		
NAME:	TYPE:LED	WEIGHT:
SPEC.:ASD-HSLS4-2SM-RGB-BR_5000K	DIM.:	SERIAL No.:
MFR.: ASD Lighting Corp	SUR.:	Shielding Angle:

ceiling/cavity	0.7	0.7	0.5	0.5	0.3	0.7	0.7	0.5	0.5	0.3
walls	0.5	0.3	0.5	0.3	0.3	0.5	0.3	0.5	0.3	0.3
working plane	0.2	0.2	0.2	0.2	0.2	0.2	0.2	0.2	0.2	0.2
Room dimensions	Viewed crosswise					Viewed endwise				
x = 2H y = 2H	21.0	22.4	21.2	22.6	22.8	18.2	19.7	18.5	19.9	20.1
3H	22.3	23.7	22.6	23.9	24.1	18.3	19.6	18.5	19.8	20.0
4H	22.9	24.1	23.2	24.4	24.6	18.2	19.4	18.5	19.7	19.9
6H	23.1	24.3	23.5	24.6	24.9	18.0	19.2	18.4	19.5	19.8
8H	23.2	24.3	23.5	24.6	24.9	18.0	19.1	18.3	19.4	19.7
12H	23.2	24.3	23.5	24.6	24.9	17.9	19.0	18.3	19.3	19.6
4H 2H	21.1	22.3	21.4	22.6	22.8	18.8	20.0	19.1	20.3	20.5
3H	22.6	23.6	22.9	23.9	24.2	18.8	19.9	19.2	20.2	20.5
4H	23.1	24.1	23.5	24.4	24.8	18.7	19.7	19.1	20.0	20.4
6H	23.5	24.3	23.9	24.7	25.1	18.6	19.5	19.0	19.9	20.2
8H	23.5	24.3	23.9	24.7	25.1	18.6	19.4	19.0	19.8	20.2
12H	23.5	24.3	24.0	24.7	25.1	18.5	19.3	19.0	19.7	20.1
8H 4H	23.0	23.8	23.4	24.2	24.6	18.8	19.6	19.2	19.9	20.3
6H	23.4	24.0	23.8	24.4	24.9	18.7	19.3	19.1	19.8	20.2
8H	23.4	24.0	23.9	24.4	24.9	18.6	19.2	19.1	19.7	20.1
12H	23.4	23.9	23.9	24.4	24.9	18.6	19.1	19.1	19.6	20.0
12H 4H	23.0	23.7	23.4	24.1	24.5	18.7	19.5	19.2	19.9	20.3
6H	23.3	23.9	23.8	24.3	24.8	18.6	19.2	19.1	19.7	20.1
8H	23.4	23.9	23.9	24.3	24.8	18.6	19.1	19.1	19.6	20.0
Variations with the observer position at spacings:										
S = 1.0H	+ 0.2 / - 0.2					+ 0.7 / - 1.0				
1.5H	+ 0.2 / - 0.2					+ 0.4 / - 0.6				
2.0H	+ 0.6 / - 0.7					+ 1.2 / - 2.1				

CIE Pub.117, 49.94 lm Total Lamp Luminous Flux Corrected (8log(F/F0) = -10.4)
 Area: 0.001455 m2

C Range: 0 - 360DEG
 C Interval: 15.0DEG
 Test Speed: HIGH
 Temperature: 24.9DEG
 Operators: Alan Wang
 Test Date: 12 January 2024

γ Range: 0 - 180DEG
 γ Interval: 1.0DEG
 Test System: EVERFINE GO-R5000_V2 SYSTEM V2.00.416
 Humidity: 41.1%
 Test Distance: 2.500m [K=1.0423]
 Remarks:

UTILIZATION FACTORS TABLE

Test:U:12.0V I:0.1275A P:1.53W PF:1.0000 Freq:0Hz Lamp Flux:49.9396x1 lm		
NAME:	TYPE:LED	WEIGHT:
SPEC.:ASD-HSLS4-2SM-RGB-BR_5000K	DIM.:	SERIAL No.:
MFR.: ASD Lighting Corp	SUR.:	Shielding Angle:

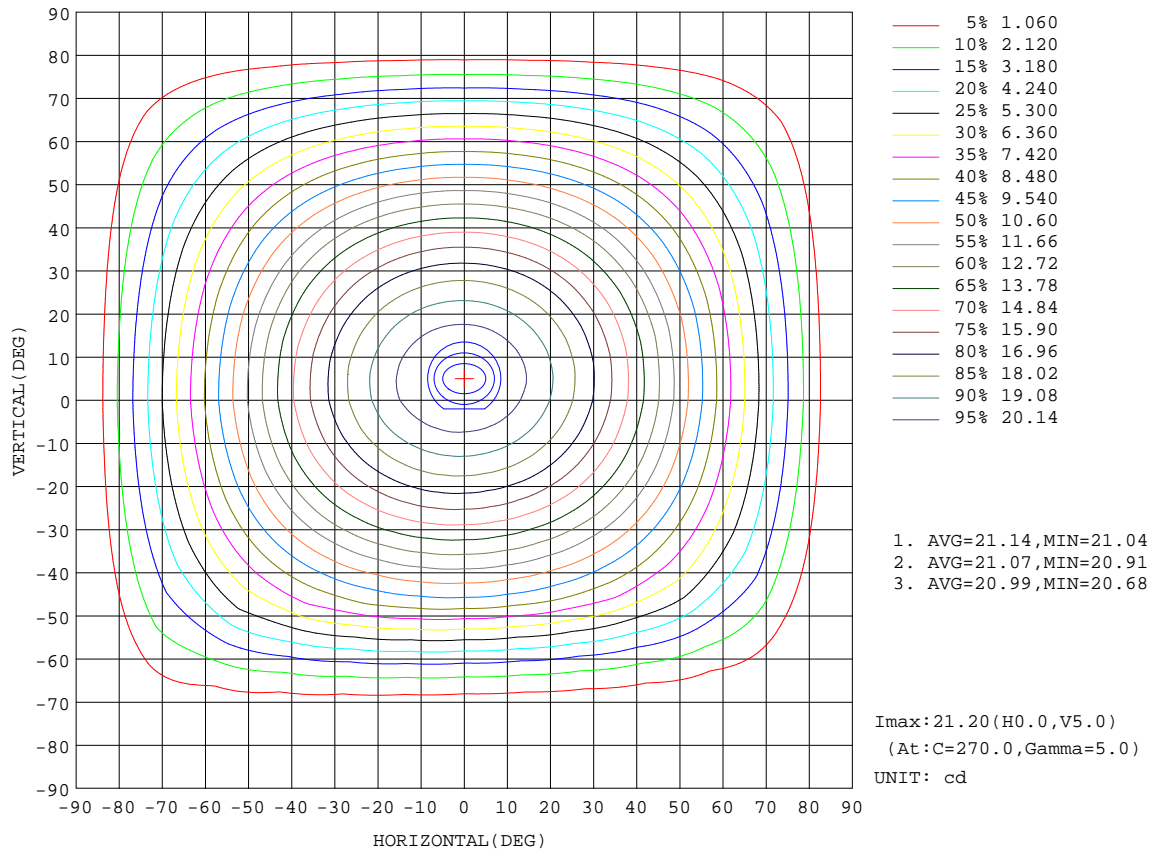
REFLECTANCE										
Ceiling	0.8	0.8	0.8	0.7	0.7	0.7	0.5	0.5	0.5	0
Walls	0.7	0.5	0.3	0.7	0.5	0.3	0.7	0.5	0.3	0
Working plane	0.2	0.2	0.2	0.2	0.2	0.2	0.2	0.2	0.2	0
ROOM INDEX	UTILIZATION FACTORS(PERCENT) k(RI) x RCR = 5									
k = 0.60	61	50	43	60	49	43	59	49	43	37
0.80	71	60	53	70	59	53	68	59	52	46
1.00	79	69	62	78	68	62	76	70	61	55
1.25	86	77	70	85	76	70	82	74	69	62
1.50	91	82	76	89	81	75	87	79	74	67
2.00	98	90	84	96	89	83	92	86	82	74
2.50	101	94	89	99	93	88	95	90	86	78
3.00	104	98	93	102	97	92	98	94	90	82
4.00	108	103	99	106	101	97	101	98	95	86
5.00	110	106	102	108	104	101	103	100	97	89
ROOM INDEX	UF(total)									Direct
According to DIN EN 13032-2 2004			Suspended				SHRNOM = 1.25			

C Range: 0 - 360DEG
 C Interval: 15.0DEG
 Test Speed: HIGH
 Temperature: 24.9DEG
 Operators: Alan Wang
 Test Date: 12 January 2024

γ Range: 0 - 180DEG
 γ Interval: 1.0DEG
 Test System: EVERFINE GO-R5000_V2 SYSTEM V2.00.416
 Humidity: 41.1%
 Test Distance: 2.500m [K=1.0423]
 Remarks:

ISOCANDELA DIAGRAM

Test:U:12.0V I:0.1275A P:1.53W PF:1.0000 Freq:0Hz Lamp Flux:49.9396x1 lm		
NAME:	TYPE:LED	WEIGHT:
SPEC.:ASD-HSLS4-2SM-RGB-BR_5000K	DIM.:	SERIAL No.:
MFR.: ASD Lighting Corp	SUR.:	Shielding Angle:

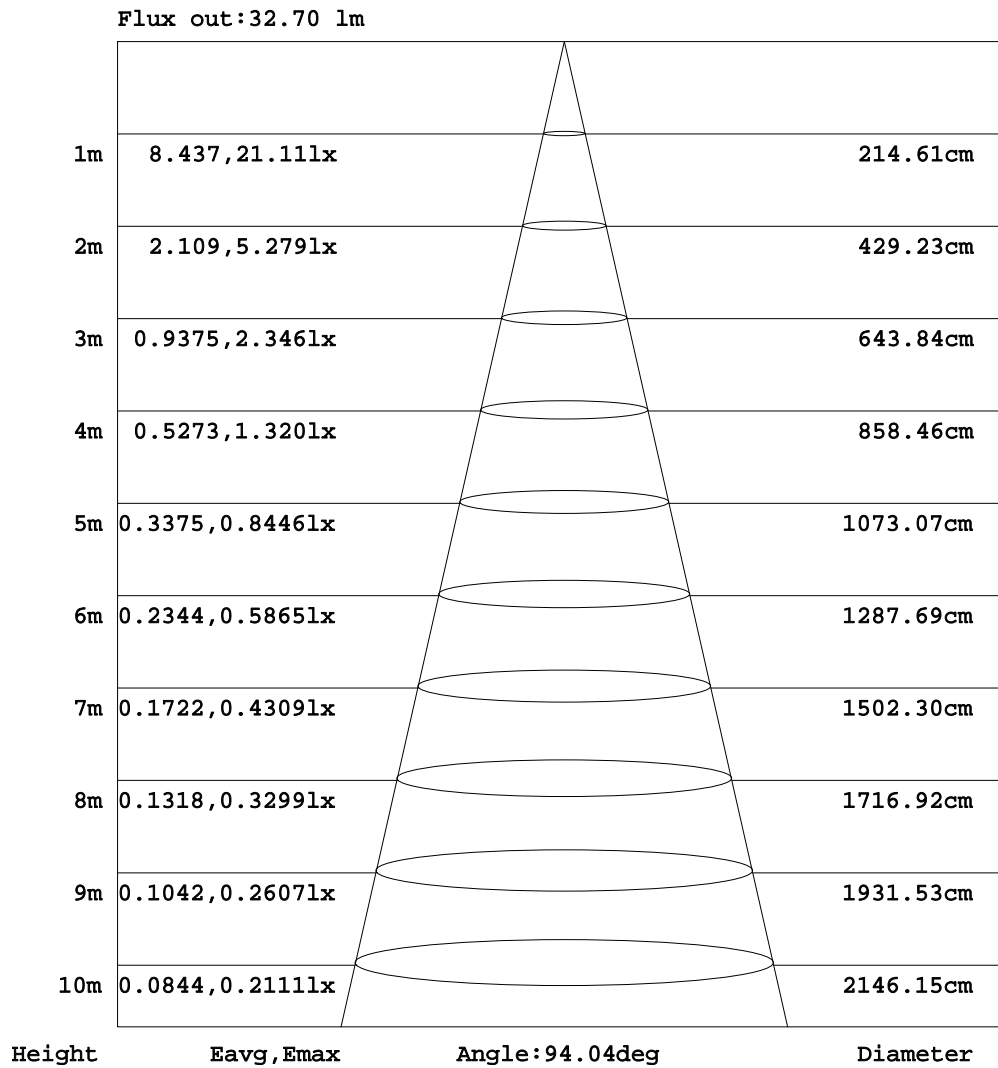


C Range: 0 - 360DEG
 C Interval: 15.0DEG
 Test Speed: HIGH
 Temperature: 24.9DEG
 Operators: Alan Wang
 Test Date: 12 January 2024

γ Range: 0 - 180DEG
 γ Interval: 1.0DEG
 Test System: EVERFINE GO-R5000_V2 SYSTEM V2.00.416
 Humidity: 41.1%
 Test Distance: 2.500m [K=1.0423]
 Remarks:

AAI Figure

Test:U:12.0V I:0.1275A P:1.53W PF:1.0000 Freq:0Hz Lamp Flux:49.9396x1 lm		
NAME:	TYPE:LED	WEIGHT:
SPEC.:ASD-HSLS4-2SM-RGB-BR_5000K	DIM.:	SERIAL No.:
MFR.: ASD Lighting Corp	SUR.:	Shielding Angle:



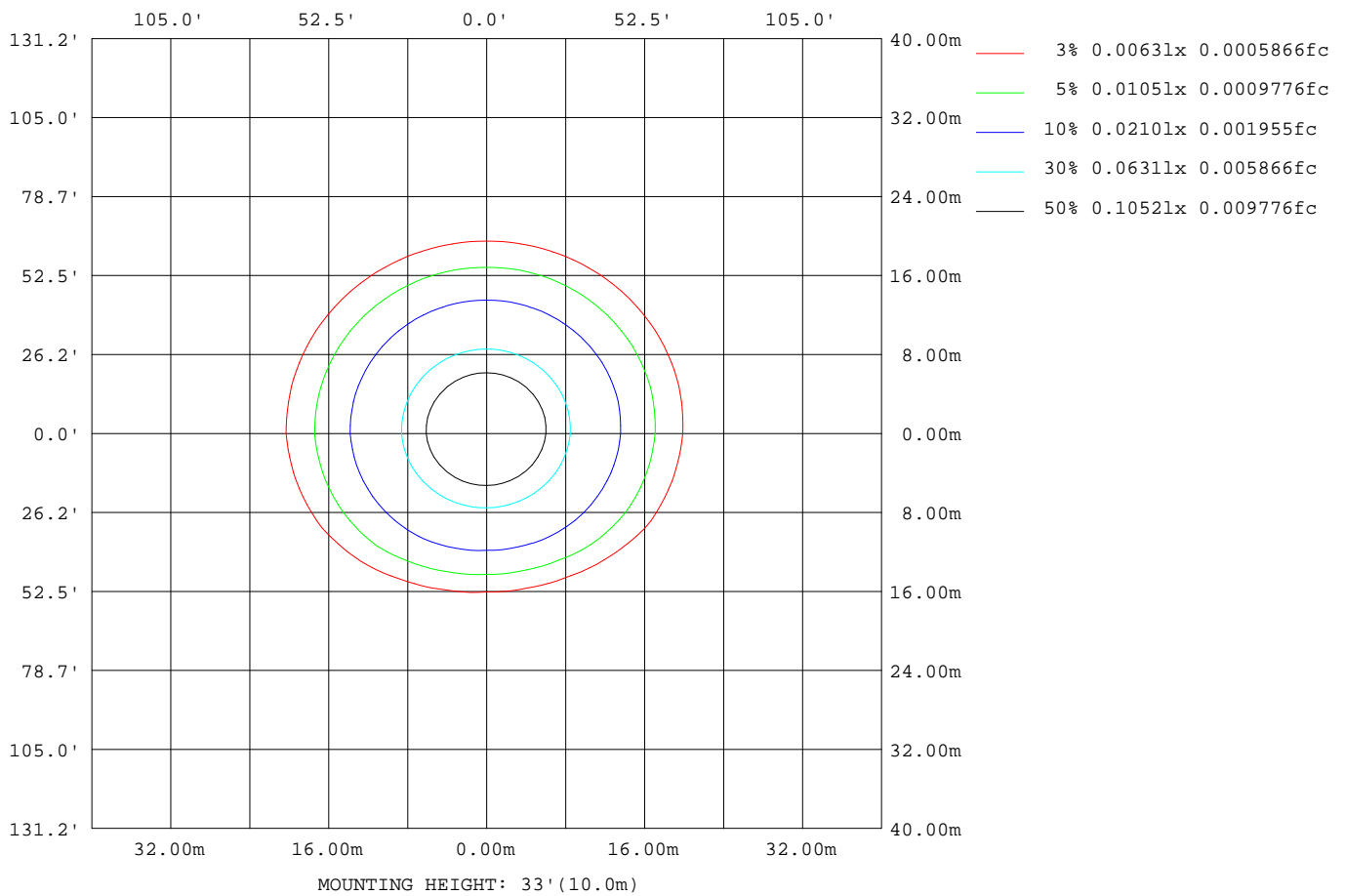
Note:The Curves indicate the illuminated area and the average illumination when the luminaire is at different distance.

C Range: 0 - 360DEG
 C Interval: 15.0DEG
 Test Speed: HIGH
 Temperature: 24.9DEG
 Operators:Alan Wang
 Test Date:12 January 2024

γ Range: 0 - 180DEG
 γ Interval: 1.0DEG
 Test System:EVERFINE GO-R5000_V2 SYSTEM V2.00.416
 Humidity: 41.1%
 Test Distance:2.500m [K=1.0423]
 Remarks:

ISOLUX DIAGRAM

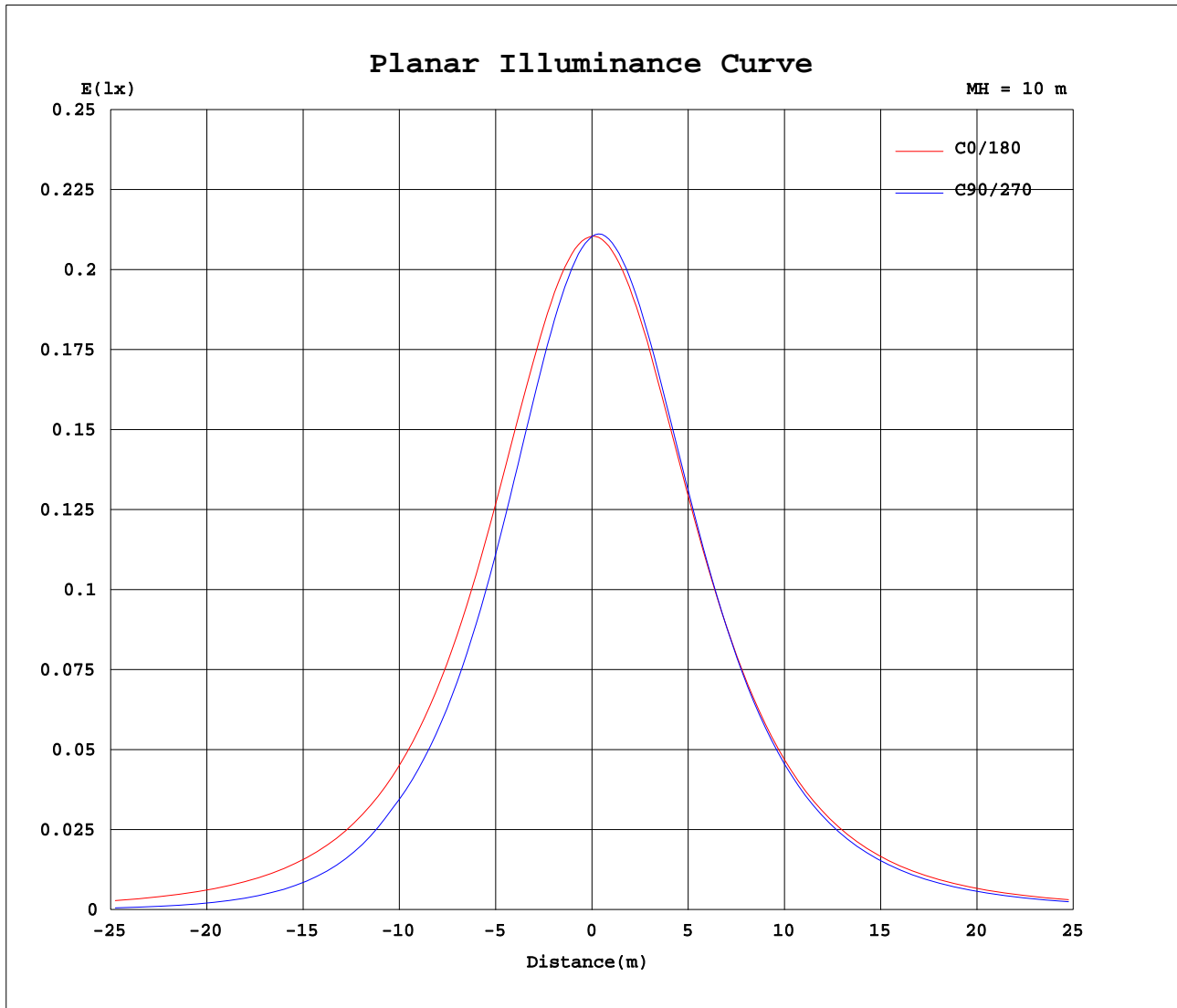
Test:U:12.0V I:0.1275A P:1.53W PF:1.0000 Freq:0Hz Lamp Flux:49.9396x1 lm		
NAME:	TYPE:LED	WEIGHT:
SPEC.:ASD-HSLS4-2SM-RGB-BR_5000K	DIM.:	SERIAL No.:
MFR.: ASD Lighting Corp	SUR.:	Shielding Angle:



C Range: 0 - 360DEG
 C Interval: 15.0DEG
 Test Speed: HIGH
 Temperature: 24.9DEG
 Operators: Alan Wang
 Test Date: 12 January 2024

γ Range: 0 - 180DEG
 γ Interval: 1.0DEG
 Test System: EVERFINE GO-R5000_V2 SYSTEM V2.00.416
 Humidity: 41.1%
 Test Distance: 2.500m [K=1.0423]
 Remarks:

Planar Illuminance Curve



C Range: 0 - 360DEG
 C Interval: 15.0DEG
 Test Speed: HIGH
 Temperature: 24.9DEG
 Operators: Alan Wang
 Test Date: 12 January 2024

γ Range: 0 - 180DEG
 γ Interval: 1.0DEG
 Test System: EVERFINE GO-R5000_V2 SYSTEM V2.00.416
 Humidity: 41.1%
 Test Distance: 2.500m [K=1.0423]
 Remarks:

LUMINOUS DISTRIBUTION INTENSITY DATA

Test:U:12.0V I:0.1275A P:1.53W PF:1.0000 Freq:0Hz Lamp Flux:49.9396x1 lm		
NAME:	TYPE:LED	WEIGHT:
SPEC.:ASD-HSL4-2SM-RGB-BR_5000K	DIM.:	SERIAL No.:
MFR.: ASD Lighting Corp	SUR.:	Shielding Angle:

Table--1

UNIT: cd

C(DEG) γ (DEG)	0	15	30	45	60	75	90	105	120	135	150	165	180	195	210	225	240	255	270
0	21.0	21.0	21.0	21.0	21.0	21.0	21.0	21.0	21.0	21.0	21.0	21.0	21.0	21.0	21.0	21.0	21.0	21.0	21.0
5	20.9	20.8	20.7	20.6	20.5	20.5	20.5	20.5	20.6	20.6	20.8	20.9	21.0	21.1	21.1	21.2	21.2	21.2	21.2
10	20.5	20.3	20.1	19.9	19.8	19.7	19.7	19.7	19.9	20.0	20.2	20.4	20.7	20.8	20.9	20.9	21.0	21.0	21.0
15	19.9	19.6	19.3	19.0	18.8	18.6	18.6	18.7	18.9	19.1	19.5	19.8	20.1	20.3	20.4	20.5	20.5	20.5	20.5
20	19.0	18.7	18.3	17.9	17.6	17.4	17.4	17.5	17.8	18.1	18.5	19.0	19.3	19.6	19.7	19.7	19.7	19.7	19.7
25	18.1	17.6	17.1	16.6	16.2	16.0	16.0	16.1	16.5	16.9	17.4	18.0	18.4	18.6	18.7	18.8	18.7	18.7	18.7
30	16.9	16.4	15.8	15.2	14.8	14.5	14.5	14.7	15.0	15.6	16.2	16.8	17.3	17.5	17.6	17.6	17.5	17.5	17.4
35	15.6	15.0	14.4	13.8	13.3	13.0	12.9	13.1	13.6	14.2	14.8	15.5	16.1	16.3	16.3	16.3	16.2	16.1	16.0
40	14.2	13.6	12.9	12.3	11.7	11.4	11.4	11.6	12.0	12.7	13.4	14.1	14.7	14.9	14.9	14.8	14.7	14.6	14.5
45	12.8	12.1	11.4	10.7	10.1	9.82	9.76	9.98	10.4	11.1	11.9	12.7	13.3	13.4	13.4	13.3	13.1	12.9	12.9
50	11.2	10.6	9.82	9.12	8.52	7.84	7.70	8.12	8.88	9.56	10.4	11.1	11.7	11.9	11.8	11.6	11.4	11.2	11.2
55	9.60	8.98	8.25	7.52	6.35	5.66	5.52	5.93	6.87	7.99	8.79	9.55	10.2	10.3	10.2	9.93	9.69	9.49	9.43
60	7.99	7.38	6.66	5.40	4.26	3.65	3.53	3.88	4.76	6.15	7.21	7.96	8.56	8.61	8.46	8.20	7.91	7.71	7.63
65	6.37	5.78	4.88	3.40	2.42	1.96	1.87	2.13	2.83	4.09	5.63	6.36	6.93	6.94	6.75	6.45	6.13	5.91	5.82
70	4.76	4.21	2.91	1.67	1.00	0.71	0.66	0.81	1.26	2.21	3.78	4.78	5.31	5.29	5.06	4.70	4.35	4.11	4.02
75	3.20	2.62	1.22	0.45	0.12	0.04	0.04	0.05	0.25	0.76	1.90	3.26	3.74	3.68	3.39	2.99	2.61	2.36	2.29
80	1.74	0.94	0.15	0.01	0.00	0.00	0.00	0.00	0.00	0.03	0.45	1.72	2.25	2.15	1.79	1.35	1.01	0.82	0.76
85	0.36	0.02	0.00	0.00	0.00	0.00	0.00	0.00	0.00	0.00	0.00	0.18	0.69	0.67	0.34	0.11	0.08	0.07	0.07
90	0.00	0.00	0.00	0.00	0.00	0.00	0.00	0.00	0.00	0.00	0.00	0.00	0.00	0.01	0.02	0.02	0.02	0.02	0.02
95	0.00	0.00	0.00	0.00	0.00	0.00	0.00	0.00	0.00	0.00	0.00	0.00	0.00	0.00	0.00	0.00	0.00	0.00	0.00
100	0.00	0.00	0.00	0.00	0.00	0.00	0.00	0.00	0.00	0.00	0.00	0.00	0.00	0.00	0.00	0.00	0.00	0.00	0.00
105	0.00	0.00	0.00	0.00	0.00	0.00	0.00	0.00	0.00	0.00	0.00	0.00	0.00	0.01	0.00	0.00	0.00	0.00	0.00
110	0.00	0.00	0.00	0.00	0.00	0.00	0.00	0.00	0.00	0.00	0.00	0.00	0.00	0.01	0.00	0.00	0.00	0.00	0.00
115	0.00	0.00	0.00	0.00	0.00	0.00	0.00	0.00	0.00	0.00	0.00	0.00	0.00	0.01	0.01	0.00	0.00	0.00	0.00
120	0.01	0.00	0.00	0.00	0.00	0.00	0.00	0.00	0.00	0.00	0.00	0.00	0.00	0.01	0.01	0.01	0.00	0.00	0.00
125	0.01	0.01	0.01	0.01	0.01	0.00	0.00	0.01	0.00	0.00	0.01	0.00	0.01	0.01	0.01	0.01	0.01	0.00	0.00
130	0.01	0.01	0.01	0.01	0.01	0.01	0.01	0.01	0.01	0.01	0.01	0.01	0.01	0.01	0.01	0.01	0.01	0.01	0.01
135	0.01	0.01	0.01	0.01	0.01	0.01	0.01	0.01	0.01	0.01	0.01	0.01	0.01	0.01	0.01	0.01	0.01	0.01	0.01
140	0.01	0.01	0.01	0.01	0.01	0.01	0.01	0.01	0.01	0.01	0.01	0.01	0.01	0.01	0.01	0.01	0.01	0.01	0.01
145	0.01	0.01	0.01	0.01	0.01	0.01	0.01	0.01	0.01	0.01	0.01	0.01	0.01	0.01	0.01	0.01	0.01	0.01	0.01
150	0.01	0.01	0.01	0.01	0.01	0.01	0.01	0.01	0.01	0.01	0.01	0.01	0.01	0.01	0.01	0.01	0.01	0.01	0.01
155	0.01	0.01	0.01	0.01	0.01	0.01	0.01	0.01	0.01	0.01	0.01	0.01	0.01	0.01	0.01	0.01	0.01	0.01	0.01
160	0.01	0.01	0.01	0.01	0.01	0.01	0.01	0.01	0.01	0.01	0.01	0.01	0.01	0.01	0.01	0.01	0.01	0.01	0.01
165	0.01	0.01	0.01	0.01	0.01	0.01	0.01	0.01	0.01	0.01	0.01	0.01	0.01	0.01	0.01	0.01	0.01	0.01	0.01
170	0.01	0.01	0.01	0.01	0.01	0.01	0.01	0.01	0.01	0.01	0.01	0.01	0.01	0.01	0.01	0.01	0.01	0.01	0.01
175	0.02	0.02	0.02	0.02	0.01	0.01	0.01	0.01	0.01	0.01	0.01	0.01	0.01	0.01	0.01	0.01	0.01	0.01	0.01
180	0.02	0.02	0.02	0.02	0.02	0.02	0.02	0.02	0.01	0.02	0.02	0.02	0.02	0.02	0.02	0.02	0.02	0.02	0.02

C Range: 0 - 360DEG
 C Interval: 15.0DEG
 Test Speed: HIGH
 Temperature: 24.9DEG
 Operators: Alan Wang
 Test Date: 12 January 2024

γ Range: 0 - 180DEG
 γ Interval: 1.0DEG
 Test System: EVERFINE GO-R5000_V2 SYSTEM V2.00.416
 Humidity: 41.1%
 Test Distance: 2.500m [K=1.0423]
 Remarks:

LUMINOUS DISTRIBUTION INTENSITY DATA

Test:U:12.0V I:0.1275A P:1.53W PF:1.0000 Freq:0Hz Lamp Flux:49.9396x1 lm		
NAME:	TYPE:LED	WEIGHT:
SPEC.:ASD-HSLS4-2SM-RGB-BR_5000K	DIM.:	SERIAL No.:
MFR.: ASD Lighting Corp	SUR.:	Shielding Angle:

Table--2

UNIT: cd

C(DEG) γ (DEG)	285	300	315	330	345														
0	21.0	21.0	21.0	21.0	21.0														
5	21.2	21.1	21.1	21.0	21.0														
10	21.0	20.9	20.9	20.8	20.7														
15	20.5	20.4	20.4	20.3	20.1														
20	19.7	19.6	19.6	19.5	19.3														
25	18.7	18.6	18.6	18.5	18.4														
30	17.4	17.4	17.4	17.4	17.2														
35	16.0	16.1	16.1	16.1	15.9														
40	14.5	14.6	14.7	14.7	14.6														
45	12.9	13.0	13.1	13.2	13.1														
50	11.2	11.3	11.5	11.6	11.5														
55	9.48	9.63	9.80	9.92	9.91														
60	7.71	7.88	8.08	8.24	8.26														
65	5.90	6.11	6.35	6.54	6.60														
70	4.12	4.34	4.63	4.86	4.96														
75	2.38	2.62	2.94	3.23	3.36														
80	0.83	1.03	1.34	1.67	1.86														
85	0.07	0.07	0.12	0.34	0.54														
90	0.02	0.02	0.02	0.01	0.00														
95	0.00	0.00	0.00	0.00	0.00														
100	0.00	0.00	0.00	0.00	0.00														
105	0.00	0.00	0.00	0.00	0.00														
110	0.00	0.00	0.00	0.00	0.00														
115	0.00	0.00	0.00	0.00	0.00														
120	0.00	0.00	0.00	0.01	0.01														
125	0.00	0.00	0.01	0.01	0.01														
130	0.01	0.01	0.01	0.01	0.01														
135	0.01	0.01	0.01	0.01	0.01														
140	0.01	0.01	0.01	0.01	0.01														
145	0.01	0.01	0.01	0.01	0.01														
150	0.01	0.01	0.01	0.01	0.01														
155	0.02	0.02	0.02	0.02	0.02														
160	0.02	0.02	0.02	0.02	0.02														
165	0.02	0.02	0.02	0.02	0.02														
170	0.02	0.02	0.02	0.02	0.02														
175	0.02	0.02	0.02	0.02	0.02														
180	0.02	0.02	0.01	0.01	0.01														

C Range: 0 - 360DEG
 C Interval: 15.0DEG
 Test Speed: HIGH
 Temperature: 24.9DEG
 Operators: Alan Wang
 Test Date: 12 January 2024

γ Range: 0 - 180DEG
 γ Interval: 1.0DEG
 Test System: EVERFINE GO-R5000_V2 SYSTEM V2.00.416
 Humidity: 41.1%
 Test Distance: 2.500m [K=1.0423]
 Remarks: