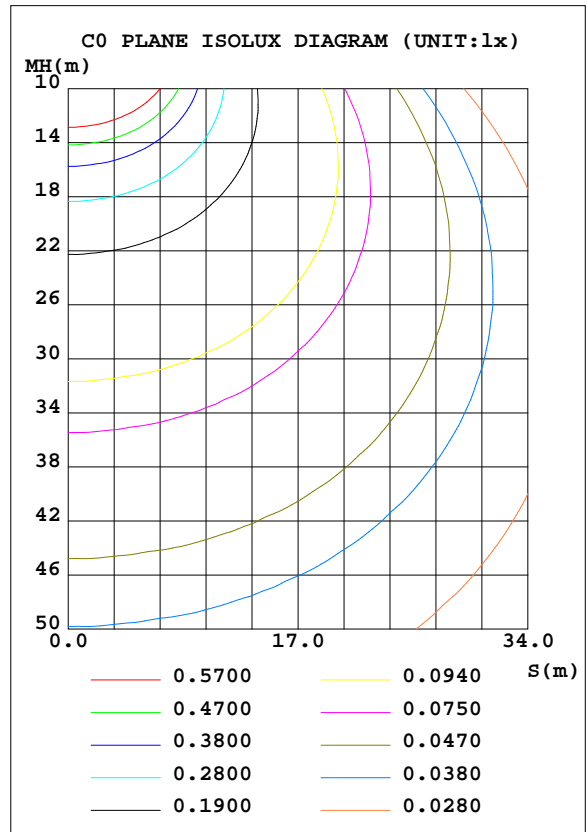
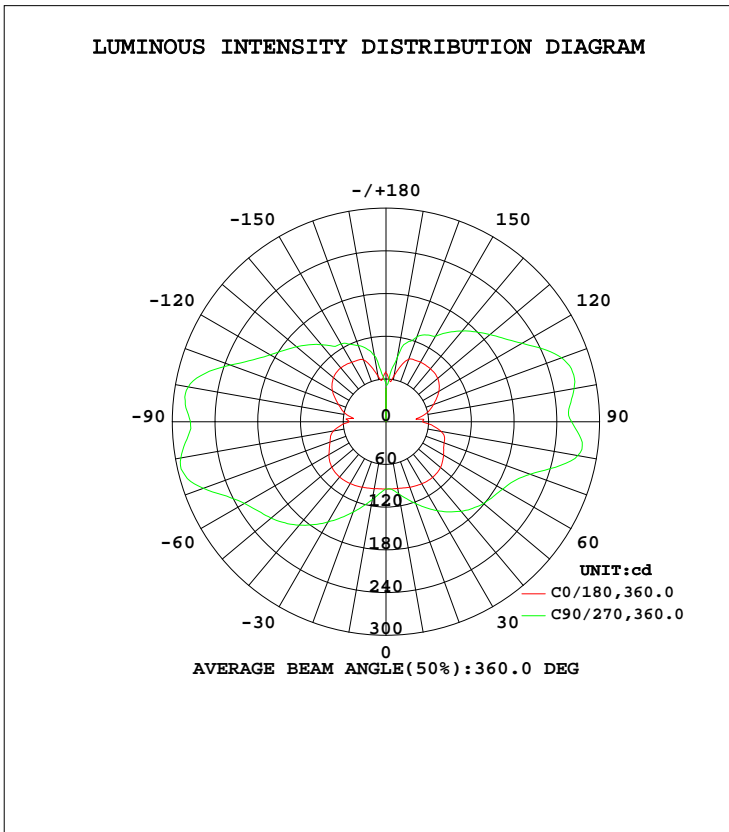


LUMINAIRE PHOTOMETRIC TEST REPORT

Test:U:120.1V I:0.2085A P:24.56W PF:0.9811 Lamp Flux:1875.11x1 lm		
NAME: ASD-LWS27-24D24CC 3000K	TYPE:N/A	WEIGHT:N/A
SPEC.:N/A	DIM.: N/A	SERIAL No.:N/A
MFR.: ASD Lighting corp	SUR.:N/A	Shielding Angle:N/A

DATA OF LAMP		PHOTOMETRIC DATA Eff: 76.35 lm/W			
MODEL	PSZ2S220624002-10	I <sub>max</sub> (cd)	295.3	S/MH(C0/180)	1.64
NOMINAL POWER(W)		LOR(%)	100.0	S/MH(C90/270)	2.39
RATED VOLTAGE(V)	120	TOTAL FLUX(lm)	1875.1	η UP, DN(C0-180)	23.4,27.2
NOMINAL FLUX(lm)	1875.11	CIE CLASS	DIFFUSE	η UP, DN(C180-360)	24.8,24.6
LAMPS INSIDE	1	η up(%)	48.1	CIBSE SHR NOM	2.00
TEST VOLTAGE(V)	120	η down(%)	51.9	CIBSE SHR MAX	0.00



C Range: 0 - 360DEG  
 C Interval: 22.5DEG  
 Test Speed: HIGH  
 Temperature:25.8DEG  
 Operators:Carl  
 Test Date:2022-06-24

γ Range: 0 - 180DEG  
 γ Interval: 1.0DEG  
 Test System:EVERFINE GO-R5000\_V2 SYSTEM V2.0.351  
 Humidity:42%  
 Test Distance:2.526m [K=1.0000]  
 Remarks:

ZONAL FLUX DIAGRAM

ZONAL FLUX DIAGRAM:

γ	C0	C45	C90	C135	C180	C225	C270	C315	γ	Φ zone	Φ total	%lum, lamp
10	95.47	104.9	111.1	105.3	95.14	97.60	102.8	98.34	0- 10	9.366	9.366	0.50,0.50
20	97.77	120.8	134.9	121.9	97.95	110.5	122.2	112.3	10- 20	30.77	40.14	2.14,2.14
30	100.2	138.1	162.2	140.3	100.6	125.4	144.1	127.7	20- 30	56.97	97.11	5.18,5.18
40	101.5	153.2	189.5	157.5	102.1	139.1	164.4	142.1	30- 40	86.64	183.7	9.8,9.8
50	99.43	162.8	210.7	169.1	100.0	147.2	178.7	150.7	40- 50	115.8	299.5	16,16
60	92.72	166.2	229.5	174.3	93.46	149.3	189.4	153.1	50- 60	139.6	439.1	23.4,23.4
70	83.80	170.7	273.2	184.5	87.04	151.0	215.5	157.1	60- 70	159.8	599.0	31.9,31.9
80	75.09	174.5	292.4	191.7	78.70	164.1	273.5	174.1	70- 80	185.3	784.3	41.8,41.8
90	52.19	161.5	274.5	173.7	51.60	153.7	260.9	164.4	80- 90	188.2	972.4	51.9,51.9
100	55.44	165.6	282.0	175.0	53.64	162.0	268.3	172.0	90-100	181.7	1154	61.6,61.6
110	71.04	150.8	233.1	154.9	71.12	161.8	262.6	170.7	100-110	176.8	1331	71,71
120	86.92	137.9	188.0	140.0	85.98	151.3	220.7	158.1	110-120	151.3	1482	79,79
130	96.29	127.0	164.2	129.7	95.05	142.8	190.6	148.3	120-130	126.4	1609	85.8,85.8
140	98.89	120.5	141.5	119.9	97.23	129.1	166.3	134.0	130-140	102.3	1711	91.2,91.2
150	96.36	115.0	126.3	114.9	96.82	124.2	138.8	131.3	140-150	76.76	1788	95.3,95.3
160	92.71	103.5	113.8	106.3	93.27	102.6	126.9	123.0	150-160	52.75	1841	98.2,98.2
170	65.16	84.55	94.29	73.79	65.58	70.37	91.71	100.2	160-170	27.76	1868	99.6,99.6
180	70.36	64.43	53.16	58.06	68.54	65.44	50.40	51.92	170-180	6.819	1875	100,100
DEG	LUMINOUS INTENSITY:cd									UNIT:lm		

Conical surface Flux(90deg): 238.25 lm

%lum = 12.7%  
%lamp = 12.7%

Conical surface Flux(120deg): 439.14 lm

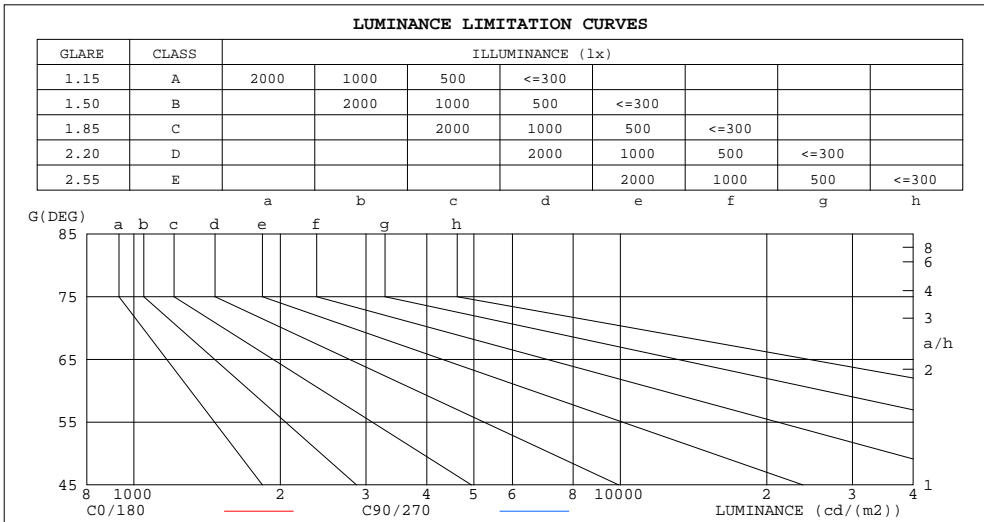
%lum = 23.4%  
%lamp = 23.4%

C Range: 0 - 360DEG  
C Interval: 22.5DEG  
Test Speed: HIGH  
Temperature:25.8DEG  
Operators:Carl  
Test Date:2022-06-24

γ Range: 0 - 180DEG  
γ Interval: 1.0DEG  
Test System:EVERFINE GO-R5000\_V2 SYSTEM V2.0.351  
Humidity:42%  
Test Distance:2.526m [K=1.0000]  
Remarks:

LUMINANCE LIMITATION CURVES

Test:U:120.1V I:0.2085A P:24.56W PF:0.9811 Lamp Flux:1875.11x1 lm		
NAME: ASD-LWS27-24D24CC 3000K	TYPE:N/A	WEIGHT:N/A
SPEC.:N/A	DIM.: N/A	SERIAL No.:N/A
MFR.: ASD Lighting corp	SUR.:N/A	Shielding Angle:N/A



LUMINANCE cd/(m2)		
G (DEG)	C0/180	C90/270
85	534693	2345306
80	314297	1227063
75	226734	821565
70	178080	582122
65	150990	426057
60	134776	334407
55	122515	277828
50	112422	238892
45	103802	206728

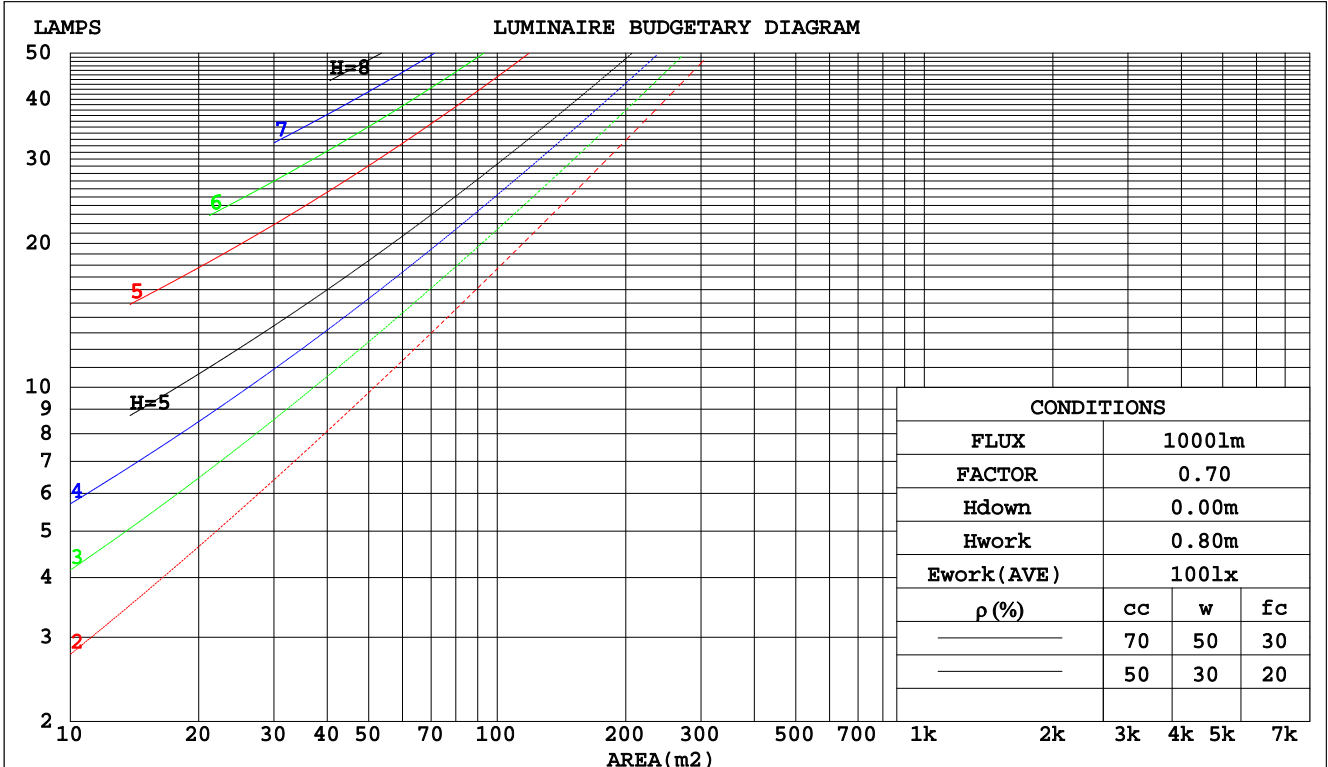
C Range: 0 - 360DEG  
 C Interval: 22.5DEG  
 Test Speed: HIGH  
 Temperature:25.8DEG  
 Operators:Carl  
 Test Date:2022-06-24

$\gamma$  Range: 0 - 180DEG  
 $\gamma$  Interval: 1.0DEG  
 Test System:EVERFINE GO-R5000\_V2 SYSTEM V2.0.351  
 Humidity:42%  
 Test Distance:2.526m [K=1.0000]  
 Remarks:

CU AND LUMINAIRE BUDGETARY ESTIMATE DIAGRAM

Test:U:120.1V I:0.2085A P:24.56W PF:0.9811 Lamp Flux:1875.1lx1 lm		
NAME: ASD-LWS27-24D24CC 3000K	TYPE:N/A	WEIGHT:N/A
SPEC.:N/A	DIM.: N/A	SERIAL No.:N/A
MFR.: ASD Lighting corp	SUR.:N/A	Shielding Angle:N/A

pcc	80%			70%			50%			30%			10%			0
	50%	30%	10%	50%	30%	10%	50%	30%	10%	50%	30%	10%	50%	30%	10%	0
pw																0
pfc	20%			20%			20%			20%			20%			0
RCR	RCR:Room Cavity Ratio						Coefficients of Utilization(CU)									
0.0	1.08	1.08	1.08	.99	.99	.99	.84	.84	.84	.71	.71	.71	.58	.58	.58	.52
1.0	.87	.81	.76	.80	.74	.70	.66	.62	.59	.54	.51	.49	.43	.41	.39	.33
2.0	.73	.65	.58	.67	.60	.53	.55	.50	.45	.45	.41	.37	.35	.32	.29	.24
3.0	.63	.53	.46	.57	.49	.42	.47	.41	.36	.38	.33	.29	.30	.26	.23	.18
4.0	.54	.45	.38	.50	.41	.35	.41	.34	.29	.33	.28	.24	.26	.22	.18	.14
5.0	.48	.38	.31	.44	.35	.29	.36	.29	.24	.29	.24	.20	.23	.19	.15	.12
6.0	.43	.33	.27	.39	.31	.25	.32	.26	.21	.26	.21	.17	.20	.16	.13	.10
7.0	.38	.29	.23	.35	.27	.21	.29	.22	.18	.23	.18	.14	.18	.14	.11	.08
8.0	.34	.26	.20	.32	.24	.18	.26	.20	.15	.21	.16	.12	.17	.13	.10	.07
9.0	.31	.23	.17	.29	.21	.16	.24	.18	.13	.19	.14	.11	.15	.11	.08	.06
10.0	.28	.21	.15	.26	.19	.14	.22	.16	.12	.18	.13	.10	.14	.10	.07	.05



C Range: 0 - 360DEG  
 C Interval: 22.5DEG  
 Test Speed: HIGH  
 Temperature: 25.8DEG  
 Operators: Carl  
 Test Date: 2022-06-24

γ Range: 0 - 180DEG  
 γ Interval: 1.0DEG  
 Test System: EVERFINE GO-R5000\_V2 SYSTEM V2.0.351  
 Humidity: 42%  
 Test Distance: 2.526m [K=1.0000]  
 Remarks:

WEC AND CCEC

Test:U:120.1V I:0.2085A P:24.56W PF:0.9811 Lamp Flux:1875.11x1 lm		
NAME: ASD-LWS27-24D24CC 3000K	TYPE:N/A	WEIGHT:N/A
SPEC.:N/A	DIM.: N/A	SERIAL No.:N/A
MFR.: ASD Lighting corp	SUR.:N/A	Shielding Angle:N/A

ρcc	80%			70%			50%			30%			10%			0
ρw	50%	30%	10%	50%	30%	10%	50%	30%	10%	50%	30%	10%	50%	30%	10%	0
ρfc	20%			20%			20%			20%			20%			0
RCR	RCR:Room Cavity Ratio						Wall Exitance Coefficients(WEC)									
0.0																
1.0	.418	.238	.075	.396	.226	.072	.355	.204	.065	.318	.183	.059	.283	.164	.053	
2.0	.348	.191	.058	.328	.181	.056	.290	.161	.050	.256	.144	.045	.224	.127	.040	
3.0	.303	.161	.048	.284	.152	.046	.250	.136	.041	.218	.120	.037	.189	.105	.032	
4.0	.269	.140	.041	.252	.132	.039	.221	.117	.035	.191	.103	.031	.164	.089	.027	
5.0	.242	.123	.036	.227	.116	.034	.198	.103	.030	.171	.090	.027	.146	.078	.023	
6.0	.220	.111	.032	.206	.104	.030	.180	.092	.027	.155	.080	.024	.131	.069	.021	
7.0	.202	.100	.028	.189	.094	.027	.165	.083	.024	.142	.073	.021	.120	.062	.018	
8.0	.187	.091	.026	.175	.086	.024	.152	.076	.022	.130	.066	.019	.110	.057	.016	
9.0	.174	.084	.023	.162	.079	.022	.141	.070	.020	.121	.061	.017	.102	.052	.015	
10.0	.162	.078	.022	.152	.073	.020	.132	.065	.018	.113	.056	.016	.095	.048	.014	

ρcc	80%			70%			50%			30%			10%			0
ρw	50%	30%	10%	50%	30%	10%	50%	30%	10%	50%	30%	10%	50%	30%	10%	0
ρfc	20%			20%			20%			20%			20%			0
RCR	RCR:Room Cavity Ratio						Ceiling Cavity Exitance Coefficients(CCEC)									
0.0	.557	.557	.557	.476	.476	.476	.325	.325	.325	.187	.187	.187	.060	.060	.060	
1.0	.558	.525	.496	.477	.451	.427	.326	.310	.295	.188	.179	.172	.060	.058	.055	
2.0	.552	.504	.464	.473	.434	.401	.324	.300	.279	.187	.175	.164	.060	.056	.053	
3.0	.545	.489	.444	.467	.422	.385	.321	.293	.270	.185	.171	.159	.060	.056	.052	
4.0	.538	.477	.431	.461	.412	.375	.317	.287	.264	.184	.168	.156	.059	.055	.051	
5.0	.530	.468	.423	.455	.405	.368	.314	.283	.260	.182	.166	.154	.059	.054	.051	
6.0	.523	.461	.417	.449	.399	.363	.310	.279	.257	.180	.164	.153	.058	.054	.050	
7.0	.516	.455	.412	.444	.394	.359	.307	.276	.254	.178	.163	.151	.058	.053	.050	
8.0	.510	.450	.409	.439	.390	.356	.304	.274	.253	.177	.162	.151	.057	.053	.050	
9.0	.503	.445	.406	.434	.386	.354	.300	.272	.251	.175	.160	.150	.057	.053	.050	
10.0	.498	.441	.404	.429	.383	.352	.298	.270	.250	.174	.159	.149	.056	.052	.050	

C Range: 0 - 360DEG  
 C Interval: 22.5DEG  
 Test Speed: HIGH  
 Temperature:25.8DEG  
 Operators:Carl  
 Test Date:2022-06-24

γ Range: 0 - 180DEG  
 γ Interval: 1.0DEG  
 Test System:EVERFINE GO-R5000\_V2 SYSTEM V2.0.351  
 Humidity:42%  
 Test Distance:2.526m [K=1.0000]  
 Remarks:

UGR(Unified Glare Rating) Table

Test:U:120.1V I:0.2085A P:24.56W PF:0.9811 Lamp Flux:1875.1lx1 lm										
NAME: ASD-LWS27-24D24CC 3000K					TYPE:N/A			WEIGHT:N/A		
SPEC.:N/A					DIM.: N/A			SERIAL No.:N/A		
MFR.: ASD Lighting corp					SUR.:N/A			Shielding Angle:N/A		
ceiling/cavity	0.7	0.7	0.5	0.5	0.3	0.7	0.7	0.5	0.5	0.3
walls	0.5	0.3	0.5	0.3	0.3	0.5	0.3	0.5	0.3	0.3
working plane	0.2	0.2	0.2	0.2	0.2	0.2	0.2	0.2	0.2	0.2
Room dimensions	Viewed crosswise					Viewed endwise				
x = 2H y = 2H	26.3	27.4	27.1	28.3	29.4	30.1	31.3	31.0	32.1	33.3
3H	28.7	29.7	29.6	30.6	31.8	34.2	35.2	35.0	36.1	37.2
4H	30.1	31.1	31.0	32.0	33.2	36.5	37.4	37.4	38.3	39.5
6H	31.6	32.5	32.5	33.5	34.6	38.9	39.8	39.8	40.7	41.9
8H	32.4	33.3	33.3	34.2	35.4	40.1	41.0	41.0	41.9	43.1
12H	33.2	34.1	34.1	35.0	36.2	41.5	42.3	42.4	43.2	44.4
4H 2H	28.2	29.2	29.1	30.1	31.3	30.7	31.7	31.6	32.6	33.8
3H	30.8	31.6	31.7	32.5	33.7	34.9	35.8	35.8	36.7	37.9
4H	32.2	33.0	33.1	33.9	35.1	37.4	38.2	38.4	39.1	40.4
6H	33.7	34.4	34.7	35.4	36.6	40.0	40.7	41.0	41.7	43.0
8H	34.5	35.2	35.5	36.1	37.4	41.4	42.0	42.3	43.0	44.3
12H	35.4	35.9	36.3	36.9	38.2	42.9	43.5	43.8	44.4	45.7
8H 4H	33.9	34.5	34.9	35.5	36.8	37.7	38.4	38.7	39.4	40.6
6H	35.7	36.2	36.6	37.2	38.5	40.6	41.2	41.6	42.2	43.5
8H	36.5	37.0	37.5	38.0	39.4	42.2	42.7	43.2	43.7	45.0
12H	37.5	37.9	38.5	38.9	40.3	44.0	44.4	45.0	45.4	46.7
12H 4H	34.6	35.2	35.5	36.1	37.4	37.8	38.3	38.7	39.3	40.6
6H	36.5	37.0	37.5	38.0	39.3	40.7	41.2	41.7	42.2	43.6
8H	37.5	37.9	38.5	39.0	40.3	42.4	42.8	43.4	43.9	45.2
Variations with the observer position at spacings:										
S = 1.0H	+ 0.1 / - 0.1					+ 0.1 / - 0.1				
1.5H	+ 0.2 / - 0.2					+ 0.2 / - 0.3				
2.0H	+ 0.3 / - 0.4					+ 0.3 / - 0.3				

CIE Pub.117 Corrected 1875 lm Total Lamp Luminous Flux.(8log(F/F0) = 2.2)

C Range: 0 - 360DEG  
 C Interval: 22.5DEG  
 Test Speed: HIGH  
 Temperature:25.8DEG  
 Operators:Carl  
 Test Date:2022-06-24

γ Range: 0 - 180DEG  
 γ Interval: 1.0DEG  
 Test System:EVERFINE GO-R5000\_V2 SYSTEM V2.0.351  
 Humidity:42%  
 Test Distance:2.526m [K=1.0000]  
 Remarks:

UTILIZATION FACTORS TABLE

Test:U:120.1V I:0.2085A P:24.56W PF:0.9811 Lamp Flux:1875.11x1 lm		
NAME: ASD-LWS27-24D24CC 3000K	TYPE:N/A	WEIGHT:N/A
SPEC.:N/A	DIM.: N/A	SERIAL No.:N/A
MFR.: ASD Lighting corp	SUR.:N/A	Shielding Angle:N/A

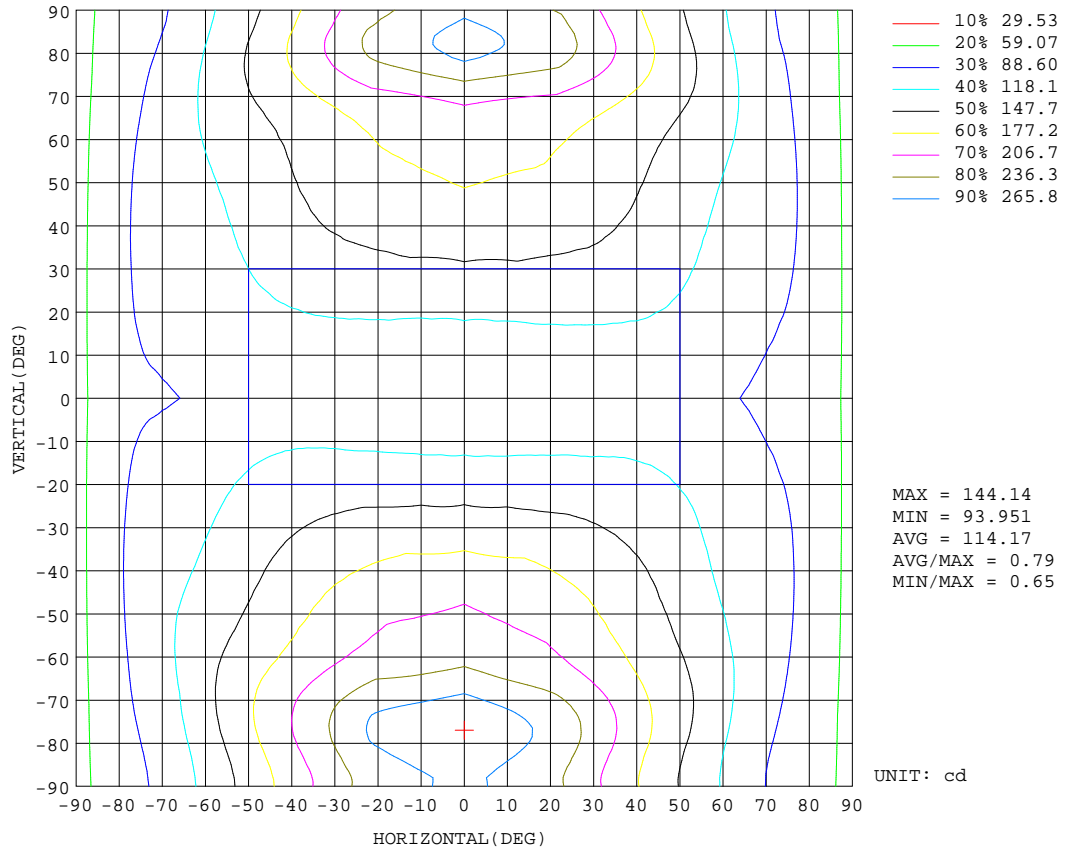
REFLECTANCE										
Ceiling	0.8	0.8	0.8	0.7	0.7	0.7	0.5	0.5	0.5	0
Walls	0.7	0.5	0.3	0.7	0.5	0.3	0.7	0.5	0.3	0
Working plane	0.2	0.2	0.2	0.2	0.2	0.2	0.2	0.2	0.2	0
ROOM INDEX	UTILIZATION FACTORS(PERCENT) $k(RI) \times RCR = 5$									
k = 0.60	36	23	16	34	22	15	31	20	14	7
0.80	44	31	22	42	29	21	37	26	19	10
1.00	52	37	28	48	35	27	42	33	24	13
1.25	58	44	35	54	42	33	47	37	29	16
1.50	64	50	40	59	47	38	51	41	33	18
2.00	72	59	49	66	55	46	57	47	40	22
2.50	77	65	55	71	60	52	60	52	45	25
3.00	81	70	61	75	65	57	63	56	49	28
4.00	86	76	68	79	71	64	67	61	55	31
5.00	89	81	74	83	75	69	70	64	59	34
ROOM INDEX	UF(total)									Direct
According to DIN EN 13032-2 2004			Suspended				SHRNOM = 1.25			

C Range: 0 - 360DEG  
 C Interval: 22.5DEG  
 Test Speed: HIGH  
 Temperature:25.8DEG  
 Operators:Carl  
 Test Date:2022-06-24

$\gamma$  Range: 0 - 180DEG  
 $\gamma$  Interval: 1.0DEG  
 Test System:EVERFINE GO-R5000\_V2 SYSTEM V2.0.351  
 Humidity:42%  
 Test Distance:2.526m [K=1.0000]  
 Remarks:

ISOCANDELA DIAGRAM

Test:U:120.1V I:0.2085A P:24.56W PF:0.9811 Lamp Flux:1875.11x1 lm		
NAME: ASD-LWS27-24D24CC 3000K	TYPE:N/A	WEIGHT:N/A
SPEC.:N/A	DIM.: N/A	SERIAL No.:N/A
MFR.: ASD Lighting corp	SUR.:N/A	Shielding Angle:N/A



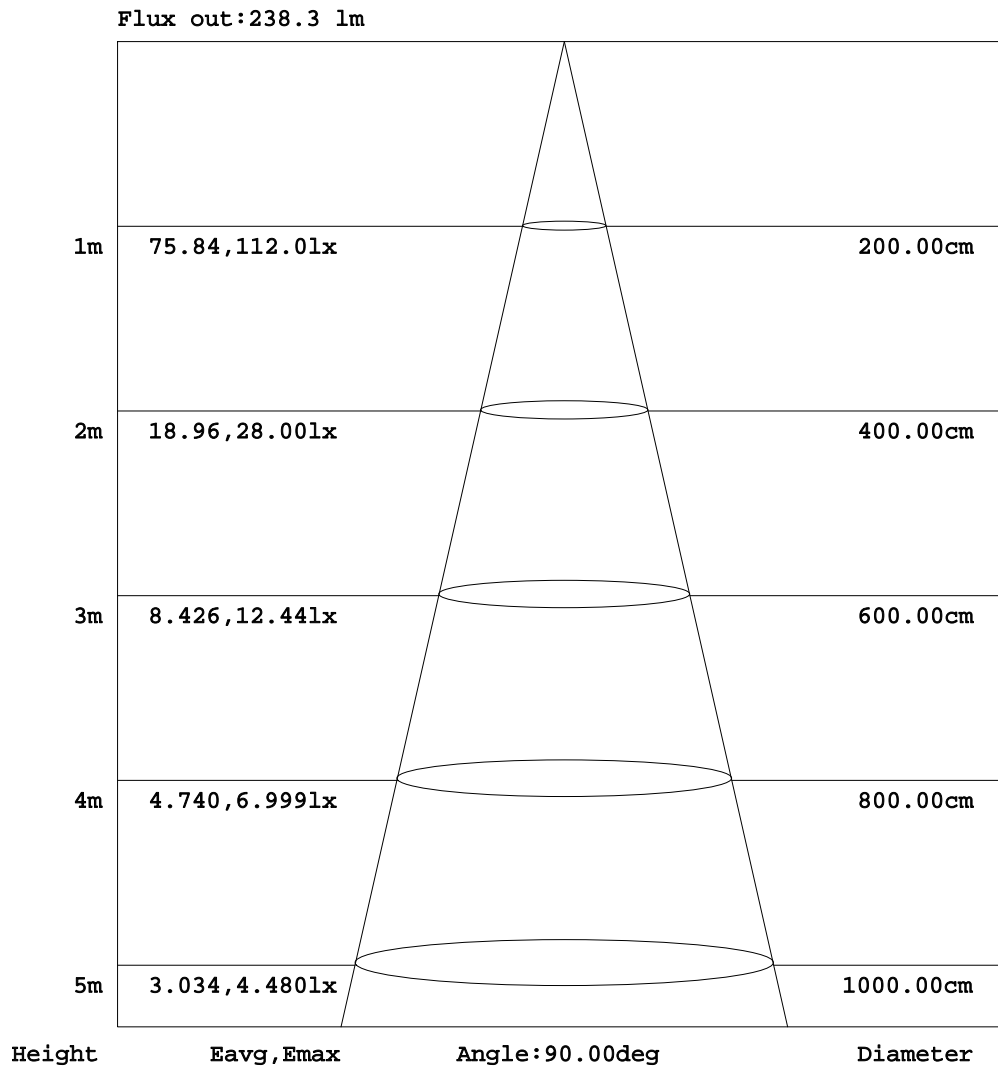
C Range: 0 - 360DEG  
 C Interval: 22.5DEG  
 Test Speed: HIGH  
 Temperature:25.8DEG  
 Operators:Carl  
 Test Date:2022-06-24

γ Range: 0 - 180DEG  
 γ Interval: 1.0DEG  
 Test System:EVERFINE GO-R5000\_V2 SYSTEM V2.0.351  
 Humidity:42%  
 Test Distance:2.526m [K=1.0000]  
 Remarks:



AAI Figure

Test:U:120.1V I:0.2085A P:24.56W PF:0.9811 Lamp Flux:1875.11x1 lm		
NAME: ASD-LWS27-24D24CC 3000K	TYPE:N/A	WEIGHT:N/A
SPEC.:N/A	DIM.: N/A	SERIAL No.:N/A
MFR.: ASD Lighting corp	SUR.:N/A	Shielding Angle:N/A



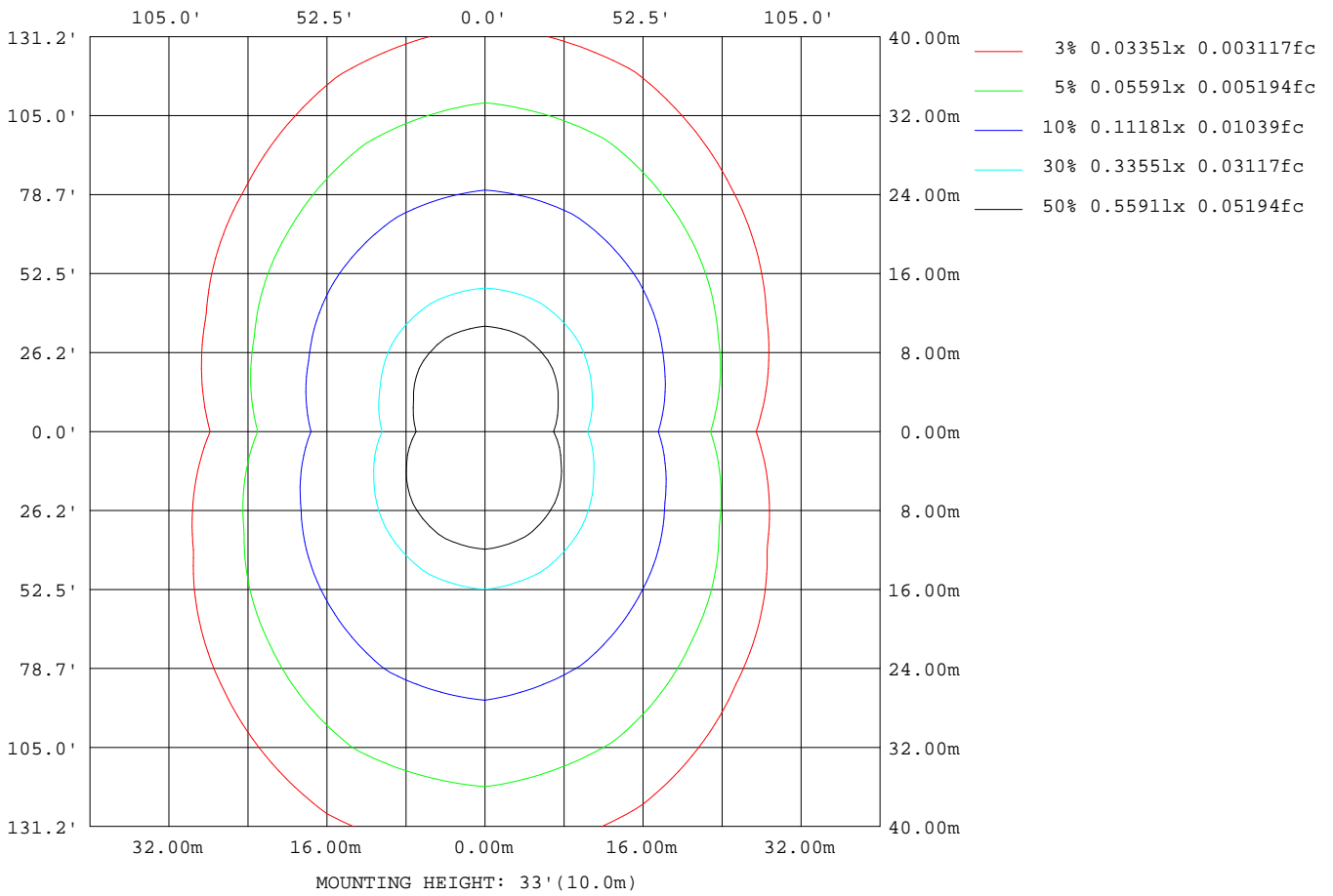
Note:The Curves indicate the illuminated area and the average illumination when the luminaire is at different distance.

C Range: 0 - 360DEG  
 C Interval: 22.5DEG  
 Test Speed: HIGH  
 Temperature:25.8DEG  
 Operators:Carl  
 Test Date:2022-06-24

γ Range: 0 - 180DEG  
 γ Interval: 1.0DEG  
 Test System:EVERFINE GO-R5000\_V2 SYSTEM V2.0.351  
 Humidity:42%  
 Test Distance:2.526m [K=1.0000]  
 Remarks:

**ISOLUX DIAGRAM**

Test:U:120.1V I:0.2085A P:24.56W PF:0.9811 Lamp Flux:1875.11x1 lm		
NAME: ASD-LWS27-24D24CC 3000K	TYPE:N/A	WEIGHT:N/A
SPEC.:N/A	DIM.: N/A	SERIAL No.:N/A
MFR.: ASD Lighting corp	SUR.:N/A	Shielding Angle:N/A



C Range: 0 - 360DEG  
 C Interval: 22.5DEG  
 Test Speed: HIGH  
 Temperature:25.8DEG  
 Operators:Carl  
 Test Date:2022-06-24

$\gamma$  Range: 0 - 180DEG  
 $\gamma$  Interval: 1.0DEG  
 Test System:EVERFINE GO-R5000\_V2 SYSTEM V2.0.351  
 Humidity:42%  
 Test Distance:2.526m [K=1.0000]  
 Remarks:

**LED Avg.L Report**

Test:U:120.1V I:0.2085A P:24.56W PF:0.9811 Lamp Flux:1875.11x1 lm		
NAME: ASD-LWS27-24D24CC 3000K	TYPE:N/A	WEIGHT:N/A
SPEC.:N/A	DIM.: N/A	SERIAL No.:N/A
MFR.: ASD Lighting corp	SUR.:N/A	Shielding Angle:N/A

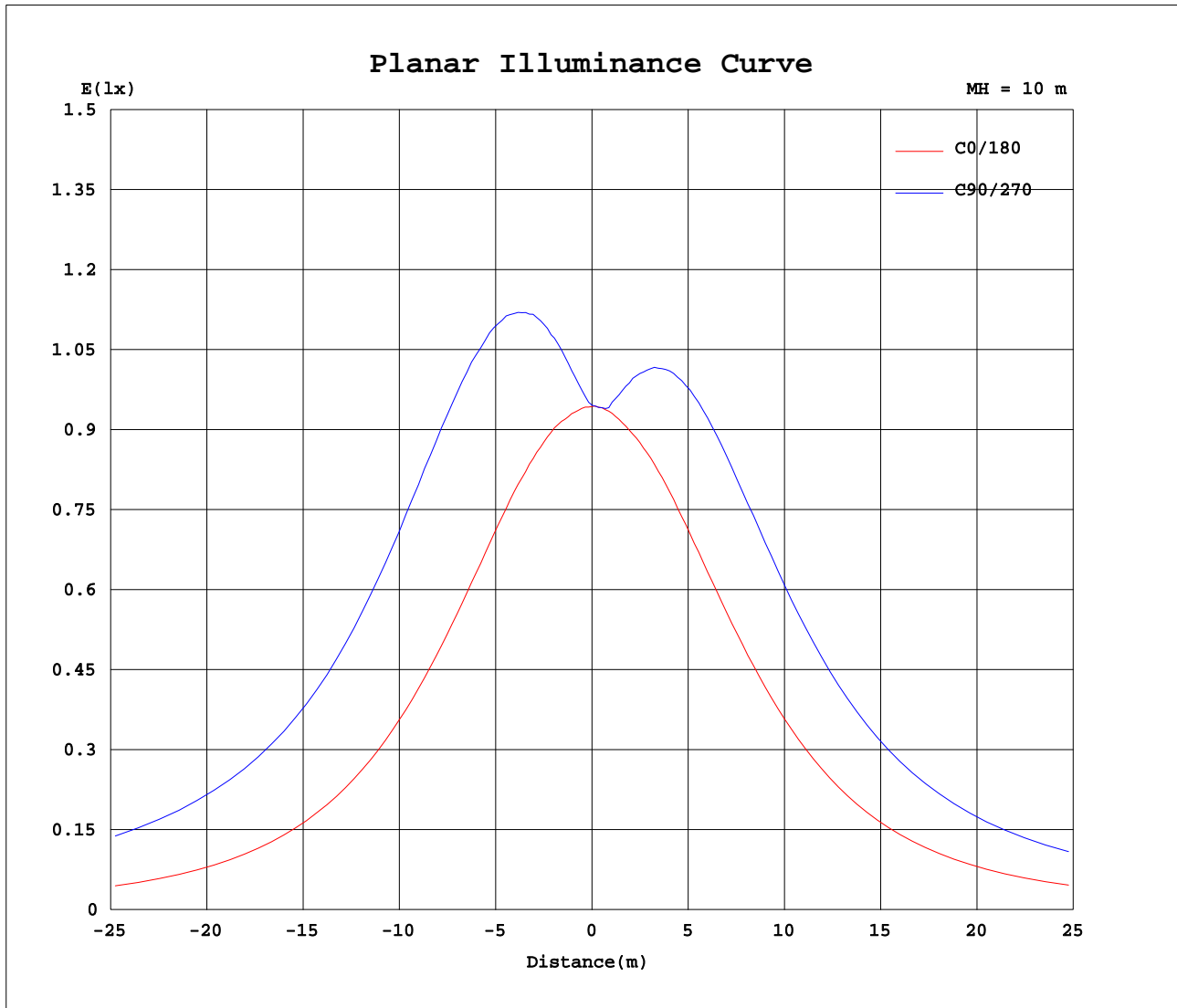
AvgL	cd/m2
L_0~180(65)av	152795
L_0~180(75)av	233599
L_0~180(85)av	544852
L_90~270(65)av	383561
L_90~270(75)av	758043
L_90~270(85)av	2321806
L_45(65)av	279702
L_45(75)av	485021
L_45(85)av	1427267

Standard: GB/T 29293-2012

C Range: 0 - 360DEG  
 C Interval: 22.5DEG  
 Test Speed: HIGH  
 Temperature:25.8DEG  
 Operators:Carl  
 Test Date:2022-06-24

γ Range: 0 - 180DEG  
 γ Interval: 1.0DEG  
 Test System:EVERFINE GO-R5000\_V2 SYSTEM V2.0.351  
 Humidity:42%  
 Test Distance:2.526m [K=1.0000]  
 Remarks:

Planar Illuminance Curve



C Range: 0 - 360DEG  
 C Interval: 22.5DEG  
 Test Speed: HIGH  
 Temperature: 25.8DEG  
 Operators: Carl  
 Test Date: 2022-06-24

$\gamma$  Range: 0 - 180DEG  
 $\gamma$  Interval: 1.0DEG  
 Test System: EVERFINE GO-R5000\_V2 SYSTEM V2.0.351  
 Humidity: 42%  
 Test Distance: 2.526m [K=1.0000]  
 Remarks:

LUMINOUS DISTRIBUTION INTENSITY DATA

Test:U:120.1V I:0.2085A P:24.56W PF:0.9811 Lamp Flux:1875.1lx1 lm		
NAME: ASD-LWS27-24D24CC 3000K	TYPE:N/A	WEIGHT:N/A
SPEC.:N/A	DIM.: N/A	SERIAL No.:N/A
MFR.: ASD Lighting corp	SUR.:N/A	Shielding Angle:N/A

Table--1

UNIT: cd

C( DEG) γ (DEG)	0	22.5	45	67.5	90	112.5	135	157.5	180	202.5	225	247.5	270	292.5	315	337.5			
0	94.6	94.6	94.6	94.6	94.6	94.6	94.6	94.6	94.6	94.6	94.6	94.6	94.6	94.6	94.6	94.6			
5	94.6	96.3	98.3	100	101	101	98.8	96.3	94.8	94.3	94.4	94.5	95.2	95.1	94.4	94.5			
10	95.5	99.3	105	109	111	110	105	99.8	95.1	94.7	97.6	101	103	102	98.3	95.2			
15	96.4	104	113	119	123	120	113	105	96.3	97.2	103	109	112	110	105	98.2			
20	97.8	108	121	130	135	131	122	109	97.9	101	110	118	122	120	112	102			
25	99.2	113	129	142	148	143	131	114	99.2	105	118	128	133	130	120	107			
30	100	117	138	155	162	157	140	119	101	109	125	138	144	140	128	111			
35	101	121	146	167	176	169	149	124	102	113	133	148	155	150	135	115			
40	102	124	153	178	190	181	158	128	102	116	139	156	164	158	142	119			
45	101	126	159	187	201	191	164	131	101	118	144	164	172	166	147	121			
50	99.4	126	163	195	211	200	169	132	100	119	147	169	179	172	151	122			
55	96.7	125	165	201	219	207	172	131	97.1	119	149	173	184	176	153	122			
60	92.7	123	166	208	229	215	174	129	93.5	117	149	176	189	180	153	120			
65	87.8	119	168	218	247	229	178	127	89.5	114	149	182	198	186	154	118			
70	83.8	116	171	235	273	249	184	126	87.0	112	151	193	216	199	157	115			
75	80.7	114	175	251	292	266	192	126	85.2	112	157	214	247	222	165	114			
80	75.1	109	175	253	292	266	192	121	78.7	108	164	236	273	245	174	113			
85	64.1	99.2	166	243	281	255	181	110	66.2	99.7	163	238	275	246	173	106			
90	52.2	93.2	162	237	275	248	174	101	51.6	90.9	154	226	261	234	164	98.3			
95	51.9	98.6	165	244	283	253	176	105	42.2	95.3	155	225	259	233	166	103			
100	55.4	102	166	242	282	251	175	108	53.6	103	162	233	268	241	172	109			
105	64.0	100	159	228	263	235	166	106	63.6	103	165	235	271	243	174	110			
110	71.0	96.6	151	205	233	210	155	102	71.1	102	162	228	263	236	171	108			
115	79.1	96.1	143	186	206	188	146	101	78.6	103	156	213	243	219	164	109			
120	86.9	97.9	138	173	188	174	140	100	86.0	103	151	197	221	203	158	109			
125	92.5	102	132	163	175	163	135	102	91.3	106	147	185	204	190	153	109			
130	96.3	104	127	153	164	154	130	104	95.1	111	143	175	191	179	148	113			
135	98.5	105	120	143	153	145	123	105	96.7	114	136	165	179	170	142	115			
140	98.9	105	121	134	142	135	120	106	97.2	113	129	155	166	159	134	117			
145	98.1	102	119	126	130	126	118	105	97.2	108	126	143	154	148	131	118			
150	96.4	98.8	115	124	126	124	115	101	96.8	103	124	134	139	137	131	118			
155	95.3	96.6	111	117	120	118	109	98.9	95.7	102	115	126	135	134	129	118			
160	92.7	92.2	103	112	114	113	106	92.6	93.3	95.4	103	120	127	129	123	115			
165	80.2	86.3	96.9	103	106	99.8	95.1	78.7	81.4	81.5	88.2	102	115	118	117	103			
170	65.2	80.1	84.5	95.2	94.3	82.8	73.8	67.0	65.6	65.7	70.4	81.2	91.7	104	100	92.9			
175	59.9	64.2	75.2	77.1	67.9	64.6	56.1	57.3	58.7	58.7	59.7	58.8	66.9	76.5	79.6	79.0			
180	70.4	67.6	64.4	51.0	53.2	53.1	58.1	68.6	68.5	68.6	65.4	56.8	50.4	33.2	51.9	60.6			

C Range: 0 - 360DEG  
 C Interval: 22.5DEG  
 Test Speed: HIGH  
 Temperature:25.8DEG  
 Operators:Carl  
 Test Date:2022-06-24

γ Range: 0 - 180DEG  
 γ Interval: 1.0DEG  
 Test System:EVERFINE GO-R5000\_V2 SYSTEM V2.0.351  
 Humidity:42%  
 Test Distance:2.526m [K=1.0000]  
 Remarks: