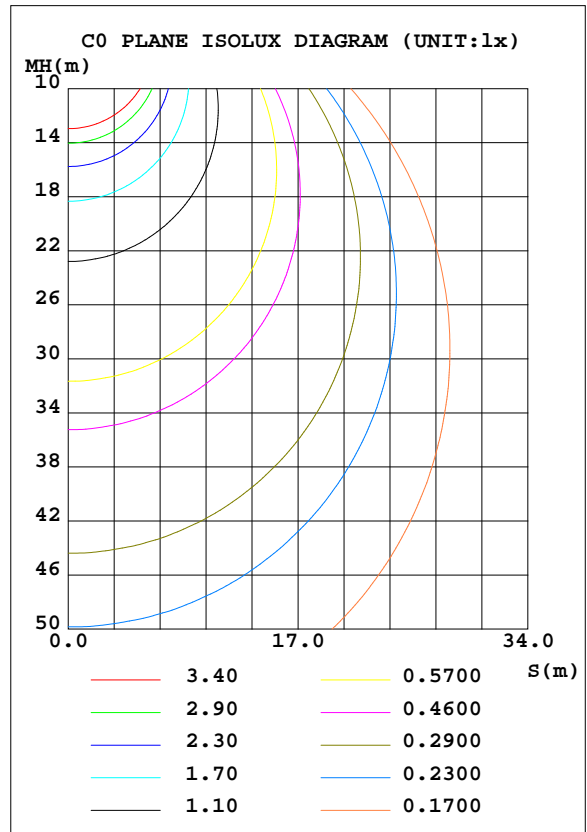
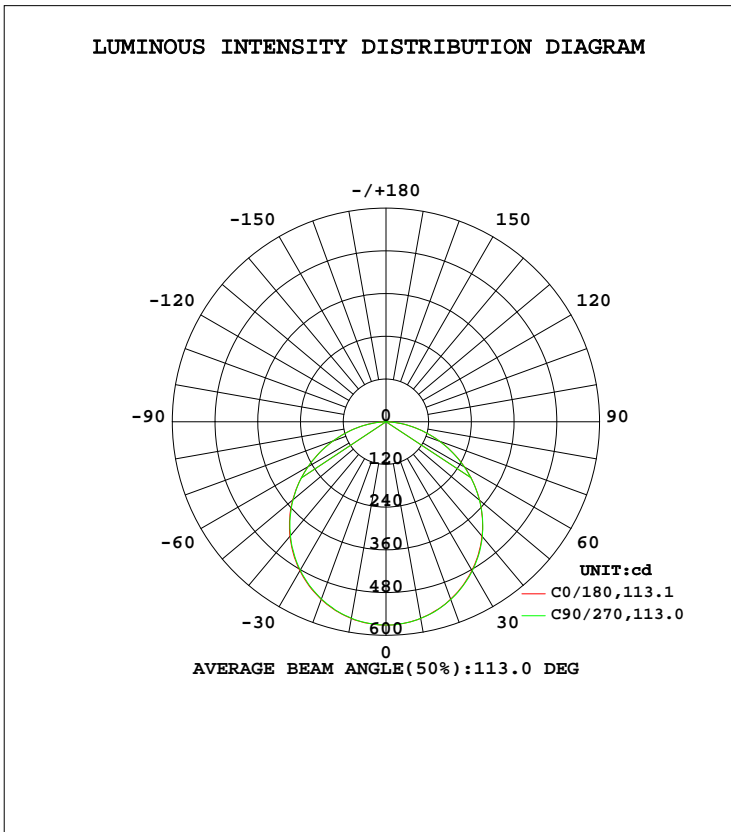


LUMINAIRE PHOTOMETRIC TEST REPORT

Test:U:120.07V I:0.1682A P:18.880W PF:0.9348 Freq:60.00Hz Lamp Flux:1644.78x1 lm		
NAME: LED Luminaire	TYPE: N/A	WEIGHT: N/A
SPEC.:ASD-MPR-9D18WH 5000K	DIM.: N/A	SERIAL No.: N/A
MFR.:ASD Lighting Corp	SUR.: N/A	Shielding Angle: N/A

DATA OF LAMP		PHOTOMETRIC DATA Eff: 87.12 lm/W			
MODEL	PSZ2GH240425003-10	I _{max} (cd)	571.2	S/MH(C0/180)	1.26
NOMINAL POWER(W)		LOR(%)	100.0	S/MH(C90/270)	1.26
RATED VOLTAGE(V)	120	TOTAL FLUX(lm)	1644.8	η UP, DN(C0-180)	0.1,49.8
NOMINAL FLUX(lm)	1644.78	CIE CLASS	DIRECT	η UP, DN(C180-360)	0.0,50.1
LAMPS INSIDE	1	η up(%)	0.1	CIBSE SHR NOM	1.25
TEST VOLTAGE(V)	120	η down(%)	99.9	CIBSE SHR MAX	1.35



C Range: 0 - 360DEG
 C Interval: 22.5DEG
 Test Speed: HIGH
 Temperature:25.0DEG
 Operators:Water
 Test Date:2024-05-03

γ Range: 0 - 180DEG
 γ Interval: 1.0DEG
 Test System:EVERFINE GO-R5000_V2 SYSTEM V2.00.446
 Humidity:39%
 Test Distance:2.519m [K=1.0000]
 Remarks:

ZONAL FLUX DIAGRAM

ZONAL FLUX DIAGRAM:

γ	C0	C45	C90	C135	C180	C225	C270	C315	γ	Φ zone	Φ total	%lum, lamp
10	561.2	560.6	560.0	559.9	561.3	560.5	560.8	561.6	0- 10	54.01	54.01	3.28,3.28
20	531.4	530.3	530.0	529.7	530.5	530.2	531.8	532.6	10- 20	154.7	208.7	12.7,12.7
30	483.3	481.4	481.6	481.4	482.7	481.7	484.3	485.9	20- 30	234.6	443.3	26.9,26.9
40	419.6	416.8	417.5	417.8	419.5	418.4	421.1	423.4	30- 40	283.3	726.5	44.2,44.2
50	342.2	340.0	340.8	341.2	343.4	341.3	342.8	345.7	40- 50	294.8	1021	62.1,62.1
60	253.1	252.1	253.0	253.2	255.1	252.6	254.2	256.6	50- 60	267.2	1289	78.3,78.3
70	158.6	158.6	158.3	157.8	160.7	159.4	160.3	162.0	60- 70	204.6	1493	90.8,90.8
80	67.05	67.25	66.26	65.42	68.12	67.83	68.27	69.47	70- 80	119.0	1612	98,98
90	0.1893	0.1403	0.1999	0.2050	0.1197	0.1291	0.1179	0.1333	80- 90	30.53	1643	99.9,99.9
100	0.1622	0.1595	0.1607	0.1608	0.0583	0.0612	0.0635	0.0668	90-100	0.1033	1643	99.9,99.9
110	0.2137	0.2107	0.2123	0.2137	0.1108	0.1130	0.1170	0.1146	100-110	0.1434	1643	99.9,99.9
120	0.2953	0.2920	0.2942	0.2969	0.1794	0.1800	0.1831	0.1813	110-120	0.1960	1643	99.9,99.9
130	0.4483	0.4466	0.4452	0.4472	0.2496	0.2503	0.2527	0.2534	120-130	0.2592	1643	99.9,99.9
140	0.7389	0.7392	0.7319	0.7330	0.3056	0.3085	0.3093	0.3096	130-140	0.3286	1644	99.9,99.9
150	1.051	1.050	1.040	1.050	0.3674	0.3736	0.3759	0.3751	140-150	0.3856	1644	100,100
160	1.248	1.256	1.253	1.253	0.4995	0.4961	0.5007	0.4965	150-160	0.3686	1644	100,100
170	1.143	1.160	1.158	1.140	0.6616	0.6416	0.6626	0.6592	160-170	0.2539	1645	100,100
180	0.9334	0.9324	0.9292	0.9292	0.9356	0.9351	0.9325	0.9319	170-180	0.0876	1645	100,100
DEG	LUMINOUS INTENSITY:cd									UNIT:lm		

Conical surface Flux(90deg): 874.97 lm

%lum = 53.2%
%lamp = 53.2%

Conical surface Flux(120deg): 1288.5 lm

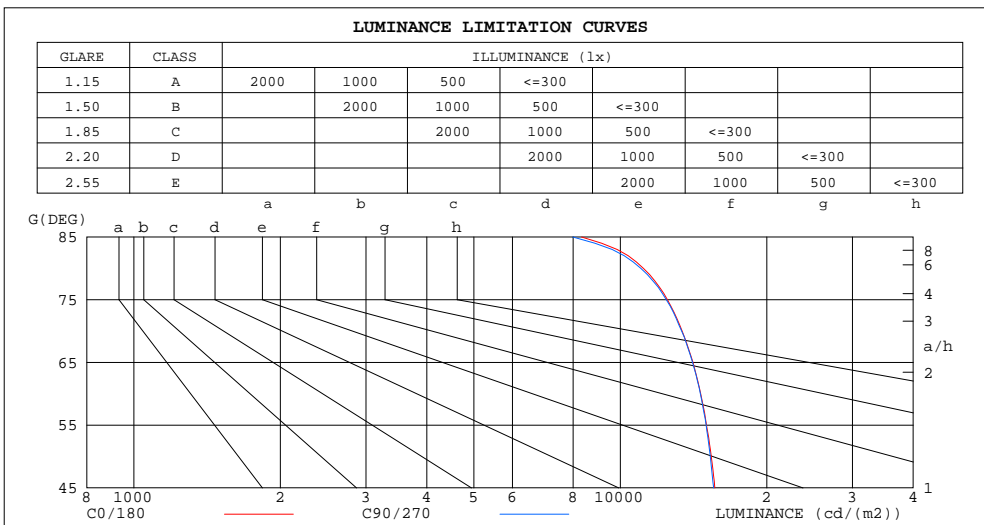
%lum = 78.3%
%lamp = 78.3%

C Range: 0 - 360DEG
C Interval: 22.5DEG
Test Speed: HIGH
Temperature:25.0DEG
Operators:Water
Test Date:2024-05-03

γ Range: 0 - 180DEG
γ Interval: 1.0DEG
Test System:EVERFINE GO-R5000_V2 SYSTEM V2.00.446
Humidity:39%
Test Distance:2.519m [K=1.0000]
Remarks:

LUMINANCE LIMITATION CURVES

Test:U:120.07V I:0.1682A P:18.880W PF:0.9348 Freq:60.00Hz Lamp Flux:1644.78x1 lm		
NAME: LED Luminaire	TYPE: N/A	WEIGHT: N/A
SPEC.: ASD-MPR-9D18WH 5000K	DIM.: N/A	SERIAL No.: N/A
MFR.:ASD Lighting Corp	SUR.: N/A	Shielding Angle: N/A



LUMINANCE cd/(m2)		
G (DEG)	C0/180	C90/270
85	8327	7988
80	11157	11020
75	12495	12429
70	13402	13369
65	14104	14070
60	14628	14610
55	15038	15011
50	15384	15310
45	15635	15552

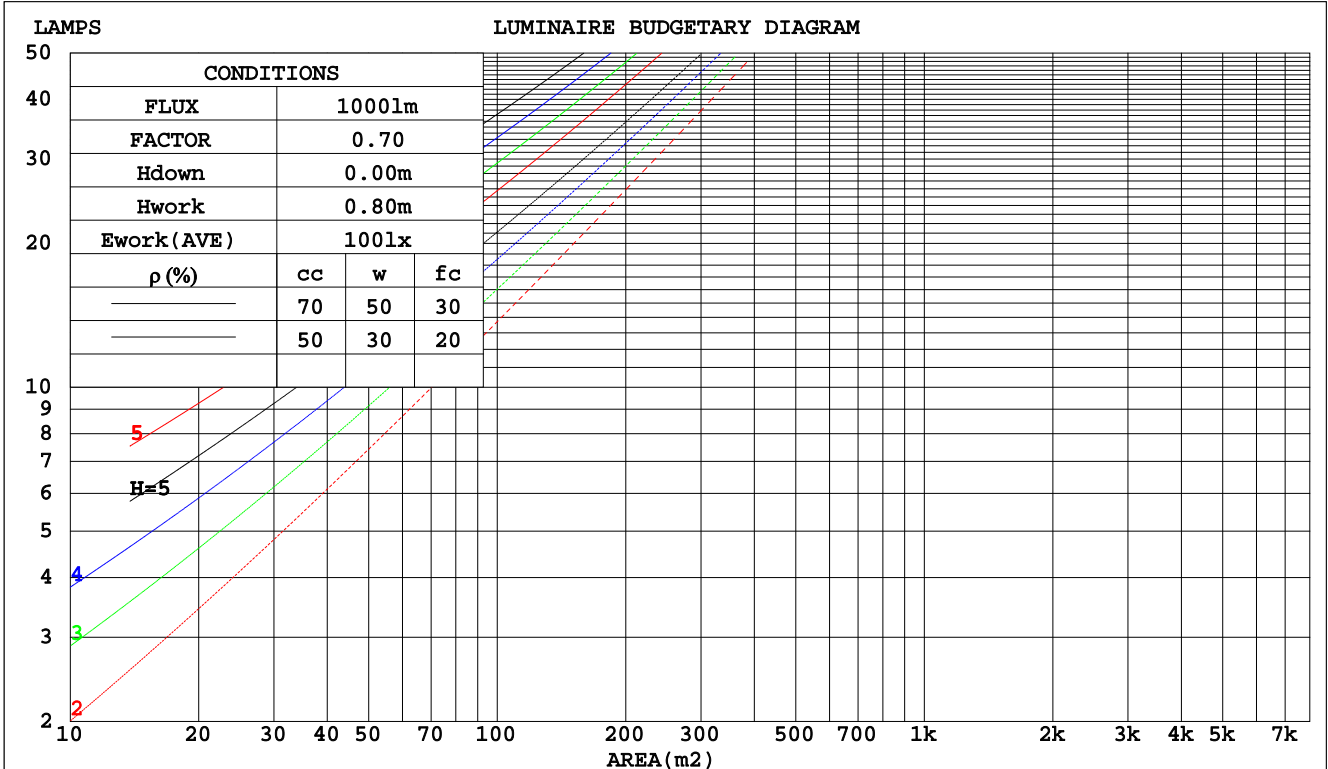
C Range: 0 - 360DEG
 C Interval: 22.5DEG
 Test Speed: HIGH
 Temperature:25.0DEG
 Operators:Water
 Test Date:2024-05-03

γ Range: 0 - 180DEG
 γ Interval: 1.0DEG
 Test System:EVERFINE GO-R5000_V2 SYSTEM V2.00.446
 Humidity:39%
 Test Distance:2.519m [K=1.0000]
 Remarks:

CU AND LUMINAIRE BUDGETARY ESTIMATE DIAGRAM

Test:U:120.07V I:0.1682A P:18.880W PF:0.9348 Freq:60.00Hz Lamp Flux:1644.78x1 lm		
NAME: LED Luminaire	TYPE: N/A	WEIGHT: N/A
SPEC.: ASD-MPR-9D18WH 5000K	DIM.: N/A	SERIAL No.: N/A
MFR.:ASD Lighting Corp	SUR.: N/A	Shielding Angle: N/A

pcc	80%			70%			50%			30%			10%			0
	50%	30%	10%	50%	30%	10%	50%	30%	10%	50%	30%	10%	50%	30%	10%	0
pw																0
pfc	20%			20%			20%			20%			20%			0
RCR	RCR:Room Cavity Ratio Coefficients of Utilization(CU)															
0.0	1.19	1.19	1.19	1.16	1.16	1.16	1.11	1.11	1.11	1.06	1.06	1.06	1.02	1.02	1.02	.00
1.0	1.04	.99	.96	1.01	.98	.94	.97	.94	.91	.93	.91	.88	.90	.87	.86	.83
2.0	.90	.83	.78	.88	.82	.77	.85	.79	.75	.81	.77	.73	.78	.75	.71	.69
3.0	.79	.71	.64	.78	.70	.64	.75	.68	.63	.72	.66	.61	.69	.64	.60	.58
4.0	.70	.61	.54	.69	.60	.54	.66	.59	.53	.64	.58	.52	.62	.56	.52	.50
5.0	.63	.53	.47	.61	.53	.46	.59	.52	.46	.57	.51	.45	.55	.50	.45	.43
6.0	.56	.47	.41	.55	.47	.41	.53	.46	.40	.52	.45	.40	.50	.44	.39	.37
7.0	.51	.42	.36	.50	.42	.36	.49	.41	.36	.47	.40	.35	.46	.40	.35	.33
8.0	.46	.38	.32	.46	.38	.32	.44	.37	.32	.43	.36	.31	.42	.36	.31	.29
9.0	.43	.34	.29	.42	.34	.29	.41	.34	.29	.40	.33	.28	.39	.33	.28	.26
10.0	.39	.31	.26	.39	.31	.26	.38	.31	.26	.37	.30	.26	.36	.30	.26	.24



C Range: 0 - 360DEG
 C Interval: 22.5DEG
 Test Speed: HIGH
 Temperature:25.0DEG
 Operators:Water
 Test Date:2024-05-03

γ Range: 0 - 180DEG
 γ Interval: 1.0DEG
 Test System:EVERFINE GO-R5000_V2 SYSTEM V2.00.446
 Humidity:39%
 Test Distance:2.519m [K=1.0000]
 Remarks:

WEC AND CCEC

Test:U:120.07V I:0.1682A P:18.880W PF:0.9348 Freq:60.00Hz		
Lamp Flux:1644.78x1 lm		
NAME: LED Luminaire	TYPE: N/A	WEIGHT: N/A
SPEC.:ASD-MPR-9D18WH 5000K	DIM.: N/A	SERIAL No.: N/A
MFR.: ASD Lighting Corp	SUR.: N/A	Shielding Angle: N/A

ρcc	80%			70%			50%			30%			10%			0
ρw	50%	30%	10%	50%	30%	10%	50%	30%	10%	50%	30%	10%	50%	30%	10%	0
ρfc	20%			20%			20%			20%			20%			0
RCR	RCR:Room Cavity Ratio						Wall Exitance Coefficients(WEC)									
0.0																
1.0	.311	.177	.056	.304	.173	.055	.291	.167	.053	.278	.161	.052	.267	.155	.050	
2.0	.293	.161	.049	.287	.158	.049	.275	.153	.047	.264	.148	.046	.254	.144	.045	
3.0	.271	.144	.043	.266	.142	.043	.255	.138	.042	.245	.135	.041	.237	.131	.041	
4.0	.250	.130	.038	.245	.128	.038	.236	.125	.037	.227	.122	.037	.219	.119	.036	
5.0	.231	.118	.034	.227	.116	.034	.219	.114	.034	.211	.111	.033	.204	.109	.033	
6.0	.214	.107	.031	.210	.106	.031	.203	.104	.030	.196	.102	.030	.190	.100	.030	
7.0	.199	.099	.028	.196	.098	.028	.189	.096	.028	.183	.094	.027	.177	.092	.027	
8.0	.186	.091	.026	.183	.090	.025	.177	.089	.025	.172	.087	.025	.167	.085	.025	
9.0	.174	.084	.024	.172	.084	.023	.166	.082	.023	.161	.081	.023	.157	.080	.023	
10.0	.164	.079	.022	.161	.078	.022	.157	.077	.022	.152	.076	.021	.148	.074	.021	

ρcc	80%			70%			50%			30%			10%			0
ρw	50%	30%	10%	50%	30%	10%	50%	30%	10%	50%	30%	10%	50%	30%	10%	0
ρfc	20%			20%			20%			20%			20%			0
RCR	RCR:Room Cavity Ratio						Ceiling Cavity Exitance Coefficients(CCEC)									
0.0	.191	.191	.191	.164	.164	.164	.112	.112	.112	.064	.064	.064	.021	.021	.021	
1.0	.181	.157	.135	.155	.135	.116	.106	.093	.081	.061	.054	.047	.020	.017	.015	
2.0	.173	.133	.099	.149	.114	.085	.102	.079	.060	.059	.046	.035	.019	.015	.011	
3.0	.166	.115	.075	.142	.099	.065	.098	.069	.046	.056	.040	.027	.018	.013	.009	
4.0	.158	.102	.059	.136	.088	.051	.093	.061	.036	.054	.036	.021	.017	.012	.007	
5.0	.151	.092	.048	.129	.079	.042	.089	.055	.030	.052	.033	.018	.017	.011	.006	
6.0	.143	.083	.040	.123	.072	.035	.085	.050	.025	.049	.030	.015	.016	.010	.005	
7.0	.137	.076	.034	.118	.066	.030	.081	.046	.021	.047	.027	.013	.015	.009	.004	
8.0	.130	.071	.030	.112	.061	.026	.078	.043	.018	.045	.025	.011	.015	.008	.004	
9.0	.124	.066	.026	.107	.057	.023	.074	.040	.016	.043	.024	.010	.014	.008	.003	
10.0	.118	.061	.023	.102	.053	.020	.071	.037	.015	.041	.022	.009	.013	.007	.003	

C Range: 0 - 360DEG
 C Interval: 22.5DEG
 Test Speed: HIGH
 Temperature:25.0DEG
 Operators:Water
 Test Date:2024-05-03

γ Range: 0 - 180DEG
 γ Interval: 1.0DEG
 Test System:EVERFINE GO-R5000_V2 SYSTEM V2.00.446
 Humidity:39%
 Test Distance:2.519m [K=1.0000]
 Remarks:

UGR(Unified Glare Rating) Table

Test:U:120.07V I:0.1682A P:18.880W PF:0.9348 Freq:60.00Hz Lamp Flux:1644.78x1 lm		
NAME: LED Luminaire	TYPE: N/A	WEIGHT: N/A
SPEC.:ASD-MPR-9D18WH 5000K	DIM.: N/A	SERIAL No.: N/A
MFR.: ASD Lighting Corp	SUR.: N/A	Shielding Angle: N/A

ceiling/cavity	0.7	0.7	0.5	0.5	0.3	0.7	0.7	0.5	0.5	0.3
walls	0.5	0.3	0.5	0.3	0.3	0.5	0.3	0.5	0.3	0.3
working plane	0.2	0.2	0.2	0.2	0.2	0.2	0.2	0.2	0.2	0.2
Room dimensions	Viewed crosswise					Viewed endwise				
x = 2H y = 2H	20.6	22.1	20.8	22.3	22.5	20.6	22.1	20.8	22.3	22.5
3H	22.1	23.5	22.4	23.8	24.0	22.1	23.5	22.4	23.7	24.0
4H	22.7	24.1	23.0	24.3	24.6	22.7	24.0	23.0	24.3	24.6
6H	23.2	24.4	23.5	24.7	25.0	23.1	24.4	23.5	24.7	25.0
8H	23.3	24.5	23.6	24.8	25.1	23.3	24.5	23.6	24.8	25.1
12H	23.4	24.5	23.7	24.8	25.1	23.3	24.5	23.7	24.8	25.1
4H 2H	21.2	22.5	21.5	22.8	23.0	21.2	22.5	21.5	22.8	23.0
3H	22.9	24.1	23.3	24.4	24.7	22.9	24.1	23.2	24.4	24.7
4H	23.6	24.7	24.0	25.0	25.4	23.6	24.7	24.0	25.0	25.4
6H	24.2	25.2	24.6	25.5	25.9	24.2	25.2	24.6	25.5	25.9
8H	24.4	25.3	24.8	25.7	26.0	24.4	25.3	24.8	25.6	26.0
12H	24.5	25.3	24.9	25.7	26.1	24.5	25.3	24.9	25.7	26.1
8H 4H	23.9	24.8	24.3	25.2	25.6	23.9	24.8	24.3	25.2	25.6
6H	24.6	25.4	25.1	25.8	26.2	24.6	25.4	25.1	25.8	26.2
8H	24.9	25.6	25.4	26.0	26.4	24.9	25.5	25.3	26.0	26.4
12H	25.1	25.6	25.6	26.1	26.6	25.0	25.6	25.5	26.1	26.5
12H 4H	23.9	24.8	24.4	25.1	25.5	23.9	24.7	24.4	25.1	25.5
6H	24.7	25.4	25.2	25.8	26.2	24.7	25.3	25.1	25.8	26.2
8H	25.0	25.6	25.5	26.0	26.5	25.0	25.5	25.5	26.0	26.5
Variations with the observer position at spacings(CIE Pub.117):										
S = 1.0H	+ 0.1 / - 0.2					+ 0.1 / - 0.2				
1.5H	+ 0.2 / - 0.3					+ 0.2 / - 0.3				
2.0H	+ 0.2 / - 0.3					+ 0.2 / - 0.3				

CIE Pub.117, 1645 lm Total Lamp Luminous Flux Correct (8log(F/F0) = 1.7)
Area: 0.0346185 m2

C Range: 0 - 360DEG
C Interval: 22.5DEG
Test Speed: HIGH
Temperature:25.0DEG
Operators:Water
Test Date:2024-05-03

γ Range: 0 - 180DEG
γ Interval: 1.0DEG
Test System:EVERFINE GO-R5000_V2 SYSTEM V2.00.446
Humidity:39%
Test Distance:2.519m [K=1.0000]
Remarks:

UTILIZATION FACTORS TABLE

Test:U:120.07V I:0.1682A P:18.880W PF:0.9348 Freq:60.00Hz Lamp Flux:1644.78x1 lm		
NAME: LED Luminaire	TYPE: N/A	WEIGHT: N/A
SPEC.:ASD-MPR-9D18WH 5000K	DIM.: N/A	SERIAL No.: N/A
MFR.:ASD Lighting Corp	SUR.: N/A	Shielding Angle: N/A

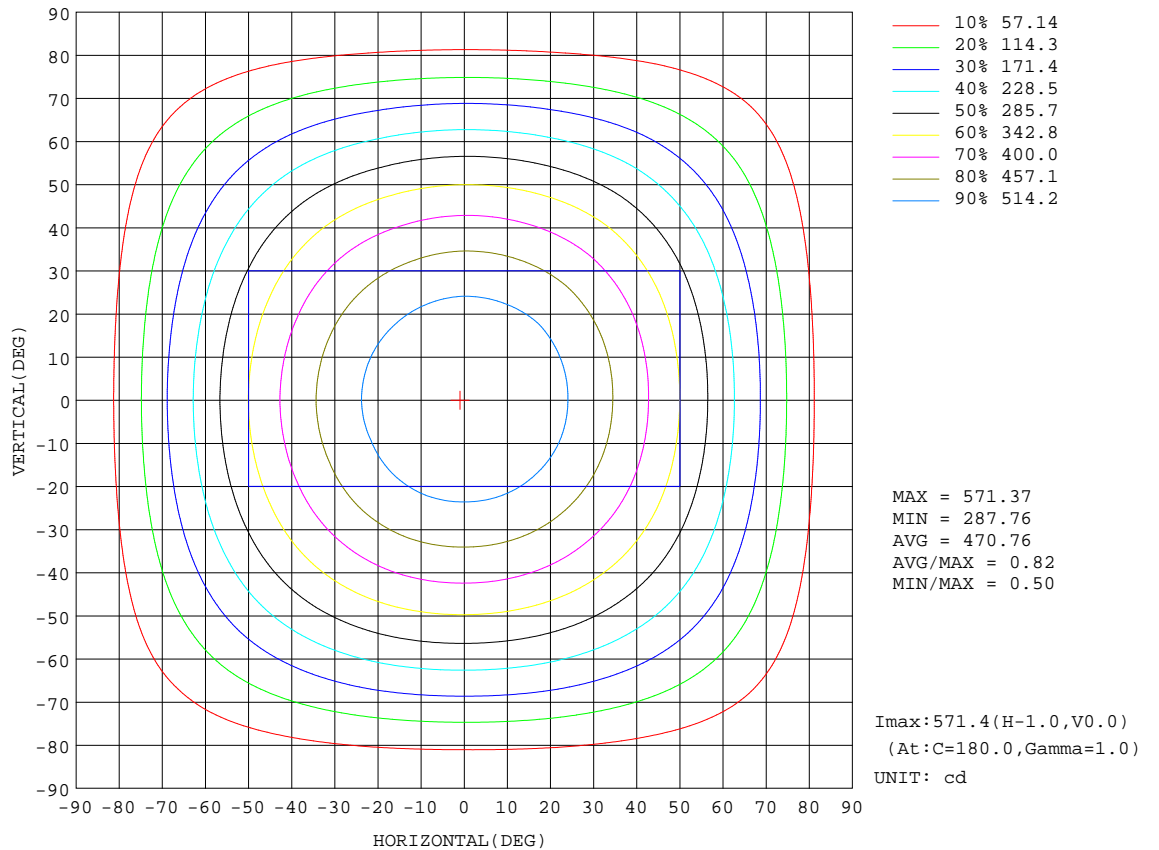
REFLECTANCE										
Ceiling	0.8	0.8	0.8	0.7	0.7	0.7	0.5	0.5	0.5	0
Walls	0.7	0.5	0.3	0.7	0.5	0.3	0.7	0.5	0.3	0
Working plane	0.2	0.2	0.2	0.2	0.2	0.2	0.2	0.2	0.2	0
ROOM INDEX	UTILIZATION FACTORS(PERCENT) $k(RI) \times RCR = 5$									
k = 0.60	57	46	39	57	45	39	55	45	38	32
0.80	67	56	48	66	55	48	64	54	48	41
1.00	76	65	57	75	64	57	72	65	56	49
1.25	83	72	65	81	72	65	79	70	64	56
1.50	88	78	71	86	77	70	83	75	69	62
2.00	95	86	80	93	85	79	89	83	77	69
2.50	99	91	85	97	89	84	93	87	82	74
3.00	102	95	90	100	94	89	96	91	86	78
4.00	106	100	96	104	99	94	99	95	92	83
5.00	109	104	100	106	102	98	102	98	95	86
ROOM INDEX	UF(total)									Direct
According to DIN EN 13032-2 2004			Suspended				SHRNOM = 1.25			

C Range: 0 - 360DEG
 C Interval: 22.5DEG
 Test Speed: HIGH
 Temperature:25.0DEG
 Operators:Water
 Test Date:2024-05-03

γ Range: 0 - 180DEG
 γ Interval: 1.0DEG
 Test System:EVERFINE GO-R5000_V2 SYSTEM V2.00.446
 Humidity:39%
 Test Distance:2.519m [K=1.0000]
 Remarks:

ISOCANDELA DIAGRAM

Test:U:120.07V I:0.1682A P:18.880W PF:0.9348 Freq:60.00Hz Lamp Flux:1644.78x1 lm		
NAME: LED Luminaire	TYPE: N/A	WEIGHT: N/A
SPEC.: :ASD-MPR-9D18WH 5000K	DIM.: N/A	SERIAL No.: N/A
MFR.: ASD Lighting Corp	SUR.: N/A	Shielding Angle: N/A



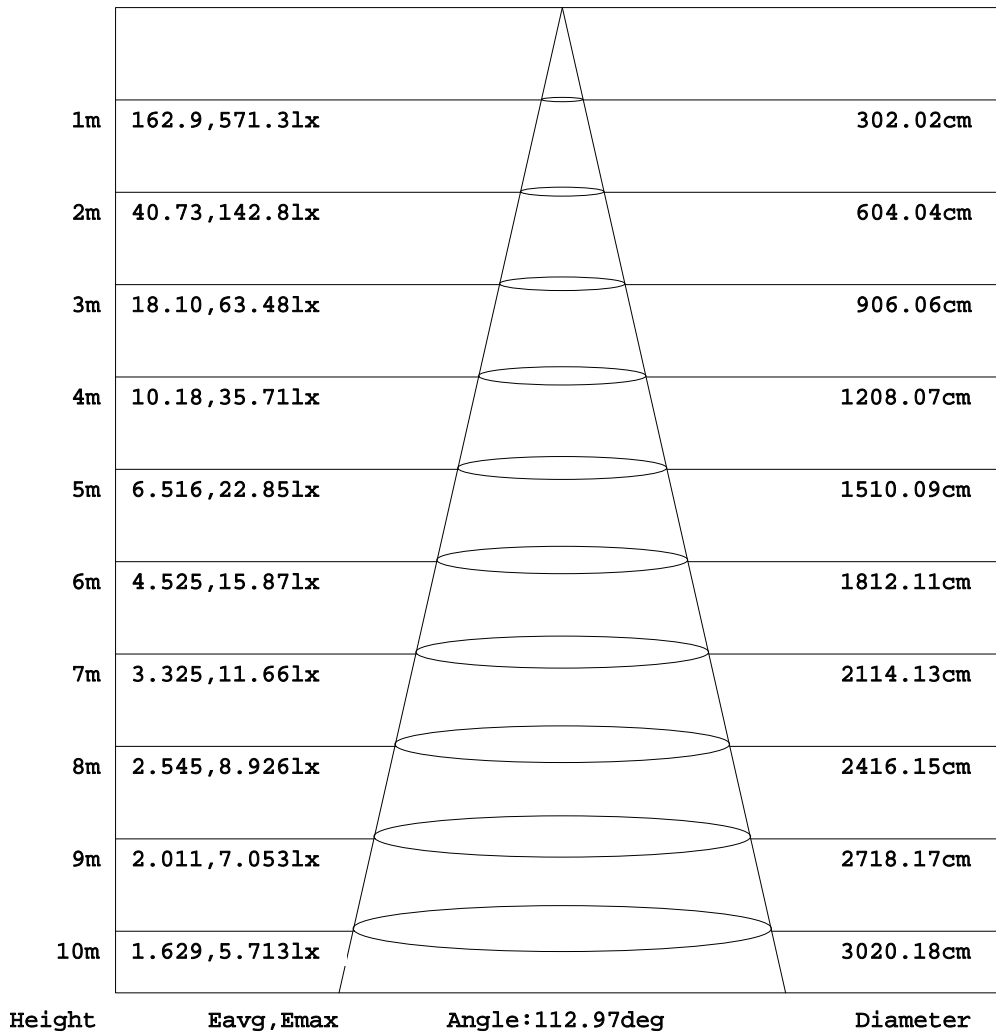
C Range: 0 - 360DEG
 C Interval: 22.5DEG
 Test Speed: HIGH
 Temperature: 25.0DEG
 Operators: Water
 Test Date: 2024-05-03

γ Range: 0 - 180DEG
 γ Interval: 1.0DEG
 Test System: EVERFINE GO-R5000_V2 SYSTEM V2.00.446
 Humidity: 39%
 Test Distance: 2.519m [K=1.0000]
 Remarks:

AAI Figure

Test:U:120.07V I:0.1682A P:18.880W PF:0.9348 Freq:60.00Hz Lamp Flux:1644.78x1 lm		
NAME: LED Luminaire	TYPE: N/A	WEIGHT: N/A
SPEC.: :ASD-MPR-9D18WH 5000K	DIM.: N/A	SERIAL No.: N/A
MFR.: ASD Lighting Corp	SUR.: N/A	Shielding Angle: N/A

Flux out:1214 lm



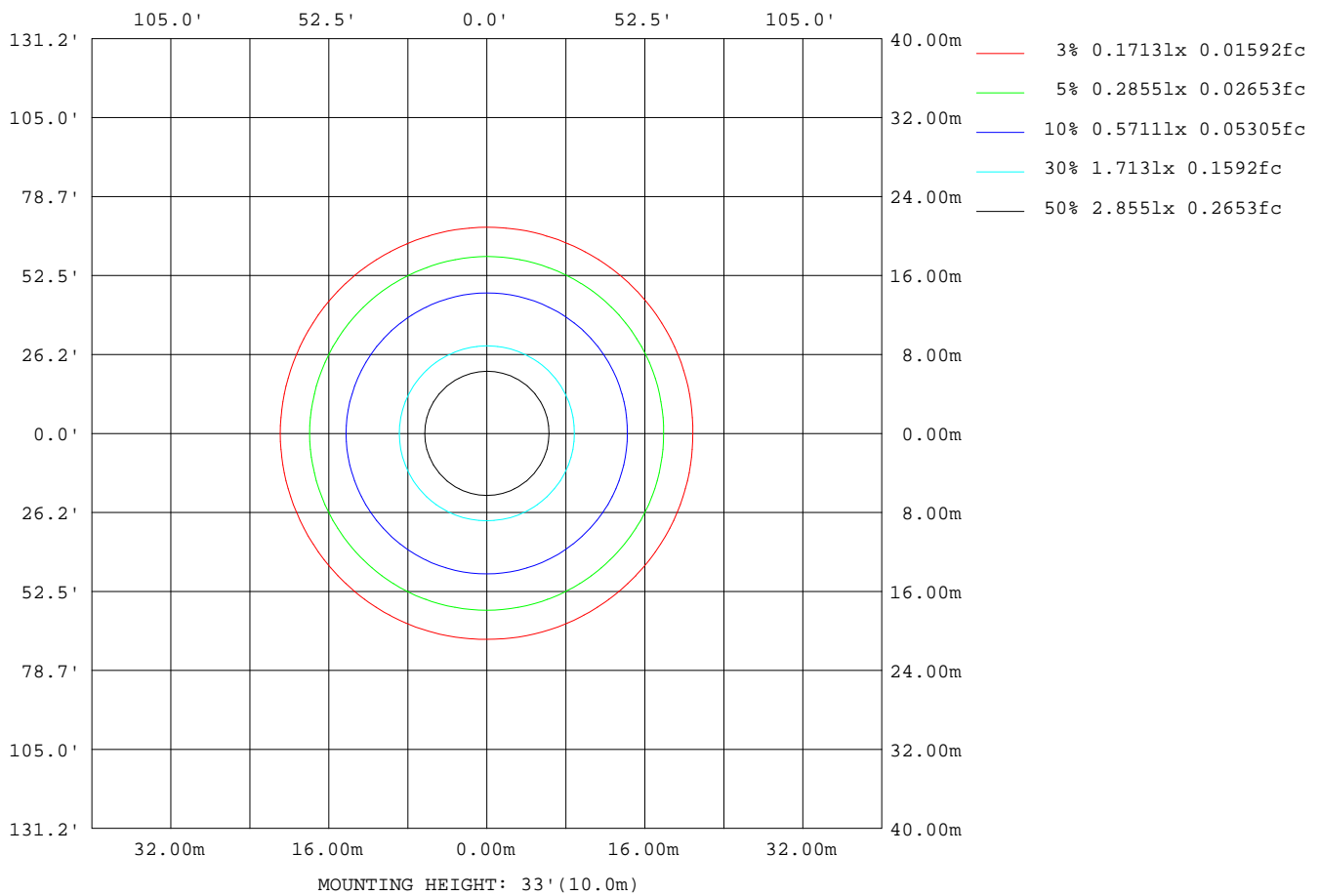
Note: The Curves indicate the illuminated area and the average illumination when the luminaire is at different distance.

C Range: 0 - 360DEG
 C Interval: 22.5DEG
 Test Speed: HIGH
 Temperature: 25.0DEG
 Operators: Water
 Test Date: 2024-05-03

γ Range: 0 - 180DEG
 γ Interval: 1.0DEG
 Test System: EVERFINE GO-R5000_V2 SYSTEM V2.00.446
 Humidity: 39%
 Test Distance: 2.519m [K=1.0000]
 Remarks:

ISOLUX DIAGRAM

Test:U:120.07V I:0.1682A P:18.880W PF:0.9348 Freq:60.00Hz Lamp Flux:1644.78x1 lm		
NAME: LED Luminaire	TYPE: N/A	WEIGHT: N/A
SPEC.: :ASD-MPR-9D18WH 5000K	DIM.: N/A	SERIAL No.: N/A
MFR.:ASD Lighting Corp	SUR.: N/A	Shielding Angle: N/A



C Range: 0 - 360DEG
 C Interval: 22.5DEG
 Test Speed: HIGH
 Temperature:25.0DEG
 Operators:Water
 Test Date:2024-05-03

γ Range: 0 - 180DEG
 γ Interval: 1.0DEG
 Test System:EVERFINE GO-R5000_V2 SYSTEM V2.00.446
 Humidity:39%
 Test Distance:2.519m [K=1.0000]
 Remarks:

LED Avg.L Report

Test:U:120.07V I:0.1682A P:18.880W PF:0.9348 Freq:60.00Hz Lamp Flux:1644.78x1 lm		
NAME: LED Luminaire	TYPE: N/A	WEIGHT: N/A
SPEC.: :ASD-MPR-9D18WH 5000K	DIM.: N/A	SERIAL No.: N/A
MFR.: ASD Lighting Corp	SUR.: N/A	Shielding Angle: N/A

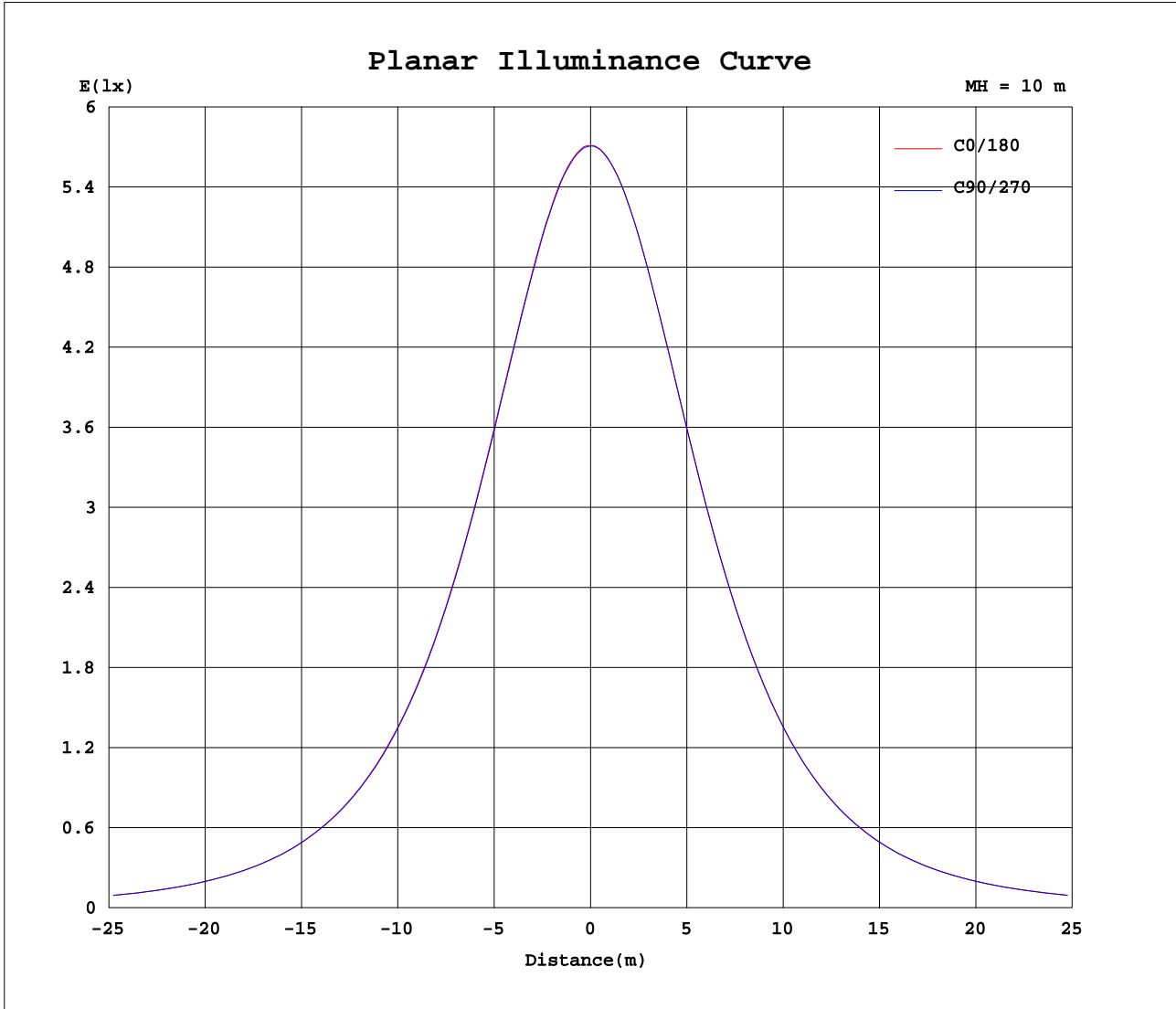
AvgL	cd/m2
L_0~180(65)av	14164
L_0~180(75)av	12545
L_0~180(85)av	8608
L_90~270(65)av	14128
L_90~270(75)av	12510
L_90~270(85)av	8463
L_45(65)av	14139
L_45(75)av	12527
L_45(85)av	8550

Standard: GB/T 29293-2012

C Range: 0 - 360DEG
 C Interval: 22.5DEG
 Test Speed: HIGH
 Temperature:25.0DEG
 Operators:Water
 Test Date:2024-05-03

γ Range: 0 - 180DEG
 γ Interval: 1.0DEG
 Test System:EVERFINE GO-R5000_V2 SYSTEM V2.00.446
 Humidity:39%
 Test Distance:2.519m [K=1.0000]
 Remarks:

Planar Illuminance Curve



C Range: 0 - 360DEG
 C Interval: 22.5DEG
 Test Speed: HIGH
 Temperature: 25.0DEG
 Operators: Water
 Test Date: 2024-05-03

γ Range: 0 - 180DEG
 γ Interval: 1.0DEG
 Test System: EVERFINE GO-R5000_V2 SYSTEM V2.00.446
 Humidity: 39%
 Test Distance: 2.519m [K=1.0000]
 Remarks:

LUMINOUS DISTRIBUTION INTENSITY DATA

Test:U:120.07V I:0.1682A P:18.880W PF:0.9348 Freq:60.00Hz Lamp Flux:1644.78x1 lm		
NAME: LED Luminaire	TYPE: N/A	WEIGHT: N/A
SPEC.: :ASD-MPR-9D18WH 5000K	DIM.: N/A	SERIAL No.: N/A
MFR.:ASD Lighting Corp	SUR.: N/A	Shielding Angle: N/A

Table--1

UNIT: cd

C(DEG) γ (DEG)	0	22.5	45	67.5	90	112.5	135	157.5	180	202.5	225	247.5	270	292.5	315	337.5			
0	571	571	571	571	571	571	571	571	571	571	571	571	571	571	571	571			
5	568	569	568	568	568	569	568	568	569	568	568	569	568	569	569	568			
10	561	561	561	560	560	561	560	560	561	561	561	561	561	562	562	562			
15	549	549	548	548	548	548	547	547	548	548	548	548	549	549	550	549			
20	531	531	530	530	530	531	530	529	531	530	530	531	532	532	533	532			
25	510	509	508	508	508	509	508	507	509	508	508	509	510	511	512	511			
30	483	483	481	481	482	482	481	481	483	482	482	483	484	485	486	485			
35	453	453	451	451	451	453	452	452	453	452	452	452	455	456	456	456			
40	420	418	417	417	417	419	418	418	419	418	418	419	421	422	423	422			
45	383	382	380	380	381	382	381	381	383	381	381	381	384	385	386	386			
50	342	342	340	340	341	342	341	341	343	341	341	340	343	344	346	345			
55	299	299	297	298	298	300	299	298	301	298	298	298	300	301	303	302			
60	253	253	252	253	253	254	253	253	255	253	253	252	254	255	257	256			
65	206	207	206	207	206	207	206	206	208	206	206	206	207	208	209	209			
70	159	160	159	160	158	159	158	158	161	159	159	159	160	160	162	162			
75	112	112	112	112	111	111	111	110	113	112	112	112	113	113	114	115			
80	67.1	67.7	67.2	67.4	66.3	66.4	65.4	65.6	68.1	67.4	67.8	67.5	68.3	68.4	69.5	69.6			
85	25.1	26.0	25.0	25.5	24.1	24.8	23.7	24.4	26.8	25.7	26.5	25.8	27.0	26.6	28.0	27.5			
90	0.19	0.14	0.14	0.13	0.20	0.12	0.20	0.12	0.12	0.13	0.13	0.14	0.12	0.09	0.13	0.12			
95	0.14	0.13	0.14	0.13	0.14	0.13	0.14	0.13	0.04	0.05	0.05	0.05	0.07	0.08	0.06	0.05			
100	0.16	0.16	0.16	0.16	0.16	0.16	0.16	0.16	0.06	0.06	0.06	0.06	0.06	0.07	0.07	0.06			
105	0.19	0.18	0.18	0.18	0.19	0.18	0.19	0.18	0.08	0.08	0.08	0.09	0.09	0.09	0.09	0.09			
110	0.21	0.21	0.21	0.21	0.21	0.21	0.21	0.21	0.11	0.11	0.11	0.12	0.12	0.12	0.11	0.12			
115	0.25	0.25	0.24	0.24	0.25	0.24	0.25	0.25	0.14	0.15	0.15	0.15	0.15	0.15	0.15	0.15			
120	0.30	0.29	0.29	0.29	0.29	0.29	0.30	0.29	0.18	0.18	0.18	0.18	0.18	0.18	0.18	0.18			
125	0.36	0.36	0.36	0.35	0.36	0.35	0.36	0.36	0.22	0.22	0.22	0.22	0.22	0.22	0.22	0.22			
130	0.45	0.45	0.45	0.44	0.45	0.44	0.45	0.44	0.25	0.25	0.25	0.25	0.25	0.26	0.25	0.26			
135	0.57	0.56	0.57	0.56	0.56	0.56	0.56	0.56	0.28	0.28	0.28	0.28	0.28	0.29	0.28	0.29			
140	0.74	0.73	0.74	0.72	0.73	0.73	0.73	0.73	0.31	0.31	0.31	0.31	0.31	0.31	0.31	0.31			
145	0.90	0.90	0.90	0.89	0.90	0.90	0.90	0.90	0.34	0.34	0.34	0.34	0.34	0.34	0.34	0.34			
150	1.05	1.05	1.05	1.04	1.04	1.04	1.05	1.04	0.37	0.37	0.37	0.38	0.38	0.38	0.38	0.38			
155	1.18	1.18	1.19	1.18	1.18	1.18	1.18	1.18	0.43	0.43	0.43	0.43	0.43	0.43	0.43	0.43			
160	1.25	1.26	1.26	1.25	1.25	1.25	1.25	1.25	0.50	0.50	0.50	0.50	0.50	0.50	0.50	0.50			
165	1.22	1.23	1.23	1.23	1.23	1.23	1.21	1.23	0.58	0.57	0.56	0.57	0.58	0.58	0.57	0.57			
170	1.14	1.16	1.16	1.16	1.16	1.16	1.14	1.16	0.66	0.66	0.64	0.66	0.66	0.65	0.66	0.66			
175	1.07	1.09	1.09	1.09	1.08	1.09	1.08	1.07	0.78	0.78	0.77	0.79	0.78	0.80	0.79	0.77			
180	0.93	0.93	0.93	0.93	0.93	0.93	0.93	0.93	0.94	0.94	0.94	0.93	0.93	0.93	0.93	0.93			

C Range: 0 - 360DEG
 C Interval: 22.5DEG
 Test Speed: HIGH
 Temperature:25.0DEG
 Operators:Water
 Test Date:2024-05-03

γ Range: 0 - 180DEG
 γ Interval: 1.0DEG
 Test System:EVERFINE GO-R5000_V2 SYSTEM V2.00.446
 Humidity:39%
 Test Distance:2.519m [K=1.0000]
 Remarks: