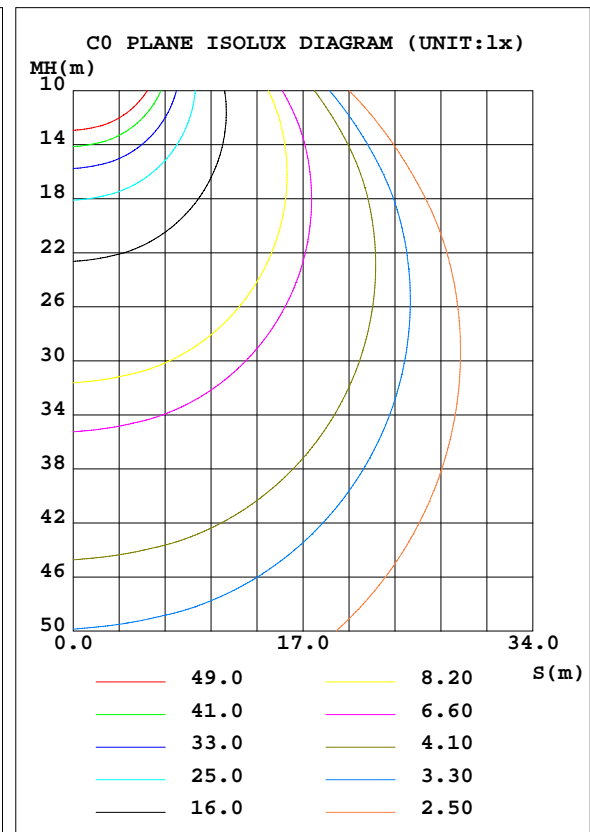
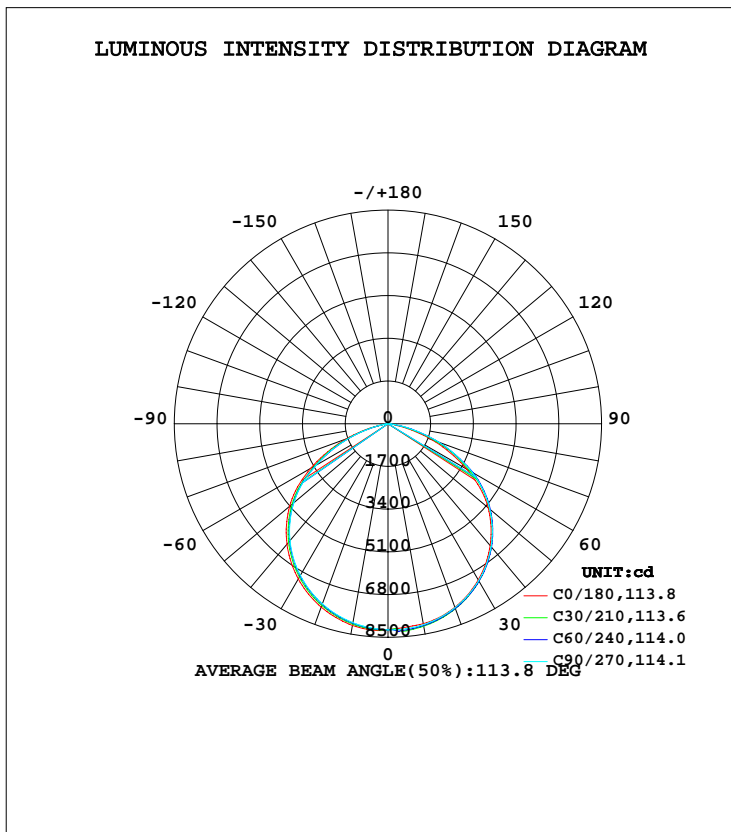


LUMINAIRE PHOTOMETRIC TEST REPORT

Test:U:120.01V I:1.2639A P:151.46W PF:0.9986 Freq:60.01Hz Lamp Flux:22829.4x1 lm		
NAME: ASD Lighting Corp	TYPE: LED	WEIGHT:
SPEC.: ASD-UHB2-150D50-PRM	DIM.:	SERIAL No.:
MFR.: ASD Lighting Corp	SUR.:	Shielding Angle:

DATA OF LAMP		PHOTOMETRIC DATA Eff: 150.73 lm/W			
MODEL	ASD-UHB2-150D50-PRM	Imax(cd)	8285	S/MH(C0/180)	1.29
NOMINAL POWER(W)	150	LOR(%)	100.0	S/MH(C90/270)	1.26
RATED VOLTAGE(V)	120-277	TOTAL FLUX(lm)	22829	η UP, DN(C0-180)	0.0,51.5
NOMINAL FLUX(lm)	22829.4	CIE CLASS	DIRECT	η UP, DN(C180-360)	0.1,48.4
LAMPS INSIDE	1	η up(%)	0.1	CIBSE SHR NOM	1.25
TEST VOLTAGE(V)	120	η down(%)	99.9	CIBSE SHR MAX	1.35



C Range: 0 - 360DEG
 C Interval: 15.0DEG
 Test Speed: HIGH
 Temperature: 25.1DEG
 Operators: Alan Wang
 Test Date: 27 January 2021

γ Range: 0 - 180DEG
 γ Interval: 1.0DEG
 Test System: EVERFINE GO-R5000_V2 SYSTEM V2.00.442T2
 Humidity: 46.2%
 Test Distance: 2.500m [K=1.0459]
 Remarks:

ZONAL FLUX DIAGRAM

ZONAL FLUX DIAGRAM:

γ	C0	C45	C90	C135	C180	C225	C270	C315	γ	Φ zone	Φ total	%lum, lamp
10	8081	8168	8116	8054	8148	8077	8039	8034	0- 10	778.1	778.1	3.41,3.41
20	7778	7832	7790	7708	7766	7670	7630	7646	10- 20	2241	3020	13.2,13.2
30	7181	7241	7214	7114	7136	7016	6972	7013	20- 30	3432	6451	28.3,28.3
40	6326	6408	6387	6274	6254	6112	6070	6132	30- 40	4192	10643	46.6,46.6
50	5204	5305	5292	5166	5106	4941	4893	4986	40- 50	4397	15041	65.9,65.9
60	3629	3859	3889	3707	3548	3337	3307	3410	50- 60	3918	18959	83,83
70	1845	2099	2155	1972	1773	1603	1595	1693	60- 70	2680	21639	94.8,94.8
80	289.4	476.7	526.9	407.0	255.4	214.6	231.2	258.0	70- 80	1075	22714	99.5,99.5
90	0.6294	6.738	10.30	2.553	1.235	1.357	1.378	1.276	80- 90	93.55	22808	99.9,99.9
100	1.014	1.016	0.9979	1.036	2.205	2.379	2.358	2.268	90-100	1.615	22809	99.9,99.9
110	1.549	1.472	1.523	1.566	2.800	2.910	2.933	2.825	100-110	2.052	22811	99.9,99.9
120	2.462	2.249	2.270	2.379	3.559	3.627	3.650	3.429	110-120	2.498	22814	99.9,99.9
130	3.577	3.285	3.246	3.410	4.926	5.199	5.320	4.748	120-130	3.160	22817	99.9,99.9
140	4.504	4.301	4.381	4.356	6.017	6.434	6.230	6.015	130-140	3.699	22821	100,100
150	4.801	4.685	4.683	4.778	6.853	7.061	6.819	6.777	140-150	3.474	22824	100,100
160	5.726	5.214	4.853	5.407	7.548	7.597	7.125	7.146	150-160	2.793	22827	100,100
170	6.501	6.222	5.993	6.277	7.685	7.811	7.408	7.255	160-170	1.869	22829	100,100
180	7.516	7.516	7.516	7.516	7.002	7.002	7.002	7.002	170-180	0.6660	22829	100,100
DEG	LUMINOUS INTENSITY:cd									UNIT:lm		

Conical surface Flux(90deg): 12855 lm

%lum = 56.3%
 %lamp = 56.3%

Conical surface Flux(120deg): 18959 lm

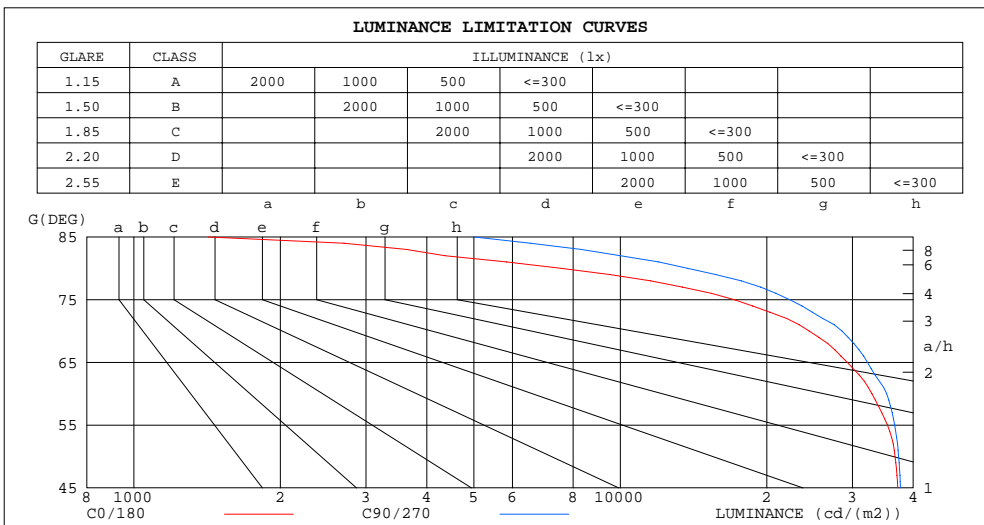
%lum = 83.0%
 %lamp = 83.0%

C Range: 0 - 360DEG
 C Interval: 15.0DEG
 Test Speed: HIGH
 Temperature: 25.1DEG
 Operators: Alan Wang
 Test Date: 27 January 2021

γ Range: 0 - 180DEG
 γ Interval: 1.0DEG
 Test System: EVERFINE GO-R5000_V2 SYSTEM V2.00.442T2
 Humidity: 46.2%
 Test Distance: 2.500m [K=1.0459]
 Remarks:

LUMINANCE LIMITATION CURVES

Test:U:120.01V I:1.2639A P:151.46W PF:0.9986 Freq:60.01Hz Lamp Flux:22829.4x1 lm		
NAME: ASD Lighting Corp	TYPE: LED	WEIGHT:
SPEC.: ASD-UHB2-150D50-PRM	DIM.:	SERIAL No.:
MFR.: ASD Lighting Corp	SUR.:	Shielding Angle:



LUMINANCE cd/(m2)		
G (DEG)	C0/180	C90/270
85	1423	5012
80	7559	13760
75	17149	22287
70	24457	28572
65	29282	32213
60	32918	35274
55	35410	36647
50	36714	37335
45	37192	37656

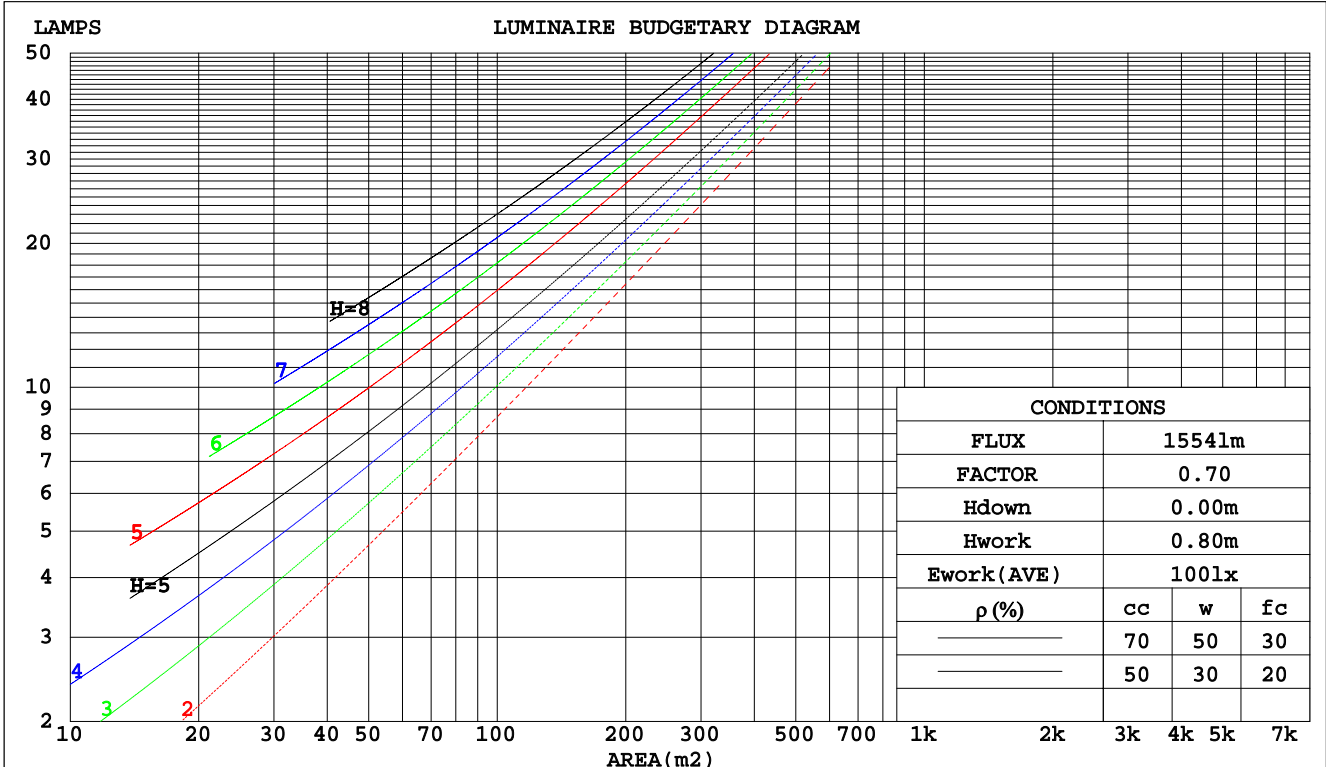
C Range: 0 - 360DEG
 C Interval: 15.0DEG
 Test Speed: HIGH
 Temperature: 25.1DEG
 Operators: Alan Wang
 Test Date: 27 January 2021

γ Range: 0 - 180DEG
 γ Interval: 1.0DEG
 Test System: EVERFINE GO-R5000_V2 SYSTEM V2.00.442T2
 Humidity: 46.2%
 Test Distance: 2.500m [K=1.0459]
 Remarks:

CU AND LUMINAIRE BUDGETARY ESTIMATE DIAGRAM

Test:U:120.01V I:1.2639A P:151.46W PF:0.9986 Freq:60.01Hz Lamp Flux:22829.4x1 lm		
NAME: ASD Lighting Corp	TYPE: LED	WEIGHT:
SPEC.: ASD-UHB2-150D50-PRM	DIM.:	SERIAL No.:
MFR.: ASD Lighting Corp	SUR.:	Shielding Angle:

pcc	80%			70%			50%			30%			10%			0
	50%	30%	10%	50%	30%	10%	50%	30%	10%	50%	30%	10%	50%	30%	10%	0
pw																0
pfc	20%			20%			20%			20%			20%			0
RCR	RCR:Room Cavity Ratio Coefficients of Utilization(CU)															
0.0	1.19	1.19	1.19	1.16	1.16	1.16	1.11	1.11	1.11	1.06	1.06	1.06	1.02	1.02	1.02	.00
1.0	1.05	1.01	.98	1.03	.99	.96	.99	.96	.93	.95	.93	.90	.91	.89	.88	.86
2.0	.92	.86	.80	.90	.84	.79	.87	.82	.78	.84	.79	.76	.81	.77	.74	.72
3.0	.81	.73	.67	.80	.72	.66	.77	.70	.65	.74	.69	.64	.71	.67	.63	.61
4.0	.72	.63	.57	.71	.63	.57	.68	.61	.56	.66	.60	.55	.64	.59	.54	.52
5.0	.64	.56	.49	.63	.55	.49	.61	.54	.48	.59	.53	.48	.57	.52	.47	.45
6.0	.58	.49	.43	.57	.49	.43	.55	.48	.42	.53	.47	.42	.52	.46	.41	.39
7.0	.52	.44	.38	.52	.43	.38	.50	.43	.37	.49	.42	.37	.47	.41	.37	.35
8.0	.48	.39	.34	.47	.39	.33	.46	.38	.33	.45	.38	.33	.43	.37	.33	.31
9.0	.44	.36	.30	.43	.35	.30	.42	.35	.30	.41	.34	.30	.40	.34	.30	.28
10.0	.40	.33	.27	.40	.32	.27	.39	.32	.27	.38	.32	.27	.37	.31	.27	.25



C Range: 0 - 360DEG
 C Interval: 15.0DEG
 Test Speed: HIGH
 Temperature: 25.1DEG
 Operators: Alan Wang
 Test Date: 27 January 2021

γ Range: 0 - 180DEG
 γ Interval: 1.0DEG
 Test System: EVERFINE GO-R5000_V2 SYSTEM V2.00.442T2
 Humidity: 46.2%
 Test Distance: 2.500m [K=1.0459]
 Remarks:

WEC AND CCEC

Test:U:120.01V I:1.2639A P:151.46W PF:0.9986 Freq:60.01Hz Lamp Flux:22829.4x1 lm		
NAME: ASD Lighting Corp	TYPE: LED	WEIGHT:
SPEC.: ASD-UHB2-150D50-PRM	DIM.:	SERIAL No.:
MFR.: ASD Lighting Corp	SUR.:	Shielding Angle:

ρcc	80%			70%			50%			30%			10%			0
ρw	50%	30%	10%	50%	30%	10%	50%	30%	10%	50%	30%	10%	50%	30%	10%	0
ρfc	20%			20%			20%			20%			20%			0
RCR	RCR:Room Cavity Ratio						Wall Exitance Coefficients(WEC)									
0.0																
1.0	.283	.161	.051	.276	.157	.050	.262	.151	.048	.250	.144	.046	.239	.139	.045	
2.0	.274	.150	.046	.268	.148	.045	.256	.143	.044	.246	.138	.043	.236	.133	.042	
3.0	.258	.137	.041	.253	.135	.041	.242	.131	.040	.233	.128	.039	.224	.124	.038	
4.0	.241	.125	.037	.236	.123	.036	.227	.120	.036	.218	.117	.035	.210	.114	.035	
5.0	.224	.114	.033	.220	.113	.033	.212	.110	.032	.204	.108	.032	.197	.105	.032	
6.0	.209	.105	.030	.205	.104	.030	.198	.101	.030	.191	.099	.029	.185	.097	.029	
7.0	.195	.097	.027	.192	.096	.027	.185	.094	.027	.179	.092	.027	.174	.090	.027	
8.0	.183	.089	.025	.180	.089	.025	.174	.087	.025	.169	.085	.025	.164	.084	.024	
9.0	.172	.083	.023	.169	.082	.023	.164	.081	.023	.159	.080	.023	.154	.078	.023	
10.0	.162	.078	.022	.159	.077	.021	.155	.076	.021	.150	.075	.021	.146	.073	.021	

ρcc	80%			70%			50%			30%			10%			0
ρw	50%	30%	10%	50%	30%	10%	50%	30%	10%	50%	30%	10%	50%	30%	10%	0
ρfc	20%			20%			20%			20%			20%			0
RCR	RCR:Room Cavity Ratio						Ceiling Cavity Exitance Coefficients(CCEC)									
0.0	.191	.191	.191	.163	.163	.163	.112	.112	.112	.064	.064	.064	.020	.020	.020	
1.0	.179	.157	.137	.153	.135	.118	.105	.093	.082	.060	.054	.048	.019	.017	.015	
2.0	.171	.133	.101	.146	.114	.087	.100	.079	.061	.058	.046	.036	.019	.015	.012	
3.0	.163	.115	.077	.140	.099	.067	.096	.069	.047	.055	.040	.028	.018	.013	.009	
4.0	.156	.102	.060	.133	.088	.052	.092	.061	.037	.053	.036	.022	.017	.012	.007	
5.0	.148	.091	.049	.127	.079	.042	.088	.055	.030	.051	.032	.018	.016	.011	.006	
6.0	.141	.083	.041	.122	.072	.035	.084	.050	.025	.049	.029	.015	.016	.010	.005	
7.0	.135	.076	.034	.116	.066	.030	.080	.046	.021	.047	.027	.013	.015	.009	.004	
8.0	.129	.070	.030	.111	.061	.026	.077	.043	.018	.045	.025	.011	.014	.008	.004	
9.0	.123	.065	.026	.106	.056	.023	.073	.040	.016	.043	.023	.010	.014	.008	.003	
10.0	.117	.061	.023	.101	.053	.020	.070	.037	.014	.041	.022	.009	.013	.007	.003	

C Range: 0 - 360DEG
 C Interval: 15.0DEG
 Test Speed: HIGH
 Temperature: 25.1DEG
 Operators: Alan Wang
 Test Date: 27 January 2021

γ Range: 0 - 180DEG
 γ Interval: 1.0DEG
 Test System: EVERFINE GO-R5000_V2 SYSTEM V2.00.442T2
 Humidity: 46.2%
 Test Distance: 2.500m [K=1.0459]
 Remarks:

UGR(Unified Glare Rating) Table

Test:U:120.01V I:1.2639A P:151.46W PF:0.9986 Freq:60.01Hz Lamp Flux:22829.4x1 lm										
NAME: ASD Lighting Corp					TYPE: LED			WEIGHT:		
SPEC.: ASD-UHB2-150D50-PRM					DIM.:			SERIAL No.:		
MFR.: ASD Lighting Corp					SUR.:			Shielding Angle:		
ceiling/cavity	0.7	0.7	0.5	0.5	0.3	0.7	0.7	0.5	0.5	0.3
walls	0.5	0.3	0.5	0.3	0.3	0.5	0.3	0.5	0.3	0.3
working plane	0.2	0.2	0.2	0.2	0.2	0.2	0.2	0.2	0.2	0.2
Room dimensions	Viewed crosswise					Viewed endwise				
x = 2H y = 2H	24.9	26.5	25.3	26.8	27.1	25.0	26.6	25.4	26.9	27.3
3H	26.3	27.7	26.6	28.0	28.4	26.6	28.0	26.9	28.3	28.7
4H	26.6	27.9	27.0	28.3	28.7	27.0	28.3	27.4	28.7	29.1
6H	26.7	27.9	27.1	28.3	28.7	27.2	28.4	27.6	28.8	29.2
8H	26.6	27.8	27.1	28.2	28.6	27.2	28.4	27.6	28.8	29.2
12H	26.6	27.7	27.0	28.1	28.6	27.2	28.3	27.6	28.7	29.1
4H 2H	25.5	26.8	25.9	27.2	27.6	25.5	26.9	25.9	27.2	27.6
3H	27.0	28.2	27.5	28.6	29.0	27.2	28.4	27.7	28.8	29.2
4H	27.4	28.4	27.9	28.9	29.3	27.8	28.8	28.2	29.2	29.6
6H	27.6	28.4	28.0	28.9	29.3	28.0	28.9	28.5	29.3	29.8
8H	27.5	28.4	28.0	28.8	29.3	28.0	28.8	28.5	29.3	29.8
12H	27.5	28.2	28.0	28.7	29.2	28.0	28.7	28.5	29.2	29.7
8H 4H	27.6	28.4	28.1	28.9	29.4	27.9	28.7	28.3	29.1	29.6
6H	27.8	28.4	28.3	28.9	29.4	28.2	28.8	28.7	29.3	29.8
8H	27.8	28.4	28.3	28.9	29.4	28.2	28.8	28.7	29.3	29.8
12H	27.7	28.3	28.2	28.8	29.3	28.2	28.7	28.7	29.2	29.8
12H 4H	27.6	28.3	28.1	28.8	29.3	27.9	28.6	28.3	29.1	29.5
6H	27.8	28.4	28.3	28.8	29.4	28.1	28.7	28.7	29.2	29.7
8H	27.8	28.3	28.3	28.8	29.3	28.2	28.7	28.7	29.2	29.8
CIE190: 2010										

CIE190: 2010
Area: 0.220507 m2

C Range: 0 - 360DEG
C Interval: 15.0DEG
Test Speed: HIGH
Temperature: 25.1DEG
Operators: Alan Wang
Test Date: 27 January 2021

γ Range: 0 - 180DEG
γ Interval: 1.0DEG
Test System: EVERFINE GO-R5000_V2 SYSTEM V2.00.442T2
Humidity: 46.2%
Test Distance: 2.500m [K=1.0459]
Remarks:

UTILIZATION FACTORS TABLE

Test:U:120.01V I:1.2639A P:151.46W PF:0.9986 Freq:60.01Hz Lamp Flux:22829.4x1 lm		
NAME: ASD Lighting Corp	TYPE: LED	WEIGHT:
SPEC.: ASD-UHB2-150D50-PRM	DIM.:	SERIAL No.:
MFR.: ASD Lighting Corp	SUR.:	Shielding Angle:

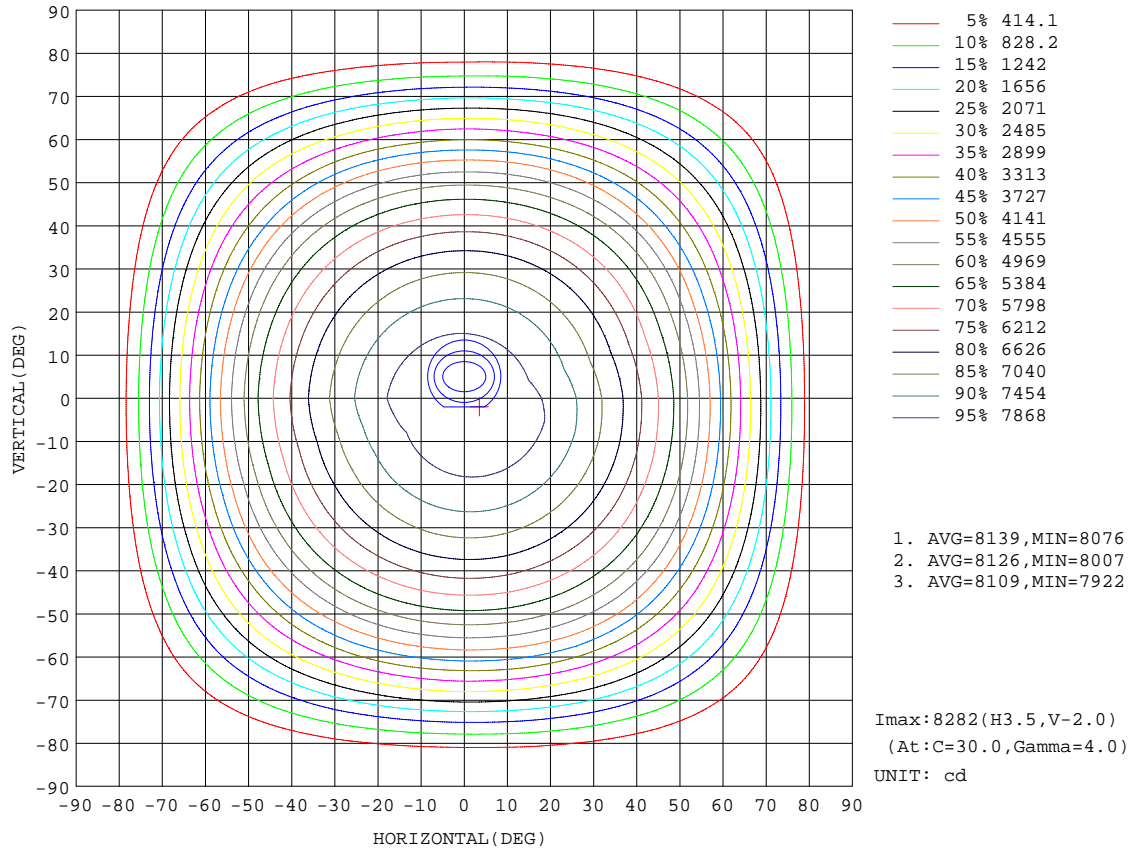
REFLECTANCE										
Ceiling	0.8	0.8	0.8	0.7	0.7	0.7	0.5	0.5	0.5	0
Walls	0.7	0.5	0.3	0.7	0.5	0.3	0.7	0.5	0.3	0
Working plane	0.2	0.2	0.2	0.2	0.2	0.2	0.2	0.2	0.2	0
ROOM INDEX	UTILIZATION FACTORS(PERCENT) $k(RI) \times RCR = 5$									
k = 0.60	58	47	40	58	47	40	56	46	40	33
0.80	69	57	50	68	57	50	66	56	50	43
1.00	77	67	60	76	66	59	74	67	59	52
1.25	85	75	68	83	74	67	81	73	67	60
1.50	90	80	74	88	79	73	85	78	72	65
2.00	97	89	82	95	87	82	91	85	80	73
2.50	100	93	87	98	92	86	95	89	85	77
3.00	104	97	92	101	96	91	97	93	89	81
4.00	107	102	98	105	100	96	101	97	94	85
5.00	110	105	102	107	103	100	103	100	97	88
ROOM INDEX	UF(total)									Direct
According to DIN EN 13032-2 2004			Suspended				SHRNOM = 1.25			

C Range: 0 - 360DEG
 C Interval: 15.0DEG
 Test Speed: HIGH
 Temperature: 25.1DEG
 Operators: Alan Wang
 Test Date: 27 January 2021

γ Range: 0 - 180DEG
 γ Interval: 1.0DEG
 Test System: EVERFINE GO-R5000_V2 SYSTEM V2.00.442T2
 Humidity: 46.2%
 Test Distance: 2.500m [K=1.0459]
 Remarks:

ISOCANDELA DIAGRAM

Test:U:120.01V I:1.2639A P:151.46W PF:0.9986 Freq:60.01Hz Lamp Flux:22829.4x1 lm		
NAME: ASD Lighting Corp	TYPE: LED	WEIGHT:
SPEC.: ASD-UHB2-150D50-PRM	DIM.:	SERIAL No.:
MFR.: ASD Lighting Corp	SUR.:	Shielding Angle:

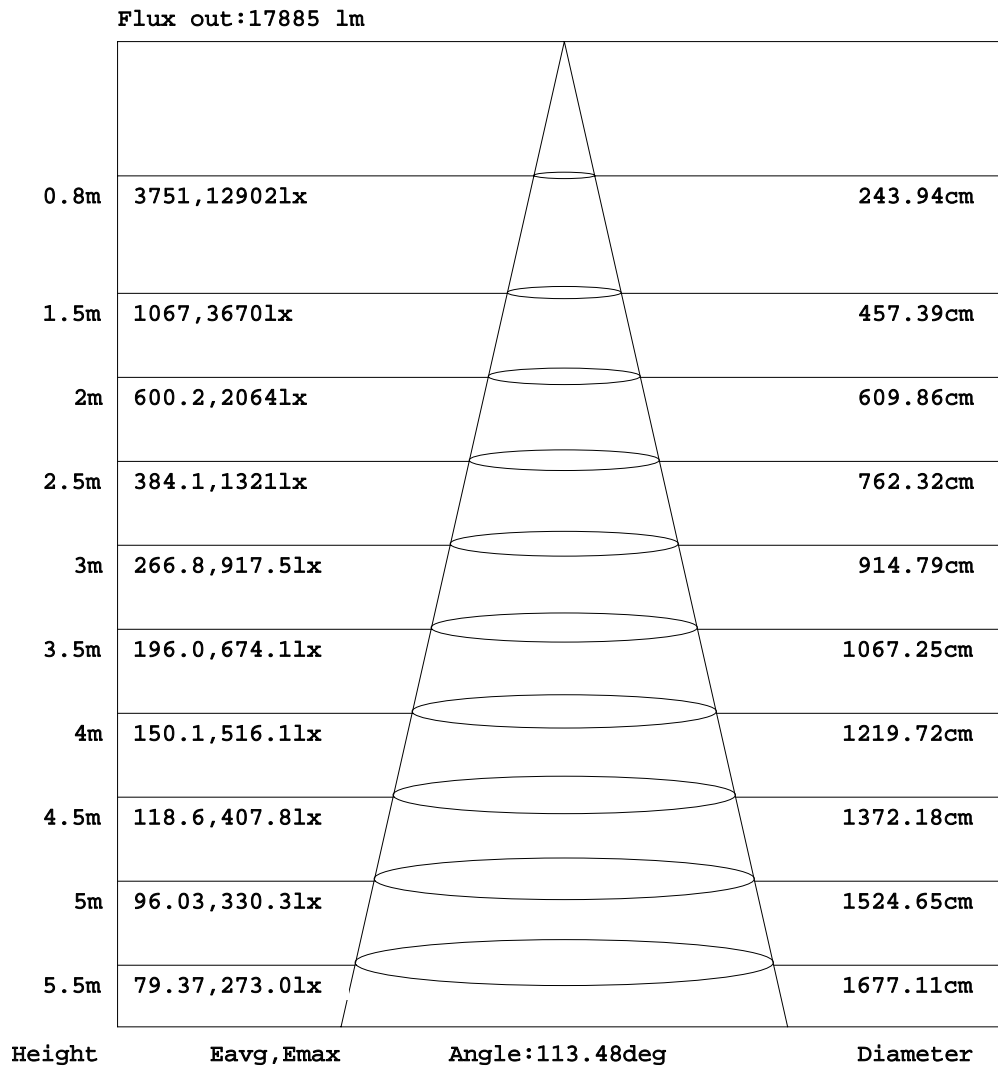


C Range: 0 - 360DEG
 C Interval: 15.0DEG
 Test Speed: HIGH
 Temperature: 25.1DEG
 Operators: Alan Wang
 Test Date: 27 January 2021

γ Range: 0 - 180DEG
 γ Interval: 1.0DEG
 Test System: EVERFINE GO-R5000_V2 SYSTEM V2.00.442T2
 Humidity: 46.2%
 Test Distance: 2.500m [K=1.0459]
 Remarks:

AAI Figure

Test:U:120.01V I:1.2639A P:151.46W PF:0.9986 Freq:60.01Hz Lamp Flux:22829.4x1 lm		
NAME: ASD Lighting Corp	TYPE: LED	WEIGHT:
SPEC.: ASD-UHB2-150D50-PRM	DIM.:	SERIAL No.:
MFR.: ASD Lighting Corp	SUR.:	Shielding Angle:



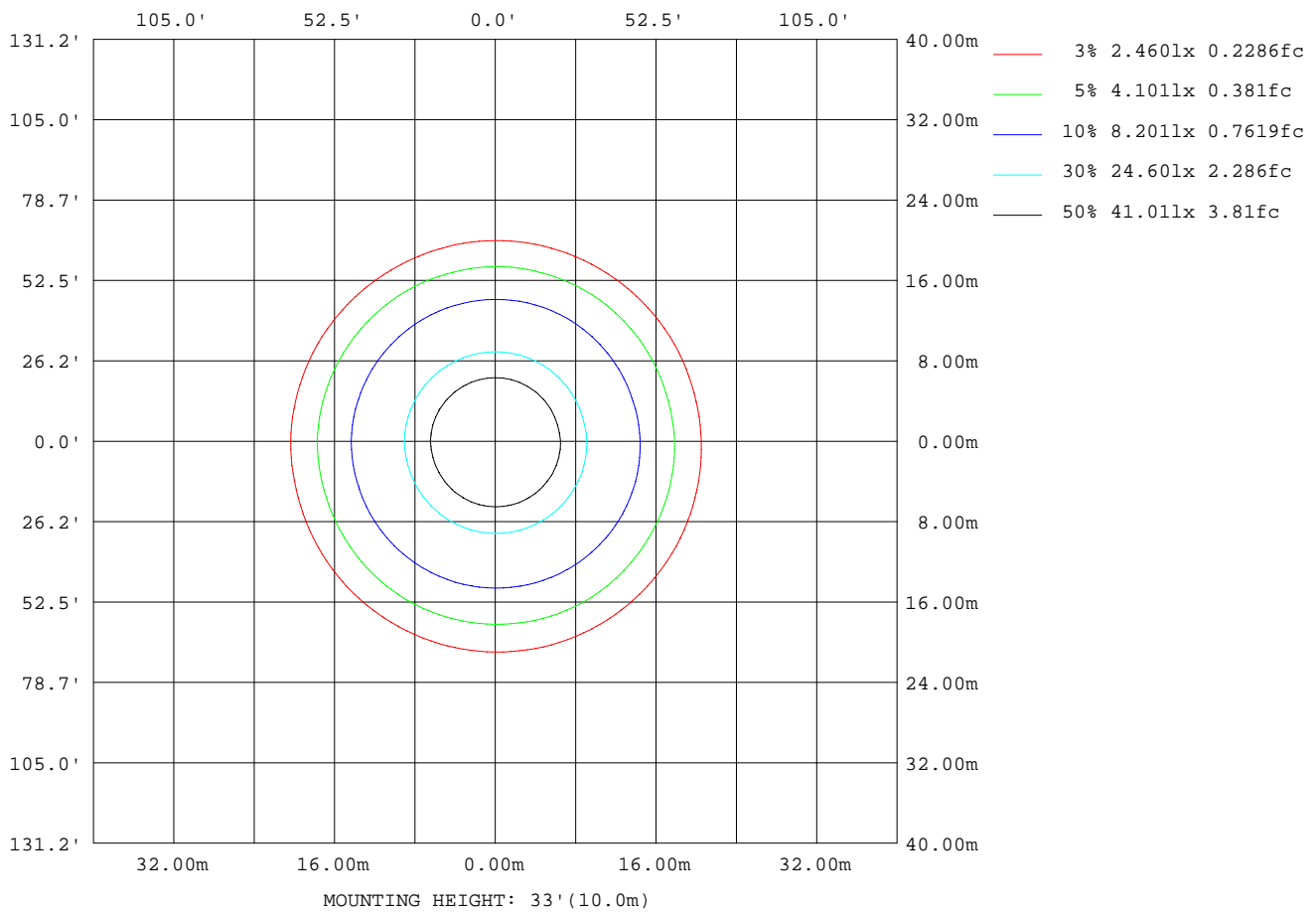
Note:The Curves indicate the illuminated area and the average illumination when the luminaire is at different distance.

C Range: 0 - 360DEG
 C Interval: 15.0DEG
 Test Speed: HIGH
 Temperature: 25.1DEG
 Operators:Alan Wang
 Test Date:27 January 2021

γ Range: 0 - 180DEG
 γ Interval: 1.0DEG
 Test System:EVERFINE GO-R5000_V2 SYSTEM V2.00.442T2
 Humidity: 46.2%
 Test Distance:2.500m [K=1.0459]
 Remarks:

ISOLUX DIAGRAM

Test:U:120.01V I:1.2639A P:151.46W PF:0.9986 Freq:60.01Hz Lamp Flux:22829.4x1 lm		
NAME: ASD Lighting Corp	TYPE: LED	WEIGHT:
SPEC.: ASD-UHB2-150D50-PRM	DIM.:	SERIAL No.:
MFR.: ASD Lighting Corp	SUR.:	Shielding Angle:



C Range: 0 - 360DEG
 C Interval: 15.0DEG
 Test Speed: HIGH
 Temperature: 25.1DEG
 Operators: Alan Wang
 Test Date: 27 January 2021

γ Range: 0 - 180DEG
 γ Interval: 1.0DEG
 Test System: EVERFINE GO-R5000_V2 SYSTEM V2.00.442T2
 Humidity: 46.2%
 Test Distance: 2.500m [K=1.0459]
 Remarks:

LED Avg.L Report

Test:U:120.01V I:1.2639A P:151.46W PF:0.9986 Freq:60.01Hz Lamp Flux:22829.4x1 lm		
NAME: ASD Lighting Corp	TYPE: LED	WEIGHT:
SPEC.: ASD-UHB2-150D50-PRM	DIM.:	SERIAL No.:
MFR.: ASD Lighting Corp	SUR.:	Shielding Angle:

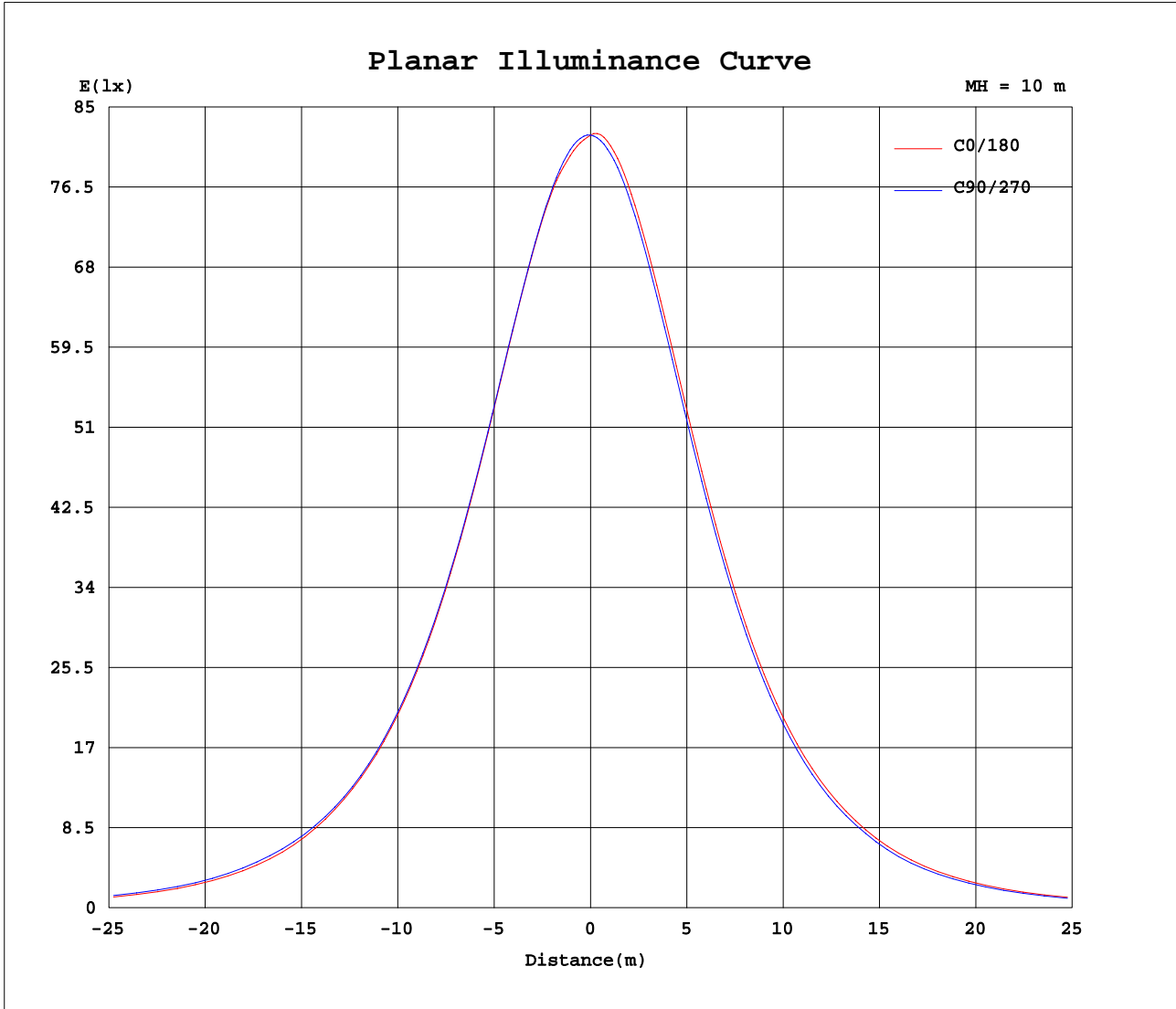
AvgL	cd/m2
L_0~180(65)av	28888
L_0~180(75)av	16537
L_0~180(85)av	1311
L_90~270(65)av	29340
L_90~270(75)av	18042
L_90~270(85)av	3209
L_45(65)av	29168
L_45(75)av	17490
L_45(85)av	2487

Standard: GB/T 29293-2012

C Range: 0 - 360DEG
 C Interval: 15.0DEG
 Test Speed: HIGH
 Temperature: 25.1DEG
 Operators: Alan Wang
 Test Date: 27 January 2021

γ Range: 0 - 180DEG
 γ Interval: 1.0DEG
 Test System: EVERFINE GO-R5000_V2 SYSTEM V2.00.442T2
 Humidity: 46.2%
 Test Distance: 2.500m [K=1.0459]
 Remarks:

Planar Illuminance Curve



C Range: 0 - 360DEG
 C Interval: 15.0DEG
 Test Speed: HIGH
 Temperature: 25.1DEG
 Operators: Alan Wang
 Test Date: 27 January 2021

γ Range: 0 - 180DEG
 γ Interval: 1.0DEG
 Test System: EVERFINE GO-R5000_V2 SYSTEM V2.00.442T2
 Humidity: 46.2%
 Test Distance: 2.500m [K=1.0459]
 Remarks:

LUMINOUS DISTRIBUTION INTENSITY DATA

Test:U:120.01V I:1.2639A P:151.46W PF:0.9986 Freq:60.01Hz Lamp Flux:22829.4x1 lm		
NAME: ASD Lighting Corp	TYPE: LED	WEIGHT:
SPEC.: ASD-UHB2-150D50-PRM	DIM.:	SERIAL No.:
MFR.: ASD Lighting Corp	SUR.:	Shielding Angle:

Table--1

UNIT: cd

C(DEG) γ (DEG)	0	15	30	45	60	75	90	105	120	135	150	165	180	195	210	225	240	255	270
0	8201	8201	8201	8201	8201	8201	8201	8201	8201	8201	8201	8201	8201	8201	8201	8201	8201	8201	8201
5	8128	8198	8272	8256	8235	8213	8190	8167	8147	8130	8204	8253	8229	8209	8193	8179	8167	8156	8147
10	8081	8189	8181	8168	8153	8136	8116	8097	8075	8054	8034	8136	8148	8120	8097	8077	8059	8046	8039
15	7969	8045	8039	8031	8021	8006	7987	7964	7939	7913	7887	7938	7988	7957	7929	7905	7888	7876	7868
20	7778	7837	7835	7832	7823	7810	7790	7767	7738	7708	7678	7702	7766	7730	7698	7670	7650	7636	7630
25	7513	7564	7568	7568	7562	7552	7534	7506	7474	7441	7406	7412	7483	7443	7406	7374	7351	7336	7331
30	7181	7228	7239	7241	7239	7230	7214	7185	7150	7114	7074	7067	7136	7090	7051	7016	6992	6976	6972
35	6789	6832	6848	6856	6856	6851	6832	6803	6766	6726	6681	6661	6726	6676	6634	6597	6571	6555	6553
40	6326	6372	6394	6408	6411	6404	6387	6357	6316	6274	6225	6195	6254	6198	6152	6112	6087	6069	6070
45	5799	5850	5875	5890	5896	5895	5871	5842	5798	5754	5702	5665	5717	5655	5604	5562	5536	5517	5518
50	5204	5257	5286	5305	5318	5317	5292	5260	5219	5166	5111	5066	5106	5040	4986	4941	4912	4894	4893
55	4479	4559	4616	4648	4666	4659	4635	4602	4553	4497	4441	4381	4393	4311	4257	4212	4192	4174	4180
60	3629	3704	3763	3859	3921	3918	3889	3846	3790	3707	3604	3536	3548	3457	3385	3337	3309	3281	3307
65	2729	2824	2918	2975	3004	3015	3002	2954	2891	2837	2769	2677	2655	2604	2557	2498	2446	2450	2467
70	1845	1938	2015	2099	2150	2164	2155	2115	2049	1972	1874	1796	1773	1696	1658	1603	1587	1574	1595
75	979	1052	1142	1221	1270	1282	1272	1236	1191	1119	1030	938	909	850	808	792	791	783	787
80	289	348	410	477	525	547	527	510	470	407	328	268	255	236	224	215	227	230	231
85	27.4	46.8	68.4	77.8	96.3	105	96.3	91.3	88.6	84.8	80.0	75.7	73.0	70.6	68.9	67.7	67.0	66.5	66.5
90	0.63	0.98	4.70	6.74	8.48	9.38	10.3	9.25	8.54	7.85	7.23	6.74	6.36	6.04	5.81	5.63	5.51	5.44	5.42
95	0.79	0.77	0.76	0.76	0.75	0.75	0.75	0.76	0.76	0.77	0.77	0.79	1.70	1.74	1.80	1.85	1.94	1.90	1.87
100	1.01	1.00	0.99	1.02	1.02	1.00	1.00	1.02	1.03	1.04	1.03	1.02	2.20	2.24	2.31	2.38	2.39	2.39	2.36
105	1.25	1.24	1.21	1.23	1.24	1.25	1.25	1.26	1.27	1.28	1.28	1.27	2.63	2.62	2.67	2.71	2.73	2.73	2.72
110	1.55	1.52	1.48	1.47	1.50	1.51	1.52	1.54	1.55	1.57	1.59	1.58	2.80	2.81	2.87	2.91	2.93	2.94	2.93
115	1.95	1.86	1.84	1.79	1.81	1.85	1.87	1.90	1.91	1.94	1.95	1.95	3.06	3.08	3.12	3.17	3.18	3.20	3.21
120	2.46	2.38	2.29	2.25	2.26	2.25	2.27	2.32	2.33	2.38	2.43	2.43	3.56	3.58	3.58	3.63	3.63	3.61	3.65
125	3.04	2.93	2.79	2.76	2.78	2.66	2.73	2.77	2.81	2.88	2.96	2.95	4.11	4.18	4.23	4.32	4.33	4.35	4.42
130	3.58	3.49	3.38	3.29	3.38	3.26	3.25	3.28	3.36	3.41	3.51	3.56	4.93	5.04	5.16	5.20	5.27	5.31	5.32
135	4.13	4.06	3.92	3.76	3.86	3.98	3.92	3.93	3.90	3.90	4.01	4.08	5.55	5.71	5.82	6.00	6.03	6.04	6.09
140	4.50	4.53	4.39	4.30	4.32	4.42	4.38	4.32	4.31	4.36	4.33	4.39	6.02	6.18	6.26	6.43	6.53	6.59	6.63
145	4.62	4.69	4.55	4.48	4.61	4.60	4.57	4.57	4.59	4.58	4.51	4.55	6.42	6.49	6.58	6.74	6.84	6.79	6.74
150	4.80	4.87	4.78	4.69	4.68	4.74	4.68	4.76	4.74	4.78	4.70	4.71	6.85	6.82	6.90	7.06	7.08	6.96	6.82
155	5.28	5.35	5.23	4.93	4.83	4.94	4.83	4.93	4.97	5.07	5.13	5.04	7.09	7.11	7.29	7.32	7.26	7.15	6.93
160	5.73	5.70	5.54	5.21	5.04	5.07	4.85	5.16	5.26	5.41	5.51	5.46	7.55	7.50	7.46	7.60	7.61	7.41	7.12
165	6.09	6.12	6.06	5.86	5.55	5.48	5.33	5.63	5.82	6.00	5.99	5.90	7.62	7.62	7.71	7.82	7.91	7.83	7.48
170	6.50	6.54	6.48	6.22	5.99	5.99	5.99	6.08	6.23	6.28	6.24	6.22	7.68	7.67	7.69	7.81	7.85	7.75	7.41
175	7.23	7.10	6.92	6.53	6.37	6.31	6.23	6.24	6.35	6.52	6.62	6.72	7.77	7.74	7.71	7.77	7.80	7.68	7.39
180	7.52	7.52	7.52	7.52	7.52	7.52	7.52	7.52	7.52	7.52	7.52	7.52	7.00	7.00	7.00	7.00	7.00	7.00	7.00

C Range: 0 - 360DEG
 C Interval: 15.0DEG
 Test Speed: HIGH
 Temperature: 25.1DEG
 Operators: Alan Wang
 Test Date: 27 January 2021

γ Range: 0 - 180DEG
 γ Interval: 1.0DEG
 Test System: EVERFINE GO-R5000_V2 SYSTEM V2.00.442T2
 Humidity: 46.2%
 Test Distance: 2.500m [K=1.0459]
 Remarks:

LUMINOUS DISTRIBUTION INTENSITY DATA

Test:U:120.01V I:1.2639A P:151.46W PF:0.9986 Freq:60.01Hz Lamp Flux:22829.4x1 lm		
NAME: ASD Lighting Corp	TYPE: LED	WEIGHT:
SPEC.: ASD-UHB2-150D50-PRM	DIM.:	SERIAL No.:
MFR.: ASD Lighting Corp	SUR.:	Shielding Angle:

Table--2

UNIT: cd

C(DEG) γ (DEG)	285	300	315	330	345														
0	8201	8201	8201	8201	8201														
5	8142	8137	8134	8132	8130														
10	8034	8032	8034	8037	8040														
15	7864	7865	7870	7877	7886														
20	7630	7637	7646	7658	7673														
25	7336	7346	7358	7377	7397														
30	6980	6993	7013	7036	7060														
35	6564	6579	6605	6632	6661														
40	6085	6104	6132	6164	6199														
45	5534	5560	5595	5632	5671														
50	4912	4945	4986	5031	5078														
55	4210	4238	4254	4290	4345														
60	3320	3361	3410	3445	3501														
65	2493	2520	2562	2622	2663														
70	1618	1660	1693	1731	1776														
75	824	850	861	874	914														
80	247	258	258	257	288														
85	29.3	27.8	25.9	29.2	30.8														
90	1.35	1.32	1.28	1.23	1.20														
95	1.85	1.83	1.76	1.70	1.63														
100	2.34	2.31	2.27	2.22	2.10														
105	2.70	2.67	2.62	2.59	2.48														
110	2.91	2.87	2.83	2.76	2.63														
115	3.18	3.14	3.08	3.00	2.89														
120	3.58	3.51	3.43	3.40	3.32														
125	4.28	4.12	4.04	3.91	3.87														
130	5.15	4.92	4.75	4.82	4.68														
135	5.61	5.44	5.47	5.49	5.29														
140	6.00	6.09	6.01	5.99	5.79														
145	6.47	6.43	6.41	6.32	6.03														
150	6.70	6.66	6.78	6.78	6.29														
155	6.95	6.94	6.93	7.18	6.56														
160	7.05	7.07	7.15	7.37	6.76														
165	7.41	7.26	7.29	7.47	6.78														
170	7.25	7.23	7.25	7.45	6.68														
175	7.18	7.14	7.38	7.34	7.04														
180	7.00	7.00	7.00	7.00	7.00														

C Range: 0 - 360DEG
 C Interval: 15.0DEG
 Test Speed: HIGH
 Temperature: 25.1DEG
 Operators: Alan Wang
 Test Date: 27 January 2021

γ Range: 0 - 180DEG
 γ Interval: 1.0DEG
 Test System: EVERFINE GO-R5000_V2 SYSTEM V2.00.442T2
 Humidity: 46.2%
 Test Distance: 2.500m [K=1.0459]
 Remarks: