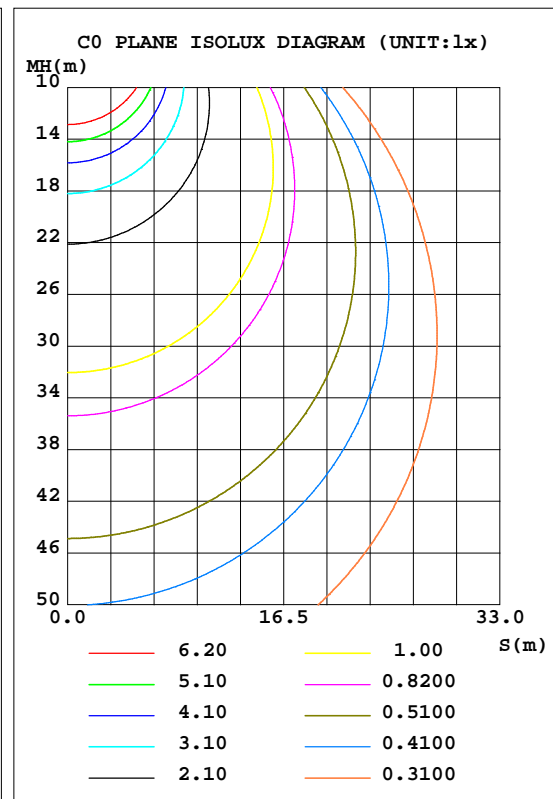
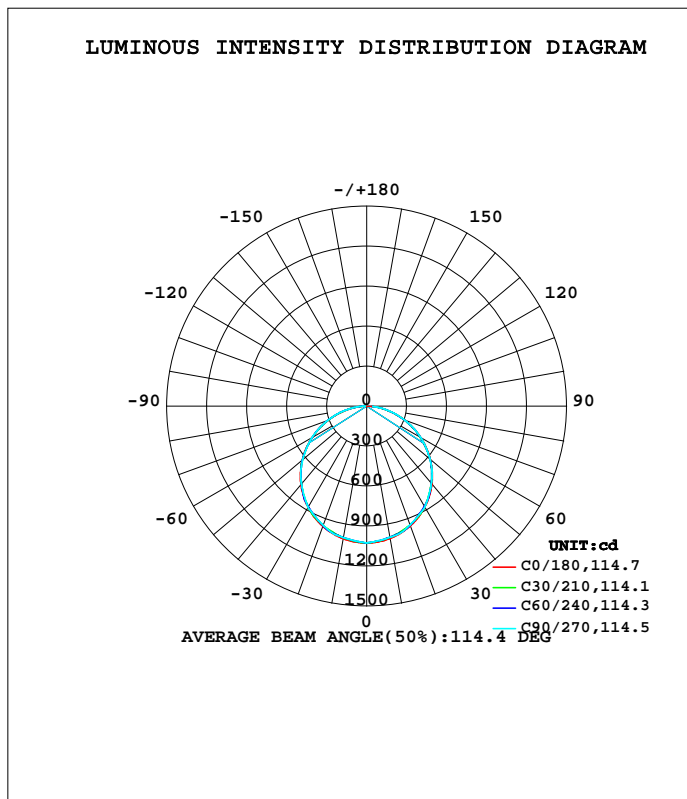


LUMINAIRE PHOTOMETRIC TEST REPORT

Test:U:120V I:0.2250A P:27W PF:0.9905 Lamp Flux:3064.5x1 lm		
NAME: ASD-ELP02-22D2735-STD	TYPE:LED PANEL	WEIGHT:
SPEC.:	DIM.: 603x603mm	SERIAL No.:BLD20170516P23
MFR.: ASD Lighting corp	SUR.:0.55*0.55	Shielding Angle:

DATA OF LAMP		PHOTOMETRIC DATA Eff: 113.5 lm/W			
MODEL	ASD-ELP02-22D2735-STD	I <sub>max</sub> (cd)	1027	S/MH(C0/180)	1.27
NOMINAL POWER(W)	27W	LOR(%)	100.0	S/MH(C90/270)	1.27
RATED VOLTAGE(V)		TOTAL FLUX(lm)	3065	η UP, DN(C0-180)	0.0,49.8
NOMINAL FLUX(lm)	3064.5	CIE CLASS	DIRECT	η UP, DN(C180-360)	0.0,50.2
LAMPS INSIDE	1	η up(%)	0.0	CIBSE SHR NOM	1.25
TEST VOLTAGE(V)		η down(%)	100.0	CIBSE SHR MAX	1.35



C Range: 0 - 360DEG  
 C Interval: 5.0DEG  
 Test Speed: HIGH  
 Temperature:22DEG  
 Operators:NEIKO  
 Test Date:2017-05-16

γ Range: 0 - 180DEG  
 γ Interval: 0.5DEG  
 Test System:EVERFINE GO-2000B\_V1 SYSTEM V2.0.350  
 Humidity:55%  
 Test Distance:12.218m [K=1.0000]  
 Remarks:

ZONAL FLUX DIAGRAM

ZONAL FLUX DIAGRAM:

γ	C0	C45	C90	C135	C180	C225	C270	C315	γ	Φ zone	Φ total	%lum,lamp
5	1022	1015	1014	1016	1023	1017	1015	1016	0- 5	24.40	24.40	0.81,0.81
10	1009	999.6	1001	1001	1011	1002	1002	1001	5- 10	72.21	96.61	3.21,3.21
15	987.7	979.6	985.3	981.3	990.4	982.8	987.5	981.3	10- 15	117.8	214.4	7.12,7.12
20	957.8	954.9	950.1	957.1	961.4	958.9	953.0	957.2	15- 20	159.7	374.1	12.4,12.4
25	920.0	913.8	912.4	916.3	924.3	918.8	916.0	916.5	20- 25	196.0	570.1	18.9,18.9
30	874.6	865.6	874.7	868.9	879.6	871.7	879.1	868.9	25- 30	226.2	796.2	26.4,26.4
35	821.9	815.1	815.4	819.2	827.7	822.2	820.4	818.9	30- 35	249.2	1045	34.7,34.7
40	762.5	759.9	756.1	764.8	768.9	768.3	761.7	764.2	35- 40	263.5	1309	43.5,43.5
45	696.5	689.6	695.1	694.4	703.4	698.1	701.3	694.4	40- 45	269.5	1578	52.4,52.4
50	624.6	618.3	620.6	623.4	632.3	627.5	627.2	623.6	45- 50	266.9	1845	61.3,61.3
55	547.8	546.2	544.4	550.7	556.2	555.0	551.4	551.5	50- 55	255.0	2100	69.7,69.7
60	466.7	462.5	468.2	467.9	474.2	472.4	475.5	468.0	55- 60	235.0	2335	77.5,77.5
65	382.8	380.1	384.2	385.5	389.8	390.4	391.8	385.5	60- 65	207.8	2543	84.4,84.4
70	296.8	297.2	300.4	302.0	303.0	307.2	308.1	302.5	65- 70	174.0	2717	90.2,90.2
75	211.9	213.3	217.2	216.8	216.8	222.3	224.7	218.6	70- 75	135.5	2853	94.7,94.7
80	130.6	131.3	135.7	133.6	134.7	139.5	143.0	136.7	75- 80	94.09	2947	97.8,97.8
85	46.83	55.92	56.81	57.30	42.34	62.09	63.54	59.82	80- 85	51.82	2999	99.6,99.6
90	0.7112	2.606	5.407	2.995	1.188	4.511	8.382	3.520	85- 90	12.92	3011	100,100
95	0	0	0	0	0	0	0	0	90- 95	0.4604	3012	100,100
100	0	0	0	0	0	0	0	0	95-100	0	3012	100,100
105	0	0	0	0	0	0	0	0	100-105	0	3012	100,100
110	0	0	0	0	0	0	0	0	105-110	0	3012	100,100
115	0	0	0	0	0	0	0	0	110-115	0	3012	100,100
120	0	0	0	0	0	0	0	0	115-120	0	3012	100,100
125	0	0	0	0	0	0	0	0	120-125	0	3012	100,100
130	0	0	0	0	0	0	0	0	125-130	0	3012	100,100
135	0	0	0	0	0	0	0	0	130-135	0	3012	100,100
140	0	0	0	0	0	0	0	0	135-140	0	3012	100,100
145	0	0	0	0	0	0	0	0	140-145	0	3012	100,100
150	0	0	0	0	0	0	0	0	145-150	0	3012	100,100
155	0	0	0	0	0	0	0	0	150-155	0	3012	100,100
160	0	0	0	0	0	0	0	0	155-160	0	3012	100,100
165	0	0	0	0	0	0	0	0	160-165	0	3012	100,100
170	0	0	0	0	0	0	0	0	165-170	0	3012	100,100
175	0	0	0	0	0	0	0	0	170-175	0	3012	100,100
180	0	0	0	0	0	0	0	0	175-180	0	3012	100,100
DEG	LUMINOUS INTENSITY:cd									UNIT:lm		

Conical surface Flux(90deg): 1578.5 lm

%lum = 52.4%  
%lamp = 52.4%

Conical surface Flux(120deg): 2335.4 lm

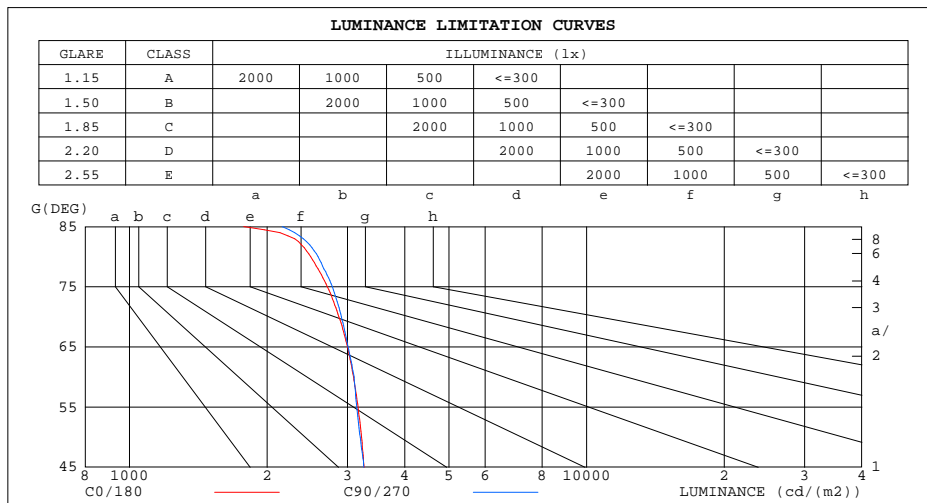
%lum = 77.5%  
%lamp = 77.5%

C Range: 0 - 360DEG  
C Interval: 5.0DEG  
Test Speed: HIGH  
Temperature:22DEG  
Operators:NEIKO  
Test Date:2017-05-16

γ Range: 0 - 180DEG  
γ Interval: 0.5DEG  
Test System:EVERFINE GO-2000B\_V1 SYSTEM V2.0.350  
Humidity:55%  
Test Distance:12.218m [K=1.0000]  
Remarks:

LUMINANCE LIMITATION CURVES

Test:U:120V I:0.2250A P:27W PF:0.9905 Lamp Flux:3064.5x1 lm		
NAME: ASD-ELP02-22D2735-STD	TYPE:LED PANEL	WEIGHT:
SPEC.:	DIM.: 603x603mm	SERIAL No.:BLD20170516P23
MFR.: ASD Lighting corp	SUR.:0.55*0.55	Shielding Angle:



LUMINANCE cd/(m2)		
G(DEG)	C0/180	C90/270
85	1779	2158
80	2490	2587
75	2710	2778
70	2874	2908
65	2999	3010
60	3091	3100
55	3162	3143
50	3218	3197
45	3262	3255

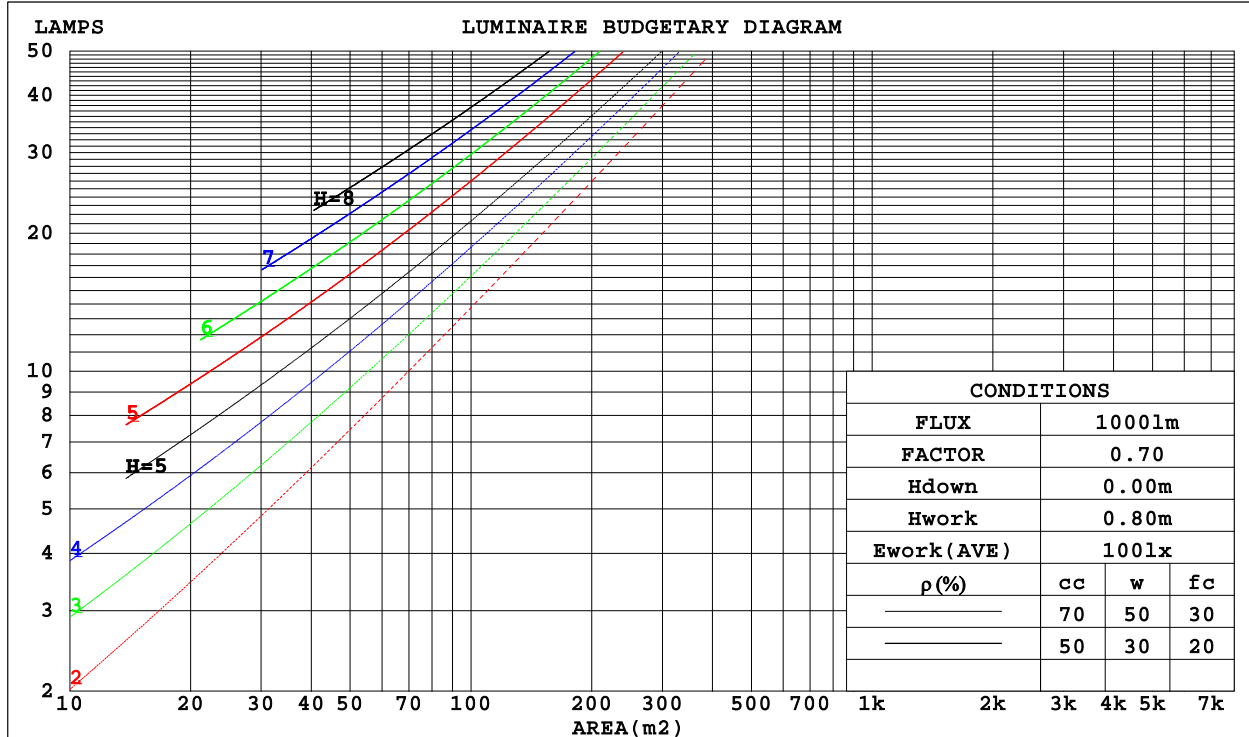
C Range: 0 - 360DEG  
 C Interval: 5.0DEG  
 Test Speed: HIGH  
 Temperature:22DEG  
 Operators:NEIKO  
 Test Date:2017-03-08

γ Range: 0 - 180DEG  
 γ Interval: 0.5DEG  
 Test System:EVERFINE GO-2000B\_V1 SYSTEM V2.0.350  
 Humidity:55%  
 Test Distance:12.218m [K=1.0000]  
 Remarks:

CU AND LUMINAIRE BUDGETARY ESTIMATE DIAGRAM

Test:U:120V I:0.2250A P:27W PF:0.9905 Lamp Flux:3064.5x1 lm		
NAME: ASD-ELP02-22D2735-STD	TYPE:LED PANEL	WEIGHT:
SPEC.:	DIM.: 603x603mm	SERIAL No.:BLD20170516P23
MFR.: ASD Lighting corp	SUR.:0.55*0.55	Shielding Angle:

$\rho_{cc}$	80%			70%			50%			30%			10%			0
$\rho_w$	50%	30%	10%	50%	30%	10%	50%	30%	10%	50%	30%	10%	50%	30%	10%	0
$\rho_{fc}$	20%			20%			20%			20%			20%			0
RCR	RCR:Room Cavity Ratio						Coefficients of Utilization(CU)									
0.0	1.19	1.19	1.19	1.16	1.16	1.16	1.11	1.11	1.11	1.06	1.06	1.06	1.02	1.02	1.02	.00
1.0	1.03	.99	.95	1.01	.97	.94	.97	.94	.91	.93	.90	.88	.89	.87	.85	.83
2.0	.90	.83	.77	.88	.82	.76	.84	.79	.74	.81	.77	.73	.78	.74	.71	.69
3.0	.79	.70	.64	.77	.69	.63	.74	.67	.62	.71	.66	.61	.69	.64	.60	.58
4.0	.70	.61	.54	.68	.60	.53	.66	.58	.53	.63	.57	.52	.61	.56	.51	.49
5.0	.62	.53	.46	.61	.52	.46	.59	.51	.45	.57	.50	.45	.55	.49	.44	.42
6.0	.56	.47	.40	.55	.46	.40	.53	.45	.40	.51	.44	.39	.50	.44	.39	.37
7.0	.51	.42	.35	.50	.41	.35	.48	.41	.35	.47	.40	.35	.45	.39	.34	.32
8.0	.46	.37	.32	.45	.37	.31	.44	.37	.31	.43	.36	.31	.42	.35	.31	.29
9.0	.42	.34	.28	.42	.34	.28	.41	.33	.28	.39	.33	.28	.38	.32	.28	.26
10.0	.39	.31	.26	.38	.31	.26	.37	.30	.25	.37	.30	.25	.36	.30	.25	.23



C Range: 0 - 360DEG  
 C Interval: 5.0DEG  
 Test Speed: HIGH  
 Temperature:22DEG  
 Operators:NEIKO  
 Test Date:2017-05-16

$\gamma$  Range: 0 - 180DEG  
 $\gamma$  Interval: 0.5DEG  
 Test System:EVERFINE GO-2000B\_V1 SYSTEM V2.0.350  
 Humidity:55%  
 Test Distance:12.218m [K=1.0000]  
 Remarks:

WEC AND CCEC

Test:U:120V I:0.2250A P:27W PF:0.9905 Lamp Flux:3064.5x1 lm		
NAME: ASD-ELP02-22D2735-STD	TYPE:LED PANEL	WEIGHT:
SPEC.:	DIM.: 603x603mm	SERIAL No.:BLD20170516P23
MFR.: ASD Lighting corp	SUR.:0.55*0.55	Shielding Angle:

pcc	80%			70%			50%			30%			10%			0
pw	50%	30%	10%	50%	30%	10%	50%	30%	10%	50%	30%	10%	50%	30%	10%	0
pfc	20%			20%			20%			20%			20%			0
RCR	RCR:Room Cavity Ratio						Wall Exitance Coefficients(WEC)									
0.0																
1.0	.317	.180	.057	.310	.177	.056	.297	.170	.054	.284	.164	.053	.273	.158	.051	
2.0	.297	.163	.050	.291	.160	.049	.279	.155	.048	.268	.150	.047	.258	.146	.046	
3.0	.274	.146	.044	.269	.144	.043	.258	.140	.043	.249	.136	.042	.240	.133	.041	
4.0	.252	.131	.039	.247	.130	.038	.238	.126	.038	.230	.123	.037	.222	.120	.037	
5.0	.233	.119	.034	.229	.117	.034	.220	.115	.034	.213	.112	.033	.206	.110	.033	
6.0	.216	.108	.031	.212	.107	.031	.205	.105	.030	.198	.103	.030	.191	.101	.030	
7.0	.201	.099	.028	.197	.098	.028	.191	.096	.028	.184	.095	.028	.179	.093	.027	
8.0	.187	.091	.026	.184	.091	.026	.178	.089	.025	.173	.088	.025	.168	.086	.025	
9.0	.175	.085	.024	.172	.084	.024	.167	.083	.023	.162	.081	.023	.158	.080	.023	
10.0	.165	.079	.022	.162	.078	.022	.157	.077	.022	.153	.076	.022	.149	.075	.021	

pcc	80%			70%			50%			30%			10%			0
pw	50%	30%	10%	50%	30%	10%	50%	30%	10%	50%	30%	10%	50%	30%	10%	0
pfc	20%			20%			20%			20%			20%			0
RCR	RCR:Room Cavity Ratio						Ceiling Cavity Exitance Coefficients(CCEC)									
0.0	.191	.191	.191	.163	.163	.163	.111	.111	.111	.064	.064	.064	.020	.020	.020	
1.0	.181	.156	.134	.155	.134	.115	.106	.092	.080	.061	.053	.046	.020	.017	.015	
2.0	.173	.132	.097	.148	.114	.084	.102	.079	.059	.059	.046	.034	.019	.015	.011	
3.0	.165	.114	.074	.142	.099	.064	.097	.069	.045	.056	.040	.026	.018	.013	.009	
4.0	.158	.101	.058	.135	.087	.050	.093	.061	.035	.054	.036	.021	.017	.012	.007	
5.0	.150	.091	.047	.129	.079	.041	.089	.055	.029	.052	.032	.017	.017	.011	.006	
6.0	.143	.082	.039	.123	.071	.034	.085	.050	.024	.049	.029	.014	.016	.010	.005	
7.0	.136	.076	.033	.117	.065	.029	.081	.046	.020	.047	.027	.012	.015	.009	.004	
8.0	.130	.070	.029	.112	.061	.025	.077	.042	.018	.045	.025	.011	.015	.008	.003	
9.0	.124	.065	.025	.106	.056	.022	.074	.040	.016	.043	.023	.009	.014	.008	.003	
10.0	.118	.061	.022	.102	.053	.020	.070	.037	.014	.041	.022	.008	.013	.007	.003	

C Range: 0 - 360DEG  
 C Interval: 5.0DEG  
 Test Speed: HIGH  
 Temperature:22DEG  
 Operators:NEIKO  
 Test Date:2017-05-16

γ Range: 0 - 180DEG  
 γ Interval: 0.5DEG  
 Test System:EVERFINE GO-2000B\_V1 SYSTEM V2.0.350  
 Humidity:55%  
 Test Distance:12.218m [K=1.0000]  
 Remarks:

UGR(Unified Glare Rating) Table

Test:U:120V I:0.2250A P:27W PF:0.9905 Lamp Flux:3064.5x1 lm										
NAME: ASD-ELP02-22D2735-STD					TYPE:LED PANEL			WEIGHT:		
SPEC.:					DIM.: 603x603mm			SERIAL No.:BLD20170516P23		
MFR.: ASD Lighting corp					SUR.:0.55*0.55			Shielding Angle:		
ceiling/cavity	0.7	0.7	0.5	0.5	0.3	0.7	0.7	0.5	0.5	0.3
walls	0.5	0.3	0.5	0.3	0.3	0.5	0.3	0.5	0.3	0.3
working plane	0.2	0.2	0.2	0.2	0.2	0.2	0.2	0.2	0.2	0.2
Room dimensions	Viewed crosswise					Viewed endwise				
x = 2H y = 2H	16.8	18.4	17.1	18.6	18.8	16.9	18.4	17.1	18.6	18.8
3H 4H 6H 8H 12H	18.4	19.8	18.7	20.1	20.3	18.5	19.9	18.8	20.1	20.4
	19.1	20.4	19.4	20.7	20.9	19.1	20.5	19.5	20.7	21.0
4H 2H	19.5	20.8	19.9	21.1	21.4	19.6	20.9	20.0	21.2	21.5
3H 4H 6H 8H	19.6	20.9	20.0	21.2	21.5	19.8	21.0	20.2	21.3	21.6
12H	19.7	20.9	20.0	21.2	21.5	19.9	21.1	20.3	21.4	21.7
8H 4H	17.5	18.8	17.8	19.1	19.3	17.5	18.8	17.8	19.1	19.4
6H 8H 12H	19.2	20.4	19.6	20.7	21.0	19.3	20.5	19.6	20.8	21.1
	20.0	21.1	20.4	21.4	21.8	20.1	21.2	20.5	21.5	21.8
12H 4H	20.6	21.6	21.0	21.9	22.3	20.7	21.7	21.1	22.0	22.4
	20.8	21.7	21.2	22.0	22.4	21.0	21.9	21.4	22.2	22.6
	20.9	21.7	21.3	22.1	22.5	21.1	21.9	21.5	22.3	22.7
	20.3	21.2	20.7	21.6	22.0	20.4	21.3	20.8	21.6	22.0
	21.1	21.8	21.5	22.2	22.6	21.2	21.9	21.6	22.3	22.8
	21.3	22.0	21.8	22.4	22.9	21.5	22.2	21.9	22.6	23.0
	21.5	22.1	22.0	22.5	23.0	21.7	22.3	22.2	22.7	23.2
	20.3	21.2	20.8	21.5	21.9	20.4	21.2	20.8	21.6	22.0
	21.1	21.8	21.6	22.2	22.7	21.2	21.9	21.7	22.3	22.8
	21.4	22.0	21.9	22.5	22.9	21.6	22.2	22.1	22.6	23.1
Variations with the observer position at spacings:										
S = 1.0H	+ 0.1 / - 0.2					+ 0.1 / - 0.2				
1.5H	+ 0.2 / - 0.3					+ 0.2 / - 0.3				
2.0H	+ 0.2 / - 0.2					+ 0.1 / - 0.3				

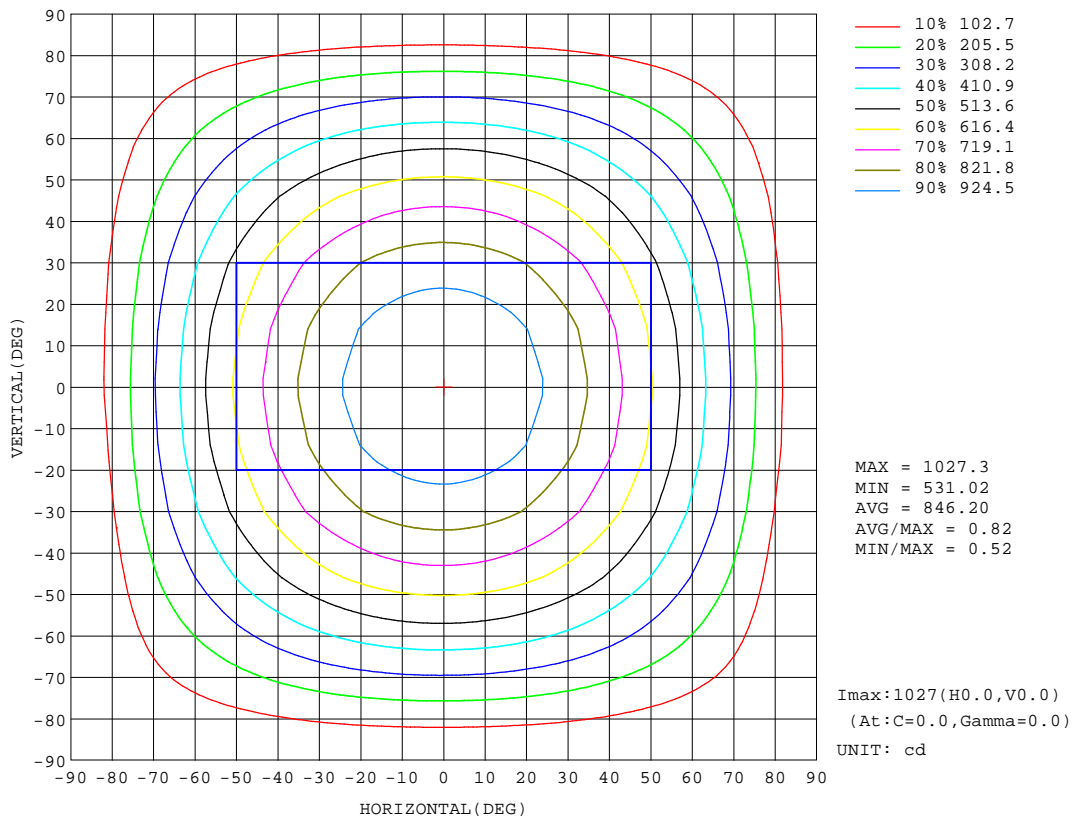
CIE Pub.117 Corrected 3012 lm Total Lamp Luminous Flux.(8log(F/F0) = 3.8)

C Range: 0 - 360DEG  
 C Interval: 5.0DEG  
 Test Speed: HIGH  
 Temperature:22DEG  
 Operators:NEIKO  
 Test Date:2017-03-08

γ Range: 0 - 180DEG  
 γ Interval: 0.5DEG  
 Test System:EVERFINE GO-2000B\_V1 SYSTEM V2.0.350  
 Humidity:55%  
 Test Distance:12.218m [K=1.0000]  
 Remarks:

ISOCANDELA DIAGRAM

Test:U:120V I:0.2250A P:27W PF:0.9905 Lamp Flux:3064.5x1 lm		
NAME: ASD-ELP02-22D2735-STD	TYPE:LED PANEL	WEIGHT:
SPEC.:	DIM.: 603x603mm	SERIAL No.:BLD20170516P23
MFR.: ASD Lighting corp	SUR.:0.55*0.55	Shielding Angle:



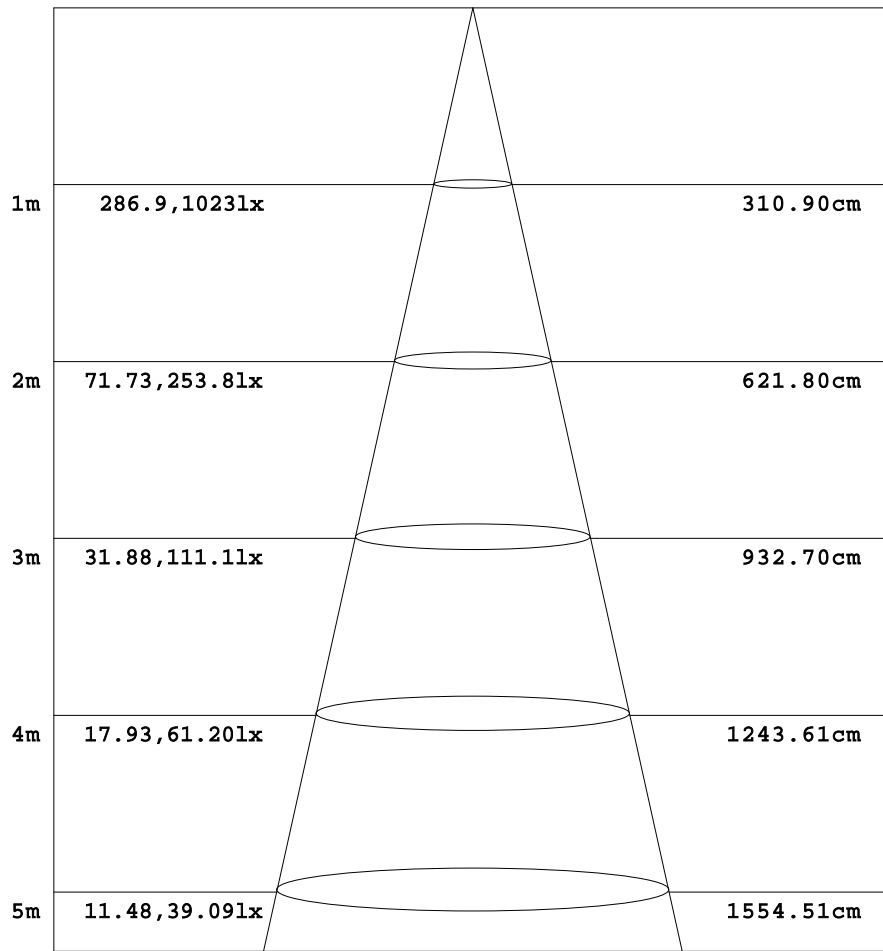
C Range: 0 - 360DEG  
 C Interval: 5.0DEG  
 Test Speed: HIGH  
 Temperature:22DEG  
 Operators:NEIKO  
 Test Date:2017-03-08

γ Range: 0 - 180DEG  
 γ Interval: 0.5DEG  
 Test System:EVERFINE GO-2000B\_V1 SYSTEM V2.0.350  
 Humidity:55%  
 Test Distance:12.218m [K=1.0000]  
 Remarks:

AAI Figure

Test:U:120V I:0.2250A P:27W PF:0.9905 Lamp Flux:3064.5x1 lm		
NAME: ASD-ELP02-22D2735-STD	TYPE:LED PANEL	WEIGHT:
SPEC.:	DIM.: 603x603mm	SERIAL No.:BLD20170516P23
MFR.: ASD Lighting corp	SUR.:0.55*0.55	Shielding Angle:

Flux out:2220 lm



Height                      Eavg, Emax                      Angle:114.49deg                      Diameter

Note:The Curves indicate the illuminated area and the average illumination when the luminaire is at different distance.

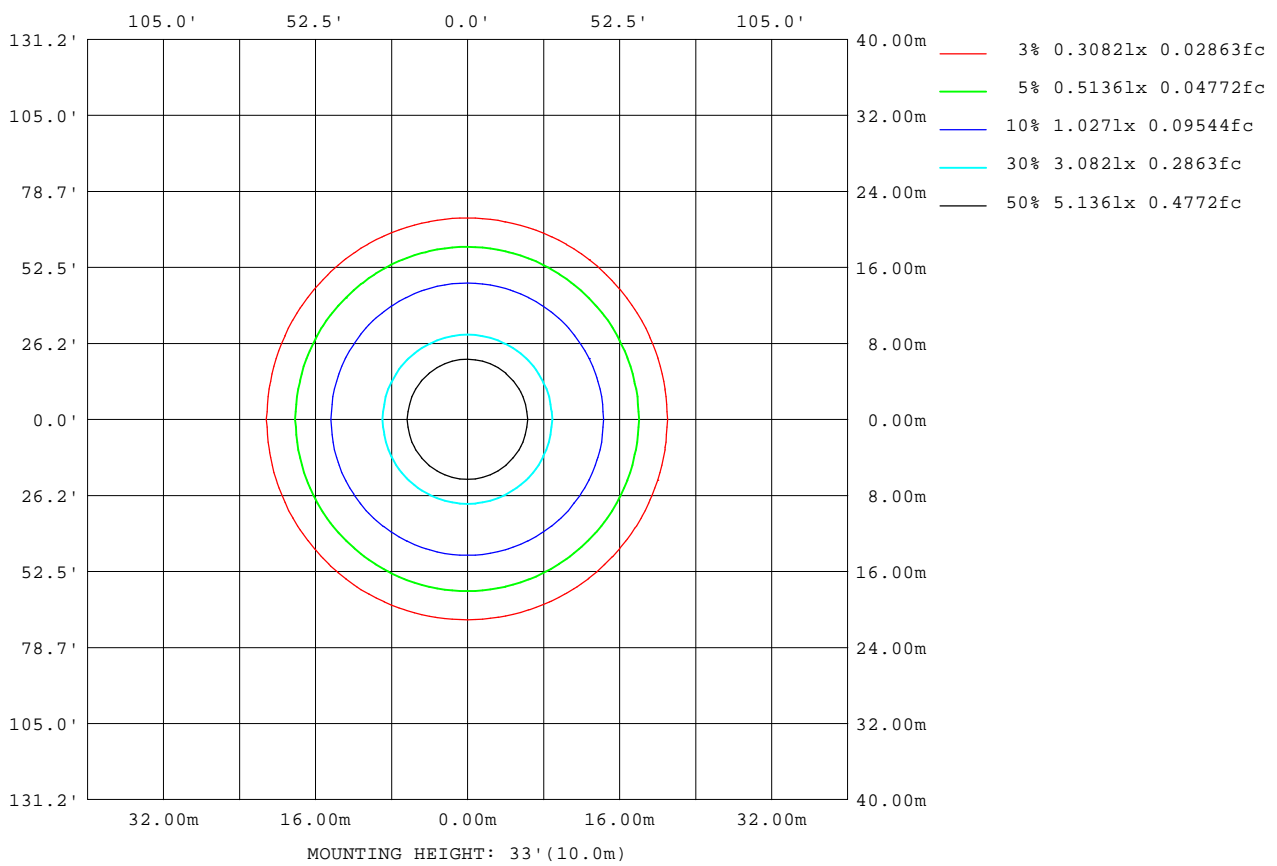
C Range: 0 - 360DEG  
 C Interval: 5.0DEG  
 Test Speed: HIGH  
 Temperature:22DEG  
 Operators:NEIKO  
 Test Date:2017-05-16

γ Range: 0 - 180DEG  
 γ Interval: 0.5DEG  
 Test System:EVERFINE GO-2000B\_V1 SYSTEM V2.0.350  
 Humidity:55%  
 Test Distance:12.218m [K=1.0000]  
 Remarks:



ISOLUX DIAGRAM

Test:U:120V I:0.2250A P:27W PF:0.9905 Lamp Flux:3064.5x1 lm		
NAME: ASD-ELP02-22D2735-STD	TYPE:LED PANEL	WEIGHT:
SPEC.:	DIM.: 603x603mm	SERIAL No.:BLD20170516P23
MFR.: ASD Lighting corp	SUR.:0.55*0.55	Shielding Angle:



C Range: 0 - 360DEG  
 C Interval: 5.0DEG  
 Test Speed: HIGH  
 Temperature:22DEG  
 Operators:NEIKO  
 Test Date:2017-05-16

γ Range: 0 - 180DEG  
 γ Interval: 0.5DEG  
 Test System:EVERFINE GO-2000B\_V1 SYSTEM V2.0.350  
 Humidity:55%  
 Test Distance:12.218m [K=1.0000]  
 Remarks:

## LED Avg.L Report

Test:U:120V I:0.2250A P:27W PF:0.9905 Lamp Flux:3064.5x1 lm		
NAME: ASD-ELP02-22D2735-STD	TYPE:LED PANEL	WEIGHT:
SPEC.:	DIM.: 603x603mm	SERIAL No.:BLD20170516P23
MFR.: ASD Lighting corp	SUR.:0.55*0.55	Shielding Angle:

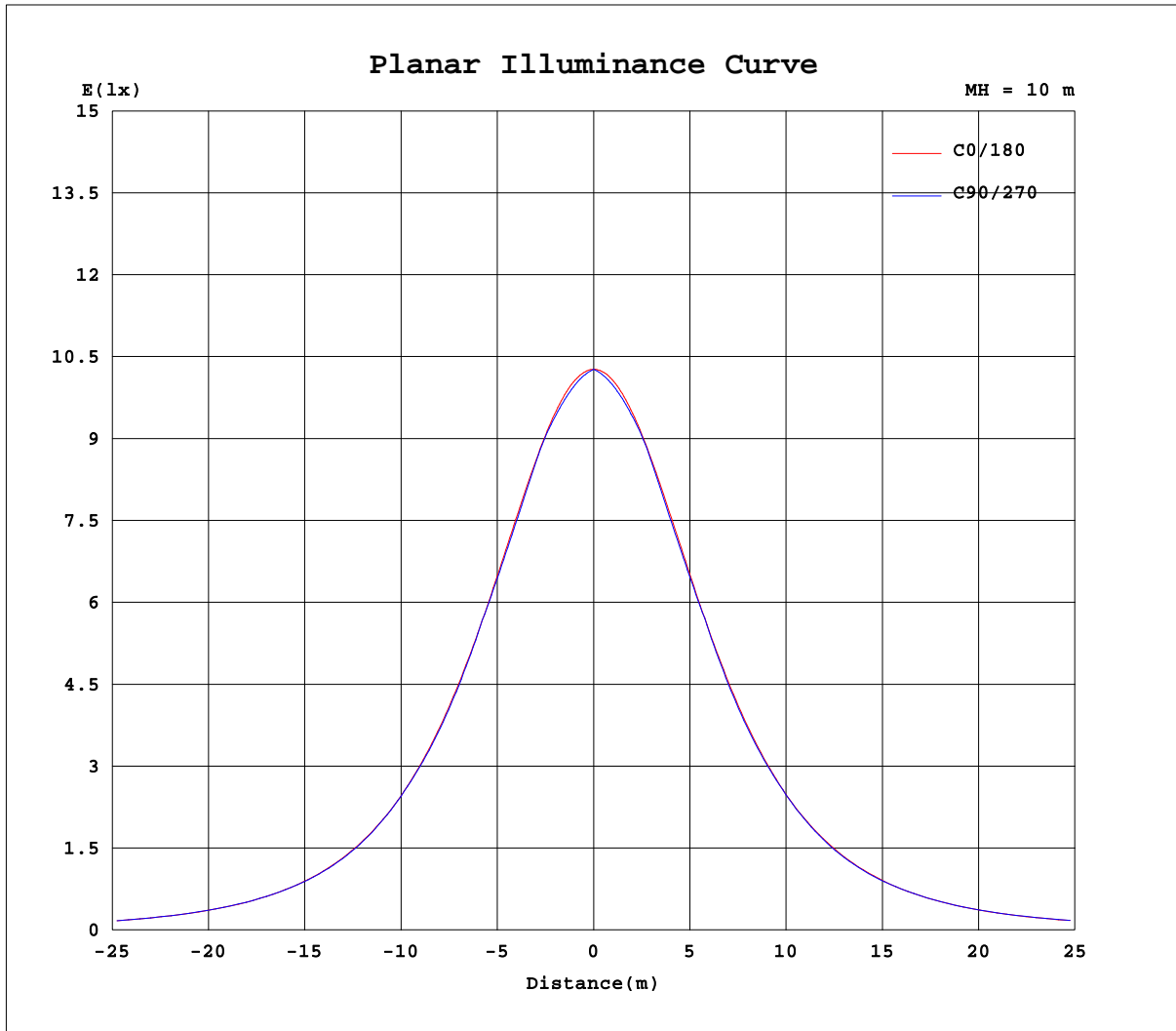
AvgL	cd/m2
L_0~180(65)av	3027
L_0~180(75)av	2742
L_0~180(85)av	1694
L_90~270(65)av	3040
L_90~270(75)av	2827
L_90~270(85)av	2286
L_45(65)av	3019
L_45(75)av	2786
L_45(85)av	2233

Standard: GB/T 29293-2012

C Range: 0 - 360DEG  
C Interval: 5.0DEG  
Test Speed: HIGH  
Temperature:22DEG  
Operators:NEIKO  
Test Date:2017-05-16

$\gamma$  Range: 0 - 180DEG  
 $\gamma$  Interval: 0.5DEG  
Test System:EVERFINE GO-2000B\_V1 SYSTEM V2.0.350  
Humidity:55%  
Test Distance:12.218m [K=1.0000]  
Remarks:

Planar Illuminance Curve



C Range: 0 - 360DEG  
 C Interval: 5.0DEG  
 Test Speed: HIGH  
 Temperature: 22DEG  
 Operators: NEIKO  
 Test Date: 2017-05-16

$\gamma$  Range: 0 - 180DEG  
 $\gamma$  Interval: 0.5DEG  
 Test System: EVERFINE GO-2000B\_V1 SYSTEM V2.0.350  
 Humidity: 55%  
 Test Distance: 12.218m [K=1.0000]  
 Remarks:

LUMINOUS DISTRIBUTION INTENSITY DATA

Test:U:120V I:0.2250A P:27W PF:0.9905 Lamp Flux:3064.5x1 lm		
NAME: ASD-ELP02-22D2735-STD	TYPE:LED PANEL	WEIGHT:
SPEC.:	DIM.: 603x603mm	SERIAL No.:BLD20170516P23
MFR.: ASD Lighting corp	SUR.:0.55*0.55	Shielding Angle:

Table--1

UNIT: cd

C(DEG) γ (DEG)	0	5	10	15	20	25	30	35	40	45	50	55	60	65	70	75	80	85	90
0	1027	1027	1027	1027	1027	1027	1027	1027	1027	1027	1027	1027	1027	1027	1027	1027	1027	1027	1027
5	1022	1021	1020	1019	1018	1018	1017	1016	1016	1015	1015	1015	1014	1014	1014	1014	1014	1014	1014
10	1009	1007	1005	1004	1002	1001	1000	1000	1000	1000	1000	1000	1000	1000	1000	1000	1001	1001	1001
15	988	985	982	980	979	978	978	978	979	980	981	982	983	984	985	985	985	985	985
20	958	954	951	949	949	949	950	951	954	955	955	954	952	951	951	950	950	950	950
25	920	915	912	911	911	913	916	917	916	914	912	911	911	911	911	911	912	912	912
30	875	869	867	866	868	872	872	868	866	866	866	867	868	870	871	872	873	874	875
35	822	816	814	815	819	819	815	813	813	815	817	820	819	817	816	816	815	815	815
40	763	757	755	758	761	756	754	755	758	760	757	755	755	754	755	755	755	756	756
45	697	691	690	695	691	689	691	695	691	690	689	689	690	691	693	694	695	695	695
50	625	619	621	622	618	620	622	619	618	618	620	622	623	622	621	620	620	620	621
55	548	542	547	543	543	545	542	542	544	546	545	543	543	543	543	543	544	544	544
60	467	462	465	462	465	462	462	465	464	462	462	463	463	464	465	466	467	468	468
65	383	380	379	381	379	380	381	379	379	380	381	382	383	383	383	383	384	384	384
70	297	296	294	294	296	295	295	296	297	297	297	298	298	299	299	299	300	300	300
75	212	211	210	211	211	211	212	212	213	213	214	214	215	216	216	216	217	217	217
80	131	124	123	127	130	131	131	131	131	131	132	132	133	134	134	135	135	135	136
85	46.8	37.6	43.4	50.8	53.8	54.6	55.4	55.9	56.0	55.9	55.7	55.4	55.5	55.6	55.6	55.7	56.1	56.6	56.8
90	0.71	1.44	1.42	1.38	1.35	1.53	1.83	2.23	2.47	2.61	2.74	2.91	3.15	3.50	3.88	4.30	4.79	5.22	5.41
95	0.00	0.00	0.00	0.00	0.00	0.00	0.00	0.00	0.00	0.00	0.00	0.00	0.00	0.00	0.00	0.00	0.00	0.00	0.00
100	0.00	0.00	0.00	0.00	0.00	0.00	0.00	0.00	0.00	0.00	0.00	0.00	0.00	0.00	0.00	0.00	0.00	0.00	0.00
105	0.00	0.00	0.00	0.00	0.00	0.00	0.00	0.00	0.00	0.00	0.00	0.00	0.00	0.00	0.00	0.00	0.00	0.00	0.00
110	0.00	0.00	0.00	0.00	0.00	0.00	0.00	0.00	0.00	0.00	0.00	0.00	0.00	0.00	0.00	0.00	0.00	0.00	0.00
115	0.00	0.00	0.00	0.00	0.00	0.00	0.00	0.00	0.00	0.00	0.00	0.00	0.00	0.00	0.00	0.00	0.00	0.00	0.00
120	0.00	0.00	0.00	0.00	0.00	0.00	0.00	0.00	0.00	0.00	0.00	0.00	0.00	0.00	0.00	0.00	0.00	0.00	0.00
125	0.00	0.00	0.00	0.00	0.00	0.00	0.00	0.00	0.00	0.00	0.00	0.00	0.00	0.00	0.00	0.00	0.00	0.00	0.00
130	0.00	0.00	0.00	0.00	0.00	0.00	0.00	0.00	0.00	0.00	0.00	0.00	0.00	0.00	0.00	0.00	0.00	0.00	0.00
135	0.00	0.00	0.00	0.00	0.00	0.00	0.00	0.00	0.00	0.00	0.00	0.00	0.00	0.00	0.00	0.00	0.00	0.00	0.00
140	0.00	0.00	0.00	0.00	0.00	0.00	0.00	0.00	0.00	0.00	0.00	0.00	0.00	0.00	0.00	0.00	0.00	0.00	0.00
145	0.00	0.00	0.00	0.00	0.00	0.00	0.00	0.00	0.00	0.00	0.00	0.00	0.00	0.00	0.00	0.00	0.00	0.00	0.00
150	0.00	0.00	0.00	0.00	0.00	0.00	0.00	0.00	0.00	0.00	0.00	0.00	0.00	0.00	0.00	0.00	0.00	0.00	0.00
155	0.00	0.00	0.00	0.00	0.00	0.00	0.00	0.00	0.00	0.00	0.00	0.00	0.00	0.00	0.00	0.00	0.00	0.00	0.00
160	0.00	0.00	0.00	0.00	0.00	0.00	0.00	0.00	0.00	0.00	0.00	0.00	0.00	0.00	0.00	0.00	0.00	0.00	0.00
165	0.00	0.00	0.00	0.00	0.00	0.00	0.00	0.00	0.00	0.00	0.00	0.00	0.00	0.00	0.00	0.00	0.00	0.00	0.00
170	0.00	0.00	0.00	0.00	0.00	0.00	0.00	0.00	0.00	0.00	0.00	0.00	0.00	0.00	0.00	0.00	0.00	0.00	0.00
175	0.00	0.00	0.00	0.00	0.00	0.00	0.00	0.00	0.00	0.00	0.00	0.00	0.00	0.00	0.00	0.00	0.00	0.00	0.00
180	0.00	0.00	0.00	0.00	0.00	0.00	0.00	0.00	0.00	0.00	0.00	0.00	0.00	0.00	0.00	0.00	0.00	0.00	0.00

C Range: 0 - 360DEG  
 C Interval: 5.0DEG  
 Test Speed: HIGH  
 Temperature:22DEG  
 Operators:NEIKO  
 Test Date:2017-05-16

γ Range: 0 - 180DEG  
 γ Interval: 0.5DEG  
 Test System:EVERFINE GO-2000B\_V1 SYSTEM V2.0.350  
 Humidity:55%  
 Test Distance:12.218m [K=1.0000]  
 Remarks:

LUMINOUS DISTRIBUTION INTENSITY DATA

Test:U:120V I:0.2250A P:27W PF:0.9905 Lamp Flux:3064.5x1 lm		
NAME: ASD-ELP02-22D2735-STD	TYPE:LED PANEL	WEIGHT:
SPEC.:	DIM.: 603x603mm	SERIAL No.:BLD20170516P23
MFR.: ASD Lighting corp	SUR.:0.55*0.55	Shielding Angle:

Table--2

UNIT: cd

C(DEG) γ (DEG)	95	100	105	110	115	120	125	130	135	140	145	150	155	160	165	170	175	180	185
0	1027	1027	1027	1027	1027	1027	1027	1027	1027	1027	1027	1027	1027	1027	1027	1027	1027	1027	1027
5	1014	1014	1014	1014	1015	1015	1015	1016	1016	1017	1017	1018	1019	1019	1020	1021	1022	1023	1022
10	1001	1001	1001	1001	1001	1001	1001	1001	1001	1001	1001	1002	1003	1004	1005	1007	1009	1011	1009
15	985	985	986	986	985	984	983	982	981	981	980	980	981	981	983	985	987	990	987
20	950	951	951	952	953	954	956	957	957	956	954	952	952	952	952	954	957	961	958
25	913	913	913	913	913	913	914	915	916	919	920	919	916	915	915	916	920	924	920
30	875	874	874	873	872	870	869	869	869	870	872	875	875	872	870	871	874	880	874
35	816	816	817	818	820	822	824	821	819	818	818	819	823	823	820	819	822	828	822
40	756	756	757	757	757	758	759	761	765	763	761	759	761	765	763	761	763	769	763
45	695	696	696	695	694	693	693	693	694	697	701	697	695	697	700	696	697	703	697
50	621	621	622	623	624	626	626	625	623	623	625	629	626	625	628	627	626	632	626
55	545	545	545	545	546	546	548	549	551	550	548	549	553	550	549	553	550	556	550
60	468	468	468	468	468	467	467	467	468	469	471	469	469	473	469	471	469	474	469
65	385	385	385	386	386	387	387	386	386	385	385	387	386	385	388	385	386	390	386
70	301	301	301	302	302	302	302	302	302	302	301	300	300	301	300	300	301	303	302
75	217	218	218	218	218	218	217	217	217	216	216	216	216	215	215	214	214	217	215
80	136	136	136	136	136	135	134	134	134	134	134	134	134	133	128	121	122	135	134
85	56.5	56.4	56.3	56.5	57.0	57.1	57.1	57.2	57.3	57.6	57.8	57.7	57.1	56.1	51.9	44.2	36.3	42.3	51.4
90	5.12	4.78	4.39	4.15	4.13	3.97	3.70	3.40	2.99	2.86	2.76	2.44	1.87	1.36	1.35	1.34	1.33	1.19	0.81
95	0.00	0.00	0.00	0.00	0.00	0.00	0.00	0.00	0.00	0.00	0.00	0.00	0.00	0.00	0.00	0.00	0.00	0.00	0.00
100	0.00	0.00	0.00	0.00	0.00	0.00	0.00	0.00	0.00	0.00	0.00	0.00	0.00	0.00	0.00	0.00	0.00	0.00	0.00
105	0.00	0.00	0.00	0.00	0.00	0.00	0.00	0.00	0.00	0.00	0.00	0.00	0.00	0.00	0.00	0.00	0.00	0.00	0.00
110	0.00	0.00	0.00	0.00	0.00	0.00	0.00	0.00	0.00	0.00	0.00	0.00	0.00	0.00	0.00	0.00	0.00	0.00	0.00
115	0.00	0.00	0.00	0.00	0.00	0.00	0.00	0.00	0.00	0.00	0.00	0.00	0.00	0.00	0.00	0.00	0.00	0.00	0.00
120	0.00	0.00	0.00	0.00	0.00	0.00	0.00	0.00	0.00	0.00	0.00	0.00	0.00	0.00	0.00	0.00	0.00	0.00	0.00
125	0.00	0.00	0.00	0.00	0.00	0.00	0.00	0.00	0.00	0.00	0.00	0.00	0.00	0.00	0.00	0.00	0.00	0.00	0.00
130	0.00	0.00	0.00	0.00	0.00	0.00	0.00	0.00	0.00	0.00	0.00	0.00	0.00	0.00	0.00	0.00	0.00	0.00	0.00
135	0.00	0.00	0.00	0.00	0.00	0.00	0.00	0.00	0.00	0.00	0.00	0.00	0.00	0.00	0.00	0.00	0.00	0.00	0.00
140	0.00	0.00	0.00	0.00	0.00	0.00	0.00	0.00	0.00	0.00	0.00	0.00	0.00	0.00	0.00	0.00	0.00	0.00	0.00
145	0.00	0.00	0.00	0.00	0.00	0.00	0.00	0.00	0.00	0.00	0.00	0.00	0.00	0.00	0.00	0.00	0.00	0.00	0.00
150	0.00	0.00	0.00	0.00	0.00	0.00	0.00	0.00	0.00	0.00	0.00	0.00	0.00	0.00	0.00	0.00	0.00	0.00	0.00
155	0.00	0.00	0.00	0.00	0.00	0.00	0.00	0.00	0.00	0.00	0.00	0.00	0.00	0.00	0.00	0.00	0.00	0.00	0.00
160	0.00	0.00	0.00	0.00	0.00	0.00	0.00	0.00	0.00	0.00	0.00	0.00	0.00	0.00	0.00	0.00	0.00	0.00	0.00
165	0.00	0.00	0.00	0.00	0.00	0.00	0.00	0.00	0.00	0.00	0.00	0.00	0.00	0.00	0.00	0.00	0.00	0.00	0.00
170	0.00	0.00	0.00	0.00	0.00	0.00	0.00	0.00	0.00	0.00	0.00	0.00	0.00	0.00	0.00	0.00	0.00	0.00	0.00
175	0.00	0.00	0.00	0.00	0.00	0.00	0.00	0.00	0.00	0.00	0.00	0.00	0.00	0.00	0.00	0.00	0.00	0.00	0.00
180	0.00	0.00	0.00	0.00	0.00	0.00	0.00	0.00	0.00	0.00	0.00	0.00	0.00	0.00	0.00	0.00	0.00	0.00	0.00

C Range: 0 - 360DEG  
 C Interval: 5.0DEG  
 Test Speed: HIGH  
 Temperature:22DEG  
 Operators:NEIKO  
 Test Date:2017-05-16

γ Range: 0 - 180DEG  
 γ Interval: 0.5DEG  
 Test System:EVERFINE GO-2000B\_V1 SYSTEM V2.0.350  
 Humidity:55%  
 Test Distance:12.218m [K=1.0000]  
 Remarks:

LUMINOUS DISTRIBUTION INTENSITY DATA

Test:U:120V I:0.2250A P:27W PF:0.9905 Lamp Flux:3064.5x1 lm		
NAME: ASD-ELP02-22D2735-STD	TYPE:LED PANEL	WEIGHT:
SPEC.:	DIM.: 603x603mm	SERIAL No.:BLD20170516P23
MFR.: ASD Lighting corp	SUR.:0.55*0.55	Shielding Angle:

Table--3

UNIT: cd

C(DEG) γ (DEG)	190	195	200	205	210	215	220	225	230	235	240	245	250	255	260	265	270	275	280
0	1027	1027	1027	1027	1027	1027	1027	1027	1027	1027	1027	1027	1027	1027	1027	1027	1027	1027	1027
5	1021	1020	1020	1019	1018	1018	1017	1017	1016	1016	1016	1015	1015	1015	1015	1015	1015	1015	1015
10	1007	1006	1004	1004	1003	1002	1002	1002	1002	1002	1002	1002	1002	1002	1002	1002	1002	1002	1002
15	985	983	982	981	981	981	982	983	984	985	986	987	988	988	988	988	988	987	987
20	955	953	952	953	954	955	957	959	959	958	956	955	954	954	953	953	953	953	953
25	917	916	916	918	921	922	921	919	917	916	916	916	916	916	916	916	916	916	915
30	872	871	873	877	877	874	872	872	872	873	874	875	877	878	879	879	879	879	878
35	820	821	825	825	821	820	821	822	825	828	826	824	822	822	821	821	820	820	820
40	761	764	767	763	762	763	766	768	765	763	762	762	762	762	762	762	761	761	761
45	697	701	698	697	699	704	700	698	697	697	698	699	701	702	701	701	701	701	701
50	628	629	626	628	632	628	627	627	629	631	631	630	629	628	628	627	627	627	627
55	554	551	552	555	552	551	553	555	554	553	552	552	552	552	552	552	551	551	551
60	472	470	474	471	472	474	473	472	472	473	473	474	475	475	476	476	476	475	474
65	386	389	387	389	390	389	389	390	392	393	393	393	393	392	392	392	392	391	391
70	301	301	303	303	304	305	307	307	308	308	308	308	308	308	308	308	308	308	307
75	216	217	217	219	220	221	221	222	223	224	225	225	225	225	225	225	225	225	224
80	135	135	136	137	138	138	139	139	140	140	142	143	143	143	143	143	143	143	142
85	51.7	54.3	58.6	60.3	61.3	61.7	61.9	62.1	62.2	62.2	62.5	62.7	62.7	62.8	63.2	63.5	63.5	63.3	62.8
90	0.81	0.82	0.84	1.72	2.74	3.35	3.93	4.51	5.02	5.50	5.87	6.29	6.73	7.23	7.82	8.26	8.38	8.21	7.71
95	0.00	0.00	0.00	0.00	0.00	0.00	0.00	0.00	0.00	0.00	0.00	0.00	0.00	0.00	0.00	0.00	0.00	0.00	0.00
100	0.00	0.00	0.00	0.00	0.00	0.00	0.00	0.00	0.00	0.00	0.00	0.00	0.00	0.00	0.00	0.00	0.00	0.00	0.00
105	0.00	0.00	0.00	0.00	0.00	0.00	0.00	0.00	0.00	0.00	0.00	0.00	0.00	0.00	0.00	0.00	0.00	0.00	0.00
110	0.00	0.00	0.00	0.00	0.00	0.00	0.00	0.00	0.00	0.00	0.00	0.00	0.00	0.00	0.00	0.00	0.00	0.00	0.00
115	0.00	0.00	0.00	0.00	0.00	0.00	0.00	0.00	0.00	0.00	0.00	0.00	0.00	0.00	0.00	0.00	0.00	0.00	0.00
120	0.00	0.00	0.00	0.00	0.00	0.00	0.00	0.00	0.00	0.00	0.00	0.00	0.00	0.00	0.00	0.00	0.00	0.00	0.00
125	0.00	0.00	0.00	0.00	0.00	0.00	0.00	0.00	0.00	0.00	0.00	0.00	0.00	0.00	0.00	0.00	0.00	0.00	0.00
130	0.00	0.00	0.00	0.00	0.00	0.00	0.00	0.00	0.00	0.00	0.00	0.00	0.00	0.00	0.00	0.00	0.00	0.00	0.00
135	0.00	0.00	0.00	0.00	0.00	0.00	0.00	0.00	0.00	0.00	0.00	0.00	0.00	0.00	0.00	0.00	0.00	0.00	0.00
140	0.00	0.00	0.00	0.00	0.00	0.00	0.00	0.00	0.00	0.00	0.00	0.00	0.00	0.00	0.00	0.00	0.00	0.00	0.00
145	0.00	0.00	0.00	0.00	0.00	0.00	0.00	0.00	0.00	0.00	0.00	0.00	0.00	0.00	0.00	0.00	0.00	0.00	0.00
150	0.00	0.00	0.00	0.00	0.00	0.00	0.00	0.00	0.00	0.00	0.00	0.00	0.00	0.00	0.00	0.00	0.00	0.00	0.00
155	0.00	0.00	0.00	0.00	0.00	0.00	0.00	0.00	0.00	0.00	0.00	0.00	0.00	0.00	0.00	0.00	0.00	0.00	0.00
160	0.00	0.00	0.00	0.00	0.00	0.00	0.00	0.00	0.00	0.00	0.00	0.00	0.00	0.00	0.00	0.00	0.00	0.00	0.00
165	0.00	0.00	0.00	0.00	0.00	0.00	0.00	0.00	0.00	0.00	0.00	0.00	0.00	0.00	0.00	0.00	0.00	0.00	0.00
170	0.00	0.00	0.00	0.00	0.00	0.00	0.00	0.00	0.00	0.00	0.00	0.00	0.00	0.00	0.00	0.00	0.00	0.00	0.00
175	0.00	0.00	0.00	0.00	0.00	0.00	0.00	0.00	0.00	0.00	0.00	0.00	0.00	0.00	0.00	0.00	0.00	0.00	0.00
180	0.00	0.00	0.00	0.00	0.00	0.00	0.00	0.00	0.00	0.00	0.00	0.00	0.00	0.00	0.00	0.00	0.00	0.00	0.00

C Range: 0 - 360DEG  
 C Interval: 5.0DEG  
 Test Speed: HIGH  
 Temperature:22DEG  
 Operators:NEIKO  
 Test Date:2017-05-16

γ Range: 0 - 180DEG  
 γ Interval: 0.5DEG  
 Test System:EVERFINE GO-2000B\_V1 SYSTEM V2.0.350  
 Humidity:55%  
 Test Distance:12.218m [K=1.0000]  
 Remarks:

LUMINOUS DISTRIBUTION INTENSITY DATA

Test:U:120V I:0.2250A P:27W PF:0.9905 Lamp Flux:3064.5x1 lm		
NAME: ASD-ELP02-22D2735-STD	TYPE:LED PANEL	WEIGHT:
SPEC.:	DIM.: 603x603mm	SERIAL No.:BLD20170516P23
MFR.: ASD Lighting corp	SUR.:0.55*0.55	Shielding Angle:

Table--4

UNIT: cd

C(DEC) γ (DEC)	285	290	295	300	305	310	315	320	325	330	335	340	345	350	355				
0	1027	1027	1027	1027	1027	1027	1027	1027	1027	1027	1027	1027	1027	1027	1027				
5	1015	1015	1015	1015	1015	1016	1016	1016	1017	1017	1018	1019	1020	1020	1021				
10	1002	1002	1001	1001	1001	1001	1001	1001	1001	1001	1002	1003	1004	1005	1007				
15	987	987	986	985	984	982	981	980	980	979	979	980	981	983	985				
20	953	954	954	955	957	957	957	956	953	951	950	950	950	952	954				
25	915	915	914	914	914	915	916	919	920	918	915	913	912	913	916				
30	877	875	873	872	870	869	869	869	871	874	874	870	867	867	870				
35	820	821	822	823	825	822	819	817	817	818	821	821	816	815	817				
40	760	760	760	760	760	762	764	762	759	757	759	763	760	756	757				
45	700	699	697	696	695	694	694	696	699	694	692	693	696	692	691				
50	627	627	628	629	628	626	624	623	623	626	623	621	624	622	620				
55	550	550	549	549	549	551	551	549	546	546	549	545	545	548	543				
60	473	472	471	470	469	468	468	469	470	466	465	468	464	466	463				
65	391	390	390	389	389	387	386	384	384	385	383	382	383	381	380				
70	307	306	306	305	304	303	303	302	300	298	298	298	296	296	297				
75	224	223	223	222	221	220	219	217	216	216	214	213	214	212	212				
80	142	141	141	140	138	137	137	136	135	134	133	133	132	132	130				
85	62.1	61.7	61.4	61.0	60.5	60.2	59.8	59.4	59.2	58.6	58.0	56.7	53.1	50.3	50.8				
90	7.08	6.47	5.91	5.34	4.75	4.15	3.52	2.84	2.36	1.60	0.85	0.84	0.84	0.84	0.84				
95	0.00	0.00	0.00	0.00	0.00	0.00	0.00	0.00	0.00	0.00	0.00	0.00	0.00	0.00	0.00				
100	0.00	0.00	0.00	0.00	0.00	0.00	0.00	0.00	0.00	0.00	0.00	0.00	0.00	0.00	0.00				
105	0.00	0.00	0.00	0.00	0.00	0.00	0.00	0.00	0.00	0.00	0.00	0.00	0.00	0.00	0.00				
110	0.00	0.00	0.00	0.00	0.00	0.00	0.00	0.00	0.00	0.00	0.00	0.00	0.00	0.00	0.00				
115	0.00	0.00	0.00	0.00	0.00	0.00	0.00	0.00	0.00	0.00	0.00	0.00	0.00	0.00	0.00				
120	0.00	0.00	0.00	0.00	0.00	0.00	0.00	0.00	0.00	0.00	0.00	0.00	0.00	0.00	0.00				
125	0.00	0.00	0.00	0.00	0.00	0.00	0.00	0.00	0.00	0.00	0.00	0.00	0.00	0.00	0.00				
130	0.00	0.00	0.00	0.00	0.00	0.00	0.00	0.00	0.00	0.00	0.00	0.00	0.00	0.00	0.00				
135	0.00	0.00	0.00	0.00	0.00	0.00	0.00	0.00	0.00	0.00	0.00	0.00	0.00	0.00	0.00				
140	0.00	0.00	0.00	0.00	0.00	0.00	0.00	0.00	0.00	0.00	0.00	0.00	0.00	0.00	0.00				
145	0.00	0.00	0.00	0.00	0.00	0.00	0.00	0.00	0.00	0.00	0.00	0.00	0.00	0.00	0.00				
150	0.00	0.00	0.00	0.00	0.00	0.00	0.00	0.00	0.00	0.00	0.00	0.00	0.00	0.00	0.00				
155	0.00	0.00	0.00	0.00	0.00	0.00	0.00	0.00	0.00	0.00	0.00	0.00	0.00	0.00	0.00				
160	0.00	0.00	0.00	0.00	0.00	0.00	0.00	0.00	0.00	0.00	0.00	0.00	0.00	0.00	0.00				
165	0.00	0.00	0.00	0.00	0.00	0.00	0.00	0.00	0.00	0.00	0.00	0.00	0.00	0.00	0.00				
170	0.00	0.00	0.00	0.00	0.00	0.00	0.00	0.00	0.00	0.00	0.00	0.00	0.00	0.00	0.00				
175	0.00	0.00	0.00	0.00	0.00	0.00	0.00	0.00	0.00	0.00	0.00	0.00	0.00	0.00	0.00				
180	0.00	0.00	0.00	0.00	0.00	0.00	0.00	0.00	0.00	0.00	0.00	0.00	0.00	0.00	0.00				

C Range: 0 - 360DEG  
 C Interval: 5.0DEG  
 Test Speed: HIGH  
 Temperature:22DEG  
 Operators:NEIKO  
 Test Date:2017-05-16

γ Range: 0 - 180DEG  
 γ Interval: 0.5DEG  
 Test System:EVERFINE GO-2000B\_V1 SYSTEM V2.0.350  
 Humidity:55%  
 Test Distance:12.218m [K=1.0000]  
 Remarks: