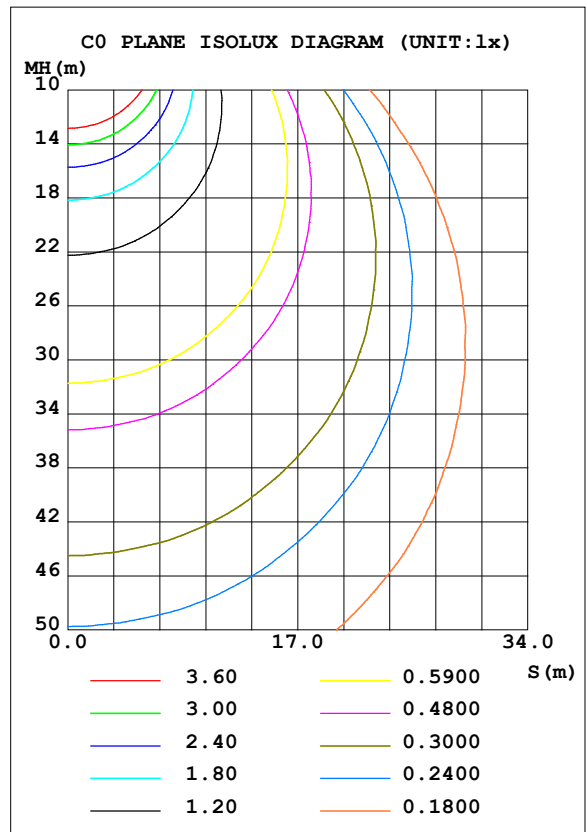
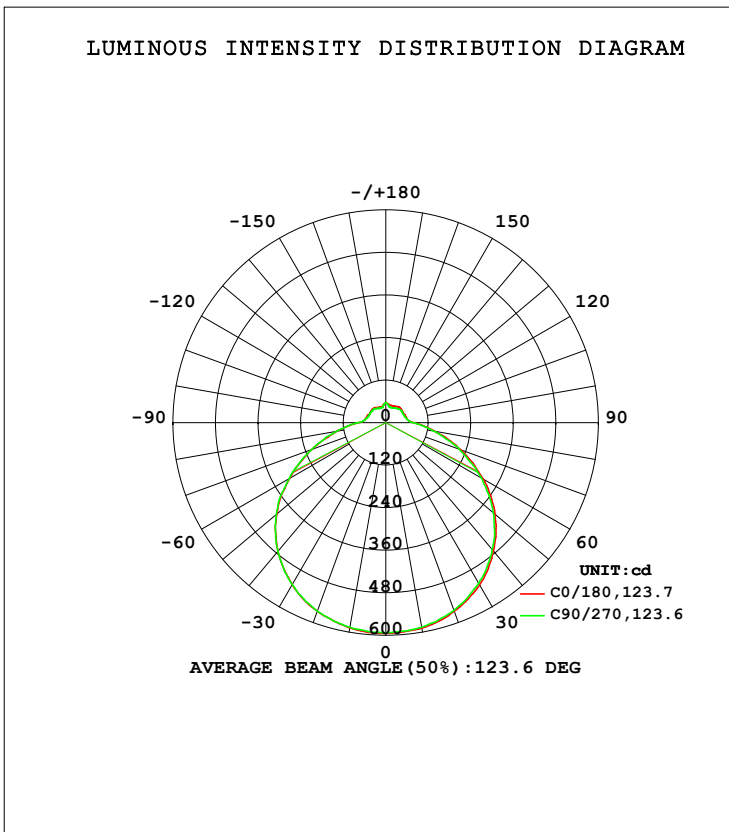


LUMINAIRE PHOTOMETRIC TEST REPORT

Test:U:120.07V I:0.3849A P:41.783W PF:0.9032 Freq:0Hz Lamp Flux:2356.83x1 lm		
NAME: ADS lighting Corp	TYPE:	WEIGHT:
SPEC.:ASD-LFC-LF-20D42-AC-NK-3500K	DIM.:	SERIAL No.:
MFR.: ADS lighting Corp	SUR.:0.485*0.485	Shielding Angle:

DATA OF LAMP		PHOTOMETRIC DATA			
MODEIASD-LFC-LF-20D42-AC-NK		Imax (cd)	594.6	S/MH (C0/180)	1.32
NOMINAL POWER (W)	--	LOR (%)	100.0	S/MH (C90/270)	1.33
RATED VOLTAGE (V)	--	TOTAL FLUX (lm)	2356.8	<input type="checkbox"/> UP, DN (C0-180)	7.4, 42.5
NOMINAL FLUX (lm)	2356.83	CIE CLASS	SEMI-D.	<input type="checkbox"/> UP, DN (C180-360)	7.1, 42.9
LAMPS INSIDE	1	<input type="checkbox"/> up (%)	14.5	CIBSE SHR NOM	1.50
TEST VOLTAGE (V)	--	<input type="checkbox"/> down (%)	85.5	CIBSE SHR MAX	1.50



C Range: 0 - 360DEG
 C Interval: 22.5DEG
 Test Speed: HIGH
 Temperature: 25.3DEG
 Operators: admin
 Test Date: 2022-03-16

Range: 0 - 180DEG
 Interval: 1.0DEG
 Test System: EVERFINE GO-2000B_V1 SYSTEM V2.00.411
 Humidity: 65.0%
 Test Distance: 8.780m [K=1.0000]
 Remarks:

ZONAL FLUX DIAGRAM

ZONAL FLUX DIAGRAM:

mm	C0	C45	C90	C135	C180	C225	C270	C315	mm	□ zone	□ total	%lum,lamp
10	588.5	585.9	585.5	585.0	587.5	585.6	585.8	585.3	0- 10	56.22	56.22	2.39,2.39
20	565.6	563.3	563.1	561.5	565.8	564.3	565.8	566.5	10- 20	163.0	219.2	9.3,9.3
30	529.0	525.1	523.6	523.5	527.8	528.0	527.8	528.2	20- 30	252.5	471.7	20,20
40	472.5	469.3	467.2	467.2	473.9	473.1	473.8	473.4	30- 40	313.5	785.2	33.3,33.3
50	402.1	398.5	395.8	395.6	401.0	403.9	402.9	403.0	40- 50	337.7	1123	47.6,47.6
60	317.1	313.1	311.5	311.0	312.0	314.2	314.0	314.1	50- 60	320.3	1443	61.2,61.2
70	226.2	223.0	220.8	219.6	221.9	223.0	224.4	224.6	60- 70	265.1	1708	72.5,72.5
80	140.7	140.5	137.4	136.4	139.9	140.9	140.3	140.7	70- 80	189.4	1898	80.5,80.5
90	79.13	79.12	77.35	75.43	76.72	78.11	78.42	77.02	80- 90	116.2	2014	85.5,85.5
100	61.37	61.87	60.60	58.41	58.96	58.04	58.50	57.30	90-100	71.53	2086	88.5,88.5
110	58.79	56.93	55.93	53.01	55.49	52.94	53.17	52.63	100-110	60.17	2146	91,91
120	56.51	57.49	55.44	54.11	52.40	53.68	51.73	53.33	110-120	53.53	2199	93.3,93.3
130	58.04	52.09	55.41	49.70	53.52	49.57	51.93	49.97	120-130	47.57	2247	95.3,95.3
140	58.26	49.64	52.36	47.33	53.22	46.00	51.21	47.01	130-140	39.42	2286	97,97
150	53.35	49.94	48.76	46.58	49.80	46.09	46.89	47.06	140-150	30.66	2317	98.3,98.3
160	51.56	48.27	45.78	45.75	47.21	45.05	44.30	46.30	150-160	21.90	2339	99.2,99.2
170	52.55	51.01	49.29	51.12	49.45	49.05	47.17	50.23	160-170	13.18	2352	99.8,99.8
180	55.56	51.76	56.01	51.88	55.69	51.87	56.09	51.88	170-180	4.883	2357	100,100
DEG	LUMINOUS INTENSITY:cd									UNIT:lm		

Conical surface Flux(90deg): 953.58 lm

%lum = 40.5%

%lamp = 40.5%

Conical surface Flux(120deg): 1443.2 lm

%lum = 61.2%

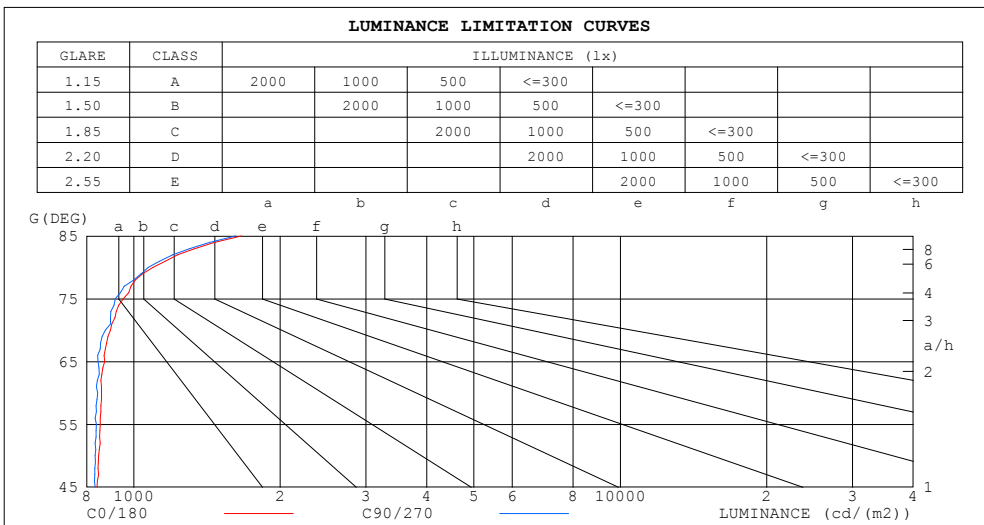
%lamp = 61.2%

C Range: 0 - 360DEG
 C Interval: 22.5DEG
 Test Speed: HIGH
 Temperature:25.3DEG
 Operators:admin
 Test Date:2022-03-16

□ Range: 0 - 180DEG
 □ Interval: 1.0DEG
 Test System:EVERFINE GO-2000B_V1 SYSTEM V2.00.411
 Humidity:65.0%
 Test Distance:8.780m [K=1.0000]
 Remarks:

LUMINANCE LIMITATION CURVES

Test:U:120.07V I:0.3849A P:41.783W PF:0.9032 Freq:0Hz Lamp Flux:2356.83x1 lm		
NAME: ADS lighting Corp	TYPE:	WEIGHT:
SPEC.:ASD-LFC-LF-20D42-AC-NK-3500K	DIM.:	SERIAL No.:
MFR.: ADS lighting Corp	SUR.:0.485*0.485	Shielding Angle:



LUMINANCE cd/(m2)		
G (DEG)	C0/180	C90/270
85	1663	1619
80	1096	1071
75	952	916
70	895	874
65	871	845
60	858	843
55	853	838
50	847	833
45	840	832

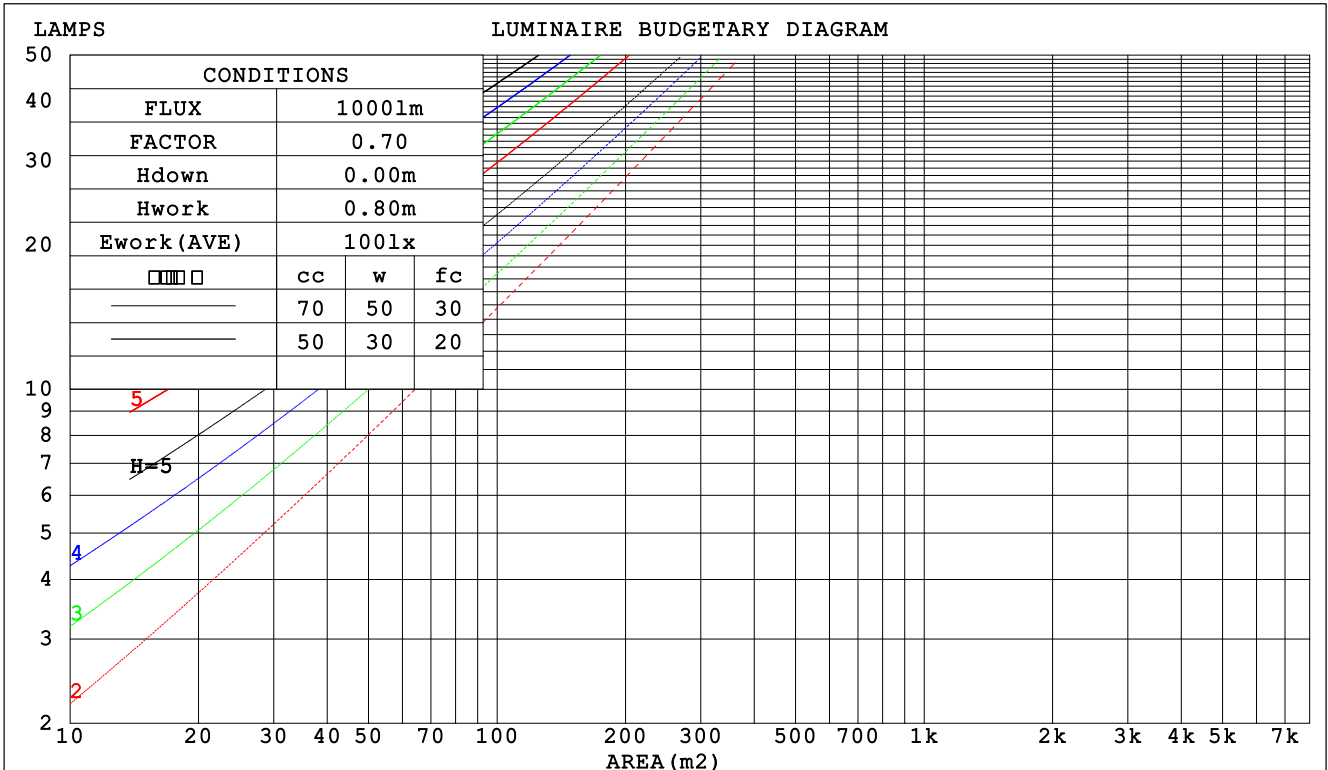
C Range: 0 - 360DEG
 C Interval: 22.5DEG
 Test Speed: HIGH
 Temperature:25.3DEG
 Operators:admin
 Test Date:2022-03-16

Range: 0 - 180DEG
 Interval: 1.0DEG
 Test System:EVERFINE GO-2000B_V1 SYSTEM V2.00.411
 Humidity:65.0%
 Test Distance:8.780m [K=1.0000]
 Remarks:

CU AND LUMINAIRE BUDGETARY ESTIMATE DIAGRAM

Test:U:120.07V I:0.3849A P:41.783W PF:0.9032 Freq:0Hz Lamp Flux:2356.83x1 lm		
NAME: ADS lighting Corp	TYPE:	WEIGHT:
SPEC.:ASD-LFC-LF-20D42-AC-NK-3500K	DIM.:	SERIAL No.:
MFR.: ADS lighting Corp	SUR.:0.485*0.485	Shielding Angle:

□cc	80%			70%			50%			30%			10%			0
□w	50%	30%	10%	50%	30%	10%	50%	30%	10%	50%	30%	10%	50%	30%	10%	0
□fc	20%			20%			20%			20%			20%			0
RCR	RCR:Room Cavity Ratio						Coefficients of Utilization(CU)									
0.0	1.16	1.16	1.16	1.11	1.11	1.11	1.03	1.03	1.03	.96	.96	.96	.89	.89	.89	.85
1.0	.98	.93	.89	.95	.90	.86	.88	.84	.81	.81	.78	.76	.75	.73	.71	.68
2.0	.85	.77	.71	.82	.75	.69	.76	.70	.65	.70	.66	.62	.65	.61	.58	.55
3.0	.74	.65	.58	.71	.63	.57	.66	.59	.54	.61	.56	.51	.57	.52	.49	.46
4.0	.65	.56	.49	.63	.54	.48	.58	.51	.46	.54	.48	.43	.50	.45	.41	.39
5.0	.58	.49	.42	.56	.47	.41	.52	.45	.39	.48	.42	.37	.45	.40	.36	.33
6.0	.52	.43	.36	.50	.42	.35	.47	.39	.34	.44	.37	.32	.41	.35	.31	.29
7.0	.47	.38	.32	.45	.37	.31	.42	.35	.30	.40	.33	.29	.37	.32	.27	.25
8.0	.43	.34	.28	.41	.33	.27	.39	.32	.26	.36	.30	.25	.34	.29	.24	.22
9.0	.39	.31	.25	.38	.30	.25	.36	.29	.24	.33	.27	.23	.31	.26	.22	.20
10.0	.36	.28	.23	.35	.27	.22	.33	.26	.21	.31	.25	.21	.29	.24	.20	.18



C Range: 0 - 360DEG
 C Interval: 22.5DEG
 Test Speed: HIGH
 Temperature:25.3DEG
 Operators:admin
 Test Date:2022-03-16

□ Range: 0 - 180DEG
 □ Interval: 1.0DEG
 Test System:EVERFINE GO-2000B_V1 SYSTEM V2.00.411
 Humidity:65.0%
 Test Distance:8.780m [K=1.0000]
 Remarks:

WEC AND CCEC

Test:U:120.07V I:0.3849A P:41.783W PF:0.9032 Freq:0Hz Lamp Flux:2356.83x1 lm		
NAME: ADS lighting Corp	TYPE:	WEIGHT:
SPEC.:ASD-LFC-LF-20D42-AC-NK-3500K	DIM.:	SERIAL No.:
MFR.: ADS lighting Corp	SUR.:0.485*0.485	Shielding Angle:

<input type="checkbox"/> cc	80%			70%			50%			30%			10%			0
<input type="checkbox"/> w	50%	30%	10%	50%	30%	10%	50%	30%	10%	50%	30%	10%	50%	30%	10%	0
<input type="checkbox"/> fc	20%			20%			20%			20%			20%			0
RCR	RCR:Room Cavity Ratio						Wall Exitance Coefficients (WEC)									
0.0																
1.0	.350	.199	.063	.338	.193	.061	.317	.182	.058	.297	.171	.055	.278	.161	.052	
2.0	.313	.172	.053	.303	.167	.051	.283	.157	.049	.265	.149	.047	.248	.141	.044	
3.0	.283	.151	.045	.274	.146	.044	.256	.139	.042	.240	.131	.040	.224	.124	.038	
4.0	.257	.134	.039	.249	.130	.039	.233	.124	.037	.218	.117	.035	.204	.111	.034	
5.0	.236	.120	.035	.228	.117	.034	.214	.111	.033	.200	.106	.031	.188	.100	.030	
6.0	.217	.109	.031	.210	.106	.031	.197	.101	.029	.185	.096	.028	.173	.091	.027	
7.0	.201	.099	.028	.195	.097	.028	.183	.092	.027	.172	.088	.026	.161	.084	.025	
8.0	.187	.091	.026	.181	.089	.025	.170	.085	.024	.160	.081	.023	.150	.077	.022	
9.0	.175	.085	.024	.169	.083	.023	.159	.079	.022	.150	.075	.022	.141	.072	.021	
10.0	.164	.079	.022	.159	.077	.021	.150	.073	.021	.141	.070	.020	.133	.067	.019	

<input type="checkbox"/> cc	80%			70%			50%			30%			10%			0
<input type="checkbox"/> w	50%	30%	10%	50%	30%	10%	50%	30%	10%	50%	30%	10%	50%	30%	10%	0
<input type="checkbox"/> fc	20%			20%			20%			20%			20%			0
RCR	RCR:Room Cavity Ratio						Ceiling Cavity Exitance Coefficients (CCEC)									
0.0																
1.0	.301	.301	.301	.258	.258	.258	.176	.176	.176	.101	.101	.101	.032	.032	.032	
2.0	.288	.244	.208	.246	.210	.180	.169	.145	.125	.097	.085	.073	.031	.027	.024	
3.0	.280	.227	.186	.240	.196	.161	.165	.136	.113	.095	.080	.067	.031	.026	.022	
4.0	.272	.215	.171	.234	.186	.148	.161	.129	.104	.093	.076	.062	.030	.025	.020	
5.0	.265	.205	.160	.228	.177	.140	.157	.124	.099	.091	.073	.058	.029	.024	.019	
6.0	.258	.197	.153	.222	.170	.133	.153	.119	.094	.089	.070	.056	.029	.023	.019	
7.0	.251	.190	.148	.216	.165	.129	.149	.116	.091	.087	.068	.054	.028	.022	.018	
8.0	.244	.184	.143	.210	.160	.125	.146	.112	.089	.085	.066	.053	.027	.022	.017	
9.0	.238	.180	.140	.205	.156	.122	.142	.110	.087	.083	.065	.052	.027	.021	.017	
10.0	.233	.176	.138	.200	.152	.120	.139	.107	.085	.081	.063	.051	.026	.021	.017	

C Range: 0 - 360DEG
 C Interval: 22.5DEG
 Test Speed: HIGH
 Temperature:25.3DEG
 Operators:admin
 Test Date:2022-03-16

Range: 0 - 180DEG
 Interval: 1.0DEG
 Test System:EVERFINE GO-2000B_V1 SYSTEM V2.00.411
 Humidity:65.0%
 Test Distance:8.780m [K=1.0000]
 Remarks:

UGR(Unified Glare Rating) Table

Test:U:120.07V I:0.3849A P:41.783W PF:0.9032 Freq:0Hz Lamp Flux:2356.83x1 lm										
NAME: ADS lighting Corp					TYPE:			WEIGHT:		
SPEC.:ASD-LFC-LF-20D42-AC-NK-3500K					DIM.:			SERIAL No.:		
MFR.: ADS lighting Corp					SUR.:0.485*0.485			Shielding Angle:		
ceiling/cavity	0.7	0.7	0.5	0.5	0.3	0.7	0.7	0.5	0.5	0.3
walls	0.5	0.3	0.5	0.3	0.3	0.5	0.3	0.5	0.3	0.3
working plane	0.2	0.2	0.2	0.2	0.2	0.2	0.2	0.2	0.2	0.2
Room dimensions	Viewed crosswise					Viewed endwise				
x = 2H y = 2H	11.5	12.8	11.9	13.3	13.8	11.4	12.8	11.8	13.2	13.7
3H	13.3	14.6	13.8	15.1	15.6	13.2	14.5	13.7	15.0	15.5
4H	14.2	15.4	14.7	15.9	16.5	14.1	15.3	14.6	15.8	16.4
6H	15.1	16.2	15.7	16.8	17.3	15.0	16.1	15.5	16.6	17.2
8H	15.6	16.7	16.1	17.2	17.8	15.4	16.5	16.0	17.1	17.7
12H	16.1	17.1	16.6	17.7	18.3	15.9	17.0	16.5	17.5	18.1
4H 2H	12.1	13.3	12.6	13.8	14.4	12.0	13.2	12.6	13.7	14.3
3H	14.2	15.2	14.7	15.8	16.4	14.1	15.1	14.6	15.7	16.3
4H	15.2	16.2	15.8	16.7	17.4	15.1	16.1	15.7	16.6	17.3
6H	16.3	17.1	16.9	17.7	18.4	16.2	17.0	16.8	17.6	18.3
8H	16.8	17.6	17.5	18.3	18.9	16.7	17.5	17.4	18.1	18.8
12H	17.5	18.2	18.1	18.8	19.5	17.3	18.1	18.0	18.7	19.4
8H 4H	15.6	16.4	16.2	17.0	17.7	15.5	16.3	16.1	16.9	17.6
6H	16.9	17.6	17.6	18.2	19.0	16.8	17.5	17.5	18.1	18.9
8H	17.6	18.2	18.3	18.9	19.7	17.6	18.1	18.2	18.8	19.6
12H	18.5	19.0	19.2	19.7	20.4	18.4	18.9	19.0	19.6	20.3
12H 4H	15.7	16.4	16.3	17.0	17.7	15.6	16.3	16.2	16.9	17.7
6H	17.1	17.7	17.7	18.3	19.1	17.0	17.6	17.7	18.2	19.0
8H	17.9	18.4	18.6	19.1	19.9	17.8	18.3	18.5	19.0	19.8
Variations with the observer position at spacings:										
S = 1.0H	+ 0.1 / - 0.1					+ 0.1 / - 0.2				
1.5H	+ 0.2 / - 0.3					+ 0.2 / - 0.3				
2.0H	+ 0.2 / - 0.3					+ 0.2 / - 0.3				

CIE Pub.117, 2357 lm Total Lamp Luminous Flux Corrected (8log(F/F0) = 3.0)
 Area: 0.7389 m2

C Range: 0 - 360DEG
 C Interval: 22.5DEG
 Test Speed: HIGH
 Temperature:25.3DEG
 Operators:admin
 Test Date:2022-03-16

Range: 0 - 180DEG
 Interval: 1.0DEG
 Test System:EVERFINE GO-2000B_V1 SYSTEM V2.00.411
 Humidity:65.0%
 Test Distance:8.780m [K=1.0000]
 Remarks:

UTILIZATION FACTORS TABLE

Test:U:120.07V I:0.3849A P:41.783W PF:0.9032 Freq:0Hz Lamp Flux:2356.83x1 lm		
NAME: ADS lighting Corp	TYPE:	WEIGHT:
SPEC.:ASD-LFC-LF-20D42-AC-NK-3500K	DIM.:	SERIAL No.:
MFR.: ADS lighting Corp	SUR.:0.485*0.485	Shielding Angle:

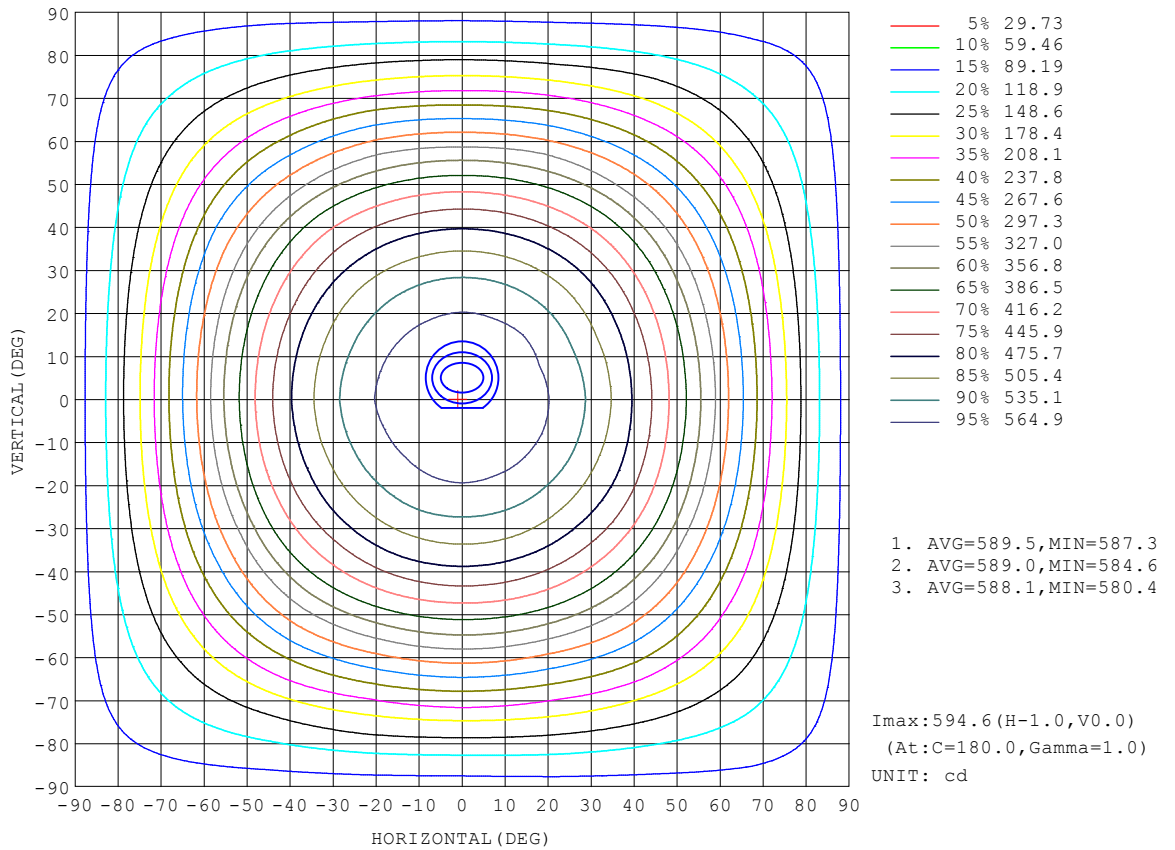
REFLECTANCE										
Ceiling	0.8	0.8	0.8	0.7	0.7	0.7	0.5	0.5	0.5	0
Walls	0.7	0.5	0.3	0.7	0.5	0.3	0.7	0.5	0.3	0
Working plane	0.2	0.2	0.2	0.2	0.2	0.2	0.2	0.2	0.2	0
ROOM INDEX	UTILIZATION FACTORS (PERCENT) $k(RI) \times RCR = 5$									
k = 0.60	51	39	31	49	38	31	48	37	31	24
0.80	60	48	40	59	47	40	56	46	39	31
1.00	68	56	48	66	55	47	63	55	46	38
1.25	75	63	55	73	62	55	69	60	53	44
1.50	80	69	61	78	67	60	73	64	58	48
2.00	87	77	70	85	75	68	79	72	66	55
2.50	92	83	75	89	80	74	83	76	70	59
3.00	95	87	80	92	84	78	86	80	75	62
4.00	100	93	87	96	90	85	89	84	80	67
5.00	103	96	91	99	93	89	92	87	84	70
ROOM INDEX	UF(total)									Direct
According to DIN EN 13032-2 2004			Suspended				SHRNOM = 1.25			

C Range: 0 - 360DEG
 C Interval: 22.5DEG
 Test Speed: HIGH
 Temperature:25.3DEG
 Operators:admin
 Test Date:2022-03-16

Range: 0 - 180DEG
 Interval: 1.0DEG
 Test System:EVERFINE GO-2000B_V1 SYSTEM V2.00.411
 Humidity:65.0%
 Test Distance:8.780m [K=1.0000]
 Remarks:

ISOCANDELA DIAGRAM

Test:U:120.07V I:0.3849A P:41.783W PF:0.9032 Freq:0Hz Lamp Flux:2356.83x1 lm		
NAME: ADS lighting Corp	TYPE:	WEIGHT:
SPEC.:ASD-LFC-LF-20D42-AC-NK-3500K	DIM.:	SERIAL No.:
MFR.: ADS lighting Corp	SUR.:0.485*0.485	Shielding Angle:

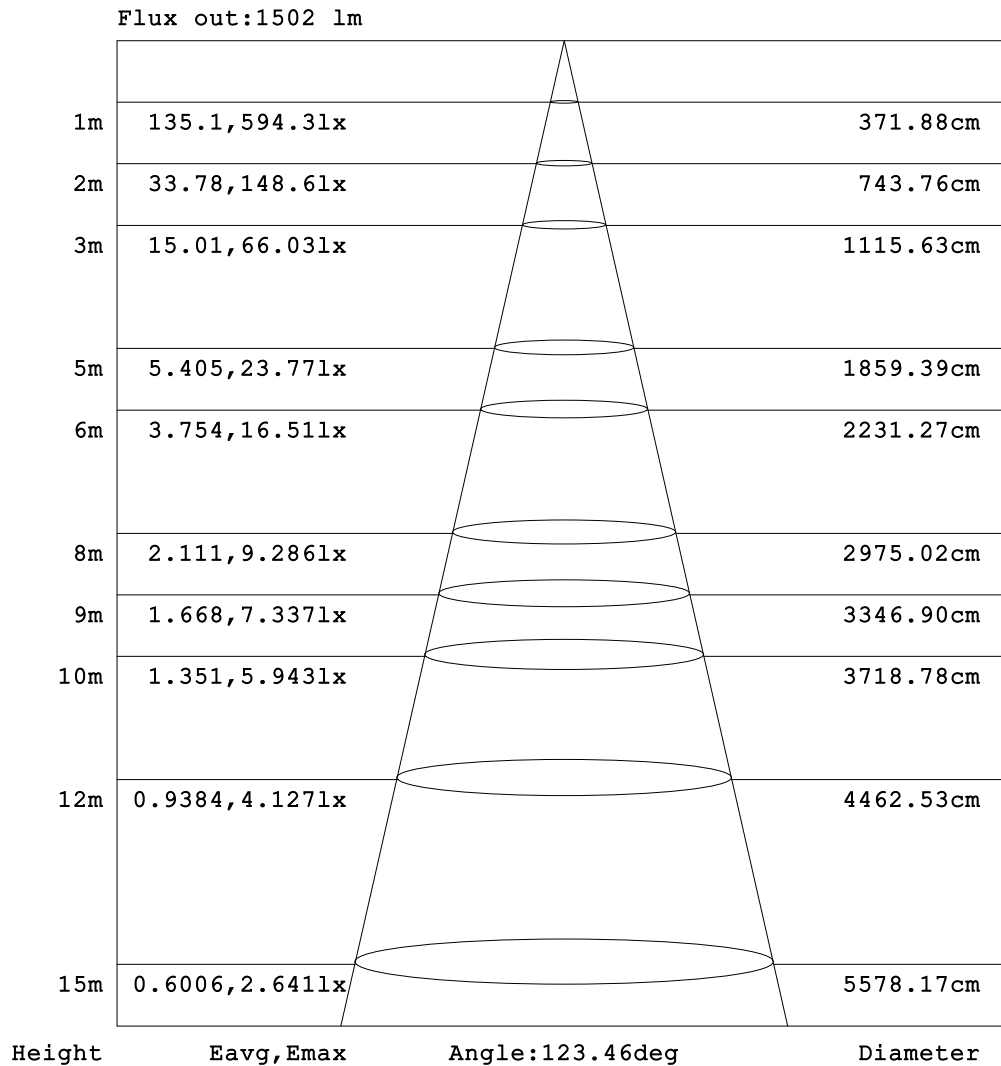


C Range: 0 - 360DEG
 C Interval: 22.5DEG
 Test Speed: HIGH
 Temperature:25.3DEG
 Operators:admin
 Test Date:2022-03-16

Range: 0 - 180DEG
 Interval: 1.0DEG
 Test System:EVERFINE GO-2000B_V1 SYSTEM V2.00.411
 Humidity:65.0%
 Test Distance:8.780m [K=1.0000]
 Remarks:

AAI Figure

Test:U:120.07V I:0.3849A P:41.783W PF:0.9032 Freq:0Hz Lamp Flux:2356.83x1 lm		
NAME: ADS lighting Corp	TYPE:	WEIGHT:
SPEC.:ASD-LFC-LF-20D42-AC-NK-3500K	DIM.:	SERIAL No.:
MFR.: ADS lighting Corp	SUR.:0.485*0.485	Shielding Angle:



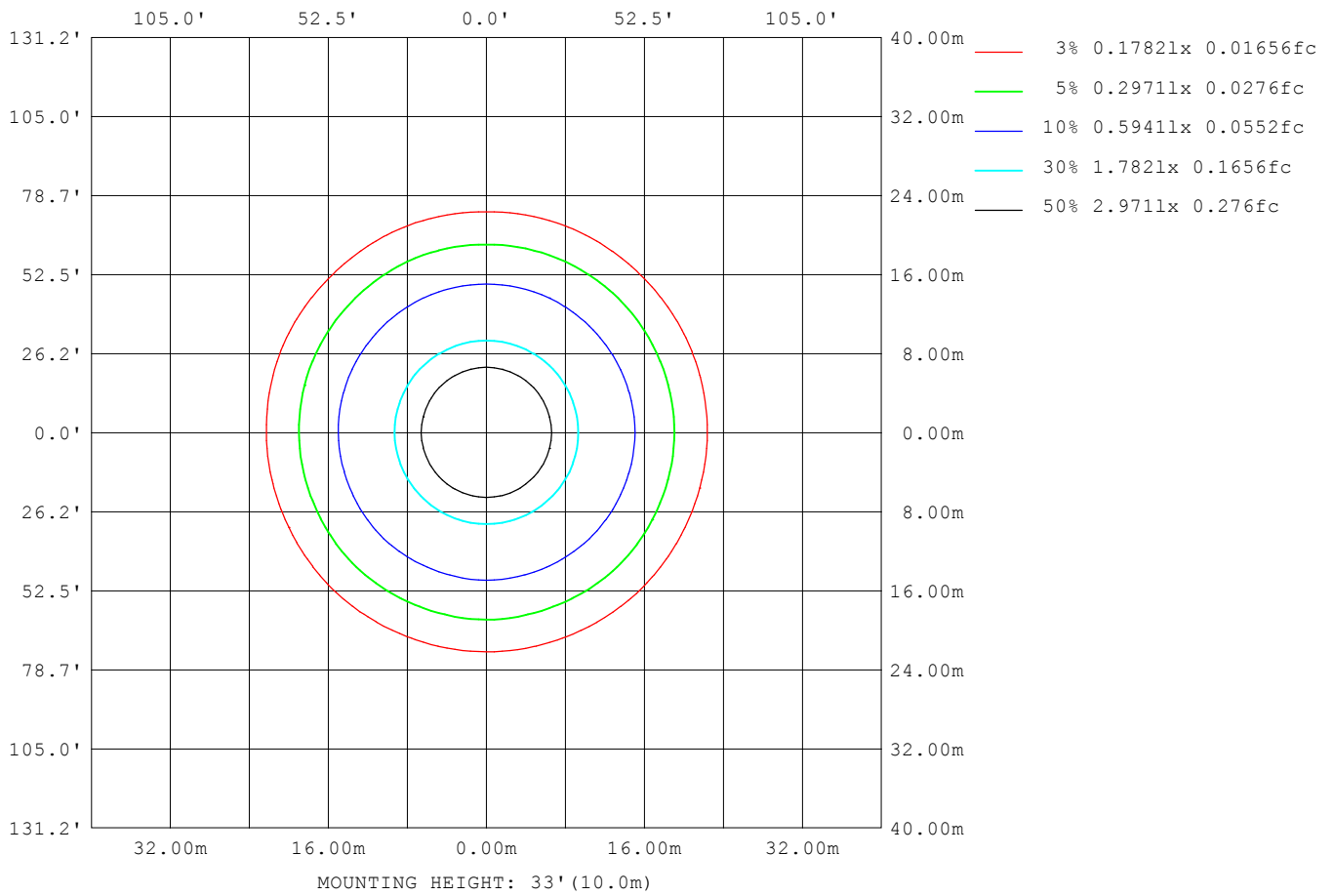
Note:The Curves indicate the illuminated area and the average illumination when the luminaire is at different distance.

C Range: 0 - 360DEG
 C Interval: 22.5DEG
 Test Speed: HIGH
 Temperature:25.3DEG
 Operators:admin
 Test Date:2022-03-16

Range: 0 - 180DEG
 Interval: 1.0DEG
 Test System:EVERFINE GO-2000B_V1 SYSTEM V2.00.411
 Humidity:65.0%
 Test Distance:8.780m [K=1.0000]
 Remarks:

ISOLUX DIAGRAM

Test:U:120.07V I:0.3849A P:41.783W PF:0.9032 Freq:0Hz Lamp Flux:2356.83x1 lm		
NAME: ADS lighting Corp	TYPE:	WEIGHT:
SPEC.:ASD-LFC-LF-20D42-AC-NK-3500K	DIM.:	SERIAL No.:
MFR.: ADS lighting Corp	SUR.:0.485*0.485	Shielding Angle:



C Range: 0 - 360DEG
 C Interval: 22.5DEG
 Test Speed: HIGH
 Temperature:25.3DEG
 Operators:admin
 Test Date:2022-03-16

Range: 0 - 180DEG
 Interval: 1.0DEG
 Test System:EVERFINE GO-2000B_V1 SYSTEM V2.00.411
 Humidity:65.0%
 Test Distance:8.780m [K=1.0000]
 Remarks:

LED Avg.L Report

Test:U:120.07V I:0.3849A P:41.783W PF:0.9032 Freq:0Hz Lamp Flux:2356.83x1 lm		
NAME: ADS lighting Corp	TYPE:	WEIGHT:
SPEC.:ASD-LFC-LF-20D42-AC-NK-3500K	DIM.:	SERIAL No.:
MFR.: ADS lighting Corp	SUR.:0.485*0.485	Shielding Angle:

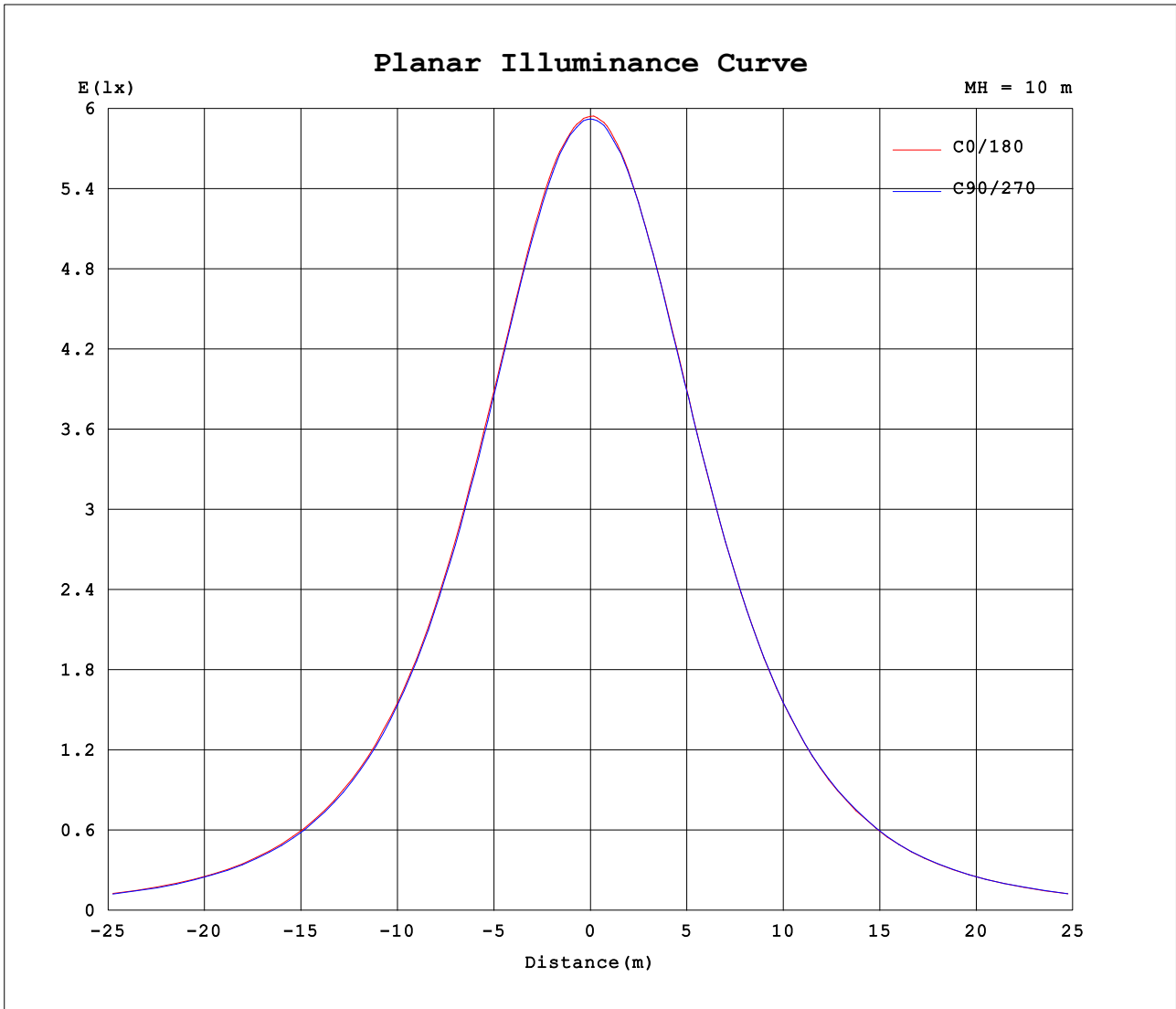
AvgL	cd/m2
L_0~180 (65) av	864
L_0~180 (75) av	940
L_0~180 (85) av	1648
L_90~270 (65) av	854
L_90~270 (75) av	928
L_90~270 (85) av	1645
L_45 (65) av	857
L_45 (75) av	930
L_45 (85) av	1640

Standard: GB/T 29293-2012

C Range: 0 - 360DEG
 C Interval: 22.5DEG
 Test Speed: HIGH
 Temperature:25.3DEG
 Operators:admin
 Test Date:2022-03-16

Range: 0 - 180DEG
 Interval: 1.0DEG
 Test System:EVERFINE GO-2000B_V1 SYSTEM V2.00.411
 Humidity:65.0%
 Test Distance:8.780m [K=1.0000]
 Remarks:

Planar Illuminance Curve



C Range: 0 - 360DEG
 C Interval: 22.5DEG
 Test Speed: HIGH
 Temperature:25.3DEG
 Operators:admin
 Test Date:2022-03-16

Range: 0 - 180DEG
 Interval: 1.0DEG
 Test System:EVERFINE GO-2000B_V1 SYSTEM V2.00.411
 Humidity:65.0%
 Test Distance:8.780m [K=1.0000]
 Remarks:

LUMINOUS DISTRIBUTION INTENSITY DATA

Test:U:120.07V I:0.3849A P:41.783W PF:0.9032 Freq:0Hz Lamp Flux:2356.83x1 lm		
NAME: ADS lighting Corp	TYPE:	WEIGHT:
SPEC.:ASD-LFC-LF-20D42-AC-NK-3500K	DIM.:	SERIAL No.:
MFR.: ADS lighting Corp	SUR.:0.485*0.485	Shielding Angle:

Table--1

UNIT: cd

C (DEG) □ (DEG)	0	22.5	45	67.5	90	112.5	135	157.5	180	202.5	225	247.5	270	292.5	315	337.5			
0	594	594	593	593	592	591	591	591	594	594	593	593	592	591	591	591			
5	592	592	591	590	590	589	589	589	593	591	591	590	591	589	589	590			
10	589	586	586	587	585	585	585	584	587	587	586	585	586	586	585	585			
15	579	577	576	576	576	576	575	575	578	577	577	578	577	577	577	577			
20	566	565	563	562	563	563	561	562	566	565	564	564	566	565	567	564			
25	549	549	547	546	545	545	545	546	550	548	548	548	549	549	549	547			
30	529	527	525	524	524	523	524	524	528	527	528	527	528	529	528	529			
35	504	501	499	499	498	498	497	499	502	502	503	502	502	503	503	502			
40	472	473	469	469	467	468	467	470	474	474	473	473	474	474	473	472			
45	439	439	436	436	435	433	432	436	440	438	441	439	440	441	440	439			
50	402	400	399	397	396	397	396	399	401	402	404	402	403	403	403	401			
55	362	360	358	355	355	352	356	354	361	362	363	361	362	361	361	359			
60	317	312	313	308	312	307	311	309	312	315	314	318	314	317	314	315			
65	272	266	267	262	264	261	265	263	267	272	269	272	270	270	269	269			
70	226	221	223	220	221	218	220	220	222	225	223	225	224	227	225	227			
75	182	180	177	177	175	175	175	175	177	179	179	180	180	180	180	178			
80	141	142	140	140	137	138	136	138	140	138	141	140	140	141	141	140			
85	107	108	107	106	104	104	103	104	105	105	107	107	108	106	106	105			
90	79.1	79.9	79.1	78.9	77.3	76.6	75.4	75.8	76.7	76.8	78.1	77.9	78.4	77.1	77.0	76.6			
95	65.4	66.5	66.3	66.5	65.6	64.5	62.9	62.7	63.0	62.5	63.1	63.1	63.4	62.9	62.5	62.9			
100	61.4	62.5	61.9	61.7	60.6	59.5	58.4	58.7	59.0	57.9	58.0	58.1	58.5	57.9	57.3	58.7			
105	59.8	60.0	59.0	58.9	58.0	56.8	55.6	56.5	56.4	55.7	54.4	54.6	55.3	54.9	54.4	56.7			
110	58.8	57.8	56.9	57.0	55.9	55.0	53.0	54.2	55.5	53.5	52.9	52.7	53.2	52.8	52.6	55.2			
115	57.7	55.4	57.3	56.5	55.6	54.5	53.5	51.5	53.8	50.8	53.3	52.3	52.0	51.8	52.8	52.9			
120	56.5	54.4	57.5	56.3	55.4	54.2	54.1	50.9	52.4	49.6	53.7	52.4	51.7	51.7	53.3	51.4			
125	57.4	54.0	56.1	56.0	55.4	53.0	52.9	50.5	53.0	48.9	53.2	52.2	51.7	51.8	53.2	50.7			
130	58.0	53.9	52.1	55.1	55.4	52.1	49.7	50.4	53.5	48.6	49.6	51.8	51.9	51.4	50.0	50.1			
135	58.4	53.6	49.8	52.8	54.5	50.0	48.0	49.9	53.7	47.7	46.5	50.5	51.7	50.3	47.7	49.7			
140	58.3	52.4	49.6	49.2	52.4	47.3	47.3	49.0	53.2	47.0	46.0	47.2	51.2	47.7	47.0	48.0			
145	55.9	51.4	49.5	49.0	50.7	47.0	46.3	49.0	52.3	47.0	46.1	45.7	49.4	45.7	46.2	48.2			
150	53.3	51.2	49.9	48.8	48.8	46.9	46.6	47.9	49.8	46.1	46.1	46.3	46.9	45.7	47.1	48.0			
155	52.1	51.1	49.9	47.6	46.6	46.8	46.3	46.9	47.8	45.0	45.9	45.9	44.8	44.8	46.7	48.4			
160	51.6	51.6	48.3	44.8	45.8	46.7	45.8	45.5	47.2	44.3	45.0	45.5	44.3	44.1	46.3	48.5			
165	51.0	49.7	46.6	43.7	45.5	45.8	45.1	45.3	46.7	43.6	43.9	45.0	44.6	43.3	45.5	47.9			
170	52.5	52.5	51.0	46.8	49.3	51.0	51.1	48.5	49.5	46.7	49.0	48.8	47.2	47.0	50.2	51.2			
175	54.7	54.3	50.3	50.1	54.0	53.9	50.2	50.7	53.4	49.6	49.6	53.2	52.6	49.5	50.7	54.1			
180	55.6	52.6	51.8	53.0	56.0	52.4	51.9	52.9	55.7	52.5	51.9	52.9	56.1	52.5	51.9	52.8			

C Range: 0 - 360DEG
 C Interval: 22.5DEG
 Test Speed: HIGH
 Temperature:25.3DEG
 Operators:admin
 Test Date:2022-03-16

□ Range: 0 - 180DEG
 □ Interval: 1.0DEG
 Test System:EVERFINE GO-2000B_V1 SYSTEM V2.00.411
 Humidity:65.0%
 Test Distance:8.780m [K=1.0000]
 Remarks: