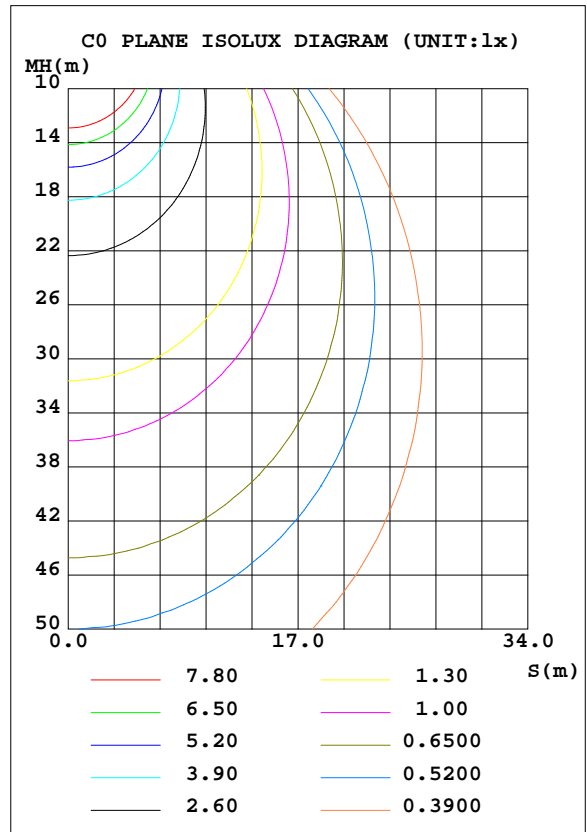
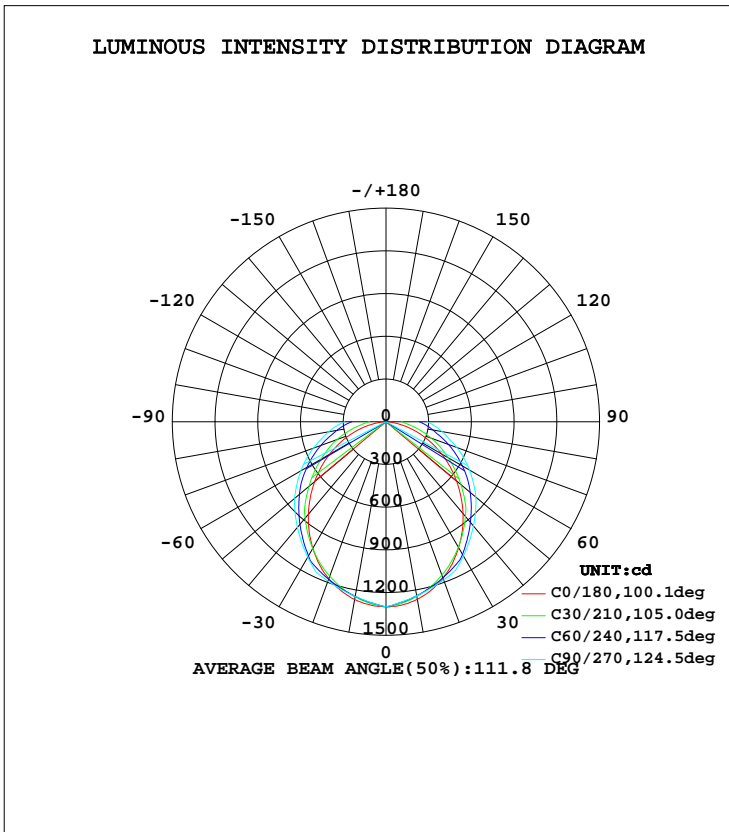


LUMINAIRE PHOTOMETRIC TEST REPORT

Test:U:120.3V I:0.2312A P:27.69W PF:0.9959 Lamp Flux:3890.08x1 lm		
NAME: MLSN2-28/D10/U/40	TYPE:LED	WEIGHT:
SPEC.:	DIM.:	SERIAL No.:1
MFR.: EVERFINE	SUR.:665*65.5	PROTECTION ANGLE:

DATA OF LAMP		PHOTOMETRIC DATA Eff: 140.50 lm/W			
MODEL	4000K	I _{max} (cd)	1300	S/MH(C0/180)	1.18
NOMINAL POWER(W)	28	LOR(%)	100.0	S/MH(C90/270)	1.26
RATED VOLTAGE(V)	120	TOTAL FLUX(lm)	3890.1	η UP, DN(C0-180)	0.0,49.6
NOMINAL FLUX(lm)	3890.08	CIE CLASS	DIRECT	η UP, DN(C180-360)	0.0,50.4
LAMPS INSIDE	1	η up(%)	0.0	CIBSE SHR NOM	1.25
TEST VOLTAGE(V)	120	η down(%)	100.0	CIBSE SHR MAX	1.35



C Range: 0 - 360DEG
C Interval: 5.0DEG
Test Speed: HIGH
Temperature:25.3DEG
Operators:
Test Date:2022-06-02

γ Range: 0 - 90DEG
γ Interval: 0.5DEG
Test System:EVERFINE GO-2000A_V1 SYSTEM V2.0.290
Humidity:65.0%
Test Distance:8.900m [K=1.0000]
Remarks:

ZONAL FLUX DIAGRAM

ZONAL FLUX DIAGRAM:

γ	C0	C45	C90	C135	C180	C225	C270	C315	γ	Φ zone	Φ total	lum, lamp
5	1291	1275	1271	1275	1291	1277	1273	1277	0- 5	30.74	30.74	0.79,0.79
10	1265	1242	1241	1243	1268	1246	1246	1246	5- 10	90.26	121.0	3.11,3.11
15	1225	1201	1212	1204	1227	1209	1218	1207	10- 15	145.7	266.7	6.86,6.86
20	1170	1156	1183	1158	1174	1165	1191	1163	15- 20	195.8	462.5	11.9,11.9
25	1101	1103	1153	1107	1106	1115	1164	1113	20- 25	239.4	701.9	18,18
30	1020	1048	1087	1054	1027	1063	1099	1061	25- 30	274.7	976.6	25.1,25.1
35	934.6	982.3	1021	989.9	941.2	998.1	1033	996.1	30- 35	299.2	1276	32.8,32.8
40	841.5	897.0	955.5	904.9	847.6	913.6	968.1	912.4	35- 40	313.7	1589	40.9,40.9
45	745.0	809.3	889.6	821.0	752.0	830.4	902.8	828.0	40- 45	318.8	1908	49.1,49.1
50	647.4	726.2	823.7	739.2	654.6	747.8	837.6	746.1	45- 50	315.2	2223	57.2,57.2
55	548.8	644.2	750.2	660.9	557.0	668.9	763.9	667.8	50- 55	303.7	2527	65,65
60	450.3	565.1	676.7	584.4	458.2	591.4	690.3	589.9	55- 60	284.5	2812	72.3,72.3
65	354.6	483.0	603.2	502.0	362.1	508.9	616.7	508.0	60- 65	259.2	3071	78.9,78.9
70	261.1	406.1	529.7	424.5	268.7	429.6	543.1	430.0	65- 70	228.9	3300	84.8,84.8
75	171.9	332.2	456.2	350.4	179.3	354.2	469.5	355.5	70- 75	195.2	3495	89.8,89.8
80	91.61	266.2	400.2	283.0	97.78	285.0	409.8	287.6	75- 80	161.0	3656	94,94
85	27.83	219.3	344.2	233.9	32.17	232.5	350.1	235.2	80- 85	130.3	3786	97.3,97.3
90	0.6179	175.6	288.2	187.9	0.6735	183.1	290.4	185.5	85- 90	103.8	3890	100,100
95									90- 95			
100									95-100			
105									100-105			
110									105-110			
115									110-115			
120									115-120			
125									120-125			
130									125-130			
135									130-135			
140									135-140			
145									140-145			
150									145-150			
155									150-155			
160									155-160			
165									160-165			
170									165-170			
175									170-175			
180									175-180			
DEG	LUMINOUS INTENSITY:cd								UNIT:lm			

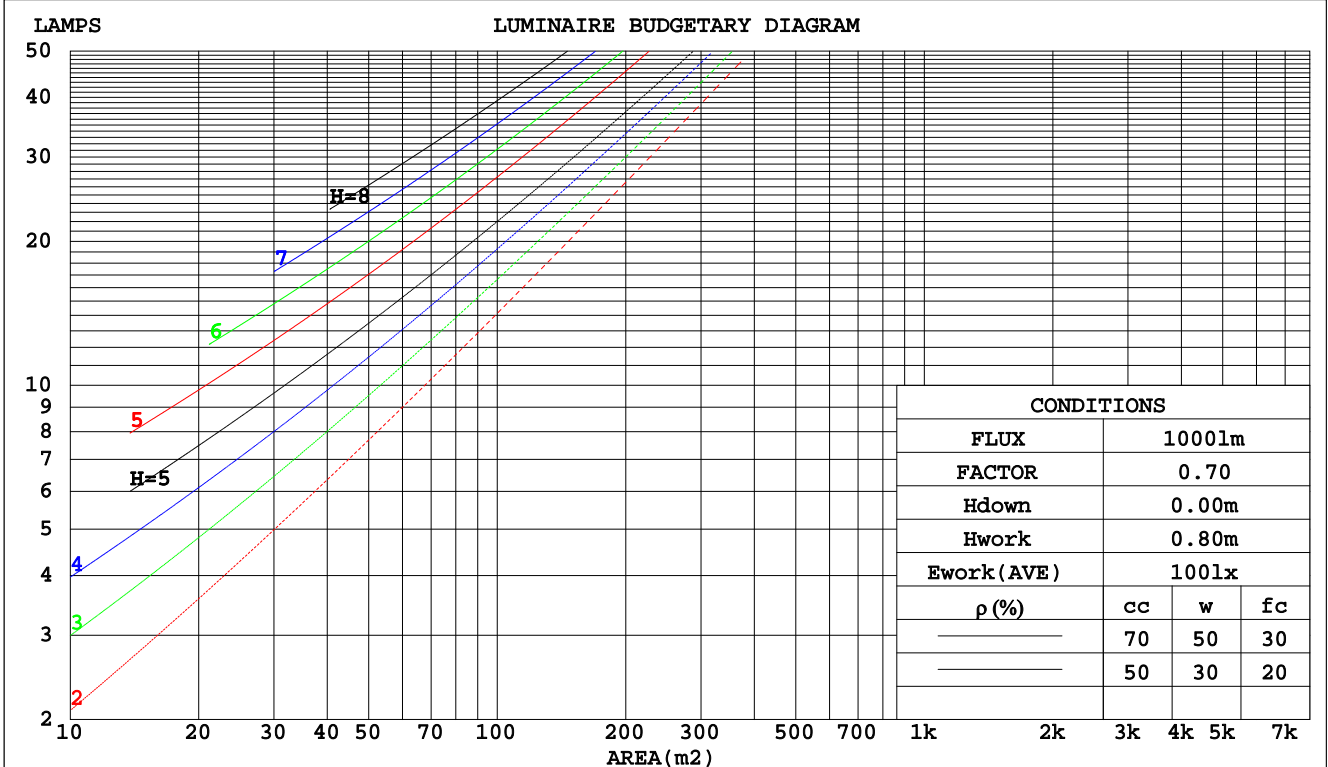
C Range: 0 - 360DEG
 C Interval: 5.0DEG
 Test Speed: HIGH
 Temperature:25.3DEG
 Operators:
 Test Date:2022-06-02

γ Range: 0 - 90DEG
 γ Interval: 0.5DEG
 Test System:EVERFINE GO-2000A_V1 SYSTEM V2.0.290
 Humidity:65.0%
 Test Distance:8.900m [K=1.0000]
 Remarks:

CU AND LUMINAIRE BUDGETARY ESTIMATE DIAGRAM

Test:U:120.3V I:0.2312A P:27.69W PF:0.9959 Lamp Flux:3890.08x1 lm		
NAME: MLSN2-28/D10/U/40	TYPE:LED	WEIGHT:
SPEC.:	DIM.:	SERIAL No.:1
MFR.: EVERFINE	SUR.:665*65.5	PROTECTION ANGLE:

pcc	80%			70%			50%			30%			10%			0
	50%	30%	10%	50%	30%	10%	50%	30%	10%	50%	30%	10%	50%	30%	10%	0
pw																
pfc	20%			20%			20%			20%			20%			0
RCR	RCR:Room Cavity Ratio						Coefficients of Utilization(CU)									
0.0	1.19	1.19	1.19	1.16	1.16	1.16	1.11	1.11	1.11	1.06	1.06	1.06	1.02	1.02	1.02	.00
1.0	1.01	.96	.91	.99	.94	.90	.94	.91	.87	.90	.87	.84	.87	.84	.82	.80
2.0	.87	.80	.73	.85	.78	.72	.82	.76	.71	.78	.73	.69	.75	.71	.67	.65
3.0	.76	.67	.60	.75	.66	.60	.71	.64	.59	.69	.63	.58	.66	.61	.57	.54
4.0	.67	.58	.51	.66	.57	.50	.63	.56	.50	.61	.54	.49	.59	.53	.48	.46
5.0	.60	.51	.44	.59	.50	.43	.57	.49	.43	.55	.48	.42	.53	.47	.42	.40
6.0	.54	.45	.38	.53	.44	.38	.51	.43	.37	.49	.42	.37	.48	.42	.37	.35
7.0	.49	.40	.33	.48	.39	.33	.47	.39	.33	.45	.38	.33	.44	.37	.33	.31
8.0	.45	.36	.30	.44	.36	.30	.43	.35	.30	.41	.34	.29	.40	.34	.29	.27
9.0	.41	.33	.27	.40	.32	.27	.39	.32	.27	.38	.31	.26	.37	.31	.26	.24
10.0	.38	.30	.24	.37	.30	.24	.36	.29	.24	.35	.29	.24	.34	.28	.24	.22



C Range: 0 - 360DEG
 C Interval: 5.0DEG
 Test Speed: HIGH
 Temperature:25.3DEG
 Operators:
 Test Date:2022-06-02

γ Range: 0 - 90DEG
 γ Interval: 0.5DEG
 Test System:EVERFINE GO-2000A_V1 SYSTEM V2.0.290
 Humidity:65.0%
 Test Distance:8.900m [K=1.0000]
 Remarks:

WEC AND CCEC

Test:U:120.3V I:0.2312A P:27.69W PF:0.9959 Lamp Flux:3890.08x1 lm		
NAME: MLSN2-28/D10/U/40	TYPE:LED	WEIGHT:
SPEC.:	DIM.:	SERIAL No.:1
MFR.: EVERFINE	SUR.:665*65.5	PROTECTION ANGLE:

ρcc	80%			70%			50%			30%			10%			0
ρw	50%	30%	10%	50%	30%	10%	50%	30%	10%	50%	30%	10%	50%	30%	10%	0
ρfc	20%			20%			20%			20%			20%			0
RCR	RCR:Room Cavity Ratio						Wall Exitance Coefficients(WEC)									
0.0																
1.0	.364	.207	.065	.356	.203	.065	.343	.197	.063	.330	.191	.061	.319	.185	.060	
2.0	.323	.177	.054	.316	.174	.054	.304	.169	.053	.293	.164	.051	.283	.160	.050	
3.0	.290	.155	.046	.285	.152	.046	.274	.149	.045	.264	.145	.044	.255	.141	.044	
4.0	.263	.137	.040	.258	.135	.040	.249	.132	.039	.240	.129	.039	.232	.126	.038	
5.0	.241	.123	.036	.236	.121	.035	.228	.119	.035	.220	.116	.035	.213	.114	.034	
6.0	.222	.111	.032	.218	.110	.032	.210	.108	.031	.203	.106	.031	.197	.104	.031	
7.0	.205	.101	.029	.202	.100	.029	.195	.099	.028	.189	.097	.028	.183	.095	.028	
8.0	.191	.093	.026	.188	.092	.026	.182	.091	.026	.176	.089	.026	.171	.088	.026	
9.0	.178	.086	.024	.175	.085	.024	.170	.084	.024	.165	.083	.024	.160	.081	.024	
10.0	.167	.080	.022	.164	.079	.022	.160	.078	.022	.155	.077	.022	.151	.076	.022	

ρcc	80%			70%			50%			30%			10%			0
ρw	50%	30%	10%	50%	30%	10%	50%	30%	10%	50%	30%	10%	50%	30%	10%	0
ρfc	20%			20%			20%			20%			20%			0
RCR	RCR:Room Cavity Ratio						Ceiling Cavity Exitance Coefficients(CCEC)									
0.0	.190	.190	.190	.163	.163	.163	.111	.111	.111	.064	.064	.064	.020	.020	.020	
1.0	.184	.156	.130	.157	.134	.112	.108	.092	.077	.062	.053	.045	.020	.017	.015	
2.0	.176	.132	.094	.151	.113	.081	.104	.078	.057	.060	.046	.033	.019	.015	.011	
3.0	.168	.114	.071	.144	.099	.062	.099	.069	.043	.057	.040	.026	.018	.013	.008	
4.0	.160	.101	.056	.138	.088	.049	.095	.061	.034	.055	.036	.020	.018	.012	.007	
5.0	.152	.091	.046	.131	.079	.040	.090	.055	.028	.052	.032	.017	.017	.011	.005	
6.0	.145	.083	.038	.125	.072	.033	.086	.050	.023	.050	.029	.014	.016	.010	.005	
7.0	.138	.076	.032	.118	.066	.028	.082	.046	.020	.048	.027	.012	.015	.009	.004	
8.0	.131	.070	.028	.113	.061	.024	.078	.043	.017	.045	.025	.010	.015	.008	.003	
9.0	.125	.065	.025	.107	.056	.022	.074	.040	.015	.043	.023	.009	.014	.008	.003	
10.0	.119	.061	.022	.102	.053	.019	.071	.037	.014	.041	.022	.008	.013	.007	.003	

C Range: 0 - 360DEG
 C Interval: 5.0DEG
 Test Speed: HIGH
 Temperature:25.3DEG
 Operators:
 Test Date:2022-06-02

γ Range: 0 - 90DEG
 γ Interval: 0.5DEG
 Test System:EVERFINE GO-2000A_V1 SYSTEM V2.0.290
 Humidity:65.0%
 Test Distance:8.900m [K=1.0000]
 Remarks:

UGR(Unified Glare Rating) Table

Test:U:120.3V I:0.2312A P:27.69W PF:0.9959 Lamp Flux:3890.08x1 lm										
NAME: MLSN2-28/D10/U/40					TYPE:LED			WEIGHT:		
SPEC.:					DIM.:			SERIAL No.:1		
MFR.: EVERFINE					SUR.:665*65.5			PROTECTION ANGLE:		
ceiling/cavity	0.7	0.7	0.5	0.5	0.3	0.7	0.7	0.5	0.5	0.3
walls	0.5	0.3	0.5	0.3	0.3	0.5	0.3	0.5	0.3	0.3
working plane	0.2	0.2	0.2	0.2	0.2	0.2	0.2	0.2	0.2	0.2
Room dimensions	Viewed crosswise					Viewed endwise				
x = 2H y = 2H	23.1	24.6	23.3	24.9	25.1	24.8	26.4	25.1	26.6	26.8
3H	24.3	25.8	24.6	26.1	26.3	27.1	28.6	27.4	28.8	29.0
4H	24.8	26.2	25.1	26.5	26.7	28.3	29.7	28.6	29.9	30.2
6H	25.1	26.4	25.4	26.7	27.0	29.6	30.9	29.9	31.2	31.5
8H	25.1	26.4	25.5	26.7	27.0	30.3	31.6	30.7	31.9	32.2
12H	25.1	26.4	25.5	26.7	27.0	31.2	32.4	31.5	32.7	33.0
4H 2H	24.0	25.4	24.3	25.7	25.9	25.4	26.8	25.7	27.0	27.3
3H	25.5	26.8	25.9	27.1	27.4	27.9	29.1	28.2	29.4	29.7
4H	26.2	27.3	26.5	27.6	28.0	29.2	30.4	29.6	30.7	31.0
6H	26.6	27.6	27.0	28.0	28.3	30.8	31.8	31.2	32.2	32.5
8H	26.7	27.6	27.1	28.0	28.4	31.7	32.6	32.1	33.0	33.4
12H	26.7	27.6	27.1	28.0	28.4	32.6	33.5	33.1	33.9	34.3
8H 4H	27.0	27.9	27.4	28.3	28.7	29.5	30.5	29.9	30.9	31.3
6H	27.7	28.5	28.1	28.9	29.3	31.4	32.2	31.8	32.6	33.0
8H	27.9	28.7	28.4	29.1	29.6	32.4	33.2	32.9	33.6	34.1
12H	28.1	28.7	28.6	29.2	29.7	33.7	34.4	34.2	34.8	35.3
12H 4H	27.2	28.1	27.6	28.5	28.9	29.5	30.4	30.0	30.8	31.2
6H	28.1	28.9	28.6	29.3	29.7	31.4	32.2	31.9	32.6	33.1
8H	28.5	29.2	29.0	29.6	30.1	32.6	33.3	33.1	33.7	34.2
Variations with the observer position at spacings:										
S = 1.0H	+ 0.1 / - 0.2					+ 0.1 / - 0.1				
1.5H	+ 0.1 / - 0.2					+ 0.2 / - 0.3				
2.0H	+ 0.1 / - 0.2					+ 0.2 / - 0.3				

CIE Pub.117 Corrected 3890 lm Total Lamp Luminous Flux.(8log(F/F0) = 4.7)

C Range: 0 - 360DEG
 C Interval: 5.0DEG
 Test Speed: HIGH
 Temperature:25.3DEG
 Operators:
 Test Date:2022-06-02

γ Range: 0 - 90DEG
 γ Interval: 0.5DEG
 Test System:EVERFINE GO-2000A_V1 SYSTEM V2.0.290
 Humidity:65.0%
 Test Distance:8.900m [K=1.0000]
 Remarks:

UTILIZATION FACTORS TABLE

Test:U:120.3V I:0.2312A P:27.69W PF:0.9959 Lamp Flux:3890.08x1 lm		
NAME: MLSN2-28/D10/U/40	TYPE:LED	WEIGHT:
SPEC.:	DIM.:	SERIAL No.:1
MFR.: EVERFINE	SUR.:665*65.5	PROTECTION ANGLE:

REFLECTANCE										
Ceiling	0.8	0.8	0.8	0.7	0.7	0.7	0.5	0.5	0.5	0
Walls	0.7	0.5	0.3	0.7	0.5	0.3	0.7	0.5	0.3	0
Working plane	0.2	0.2	0.2	0.2	0.2	0.2	0.2	0.2	0.2	0
ROOM INDEX	UTILIZATION FACTORS(PERCENT) $k(RI) \times RCR = 5$									
k = 0.60	56	44	37	55	43	36	54	43	36	30
0.80	65	53	45	64	53	45	62	52	45	38
1.00	73	62	54	72	61	54	70	63	53	46
1.25	80	69	61	79	68	61	76	67	60	52
1.50	85	74	67	83	74	66	80	72	65	57
2.00	92	83	75	90	81	75	87	79	73	65
2.50	96	87	81	94	86	80	90	83	78	69
3.00	100	92	86	97	90	85	93	87	82	73
4.00	104	97	92	101	96	91	97	92	88	78
5.00	107	101	96	104	99	95	99	95	91	82
ROOM INDEX	UF(total)									Direct
According to DIN EN 13032-2 2004			Suspended				SHRNOM = 1.25			

C Range: 0 - 360DEG
 C Interval: 5.0DEG
 Test Speed: HIGH
 Temperature:25.3DEG
 Operators:
 Test Date:2022-06-02

γ Range: 0 - 90DEG
 γ Interval: 0.5DEG
 Test System:EVERFINE GO-2000A_V1 SYSTEM V2.0.290
 Humidity:65.0%
 Test Distance:8.900m [K=1.0000]
 Remarks:

ISOCANDELA DIAGRAM

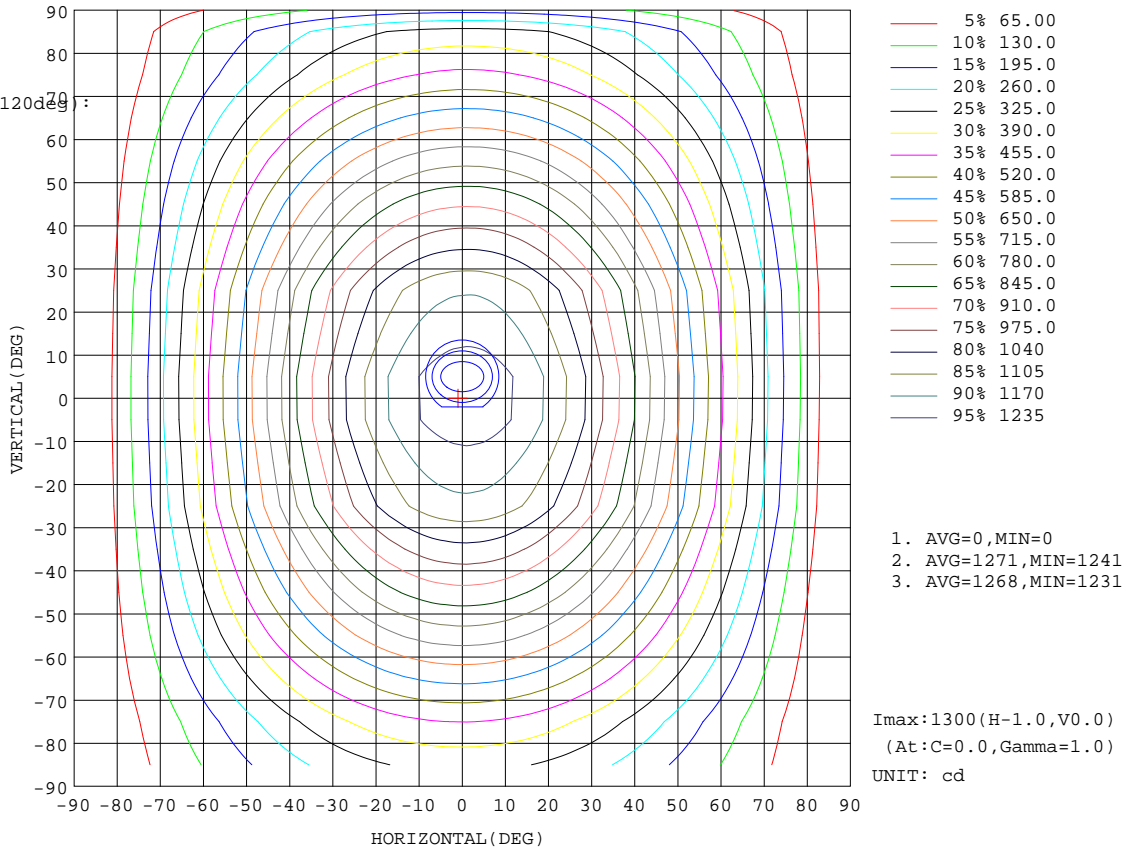
Test:U:120.3V I:0.2312A P:27.69W PF:0.9959 Lamp Flux:3890.08x1 lm		
NAME: MLSN2-28/D10/U/40	TYPE:LED	WEIGHT:
SPEC.:	DIM.:	SERIAL No.:1
MFR.: EVERFINE	SUR.:665*65.5	PROTECTION ANGLE:

Conical surface Flux(90deg):

1908.2 lm
%lum = 49.1%
%lamp = 49.1%

Conical surface Flux(120deg):

2811.6 lm
%lum = 72.3%
%lamp = 72.3%

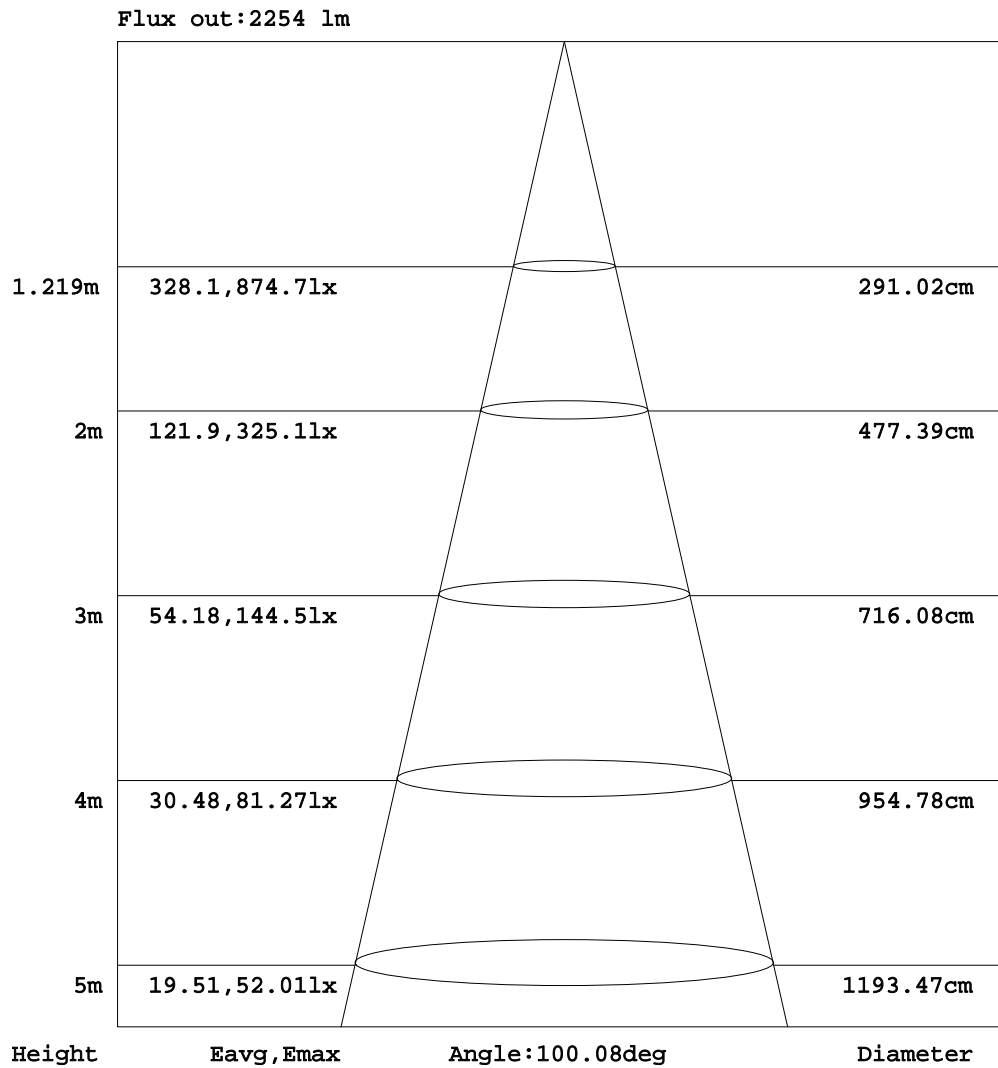


C Range: 0 - 360DEG
C Interval: 5.0DEG
Test Speed: HIGH
Temperature:25.3DEG
Operators:
Test Date:2022-06-02

γ Range: 0 - 90DEG
γ Interval: 0.5DEG
Test System:EVERFINE GO-2000A_V1 SYSTEM V2.0.290
Humidity:65.0%
Test Distance:8.900m [K=1.0000]
Remarks:

AAI Figure

Test:U:120.3V I:0.2312A P:27.69W PF:0.9959 Lamp Flux:3890.08x1 lm		
NAME: MLSN2-28/D10/U/40	TYPE:LED	WEIGHT:
SPEC.:	DIM.:	SERIAL No.:1
MFR.: EVERFINE	SUR.:665*65.5	PROTECTION ANGLE:



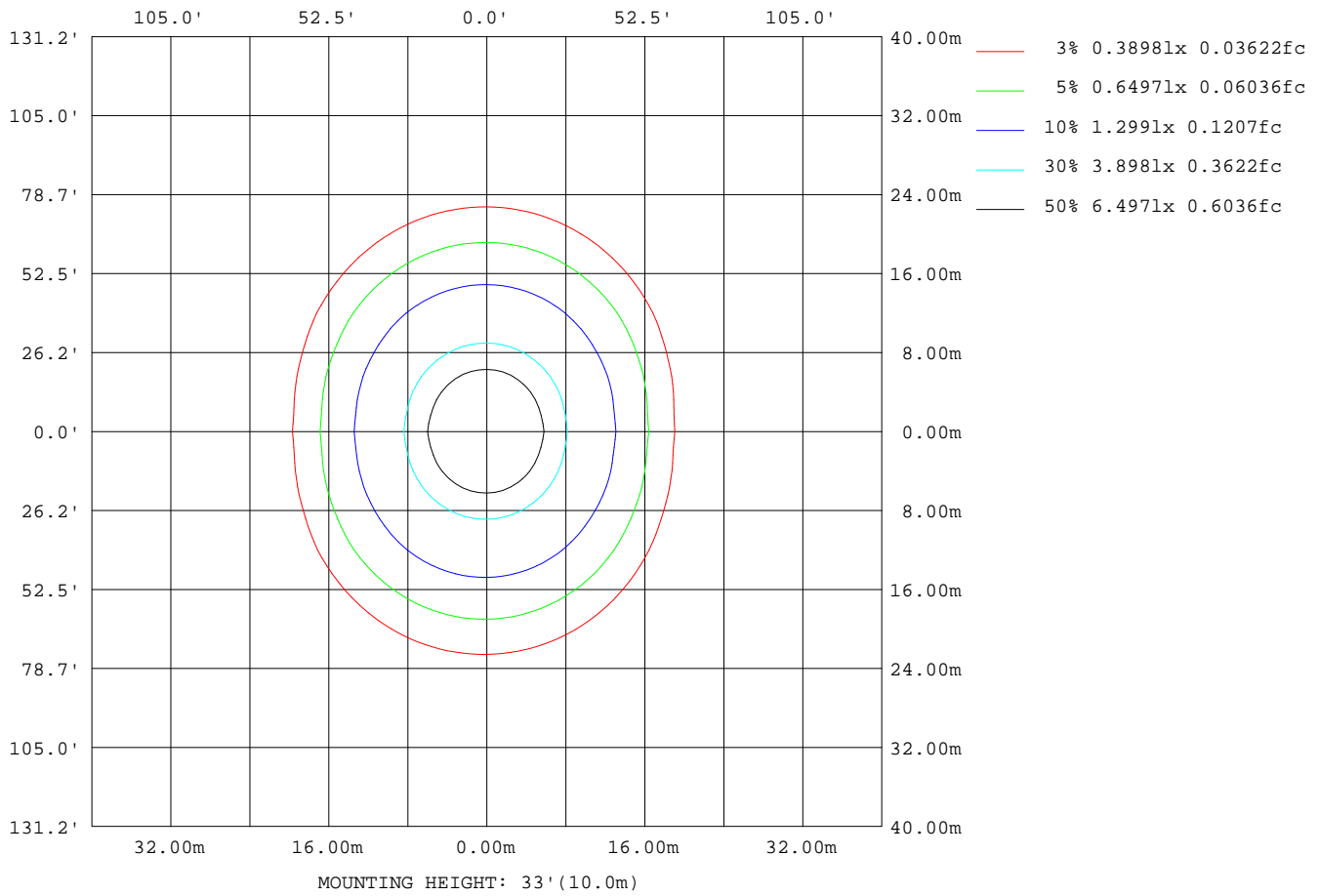
Note:The Curves indicate the illuminated area and the average illumination when the luminaire is at different distance.

C Range: 0 - 360DEG
 C Interval: 5.0DEG
 Test Speed: HIGH
 Temperature:25.3DEG
 Operators:
 Test Date:2022-06-02

γ Range: 0 - 90DEG
 γ Interval: 0.5DEG
 Test System:EVERFINE GO-2000A_V1 SYSTEM V2.0.290
 Humidity:65.0%
 Test Distance:8.900m [K=1.0000]
 Remarks:

ISOLUX DIAGRAM

Test:U:120.3V I:0.2312A P:27.69W PF:0.9959 Lamp Flux:3890.08x1 lm		
NAME: MLSN2-28/D10/U/40	TYPE:LED	WEIGHT:
SPEC.:	DIM.:	SERIAL No.:1
MFR.: EVERFINE	SUR.:665*65.5	PROTECTION ANGLE:



C Range: 0 - 360DEG
 C Interval: 5.0DEG
 Test Speed: HIGH
 Temperature:25.3DEG
 Operators:
 Test Date:2022-06-02

γ Range: 0 - 90DEG
 γ Interval: 0.5DEG
 Test System:EVERFINE GO-2000A_V1 SYSTEM V2.0.290
 Humidity:65.0%
 Test Distance:8.900m [K=1.0000]
 Remarks:

LED Avg.L Report

Test:U:120.3V I:0.2312A P:27.69W PF:0.9959 Lamp Flux:3890.08x1 lm		
NAME: MLSN2-28/D10/U/40	TYPE:LED	WEIGHT:
SPEC.:	DIM.:	SERIAL No.:1
MFR.: EVERFINE	SUR.:665*65.5	PROTECTION ANGLE:

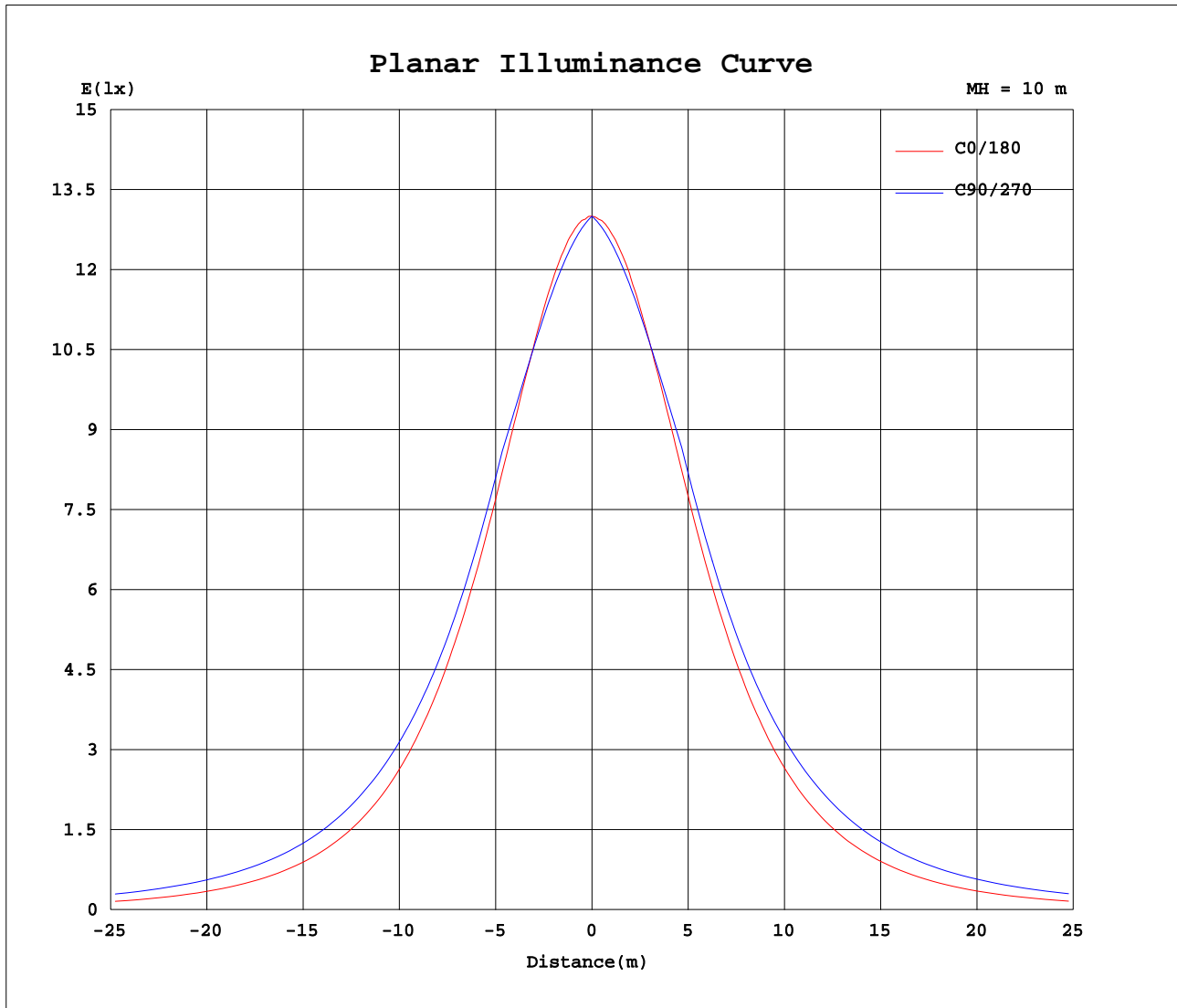
AvgL	cd/m2
L_0~180(65)av	19765
L_0~180(75)av	15812
L_0~180(85)av	8023
L_90~270(65)av	33640
L_90~270(75)av	41682
L_90~270(85)av	92842
L_45(65)av	27601
L_45(75)av	31346
L_45(85)av	61579

Standard: GB/T 29293-2012

C Range: 0 - 360DEG
 C Interval: 5.0DEG
 Test Speed: HIGH
 Temperature:25.3DEG
 Operators:
 Test Date:2022-06-02

γ Range: 0 - 90DEG
 γ Interval: 0.5DEG
 Test System:EVERFINE GO-2000A_V1 SYSTEM V2.0.290
 Humidity:65.0%
 Test Distance:8.900m [K=1.0000]
 Remarks:

Planar Illuminance Curve



C Range: 0 - 360DEG
 C Interval: 5.0DEG
 Test Speed: HIGH
 Temperature: 25.3DEG
 Operators:
 Test Date: 2022-06-02

γ Range: 0 - 90DEG
 γ Interval: 0.5DEG
 Test System: EVERFINE GO-2000A_V1 SYSTEM V2.0.290
 Humidity: 65.0%
 Test Distance: 8.900m [K=1.0000]
 Remarks:

LUMINOUS DISTRIBUTION INTENSITY DATA

Test:U:120.3V I:0.2312A P:27.69W PF:0.9959 Lamp Flux:3890.08x1 lm		
NAME: MLSN2-28/D10/U/40	TYPE:LED	WEIGHT:
SPEC.:	DIM.:	SERIAL No.:1
MFR.: EVERFINE	SUR.:665*65.5	PROTECTION ANGLE:

Table--1

UNIT: cd

C(DEG) γ (DEG)	0	5	10	15	20	25	30	35	40	45	50	55	60	65	70	75	80	85	90
0	1300	1300	1300	1300	1300	1300	1300	1300	1300	1300	1300	1300	1300	1300	1300	1300	1300	1300	1300
5	1291	1289	1287	1284	1282	1281	1279	1278	1277	1275	1274	1273	1272	1270	1270	1271	1271	1271	1271
10	1265	1261	1257	1253	1250	1248	1246	1243	1242	1242	1241	1241	1241	1241	1241	1240	1240	1241	1241
15	1225	1218	1213	1208	1205	1203	1201	1200	1201	1201	1202	1204	1205	1207	1208	1210	1210	1211	1212
20	1170	1161	1155	1150	1148	1146	1146	1149	1152	1156	1159	1163	1167	1172	1175	1178	1181	1181	1183
25	1101	1092	1085	1081	1080	1082	1085	1090	1097	1103	1112	1120	1126	1133	1141	1146	1150	1151	1153
30	1020	1010	1004	1003	1005	1010	1017	1026	1037	1048	1062	1071	1075	1076	1079	1082	1084	1086	1087
35	935	924	918	918	924	932	943	958	974	982	986	993	998	1004	1009	1014	1018	1020	1021
40	842	831	828	830	838	852	868	884	889	897	905	913	923	931	938	945	950	953	955
45	745	735	734	740	753	770	783	790	799	809	823	835	847	858	868	877	882	887	890
50	647	638	639	648	666	680	688	698	711	726	741	757	773	786	798	808	816	821	824
55	549	541	545	558	576	582	593	609	626	644	663	682	698	712	724	734	742	747	750
60	450	444	451	470	477	488	504	523	545	565	584	601	619	635	648	659	668	673	677
65	355	349	360	373	383	398	420	441	463	483	504	524	543	559	574	585	594	600	603
70	261	258	273	279	296	317	339	361	383	406	427	448	467	484	499	512	521	526	530
75	172	171	181	195	216	239	262	286	309	332	355	375	394	411	426	438	447	453	456
80	91.6	94.5	103	123	146	169	194	217	240	266	291	313	334	353	369	382	391	397	400
85	27.8	29.5	45.9	66.4	88.9	116	143	169	195	219	242	264	284	301	315	327	336	342	344
90	0.62	5.50	19.6	38.8	60.5	83.7	107	130	153	176	197	216	234	249	262	273	281	286	288

C Range: 0 - 360DEG
 C Interval: 5.0DEG
 Test Speed: HIGH
 Temperature:25.3DEG
 Operators:
 Test Date:2022-06-02

γ Range: 0 - 90DEG
 γ Interval: 0.5DEG
 Test System:EVERFINE GO-2000A_V1 SYSTEM V2.0.290
 Humidity:65.0%
 Test Distance:8.900m [K=1.0000]
 Remarks:

LUMINOUS DISTRIBUTION INTENSITY DATA

Test:U:120.3V I:0.2312A P:27.69W PF:0.9959 Lamp Flux:3890.08x1 lm		
NAME: MLSN2-28/D10/U/40	TYPE:LED	WEIGHT:
SPEC.:	DIM.:	SERIAL No.:1
MFR.: EVERFINE	SUR.:665*65.5	PROTECTION ANGLE:

Table--2

UNIT: cd

C(DEG) γ (DEG)	95	100	105	110	115	120	125	130	135	140	145	150	155	160	165	170	175	180	185
0	1300	1300	1300	1300	1300	1300	1300	1300	1300	1300	1300	1300	1300	1300	1300	1300	1300	1300	1300
5	1271	1271	1270	1270	1271	1272	1273	1274	1275	1276	1278	1279	1280	1282	1284	1286	1289	1291	1289
10	1241	1240	1241	1241	1241	1241	1241	1242	1243	1243	1245	1247	1249	1252	1255	1259	1263	1268	1264
15	1211	1211	1210	1209	1208	1207	1206	1205	1204	1203	1203	1203	1205	1207	1210	1215	1220	1227	1221
20	1181	1181	1178	1176	1173	1169	1166	1161	1158	1154	1151	1150	1150	1152	1155	1159	1166	1174	1166
25	1152	1150	1147	1142	1136	1130	1123	1114	1107	1101	1095	1091	1088	1087	1088	1091	1097	1106	1098
30	1087	1085	1085	1082	1081	1078	1074	1066	1054	1043	1033	1023	1016	1011	1009	1011	1017	1027	1018
35	1021	1020	1017	1013	1009	1003	998	994	990	981	965	950	938	930	926	926	931	941	932
40	955	953	949	943	937	930	922	913	905	897	890	875	860	847	838	834	838	848	839
45	888	887	882	876	866	856	846	833	821	809	800	793	779	761	747	742	743	752	744
50	822	821	814	807	796	784	770	755	739	724	709	699	691	674	657	648	646	655	648
55	749	747	740	733	724	711	696	679	661	641	624	607	594	586	568	553	549	557	551
60	675	673	666	657	646	633	618	601	584	564	542	521	503	489	479	461	453	458	454
65	602	599	593	583	571	557	540	521	502	483	464	441	418	398	385	370	358	362	360
70	529	525	519	509	496	481	464	445	424	403	382	360	339	314	295	282	266	269	268
75	456	452	446	436	423	408	390	371	350	328	306	283	260	238	214	195	180	179	182
80	400	395	388	378	364	347	328	307	283	258	236	213	190	166	143	121	104	97.8	105
85	344	340	333	323	310	295	276	256	234	210	185	160	133	106	83.4	61.7	41.9	32.2	40.0
90	288	284	278	269	257	243	227	208	188	167	143	120	96.5	72.8	50.0	28.9	11.2	0.67	7.83

C Range: 0 - 360DEG
 C Interval: 5.0DEG
 Test Speed: HIGH
 Temperature:25.3DEG
 Operators:
 Test Date:2022-06-02

γ Range: 0 - 90DEG
 γ Interval: 0.5DEG
 Test System:EVERFINE GO-2000A_V1 SYSTEM V2.0.290
 Humidity:65.0%
 Test Distance:8.900m [K=1.0000]
 Remarks:

LUMINOUS DISTRIBUTION INTENSITY DATA

Test:U:120.3V I:0.2312A P:27.69W PF:0.9959 Lamp Flux:3890.08x1 lm
NAME: MLSN2-28/D10/U/40 TYPE:LED WEIGHT:
SPEC.: DIM.: SERIAL No.:1
MFR.: EVERFINE SUR.:665*65.5 PROTECTION ANGLE:

Table--3

UNIT: cd

Table with 19 columns (C(190-280) and 19 rows (gamma(0-90)). Values range from 1300 down to 286.

C Range: 0 - 360DEG
C Interval: 5.0DEG
Test Speed: HIGH
Temperature:25.3DEG
Operators:
Test Date:2022-06-02

gamma Range: 0 - 90DEG
gamma Interval: 0.5DEG
Test System:EVERFINE GO-2000A_V1 SYSTEM V2.0.290
Humidity:65.0%
Test Distance:8.900m [K=1.0000]
Remarks:

LUMINOUS DISTRIBUTION INTENSITY DATA

Test:U:120.3V I:0.2312A P:27.69W PF:0.9959 Lamp Flux:3890.08x1 lm		
NAME: MLSN2-28/D10/U/40	TYPE:LED	WEIGHT:
SPEC.:	DIM.:	SERIAL No.:1
MFR.: EVERFINE	SUR.:665*65.5	PROTECTION ANGLE:

Table--4

UNIT: cd

C(DEG) γ (DEG)	285	290	295	300	305	310	315	320	325	330	335	340	345	350	355				
0	1300	1300	1300	1300	1300	1300	1300	1300	1300	1300	1300	1300	1300	1300	1300				
5	1273	1273	1273	1274	1275	1276	1277	1278	1279	1280	1282	1283	1285	1287	1289				
10	1246	1246	1245	1245	1245	1246	1246	1246	1247	1248	1250	1252	1255	1258	1261				
15	1217	1216	1214	1213	1211	1209	1207	1206	1206	1206	1206	1208	1210	1214	1219				
20	1188	1185	1182	1177	1172	1168	1163	1159	1155	1152	1151	1151	1153	1157	1162				
25	1158	1154	1147	1140	1131	1122	1113	1106	1099	1092	1088	1085	1084	1087	1093				
30	1097	1094	1092	1087	1084	1074	1061	1047	1036	1025	1017	1010	1007	1008	1012				
35	1029	1024	1019	1013	1007	1002	996	988	969	954	941	931	924	923	926				
40	961	955	947	939	930	920	912	904	898	881	864	847	837	833	834				
45	893	886	876	866	852	841	828	816	807	798	783	763	748	740	738				
50	826	817	806	793	778	762	746	731	716	704	696	678	658	645	642				
55	753	743	733	719	704	686	668	647	629	612	598	590	569	552	544				
60	678	668	655	641	625	608	590	569	547	525	507	492	482	459	448				
65	603	593	580	564	546	528	508	488	468	444	420	400	387	370	354				
70	529	518	505	489	471	451	430	408	386	363	341	315	296	284	263				
75	456	445	431	416	397	377	355	333	309	285	261	238	213	194	178				
80	395	384	370	352	333	311	288	263	239	215	190	165	141	117	102				
85	337	326	313	296	278	257	235	211	186	160	133	106	81.9	58.6	38.3				
90	279	269	256	242	225	206	186	164	141	118	93.6	69.9	47.1	26.3	9.21				

C Range: 0 - 360DEG
 C Interval: 5.0DEG
 Test Speed: HIGH
 Temperature:25.3DEG
 Operators:
 Test Date:2022-06-02

γ Range: 0 - 90DEG
 γ Interval: 0.5DEG
 Test System:EVERFINE GO-2000A_V1 SYSTEM V2.0.290
 Humidity:65.0%
 Test Distance:8.900m [K=1.0000]
 Remarks: