



LED RECESSED MINI PANEL

► **DESIGN** - LED RECESSED MINI PANEL with a classic, low-profile design is an ideal solution for low ceilings. This fixture has a J-box, plug & twist connector and spring-loaded clips, that makes the installation process quick and easy. The acrylic lens with a 110° beam angle and CRI90+ grants you even light. It is designed to operate on 120V circuits.

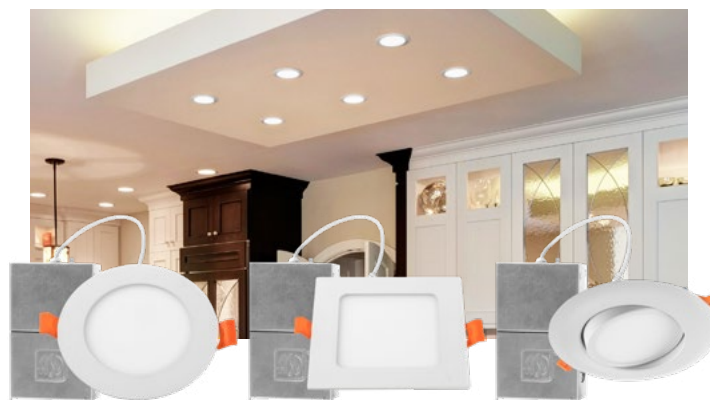
► **COLOR SELECTABLE** - You can choose either a 2,700K soft white, 3,000K warm white, 3,500K neutral white, 4,000K cool white, or 5,000K daylight color temperature.

► **DIMMING** - Smooth triac dimming capabilities ranging from 10% to 100% with modern LED dimmers allow you to control the look and feel of your space.

► **APPLICATION** - This fixture is IC rated so there is no can or any other housing required. It is also Wet Locations rated, making it perfect for kitchen, bathroom or any other common areas.

► **ADVANTAGES** - With a lifespan of 54,000 hours, these fixtures are made to last decades under normal operation! ASD provides a 5-year limited warranty along with UL and Energy Star certifications to guarantee top quality products and safety!

Catalog number	
Notes	
Type	



Finish:	White	Nickel
	Bronze	Black

Model	Size	Watts	Voltage	Dimmable	Lumens	CCT	Finish	Dimensions	Airtight
JBR ROUND									
ASD-JBR-3D6AC-WH	3 inch	6W	120 V	TRIAC	up to 460 lm	5CCT (2,700/3,000/3,500/4,000/5,000 K)	White	3-1/4" x 5/8"	-
ASD-JBR-3D6AC-WH-6PACK	3 inch	6W	120 V	TRIAC	up to 460 lm	5CCT (2,700/3,000/3,500/4,000/5,000 K)	White	3-1/4" x 5/8"	-
ASD-JBR-3D6AC-WH-12PACK	3 inch	6W	120 V	TRIAC	up to 460 lm	5CCT (2,700/3,000/3,500/4,000/5,000 K)	White	3-1/4" x 5/8"	-
ASD-JBR-3D6AC-NK	3 inch	6W	120 V	TRIAC	up to 460 lm	5CCT (2,700/3,000/3,500/4,000/5,000 K)	Nickel	3-1/4" x 5/8"	-
ASD-JBR-3D6AC-NK-6PACK	3 inch	6W	120 V	TRIAC	up to 460 lm	5CCT (2,700/3,000/3,500/4,000/5,000 K)	Nickel	3-1/4" x 5/8"	-
ASD-JBR-3D6AC-BR	3 inch	6W	120 V	TRIAC	up to 460 lm	5CCT (2,700/3,000/3,500/4,000/5,000 K)	Bronze	3-1/4" x 5/8"	-
ASD-JBR-3D6AC-BZ-6PACK	3 inch	6W	120 V	TRIAC	up to 460 lm	5CCT (2,700/3,000/3,500/4,000/5,000 K)	Bronze	3-1/4" x 5/8"	-
ASD-JBR-3D6AC-BK	3 inch	6W	120 V	TRIAC	up to 460 lm	5CCT (2,700/3,000/3,500/4,000/5,000 K)	Black	3-1/4" x 5/8"	-
ASD-JBR-3D6AC-BK-6PACK	3 inch	6W	120 V	TRIAC	up to 460 lm	5CCT (2,700/3,000/3,500/4,000/5,000 K)	Black	3-1/4" x 5/8"	-
ASD-JBR-3D6AC-BK-12PACK	3 inch	6W	120 V	TRIAC	up to 460 lm	5CCT (2,700/3,000/3,500/4,000/5,000 K)	Black	3-1/4" x 5/8"	-
ASD-JBR-4D12AC-WH-6PACK	4 inch	12W	120 V	TRIAC	up to 893 lm	5CCT (2,700/3,000/3,500/4,000/5,000 K)	White	4-11/16" x 5/8"	-
ASD-JBR-4D12AC-WH-12PACK	4 inch	12W	120 V	TRIAC	up to 893 lm	5CCT (2,700/3,000/3,500/4,000/5,000 K)	White	4-11/16" x 5/8"	-
ASD-JBR-4D12AC-NK-6PACK	4 inch	12W	120 V	TRIAC	up to 893 lm	5CCT (2,700/3,000/3,500/4,000/5,000 K)	Nickel	4-11/16" x 5/8"	-
ASD-JBR-4D12AC-BR	4 inch	12W	120 V	TRIAC	up to 893 lm	5CCT (2,700/3,000/3,500/4,000/5,000 K)	Bronze	4-11/16" x 5/8"	-
ASD-JBR-4D12AC-BZ-6PACK	4 inch	12W	120 V	TRIAC	up to 893 lm	5CCT (2,700/3,000/3,500/4,000/5,000 K)	Bronze	4-11/16" x 5/8"	-
ASD-JBR-4D12AC-BK-6PACK	4 inch	12W	120 V	TRIAC	up to 893 lm	5CCT (2,700/3,000/3,500/4,000/5,000 K)	Black	4-11/16" x 5/8"	-
ASD-JBR-4D12AC-BK-12PACK	4 inch	12W	120 V	TRIAC	up to 893 lm	5CCT (2,700/3,000/3,500/4,000/5,000 K)	Black	4-11/16" x 5/8"	-
ASD-JBR-6D15AC-WH	6 inch	15W	120 V	TRIAC	up to 1,225 lm	5CCT (2,700/3,000/3,500/4,000/5,000 K)	White	6-5/8" x 5/8"	-
ASD-JBR-6D15AC-WH-6PACK	6 inch	15W	120 V	TRIAC	up to 1,225 lm	5CCT (2,700/3,000/3,500/4,000/5,000 K)	White	6-5/8" x 5/8"	-
ASD-JBR-6D15AC-WH-12PACK	6 inch	15W	120 V	TRIAC	up to 1,225 lm	5CCT (2,700/3,000/3,500/4,000/5,000 K)	White	6-5/8" x 5/8"	-
ASD-JBR-6D15AC-NK-6PACK	6 inch	15W	120 V	TRIAC	up to 1,225 lm	5CCT (2,700/3,000/3,500/4,000/5,000 K)	Nickel	6-5/8" x 5/8"	-
ASD-JBR-6D15AC-BZ-6PACK	6 inch	15W	120 V	TRIAC	up to 1,225 lm	5CCT (2,700/3,000/3,500/4,000/5,000 K)	Bronze	6-5/8" x 5/8"	-
ASD-JBR-6D15AC-BK-6PACK	6 inch	15W	120 V	TRIAC	up to 1,225 lm	5CCT (2,700/3,000/3,500/4,000/5,000 K)	Black	6-5/8" x 5/8"	-
ASD-JBR-6D15AC-BK-12PACK	6 inch	15W	120 V	TRIAC	up to 1,225 lm	5CCT (2,700/3,000/3,500/4,000/5,000 K)	Black	6-5/8" x 5/8"	-
ASD-JBR-8D20AC-WH	8 inch	20W	120 V	TRIAC	up to 1,746 lm	5CCT (2,700/3,000/3,500/4,000/5,000 K)	White	8-11/16" x 5/8"	-
ASD-JBR-8D20AC-BK	8 inch	20W	120 V	TRIAC	up to 1,746 lm	5CCT (2,700/3,000/3,500/4,000/5,000 K)	Black	8-11/16" x 5/8"	-
ASD-JBR-12D24AC-WH	12 inch	24W	120 V	TRIAC	up to 2,169 lm	5CCT (2,700/3,000/3,500/4,000/5,000 K)	White	11-5/8" x 5/8"	-
ASD-JBR-12D24AC-BK	12 inch	24W	120 V	TRIAC	up to 2,169 lm	5CCT (2,700/3,000/3,500/4,000/5,000 K)	Black	11-5/8" x 5/8"	-
JBS SQUARE									
ASD-JBS-3D6AC-WH-6PACK	3 inch	6W	120 V	TRIAC	up to 456 lm	5CCT (2,700/3,000/3,500/4,000/5,000 K)	White	3-1/4" x 3-1/4" x 9/16"	-
ASD-JBS-3D6AC-NK-6PACK	3 inch	6W	120 V	TRIAC	up to 456 lm	5CCT (2,700/3,000/3,500/4,000/5,000 K)	Nickel	3-1/4" x 3-1/4" x 9/16"	-
ASD-JBS-3D6AC-BZ-6PACK	3 inch	6W	120 V	TRIAC	up to 456 lm	5CCT (2,700/3,000/3,500/4,000/5,000 K)	Bronze	3-1/4" x 3-1/4" x 9/16"	-
ASD-JBS-3D6AC-BK-6PACK	3 inch	6W	120 V	TRIAC	up to 456 lm	5CCT (2,700/3,000/3,500/4,000/5,000 K)	Black	3-1/4" x 3-1/4" x 9/16"	-

For most up-to-date spec sheets please refer to asd-lighting.com



LED RECESSED MINI PANEL

Model	Size	Watts	Voltage	Dimmable	Lumens	CCT	Finish	Dimensions	Airtight
ASD-JBS-4D12AC-WH-6PACK	4 inch	12W	120 V	TRIAC	up to 784 lm	5CCT (2,700/3,000/3,500/4,000/5,000 K)	White	4-5/8" x 4-5/8" x 9/16"	-
ASD-JBS-4D12AC-NK-6PACK	4 inch	12W	120 V	TRIAC	up to 784 lm	5CCT (2,700/3,000/3,500/4,000/5,000 K)	Nickel	4-5/8" x 4-5/8" x 9/16"	-
ASD-JBS-4D12AC-BZ-6PACK	4 inch	12W	120 V	TRIAC	up to 784 lm	5CCT (2,700/3,000/3,500/4,000/5,000 K)	Bronze	4-5/8" x 4-5/8" x 9/16"	-
ASD-JBS-4D12AC-BK-6PACK	4 inch	12W	120 V	TRIAC	up to 784 lm	5CCT (2,700/3,000/3,500/4,000/5,000 K)	Black	4-5/8" x 4-5/8" x 9/16"	-
ASD-JBS-6D15AC-WH-6PACK	6 inch	15W	120 V	TRIAC	up to 1,197 lm	5CCT (2,700/3,000/3,500/4,000/5,000 K)	White	6-9/16" x 6-9/16" x 9/16"	-
ASD-JBS-6D15AC-NK-6PACK	6 inch	15W	120 V	TRIAC	up to 1,197 lm	5CCT (2,700/3,000/3,500/4,000/5,000 K)	Nickel	6-9/16" x 6-9/16" x 9/16"	-
ASD-JBS-6D15AC-BZ-6PACK	6 inch	15W	120 V	TRIAC	up to 1,197 lm	5CCT (2,700/3,000/3,500/4,000/5,000 K)	Bronze	6-9/16" x 6-9/16" x 9/16"	-
ASD-JBS-6D15AC-BK-6PACK	6 inch	15W	120 V	TRIAC	up to 1,197 lm	5CCT (2,700/3,000/3,500/4,000/5,000 K)	Black	6-9/16" x 6-9/16" x 9/16"	-
ASD-JBS-8D20AC-WH	8 inch	20W	120 V	TRIAC	up to 1,743 lm	5CCT (2,700/3,000/3,500/4,000/5,000 K)	White	8-11/16" x 8-11/16" x 9/16"	-
ASD-JBS-8D20AC-BK	8 inch	20W	120 V	TRIAC	up to 1,743 lm	5CCT (2,700/3,000/3,500/4,000/5,000 K)	Black	8-11/16" x 8-11/16" x 9/16"	-
ASD-JBS-12D24AC-WH	12 inch	24W	120 V	TRIAC	up to 2,152 lm	5CCT (2,700/3,000/3,500/4,000/5,000 K)	White	11-9/16" x 11-9/16" x 9/16"	-
ASD-JBS-12D24AC-BK	12 inch	24W	120 V	TRIAC	up to 2,152 lm	5CCT (2,700/3,000/3,500/4,000/5,000 K)	Black	11-9/16" x 11-9/16" x 9/16"	-
JBR-GB ROUND GIMBAL									
ASD-JBR-GB-3D6AC-WH-6PACK	3 inch	6W	120 V	TRIAC	up to 463 lm	5CCT (2,700/3,000/3,500/4,000/5,000 K)	White	3-15/16" x 1"	-
ASD-JBR-GBA-3D6AC-WH-6PACK	3 inch	6W	120 V	TRIAC	up to 463 lm	5CCT (2,700/3,000/3,500/4,000/5,000 K)	White	3-15/16" x 1-1/2"	Yes
ASD-JBR-GBA-3D6AC-BK-6PACK	3 inch	6W	120 V	TRIAC	up to 463 lm	5CCT (2,700/3,000/3,500/4,000/5,000 K)	Black	3-15/16" x 1-1/2"	Yes
ASD-JBR-GB-4D12AC-WH-6PACK	4 inch	12W	120 V	TRIAC	up to 842 lm	5CCT (2,700/3,000/3,500/4,000/5,000 K)	White	5-1/8" x 1"	-
ASD-JBR-GBA-4D12AC-WH-6PACK	4 inch	12W	120 V	TRIAC	up to 842 lm	5CCT (2,700/3,000/3,500/4,000/5,000 K)	White	5-1/8" x 1-11/16"	Yes
ASD-JBR-GBA-4D12AC-BK-6PACK	4 inch	12W	120 V	TRIAC	up to 842 lm	5CCT (2,700/3,000/3,500/4,000/5,000 K)	Black	5-1/8" x 1-11/16"	Yes
ASD-JBR-GB-6D15AC-WH-6PACK	6 inch	15W	120 V	TRIAC	up to 1,232 lm	5CCT (2,700/3,000/3,500/4,000/5,000 K)	White	7-5/16" x 1-1/4"	-
ASD-JBR-GBA-6D15AC-WH-6PACK	6 inch	15W	120 V	TRIAC	up to 1,232 lm	5CCT (2,700/3,000/3,500/4,000/5,000 K)	White	7-5/16" x 1-7/8"	Yes
ASD-JBR-GBA-6D15AC-BK-6PACK	6 inch	15W	120 V	TRIAC	up to 1,232 lm	5CCT (2,700/3,000/3,500/4,000/5,000 K)	Black	7-5/16" x 1-7/8"	Yes

For detailed luminous flux information please refer to Annex, page 7.

PRODUCT SPECIFICATIONS:

Construction & Materials						
Housing	Aluminum					
Lens	PC					
Finish	White, Nickel, Bronze, Black					
Weight	ASD-JBR-3D6AC-WH	0.5 lbs (0.2 kg)	ASD-JBR-6D15AC-WH	0.8 lbs (0.4 kg)	ASD-JBS-4D12AC-BK-6PACK	3.7 lbs (1.7 kg)
	ASD-JBR-3D6AC-WH-6PACK	2.2 lbs (1 kg)	ASD-JBR-6D15AC-WH-6PACK	4.4 lbs (2 kg)	ASD-JBS-6D15AC-WH-6PACK	5 lbs (2.3 kg)
	ASD-JBR-3D6AC-WH-12PACK	4.8 lbs (2.2 kg)	ASD-JBR-6D15AC-WH-12PACK	9.3 lbs (4.2 kg)	ASD-JBS-6D15AC-NK-6PACK	
	ASD-JBR-3D6AC-NK	0.5 lbs (0.2 kg)	ASD-JBR-6D15AC-NK-6PACK	4.4 lbs (2 kg)	ASD-JBS-6D15AC-BZ-6PACK	
	ASD-JBR-3D6AC-NK-6PACK	2.2 lbs (1 kg)	ASD-JBR-6D15AC-BZ-6PACK		ASD-JBS-6D15AC-BK-6PACK	
	ASD-JBR-3D6AC-BR	0.5 lbs (0.2 kg)	ASD-JBR-6D15AC-BK-6PACK	9.2 lbs (4.2 kg)	ASD-JBS-8D20AC-WH	1.1 lbs (0.5 kg)
	ASD-JBR-3D6AC-BZ-6PACK	2.2 lbs (1 kg)	ASD-JBR-6D15AC-BK-12PACK		ASD-JBS-8D20AC-BK	
	ASD-JBR-3D6AC-BK	0.5 lbs (0.2 kg)	ASD-JBR-8D20AC-WH	1.1 lbs (0.5 kg)	ASD-JBS-12D24AC-WH	1.8 lbs (0.8 kg)
	ASD-JBR-3D6AC-BK-6PACK	2.2 lbs (1 kg)	ASD-JBR-8D20AC-BK		ASD-JBS-12D24AC-BK	
	ASD-JBR-3D6AC-BK-12PACK	4.8 lbs (2.2 kg)	ASD-JBR-12D24AC-WH	1.5 lbs (0.7 kg)	ASD-JBR-GB-3D6AC-WH-6PACK	3.9 lbs (1.8 kg)
	ASD-JBR-4D12AC-WH-6PACK	3.7 lbs (1.7 kg)	ASD-JBR-12D24AC-BK	2.6 lbs (1.2 kg)	ASD-JBR-GBA-3D6AC-WH-6PACK	4.5 lbs (2 kg)
	ASD-JBR-4D12AC-WH-12PACK	7.7 lbs (3.5 kg)	ASD-JBS-3D6AC-WH-6PACK		ASD-JBR-GBA-3D6AC-BK-6PACK	
	ASD-JBR-4D12AC-NK-6PACK	3.7 lbs (1.7 kg)	ASD-JBS-3D6AC-NK-6PACK		ASD-JBR-GB-4D12AC-WH-6PACK	4.2 lbs (1.9 kg)
	ASD-JBR-4D12AC-BR	0.7 lbs (0.3 kg)	ASD-JBS-3D6AC-BZ-6PACK	3.7 lbs (1.7 kg)	ASD-JBR-GBA-4D12AC-WH-6PACK	6.8 lbs (3.1 kg)
	ASD-JBR-4D12AC-BZ-6PACK	3.7 lbs (1.7 kg)	ASD-JBS-3D6AC-BK-6PACK		ASD-JBR-GBA-4D12AC-BK-6PACK	
	ASD-JBR-4D12AC-BK-6PACK		ASD-JBS-4D12AC-WH-6PACK		ASD-JBR-GB-6D15AC-WH-6PACK	7.7 lbs (3.5 kg)
ASD-JBR-4D12AC-BK-12PACK	7 lbs (3.2 kg)	ASD-JBS-4D12AC-NK-6PACK	3.7 lbs (1.7 kg)	ASD-JBR-GBA-6D15AC-WH-6PACK	10.1 lbs (4.6 kg)	
		ASD-JBS-4D12AC-BZ-6PACK		ASD-JBR-GBA-6D15AC-BK-6PACK		
Environmental system						
Work environment	Suitable for Wet Locations					
Operating temperature	-4°F to 104°F (-20°C to 40°C)					
L-70 Life	> 54,000 hrs					
Optical system						
Color temperature	5CCT switch (2,700/3,000/3,500/4,000/5,000 K), 3,000 K by default					
CRI	> 90					

For most up-to-date spec sheets please refer to asd-lighting.com

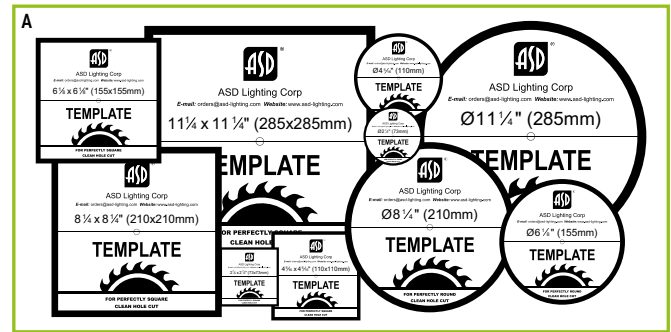


LED RECESSED MINI PANEL

Electrical system			
Input voltage	120 V		
Max input current	for 3 inch models: 0.07 A	for 6 inch models: 0.17 A	for 12 inch models: 0.27 A
	for 4 inch models: 0.14 A	for 8 inch models: 0.23 A	
Inrush current (Action time)	for 3 inch models: 16 A (0.16 S)	for 6 inch models: 29 A (0.18 S)	for 12 inch models: 41 A (0.18 S)
	for 4 inch models: 23 A (0.16 S)	for 8 inch models: 39 A (0.18 S)	
Off state power	0W		
Power consumption	for 3 inch models: 6W	for 6 inch models: 15W	for 12 inch models: 24W
	for 4 inch models: 12W	for 8 inch models: 20W	
Power factor	> 0.9		
Output voltage	36 V		
Max output current	for 3 inch models: 0.146 A	for 6 inch models: 0.366 A	for 12 inch models: 0.586 A
	for 4 inch models: 0.293 A	for 8 inch models: 0.488 A	
Surge protection DM/CM	2.5 kV / 2.5 kV		
Dimming range			
10-100%			
Dimming compatible controls			
Brand	Lutron		Leviton
Models	CTCL-153PDH-WH	S-600PR-WH	DB33K1
	DVW-603PGH-WH	CTCL-153P	1A2305
	MIR-600THW-WH	DV-600P	1F4205
	MACL-153M-WH	NT-1000	6633-P
	CT-603PGH-WH	S-603P	VP106
	DVCL-153P-WH	S-600P	IPL06
	SLV-600P-WH	4X603	6683
			6674
		6672	
Regular and voluntary certifications			
5-year limited warranty			
Energy Star listed			
UL certified E473854			
Title 24 JA8-2022 compliant (only for JBR models)			
FCC compliant			

PACKAGE CONTENTS:

Description	Q-ty
LED Recessed Mini Panel	1 (6 for 6 pack; 12 for 12 pack)
Template for 3, 4, 6, 8 or 12 inch (A)	1
Box	1

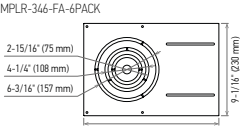
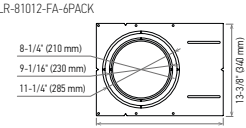
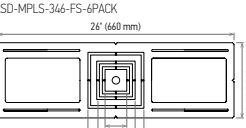
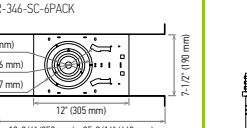
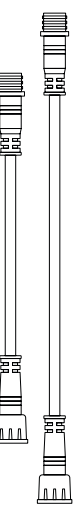
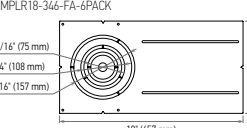
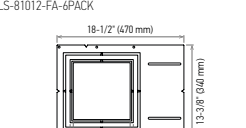
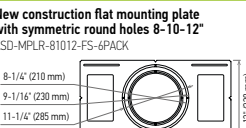
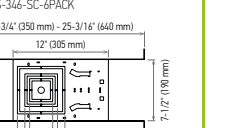
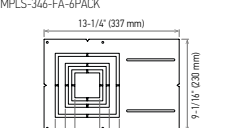

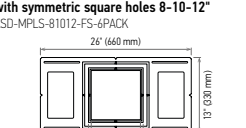



For most up-to-date spec sheets please refer to asd-lighting.com



LED RECESSED MINI PANEL

ACCESSORIES (sold separately):

<p>New construction flat mounting plate with asymmetric round holes 3-4-6" ASD-MPLR-346-FA-6PACK</p>  <p>2-15/16" (75 mm) 4-1/4" (108 mm) 6-3/16" (157 mm) 13-1/4" (337 mm) 9-1/16" (230 mm)</p>	<p>New construction flat mounting plate with asymmetric round holes 8-10-12" ASD-MPLR-81012-FA-6PACK</p>  <p>8-1/4" (210 mm) 9-1/16" (230 mm) 11-1/4" (285 mm) 18-1/2" (470 mm) 13-3/8" (340 mm)</p>	<p>New construction flat mounting plate with symmetric square holes 3-4-6" ASD-MPLS-346-FS-6PACK</p>  <p>26" (660 mm) 8-1/4" (210 mm) 2-15/16" (75 mm) 4-5/16" (110 mm) 6-1/8" (156 mm)</p>	<p>New construction mounting plate with round holes and sliding clips 3-4-6" ASD-MPLR-346-SC-6PACK</p>  <p>2-7/8" (73 mm) 4-3/16" (106 mm) 6-3/16" (157 mm) 12" (305 mm) 13-3/4" (350 mm) - 25-3/16" (640 mm) 7-1/2" (190 mm)</p>	<p>Extension cord 3PIN</p>  <p>10" ASD-EC-10A-6PACK</p> <p>20" ASD-EC-20A-6PACK</p>
<p>New construction flat mounting plate 18" with asymmetric round holes 3-4-6" ASD-MPLR18-346-FA-6PACK</p>  <p>2-15/16" (75 mm) 4-1/4" (108 mm) 6-3/16" (157 mm) 18" (457 mm) 9-1/16" (230 mm)</p>	<p>New construction flat mounting plate with asymmetric square holes 8-10-12" ASD-MPLS-81012-FA-6PACK</p>  <p>18-1/2" (470 mm) 13-3/8" (340 mm) 8-1/4" (210 mm) 9-1/16" (230 mm) 11-1/4" (285 mm)</p>	<p>New construction flat mounting plate with symmetric round holes 8-10-12" ASD-MPLR-81012-FS-6PACK</p>  <p>8-1/4" (210 mm) 9-1/16" (230 mm) 11-1/4" (285 mm) 26" (660 mm) 13" (330 mm)</p>	<p>New construction mounting plate with square holes and sliding clips 3-4-6" ASD-MPLS-346-SC-6PACK</p>  <p>13-3/4" (350 mm) - 25-3/16" (640 mm) 12" (305 mm) 7-1/2" (190 mm) 2-15/16" (75 mm) 4-5/16" (110 mm) 6-1/8" (156 mm)</p>	
<p>New construction flat mounting plate with asymmetric square holes 3-4-6" ASD-MPLS-346-FA-6PACK</p>  <p>13-1/4" (337 mm) 9-1/16" (230 mm) 2-15/16" (75 mm) 4-5/16" (110 mm) 6-1/8" (156 mm)</p>	<p>New construction flat mounting plate with symmetric round holes 3-4-6" ASD-MPLR-346-FS-6PACK</p>  <p>2-15/16" (75 mm) 4-1/4" (108 mm) 6-3/16" (157 mm) 8-1/4" (210 mm) 26" (660 mm)</p>	<p>New construction flat mounting plate with symmetric square holes 8-10-12" ASD-MPLS-81012-FS-6PACK</p>  <p>26" (660 mm) 8-1/4" (210 mm) 9-1/16" (230 mm) 11-1/4" (285 mm)</p>	<p>New construction mounting plate with square holes and sliding clips 8-10-12" ASD-MPLS-81012-SC-6PACK</p>  <p>8-1/4" (210 mm) 9-1/16" (230 mm) 11-1/4" (285 mm) 17-3/4" (450 mm) 13" (330 mm) 17-3/4" (450 mm) - 25-3/16" (640 mm)</p>	

ACCESSORY COMPATIBILITY LIST:

Models	Accessories	Accessories											
		New construction flat mounting plate with asymmetric round holes 3-4-6" ASD-MPLR-346-FA-6PACK	New construction flat mounting plate 18" with asymmetric round holes 3-4-6" ASD-MPLR18-346-FA-6PACK	New construction flat mounting plate with asymmetric square holes 3-4-6" ASD-MPLS-346-FA-6PACK	New construction flat mounting plate with asymmetric round holes 8-10-12" ASD-MPLR-81012-FA-6PACK	New construction flat mounting plate with asymmetric square holes 8-10-12" ASD-MPLS-81012-FA-6PACK	New construction flat mounting plate with symmetric round holes 3-4-6" ASD-MPLR-346-FS-6PACK	New construction flat mounting plate with symmetric square holes 3-4-6" ASD-MPLS-346-FS-6PACK	New construction flat mounting plate with symmetric round holes 8-10-12" ASD-MPLR-81012-FS-6PACK	New construction flat mounting plate with symmetric square holes 8-10-12" ASD-MPLS-81012-FS-6PACK	New construction mounting plate with round holes and sliding clips 3-4-6" ASD-MPLR-346-SC-6PACK	New construction mounting plate with square holes and sliding clips 3-4-6" ASD-MPLS-346-SC-6PACK	New construction mounting plate with round holes and sliding clips 8-10-12" ASD-MPLR-81012-SC-6PACK
ASD-JBR	3"	•	•					•					•
	4"	•	•					•					•
	6"	•	•					•					•
	8"				•								•
ASD-JBS	3"			•									•
	4"			•									•
	6"			•									•
	8"						•						•
ASD-JBR-GB/ ASD-JBR-GBA	3"	•	•					•					•
	4"	•	•					•					•
	6"	•	•					•					•
	8"	•	•					•					•

For most up-to-date spec sheets please refer to asd-lighting.com



LED RECESSED MINI PANEL

INSTALLATION GUIDE

IMPORTANT SAFETY INFORMATION:

Please read all the instructions below before installation.

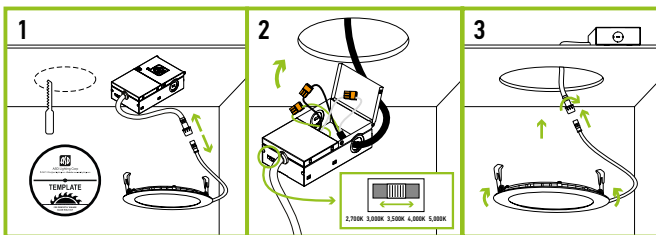
- ▶ Make sure that the supply voltage corresponds to the rated product voltage.
- ▶ The product must be installed by a qualified electrician in accordance with the National Electrical Code and corresponding local codes.
- ▶ If the product is damaged, do not use it.

⚠ WARNING

RISK OF PERSONAL INJURY – READ and follow all WARNINGS and installation instructions. Keep or give to the owner for future reference.
Risk of cuts: Wear gloves to prevent cuts or abrasions when removing from carton, handling, installing, and maintaining this product.
Risk of electric shock: This product must be installed in accordance with the applicable installation code by a person familiar with the construction and operation of the product and the hazards involved.
Risk of Fire: Minimum 194°F supply conductors. Consult a qualified electrician to ensure correct branch circuit conductor.
 ASD® assumes no responsibility for claims arising out of improper or careless Installation or handling of this product.

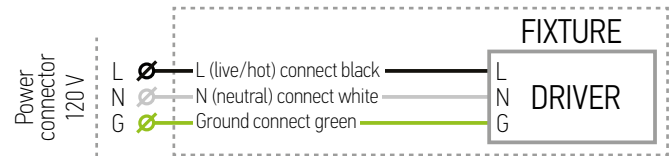
INSTALLATION STEPS:

1. Use template to cut an appropriate sized hole. Disconnect the fixture from the junction box.
2. Open junction box. Connect the wires: Black to Black, White to White, Green to Green. Secure the connection with quick connector. Choose needed color temperature by adjusting the switch. Close the junction box.
3. Insert the junction box into the cut hole, leaving the connection cable outside. Connect the fixture to the Junction box inserting the cable and securing it with a cap. Push the spring loaded clips upwards and insert the fixture base into the mounting hole. Release the clips, so the fixture fits securely.



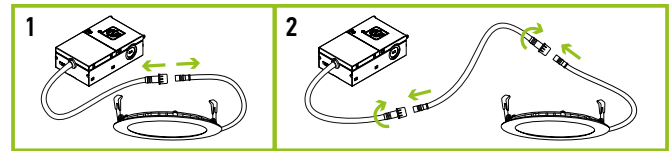
* The fixture is suitable for ceiling thickness less than 0.5 inch (0.7 inch. for JBR-GB and JBR-GBA).

ELECTRICAL SCHEMATIC DIAGRAM:



EXTENSION CORD INSTALLATION:

1. Disconnect the LED Mini Panel cable from the Junction box cable.
2. Connect one end of the Extension Cord to the LED Mini Panel cable, and the other end of the Extension Cord to the Junction box cable.

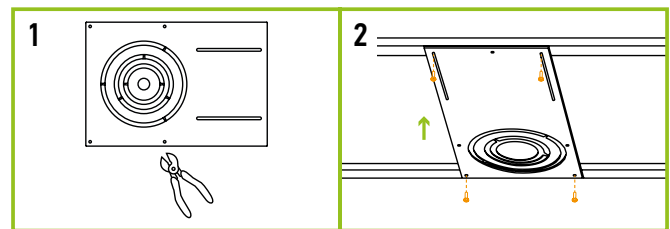


MOUNTING PLATE INSTALLATION

ASD-MPLR-346-FA	ASD-MPLR18-346-FA	ASD-MPLR-81012-FA
ASD-MPLS-346-FA	ASD-MPLS-81012-FA	ASD-MPLR-346-FS
ASD-MPLS-346-FS	ASD-MPLR-81012-FS	ASD-MPLS-81012-FS
ASD-MPLS-346-SC	ASD-MPLR-346-SC	ASD-MPLR-81012-SC

sold separately:

1. Remove the metal ring from the mounting plate according to the size of fixture.
2. Place the mounting plate and secure its position with screws on the beams.



ORDERING INFORMATION

Model	UPC	Pcs. (pack) per carton	Carton size	Carton weight	GTIN 14
JBR ROUND					
ASD-JBR-3D6AC-WH	810050739047	6	9.8" x 9.5" x 4.1"	4 lbs	10810050739044
ASD-JBR-3D6AC-WH-6PACK	810050737449	12 (2)	17.1" x 10" x 4.5"	6.2 lbs	10810050737446
ASD-JBR-3D6AC-WH-12PACK	810128116442	12 (1)	15.4" x 9.5" x 3.9"	5.7 lbs	-
ASD-JBR-3D6AC-NK	810050739061	6	9.8" x 9.5" x 4.1"	4 lbs	10810050739068
ASD-JBR-3D6AC-NK-6PACK	810050738385	12 (2)	17.1" x 10" x 4.5"	6.2 lbs	20810050738389
ASD-JBR-3D6AC-BR	810128115070	6	9.8" x 9.5" x 4.1"	4 lbs	10810128115077
ASD-JBR-3D6AC-BZ-6PACK	819201022458	12 (2)	17.1" x 10" x 4.5"	6.2 lbs	20819201022452
ASD-JBR-3D6AC-BK	810050739054	6	9.8" x 9.5" x 4.1"	4 lbs	10810050739051
ASD-JBR-3D6AC-BK-6PACK	810050737456	12 (2)	17.1" x 10" x 4.5"	6.2 lbs	10810050737453
ASD-JBR-3D6AC-BK-12PACK	810128116435	12 (1)	15.4" x 9.5" x 3.9"	5.7 lbs	-

For most up-to-date spec sheets please refer to asd-lighting.com



LED RECESSED MINI PANEL

Model	UPC	Pcs. (pack) per carton	Carton size	Carton weight	GTIN 14
ASD-JBR-4D12AC-WH-6PACK	810050737197	12 (2)	12.6" x 12.6" x 6.3"	9.3 lbs	10810050737194
ASD-JBR-4D12AC-WH-12PACK	810050739719	12 (1)	12" x 11.6" x 5.3"	8.8 lbs	-
ASD-JBR-4D12AC-NK-6PACK	810050738392	12 (2)	12.6" x 12.6" x 6.3"	9.3 lbs	20810050738396
ASD-JBR-4D12AC-BR	810128115087	6	10.4" x 9.5" x 5.5"	4.9 lbs	10810128115084
ASD-JBR-4D12AC-BZ-6PACK	810050738903	12 (2)	12.6" x 12.6" x 6.3"	9.3 lbs	10810050738900
ASD-JBR-4D12AC-BK-6PACK	810050737210	12 (2)	12.6" x 12.6" x 6.3"	9.3 lbs	10810050737217
ASD-JBR-4D12AC-BK-12PACK	810128116497	12 (1)	12" x 11.6" x 5.3"	7.4 lbs	-
ASD-JBR-6D15AC-WH	810050739115	6	14.4" x 9.5" x 7.5"	6.4 lbs	10810050739112
ASD-JBR-6D15AC-WH-6PACK	810050737241	12 (2)	13" x 12.4" x 8"	11.1 lbs	10810050737248
ASD-JBR-6D15AC-WH-12PACK	810050739726	12 (1)	12.4" x 10.8" x 7.3"	10.4 lbs	-
ASD-JBR-6D15AC-NK-6PACK	810050738408	12 (2)	13" x 12.4" x 8"	11.1 lbs	20810050738402
ASD-JBR-6D15AC-BZ-6PACK	810050738910	12 (2)	13" x 12.4" x 8"	11.1 lbs	10810050738917
ASD-JBR-6D15AC-BK-6PACK	810050737265	12 (2)	13" x 12.4" x 8"	11.1 lbs	10810050737262
ASD-JBR-6D15AC-BK-12PACK	810128116503	12 (1)	12.4" x 10.8" x 7.3"	9.4 lbs	-
ASD-JBR-8D20AC-WH	810050737470	4	9.7" x 9.7" x 9.5"	6 lbs	10810050737477
ASD-JBR-8D20AC-BK	810050737487	4	9.7" x 9.7" x 9.5"	6 lbs	10810050737484
ASD-JBR-12D24AC-WH	810050737494	4	12.4" x 9.6" x 12.4"	7.9 lbs	10810050737491
ASD-JBR-12D24AC-BK	810050737500	4	12.4" x 9.6" x 12.4"	7.9 lbs	10810050737507
JBS SQUARE					
ASD-JBS-3D6AC-WH-6PACK	810050737524	12 (2)	17.1" x 10" x 4.5"	6.6 lbs	10810050737521
ASD-JBS-3D6AC-NK-6PACK	810050738415	12 (2)	17.1" x 10" x 4.5"	6.6 lbs	20810050738419
ASD-JBS-3D6AC-BZ-6PACK	819201022465	12 (2)	17.1" x 10" x 4.5"	6.6 lbs	20819201022469
ASD-JBS-3D6AC-BK-6PACK	810050737548	12 (2)	17.1" x 10" x 4.5"	6.6 lbs	10810050737545
ASD-JBS-4D12AC-WH-6PACK	810050737289	12 (2)	12.6" x 12.6" x 6.3"	9.3 lbs	10810050737286
ASD-JBS-4D12AC-NK-6PACK	810050738422	12 (2)	12.6" x 12.6" x 6.3"	9.3 lbs	20810050738426
ASD-JBS-4D12AC-BZ-6PACK	810050738927	12 (2)	12.6" x 12.6" x 6.3"	9.3 lbs	10810050738924
ASD-JBS-4D12AC-BK-6PACK	810050737302	12 (2)	12.6" x 12.6" x 6.3"	9.3 lbs	10810050737309
ASD-JBS-6D15AC-WH-6PACK	810050737326	12 (2)	14" x 12.4" x 8"	12.1 lbs	10810050737323
ASD-JBS-6D15AC-NK-6PACK	810050738439	12 (2)	14" x 12.4" x 8"	12.1 lbs	20810050738433
ASD-JBS-6D15AC-BZ-6PACK	810050738934	12 (2)	14" x 12.4" x 8"	12.1 lbs	10810050738931
ASD-JBS-6D15AC-BK-6PACK	810050737562	12 (2)	14" x 12.4" x 8"	12.1 lbs	10810050737569
ASD-JBS-8D20AC-WH	810050737579	4	10.4" x 9.7" x 9.5"	6.6 lbs	10810050737576
ASD-JBS-8D20AC-BK	810050737586	4	10.4" x 9.7" x 9.5"	6.6 lbs	10810050737583
ASD-JBS-12D24AC-WH	810050737593	4	13.4" x 9.7" x 12.3"	9.5 lbs	10810050737590
ASD-JBS-12D24AC-BK	810050737609	4	13.4" x 9.7" x 12.3"	9.5 lbs	10810050737606
JBR-GB ROUND GIMBAL					
ASD-JBR-GB-3D6AC-WH-6PACK	810050738613	12 (2)	17.1" x 9.8" x 5.3"	9.5 lbs	10810050738610
ASD-JBR-GBA-3D6AC-WH-6PACK	810128110587	12 (2)	17.9" x 11" x 5.5"	11 lbs	10810128110584
ASD-JBR-GBA-3D6AC-BK-6PACK	810050739382	12 (2)	17.9" x 11" x 5.5"	11 lbs	10810050739389
ASD-JBR-GB-4D12AC-WH-6PACK	810050738620	12 (2)	19.1" x 11.8" x 6.5"	10.6 lbs	10810050738627
ASD-JBR-GBA-4D12AC-WH-6PACK	810128110600	12 (2)	12.4" x 12.4" x 11.6"	16.5 lbs	10810128110607
ASD-JBR-GBA-4D12AC-BK-6PACK	810050739405	12 (2)	12.4" x 12.4" x 11.6"	16.5 lbs	10810050739402
ASD-JBR-GB-6D15AC-WH-6PACK	810050738637	12 (2)	16.7" x 12.6" x 8.9"	17.9 lbs	10810050738634
ASD-JBR-GBA-6D15AC-WH-6PACK	810128110624	12 (2)	18.9" x 16.5" x 8.9"	23.1 lbs	10810128110621
ASD-JBR-GBA-6D15AC-BK-6PACK	810050739429	12 (2)	18.9" x 16.5" x 8.9"	23.1 lbs	10810050739426

ACCESSORIES:

Model	Description	UPC	Pcs. (pack) per carton	Carton size	Carton weight	GTIN 14 in carton
ASD-MPLR-346-FA-6PACK	New construction flat mounting plate with asymmetric round holes 3-4-6"	810050739344	4	14.4" x 9.8" x 3.2"	22.5 lbs	10810050739341
ASD-MPLR18-346-FA-6PACK	New construction flat mounting plate 18" with asymmetric round holes 3-4-6"	810128112826	4	18.9" x 9.8" x 3.2"	32.9 lbs	10810128112823
ASD-MPLR-81012-FA-6PACK	New construction flat mounting plate with asymmetric round holes 8-10-12"	810128111553	4	19.5" x 14.2" x 3.2"	38.7 lbs	10810128111550
ASD-MPLS-346-FA-6PACK	New construction flat mounting plate with asymmetric square holes 3-4-6"	810128110303	4	14.4" x 9.8" x 3.2"	22.7 lbs	10810128110300
ASD-MPLS-81012-FA-6PACK	New construction flat mounting plate with asymmetric square holes 8-10-12"	810128112833	4	19.5" x 14.2" x 3.2"	32.9 lbs	10810128112830
ASD-MPLR-346-FS-6PACK	New construction flat mounting plate with symmetric round holes 3-4-6"	810050739351	4	27.2" x 9.1" x 3.2"	25.2 lbs	10810050739358
ASD-MPLR-81012-FS-6PACK	New construction flat mounting plate with symmetric round holes 8-10-12"	810128111577	4	27" x 13.8" x 3.2"	42.9 lbs	10810128111574
ASD-MPLS-346-FS-6PACK	New construction flat mounting plate with symmetric square holes 3-4-6"	810128110310	4	27" x 9.1" x 3.2"	26 lbs	10810128110317
ASD-MPLS-81012-FS-6PACK	New construction flat mounting plate with symmetric square holes 8-10-12"	810128112840	4	27" x 13.8" x 3.2"	39.1 lbs	10810128112847
ASD-MPLR-346-SC-6PACK	New construction mounting plate with round holes and sliding clips 3-4-6"	810050739337	2	17.3" x 11.9" x 13.4"	17 lbs	10810050739334
ASD-MPLR-81012-SC-6PACK	New construction mounting plate with round holes and sliding clips 8-10-12"	810128111607	2	21.3" x 17.5" x 15.6"	24.7 lbs	10810128111604
ASD-MPLS-346-SC-6PACK	New construction mounting plate with square holes and sliding clips 3-4-6"	810128110327	2	17.3" x 11.9" x 13.4"	16.5 lbs	10810128110324
ASD-EC-10A-6PACK	Extension cord 3pin 10'	810128110471	10	7.7" x 6.1" x 5.3"	1.8 lbs	10810128110478
ASD-EC-20A-6PACK	Extension cord 3pin 20'	810128110488	10	7.7" x 6.1" x 7.3"	3.1 lbs	10810128110485

For most up-to-date spec sheets please refer to asd-lighting.com



LED RECESSED MINI PANEL

ANNEX 1

Model	Watts	2,700 K	3,000 K	3,500 K	4,000 K	5,000 K
ASD-JBR-3D6AC-WH ASD-JBR-3D6AC-WH-6PACK ASD-JBR-3D6AC-WH-12PACK ASD-JBR-3D6AC-NK ASD-JBR-3D6AC-NK-6PACK ASD-JBR-3D6AC-BR ASD-JBR-3D6AC-BZ-6PACK ASD-JBR-3D6AC-BK ASD-JBR-3D6AC-BK-6PACK ASD-JBR-3D6AC-BK-12PACK	6W	420 lm	445 lm	460 lm	455 lm	436 lm
ASD-JBR-4D12AC-WH-6PACK ASD-JBR-4D12AC-WH-12PACK ASD-JBR-4D12AC-NK-6PACK ASD-JBR-4D12AC-BR ASD-JBR-4D12AC-BZ-6PACK ASD-JBR-4D12AC-BK-6PACK ASD-JBR-4D12AC-BK-12PACK	12W	780 lm	839 lm	893 lm	861 lm	860 lm
ASD-JBR-6D15AC-WH ASD-JBR-6D15AC-WH-6PACK ASD-JBR-6D15AC-WH-12PACK ASD-JBR-6D15AC-NK-6PACK ASD-JBR-6D15AC-BZ-6PACK ASD-JBR-6D15AC-BK-6PACK ASD-JBR-6D15AC-BK-12PACK	15W	1,100 lm	1,137 lm	1,225 lm	1,153 lm	1,094 lm
ASD-JBR-8D20AC-WH ASD-JBR-8D20AC-BK	20W	1,600 lm	1,650 lm	1,688 lm	1,746 lm	1,633 lm
ASD-JBR-12D24AC-WH ASD-JBR-12D24AC-BK	24W	1,950 lm	2,142 lm	2,138 lm	2,169 lm	2,077 lm
ASD-JBS-3D6AC-WH-6PACK ASD-JBS-3D6AC-NK-6PACK ASD-JBS-3D6AC-BZ-6PACK ASD-JBS-3D6AC-BK-6PACK	6W	420 lm	442 lm	456 lm	445 lm	430 lm
ASD-JBS-4D12AC-WH-6PACK ASD-JBS-4D12AC-NK-6PACK ASD-JBS-4D12AC-BZ-6PACK ASD-JBS-4D12AC-BK-6PACK	12W	750 lm	767 lm	736 lm	784 lm	750 lm
ASD-JBS-6D15AC-WH-6PACK ASD-JBS-6D15AC-NK-6PACK ASD-JBS-6D15AC-BZ-6PACK ASD-JBS-6D15AC-BK-6PACK	15W	1,050 lm	1,117 lm	1,197 lm	1,144 lm	1,095 lm
ASD-JBS-8D20AC-WH ASD-JBS-8D20AC-BK	20W	1,550 lm	1,694 lm	1,743 lm	1,721 lm	1,654 lm
ASD-JBS-12D24AC-WH ASD-JBS-12D24AC-BK	24W	1,900 lm	1,932 lm	2,018 lm	2,006 lm	2,152 lm
ASD-JBR-GB-3D6AC-WH-6PACK ASD-JBR-GBA-3D6AC-WH-6PACK ASD-JBR-GBA-3D6AC-BK-6PACK	6W	435 lm	449 lm	463 lm	461 lm	443 lm
ASD-JBR-GB-4D12AC-WH-6PACK ASD-JBR-GBA-4D12AC-WH-6PACK ASD-JBR-GBA-4D12AC-BK-6PACK	12W	777 lm	803 lm	842 lm	793 lm	795 lm
ASD-JBR-GB-6D15AC-WH-6PACK ASD-JBR-GBA-6D15AC-WH-6PACK ASD-JBR-GBA-6D15AC-BK-6PACK	15W	1,085 lm	1,156 lm	1,232 lm	1,208 lm	1,184 lm

For most up-to-date spec sheets please refer to asd-lighting.com