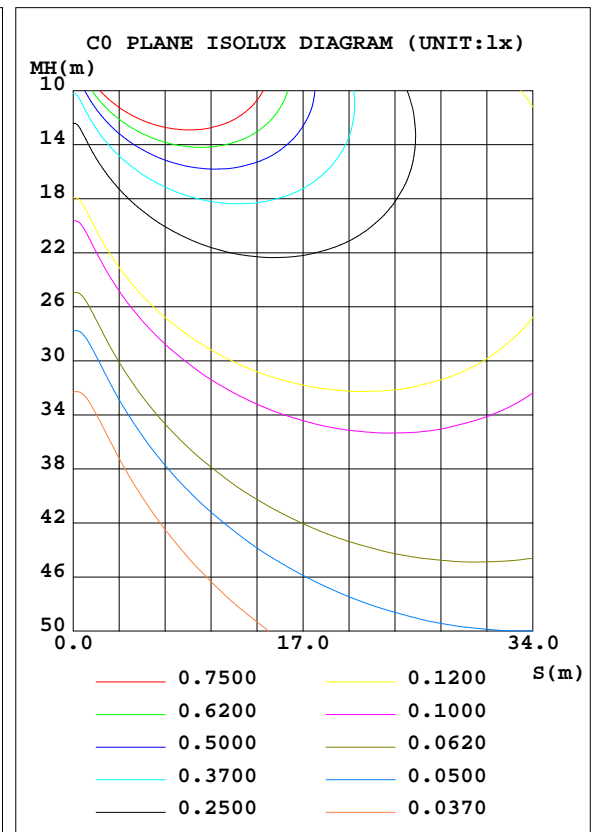
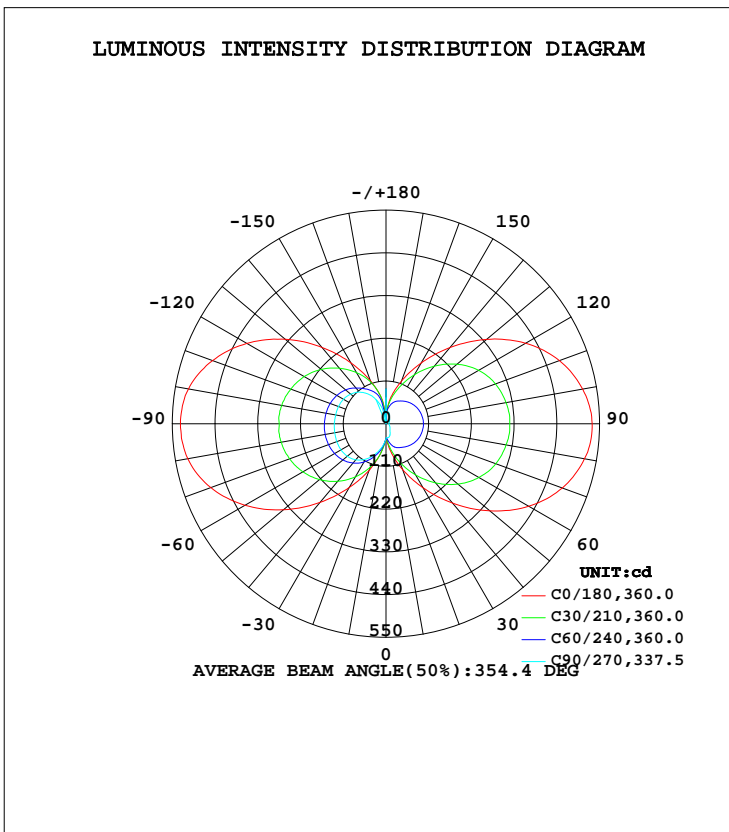


LUMINAIRE PHOTOMETRIC TEST REPORT

Test:U:120.0V I:0.3431A P:40.26W PF:0.9778 Freq:60.00Hz Lamp Flux:2468.8x1 lm		
NAME:	TYPE:LED	WEIGHT:
SPEC.:ASD-LWS27B-72D40BK_5000K	DIM.:	SERIAL No.:
MFR.: ASD Lighting Corp	SUR.:	Shielding Angle:

DATA OF LAMP		PHOTOMETRIC DATA			
MODEL	ASD-LWS27B-72D40BK	Imax(cd)	530.8	S/MH(C0/180)	5.10
NOMINAL POWER(W)	40	LOR(%)	100.0	S/MH(C90/270)	3.10
RATED VOLTAGE(V)	120-277	TOTAL FLUX(lm)	2468.8	η UP, DN(C0-180)	23.2,23.7
NOMINAL FLUX(lm)	2468.8	CIE CLASS	DIFFUSE	η UP, DN(C180-360)	26.0,27.0
LAMPS INSIDE	1	η up(%)	49.3	CIBSE SHR NOM	1.25
TEST VOLTAGE(V)	120	η down(%)	50.7	CIBSE SHR MAX	1.35



C Range: 0 - 360DEG
 C Interval: 15.0DEG
 Test Speed: HIGH
 Temperature: 24.9DEG
 Operators: Alan Wang
 Test Date: 14 December 2023

γ Range: 0 - 180DEG
 γ Interval: 1.0DEG
 Test System: EVERFINE GO-R5000_V2 SYSTEM V2.00.416
 Humidity: 42.0%
 Test Distance: 2.500m [K=1.0423]
 Remarks:

ZONAL FLUX DIAGRAM

ZONAL FLUX DIAGRAM:

γ	C0	C45	C90	C135	C180	C225	C270	C315	γ	Φ zone	Φ total	%lum,lamp
10	73.58	57.43	35.98	58.85	75.16	71.44	61.32	70.76	0- 10	5.033	5.033	0.20,0.20
20	125.7	86.16	30.77	90.23	128.7	105.3	83.84	107.0	10- 20	22.72	27.75	1.12,1.12
30	189.9	109.7	21.06	118.0	189.8	134.7	105.5	138.9	20- 30	51.41	79.16	3.21,3.21
40	266.4	127.3	16.39	140.3	264.4	158.9	121.2	165.2	30- 40	89.96	169.1	6.85,6.85
50	349.1	141.8	13.42	158.4	344.7	178.0	130.2	186.0	40- 50	136.0	305.1	12.4,12.4
60	424.7	152.5	11.05	171.7	419.7	191.8	134.2	201.7	50- 60	184.1	489.3	19.8,19.8
70	483.2	159.3	9.112	179.7	480.1	201.3	134.9	212.1	60- 70	227.6	716.8	29,29
80	518.8	162.7	7.730	184.0	518.2	206.0	134.2	216.9	70- 80	259.7	976.5	39.6,39.6
90	530.8	163.3	7.571	184.0	529.0	206.5	133.1	216.9	80- 90	276.3	1253	50.7,50.7
100	514.5	163.0	7.577	183.9	516.6	203.9	131.6	213.2	90-100	275.1	1528	61.9,61.9
110	475.3	158.2	8.556	177.1	475.6	196.8	130.3	205.5	100-110	256.1	1784	72.3,72.3
120	415.0	150.7	10.14	167.0	413.9	185.6	126.5	193.1	110-120	222.3	2006	81.3,81.3
130	338.0	139.4	12.19	152.3	338.8	170.1	118.8	176.6	120-130	178.2	2185	88.5,88.5
140	256.2	124.4	14.81	132.8	256.8	149.9	106.6	154.7	130-140	130.0	2315	93.8,93.8
150	180.5	105.2	18.83	109.2	181.3	128.2	87.39	124.9	140-150	84.41	2399	97.2,97.2
160	117.2	80.79	26.53	81.39	117.9	102.7	60.64	85.49	150-160	47.02	2446	99.1,99.1
170	66.36	52.53	31.03	50.84	67.00	59.53	17.10	40.41	160-170	19.66	2466	99.9,99.9
180	90.47	90.47	90.47	90.47	30.41	30.41	30.41	30.41	170-180	3.096	2469	100,100
DEG	LUMINOUS INTENSITY:cd									UNIT:lm		

Conical surface Flux(90deg): 231.08 lm

%lum = 9.4%

%lamp = 9.4%

Conical surface Flux(120deg): 489.27 lm

%lum = 19.8%

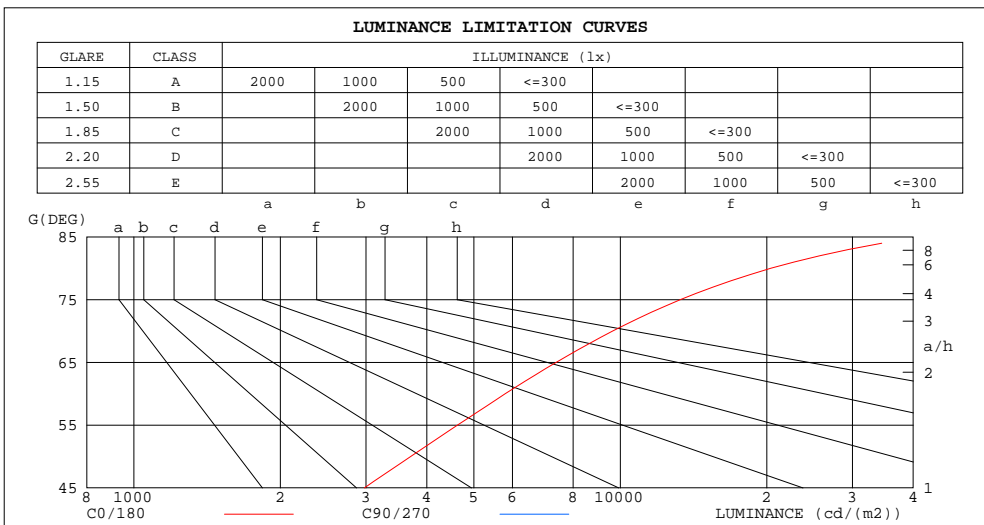
%lamp = 19.8%

C Range: 0 - 360DEG
 C Interval: 15.0DEG
 Test Speed: HIGH
 Temperature: 24.9DEG
 Operators: Alan Wang
 Test Date: 14 December 2023

γ Range: 0 - 180DEG
 γ Interval: 1.0DEG
 Test System: EVERFINE GO-R5000_V2 SYSTEM V2.00.416
 Humidity: 42.0%
 Test Distance: 2.500m [K=1.0423]
 Remarks:

LUMINANCE LIMITATION CURVES

Test:U:120.0V I:0.3431A P:40.26W PF:0.9778 Freq:60.00Hz Lamp Flux:2468.8x1 lm		
NAME:	TYPE:LED	WEIGHT:
SPEC.:ASD-LWS27B-72D40BK_5000K	DIM.:	SERIAL No.:
MFR.: ASD Lighting Corp	SUR.:	Shielding Angle:



LUMINANCE cd/(m2)		
G(DEG)	C0/180	C90/270
85	41441	597
80	20409	304
75	13293	219
70	9651	182
65	7385	162
60	5802	151
55	4629	145
50	3710	143
45	2977	143

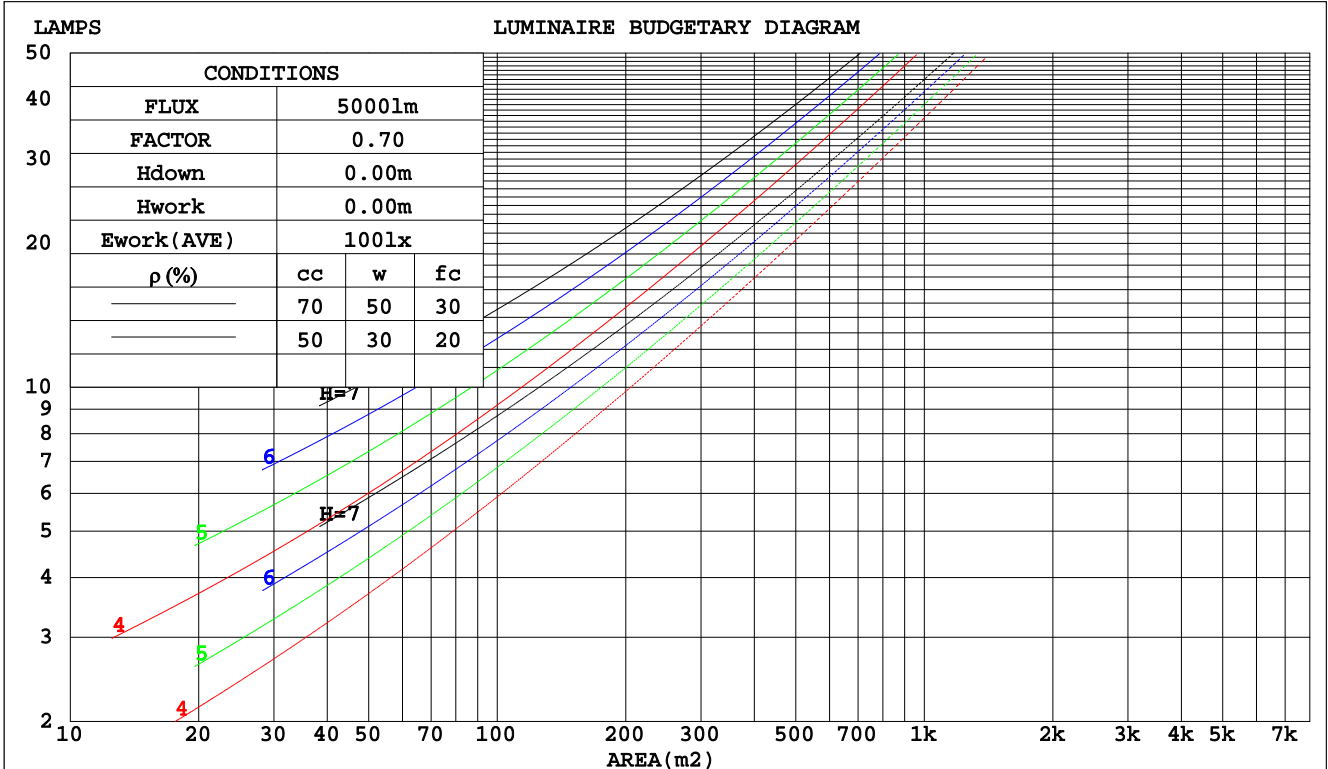
C Range: 0 - 360DEG
 C Interval: 15.0DEG
 Test Speed: HIGH
 Temperature: 24.9DEG
 Operators: Alan Wang
 Test Date: 14 December 2023

γ Range: 0 - 180DEG
 γ Interval: 1.0DEG
 Test System: EVERFINE GO-R5000_V2 SYSTEM V2.00.416
 Humidity: 42.0%
 Test Distance: 2.500m [K=1.0423]
 Remarks:

CU AND LUMINAIRE BUDGETARY ESTIMATE DIAGRAM

Test:U:120.0V I:0.3431A P:40.26W PF:0.9778 Freq:60.00Hz Lamp Flux:2468.8x1 lm		
NAME:	TYPE:LED	WEIGHT:
SPEC.:ASD-LWS27B-72D40BK_5000K	DIM.:	SERIAL No.:
MFR.: ASD Lighting Corp	SUR.:	Shielding Angle:

pcc	80%			70%			50%			30%			10%			0
	50%	30%	10%	50%	30%	10%	50%	30%	10%	50%	30%	10%	50%	30%	10%	0
pw																0
pfc	20%			20%			20%			20%			20%			0
RCR	RCR:Room Cavity Ratio						Coefficients of Utilization(CU)									
0.0	1.07	1.07	1.07	.99	.99	.99	.84	.84	.84	.70	.70	.70	.57	.57	.57	.51
1.0	.85	.79	.74	.78	.73	.68	.65	.61	.57	.53	.49	.46	.41	.39	.37	.31
2.0	.71	.63	.56	.65	.58	.51	.54	.48	.43	.43	.38	.34	.33	.30	.27	.22
3.0	.61	.52	.44	.56	.47	.40	.46	.39	.33	.36	.31	.27	.27	.24	.20	.16
4.0	.53	.43	.36	.48	.39	.33	.39	.32	.27	.31	.26	.21	.24	.19	.16	.12
5.0	.46	.37	.29	.42	.34	.27	.35	.28	.22	.27	.22	.18	.21	.16	.13	.09
6.0	.41	.32	.25	.37	.29	.23	.31	.24	.19	.24	.19	.15	.18	.14	.11	.08
7.0	.37	.28	.21	.33	.25	.19	.27	.21	.16	.22	.16	.12	.16	.12	.09	.06
8.0	.33	.24	.18	.30	.22	.17	.25	.18	.14	.20	.15	.11	.15	.11	.08	.05
9.0	.30	.21	.16	.27	.20	.15	.22	.16	.12	.18	.13	.09	.14	.10	.07	.04
10.0	.27	.19	.14	.25	.18	.13	.21	.15	.10	.16	.12	.08	.13	.09	.06	.04



C Range: 0 - 360DEG
 C Interval: 15.0DEG
 Test Speed: HIGH
 Temperature: 24.9DEG
 Operators: Alan Wang
 Test Date: 14 December 2023

γ Range: 0 - 180DEG
 γ Interval: 1.0DEG
 Test System: EVERFINE GO-R5000_V2 SYSTEM V2.00.416
 Humidity: 42.0%
 Test Distance: 2.500m [K=1.0423]
 Remarks:

WEC AND CCEC

Test:U:120.0V I:0.3431A P:40.26W PF:0.9778 Freq:60.00Hz Lamp Flux:2468.8x1 lm		
NAME:	TYPE:LED	WEIGHT:
SPEC.:ASD-LWS27B-72D40BK_5000K	DIM.:	SERIAL No.:
MFR.: ASD Lighting Corp	SUR.:	Shielding Angle:

ρcc	80%			70%			50%			30%			10%			0
ρw	50%	30%	10%	50%	30%	10%	50%	30%	10%	50%	30%	10%	50%	30%	10%	0
ρfc	20%			20%			20%			20%			20%			0
RCR	RCR:Room Cavity Ratio						Wall Exitance Coefficients(WEC)									
0.0																
1.0	.437	.248	.079	.414	.236	.075	.373	.214	.068	.334	.193	.062	.299	.173	.056	
2.0	.360	.197	.060	.339	.187	.058	.301	.167	.052	.266	.149	.047	.233	.132	.042	
3.0	.311	.166	.050	.292	.157	.047	.258	.140	.042	.225	.123	.038	.195	.108	.033	
4.0	.275	.143	.042	.258	.135	.040	.226	.120	.036	.196	.105	.032	.169	.092	.028	
5.0	.247	.126	.036	.232	.119	.035	.202	.105	.031	.175	.092	.027	.149	.080	.024	
6.0	.224	.113	.032	.210	.106	.031	.183	.094	.027	.157	.082	.024	.134	.070	.021	
7.0	.206	.102	.029	.192	.096	.027	.167	.085	.024	.144	.074	.021	.121	.063	.019	
8.0	.190	.093	.026	.177	.087	.025	.154	.077	.022	.132	.067	.019	.111	.057	.017	
9.0	.176	.085	.024	.164	.080	.022	.143	.071	.020	.122	.061	.018	.103	.052	.015	
10.0	.164	.079	.022	.153	.074	.021	.133	.065	.018	.114	.057	.016	.096	.048	.014	

ρcc	80%			70%			50%			30%			10%			0
ρw	50%	30%	10%	50%	30%	10%	50%	30%	10%	50%	30%	10%	50%	30%	10%	0
ρfc	20%			20%			20%			20%			20%			0
RCR	RCR:Room Cavity Ratio						Ceiling Cavity Exitance Coefficients(CCEC)									
0.0	.566	.566	.566	.484	.484	.484	.330	.330	.330	.190	.190	.190	.061	.061	.061	
1.0	.567	.533	.503	.486	.458	.433	.332	.315	.299	.191	.182	.174	.061	.059	.056	
2.0	.562	.512	.471	.482	.441	.407	.330	.305	.284	.190	.178	.166	.061	.057	.054	
3.0	.555	.498	.451	.476	.429	.391	.327	.298	.275	.189	.174	.162	.061	.057	.053	
4.0	.548	.486	.439	.470	.420	.381	.323	.293	.269	.187	.171	.159	.060	.056	.052	
5.0	.540	.477	.431	.464	.413	.375	.320	.288	.265	.185	.169	.157	.060	.055	.052	
6.0	.533	.470	.425	.458	.407	.370	.316	.285	.262	.183	.168	.156	.059	.055	.051	
7.0	.526	.464	.420	.453	.402	.366	.313	.282	.260	.182	.166	.155	.059	.054	.051	
8.0	.519	.459	.417	.447	.398	.364	.309	.279	.258	.180	.165	.154	.058	.054	.051	
9.0	.513	.454	.415	.442	.394	.362	.306	.277	.257	.178	.164	.153	.058	.054	.051	
10.0	.507	.450	.412	.437	.391	.360	.303	.275	.256	.177	.163	.153	.057	.053	.051	

C Range: 0 - 360DEG
 C Interval: 15.0DEG
 Test Speed: HIGH
 Temperature: 24.9DEG
 Operators: Alan Wang
 Test Date: 14 December 2023

γ Range: 0 - 180DEG
 γ Interval: 1.0DEG
 Test System: EVERFINE GO-R5000_V2 SYSTEM V2.00.416
 Humidity: 42.0%
 Test Distance: 2.500m [K=1.0423]
 Remarks:

UGR(Unified Glare Rating) Table

Test:U:120.0V I:0.3431A P:40.26W PF:0.9778 Freq:60.00Hz Lamp Flux:2468.8x1 lm										
NAME:					TYPE:LED			WEIGHT:		
SPEC.:ASD-LWS27B-72D40BK_5000K					DIM.:			SERIAL No.:		
MFR.: ASD Lighting Corp					SUR.:			Shielding Angle:		
ceiling/cavity	0.7	0.7	0.5	0.5	0.3	0.7	0.7	0.5	0.5	0.3
walls	0.5	0.3	0.5	0.3	0.3	0.5	0.3	0.5	0.3	0.3
working plane	0.2	0.2	0.2	0.2	0.2	0.2	0.2	0.2	0.2	0.2
Room dimensions	Viewed crosswise					Viewed endwise				
x = 2H y = 2H	16.7	17.8	17.5	18.7	19.9	4.7	5.8	5.6	6.7	7.9
3H	21.1	22.1	22.0	23.0	24.2	6.1	7.1	6.9	8.0	9.2
4H	23.4	24.4	24.3	25.3	26.5	6.7	7.7	7.6	8.6	9.8
6H	25.8	26.7	26.7	27.6	28.9	7.3	8.2	8.2	9.2	10.4
8H	27.1	28.0	28.0	28.9	30.1	7.6	8.5	8.5	9.4	10.7
12H	28.5	29.4	29.4	30.3	31.6	7.9	8.8	8.8	9.7	11.0
4H 2H	16.6	17.6	17.5	18.5	19.8	9.7	10.7	10.6	11.6	12.8
3H	21.3	22.2	22.3	23.1	24.4	11.1	12.0	12.0	12.9	14.2
4H	24.0	24.7	24.9	25.7	27.0	11.8	12.6	12.8	13.6	14.8
6H	26.8	27.5	27.8	28.5	29.8	12.4	13.1	13.4	14.1	15.4
8H	28.3	29.0	29.3	30.0	31.3	12.7	13.4	13.7	14.3	15.6
12H	29.9	30.5	30.9	31.5	32.9	12.9	13.6	13.9	14.6	15.9
8H 4H	23.9	24.6	24.9	25.6	26.9	15.6	16.3	16.6	17.3	18.6
6H	27.1	27.6	28.1	28.6	30.0	16.6	17.1	17.6	18.1	19.5
8H	28.9	29.4	29.9	30.4	31.7	17.0	17.5	18.0	18.5	19.9
12H	30.9	31.4	31.9	32.4	33.7	17.4	17.8	18.4	18.8	20.2
12H 4H	23.9	24.5	24.8	25.5	26.8	17.3	17.9	18.2	18.9	20.2
6H	27.0	27.5	28.0	28.6	29.9	18.4	18.9	19.4	19.9	21.3
8H	28.9	29.4	29.9	30.4	31.7	19.0	19.4	20.0	20.5	21.8
Variations with the observer position at spacings:										
S = 1.0H	+ 0.1 / - 0.1					+ 0.1 / - 0.1				
1.5H	+ 0.3 / - 0.3					+ 0.2 / - 0.1				
2.0H	+ 0.4 / - 0.5					+ 0.4 / - 0.3				

CIE Pub.117, 2469 lm Total Lamp Luminous Flux Corrected (8log(F/F0) = 3.1)
 Area: 0.1464 m2

C Range: 0 - 360DEG	γ Range: 0 - 180DEG
C Interval: 15.0DEG	γ Interval: 1.0DEG
Test Speed: HIGH	Test System:EVERFINE GO-R5000_V2 SYSTEM V2.00.416
Temperature: 24.9DEG	Humidity: 42.0%
Operators:Alan Wang	Test Distance:2.500m [K=1.0423]
Test Date:14 December 2023	Remarks:

UTILIZATION FACTORS TABLE

Test:U:120.0V I:0.3431A P:40.26W PF:0.9778 Freq:60.00Hz Lamp Flux:2468.8x1 lm		
NAME:	TYPE:LED	WEIGHT:
SPEC.:ASD-LWS27B-72D40BK_5000K	DIM.:	SERIAL No.:
MFR.: ASD Lighting Corp	SUR.:	Shielding Angle:

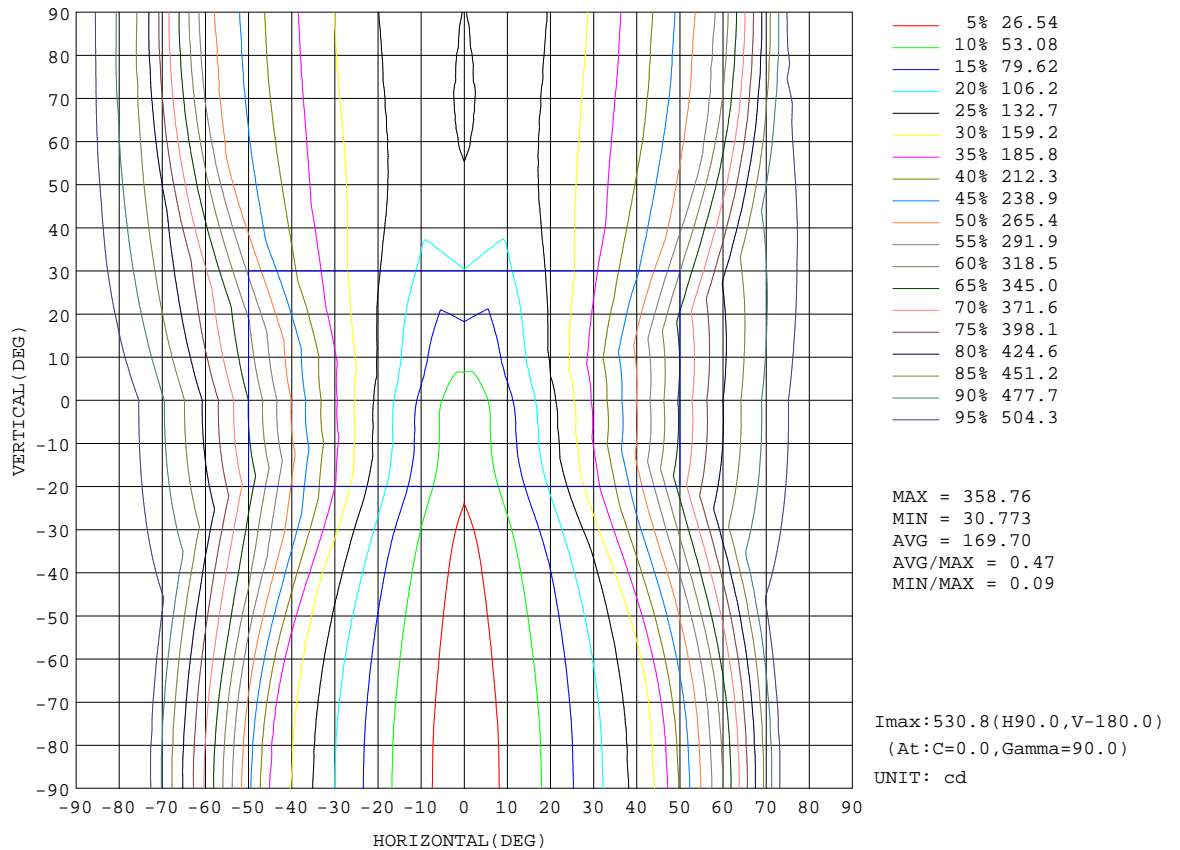
REFLECTANCE										
Ceiling	0.8	0.8	0.8	0.7	0.7	0.7	0.5	0.5	0.5	0
Walls	0.7	0.5	0.3	0.7	0.5	0.3	0.7	0.5	0.3	0
Working plane	0.2	0.2	0.2	0.2	0.2	0.2	0.2	0.2	0.2	0
ROOM INDEX	UTILIZATION FACTORS(PERCENT) $k(RI) \times RCR = 5$									
k = 0.60	34	21	14	32	20	13	29	18	12	5
0.80	42	28	19	40	27	19	35	24	17	7
1.00	50	35	25	46	33	24	40	31	21	10
1.25	56	42	32	52	39	30	45	34	26	13
1.50	62	47	37	57	44	35	49	38	31	15
2.00	70	56	46	64	52	43	55	45	37	19
2.50	75	62	52	69	58	49	59	50	42	22
3.00	79	67	58	73	63	54	62	53	47	25
4.00	85	74	66	78	69	61	66	59	53	29
5.00	88	79	72	81	73	67	68	62	57	32
ROOM INDEX	UF(total)									Direct
According to DIN EN 13032-2 2004			Suspended				SHRNOM = 1.25			

C Range: 0 - 360DEG
 C Interval: 15.0DEG
 Test Speed: HIGH
 Temperature: 24.9DEG
 Operators: Alan Wang
 Test Date: 14 December 2023

γ Range: 0 - 180DEG
 γ Interval: 1.0DEG
 Test System: EVERFINE GO-R5000_V2 SYSTEM V2.00.416
 Humidity: 42.0%
 Test Distance: 2.500m [K=1.0423]
 Remarks:

ISOCANDELA DIAGRAM

Test:U:120.0V I:0.3431A P:40.26W PF:0.9778 Freq:60.00Hz Lamp Flux:2468.8x1 lm		
NAME:	TYPE:LED	WEIGHT:
SPEC.:ASD-LWS27B-72D40BK_5000K	DIM.:	SERIAL No.:
MFR.: ASD Lighting Corp	SUR.:	Shielding Angle:

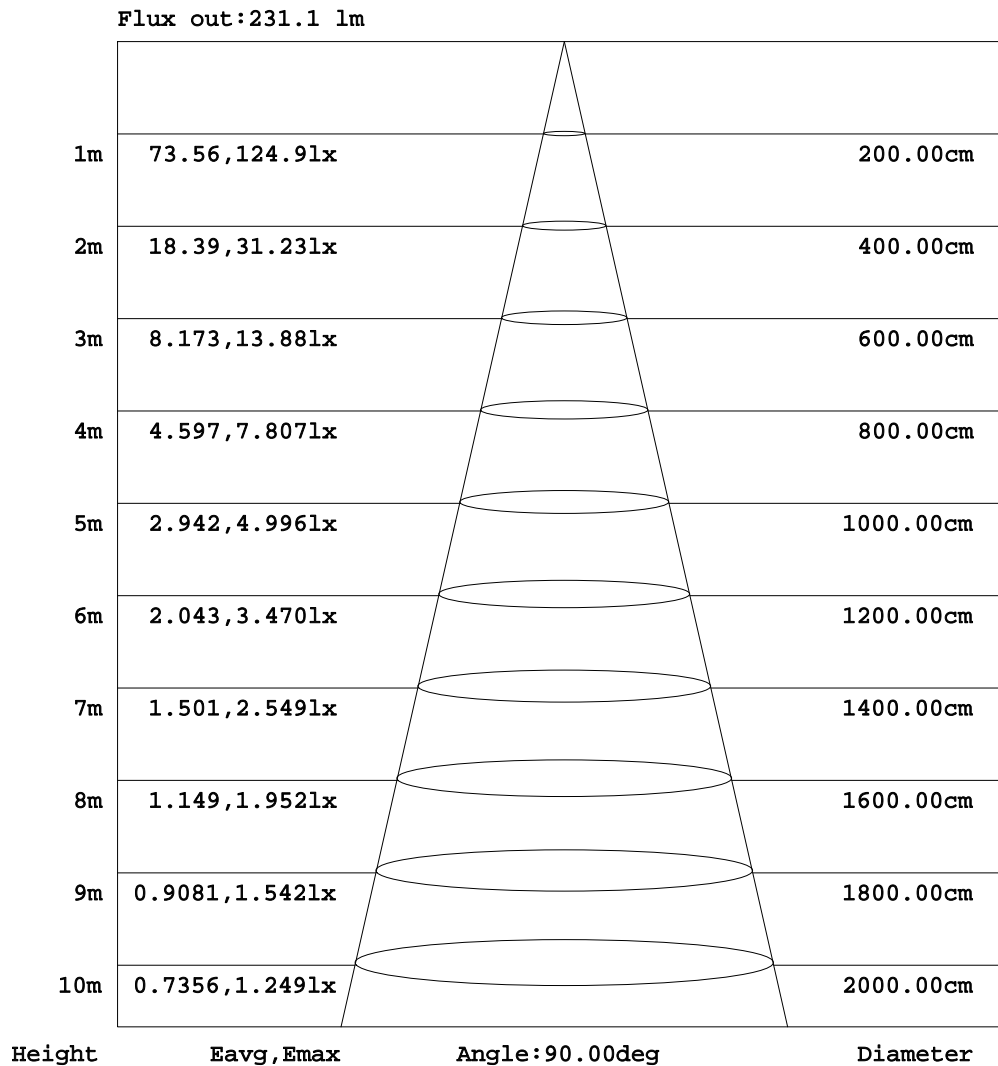


C Range: 0 - 360DEG
 C Interval: 15.0DEG
 Test Speed: HIGH
 Temperature: 24.9DEG
 Operators: Alan Wang
 Test Date: 14 December 2023

γ Range: 0 - 180DEG
 γ Interval: 1.0DEG
 Test System: EVERFINE GO-R5000_V2 SYSTEM V2.00.416
 Humidity: 42.0%
 Test Distance: 2.500m [K=1.0423]
 Remarks:

AAI Figure

Test:U:120.0V I:0.3431A P:40.26W PF:0.9778 Freq:60.00Hz Lamp Flux:2468.8x1 lm		
NAME:	TYPE:LED	WEIGHT:
SPEC.:ASD-LWS27B-72D40BK_5000K	DIM.:	SERIAL No.:
MFR.: ASD Lighting Corp	SUR.:	Shielding Angle:



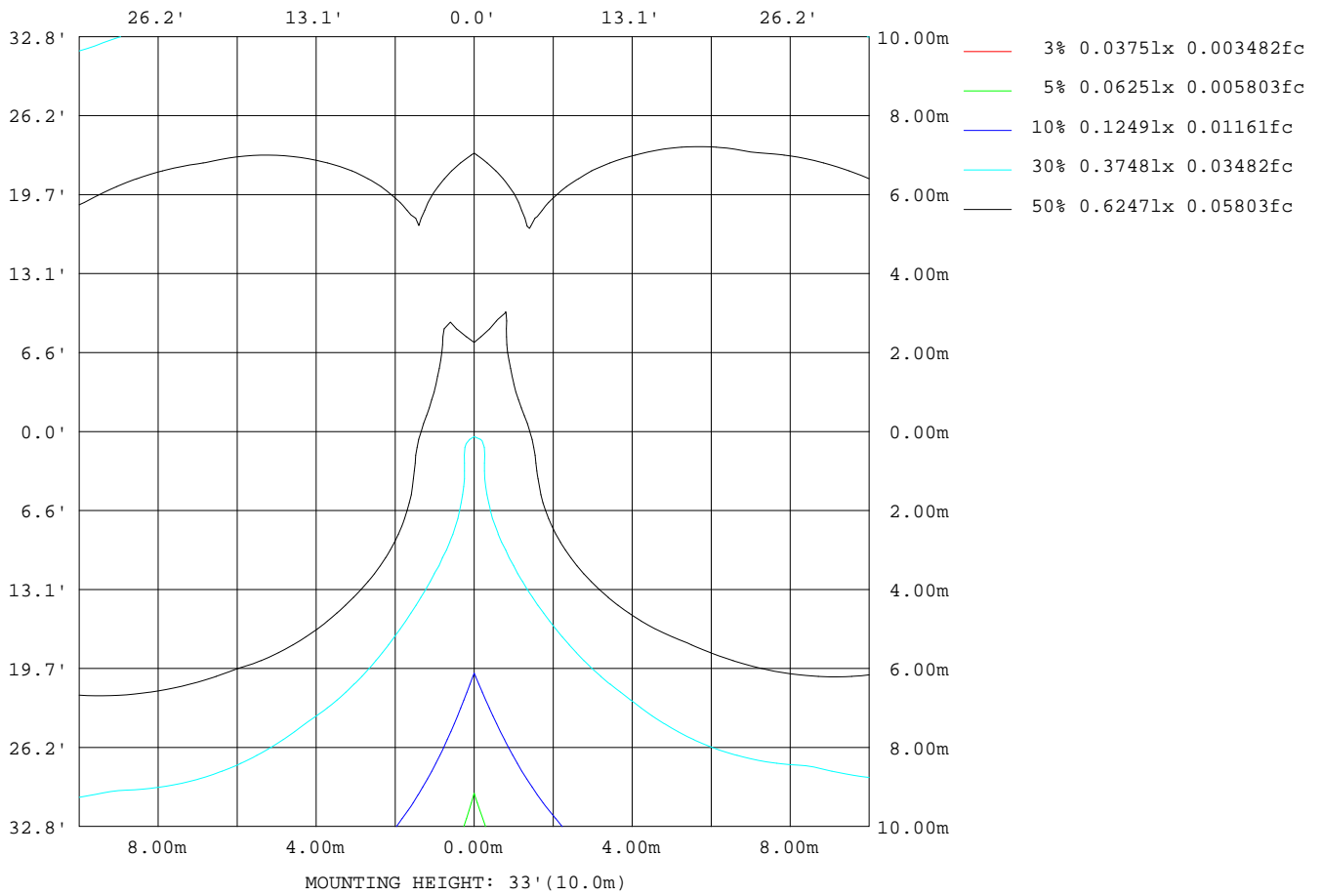
Note:The Curves indicate the illuminated area and the average illumination when the luminaire is at different distance.

C Range: 0 - 360DEG
 C Interval: 15.0DEG
 Test Speed: HIGH
 Temperature: 24.9DEG
 Operators:Alan Wang
 Test Date:14 December 2023

γ Range: 0 - 180DEG
 γ Interval: 1.0DEG
 Test System:EVERFINE GO-R5000_V2 SYSTEM V2.00.416
 Humidity: 42.0%
 Test Distance:2.500m [K=1.0423]
 Remarks:

ISOLUX DIAGRAM

Test:U:120.0V I:0.3431A P:40.26W PF:0.9778 Freq:60.00Hz Lamp Flux:2468.8x1 lm		
NAME:	TYPE:LED	WEIGHT:
SPEC.:ASD-LWS27B-72D40BK_5000K	DIM.:	SERIAL No.:
MFR.: ASD Lighting Corp	SUR.:	Shielding Angle:



C Range: 0 - 360DEG
 C Interval: 15.0DEG
 Test Speed: HIGH
 Temperature: 24.9DEG
 Operators: Alan Wang
 Test Date: 14 December 2023

γ Range: 0 - 180DEG
 γ Interval: 1.0DEG
 Test System: EVERFINE GO-R5000_V2 SYSTEM V2.00.416
 Humidity: 42.0%
 Test Distance: 2.500m [K=1.0423]
 Remarks:

LED Avg.L Report

Test:U:120.0V I:0.3431A P:40.26W PF:0.9778 Freq:60.00Hz Lamp Flux:2468.8x1 lm		
NAME:	TYPE:LED	WEIGHT:
SPEC.:ASD-LWS27B-72D40BK_5000K	DIM.:	SERIAL No.:
MFR.: ASD Lighting Corp	SUR.:	Shielding Angle:

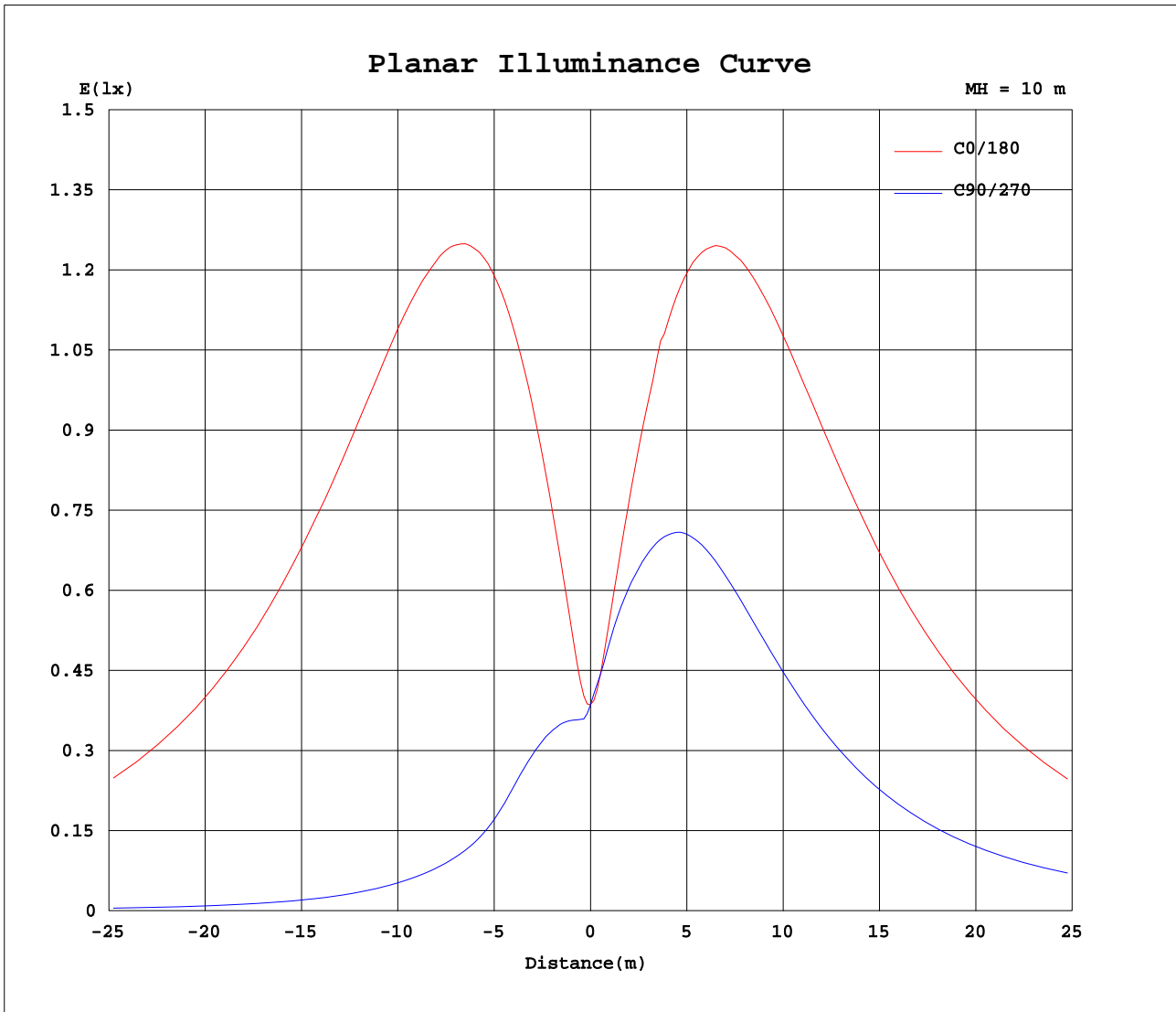
AvgL	cd/m2
L_0~180(65)av	7346
L_0~180(75)av	13278
L_0~180(85)av	41363
L_90~270(65)av	1171
L_90~270(75)av	1884
L_90~270(85)av	5537
L_45(65)av	2978
L_45(75)av	5031
L_45(85)av	15200

Standard: GB/T 29293-2012

C Range: 0 - 360DEG
C Interval: 15.0DEG
Test Speed: HIGH
Temperature: 24.9DEG
Operators: Alan Wang
Test Date: 14 December 2023

γ Range: 0 - 180DEG
 γ Interval: 1.0DEG
Test System: EVERFINE GO-R5000_V2 SYSTEM V2.00.416
Humidity: 42.0%
Test Distance: 2.500m [K=1.0423]
Remarks:

Planar Illuminance Curve



C Range: 0 - 360DEG
 C Interval: 15.0DEG
 Test Speed: HIGH
 Temperature: 24.9DEG
 Operators: Alan Wang
 Test Date: 14 December 2023

γ Range: 0 - 180DEG
 γ Interval: 1.0DEG
 Test System: EVERFINE GO-R5000_V2 SYSTEM V2.00.416
 Humidity: 42.0%
 Test Distance: 2.500m [K=1.0423]
 Remarks:

LUMINOUS DISTRIBUTION INTENSITY DATA

Test:U:120.0V I:0.3431A P:40.26W PF:0.9778 Freq:60.00Hz Lamp Flux:2468.8x1 lm		
NAME:	TYPE:LED	WEIGHT:
SPEC.:ASD-LWS27B-72D40BK_5000K	DIM.:	SERIAL No.:
MFR.: ASD Lighting Corp	SUR.:	Shielding Angle:

Table--1

UNIT: cd

C(DEG) γ (DEG)	0	15	30	45	60	75	90	105	120	135	150	165	180	195	210	225	240	255	270
0	38.6	38.6	38.6	38.6	38.6	38.6	38.6	38.6	38.6	38.6	38.6	38.6	38.6	38.6	38.6	38.6	38.6	38.6	38.6
5	50.9	49.1	46.3	43.3	40.0	37.3	36.1	37.4	40.4	44.0	47.3	50.3	52.6	53.9	53.8	52.5	50.6	49.3	49.4
10	73.6	69.7	64.5	57.4	48.7	40.2	36.0	40.6	49.8	58.8	66.1	71.2	75.2	77.2	75.9	71.4	65.0	59.4	61.3
15	98.3	92.9	84.6	72.1	57.1	42.6	34.3	43.6	59.2	74.7	87.1	95.1	99.8	102	97.6	89.0	77.9	68.0	72.4
20	126	119	106	86.2	63.6	42.8	30.8	44.5	67.0	90.2	110	122	129	127	119	105	90.3	76.6	83.8
25	156	148	129	98.8	68.0	41.4	25.5	43.5	72.6	105	134	152	157	154	139	121	103	85.8	95.2
30	190	181	152	110	71.0	39.9	21.1	42.3	76.5	118	160	185	190	182	158	135	114	94.1	105
35	227	217	175	119	74.1	39.6	18.3	42.3	80.5	130	186	220	226	212	176	148	124	102	114
40	266	255	199	127	77.6	40.2	16.4	43.0	84.5	140	212	259	264	243	193	159	132	108	121
45	308	297	221	135	81.1	40.8	14.8	43.8	88.6	150	239	300	305	274	209	169	139	112	126
50	349	338	242	142	84.3	41.5	13.4	44.5	92.3	158	264	340	345	305	224	178	145	116	130
55	389	378	261	148	87.2	42.0	12.2	45.2	95.4	165	288	378	384	334	236	185	150	119	133
60	425	416	277	152	89.8	42.3	11.0	45.6	98.3	172	310	416	420	362	248	192	153	120	134
65	457	450	291	156	91.8	42.5	10.0	45.9	101	176	328	449	452	387	257	197	156	121	135
70	483	478	301	159	93.5	42.6	9.11	45.9	103	180	343	478	480	408	264	201	157	122	135
75	504	501	309	161	94.8	42.5	8.31	45.9	104	182	355	501	503	425	270	204	159	122	134
80	519	516	314	163	95.6	42.6	7.73	46.1	105	184	363	516	518	436	273	206	159	122	134
85	529	525	318	165	96.4	42.7	7.61	46.1	106	186	367	525	527	442	276	207	159	121	134
90	531	530	319	163	96.5	42.6	7.57	46.0	106	184	368	529	529	446	275	207	159	120	133
95	526	521	318	165	96.5	42.7	7.56	45.9	106	185	365	523	526	442	276	206	158	120	132
100	514	509	314	163	95.5	42.6	7.58	45.8	105	184	359	512	517	435	272	204	157	120	132
105	497	492	308	161	94.4	42.2	7.93	45.2	103	181	350	494	499	422	268	201	155	119	131
110	475	467	300	158	92.9	42.2	8.56	45.2	102	177	337	468	476	404	261	197	153	118	130
115	448	438	289	155	91.0	42.0	9.29	44.8	99.3	173	320	438	447	382	253	192	150	116	129
120	415	404	276	151	88.9	41.6	10.1	44.2	96.8	167	301	405	414	357	243	186	146	114	127
125	378	365	258	146	86.1	41.3	11.1	43.6	93.3	160	279	367	378	329	231	178	142	111	123
130	338	326	239	139	82.9	40.5	12.2	42.6	89.5	152	255	328	339	298	218	170	136	107	119
135	297	285	217	132	79.4	39.7	13.4	41.6	85.1	143	229	288	298	266	203	160	129	102	113
140	256	245	194	124	75.7	39.0	14.8	40.5	80.5	133	202	248	257	234	187	150	120	95.3	107
145	217	207	170	115	71.7	38.2	16.5	39.3	75.4	122	175	210	218	204	170	139	112	86.5	97.6
150	180	172	146	105	68.0	38.0	18.8	38.5	70.6	109	149	174	181	175	152	128	104	78.8	87.4
155	147	140	122	93.7	64.2	38.7	22.4	38.6	65.5	95.8	124	141	148	146	134	116	95.4	73.8	74.8
160	117	111	99.5	80.8	59.2	39.3	26.5	38.7	59.5	81.4	100	112	118	118	114	103	86.4	67.1	60.6
165	90.4	86.3	78.8	66.9	52.5	38.5	29.7	37.4	51.6	66.2	78.3	85.8	91.3	91.4	90.5	85.4	74.3	59.0	45.1
170	66.4	63.5	59.2	52.5	44.1	35.9	31.0	34.4	42.4	50.8	57.9	62.3	67.0	66.5	65.0	59.5	47.6	29.5	17.1
175	32.1	38.7	40.5	38.6	35.4	32.6	30.9	31.5	33.5	36.4	38.5	37.2	26.0	24.7	20.7	13.7	7.12	3.11	0.34
180	90.5	90.5	90.5	90.5	90.5	90.5	90.5	90.5	90.5	90.5	90.5	90.5	90.5	30.4	30.4	30.4	30.4	30.4	30.4

C Range: 0 - 360DEG
 C Interval: 15.0DEG
 Test Speed: HIGH
 Temperature: 24.9DEG
 Operators: Alan Wang
 Test Date: 14 December 2023

γ Range: 0 - 180DEG
 γ Interval: 1.0DEG
 Test System: EVERFINE GO-R5000_V2 SYSTEM V2.00.416
 Humidity: 42.0%
 Test Distance: 2.500m [K=1.0423]
 Remarks:

LUMINOUS DISTRIBUTION INTENSITY DATA

Test:U:120.0V I:0.3431A P:40.26W PF:0.9778 Freq:60.00Hz Lamp Flux:2468.8x1 lm		
NAME:	TYPE:LED	WEIGHT:
SPEC.:ASD-LWS27B-72D40BK_5000K	DIM.:	SERIAL No.:
MFR.: ASD Lighting Corp	SUR.:	Shielding Angle:

Table--2

UNIT: cd

C(DEG) γ (DEG)	285	300	315	330	345														
0	38.6	38.6	38.6	38.6	38.6														
5	48.9	50.0	51.6	52.6	52.3														
10	58.8	64.3	70.8	75.1	75.8														
15	67.5	77.9	89.7	98.2	101														
20	76.2	90.8	107	121	129														
25	85.4	103	123	144	158														
30	93.6	115	139	166	189														
35	101	125	153	188	223														
40	108	134	165	208	259														
45	112	141	176	227	296														
50	116	148	186	244	333														
55	119	153	195	259	369														
60	121	157	202	272	403														
65	122	160	207	283	433														
70	122	162	212	291	458														
75	122	163	215	297	478														
80	122	164	217	300	491														
85	122	164	218	304	501														
90	121	163	217	302	506														
95	120	162	217	303	498														
100	120	160	213	297	485														
105	118	159	210	293	469														
110	117	156	206	284	447														
115	115	152	200	275	421														
120	113	148	193	263	391														
125	110	143	186	250	357														
130	106	137	177	234	321														
135	100	130	167	217	284														
140	94.6	122	155	197	245														
145	86.3	111	141	175	209														
150	78.1	97.8	125	152	175														
155	69.2	83.1	108	129	144														
160	57.9	67.2	85.5	105	115														
165	45.4	50.8	68.2	82.8	89.4														
170	18.1	22.5	40.4	54.3	63.7														
175	0.79	2.03	5.74	11.3	21.6														
180	30.4	30.4	30.4	30.4	30.4														

C Range: 0 - 360DEG
 C Interval: 15.0DEG
 Test Speed: HIGH
 Temperature: 24.9DEG
 Operators: Alan Wang
 Test Date: 14 December 2023

γ Range: 0 - 180DEG
 γ Interval: 1.0DEG
 Test System: EVERFINE GO-R5000_V2 SYSTEM V2.00.416
 Humidity: 42.0%
 Test Distance: 2.500m [K=1.0423]
 Remarks: