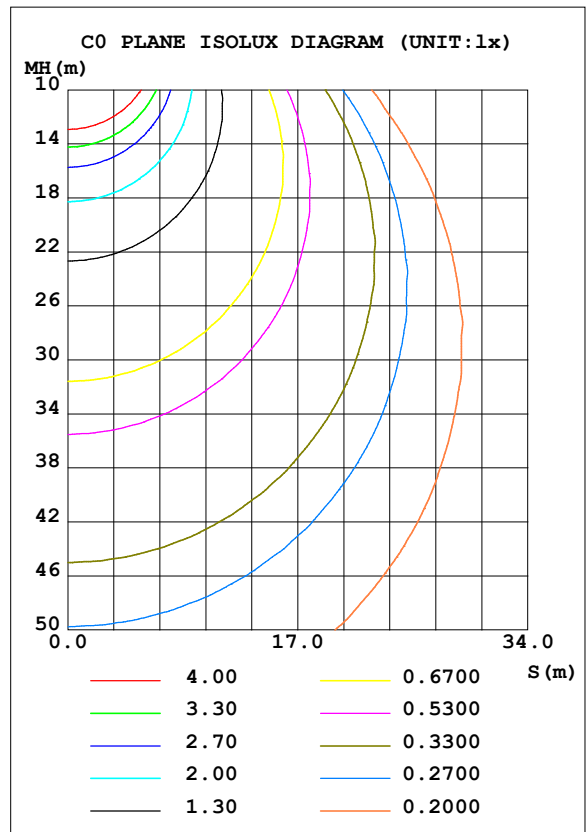
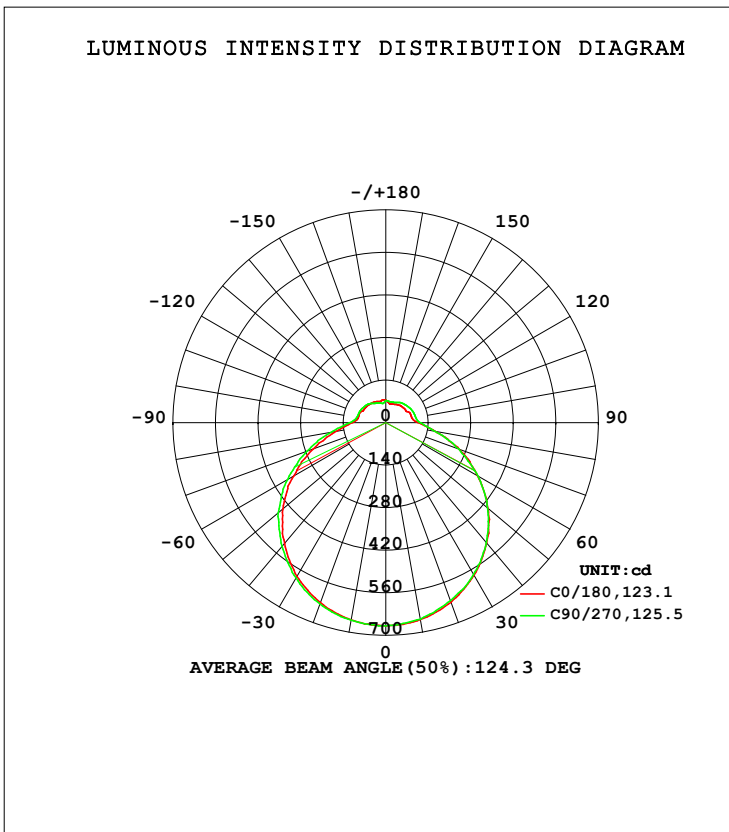


**LUMINAIRE PHOTOMETRIC TEST REPORT**

Test:U:120.20V I:0.3822A P:41.494W PF:0.9022 Freq:50.00Hz Lamp Flux:2818.09x1 lm		
NAME: ASD Lighting Corp	TYPE:	WEIGHT:
SPEC.:ASD-LFC-MY-20D42-AC-2700K	DIM.:	SERIAL No.:
MFR.: ASD Lighting Corp	SUR.:0.5*0.5	Shielding Angle:

DATA OF LAMP		PHOTOMETRIC DATA Eff: 67.92 lm/W			
MODEL	ASD-LFC-MY-20D42-AC	Imax (cd)	669.4	S/MH (C0/180)	1.30
NOMINAL POWER (W)	--	LOR (%)	100.0	S/MH (C90/270)	1.31
RATED VOLTAGE (V)	--	TOTAL FLUX (lm)	2818.1	<input type="checkbox"/> UP, DN (C0-180)	9.5, 39.9
NOMINAL FLUX (lm)	2818.09	CIE CLASS	SEMI-D.	<input type="checkbox"/> UP, DN (C180-360)	9.5, 41.1
LAMPS INSIDE	1	<input type="checkbox"/> up (%)	19.0	CIBSE SHR NOM	1.50
TEST VOLTAGE (V)	--	<input type="checkbox"/> down (%)	81.0	CIBSE SHR MAX	1.50



C Range: 0 - 360DEG  
 C Interval: 22.5DEG  
 Test Speed: HIGH  
 Temperature: 25.3DEG  
 Operators: admin Test  
 Date: 2022-04-15

Range: 0 - 180DEG  
 Interval: 1.0DEG  
 Test System: EVERFINE GO-2000B\_V1 SYSTEM V2.00.411  
 Humidity: 65.0%  
 Test Distance: 8.780m [K=1.0000]  
 Remarks:

**ZONAL FLUX DIAGRAM**

ZONAL FLUX DIAGRAM:

mm	C0	C45	C90	C135	C180	C225	C270	C315	mm	□ zone	□ total	%lum, lamp
10	657.4	655.6	657.1	656.2	658.6	659.7	659.9	659.7	0- 10	63.29	63.29	2.25,2.25
20	628.9	624.3	623.5	625.3	629.9	634.3	634.6	632.5	10- 20	182.4	245.7	8.72,8.72
30	579.9	578.1	577.3	575.8	584.8	588.2	590.4	588.3	20- 30	280.5	526.2	18.7,18.7
40	516.2	516.1	514.8	512.6	518.9	527.4	531.4	527.1	30- 40	346.6	872.8	31,31
50	439.0	438.6	438.0	435.5	441.1	453.6	462.7	452.2	40- 50	373.8	1247	44.2,44.2
60	348.4	349.6	349.2	345.4	350.0	368.7	373.1	362.9	50- 60	359.1	1606	57,57
70	257.6	250.0	256.7	252.0	253.7	266.2	276.6	262.8	60- 70	304.1	1910	67.8,67.8
80	165.1	155.6	163.8	164.4	166.2	170.4	182.3	175.1	70- 80	225.0	2135	75.8,75.8
90	107.0	103.8	114.0	109.9	110.5	107.8	119.3	115.1	80- 90	147.7	2282	81,81
100	88.17	96.59	100.5	88.99	92.71	96.14	97.27	88.88	90-100	109.1	2392	84.9,84.9
110	86.60	93.59	97.80	84.03	92.12	94.44	94.28	82.31	100-110	97.42	2489	88.3,88.3
120	77.79	90.22	94.12	82.94	84.32	92.43	91.61	80.34	110-120	88.01	2577	91.4,91.4
130	76.65	84.13	88.79	74.47	83.30	86.14	87.85	75.76	120-130	75.60	2653	94.1,94.1
140	74.21	74.91	84.22	72.75	80.52	79.76	82.44	67.57	130-140	61.44	2714	96.3,96.3
150	69.53	70.44	76.81	73.10	78.37	74.83	73.56	61.17	140-150	46.31	2760	98,98
160	65.16	67.17	71.78	66.64	74.26	66.98	68.70	61.33	150-160	32.20	2793	99.1,99.1
170	66.12	71.86	71.06	64.50	75.46	69.17	64.71	69.07	160-170	18.82	2811	99.8,99.8
180	75.20	76.79	73.60	72.10	75.12	76.73	73.63	72.11	170-180	6.704	2818	100,100
DEG	LUMINOUS INTENSITY:cd									UNIT:lm		

Conical surface Flux(90deg): 1058.9 lm

%lum = 37.6%

%lamp = 37.6%

Conical surface Flux(120deg): 1605.7 lm

%lum = 57.0%

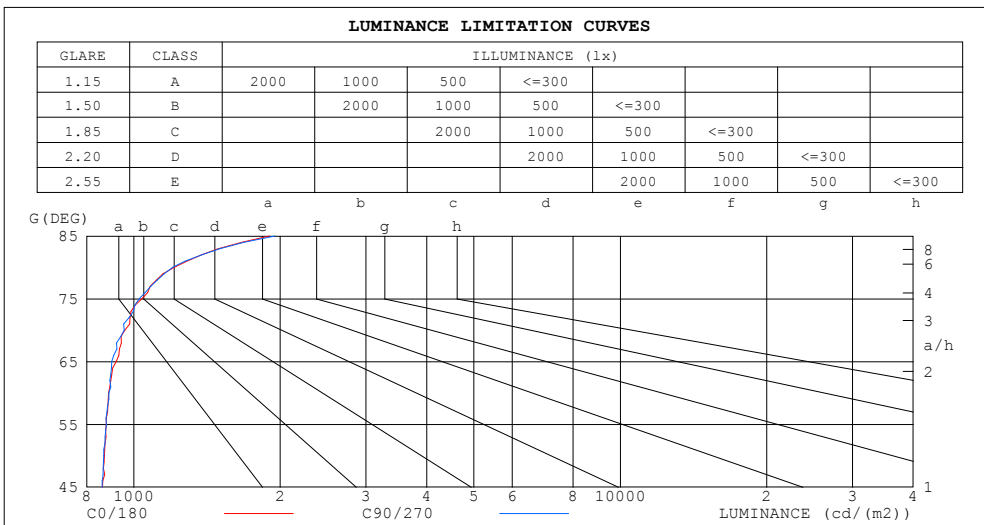
%lamp = 57.0%

C Range: 0 - 360DEG  
 C Interval: 22.5DEG  
 Test Speed: HIGH  
 Temperature:25.3DEG  
 Operators:admin Test  
 Date:2022-04-15

□ Range: 0 - 180DEG  
 □ Interval: 1.0DEG  
 Test System:EVERFINE GO-2000B\_V1 SYSTEM V2.00.411  
 Humidity:65.0%  
 Test Distance:8.780m [K=1.0000]  
 Remarks:

**LUMINANCE LIMITATION CURVES**

Test:U:120.20V I:0.3822A P:41.494W PF:0.9022 Freq:50.00Hz Lamp Flux:2818.09x1 lm		
NAME: ASD Lighting Corp	TYPE:	WEIGHT:
SPEC.:ASD-LFC-MY-20D42-AC-2700K	DIM.:	SERIAL No.:
MFR.: ASD Lighting Corp	SUR.:0.5*0.5	Shielding Angle:



LUMINANCE cd/(m2)		
G (DEG)	C0/180	C90/270
85	1902	1951
80	1210	1201
75	1039	1026
70	959	956
65	921	901
60	887	889
55	878	878
50	870	868
45	862	861

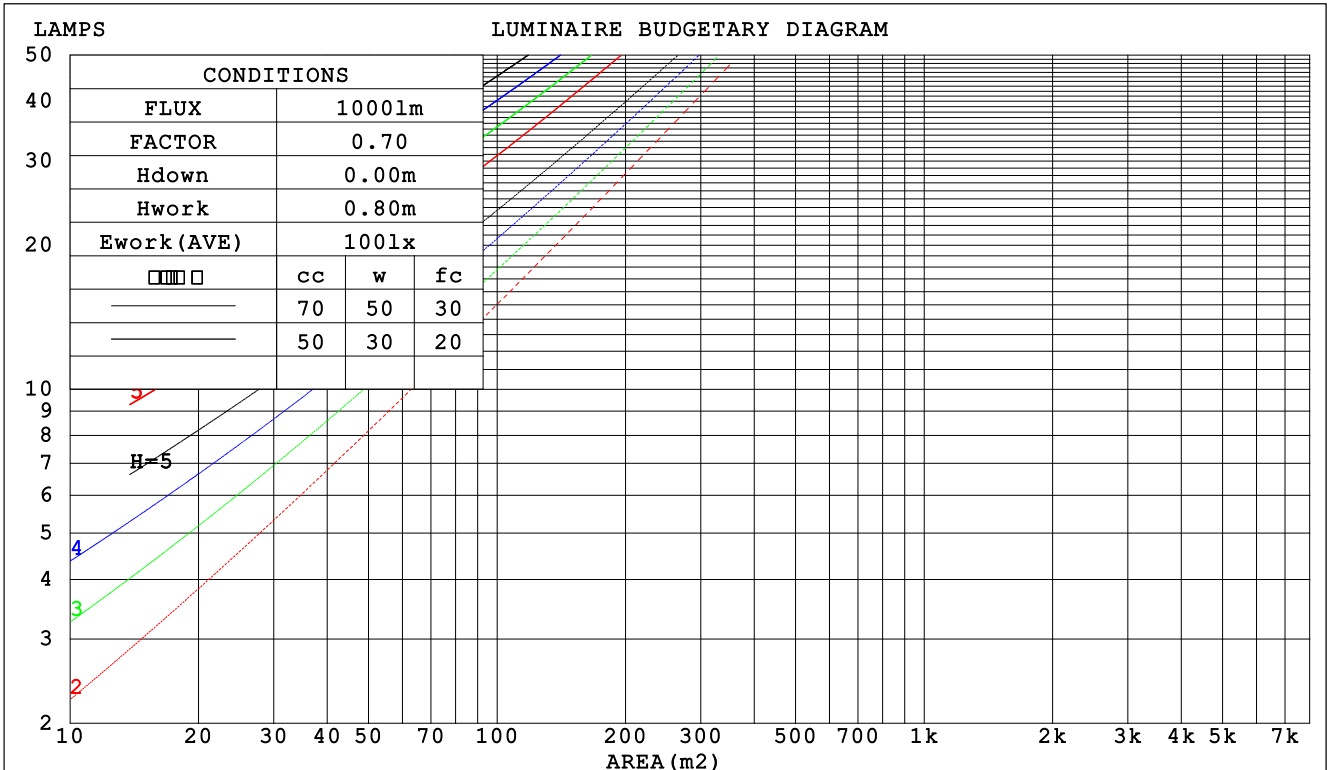
C Range: 0 - 360DEG  
 C Interval: 22.5DEG  
 Test Speed: HIGH  
 Temperature:25.3DEG  
 Operators:admin Test  
 Date:2022-04-15

Range: 0 - 180DEG  
 Interval: 1.0DEG  
 Test System:EVERFINE GO-2000B\_V1 SYSTEM V2.00.411  
 Humidity:65.0%  
 Test Distance:8.780m [K=1.0000]  
 Remarks:

CU AND LUMINAIRE BUDGETARY ESTIMATE DIAGRAM

Test:U:120.20V I:0.3822A P:41.494W PF:0.9022 Freq:50.00Hz Lamp Flux:2818.09x1 lm		
NAME: ASD Lighting Corp	TYPE:	WEIGHT:
SPEC.:ASD-LFC-MY-20D42-AC-2700K	DIM.:	SERIAL No.:
MFR.: ASD Lighting Corp	SUR.:0.5*0.5	Shielding Angle:

□cc	80%			70%			50%			30%			10%			0
□w	50%	30%	10%	50%	30%	10%	50%	30%	10%	50%	30%	10%	50%	30%	10%	0
□fc	20%			20%			20%			20%			20%			0
RCR	RCR:Room Cavity Ratio						Coefficients of Utilization(CU)									
0.0	1.15	1.15	1.15	1.10	1.10	1.10	1.01	1.01	1.01	.92	.92	.92	.85	.85	.85	.81
1.0	.97	.92	.88	.93	.88	.84	.85	.82	.78	.78	.75	.73	.71	.69	.67	.64
2.0	.84	.76	.70	.80	.73	.68	.73	.68	.63	.67	.63	.59	.62	.58	.55	.52
3.0	.73	.64	.57	.70	.62	.56	.64	.58	.52	.59	.53	.49	.54	.49	.46	.43
4.0	.64	.55	.48	.61	.53	.47	.56	.49	.44	.52	.46	.41	.48	.43	.39	.36
5.0	.57	.48	.41	.55	.46	.40	.50	.43	.38	.46	.40	.35	.43	.38	.33	.31
6.0	.51	.42	.35	.49	.41	.34	.45	.38	.33	.42	.36	.31	.39	.33	.29	.27
7.0	.46	.37	.31	.44	.36	.30	.41	.34	.29	.38	.32	.27	.35	.30	.26	.23
8.0	.42	.33	.27	.40	.32	.27	.37	.30	.25	.35	.29	.24	.32	.27	.23	.21
9.0	.38	.30	.24	.37	.29	.24	.34	.28	.23	.32	.26	.22	.30	.24	.21	.19
10.0	.35	.27	.22	.34	.27	.22	.32	.25	.21	.30	.24	.20	.28	.22	.19	.17



C Range: 0 - 360DEG  
 C Interval: 22.5DEG  
 Test Speed: HIGH  
 Temperature:25.3DEG  
 Operators:admin Test  
 Date:2022-04-15

□ Range: 0 - 180DEG  
 □ Interval: 1.0DEG  
 Test System:EVERFINE GO-2000B\_V1 SYSTEM V2.00.411  
 Humidity:65.0%  
 Test Distance:8.780m [K=1.0000]  
 Remarks:

**WEC AND CCEC**

Test:U:120.20V I:0.3822A P:41.494W PF:0.9022 Freq:50.00Hz Lamp Flux:2818.09x1 lm		
NAME: ASD Lighting Corp	TYPE:	WEIGHT:
SPEC.:ASD-LFC-MY-20D42-AC-2700K	DIM.:	SERIAL No.:
MFR.: ASD Lighting Corp	SUR.:0.5*0.5	Shielding Angle:

<input type="checkbox"/> cc	80%			70%			50%			30%			10%			0
<input type="checkbox"/> w	50%	30%	10%	50%	30%	10%	50%	30%	10%	50%	30%	10%	50%	30%	10%	0
<input type="checkbox"/> fc	20%			20%			20%			20%			20%			0
RCR	RCR:Room Cavity Ratio						Wall Exitance Coefficients (WEC)									
0.0																
1.0	.353	.201	.064	.340	.194	.062	.316	.181	.058	.294	.169	.054	.273	.158	.051	
2.0	.314	.172	.053	.302	.166	.051	.280	.156	.048	.260	.146	.046	.241	.137	.043	
3.0	.283	.150	.045	.272	.146	.044	.252	.137	.042	.234	.128	.039	.217	.120	.037	
4.0	.257	.133	.039	.247	.129	.038	.229	.122	.036	.213	.114	.034	.197	.107	.033	
5.0	.235	.120	.035	.226	.116	.034	.210	.109	.032	.195	.103	.031	.180	.096	.029	
6.0	.216	.108	.031	.208	.105	.030	.193	.099	.029	.179	.093	.027	.166	.088	.026	
7.0	.200	.099	.028	.193	.096	.027	.179	.091	.026	.166	.085	.025	.154	.080	.024	
8.0	.186	.091	.026	.179	.088	.025	.167	.083	.024	.155	.079	.023	.144	.074	.022	
9.0	.174	.084	.023	.168	.082	.023	.156	.077	.022	.145	.073	.021	.135	.069	.020	
10.0	.163	.078	.022	.157	.076	.021	.147	.072	.020	.136	.068	.019	.127	.064	.018	

<input type="checkbox"/> cc	80%			70%			50%			30%			10%			0
<input type="checkbox"/> w	50%	30%	10%	50%	30%	10%	50%	30%	10%	50%	30%	10%	50%	30%	10%	0
<input type="checkbox"/> fc	20%			20%			20%			20%			20%			0
RCR	RCR:Room Cavity Ratio						Ceiling Cavity Exitance Coefficients (CCEC)									
0.0	.335	.335	.335	.287	.287	.287	.196	.196	.196	.112	.112	.112	.036	.036	.036	
1.0	.329	.302	.277	.282	.259	.238	.193	.178	.165	.111	.103	.096	.036	.033	.031	
2.0	.322	.279	.242	.276	.240	.209	.189	.166	.146	.109	.097	.086	.035	.031	.028	
3.0	.315	.262	.220	.270	.226	.191	.185	.157	.134	.107	.092	.079	.034	.030	.026	
4.0	.307	.250	.206	.264	.216	.179	.181	.150	.126	.105	.088	.074	.034	.029	.024	
5.0	.300	.240	.195	.257	.207	.170	.177	.145	.120	.103	.085	.071	.033	.028	.023	
6.0	.292	.232	.188	.251	.201	.164	.173	.140	.116	.101	.083	.069	.032	.027	.023	
7.0	.286	.225	.183	.246	.195	.159	.170	.137	.113	.099	.081	.067	.032	.026	.022	
8.0	.279	.220	.179	.240	.190	.156	.166	.134	.111	.097	.079	.066	.031	.026	.022	
9.0	.273	.215	.176	.235	.186	.153	.163	.131	.109	.095	.077	.065	.031	.025	.021	
10.0	.267	.211	.173	.230	.183	.151	.160	.129	.107	.093	.076	.064	.030	.025	.021	

C Range: 0 - 360DEG  
 C Interval: 22.5DEG  
 Test Speed: HIGH  
 Temperature:25.3DEG  
 Operators:admin Test  
 Date:2022-04-15

Range: 0 - 180DEG  
 Interval: 1.0DEG  
 Test System:EVERFINE GO-2000B\_V1 SYSTEM V2.00.411  
 Humidity:65.0%  
 Test Distance:8.780m [K=1.0000]  
 Remarks:

**UGR(Unified Glare Rating) Table**

Test:U:120.20V I:0.3822A P:41.494W PF:0.9022 Freq:50.00Hz Lamp Flux:2818.09x1 lm										
NAME: ASD Lighting Corp					TYPE:			WEIGHT:		
SPEC.:ASD-LFC-MY-20D42-AC-2700K					DIM.:			SERIAL No.:		
MFR.: ASD Lighting Corp					SUR.:0.5*0.5			Shielding Angle:		
ceiling/cavity	0.7	0.7	0.5	0.5	0.3	0.7	0.7	0.5	0.5	0.3
walls	0.5	0.3	0.5	0.3	0.3	0.5	0.3	0.5	0.3	0.3
working plane	0.2	0.2	0.2	0.2	0.2	0.2	0.2	0.2	0.2	0.2
Room dimensions	Viewed crosswise					Viewed endwise				
x = 2H y = 2H	11.2	12.6	11.8	13.1	13.7	11.3	12.6	11.8	13.1	13.7
3H	13.2	14.4	13.7	14.9	15.6	13.1	14.4	13.7	14.9	15.5
4H	14.1	15.3	14.7	15.8	16.5	14.1	15.2	14.7	15.8	16.5
6H	15.1	16.1	15.6	16.7	17.4	15.0	16.1	15.6	16.7	17.4
8H	15.5	16.6	16.1	17.2	17.9	15.5	16.6	16.1	17.2	17.8
12H	16.1	17.1	16.7	17.7	18.4	16.1	17.1	16.7	17.7	18.4
4H 2H	11.9	13.0	12.5	13.6	14.2	11.9	13.0	12.5	13.6	14.2
3H	14.0	15.0	14.6	15.6	16.3	14.0	15.0	14.6	15.6	16.3
4H	15.1	16.0	15.7	16.7	17.4	15.1	16.0	15.7	16.6	17.3
6H	16.2	17.0	16.9	17.7	18.4	16.2	17.0	16.8	17.6	18.4
8H	16.8	17.6	17.5	18.2	19.0	16.8	17.5	17.4	18.2	19.0
12H	17.5	18.2	18.2	18.8	19.6	17.5	18.2	18.1	18.8	19.6
8H 4H	15.5	16.2	16.2	16.9	17.7	15.5	16.2	16.1	16.9	17.7
6H	16.8	17.5	17.5	18.2	19.0	16.8	17.4	17.5	18.1	18.9
8H	17.6	18.1	18.3	18.8	19.7	17.5	18.1	18.2	18.8	19.7
12H	18.4	18.9	19.2	19.7	20.5	18.4	18.9	19.2	19.7	20.5
12H 4H	15.5	16.2	16.2	16.9	17.7	15.5	16.2	16.2	16.9	17.7
6H	17.0	17.5	17.7	18.2	19.1	16.9	17.5	17.6	18.2	19.0
8H	17.8	18.3	18.5	19.0	19.9	17.8	18.3	18.5	19.0	19.9
Variations with the observer position at spacings:										
S = 1.0H	+ 0.1 / - 0.1					+ 0.1 / - 0.1				
1.5H	+ 0.2 / - 0.3					+ 0.2 / - 0.3				
2.0H	+ 0.2 / - 0.4					+ 0.2 / - 0.3				

CIE Pub.117, 2818 lm Total Lamp Luminous Flux Corrected (8log(F/F0) = 3.6)  
 Area: 0.7853 m2

C Range: 0 - 360DEG  
 C Interval: 22.5DEG  
 Test Speed: HIGH  
 Temperature:25.3DEG  
 Operators:admin Test  
 Date:2022-04-15

Range: 0 - 180DEG  
 Interval: 1.0DEG  
 Test System:EVERFINE GO-2000B\_V1 SYSTEM V2.00.411  
 Humidity:65.0%  
 Test Distance:8.780m [K=1.0000]  
 Remarks:

**UTILIZATION FACTORS TABLE**

Test:U:120.20V I:0.3822A P:41.494W PF:0.9022 Freq:50.00Hz Lamp Flux:2818.09x1 lm		
NAME: ASD Lighting Corp	TYPE:	WEIGHT:
SPEC.:ASD-LFC-MY-20D42-AC-2700K	DIM.:	SERIAL No.:
MFR.: ASD Lighting Corp	SUR.:0.5*0.5	Shielding Angle:

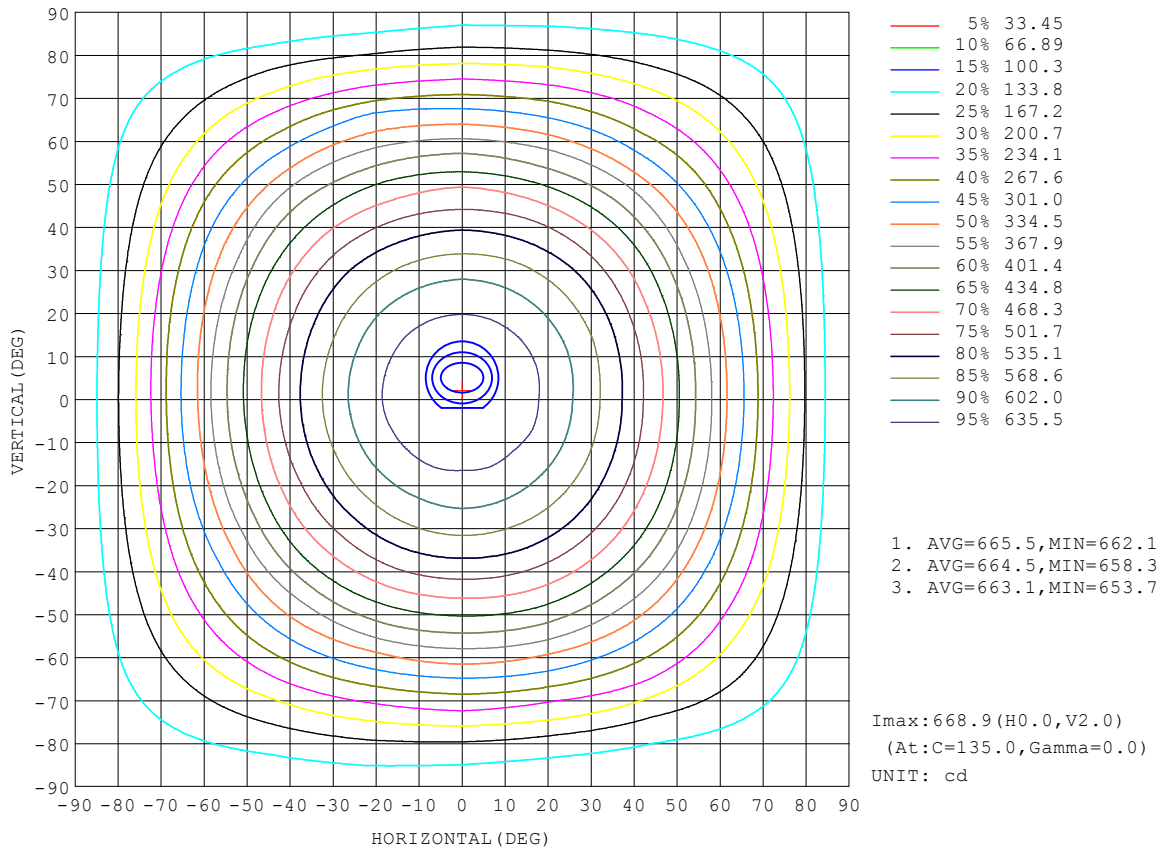
REFLECTANCE										
Ceiling	0.8	0.8	0.8	0.7	0.7	0.7	0.5	0.5	0.5	0
Walls	0.7	0.5	0.3	0.7	0.5	0.3	0.7	0.5	0.3	0
Working plane	0.2	0.2	0.2	0.2	0.2	0.2	0.2	0.2	0.2	0
ROOM INDEX	UTILIZATION FACTORS (PERCENT) $k(RI) \times RCR = 5$									
k = 0.60	49	37	30	48	36	30	46	35	29	22
0.80	59	46	38	57	45	38	54	43	37	29
1.00	66	54	46	64	53	45	61	53	44	35
1.25	73	61	53	71	60	52	66	57	50	41
1.50	79	67	59	76	65	58	71	62	55	45
2.00	86	75	68	83	73	66	77	69	63	51
2.50	90	81	73	87	78	71	80	73	68	55
3.00	94	85	78	90	82	76	83	77	72	58
4.00	98	91	85	94	88	82	87	82	77	63
5.00	101	95	89	97	91	87	89	85	81	65
ROOM INDEX	UF(total)									Direct
According to DIN EN 13032-2 2004			Suspended				SHRNOM = 1.25			

C Range: 0 - 360DEG  
 C Interval: 22.5DEG  
 Test Speed: HIGH  
 Temperature:25.3DEG  
 Operators:admin Test  
 Date:2022-04-15

Range: 0 - 180DEG  
 Interval: 1.0DEG  
 Test System:EVERFINE GO-2000B\_V1 SYSTEM V2.00.411  
 Humidity:65.0%  
 Test Distance:8.780m [K=1.0000]  
 Remarks:

**ISOCANDELA DIAGRAM**

Test:U:120.20V I:0.3822A P:41.494W PF:0.9022 Freq:50.00Hz Lamp Flux:2818.09x1 lm		
NAME: ASD Lighting Corp	TYPE:	WEIGHT:
SPEC.:ASD-LFC-MY-20D42-AC-2700K	DIM.:	SERIAL No.:
MFR.: ASD Lighting Corp	SUR.:0.5*0.5	Shielding Angle:



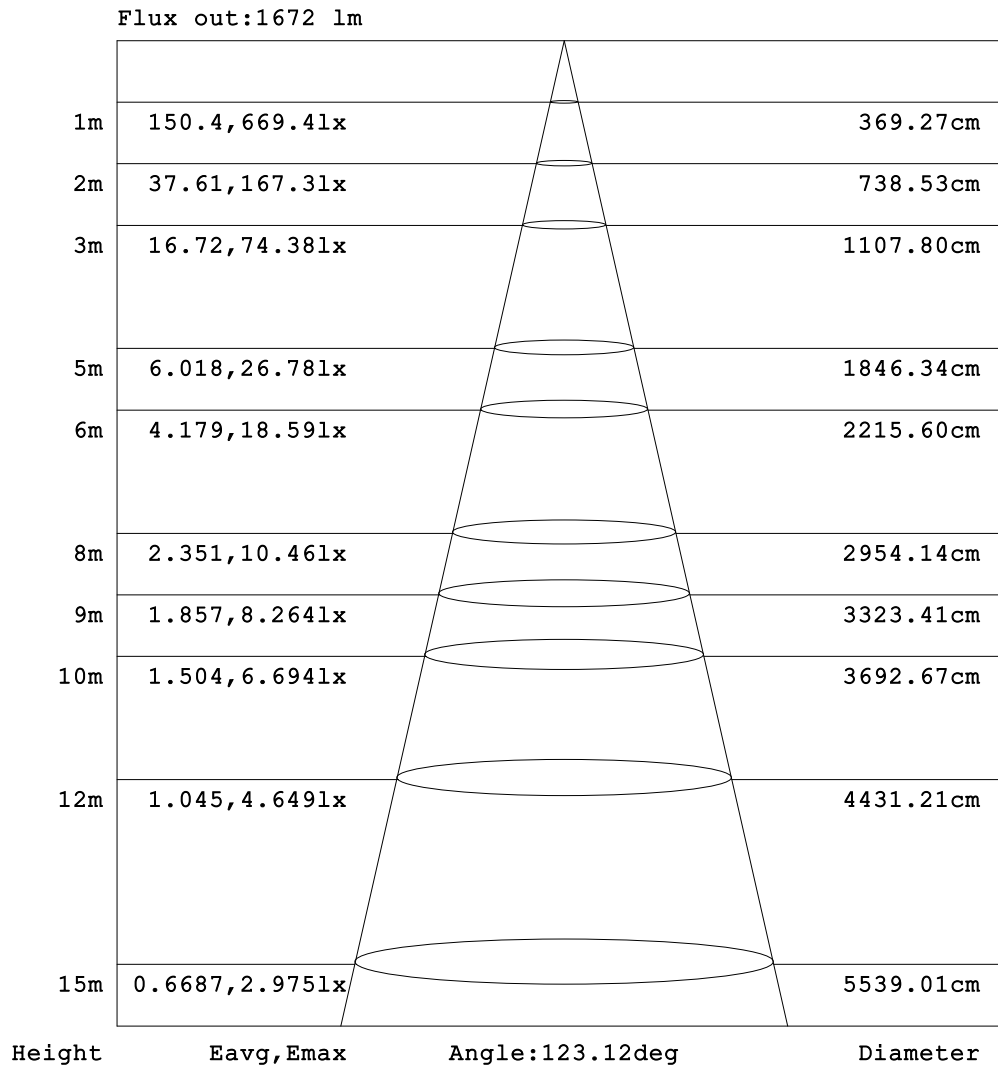
C Range: 0 - 360DEG  
 C Interval: 22.5DEG  
 Test Speed: HIGH  
 Temperature:25.3DEG  
 Operators:admin Test  
 Date:2022-04-15

Range: 0 - 180DEG  
 Interval: 1.0DEG  
 Test System:EVERFINE GO-2000B\_V1 SYSTEM V2.00.411  
 Humidity:65.0%  
 Test Distance:8.780m [K=1.0000]  
 Remarks:



**AAI Figure**

Test:U:120.20V I:0.3822A P:41.494W PF:0.9022 Freq:50.00Hz Lamp Flux:2818.09x1 lm		
NAME: ASD Lighting Corp	TYPE:	WEIGHT:
SPEC.:ASD-LFC-MY-20D42-AC-2700K	DIM.:	SERIAL No.:
MFR.: ASD Lighting Corp	SUR.:0.5*0.5	Shielding Angle:



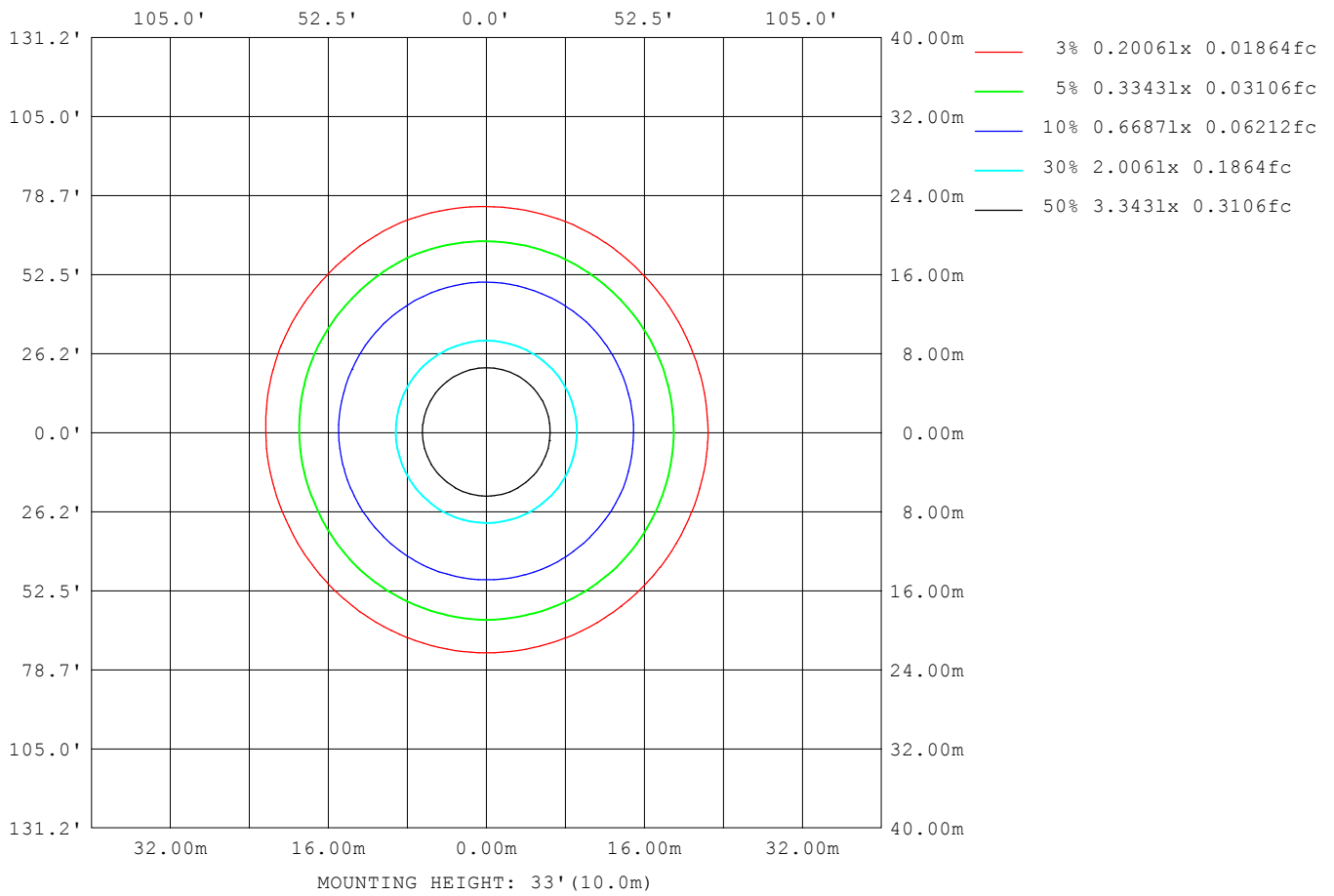
Note:The Curves indicate the illuminated area and the average illumination when the luminaire is at different distance.

C Range: 0 - 360DEG  
 C Interval: 22.5DEG  
 Test Speed: HIGH  
 Temperature:25.3DEG  
 Operators:admin Test  
 Date:2022-04-15

Range: 0 - 180DEG  
 Interval: 1.0DEG  
 Test System:EVERFINE GO-2000B\_V1 SYSTEM V2.00.411  
 Humidity:65.0%  
 Test Distance:8.780m [K=1.0000]  
 Remarks:

**ISOLUX DIAGRAM**

Test:U:120.20V I:0.3822A P:41.494W PF:0.9022 Freq:50.00Hz Lamp Flux:2818.09x1 lm		
NAME: ASD Lighting Corp	TYPE:	WEIGHT:
SPEC.:ASD-LFC-MY-20D42-AC-2700K	DIM.:	SERIAL No.:
MFR.: ASD Lighting Corp	SUR.:0.5*0.5	Shielding Angle:



C Range: 0 - 360DEG  
 C Interval: 22.5DEG  
 Test Speed: HIGH  
 Temperature:25.3DEG  
 Operators:admin Test  
 Date:2022-04-15

Range: 0 - 180DEG  
 Interval: 1.0DEG  
 Test System:EVERFINE GO-2000B\_V1 SYSTEM V2.00.411  
 Humidity:65.0%  
 Test Distance:8.780m [K=1.0000]  
 Remarks:

**LED Avg.L Report**

Test:U:120.20V I:0.3822A P:41.494W PF:0.9022 Freq:50.00Hz Lamp Flux:2818.09x1 lm		
NAME: ASD Lighting Corp	TYPE:	WEIGHT:
SPEC.:ASD-LFC-MY-20D42-AC-2700K	DIM.:	SERIAL No.:
MFR.: ASD Lighting Corp	SUR.:0.5*0.5	Shielding Angle:

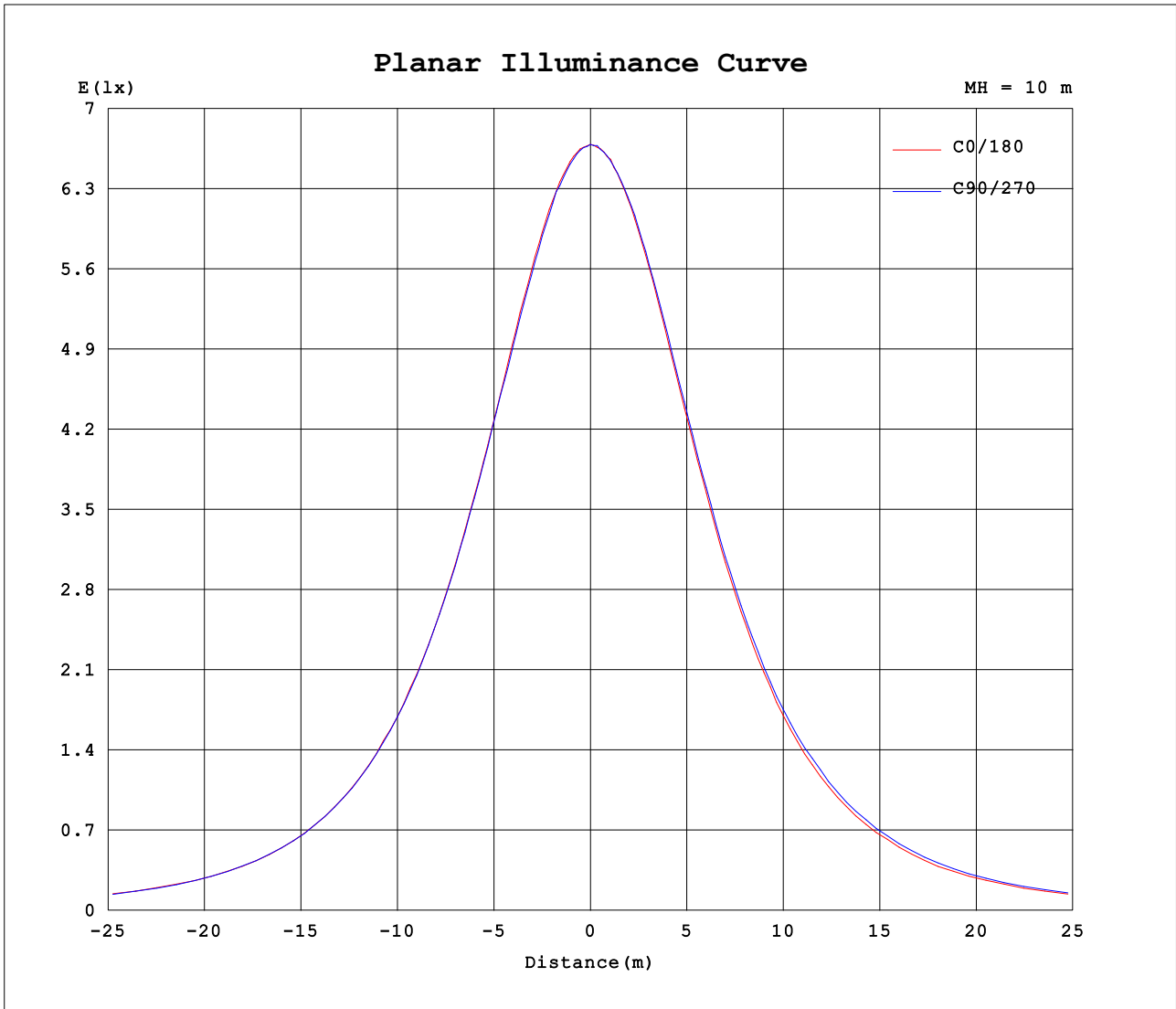
AvgL	cd/m2
L_0~180 (65) av	921
L_0~180 (75) av	1026
L_0~180 (85) av	1925
L_90~270 (65) av	935
L_90~270 (75) av	1083
L_90~270 (85) av	2035
L_45 (65) av	920
L_45 (75) av	1039
L_45 (85) av	1919

Standard: GB/T 29293-2012

C Range: 0 - 360DEG  
 C Interval: 22.5DEG  
 Test Speed: HIGH  
 Temperature:25.3DEG  
 Operators:admin Test  
 Date:2022-04-15

Range: 0 - 180DEG  
 Interval: 1.0DEG  
 Test System:EVERFINE GO-2000B\_V1 SYSTEM V2.00.411  
 Humidity:65.0%  
 Test Distance:8.780m [K=1.0000]  
 Remarks:

Planar Illuminance Curve



C Range: 0 - 360DEG  
 C Interval: 22.5DEG  
 Test Speed: HIGH  
 Temperature:25.3DEG  
 Operators:admin Test  
 Date:2022-04-15

Range: 0 - 180DEG  
 Interval: 1.0DEG  
 Test System:EVERFINE GO-2000B\_V1 SYSTEM V2.00.411  
 Humidity:65.0%  
 Test Distance:8.780m [K=1.0000]  
 Remarks:

LUMINOUS DISTRIBUTION INTENSITY DATA

Test:U:120.20V I:0.3822A P:41.494W PF:0.9022 Freq:50.00Hz Lamp Flux:2818.09x1 lm		
NAME: ASD Lighting Corp	TYPE:	WEIGHT:
SPEC.:ASD-LFC-MY-20D42-AC-2700K	DIM.:	SERIAL No.:
MFR.: ASD Lighting Corp	SUR.:0.5*0.5	Shielding Angle:

Table--1

UNIT: cd

C (DEG) □ (DEG)	0	22.5	45	67.5	90	112.5	135	157.5	180	202.5	225	247.5	270	292.5	315	337.5			
0	669	669	669	669	669	668	669	669	669	669	669	669	669	668	669	669			
5	666	665	665	664	664	665	665	665	666	666	666	666	666	666	667	666			
10	657	657	656	656	657	656	656	656	659	659	660	660	660	659	660	658			
15	645	644	642	642	641	642	643	643	647	647	649	649	650	649	649	648			
20	629	627	624	625	624	625	625	627	630	632	634	634	635	634	633	631			
25	605	605	603	603	604	602	603	607	609	612	613	614	614	615	615	611			
30	580	579	578	578	577	576	576	579	585	585	588	589	590	590	588	585			
35	550	550	550	548	548	547	546	550	553	556	560	560	562	562	561	555			
40	516	518	516	516	515	515	513	513	519	523	527	528	531	529	527	522			
45	479	480	479	482	478	478	476	474	481	486	492	494	496	493	493	485			
50	439	440	439	441	438	437	436	436	441	446	454	458	463	457	452	444			
55	395	395	394	397	396	396	391	393	398	405	413	419	420	411	410	400			
60	348	346	350	349	349	343	345	341	350	363	369	375	373	370	363	352			
65	306	300	299	300	299	296	296	294	306	311	316	331	322	321	310	309			
70	258	251	250	250	257	250	252	254	254	262	266	276	277	274	263	265			
75	211	203	202	206	209	212	204	210	206	212	219	225	232	227	219	214			
80	165	159	156	159	164	167	164	164	166	165	170	176	182	182	175	169			
85	130	126	122	127	134	136	132	132	133	131	131	137	145	144	140	135			
90	107	104	104	109	114	115	110	110	110	109	108	111	119	119	115	110			
95	93.7	93.9	97.6	102	104	102	96.3	96.0	97.8	98.8	98.0	99.7	104	103	98.6	95.0			
100	88.2	91.3	96.6	100	101	96.1	89.0	89.4	92.7	95.9	96.1	96.9	97.3	93.9	88.9	86.8			
105	86.9	90.5	95.4	99.8	99.3	93.4	85.5	87.4	91.9	95.7	95.5	96.0	95.5	90.6	84.5	83.6			
110	86.6	89.6	93.6	98.6	97.8	91.5	84.0	86.2	92.1	95.5	94.4	95.0	94.3	89.5	82.3	82.5			
115	83.7	86.6	91.8	96.8	96.3	90.0	83.5	80.0	89.1	91.2	93.4	93.7	93.3	88.6	81.1	80.5			
120	77.8	83.5	90.2	94.6	94.1	88.2	82.9	77.1	84.3	87.4	92.4	92.2	91.6	87.5	80.3	75.2			
125	77.4	80.9	88.3	92.0	91.4	86.5	80.0	76.4	84.1	86.2	90.9	90.3	89.8	85.9	78.9	70.8			
130	76.7	78.4	84.1	89.4	88.8	84.7	74.5	75.9	83.3	84.7	86.1	87.9	87.9	83.4	75.8	67.8			
135	75.6	75.9	79.2	86.5	86.4	82.4	73.1	74.9	82.1	82.6	82.2	84.6	85.5	81.0	72.1	65.4			
140	74.2	71.9	74.9	81.5	84.2	77.5	72.8	74.7	80.5	81.0	79.8	79.0	82.4	75.9	67.6	63.1			
145	71.9	70.3	71.9	76.1	81.4	74.3	72.7	75.2	79.6	78.6	77.5	73.9	77.8	69.7	63.6	61.5			
150	69.5	69.2	70.4	73.7	76.8	73.7	73.1	72.0	78.4	75.0	74.8	73.8	73.6	67.1	61.2	61.3			
155	67.3	67.4	68.6	70.9	73.7	73.2	70.5	69.7	76.6	71.0	70.8	72.6	71.1	66.2	60.3	60.6			
160	65.2	66.5	67.2	69.3	71.8	72.3	66.6	66.3	74.3	66.7	67.0	70.4	68.7	65.2	61.3	61.0			
165	63.4	64.2	66.2	67.6	70.6	68.9	63.2	63.8	73.0	64.5	63.2	66.9	66.8	63.4	62.6	61.7			
170	66.1	68.3	71.9	70.3	71.1	65.9	64.5	66.4	75.5	70.7	69.2	63.7	64.7	65.5	69.1	67.7			
175	69.8	73.6	73.7	72.3	72.3	68.3	66.6	73.0	76.0	75.5	71.4	71.0	67.1	65.3	70.7	74.5			
180	75.2	76.8	76.8	73.3	73.6	68.2	72.1	76.5	75.1	76.7	76.7	73.3	73.6	68.2	72.1	76.5			

C Range: 0 - 360DEG  
 C Interval: 22.5DEG  
 Test Speed: HIGH  
 Temperature:25.3DEG  
 Operators:admin Test  
 Date:2022-04-15

□ Range: 0 - 180DEG  
 □ Interval: 1.0DEG  
 Test System:EVERFINE GO-2000B\_V1 SYSTEM V2.00.411  
 Humidity:65.0%  
 Test Distance:8.780m [K=1.0000]  
 Remarks: