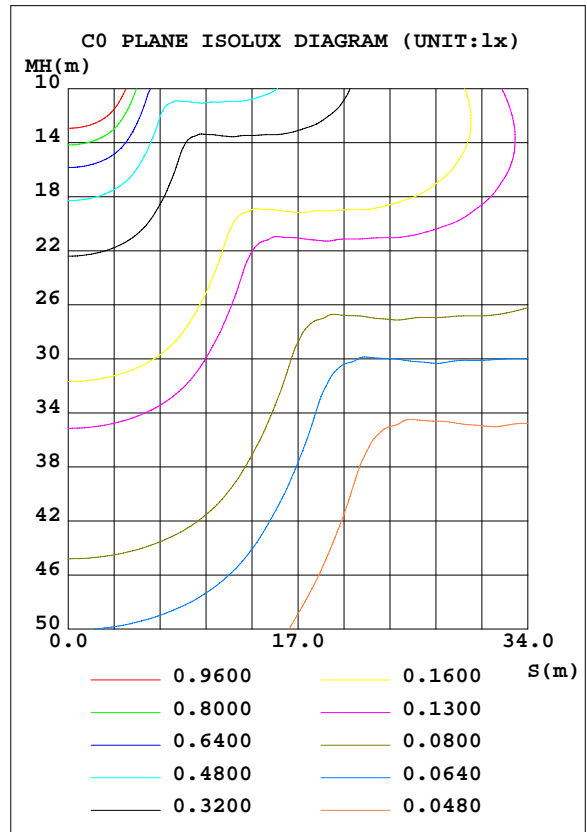
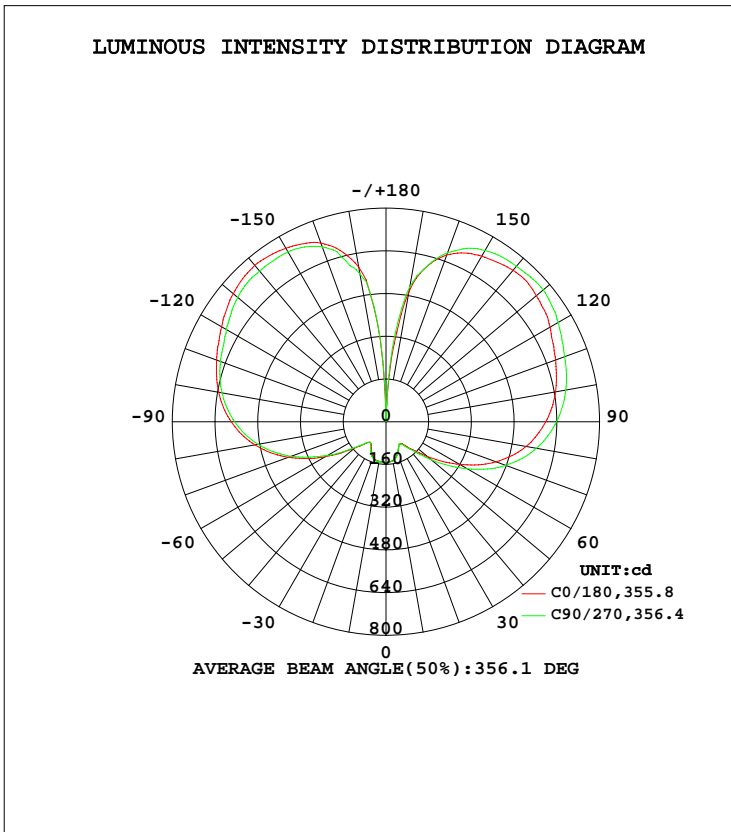


EVERFINE GONIOPHOTOMETERS SYSTEM TEST REPORT

LUMINAIRE PHOTOMETRIC TEST REPORT

Test:U:121.1V I:0.3613A P:49.61W PF:0.9868 Lamp Flux:5774.41x1 lm		

DATA OF LAMP		PHOTOMETRIC DATA Eff: 116.4 lm/W			
Model	ASD-LED-PCR-50N50-EX39	I _{max} (cd)	815.7	S/MH(C0/180)	1.12
NOMINAL POWER(W)	50	LOR(%)	100.0	S/MH(C90/270)	1.14
RATED VOLTAGE(V)	120	TOTAL FLUX(lm)	5774.41	η UP, DN(C0-180)	35.6,16.4
NOMINAL FLUX(lm)	5774.41	CIE CLASS	SEMI-IND.	η UP, DN(C180-360)	33.9,14.1
LAMPS INSIDE	1	η up(%)	69.5	CIBSE SHR NOM	2.00
TEST VOLTAGE(V)	120	η down(%)	30.5	CIBSE SHR MAX	0.00



C Range: 0 - 360DEG
 C Interval: 22.5DEG
 Test Speed: HIGH
 Temperature:25DEG
 Operators:
 Test Date:2017-11-18

γ Range: 0 - 180DEG
 γ Interval: 1.0DEG
 Test System:EVERFINE GO-2000B_V1 SYSTEM V2.0.350
 Humidity:65.0%
 Test Distance:7.850m [K=1.0000]
 Remarks:

EVERFINE GONIOPHOTOMETERS SYSTEM TEST REPORT

ZONAL FLUX DIAGRAM

ZONAL FLUX DIAGRAM:

γ	C0	C45	C90	C135	C180	C225	C270	C315	γ	Φ zone	Φ total	%lum, lamp
10	147.8	145.3	149.4	149.8	150.9	151.9	152.4	151.0	0- 10	14.43	14.43	0.23,0.23
20	126.3	122.1	126.6	130.8	141.6	142.2	145.4	135.1	10- 20	40.43	54.86	0.87,0.87
30	98.92	104.8	98.40	104.9	112.0	116.6	115.0	110.7	20- 30	55.35	110.2	1.75,1.75
40	122.7	129.0	129.6	116.6	100.9	106.9	100.7	111.4	30- 40	67.17	177.4	2.81,2.81
50	203.3	231.5	222.7	196.3	154.4	142.7	148.4	167.5	40- 50	112.9	290.3	4.61,4.61
60	319.9	354.8	352.2	312.8	260.9	255.3	253.5	275.9	50- 60	211.4	501.7	7.96,7.96
70	439.0	473.8	477.6	442.7	389.1	372.3	378.5	393.5	60- 70	344.3	846.0	13.4,13.4
80	533.0	564.7	572.6	545.9	498.5	481.4	486.6	492.2	70- 80	481.5	1328	21.1,21.1
90	598.1	628.3	638.6	618.6	579.7	564.9	566.7	564.1	80- 90	594.4	1922	30.5,30.5
100	644.4	669.6	683.7	669.0	636.0	621.9	623.5	613.7	90-100	673.3	2595	41.2,41.2
110	676.0	696.6	712.2	702.1	674.9	660.6	659.6	646.1	100-110	716.2	3311	52.5,52.5
120	709.5	730.5	744.5	735.1	711.2	691.4	690.7	681.1	110-120	715.3	4027	63.9,63.9
130	734.9	753.9	768.7	759.1	746.2	727.0	725.1	715.8	120-130	673.4	4700	74.6,74.6
140	740.4	755.7	760.1	764.0	764.5	744.8	736.8	722.8	130-140	587.8	5288	83.9,83.9
150	716.5	729.5	740.9	748.5	750.5	745.3	734.7	721.4	140-150	468.1	5756	91.3,91.3
160	664.6	658.7	672.8	687.2	711.8	708.4	696.9	669.4	150-160	330.7	6087	96.6,96.6
170	493.9	483.1	511.8	547.6	588.2	592.4	561.8	512.6	160-170	178.4	6265	99.4,99.4
180	3.423	4.711	4.505	2.647	3.564	4.979	4.786	2.693	170-180	37.02	6302	100,100
DEG	LUMINOUS INTENSITY:cd									UNIT:lm		

Conical surface Flux(90deg): 224.66 lm

%lum = 3.6%
%lamp = 3.6%

Conical surface Flux(120deg): 501.75 lm

%lum = 8.0%
%lamp = 8.0%

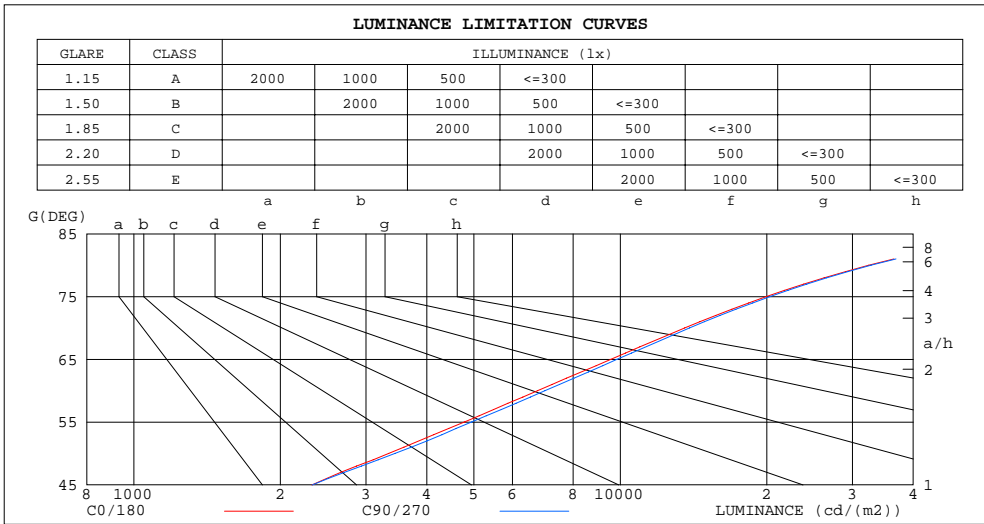
C Range: 0 - 360DEG
C Interval: 22.5DEG
Test Speed: HIGH
Temperature:25DEG
Operators:
Test Date:2017-11-18

γ Range: 0 - 180DEG
γ Interval: 1.0DEG
Test System:EVERFINE GO-2000B_V1 SYSTEM V2.0.350
Humidity:65.0%
Test Distance:7.850m [K=1.0000]
Remarks:

EVERFINE GONIOPHOTOMETERS SYSTEM TEST REPORT

LUMINANCE LIMITATION CURVES

Test:U:121.1V I:0.3613A P:49.61W PF:0.9868 Lamp Flux:5774.41x1 lm		



LUMINANCE cd/(m2)		
G (DEG)	C0/180	C90/270
85	68862	69352
80	32419	32752
75	19965	20306
70	13558	13872
65	9561	9845
60	6758	6998
55	4778	4941
50	3341	3442
45	2323	2326

C Range: 0 - 360DEG
 C Interval: 22.5DEG
 Test Speed: HIGH
 Temperature: 25DEG
 Operators:
 Test Date: 2017-11-18

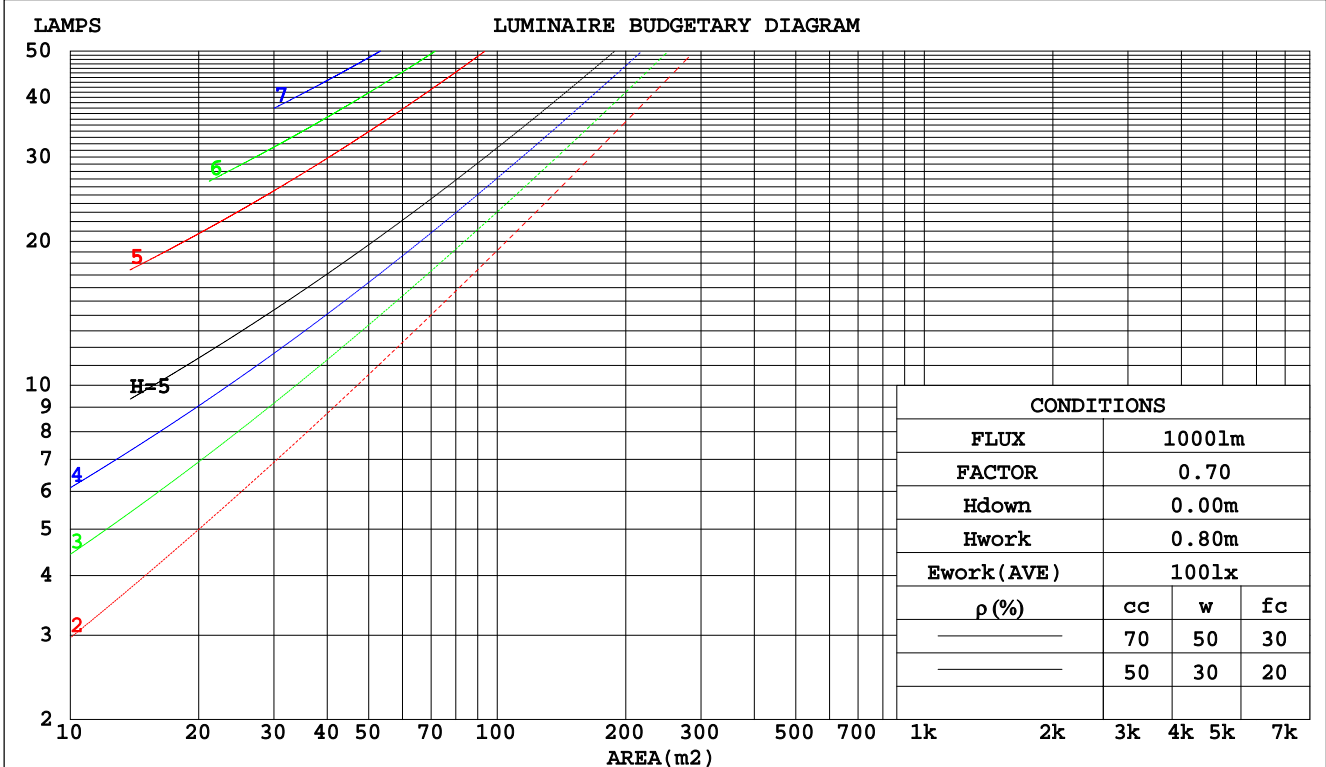
γ Range: 0 - 180DEG
 γ Interval: 1.0DEG
 Test System: EVERFINE GO-2000B_V1 SYSTEM V2.0.350
 Humidity: 65.0%
 Test Distance: 7.850m [K=1.0000]
 Remarks:

EVERFINE GONIOPHOTOMETERS SYSTEM TEST REPORT

CU AND LUMINAIRE BUDGETARY ESTIMATE DIAGRAM

Test:U:121.1V I:0.3613A P:49.61W PF:0.9868 Lamp Flux:5774.41x1 lm		

pcc	80%			70%			50%			30%			10%			0
	50%	30%	10%	50%	30%	10%	50%	30%	10%	50%	30%	10%	50%	30%	10%	0
pw																
pfc																
RCR	RCR:Room Cavity Ratio			Coefficients of Utilization(CU)												
0.0	1.02	1.02	1.02	.92	.92	.92	.72	.72	.72	.55	.55	.55	.38	.38	.38	.30
1.0	.83	.77	.72	.74	.69	.64	.56	.53	.50	.41	.38	.36	.26	.25	.23	.16
2.0	.70	.62	.56	.62	.55	.50	.47	.42	.38	.34	.30	.27	.21	.19	.16	.10
3.0	.60	.51	.45	.53	.46	.40	.40	.35	.30	.29	.25	.21	.17	.15	.12	.07
4.0	.52	.43	.37	.47	.39	.33	.35	.29	.25	.25	.21	.17	.15	.12	.10	.05
5.0	.46	.37	.31	.41	.33	.27	.31	.25	.21	.22	.18	.14	.13	.10	.08	.04
6.0	.41	.32	.26	.36	.29	.23	.28	.22	.18	.20	.15	.12	.12	.09	.07	.03
7.0	.37	.28	.22	.33	.25	.20	.25	.19	.15	.18	.13	.10	.11	.08	.06	.03
8.0	.33	.25	.19	.30	.22	.17	.23	.17	.13	.16	.12	.09	.10	.07	.05	.02
9.0	.30	.22	.17	.27	.20	.15	.21	.15	.12	.15	.11	.08	.09	.06	.04	.02
10.0	.27	.20	.15	.24	.18	.13	.19	.14	.10	.13	.10	.07	.08	.06	.04	.02



C Range: 0 - 360DEG
 C Interval: 22.5DEG
 Test Speed: HIGH
 Temperature: 25DEG
 Operators:
 Test Date: 2017-11-18

γ Range: 0 - 180DEG
 γ Interval: 1.0DEG
 Test System: EVERFINE GO-2000B_V1 SYSTEM V2.0.350
 Humidity: 65.0%
 Test Distance: 7.850m [K=1.0000]
 Remarks:

EVERFINE GONIOPHOTOMETERS SYSTEM TEST REPORT

WEC AND CCEC

Test:U:121.1V I:0.3613A P:49.61W PF:0.9868 Lamp Flux:5774.41x1 lm															

ρcc	80%			70%			50%			30%			10%			0
ρw	50%	30%	10%	50%	30%	10%	50%	30%	10%	50%	30%	10%	50%	30%	10%	0
ρfc	20%			20%			20%			20%			20%			0
RCR	RCR:Room Cavity Ratio						Wall Exitance Coefficients(WEC)									
0.0																
1.0	.398	.226	.072	.370	.211	.067	.316	.182	.058	.268	.154	.050	.223	.129	.042	
2.0	.328	.180	.055	.302	.167	.051	.254	.141	.044	.209	.117	.037	.168	.095	.030	
3.0	.285	.152	.045	.261	.140	.042	.217	.117	.036	.175	.096	.029	.137	.076	.024	
4.0	.253	.132	.039	.231	.121	.036	.190	.101	.030	.152	.082	.025	.117	.064	.019	
5.0	.228	.116	.034	.208	.107	.031	.171	.089	.026	.135	.071	.021	.102	.055	.016	
6.0	.208	.104	.030	.190	.096	.028	.155	.079	.023	.122	.063	.019	.091	.048	.014	
7.0	.191	.095	.027	.174	.087	.025	.142	.072	.021	.111	.057	.017	.083	.043	.013	
8.0	.177	.086	.024	.161	.079	.022	.131	.065	.019	.102	.052	.015	.075	.039	.011	
9.0	.165	.080	.022	.150	.073	.020	.121	.060	.017	.095	.047	.014	.069	.035	.010	
10.0	.154	.074	.020	.140	.068	.019	.113	.055	.016	.088	.044	.012	.064	.032	.009	

ρcc	80%			70%			50%			30%			10%			0
ρw	50%	30%	10%	50%	30%	10%	50%	30%	10%	50%	30%	10%	50%	30%	10%	0
ρfc	20%			20%			20%			20%			20%			0
RCR	RCR:Room Cavity Ratio						Ceiling Cavity Exitance Coefficients(CCEC)									
0.0	.720	.720	.720	.615	.615	.615	.420	.420	.420	.241	.241	.241	.077	.077	.077	
1.0	.720	.689	.661	.616	.592	.569	.422	.407	.394	.243	.236	.229	.078	.076	.074	
2.0	.715	.669	.631	.612	.576	.546	.419	.399	.381	.242	.232	.223	.078	.075	.073	
3.0	.708	.655	.613	.607	.565	.531	.417	.392	.373	.241	.229	.220	.077	.074	.072	
4.0	.701	.644	.600	.601	.556	.522	.413	.388	.367	.239	.227	.217	.077	.074	.071	
5.0	.694	.635	.592	.596	.550	.515	.410	.384	.364	.238	.225	.216	.077	.074	.071	
6.0	.687	.628	.586	.590	.544	.511	.407	.381	.361	.236	.224	.215	.076	.073	.071	
7.0	.680	.622	.582	.585	.539	.507	.404	.378	.359	.235	.223	.214	.076	.073	.071	
8.0	.674	.617	.579	.580	.536	.504	.401	.376	.358	.234	.222	.213	.076	.073	.071	
9.0	.668	.613	.576	.576	.532	.502	.399	.374	.357	.232	.221	.213	.075	.073	.070	
10.0	.663	.610	.574	.572	.529	.501	.396	.372	.356	.231	.220	.212	.075	.072	.070	

C Range: 0 - 360DEG
 C Interval: 22.5DEG
 Test Speed: HIGH
 Temperature:25DEG
 Operators:
 Test Date:2017-11-18

γ Range: 0 - 180DEG
 γ Interval: 1.0DEG
 Test System:EVERFINE GO-2000B_V1 SYSTEM V2.0.350
 Humidity:65.0%
 Test Distance:7.850m [K=1.0000]
 Remarks:

EVERFINE GONIOPHOTOMETERS SYSTEM TEST REPORT

UGR(Unified Glare Rating) Table

Test:U:121.1V I:0.3613A P:49.61W PF:0.9868 Lamp Flux:5774.4lx1 lm										
ceiling/cavity	0.7	0.7	0.5	0.5	0.3	0.7	0.7	0.5	0.5	0.3
walls	0.5	0.3	0.5	0.3	0.3	0.5	0.3	0.5	0.3	0.3
working plane	0.2	0.2	0.2	0.2	0.2	0.2	0.2	0.2	0.2	0.2
Room dimensions	Viewed crosswise					Viewed endwise				
x = 2H y = 2H	13.6	14.5	14.6	15.6	17.0	13.8	14.7	14.8	15.7	17.2
3H	18.3	19.1	19.4	20.2	21.7	18.5	19.3	19.5	20.4	21.9
4H	20.9	21.7	22.0	22.8	24.3	21.0	21.8	22.1	22.9	24.4
6H	23.6	24.4	24.7	25.5	27.0	23.7	24.5	24.8	25.6	27.1
8H	25.1	25.8	26.2	26.9	28.4	25.2	25.9	26.3	27.0	28.5
12H	26.7	27.4	27.8	28.5	30.0	26.8	27.5	27.9	28.6	30.1
4H 2H	15.3	16.0	16.3	17.1	18.6	15.4	16.1	16.4	17.2	18.7
3H	19.7	20.4	20.8	21.5	23.0	19.8	20.5	20.9	21.6	23.1
4H	22.3	22.9	23.4	24.0	25.5	22.4	23.0	23.5	24.1	25.6
6H	25.0	25.6	26.2	26.7	28.3	25.1	25.7	26.2	26.8	28.4
8H	26.6	27.1	27.7	28.2	29.8	26.6	27.1	27.8	28.3	29.8
12H	28.3	28.7	29.4	29.9	31.4	28.3	28.8	29.5	29.9	31.5
8H 4H	23.2	23.7	24.3	24.9	26.4	23.3	23.8	24.4	24.9	26.5
6H	26.2	26.6	27.3	27.7	29.3	26.2	26.7	27.4	27.8	29.4
8H	27.8	28.2	29.0	29.4	30.9	27.9	28.3	29.0	29.4	31.0
12H	29.7	30.0	30.8	31.2	32.8	29.7	30.1	30.9	31.2	32.8
12H 4H	23.5	24.0	24.6	25.1	26.7	23.6	24.0	24.7	25.2	26.8
6H	26.6	27.0	27.7	28.1	29.7	26.6	27.0	27.8	28.2	29.8
8H	28.3	28.7	29.5	29.8	31.4	28.4	28.7	29.5	29.9	31.5
Variations with the observer position at spacings:										
S = 1.0H	+ 0.1 / - 0.1					+ 0.1 / - 0.1				
1.5H	+ 0.2 / - 0.3					+ 0.2 / - 0.3				
2.0H	+ 0.3 / - 0.4					+ 0.3 / - 0.4				

CIE Pub.117 Corrected 6302 lm Total Lamp Luminous Flux.(8log(F/F0) = 6.4)

C Range: 0 - 360DEG
 C Interval: 22.5DEG
 Test Speed: HIGH
 Temperature:25DEG
 Operators:
 Test Date:2017-11-18

γ Range: 0 - 180DEG
 γ Interval: 1.0DEG
 Test System:EVERFINE GO-2000B_V1 SYSTEM V2.0.350
 Humidity:65.0%
 Test Distance:7.850m [K=1.0000]
 Remarks:

EVERFINE GONIOPHOTOMETERS SYSTEM TEST REPORT

UTILIZATION FACTORS TABLE

Test:U:121.1V I:0.3613A P:49.61W PF:0.9868 Lamp Flux:5774.41x1 lm		

REFLECTANCE										
Ceiling	0.8	0.8	0.8	0.7	0.7	0.7	0.5	0.5	0.5	0
Walls	0.7	0.5	0.3	0.7	0.5	0.3	0.7	0.5	0.3	0
Working plane	0.2	0.2	0.2	0.2	0.2	0.2	0.2	0.2	0.2	0
ROOM INDEX	UTILIZATION FACTORS(PERCENT) $k(RI) \times RCR = 5$									
k = 0.60	32	19	13	29	18	12	24	15	10	2
0.80	40	26	18	36	24	16	30	20	14	3
1.00	46	32	23	42	29	21	34	25	17	4
1.25	53	39	29	48	35	27	38	28	21	5
1.50	58	44	34	52	40	31	41	32	25	7
2.00	66	53	43	59	48	39	47	38	31	9
2.50	71	59	49	64	53	45	50	42	35	11
3.00	75	64	55	67	57	49	53	45	39	12
4.00	81	71	63	72	64	56	56	50	45	15
5.00	84	76	68	75	68	61	59	53	48	17
ROOM INDEX	UF(total)									Direct
According to DIN EN 13032-2 2004			Suspended				SHRNOM = 1.25			

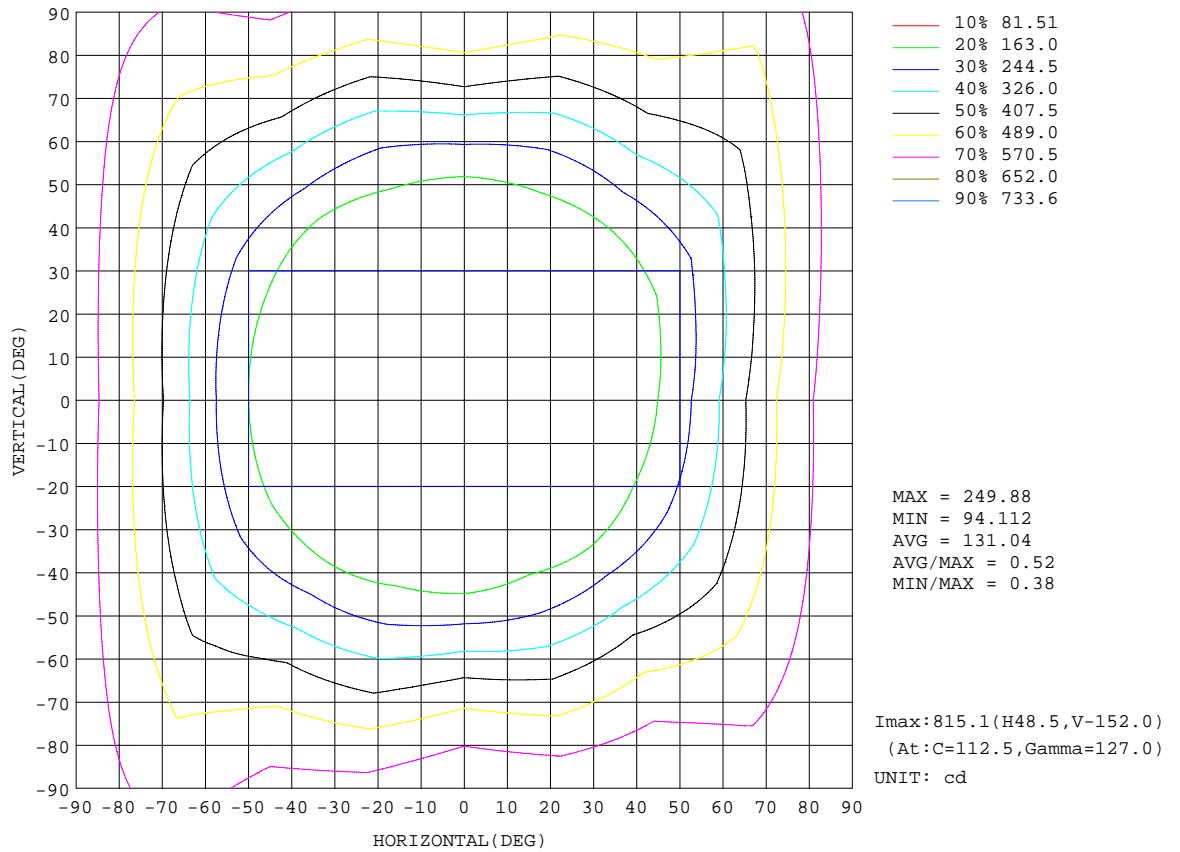
C Range: 0 - 360DEG
 C Interval: 22.5DEG
 Test Speed: HIGH
 Temperature:25DEG
 Operators:
 Test Date:2017-11-18

γ Range: 0 - 180DEG
 γ Interval: 1.0DEG
 Test System:EVERFINE GO-2000B_V1 SYSTEM V2.0.350
 Humidity:65.0%
 Test Distance:7.850m [K=1.0000]
 Remarks:

EVERFINE GONIOPHOTOMETERS SYSTEM TEST REPORT

ISOCANDELA DIAGRAM

Test:U:121.1V I:0.3613A P:49.61W PF:0.9868 Lamp Flux:5774.41x1 lm		



C Range: 0 - 360DEG
 C Interval: 22.5DEG
 Test Speed: HIGH
 Temperature:25DEG
 Operators:
 Test Date:2017-11-18

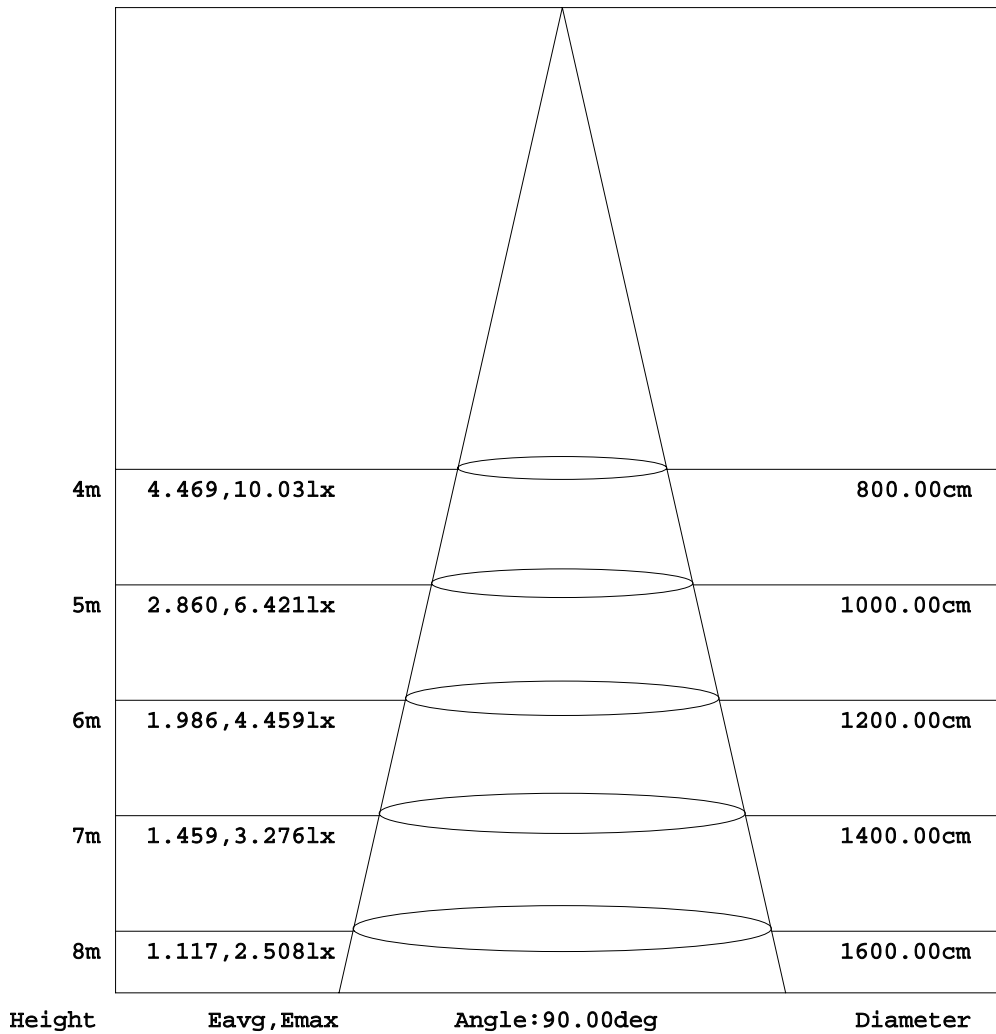
γ Range: 0 - 180DEG
 γ Interval: 1.0DEG
 Test System:EVERFINE GO-2000B_V1 SYSTEM V2.0.350
 Humidity:65.0%
 Test Distance:7.850m [K=1.0000]
 Remarks:

EVERFINE GONIOPHOTOMETERS SYSTEM TEST REPORT

AAI Figure

Test:U:121.1V I:0.3613A P:49.61W PF:0.9868 Lamp Flux:5774.41x1 lm		

Flux out:224.7 lm



Note: The Curves indicate the illuminated area and the average illumination when the luminaire is at different distance.

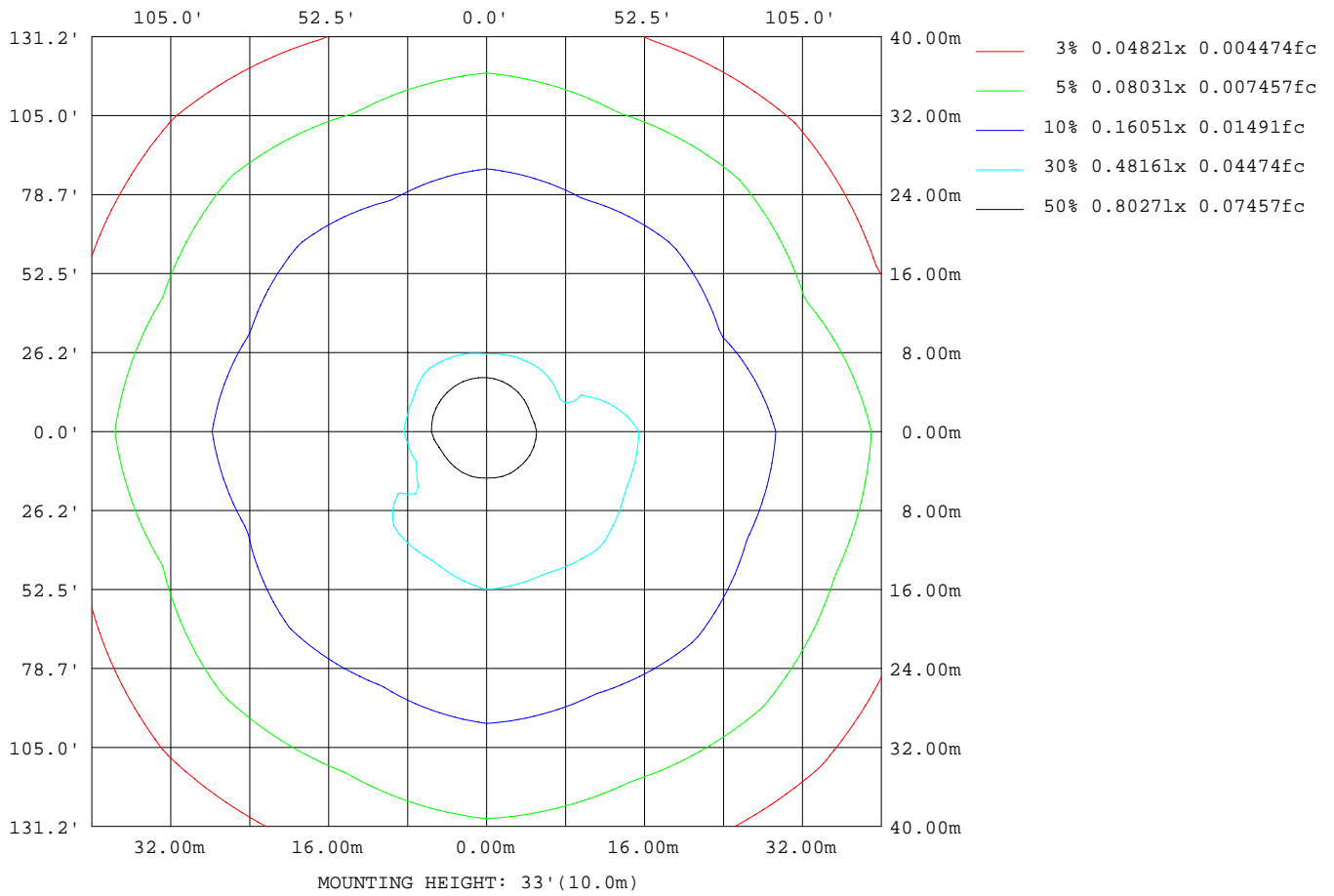
C Range: 0 - 360DEG
 C Interval: 22.5DEG
 Test Speed: HIGH
 Temperature: 25DEG
 Operators:
 Test Date: 2017-11-18

γ Range: 0 - 180DEG
 γ Interval: 1.0DEG
 Test System: EVERFINE GO-2000B_V1 SYSTEM V2.0.350
 Humidity: 65.0%
 Test Distance: 7.850m [K=1.0000]
 Remarks:

EVERFINE GONIOPHOTOMETERS SYSTEM TEST REPORT

ISOLUX DIAGRAM

Test:U:121.1V I:0.3613A P:49.61W PF:0.9868 Lamp Flux:5774.41x1 lm		



C Range: 0 - 360DEG
 C Interval: 22.5DEG
 Test Speed: HIGH
 Temperature: 25DEG
 Operators:
 Test Date: 2017-11-18

γ Range: 0 - 180DEG
 γ Interval: 1.0DEG
 Test System: EVERFINE GO-2000B_V1 SYSTEM V2.0.350
 Humidity: 65.0%
 Test Distance: 7.850m [K=1.0000]
 Remarks:

EVERFINE GONIOPHOTOMETERS SYSTEM TEST REPORT

LED Avg.L Report

Test:U:121.1V I:0.3613A P:49.61W PF:0.9868 Lamp Flux:5774.41x1 lm		

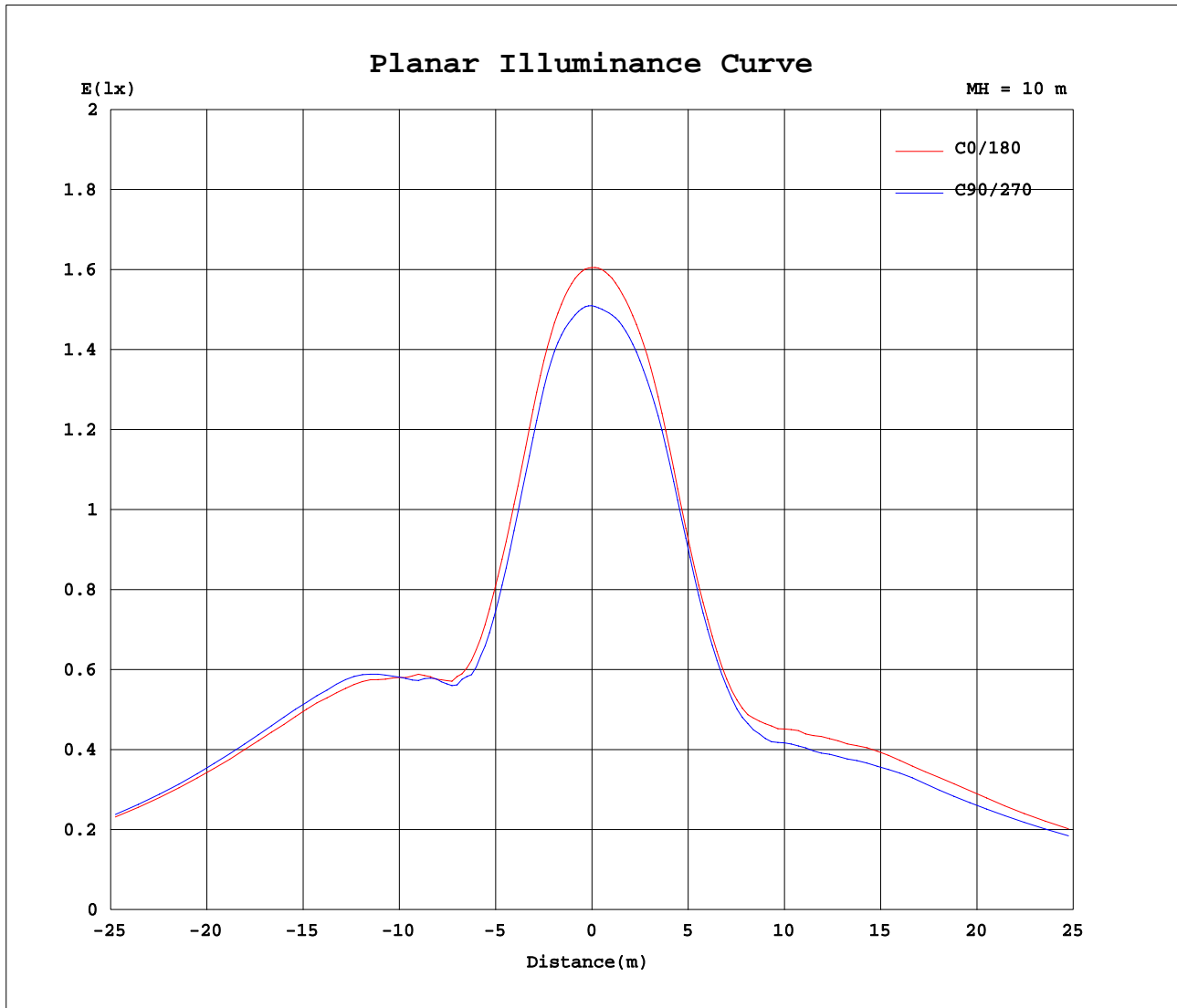
AvgL	cd/m2
L_0~180(65)av	8379
L_0~180(75)av	18105
L_0~180(85)av	63747
L_90~270(65)av	8664
L_90~270(75)av	18645
L_90~270(85)av	65340
L_45(65)av	8567
L_45(75)av	18316
L_45(85)av	64344

Standard: GB/T 29293-2012

C Range: 0 - 360DEG
 C Interval: 22.5DEG
 Test Speed: HIGH
 Temperature:25DEG
 Operators:
 Test Date:2017-11-18

γ Range: 0 - 180DEG
 γ Interval: 1.0DEG
 Test System:EVERFINE GO-2000B_V1 SYSTEM V2.0.350
 Humidity:65.0%
 Test Distance:7.850m [K=1.0000]
 Remarks:

Planar Illuminance Curve



C Range: 0 - 360DEG
 C Interval: 22.5DEG
 Test Speed: HIGH
 Temperature: 25DEG
 Operators:
 Test Date: 2017-11-18

γ Range: 0 - 180DEG
 γ Interval: 1.0DEG
 Test System: EVERFINE GO-2000B_V1 SYSTEM V2.0.350
 Humidity: 65.0%
 Test Distance: 7.850m [K=1.0000]
 Remarks:

EVERFINE GONIOPHOTOMETERS SYSTEM TEST REPORT

LUMINOUS DISTRIBUTION INTENSITY DATA

Test:U:121.1V I:0.3613A P:49.61W PF:0.9868 Lamp Flux:5774.41x1 lm		

Table--1

UNIT: cd

C(DEG) γ (DEG)	0	22.5	45	67.5	90	112.5	135	157.5	180	202.5	225	247.5	270	292.5	315	337.5			
0	152	152	152	152	152	152	152	152	152	152	152	152	152	152	152	152			
5	151	151	151	151	151	152	152	152	152	152	152	152	152	152	152	152			
10	148	146	145	148	149	150	150	151	151	151	152	152	152	152	151	151			
15	140	137	135	138	141	143	143	146	149	150	150	150	151	148	146	145			
20	126	124	122	124	127	129	131	136	142	143	142	144	145	139	135	133			
25	111	112	110	111	110	114	117	122	128	130	130	132	132	126	122	117			
30	98.9	104	105	102	98.4	101	105	109	112	115	117	117	115	113	111	105			
35	100	108	113	109	103	102	107	101	99.3	102	106	106	102	104	106	101			
40	123	131	129	137	130	123	117	110	101	99.4	107	104	101	107	111	112			
45	155	171	171	178	166	165	145	135	121	118	117	119	119	125	130	143			
50	203	213	231	226	223	211	196	178	154	151	143	153	148	163	168	178			
55	259	262	289	280	285	259	257	226	203	190	194	193	196	203	226	222			
60	320	313	355	333	352	313	313	279	261	239	255	238	253	249	276	266			
65	383	368	418	389	419	371	386	330	326	288	308	286	313	298	337	319			
70	439	419	474	441	478	423	443	386	389	344	372	340	379	353	394	369			
75	489	471	523	491	529	476	497	437	448	394	430	391	436	405	447	419			
80	533	517	565	538	573	530	546	489	499	447	481	445	487	456	492	465			
85	568	553	600	581	609	571	585	532	543	496	527	491	530	500	531	505			
90	598	596	628	622	639	613	619	573	580	541	565	529	567	538	564	548			
95	624	638	651	663	664	655	646	621	611	586	596	572	598	577	591	589			
100	644	678	670	704	684	696	669	666	636	629	622	616	623	616	614	628			
105	661	714	684	742	700	734	687	706	657	669	643	657	644	654	632	666			
110	676	743	697	770	712	765	702	739	675	706	661	694	660	689	646	696			
115	691	763	715	789	727	789	718	763	692	735	676	722	672	716	662	714			
120	710	776	730	803	745	806	735	781	711	753	691	743	691	735	681	727			
125	725	782	745	807	758	815	750	793	730	765	710	757	708	749	699	735			
130	735	780	754	804	769	814	759	797	746	771	727	765	725	754	716	737			
135	744	770	756	792	766	804	764	792	759	769	739	764	736	753	721	731			
140	740	756	756	774	760	787	764	781	765	761	745	755	737	743	723	719			
145	729	745	748	758	754	768	760	766	760	749	748	740	736	729	724	707			
150	716	728	729	738	741	749	749	752	751	738	745	725	735	717	721	697			
155	697	711	701	720	717	729	728	737	735	719	732	714	722	698	706	679			
160	665	666	659	678	673	698	687	711	712	701	708	691	697	669	669	656			
165	605	599	589	608	606	632	634	660	665	654	666	652	637	620	594	590			
170	494	487	483	504	512	544	548	582	588	578	592	575	562	539	513	494			
175	240	234	236	251	277	308	346	372	372	381	390	383	375	344	315	290			
180	3.42	4.15	4.71	5.01	4.51	3.70	2.65	3.08	3.56	4.20	4.98	5.01	4.79	3.69	2.69	2.93			

C Range: 0 - 360DEG
 C Interval: 22.5DEG
 Test Speed: HIGH
 Temperature:25DEG
 Operators:
 Test Date:2017-11-18

γ Range: 0 - 180DEG
 γ Interval: 1.0DEG
 Test System:EVERFINE GO-2000B_V1 SYSTEM V2.0.350
 Humidity:65.0%
 Test Distance:7.850m [K=1.0000]
 Remarks: