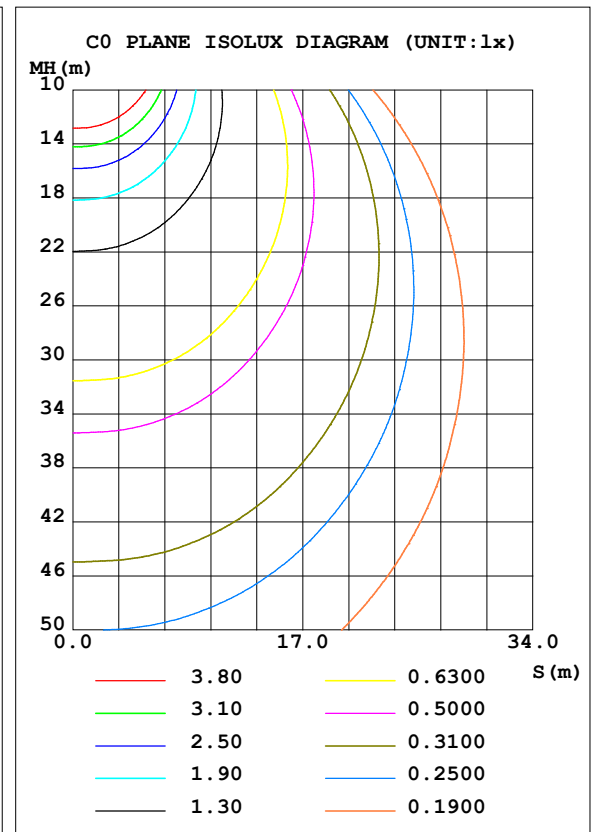
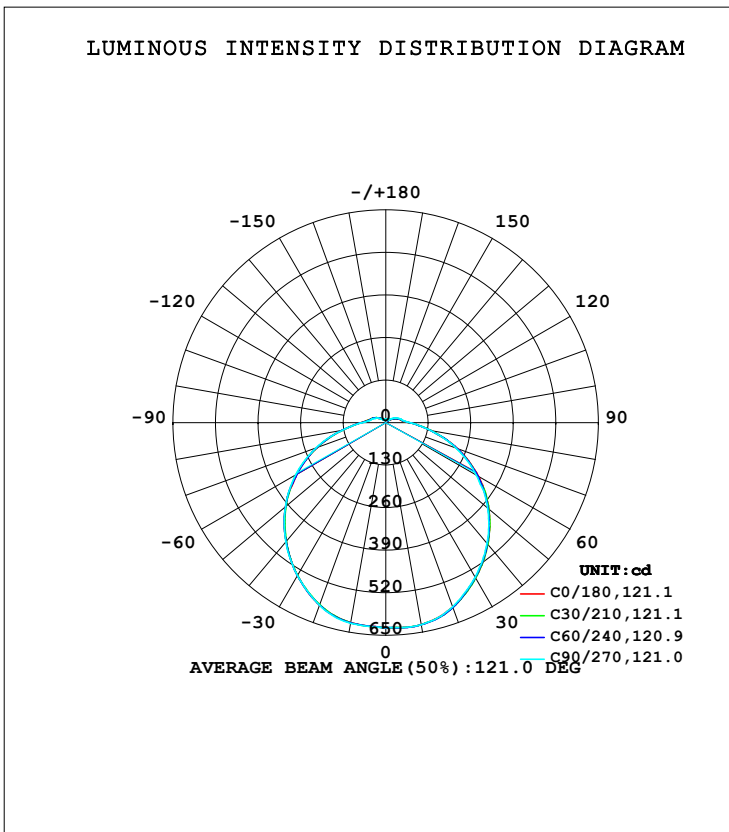


LUMINAIRE PHOTOMETRIC TEST REPORT

Test:U:119.97V I:0.3769A P:40.779W PF:0.9010 Freq:60.00Hz Lamp Flux:2249.95x1 lm		
NAME: ASD lighting Corp	TYPE:	WEIGHT:
SPEC.:ASD-LFC-HN-20D42-AC-3000K	DIM.:	SERIAL No.:
MFR.: ASD lighting Corp	SUR.:0.43*0.39	Shielding Angle:

DATA OF LAMP		PHOTOMETRIC DATA			
MODEL	ASD-LFC-HN-20D42-AC	Imax (cd)	629.1	S/MH (C0/180)	1.28
NOMINAL POWER (W)	--	LOR (%)	100.0	S/MH (C90/270)	1.28
RATED VOLTAGE (V)	--	TOTAL FLUX (lm)	2250.0	<input type="checkbox"/> UP, DN (C0-180)	4.3, 46.0
NOMINAL FLUX (lm)	2249.95	CIE CLASS	DIRECT	<input type="checkbox"/> UP, DN (C180-360)	4.3, 45.5
LAMPS INSIDE	1	<input type="checkbox"/> up (%)	8.5	CIBSE SHR NOM	1.50
TEST VOLTAGE (V)	--	<input type="checkbox"/> down (%)	91.5	CIBSE SHR MAX	1.50



C Range: 0 - 360DEG
 C Interval: 30.0DEG
 Test Speed: HIGH
 Temperature: 25.3DEG
 Operators: admin
 Test Date: 2022-03-16

Range: 0 - 180DEG
 Interval: 1.0DEG
 Test System: EVERFINE GO-2000B_V1 SYSTEM V2.00.411
 Humidity: 65.0%
 Test Distance: 8.780m [K=1.0000]
 Remarks:

ZONAL FLUX DIAGRAM

ZONAL FLUX DIAGRAM:

mm	C0	C45	C90	C135	C180	C225	C270	C315	mm	□ zone	□ total	%lum,lamp
10	626.4	626.9	626.4	621.9	620.4	620.9	622.5	622.7	0- 10	59.65	59.65	2.65,2.65
20	599.4	600.8	598.6	593.2	593.0	592.3	593.7	594.6	10- 20	173.1	232.8	10.3,10.3
30	548.3	547.8	545.5	541.4	540.0	539.7	540.0	542.2	20- 30	263.2	496.0	22,22
40	484.7	484.2	481.8	475.9	474.4	473.6	475.5	479.4	30- 40	320.6	816.6	36.3,36.3
50	410.9	410.3	406.8	402.9	400.3	399.1	400.5	405.1	40- 50	341.7	1158	51.5,51.5
60	326.9	323.7	319.3	317.5	312.6	314.3	317.8	320.3	50- 60	324.5	1483	65.9,65.9
70	233.4	232.2	229.4	227.1	223.4	224.4	227.3	229.5	60- 70	271.4	1754	78,78
80	139.5	139.4	138.1	137.1	135.7	135.7	135.4	138.0	70- 80	192.3	1947	86.5,86.5
90	71.07	72.21	74.60	76.69	75.65	74.00	71.38	71.04	80- 90	111.4	2058	91.5,91.5
100	48.41	49.70	50.84	53.07	52.47	50.83	47.99	47.11	90-100	64.70	2123	94.3,94.3
110	36.76	37.63	40.15	42.50	42.46	41.39	38.55	36.65	100-110	47.58	2170	96.5,96.5
120	22.04	25.15	27.37	30.94	27.73	30.51	27.69	25.38	110-120	33.30	2204	97.9,97.9
130	13.61	15.37	17.24	20.45	18.94	20.48	18.02	16.12	120-130	20.11	2224	98.8,98.8
140	9.279	9.361	10.58	13.12	12.71	13.25	11.34	9.799	130-140	11.03	2235	99.3,99.3
150	9.809	9.732	9.988	10.05	9.454	9.387	9.329	9.131	140-150	6.301	2241	99.6,99.6
160	10.98	10.81	11.07	11.12	10.83	10.39	10.80	10.42	150-160	4.698	2246	99.8,99.8
170	11.18	11.10	11.56	11.37	11.34	11.35	11.57	11.15	160-170	3.157	2249	100,100
180	10.53	10.43	10.54	10.33	10.53	10.43	10.55	10.33	170-180	1.039	2250	100,100
DEG	LUMINOUS INTENSITY:cd									UNIT:lm		

Conical surface Flux(90deg): 987.18 lm

%lum = 43.9%

%lamp = 43.9%

Conical surface Flux(120deg): 1482.9 lm

%lum = 65.9%

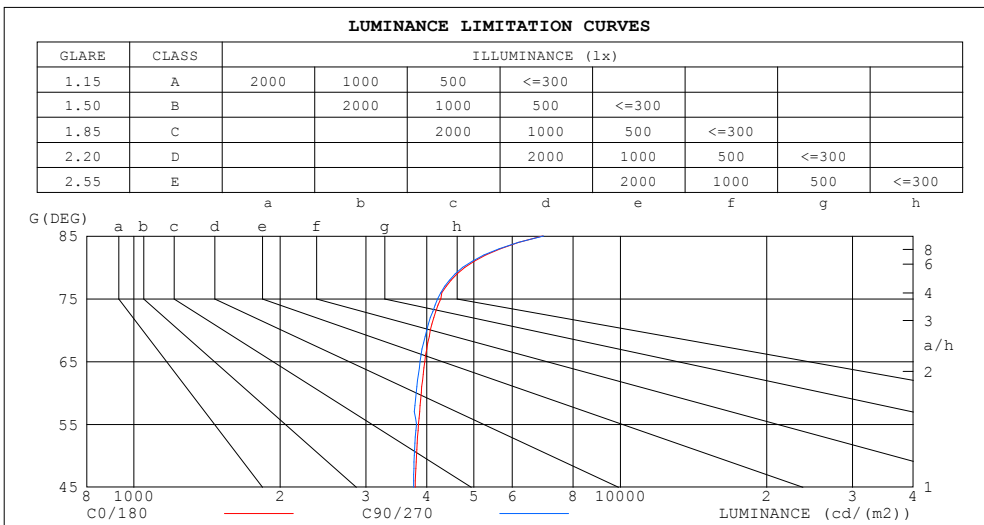
%lamp = 65.9%

C Range: 0 - 360DEG
 C Interval: 30.0DEG
 Test Speed: HIGH
 Temperature:25.3DEG
 Operators:admin
 Test Date:2022-03-16

□ Range: 0 - 180DEG
 □ Interval: 1.0DEG
 Test System:EVERFINE GO-2000B_V1 SYSTEM V2.00.411
 Humidity:65.0%
 Test Distance:8.780m [K=1.0000]
 Remarks:

LUMINANCE LIMITATION CURVES

Test:U:119.97V I:0.3769A P:40.779W PF:0.9010 Freq:60.00Hz Lamp Flux:2249.95x1 lm		
NAME: ASD lighting Corp	TYPE:	WEIGHT:
SPEC.:ASD-LFC-HN-20D42-AC-3000K	DIM.:	SERIAL No.:
MFR.: ASD lighting Corp	SUR.:0.43*0.39	Shielding Angle:



LUMINANCE cd/(m2)		
G (DEG)	C0/180	C90/270
85	6926	6952
80	4789	4741
75	4278	4215
70	4070	4000
65	3964	3876
60	3898	3808
55	3849	3811
50	3812	3774
45	3789	3758

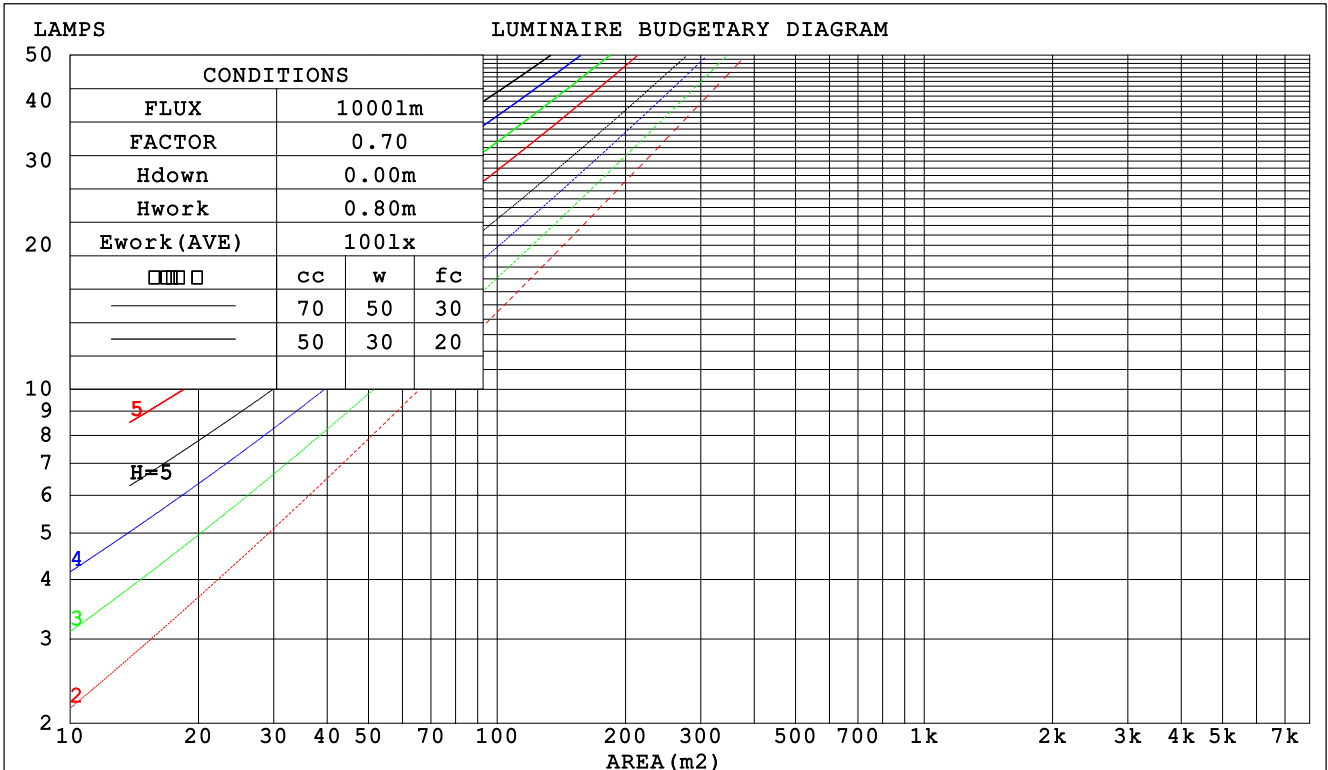
C Range: 0 - 360DEG
 C Interval: 30.0DEG
 Test Speed: HIGH
 Temperature:25.3DEG
 Operators:admin
 Test Date:2022-03-16

Range: 0 - 180DEG
 Interval: 1.0DEG
 Test System:EVERFINE GO-2000B_V1 SYSTEM V2.00.411
 Humidity:65.0%
 Test Distance:8.780m [K=1.0000]
 Remarks:

CU AND LUMINAIRE BUDGETARY ESTIMATE DIAGRAM

Test:U:119.97V I:0.3769A P:40.779W PF:0.9010 Freq:60.00Hz Lamp Flux:2249.95x1 lm		
NAME: ASD lighting Corp	TYPE:	WEIGHT:
SPEC.:ASD-LFC-HN-20D42-AC-3000K	DIM.:	SERIAL No.:
MFR.: ASD lighting Corp	SUR.:0.43*0.39	Shielding Angle:

□cc	80%			70%			50%			30%			10%			0
□w	50%	30%	10%	50%	30%	10%	50%	30%	10%	50%	30%	10%	50%	30%	10%	0
□fc	20%			20%			20%			20%			20%			0
RCR	RCR:Room Cavity Ratio						Coefficients of Utilization(CU)									
0.0	1.17	1.17	1.17	1.13	1.13	1.13	1.06	1.06	1.06	1.00	1.00	1.00	.94	.94	.94	.91
1.0	.00	.95	.90	.96	.92	.88	.91	.87	.84	.85	.82	.80	.80	.78	.76	.73
2.0	.86	.78	.72	.83	.76	.71	.78	.73	.68	.74	.69	.65	.69	.66	.62	.59
3.0	.75	.66	.59	.73	.65	.58	.68	.62	.56	.64	.59	.54	.61	.56	.52	.49
4.0	.66	.57	.50	.64	.56	.49	.60	.53	.47	.57	.51	.46	.54	.49	.44	.42
5.0	.59	.49	.42	.57	.48	.42	.54	.46	.41	.51	.44	.39	.48	.43	.38	.36
6.0	.53	.43	.37	.51	.43	.36	.49	.41	.35	.46	.39	.34	.44	.38	.33	.31
7.0	.48	.39	.32	.46	.38	.32	.44	.37	.31	.42	.35	.30	.40	.34	.30	.27
8.0	.43	.35	.29	.42	.34	.28	.40	.33	.28	.38	.32	.27	.37	.31	.26	.24
9.0	.40	.31	.26	.39	.31	.25	.37	.30	.25	.35	.29	.24	.34	.28	.24	.22
10.0	.37	.29	.23	.36	.28	.23	.34	.27	.22	.33	.26	.22	.31	.26	.22	.20



C Range: 0 - 360DEG
 C Interval: 30.0DEG
 Test Speed: HIGH
 Temperature:25.3DEG
 Operators:admin
 Test Date:2022-03-16

□ Range: 0 - 180DEG
 □ Interval: 1.0DEG
 Test System:EVERFINE GO-2000B_V1 SYSTEM V2.00.411
 Humidity:65.0%
 Test Distance:8.780m [K=1.0000]
 Remarks:

WEC AND CCEC

Test:U:119.97V I:0.3769A P:40.779W PF:0.9010 Freq:60.00Hz Lamp Flux:2249.95x1 lm		
NAME: ASD lighting Corp	TYPE:	WEIGHT:
SPEC.:ASD-LFC-HN-20D42-AC-3000K	DIM.:	SERIAL No.:
MFR.: ASD lighting Corp	SUR.:0.43*0.39	Shielding Angle:

<input type="checkbox"/> cc	80%	70%	50%	30%	10%	0
<input type="checkbox"/> w	50% 30% 10%	50% 30% 10%	50% 30% 10%	50% 30% 10%	50% 30% 10%	0
<input type="checkbox"/> fc	20%	20%	20%	20%	20%	0
RCR	RCR:Room Cavity Ratio		Wall Exitance Coefficients (WEC)			
0.0						
1.0	.352 .200 .063	.343 .195 .062	.324 .186 .059	.307 .177 .057	.292 .169 .055	
2.0	.316 .173 .053	.307 .169 .052	.291 .162 .050	.276 .155 .048	.262 .148 .047	
3.0	.286 .152 .046	.278 .149 .045	.263 .143 .043	.249 .137 .042	.237 .131 .041	
4.0	.260 .135 .040	.253 .132 .039	.240 .127 .038	.227 .122 .037	.216 .117 .036	
5.0	.238 .121 .035	.232 .119 .035	.220 .114 .034	.209 .110 .033	.198 .106 .032	
6.0	.219 .110 .031	.213 .108 .031	.203 .104 .030	.193 .100 .029	.183 .096 .029	
7.0	.203 .100 .028	.198 .098 .028	.188 .095 .027	.179 .092 .027	.170 .088 .026	
8.0	.189 .092 .026	.184 .091 .026	.175 .087 .025	.167 .084 .024	.159 .082 .024	
9.0	.176 .085 .024	.172 .084 .024	.164 .081 .023	.156 .078 .022	.149 .076 .022	
10.0	.165 .079 .022	.161 .078 .022	.154 .075 .021	.147 .073 .021	.140 .071 .020	

<input type="checkbox"/> cc	80%	70%	50%	30%	10%	0
<input type="checkbox"/> w	50% 30% 10%	50% 30% 10%	50% 30% 10%	50% 30% 10%	50% 30% 10%	0
<input type="checkbox"/> fc	20%	20%	20%	20%	20%	0
RCR	RCR:Room Cavity Ratio		Ceiling Cavity Exitance Coefficients (CCEC)			
0.0	.255 .255 .255	.218 .218 .218	.149 .149 .149	.086 .086 .086	.027 .027 .027	
1.0	.249 .221 .197	.213 .190 .169	.146 .131 .117	.084 .076 .068	.027 .024 .022	
2.0	.241 .198 .161	.207 .170 .139	.142 .118 .097	.082 .069 .057	.026 .022 .019	
3.0	.234 .181 .138	.200 .156 .120	.138 .108 .084	.079 .063 .050	.026 .021 .016	
4.0	.226 .168 .123	.194 .145 .107	.133 .101 .075	.077 .059 .045	.025 .019 .015	
5.0	.218 .158 .113	.188 .136 .098	.129 .095 .069	.075 .056 .041	.024 .018 .014	
6.0	.211 .150 .105	.181 .130 .092	.125 .091 .065	.073 .053 .039	.023 .017 .013	
7.0	.204 .143 .100	.176 .124 .087	.121 .087 .062	.070 .051 .037	.023 .017 .012	
8.0	.198 .137 .096	.170 .119 .083	.118 .084 .059	.068 .049 .035	.022 .016 .012	
9.0	.191 .132 .092	.165 .115 .081	.114 .081 .057	.067 .048 .034	.022 .016 .011	
10.0	.185 .128 .090	.160 .111 .078	.111 .078 .056	.065 .046 .033	.021 .015 .011	

C Range: 0 - 360DEG
 C Interval: 30.0DEG
 Test Speed: HIGH
 Temperature:25.3DEG
 Operators:admin
 Test Date:2022-03-16

Range: 0 - 180DEG
 Interval: 1.0DEG
 Test System:EVERFINE GO-2000B_V1 SYSTEM V2.00.411
 Humidity:65.0%
 Test Distance:8.780m [K=1.0000]
 Remarks:

UGR(Unified Glare Rating) Table

Test:U:119.97V I:0.3769A P:40.779W PF:0.9010 Freq:60.00Hz Lamp Flux:2249.95x1 lm										
NAME: ASD lighting Corp					TYPE:			WEIGHT:		
SPEC.:ASD-LFC-HN-20D42-AC-3000K					DIM.:			SERIAL No.:		
MFR.: ASD lighting Corp					SUR.:0.43*0.39			Shielding Angle:		
ceiling/cavity	0.7	0.7	0.5	0.5	0.3	0.7	0.7	0.5	0.5	0.3
walls	0.5	0.3	0.5	0.3	0.3	0.5	0.3	0.5	0.3	0.3
working plane	0.2	0.2	0.2	0.2	0.2	0.2	0.2	0.2	0.2	0.2
Room dimensions	Viewed crosswise					Viewed endwise				
x = 2H y = 2H	17.1	18.6	17.5	18.9	19.3	17.1	18.5	17.4	18.9	19.2
3H	19.0	20.4	19.4	20.7	21.2	18.9	20.3	19.4	20.7	21.1
4H	19.9	21.2	20.3	21.6	22.0	19.8	21.1	20.3	21.5	22.0
6H	20.7	22.0	21.2	22.4	22.8	20.7	21.9	21.1	22.3	22.8
8H	21.2	22.3	21.6	22.8	23.2	21.1	22.3	21.6	22.7	23.2
12H	21.6	22.7	22.1	23.2	23.7	21.5	22.7	22.0	23.1	23.6
4H 2H	17.8	19.1	18.2	19.5	19.9	17.7	19.0	18.2	19.4	19.9
3H	19.9	21.0	20.4	21.5	21.9	19.8	21.0	20.3	21.4	21.9
4H	20.9	22.0	21.4	22.4	23.0	20.9	21.9	21.4	22.4	22.9
6H	21.9	22.9	22.5	23.4	23.9	21.9	22.8	22.4	23.3	23.9
8H	22.5	23.3	23.0	23.8	24.4	22.4	23.3	22.9	23.8	24.3
12H	23.0	23.8	23.6	24.3	24.9	23.0	23.7	23.5	24.3	24.9
8H 4H	21.3	22.2	21.9	22.7	23.3	21.3	22.1	21.8	22.7	23.2
6H	22.6	23.3	23.1	23.9	24.5	22.5	23.2	23.1	23.8	24.4
8H	23.2	23.9	23.8	24.5	25.1	23.2	23.8	23.8	24.4	25.0
12H	24.0	24.5	24.6	25.1	25.8	23.9	24.5	24.5	25.1	25.7
12H 4H	21.4	22.2	21.9	22.7	23.3	21.3	22.1	21.9	22.7	23.3
6H	22.7	23.4	23.3	23.9	24.6	22.7	23.3	23.3	23.9	24.5
8H	23.5	24.0	24.1	24.6	25.3	23.4	24.0	24.0	24.6	25.2
Variations with the observer position at spacings:										
S = 1.0H	+ 0.1 / - 0.1					+ 0.1 / - 0.1				
1.5H	+ 0.2 / - 0.3					+ 0.2 / - 0.3				
2.0H	+ 0.1 / - 0.3					+ 0.2 / - 0.3				

CIE Pub.117, 2250 lm Total Lamp Luminous Flux Corrected (8log(F/F0) = 2.8)
 Area: 0.1677 m2

C Range: 0 - 360DEG
 C Interval: 30.0DEG
 Test Speed: HIGH
 Temperature:25.3DEG
 Operators:admin
 Test Date:2022-03-16

Range: 0 - 180DEG
 Interval: 1.0DEG
 Test System:EVERFINE GO-2000B_V1 SYSTEM V2.00.411
 Humidity:65.0%
 Test Distance:8.780m [K=1.0000]
 Remarks:

UTILIZATION FACTORS TABLE

Test:U:119.97V I:0.3769A P:40.779W PF:0.9010 Freq:60.00Hz Lamp Flux:2249.95x1 lm		
NAME: ASD lighting Corp	TYPE:	WEIGHT:
SPEC.:ASD-LFC-HN-20D42-AC-3000K	DIM.:	SERIAL No.:
MFR.: ASD lighting Corp	SUR.:0.43*0.39	Shielding Angle:

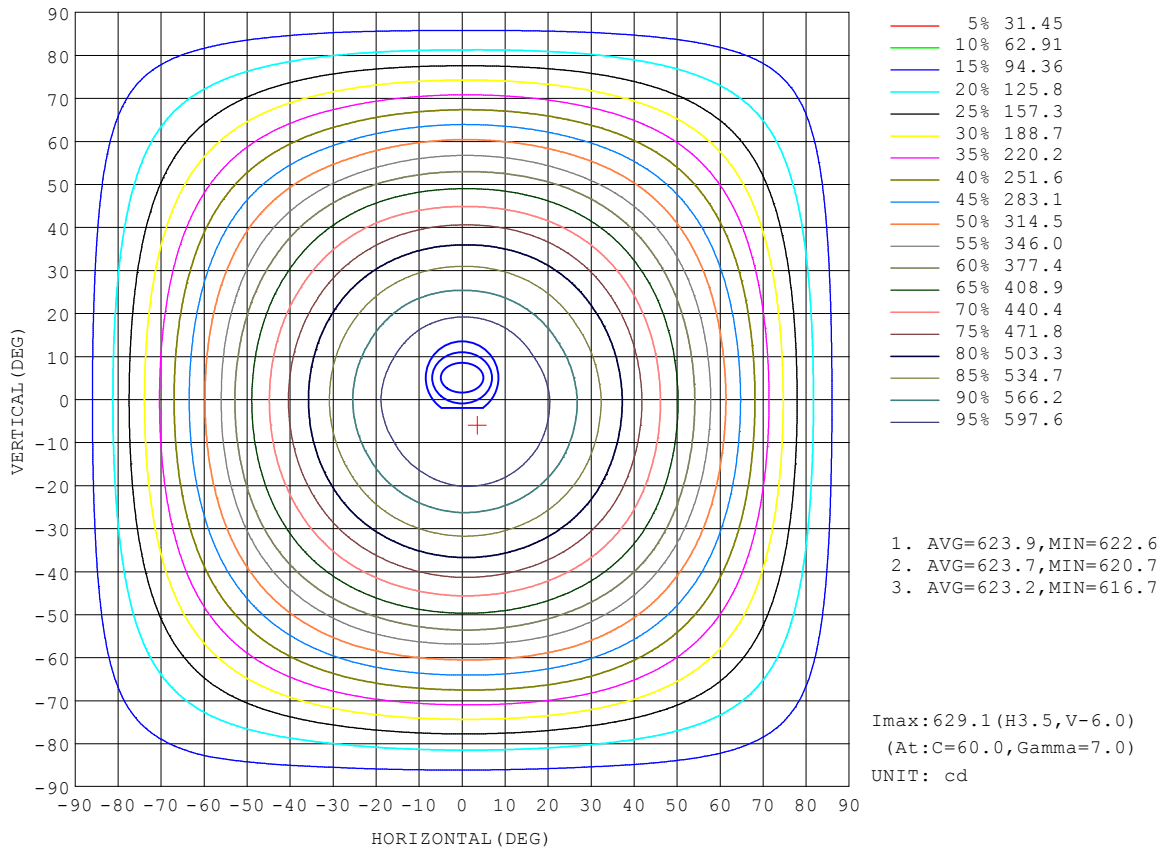
REFLECTANCE										
Ceiling	0.8	0.8	0.8	0.7	0.7	0.7	0.5	0.5	0.5	0
Walls	0.7	0.5	0.3	0.7	0.5	0.3	0.7	0.5	0.3	0
Working plane	0.2	0.2	0.2	0.2	0.2	0.2	0.2	0.2	0.2	0
ROOM INDEX	UTILIZATION FACTORS (PERCENT) $k(RI) \times RCR = 5$									
k = 0.60	52	40	33	52	40	33	50	39	33	26
0.80	62	50	42	61	49	42	58	48	41	34
1.00	70	58	50	69	57	50	66	58	49	41
1.25	77	65	58	75	64	57	72	62	56	47
1.50	82	71	63	80	70	62	76	67	61	52
2.00	89	79	72	87	78	71	82	75	69	59
2.50	94	84	77	91	83	76	86	79	73	63
3.00	97	89	82	94	87	81	89	83	78	67
4.00	101	95	89	98	92	87	93	88	83	72
5.00	104	98	93	101	96	91	95	91	87	75
ROOM INDEX	UF(total)									Direct
According to DIN EN 13032-2 2004			Suspended				SHRNOM = 1.25			

C Range: 0 - 360DEG
 C Interval: 30.0DEG
 Test Speed: HIGH
 Temperature:25.3DEG
 Operators:admin
 Test Date:2022-03-16

Range: 0 - 180DEG
 Interval: 1.0DEG
 Test System:EVERFINE GO-2000B_V1 SYSTEM V2.00.411
 Humidity:65.0%
 Test Distance:8.780m [K=1.0000]
 Remarks:

ISOCANDELA DIAGRAM

Test:U:119.97V I:0.3769A P:40.779W PF:0.9010 Freq:60.00Hz Lamp Flux:2249.95x1 lm		
NAME: ASD lighting Corp	TYPE:	WEIGHT:
SPEC.:ASD-LFC-HN-20D42-AC-3000K	DIM.:	SERIAL No.:
MFR.: ASD lighting Corp	SUR.:0.43*0.39	Shielding Angle:

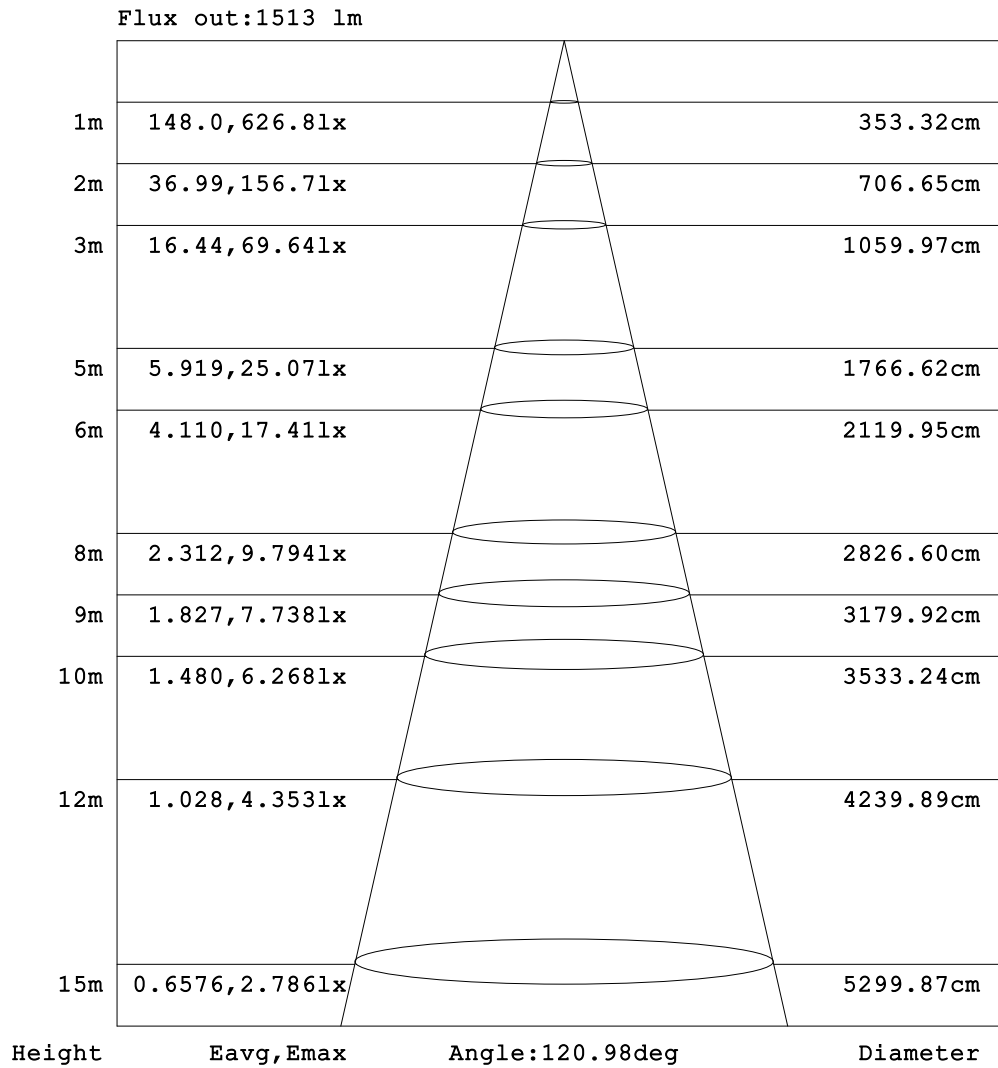


C Range: 0 - 360DEG
 C Interval: 30.0DEG
 Test Speed: HIGH
 Temperature:25.3DEG
 Operators:admin
 Test Date:2022-03-16

Range: 0 - 180DEG
 Interval: 1.0DEG
 Test System:EVERFINE GO-2000B_V1 SYSTEM V2.00.411
 Humidity:65.0%
 Test Distance:8.780m [K=1.0000]
 Remarks:

AAI Figure

Test:U:119.97V I:0.3769A P:40.779W PF:0.9010 Freq:60.00Hz Lamp Flux:2249.95x1 lm		
NAME: ASD lighting Corp	TYPE:	WEIGHT:
SPEC.:ASD-LFC-HN-20D42-AC-3000K	DIM.:	SERIAL No.:
MFR.: ASD lighting Corp	SUR.:0.43*0.39	Shielding Angle:



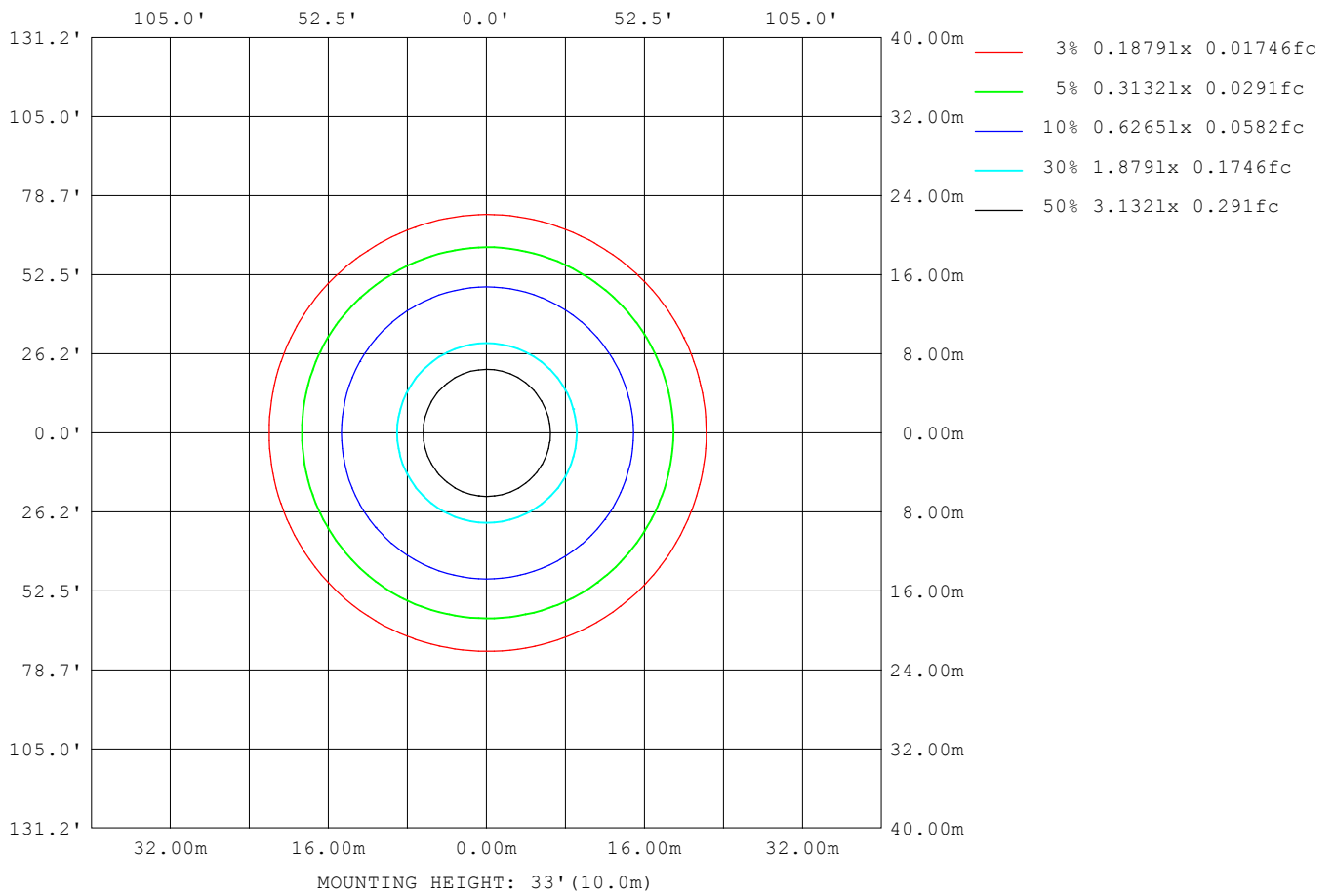
Note:The Curves indicate the illuminated area and the average illumination when the luminaire is at different distance.

C Range: 0 - 360DEG
 C Interval: 30.0DEG
 Test Speed: HIGH
 Temperature:25.3DEG
 Operators:admin
 Test Date:2022-03-16

Range: 0 - 180DEG
 Interval: 1.0DEG
 Test System:EVERFINE GO-2000B_V1 SYSTEM V2.00.411
 Humidity:65.0%
 Test Distance:8.780m [K=1.0000]
 Remarks:

ISOLUX DIAGRAM

Test:U:119.97V I:0.3769A P:40.779W PF:0.9010 Freq:60.00Hz Lamp Flux:2249.95x1 lm		
NAME: ASD lighting Corp	TYPE:	WEIGHT:
SPEC.:ASD-LFC-HN-20D42-AC-3000K	DIM.:	SERIAL No.:
MFR.: ASD lighting Corp	SUR.:0.43*0.39	Shielding Angle:



C Range: 0 - 360DEG
 C Interval: 30.0DEG
 Test Speed: HIGH
 Temperature:25.3DEG
 Operators:admin
 Test Date:2022-03-16

Range: 0 - 180DEG
 Interval: 1.0DEG
 Test System:EVERFINE GO-2000B_V1 SYSTEM V2.00.411
 Humidity:65.0%
 Test Distance:8.780m [K=1.0000]
 Remarks:

LED Avg.L Report

Test:U:119.97V I:0.3769A P:40.779W PF:0.9010 Freq:60.00Hz Lamp Flux:2249.95x1 lm		
NAME: ASD lighting Corp	TYPE:	WEIGHT:
SPEC.:ASD-LFC-HN-20D42-AC-3000K	DIM.:	SERIAL No.:
MFR.: ASD lighting Corp	SUR.:0.43*0.39	Shielding Angle:

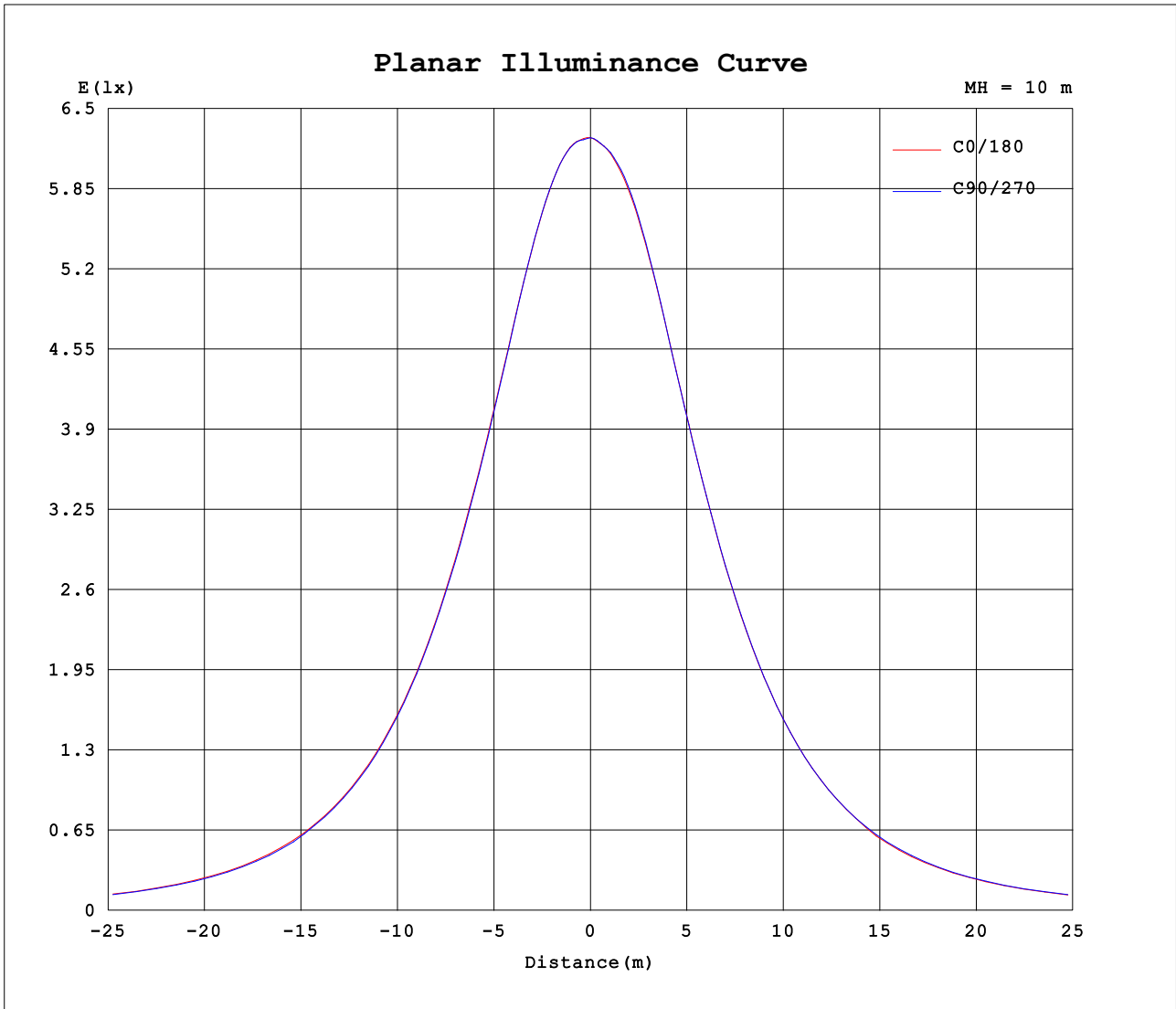
AvgL	cd/m2
L_0~180 (65) av	3883
L_0~180 (75) av	4195
L_0~180 (85) av	6869
L_90~270 (65) av	3863
L_90~270 (75) av	4191
L_90~270 (85) av	6852
L_45 (65) av	3867
L_45 (75) av	4191
L_45 (85) av	6888

Standard: GB/T 29293-2012

C Range: 0 - 360DEG
 C Interval: 30.0DEG
 Test Speed: HIGH
 Temperature:25.3DEG
 Operators:admin
 Test Date:2022-03-16

Range: 0 - 180DEG
 Interval: 1.0DEG
 Test System:EVERFINE GO-2000B_V1 SYSTEM V2.00.411
 Humidity:65.0%
 Test Distance:8.780m [K=1.0000]
 Remarks:

Planar Illuminance Curve



C Range: 0 - 360DEG
 C Interval: 30.0DEG
 Test Speed: HIGH
 Temperature:25.3DEG
 Operators:admin
 Test Date:2022-03-16

Range: 0 - 180DEG
 Interval: 1.0DEG
 Test System:EVERFINE GO-2000B_V1 SYSTEM V2.00.411
 Humidity:65.0%
 Test Distance:8.780m [K=1.0000]
 Remarks:

LUMINOUS DISTRIBUTION INTENSITY DATA

Test:U:119.97V I:0.3769A P:40.779W PF:0.9010 Freq:60.00Hz Lamp Flux:2249.95x1 lm		
NAME: ASD lighting Corp	TYPE:	WEIGHT:
SPEC.:ASD-LFC-HN-20D42-AC-3000K	DIM.:	SERIAL No.:
MFR.: ASD lighting Corp	SUR.:0.43*0.39	Shielding Angle:

Table--1

UNIT: cd

C (DEG) □ (DEG)	0	30	60	90	120	150	180	210	240	270	300	330							
0	626	627	627	626	625	623	626	627	627	626	625	623							
5	629	629	629	628	626	622	624	624	624	624	624	624							
10	626	627	627	626	624	620	620	621	621	622	623	622							
15	617	618	618	617	614	610	611	610	612	613	614	613							
20	599	601	601	599	594	592	593	591	593	594	595	595							
25	575	576	575	573	570	568	568	567	569	568	569	570							
30	548	549	547	545	543	540	540	539	540	540	542	543							
35	518	518	517	515	511	508	508	508	508	509	512	513							
40	485	485	483	482	477	475	474	473	474	476	479	480							
45	449	450	447	446	442	439	439	437	439	439	442	445							
50	411	412	409	407	404	402	400	398	400	401	404	406							
55	370	371	367	367	363	362	357	358	360	360	364	366							
60	327	323	324	319	320	315	313	315	313	318	318	323							
65	281	278	279	275	274	271	269	271	270	273	273	277							
70	233	232	233	229	229	225	223	224	224	227	228	231							
75	186	185	185	183	182	181	178	179	180	181	182	182							
80	139	140	138	138	137	138	136	135	136	135	138	138							
85	101	102	101	102	101	102	99.6	98.9	99.3	98.7	100	100							
90	71.1	71.8	72.6	74.6	75.5	77.8	75.7	74.4	73.6	71.4	71.2	70.9							
95	54.3	55.3	56.7	59.0	61.0	63.8	61.9	60.7	58.8	56.1	54.6	54.2							
100	48.4	49.4	50.0	50.8	52.1	54.0	52.5	51.6	50.1	48.0	47.1	47.1							
105	43.0	43.7	44.6	46.1	47.3	48.0	46.9	46.4	45.3	44.0	42.9	42.3							
110	36.8	37.3	38.0	40.1	41.5	43.5	42.5	42.1	40.7	38.5	36.8	36.5							
115	30.8	31.1	31.8	33.8	35.5	37.6	36.8	36.6	34.8	32.7	30.9	30.7							
120	22.0	25.0	25.3	27.4	29.8	32.1	27.7	31.3	29.8	27.7	25.4	25.4							
125	17.5	19.5	19.9	21.9	24.4	26.4	23.0	25.8	24.8	22.5	20.5	20.2							
130	13.6	15.1	15.7	17.2	19.6	21.3	18.9	21.0	20.0	18.0	16.5	15.8							
135	11.2	11.4	11.8	13.5	15.6	17.0	15.3	16.6	15.9	14.4	12.9	12.1							
140	9.28	9.20	9.52	10.6	12.4	13.8	12.7	13.5	13.0	11.3	10.0	9.56							
145	9.45	9.29	9.29	9.58	10.1	11.2	10.5	10.9	10.4	9.27	8.74	8.52							
150	9.81	9.63	9.83	9.99	9.94	10.2	9.45	9.33	9.44	9.33	9.13	9.14							
155	10.4	10.2	10.3	10.7	10.5	10.7	10.1	9.89	9.87	10.1	9.83	9.77							
160	11.0	10.9	10.8	11.1	11.2	11.0	10.8	10.4	10.4	10.8	10.5	10.3							
165	11.3	11.0	11.2	11.8	11.6	11.3	11.3	11.1	11.1	11.4	11.0	10.8							
170	11.2	11.1	11.1	11.6	11.4	11.4	11.3	11.2	11.5	11.6	11.3	11.0							
175	10.8	10.7	10.7	11.0	10.8	10.8	10.9	10.7	10.7	11.0	10.7	10.6							
180	10.5	10.4	10.5	10.5	10.3	10.3	10.5	10.4	10.5	10.5	10.3	10.3							

C Range: 0 - 360DEG
 C Interval: 30.0DEG
 Test Speed: HIGH
 Temperature:25.3DEG
 Operators:admin
 Test Date:2022-03-16

□ Range: 0 - 180DEG
 □ Interval: 1.0DEG
 Test System:EVERFINE GO-2000B_V1 SYSTEM V2.00.411
 Humidity:65.0%
 Test Distance:8.780m [K=1.0000]
 Remarks: