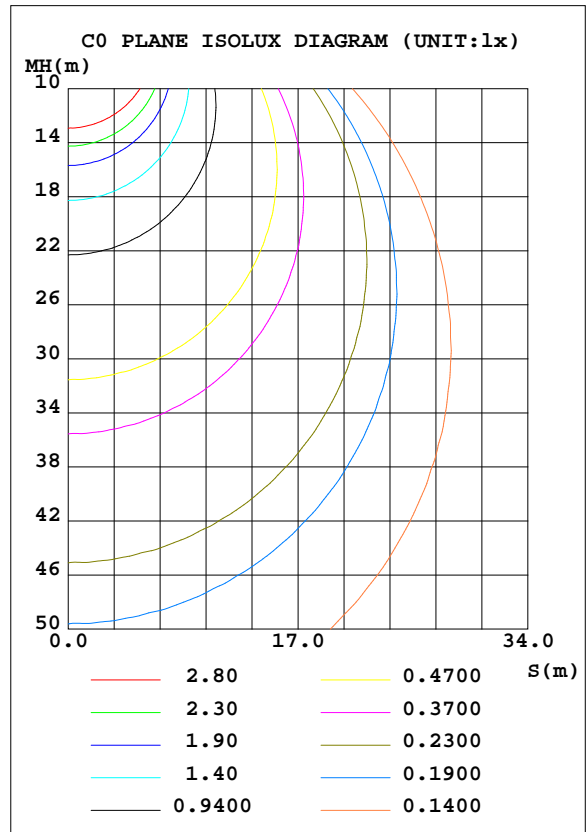
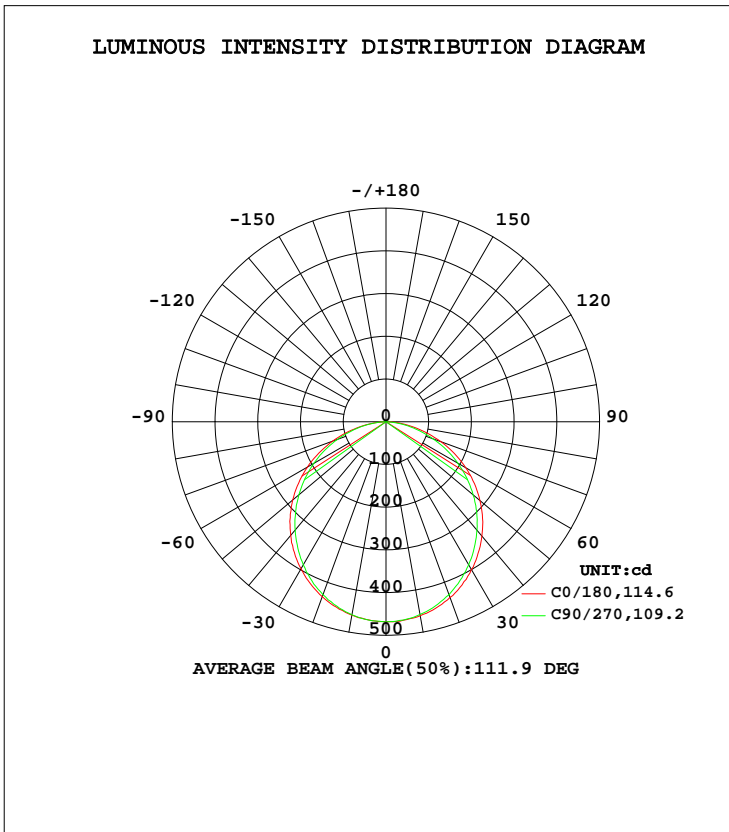


**LUMINAIRE PHOTOMETRIC TEST REPORT**

Test:U:120.04V I:0.1488A P:16.750W PF:0.9377 Freq:60.00Hz Lamp Flux:1328.7x1 lm		
NAME: ASD-UCS-32D16CC	TYPE: N/A	WEIGHT: N/A
SPEC.: N/A	DIM.: N/A	SERIAL No.: N/A
MFR.: ASD Lighting Corp	SUR.: N/A	Shielding Angle: N/A

DATA OF LAMP		PHOTOMETRIC DATA				Eff: 79.33 lm/W
MODEL	ASD-UCS-32D16CC	I <sub>max</sub> (cd)	468.9	S/MH(C0/180)	1.27	
NOMINAL POWER(W)	16	LOR(%)	100.0	S/MH(C90/270)	1.23	
RATED VOLTAGE(V)	120	TOTAL FLUX(lm)	1328.7	η UP, DN(C0-180)	0.1,49.9	
NOMINAL FLUX(lm)	1328.7	CIE CLASS	DIRECT	η UP, DN(C180-360)	0.0,50.0	
LAMPS INSIDE	1	η up(%)	0.1	CIBSE SHR NOM	1.25	
TEST VOLTAGE(V)	120	η down(%)	99.9	CIBSE SHR MAX	1.35	



C Range: 0 - 360DEG  
 C Interval: 22.5DEG  
 Test Speed: HIGH  
 Temperature:24.9DEG  
 Operators:Water  
 Test Date:2023-09-08

γ Range: 0 - 180DEG  
 γ Interval: 1.0DEG  
 Test System:EVERFINE GO-R5000\_V2 SYSTEM V2.00.446  
 Humidity:50%  
 Test Distance:2.513m [K=1.0000]  
 Remarks: Model No: UCL-31B-32G

ZONAL FLUX DIAGRAM

ZONAL FLUX DIAGRAM:

γ	C0	C45	C90	C135	C180	C225	C270	C315	γ	Φ zone	Φ total	%lum, lamp
10	459.5	459.0	458.9	458.0	461.2	459.4	458.3	459.0	0- 10	44.25	44.25	3.33,3.33
20	435.9	433.8	431.0	432.0	437.7	434.2	431.0	432.7	10- 20	126.5	170.8	12.9,12.9
30	397.8	393.7	387.2	390.4	399.8	393.9	387.2	391.8	20- 30	191.1	361.9	27.2,27.2
40	347.2	339.6	330.9	337.7	349.1	340.6	331.5	338.6	30- 40	229.8	591.7	44.5,44.5
50	285.2	275.0	266.0	275.3	287.4	276.7	266.3	274.9	40- 50	238.0	829.7	62.4,62.4
60	212.8	203.6	195.3	203.9	215.5	204.6	194.2	203.0	50- 60	215.2	1045	78.6,78.6
70	132.5	127.2	120.7	127.4	136.8	126.5	117.5	125.1	60- 70	164.1	1209	91,91
80	54.82	52.82	49.88	53.58	58.65	51.94	46.19	50.87	70- 80	93.54	1303	98,98
90	0.1029	0.0751	0.0698	0.0867	1.069	0.0332	0.0239	0.0290	80- 90	24.69	1327	99.9,99.9
100	0.1131	0.1304	0.1215	0.1268	0.0499	0.0506	0.0490	0.0464	90-100	0.0964	1327	99.9,99.9
110	0.1405	0.1475	0.1454	0.1470	0.0810	0.0833	0.0785	0.0754	100-110	0.1035	1327	99.9,99.9
120	0.1913	0.1970	0.1973	0.1993	0.1239	0.1222	0.1159	0.1129	110-120	0.1316	1328	99.9,99.9
130	0.2764	0.2837	0.2970	0.2883	0.1758	0.1741	0.1628	0.1623	120-130	0.1704	1328	99.9,99.9
140	0.4299	0.4679	0.4738	0.4564	0.2293	0.2326	0.2253	0.2245	130-140	0.2148	1328	99.9,99.9
150	0.6023	0.6846	0.7050	0.6591	0.2789	0.2974	0.2997	0.2922	140-150	0.2586	1328	100,100
160	0.7583	0.8079	0.8218	0.7936	0.3883	0.3811	0.3705	0.3712	150-160	0.2481	1328	100,100
170	0.7364	0.7510	0.7453	0.7442	0.4776	0.4640	0.4273	0.4333	160-170	0.1703	1329	100,100
180	0.6248	0.5861	0.5655	0.6078	0.6244	0.6117	0.5725	0.5773	170-180	0.0567	1329	100,100
DEG	LUMINOUS INTENSITY:cd									UNIT:lm		

Conical surface Flux(90deg): 711.61 lm

%lum = 53.6%  
 %lamp = 53.6%

Conical surface Flux(120deg): 1044.9 lm

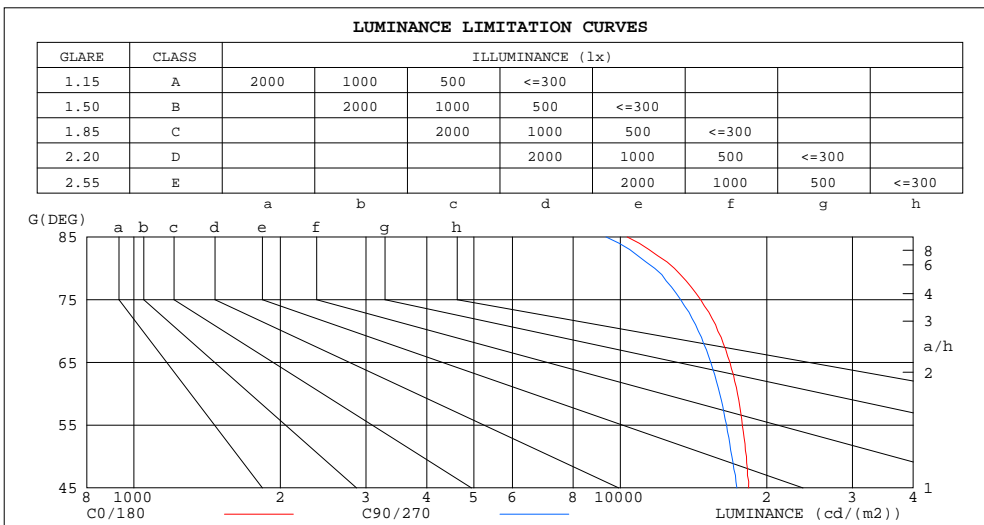
%lum = 78.6%  
 %lamp = 78.6%

C Range: 0 - 360DEG  
 C Interval: 22.5DEG  
 Test Speed: HIGH  
 Temperature:24.9DEG  
 Operators:Water  
 Test Date:2023-09-08

γ Range: 0 - 180DEG  
 γ Interval: 1.0DEG  
 Test System:EVERFINE GO-R5000\_V2 SYSTEM V2.00.446  
 Humidity:50%  
 Test Distance:2.513m [K=1.0000]  
 Remarks: Model No: UCL-31B-32G

**LUMINANCE LIMITATION CURVES**

Test:U:120.04V I:0.1488A P:16.750W PF:0.9377 Freq:60.00Hz Lamp Flux:1328.7x1 lm		
NAME: ASD-UCS-32D16CC	TYPE: N/A	WEIGHT: N/A
SPEC.: N/A	DIM.: N/A	SERIAL No.: N/A
MFR.: ASD Lighting Corp	SUR.: N/A	Shielding Angle: N/A



LUMINANCE cd/(m2)		
G (DEG)	C0/180	C90/270
85	10335	9352
80	12924	11771
75	14629	13306
70	15859	14465
65	16806	15349
60	17420	16006
55	17817	16535
50	18162	16960
45	18350	17359

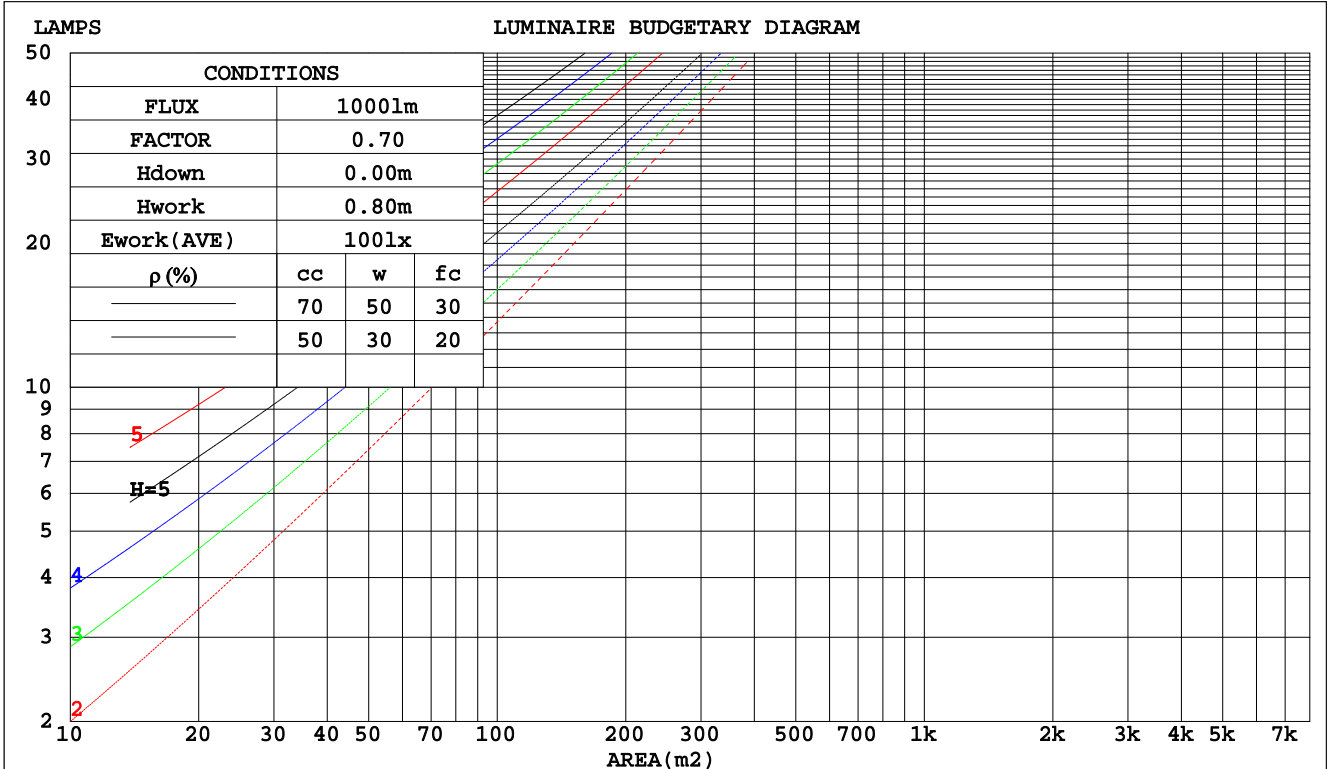
C Range: 0 - 360DEG  
 C Interval: 22.5DEG  
 Test Speed: HIGH  
 Temperature: 24.9DEG  
 Operators: Water  
 Test Date: 2023-09-08

γ Range: 0 - 180DEG  
 γ Interval: 1.0DEG  
 Test System: EVERFINE GO-R5000\_V2 SYSTEM V2.00.446  
 Humidity: 50%  
 Test Distance: 2.513m [K=1.0000]  
 Remarks: Model No: UCL-31B-32G

CU AND LUMINAIRE BUDGETARY ESTIMATE DIAGRAM

Test:U:120.04V I:0.1488A P:16.750W PF:0.9377 Freq:60.00Hz Lamp Flux:1328.7x1 lm		
NAME: ASD-UCS-32D16CC	TYPE: N/A	WEIGHT: N/A
SPEC.: N/A	DIM.: N/A	SERIAL No.: N/A
MFR.: ASD Lighting Corp	SUR.: N/A	Shielding Angle: N/A

pcc	80%			70%			50%			30%			10%			0
	50%	30%	10%	50%	30%	10%	50%	30%	10%	50%	30%	10%	50%	30%	10%	0
pw																0
pfc	20%			20%			20%			20%			20%			0
RCR	RCR:Room Cavity Ratio      Coefficients of Utilization(CU)															
0.0	1.19	1.19	1.19	1.16	1.16	1.16	1.11	1.11	1.11	1.06	1.06	1.06	1.02	1.02	1.02	.00
1.0	1.04	.00	.96	1.02	.98	.94	.97	.94	.91	.93	.91	.88	.90	.88	.86	.84
2.0	.90	.84	.78	.89	.82	.77	.85	.80	.75	.82	.77	.73	.79	.75	.72	.69
3.0	.79	.71	.65	.78	.70	.64	.75	.68	.63	.72	.66	.62	.69	.65	.61	.58
4.0	.70	.61	.55	.69	.61	.54	.66	.59	.53	.64	.58	.53	.62	.56	.52	.50
5.0	.63	.54	.47	.62	.53	.47	.59	.52	.46	.57	.51	.46	.56	.50	.45	.43
6.0	.56	.47	.41	.55	.47	.41	.54	.46	.40	.52	.45	.40	.50	.44	.40	.38
7.0	.51	.42	.36	.50	.42	.36	.49	.41	.36	.47	.41	.35	.46	.40	.35	.33
8.0	.47	.38	.32	.46	.38	.32	.45	.37	.32	.43	.37	.32	.42	.36	.31	.30
9.0	.43	.35	.29	.42	.34	.29	.41	.34	.29	.40	.33	.29	.39	.33	.28	.27
10.0	.39	.32	.26	.39	.31	.26	.38	.31	.26	.37	.31	.26	.36	.30	.26	.24



C Range: 0 - 360DEG  
 C Interval: 22.5DEG  
 Test Speed: HIGH  
 Temperature:24.9DEG  
 Operators:Water  
 Test Date:2023-09-08

γ Range: 0 - 180DEG  
 γ Interval: 1.0DEG  
 Test System:EVERFINE GO-R5000\_V2 SYSTEM V2.00.446  
 Humidity:50%  
 Test Distance:2.513m [K=1.0000]  
 Remarks: Model No: UCL-31B-32G

WEC AND CCEC

Test:U:120.04V I:0.1488A P:16.750W PF:0.9377 Freq:60.00Hz		
Lamp Flux:1328.7x1 lm		
NAME: ASD-UCS-32D16CC	TYPE: N/A	WEIGHT: N/A
SPEC.: N/A	DIM.: N/A	SERIAL No.: N/A
MFR.: ASD Lighting Corp	SUR.: N/A	Shielding Angle: N/A

ρcc	80%			70%			50%			30%			10%			0
ρw	50%	30%	10%	50%	30%	10%	50%	30%	10%	50%	30%	10%	50%	30%	10%	0
ρfc	20%			20%			20%			20%			20%			0
RCR	RCR:Room Cavity Ratio						Wall Exitance Coefficients(WEC)									
0.0																
1.0	.310	.176	.056	.303	.173	.055	.289	.166	.053	.277	.160	.051	.266	.154	.050	
2.0	.292	.160	.049	.286	.157	.048	.274	.152	.047	.263	.147	.046	.253	.143	.045	
3.0	.270	.144	.043	.265	.142	.043	.254	.138	.042	.245	.134	.041	.236	.130	.040	
4.0	.249	.130	.038	.244	.128	.038	.235	.125	.037	.227	.122	.037	.219	.119	.036	
5.0	.230	.117	.034	.226	.116	.034	.218	.113	.033	.210	.111	.033	.203	.109	.033	
6.0	.214	.107	.031	.210	.106	.031	.203	.104	.030	.196	.102	.030	.189	.100	.030	
7.0	.199	.098	.028	.195	.097	.028	.189	.096	.028	.183	.094	.027	.177	.092	.027	
8.0	.186	.091	.026	.183	.090	.025	.177	.088	.025	.171	.087	.025	.166	.085	.025	
9.0	.174	.084	.024	.171	.083	.023	.166	.082	.023	.161	.081	.023	.156	.079	.023	
10.0	.164	.078	.022	.161	.078	.022	.156	.077	.022	.152	.075	.021	.148	.074	.021	

ρcc	80%			70%			50%			30%			10%			0
ρw	50%	30%	10%	50%	30%	10%	50%	30%	10%	50%	30%	10%	50%	30%	10%	0
ρfc	20%			20%			20%			20%			20%			0
RCR	RCR:Room Cavity Ratio						Ceiling Cavity Exitance Coefficients(CCEC)									
0.0	.191	.191	.191	.164	.164	.164	.112	.112	.112	.064	.064	.064	.020	.020	.020	
1.0	.181	.157	.135	.155	.135	.116	.106	.093	.080	.061	.054	.047	.020	.017	.015	
2.0	.173	.133	.099	.148	.114	.085	.102	.079	.060	.059	.046	.035	.019	.015	.011	
3.0	.165	.115	.075	.142	.099	.065	.097	.069	.046	.056	.040	.027	.018	.013	.009	
4.0	.158	.102	.059	.135	.088	.051	.093	.061	.036	.054	.036	.021	.017	.012	.007	
5.0	.150	.091	.048	.129	.079	.042	.089	.055	.029	.052	.032	.017	.017	.011	.006	
6.0	.143	.083	.040	.123	.072	.035	.085	.050	.025	.049	.030	.015	.016	.010	.005	
7.0	.136	.076	.034	.117	.066	.030	.081	.046	.021	.047	.027	.013	.015	.009	.004	
8.0	.130	.070	.030	.112	.061	.026	.077	.043	.018	.045	.025	.011	.015	.008	.004	
9.0	.124	.065	.026	.107	.057	.023	.074	.040	.016	.043	.024	.010	.014	.008	.003	
10.0	.118	.061	.023	.102	.053	.020	.071	.037	.014	.041	.022	.009	.013	.007	.003	

C Range: 0 - 360DEG  
 C Interval: 22.5DEG  
 Test Speed: HIGH  
 Temperature:24.9DEG  
 Operators:Water  
 Test Date:2023-09-08

γ Range: 0 - 180DEG  
 γ Interval: 1.0DEG  
 Test System:EVERFINE GO-R5000\_V2 SYSTEM V2.00.446  
 Humidity:50%  
 Test Distance:2.513m [K=1.0000]  
 Remarks: Model No: UCL-31B-32G

UGR(Unified Glare Rating) Table

Test:U:120.04V I:0.1488A P:16.750W PF:0.9377 Freq:60.00Hz Lamp Flux:1328.7x1 lm		
NAME: ASD-UCS-32D16CC	TYPE: N/A	WEIGHT: N/A
SPEC.: N/A	DIM.: N/A	SERIAL No.: N/A
MFR.: ASD Lighting Corp	SUR.: N/A	Shielding Angle: N/A

ceiling/cavity	0.7	0.7	0.5	0.5	0.3	0.7	0.7	0.5	0.5	0.3
walls	0.5	0.3	0.5	0.3	0.3	0.5	0.3	0.5	0.3	0.3
working plane	0.2	0.2	0.2	0.2	0.2	0.2	0.2	0.2	0.2	0.2
Room dimensions	Viewed crosswise					Viewed endwise				
x = 2H y = 2H	21.9	23.5	22.2	23.7	23.9	21.6	23.1	21.8	23.3	23.5
3H	23.5	24.9	23.8	25.1	25.4	23.1	24.5	23.4	24.7	24.9
4H	24.1	25.4	24.4	25.7	26.0	23.6	25.0	23.9	25.2	25.5
6H	24.5	25.8	24.9	26.1	26.3	24.0	25.3	24.4	25.6	25.9
8H	24.7	25.9	25.0	26.2	26.4	24.2	25.4	24.5	25.7	26.0
12H	24.7	25.9	25.1	26.2	26.5	24.2	25.4	24.6	25.7	26.0
4H 2H	22.5	23.8	22.8	24.1	24.4	22.2	23.6	22.5	23.8	24.1
3H	24.3	25.4	24.6	25.7	26.0	23.9	25.1	24.2	25.4	25.7
4H	25.0	26.1	25.4	26.4	26.7	24.6	25.7	25.0	26.0	26.3
6H	25.5	26.5	25.9	26.8	27.2	25.1	26.1	25.5	26.4	26.8
8H	25.7	26.6	26.1	27.0	27.4	25.3	26.2	25.7	26.5	26.9
12H	25.8	26.6	26.3	27.0	27.4	25.4	26.2	25.8	26.6	27.0
8H 4H	25.2	26.1	25.6	26.5	26.9	24.9	25.8	25.3	26.1	26.5
6H	25.9	26.7	26.4	27.1	27.5	25.5	26.3	26.0	26.7	27.1
8H	26.2	26.8	26.7	27.3	27.7	25.8	26.4	26.2	26.9	27.3
12H	26.4	26.9	26.9	27.4	27.9	26.0	26.5	26.4	27.0	27.4
12H 4H	25.2	26.1	25.7	26.4	26.8	24.9	25.7	25.3	26.1	26.5
6H	26.0	26.6	26.4	27.1	27.5	25.6	26.3	26.1	26.7	27.1
8H	26.3	26.8	26.8	27.3	27.8	25.9	26.4	26.4	26.9	27.4
Variations with the observer position at spacings(CIE Pub.117):										
S = 1.0H	+ 0.1 / - 0.2					+ 0.2 / - 0.2				
1.5H	+ 0.2 / - 0.3					+ 0.2 / - 0.3				
2.0H	+ 0.2 / - 0.3					+ 0.2 / - 0.3				

CIE Pub.117, 1329 lm Total Lamp Luminous Flux Correct (8log(F/F0) = 1.0)  
Area: 0.024397 m2

C Range: 0 - 360DEG  
C Interval: 22.5DEG  
Test Speed: HIGH  
Temperature:24.9DEG  
Operators:Water  
Test Date:2023-09-08

γ Range: 0 - 180DEG  
γ Interval: 1.0DEG  
Test System:EVERFINE GO-R5000\_V2 SYSTEM V2.00.446  
Humidity:50%  
Test Distance:2.513m [K=1.0000]  
Remarks: Model No: UCL-31B-32G

**UTILIZATION FACTORS TABLE**

Test:U:120.04V I:0.1488A P:16.750W PF:0.9377 Freq:60.00Hz Lamp Flux:1328.7x1 lm		
NAME: ASD-UCS-32D16CC	TYPE: N/A	WEIGHT: N/A
SPEC.: N/A	DIM.: N/A	SERIAL No.: N/A
MFR.: ASD Lighting Corp	SUR.: N/A	Shielding Angle: N/A

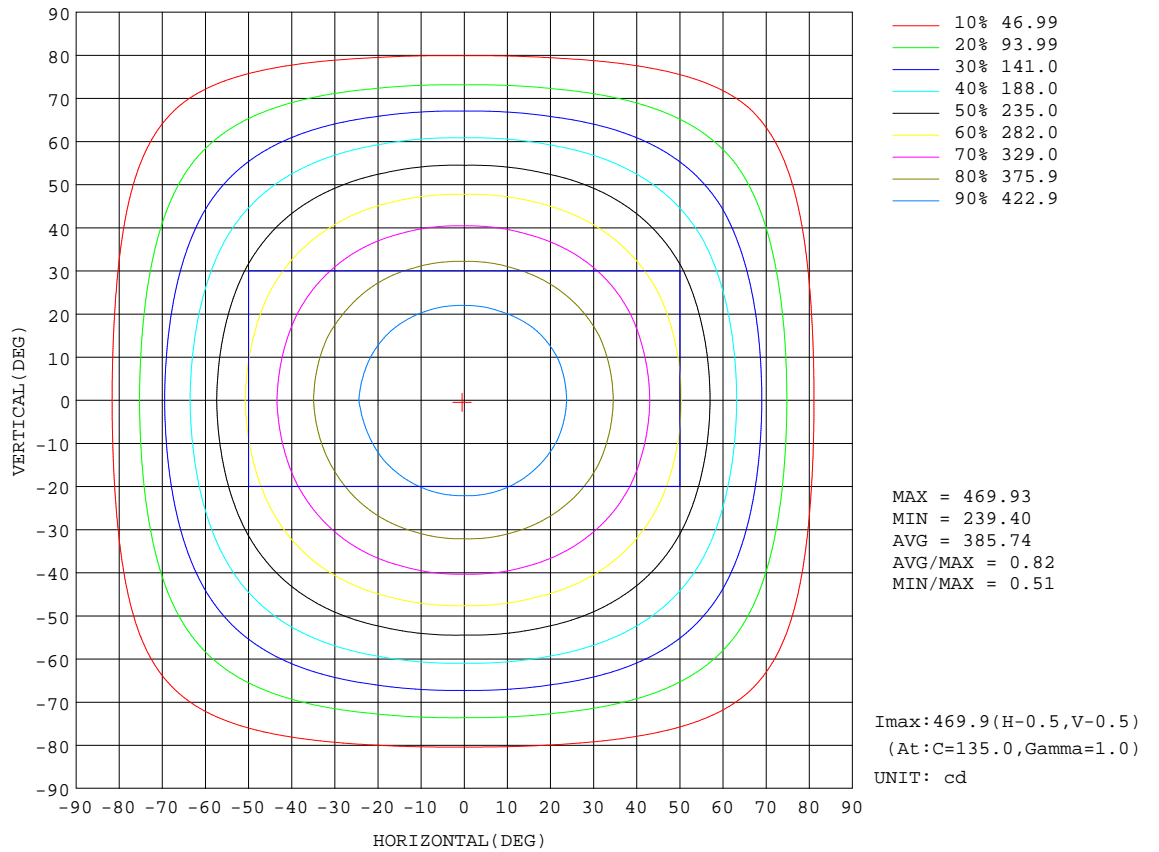
REFLECTANCE										
Ceiling	0.8	0.8	0.8	0.7	0.7	0.7	0.5	0.5	0.5	0
Walls	0.7	0.5	0.3	0.7	0.5	0.3	0.7	0.5	0.3	0
Working plane	0.2	0.2	0.2	0.2	0.2	0.2	0.2	0.2	0.2	0
ROOM INDEX	UTILIZATION FACTORS(PERCENT) $k(RI) \times RCR = 5$									
k = 0.60	57	46	39	57	46	39	56	45	39	32
0.80	68	56	48	66	55	48	65	55	48	41
1.00	76	65	57	75	64	57	72	66	57	49
1.25	83	73	65	82	72	65	79	70	64	57
1.50	88	78	71	86	77	71	83	75	70	62
2.00	95	86	80	93	85	79	90	83	78	70
2.50	99	91	85	97	90	84	93	87	82	74
3.00	102	95	90	100	94	89	96	91	87	78
4.00	106	101	96	104	99	94	100	95	92	83
5.00	109	104	100	106	102	98	102	98	95	86
ROOM INDEX	UF(total)									Direct
According to DIN EN 13032-2 2004			Suspended				SHRNOM = 1.25			

C Range: 0 - 360DEG  
 C Interval: 22.5DEG  
 Test Speed: HIGH  
 Temperature:24.9DEG  
 Operators:Water  
 Test Date:2023-09-08

$\gamma$  Range: 0 - 180DEG  
 $\gamma$  Interval: 1.0DEG  
 Test System:EVERFINE GO-R5000\_V2 SYSTEM V2.00.446  
 Humidity:50%  
 Test Distance:2.513m [K=1.0000]  
 Remarks: Model No: UCL-31B-32G

**ISOCANDELA DIAGRAM**

Test:U:120.04V I:0.1488A P:16.750W PF:0.9377 Freq:60.00Hz Lamp Flux:1328.7x1 lm		
NAME: ASD-UCS-32D16CC	TYPE: N/A	WEIGHT: N/A
SPEC.: N/A	DIM.: N/A	SERIAL No.: N/A
MFR.: ASD Lighting Corp	SUR.: N/A	Shielding Angle: N/A



C Range: 0 - 360DEG  
 C Interval: 22.5DEG  
 Test Speed: HIGH  
 Temperature: 24.9DEG  
 Operators: Water  
 Test Date: 2023-09-08

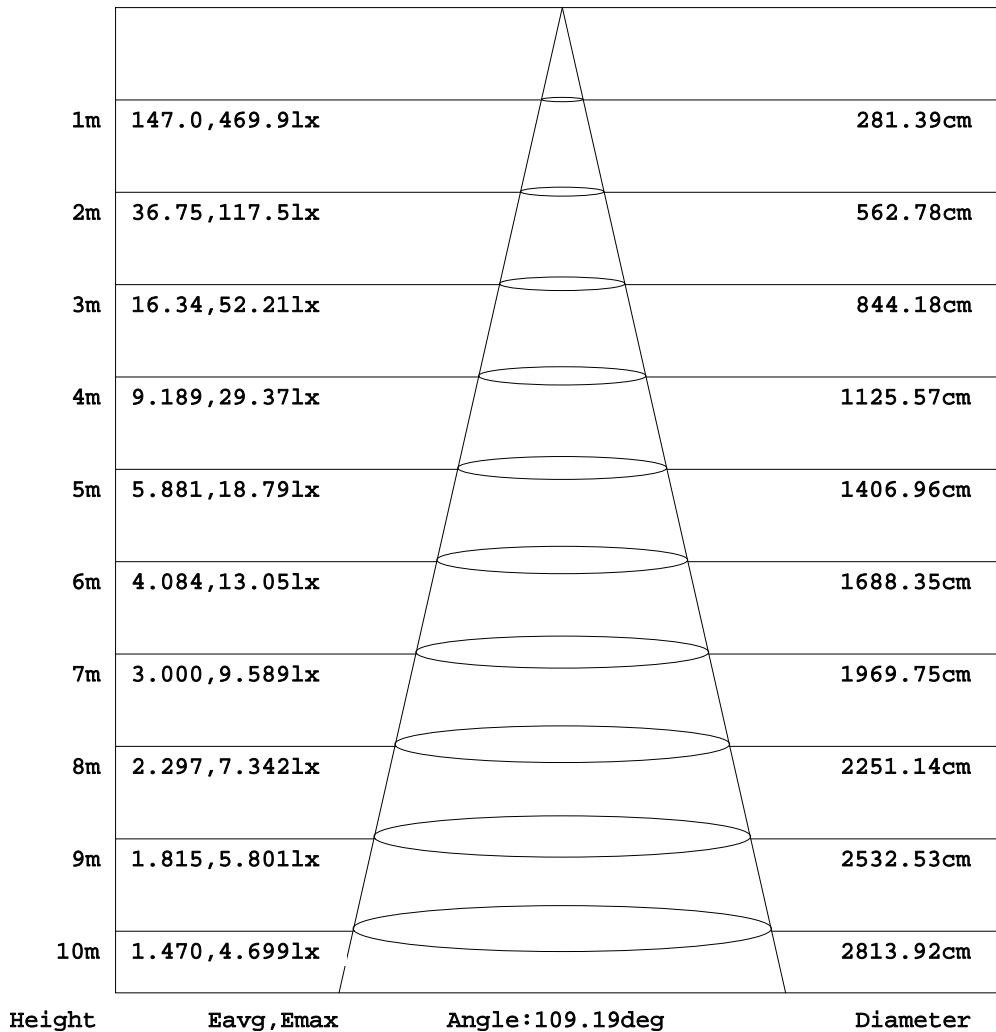
γ Range: 0 - 180DEG  
 γ Interval: 1.0DEG  
 Test System: EVERFINE GO-R5000\_V2 SYSTEM V2.00.446  
 Humidity: 50%  
 Test Distance: 2.513m [K=1.0000]  
 Remarks: Model No: UCL-31B-32G



**AAI Figure**

Test:U:120.04V I:0.1488A P:16.750W PF:0.9377 Freq:60.00Hz Lamp Flux:1328.7x1 lm		
NAME: ASD-UCS-32D16CC	TYPE: N/A	WEIGHT: N/A
SPEC.: N/A	DIM.: N/A	SERIAL No.: N/A
MFR.: ASD Lighting Corp	SUR.: N/A	Shielding Angle: N/A

Flux out:942.0 lm



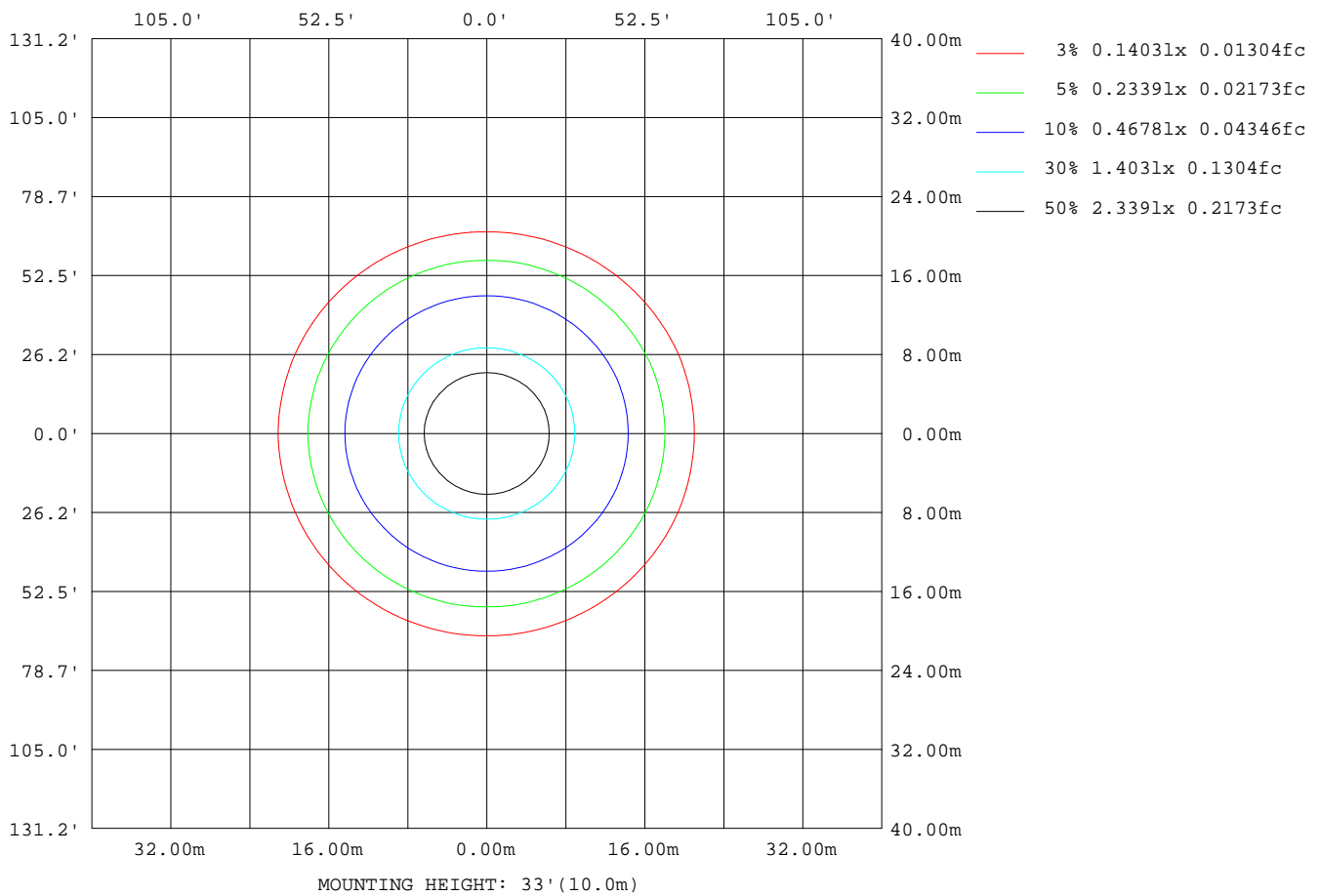
Note: The Curves indicate the illuminated area and the average illumination when the luminaire is at different distance.

C Range: 0 - 360DEG  
C Interval: 22.5DEG  
Test Speed: HIGH  
Temperature: 24.9DEG  
Operators: Water  
Test Date: 2023-09-08

γ Range: 0 - 180DEG  
γ Interval: 1.0DEG  
Test System: EVERFINE GO-R5000\_V2 SYSTEM V2.00.446  
Humidity: 50%  
Test Distance: 2.513m [K=1.0000]  
Remarks: Model No: UCL-31B-32G

**ISOLUX DIAGRAM**

Test:U:120.04V I:0.1488A P:16.750W PF:0.9377 Freq:60.00Hz Lamp Flux:1328.7x1 lm		
NAME: ASD-UCS-32D16CC	TYPE: N/A	WEIGHT: N/A
SPEC.: N/A	DIM.: N/A	SERIAL No.: N/A
MFR.: ASD Lighting Corp	SUR.: N/A	Shielding Angle: N/A



C Range: 0 - 360DEG  
 C Interval: 22.5DEG  
 Test Speed: HIGH  
 Temperature: 24.9DEG  
 Operators: Water  
 Test Date: 2023-09-08

γ Range: 0 - 180DEG  
 γ Interval: 1.0DEG  
 Test System: EVERFINE GO-R5000\_V2 SYSTEM V2.00.446  
 Humidity: 50%  
 Test Distance: 2.513m [K=1.0000]  
 Remarks: Model No: UCL-31B-32G

LED Avg.L Report

Test:U:120.04V I:0.1488A P:16.750W PF:0.9377 Freq:60.00Hz Lamp Flux:1328.7x1 lm		
NAME: ASD-UCS-32D16CC	TYPE: N/A	WEIGHT: N/A
SPEC.: N/A	DIM.: N/A	SERIAL No.: N/A
MFR.: ASD Lighting Corp	SUR.: N/A	Shielding Angle: N/A

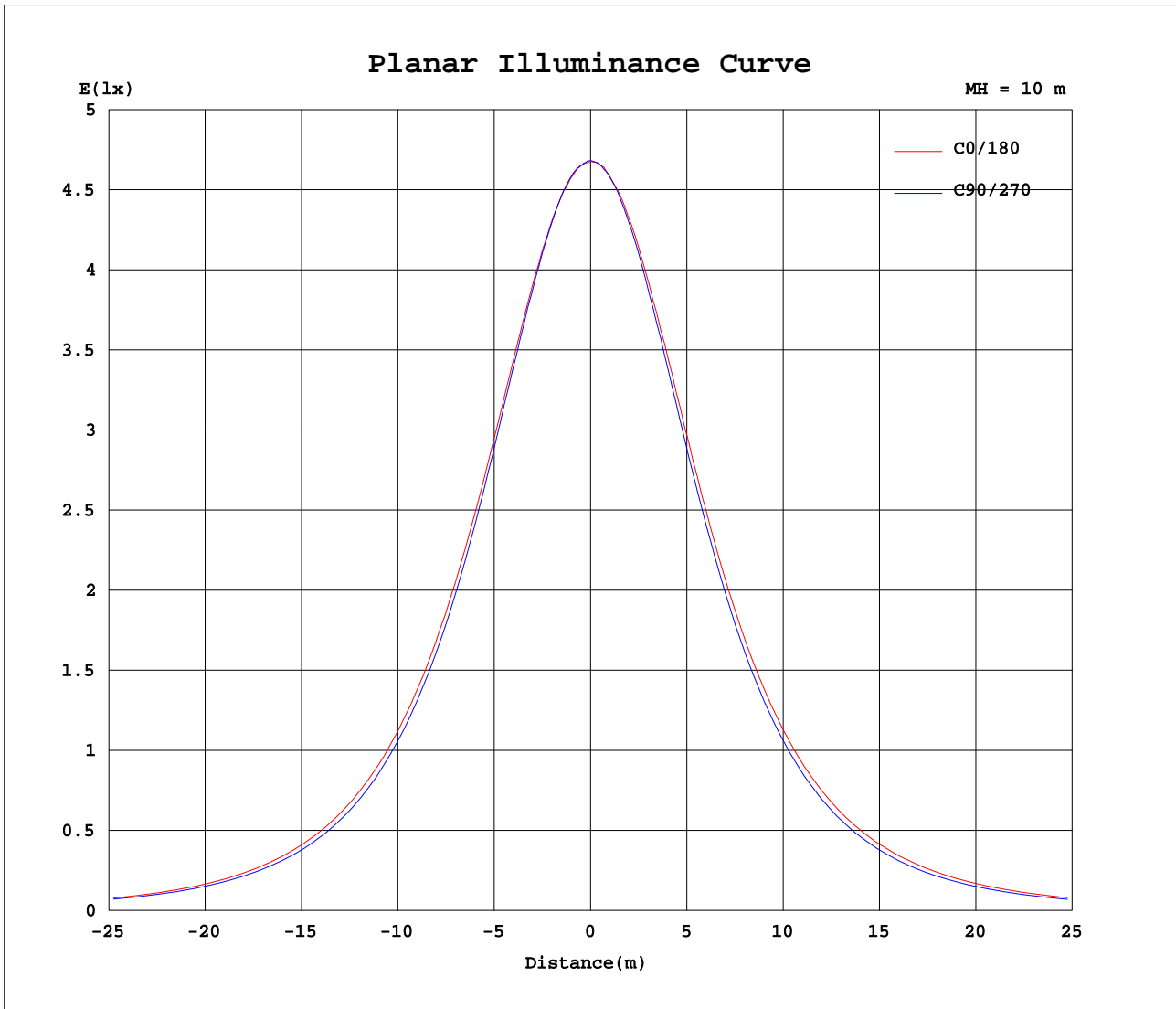
AvgL	cd/m2
L_0~180(65)av	16998
L_0~180(75)av	14949
L_0~180(85)av	11228
L_90~270(65)av	15258
L_90~270(75)av	13027
L_90~270(85)av	8725
L_45(65)av	16087
L_45(75)av	13987
L_45(85)av	9813

Standard: GB/T 29293-2012

C Range: 0 - 360DEG  
 C Interval: 22.5DEG  
 Test Speed: HIGH  
 Temperature:24.9DEG  
 Operators:Water  
 Test Date:2023-09-08

γ Range: 0 - 180DEG  
 γ Interval: 1.0DEG  
 Test System:EVERFINE GO-R5000\_V2 SYSTEM V2.00.446  
 Humidity:50%  
 Test Distance:2.513m [K=1.0000]  
 Remarks: Model No: UCL-31B-32G

**Planar Illuminance Curve**



C Range: 0 - 360DEG  
 C Interval: 22.5DEG  
 Test Speed: HIGH  
 Temperature: 24.9DEG  
 Operators: Water  
 Test Date: 2023-09-08

$\gamma$  Range: 0 - 180DEG  
 $\gamma$  Interval: 1.0DEG  
 Test System: EVERFINE GO-R5000\_V2 SYSTEM V2.00.446  
 Humidity: 50%  
 Test Distance: 2.513m [K=1.0000]  
 Remarks: Model No: UCL-31B-32G

LUMINOUS DISTRIBUTION INTENSITY DATA

Test:U:120.04V I:0.1488A P:16.750W PF:0.9377 Freq:60.00Hz Lamp Flux:1328.7x1 lm		
NAME: ASD-UCS-32D16CC	TYPE: N/A	WEIGHT: N/A
SPEC.: N/A	DIM.: N/A	SERIAL No.: N/A
MFR.: ASD Lighting Corp	SUR.: N/A	Shielding Angle: N/A

Table--1

UNIT: cd

C(DEG) γ (DEG)	0	22.5	45	67.5	90	112.5	135	157.5	180	202.5	225	247.5	270	292.5	315	337.5			
0	468	468	468	468	468	468	468	468	468	468	468	468	468	468	468	468			
5	466	465	465	467	466	466	465	465	466	465	465	466	466	465	466	466			
10	459	461	459	460	459	459	458	459	461	460	459	459	458	458	459	461			
15	449	450	448	448	447	447	447	449	452	450	448	446	447	447	448	449			
20	436	435	434	433	431	431	432	434	438	438	434	432	431	431	433	435			
25	418	417	415	412	411	411	414	416	422	420	416	413	410	411	413	417			
30	398	397	394	391	387	387	390	395	400	398	394	390	387	388	392	396			
35	374	372	367	363	360	362	366	371	376	375	370	364	360	361	366	372			
40	347	346	340	334	331	332	338	344	349	347	341	335	331	333	339	344			
45	317	314	309	302	300	302	307	314	320	317	310	304	300	302	308	314			
50	285	282	275	269	266	269	275	282	287	284	277	270	266	269	275	282			
55	250	247	241	234	231	234	240	247	253	249	241	235	231	234	240	248			
60	213	210	204	198	195	198	204	210	215	212	205	198	194	196	203	211			
65	174	172	166	161	158	161	166	172	177	174	166	159	156	159	165	173			
70	132	132	127	123	121	123	127	132	137	133	126	120	117	119	125	132			
75	92.5	91.9	89.0	85.5	84.0	85.9	89.4	92.9	96.3	93.6	88.0	82.7	80.5	82.1	86.9	92.2			
80	54.8	54.8	52.8	50.9	49.9	51.2	53.6	55.6	58.6	56.5	51.9	48.0	46.2	47.4	50.9	54.9			
85	22.0	22.3	21.4	20.4	19.9	20.7	22.1	23.5	25.7	24.0	20.6	18.4	17.2	17.8	19.4	22.6			
90	0.10	2.28	0.08	0.07	0.07	0.07	0.09	2.55	1.07	0.41	0.03	0.03	0.02	0.02	0.03	0.08			
95	0.10	0.12	0.13	0.09	0.09	0.09	0.12	0.12	0.04	0.03	0.03	0.03	0.03	0.03	0.03	0.03			
100	0.11	0.13	0.13	0.13	0.12	0.12	0.13	0.12	0.05	0.05	0.05	0.05	0.05	0.05	0.05	0.05			
105	0.13	0.13	0.13	0.13	0.13	0.13	0.13	0.13	0.06	0.06	0.07	0.06	0.06	0.06	0.06	0.06			
110	0.14	0.14	0.15	0.15	0.15	0.15	0.15	0.14	0.08	0.08	0.08	0.08	0.08	0.08	0.08	0.08			
115	0.16	0.17	0.17	0.16	0.17	0.17	0.17	0.17	0.10	0.10	0.10	0.10	0.10	0.10	0.09	0.10			
120	0.19	0.20	0.20	0.19	0.20	0.20	0.20	0.20	0.12	0.12	0.12	0.12	0.12	0.11	0.11	0.12			
125	0.23	0.24	0.24	0.24	0.24	0.24	0.24	0.23	0.15	0.15	0.15	0.15	0.14	0.14	0.14	0.14			
130	0.28	0.29	0.28	0.29	0.30	0.29	0.29	0.28	0.18	0.17	0.17	0.17	0.16	0.17	0.16	0.17			
135	0.34	0.35	0.35	0.36	0.37	0.36	0.35	0.34	0.20	0.20	0.20	0.20	0.20	0.20	0.19	0.20			
140	0.43	0.44	0.47	0.47	0.47	0.47	0.46	0.42	0.23	0.22	0.23	0.23	0.23	0.22	0.22	0.23			
145	0.52	0.55	0.59	0.60	0.61	0.60	0.57	0.52	0.26	0.26	0.26	0.28	0.27	0.27	0.26	0.27			
150	0.60	0.64	0.68	0.70	0.70	0.70	0.66	0.62	0.28	0.28	0.30	0.30	0.30	0.30	0.29	0.30			
155	0.69	0.74	0.76	0.79	0.80	0.78	0.74	0.71	0.32	0.31	0.34	0.34	0.33	0.34	0.33	0.36			
160	0.76	0.79	0.81	0.84	0.82	0.83	0.79	0.75	0.39	0.38	0.38	0.38	0.37	0.38	0.37	0.40			
165	0.77	0.78	0.80	0.82	0.83	0.81	0.79	0.76	0.43	0.43	0.41	0.43	0.40	0.41	0.40	0.43			
170	0.74	0.74	0.75	0.75	0.75	0.73	0.74	0.74	0.48	0.48	0.46	0.45	0.43	0.41	0.43	0.46			
175	0.70	0.70	0.70	0.68	0.67	0.67	0.69	0.69	0.54	0.54	0.52	0.50	0.48	0.46	0.48	0.52			
180	0.62	0.62	0.59	0.57	0.57	0.58	0.61	0.63	0.62	0.63	0.61	0.59	0.57	0.56	0.58	0.61			

C Range: 0 - 360DEG  
 C Interval: 22.5DEG  
 Test Speed: HIGH  
 Temperature:24.9DEG  
 Operators:Water  
 Test Date:2023-09-08

γ Range: 0 - 180DEG  
 γ Interval: 1.0DEG  
 Test System:EVERFINE GO-R5000\_V2 SYSTEM V2.00.446  
 Humidity:50%  
 Test Distance:2.513m [K=1.0000]  
 Remarks: Model No: UCL-31B-32G