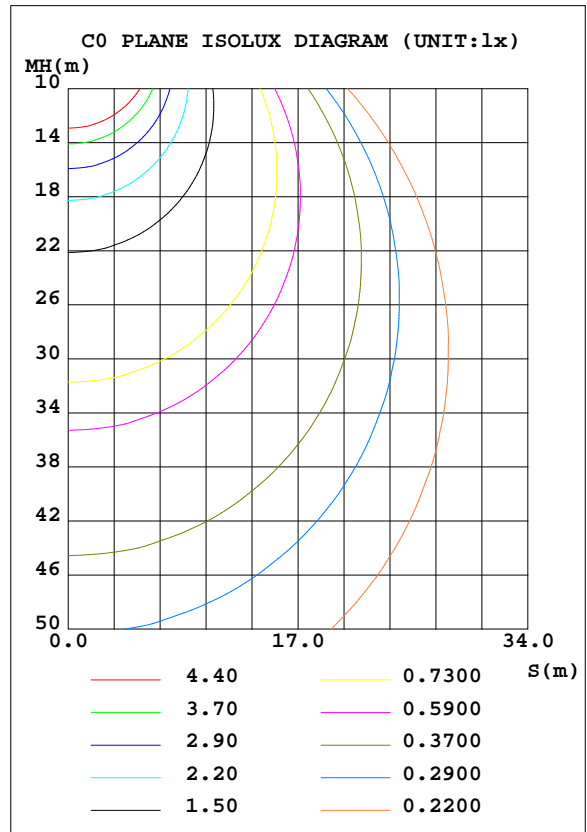
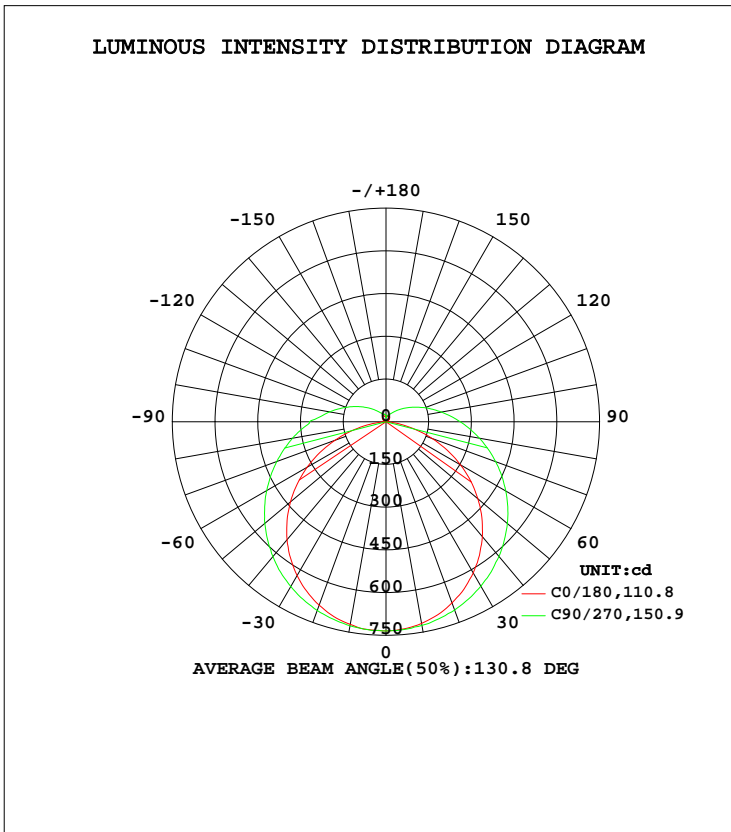


LUMINAIRE PHOTOMETRIC TEST REPORT

Test:U:120.03V I:0.2657A P:30W PF:0.9194 Freq:60.00Hz Lamp Flux:2535x1 lm		
NAME: ASD-LVF21-36D30CC-NK/BK 5000K	TYPE:N/A	WEIGHT:N/A
SPEC.:N/A	DIM.: N/A	SERIAL No.:N/A
MFR.: ASD Lighting corp	SUR.:N/A	Shielding Angle:N/A

DATA OF LAMP		PHOTOMETRIC DATA Eff: 84.5 lm/W			
MODEL	ASD-LVF21-36D30CC-NK/BK 5000K	Imax(cd)	735.2	S/MH(C0/180)	1.24
NOMINAL POWER(W)		LOR(%)	100.0	S/MH(C90/270)	1.36
RATED VOLTAGE(V)	120	TOTAL FLUX(lm)	2535	$\eta$ UP, DN(C0-180)	7.0,43.3
NOMINAL FLUX(lm)	2535	CIE CLASS	SEMI-D.	$\eta$ UP, DN(C180-360)	6.7,43.0
LAMPS INSIDE	1	$\eta$ up(%)	13.7	CIBSE SHR NOM	1.50
TEST VOLTAGE(V)	120	$\eta$ down(%)	86.3	CIBSE SHR MAX	1.50



C Range: 0 - 360DEG  
 C Interval: 22.5DEG  
 Test Speed: HIGH  
 Temperature:24.6DEG  
 Operators:Hill  
 Test Date:2022-05-21

$\gamma$  Range: 0 - 180DEG  
 $\gamma$  Interval: 1.0DEG  
 Test System:EVERFINE GO-R5000\_V2 SYSTEM V2.0.351  
 Humidity:40%  
 Test Distance:2.526m [K=1.0000]  
 Remarks:

## ZONAL FLUX DIAGRAM

## ZONAL FLUX DIAGRAM:

$\gamma$	C0	C45	C90	C135	C180	C225	C270	C315	$\gamma$	$\Phi$ zone	$\Phi$ total	%lum,lamp
10	722.7	727.0	727.4	724.2	719.1	723.4	726.0	723.6	0- 10	69.59	69.59	2.3,2.3
20	685.5	697.7	705.2	692.0	677.2	691.9	703.7	693.0	10- 20	200.8	270.4	8.94,8.94
30	623.9	648.9	668.2	641.2	612.7	641.0	666.9	642.1	20- 30	309.1	579.5	19.2,19.2
40	540.3	583.2	617.8	574.0	526.5	574.7	617.5	575.3	30- 40	382.7	962.2	31.8,31.8
50	438.1	504.1	555.4	492.5	421.1	495.5	556.2	495.9	40- 50	414.3	1376	45.5,45.5
60	319.9	416.6	483.8	403.7	301.6	408.7	485.5	408.4	50- 60	402.6	1779	58.8,58.8
70	191.2	326.9	408.1	314.4	173.0	320.5	409.6	319.1	60- 70	352.8	2132	70.5,70.5
80	67.86	244.9	333.3	233.0	52.64	238.7	333.0	235.9	70- 80	278.3	2410	79.7,79.7
90	0.5151	178.3	269.2	167.6	0.1373	169.8	260.9	166.2	80- 90	200.4	2610	86.3,86.3
100	1.425	124.6	201.2	115.6	1.744	116.6	197.7	112.8	90-100	141.2	2752	91,91
110	5.851	84.63	149.0	79.44	6.425	79.65	145.0	76.25	100-110	97.35	2849	94.2,94.2
120	10.71	58.24	106.5	54.92	11.45	54.91	102.0	52.21	110-120	65.45	2914	96.3,96.3
130	15.62	41.27	74.16	39.76	16.24	38.94	70.23	37.21	120-130	43.20	2958	97.8,97.8
140	20.09	32.09	50.49	31.53	20.30	28.90	47.47	28.84	130-140	28.18	2986	98.7,98.7
150	23.80	27.73	36.30	27.82	23.59	23.54	32.57	25.66	140-150	18.47	3004	99.3,99.3
160	22.65	26.22	28.85	25.80	21.95	20.30	25.08	23.70	150-160	12.04	3016	99.7,99.7
170	18.68	26.14	27.61	22.30	18.36	19.07	23.00	23.89	160-170	6.717	3023	99.9,99.9
180	22.88	22.55	12.38	20.70	22.58	22.05	17.24	18.55	170-180	2.085	3025	100,100
DEG	LUMINOUS INTENSITY:cd									UNIT:lm		

Conical surface Flux(90deg): 1168.1 lm

%lum = 38.6%

%lamp = 38.6%

Conical surface Flux(120deg): 1779 lm

%lum = 58.8%

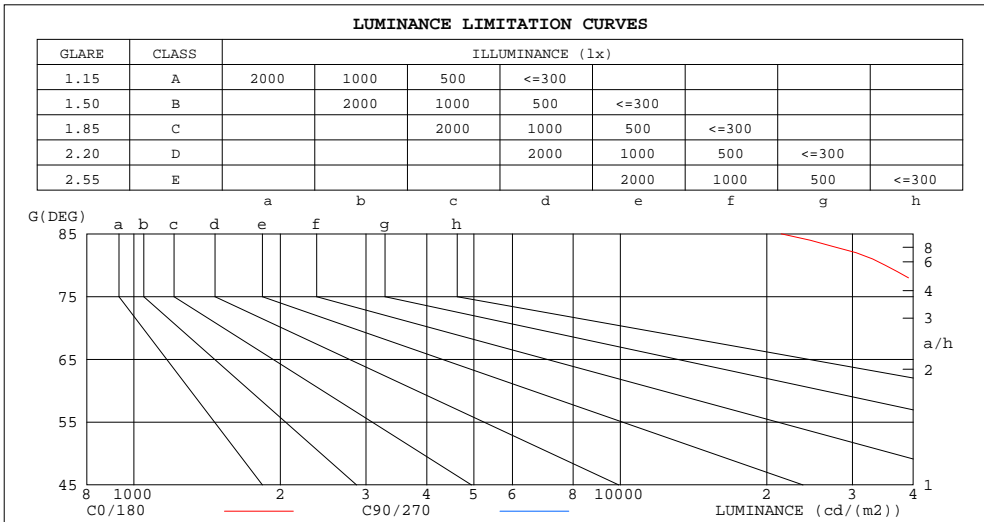
%lamp = 58.8%

C Range: 0 - 360DEG  
 C Interval: 22.5DEG  
 Test Speed: HIGH  
 Temperature:24.6DEG  
 Operators:Hill  
 Test Date:2022-05-21

$\gamma$  Range: 0 - 180DEG  
 $\gamma$  Interval: 1.0DEG  
 Test System:EVERFINE GO-R5000\_V2 SYSTEM V2.0.351  
 Humidity:40%  
 Test Distance:2.526m [K=1.0000]  
 Remarks:

LUMINANCE LIMITATION CURVES

Test:U:120.03V I:0.2657A P:30W PF:0.9194 Freq:60.00Hz Lamp Flux:2535x1 lm		
NAME: ASD-LVF21-36D30CC-NK/BK 5000K	TYPE:N/A	WEIGHT:N/A
SPEC.:N/A	DIM.: N/A	SERIAL No.:N/A
MFR.: ASD Lighting corp	SUR.:N/A	Shielding Angle:N/A



LUMINANCE cd/(m2)		
G(DEG)	C0/180	C90/270
85	21418	304709
80	35012	171949
75	44005	128184
70	50086	106891
65	54307	94523
60	57324	86666
55	59426	81273
50	61062	77398
45	62314	74426

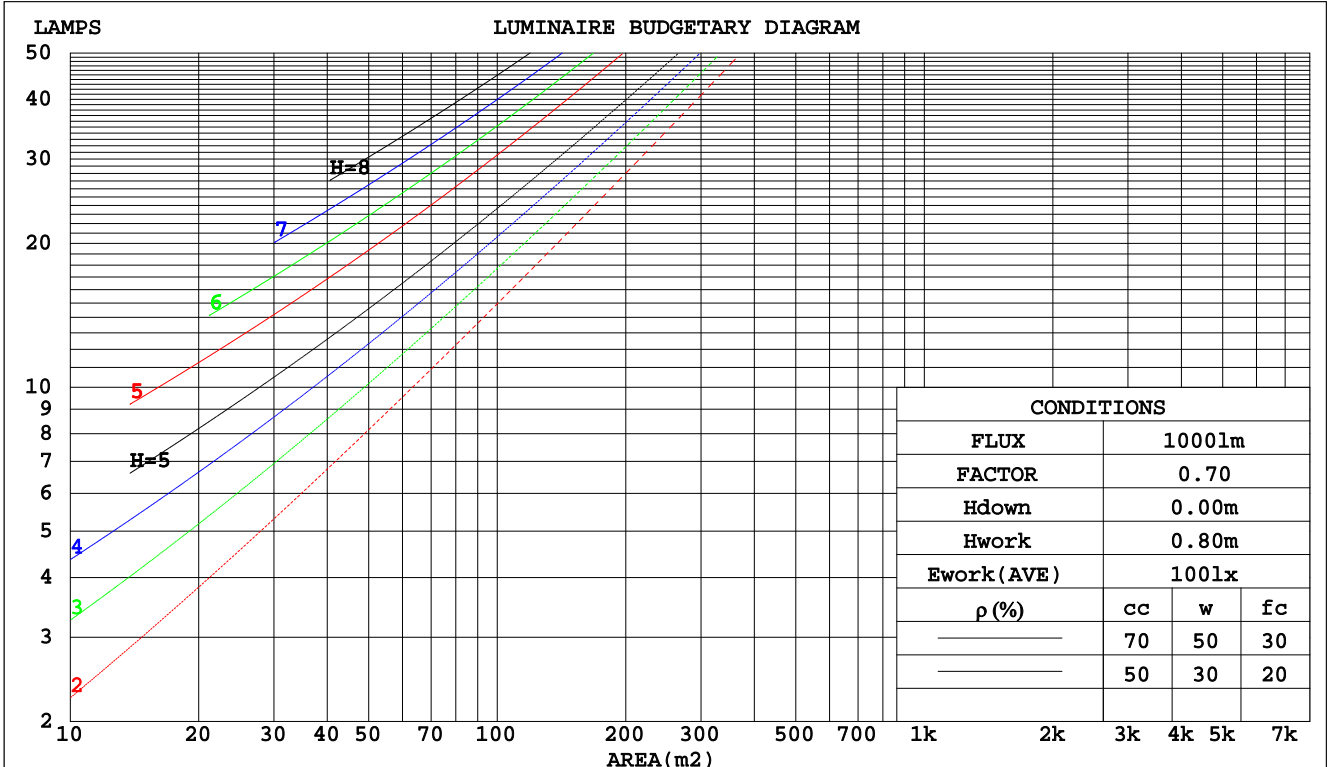
C Range: 0 - 360DEG  
 C Interval: 22.5DEG  
 Test Speed: HIGH  
 Temperature:24.6DEG  
 Operators:Hill  
 Test Date:2022-05-21

γ Range: 0 - 180DEG  
 γ Interval: 1.0DEG  
 Test System:EVERFINE GO-R5000\_V2 SYSTEM V2.0.351  
 Humidity:40%  
 Test Distance:2.526m [K=1.0000]  
 Remarks:

CU AND LUMINAIRE BUDGETARY ESTIMATE DIAGRAM

Test:U:120.03V I:0.2657A P:30W PF:0.9194 Freq:60.00Hz Lamp Flux:2535x1 lm		
NAME: ASD-LVF21-36D30CC-NK/BK 5000K	TYPE:N/A	WEIGHT:N/A
SPEC.:N/A	DIM.: N/A	SERIAL No.:N/A
MFR.: ASD Lighting corp	SUR.:N/A	Shielding Angle:N/A

pcc	80%			70%			50%			30%			10%			0
	50%	30%	10%	50%	30%	10%	50%	30%	10%	50%	30%	10%	50%	30%	10%	0
pw																0
pfc	20%			20%			20%			20%			20%			0
RCR	RCR:Room Cavity Ratio      Coefficients of Utilization(CU)															
0.0	1.16	1.16	1.16	1.11	1.11	1.11	1.03	1.03	1.03	.96	.96	.96	.89	.89	.89	.86
1.0	.97	.92	.87	.94	.89	.85	.87	.83	.79	.80	.77	.75	.75	.72	.70	.67
2.0	.83	.76	.69	.80	.73	.67	.74	.69	.64	.69	.64	.60	.64	.60	.57	.54
3.0	.72	.64	.56	.70	.62	.55	.65	.58	.52	.60	.54	.50	.56	.51	.47	.44
4.0	.64	.54	.47	.61	.53	.46	.57	.50	.44	.53	.47	.42	.49	.44	.40	.37
5.0	.57	.47	.40	.55	.46	.39	.51	.43	.38	.47	.41	.36	.44	.39	.34	.32
6.0	.51	.41	.35	.49	.40	.34	.46	.38	.33	.43	.36	.31	.40	.34	.30	.27
7.0	.46	.37	.30	.44	.36	.30	.42	.34	.29	.39	.32	.28	.36	.31	.26	.24
8.0	.42	.33	.27	.40	.32	.26	.38	.31	.25	.36	.29	.24	.33	.28	.24	.21
9.0	.38	.30	.24	.37	.29	.24	.35	.28	.23	.33	.26	.22	.31	.25	.21	.19
10.0	.35	.27	.22	.34	.26	.21	.32	.25	.21	.30	.24	.20	.29	.23	.19	.17



C Range: 0 - 360DEG  
 C Interval: 22.5DEG  
 Test Speed: HIGH  
 Temperature:24.6DEG  
 Operators:Hill  
 Test Date:2022-05-21

γ Range: 0 - 180DEG  
 γ Interval: 1.0DEG  
 Test System:EVERFINE GO-R5000\_V2 SYSTEM V2.0.351  
 Humidity:40%  
 Test Distance:2.526m [K=1.0000]  
 Remarks:

WEC AND CCEC

Test:U:120.03V I:0.2657A P:30W PF:0.9194 Freq:60.00Hz Lamp Flux:2535x1 lm		
NAME: ASD-LVF21-36D30CC-NK/BK 5000K	TYPE:N/A	WEIGHT:N/A
SPEC.:N/A	DIM.: N/A	SERIAL No.:N/A
MFR.: ASD Lighting corp	SUR.:N/A	Shielding Angle:N/A

ρcc	80%			70%			50%			30%			10%			0
ρw	50%	30%	10%	50%	30%	10%	50%	30%	10%	50%	30%	10%	50%	30%	10%	0
ρfc	20%			20%			20%			20%			20%			0
RCR	RCR:Room Cavity Ratio						Wall Exitance Coefficients(WEC)									
0.0																
1.0	.374	.213	.067	.363	.207	.066	.341	.196	.063	.322	.186	.060	.304	.176	.057	
2.0	.328	.180	.055	.317	.175	.054	.298	.166	.051	.280	.157	.049	.264	.149	.047	
3.0	.293	.156	.047	.284	.152	.046	.266	.144	.044	.250	.137	.042	.235	.130	.040	
4.0	.265	.137	.040	.256	.134	.040	.241	.128	.038	.226	.121	.037	.212	.115	.035	
5.0	.241	.123	.036	.234	.120	.035	.219	.114	.034	.206	.109	.032	.194	.104	.031	
6.0	.221	.111	.032	.214	.108	.031	.202	.103	.030	.190	.098	.029	.178	.094	.028	
7.0	.204	.101	.029	.198	.099	.028	.186	.094	.027	.175	.090	.026	.165	.086	.025	
8.0	.190	.093	.026	.184	.091	.026	.173	.087	.025	.163	.083	.024	.154	.079	.023	
9.0	.177	.086	.024	.172	.084	.023	.162	.080	.023	.153	.077	.022	.144	.073	.021	
10.0	.166	.079	.022	.161	.078	.022	.152	.074	.021	.143	.071	.020	.135	.068	.020	

ρcc	80%			70%			50%			30%			10%			0
ρw	50%	30%	10%	50%	30%	10%	50%	30%	10%	50%	30%	10%	50%	30%	10%	0
ρfc	20%			20%			20%			20%			20%			0
RCR	RCR:Room Cavity Ratio						Ceiling Cavity Exitance Coefficients(CCEC)									
0.0	.295	.295	.295	.252	.252	.252	.172	.172	.172	.099	.099	.099	.032	.032	.032	
1.0	.290	.261	.235	.248	.224	.202	.170	.154	.140	.098	.089	.081	.031	.029	.026	
2.0	.283	.238	.200	.242	.205	.173	.166	.142	.120	.096	.082	.071	.031	.027	.023	
3.0	.275	.221	.178	.236	.191	.154	.162	.132	.108	.094	.077	.064	.030	.025	.021	
4.0	.268	.208	.163	.230	.180	.142	.158	.125	.100	.091	.074	.059	.029	.024	.019	
5.0	.260	.198	.153	.223	.172	.133	.154	.120	.094	.089	.070	.056	.029	.023	.018	
6.0	.253	.190	.146	.217	.165	.127	.150	.115	.090	.087	.068	.053	.028	.022	.018	
7.0	.246	.184	.140	.211	.159	.122	.146	.112	.087	.085	.066	.052	.027	.022	.017	
8.0	.239	.178	.136	.206	.155	.119	.142	.108	.084	.083	.064	.050	.027	.021	.017	
9.0	.233	.173	.133	.200	.150	.116	.139	.106	.083	.081	.062	.049	.026	.020	.016	
10.0	.227	.169	.131	.195	.147	.114	.136	.103	.081	.079	.061	.048	.026	.020	.016	

C Range: 0 - 360DEG  
 C Interval: 22.5DEG  
 Test Speed: HIGH  
 Temperature:24.6DEG  
 Operators:Hill  
 Test Date:2022-05-21

γ Range: 0 - 180DEG  
 γ Interval: 1.0DEG  
 Test System:EVERFINE GO-R5000\_V2 SYSTEM V2.0.351  
 Humidity:40%  
 Test Distance:2.526m [K=1.0000]  
 Remarks:

UGR(Unified Glare Rating) Table

Test:U:120.03V I:0.2657A P:30W PF:0.9194 Freq:60.00Hz Lamp Flux:2535x1 lm		
NAME: ASD-LVF21-36D30CC-NK/BK 5000K	TYPE:N/A	WEIGHT:N/A
SPEC.:N/A	DIM.: N/A	SERIAL No.:N/A
MFR.: ASD Lighting corp	SUR.:N/A	Shielding Angle:N/A

ceiling/cavity	0.7	0.7	0.5	0.5	0.3	0.7	0.7	0.5	0.5	0.3
walls	0.5	0.3	0.5	0.3	0.3	0.5	0.3	0.5	0.3	0.3
working plane	0.2	0.2	0.2	0.2	0.2	0.2	0.2	0.2	0.2	0.2
Room dimensions	Viewed crosswise					Viewed endwise				
x = 2H y = 2H	22.2	23.6	22.6	24.0	24.5	23.8	25.3	24.3	25.7	26.2
3H	23.6	25.0	24.1	25.4	25.9	26.4	27.7	26.8	28.1	28.7
4H	24.2	25.5	24.7	25.9	26.5	27.7	29.0	28.2	29.5	30.0
6H	24.6	25.8	25.1	26.3	26.8	29.2	30.4	29.7	30.9	31.5
8H	24.7	25.8	25.2	26.3	26.9	30.0	31.2	30.6	31.7	32.3
12H	24.7	25.8	25.2	26.3	26.9	31.0	32.1	31.5	32.6	33.2
4H 2H	23.2	24.4	23.7	24.9	25.5	24.4	25.7	24.9	26.2	26.7
3H	24.9	26.0	25.5	26.5	27.1	27.2	28.3	27.7	28.8	29.4
4H	25.7	26.7	26.2	27.2	27.8	28.7	29.7	29.3	30.3	30.9
6H	26.2	27.1	26.8	27.7	28.4	30.5	31.3	31.0	31.9	32.6
8H	26.4	27.3	27.0	27.8	28.5	31.4	32.2	32.0	32.8	33.5
12H	26.5	27.3	27.1	27.9	28.6	32.5	33.3	33.1	33.9	34.6
8H 4H	26.6	27.4	27.2	28.0	28.7	29.1	29.9	29.7	30.5	31.2
6H	27.5	28.2	28.2	28.9	29.6	31.1	31.8	31.7	32.4	33.1
8H	27.9	28.5	28.6	29.2	29.9	32.3	32.9	32.9	33.5	34.3
12H	28.2	28.7	28.9	29.4	30.2	33.6	34.2	34.3	34.8	35.6
12H 4H	26.9	27.7	27.5	28.3	29.0	29.1	29.9	29.7	30.5	31.2
6H	28.0	28.7	28.7	29.3	30.1	31.2	31.8	31.9	32.5	33.2
8H	28.6	29.1	29.3	29.8	30.6	32.5	33.0	33.2	33.7	34.5
Variations with the observer position at spacings:										
S = 1.0H	+ 0.1 / - 0.1					+ 0.1 / - 0.1				
1.5H	+ 0.2 / - 0.3					+ 0.2 / - 0.3				
2.0H	+ 0.2 / - 0.4					+ 0.2 / - 0.4				

CIE Pub.117, 3025 lm Total Lamp Luminous Flux Correct (8log(F/F0) = 3.8)

C Range: 0 - 360DEG  
 C Interval: 22.5DEG  
 Test Speed: HIGH  
 Temperature:24.6DEG  
 Operators:Hill  
 Test Date:2022-05-21

γ Range: 0 - 180DEG  
 γ Interval: 1.0DEG  
 Test System:EVERFINE GO-R5000\_V2 SYSTEM V2.0.351  
 Humidity:40%  
 Test Distance:2.526m [K=1.0000]  
 Remarks:

## UTILIZATION FACTORS TABLE

Test:U:120.03V I:0.2657A P:30W PF:0.9194 Freq:60.00Hz Lamp Flux:2535x1 lm		
NAME: ASD-LVF21-36D30CC-NK/BK 5000K	TYPE:N/A	WEIGHT:N/A
SPEC.:N/A	DIM.: N/A	SERIAL No.:N/A
MFR.: ASD Lighting corp	SUR.:N/A	Shielding Angle:N/A

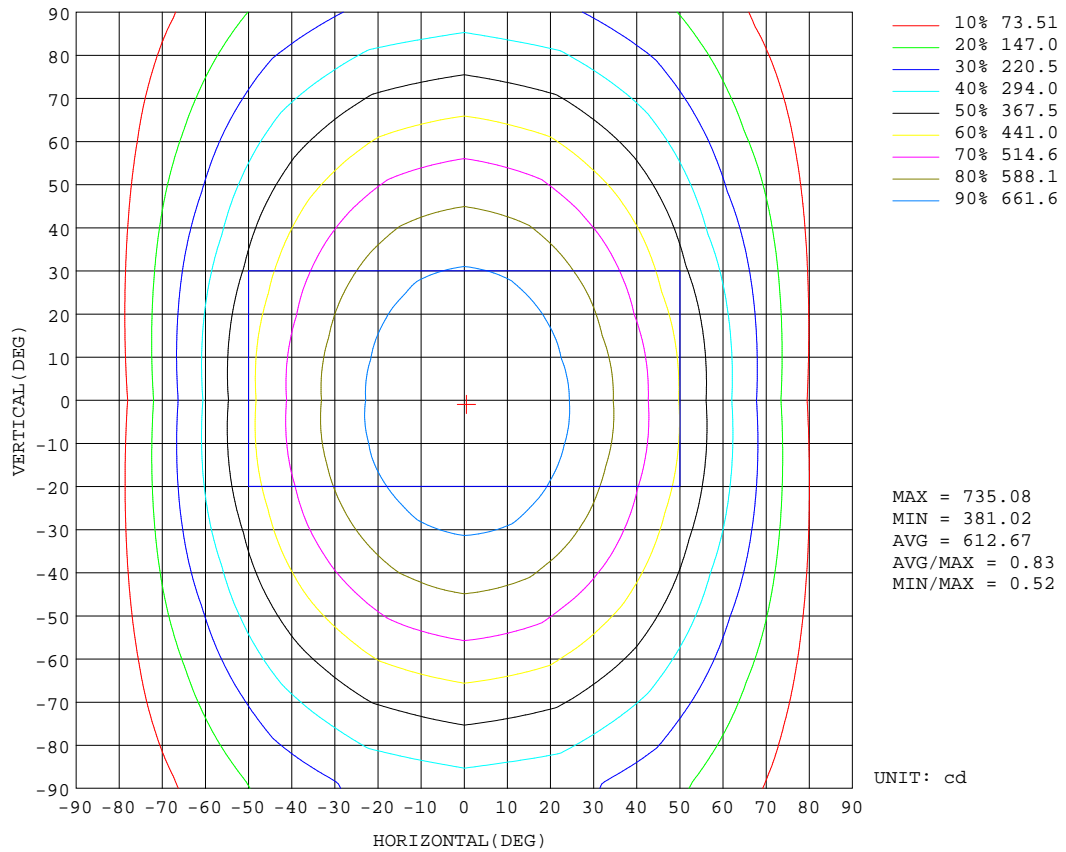
REFLECTANCE										
Ceiling	0.8	0.8	0.8	0.7	0.7	0.7	0.5	0.5	0.5	0
Walls	0.7	0.5	0.3	0.7	0.5	0.3	0.7	0.5	0.3	0
Working plane	0.2	0.2	0.2	0.2	0.2	0.2	0.2	0.2	0.2	0
ROOM INDEX	UTILIZATION FACTORS(PERCENT) $k(RI) \times RCR = 5$									
k = 0.60	50	37	30	49	37	30	47	36	30	23
0.80	59	46	38	58	46	38	55	44	37	30
1.00	67	54	46	65	53	46	62	54	45	36
1.25	74	62	53	72	60	53	68	58	51	42
1.50	79	67	59	76	66	58	72	63	56	46
2.00	86	76	68	83	74	66	78	70	64	53
2.50	91	81	73	87	79	72	82	74	69	57
3.00	94	85	78	91	83	76	85	78	73	61
4.00	99	91	85	95	88	83	89	83	79	65
5.00	102	95	90	98	92	87	91	86	82	69
ROOM INDEX	UF(total)									Direct
According to DIN EN 13032-2 2004			Suspended				SHRNOM = 1.25			

C Range: 0 - 360DEG  
 C Interval: 22.5DEG  
 Test Speed: HIGH  
 Temperature:24.6DEG  
 Operators:Hill  
 Test Date:2022-05-21

$\gamma$  Range: 0 - 180DEG  
 $\gamma$  Interval: 1.0DEG  
 Test System:EVERFINE GO-R5000\_V2 SYSTEM V2.0.351  
 Humidity:40%  
 Test Distance:2.526m [K=1.0000]  
 Remarks:

ISOCANDELA DIAGRAM

Test:U:120.03V I:0.2657A P:30W PF:0.9194 Freq:60.00Hz Lamp Flux:2535x1 lm		
NAME: ASD-LVF21-36D30CC-NK/BK 5000K	TYPE:N/A	WEIGHT:N/A
SPEC.:N/A	DIM.: N/A	SERIAL No.:N/A
MFR.: ASD Lighting corp	SUR.:N/A	Shielding Angle:N/A



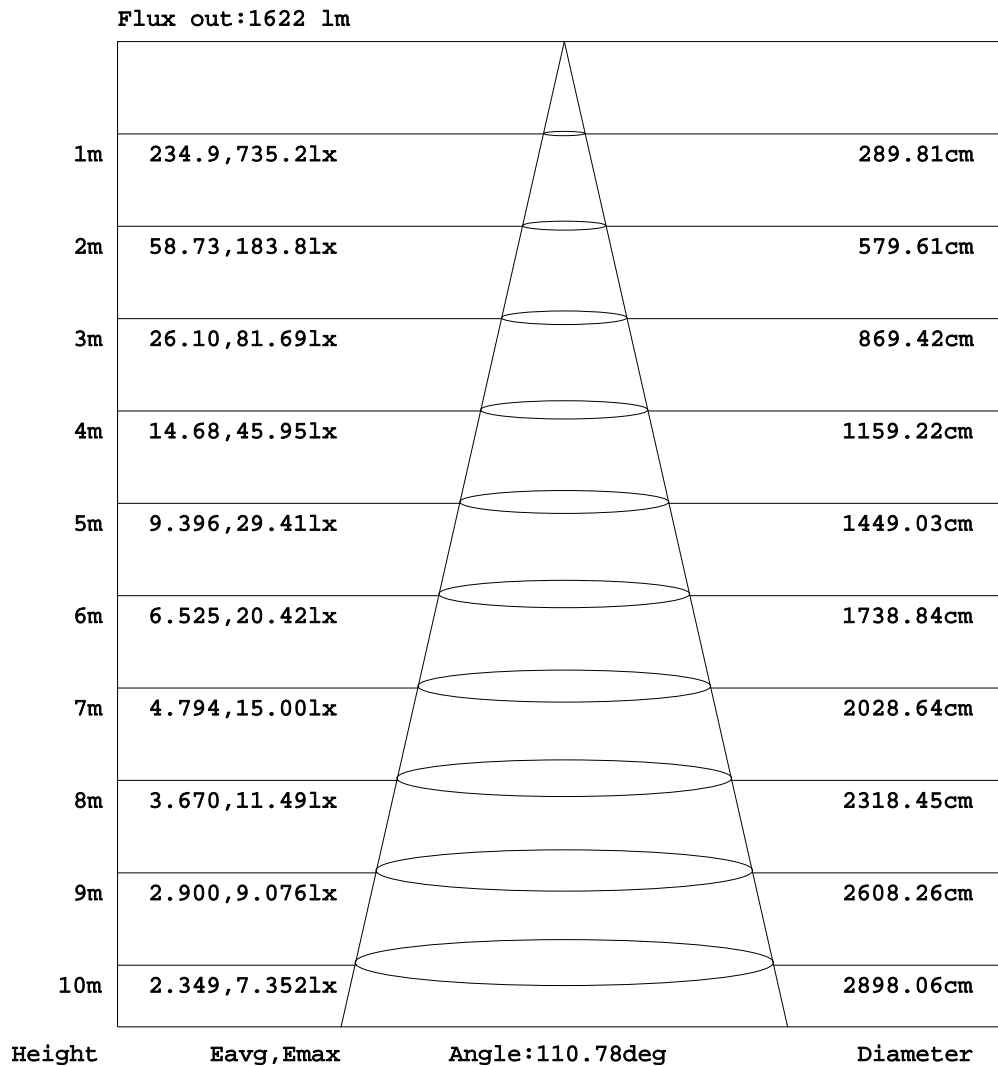
C Range: 0 - 360DEG  
 C Interval: 22.5DEG  
 Test Speed: HIGH  
 Temperature:24.6DEG  
 Operators:Hill  
 Test Date:2022-05-21

γ Range: 0 - 180DEG  
 γ Interval: 1.0DEG  
 Test System:EVERFINE GO-R5000\_V2 SYSTEM V2.0.351  
 Humidity:40%  
 Test Distance:2.526m [K=1.0000]  
 Remarks:



AAI Figure

Test:U:120.03V I:0.2657A P:30W PF:0.9194 Freq:60.00Hz Lamp Flux:2535x1 lm		
NAME: ASD-LVF21-36D30CC-NK/BK 5000K	TYPE:N/A	WEIGHT:N/A
SPEC.:N/A	DIM.: N/A	SERIAL No.:N/A
MFR.: ASD Lighting corp	SUR.:N/A	Shielding Angle:N/A



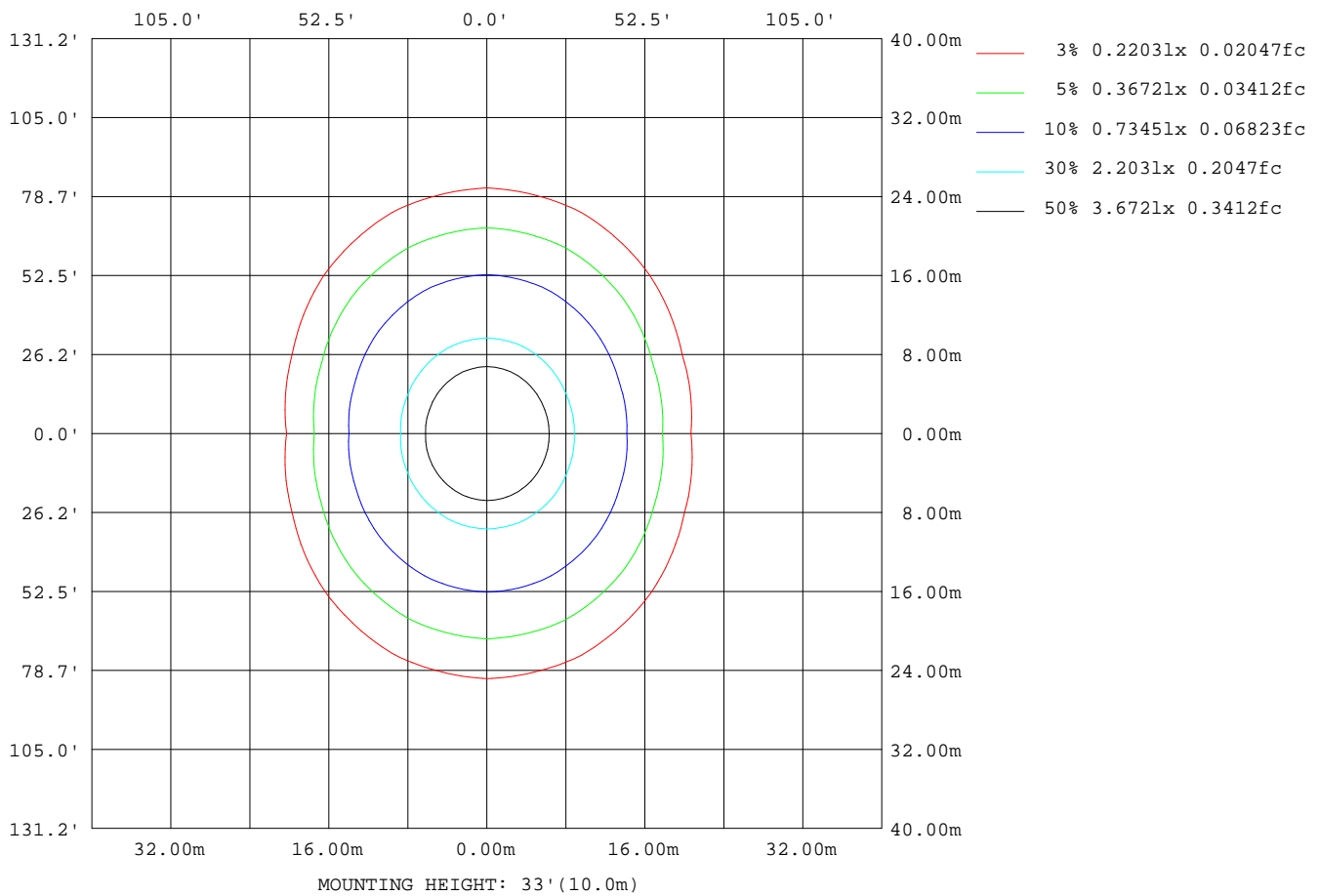
Note:The Curves indicate the illuminated area and the average illumination when the luminaire is at different distance.

C Range: 0 - 360DEG  
 C Interval: 22.5DEG  
 Test Speed: HIGH  
 Temperature:24.6DEG  
 Operators:Hill  
 Test Date:2022-05-21

γ Range: 0 - 180DEG  
 γ Interval: 1.0DEG  
 Test System:EVERFINE GO-R5000\_V2 SYSTEM V2.0.351  
 Humidity:40%  
 Test Distance:2.526m [K=1.0000]  
 Remarks:

ISOLUX DIAGRAM

Test:U:120.03V I:0.2657A P:30W PF:0.9194 Freq:60.00Hz Lamp Flux:2535x1 lm		
NAME: ASD-LVF21-36D30CC-NK/BK 5000K	TYPE:N/A	WEIGHT:N/A
SPEC.:N/A	DIM.: N/A	SERIAL No.:N/A
MFR.: ASD Lighting corp	SUR.:N/A	Shielding Angle:N/A



C Range: 0 - 360DEG  
 C Interval: 22.5DEG  
 Test Speed: HIGH  
 Temperature:24.6DEG  
 Operators:Hill  
 Test Date:2022-05-21

$\gamma$  Range: 0 - 180DEG  
 $\gamma$  Interval: 1.0DEG  
 Test System:EVERFINE GO-R5000\_V2 SYSTEM V2.0.351  
 Humidity:40%  
 Test Distance:2.526m [K=1.0000]  
 Remarks:

## LED Avg.L Report

Test:U:120.03V I:0.2657A P:30W PF:0.9194 Freq:60.00Hz Lamp Flux:2535x1 lm		
NAME: ASD-LVF21-36D30CC-NK/BK 5000K	TYPE:N/A	WEIGHT:N/A
SPEC.:N/A	DIM.: N/A	SERIAL No.:N/A
MFR.: ASD Lighting corp	SUR.:N/A	Shielding Angle:N/A

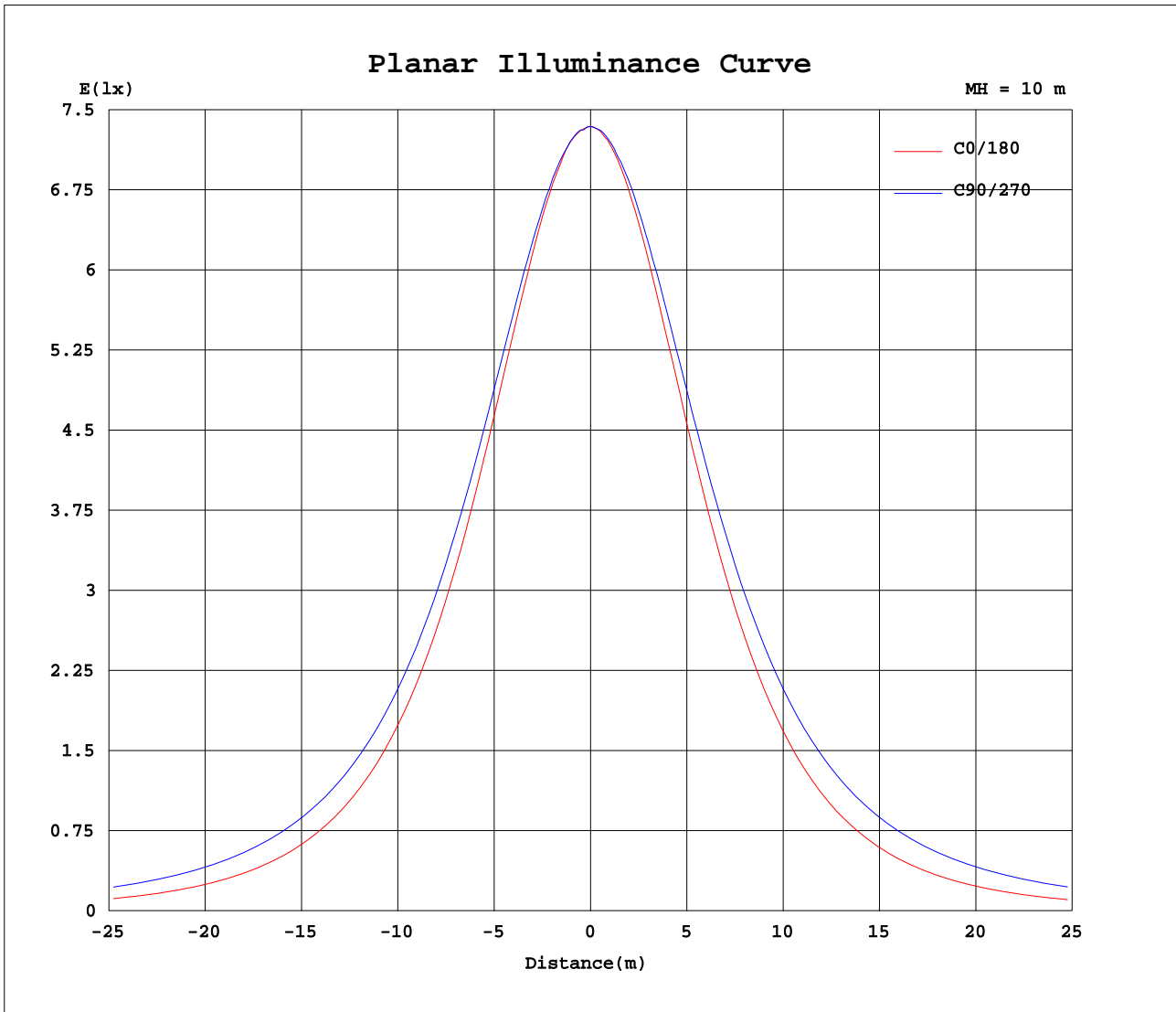
AvgL	cd/m2
L_0~180(65)av	52373
L_0~180(75)av	40900
L_0~180(85)av	17471
L_90~270(65)av	94838
L_90~270(75)av	128388
L_90~270(85)av	304600
L_45(65)av	77245
L_45(75)av	96206
L_45(85)av	207622

Standard: GB/T 29293-2012

C Range: 0 - 360DEG  
C Interval: 22.5DEG  
Test Speed: HIGH  
Temperature:24.6DEG  
Operators:Hill  
Test Date:2022-05-21

$\gamma$  Range: 0 - 180DEG  
 $\gamma$  Interval: 1.0DEG  
Test System:EVERFINE GO-R5000\_V2 SYSTEM V2.0.351  
Humidity:40%  
Test Distance:2.526m [K=1.0000]  
Remarks:

Planar Illuminance Curve



C Range: 0 - 360DEG  
 C Interval: 22.5DEG  
 Test Speed: HIGH  
 Temperature: 24.6DEG  
 Operators: Hill  
 Test Date: 2022-05-21

$\gamma$  Range: 0 - 180DEG  
 $\gamma$  Interval: 1.0DEG  
 Test System: EVERFINE GO-R5000\_V2 SYSTEM V2.0.351  
 Humidity: 40%  
 Test Distance: 2.526m [K=1.0000]  
 Remarks:

LUMINOUS DISTRIBUTION INTENSITY DATA

Test:U:120.03V I:0.2657A P:30W PF:0.9194 Freq:60.00Hz Lamp Flux:2535x1 lm		
NAME: ASD-LVF21-36D30CC-NK/BK 5000K	TYPE:N/A	WEIGHT:N/A
SPEC.:N/A	DIM.: N/A	SERIAL No.:N/A
MFR.: ASD Lighting corp	SUR.:N/A	Shielding Angle:N/A

Table--1

UNIT: cd

C( DEG) γ (DEG)	0	22.5	45	67.5	90	112.5	135	157.5	180	202.5	225	247.5	270	292.5	315	337.5			
0	735	735	735	735	735	735	735	735	735	735	735	735	735	735	735	735			
5	732	732	733	732	733	733	733	731	730	730	731	731	732	732	733	731			
10	723	724	727	727	727	726	724	722	719	720	723	725	726	726	724	722			
15	708	710	714	717	718	716	712	706	702	704	709	714	717	715	712	706			
20	686	689	698	703	705	701	692	685	677	681	692	699	704	700	693	683			
25	658	663	675	685	688	682	670	657	649	654	668	680	687	682	670	658			
30	624	632	649	664	668	660	641	624	613	621	641	659	667	660	642	625			
35	585	595	618	637	645	633	610	586	572	583	609	632	644	634	610	587			
40	540	554	583	609	618	603	574	544	527	541	575	604	617	606	575	545			
45	492	508	545	577	588	571	535	498	476	495	535	572	588	573	537	499			
50	438	459	504	542	555	535	493	447	421	445	495	538	556	540	496	449			
55	380	407	461	505	520	498	449	395	364	393	452	502	522	503	452	397			
60	320	353	417	467	484	459	404	340	302	339	409	464	485	464	408	343			
65	256	298	371	427	446	420	359	284	238	285	364	424	449	425	363	287			
70	191	245	327	388	408	380	314	230	173	232	321	385	410	385	319	233			
75	127	193	285	349	370	342	272	179	109	182	278	346	371	346	277	181			
80	67.9	147	245	312	333	304	233	133	52.6	137	239	308	333	307	236	135			
85	20.8	108	209	276	296	268	198	95.8	13.2	99.0	202	271	296	270	199	95.8			
90	0.52	79.5	178	248	269	241	168	68.1	0.14	70.9	170	237	261	236	166	66.6			
95	0.39	58.9	147	208	228	202	138	50.3	0.47	51.2	141	205	228	204	137	46.7			
100	1.43	42.3	125	183	201	177	116	36.4	1.74	38.2	117	176	198	175	113	34.0			
105	3.47	32.6	103	156	174	151	95.9	28.4	3.91	29.8	96.3	151	170	149	92.8	26.3			
110	5.85	26.5	84.6	133	149	129	79.4	23.7	6.42	24.7	79.7	126	145	125	76.2	21.8			
115	8.31	22.9	70.2	112	127	109	66.0	21.1	8.90	21.6	65.9	107	122	105	62.9	19.3			
120	10.7	20.9	58.2	93.8	107	91.4	54.9	20.0	11.4	19.7	54.9	88.8	102	87.5	52.2	17.9			
125	13.3	20.2	48.6	78.2	89.1	76.4	46.5	19.8	13.9	18.9	46.1	74.0	84.9	72.7	43.8	17.6			
130	15.6	20.3	41.3	65.1	74.2	63.8	39.8	20.2	16.2	18.8	38.9	61.3	70.2	60.3	37.2	17.8			
135	17.9	20.5	35.6	53.8	61.3	52.9	34.7	20.7	18.3	18.9	33.2	50.7	57.9	50.0	32.2	18.3			
140	20.1	21.0	32.1	45.0	50.5	44.3	31.5	21.3	20.3	18.9	28.9	41.6	47.5	41.8	28.8	18.8			
145	22.1	21.8	29.5	38.4	42.1	38.0	29.4	22.3	22.1	18.9	25.7	34.3	38.9	35.4	26.9	19.6			
150	23.8	23.8	27.7	34.0	36.3	33.6	27.8	23.9	23.6	20.6	23.5	29.1	32.6	30.9	25.7	21.0			
155	23.9	24.8	26.5	30.4	32.1	30.4	26.4	24.7	23.4	21.6	22.0	25.7	28.1	27.7	24.7	22.4			
160	22.6	25.0	26.2	27.9	28.9	28.1	25.8	23.8	22.0	21.8	20.3	23.2	25.1	25.2	23.7	23.6			
165	21.0	25.0	27.4	27.0	27.1	27.1	23.9	21.8	20.2	20.2	18.9	22.6	23.9	24.0	24.2	24.3			
170	18.7	24.1	26.1	27.6	27.6	25.9	22.3	19.9	18.4	18.3	19.1	18.7	23.0	25.0	23.9	22.8			
175	21.1	22.1	24.9	25.3	23.3	20.9	21.2	21.4	21.0	20.9	20.7	19.7	17.8	20.8	22.0	21.6			
180	22.9	22.3	22.5	17.6	12.4	19.4	20.7	22.1	22.6	22.6	22.1	21.5	17.2	15.8	18.6	20.9			

C Range: 0 - 360DEG  
 C Interval: 22.5DEG  
 Test Speed: HIGH  
 Temperature:24.6DEG  
 Operators:Hill  
 Test Date:2022-05-21

γ Range: 0 - 180DEG  
 γ Interval: 1.0DEG  
 Test System:EVERFINE GO-R5000\_V2 SYSTEM V2.0.351  
 Humidity:40%  
 Test Distance:2.526m [K=1.0000]  
 Remarks: