



LED BACK-LIT FLAT PANEL

► **DESIGN** - LED BACK-LIT FLAT PANEL comes with a durable commercial grade housing resistant to rust and impact, anti-corrosion aluminum seamless rigid frame, anti-glare PC lens, and 0-10V dimmable driver with circuit overload, short circuit, and low-voltage protection, making it both safe and reliable. It is designed to operate on 120-277V circuits with a 0-10V dimmable driver.

► **COLOR AND POWER SELECTABLE** - You can choose either a 3,500K neutral white, 4,000K cool white or 5,000K daylight color temperature and change the power with a simple switch.

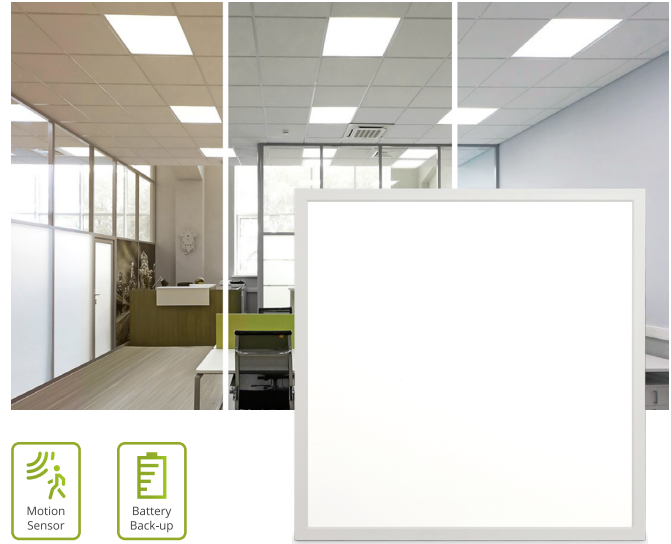
► **BATTERY BACK-UP** - The built-in battery back-up provide 90 minutes of power in case of emergency.

► **INSTALLATION** - This fixture has three different mounting options: recessed, suspended, and surface.

► **APPLICATION** - Perfect commercial or industrial solution for offices, hospitals, schools, retail, workshops, and many other applications. It is also Damp Locations rated.

► **ADVANTAGES** - With calculated lifespan up to 180,000 hours, these fixtures are made to last decades under normal operation! ASD provides a 5-year limited warranty along with UL and DLC Premium certifications to guarantee top quality products and safety!

<i>Catalog number</i>	
<i>Notes</i>	
<i>Type</i>	



Model	Type	Watts	Voltage	Dimmable	Lumens	CCT	Finish	Dimensions (LxWxH)	Option
BLP									
ASD-BLP-22A30-4P	2x2	20/25/30W	120-277 V	0-10 V	up to 3,761 lm	3CCT (3,500/4,000/5,000 K)	White	23-3/4" x 23-3/4" x 1-3/8"	-
ASD-BLP-22A40-6P	2x2	25/30/40W	120-277 V	0-10 V	up to 5,511 lm	3CCT (3,500/4,000/5,000 K)	White	23-3/4" x 23-3/4" x 1-7/16"	-
ASD-BLP-24A40-4P	2x4	25/30/40W	120-277 V	0-10 V	up to 5,200 lm	3CCT (3,500/4,000/5,000 K)	White	47-3/4" x 23-3/4" x 1-3/8"	-
ASD-BLP-24A50-4P	2x4	30/40/50W	120-277 V	0-10 V	up to 6,542 lm	3CCT (3,500/4,000/5,000 K)	White	47-3/4" x 23-3/4" x 1-3/8"	-
ASD-BLP-24A50-6P	2x4	30/40/50W	120-277 V	0-10 V	up to 6,735 lm	3CCT (3,500/4,000/5,000 K)	White	47-3/4" x 23-3/4" x 1-7/16"	-
BLP-MS WITH MOTION SENSOR									
ASD-BLP-22A30-MS	2x2	20/25/30W	120-277 V	0-10 V	up to 3,761 lm	3CCT (3,500/4,000/5,000 K)	White	23-3/4" x 23-3/4" x 1-3/8"	Motion sensor
ASD-BLP-24A40-MS	2x4	25/30/40W	120-277 V	0-10 V	up to 5,200 lm	3CCT (3,500/4,000/5,000 K)	White	47-3/4" x 23-3/4" x 1-3/8"	Motion sensor
BLP-EM WITH BATTERY BACK-UP									
ASD-BLP-22A30-EM	2x2	20/25/30W	120-277 V	0-10 V	up to 3,761 lm	3CCT (3,500/4,000/5,000 K)	White	23-3/4" x 23-3/4" x 1-3/8"	Battery back-up 8W
ASD-BLP-24A40-EM	2x4	25/30/40W	120-277 V	0-10 V	up to 5,200 lm	3CCT (3,500/4,000/5,000 K)	White	47-3/4" x 23-3/4" x 1-3/8"	Battery back-up 8W

For detailed luminous flux information please refer to Annex 1, page 6.

For most up-to-date spec sheets please refer to asd-lighting.com



LED BACK-LIT FLAT PANEL

PRODUCT SPECIFICATIONS:

Construction & Materials		
Housing	Steel, Aluminum	
Lens	PS	
Finish	White	
Weight	ASD-BLP-22A30-4P	17.6 lbs (8 kg)
	ASD-BLP-22A40-6P	28 lbs (12.7 kg)
	ASD-BLP-24A40-4P	32.6 lbs (14.8 kg)
	ASD-BLP-24A50-4P	
	ASD-BLP-24A50-6P	58.6 lbs (26.6 kg)
	ASD-BLP-22A30-MS	4.4 lbs (2 kg)
	ASD-BLP-24A40-MS	8.2 lbs (3.7 kg)
	ASD-BLP-22A30-EM	5.1 lbs (2.3 kg)
ASD-BLP-24A40-EM	8.8 lbs (4 kg)	
Environmental system		
Work environment	Suitable for Damp Locations	
Operating temperature	-4°F to 122°F (-20°C to 50°C) for 6P models: -4°F to 113°F (-20°C to 45°C)	
L-70 Life	R > 102,000 hrs; C > 180,000 hrs for 6P models: R > 102,000 hrs; C > 158,000 hrs	
Optical system		
Color temperature	3CCT switch (3,500/4,000/5,000 K), 5,000 K by default	
CRI	> 80	
Electrical system		
Input voltage	120-277 V	
Max input current	ASD-BLP-22A30-4P	0.35 A
	ASD-BLP-22A40-6P	0.37 A
	ASD-BLP-24A40-4P	0.42 A
	ASD-BLP-24A50-4P	
	ASD-BLP-24A50-6P	0.46 A
	ASD-BLP-22A30-MS	0.35 A
	ASD-BLP-24A40-MS	0.42 A
	ASD-BLP-22A30-EM	0.35 A
ASD-BLP-24A40-EM	0.42 A	
Inrush current (Action time)	75 A (1 S) for 6P models: 50 A (6 S)	
Off state power	0W	
Power consumption	ASD-BLP-22A30-4P	20/25/30W
	ASD-BLP-22A40-6P	25/30/40W
	ASD-BLP-24A40-4P	
	ASD-BLP-24A50-4P	30/40/50W
	ASD-BLP-24A50-6P	20/25/30W
	ASD-BLP-22A30-MS	
	ASD-BLP-24A40-MS	25/30/40W
	ASD-BLP-22A30-EM	20/25/30W
ASD-BLP-24A40-EM	25/30/40W	
Power factor	> 0.9	
Output voltage	30-42 V for 6P models: 42 V	
Max output current	ASD-BLP-22A30-4P	0.65/0.54/0.45 A
	ASD-BLP-22A40-6P	1 A
	ASD-BLP-24A40-4P	0.85/0.65/0.54 A
	ASD-BLP-24A50-4P	0.8/1.0/1.25 A
	ASD-BLP-24A50-6P	1.25 A
	ASD-BLP-22A30-MS	0.45/0.54/0.65 A
	ASD-BLP-24A40-MS	0.54/0.65/0.85 A
	ASD-BLP-22A30-EM	0.65/0.54/0.45 A
ASD-BLP-24A40-EM	0.85/0.65/0.54 A	
Surge protection DM/CM	2.5 kV / 2.5 kV for 6P models: 1 kV / 2 kV	
Dimming compatible controls		
Brand	Legrand Lutron	
Models	RH4FBL3PW NTSTV-DV DVSTV DS710 IP710 NFTV	

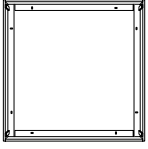
Regular and voluntary certifications
5-year limited warranty
DesignLights Consortium (DLC) listed (Classification: Premium) Main: Indoor luminaires; General application: Troffer; Primary use: Luminaires for ambient lighting of Interior commercial spaces
UL certified E473854

PACKAGE CONTENTS:


Description	Q-ty
LED Back-Lit Flat Panel	1 (4 for 4P, 6 for 6P)
Box	1

ACCESSORIES (sold separately):

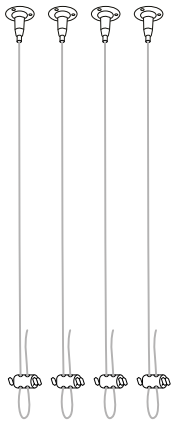
Surface mounting low frame for 2x2
ASD-FELP22-L



for 2x4
ASD-FELP24-L



Ceiling hanging set 39.37"
ASD-CHS4



ACCESSORY COMPATIBILITY LIST:

Accessories	Surface mounting low frame for 2x2 panels ASD-FELP22-L	Surface mounting low frame for 2x4 panels ASD-FELP24-L	Ceiling hanging set 39.37" ASD-CHS4
Models			
ASD-BLP-22A30-4P	•		•
ASD-BLP-22A40-6P	•		•
ASD-BLP-24A40-4P		•	•
ASD-BLP-24A50-4P		•	•
ASD-BLP-24A50-6P		•	•
ASD-BLP-22A30-MS	•		•
ASD-BLP-24A40-MS		•	•
ASD-BLP-22A30-EM	•		•
ASD-BLP-24A40-EM		•	•

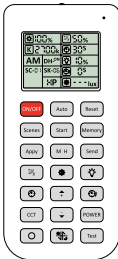
For most up-to-date spec sheets please refer to asd-lighting.com



LED BACK-LIT FLAT PANEL

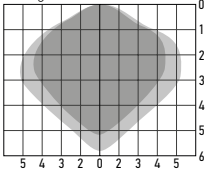
MOTION SENSOR INFORMATION

REMOTE CONTROL **ASD-06RC** sold separately:

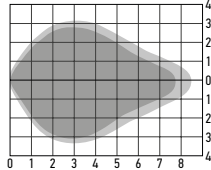


Button	Remarks	Button	Remarks	Button	Remarks
ON/OFF	ON/OFF Turn the sensor ON/OFF.	M H	Mounting height Adjust detection area/sensitivity levels according to real installation situations, higher or lower.	↑	Up The main functional buttons to adjust the factors to desired level. Press + - button to dim light directly in non-detection mode.
Auto	Auto Enter "sensor mode" and perform previous settings.	Send	Send Memorize and send out the previous setting of individual parameters.	↓	Down
Reset	Reset Enter "sensor mode" and perform the default settings.	%	Detection range Also known as "sensitivity", 100 % means the highest sensitivity and longest distance. Use this button and the + - buttons to adjust.	CCT	CCT Selectable Not applicable to this product.
Scenes	Scenes Shows current settings saved in remote.	☀	Daylight sensor The preset lux level at which motion will be detected. Use this button and the + - buttons to adjust.	POWER	Power Adjust brightness in both ON/OFF mode & sensor mode, minimum 10%, max 100%, each time this button is pressed it changes by 5%.
Start	Start Press this to begin scene setup.	☾	Stand-by dimming After hold time, the light will dim from 100 % to optional standby dimming levels. Use this button and the + - buttons to adjust.	○	Reserved Button Not applicable to this product.
Memory	Memory Saves the scene settings.	⏸	Hold time The period that light will stay illuminated 100 % after no motion is detected. Use this button and the + - buttons to adjust.	☀/☾	Daylight Harvesting Daylight harvesting function enabled or disabled.
Apply	Apply Applies current scene settings to the fixture.	⏸	Stand-by period The period after holdtime, during which the light keeps standby dimming level. Use this button and the + - buttons to adjust.	Test	Test button Press this button to test the sensor; it will temporarily change the hold time to 2s. This setting cannot be saved.

Ceiling mounted



Wall mounted



- Highest mounting height is 16.4 ft (5 m)
 - This figure indicates the maximum distance at the highest mounting height with 100 % sensitivity.
- Well detected area
■ Possibly detected area

User notes:

1. Microwaves can penetrate walls or glass thinner than 0.8" but will be impaired if thicker than 0.8".
2. The driver voltage shall be stable and float within 10 %.
3. Detection area will be affected by speed of motion, mounting height and movement volume.
4. Conduct testing with adequate ambient lighting for best results.
5. Dimming performance differs when connected to different drivers; If the driver can't completely turn OFF, sensor can't either.
6. The first time powered ON sensor, light will be ON 100% for about 10S then dims to standby level or OFF.

Installation precautions:

1. Suitable for ceiling mount installation, adjust sensitivity properly if it's installed on side-wall because it gets more sensitive.
2. Make sure the microwave module is completely exposed.
3. The detection surface of the sensor module should be installed facing the detection area.

Application environment:

1. Suitable for indoor application, partial/completely outdoor environment conditions might trigger the sensor.
2. Shall be mounted securely, to avoid any false triggers caused by movement of the fixture itself.
3. Keep the sensor module away from AC input and DC output to avoid high/low frequency signal interference.

Specifications

Operating voltage	10.5-15 V
Operating current	< 30 mA
Detection area	25 %/50 %/75 %/100 %
Hold time	5 s/30 s/1 min/3 min/5 min/10 min/20 min/30 min
Daylight threshold	2 lux (0.2 fc)/10 lux (0.9 fc)/30 lux (2.8 fc)/50 lux (4.7 fc)/80 lux (7.4 fc)/120 lux (11.2 fc)/disable
Standby period	0 s/10 s/30 s/1 min/5 min/10 min/30 min/+ ∞
Standby dimming level	10 %/20 %/30 %/50 %
Mounting height	max 16.4 ft (5 m)
Detection range	> 13.1 ft (4 m)
Operating frequency	5.8 GHz ± 75 GHz
Microwave power	< 0.3 mW

DEFAULT SETTING:

Specifications	
Detection area	100 %
Hold time	10 min
Daylight threshold	Disable
Stand-by period	0 s
Stand-by dimming level	10 %

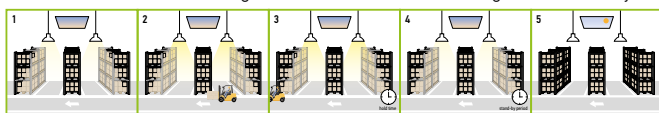
For most up-to-date spec sheets please refer to asd-lighting.com



LED BACK-LIT FLAT PANEL

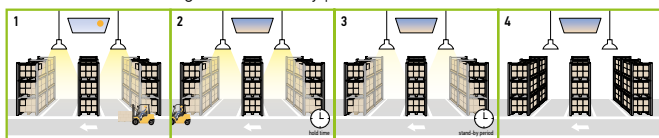
WITH DUSK/DAWN FUNCTION:

1. With insufficient ambient brightness, sensor turns on light and keeps it at standby dimming level even if there is no motion or presence.
2. When sensor detects motion or presence it will bring the light level up to 100%.
3. After motion is no longer detected, fixture remains at 100% for hold time.
4. After the preset hold time period, it will dim to the standby dimming level and maintain it indefinitely.
5. With sufficient ambient brightness, sensor will turn OFF light automatically.



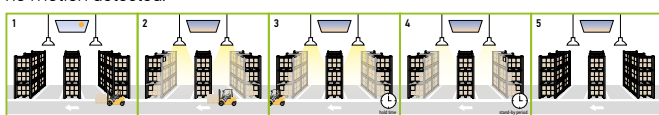
WITH DAYLIGHT DISABLED:

1. Sensor turns ON light when motion is detected.
2. Light will stay on after detecting motion for the desired hold time.
3. Sensor dims light to standby dimming level after hold time if there is still no motion.
4. Sensor turns OFF light after standby period.



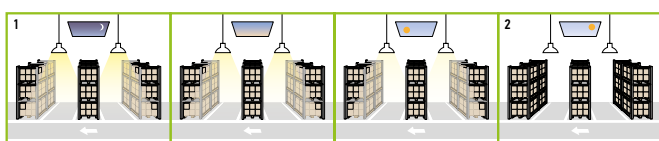
WITH DAYLIGHT THRESHOLD:

1. With sufficient daylight, the light remains OFF even after motion is detected.
2. With insufficient daylight, the sensor turns light ON when motion is detected.
3. After there's no motion detected, the sensor keeps light ON 100% for holdtime.
4. After holdtime, sensor dims light to standby dimming level for standby period. If the standby period has been set as 0s, sensor turns light OFF automatically after holdtime.
5. The sensor turns OFF light automatically after the standby period when there's no motion detected.



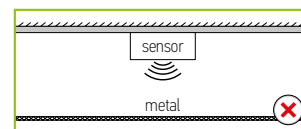
DAYLIGHT HARVESTING:

1. When the ambient brightness is lower than the preset lux level, the sensor will automatically turn on the light and adjust the dimming according to changes in ambient brightness. As it gets darker outside, the fixtures will brighten, and as it gets brighter outside, the fixtures will dim.
2. When the ambient brightness exceeds the preset lux level, the light will turn OFF.

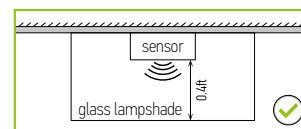


MICROWAVE MOTION SENSOR:

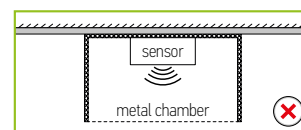
To avoid blocking the microwave emission, the microwave sensor can not be covered with metal materials, be sprayed with a coating of metal components, or have attached metal material or stickers etc.



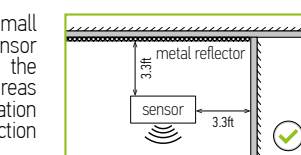
The distance between the antenna and the glass (dielectric material) should be no less than 0.4 ft when the sensor is within the glass lampshade. Otherwise, the microwave motion sensor will not penetrate the glass easily.



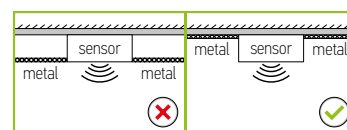
Avoid placing the sensor inside a metal chamber, this may cause a mis-trigger.



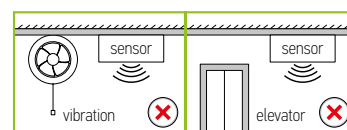
The sensor should not be placed in a small confined space. To avoid increasing the sensor detection range or abnormal operation, the sensor should be kept away from large areas of metal and glass reflectors (separation distance at least 3.3 ft). Reduce the detection area setting.



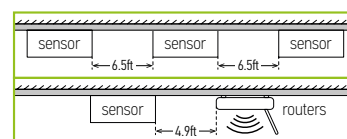
To avoid affecting the microwave signal transmission, the microwave antenna should be higher than the surrounding metal surface.



Any vibration or movement may trigger the sensor. Ensure the sensor is far from any constant movement.

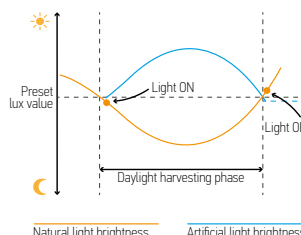


There must be at least 6.5ft between microwave sensors; There must be at least 4.9ft between the sensor and other wireless devices such as routers to avoid possible radio interference.



DAYLIGHT HARVESTING SETTING:

1. Adjust "daylight" value higher than 50lux.
2. Preset "standby period" 0S
3. Press the MW button three times until the MW icons is both blink on the LCD screen to enable the daylight harvesting function.



For most up-to-date spec sheets please refer to asd-lighting.com



LED BACK-LIT FLAT PANEL

BUILT-IN BATTERY BACK-UP INFORMATION

Model	Battery watts	Lumens in emergency mode	Battery capacity	Emergency mode	Charging time
ASD-BLP-22A30-EM	8W	1,265 lm	2,500 mAh	90 min	≥ 24 hours
ASD-BLP-24A40-EM	8W	1,286 lm	2,500 mAh	90 min	≥ 24 hours

INSTALLATION GUIDE

IMPORTANT SAFETY INFORMATION:

Please read all the instructions below before installation.

- ▶ Make sure that the supply voltage corresponds to the rated product voltage.
- ▶ The product must be installed by a qualified electrician in accordance with the National Electrical Code and corresponding local codes.
- ▶ If the product is damaged, do not use it.

⚠ WARNING

Risk of personal injury – read and follow all warnings and installation instructions. Keep or give to the owner for future reference.

Risk of cuts: Wear gloves to prevent cuts or abrasions when removing from carton, handling, installing, and maintaining this product.

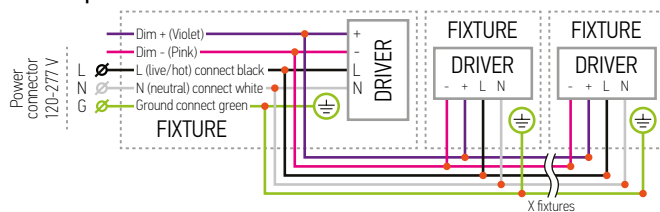
Risk of electric shock: This product must be installed in accordance with the applicable installation code by a person familiar with the construction and operation of the product and the hazards involved.

Risk of Fire: Minimum 194°F supply conductors. Consult a qualified electrician to ensure correct branch circuit conductor.

ASD® assumes no responsibility for claims arising out of improper or careless installation or handling of this product.

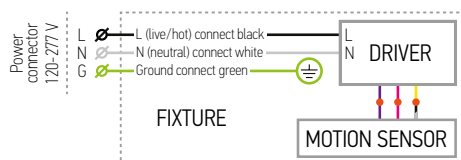
ELECTRICAL SCHEMATIC DIAGRAM:

BLP multiple fixture connection

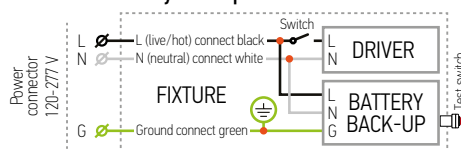


Linking limits: up to 20 panels can be linked together. Total power of LED Panels shall not exceed the wattage of dimmer.

BLP-MS with motion sensor

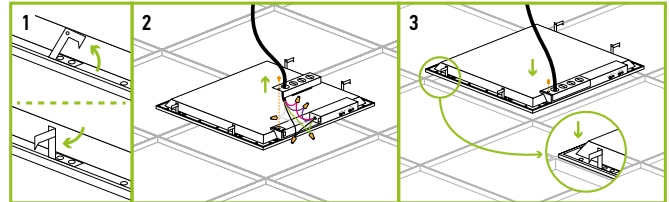


BLP-EM with battery back-up



RECESSED MOUNT INSTALLATION:

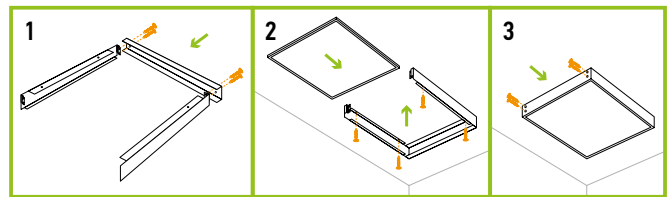
1. Lift all mounting clips along the edges of the panel. Turn the mounting clip head.
2. Remove the knockout hole on box with a screwdriver, remove screw and take out the driver cover. Connect the wires inside the driver box: Black to Black, White to White, Green to Green.
3. Cover the driver box and tighten it with a screwdriver, finish connection.



SURFACE MOUNT INSTALLATION

ASD-FELP22-L **ASD-FELP24-L** sold separately:

1. Connect 3 pieces of the frame to the ceiling using four screws.
2. Connect the panel wires as shown in electrical schematic diagram and insert panel into frame.
3. Attach the fourth piece and secure with screws. Power on to ensure installation is complete.

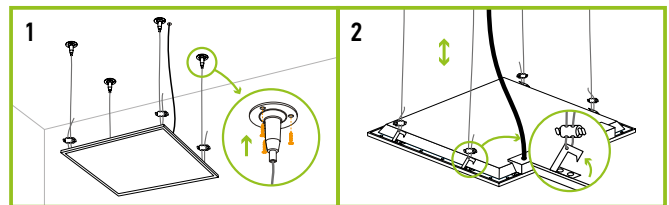


* Must remove earthquake hook before installing surface mount frame.

SUSPENDED MOUNT INSTALLATION

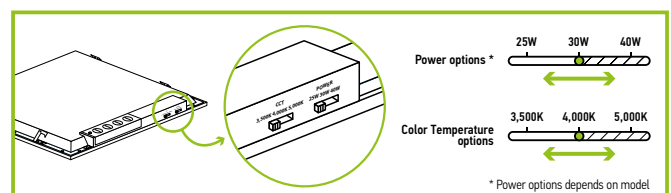
ASD-CHS4 sold separately:

1. Insert the wall plugs (not included) into the ceiling and secure the cable to the ceiling.
2. Lock the suspension cable to the clip. Adjust the cable length to meet the height requirements. Attach the cable to the ceiling.



* For 2x4 installation please use 2 pcs of Ceiling Hanging set.

POWER AND COLOR TEMPERATURE SETTINGS:



For most up-to-date spec sheets please refer to asd-lighting.com



LED BACK-LIT FLAT PANEL

ANNEX 1

Model	Watts	3,500 K	4,000 K	5,000 K
ASD-BLP-22A30-4P ASD-BLP-22A30-MS ASD-BLP-22A30-EM	20W	2,543 lm	2,681 lm	2,629 lm
	25W	3,068 lm	3,273 lm	3,177 lm
	30W	3,528 lm	3,761 lm	3,633 lm
ASD-BLP-24A40-4P ASD-BLP-24A40-MS ASD-BLP-24A40-EM	25W	3,288 lm	3,398 lm	3,331 lm
	30W	3,839 lm	3,983 lm	3,891 lm
	40W	4,988 lm	5,200 lm	5,025 lm
ASD-BLP-22A40-6P	25W	3,551 lm	3,672 lm	3,600 lm
	30W	4,034 lm	4,185 lm	4,099 lm
	40W	5,263 lm	5,511 lm	5,335 lm
ASD-BLP-24A50-4P	30W	4,139 lm	4,280 lm	4,205 lm
	40W	5,178 lm	5,347 lm	5,304 lm
	50W	6,250 lm	6,542 lm	6,341 lm
ASD-BLP-24A50-6P	30W	4,021 lm	4,155 lm	4,101 lm
	40W	5,211 lm	5,436 lm	5,315 lm
	50W	6,419 lm	6,735 lm	6,588 lm

ORDERING INFORMATION

Model	UPC	Pcs. (pack) per carton	Carton size	Carton weight	GTIN 14
BLP					
ASD-BLP-22A30-4P	810128114479	4 (1)	25.2" x 6.2" x 25.6"	20 lbs	-
ASD-BLP-22A40-6P	810128113847	6 (1)	25.8" x 11" x 25.8"	34.2 lbs	-
ASD-BLP-24A40-4P	810128114486	4 (1)	49.2" x 6.2" x 25.6"	36.7 lbs	-
ASD-BLP-24A50-4P	810128117043	4 (1)	49.2" x 6.2" x 25.6"	36.7 lbs	-
ASD-BLP-24A50-6P	810128113854	6 (1)	49.8" x 11" x 25.8"	67.2 lbs	-
BLP-MS WITH MOTION SENSOR					
ASD-BLP-22A30-MS	810128115803	4	24.9" x 7.3" x 24.6"	20 lbs	10810128115800
ASD-BLP-24A40-MS	810128115810	4	49" x 7.3" x 24.6"	36.7 lbs	10810128115817
BLP-EM WITH BATTERY BACK-UP					
ASD-BLP-22A30-EM	810128114509	4	24.9" x 7.3" x 24.6"	22.6 lbs	10810128114506
ASD-BLP-24A40-EM	810128114516	4	49" x 7.3" x 24.6"	39.4 lbs	10810128114513

ACCESSORIES:

Model	Description	UPC	Pcs. per carton	Carton size	Carton weight	GTIN 14
ASD-FELP22-L	Surface mounting low frame for 2x2 panels	819201021581	9	25.2" x 6.5" x 7.7"	28.8 lbs	10819201021588
ASD-FELP24-L	Surface mounting low frame for 2x4 panels	819201021598	9	48.8" x 5.9" x 7.7"	45.2 lbs	10819201021595
ASD-CHS4	Ceiling hanging set 39.37"	859961005148	50	10.4" x 10.4" x 7.7"	23.7 lbs	10859961005145

For most up-to-date spec sheets please refer to asd-lighting.com