



LED DOWNLIGHT RETROFIT KIT

► **DESIGN** - LED DOWNLIGHT RETROFIT KIT has a classic, low-profile design with a baffle trim that allows you to have a stylish look with efficient lighting. The preinstalled TP24 and E26 connectors and spring-loaded clips make your installation quick and easy. The acrylic lens with a 105° beam angle and CRI90+ grants you even light. It is designed to operate on 120V circuits.

► **COLOR SELECTABLE** - You can choose either a 2,700K soft white, 3,000K warm white, 3,500K neutral white, 4,000K cool white, or 5,000K daylight color temperature.

► **DIMMING** - Smooth triac dimming capabilities ranging from 10% to 100% with modern LED dimmers allow you to control the look and feel of your space.

► **INSTALLATION** - This fixture is suitable for most new construction, remodeling, and shallow recessed lighting housings. It is also Wet Locations rated, making it perfect for kitchen, bathroom or any other common areas.

► **ADVANTAGES** - With a lifespan of 50,000 hours, these fixtures are made to last decades under normal operation! ASD provides a 5-year limited warranty along with UL certification to guarantee top quality products and safety!

Catalog number	
Notes	
Type	



Finish: White Bronze Black

Model	Size	Watts	Voitage	Dimmable	Lumens	CCT	Finish	Dimensions	Type
LRKR ROUND									
ASD-LRKR-4D9AC-WH	4 inch	8.6W	120 V	TRIAC	674/684/688/702/696 lm	5CCT (2,700/3,000/3,500/4,000/5,000 K)	White	5-1/16" x 2"	Round
ASD-LRKR-4D9AC-WH-6PACK	4 inch	8.6W	120 V	TRIAC	674/684/688/702/696 lm	5CCT (2,700/3,000/3,500/4,000/5,000 K)	White	5-1/16" x 2"	Round
ASD-LRKR-4D9AC-WH-12PACK	4 inch	8.6W	120 V	TRIAC	674/684/688/702/696 lm	5CCT (2,700/3,000/3,500/4,000/5,000 K)	White	5-1/16" x 2"	Round
ASD-LRKR-4D9AC-BZ-6PACK	4 inch	8.6W	120 V	TRIAC	674/684/688/702/696 lm	5CCT (2,700/3,000/3,500/4,000/5,000 K)	Bronze	5-1/16" x 2"	Round
ASD-LRKR-4D9AC-BK-6PACK	4 inch	8.6W	120 V	TRIAC	674/684/688/702/696 lm	5CCT (2,700/3,000/3,500/4,000/5,000 K)	Black	5-1/16" x 2"	Round
ASD-LRKR-6D12AC-WH-6PACK	5 inch and 6 inch	12W	120 V	TRIAC	962/971/992/1,009/996 lm	5CCT (2,700/3,000/3,500/4,000/5,000 K)	White	7-5/16" x 3-7/16"	Round
ASD-LRKR-6D12AC-WH-12PACK	5 inch and 6 inch	12W	120 V	TRIAC	962/971/992/1,009/996 lm	5CCT (2,700/3,000/3,500/4,000/5,000 K)	White	7-5/16" x 3-7/16"	Round
ASD-LRKR-6D12AC-BR	5 inch and 6 inch	12W	120 V	TRIAC	962/971/992/1,009/996 lm	5CCT (2,700/3,000/3,500/4,000/5,000 K)	Bronze	7-5/16" x 3-7/16"	Round
ASD-LRKR-6D12AC-BZ-6PACK	5 inch and 6 inch	12W	120 V	TRIAC	962/971/992/1,009/996 lm	5CCT (2,700/3,000/3,500/4,000/5,000 K)	Bronze	7-5/16" x 3-7/16"	Round
ASD-LRKR-6D12AC-BK	5 inch and 6 inch	12W	120 V	TRIAC	962/971/992/1,009/996 lm	5CCT (2,700/3,000/3,500/4,000/5,000 K)	Black	7-5/16" x 3-7/16"	Round
ASD-LRKR-6D12AC-BK-6PACK	5 inch and 6 inch	12W	120 V	TRIAC	962/971/992/1,009/996 lm	5CCT (2,700/3,000/3,500/4,000/5,000 K)	Black	7-5/16" x 3-7/16"	Round
LRKS SQUARE									
ASD-LRKS-4D9AC-WH-6PACK	4 inch	8.6W	120 V	TRIAC	662/674/677/709/691 lm	5CCT (2,700/3,000/3,500/4,000/5,000 K)	White	5" x 5" x 2-1/16"	Square
ASD-LRKS-4D9AC-BZ-6PACK	4 inch	8.6W	120 V	TRIAC	662/674/677/709/691 lm	5CCT (2,700/3,000/3,500/4,000/5,000 K)	Bronze	5" x 5" x 2-1/16"	Square
ASD-LRKS-4D9AC-BK-6PACK	4 inch	8.6W	120 V	TRIAC	662/674/677/709/691 lm	5CCT (2,700/3,000/3,500/4,000/5,000 K)	Black	5" x 5" x 2-1/16"	Square
ASD-LRKS-6D12AC-WH-6PACK	6 inch	12W	120 V	TRIAC	965/977/986/988/1,023 lm	5CCT (2,700/3,000/3,500/4,000/5,000 K)	White	7-5/16" x 7-5/16" x 1-7/8"	Square
ASD-LRKS-6D12AC-BZ-6PACK	6 inch	12W	120 V	TRIAC	965/977/986/988/1,023 lm	5CCT (2,700/3,000/3,500/4,000/5,000 K)	Bronze	7-5/16" x 7-5/16" x 1-7/8"	Square
ASD-LRKS-6D12AC-BK-6PACK	6 inch	12W	120 V	TRIAC	965/977/986/988/1,023 lm	5CCT (2,700/3,000/3,500/4,000/5,000 K)	Black	7-5/16" x 7-5/16" x 1-7/8"	Square

For most up-to-date spec sheets please refer to asd-lighting.com





LED DOWNLIGHT RETROFIT KIT

PRODUCT SPECIFICATIONS:

Construction & Materials					
Housing	Plastic				
Lens	PC				
Finish	White, Bronze, Black				
Weight	ASD-LRKR-4D9AC-WH	0.2 lbs (0.1 kg)	ASD-LRKR-6D12AC-BK	0.4 lbs (0.2 kg)	
	ASD-LRKR-4D9AC-WH-6PACK	1.5 lbs (0.7 kg)	ASD-LRKR-6D12AC-BK-6PACK	2.2 lbs (1 kg)	
	ASD-LRKR-4D9AC-WH-12PACK	2.9 lbs (1.3 kg)	ASD-LRKS-4D9AC-WH-6PACK	1.5 lbs (0.7 kg)	
	ASD-LRKR-4D9AC-BZ-6PACK	1.5 lbs (0.7 kg)	ASD-LRKS-4D9AC-BZ-6PACK		
	ASD-LRKR-4D9AC-BK-6PACK		ASD-LRKS-4D9AC-BK-6PACK		
	ASD-LRKR-6D12AC-WH-6PACK	2.2 lbs (1 kg)	ASD-LRKS-6D12AC-WH-6PACK	2.4 lbs (1.1 kg)	
	ASD-LRKR-6D12AC-WH-12PACK	4.5 lbs (2 kg)	ASD-LRKS-6D12AC-BZ-6PACK		
	ASD-LRKR-6D12AC-BR	0.4 lbs (0.2 kg)	ASD-LRKS-6D12AC-BK-6PACK		
ASD-LRKR-6D12AC-BZ-6PACK	2.2 lbs (1 kg)				
Environmental system					
Work environment	Suitable for Wet Locations				
Operating temperature	-4°F to 104°F (-20°C to 40°C)				
L-70 Life	> 50,000 hrs				
Optical system					
Luminous flux	ASD-LRKR-4D9AC-WH	674/684/688/702/696 lm	ASD-LRKR-6D12AC-BK	962/971/992/1,009/996 lm	
	ASD-LRKR-4D9AC-WH-6PACK		ASD-LRKR-6D12AC-BK-6PACK		
	ASD-LRKR-4D9AC-WH-12PACK		962/971/992/1,009/996 lm	ASD-LRKS-4D9AC-WH-6PACK	662/674/677/709/691 lm
	ASD-LRKR-4D9AC-BZ-6PACK			ASD-LRKS-4D9AC-BZ-6PACK	
	ASD-LRKR-4D9AC-BK-6PACK	ASD-LRKS-4D9AC-BK-6PACK			
	ASD-LRKR-6D12AC-WH-6PACK	ASD-LRKS-6D12AC-WH-6PACK	965/977/986/988/1,023 lm		
	ASD-LRKR-6D12AC-WH-12PACK	ASD-LRKS-6D12AC-BZ-6PACK			
	ASD-LRKR-6D12AC-BR	ASD-LRKS-6D12AC-BK-6PACK			
ASD-LRKR-6D12AC-BZ-6PACK					
Color temperature	5CCT switch (2,700/3,000/3,500/4,000/5,000 K), 3,000 K by default				
CRI	> 90				
Electrical system					
Input voltage	120 V				
Max input current	for 4 inch models: 0.086 A		for 6 inch models: 0.12 A		
Inrush current (Action time)	40 A (0.2 S)				
Off state power	0W				
Power consumption	for 4 inch models: 8.6W		for 6 inch models: 12W		
Power factor	> 0.8				
Output voltage	135 V				
Max output current	for 4 inch models: 0.055 A		for 6 inch models: 0.075 A		
Surge protection DM/CM	2.5 kV / 2.5 kV				
Dimming range			Regular and voluntary certifications		
10-100%			5-year limited warranty		
Dimming compatible controls			UL certified E475148		
Brand	Lutron		Leviton		
Models	DVW-603PGH-WH	MALV-600	DB33K1	6683	
	MIR-600THW-WH	DV-600P	1E1205	6674	
	MACL-153M-WH	NT-1000	1F4205	6672	
	CT-603PGH-WH	S-603P	VP106	6631	
	DVCL-153P-WH	S-600P			
	DVLV-603P-IV	4X603			
	S-600PR-WH				
PACKAGE CONTENTS:					
Description	Q-ty				
LED Downlight Retrofit Kit	6 (12 for 12 pack)				
Adapter (A)	6 (12 for 12 pack)				
Box	1				
					

For most up-to-date spec sheets please refer to asd-lighting.com



LED DOWNLIGHT RETROFIT KIT

INSTALLATION GUIDE

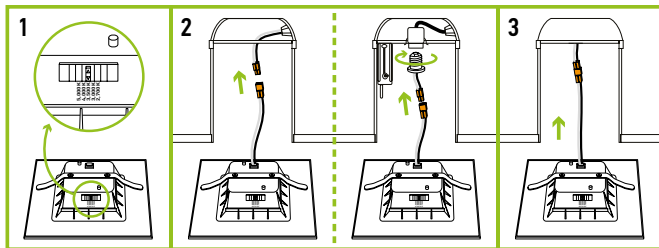
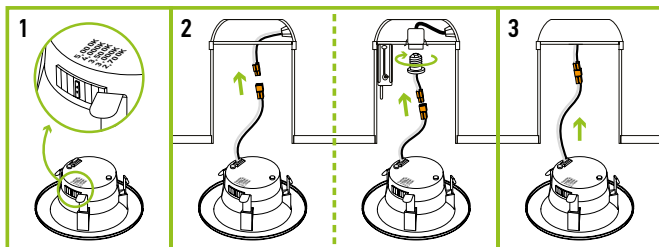
IMPORTANT SAFETY INFORMATION:

Please read all the instructions below before installation.

- ▶ Make sure that the supply voltage corresponds to the rated product voltage.
- ▶ The product must be installed by a qualified electrician in accordance with the National Electrical Code and corresponding local codes.
- ▶ If the product is damaged, do not use it.

INSTALLATION STEPS 4" AND 6":

1. Choose needed color temperature by adjusting the switch.
2. Turn off the main power and remove the existing trim and bulb from the can. Use one of the options to connect the terminals.
3. Carefully route wires into the can and gently push the fixture up into the can until sealed.



⚠ WARNING

RISK OF PERSONAL INJURY – READ and follow all WARNINGS and installation instructions. Keep or give to the owner for future reference.

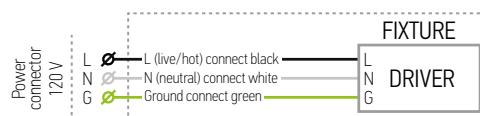
Risk of cuts: Wear gloves to prevent cuts or abrasions when removing from carton, handling, installing, and maintaining this product.

Risk of electric shock: This product must be installed in accordance with the applicable installation code by a person familiar with the construction and operation of the product and the hazards involved.

Risk of Fire: Minimum 194°F supply conductors. Consult a qualified electrician to ensure correct branch circuit conductor.

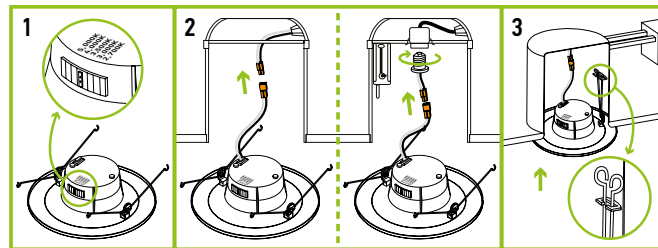
ASD® assumes no responsibility for claims arising out of improper or careless installation or handling of this product.

ELECTRICAL SCHEMATIC DIAGRAM:



INSTALLATION STEPS 5" AND 6" ROUND:

1. Choose needed color temperature by adjusting the switch.
2. Turn off the main power and remove the existing trim and bulb from the Can. Use one of the options to connect the terminals.
3. Squeeze the two sets of spring clip arms up toward each other. Route wires into the Can and hook both springs into the arm hook on the inside of Can. Release springs and gently push the fixture up into the Can until sealed.



ORDERING INFORMATION

Model	UPC	Pcs. per carton	Carton size	Carton weight	GTIN 14
LRKR ROUND					
ASD-LRKR-4D9AC-WH	810050739290	6	11" x 7.9" x 5.8"	2.7 lbs	10810050739297
ASD-LRKR-4D9AC-WH-6PACK	810050738682	2	13" x 10" x 7.1"	5.1 lbs	10810050738689
ASD-LRKR-4D9AC-WH-12PACK	810050738941	1	12.4" x 9.5" x 5.7"	3.8 lbs	-
ASD-LRKR-4D9AC-BZ-6PACK	810050739474	2	13" x 10" x 7.1"	5.1 lbs	10810050739471
ASD-LRKR-4D9AC-BK-6PACK	810050739467	2	13" x 10" x 7.1"	5.1 lbs	10810050739464
ASD-LRKR-6D12AC-WH-6PACK	810050738699	2	16.9" x 13.8" x 7.5"	6.6 lbs	10810050738696
ASD-LRKR-6D12AC-WH-12PACK	810050738958	1	13.4" x 12.4" x 7.3"	6 lbs	-
ASD-LRKR-6D12AC-BR	810128115094	6	15.6" x 7.9" x 8.1"	3.8 lbs	10810128115091
ASD-LRKR-6D12AC-BZ-6PACK	810050739542	2	16.9" x 13.8" x 7.5"	6.6 lbs	10810050739549
ASD-LRKR-6D12AC-BK	810050739573	6	15.6" x 7.9" x 8.1"	3.8 lbs	10810050739570
ASD-LRKR-6D12AC-BK-6PACK	810050739535	2	16.9" x 13.8" x 7.5"	6.6 lbs	10810050739532
LRKS SQUARE					
ASD-LRKS-4D9AC-WH-6PACK	810050739603	2	15.4" x 11.2" x 6.5"	4.9 lbs	10810050739600
ASD-LRKS-4D9AC-BZ-6PACK	810050739634	2	15.4" x 11.2" x 6.5"	4.9 lbs	10810050739631
ASD-LRKS-4D9AC-BK-6PACK	810050739627	2	15.4" x 11.2" x 6.5"	4.9 lbs	10810050739624
ASD-LRKS-6D12AC-WH-6PACK	810050739658	2	16.3" x 15.8" x 5.5"	7.5 lbs	10810050739655
ASD-LRKS-6D12AC-BZ-6PACK	810050739696	2	16.3" x 15.8" x 5.5"	7.5 lbs	10810050739693
ASD-LRKS-6D12AC-BK-6PACK	810050739672	2	16.3" x 15.8" x 5.5"	7.5 lbs	10810050739679

For most up-to-date spec sheets please refer to asd-lighting.com

