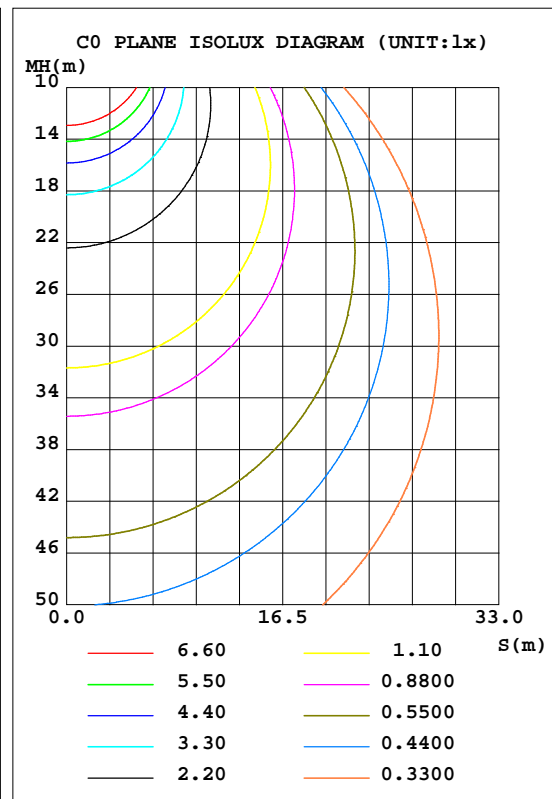
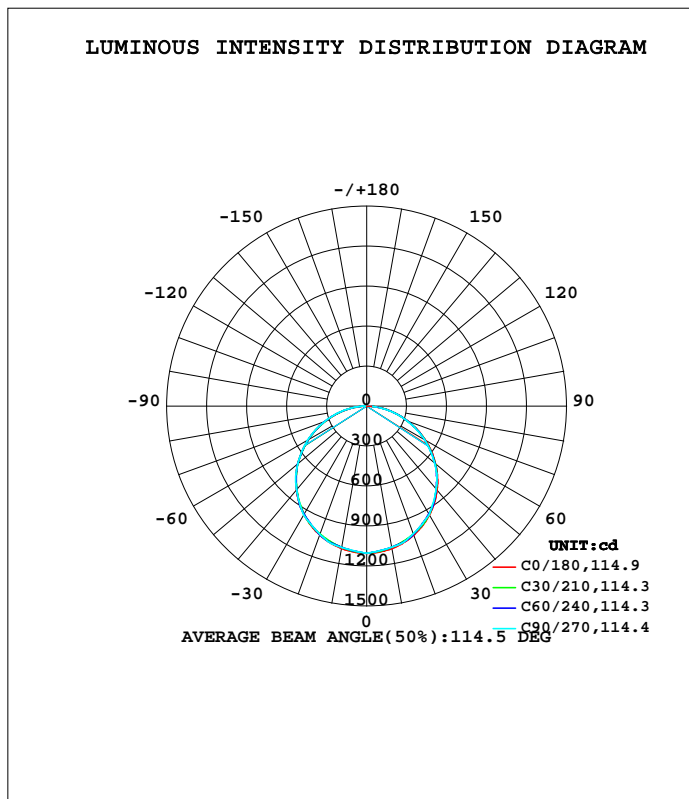


LUMINAIRE PHOTOMETRIC TEST REPORT

Test:U:120.2V I:0.2253A P:26.71W PF:0.9861 Lamp Flux:3375.07x1 lm		
NAME: ASD Lighting corp	TYPE:LED PANEL	WEIGHT:
SPEC.: ASD-ELP05-22D27CC-PRM(3500K)	DIM.: 603x603mm	SERIAL No.:BLD20180912N05
MFR.: ASD Lighting corp	SUR.:0.558*0.558	Shielding Angle:

DATA OF LAMP		PHOTOMETRIC DATA Eff: 126.36 lm/W			
MODEL		I _{max} (cd)	1104	S/MH(C0/180)	1.27
NOMINAL POWER(W)	27	LOR(%)	100.0	S/MH(C90/270)	1.27
RATED VOLTAGE(V)		TOTAL FLUX(lm)	3375.1	η UP, DN(C0-180)	0.0,49.7
NOMINAL FLUX(lm)	3375.07	CIE CLASS	DIRECT	η UP, DN(C180-360)	0.0,50.3
LAMPS INSIDE	1	η up(%)	0.0	CIBSE SHR NOM	1.25
TEST VOLTAGE(V)		η down(%)	100.0	CIBSE SHR MAX	1.35



C Range: 0 - 360DEG
 C Interval: 5.0DEG
 Test Speed: HIGH
 Temperature:22DEG
 Operators:HUA
 Test Date:2018-09-12

γ Range: 0 - 180DEG
 γ Interval: 0.5DEG
 Test System:EVERFINE GO-2000B_V1 SYSTEM V2.0.350
 Humidity:43%
 Test Distance:12.218m [K=1.0000]
 Remarks:

ZONAL FLUX DIAGRAM

ZONAL FLUX DIAGRAM:

γ	C0	C45	C90	C135	C180	C225	C270	C315	γ	Φ zone	Φ total	%lum,lamp
5	1100	1092	1090	1092	1099	1092	1091	1093	0- 5	26.23	26.23	0.81,0.81
10	1086	1075	1076	1074	1085	1076	1078	1077	5- 10	77.61	103.8	3.2,3.2
15	1063	1054	1059	1053	1062	1055	1062	1056	10- 15	126.6	230.4	7.1,7.1
20	1032	1028	1021	1026	1030	1029	1025	1031	15- 20	171.6	402.0	12.4,12.4
25	991.5	983.8	980.1	981.7	989.7	985.4	985.0	987.1	20- 25	210.6	612.6	18.9,18.9
30	943.2	932.4	939.5	930.2	941.0	934.5	945.3	936.2	25- 30	243.0	855.6	26.4,26.4
35	886.5	878.4	875.4	876.3	884.5	881.1	882.4	882.6	30- 35	267.7	1123	34.6,34.6
40	823.0	819.5	811.3	817.3	821.0	822.8	819.6	824.3	35- 40	283.1	1406	43.3,43.3
45	752.8	744.0	745.4	741.5	750.8	747.6	754.9	749.5	40- 45	289.5	1696	52.3,52.3
50	676.2	668.0	665.0	665.0	674.5	672.0	675.4	674.3	45- 50	286.8	1983	61.1,61.1
55	594.7	590.4	582.9	587.2	593.3	594.8	594.1	597.5	50- 55	274.1	2257	69.5,69.5
60	508.5	501.5	500.7	498.6	506.5	506.6	512.7	509.2	55- 60	252.9	2510	77.3,77.3
65	418.7	413.1	410.4	410.7	417.3	419.3	423.3	421.5	60- 65	223.9	2734	84.2,84.2
70	327.5	324.0	320.3	322.0	326.4	331.1	334.1	333.2	65- 70	188.1	2922	90,90
75	237.0	233.9	231.1	231.6	236.1	241.5	245.5	243.8	70- 75	147.3	3069	94.6,94.6
80	149.3	145.4	143.4	143.6	148.9	154.2	158.7	155.4	75- 80	103.2	3172	97.8,97.8
85	51.03	62.31	58.00	60.62	48.52	70.46	74.46	70.94	80- 85	57.61	3230	99.5,99.5
90	0.7653	2.939	4.123	2.030	1.359	6.215	12.40	6.233	85- 90	14.85	3245	100,100
95	0	0	0	0	0	0	0	0	90- 95	0.5508	3245	100,100
100	0	0	0	0	0	0	0	0	95-100	0	3245	100,100
105	0	0	0	0	0	0	0	0	100-105	0	3245	100,100
110	0	0	0	0	0	0	0	0	105-110	0	3245	100,100
115	0	0	0	0	0	0	0	0	110-115	0	3245	100,100
120	0	0	0	0	0	0	0	0	115-120	0	3245	100,100
125	0	0	0	0	0	0	0	0	120-125	0	3245	100,100
130	0	0	0	0	0	0	0	0	125-130	0	3245	100,100
135	0	0	0	0	0	0	0	0	130-135	0	3245	100,100
140	0	0	0	0	0	0	0	0	135-140	0	3245	100,100
145	0	0	0	0	0	0	0	0	140-145	0	3245	100,100
150	0	0	0	0	0	0	0	0	145-150	0	3245	100,100
155	0	0	0	0	0	0	0	0	150-155	0	3245	100,100
160	0	0	0	0	0	0	0	0	155-160	0	3245	100,100
165	0	0	0	0	0	0	0	0	160-165	0	3245	100,100
170	0	0	0	0	0	0	0	0	165-170	0	3245	100,100
175	0	0	0	0	0	0	0	0	170-175	0	3245	100,100
180	0	0	0	0	0	0	0	0	175-180	0	3245	100,100
DEG	LUMINOUS INTENSITY:cd									UNIT:lm		

Conical surface Flux(90deg): 1695.9 lm

%lum = 52.3%
%lamp = 52.3%

Conical surface Flux(120deg): 2509.7 lm

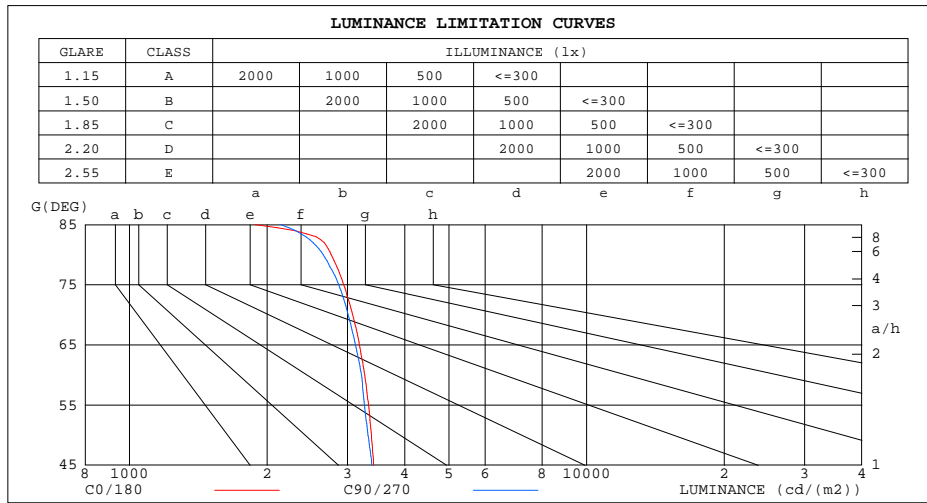
%lum = 77.3%
%lamp = 77.3%

C Range: 0 - 360DEG
C Interval: 5.0DEG
Test Speed: HIGH
Temperature:22DEG
Operators:HUA
Test Date:2018-09-12

γ Range: 0 - 180DEG
γ Interval: 0.5DEG
Test System:EVERFINE GO-2000B_V1 SYSTEM V2.0.350
Humidity:43%
Test Distance:12.218m [K=1.0000]
Remarks:

LUMINANCE LIMITATION CURVES

Test:U:120.2V I:0.2253A P:26.71W PF:0.9861 Lamp Flux:3375.07x1 lm		
NAME: ASD Lighting corp	TYPE:LED PANEL	WEIGHT:
SPEC.: ASD-ELP05-22D27CC-PRM(3500K)	DIM.: 603x603mm	SERIAL No.:BLD20180912N05
MFR.: ASD Lighting corp	SUR.:0.558*0.558	Shielding Angle:



LUMINANCE cd/(m2)		
G(DEG)	C0/180	C90/270
85	1883	2140
80	2764	2655
75	2944	2871
70	3079	3011
65	3185	3122
60	3270	3220
55	3334	3268
50	3383	3327
45	3423	3390

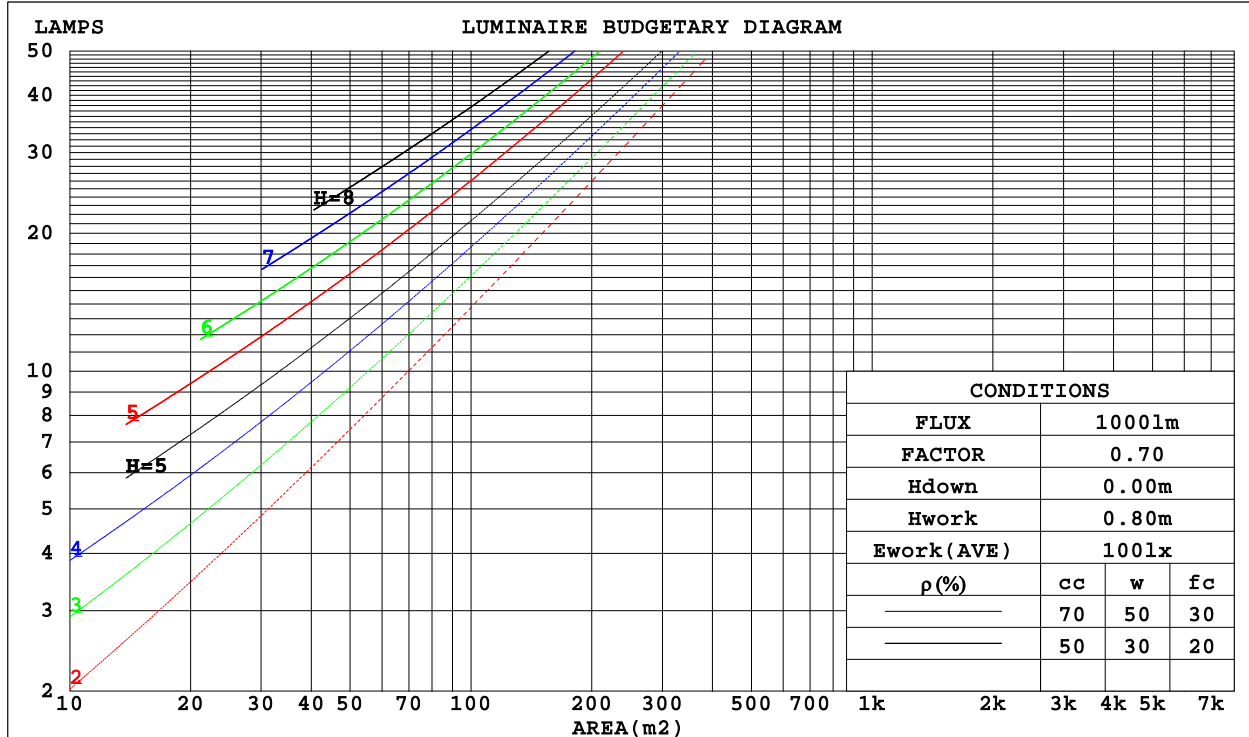
C Range: 0 - 360DEG
 C Interval: 5.0DEG
 Test Speed: HIGH
 Temperature:22DEG
 Operators:HUA
 Test Date:2018-09-12

γ Range: 0 - 180DEG
 γ Interval: 0.5DEG
 Test System:EVERFINE GO-2000B_V1 SYSTEM V2.0.350
 Humidity:43%
 Test Distance:12.218m [K=1.0000]
 Remarks:

CU AND LUMINAIRE BUDGETARY ESTIMATE DIAGRAM

Test:U:120.2V I:0.2253A P:26.71W PF:0.9861 Lamp Flux:3375.07x1 lm		
NAME: ASD Lighting corp	TYPE:LED PANEL	WEIGHT:
SPEC.: ASD-ELP05-22D27CC-PRM(3500K)	DIM.: 603x603mm	SERIAL No.:BLD20180912N05
MFR.: ASD Lighting corp	SUR.:0.558*0.558	Shielding Angle:

ρ_{cc}	80%			70%			50%			30%			10%			0
ρ_w	50%	30%	10%	50%	30%	10%	50%	30%	10%	50%	30%	10%	50%	30%	10%	0
ρ_{fc}	20%			20%			20%			20%			20%			0
RCR	RCR:Room Cavity Ratio						Coefficients of Utilization(CU)									
0.0	1.19	1.19	1.19	1.16	1.16	1.16	1.11	1.11	1.11	1.06	1.06	1.06	1.02	1.02	1.02	.00
1.0	1.03	.99	.95	1.01	.97	.93	.97	.94	.90	.93	.90	.88	.89	.87	.85	.83
2.0	.90	.83	.77	.88	.81	.76	.84	.79	.74	.81	.76	.72	.78	.74	.71	.69
3.0	.79	.70	.64	.77	.69	.63	.74	.67	.62	.71	.66	.61	.69	.64	.60	.57
4.0	.70	.61	.54	.68	.60	.53	.66	.58	.53	.63	.57	.52	.61	.56	.51	.49
5.0	.62	.53	.46	.61	.52	.46	.59	.51	.45	.57	.50	.45	.55	.49	.44	.42
6.0	.56	.47	.40	.55	.46	.40	.53	.45	.40	.51	.44	.39	.50	.44	.39	.37
7.0	.50	.42	.35	.50	.41	.35	.48	.40	.35	.47	.40	.35	.45	.39	.34	.32
8.0	.46	.37	.31	.45	.37	.31	.44	.37	.31	.43	.36	.31	.42	.35	.31	.29
9.0	.42	.34	.28	.42	.34	.28	.40	.33	.28	.39	.33	.28	.38	.32	.28	.26
10.0	.39	.31	.26	.38	.31	.26	.37	.30	.25	.36	.30	.25	.36	.30	.25	.23



C Range: 0 - 360DEG
 C Interval: 5.0DEG
 Test Speed: HIGH
 Temperature:22DEG
 Operators:HUA
 Test Date:2018-09-12

γ Range: 0 - 180DEG
 γ Interval: 0.5DEG
 Test System:EVERFINE GO-2000B_V1 SYSTEM V2.0.350
 Humidity:43%
 Test Distance:12.218m [K=1.0000]
 Remarks:

WEC AND CCEC

Test:U:120.2V I:0.2253A P:26.71W PF:0.9861 Lamp Flux:3375.07x1 lm		
NAME: ASD Lighting corp	TYPE:LED PANEL	WEIGHT:
SPEC.: ASD-ELP05-22D27CC-PRM(3500K)	DIM.: 603x603mm	SERIAL No.:BLD20180912N05
MFR.: ASD Lighting corp	SUR.:0.558*0.558	Shielding Angle:

ρcc	80%			70%			50%			30%			10%			0
ρw	50%	30%	10%	50%	30%	10%	50%	30%	10%	50%	30%	10%	50%	30%	10%	0
ρfc	20%			20%			20%			20%			20%			0
RCR	RCR:Room Cavity Ratio						Wall Exitance Coefficients(WEC)									
0.0																
1.0	.318	.181	.057	.311	.178	.056	.298	.171	.055	.286	.165	.053	.274	.159	.051	
2.0	.298	.163	.050	.292	.161	.049	.280	.156	.048	.269	.151	.047	.259	.146	.046	
3.0	.275	.146	.044	.269	.144	.043	.259	.140	.043	.249	.136	.042	.240	.133	.041	
4.0	.253	.131	.039	.248	.130	.038	.239	.127	.038	.230	.124	.037	.222	.121	.037	
5.0	.233	.119	.034	.229	.118	.034	.221	.115	.034	.213	.112	.033	.206	.110	.033	
6.0	.216	.108	.031	.212	.107	.031	.205	.105	.031	.198	.103	.030	.192	.101	.030	
7.0	.201	.099	.028	.197	.098	.028	.191	.096	.028	.185	.095	.028	.179	.093	.027	
8.0	.187	.092	.026	.184	.091	.026	.178	.089	.025	.173	.088	.025	.168	.086	.025	
9.0	.175	.085	.024	.173	.084	.024	.167	.083	.023	.162	.081	.023	.158	.080	.023	
10.0	.165	.079	.022	.162	.078	.022	.158	.077	.022	.153	.076	.022	.149	.075	.021	

ρcc	80%			70%			50%			30%			10%			0
ρw	50%	30%	10%	50%	30%	10%	50%	30%	10%	50%	30%	10%	50%	30%	10%	0
ρfc	20%			20%			20%			20%			20%			0
RCR	RCR:Room Cavity Ratio						Ceiling Cavity Exitance Coefficients(CCEC)									
0.0	.191	.191	.191	.163	.163	.163	.111	.111	.111	.064	.064	.064	.020	.020	.020	
1.0	.181	.156	.134	.155	.134	.115	.106	.092	.080	.061	.053	.046	.020	.017	.015	
2.0	.173	.132	.097	.148	.114	.084	.102	.079	.059	.059	.046	.034	.019	.015	.011	
3.0	.166	.114	.074	.142	.099	.064	.097	.069	.045	.056	.040	.026	.018	.013	.009	
4.0	.158	.101	.058	.135	.087	.050	.093	.061	.035	.054	.036	.021	.017	.012	.007	
5.0	.150	.091	.047	.129	.079	.041	.089	.055	.029	.052	.032	.017	.017	.011	.006	
6.0	.143	.082	.039	.123	.071	.034	.085	.050	.024	.049	.029	.014	.016	.010	.005	
7.0	.136	.076	.033	.117	.066	.029	.081	.046	.020	.047	.027	.012	.015	.009	.004	
8.0	.130	.070	.029	.112	.061	.025	.077	.043	.018	.045	.025	.011	.015	.008	.003	
9.0	.124	.065	.025	.106	.056	.022	.074	.040	.016	.043	.023	.009	.014	.008	.003	
10.0	.118	.061	.022	.102	.053	.020	.070	.037	.014	.041	.022	.008	.013	.007	.003	

C Range: 0 - 360DEG
 C Interval: 5.0DEG
 Test Speed: HIGH
 Temperature:22DEG
 Operators:HUA
 Test Date:2018-09-12

γ Range: 0 - 180DEG
 γ Interval: 0.5DEG
 Test System:EVERFINE GO-2000B_V1 SYSTEM V2.0.350
 Humidity:43%
 Test Distance:12.218m [K=1.0000]
 Remarks:

UGR(Unified Glare Rating) Table

Test:U:120.2V I:0.2253A P:26.71W PF:0.9861 Lamp Flux:3375.07x1 lm										
NAME: ASD Lighting corp					TYPE:LED PANEL			WEIGHT:		
SPEC.: ASD-ELP05-22D27CC-PRM(3500K)					DIM.: 603x603mm			SERIAL No.:BLD20180912N05		
MFR.: ASD Lighting corp					SUR.:0.558*0.558			Shielding Angle:		
ceiling/cavity	0.7	0.7	0.5	0.5	0.3	0.7	0.7	0.5	0.5	0.3
walls	0.5	0.3	0.5	0.3	0.3	0.5	0.3	0.5	0.3	0.3
working plane	0.2	0.2	0.2	0.2	0.2	0.2	0.2	0.2	0.2	0.2
Room dimensions	Viewed crosswise					Viewed endwise				
x = 2H y = 2H	17.0	18.6	17.3	18.8	19.0	17.0	18.5	17.3	18.7	19.0
3H	18.7	20.1	19.0	20.3	20.6	18.6	20.0	18.9	20.3	20.5
4H	19.3	20.7	19.7	21.0	21.2	19.3	20.6	19.6	20.9	21.1
6H	19.8	21.1	20.2	21.4	21.7	19.8	21.0	20.1	21.3	21.6
8H	20.0	21.2	20.3	21.5	21.8	19.9	21.2	20.3	21.4	21.7
12H	20.0	21.2	20.4	21.5	21.8	20.0	21.2	20.4	21.5	21.8
4H 2H	17.7	19.0	18.0	19.3	19.5	17.6	19.0	18.0	19.3	19.5
3H	19.5	20.7	19.8	21.0	21.3	19.4	20.6	19.8	20.9	21.2
4H	20.3	21.4	20.7	21.7	22.0	20.2	21.3	20.6	21.6	22.0
6H	20.9	21.9	21.3	22.2	22.6	20.9	21.8	21.3	22.2	22.5
8H	21.1	22.0	21.5	22.4	22.8	21.1	22.0	21.5	22.3	22.7
12H	21.2	22.0	21.6	22.4	22.8	21.2	22.0	21.6	22.4	22.8
8H 4H	20.6	21.5	21.0	21.9	22.3	20.5	21.4	20.9	21.8	22.2
6H	21.4	22.1	21.8	22.5	23.0	21.3	22.1	21.8	22.5	22.9
8H	21.7	22.3	22.1	22.8	23.2	21.6	22.3	22.1	22.7	23.2
12H	21.8	22.4	22.3	22.9	23.3	21.8	22.4	22.3	22.9	23.3
12H 4H	20.6	21.4	21.0	21.8	22.2	20.6	21.4	21.0	21.8	22.2
6H	21.5	22.1	21.9	22.5	23.0	21.4	22.1	21.9	22.5	22.9
8H	21.8	22.4	22.3	22.8	23.3	21.7	22.3	22.2	22.8	23.2
Variations with the observer position at spacings:										
S = 1.0H	+ 0.1 / - 0.2					+ 0.1 / - 0.2				
1.5H	+ 0.2 / - 0.3					+ 0.2 / - 0.3				
2.0H	+ 0.2 / - 0.2					+ 0.1 / - 0.3				

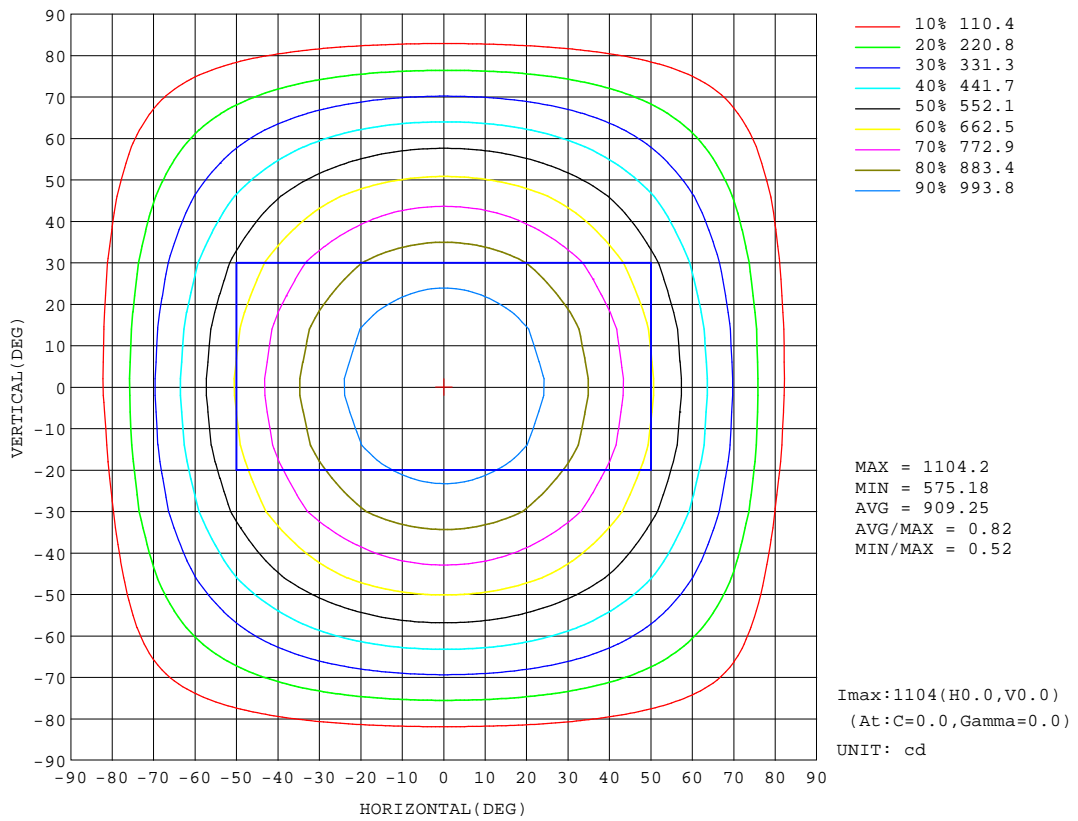
CIE Pub.117 Corrected 3245 lm Total Lamp Luminous Flux.(8log(F/F0) = 4.1)

C Range: 0 - 360DEG
 C Interval: 5.0DEG
 Test Speed: HIGH
 Temperature:22DEG
 Operators:HUA
 Test Date:2018-09-12

γ Range: 0 - 180DEG
 γ Interval: 0.5DEG
 Test System:EVERFINE GO-2000B_V1 SYSTEM V2.0.350
 Humidity:43%
 Test Distance:12.218m [K=1.0000]
 Remarks:

ISOCANDELA DIAGRAM

Test:U:120.2V I:0.2253A P:26.71W PF:0.9861 Lamp Flux:3375.07x1 lm		
NAME: ASD Lighting corp	TYPE:LED PANEL	WEIGHT:
SPEC.: ASD-ELP05-22D27CC-PRM(3500K)	DIM.: 603x603mm	SERIAL No.:BLD20180912N05
MFR.: ASD Lighting corp	SUR.:0.558*0.558	Shielding Angle:



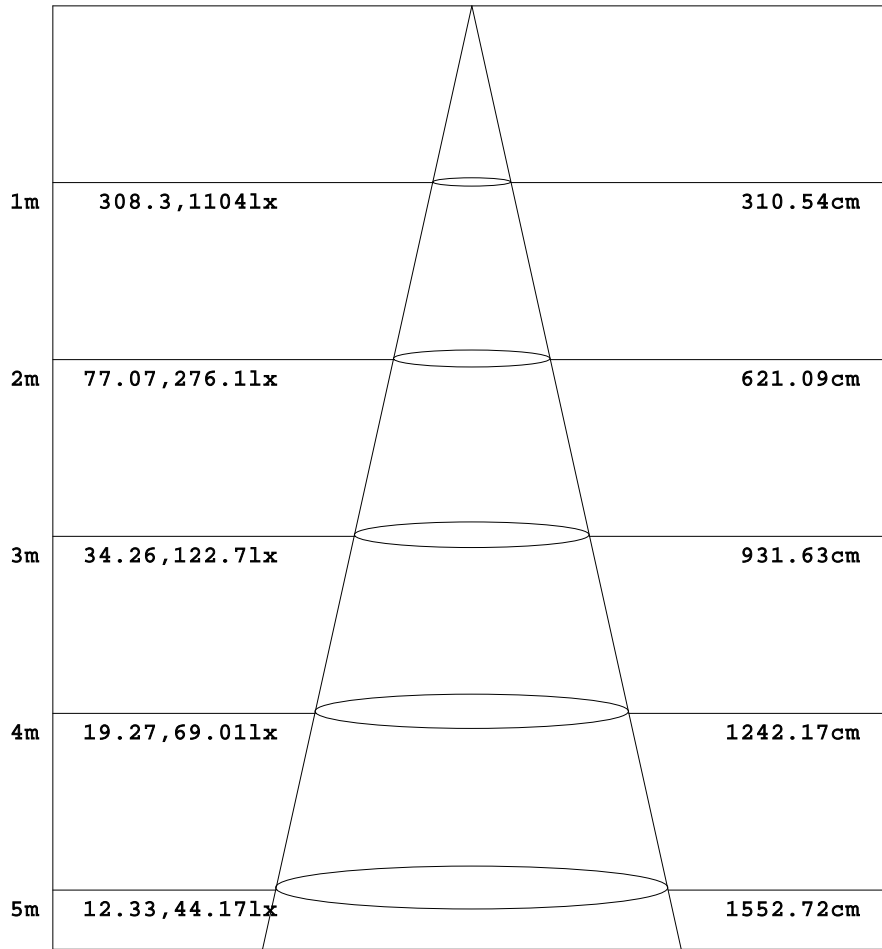
C Range: 0 - 360DEG
 C Interval: 5.0DEG
 Test Speed: HIGH
 Temperature:22DEG
 Operators:HUA
 Test Date:2018-09-12

γ Range: 0 - 180DEG
 γ Interval: 0.5DEG
 Test System:EVERFINE GO-2000B_V1 SYSTEM V2.0.350
 Humidity:43%
 Test Distance:12.218m [K=1.0000]
 Remarks:

AAI Figure

Test:U:120.2V I:0.2253A P:26.71W PF:0.9861 Lamp Flux:3375.07x1 lm		
NAME: ASD Lighting corp	TYPE:LED PANEL	WEIGHT:
SPEC.: ASD-ELP05-22D27CC-PRM(3500K)	DIM.: 603x603mm	SERIAL No.:BLD20180912N05
MFR.: ASD Lighting corp	SUR.:0.558*0.558	Shielding Angle:

Flux out:2386 lm



Height Eavg, Emax Angle:114.43deg Diameter

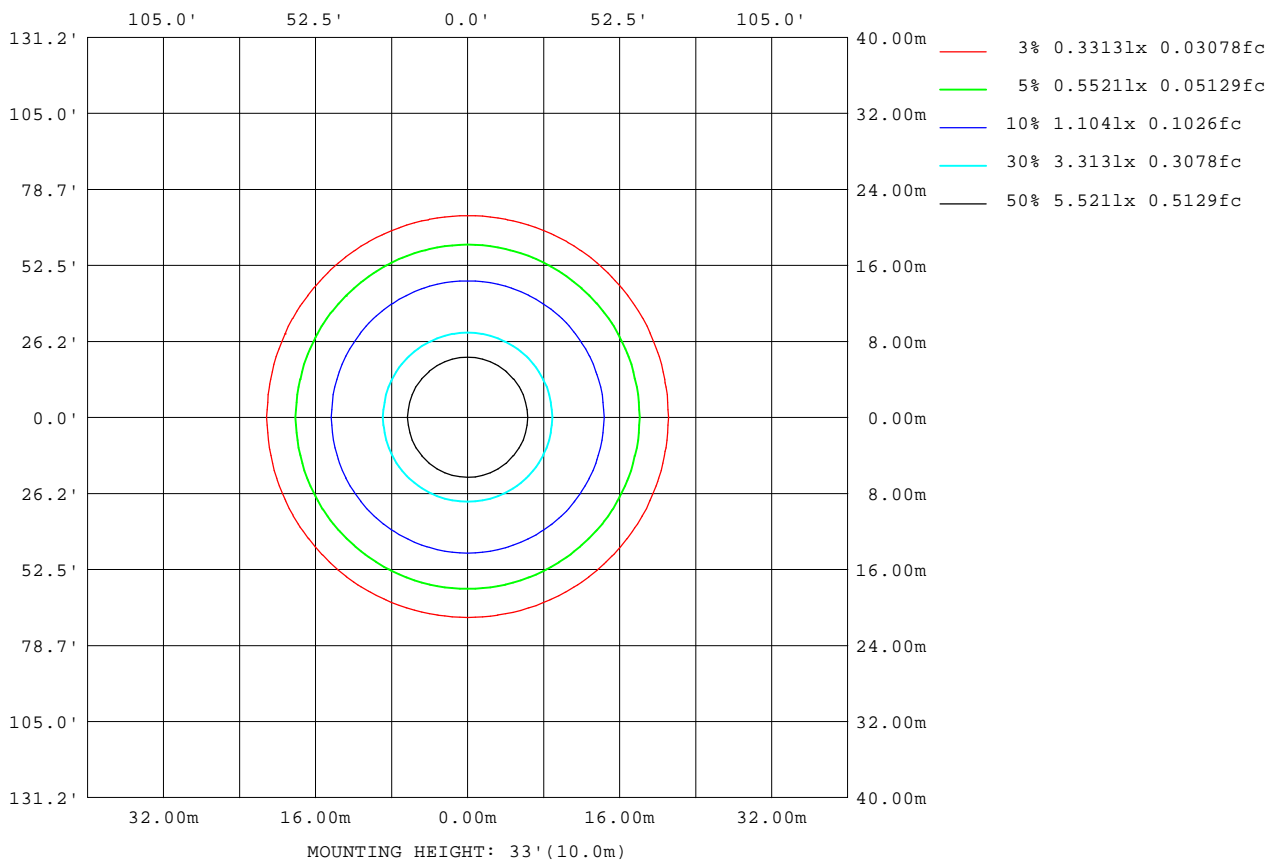
Note:The Curves indicate the illuminated area and the average illumination when the luminaire is at different distance.

C Range: 0 - 360DEG
 C Interval: 5.0DEG
 Test Speed: HIGH
 Temperature:22DEG
 Operators:HUA
 Test Date:2018-09-12

γ Range: 0 - 180DEG
 γ Interval: 0.5DEG
 Test System:EVERFINE GO-2000B_V1 SYSTEM V2.0.350
 Humidity:43%
 Test Distance:12.218m [K=1.0000]
 Remarks:

ISOLUX DIAGRAM

Test:U:120.2V I:0.2253A P:26.71W PF:0.9861 Lamp Flux:3375.07x1 lm		
NAME: ASD Lighting corp	TYPE:LED PANEL	WEIGHT:
SPEC.: ASD-ELP05-22D27CC-PRM(3500K)	DIM.: 603x603mm	SERIAL No.:BLD20180912N05
MFR.: ASD Lighting corp	SUR.:0.558*0.558	Shielding Angle:



C Range: 0 - 360DEG
 C Interval: 5.0DEG
 Test Speed: HIGH
 Temperature:22DEG
 Operators:HUA
 Test Date:2018-09-12

γ Range: 0 - 180DEG
 γ Interval: 0.5DEG
 Test System:EVERFINE GO-2000B_V1 SYSTEM V2.0.350
 Humidity:43%
 Test Distance:12.218m [K=1.0000]
 Remarks:

LED Avg.L Report

Test:U:120.2V I:0.2253A P:26.71W PF:0.9861 Lamp Flux:3375.07x1 lm		
NAME: ASD Lighting corp	TYPE:LED PANEL	WEIGHT:
SPEC.: ASD-ELP05-22D27CC-PRM(3500K)	DIM.: 603x603mm	SERIAL No.:BLD20180912N05
MFR.: ASD Lighting corp	SUR.:0.558*0.558	Shielding Angle:

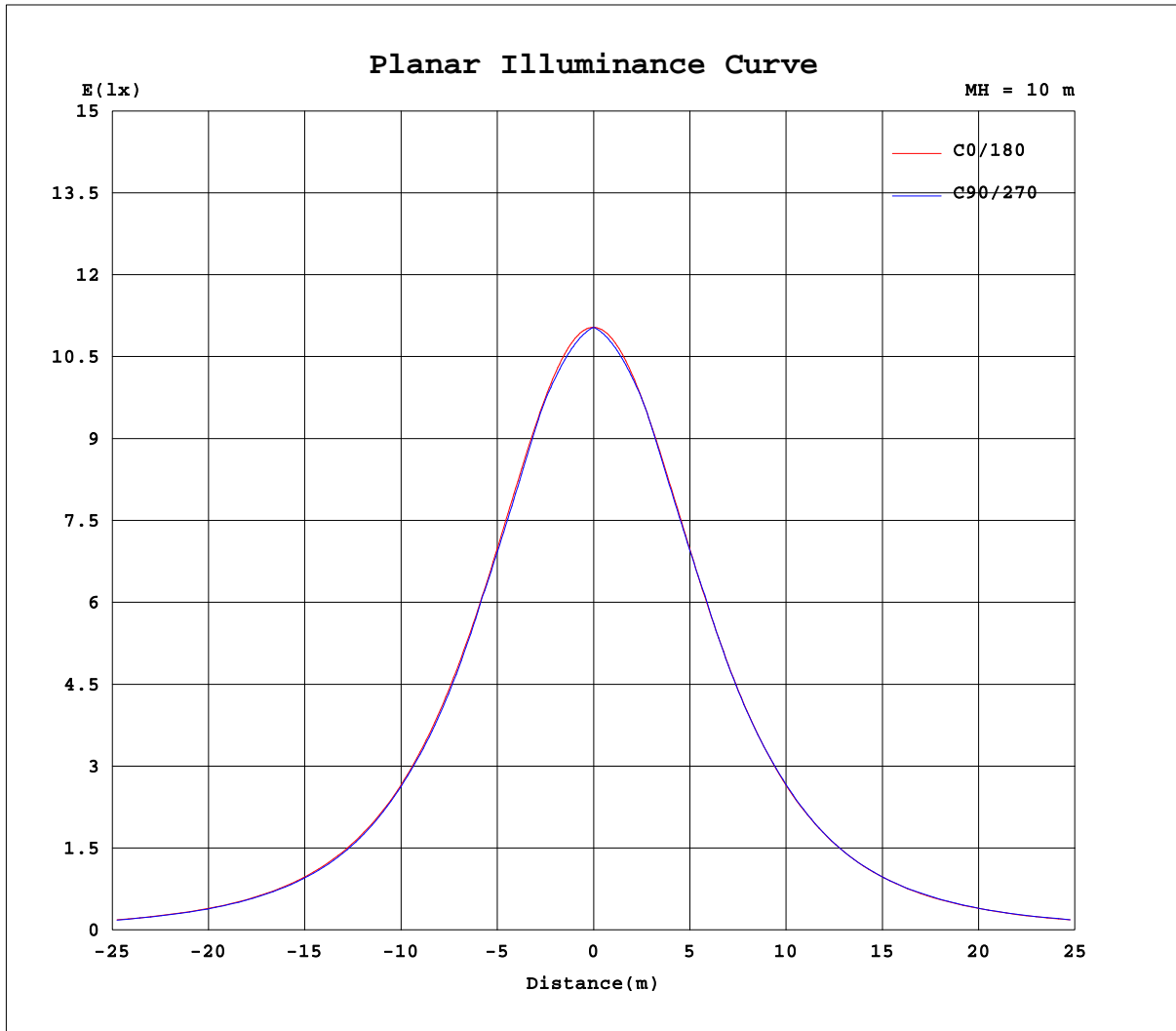
AvgL	cd/m2
L_0~180(65)av	3180
L_0~180(75)av	2938
L_0~180(85)av	1836
L_90~270(65)av	3172
L_90~270(75)av	2960
L_90~270(85)av	2443
L_45(65)av	3166
L_45(75)av	2953
L_45(85)av	2438

Standard: GB/T 29293-2012

C Range: 0 - 360DEG
C Interval: 5.0DEG
Test Speed: HIGH
Temperature:22DEG
Operators:HUA
Test Date:2018-09-12

γ Range: 0 - 180DEG
 γ Interval: 0.5DEG
Test System:EVERFINE GO-2000B_V1 SYSTEM V2.0.350
Humidity:43%
Test Distance:12.218m [K=1.0000]
Remarks:

Planar Illuminance Curve



C Range: 0 - 360DEG
 C Interval: 5.0DEG
 Test Speed: HIGH
 Temperature: 22DEG
 Operators: HUA
 Test Date: 2018-09-12

γ Range: 0 - 180DEG
 γ Interval: 0.5DEG
 Test System: EVERFINE GO-2000B_V1 SYSTEM V2.0.350
 Humidity: 43%
 Test Distance: 12.218m [K=1.0000]
 Remarks:

LUMINOUS DISTRIBUTION INTENSITY DATA

Test:U:120.2V I:0.2253A P:26.71W PF:0.9861 Lamp Flux:3375.07x1 lm		
NAME: ASD Lighting corp	TYPE:LED PANEL	WEIGHT:
SPEC.: ASD-ELP05-22D27CC-PRM(3500K)	DIM.: 603x603mm	SERIAL No.:BLD20180912N05
MFR.: ASD Lighting corp	SUR.:0.558*0.558	Shielding Angle:

Table--1

UNIT: cd

C(DEG) γ (DEG)	0	5	10	15	20	25	30	35	40	45	50	55	60	65	70	75	80	85	90
0	1104	1104	1104	1104	1104	1104	1104	1104	1104	1104	1104	1104	1104	1104	1104	1104	1104	1104	1104
5	1100	1099	1097	1096	1095	1095	1094	1093	1093	1092	1091	1091	1091	1090	1090	1090	1090	1090	1090
10	1086	1084	1082	1080	1079	1077	1077	1076	1075	1075	1075	1075	1075	1075	1075	1075	1076	1076	1076
15	1063	1060	1057	1055	1054	1053	1053	1053	1053	1054	1055	1056	1057	1059	1059	1059	1059	1059	1059
20	1032	1027	1024	1022	1022	1022	1023	1024	1026	1028	1028	1026	1025	1023	1022	1022	1021	1021	1021
25	992	987	983	982	982	984	987	988	987	984	982	981	980	980	980	980	980	980	980
30	943	938	935	934	936	940	940	936	934	932	932	933	934	935	937	938	939	939	939
35	886	880	878	879	883	883	879	877	877	878	881	884	881	879	878	877	876	876	875
40	823	817	815	818	821	816	814	815	818	819	816	814	812	812	812	811	812	811	811
45	753	747	746	751	747	745	746	751	747	744	743	743	743	744	745	746	746	746	745
50	676	670	672	673	669	671	673	669	668	668	669	671	671	669	668	667	666	665	665
55	595	589	594	590	589	592	588	587	589	590	588	586	585	584	584	583	583	583	583
60	509	504	507	503	507	503	503	505	504	501	500	500	500	500	500	500	501	501	501
65	419	415	415	417	414	415	416	414	413	413	414	414	413	412	412	411	411	411	410
70	328	327	325	325	326	325	324	324	325	324	324	323	323	322	321	321	321	320	320
75	237	236	235	237	235	235	235	235	234	234	234	233	233	233	232	232	231	231	231
80	149	140	137	143	148	148	148	147	146	145	145	144	144	145	144	144	144	143	143
85	51.0	44.3	50.8	59.7	63.9	64.6	64.5	63.9	63.1	62.3	61.4	60.5	60.0	59.4	58.6	58.1	58.0	57.9	58.0
90	0.77	1.58	1.58	1.54	1.49	1.68	2.24	2.60	2.71	2.94	3.04	3.14	3.26	3.33	3.34	3.50	3.76	3.97	4.12
95	0.00	0.00	0.00	0.00	0.00	0.00	0.00	0.00	0.00	0.00	0.00	0.00	0.00	0.00	0.00	0.00	0.00	0.00	0.00
100	0.00	0.00	0.00	0.00	0.00	0.00	0.00	0.00	0.00	0.00	0.00	0.00	0.00	0.00	0.00	0.00	0.00	0.00	0.00
105	0.00	0.00	0.00	0.00	0.00	0.00	0.00	0.00	0.00	0.00	0.00	0.00	0.00	0.00	0.00	0.00	0.00	0.00	0.00
110	0.00	0.00	0.00	0.00	0.00	0.00	0.00	0.00	0.00	0.00	0.00	0.00	0.00	0.00	0.00	0.00	0.00	0.00	0.00
115	0.00	0.00	0.00	0.00	0.00	0.00	0.00	0.00	0.00	0.00	0.00	0.00	0.00	0.00	0.00	0.00	0.00	0.00	0.00
120	0.00	0.00	0.00	0.00	0.00	0.00	0.00	0.00	0.00	0.00	0.00	0.00	0.00	0.00	0.00	0.00	0.00	0.00	0.00
125	0.00	0.00	0.00	0.00	0.00	0.00	0.00	0.00	0.00	0.00	0.00	0.00	0.00	0.00	0.00	0.00	0.00	0.00	0.00
130	0.00	0.00	0.00	0.00	0.00	0.00	0.00	0.00	0.00	0.00	0.00	0.00	0.00	0.00	0.00	0.00	0.00	0.00	0.00
135	0.00	0.00	0.00	0.00	0.00	0.00	0.00	0.00	0.00	0.00	0.00	0.00	0.00	0.00	0.00	0.00	0.00	0.00	0.00
140	0.00	0.00	0.00	0.00	0.00	0.00	0.00	0.00	0.00	0.00	0.00	0.00	0.00	0.00	0.00	0.00	0.00	0.00	0.00
145	0.00	0.00	0.00	0.00	0.00	0.00	0.00	0.00	0.00	0.00	0.00	0.00	0.00	0.00	0.00	0.00	0.00	0.00	0.00
150	0.00	0.00	0.00	0.00	0.00	0.00	0.00	0.00	0.00	0.00	0.00	0.00	0.00	0.00	0.00	0.00	0.00	0.00	0.00
155	0.00	0.00	0.00	0.00	0.00	0.00	0.00	0.00	0.00	0.00	0.00	0.00	0.00	0.00	0.00	0.00	0.00	0.00	0.00
160	0.00	0.00	0.00	0.00	0.00	0.00	0.00	0.00	0.00	0.00	0.00	0.00	0.00	0.00	0.00	0.00	0.00	0.00	0.00
165	0.00	0.00	0.00	0.00	0.00	0.00	0.00	0.00	0.00	0.00	0.00	0.00	0.00	0.00	0.00	0.00	0.00	0.00	0.00
170	0.00	0.00	0.00	0.00	0.00	0.00	0.00	0.00	0.00	0.00	0.00	0.00	0.00	0.00	0.00	0.00	0.00	0.00	0.00
175	0.00	0.00	0.00	0.00	0.00	0.00	0.00	0.00	0.00	0.00	0.00	0.00	0.00	0.00	0.00	0.00	0.00	0.00	0.00
180	0.00	0.00	0.00	0.00	0.00	0.00	0.00	0.00	0.00	0.00	0.00	0.00	0.00	0.00	0.00	0.00	0.00	0.00	0.00

C Range: 0 - 360DEG
 C Interval: 5.0DEG
 Test Speed: HIGH
 Temperature:22DEG
 Operators:HUA
 Test Date:2018-09-12

γ Range: 0 - 180DEG
 γ Interval: 0.5DEG
 Test System:EVERFINE GO-2000B_V1 SYSTEM V2.0.350
 Humidity:43%
 Test Distance:12.218m [K=1.0000]
 Remarks:

LUMINOUS DISTRIBUTION INTENSITY DATA

Test:U:120.2V I:0.2253A P:26.71W PF:0.9861 Lamp Flux:3375.07x1 lm		
NAME: ASD Lighting corp	TYPE:LED PANEL	WEIGHT:
SPEC.: ASD-ELP05-22D27CC-PRM(3500K)	DIM.: 603x603mm	SERIAL No.:BLD20180912N05
MFR.: ASD Lighting corp	SUR.:0.558*0.558	Shielding Angle:

Table--2

UNIT: cd

C(DEG) γ (DEG)	95	100	105	110	115	120	125	130	135	140	145	150	155	160	165	170	175	180	185
0	1104	1104	1104	1104	1104	1104	1104	1104	1104	1104	1104	1104	1104	1104	1104	1104	1104	1104	1104
5	1090	1090	1090	1090	1090	1091	1091	1091	1092	1092	1093	1093	1094	1095	1096	1097	1098	1099	1098
10	1075	1075	1075	1075	1075	1075	1074	1074	1074	1075	1075	1076	1076	1078	1079	1081	1083	1085	1083
15	1059	1059	1058	1059	1058	1057	1055	1054	1053	1052	1051	1051	1052	1052	1054	1056	1059	1062	1059
20	1021	1021	1021	1022	1022	1024	1025	1026	1026	1025	1022	1021	1020	1020	1021	1023	1026	1030	1026
25	980	980	979	979	979	979	979	980	982	984	986	984	981	980	980	981	985	990	985
30	939	938	937	936	934	933	931	930	930	931	933	937	937	933	931	932	935	941	936
35	875	875	876	877	878	880	882	879	876	875	874	876	880	880	876	875	878	884	879
40	811	811	810	810	810	811	812	814	817	816	812	811	812	817	814	812	814	821	815
45	745	745	745	744	742	741	740	740	741	744	748	743	742	743	747	743	744	751	744
50	665	665	665	666	667	668	668	667	665	665	667	671	668	666	669	668	667	674	668
55	583	582	582	582	583	583	584	585	587	586	584	585	590	587	586	590	586	593	587
60	500	500	500	499	499	498	498	498	499	500	502	500	500	504	500	503	501	506	502
65	410	410	410	411	411	412	412	412	411	410	411	413	412	412	415	412	413	417	414
70	320	320	320	320	321	321	321	322	322	323	322	321	322	323	322	323	324	326	325
75	231	231	231	232	232	232	232	232	232	232	232	233	232	232	233	233	233	236	235
80	143	143	144	144	144	143	143	143	144	144	144	145	145	145	141	134	135	149	148
85	57.9	57.8	57.8	58.1	58.5	58.8	59.3	59.9	60.6	61.4	62.0	62.3	62.2	61.0	56.8	48.7	39.9	48.5	58.6
90	4.02	3.72	3.38	3.09	2.86	2.63	2.47	2.22	2.03	1.99	1.74	1.53	1.52	1.52	1.52	1.51	1.51	1.36	0.91
95	0.00	0.00	0.00	0.00	0.00	0.00	0.00	0.00	0.00	0.00	0.00	0.00	0.00	0.00	0.00	0.00	0.00	0.00	0.00
100	0.00	0.00	0.00	0.00	0.00	0.00	0.00	0.00	0.00	0.00	0.00	0.00	0.00	0.00	0.00	0.00	0.00	0.00	0.00
105	0.00	0.00	0.00	0.00	0.00	0.00	0.00	0.00	0.00	0.00	0.00	0.00	0.00	0.00	0.00	0.00	0.00	0.00	0.00
110	0.00	0.00	0.00	0.00	0.00	0.00	0.00	0.00	0.00	0.00	0.00	0.00	0.00	0.00	0.00	0.00	0.00	0.00	0.00
115	0.00	0.00	0.00	0.00	0.00	0.00	0.00	0.00	0.00	0.00	0.00	0.00	0.00	0.00	0.00	0.00	0.00	0.00	0.00
120	0.00	0.00	0.00	0.00	0.00	0.00	0.00	0.00	0.00	0.00	0.00	0.00	0.00	0.00	0.00	0.00	0.00	0.00	0.00
125	0.00	0.00	0.00	0.00	0.00	0.00	0.00	0.00	0.00	0.00	0.00	0.00	0.00	0.00	0.00	0.00	0.00	0.00	0.00
130	0.00	0.00	0.00	0.00	0.00	0.00	0.00	0.00	0.00	0.00	0.00	0.00	0.00	0.00	0.00	0.00	0.00	0.00	0.00
135	0.00	0.00	0.00	0.00	0.00	0.00	0.00	0.00	0.00	0.00	0.00	0.00	0.00	0.00	0.00	0.00	0.00	0.00	0.00
140	0.00	0.00	0.00	0.00	0.00	0.00	0.00	0.00	0.00	0.00	0.00	0.00	0.00	0.00	0.00	0.00	0.00	0.00	0.00
145	0.00	0.00	0.00	0.00	0.00	0.00	0.00	0.00	0.00	0.00	0.00	0.00	0.00	0.00	0.00	0.00	0.00	0.00	0.00
150	0.00	0.00	0.00	0.00	0.00	0.00	0.00	0.00	0.00	0.00	0.00	0.00	0.00	0.00	0.00	0.00	0.00	0.00	0.00
155	0.00	0.00	0.00	0.00	0.00	0.00	0.00	0.00	0.00	0.00	0.00	0.00	0.00	0.00	0.00	0.00	0.00	0.00	0.00
160	0.00	0.00	0.00	0.00	0.00	0.00	0.00	0.00	0.00	0.00	0.00	0.00	0.00	0.00	0.00	0.00	0.00	0.00	0.00
165	0.00	0.00	0.00	0.00	0.00	0.00	0.00	0.00	0.00	0.00	0.00	0.00	0.00	0.00	0.00	0.00	0.00	0.00	0.00
170	0.00	0.00	0.00	0.00	0.00	0.00	0.00	0.00	0.00	0.00	0.00	0.00	0.00	0.00	0.00	0.00	0.00	0.00	0.00
175	0.00	0.00	0.00	0.00	0.00	0.00	0.00	0.00	0.00	0.00	0.00	0.00	0.00	0.00	0.00	0.00	0.00	0.00	0.00
180	0.00	0.00	0.00	0.00	0.00	0.00	0.00	0.00	0.00	0.00	0.00	0.00	0.00	0.00	0.00	0.00	0.00	0.00	0.00

C Range: 0 - 360DEG
 C Interval: 5.0DEG
 Test Speed: HIGH
 Temperature:22DEG
 Operators:HUA
 Test Date:2018-09-12

γ Range: 0 - 180DEG
 γ Interval: 0.5DEG
 Test System:EVERFINE GO-2000B_V1 SYSTEM V2.0.350
 Humidity:43%
 Test Distance:12.218m [K=1.0000]
 Remarks:

LUMINOUS DISTRIBUTION INTENSITY DATA

Test:U:120.2V I:0.2253A P:26.71W PF:0.9861 Lamp Flux:3375.07x1 lm		
NAME: ASD Lighting corp	TYPE:LED PANEL	WEIGHT:
SPEC.: ASD-ELP05-22D27CC-PRM(3500K)	DIM.: 603x603mm	SERIAL No.:BLD20180912N05
MFR.: ASD Lighting corp	SUR.:0.558*0.558	Shielding Angle:

Table--3

UNIT: cd

C(DEG) γ (DEG)	190	195	200	205	210	215	220	225	230	235	240	245	250	255	260	265	270	275	280
0	1104	1104	1104	1104	1104	1104	1104	1104	1104	1104	1104	1104	1104	1104	1104	1104	1104	1104	1104
5	1097	1096	1095	1095	1094	1093	1093	1092	1092	1092	1091	1091	1091	1091	1091	1091	1091	1091	1091
10	1081	1080	1078	1077	1077	1076	1076	1076	1076	1076	1076	1077	1077	1077	1078	1078	1078	1078	1077
15	1056	1055	1054	1053	1053	1053	1054	1055	1056	1058	1059	1060	1061	1061	1061	1062	1062	1062	1062
20	1023	1022	1021	1021	1023	1025	1027	1029	1029	1029	1027	1026	1025	1025	1025	1025	1025	1025	1025
25	982	981	981	983	987	989	988	985	984	983	983	983	984	984	984	985	985	985	985
30	933	933	935	939	940	937	935	934	935	936	938	940	941	943	944	945	945	945	944
35	877	878	882	883	879	878	879	881	884	888	886	884	883	883	882	882	882	883	883
40	813	817	820	816	815	817	820	823	820	818	818	818	818	819	819	819	820	819	819
45	744	749	746	745	748	753	750	748	747	748	749	751	753	754	755	755	755	755	755
50	670	672	669	672	675	672	671	672	674	677	677	677	676	675	675	675	675	676	676
55	591	588	590	593	590	590	593	595	594	593	593	593	593	593	594	594	594	594	594
60	505	503	508	504	505	508	507	507	507	507	508	509	510	511	512	512	513	513	512
65	414	418	415	417	419	418	418	419	421	422	422	422	423	423	423	423	423	423	424
70	324	325	327	327	327	329	331	331	331	332	332	332	333	333	334	334	334	334	334
75	236	237	236	238	239	240	241	241	242	243	244	244	245	245	245	245	246	246	246
80	149	149	151	151	152	153	153	154	155	155	156	157	158	158	158	159	159	159	159
85	59.0	62.2	66.5	68.3	69.3	70.0	70.3	70.5	70.8	71.2	71.7	72.2	72.7	73.2	73.9	74.5	74.5	74.2	73.6
90	0.91	0.93	1.29	2.99	3.98	4.89	5.63	6.21	7.07	7.91	8.73	9.53	10.3	11.1	11.8	12.4	12.4	12.1	11.5
95	0.00	0.00	0.00	0.00	0.00	0.00	0.00	0.00	0.00	0.00	0.00	0.00	0.00	0.00	0.00	0.00	0.00	0.00	0.00
100	0.00	0.00	0.00	0.00	0.00	0.00	0.00	0.00	0.00	0.00	0.00	0.00	0.00	0.00	0.00	0.00	0.00	0.00	0.00
105	0.00	0.00	0.00	0.00	0.00	0.00	0.00	0.00	0.00	0.00	0.00	0.00	0.00	0.00	0.00	0.00	0.00	0.00	0.00
110	0.00	0.00	0.00	0.00	0.00	0.00	0.00	0.00	0.00	0.00	0.00	0.00	0.00	0.00	0.00	0.00	0.00	0.00	0.00
115	0.00	0.00	0.00	0.00	0.00	0.00	0.00	0.00	0.00	0.00	0.00	0.00	0.00	0.00	0.00	0.00	0.00	0.00	0.00
120	0.00	0.00	0.00	0.00	0.00	0.00	0.00	0.00	0.00	0.00	0.00	0.00	0.00	0.00	0.00	0.00	0.00	0.00	0.00
125	0.00	0.00	0.00	0.00	0.00	0.00	0.00	0.00	0.00	0.00	0.00	0.00	0.00	0.00	0.00	0.00	0.00	0.00	0.00
130	0.00	0.00	0.00	0.00	0.00	0.00	0.00	0.00	0.00	0.00	0.00	0.00	0.00	0.00	0.00	0.00	0.00	0.00	0.00
135	0.00	0.00	0.00	0.00	0.00	0.00	0.00	0.00	0.00	0.00	0.00	0.00	0.00	0.00	0.00	0.00	0.00	0.00	0.00
140	0.00	0.00	0.00	0.00	0.00	0.00	0.00	0.00	0.00	0.00	0.00	0.00	0.00	0.00	0.00	0.00	0.00	0.00	0.00
145	0.00	0.00	0.00	0.00	0.00	0.00	0.00	0.00	0.00	0.00	0.00	0.00	0.00	0.00	0.00	0.00	0.00	0.00	0.00
150	0.00	0.00	0.00	0.00	0.00	0.00	0.00	0.00	0.00	0.00	0.00	0.00	0.00	0.00	0.00	0.00	0.00	0.00	0.00
155	0.00	0.00	0.00	0.00	0.00	0.00	0.00	0.00	0.00	0.00	0.00	0.00	0.00	0.00	0.00	0.00	0.00	0.00	0.00
160	0.00	0.00	0.00	0.00	0.00	0.00	0.00	0.00	0.00	0.00	0.00	0.00	0.00	0.00	0.00	0.00	0.00	0.00	0.00
165	0.00	0.00	0.00	0.00	0.00	0.00	0.00	0.00	0.00	0.00	0.00	0.00	0.00	0.00	0.00	0.00	0.00	0.00	0.00
170	0.00	0.00	0.00	0.00	0.00	0.00	0.00	0.00	0.00	0.00	0.00	0.00	0.00	0.00	0.00	0.00	0.00	0.00	0.00
175	0.00	0.00	0.00	0.00	0.00	0.00	0.00	0.00	0.00	0.00	0.00	0.00	0.00	0.00	0.00	0.00	0.00	0.00	0.00
180	0.00	0.00	0.00	0.00	0.00	0.00	0.00	0.00	0.00	0.00	0.00	0.00	0.00	0.00	0.00	0.00	0.00	0.00	0.00

C Range: 0 - 360DEG
 C Interval: 5.0DEG
 Test Speed: HIGH
 Temperature:22DEG
 Operators:HUA
 Test Date:2018-09-12

γ Range: 0 - 180DEG
 γ Interval: 0.5DEG
 Test System:EVERFINE GO-2000B_V1 SYSTEM V2.0.350
 Humidity:43%
 Test Distance:12.218m [K=1.0000]
 Remarks:

LUMINOUS DISTRIBUTION INTENSITY DATA

Test:U:120.2V I:0.2253A P:26.71W PF:0.9861 Lamp Flux:3375.07x1 lm		
NAME: ASD Lighting corp	TYPE:LED PANEL	WEIGHT:
SPEC.: ASD-ELP05-22D27CC-PRM(3500K)	DIM.: 603x603mm	SERIAL No.:BLD20180912N05
MFR.: ASD Lighting corp	SUR.:0.558*0.558	Shielding Angle:

Table--4

UNIT: cd

C(DEC) γ (DEC)	285	290	295	300	305	310	315	320	325	330	335	340	345	350	355				
0	1104	1104	1104	1104	1104	1104	1104	1104	1104	1104	1104	1104	1104	1104	1104				
5	1091	1091	1091	1092	1092	1092	1093	1093	1094	1094	1095	1096	1097	1098	1099				
10	1077	1077	1077	1077	1077	1077	1077	1077	1077	1078	1078	1079	1080	1082	1084				
15	1062	1062	1061	1060	1059	1057	1056	1055	1054	1054	1054	1055	1056	1058	1060				
20	1025	1026	1027	1028	1030	1031	1031	1029	1026	1024	1023	1023	1023	1025	1028				
25	985	984	984	984	985	985	987	990	991	989	986	984	983	984	987				
30	943	942	940	939	937	936	936	937	939	942	942	937	935	935	938				
35	883	884	885	887	889	885	883	881	880	882	886	885	880	879	881				
40	819	819	819	819	820	821	824	822	819	817	818	823	820	816	817				
45	755	754	752	751	750	749	749	751	755	750	748	749	753	748	747				
50	676	677	678	679	679	676	674	673	674	677	674	672	675	673	671				
55	594	594	594	594	595	596	597	595	593	592	595	592	592	595	590				
60	512	511	511	510	509	509	509	510	511	508	507	510	505	508	504				
65	424	424	424	424	424	423	422	420	420	421	420	417	419	416	416				
70	335	335	335	335	334	334	333	333	331	329	329	329	327	326	327				
75	246	246	246	246	245	245	244	243	242	241	240	238	239	237	236				
80	159	159	158	158	156	156	155	155	154	154	153	152	151	151	149				
85	72.9	72.5	72.2	71.8	71.4	71.2	70.9	70.7	70.4	70.0	69.1	67.3	62.3	58.7	58.3				
90	10.6	9.80	9.06	8.35	7.75	7.04	6.23	5.38	4.49	3.55	2.09	0.88	0.88	0.88	0.88				
95	0.00	0.00	0.00	0.00	0.00	0.00	0.00	0.00	0.00	0.00	0.00	0.00	0.00	0.00	0.00				
100	0.00	0.00	0.00	0.00	0.00	0.00	0.00	0.00	0.00	0.00	0.00	0.00	0.00	0.00	0.00				
105	0.00	0.00	0.00	0.00	0.00	0.00	0.00	0.00	0.00	0.00	0.00	0.00	0.00	0.00	0.00				
110	0.00	0.00	0.00	0.00	0.00	0.00	0.00	0.00	0.00	0.00	0.00	0.00	0.00	0.00	0.00				
115	0.00	0.00	0.00	0.00	0.00	0.00	0.00	0.00	0.00	0.00	0.00	0.00	0.00	0.00	0.00				
120	0.00	0.00	0.00	0.00	0.00	0.00	0.00	0.00	0.00	0.00	0.00	0.00	0.00	0.00	0.00				
125	0.00	0.00	0.00	0.00	0.00	0.00	0.00	0.00	0.00	0.00	0.00	0.00	0.00	0.00	0.00				
130	0.00	0.00	0.00	0.00	0.00	0.00	0.00	0.00	0.00	0.00	0.00	0.00	0.00	0.00	0.00				
135	0.00	0.00	0.00	0.00	0.00	0.00	0.00	0.00	0.00	0.00	0.00	0.00	0.00	0.00	0.00				
140	0.00	0.00	0.00	0.00	0.00	0.00	0.00	0.00	0.00	0.00	0.00	0.00	0.00	0.00	0.00				
145	0.00	0.00	0.00	0.00	0.00	0.00	0.00	0.00	0.00	0.00	0.00	0.00	0.00	0.00	0.00				
150	0.00	0.00	0.00	0.00	0.00	0.00	0.00	0.00	0.00	0.00	0.00	0.00	0.00	0.00	0.00				
155	0.00	0.00	0.00	0.00	0.00	0.00	0.00	0.00	0.00	0.00	0.00	0.00	0.00	0.00	0.00				
160	0.00	0.00	0.00	0.00	0.00	0.00	0.00	0.00	0.00	0.00	0.00	0.00	0.00	0.00	0.00				
165	0.00	0.00	0.00	0.00	0.00	0.00	0.00	0.00	0.00	0.00	0.00	0.00	0.00	0.00	0.00				
170	0.00	0.00	0.00	0.00	0.00	0.00	0.00	0.00	0.00	0.00	0.00	0.00	0.00	0.00	0.00				
175	0.00	0.00	0.00	0.00	0.00	0.00	0.00	0.00	0.00	0.00	0.00	0.00	0.00	0.00	0.00				
180	0.00	0.00	0.00	0.00	0.00	0.00	0.00	0.00	0.00	0.00	0.00	0.00	0.00	0.00	0.00				

C Range: 0 - 360DEG
 C Interval: 5.0DEG
 Test Speed: HIGH
 Temperature:22DEG
 Operators:HUA
 Test Date:2018-09-12

γ Range: 0 - 180DEG
 γ Interval: 0.5DEG
 Test System:EVERFINE GO-2000B_V1 SYSTEM V2.0.350
 Humidity:43%
 Test Distance:12.218m [K=1.0000]
 Remarks: