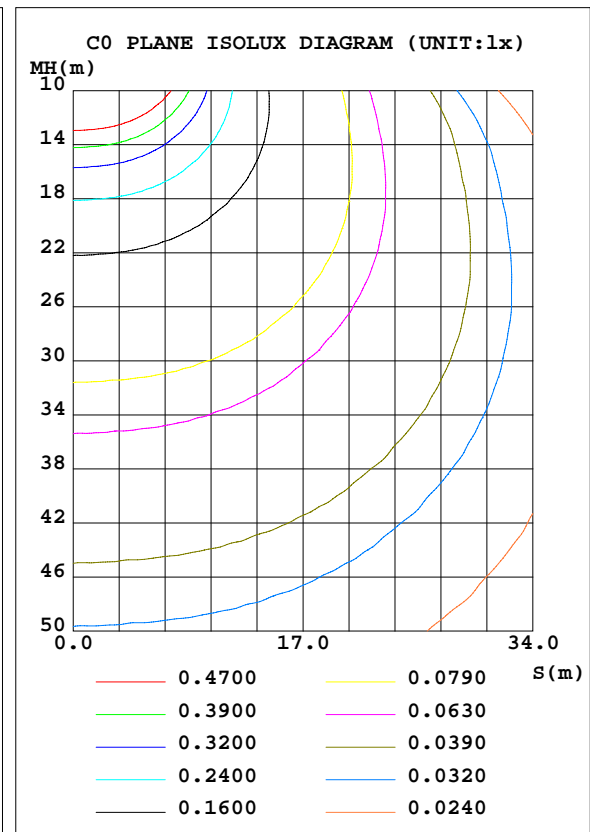
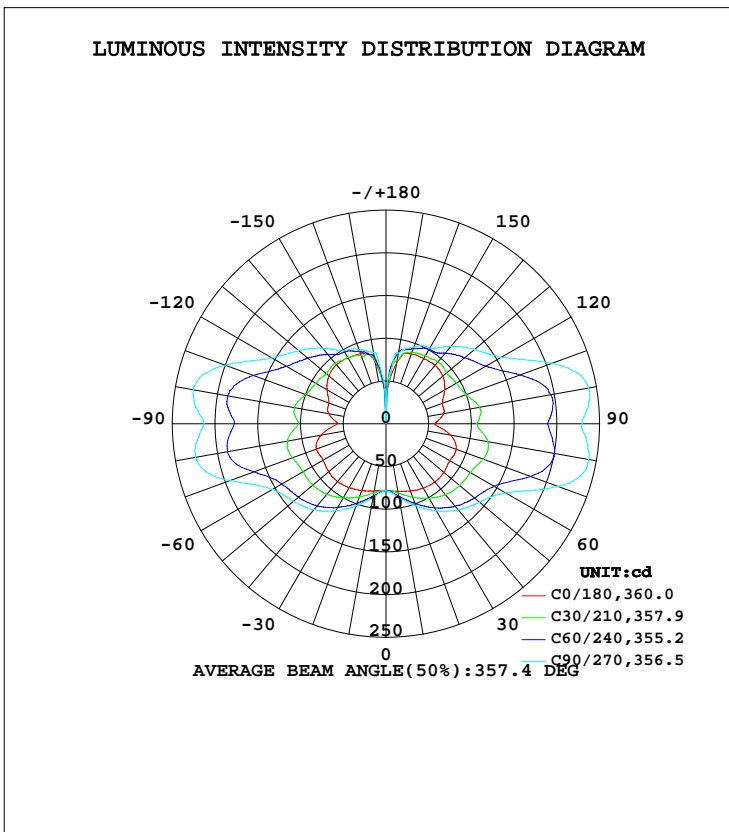


LUMINAIRE PHOTOMETRIC TEST REPORT

Test:U:277.00V I:0.0826A P:19.340W PF:0.8448 Freq:60.00Hz Lamp Flux:1550.76x1 lm		
NAME:	TYPE:LED	WEIGHT:
SPEC.:	DIM.:	SERIAL No.:
MFR.: ASD Lighting corp	SUR.:	Shielding Angle:

DATA OF LAMP		PHOTOMETRIC DATA Eff: 80.18 lm/W			
MODEL	SD-LWS27-MV-18D18CC-BK	I <sub>max</sub> (cd)	241.5	S/MH(C0/180)	1.69
NOMINAL POWER(W)	18	LOR(%)	100.0	S/MH(C90/270)	2.32
RATED VOLTAGE(V)	120-277	TOTAL FLUX(lm)	1550.8	η UP, DN(C0-180)	24.4,26.4
NOMINAL FLUX(lm)	1550.76	CIE CLASS	DIFFUSE	η UP, DN(C180-360)	23.7,25.5
LAMPS INSIDE	1	η up(%)	48.1	CIBSE SHR NOM	2.00
TEST VOLTAGE(V)	277	η down(%)	51.9	CIBSE SHR MAX	2.00



C Range: 0 - 360DEG  
 C Interval: 15.0DEG  
 Test Speed: HIGH  
 Temperature: 25.0DEG  
 Operators: Alan Wang  
 Test Date: 08 May 2023

γ Range: 0 - 180DEG  
 γ Interval: 1.0DEG  
 Test System: EVERFINE GO-R5000\_V2 SYSTEM V2.00.416  
 Humidity: 42.1%  
 Test Distance: 2.500m [K=1.0390]  
 Remarks:

## ZONAL FLUX DIAGRAM

## ZONAL FLUX DIAGRAM:

$\gamma$	C0	C45	C90	C135	C180	C225	C270	C315	$\gamma$	$\Phi$ zone	$\Phi$ total	%lum,lamp
10	80.41	84.20	87.61	83.99	79.95	84.37	87.44	83.98	0- 10	7.768	7.768	0.50,0.50
20	83.80	96.07	102.2	94.95	83.37	95.78	102.2	95.16	10- 20	25.35	33.12	2.14,2.14
30	86.89	108.0	117.5	106.7	86.12	107.7	117.6	106.4	20- 30	46.25	79.38	5.12,5.12
40	89.10	118.6	131.7	116.4	88.37	117.8	131.0	116.5	30- 40	69.12	148.5	9.58,9.58
50	88.52	124.9	142.8	122.2	87.53	123.9	141.3	122.1	40- 50	91.01	239.5	15.4,15.4
60	86.22	130.3	162.0	126.9	85.04	127.2	153.7	125.3	50- 60	109.9	349.4	22.5,22.5
70	87.53	147.7	214.2	141.3	86.72	138.1	194.2	134.7	60- 70	133.1	482.5	31.1,31.1
80	76.55	158.6	241.0	149.9	76.98	150.3	226.7	142.9	70- 80	161.0	643.5	41.5,41.5
90	56.95	146.6	229.4	137.9	56.88	138.3	213.0	131.1	80- 90	161.2	804.7	51.9,51.9
100	68.49	150.5	241.0	143.7	68.07	146.2	229.1	137.4	90-100	159.3	964.0	62.2,62.2
110	70.22	130.8	207.4	127.4	71.31	130.6	200.3	121.8	100-110	151.0	1115	71.9,71.9
120	79.30	115.1	155.4	113.8	79.66	114.3	154.0	109.6	110-120	121.3	1236	79.7,79.7
130	86.85	106.9	135.3	106.3	87.42	106.0	133.4	101.9	120-130	99.33	1336	86.1,86.1
140	89.43	98.08	118.3	97.27	90.07	95.85	115.5	93.71	130-140	80.66	1416	91.3,91.3
150	88.18	97.57	102.4	95.63	89.01	94.26	98.64	93.71	140-150	61.03	1477	95.3,95.3
160	87.24	91.31	95.19	89.51	87.41	87.09	91.54	91.13	150-160	42.82	1520	98,98
170	72.35	80.85	84.25	77.20	73.75	74.27	84.80	84.09	160-170	24.45	1545	99.6,99.6
180	41.66	34.76	0	33.12	42.74	36.43	12.92	29.88	170-180	6.215	1551	100,100
DEG	LUMINOUS INTENSITY:cd									UNIT:lm		

Conical surface Flux(90deg): 191.46 lm

%lum = 12.3%

%lamp = 12.3%

Conical surface Flux(120deg): 349.38 lm

%lum = 22.5%

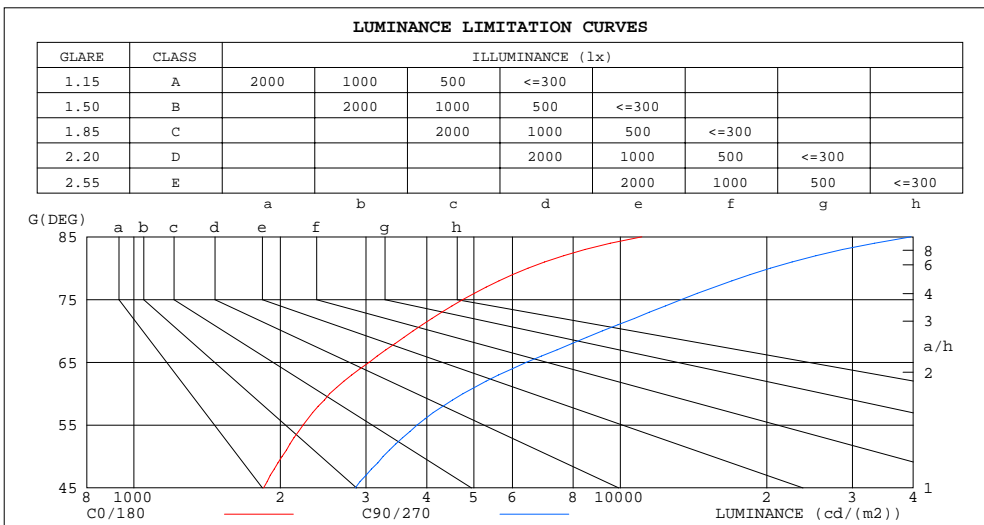
%lamp = 22.5%

C Range: 0 - 360DEG  
 C Interval: 15.0DEG  
 Test Speed: HIGH  
 Temperature: 25.0DEG  
 Operators: Alan Wang  
 Test Date: 08 May 2023

$\gamma$  Range: 0 - 180DEG  
 $\gamma$  Interval: 1.0DEG  
 Test System: EVERFINE GO-R5000\_V2 SYSTEM V2.00.416  
 Humidity: 42.1%  
 Test Distance: 2.500m [K=1.0390]  
 Remarks:

LUMINANCE LIMITATION CURVES

Test:U:277.00V I:0.0826A P:19.340W PF:0.8448 Freq:60.00Hz Lamp Flux:1550.76x1 lm		
NAME:	TYPE:LED	WEIGHT:
SPEC.:	DIM.:	SERIAL No.:
MFR.: ASD Lighting corp	SUR.:	Shielding Angle:



LUMINANCE cd/(m2)		
G(DEG)	C0/180	C90/270
85	11065	39583
80	6459	20333
75	4746	13345
70	3750	9178
65	3046	6409
60	2527	4748
55	2228	3820
50	2018	3254
45	1847	2852

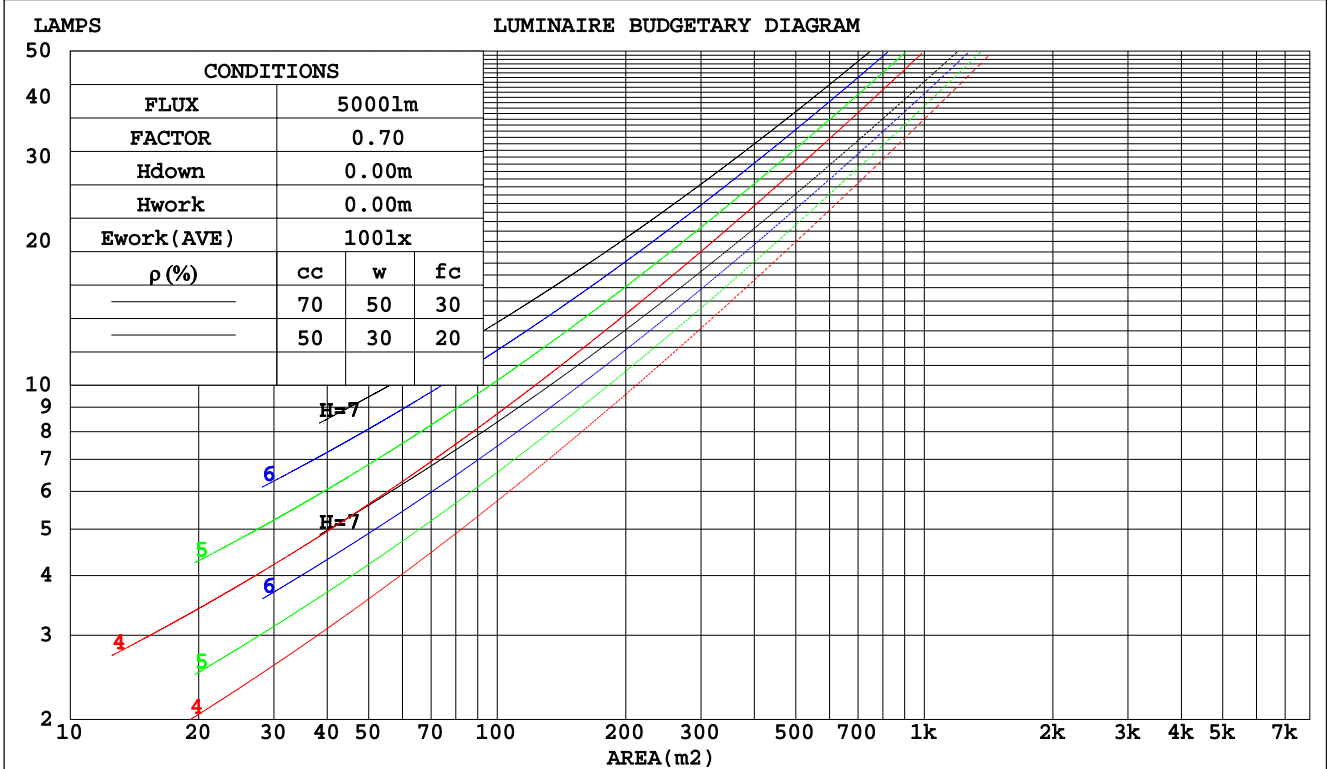
C Range: 0 - 360DEG  
 C Interval: 15.0DEG  
 Test Speed: HIGH  
 Temperature: 25.0DEG  
 Operators: Alan Wang  
 Test Date: 08 May 2023

$\gamma$  Range: 0 - 180DEG  
 $\gamma$  Interval: 1.0DEG  
 Test System: EVERFINE GO-R5000\_V2 SYSTEM V2.00.416  
 Humidity: 42.1%  
 Test Distance: 2.500m [K=1.0390]  
 Remarks:

CU AND LUMINAIRE BUDGETARY ESTIMATE DIAGRAM

Test:U:277.00V I:0.0826A P:19.340W PF:0.8448 Freq:60.00Hz Lamp Flux:1550.76x1 lm		
NAME:	TYPE:LED	WEIGHT:
SPEC.:	DIM.:	SERIAL No.:
MFR.: ASD Lighting corp	SUR.:	Shielding Angle:

pcc	80%			70%			50%			30%			10%			0
	50%	30%	10%	50%	30%	10%	50%	30%	10%	50%	30%	10%	50%	30%	10%	0
pw																0
pfc	20%			20%			20%			20%			20%			0
RCR	RCR:Room Cavity Ratio						Coefficients of Utilization(CU)									
0.0	1.08	1.08	1.08	.99	.99	.99	.84	.84	.84	.71	.71	.71	.58	.58	.58	.52
1.0	.86	.80	.75	.79	.74	.69	.66	.62	.58	.54	.51	.48	.43	.41	.38	.33
2.0	.73	.64	.57	.67	.59	.53	.55	.49	.44	.45	.40	.36	.35	.31	.29	.24
3.0	.62	.53	.46	.57	.49	.42	.47	.41	.35	.38	.33	.29	.29	.26	.22	.18
4.0	.54	.45	.37	.50	.41	.34	.41	.34	.29	.33	.28	.23	.25	.21	.18	.14
5.0	.48	.38	.31	.44	.35	.29	.36	.29	.24	.29	.24	.19	.22	.18	.15	.11
6.0	.42	.33	.26	.39	.30	.24	.32	.25	.20	.26	.20	.16	.20	.16	.13	.09
7.0	.38	.29	.23	.35	.27	.21	.29	.22	.17	.23	.18	.14	.18	.14	.11	.08
8.0	.34	.26	.20	.31	.24	.18	.26	.20	.15	.21	.16	.12	.16	.12	.09	.07
9.0	.31	.23	.17	.29	.21	.16	.24	.18	.13	.19	.14	.11	.15	.11	.08	.06
10.0	.28	.20	.15	.26	.19	.14	.22	.16	.12	.18	.13	.10	.14	.10	.07	.05



C Range: 0 - 360DEG  
 C Interval: 15.0DEG  
 Test Speed: HIGH  
 Temperature: 25.0DEG  
 Operators: Alan Wang  
 Test Date: 08 May 2023

γ Range: 0 - 180DEG  
 γ Interval: 1.0DEG  
 Test System: EVERFINE GO-R5000\_V2 SYSTEM V2.00.416  
 Humidity: 42.1%  
 Test Distance: 2.500m [K=1.0390]  
 Remarks:

WEC AND CCEC

Test:U:277.00V I:0.0826A P:19.340W PF:0.8448 Freq:60.00Hz Lamp Flux:1550.76x1 lm		
NAME:	TYPE:LED	WEIGHT:
SPEC.:	DIM.:	SERIAL No.:
MFR.: ASD Lighting corp	SUR.:	Shielding Angle:

ρcc	80%			70%			50%			30%			10%			0
ρw	50%	30%	10%	50%	30%	10%	50%	30%	10%	50%	30%	10%	50%	30%	10%	0
ρfc	20%			20%			20%			20%			20%			0
RCR	RCR:Room Cavity Ratio						Wall Exitance Coefficients(WEC)									
0.0																
1.0	.424	.241	.076	.402	.230	.073	.361	.207	.066	.324	.187	.060	.289	.167	.054	
2.0	.351	.193	.059	.331	.183	.056	.294	.163	.051	.259	.145	.046	.227	.129	.041	
3.0	.305	.162	.049	.287	.154	.046	.252	.137	.042	.221	.121	.037	.191	.106	.033	
4.0	.270	.140	.041	.254	.133	.039	.222	.118	.035	.193	.104	.031	.166	.090	.027	
5.0	.243	.124	.036	.228	.117	.034	.199	.104	.031	.172	.091	.027	.147	.079	.024	
6.0	.221	.111	.032	.207	.105	.030	.180	.092	.027	.156	.081	.024	.132	.070	.021	
7.0	.203	.100	.028	.190	.095	.027	.165	.084	.024	.142	.073	.021	.120	.063	.018	
8.0	.187	.092	.026	.175	.086	.024	.152	.076	.022	.131	.066	.019	.111	.057	.017	
9.0	.174	.084	.023	.163	.079	.022	.141	.070	.020	.121	.061	.017	.102	.052	.015	
10.0	.162	.078	.022	.152	.073	.020	.132	.065	.018	.113	.056	.016	.095	.048	.014	

ρcc	80%			70%			50%			30%			10%			0
ρw	50%	30%	10%	50%	30%	10%	50%	30%	10%	50%	30%	10%	50%	30%	10%	0
ρfc	20%			20%			20%			20%			20%			0
RCR	RCR:Room Cavity Ratio						Ceiling Cavity Exitance Coefficients(CCEC)									
0.0	.557	.557	.557	.476	.476	.476	.325	.325	.325	.187	.187	.187	.060	.060	.060	
1.0	.558	.525	.495	.477	.450	.426	.326	.310	.295	.188	.179	.171	.060	.058	.055	
2.0	.552	.504	.463	.473	.434	.400	.324	.300	.279	.187	.174	.164	.060	.056	.053	
3.0	.545	.489	.443	.467	.421	.384	.321	.293	.270	.185	.171	.159	.060	.056	.052	
4.0	.538	.477	.431	.461	.412	.374	.317	.287	.264	.184	.168	.156	.059	.055	.051	
5.0	.530	.468	.422	.455	.405	.367	.314	.283	.259	.182	.166	.154	.059	.054	.051	
6.0	.523	.461	.416	.450	.399	.362	.310	.279	.256	.180	.164	.152	.058	.054	.050	
7.0	.516	.455	.412	.444	.394	.359	.307	.276	.254	.178	.163	.151	.058	.053	.050	
8.0	.509	.450	.408	.439	.390	.356	.303	.274	.253	.177	.161	.150	.057	.053	.050	
9.0	.503	.445	.406	.434	.386	.354	.300	.272	.251	.175	.160	.150	.057	.053	.050	
10.0	.498	.441	.404	.429	.383	.352	.298	.270	.250	.174	.159	.149	.056	.052	.050	

C Range: 0 - 360DEG  
 C Interval: 15.0DEG  
 Test Speed: HIGH  
 Temperature: 25.0DEG  
 Operators: Alan Wang  
 Test Date: 08 May 2023

γ Range: 0 - 180DEG  
 γ Interval: 1.0DEG  
 Test System: EVERFINE GO-R5000\_V2 SYSTEM V2.00.416  
 Humidity: 42.1%  
 Test Distance: 2.500m [K=1.0390]  
 Remarks:

UGR(Unified Glare Rating) Table

Test:U:277.00V I:0.0826A P:19.340W PF:0.8448 Freq:60.00Hz Lamp Flux:1550.76x1 lm										
NAME:					TYPE:LED			WEIGHT:		
SPEC.:					DIM.:			SERIAL No.:		
MFR.: ASD Lighting corp					SUR.:			Shielding Angle:		
ceiling/cavity	0.7	0.7	0.5	0.5	0.3	0.7	0.7	0.5	0.5	0.3
walls	0.5	0.3	0.5	0.3	0.3	0.5	0.3	0.5	0.3	0.3
working plane	0.2	0.2	0.2	0.2	0.2	0.2	0.2	0.2	0.2	0.2
Room dimensions	Viewed crosswise					Viewed endwise				
x = 2H y = 2H	12.3	13.5	13.2	14.3	15.5	15.1	16.2	15.9	17.1	18.2
3H	15.3	16.3	16.2	17.2	18.4	19.5	20.6	20.4	21.5	22.6
4H	16.9	17.9	17.8	18.8	19.9	22.1	23.0	22.9	23.9	25.1
6H	18.5	19.4	19.4	20.4	21.6	24.6	25.5	25.5	26.4	27.6
8H	19.4	20.2	20.3	21.2	22.4	25.9	26.8	26.8	27.7	28.9
12H	20.2	21.1	21.2	22.0	23.2	27.3	28.1	28.2	29.1	30.3
4H 2H	14.1	15.0	15.0	16.0	17.1	15.8	16.8	16.7	17.7	18.9
3H	17.1	18.0	18.0	18.9	20.1	20.5	21.3	21.4	22.2	23.5
4H	18.8	19.6	19.7	20.5	21.7	23.1	23.9	24.1	24.8	26.1
6H	20.5	21.2	21.4	22.1	23.4	25.9	26.5	26.8	27.5	28.8
8H	21.3	22.0	22.3	23.0	24.2	27.3	27.9	28.2	28.9	30.2
12H	22.2	22.8	23.2	23.8	25.1	28.8	29.4	29.7	30.4	31.7
8H 4H	20.4	21.0	21.3	22.0	23.3	23.5	24.2	24.5	25.2	26.4
6H	22.3	22.8	23.2	23.8	25.1	26.5	27.1	27.5	28.1	29.4
8H	23.2	23.7	24.2	24.7	26.1	28.2	28.7	29.2	29.7	31.0
12H	24.3	24.7	25.3	25.7	27.1	30.0	30.4	31.0	31.4	32.7
12H 4H	21.0	21.6	21.9	22.6	23.8	23.6	24.2	24.5	25.2	26.4
6H	23.0	23.5	24.0	24.5	25.8	26.7	27.2	27.7	28.2	29.5
8H	24.1	24.6	25.1	25.6	26.9	28.4	28.8	29.4	29.9	31.2
Variations with the observer position at spacings:										
S = 1.0H	+ 0.1 / - 0.1					+ 0.1 / - 0.1				
1.5H	+ 0.2 / - 0.2					+ 0.2 / - 0.3				
2.0H	+ 0.3 / - 0.4					+ 0.3 / - 0.4				

CIE Pub.117, 1551 lm Total Lamp Luminous Flux Corrected (8log(F/F0) = 1.5)  
 Area: 0.06825 m2

C Range: 0 - 360DEG  
 C Interval: 15.0DEG  
 Test Speed: HIGH  
 Temperature: 25.0DEG  
 Operators: Alan Wang  
 Test Date: 08 May 2023

γ Range: 0 - 180DEG  
 γ Interval: 1.0DEG  
 Test System: EVERFINE GO-R5000\_V2 SYSTEM V2.00.416  
 Humidity: 42.1%  
 Test Distance: 2.500m [K=1.0390]  
 Remarks:

UTILIZATION FACTORS TABLE

Test:U:277.00V I:0.0826A P:19.340W PF:0.8448 Freq:60.00Hz Lamp Flux:1550.76x1 lm		
NAME:	TYPE:LED	WEIGHT:
SPEC.:	DIM.:	SERIAL No.:
MFR.: ASD Lighting corp	SUR.:	Shielding Angle:

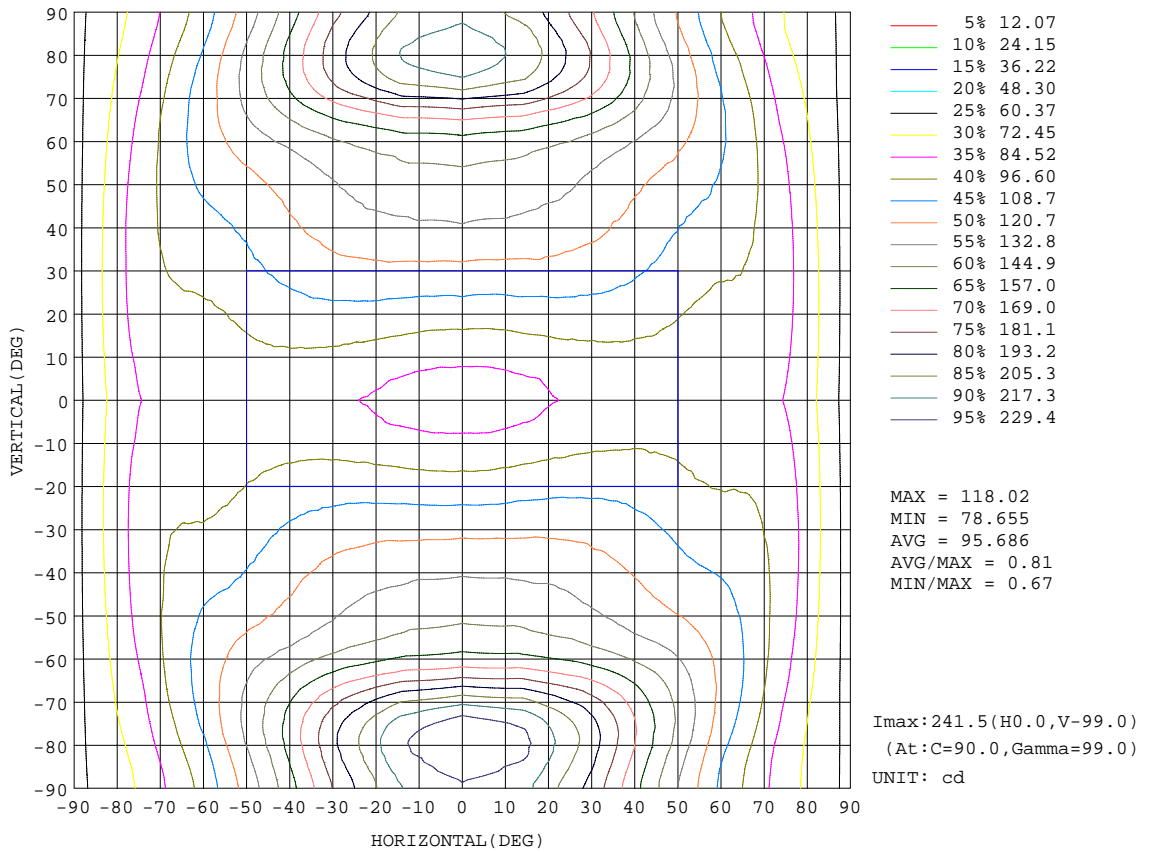
REFLECTANCE										
Ceiling	0.8	0.8	0.8	0.7	0.7	0.7	0.5	0.5	0.5	0
Walls	0.7	0.5	0.3	0.7	0.5	0.3	0.7	0.5	0.3	0
Working plane	0.2	0.2	0.2	0.2	0.2	0.2	0.2	0.2	0.2	0
ROOM INDEX	UTILIZATION FACTORS(PERCENT) $k(RI) \times RCR = 5$									
k = 0.60	36	23	16	34	22	15	31	20	14	7
0.80	44	30	22	42	29	21	37	26	19	10
1.00	51	37	28	48	35	26	42	33	24	12
1.25	58	44	34	54	41	32	47	36	29	15
1.50	63	49	39	59	46	37	51	40	33	18
2.00	71	58	48	66	54	45	56	47	40	22
2.50	76	64	54	71	60	51	60	51	44	25
3.00	80	69	60	74	64	56	63	55	49	27
4.00	86	76	68	79	70	63	67	60	55	31
5.00	89	81	73	82	75	68	70	64	59	34
ROOM INDEX	UF(total)									Direct
According to DIN EN 13032-2 2004			Suspended				SHRNOM = 1.25			

C Range: 0 - 360DEG  
 C Interval: 15.0DEG  
 Test Speed: HIGH  
 Temperature: 25.0DEG  
 Operators: Alan Wang  
 Test Date: 08 May 2023

$\gamma$  Range: 0 - 180DEG  
 $\gamma$  Interval: 1.0DEG  
 Test System: EVERFINE GO-R5000\_V2 SYSTEM V2.00.416  
 Humidity: 42.1%  
 Test Distance: 2.500m [K=1.0390]  
 Remarks:

ISOCANDELA DIAGRAM

Test:U:277.00V I:0.0826A P:19.340W PF:0.8448 Freq:60.00Hz Lamp Flux:1550.76x1 lm		
NAME:	TYPE:LED	WEIGHT:
SPEC.:	DIM.:	SERIAL No.:
MFR.: ASD Lighting corp	SUR.:	Shielding Angle:



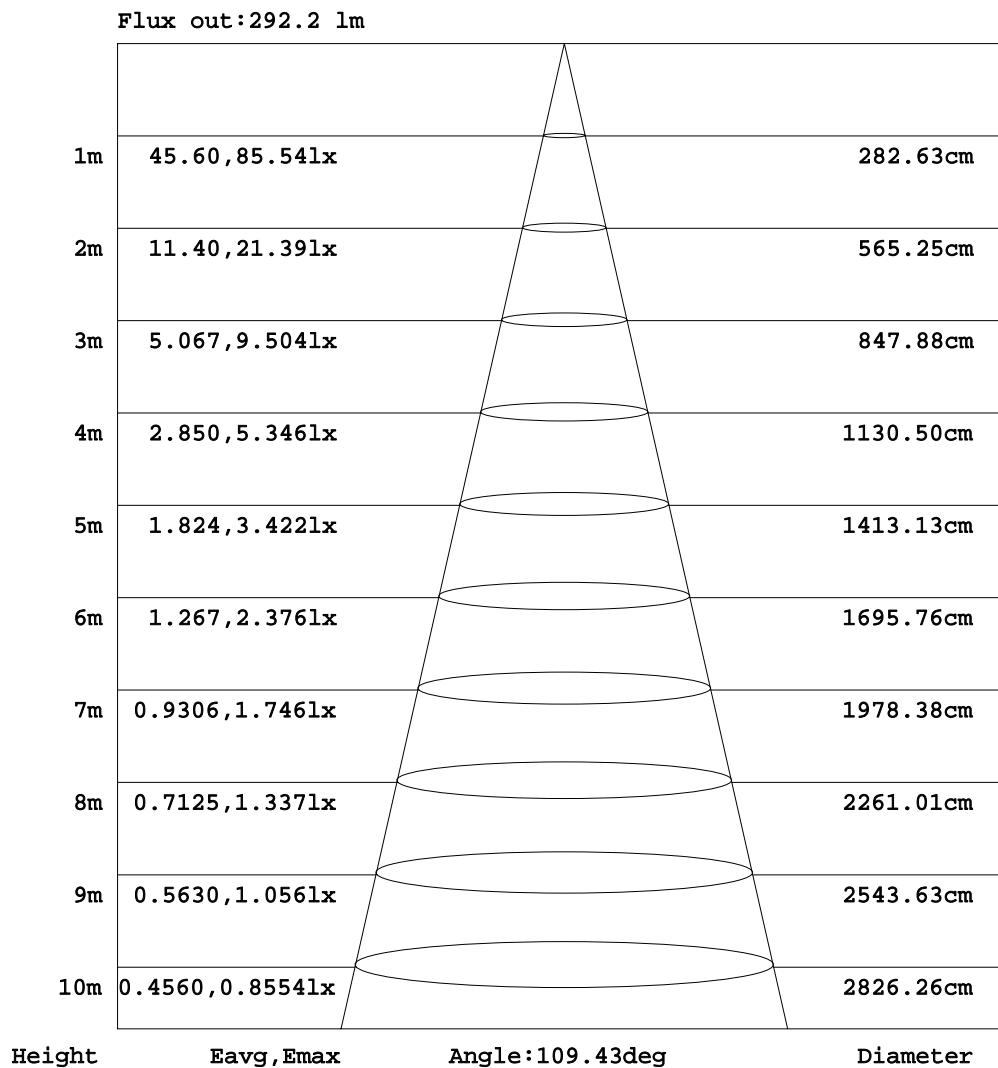
C Range: 0 - 360DEG  
 C Interval: 15.0DEG  
 Test Speed: HIGH  
 Temperature: 25.0DEG  
 Operators: Alan Wang  
 Test Date: 08 May 2023

γ Range: 0 - 180DEG  
 γ Interval: 1.0DEG  
 Test System: EVERFINE GO-R5000\_V2 SYSTEM V2.00.416  
 Humidity: 42.1%  
 Test Distance: 2.500m [K=1.0390]  
 Remarks:



AAI Figure

Test:U:277.00V I:0.0826A P:19.340W PF:0.8448 Freq:60.00Hz Lamp Flux:1550.76x1 lm		
NAME:	TYPE:LED	WEIGHT:
SPEC.:	DIM.:	SERIAL No.:
MFR.: ASD Lighting corp	SUR.:	Shielding Angle:



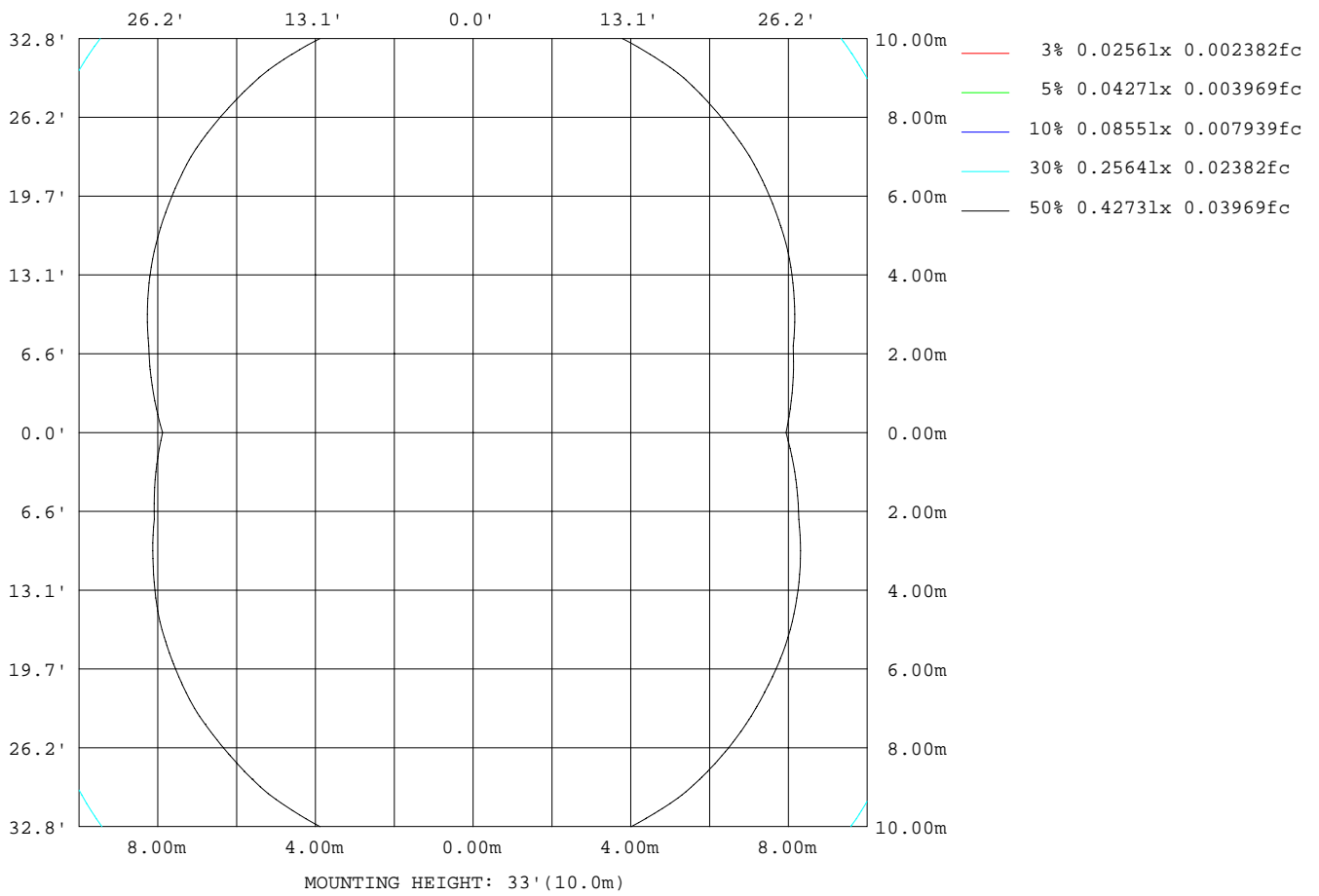
Note:The Curves indicate the illuminated area and the average illumination when the luminaire is at different distance.

C Range: 0 - 360DEG  
 C Interval: 15.0DEG  
 Test Speed: HIGH  
 Temperature: 25.0DEG  
 Operators:Alan Wang  
 Test Date:08 May 2023

γ Range: 0 - 180DEG  
 γ Interval: 1.0DEG  
 Test System:EVERFINE GO-R5000\_V2 SYSTEM V2.00.416  
 Humidity: 42.1%  
 Test Distance:2.500m [K=1.0390]  
 Remarks:

ISOLUX DIAGRAM

Test:U:277.00V I:0.0826A P:19.340W PF:0.8448 Freq:60.00Hz Lamp Flux:1550.76x1 lm		
NAME:	TYPE:LED	WEIGHT:
SPEC.:	DIM.:	SERIAL No.:
MFR.: ASD Lighting corp	SUR.:	Shielding Angle:



C Range: 0 - 360DEG  
 C Interval: 15.0DEG  
 Test Speed: HIGH  
 Temperature: 25.0DEG  
 Operators: Alan Wang  
 Test Date: 08 May 2023

$\gamma$  Range: 0 - 180DEG  
 $\gamma$  Interval: 1.0DEG  
 Test System: EVERFINE GO-R5000\_V2 SYSTEM V2.00.416  
 Humidity: 42.1%  
 Test Distance: 2.500m [K=1.0390]  
 Remarks:

## LED Avg.L Report

Test:U:277.00V I:0.0826A P:19.340W PF:0.8448 Freq:60.00Hz Lamp Flux:1550.76x1 lm		
NAME:	TYPE:LED	WEIGHT:
SPEC.:	DIM.:	SERIAL No.:
MFR.: ASD Lighting corp	SUR.:	Shielding Angle:

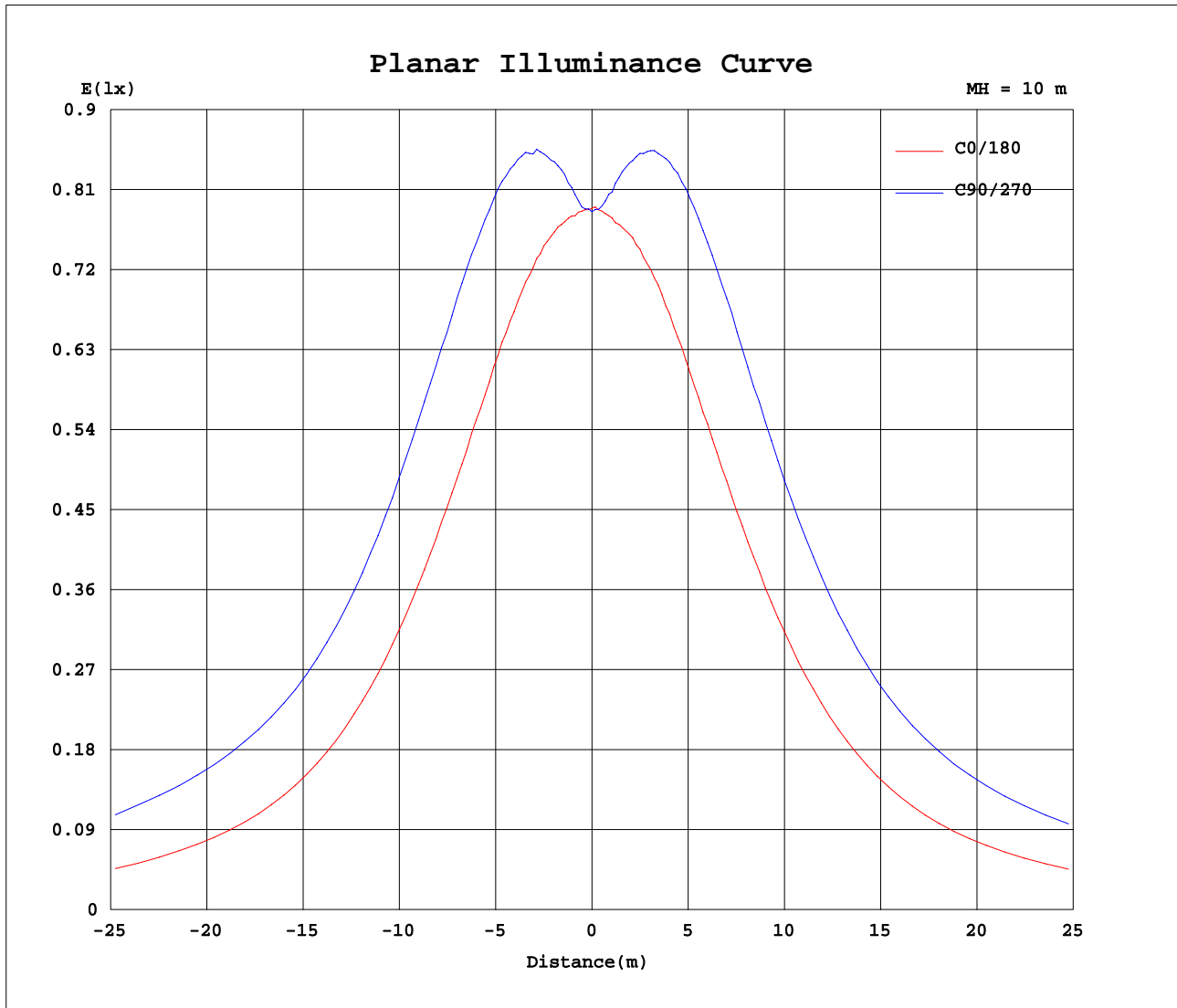
AvgL	cd/m2
L_0~180(65)av	3013
L_0~180(75)av	4749
L_0~180(85)av	11177
L_90~270(65)av	6137
L_90~270(75)av	12837
L_90~270(85)av	38430
L_45(65)av	4575
L_45(75)av	8413
L_45(85)av	24346

Standard: GB/T 29293-2012

C Range: 0 - 360DEG  
C Interval: 15.0DEG  
Test Speed: HIGH  
Temperature: 25.0DEG  
Operators: Alan Wang  
Test Date: 08 May 2023

$\gamma$  Range: 0 - 180DEG  
 $\gamma$  Interval: 1.0DEG  
Test System: EVERFINE GO-R5000\_V2 SYSTEM V2.00.416  
Humidity: 42.1%  
Test Distance: 2.500m [K=1.0390]  
Remarks:

Planar Illuminance Curve



C Range: 0 - 360DEG  
 C Interval: 15.0DEG  
 Test Speed: HIGH  
 Temperature: 25.0DEG  
 Operators: Alan Wang  
 Test Date: 08 May 2023

γ Range: 0 - 180DEG  
 γ Interval: 1.0DEG  
 Test System: EVERFINE GO-R5000\_V2 SYSTEM V2.00.416  
 Humidity: 42.1%  
 Test Distance: 2.500m [K=1.0390]  
 Remarks:

LUMINOUS DISTRIBUTION INTENSITY DATA

Test:U:277.00V I:0.0826A P:19.340W PF:0.8448 Freq:60.00Hz Lamp Flux:1550.76x1 lm		
NAME:	TYPE:LED	WEIGHT:
SPEC.:	DIM.:	SERIAL No.:
MFR.: ASD Lighting corp	SUR.:	Shielding Angle:

Table--1

UNIT: cd

C(DEG) γ (DEG)	0	15	30	45	60	75	90	105	120	135	150	165	180	195	210	225	240	255	270
0	78.9	78.9	79.0	78.8	78.9	78.6	78.5	78.9	78.9	78.9	78.9	78.7	78.9	78.9	79.0	78.8	78.9	78.6	78.5
5	78.9	78.9	79.1	80.0	80.6	81.2	81.4	81.4	80.5	80.0	79.0	78.9	79.0	79.1	79.4	80.2	80.7	81.3	81.4
10	80.4	80.4	82.5	84.2	85.9	87.1	87.6	87.3	85.9	84.0	81.9	80.3	79.9	80.5	82.2	84.4	86.1	87.2	87.4
15	81.9	83.4	86.8	89.9	92.4	94.1	94.6	93.5	92.0	89.3	85.9	82.6	81.4	83.0	86.7	89.9	92.1	93.6	94.4
20	83.8	86.3	91.5	96.1	99.3	101	102	101	98.8	95.0	90.3	85.1	83.4	85.9	91.1	95.8	99.0	102	102
25	85.8	89.4	96.4	102	106	109	110	108	106	101	94.5	88.2	85.0	89.2	95.8	102	106	109	110
30	86.9	92.5	101	108	114	116	118	116	112	107	99.1	90.6	86.1	91.6	100	108	113	116	118
35	88.3	95.0	105	114	120	124	125	124	119	112	103	93.1	87.7	94.6	104	113	120	124	125
40	89.1	97.1	108	119	126	130	132	130	125	116	106	94.8	88.4	96.7	108	118	125	130	131
45	89.1	98.0	111	122	131	136	138	135	129	120	109	95.8	88.5	98.1	110	122	130	135	136
50	88.5	99.0	113	125	135	141	143	140	133	122	110	95.9	87.5	98.4	112	124	133	140	141
55	87.2	99.0	113	127	139	147	150	146	137	125	110	95.8	86.1	97.9	112	126	137	144	146
60	86.2	98.7	114	130	146	158	162	156	143	127	111	95.6	85.0	97.9	112	127	141	151	154
65	87.9	101	117	137	160	180	185	177	156	132	112	97.0	86.0	98.6	114	131	150	164	169
70	87.5	102	121	148	180	207	214	203	173	141	117	98.7	86.7	100	116	138	165	187	194
75	83.8	100	123	157	195	227	236	221	187	149	118	97.0	84.0	99.1	119	147	182	209	218
80	76.6	94.6	121	159	200	232	241	227	192	150	115	91.3	77.0	93.8	117	150	188	217	227
85	65.8	84.6	113	152	195	226	235	222	187	144	107	82.1	67.1	85.1	110	146	185	213	222
90	56.9	77.0	106	147	189	220	229	216	181	138	100	73.4	56.9	75.7	102	138	177	205	213
95	63.1	81.9	111	151	196	229	238	224	187	143	105	77.8	62.1	80.0	107	144	185	214	223
100	68.5	83.6	111	151	196	231	241	227	190	144	107	80.7	68.1	83.2	109	146	188	220	229
105	70.0	80.6	106	143	186	220	231	217	180	138	103	79.0	70.8	81.5	105	140	181	211	222
110	70.2	77.0	99.8	131	167	197	207	194	163	127	97.6	75.7	71.3	77.8	100	131	165	193	200
115	74.2	77.2	96.8	121	148	170	178	168	145	119	95.0	75.8	74.7	76.6	96.8	121	147	168	174
120	79.3	82.0	95.3	115	135	150	155	150	133	114	93.8	80.4	79.7	81.0	95.1	114	135	149	154
125	83.7	86.5	93.6	111	127	139	144	139	126	110	92.8	84.0	83.9	84.8	93.3	110	126	138	142
130	86.8	89.2	92.4	107	120	132	135	131	120	106	91.2	86.8	87.4	87.7	90.8	106	120	130	133
135	88.8	90.8	94.6	102	114	124	127	123	114	101	93.3	88.5	89.3	90.2	92.4	101	113	122	125
140	89.4	91.0	94.4	98.1	108	116	118	116	107	97.3	92.6	88.9	90.1	90.5	92.7	95.8	106	113	115
145	88.9	90.4	92.7	99.2	102	107	109	107	101	97.7	91.5	87.8	89.8	90.4	90.2	95.3	99.0	104	106
150	88.2	89.3	92.0	97.6	101	102	102	102	101	95.6	89.5	86.0	89.0	88.8	89.8	94.3	96.7	98.0	98.6
155	88.0	88.0	90.6	94.3	97.3	100	101	99.6	97.1	92.4	88.0	83.6	88.1	88.0	87.9	91.2	94.2	95.5	96.6
160	87.2	85.8	89.0	91.3	93.5	94.9	95.2	94.7	89.6	89.5	85.4	82.9	87.4	87.0	85.0	87.1	89.9	91.4	91.5
165	85.1	84.3	85.8	89.0	89.9	90.7	90.9	88.8	88.9	86.9	81.9	83.2	85.5	85.8	84.0	83.5	84.8	87.4	88.1
170	72.4	74.8	75.6	80.8	85.3	85.3	84.3	85.7	83.8	77.2	69.7	73.4	73.8	73.8	75.9	74.3	79.7	84.3	84.8
175	51.7	52.4	53.7	65.3	67.2	65.6	61.9	60.6	60.2	55.4	52.9	52.1	52.4	52.7	51.6	52.3	55.3	58.1	59.1
180	41.7	40.6	38.2	34.8	18.2	3.74	0.00	9.10	21.5	33.1	42.2	42.0	42.7	42.8	40.7	36.4	32.8	26.6	12.9

C Range: 0 - 360DEG  
 C Interval: 15.0DEG  
 Test Speed: HIGH  
 Temperature: 25.0DEG  
 Operators: Alan Wang  
 Test Date: 08 May 2023

γ Range: 0 - 180DEG  
 γ Interval: 1.0DEG  
 Test System: EVERFINE GO-R5000\_V2 SYSTEM V2.00.416  
 Humidity: 42.1%  
 Test Distance: 2.500m [K=1.0390]  
 Remarks:

LUMINOUS DISTRIBUTION INTENSITY DATA

Test:U:277.00V I:0.0826A P:19.340W PF:0.8448 Freq:60.00Hz Lamp Flux:1550.76x1 lm		
NAME:	TYPE:LED	WEIGHT:
SPEC.:	DIM.:	SERIAL No.:
MFR.: ASD Lighting corp	SUR.:	Shielding Angle:

Table--2

UNIT: cd

C(DEG) γ (DEG)	285	300	315	330	345														
0	78.9	78.9	78.9	78.9	78.7														
5	81.0	80.5	79.9	79.3	79.0														
10	87.0	85.7	84.0	81.9	80.5														
15	93.7	91.8	89.3	86.1	82.7														
20	101	98.5	95.2	90.4	85.3														
25	108	106	101	94.9	88.1														
30	116	112	106	99.1	91.2														
35	123	119	112	103	93.3														
40	129	124	116	106	95.2														
45	135	129	120	109	96.3														
50	139	132	122	110	96.6														
55	143	135	124	110	96.1														
60	149	139	125	111	96.1														
65	163	147	128	112	97.0														
70	185	161	135	113	97.7														
75	206	176	142	115	95.5														
80	213	181	143	112	89.5														
85	208	177	138	104	80.0														
90	201	170	131	96.6	71.7														
95	210	178	136	101	76.5														
100	214	179	137	102	78.6														
105	206	171	131	98.9	76.2														
110	187	157	122	93.6	72.5														
115	163	141	114	91.2	74.1														
120	146	129	110	90.1	79.0														
125	136	122	106	88.9	83.5														
130	128	117	102	88.1	86.4														
135	121	110	97.2	90.3	88.4														
140	112	104	93.7	90.5	89.1														
145	103	98.1	94.4	90.1	88.9														
150	97.3	96.5	93.7	89.8	88.4														
155	96.1	94.5	92.7	89.4	87.7														
160	92.9	92.5	91.1	87.6	85.0														
165	87.0	89.2	87.6	85.0	82.7														
170	84.4	81.4	84.1	77.0	75.1														
175	59.8	63.5	63.0	59.9	50.8														
180	10.1	14.5	29.9	35.3	38.4														

C Range: 0 - 360DEG  
 C Interval: 15.0DEG  
 Test Speed: HIGH  
 Temperature: 25.0DEG  
 Operators: Alan Wang  
 Test Date: 08 May 2023

γ Range: 0 - 180DEG  
 γ Interval: 1.0DEG  
 Test System: EVERFINE GO-R5000\_V2 SYSTEM V2.00.416  
 Humidity: 42.1%  
 Test Distance: 2.500m [K=1.0390]  
 Remarks: