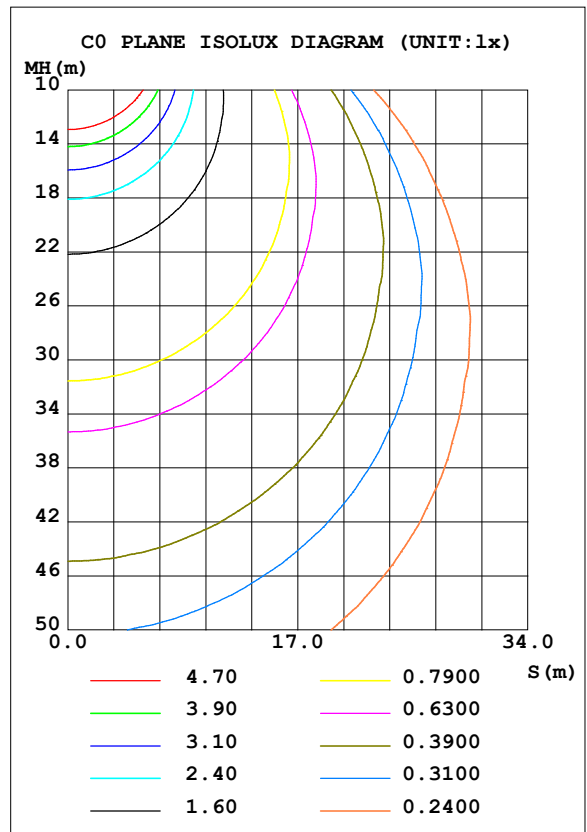
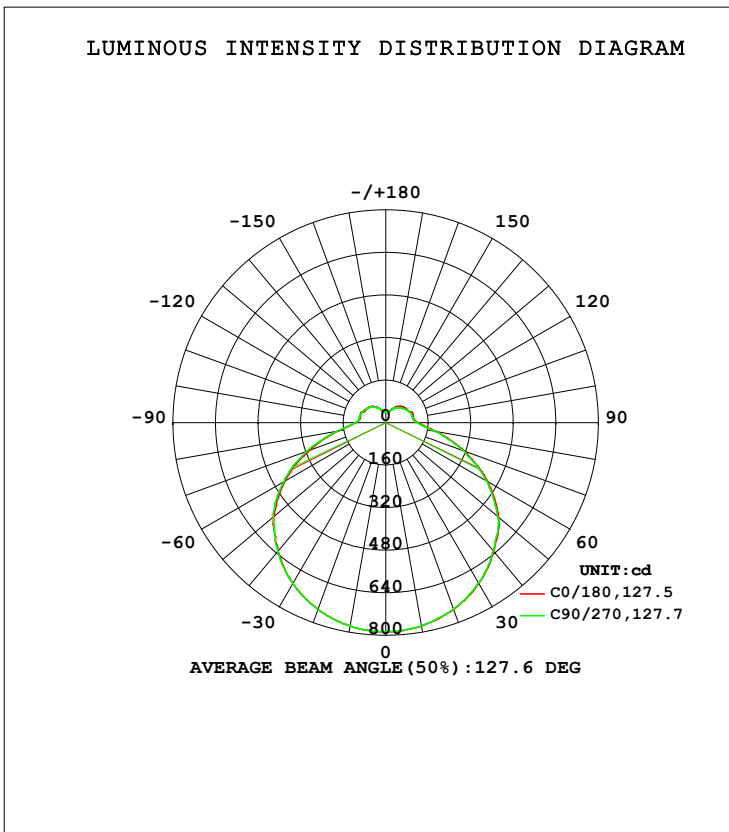


**LUMINAIRE PHOTOMETRIC TEST REPORT**

Test:U:120.04V I:0.3025A P:35.855W PF:0.9874 Freq:60.00Hz Lamp Flux:3282.07x1 lm		
NAME: ASD Lighting Corp	TYPE:ASD-LFC-GX-20D42S-RGB-SMARTLIGHT:	
SPEC.:ASD-LFC-GX-20D42S-RGB-SMART-3500K	DIM.:	SERIAL No.:
MFR.: ASD Lighting Corp	SUR.: -0.47	Shielding Angle:

DATA OF LAMP		PHOTOMETRIC DATA			
MODEL		Imax (cd)	786.9	S/MH (C0/180)	1.32
NOMINAL POWER (W)	--	LOR (%)	100.0	S/MH (C90/270)	1.33
RATED VOLTAGE (V)	--	TOTAL FLUX (lm)	3282.1	<input type="checkbox"/> UP, DN (C0-180)	8.3, 41.7
NOMINAL FLUX (lm)	3282.07	CIE CLASS	SEMI-D.	<input type="checkbox"/> UP, DN (C180-360)	8.3, 41.8
LAMPS INSIDE	1	<input type="checkbox"/> up (%)	16.6	CIBSE SHR NOM	1.50
TEST VOLTAGE (V)	--	<input type="checkbox"/> down (%)	83.4	CIBSE SHR MAX	1.55



C Range: 0 - 360DEG  
 C Interval: 22.5DEG  
 Test Speed: HIGH  
 Temperature: 25.3DEG  
 Operators: chen  
 Test Date: 2022-10-04

Range: 0 - 180DEG  
 Interval: 1.0DEG  
 Test System: EVERFINE GO-3000H\_V1 SYSTEM V2.00.411  
 Humidity: 65.0%  
 Test Distance: 8.650m [K=1.0000]  
 Remarks:

**ZONAL FLUX DIAGRAM**

ZONAL FLUX DIAGRAM:

mm	C0	C45	C90	C135	C180	C225	C270	C315	mm	□ zone	□ total	%lum,lamp
10	776.0	775.6	775.6	776.9	776.3	777.0	776.9	778.2	0- 10	74.60	74.60	2.27,2.27
20	746.6	745.7	745.7	746.4	746.9	747.0	748.4	748.0	10- 20	215.9	290.5	8.85,8.85
30	699.2	698.0	696.6	698.2	698.2	698.8	699.7	702.1	20- 30	334.6	625.1	19,19
40	632.4	630.3	628.5	627.1	630.8	632.2	631.7	633.8	30- 40	417.8	1043	31.8,31.8
50	554.2	553.3	548.6	547.4	549.8	551.6	553.7	556.5	40- 50	458.4	1501	45.7,45.7
60	443.8	437.2	436.7	435.5	437.1	441.1	442.9	444.7	50- 60	445.1	1946	59.3,59.3
70	315.1	311.1	311.4	306.6	305.6	312.8	316.4	313.5	60- 70	373.5	2320	70.7,70.7
80	191.1	189.8	184.6	183.2	181.5	184.6	185.0	189.8	70- 80	261.1	2581	78.6,78.6
90	121.2	120.5	117.0	115.1	112.9	113.5	115.7	118.8	80- 90	157.1	2738	83.4,83.4
100	105.6	103.3	102.6	99.96	99.41	98.64	102.5	102.7	90-100	116.7	2855	87,87
110	107.3	99.05	101.6	95.90	101.3	93.23	99.02	96.98	100-110	106.3	2961	90.2,90.2
120	95.18	91.36	93.61	90.04	90.95	89.97	94.84	91.14	110-120	95.28	3057	93.1,93.1
130	90.21	82.07	83.54	82.37	87.74	83.70	86.96	83.66	120-130	79.21	3136	95.5,95.5
140	80.80	68.58	74.14	70.64	80.19	71.56	77.96	69.65	130-140	61.64	3197	97.4,97.4
150	65.28	55.23	61.33	57.46	67.02	57.93	65.26	57.13	140-150	42.58	3240	98.7,98.7
160	49.52	46.36	48.11	47.76	50.92	49.11	52.37	48.62	150-160	25.54	3265	99.5,99.5
170	39.92	40.57	41.14	39.97	40.56	41.95	42.70	41.68	160-170	12.77	3278	99.9,99.9
180	41.11	38.41	40.92	40.05	41.11	38.37	40.84	40.05	170-180	3.820	3282	100,100
DEG	LUMINOUS INTENSITY:cd									UNIT:lm		

Conical surface Flux(90deg): 1269.5 lm

%lum = 38.7%

%lamp = 38.7%

Conical surface Flux(120deg): 1946.5 lm

%lum = 59.3%

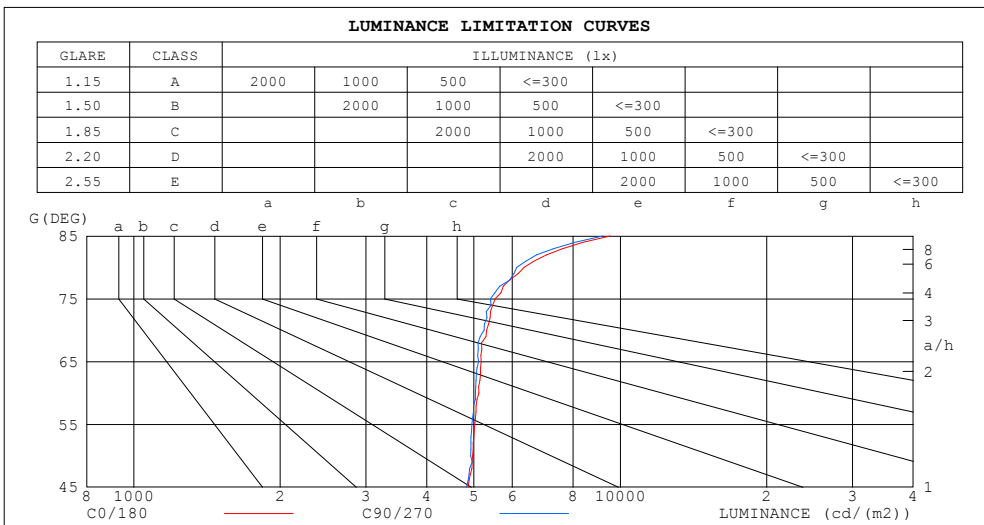
%lamp = 59.3%

C Range: 0 - 360DEG  
 C Interval: 22.5DEG  
 Test Speed: HIGH  
 Temperature:25.3DEG  
 Operators:chen  
 Test Date:2022-10-04

□ Range: 0 - 180DEG  
 □ Interval: 1.0DEG  
 Test System:EVERFINE GO-3000H\_V1 SYSTEM V2.00.411  
 Humidity:65.0%  
 Test Distance:8.650m [K=1.0000]  
 Remarks:

**LUMINANCE LIMITATION CURVES**

Test:U:120.04V I:0.3025A P:35.855W PF:0.9874 Freq:60.00Hz Lamp Flux:3282.07x1 lm		
NAME: ASD Lighting Corp	TYPE:ASD-LFC-GX-20D42S-RGB-SMARTIGHT:	
SPEC.:ASD-LFC-GX-20D42S-RGB-SMART-3500K	DIM.:	SERIAL No.:
MFR.: ASD Lighting Corp	SUR.: -0.47	Shielding Angle:



LUMINANCE cd/(m2)		
G (DEG)	C0/180	C90/270
85	9530	9205
80	6347	6130
75	5535	5412
70	5313	5250
65	5177	5112
60	5119	5036
55	5022	4954
50	4972	4922
45	4868	4831

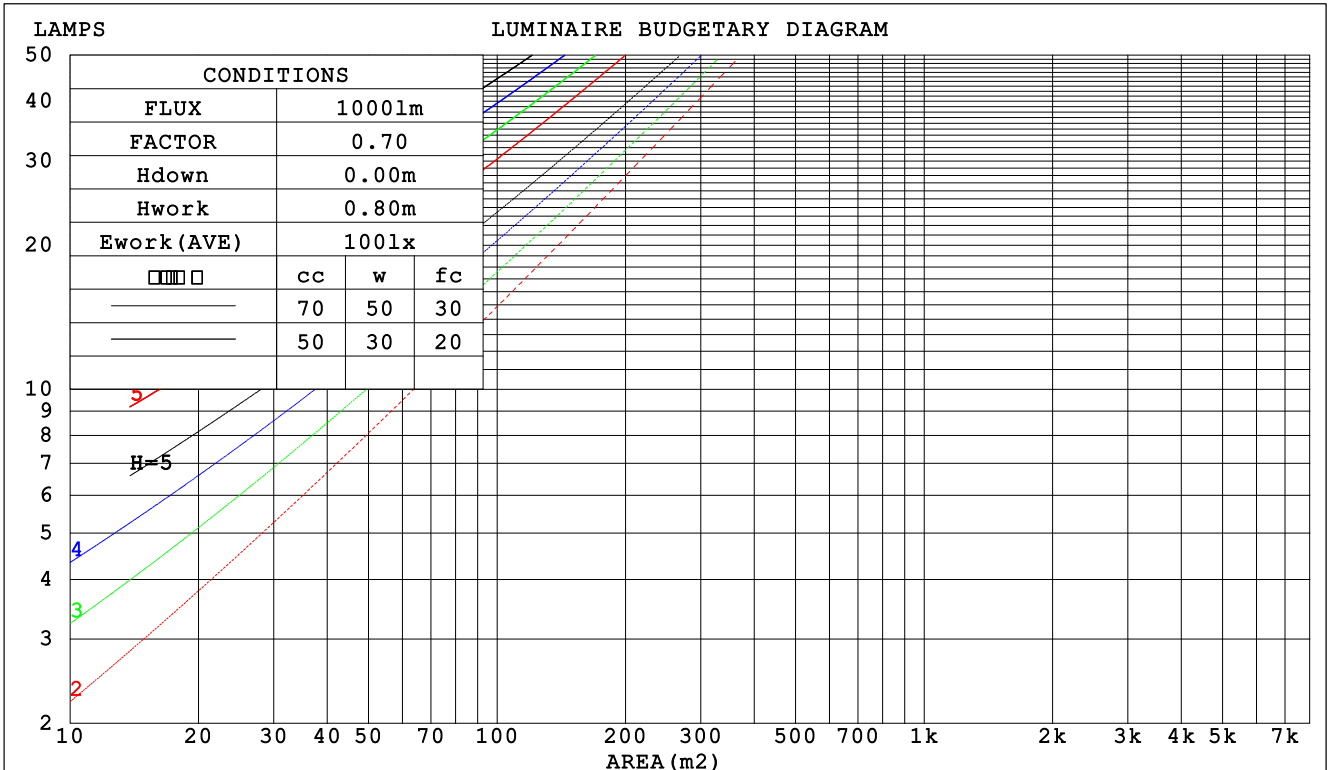
C Range: 0 - 360DEG  
 C Interval: 22.5DEG  
 Test Speed: HIGH  
 Temperature:25.3DEG  
 Operators:chen  
 Test Date:2022-10-04

Range: 0 - 180DEG  
 Interval: 1.0DEG  
 Test System:EVERFINE GO-3000H\_V1 SYSTEM V2.00.411  
 Humidity:65.0%  
 Test Distance:8.650m [K=1.0000]  
 Remarks:

CU AND LUMINAIRE BUDGETARY ESTIMATE DIAGRAM

Test:U:120.04V I:0.3025A P:35.855W PF:0.9874 Freq:60.00Hz Lamp Flux:3282.07x1 lm		
NAME: ASD Lighting Corp	TYPE:ASD-LFC-GX-20D42S-RGB-SMARTLIGHT:	
SPEC.:ASD-LFC-GX-20D42S-RGB-SMART-3500K	DIM.:	SERIAL No.:
MFR.: ASD Lighting Corp	SUR.: -0.47	Shielding Angle:

□cc	80%			70%			50%			30%			10%			0
□w	50%	30%	10%	50%	30%	10%	50%	30%	10%	50%	30%	10%	50%	30%	10%	0
□fc	20%			20%			20%			20%			20%			0
RCR	RCR:Room Cavity Ratio						Coefficients of Utilization(CU)									
0.0	1.15	1.15	1.15	1.10	1.10	1.10	1.02	1.02	1.02	.94	.94	.94	.87	.87	.87	.83
1.0	.98	.93	.89	.94	.90	.86	.87	.83	.80	.80	.77	.74	.74	.71	.69	.66
2.0	.84	.77	.71	.81	.74	.68	.75	.69	.64	.69	.64	.60	.63	.60	.57	.54
3.0	.73	.65	.58	.70	.63	.56	.65	.58	.53	.60	.55	.50	.55	.51	.47	.44
4.0	.64	.55	.48	.62	.54	.47	.57	.50	.45	.53	.47	.42	.49	.44	.40	.37
5.0	.57	.48	.41	.55	.47	.40	.51	.44	.38	.47	.41	.36	.44	.39	.34	.32
6.0	.51	.42	.36	.49	.41	.35	.46	.39	.33	.43	.36	.32	.40	.34	.30	.28
7.0	.46	.37	.31	.45	.36	.30	.42	.34	.29	.39	.32	.28	.36	.31	.26	.24
8.0	.42	.33	.28	.41	.33	.27	.38	.31	.26	.35	.29	.25	.33	.28	.24	.21
9.0	.38	.30	.25	.37	.29	.24	.35	.28	.23	.33	.26	.22	.30	.25	.21	.19
10.0	.35	.27	.22	.34	.27	.22	.32	.25	.21	.30	.24	.20	.28	.23	.19	.17



C Range: 0 - 360DEG  
 C Interval: 22.5DEG  
 Test Speed: HIGH  
 Temperature:25.3DEG  
 Operators:chen  
 Test Date:2022-10-04

□ Range: 0 - 180DEG  
 □ Interval: 1.0DEG  
 Test System:EVERFINE GO-3000H\_V1 SYSTEM V2.00.411  
 Humidity:65.0%  
 Test Distance:8.650m [K=1.0000]  
 Remarks:

**WEC AND CCEC**

Test:U:120.04V I:0.3025A P:35.855W PF:0.9874 Freq:60.00Hz Lamp Flux:3282.07x1 lm		
NAME: ASD Lighting Corp	TYPE:ASD-LFC-GX-20D42S-RGB-SMARTLIGHT:	
SPEC.:ASD-LFC-GX-20D42S-RGB-SMART-3500K	DIM.:	SERIAL No.:
MFR.: ASD Lighting Corp	SUR.: -0.47	Shielding Angle:

<input type="checkbox"/> cc	80%			70%			50%			30%			10%			0
<input type="checkbox"/> w	50%	30%	10%	50%	30%	10%	50%	30%	10%	50%	30%	10%	50%	30%	10%	0
<input type="checkbox"/> fc	20%			20%			20%			20%			20%			0
RCR	RCR:Room Cavity Ratio						Wall Exitance Coefficients (WEC)									
0.0																
1.0	.350	.199	.063	.337	.192	.061	.315	.180	.058	.294	.169	.054	.274	.159	.051	
2.0	.313	.172	.053	.302	.166	.051	.282	.157	.049	.263	.147	.046	.245	.139	.044	
3.0	.283	.151	.045	.273	.146	.044	.255	.138	.042	.237	.130	.040	.221	.123	.038	
4.0	.258	.134	.039	.249	.130	.038	.232	.123	.037	.216	.116	.035	.202	.109	.033	
5.0	.236	.120	.035	.228	.117	.034	.212	.111	.033	.198	.105	.031	.185	.099	.030	
6.0	.217	.109	.031	.210	.106	.031	.196	.100	.029	.183	.095	.028	.171	.090	.027	
7.0	.201	.099	.028	.194	.097	.028	.182	.092	.026	.170	.087	.025	.158	.082	.024	
8.0	.187	.091	.026	.181	.089	.025	.169	.085	.024	.158	.080	.023	.148	.076	.022	
9.0	.175	.085	.024	.169	.082	.023	.158	.078	.022	.148	.074	.021	.139	.070	.020	
10.0	.164	.079	.022	.159	.077	.021	.149	.073	.021	.139	.069	.020	.130	.066	.019	

<input type="checkbox"/> cc	80%			70%			50%			30%			10%			0
<input type="checkbox"/> w	50%	30%	10%	50%	30%	10%	50%	30%	10%	50%	30%	10%	50%	30%	10%	0
<input type="checkbox"/> fc	20%			20%			20%			20%			20%			0
RCR	RCR:Room Cavity Ratio						Ceiling Cavity Exitance Coefficients (CCEC)									
0.0	.317	.317	.317	.271	.271	.271	.185	.185	.185	.106	.106	.106	.034	.034	.034	
1.0	.310	.283	.259	.266	.243	.222	.182	.167	.154	.105	.097	.089	.033	.031	.029	
2.0	.303	.260	.224	.260	.224	.193	.178	.155	.135	.103	.090	.079	.033	.029	.026	
3.0	.296	.243	.201	.254	.210	.175	.174	.146	.122	.101	.085	.072	.032	.028	.024	
4.0	.288	.231	.186	.247	.199	.162	.170	.139	.114	.098	.081	.067	.032	.026	.022	
5.0	.281	.221	.176	.241	.191	.153	.166	.133	.108	.096	.078	.064	.031	.026	.021	
6.0	.274	.213	.169	.235	.184	.147	.162	.129	.104	.094	.076	.062	.030	.025	.020	
7.0	.267	.206	.163	.230	.179	.142	.159	.125	.101	.092	.074	.060	.030	.024	.020	
8.0	.260	.200	.159	.224	.174	.139	.155	.122	.099	.090	.072	.059	.029	.024	.019	
9.0	.254	.196	.156	.219	.170	.136	.152	.119	.097	.088	.071	.058	.029	.023	.019	
10.0	.248	.192	.154	.214	.166	.134	.149	.117	.095	.087	.069	.057	.028	.023	.019	

C Range: 0 - 360DEG  
 C Interval: 22.5DEG  
 Test Speed: HIGH  
 Temperature:25.3DEG  
 Operators:chen  
 Test Date:2022-10-04

Range: 0 - 180DEG  
 Interval: 1.0DEG  
 Test System:EVERFINE GO-3000H\_V1 SYSTEM V2.00.411  
 Humidity:65.0%  
 Test Distance:8.650m [K=1.0000]  
 Remarks:

**UGR(Unified Glare Rating) Table**

Test:U:120.04V I:0.3025A P:35.855W PF:0.9874 Freq:60.00Hz Lamp Flux:3282.07x1 lm										
NAME: ASD Lighting Corp					TYPE:ASD-LFC-GX-20D42S-RGB-SMARTIGHT:					
SPEC.:ASD-LFC-GX-20D42S-RGB-SMART-3500K					DIM.:			SERIAL No.:		
MFR.: ASD Lighting Corp					SUR.: -0.47			Shielding Angle:		
ceiling/cavity	0.7	0.7	0.5	0.5	0.3	0.7	0.7	0.5	0.5	0.3
walls	0.5	0.3	0.5	0.3	0.3	0.5	0.3	0.5	0.3	0.3
working plane	0.2	0.2	0.2	0.2	0.2	0.2	0.2	0.2	0.2	0.2
Room dimensions	Viewed crosswise					Viewed endwise				
x = 2H y = 2H	17.6	19.0	18.1	19.5	20.0	17.6	18.9	18.1	19.4	20.0
3H	19.5	20.7	20.0	21.3	21.8	19.4	20.7	20.0	21.2	21.8
4H	20.4	21.6	20.9	22.1	22.7	20.3	21.5	20.8	22.0	22.6
6H	21.2	22.3	21.8	22.9	23.5	21.1	22.3	21.7	22.8	23.4
8H	21.7	22.7	22.2	23.3	23.9	21.5	22.6	22.1	23.2	23.8
12H	22.1	23.2	22.7	23.7	24.4	22.0	23.0	22.6	23.6	24.2
4H 2H	18.3	19.5	18.8	20.0	20.6	18.2	19.4	18.8	20.0	20.5
3H	20.3	21.4	20.9	21.9	22.6	20.3	21.3	20.9	21.9	22.5
4H	21.4	22.3	22.0	22.9	23.6	21.3	22.2	21.9	22.8	23.5
6H	22.4	23.2	23.0	23.8	24.6	22.3	23.1	22.9	23.8	24.5
8H	22.9	23.7	23.5	24.3	25.1	22.8	23.6	23.4	24.2	24.9
12H	23.5	24.2	24.1	24.9	25.6	23.3	24.1	24.0	24.7	25.5
8H 4H	21.7	22.5	22.4	23.2	23.9	21.7	22.5	22.3	23.1	23.8
6H	23.0	23.6	23.7	24.3	25.1	22.9	23.6	23.6	24.2	25.0
8H	23.7	24.3	24.4	24.9	25.7	23.6	24.1	24.3	24.8	25.6
12H	24.4	25.0	25.2	25.7	26.5	24.3	24.8	25.0	25.5	26.3
12H 4H	21.8	22.5	22.4	23.2	23.9	21.7	22.5	22.4	23.1	23.8
6H	23.1	23.7	23.8	24.4	25.2	23.1	23.6	23.7	24.3	25.1
8H	23.9	24.4	24.6	25.1	25.9	23.8	24.3	24.5	25.0	25.8
Variations with the observer position at spacings:										
S = 1.0H	+ 0.1 / - 0.1					+ 0.1 / - 0.1				
1.5H	+ 0.2 / - 0.3					+ 0.2 / - 0.3				
2.0H	+ 0.2 / - 0.3					+ 0.2 / - 0.3				

CIE Pub.117, 3282 lm Total Lamp Luminous Flux Corrected (8log(F/F0) = 4.1)  
 Area: 0.173406 m2

C Range: 0 - 360DEG  
 C Interval: 22.5DEG  
 Test Speed: HIGH  
 Temperature:25.3DEG  
 Operators:chen  
 Test Date:2022-10-04

Range: 0 - 180DEG  
 Interval: 1.0DEG  
 Test System:EVERFINE GO-3000H\_V1 SYSTEM V2.00.411  
 Humidity:65.0%  
 Test Distance:8.650m [K=1.0000]  
 Remarks:

**UTILIZATION FACTORS TABLE**

Test:U:120.04V I:0.3025A P:35.855W PF:0.9874 Freq:60.00Hz Lamp Flux:3282.07x1 lm		
NAME: ASD Lighting Corp	TYPE:ASD-LFC-GX-20D42S-RGB-SMARTLIGHT:	
SPEC.:ASD-LFC-GX-20D42S-RGB-SMART-3500K	DIM.:	SERIAL No.:
MFR.: ASD Lighting Corp	SUR.: -0.47	Shielding Angle:

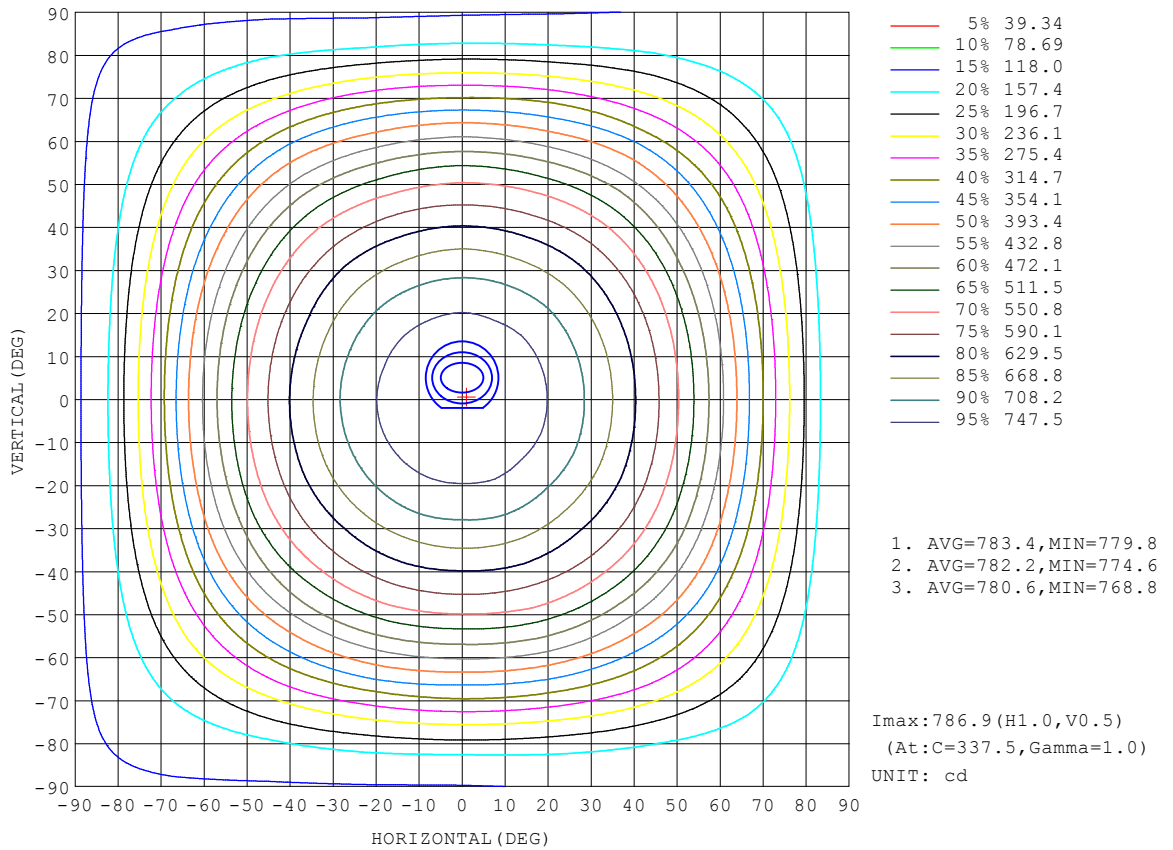
REFLECTANCE										
Ceiling	0.8	0.8	0.8	0.7	0.7	0.7	0.5	0.5	0.5	0
Walls	0.7	0.5	0.3	0.7	0.5	0.3	0.7	0.5	0.3	0
Working plane	0.2	0.2	0.2	0.2	0.2	0.2	0.2	0.2	0.2	0
ROOM INDEX	UTILIZATION FACTORS (PERCENT) $k(RI) \times RCR = 5$									
k = 0.60	50	37	30	48	37	30	46	36	30	23
0.80	59	47	39	57	46	38	55	44	37	30
1.00	67	55	47	65	54	46	62	54	45	36
1.25	74	62	54	72	61	53	68	58	52	42
1.50	79	68	60	77	66	59	72	63	57	46
2.00	87	76	69	84	74	67	78	70	64	53
2.50	91	82	74	88	79	73	81	75	69	57
3.00	95	86	79	91	83	77	85	78	73	60
4.00	99	92	86	95	89	84	88	83	79	65
5.00	102	96	91	98	92	88	91	86	82	68
ROOM INDEX	UF(total)									Direct
According to DIN EN 13032-2 2004			Suspended				SHRNOM = 1.25			

C Range: 0 - 360DEG  
 C Interval: 22.5DEG  
 Test Speed: HIGH  
 Temperature:25.3DEG  
 Operators:chen  
 Test Date:2022-10-04

Range: 0 - 180DEG  
 Interval: 1.0DEG  
 Test System:EVERFINE GO-3000H\_V1 SYSTEM V2.00.411  
 Humidity:65.0%  
 Test Distance:8.650m [K=1.0000]  
 Remarks:

**ISOCANDELA DIAGRAM**

Test:U:120.04V I:0.3025A P:35.855W PF:0.9874 Freq:60.00Hz Lamp Flux:3282.07x1 lm		
NAME: ASD Lighting Corp	TYPE:ASD-LFC-GX-20D42S-RGB-SMARTLIGHT:	
SPEC.:ASD-LFC-GX-20D42S-RGB-SMART-3500K	DIM.:	SERIAL No.:
MFR.: ASD Lighting Corp	SUR.: -0.47	Shielding Angle:



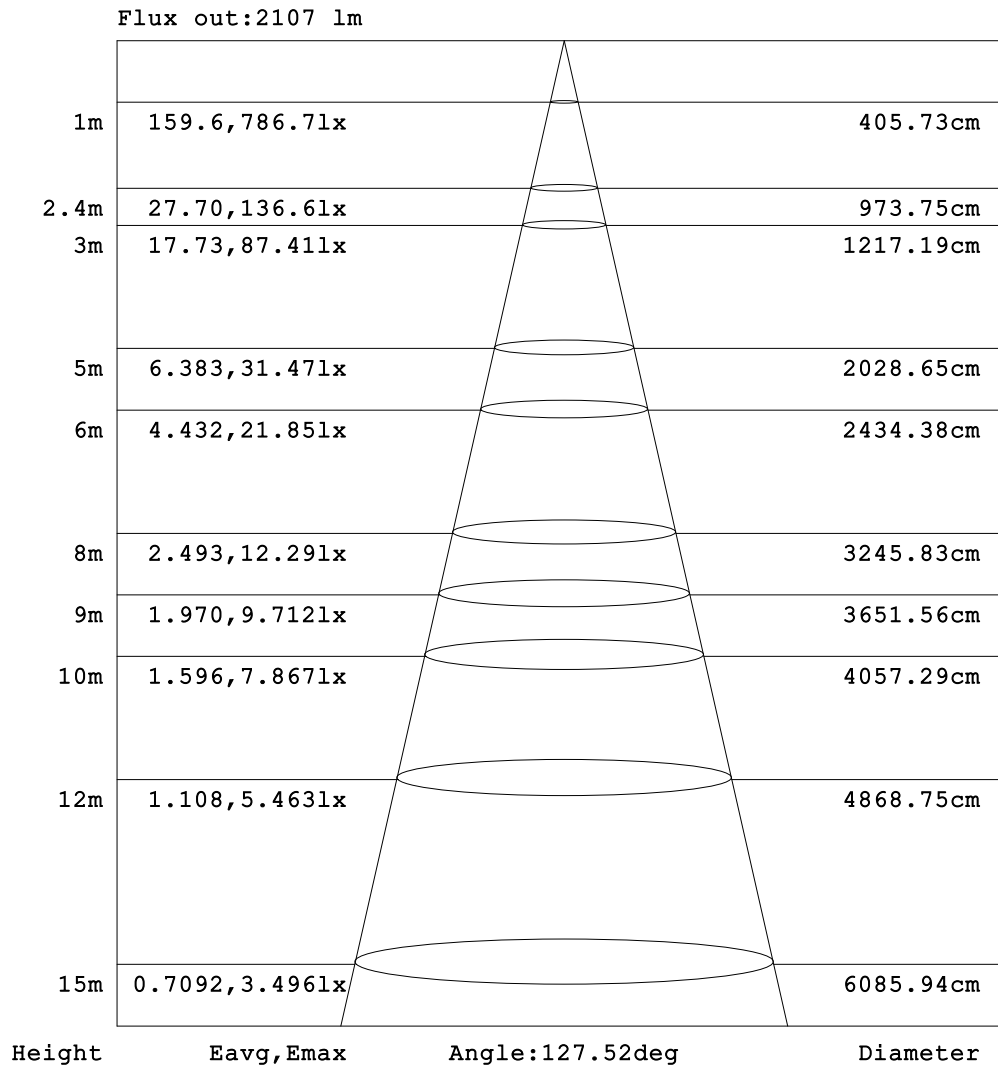
C Range: 0 - 360DEG  
 C Interval: 22.5DEG  
 Test Speed: HIGH  
 Temperature:25.3DEG  
 Operators:chen  
 Test Date:2022-10-04

Range: 0 - 180DEG  
 Interval: 1.0DEG  
 Test System:EVERFINE GO-3000H\_V1 SYSTEM V2.00.411  
 Humidity:65.0%  
 Test Distance:8.650m [K=1.0000]  
 Remarks:



**AAI Figure**

Test:U:120.04V I:0.3025A P:35.855W PF:0.9874 Freq:60.00Hz Lamp Flux:3282.07x1 lm		
NAME: ASD Lighting Corp	TYPE:ASD-LFC-GX-20D42S-RGB-SMARTIGHT:	
SPEC.:ASD-LFC-GX-20D42S-RGB-SMART-3500K	DIM.:	SERIAL No.:
MFR.: ASD Lighting Corp	SUR.: -0.47	Shielding Angle:



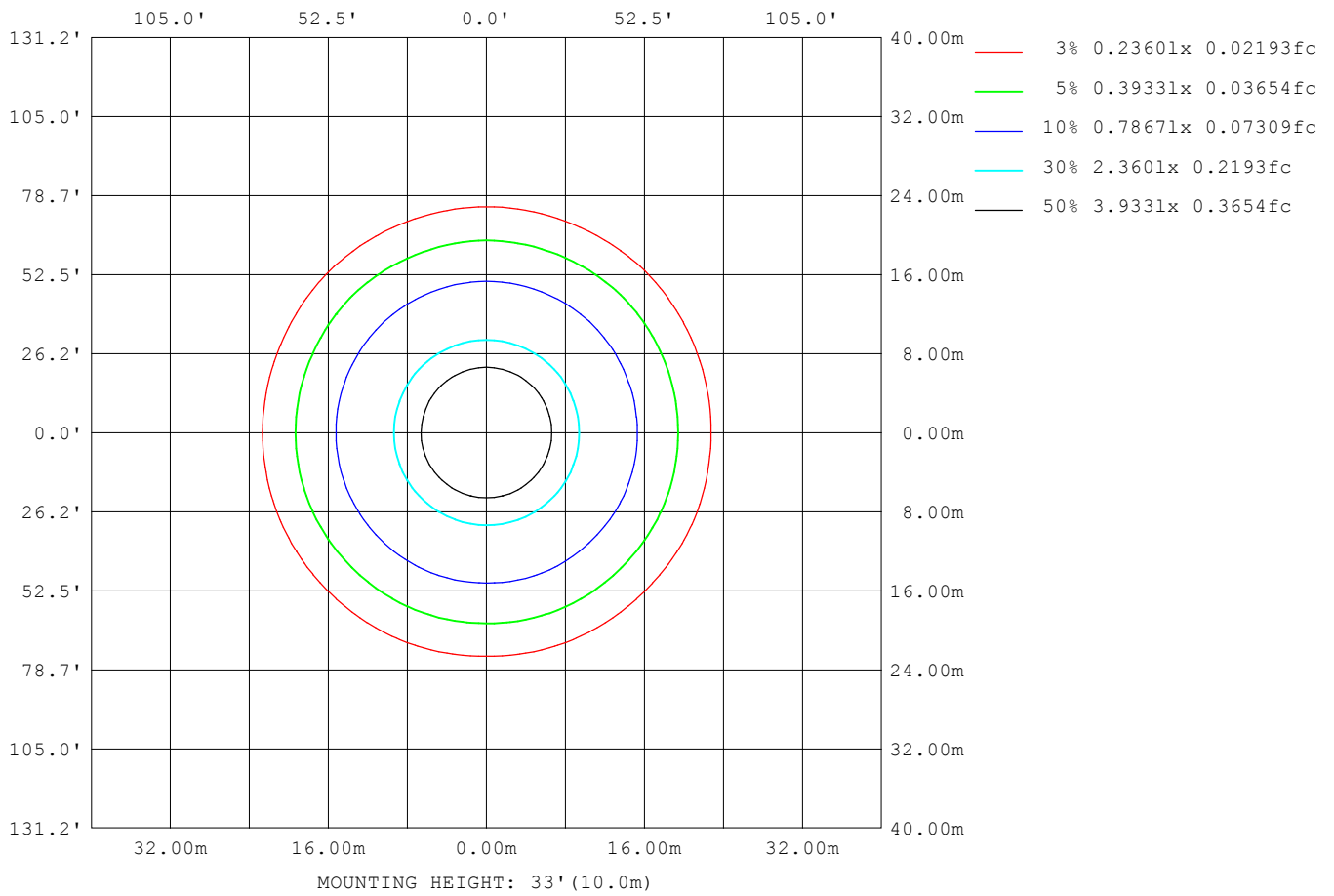
Note:The Curves indicate the illuminated area and the average illumination when the luminaire is at different distance.

C Range: 0 - 360DEG  
 C Interval: 22.5DEG  
 Test Speed: HIGH  
 Temperature:25.3DEG  
 Operators:chen  
 Test Date:2022-10-04

Range: 0 - 180DEG  
 Interval: 1.0DEG  
 Test System:EVERFINE GO-3000H\_V1 SYSTEM V2.00.411  
 Humidity:65.0%  
 Test Distance:8.650m [K=1.0000]  
 Remarks:

**ISOLUX DIAGRAM**

Test:U:120.04V I:0.3025A P:35.855W PF:0.9874 Freq:60.00Hz Lamp Flux:3282.07x1 lm		
NAME: ASD Lighting Corp	TYPE:ASD-LFC-GX-20D42S-RGB-SMARTIGHT:	
SPEC.:ASD-LFC-GX-20D42S-RGB-SMART-3500K	DIM.:	SERIAL No.:
MFR.: ASD Lighting Corp	SUR.: -0.47	Shielding Angle:



C Range: 0 - 360DEG  
 C Interval: 22.5DEG  
 Test Speed: HIGH  
 Temperature:25.3DEG  
 Operators:chen  
 Test Date:2022-10-04

Range: 0 - 180DEG  
 Interval: 1.0DEG  
 Test System:EVERFINE GO-3000H\_V1 SYSTEM V2.00.411  
 Humidity:65.0%  
 Test Distance:8.650m [K=1.0000]  
 Remarks:

**LED Avg.L Report**

Test:U:120.04V I:0.3025A P:35.855W PF:0.9874 Freq:60.00Hz Lamp Flux:3282.07x1 lm		
NAME: ASD Lighting Corp	TYPE:ASD-LFC-GX-20D42S-RGB-SMARTLIGHT:	
SPEC.:ASD-LFC-GX-20D42S-RGB-SMART-3500K	DIM.:	SERIAL No.:
MFR.: ASD Lighting Corp	SUR.: -0.47	Shielding Angle:

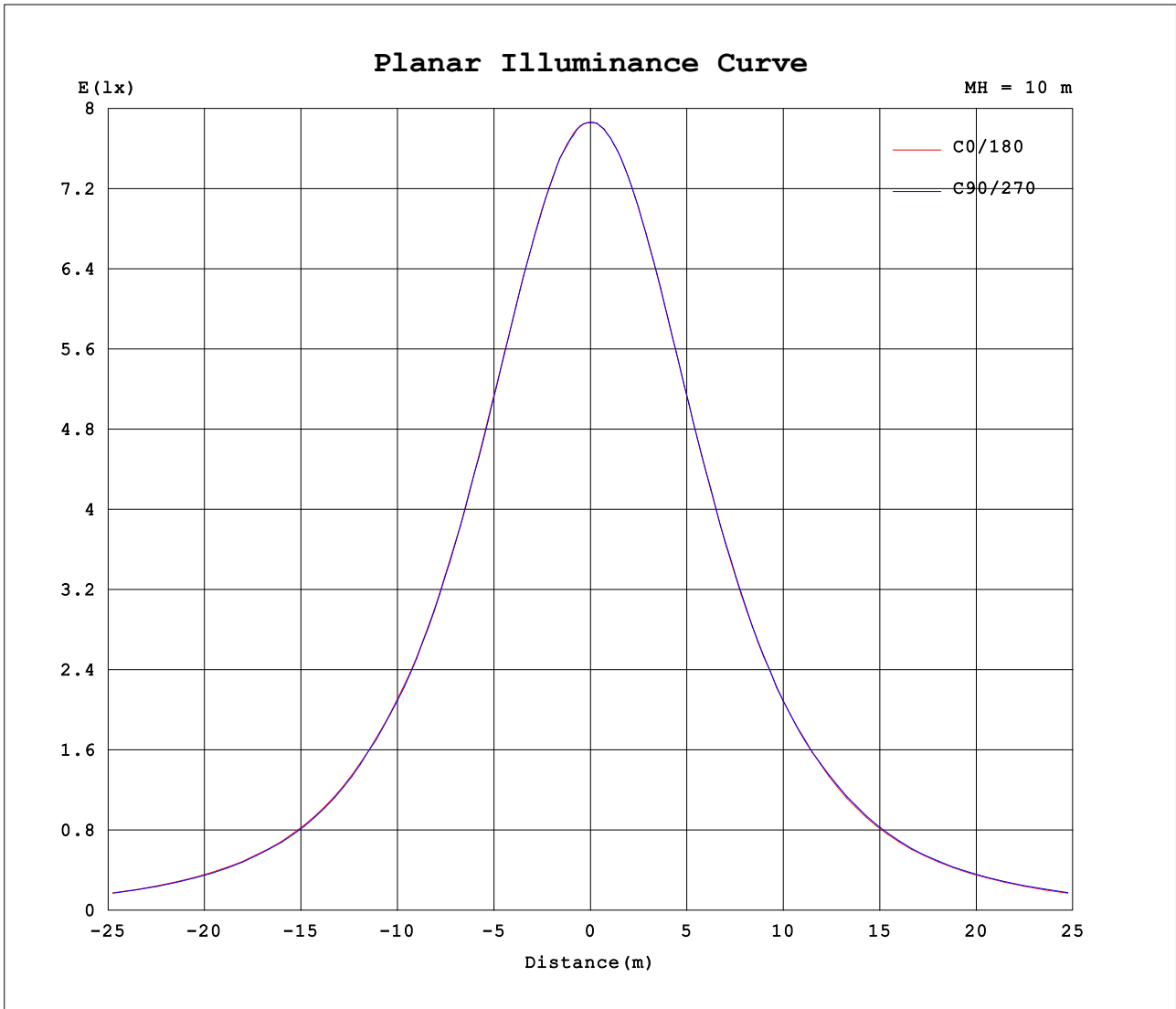
AvgL	cd/m2
L_0~180 (65) av	5155
L_0~180 (75) av	5446
L_0~180 (85) av	9254
L_90~270 (65) av	5176
L_90~270 (75) av	5462
L_90~270 (85) av	9237
L_45 (65) av	5170
L_45 (75) av	5489
L_45 (85) av	9293

Standard: GB/T 29293-2012

C Range: 0 - 360DEG  
 C Interval: 22.5DEG  
 Test Speed: HIGH  
 Temperature:25.3DEG  
 Operators:chen  
 Test Date:2022-10-04

Range: 0 - 180DEG  
 Interval: 1.0DEG  
 Test System:EVERFINE GO-3000H\_V1 SYSTEM V2.00.411  
 Humidity:65.0%  
 Test Distance:8.650m [K=1.0000]  
 Remarks:

Planar Illuminance Curve



C Range: 0 - 360DEG  
 C Interval: 22.5DEG  
 Test Speed: HIGH  
 Temperature:25.3DEG  
 Operators:chen  
 Test Date:2022-10-04

Range: 0 - 180DEG  
 Interval: 1.0DEG  
 Test System:EVERFINE GO-3000H\_V1 SYSTEM V2.00.411  
 Humidity:65.0%  
 Test Distance:8.650m [K=1.0000]  
 Remarks:

LUMINOUS DISTRIBUTION INTENSITY DATA

Test:U:120.04V I:0.3025A P:35.855W PF:0.9874 Freq:60.00Hz Lamp Flux:3282.07x1 lm		
NAME: ASD Lighting Corp	TYPE:ASD-LFC-GX-20D42S-RGB-SMARTIGHT:	
SPEC.:ASD-LFC-GX-20D42S-RGB-SMART-3500K	DIM.:	SERIAL No.:
MFR.: ASD Lighting Corp	SUR.: -0.47	Shielding Angle:

Table--1

UNIT: cd

C (DEG) □ (DEG)	0	22.5	45	67.5	90	112.5	135	157.5	180	202.5	225	247.5	270	292.5	315	337.5			
0	787	787	787	786	786	786	787	787	787	787	787	786	786	786	787	787			
5	784	783	784	784	783	784	784	784	784	784	784	784	784	785	785	784			
10	776	777	776	775	776	776	777	777	776	776	777	777	777	777	778	776			
15	764	764	764	763	762	763	763	763	764	763	765	764	764	764	764	764			
20	747	747	746	748	746	747	746	747	747	746	747	747	748	746	748	747			
25	725	726	725	727	724	725	724	725	725	724	726	724	726	726	727	726			
30	699	702	698	699	697	698	698	698	698	697	699	698	700	698	702	700			
35	669	669	666	668	666	665	666	667	666	665	667	666	669	667	669	669			
40	632	634	630	633	628	629	627	631	631	628	632	630	632	631	634	633			
45	597	604	597	595	592	592	590	591	591	590	591	591	592	592	595	598			
50	554	555	553	556	549	551	547	551	550	549	552	549	554	554	557	556			
55	500	503	498	499	493	495	492	495	495	493	496	500	502	500	502	499			
60	444	444	437	441	437	437	435	439	437	436	441	439	443	444	445	443			
65	379	382	374	377	375	374	377	375	376	376	378	380	384	385	385	381			
70	315	311	311	311	311	305	307	306	306	307	313	314	316	321	314	316			
75	248	252	250	244	243	242	241	243	240	245	244	245	247	248	250	252			
80	191	192	190	188	185	185	183	183	182	184	185	183	185	187	190	190			
85	144	145	142	142	139	140	137	137	136	135	138	137	140	141	144	143			
90	121	122	120	119	117	116	115	115	113	112	113	113	116	117	119	119			
95	110	110	108	108	106	105	104	104	103	102	102	102	104	105	107	108			
100	106	105	103	103	103	102	100.0	100	99.4	98.1	98.6	100	102	103	103	103			
105	105	104	101	102	102	99.4	97.4	99.7	99.5	97.0	95.6	98.1	101	101	99.2	101			
110	107	105	99.0	100	102	98.1	95.9	101	101	99.3	93.2	94.7	99.0	99.0	97.0	104			
115	99.4	101	95.2	97.0	97.8	92.4	93.1	96.4	94.7	95.3	92.3	92.3	96.6	96.7	94.1	99.9			
120	95.2	93.6	91.4	92.7	93.6	88.4	90.0	91.3	90.9	90.1	90.0	89.7	94.8	92.7	91.1	93.7			
125	93.1	88.8	87.5	86.6	88.9	85.3	86.4	87.9	89.9	86.9	87.4	87.3	90.9	88.7	88.7	88.8			
130	90.2	84.6	82.1	81.4	83.5	81.4	82.4	84.9	87.7	84.0	83.7	83.8	87.0	84.3	83.7	84.9			
135	86.1	80.0	75.2	76.7	79.3	76.0	77.1	81.6	84.5	80.6	78.1	79.5	82.5	80.8	76.7	80.6			
140	80.8	75.2	68.6	67.8	74.1	67.6	70.6	76.8	80.2	76.7	71.6	71.4	78.0	74.3	69.7	75.8			
145	74.2	69.5	62.4	63.3	68.4	63.4	64.5	71.4	74.3	70.9	64.8	64.7	72.1	66.3	64.0	69.9			
150	65.3	61.6	55.2	57.0	61.3	56.8	57.5	64.0	67.0	64.1	57.9	59.3	65.3	60.5	57.1	61.7			
155	57.0	54.5	50.2	52.0	54.4	51.6	52.6	56.5	59.2	57.7	53.2	55.0	58.9	55.3	53.0	55.2			
160	49.5	48.6	46.4	47.1	48.1	46.7	47.8	50.5	50.9	51.3	49.1	50.7	52.4	49.8	48.6	49.8			
165	43.4	43.9	42.7	42.5	43.2	43.4	43.3	44.5	44.9	45.0	45.8	46.0	46.7	44.6	44.2	45.3			
170	39.9	40.6	40.6	39.8	41.1	40.7	40.0	40.1	40.6	40.3	41.9	43.1	42.7	41.3	41.7	41.7			
175	40.2	39.5	37.8	37.9	40.0	39.9	38.8	39.3	40.4	38.2	38.3	40.4	41.6	40.4	40.1	40.6			
180	41.1	39.2	38.4	38.8	40.9	39.8	40.0	40.2	41.1	39.2	38.4	38.7	40.8	39.8	40.1	40.2			

C Range: 0 - 360DEG  
 C Interval: 22.5DEG  
 Test Speed: HIGH  
 Temperature:25.3DEG  
 Operators:chen  
 Test Date:2022-10-04

□ Range: 0 - 180DEG  
 □ Interval: 1.0DEG  
 Test System:EVERFINE GO-3000H\_V1 SYSTEM V2.00.411  
 Humidity:65.0%  
 Test Distance:8.650m [K=1.0000]  
 Remarks: