



LED DOWNLIGHT RETROFIT KIT

► **DESIGN** - LED DOWNLIGHT RETROFIT KIT with classic, low-profile design allows you to have a stylish look with efficient lighting. The preinstalled TP24 and E26 connectors and spring-loaded clips make your installation quick and easy. The acrylic lens with up to 105° beam angle and CRI90+ grants you even light. It is designed to operate on 120V circuits.

► **COLOR SELECTABLE** - You can choose either a 2,700K soft white, 3,000K warm white, 3,500K neutral white, 4,000K cool white, or 5,000K daylight color temperature.

► **DIMMING** - Smooth triac dimming capabilities ranging from 10% to 100% with modern LED dimmers allow you to control the look and feel of your space.

► **APPLICATION** - This fixture is suitable for most new construction, remodeling, and shallow recessed lighting housings. It is also Wet Locations rated, making it perfect for kitchen, bathroom or any other common areas.

► **ADVANTAGES** - With a lifespan of 50,000 hours, these fixtures are made to last decades under normal operation! ASD provides a 5-year limited warranty along with UL and ETL certification to guarantee top quality products and safety!

Catalog number	
Notes	
Type	



Finish: White Bronze Black

Model	Size	Watts	Voltage	Dimmable	Lumens	CCT	IC rated	Finish	Dimensions
LRKR ROUND									
ASD-LRKR-4D9AC-WH	4 inch	8.6W	120 V	TRIAC	674/684/688/702/696 lm	5CCT (2,700/3,000/3,500/4,000/5,000 K)	-	White	5-1/16" x 2"
ASD-LRKR-4D9AC-WH-6PACK	4 inch	8.6W	120 V	TRIAC	674/684/688/702/696 lm	5CCT (2,700/3,000/3,500/4,000/5,000 K)	-	White	5-1/16" x 2"
ASD-LRKR-4D9AC-WH-12PACK	4 inch	8.6W	120 V	TRIAC	674/684/688/702/696 lm	5CCT (2,700/3,000/3,500/4,000/5,000 K)	-	White	5-1/16" x 2"
ASD-LRKR-4D9AC-BZ-6PACK	4 inch	8.6W	120 V	TRIAC	674/684/688/702/696 lm	5CCT (2,700/3,000/3,500/4,000/5,000 K)	-	Bronze	5-1/16" x 2"
ASD-LRKR-4D9AC-BK-6PACK	4 inch	8.6W	120 V	TRIAC	674/684/688/702/696 lm	5CCT (2,700/3,000/3,500/4,000/5,000 K)	-	Black	5-1/16" x 2"
ASD-LRKR-6D12AC-WH-6PACK	5 and 6 inch	12W	120 V	TRIAC	962/971/992/1,009/996 lm	5CCT (2,700/3,000/3,500/4,000/5,000 K)	-	White	7-5/16" x 3-7/16"
ASD-LRKR-6D12AC-WH-12PACK	5 and 6 inch	12W	120 V	TRIAC	962/971/992/1,009/996 lm	5CCT (2,700/3,000/3,500/4,000/5,000 K)	-	White	7-5/16" x 3-7/16"
ASD-LRKR-6D12AC-BR	5 and 6 inch	12W	120 V	TRIAC	962/971/992/1,009/996 lm	5CCT (2,700/3,000/3,500/4,000/5,000 K)	-	Bronze	7-5/16" x 3-7/16"
ASD-LRKR-6D12AC-BZ-6PACK	5 and 6 inch	12W	120 V	TRIAC	962/971/992/1,009/996 lm	5CCT (2,700/3,000/3,500/4,000/5,000 K)	-	Bronze	7-5/16" x 3-7/16"
ASD-LRKR-6D12AC-BK	5 and 6 inch	12W	120 V	TRIAC	962/971/992/1,009/996 lm	5CCT (2,700/3,000/3,500/4,000/5,000 K)	-	Black	7-5/16" x 3-7/16"
ASD-LRKR-6D12AC-BK-6PACK	5 and 6 inch	12W	120 V	TRIAC	962/971/992/1,009/996 lm	5CCT (2,700/3,000/3,500/4,000/5,000 K)	-	Black	7-5/16" x 3-7/16"
LRKS SQUARE									
ASD-LRKS-4D9AC-WH-6PACK	4 inch	8.6W	120 V	TRIAC	662/674/677/709/691 lm	5CCT (2,700/3,000/3,500/4,000/5,000 K)	-	White	5" x 5" x 2-1/16"
ASD-LRKS-4D9AC-BZ-6PACK	4 inch	8.6W	120 V	TRIAC	662/674/677/709/691 lm	5CCT (2,700/3,000/3,500/4,000/5,000 K)	-	Bronze	5" x 5" x 2-1/16"
ASD-LRKS-4D9AC-BK-6PACK	4 inch	8.6W	120 V	TRIAC	662/674/677/709/691 lm	5CCT (2,700/3,000/3,500/4,000/5,000 K)	-	Black	5" x 5" x 2-1/16"
ASD-LRKS-6D12AC-WH-6PACK	6 inch	12W	120 V	TRIAC	965/977/986/988/1,023 lm	5CCT (2,700/3,000/3,500/4,000/5,000 K)	-	White	7-5/16" x 7-5/16" x 1-7/8"
ASD-LRKS-6D12AC-BZ-6PACK	6 inch	12W	120 V	TRIAC	965/977/986/988/1,023 lm	5CCT (2,700/3,000/3,500/4,000/5,000 K)	-	Bronze	7-5/16" x 7-5/16" x 1-7/8"
ASD-LRKS-6D12AC-BK-6PACK	6 inch	12W	120 V	TRIAC	965/977/986/988/1,023 lm	5CCT (2,700/3,000/3,500/4,000/5,000 K)	-	Black	7-5/16" x 7-5/16" x 1-7/8"
LRK-GBR ROUND GIMBAL									
ASD-LRK-GBR-4D10AC-WH-6PACK	4 inch	10W	120 V	TRIAC	650/771/846/860/841 lm	5CCT (2,700/3,000/3,500/4,000/5,000 K)	Yes	White	5-3/8" x 2-13/16"
ASD-LRK-GBR-4D10AC-BZ-6PACK	4 inch	10W	120 V	TRIAC	650/771/846/860/841 lm	5CCT (2,700/3,000/3,500/4,000/5,000 K)	Yes	Bronze	5-3/8" x 2-13/16"
ASD-LRK-GBR-4D10AC-BK-6PACK	4 inch	10W	120 V	TRIAC	650/771/846/860/841 lm	5CCT (2,700/3,000/3,500/4,000/5,000 K)	Yes	Black	5-3/8" x 2-13/16"
ASD-LRK-GBR-6D15AC-WH-6PACK	6 inch	15W	120 V	TRIAC	1,100/1,243/1,310/1,308/1,221 lm	5CCT (2,700/3,000/3,500/4,000/5,000 K)	Yes	White	7-11/16" x 3-1/16"
ASD-LRK-GBR-6D15AC-BZ-6PACK	6 inch	15W	120 V	TRIAC	1,100/1,243/1,310/1,308/1,221 lm	5CCT (2,700/3,000/3,500/4,000/5,000 K)	Yes	Bronze	7-11/16" x 3-1/16"
ASD-LRK-GBR-6D15AC-BK-6PACK	6 inch	15W	120 V	TRIAC	1,100/1,243/1,310/1,308/1,221 lm	5CCT (2,700/3,000/3,500/4,000/5,000 K)	Yes	Black	7-11/16" x 3-1/16"

For most up-to-date spec sheets please refer to asd-lighting.com

ASD LIGHTING CORP

E-mail: orders@asd-lighting.com | Web site: www.asd-lighting.com





LED DOWNLIGHT RETROFIT KIT

PRODUCT SPECIFICATIONS:

Construction & Materials					
Housing	Plastic		for LRK-GBR models: Aluminum		
Lens	PC		for LRK-GBR models: Acrylic		
Finish	White, Bronze, Black				
Weight	ASD-LRKR-4D9AC-WH	0.2 lbs (0.1 kg)	ASD-LRKS-4D9AC-WH-6PACK	1.5 lbs (0.7 kg)	
	ASD-LRKR-4D9AC-WH-6PACK	1.5 lbs (0.7 kg)	ASD-LRKS-4D9AC-BZ-6PACK		
	ASD-LRKR-4D9AC-WH-12PACK	2.9 lbs (1.3 kg)	ASD-LRKS-4D9AC-BK-6PACK		
	ASD-LRKR-4D9AC-BZ-6PACK	1.5 lbs (0.7 kg)	ASD-LRKS-6D12AC-WH-6PACK	2.4 lbs (1.1 kg)	
	ASD-LRKR-4D9AC-BK-6PACK		ASD-LRKS-6D12AC-BZ-6PACK		
	ASD-LRKR-6D12AC-WH-6PACK	2.2 lbs (1 kg)	ASD-LRKS-6D12AC-BK-6PACK	3.6 lbs (1.6 kg)	
	ASD-LRKR-6D12AC-WH-12PACK	4.5 lbs (2 kg)	ASD-LRK-GBR-4D10AC-WH-6PACK		
	ASD-LRKR-6D12AC-BR	0.4 lbs (0.2 kg)	ASD-LRK-GBR-4D10AC-BZ-6PACK		
	ASD-LRKR-6D12AC-BZ-6PACK	2.2 lbs (1 kg)	ASD-LRK-GBR-4D10AC-BK-6PACK	5 lbs (2.3 kg)	
	ASD-LRKR-6D12AC-BK	0.4 lbs (0.2 kg)	ASD-LRK-GBR-6D15AC-WH-6PACK		
ASD-LRKR-6D12AC-BK-6PACK	2.2 lbs (1 kg)	ASD-LRK-GBR-6D15AC-BZ-6PACK			
			ASD-LRK-GBR-6D15AC-BK-6PACK		
Environmental system					
Work environment	Suitable for Wet Locations				
Operating temperature	-4°F to 104°F (-20°C to 40°C)				
L-70 Life	> 50,000 hrs				
Optical system					
Luminous flux	ASD-LRKR-4D9AC-WH	674/684/688/702/696 lm	ASD-LRKS-4D9AC-WH-6PACK	662/674/677/709/691 lm	
	ASD-LRKR-4D9AC-WH-6PACK		ASD-LRKS-4D9AC-BZ-6PACK		
	ASD-LRKR-4D9AC-WH-12PACK		ASD-LRKS-4D9AC-BK-6PACK		
	ASD-LRKR-4D9AC-BZ-6PACK		ASD-LRKS-6D12AC-WH-6PACK		
	ASD-LRKR-4D9AC-BK-6PACK	962/971/992/1,009/996 lm	ASD-LRKS-6D12AC-BZ-6PACK	965/977/986/988/1,023 lm	
	ASD-LRKR-6D12AC-WH-6PACK		ASD-LRKS-6D12AC-BK-6PACK		
	ASD-LRKR-6D12AC-WH-12PACK		ASD-LRK-GBR-4D10AC-WH-6PACK	650/771/846/860/841 lm	
	ASD-LRKR-6D12AC-BR		ASD-LRK-GBR-4D10AC-BZ-6PACK		
	ASD-LRKR-6D12AC-BZ-6PACK		ASD-LRK-GBR-4D10AC-BK-6PACK		
	ASD-LRKR-6D12AC-BK		ASD-LRK-GBR-6D15AC-WH-6PACK	1,100/1,243/1,310/1,308/1,221 lm	
	ASD-LRKR-6D12AC-BK-6PACK		ASD-LRK-GBR-6D15AC-BZ-6PACK		
			ASD-LRK-GBR-6D15AC-BK-6PACK		
Color temperature	5CCT switch (2,700/3,000/3,500/4,000/5,000 K), 3,000 K by default				
CRI	> 90				
Electrical system					
Input voltage	120 V				
Max input current	for LRK 4 inch models: 0.086 A	for LRK 6 inch models: 0.12 A	for LRK-GBR 4 inch models: 0.12 A	for LRK-GBR 6 inch models: 0.15 A	
Inrush current (Action time)	40 A (0.2 S)		for LRK-GBR 4 inch models: 30 A (0.3 S)	for LRK-GBR 6 inch models: 40 A (0.3 S)	
Off state power	0W				
Power consumption	for LRK 4 inch models: 8.6W	for LRK 6 inch models: 12W	for LRK-GBR 4 inch models: 10W	for LRK-GBR 6 inch models: 15W	
Power factor	> 0.8		for LRK-GBR models: > 0.9		
Output voltage	135 V		for LRK-GBR 4 inch models: 60 V	for LRK-GBR 6 inch models: 90 V	
Max output current	for 4 inch models: 0.055 A	for 6 inch models: 0.075 A	for LRK-GBR models: 0.15 A		
Surge protection DM/CM	2.5 kV / 2.5 kV				
Dimming range			Regular and voluntary certifications		
10-100%			5-year limited warranty		
Dimming compatible controls			Energy Star listed (only for LRK-GBR)		
Brand	Lutron		UL certified E475148		
Models	DVW-603PGH-WH	DVLV-603P-IV	NT-1000	DB33K1	6683
	MIR-600THW-WH	S-600PR-WH	S-603P	1E1205	6674
	MACL-153M-WH	MALV-600	S-600P	1F4205	6672
	CT-603PGH-WH	DV-600P	4X603	VP106	6631
	DVCL-153P-WH				
Dimming compatible controls *					
Brand	Lutron		Leviton		
Models	DVWCL-153PH-LA	DVCL-163P-WH	DV-600P	DSL06-1TW	6683
	DVW-603PGH-WH	SCL-153PR-WH	NT-1000	DB33K1	6674
	CTCL-153PDH-WH	CTCL-150H-WH	S-603P	1A2305	6672
	MACL-153MR-WH	CT-600PR-WH	S-600P	6633-P	6631
	CTCL-153PDH-LA	CT-103PR-WH	4X603	IPL06	
	CTCL-153PR-WH	SLV-600P-WH			
	MACL-153M-WH	DVLV-603P-IV			

PACKAGE CONTENTS:

Description	Q-ty
LED Downlight Retrofit Kit	1 (6 for 6 pack/ 12 for 12 pack)
Adapter (A)	1 (6 for 6 pack/ 12 for 12 pack)
Box	1

A

* The list of dimmers is relevant for LRK-GBR models.

PACKAGE CONTENTS:

Description	Q-ty
LED Downlight Retrofit Kit	1 (6 for 6 pack/12 for 12 pack)
Adapter (A)	1 (6 for 6 pack/12 for 12 pack)
Box	1



For most up-to-date spec sheets please refer to asd-lighting.com

ASD LIGHTING CORP

E-mail: orders@asd-lighting.com | Web site: www.asd-lighting.com





LED DOWNLIGHT RETROFIT KIT

INSTALLATION GUIDE

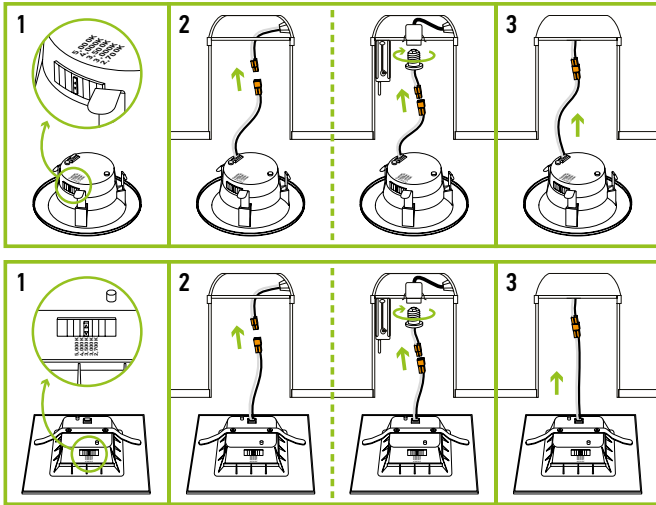
IMPORTANT SAFETY INFORMATION:

Please read all the instructions below before installation.

- ▶ Make sure that the supply voltage corresponds to the rated product voltage.
- ▶ The product must be installed by a qualified electrician in accordance with the National Electrical Code and corresponding local codes.
- ▶ If the product is damaged, do not use it.

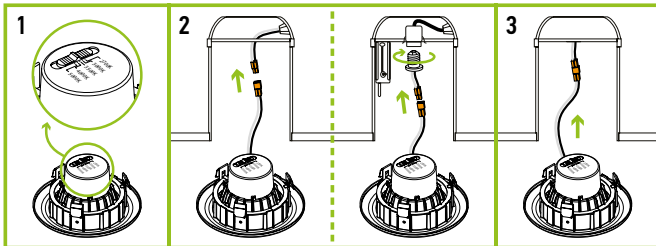
INSTALLATION STEPS 4" AND 6":

1. Choose needed color temperature by adjusting the switch.
2. Turn off the main power and remove the existing trim and bulb from the can. Use one of the options to connect the terminals.
3. Carefully route wires into the can and gently push the fixture up into the can until sealed.



INSTALLATION STEPS GIMBAL 4":

1. Choose needed color temperature by adjusting the switch.
2. Turn off the main power and remove the existing trim and bulb from the can. Use one of the options to connect the terminals.
3. Carefully route wires into the can and gently push the fixture up into the can until sealed.



⚠ WARNING

RISK OF PERSONAL INJURY – READ and follow all WARNINGS and installation instructions. Keep or give to the owner for future reference.

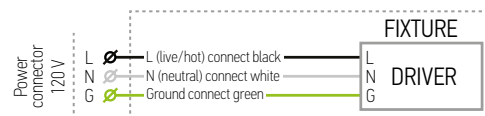
Risk of cuts: Wear gloves to prevent cuts or abrasions when removing from carton, handling, installing, and maintaining this product.

Risk of electric shock: This product must be installed in accordance with the applicable installation code by a person familiar with the construction and operation of the product and the hazards involved.

Risk of Fire: Minimum 194°F supply conductors. Consult a qualified electrician to ensure correct branch circuit conductor.

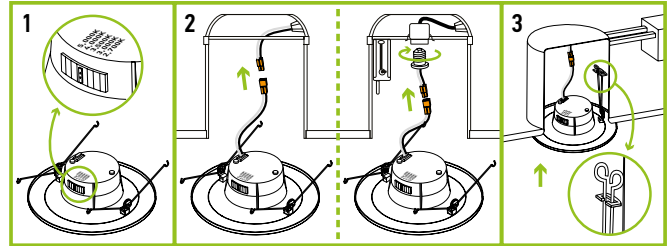
ASD® assumes no responsibility for claims arising out of improper or careless installation or handling of this product.

ELECTRICAL SCHEMATIC DIAGRAM:



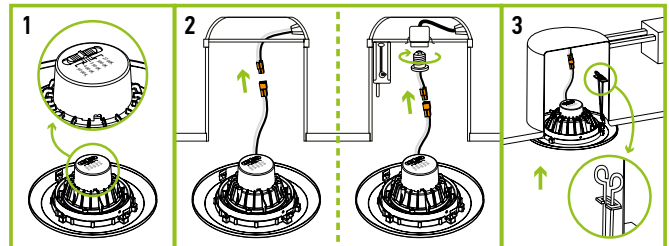
INSTALLATION STEPS 5" AND 6" ROUND:

1. Choose needed color temperature by adjusting the switch.
2. Turn off the main power and remove the existing trim and bulb from the Can. Use one of the options to connect the terminals.
3. Squeeze the two sets of spring clip arms up toward each other. Route wires into the Can and hook both springs into the arm hook on the inside of Can. Release springs and gently push the fixture up into the Can until sealed.



INSTALLATION STEPS GIMBAL 6":

1. Choose needed color temperature by adjusting the switch.
2. Turn off the main power and remove the existing trim and bulb from the Can. Use one of the options to connect the terminals.
3. Squeeze the two sets of spring clip arms up toward each other. Route wires into the Can and hook both springs into the arm hook on the inside of Can. Release springs and gently push the fixture up into the Can until sealed.



For most up-to-date spec sheets please refer to asd-lighting.com



LED DOWNLIGHT RETROFIT KIT

ORDERING INFORMATION

Model	UPC	Pcs. per carton	Carton size	Carton weight	GTIN 14
LRKR ROUND					
ASD-LRKR-4D9AC-WH	810050739290	6	11" x 7.9" x 5.8"	2.7 lbs	10810050739297
ASD-LRKR-4D9AC-WH-6PACK	810050738682	2	13" x 10" x 7.1"	5.1 lbs	10810050738689
ASD-LRKR-4D9AC-WH-12PACK	810050738941	1	12.4" x 9.5" x 5.7"	3.8 lbs	-
ASD-LRKR-4D9AC-BZ-6PACK	810050739474	2	13" x 10" x 7.1"	5.1 lbs	10810050739471
ASD-LRKR-4D9AC-BK-6PACK	810050739467	2	13" x 10" x 7.1"	5.1 lbs	10810050739464
ASD-LRKR-6D12AC-WH-6PACK	810050738699	2	16.9" x 13.8" x 7.5"	6.6 lbs	10810050738696
ASD-LRKR-6D12AC-WH-12PACK	810050738958	1	13.4" x 12.4" x 7.3"	6 lbs	-
ASD-LRKR-6D12AC-BR	810128115094	6	15.6" x 7.9" x 8.1"	3.8 lbs	10810128115091
ASD-LRKR-6D12AC-BZ-6PACK	810050739542	2	16.9" x 13.8" x 7.5"	6.6 lbs	10810050739549
ASD-LRKR-6D12AC-BK	810050739573	6	15.6" x 7.9" x 8.1"	3.8 lbs	10810050739570
ASD-LRKR-6D12AC-BK-6PACK	810050739535	2	16.9" x 13.8" x 7.5"	6.6 lbs	10810050739532
LRKS SQUARE					
ASD-LRKS-4D9AC-WH-6PACK	810050739603	2	15.4" x 11.2" x 6.5"	4.9 lbs	10810050739600
ASD-LRKS-4D9AC-BZ-6PACK	810050739634	2	15.4" x 11.2" x 6.5"	4.9 lbs	10810050739631
ASD-LRKS-4D9AC-BK-6PACK	810050739627	2	15.4" x 11.2" x 6.5"	4.9 lbs	10810050739624
ASD-LRKS-6D12AC-WH-6PACK	810050739658	2	16.3" x 15.8" x 5.5"	7.5 lbs	10810050739655
ASD-LRKS-6D12AC-BZ-6PACK	810050739696	2	16.3" x 15.8" x 5.5"	7.5 lbs	10810050739693
ASD-LRKS-6D12AC-BK-6PACK	810050739672	2	16.3" x 15.8" x 5.5"	7.5 lbs	10810050739679
LRK-GBR ROUND GIMBAL					
ASD-LRK-GBR-4D10AC-WH-6PACK	810050738309	2	11.2" x 10.6" x 12.6"	9.4 lbs	10810050738306
ASD-LRK-GBR-4D10AC-BZ-6PACK	810128110358	2	11.2" x 10.6" x 12.6"	9.4 lbs	10810128110355
ASD-LRK-GBR-4D10AC-BK-6PACK	819201023295	2	11.2" x 10.6" x 12.6"	9.4 lbs	10819201023292
ASD-LRK-GBR-6D15AC-WH-6PACK	810050738316	2	22" x 14.6" x 9.3"	12.8 lbs	10810050738313
ASD-LRK-GBR-6D15AC-BZ-6PACK	810128110365	2	22" x 14.6" x 9.3"	12.8 lbs	10810128110362
ASD-LRK-GBR-6D15AC-BK-6PACK	819201022823	2	22" x 14.6" x 9.3"	12.8 lbs	10819201022820

For most up-to-date spec sheets please refer to asd-lighting.com

ASD LIGHTING CORP

E-mail: orders@asd-lighting.com | Web site: www.asd-lighting.com

