



LED ROUND DOWNLIGHT with Junction box

► **DESIGN & OPTIONS** - LED ROUND DOWNLIGHT WITH JUNCTION BOX has a classic, low-profile design with a baffle trim that allows you to have a stylish look with efficient lighting. Smooth dimming capabilities ranging from 100% to 10% with modern LED dimmers allow you to control the look and feel of your space. You can choose either 3000K, 4000K or 5000K color temperature. The 120° beam angle grants you smooth and even lighting.

► **INSTALLATION** - This fixture has an integrated J-box, making installation quick and easy. It has everything you need in one set. Just cut out the template, connect the J-box wiring on the back of the recessed downlight to your light switch, and place it into your ceiling. Spring-loaded clips ensure a snug fit to the surface. This fixture is IC rated so there is no can or any other housing required. Refer to install instructions for detailed steps.

► **APPLICATION** - Install the fixture to the ceiling for bright light in your family room, bedroom, hallways, corridors, or any other common areas in your living space. It is also suitable for Wet locations, making it perfect for kitchen and bathroom lighting as well. You could also use it as a complimentary light to an existing ceiling light.

► **ENERGY SAVINGS & EFFICIENCY** - Replacing an incandescent bulb with the LED ROUND DOWNLIGHT WITH JUNCTION BOX can save you up to 8 times as much on your current energy costs. With a lifespan of 50,000 hours, these fixtures are made to last decades under normal operation! This fixture will save you a significant amount of money in its lifetime.

► **CERTIFICATION & WARRANTY** - Buy with confidence: ASD provides a 5-year warranty along with ETL and ENERGY STAR certifications to guarantee top quality products and safety!

Top US certifications allow participation in rebates; please check the rebate programs available in your state.

Catalog number	
Notes	
Type	



PRODUCT LEGEND:

Family	Size	Dimmable	Watts	CCT	Finish
ASD-LDLOBR	X	X	XX	XX	XX
LED Round Downlight with Junction box	4 = 4 inch 6 = 6 inch	D = Dimmable	10 = 10 W 15 = 15 W	30 = 3,000 K 40 = 4,000 K 50 = 5,000 K	WH = White

LED ROUND DOWNLIGHT WITH JUNCTION BOX:

Model	Size	Watts	Voltage	Dimmable	CCT	Lumens	Dimensions (LxWxH)
ASD-LDLOBR-4D1030-WH	4 inch	10 W	120 V	TRIAC	3,000 K	635 lm	5" x 5" x 3 7/8"
ASD-LDLOBR-4D1040-WH	4 inch	10 W	120 V	TRIAC	4,000 K	635 lm	5" x 5" x 3 7/8"
ASD-LDLOBR-4D1050-WH	4 inch	10 W	120 V	TRIAC	5,000 K	635 lm	5" x 5" x 3 7/8"
ASD-LDLOBR-6D1530-WH	6 inch	15 W	120 V	TRIAC	3,000 K	1,000 lm	7 3/8" x 7 3/8" x 3 3/4"
ASD-LDLOBR-6D1540-WH	6 inch	15 W	120 V	TRIAC	4,000 K	1,000 lm	7 3/8" x 7 3/8" x 3 3/4"
ASD-LDLOBR-6D1550-WH	6 inch	15 W	120 V	TRIAC	5,000 K	1,000 lm	7 3/8" x 7 3/8" x 3 3/4"

ORDERING INFORMATION:

Model	UPC	Pcs in middle box	Middle box Size	Middle box Weight	GTIN 14 for Middle box	Pcs. per Carton	Carton Size	Carton Weight	GTIN 14 for Carton
ASD-LDLOBR-4D1030-WH	810050731256	6	12.8" x 10.6" x 5.5"	5.1 lb	10810050731253	12	21.9" x 13.4" x 6.3"	11 lb	20810050731250
ASD-LDLOBR-4D1040-WH	810050731263	6	12.8" x 10.6" x 5.5"	5.1 lb	10810050731260	12	21.9" x 13.4" x 6.3"	11 lb	20810050731267
ASD-LDLOBR-4D1050-WH	810050731270	6	12.8" x 10.6" x 5.5"	5.1 lb	10810050731277	12	21.9" x 13.4" x 6.3"	11 lb	20810050731274
ASD-LDLOBR-6D1530-WH	810050731287	-	-	-	-	12	15.6" x 12.6" x 15.7"	14.3 lb	30810050731288
ASD-LDLOBR-6D1540-WH	810050731294	-	-	-	-	12	15.6" x 12.6" x 15.7"	14.3 lb	30810050731295
ASD-LDLOBR-6D1550-WH	810050731300	-	-	-	-	12	15.6" x 12.6" x 15.7"	14.3 lb	30810050731301

For most up-to-date spec sheets please refer to asd-lighting.com




LED ROUND DOWNLIGHT with Junction box

PRODUCT SPECIFICATIONS:

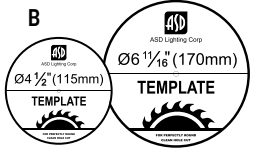
Construction & Materials				
Housing	Aluminum, PC			
Lens	Acrylic			
Finish Color	White			
Weight	ASD-LDLOBR-4D1030-WH	0.6 lb (0.3 kg)		
	ASD-LDLOBR-4D1040-WH			
	ASD-LDLOBR-4D1050-WH			
	ASD-LDLOBR-6D1530-WH	0.9 lb (0.4 kg)		
	ASD-LDLOBR-6D1540-WH			
	ASD-LDLOBR-6D1550-WH			
Environmental System				
Work Environment	Suitable for Wet Locations			
Operating Temperature	-13°F to 113°F (-25°C to 45°C)			
L-70 Life	> 50,000 hrs			
Optical System				
Luminous Flux	ASD-LDLOBR-4D1030-WH	635 lm		
	ASD-LDLOBR-4D1040-WH			
	ASD-LDLOBR-4D1050-WH			
	ASD-LDLOBR-6D1530-WH	1,000 lm		
	ASD-LDLOBR-6D1540-WH			
	ASD-LDLOBR-6D1550-WH			
Color Temperature	3,000 K; 4,000 K; 5,000 K			
CRI	> 90			
Electrical System				
Input Voltage	120 V			
Max input current	ASD-LDLOBR-4D1030-WH	0.1 A		
	ASD-LDLOBR-4D1040-WH			
	ASD-LDLOBR-4D1050-WH			
	ASD-LDLOBR-6D1530-WH	0.15 A		
	ASD-LDLOBR-6D1540-WH			
	ASD-LDLOBR-6D1550-WH			
Inrush current (Action time)	0.2 A (0.03 S)			
AC input range	min 108 V max 132 V			
Off State Power	0 W			
Power Consumption	ASD-LDLOBR-4D1030-WH	10 W		
	ASD-LDLOBR-4D1040-WH			
	ASD-LDLOBR-4D1050-WH			
	ASD-LDLOBR-6D1530-WH	15 W		
	ASD-LDLOBR-6D1540-WH			
	ASD-LDLOBR-6D1550-WH			
Power Factor	> 0.9			
Output voltage	132 V			
Max output current	ASD-LDLOBR-4D1030-WH	60 mA		
	ASD-LDLOBR-4D1040-WH			
	ASD-LDLOBR-4D1050-WH			
	ASD-LDLOBR-6D1530-WH	90 mA		
	ASD-LDLOBR-6D1540-WH			
	ASD-LDLOBR-6D1550-WH			
LED Driver Class	DOB			
Control				
Dimming Range 10-100%				
Dimming compatible controls				
Brand	Lutron		Leviton	
	DVCL-153P-WH	SLV-600P-WH	6672 6674	
Models	MACL-153M-WH	CT-603PG	0B33K1 6631	
	S-600P	S-603P	1E1205	
	DVLY-603P-IV	DV-600P	1F4205	
	CTCL-153PDH	DVW-603PGH-WH	6633-P	
	Regular and Voluntary Certifications			
	5-year limited warranty			
cETLus certified 4008281				
Energy Star listed				

PACKAGE CONTENTS:

Description	Q-ty
LED Round Downlight with Junction box	1
Wire Nut (A)	3
Template for 4 inch or 6 inch (B)	1
Box	1
Cut sheet	2



A



B

INSTALLATION GUIDE

IMPORTANT SAFETY INFORMATION:

Please read all the instructions below before installation.

- ▶ Make sure that the supply voltage corresponds to the rated product voltage.
- ▶ The product must be installed by a qualified electrician in accordance with the National Electrical Code and corresponding local codes.
- ▶ If the product is damaged, do not use it.

⚠ WARNING

RISK OF PERSONAL INJURY – READ and follow all WARNINGS and installation instructions.

Keep or give to the owner for future reference.

Risk of cuts: Wear gloves to prevent cuts or abrasions when removing from carton, handling, installing, and maintaining this product.

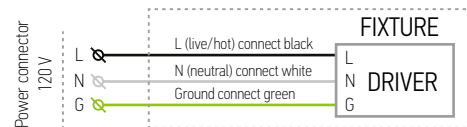
Risk of electric shock: This product must be installed in accordance with the applicable installation code by a person familiar with the construction and operation of the product and the hazards involved.

Risk of Fire: Minimum 194°F supply conductors. Consult a qualified electrician to ensure correct branch circuit conductor.

ASD® assumes no responsibility for claims arising out of improper or careless installation or handling of this product.

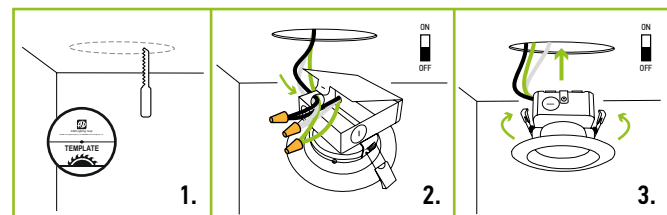
For recessed installation: Access above ceiling required. Inherently protected. Vapor barrier must be suitable for 194°F

ELECTRICAL SCHEMATIC DIAGRAM:



INSTALLATION STEPS:

1. Use template to cut an appropriate sized hole.
2. Open the junction box. Connect the wires: Black to Black, White to White, Green to Green. Secure the connection with wire nuts. Tuck all the wires back into junction box and close it.
3. Push the spring loaded clips upwards and insert the fixture base into the mounting hole. Release the clips and the fixture will be "pulled" into place against the ceiling. Once assembly is complete, turn the power on to ensure the fixture is operating properly.



For most up-to-date spec sheets please refer to asd-lighting.com