



LED OUTDOOR WALL SCONCE

► **DESIGN & OPTIONS** - LED OUTDOOR WALL SCONCE has a contemporary design and a stylish look with efficient lighting. The durable steel base is highly resistant to rust, and the acrylic lens with a 350° beam angle ensures even light distribution. The modern LED dimmers provide smooth dimming capabilities ranging from 10% to 100%. The fixture includes a CCT option, letting you set it to 3,000K, 4,000K, or 5,000K with a simple switch. It comes in 18", 24", 36", and 48" sizes, and a WHITE or BLACK finish.

► **INSTALLATION** - Installation is quick and easy: just attach the mounting plate to the outlet box with screws, connect the wires, and fasten the fixture to the mounting plate. All necessary installation accessories are provided. Refer to install instructions for detailed steps.

► **APPLICATION** - This LED OUTDOOR WALL SCONCE is an ideal maintenance-free solution for residential and commercial applications. It creates a cozy ambience that is great for indoor and outdoor projects such as decks, front doors, porches, gardens, corridors, balconies, villas, and walkways. The fixture is Wet Locations rated and suitable for severe weather conditions.

► **ENERGY SAVINGS & EFFICIENCY** - With a lifespan of 50,000 hours, these fixtures are made to last decades under normal operation! This fixture can cut your electric bill by up to 80% instantly and will save you a significant amount of money in its lifetime.

► **CERTIFICATION & WARRANTY** - Buy with confidence: ASD provides a 5-year limited warranty along with ETL certification to guarantee top quality products and safety!

Catalog number	
Notes	
Type	



Finish: ☐ White ☐ Black



Model	Size	Watts	Voltage	Dimmable	Lumens	CCT	Finish	Dimensions (LxWxH)
ASD-LWS27-18D18CC-WH	18 inch	18W	120 V	TRIAC	1,364/1,541/1,430 lm	3CCT (3,000/4,000/5,000 K)	White	18" x 5-7/8" x 1-13/16"
ASD-LWS27-18D18CC-BK	18 inch	18W	120 V	TRIAC	1,364/1,541/1,430 lm	3CCT (3,000/4,000/5,000 K)	Black	18" x 5-7/8" x 1-13/16"
ASD-LWS27-24D24CC-WH	24 inch	24W	120 V	TRIAC	1,875/2,204/2,061 lm	3CCT (3,000/4,000/5,000 K)	White	24" x 5-7/8" x 1-13/16"
ASD-LWS27-24D24CC-BK	24 inch	24W	120 V	TRIAC	1,875/2,204/2,061 lm	3CCT (3,000/4,000/5,000 K)	Black	24" x 5-7/8" x 1-13/16"
ASD-LWS27-36D30CC-WH	36 inch	30W	120 V	TRIAC	2,226/2,465/2,304 lm	3CCT (3,000/4,000/5,000 K)	White	36" x 5-7/8" x 1-13/16"
ASD-LWS27-36D30CC-BK	36 inch	30W	120 V	TRIAC	2,226/2,465/2,304 lm	3CCT (3,000/4,000/5,000 K)	Black	36" x 5-7/8" x 1-13/16"
ASD-LWS27-48D36CC-WH	48 inch	36W	120 V	TRIAC	2,598/2,844/2,685 lm	3CCT (3,000/4,000/5,000 K)	White	48-1/16" x 5-7/8" x 1-13/16"
ASD-LWS27-48D36CC-BK	48 inch	36W	120 V	TRIAC	2,598/2,844/2,685 lm	3CCT (3,000/4,000/5,000 K)	Black	48-1/16" x 5-7/8" x 1-13/16"

ORDERING INFORMATION

Model	UPC	Pcs. per carton	Carton size	Carton weight	GTIN 14
ASD-LWS27-18D18CC-WH	810050738088	4	23.6" x 18.5" x 9.8"	28 lbs	10810050738085
ASD-LWS27-18D18CC-BK	810050738071	4	23.6" x 18.5" x 9.8"	28 lbs	10810050738078
ASD-LWS27-24D24CC-WH	810050738101	4	29.5" x 18.5" x 9.8"	34.8 lbs	10810050738108
ASD-LWS27-24D24CC-BK	810050738095	4	29.5" x 18.5" x 9.8"	34.8 lbs	10810050738092
ASD-LWS27-36D30CC-WH	810050738125	2	41.5" x 9.5" x 9.8"	26.7 lbs	20810050738129
ASD-LWS27-36D30CC-BK	810050738118	2	41.5" x 9.5" x 9.8"	26.7 lbs	20810050738112
ASD-LWS27-48D36CC-WH	810050738149	2	53.5" x 9.5" x 9.8"	35 lbs	20810050738143
ASD-LWS27-48D36CC-BK	810050738132	2	53.5" x 9.5" x 9.8"	35 lbs	20810050738136

For most up-to-date spec sheets please refer to asd-lighting.com

ASD LIGHTING CORP

E-mail: orders@asd-lighting.com | Web site: www.asd-lighting.com





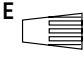



LED OUTDOOR WALL SCONCE

PRODUCT SPECIFICATIONS:

Construction & Materials				
Housing	Steel			
Lens	Acrylic			
Finish	White, Black			
Weight	ASD-LWS27-18D18CC-WH	5.4 lbs (2.4 kg)	ASD-LWS27-36D30CC-WH	11 lbs (5 kg)
	ASD-LWS27-18D18CC-BK		ASD-LWS27-36D30CC-BK	
	ASD-LWS27-24D24CC-WH	6.9 lbs (3.1 kg)	ASD-LWS27-48D36CC-WH	14.5 lbs (6.6 kg)
	ASD-LWS27-24D24CC-BK		ASD-LWS27-48D36CC-BK	
Environmental system				
Work environment	Suitable for Wet Locations, IP44			
Operating temperature	-4°F to 113°F (-20°C to 45°C)			
L-70 Life	> 50,000 hrs			
Optical system				
Luminous flux	ASD-LWS27-18D18CC-WH	1,364/1,541/1,430 lm	ASD-LWS27-36D30CC-WH	2,226/2,465/2,304 lm
	ASD-LWS27-18D18CC-BK		ASD-LWS27-36D30CC-BK	
	ASD-LWS27-24D24CC-WH	1,875/2,204/2,061 lm	ASD-LWS27-48D36CC-WH	2,598/2,844/2,685 lm
	ASD-LWS27-24D24CC-BK		ASD-LWS27-48D36CC-BK	
Color temperature	3CCT (3,000/4,000/5,000 K)			
CRI	> 80			
Electrical system				
Input voltage	120 V			
Max input current	ASD-LWS27-18D18CC-WH	0.17 A	ASD-LWS27-36D30CC-WH	0.28 A
	ASD-LWS27-18D18CC-BK		ASD-LWS27-36D30CC-BK	
	ASD-LWS27-24D24CC-WH	0.22 A	ASD-LWS27-48D36CC-WH	0.33 A
	ASD-LWS27-24D24CC-BK		ASD-LWS27-48D36CC-BK	
Inrush current (Action time)	ASD-LWS27-18D18CC-WH	0.15 A (0.1 S)	ASD-LWS27-36D30CC-WH	0.25 A (0.1 S)
	ASD-LWS27-18D18CC-BK		ASD-LWS27-36D30CC-BK	
	ASD-LWS27-24D24CC-WH	0.2 A (0.1 S)	ASD-LWS27-48D36CC-WH	0.3 A (0.1 S)
	ASD-LWS27-24D24CC-BK		ASD-LWS27-48D36CC-BK	
Off state power	0W			
Power consumption	ASD-LWS27-18D18CC-WH	18W	ASD-LWS27-36D30CC-WH	30W
	ASD-LWS27-18D18CC-BK		ASD-LWS27-36D30CC-BK	
	ASD-LWS27-24D24CC-WH	24W	ASD-LWS27-48D36CC-WH	36W
	ASD-LWS27-24D24CC-BK		ASD-LWS27-48D36CC-BK	
Power factor	> 0.9			
Output voltage	36 V			
Max output current	ASD-LWS27-18D18CC-WH	0.45 A	ASD-LWS27-36D30CC-WH	0.7 A
	ASD-LWS27-18D18CC-BK		ASD-LWS27-36D30CC-BK	
	ASD-LWS27-24D24CC-WH	0.6 A	ASD-LWS27-48D36CC-WH	0.85 A
	ASD-LWS27-24D24CC-BK		ASD-LWS27-48D36CC-BK	
Surge protection DM/CM	1.25 kV / 1.25 kV			
Dimming range				
10-100%				
Dimming compatible controls				
Brand	Lutron		Leviton	
Models	MACL-153MLH	STCL-153PH	DSL06	
	DVCL-153PR	P-PKG1W	RNL06	
Regular and voluntary certifications				
5-year limited warranty				
cETLus certified 4001256				

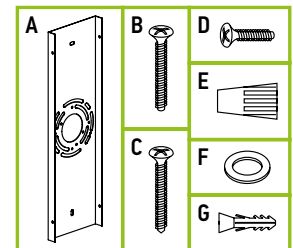
PACKAGE CONTENTS:

Description	Q-ty
LED Outdoor Wall Sconce	1
Mounting plate (A)	1
Mounting screw (B)	2
Self-tapping screw (C)	2



PACKAGE CONTENTS:

Description	Q-ty
LED Outdoor Wall Sconce	1
Mounting plate (A)	1
Mounting screw (B)	2
Self-tapping screw (C)	2
Fixture screw (D)	4
Wire nut (E)	3
Waterproof gasket (F)	4
Anchor (G)	1
Box	1



For most up-to-date spec sheets please refer to asd-lighting.com

ASD LIGHTING CORP

E-mail: orders@asd-lighting.com | Web site: www.asd-lighting.com





LED OUTDOOR WALL SCONCE

INSTALLATION GUIDE

IMPORTANT SAFETY INFORMATION:

Please read all the instructions below before installation.

- ▶ Make sure that the supply voltage corresponds to the rated product voltage.
- ▶ The product must be installed by a qualified electrician in accordance with the National Electrical Code and corresponding local codes.
- ▶ If the product is damaged, do not use it.

⚠ WARNING

RISK OF PERSONAL INJURY – READ and follow all WARNINGS and installation instructions. Keep or give to the owner for future reference.

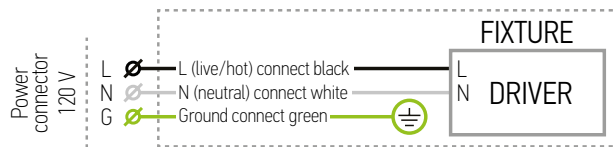
Risk of cuts: Wear gloves to prevent cuts or abrasions when removing from carton, handling, installing, and maintaining this product.

Risk of electric shock: This product must be installed in accordance with the applicable installation code by a person familiar with the construction and operation of the product and the hazards involved.

Risk of Fire: Minimum 194°F supply conductors. Consult a qualified electrician to ensure correct branch circuit conductor.

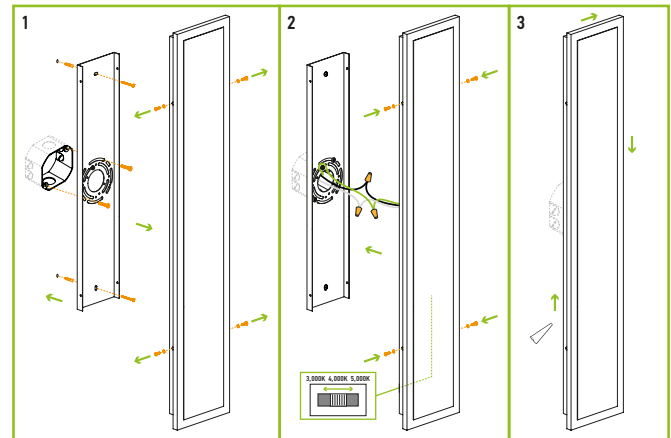
ASD® assumes no responsibility for claims arising out of improper or careless Installation or handling of this product.

ELECTRICAL SCHEMATIC DIAGRAM:



INSTALLATION STEPS:

1. Unscrew the four fixture screws from both sides and remove the mounting plate. Attach the mounting plate to the outlet box and mark the location of the holes, drill two holes for anchors, insert anchors into the holes, twist the two self-tapping screws. Attach the mounting plate to the outlet box using two mounting screws and tighten self-tapping screws.
2. Connect the wires: Black to Black, White to White, Ground to Ground. Secure the connection with wire nuts. Choose preferred color temperature by adjusting the switch position. Put the waterproof gasket on each fixture screw. Place the wall sconce on the mounting plate and fix it using four fixture screws.
3. For outdoor locations please use silicone (not included) shown in the picture below.



For most up-to-date spec sheets please refer to asd-lighting.com

ASD LIGHTING CORP

E-mail: orders@asd-lighting.com | Web site: www.asd-lighting.com

