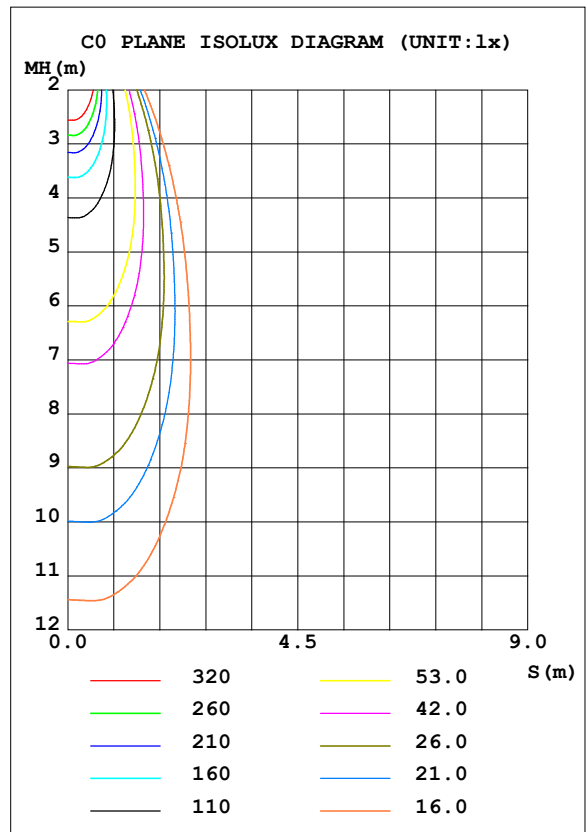
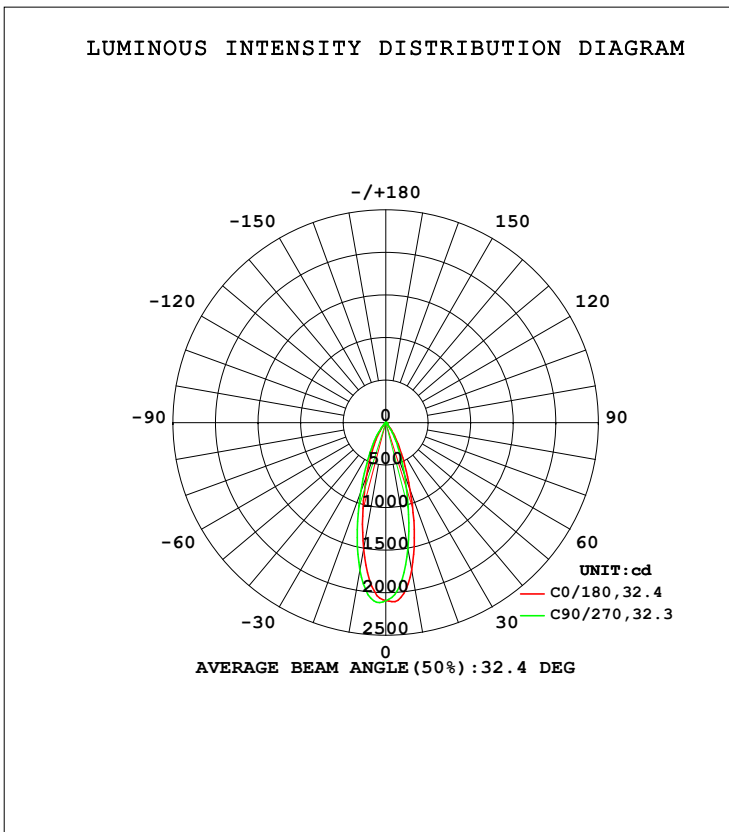


LUMINAIRE PHOTOMETRIC TEST REPORT

Test:U:120.06V I:0.1216A P:11.198W PF:0.9227 Freq:59.98Hz Lamp Flux:840.7x1 lm		
NAME: ASD-CD-TR-3D12AC-WH	TYPE:	WEIGHT:
SPEC.:3500K 90	DIM.:	SERIAL No.:
MFR.: ASD Lighting Corp	SUR.:	Shielding Angle:

DATA OF LAMP		PHOTOMETRIC DATA Eff: 75.08 lm/W			
MODEL		I _{max} (cd)	2119	S/MH (C0/180)	0.49
NOMINAL POWER (W)	12	LOR (%)	100.0	S/MH (C90/270)	0.58
RATED VOLTAGE (V)	120	TOTAL FLUX (lm)	840.70	<input type="checkbox"/> UP, DN (C0-180)	0.0, 46.7
NOMINAL FLUX (lm)	840.7	CIE CLASS	DIRECT	<input type="checkbox"/> UP, DN (C180-360)	0.0, 53.3
LAMPS INSIDE	1	<input type="checkbox"/> up (%)	0.0	CIBSE SHR NOM	0.50
TEST VOLTAGE (V)	12	<input type="checkbox"/> down (%)	100.0	CIBSE SHR MAX	0.55



C Range: 0 - 360DEG
 C Interval: 22.5DEG
 Test Speed: HIGH
 Temperature: 25.3DEG
 Operators:
 Test Date: 2021-08-24

Range: 0 - 90DEG
 Interval: 1.0DEG
 Test System: EVERFINE GO-SPEX500_V1 SYSTEM V2.00.421
 Humidity: 65.0%
 Test Distance: 3.080m [K=1.0000]
 Remarks:

ZONAL FLUX DIAGRAM

ZONAL FLUX DIAGRAM:

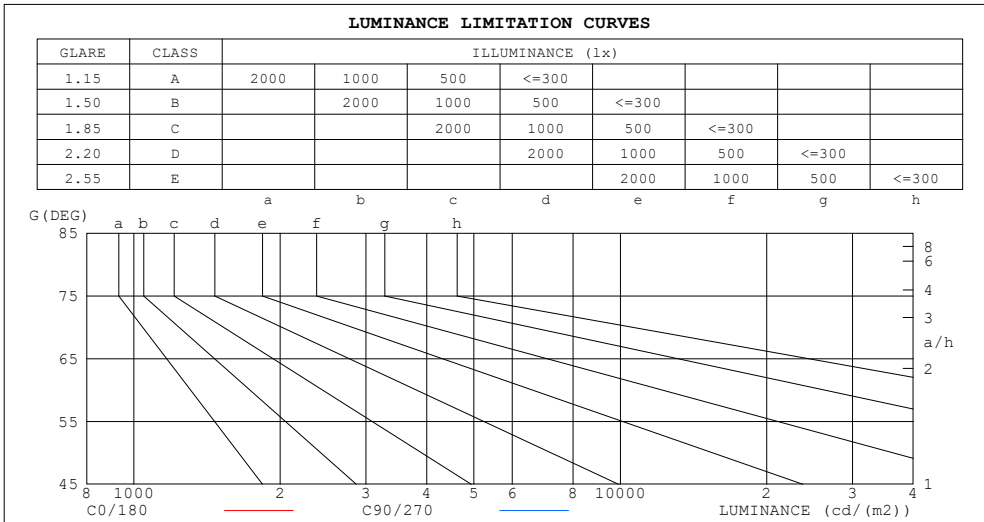
°	C0	C45	C90	C135	C180	C225	C270	C315	°	□ zone	□ total	%lum, lamp
10	1758	1636	1501	1440	1509	1637	1757	1820	0- 10	178.5	178.5	21.2,21.2
20	834.4	721.9	639.6	611.1	660.4	752.7	861.8	903.2	10- 20	319.3	497.8	59.2,59.2
30	293.8	251.9	222.6	213.8	236.9	279.5	318.3	328.9	20- 30	212.8	710.6	84.5,84.5
40	74.17	55.28	42.56	40.30	50.36	64.77	81.90	83.78	30- 40	91.70	802.3	95.4,95.4
50	15.12	13.10	13.05	12.91	12.79	14.12	14.68	16.23	40- 50	21.80	824.1	98,98
60	8.970	8.329	7.836	7.815	7.892	8.791	7.799	8.786	50- 60	9.759	833.9	99.2,99.2
70	3.831	3.072	2.342	2.602	3.029	3.120	2.786	3.457	60- 70	5.210	839.1	99.8,99.8
80	0.7035	0.5261	0.4491	0.4516	0.5510	0.4619	0.4251	0.5269	70- 80	1.432	840.5	100,100
90	0.0137	0.0073	0.0227	0.0107	0.0143	0.0090	0.0150	0.0057	80- 90	0.1830	840.7	100,100
100									90-100			
110									100-110			
120									110-120			
130									120-130			
140									130-140			
150									140-150			
160									150-160			
170									160-170			
180									170-180			
DEG	LUMINOUS INTENSITY:cd									UNIT:lm		

C Range: 0 - 360DEG
 C Interval: 22.5DEG
 Test Speed: HIGH
 Temperature:25.3DEG
 Operators:
 Test Date:2021-08-24

□ Range: 0 - 90DEG
 □ Interval: 1.0DEG
 Test System:EVERFINE GO-SPEX500_V1 SYSTEM V2.00.421
 Humidity:65.0%
 Test Distance:3.080m [K=1.0000]
 Remarks:

LUMINANCE LIMITATION CURVES

Test:U:120.06V I:0.1216A P:11.198W PF:0.9227 Freq:59.98Hz Lamp Flux:840.7x1 lm		
NAME: ASD-CD-TR-3D12AC-WH	TYPE:	WEIGHT:
SPEC.:3500K 90	DIM.:	SERIAL No.:
MFR.: ASD Lighting Corp	SUR.:	Shielding Angle:



LUMINANCE cd/(m2)		
G (DEG)	C0/180	C90/270
85	14	9
80	36	23
75	59	32
70	101	62
65	127	93
60	162	141
55	176	171
50	212	183
45	353	239

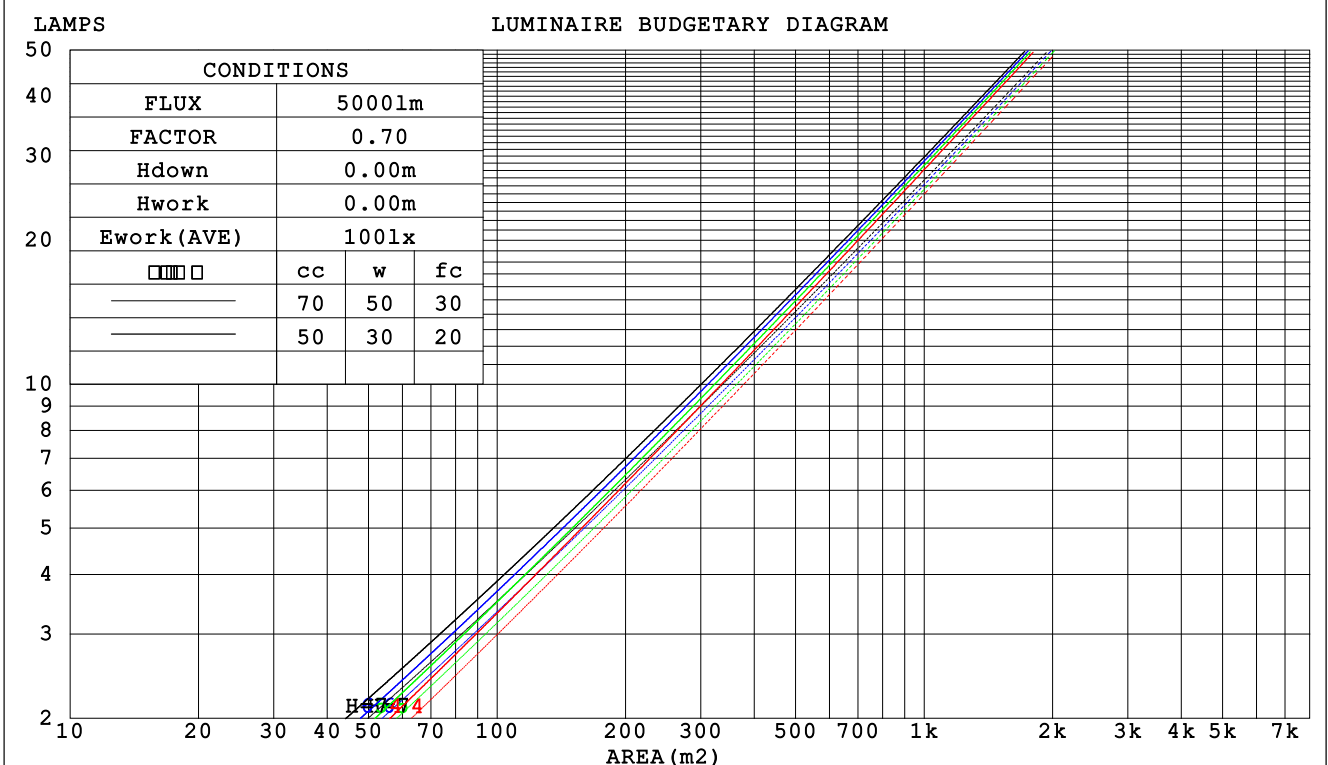
C Range: 0 - 360DEG
 C Interval: 22.5DEG
 Test Speed: HIGH
 Temperature:25.3DEG
 Operators:
 Test Date:2021-08-24

Range: 0 - 90DEG
 Interval: 1.0DEG
 Test System:EVERFINE GO-SPEX500_V1 SYSTEM V2.00.421
 Humidity:65.0%
 Test Distance:3.080m [K=1.0000]
 Remarks:

CU AND LUMINAIRE BUDGETARY ESTIMATE DIAGRAM

Test:U:120.06V I:0.1216A P:11.198W PF:0.9227 Freq:59.98Hz Lamp Flux:840.7x1 lm		
NAME: ASD-CD-TR-3D12AC-WH	TYPE:	WEIGHT:
SPEC.:3500K 90	DIM.:	SERIAL No.:
MFR.: ASD Lighting Corp	SUR.:	Shielding Angle:

□cc	80%			70%			50%			30%			10%			0
□w	50%	30%	10%	50%	30%	10%	50%	30%	10%	50%	30%	10%	50%	30%	10%	0
□fc	20%			20%			20%			20%			20%			0
RCR	RCR:Room Cavity Ratio						Coefficients of Utilization(CU)									
0.0	1.19	1.19	1.19	1.16	1.16	1.16	1.11	1.11	1.11	1.06	1.06	1.06	1.02	1.02	1.02	.00
1.0	1.12	1.10	1.08	1.10	1.08	1.06	1.06	1.04	1.03	1.02	1.01	.00	.98	.98	.97	.95
2.0	1.05	1.02	.99	1.03	1.00	.98	1.00	.98	.95	.97	.95	.93	.95	.93	.91	.90
3.0	.99	.95	.92	.98	.94	.91	.95	.92	.89	.93	.90	.88	.91	.89	.87	.85
4.0	.94	.89	.86	.93	.89	.85	.91	.87	.84	.89	.86	.83	.87	.85	.82	.81
5.0	.89	.84	.81	.89	.84	.80	.87	.83	.80	.85	.82	.79	.84	.81	.78	.77
6.0	.85	.80	.76	.84	.80	.76	.83	.79	.76	.82	.78	.75	.80	.77	.75	.73
7.0	.81	.76	.73	.81	.76	.72	.80	.75	.72	.78	.75	.72	.77	.74	.71	.70
8.0	.78	.73	.69	.77	.72	.69	.76	.72	.69	.75	.71	.69	.74	.71	.68	.67
9.0	.75	.70	.66	.74	.69	.66	.73	.69	.66	.72	.69	.66	.72	.68	.65	.64
10.0	.72	.67	.63	.71	.67	.63	.70	.66	.63	.70	.66	.63	.69	.65	.63	.62



C Range: 0 - 360DEG
 C Interval: 22.5DEG
 Test Speed: HIGH
 Temperature:25.3DEG
 Operators:
 Test Date:2021-08-24

□ Range: 0 - 90DEG
 □ Interval: 1.0DEG
 Test System:EVERFINE GO-SPEX500_V1 SYSTEM V2.00.421
 Humidity:65.0%
 Test Distance:3.080m [K=1.0000]
 Remarks:

WEC AND CCEC

Test:U:120.06V I:0.1216A P:11.198W PF:0.9227 Freq:59.98Hz Lamp Flux:840.7x1 lm		
NAME: ASD-CD-TR-3D12AC-WH	TYPE:	WEIGHT:
SPEC.:3500K 90	DIM.:	SERIAL No.:
MFR.: ASD Lighting Corp	SUR.:	Shielding Angle:

<input type="checkbox"/> cc	80%	70%	50%	30%	10%	0
<input type="checkbox"/> w	50% 30% 10%	50% 30% 10%	50% 30% 10%	50% 30% 10%	50% 30% 10%	0
<input type="checkbox"/> fc	20%	20%	20%	20%	20%	0
RCR	RCR:Room Cavity Ratio		Wall Exitance Coefficients (WEC)			
0.0						
1.0	.159 .091 .029	.153 .087 .028	.140 .080 .026	.129 .074 .024	.118 .068 .022	
2.0	.150 .082 .025	.145 .080 .025	.134 .075 .023	.125 .070 .022	.116 .066 .021	
3.0	.142 .076 .023	.137 .074 .022	.128 .070 .021	.120 .066 .020	.113 .062 .019	
4.0	.134 .070 .021	.130 .068 .020	.123 .065 .019	.116 .062 .019	.109 .059 .018	
5.0	.127 .065 .019	.124 .064 .019	.117 .061 .018	.111 .059 .017	.106 .056 .017	
6.0	.121 .061 .017	.118 .060 .017	.112 .058 .017	.107 .056 .016	.102 .054 .016	
7.0	.115 .057 .016	.113 .056 .016	.108 .055 .016	.103 .053 .015	.099 .051 .015	
8.0	.110 .054 .015	.108 .053 .015	.104 .052 .015	.099 .050 .015	.096 .049 .014	
9.0	.106 .051 .014	.104 .050 .014	.100 .049 .014	.096 .048 .014	.092 .047 .014	
10.0	.101 .049 .013	.099 .048 .013	.096 .047 .013	.093 .046 .013	.089 .045 .013	

<input type="checkbox"/> cc	80%	70%	50%	30%	10%	0
<input type="checkbox"/> w	50% 30% 10%	50% 30% 10%	50% 30% 10%	50% 30% 10%	50% 30% 10%	0
<input type="checkbox"/> fc	20%	20%	20%	20%	20%	0
RCR	RCR:Room Cavity Ratio		Ceiling Cavity Exitance Coefficients (CCEC)			
0.0	.190 .190 .190	.163 .163 .163	.111 .111 .111	.064 .064 .064	.020 .020 .020	
1.0	.170 .157 .146	.145 .135 .126	.099 .093 .087	.057 .054 .051	.018 .017 .016	
2.0	.153 .133 .115	.131 .114 .100	.090 .079 .069	.052 .046 .041	.017 .015 .013	
3.0	.140 .113 .092	.120 .098 .080	.082 .068 .056	.048 .040 .033	.015 .013 .011	
4.0	.129 .098 .075	.110 .085 .066	.076 .059 .046	.044 .035 .027	.014 .011 .009	
5.0	.119 .086 .062	.102 .075 .054	.070 .052 .038	.041 .031 .023	.013 .010 .008	
6.0	.111 .077 .052	.095 .067 .046	.066 .047 .032	.038 .027 .019	.012 .009 .006	
7.0	.104 .069 .045	.089 .060 .039	.062 .042 .028	.036 .025 .016	.012 .008 .005	
8.0	.098 .063 .038	.084 .054 .033	.058 .038 .024	.034 .022 .014	.011 .007 .005	
9.0	.093 .057 .033	.080 .050 .029	.055 .035 .021	.032 .021 .012	.010 .007 .004	
10.0	.088 .053 .029	.076 .046 .025	.053 .032 .018	.031 .019 .011	.010 .006 .004	

C Range: 0 - 360DEG
 C Interval: 22.5DEG
 Test Speed: HIGH
 Temperature:25.3DEG
 Operators:
 Test Date:2021-08-24

Range: 0 - 90DEG
 Interval: 1.0DEG
 Test System:EVERFINE GO-SPEX500_V1 SYSTEM V2.00.421
 Humidity:65.0%
 Test Distance:3.080m [K=1.0000]
 Remarks:

UGR(Unified Glare Rating) Table

Test:U:120.06V I:0.1216A P:11.198W PF:0.9227 Freq:59.98Hz Lamp Flux:840.7x1 lm										
NAME: ASD-CD-TR-3D12AC-WH					TYPE:			WEIGHT:		
SPEC.:3500K 90					DIM.:			SERIAL No.:		
MFR.: ASD Lighting Corp					SUR.:			Shielding Angle:		
ceiling/cavity	0.7	0.7	0.5	0.5	0.3	0.7	0.7	0.5	0.5	0.3
walls	0.5	0.3	0.5	0.3	0.3	0.5	0.3	0.5	0.3	0.3
working plane	0.2	0.2	0.2	0.2	0.2	0.2	0.2	0.2	0.2	0.2
Room dimensions	Viewed crosswise					Viewed endwise				
x = 2H y = 2H	4.3	5.1	4.5	5.2	5.4	2.8	3.6	3.0	3.7	3.9
3H	4.3	5.0	4.5	5.2	5.4	2.7	3.5	3.0	3.7	3.9
4H	4.3	5.0	4.5	5.2	5.4	2.7	3.4	2.9	3.6	3.8
6H	4.2	4.9	4.5	5.1	5.3	2.6	3.3	2.9	3.5	3.7
8H	4.1	4.8	4.4	5.0	5.3	2.6	3.2	2.9	3.5	3.7
12H	4.1	4.7	4.4	5.0	5.3	2.5	3.1	2.8	3.4	3.7
4H 2H	4.1	4.8	4.4	5.1	5.3	2.7	3.4	2.9	3.6	3.8
3H	4.2	4.8	4.5	5.1	5.3	2.7	3.3	3.0	3.6	3.9
4H	4.2	4.7	4.5	5.0	5.3	2.6	3.2	3.0	3.5	3.8
6H	4.1	4.6	4.5	4.9	5.3	2.6	3.1	2.9	3.4	3.7
8H	4.0	4.5	4.4	4.9	5.2	2.5	3.0	2.9	3.3	3.7
12H	4.0	4.4	4.4	4.8	5.2	2.5	2.9	2.9	3.2	3.6
8H 4H	4.0	4.5	4.4	4.8	5.2	2.5	3.0	2.9	3.3	3.7
6H	4.0	4.3	4.4	4.7	5.1	2.4	2.8	2.9	3.2	3.6
8H	3.9	4.3	4.4	4.7	5.1	2.4	2.7	2.8	3.1	3.6
12H	3.9	4.2	4.3	4.6	5.1	2.3	2.6	2.8	3.1	3.5
12H 4H	4.0	4.4	4.4	4.8	5.2	2.5	2.9	2.9	3.3	3.6
6H	3.9	4.2	4.4	4.7	5.1	2.4	2.7	2.8	3.1	3.6
8H	3.9	4.1	4.3	4.6	5.1	2.3	2.6	2.8	3.1	3.5
Variations with the observer position at spacings:										
S = 1.0H	+ 3.3 / - 4.3					+ 2.4 / - 3.3				
1.5H	+ 5.5 / - 3.8					+ 4.4 / - 2.6				
2.0H	+ 2.9 / - 1.4					+ 1.5 / - 1.8				

CIE Pub.117, 840.7 lm Total Lamp Luminous Flux Correct (8log(F/F0) = -0.6)
 Area: 0.111111 m2

C Range: 0 - 360DEG
 C Interval: 22.5DEG
 Test Speed: HIGH
 Temperature:25.3DEG
 Operators:
 Test Date:2021-08-24

Range: 0 - 90DEG
 Interval: 1.0DEG
 Test System:EVERFINE GO-SPEX500_V1 SYSTEM V2.00.421
 Humidity:65.0%
 Test Distance:3.080m [K=1.0000]
 Remarks:

UTILIZATION FACTORS TABLE

Test:U:120.06V I:0.1216A P:11.198W PF:0.9227 Freq:59.98Hz Lamp Flux:840.7x1 lm		
NAME: ASD-CD-TR-3D12AC-WH	TYPE:	WEIGHT:
SPEC.:3500K 90	DIM.:	SERIAL No.:
MFR.: ASD Lighting Corp	SUR.:	Shielding Angle:

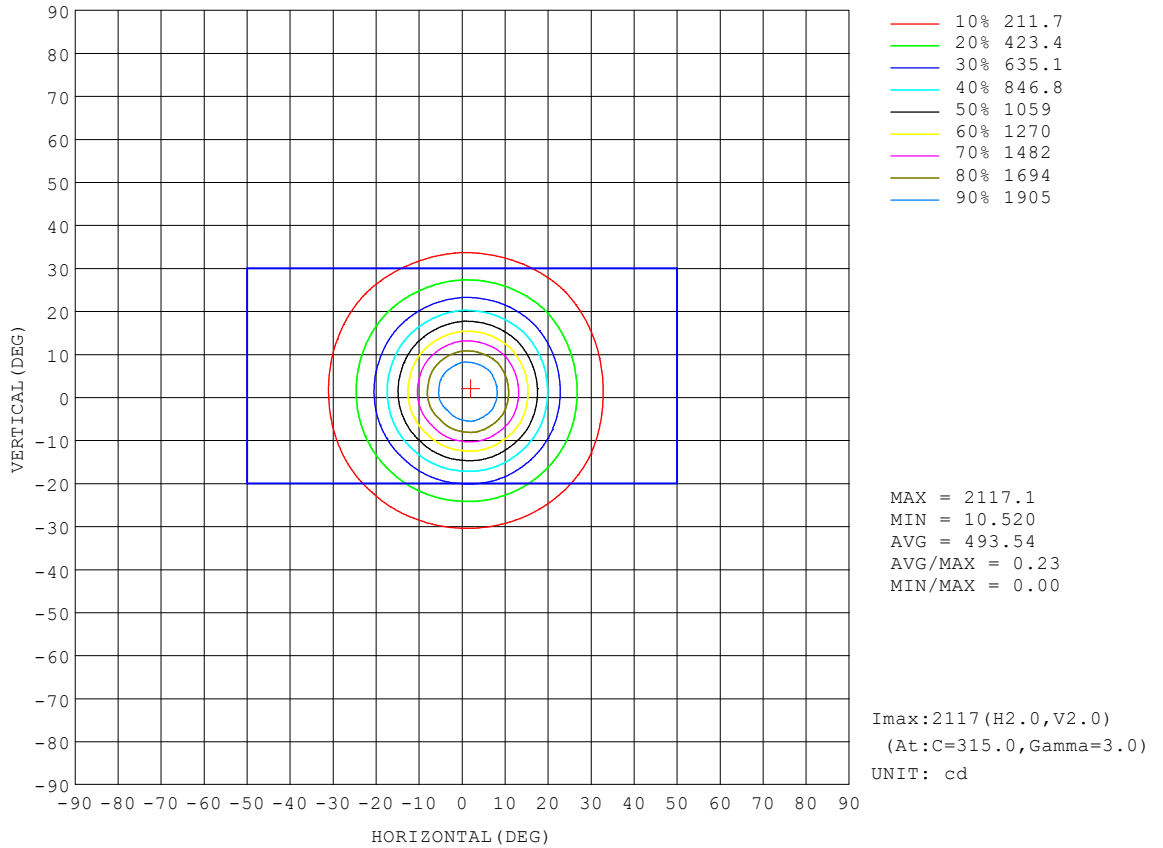
REFLECTANCE										
Ceiling	0.8	0.8	0.8	0.7	0.7	0.7	0.5	0.5	0.5	0
Walls	0.7	0.5	0.3	0.7	0.5	0.3	0.7	0.5	0.3	0
Working plane	0.2	0.2	0.2	0.2	0.2	0.2	0.2	0.2	0.2	0
ROOM INDEX	UTILIZATION FACTORS (PERCENT) $k(RI) \times RCR = 5$									
k = 0.60	89	83	79	88	82	79	87	82	79	75
0.80	96	90	87	95	90	87	94	89	86	83
1.00	100	95	91	99	94	91	98	94	90	87
1.25	104	99	96	103	98	95	101	97	94	90
1.50	107	102	99	105	101	98	103	100	97	93
2.00	109	105	102	108	104	101	105	102	100	95
2.50	111	107	104	109	106	103	106	103	101	95
3.00	112	109	106	110	107	105	107	105	103	97
4.00	114	111	109	112	110	108	108	107	105	98
5.00	115	113	111	113	111	110	109	108	107	99
ROOM INDEX	UF(total)									Direct
According to DIN EN 13032-2 2004			Suspended				SHRNOM = 1.25			

C Range: 0 - 360DEG
 C Interval: 22.5DEG
 Test Speed: HIGH
 Temperature:25.3DEG
 Operators:
 Test Date:2021-08-24

Range: 0 - 90DEG
 Interval: 1.0DEG
 Test System:EVERFINE GO-SPEX500_V1 SYSTEM V2.00.421
 Humidity:65.0%
 Test Distance:3.080m [K=1.0000]
 Remarks:

ISOCANDELA DIAGRAM

Test:U:120.06V I:0.1216A P:11.198W PF:0.9227 Freq:59.98Hz Lamp Flux:840.7x1 lm		
NAME: ASD-CD-TR-3D12AC-WH	TYPE:	WEIGHT:
SPEC.:3500K 90	DIM.:	SERIAL No.:
MFR.: ASD Lighting Corp	SUR.:	Shielding Angle:

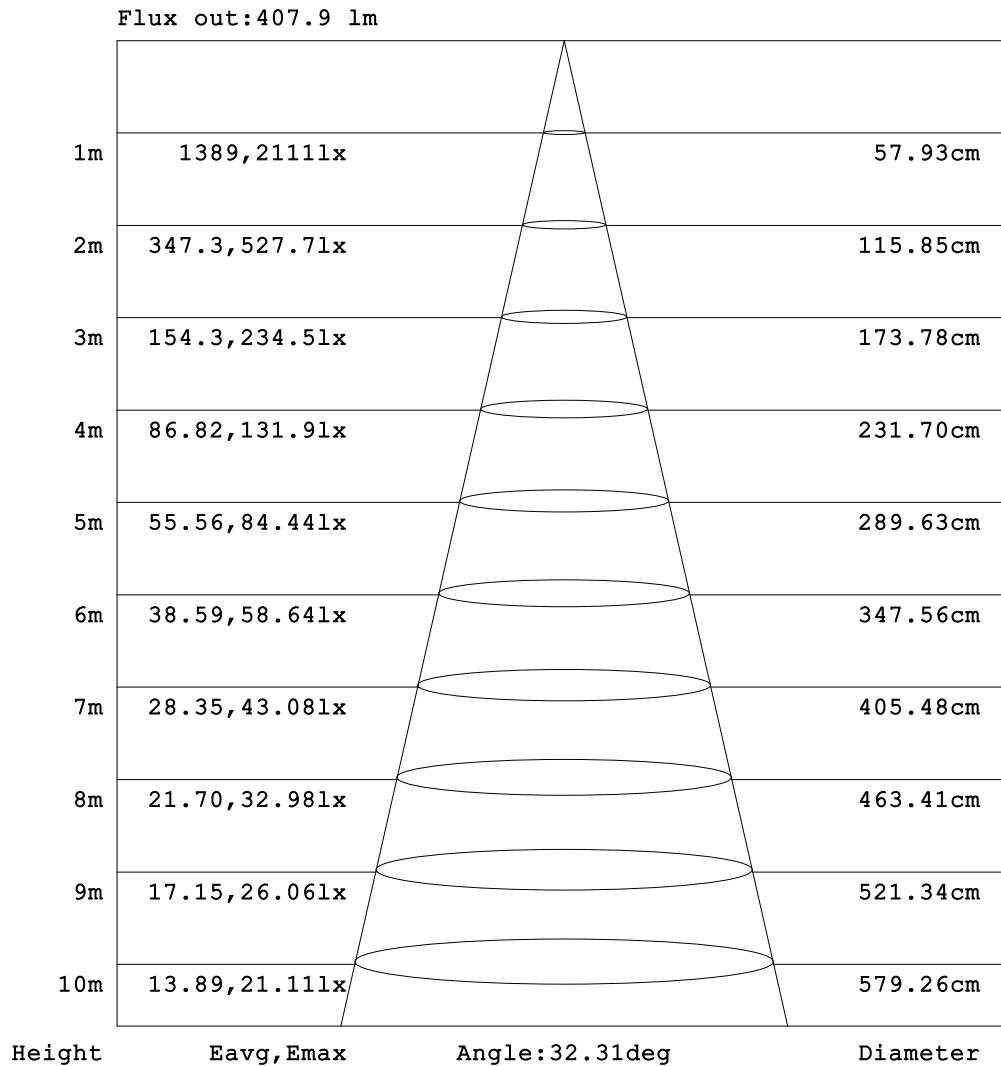


C Range: 0 - 360DEG
 C Interval: 22.5DEG
 Test Speed: HIGH
 Temperature:25.3DEG
 Operators:
 Test Date:2021-08-24

Range: 0 - 90DEG
 Interval: 1.0DEG
 Test System:EVERFINE GO-SPEX500_V1 SYSTEM V2.00.421
 Humidity:65.0%
 Test Distance:3.080m [K=1.0000]
 Remarks:

AAI Figure

Test:U:120.06V I:0.1216A P:11.198W PF:0.9227 Freq:59.98Hz Lamp Flux:840.7x1 lm		
NAME: ASD-CD-TR-3D12AC-WH	TYPE:	WEIGHT:
SPEC.:3500K 90	DIM.:	SERIAL No.:
MFR.: ASD Lighting Corp	SUR.:	Shielding Angle:



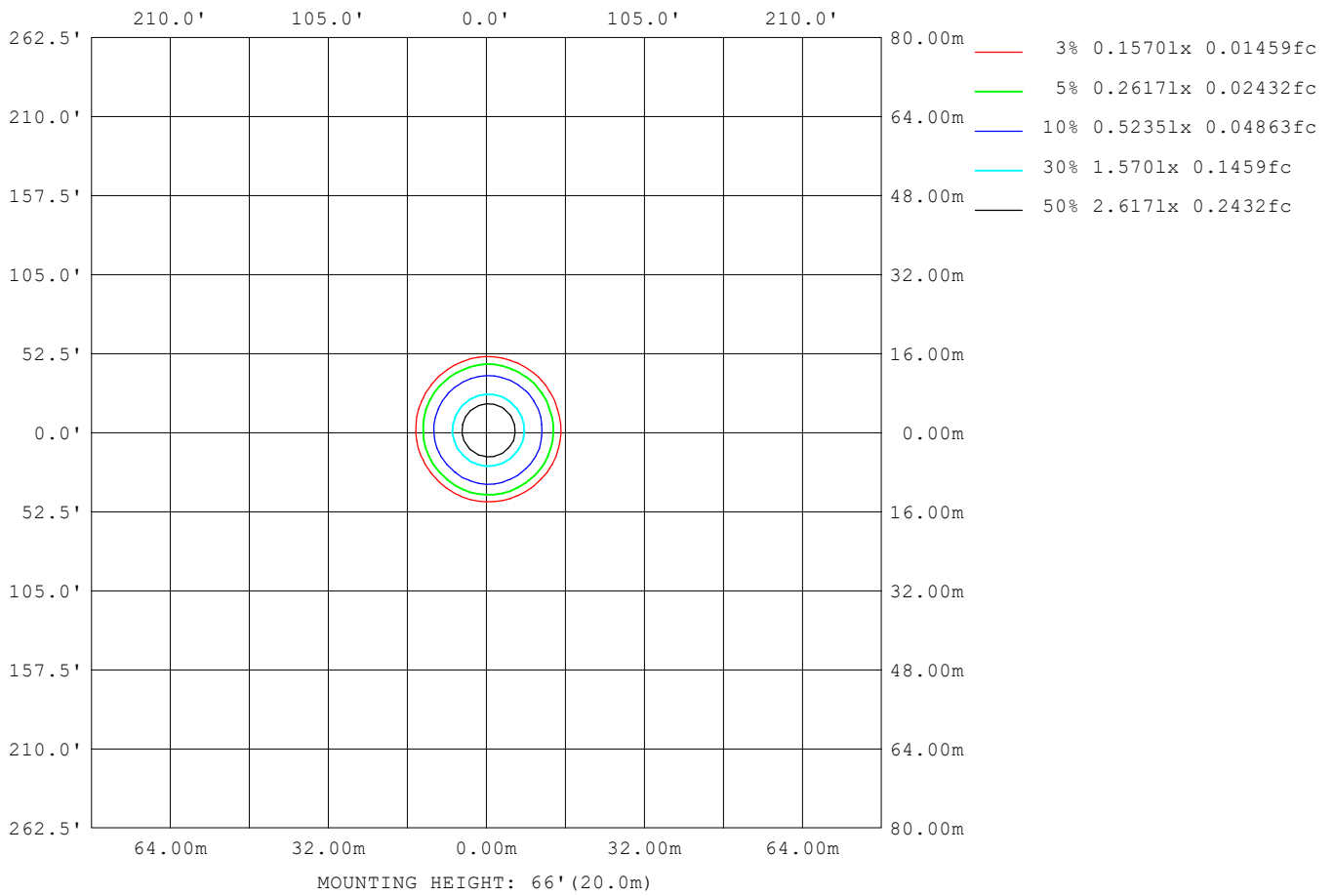
Note:The Curves indicate the illuminated area and the average illumination when the luminaire is at different distance.

C Range: 0 - 360DEG
 C Interval: 22.5DEG
 Test Speed: HIGH
 Temperature:25.3DEG
 Operators:
 Test Date:2021-08-24

Range: 0 - 90DEG
 Interval: 1.0DEG
 Test System:EVERFINE GO-SPEX500_V1 SYSTEM V2.00.421
 Humidity:65.0%
 Test Distance:3.080m [K=1.0000]
 Remarks:

ISOLUX DIAGRAM

Test:U:120.06V I:0.1216A P:11.198W PF:0.9227 Freq:59.98Hz Lamp Flux:840.7x1 lm		
NAME: ASD-CD-TR-3D12AC-WH	TYPE:	WEIGHT:
SPEC.:3500K 90	DIM.:	SERIAL No.:
MFR.: ASD Lighting Corp	SUR.:	Shielding Angle:



C Range: 0 - 360DEG
 C Interval: 22.5DEG
 Test Speed: HIGH
 Temperature:25.3DEG
 Operators:
 Test Date:2021-08-24

Range: 0 - 90DEG
 Interval: 1.0DEG
 Test System:EVERFINE GO-SPEX500_V1 SYSTEM V2.00.421
 Humidity:65.0%
 Test Distance:3.080m [K=1.0000]
 Remarks:

LED Avg.L Report

Test:U:120.06V I:0.1216A P:11.198W PF:0.9227 Freq:59.98Hz Lamp Flux:840.7x1 lm		
NAME: ASD-CD-TR-3D12AC-WH	TYPE:	WEIGHT:
SPEC.:3500K 90	DIM.:	SERIAL No.:
MFR.: ASD Lighting Corp	SUR.:	Shielding Angle:

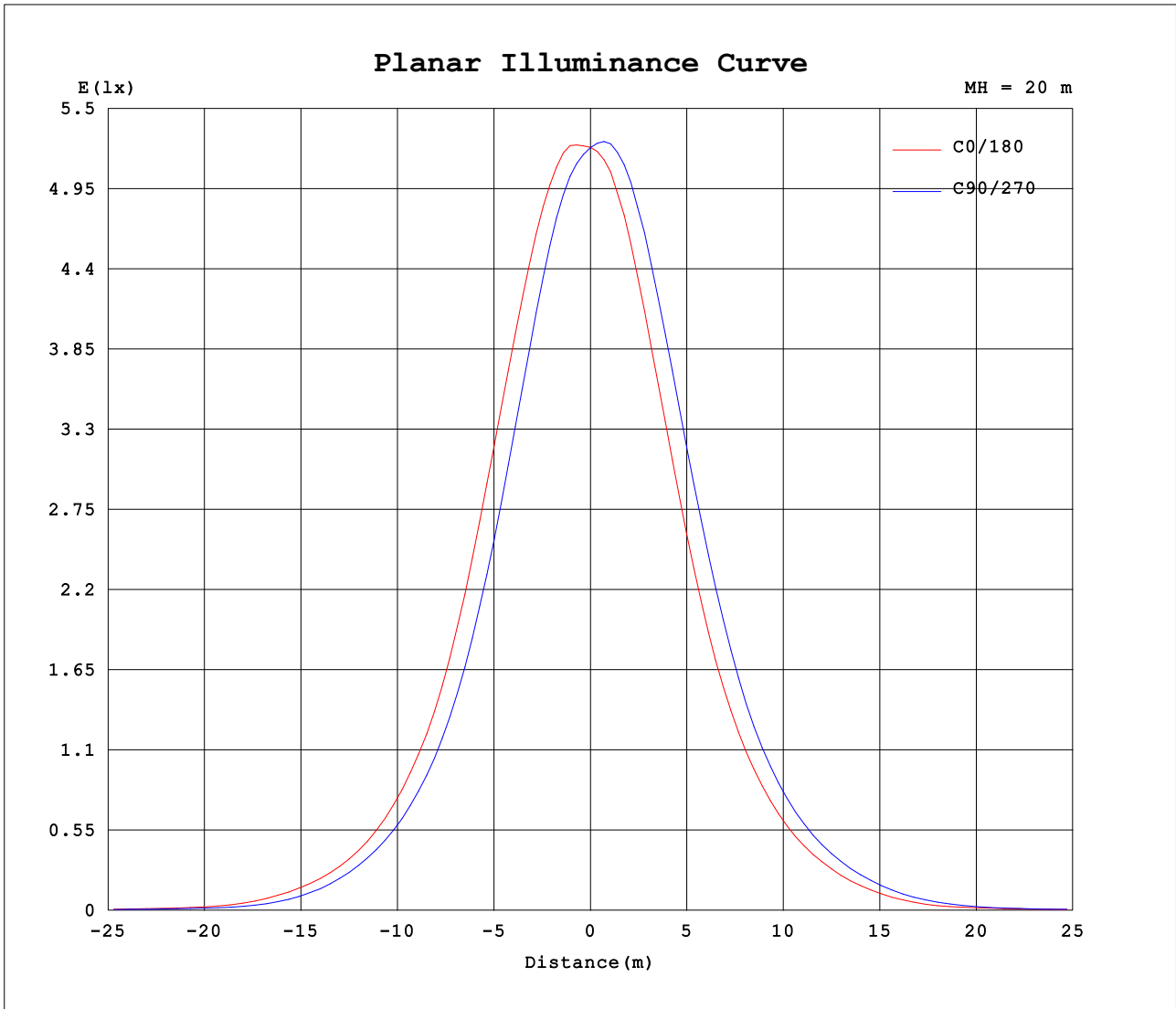
AvgL	cd/m2
L_0~180 (65) av	115
L_0~180 (75) av	47
L_0~180 (85) av	12
L_90~270 (65) av	98
L_90~270 (75) av	31
L_90~270 (85) av	8
L_45 (65) av	111
L_45 (75) av	35
L_45 (85) av	11

Standard: GB/T 29293-2012

C Range: 0 - 360DEG
 C Interval: 22.5DEG
 Test Speed: HIGH
 Temperature:25.3DEG
 Operators:
 Test Date:2021-08-24

Range: 0 - 90DEG
 Interval: 1.0DEG
 Test System:EVERFINE GO-SPEX500_V1 SYSTEM V2.00.421
 Humidity:65.0%
 Test Distance:3.080m [K=1.0000]
 Remarks:

Planar Illuminance Curve



C Range: 0 - 360DEG
 C Interval: 22.5DEG
 Test Speed: HIGH
 Temperature: 25.3DEG
 Operators:
 Test Date: 2021-08-24

Range: 0 - 90DEG
 Interval: 1.0DEG
 Test System: EVERFINE GO-SPEX500_V1 SYSTEM V2.00.421
 Humidity: 65.0%
 Test Distance: 3.080m [K=1.0000]
 Remarks:

LUMINOUS DISTRIBUTION INTENSITY DATA

Test:U:120.06V I:0.1216A P:11.198W PF:0.9227 Freq:59.98Hz Lamp Flux:840.7x1 lm		
NAME: ASD-CD-TR-3D12AC-WH	TYPE:	WEIGHT:
SPEC.:3500K 90	DIM.:	SERIAL No.:
MFR.: ASD Lighting Corp	SUR.:	Shielding Angle:

Table--1

UNIT: cd

C (DEG) \ □ (DEG)	0	22.5	45	67.5	90	112.5	135	157.5	180	202.5	225	247.5	270	292.5	315	337.5			
0	2093	2093	2093	2093	2093	2093	2093	2093	2093	2093	2093	2093	2093	2093	2093	2093			
5	2062	2036	1995	1961	1923	1894	1873	1900	1929	1959	2003	2039	2070	2084	2095	2080			
10	1758	1717	1636	1570	1501	1465	1440	1472	1509	1558	1637	1693	1757	1790	1820	1794			
15	1300	1245	1151	1085	1024	994	977	1003	1043	1091	1168	1231	1300	1339	1367	1339			
20	834	784	722	681	640	622	611	632	660	696	753	803	862	886	903	876			
25	508	476	437	408	387	375	372	386	405	430	466	497	532	550	557	532			
30	294	279	252	235	223	214	214	226	237	258	279	295	318	325	329	312			
35	160	151	134	121	109	107	105	112	124	136	153	164	179	179	182	169			
40	74.2	65.2	55.3	47.6	42.6	41.5	40.3	43.5	50.4	55.3	64.8	75.3	81.9	86.5	83.8	76.5			
45	27.7	25.2	21.9	20.4	18.8	19.6	19.0	19.7	21.4	22.3	24.4	26.3	30.3	31.5	30.8	28.4			
50	15.1	14.3	13.1	12.6	13.1	12.5	12.9	13.0	12.8	13.5	14.1	14.0	14.7	14.8	16.2	15.7			
55	11.2	11.5	10.9	10.6	10.9	10.5	10.6	10.5	10.5	11.1	11.5	11.1	11.1	11.0	11.2	11.2			
60	8.97	8.93	8.33	7.65	7.84	7.56	7.81	7.81	7.89	8.49	8.79	7.70	7.80	7.61	8.79	8.84			
65	5.96	5.65	5.16	4.43	4.36	4.21	4.42	4.57	4.83	5.53	5.56	4.85	4.87	4.86	5.67	6.03			
70	3.83	3.52	3.07	2.66	2.34	2.40	2.60	2.85	3.03	3.38	3.12	2.86	2.79	3.00	3.46	3.86			
75	1.71	1.48	1.05	0.96	0.91	0.90	0.89	0.95	1.01	1.01	0.94	0.89	0.89	0.93	1.15	1.75			
80	0.70	0.64	0.53	0.47	0.45	0.44	0.45	0.51	0.55	0.51	0.46	0.43	0.43	0.45	0.53	0.62			
85	0.14	0.22	0.12	0.09	0.09	0.08	0.10	0.15	0.10	0.15	0.10	0.08	0.08	0.09	0.12	0.21			
90	0.01	0.01	0.01	0.01	0.02	0.02	0.01	0.01	0.01	0.01	0.01	0.01	0.02	0.01	0.01	0.01			

C Range: 0 - 360DEG
 C Interval: 22.5DEG
 Test Speed: HIGH
 Temperature:25.3DEG
 Operators:
 Test Date:2021-08-24

□ Range: 0 - 90DEG
 □ Interval: 1.0DEG
 Test System:EVERFINE GO-SPEX500_V1 SYSTEM V2.00.421
 Humidity:65.0%
 Test Distance:3.080m [K=1.0000]
 Remarks: