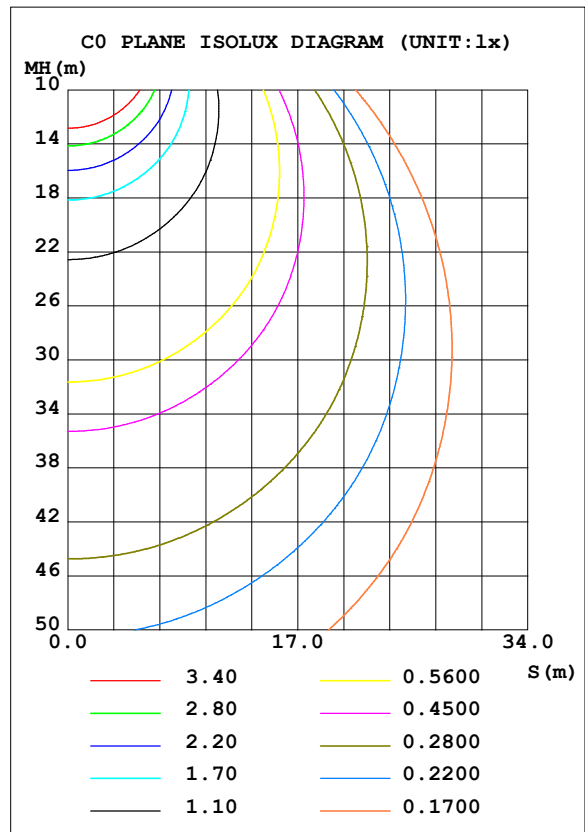
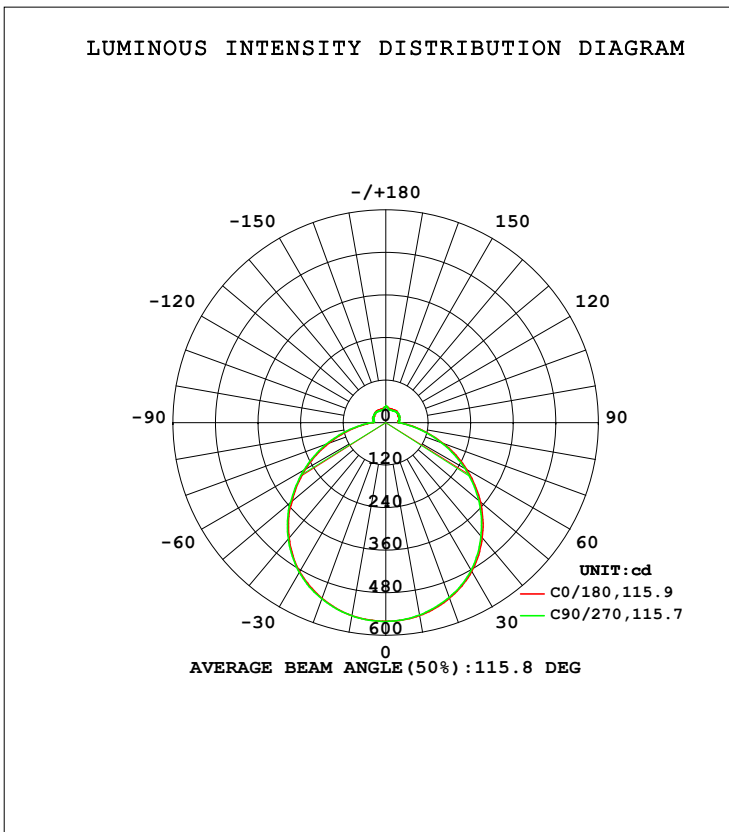


LUMINAIRE PHOTOMETRIC TEST REPORT

Test:U:119.75V I:0.3848A P:41.672W PF:0.9031 Freq:0Hz Lamp Flux:1957.73x1 lm		
NAME: ADS lighting Corp	TYPE:	WEIGHT:
SPEC.:ASD-LFC-WD-20D42-AC-3500K	DIM.:	SERIAL No.:
MFR.: ADS lighting Corp	SUR.:0.49*0.49	Shielding Angle:

DATA OF LAMP		PHOTOMETRIC DATA			
MODEL	ASD-LFC-WD-20D42-AC	Imax (cd)	560.9	S/MH (C0/180)	1.29
NOMINAL POWER (W)	--	LOR (%)	100.0	S/MH (C90/270)	1.29
RATED VOLTAGE (V)	--	TOTAL FLUX (lm)	1957.7	<input type="checkbox"/> UP, DN (C0-180)	6.3, 43.4
NOMINAL FLUX (lm)	1957.73	CIE CLASS	SEMI-D.	<input type="checkbox"/> UP, DN (C180-360)	6.0, 44.2
LAMPS INSIDE	1	<input type="checkbox"/> up (%)	12.3	CIBSE SHR NOM	1.25
TEST VOLTAGE (V)	--	<input type="checkbox"/> down (%)	87.7	CIBSE SHR MAX	1.35



C Range: 0 - 360DEG
 C Interval: 22.5DEG
 Test Speed: HIGH
 Temperature: 25.3DEG
 Operators: admin
 Test Date: 2022-03-16

Range: 0 - 180DEG
 Interval: 1.0DEG
 Test System: EVERFINE GO-2000B_V1 SYSTEM V2.00.411
 Humidity: 65.0%
 Test Distance: 8.780m [K=1.0000]
 Remarks:

ZONAL FLUX DIAGRAM

ZONAL FLUX DIAGRAM:

mm	C0	C45	C90	C135	C180	C225	C270	C315	mm	□ zone	□ total	%lum, lamp
10	552.4	551.0	550.7	550.7	552.5	552.9	553.1	552.5	0- 10	53.08	53.08	2.71,2.71
20	526.8	525.1	524.3	525.0	527.3	528.2	528.9	528.8	10- 20	152.9	206.0	10.5,10.5
30	485.1	483.2	481.6	481.9	485.5	487.8	488.4	487.6	20- 30	234.2	440.2	22.5,22.5
40	423.6	419.9	418.0	420.2	424.4	426.4	427.8	427.4	30- 40	285.5	725.7	37.1,37.1
50	348.7	343.7	342.9	343.6	344.8	350.0	351.7	350.8	40- 50	298.5	1024	52.3,52.3
60	263.4	259.0	257.4	258.9	261.2	264.7	266.2	264.7	50- 60	272.5	1297	66.2,66.2
70	172.4	169.1	167.7	168.1	172.6	177.0	178.9	176.9	60- 70	215.5	1512	77.2,77.2
80	90.57	88.64	87.67	88.04	90.50	94.07	95.74	93.72	70- 80	138.0	1650	84.3,84.3
90	37.25	37.34	37.68	37.22	37.05	37.96	38.87	37.80	80- 90	65.94	1716	87.7,87.7
100	36.86	37.82	38.68	37.38	36.23	35.71	35.97	34.92	90-100	38.62	1755	89.6,89.6
110	40.69	40.26	40.57	39.54	39.73	37.80	37.57	37.41	100-110	40.17	1795	91.7,91.7
120	40.58	41.55	42.64	41.18	39.09	39.34	39.74	39.57	110-120	39.10	1834	93.7,93.7
130	42.82	38.63	43.37	37.99	41.16	36.73	40.49	37.90	120-130	35.80	1870	95.5,95.5
140	44.10	38.00	41.70	37.79	42.20	35.80	40.46	36.75	130-140	30.46	1900	97.1,97.1
150	42.27	39.42	39.42	38.93	41.14	37.32	38.51	38.35	140-150	24.40	1925	98.3,98.3
160	41.64	38.26	38.84	38.35	40.51	36.93	38.00	37.83	150-160	18.01	1943	99.2,99.2
170	43.19	42.58	41.38	42.41	41.71	41.43	39.30	41.74	160-170	11.01	1954	99.8,99.8
180	46.63	44.13	47.08	43.86	46.61	44.09	47.10	43.83	170-180	4.073	1958	100,100
DEG	LUMINOUS INTENSITY:cd									UNIT:lm		

Conical surface Flux(90deg): 875.75 lm

%lum = 44.7%

%lamp = 44.7%

Conical surface Flux(120deg): 1296.6 lm

%lum = 66.2%

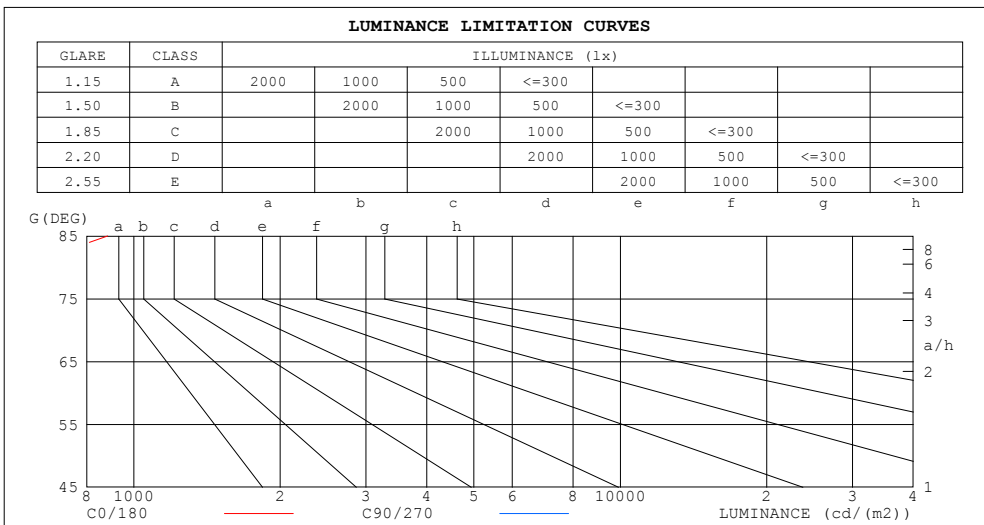
%lamp = 66.2%

C Range: 0 - 360DEG
 C Interval: 22.5DEG
 Test Speed: HIGH
 Temperature:25.3DEG
 Operators:admin
 Test Date:2022-03-16

□ Range: 0 - 180DEG
 □ Interval: 1.0DEG
 Test System:EVERFINE GO-2000B_V1 SYSTEM V2.00.411
 Humidity:65.0%
 Test Distance:8.780m [K=1.0000]
 Remarks:

LUMINANCE LIMITATION CURVES

Test:U:119.75V I:0.3848A P:41.672W PF:0.9031 Freq:0Hz Lamp Flux:1957.73x1 lm		
NAME: ADS lighting Corp	TYPE:	WEIGHT:
SPEC.:ASD-LFC-WD-20D42-AC-3500K	DIM.:	SERIAL No.:
MFR.: ADS lighting Corp	SUR.:0.49*0.49	Shielding Angle:



LUMINANCE cd/(m2)		
G (DEG)	C0/180	C90/270
85	884	858
80	692	670
75	664	645
70	668	650
65	688	668
60	699	683
55	710	696
50	719	707
45	727	716

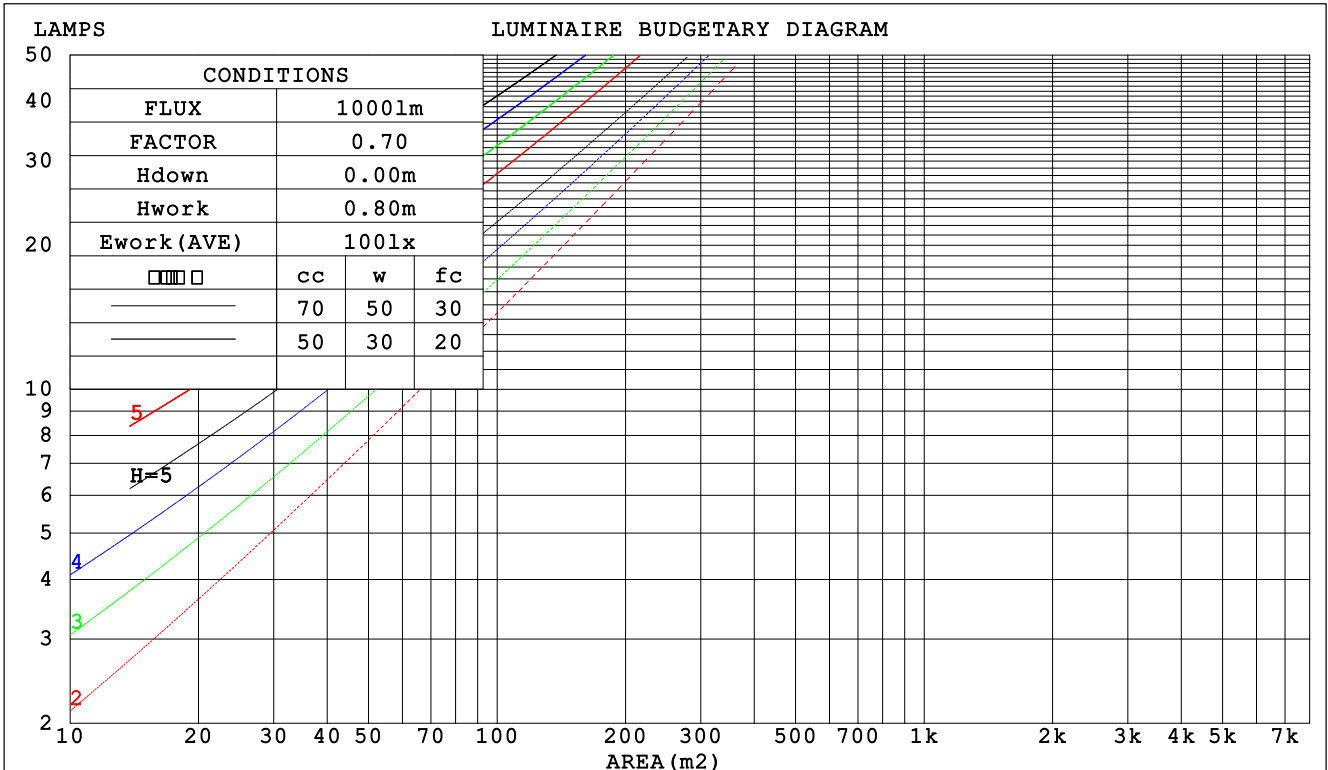
C Range: 0 - 360DEG
 C Interval: 22.5DEG
 Test Speed: HIGH
 Temperature:25.3DEG
 Operators:admin
 Test Date:2022-03-16

Range: 0 - 180DEG
 Interval: 1.0DEG
 Test System:EVERFINE GO-2000B_V1 SYSTEM V2.00.411
 Humidity:65.0%
 Test Distance:8.780m [K=1.0000]
 Remarks:

CU AND LUMINAIRE BUDGETARY ESTIMATE DIAGRAM

Test:U:119.75V I:0.3848A P:41.672W PF:0.9031 Freq:0Hz Lamp Flux:1957.73x1 lm		
NAME: ADS lighting Corp	TYPE:	WEIGHT:
SPEC.:ASD-LFC-WD-20D42-AC-3500K	DIM.:	SERIAL No.:
MFR.: ADS lighting Corp	SUR.:0.49*0.49	Shielding Angle:

□cc	80%			70%			50%			30%			10%			0
□w	50%	30%	10%	50%	30%	10%	50%	30%	10%	50%	30%	10%	50%	30%	10%	0
□fc	20%			20%			20%			20%			20%			0
RCR	RCR:Room Cavity Ratio						Coefficients of Utilization(CU)									
0.0	1.16	1.16	1.16	1.12	1.12	1.12	1.04	1.04	1.04	.97	.97	.97	.91	.91	.91	.88
1.0	1.00	.95	.91	.97	.92	.89	.90	.87	.84	.84	.81	.79	.78	.76	.74	.72
2.0	.87	.80	.74	.84	.77	.72	.78	.73	.68	.73	.69	.65	.68	.65	.62	.59
3.0	.76	.68	.61	.73	.66	.60	.69	.62	.57	.64	.59	.54	.60	.56	.52	.49
4.0	.67	.58	.51	.65	.57	.50	.61	.54	.48	.57	.51	.46	.53	.49	.44	.42
5.0	.60	.51	.44	.58	.49	.43	.54	.47	.42	.51	.45	.40	.48	.43	.39	.36
6.0	.54	.45	.38	.52	.44	.38	.49	.42	.36	.46	.40	.35	.43	.38	.34	.31
7.0	.49	.40	.34	.47	.39	.33	.44	.37	.32	.42	.36	.31	.40	.34	.30	.28
8.0	.44	.36	.30	.43	.35	.29	.41	.34	.28	.38	.32	.28	.36	.31	.27	.25
9.0	.40	.32	.27	.39	.32	.26	.37	.30	.26	.35	.29	.25	.34	.28	.24	.22
10.0	.37	.29	.24	.36	.29	.24	.34	.28	.23	.33	.27	.22	.31	.26	.22	.20



C Range: 0 - 360DEG
 C Interval: 22.5DEG
 Test Speed: HIGH
 Temperature:25.3DEG
 Operators:admin
 Test Date:2022-03-16

□ Range: 0 - 180DEG
 □ Interval: 1.0DEG
 Test System:EVERFINE GO-2000B_V1 SYSTEM V2.00.411
 Humidity:65.0%
 Test Distance:8.780m [K=1.0000]
 Remarks:

WEC AND CCEC

Test:U:119.75V I:0.3848A P:41.672W PF:0.9031 Freq:0Hz Lamp Flux:1957.73x1 lm		
NAME: ADS lighting Corp	TYPE:	WEIGHT:
SPEC.:ASD-LFC-WD-20D42-AC-3500K	DIM.:	SERIAL No.:
MFR.: ADS lighting Corp	SUR.:0.49*0.49	Shielding Angle:

<input type="checkbox"/> cc	80%	70%	50%	30%	10%	0
<input type="checkbox"/> w	50% 30% 10%	50% 30% 10%	50% 30% 10%	50% 30% 10%	50% 30% 10%	0
<input type="checkbox"/> fc	20%	20%	20%	20%	20%	0
RCR	RCR:Room Cavity Ratio		Wall Exitance Coefficients (WEC)			
0.0						
1.0	.327 .186 .059	.316 .180 .057	.295 .169 .054	.277 .160 .051	.260 .150 .048	
2.0	.299 .164 .050	.289 .159 .049	.271 .151 .047	.254 .142 .045	.238 .135 .043	
3.0	.273 .145 .044	.264 .142 .043	.248 .134 .041	.233 .127 .039	.219 .121 .037	
4.0	.250 .130 .038	.242 .127 .037	.228 .121 .036	.214 .115 .035	.201 .109 .033	
5.0	.230 .117 .034	.223 .115 .033	.210 .109 .032	.197 .104 .031	.186 .099 .030	
6.0	.213 .107 .031	.207 .104 .030	.194 .100 .029	.183 .095 .028	.172 .091 .027	
7.0	.198 .098 .028	.192 .096 .027	.181 .091 .026	.170 .087 .025	.161 .083 .025	
8.0	.184 .090 .025	.179 .088 .025	.169 .084 .024	.159 .081 .023	.150 .077 .022	
9.0	.173 .083 .023	.168 .082 .023	.158 .078 .022	.150 .075 .021	.141 .072 .021	
10.0	.162 .078 .022	.158 .076 .021	.149 .073 .021	.141 .070 .020	.133 .067 .019	

<input type="checkbox"/> cc	80%	70%	50%	30%	10%	0
<input type="checkbox"/> w	50% 30% 10%	50% 30% 10%	50% 30% 10%	50% 30% 10%	50% 30% 10%	0
<input type="checkbox"/> fc	20%	20%	20%	20%	20%	0
RCR	RCR:Room Cavity Ratio		Ceiling Cavity Exitance Coefficients (CCEC)			
0.0	.285 .285 .285	.243 .243 .243	.166 .166 .166	.095 .095 .095	.030 .030 .030	
1.0	.276 .251 .228	.236 .215 .196	.162 .148 .136	.093 .086 .079	.030 .028 .026	
2.0	.269 .227 .193	.230 .196 .167	.158 .135 .116	.091 .079 .068	.029 .025 .022	
3.0	.261 .210 .170	.224 .181 .147	.154 .126 .103	.089 .074 .061	.029 .024 .020	
4.0	.253 .197 .155	.218 .171 .134	.150 .119 .095	.087 .070 .056	.028 .023 .018	
5.0	.246 .187 .144	.211 .162 .125	.146 .113 .088	.084 .066 .052	.027 .022 .017	
6.0	.239 .179 .136	.205 .155 .119	.142 .109 .084	.082 .064 .050	.027 .021 .016	
7.0	.232 .172 .131	.200 .150 .114	.138 .105 .081	.080 .062 .048	.026 .020 .016	
8.0	.226 .167 .126	.194 .145 .110	.135 .102 .078	.078 .060 .047	.025 .020 .015	
9.0	.220 .162 .123	.189 .141 .107	.131 .099 .076	.076 .058 .045	.025 .019 .015	
10.0	.214 .158 .120	.185 .137 .105	.128 .096 .075	.075 .057 .045	.024 .019 .015	

C Range: 0 - 360DEG
 C Interval: 22.5DEG
 Test Speed: HIGH
 Temperature:25.3DEG
 Operators:admin
 Test Date:2022-03-16

Range: 0 - 180DEG
 Interval: 1.0DEG
 Test System:EVERFINE GO-2000B_V1 SYSTEM V2.00.411
 Humidity:65.0%
 Test Distance:8.780m [K=1.0000]
 Remarks:

UGR(Unified Glare Rating) Table

Test:U:119.75V I:0.3848A P:41.672W PF:0.9031 Freq:0Hz Lamp Flux:1957.73x1 lm										
NAME: ADS lighting Corp					TYPE:			WEIGHT:		
SPEC.:ASD-LFC-WD-20D42-AC-3500K					DIM.:			SERIAL No.:		
MFR.: ADS lighting Corp					SUR.:0.49*0.49			Shielding Angle:		
ceiling/cavity	0.7	0.7	0.5	0.5	0.3	0.7	0.7	0.5	0.5	0.3
walls	0.5	0.3	0.5	0.3	0.3	0.5	0.3	0.5	0.3	0.3
working plane	0.2	0.2	0.2	0.2	0.2	0.2	0.2	0.2	0.2	0.2
Room dimensions	Viewed crosswise					Viewed endwise				
x = 2H y = 2H	10.9	12.3	11.3	12.7	13.1	10.8	12.2	11.3	12.6	13.0
3H	12.5	13.8	13.0	14.2	14.7	12.4	13.7	12.9	14.1	14.6
4H	13.3	14.5	13.7	14.9	15.4	13.1	14.3	13.6	14.8	15.3
6H	13.9	15.0	14.4	15.5	16.0	13.8	14.9	14.3	15.4	15.9
8H	14.2	15.2	14.7	15.7	16.3	14.0	15.1	14.5	15.6	16.1
12H	14.4	15.5	15.0	16.0	16.5	14.3	15.3	14.8	15.8	16.4
4H 2H	11.5	12.7	12.0	13.1	13.7	11.4	12.6	11.9	13.1	13.6
3H	13.3	14.4	13.8	14.9	15.4	13.2	14.3	13.7	14.8	15.3
4H	14.2	15.1	14.7	15.7	16.2	14.1	15.0	14.6	15.5	16.1
6H	15.0	15.8	15.5	16.3	17.0	14.8	15.7	15.4	16.2	16.9
8H	15.3	16.1	15.9	16.7	17.3	15.2	16.0	15.8	16.5	17.2
12H	15.7	16.4	16.3	17.0	17.6	15.5	16.2	16.1	16.8	17.5
8H 4H	14.5	15.2	15.1	15.8	16.5	14.4	15.2	15.0	15.7	16.4
6H	15.4	16.1	16.1	16.7	17.4	15.3	16.0	16.0	16.6	17.3
8H	15.9	16.5	16.6	17.1	17.8	15.8	16.4	16.5	17.0	17.7
12H	16.4	16.9	17.1	17.6	18.3	16.3	16.8	17.0	17.5	18.2
12H 4H	14.5	15.2	15.1	15.8	16.5	14.4	15.1	15.0	15.7	16.4
6H	15.5	16.1	16.2	16.7	17.4	15.4	16.0	16.1	16.6	17.3
8H	16.1	16.6	16.7	17.2	18.0	16.0	16.5	16.6	17.1	17.9
Variations with the observer position at spacings:										
S = 1.0H	+ 0.1 / - 0.2					+ 0.1 / - 0.2				
1.5H	+ 0.2 / - 0.3					+ 0.2 / - 0.3				
2.0H	+ 0.1 / - 0.3					+ 0.1 / - 0.3				

CIE Pub.117, 1958 lm Total Lamp Luminous Flux Corrected (8log(F/F0) = 2.3)
 Area: 0.7539 m2

C Range: 0 - 360DEG
 C Interval: 22.5DEG
 Test Speed: HIGH
 Temperature:25.3DEG
 Operators:admin
 Test Date:2022-03-16

Range: 0 - 180DEG
 Interval: 1.0DEG
 Test System:EVERFINE GO-2000B_V1 SYSTEM V2.00.411
 Humidity:65.0%
 Test Distance:8.780m [K=1.0000]
 Remarks:

UTILIZATION FACTORS TABLE

Test:U:119.75V I:0.3848A P:41.672W PF:0.9031 Freq:0Hz Lamp Flux:1957.73x1 lm		
NAME: ADS lighting Corp	TYPE:	WEIGHT:
SPEC.:ASD-LFC-WD-20D42-AC-3500K	DIM.:	SERIAL No.:
MFR.: ADS lighting Corp	SUR.:0.49*0.49	Shielding Angle:

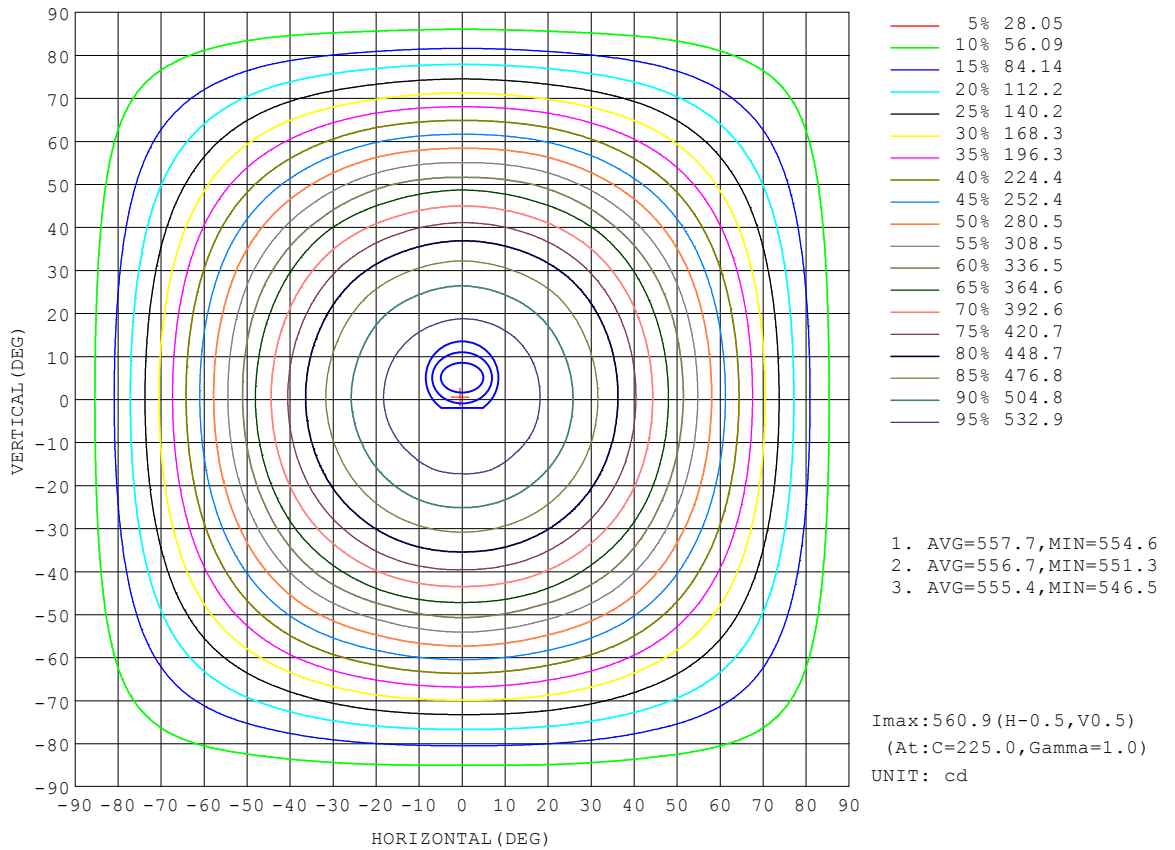
REFLECTANCE										
Ceiling	0.8	0.8	0.8	0.7	0.7	0.7	0.5	0.5	0.5	0
Walls	0.7	0.5	0.3	0.7	0.5	0.3	0.7	0.5	0.3	0
Working plane	0.2	0.2	0.2	0.2	0.2	0.2	0.2	0.2	0.2	0
ROOM INDEX	UTILIZATION FACTORS (PERCENT) $k(RI) \times RCR = 5$									
k = 0.60	53	41	34	52	41	34	50	40	33	27
0.80	63	51	43	61	50	43	58	48	42	34
1.00	71	59	51	69	58	51	66	58	50	41
1.25	78	66	59	76	65	58	72	63	57	48
1.50	83	72	65	80	71	64	76	68	62	52
2.00	90	80	73	87	78	72	82	75	69	59
2.50	94	85	79	91	83	77	85	79	74	63
3.00	97	90	84	94	87	82	88	83	78	66
4.00	102	95	90	98	92	88	92	87	83	71
5.00	104	99	94	101	96	92	94	90	87	74
ROOM INDEX	UF(total)									Direct
According to DIN EN 13032-2 2004			Suspended				SHRNOM = 1.25			

C Range: 0 - 360DEG
 C Interval: 22.5DEG
 Test Speed: HIGH
 Temperature:25.3DEG
 Operators:admin
 Test Date:2022-03-16

Range: 0 - 180DEG
 Interval: 1.0DEG
 Test System:EVERFINE GO-2000B_V1 SYSTEM V2.00.411
 Humidity:65.0%
 Test Distance:8.780m [K=1.0000]
 Remarks:

ISOCANDELA DIAGRAM

Test:U:119.75V I:0.3848A P:41.672W PF:0.9031 Freq:0Hz Lamp Flux:1957.73x1 lm		
NAME: ADS lighting Corp	TYPE:	WEIGHT:
SPEC.:ASD-LFC-WD-20D42-AC-3500K	DIM.:	SERIAL No.:
MFR.: ADS lighting Corp	SUR.:0.49*0.49	Shielding Angle:

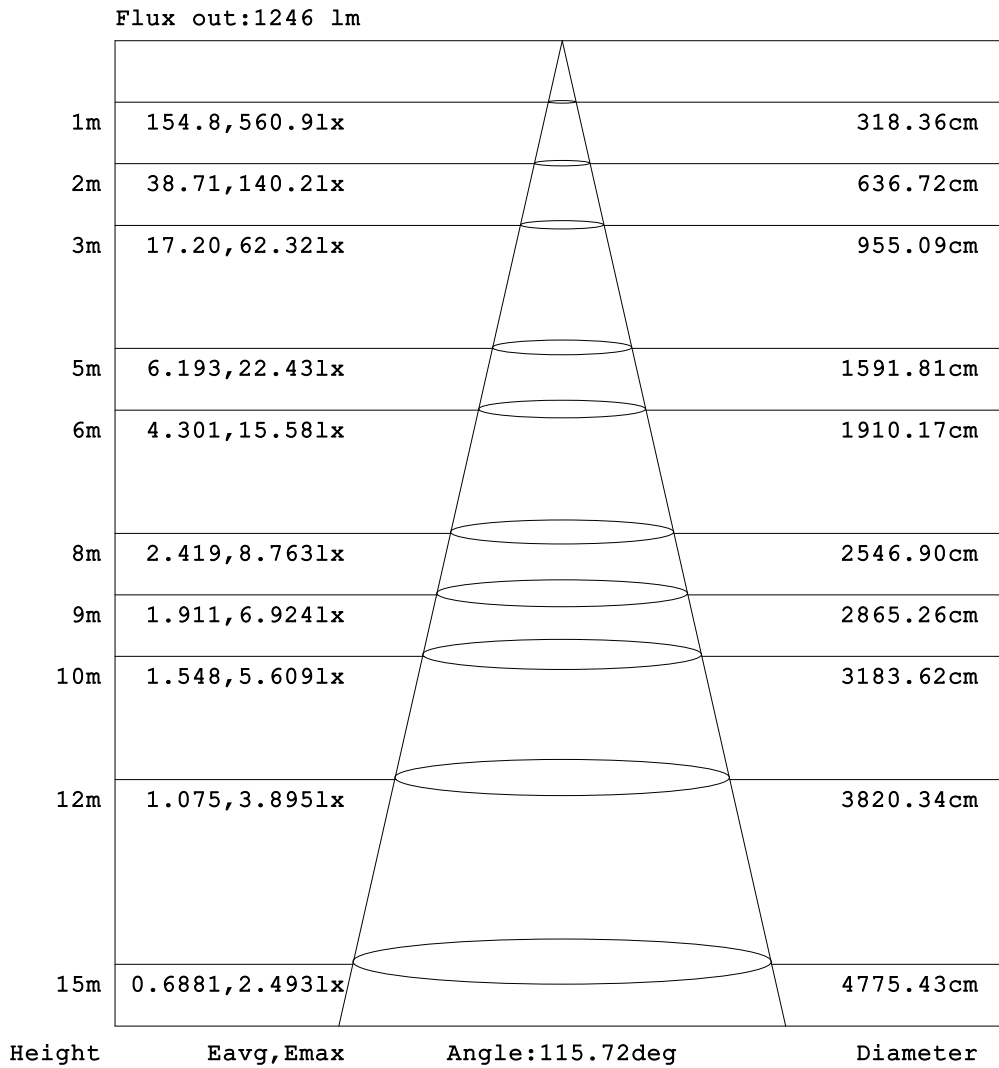


C Range: 0 - 360DEG
 C Interval: 22.5DEG
 Test Speed: HIGH
 Temperature:25.3DEG
 Operators:admin
 Test Date:2022-03-16

Range: 0 - 180DEG
 Interval: 1.0DEG
 Test System:EVERFINE GO-2000B_V1 SYSTEM V2.00.411
 Humidity:65.0%
 Test Distance:8.780m [K=1.0000]
 Remarks:

AAI Figure

Test:U:119.75V I:0.3848A P:41.672W PF:0.9031 Freq:0Hz Lamp Flux:1957.73x1 lm		
NAME: ADS lighting Corp	TYPE:	WEIGHT:
SPEC.:ASD-LFC-WD-20D42-AC-3500K	DIM.:	SERIAL No.:
MFR.: ADS lighting Corp	SUR.:0.49*0.49	Shielding Angle:



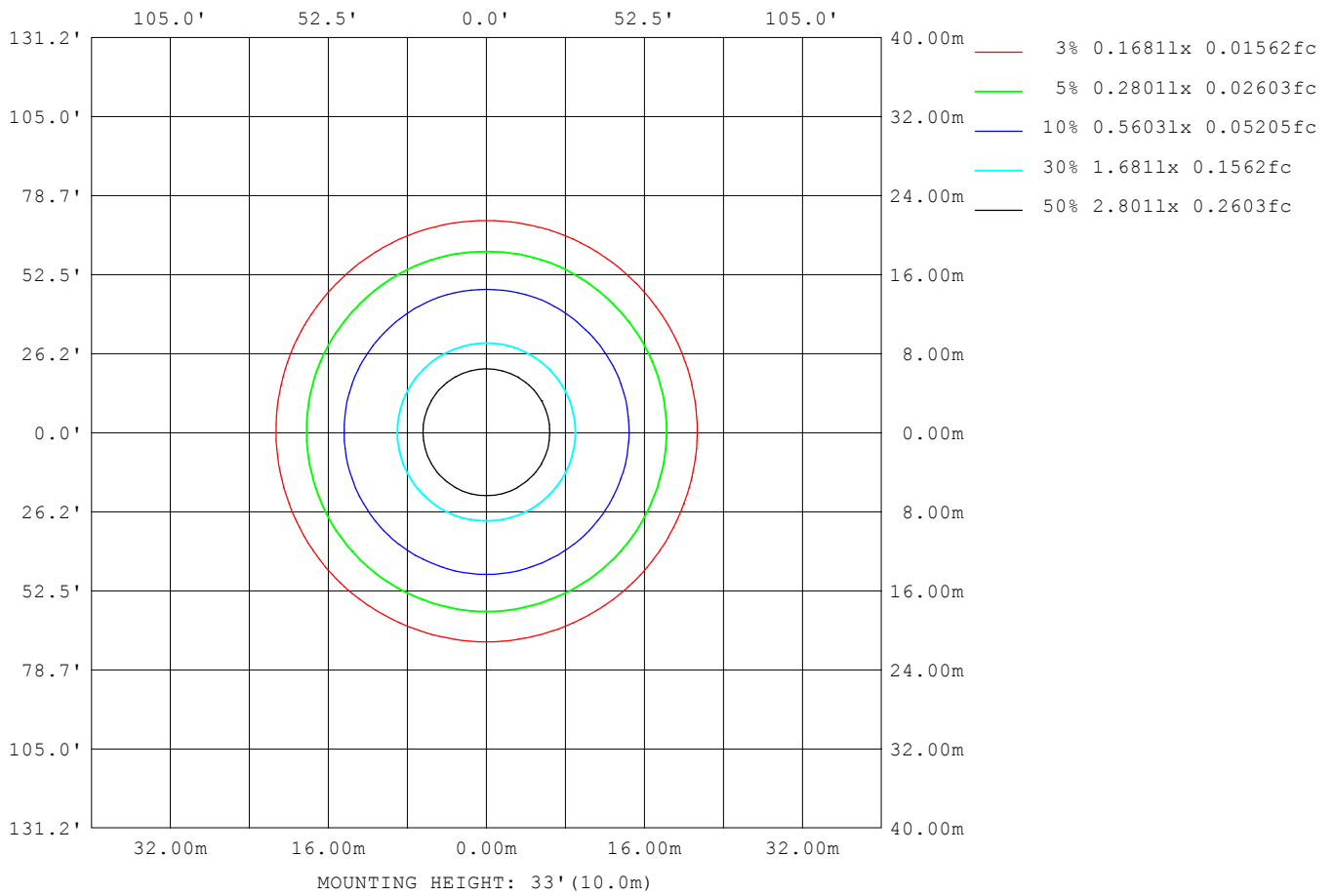
Note:The Curves indicate the illuminated area and the average illumination when the luminaire is at different distance.

C Range: 0 - 360DEG
 C Interval: 22.5DEG
 Test Speed: HIGH
 Temperature:25.3DEG
 Operators:admin
 Test Date:2022-03-16

Range: 0 - 180DEG
 Interval: 1.0DEG
 Test System:EVERFINE GO-2000B_V1 SYSTEM V2.00.411
 Humidity:65.0%
 Test Distance:8.780m [K=1.0000]
 Remarks:

ISOLUX DIAGRAM

Test:U:119.75V I:0.3848A P:41.672W PF:0.9031 Freq:0Hz Lamp Flux:1957.73x1 lm		
NAME: ADS lighting Corp	TYPE:	WEIGHT:
SPEC.:ASD-LFC-WD-20D42-AC-3500K	DIM.:	SERIAL No.:
MFR.: ADS lighting Corp	SUR.:0.49*0.49	Shielding Angle:



C Range: 0 - 360DEG
 C Interval: 22.5DEG
 Test Speed: HIGH
 Temperature:25.3DEG
 Operators:admin
 Test Date:2022-03-16

Range: 0 - 180DEG
 Interval: 1.0DEG
 Test System:EVERFINE GO-2000B_V1 SYSTEM V2.00.411
 Humidity:65.0%
 Test Distance:8.780m [K=1.0000]
 Remarks:

LED Avg.L Report

Test:U:119.75V I:0.3848A P:41.672W PF:0.9031 Freq:0Hz Lamp Flux:1957.73x1 lm		
NAME: ADS lighting Corp	TYPE:	WEIGHT:
SPEC.:ASD-LFC-WD-20D42-AC-3500K	DIM.:	SERIAL No.:
MFR.: ADS lighting Corp	SUR.:0.49*0.49	Shielding Angle:

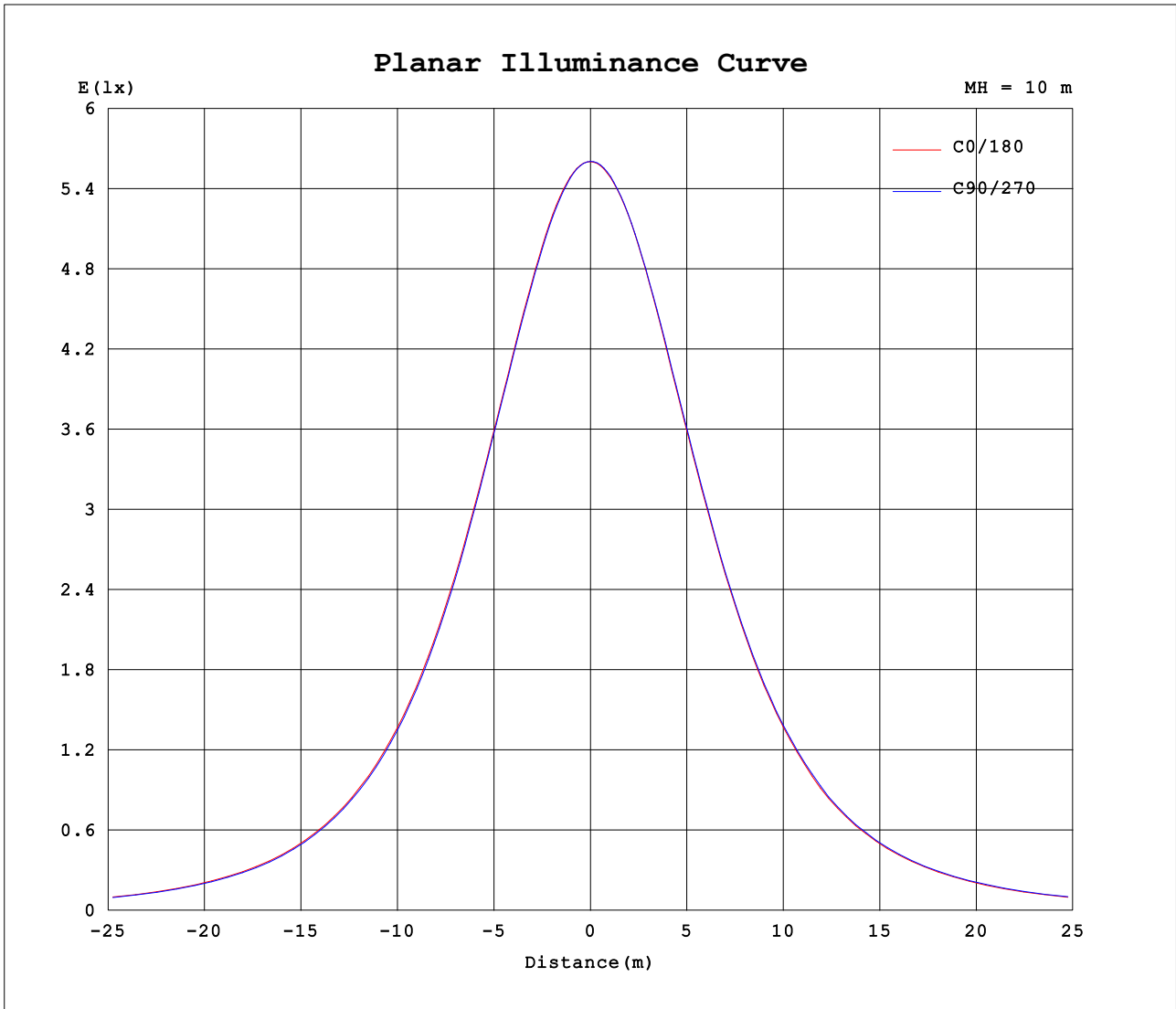
AvgL	cd/m2
L_0~180 (65) av	684
L_0~180 (75) av	664
L_0~180 (85) av	885
L_90~270 (65) av	684
L_90~270 (75) av	670
L_90~270 (85) av	900
L_45 (65) av	684
L_45 (75) av	667
L_45 (85) av	892

Standard: GB/T 29293-2012

C Range: 0 - 360DEG
 C Interval: 22.5DEG
 Test Speed: HIGH
 Temperature:25.3DEG
 Operators:admin
 Test Date:2022-03-16

Range: 0 - 180DEG
 Interval: 1.0DEG
 Test System:EVERFINE GO-2000B_V1 SYSTEM V2.00.411
 Humidity:65.0%
 Test Distance:8.780m [K=1.0000]
 Remarks:

Planar Illuminance Curve



C Range: 0 - 360DEG
 C Interval: 22.5DEG
 Test Speed: HIGH
 Temperature:25.3DEG
 Operators:admin
 Test Date:2022-03-16

Range: 0 - 180DEG
 Interval: 1.0DEG
 Test System:EVERFINE GO-2000B_V1 SYSTEM V2.00.411
 Humidity:65.0%
 Test Distance:8.780m [K=1.0000]
 Remarks:

LUMINOUS DISTRIBUTION INTENSITY DATA

Test:U:119.75V I:0.3848A P:41.672W PF:0.9031 Freq:0Hz Lamp Flux:1957.73x1 lm		
NAME: ADS lighting Corp	TYPE:	WEIGHT:
SPEC.:ASD-LFC-WD-20D42-AC-3500K	DIM.:	SERIAL No.:
MFR.: ADS lighting Corp	SUR.:0.49*0.49	Shielding Angle:

Table--1

UNIT: cd

C (DEG) \ □ (DEG)	0	22.5	45	67.5	90	112.5	135	157.5	180	202.5	225	247.5	270	292.5	315	337.5			
0	560	561	561	560	561	561	560	560	560	561	561	560	561	561	560	560			
5	559	559	558	558	558	558	558	558	558	558	559	558	559	558	558	558			
10	552	552	551	551	551	551	551	550	552	552	553	553	553	552	553	551			
15	542	541	540	540	539	540	539	540	542	542	542	543	543	543	543	542			
20	527	527	525	525	524	525	525	526	527	528	528	528	529	529	529	528			
25	508	508	506	506	506	506	506	506	508	508	510	510	511	510	510	508			
30	485	485	483	482	482	482	482	483	486	486	488	487	488	487	488	486			
35	456	455	454	453	452	453	453	455	457	458	460	459	460	460	461	458			
40	424	422	420	419	418	420	420	422	424	425	426	426	428	428	427	426			
45	388	386	383	383	382	383	383	385	388	388	391	390	392	391	391	389			
50	349	343	344	340	343	339	344	342	345	349	350	351	352	352	351	350			
55	307	302	302	299	301	299	302	302	304	308	307	310	309	311	308	309			
60	263	259	259	256	257	256	259	259	261	265	265	267	266	268	265	265			
65	219	216	215	213	213	212	214	215	217	220	221	223	223	223	221	220			
70	172	172	169	169	168	169	168	171	173	173	177	178	179	178	177	174			
75	129	129	127	127	126	127	126	128	130	131	134	134	136	134	134	131			
80	90.6	90.4	88.6	88.9	87.7	88.4	88.0	89.8	90.5	91.2	94.1	94.1	95.7	94.1	93.7	90.9			
85	58.1	58.1	56.8	57.3	56.4	57.0	56.7	58.0	58.2	58.5	60.6	60.8	61.9	60.6	60.3	58.2			
90	37.2	37.5	37.3	37.9	37.7	37.8	37.2	37.6	37.1	37.0	38.0	38.2	38.9	38.1	37.8	36.8			
95	34.5	35.2	36.1	36.8	37.0	36.5	35.8	35.2	34.1	33.8	33.9	34.2	34.2	33.9	33.4	33.4			
100	36.9	37.1	37.8	38.5	38.7	38.1	37.4	37.0	36.2	35.7	35.7	35.7	36.0	35.6	34.9	35.3			
105	38.9	38.8	39.2	39.8	39.7	39.4	38.6	38.6	38.1	37.3	36.6	36.6	36.9	36.7	36.0	37.0			
110	40.7	39.6	40.3	40.8	40.6	40.6	39.5	39.3	39.7	37.9	37.8	37.8	37.6	37.5	37.4	38.2			
115	39.9	38.2	41.2	41.6	41.9	41.6	40.0	37.9	38.3	36.5	38.8	38.9	39.0	38.6	38.7	37.4			
120	40.6	38.3	41.6	42.1	42.6	42.1	41.2	37.9	39.1	36.2	39.3	39.5	39.7	39.2	39.6	36.7			
125	41.8	39.0	41.0	42.2	43.2	41.8	40.6	38.4	40.2	36.8	39.1	39.6	40.2	39.4	39.8	37.0			
130	42.8	39.8	38.6	41.7	43.4	41.0	38.0	39.4	41.2	37.5	36.7	39.4	40.5	39.3	37.9	37.8			
135	43.8	40.2	37.8	40.4	43.0	39.6	37.5	39.6	42.1	37.5	35.4	38.8	40.7	39.0	36.6	38.0			
140	44.1	39.8	38.0	37.9	41.7	38.5	37.8	39.4	42.2	37.4	35.8	36.3	40.5	37.4	36.8	38.0			
145	43.5	40.2	38.8	38.3	40.9	37.8	38.1	39.7	41.9	38.0	36.5	35.4	39.1	36.4	37.5	38.8			
150	42.3	40.6	39.4	38.7	39.4	38.4	38.9	40.0	41.1	38.4	37.3	36.7	38.5	36.7	38.3	39.5			
155	41.7	40.2	39.0	38.5	39.4	38.9	39.0	39.4	40.7	38.2	37.6	37.6	38.0	37.2	38.3	39.1			
160	41.6	40.7	38.3	37.8	38.8	39.0	38.3	38.6	40.5	37.4	36.9	38.4	38.0	36.9	37.8	39.5			
165	41.3	40.1	38.2	37.1	38.5	38.9	37.9	38.4	40.1	37.1	36.9	38.2	38.1	36.4	38.1	39.7			
170	43.2	43.3	42.6	39.4	41.4	42.5	42.4	40.4	41.7	39.8	41.4	41.1	39.3	38.6	41.7	42.6			
175	45.3	44.9	42.3	42.5	45.4	45.1	42.1	42.4	44.4	41.8	41.7	44.3	43.5	40.8	41.8	44.8			
180	46.6	44.1	44.1	45.0	47.1	44.2	43.9	44.6	46.6	44.1	44.1	45.0	47.1	44.3	43.8	44.6			

C Range: 0 - 360DEG
 C Interval: 22.5DEG
 Test Speed: HIGH
 Temperature:25.3DEG
 Operators:admin
 Test Date:2022-03-16

□ Range: 0 - 180DEG
 □ Interval: 1.0DEG
 Test System:EVERFINE GO-2000B_V1 SYSTEM V2.00.411
 Humidity:65.0%
 Test Distance:8.780m [K=1.0000]
 Remarks: