



LED ROUND DOWNLIGHT RETROFIT KIT

► **DESIGN & OPTIONS** - LED ROUND DOWNLIGHT RETROFIT KIT has a classic low-profile design with a baffle trim, allowing you to have a stylish look with efficient lighting. On the back of each retrofit is a dip switch letting you choose either a 2700K, 3000K, 4000K or 5000K color temperature. Smooth dimming capabilities ranging from 100% to 10% with modern LED dimmers let you control the look and feel of your space. The 105° beam angle and CRI90+ will leave no dark spots on floor.

► **INSTALLATION** - Installation is easy with universal TP24 or E26 connectors. It has everything you need in one set. Preinstalled spring clips are the best solution for quick and easy installation. This fixture is suitable for most new construction, remodeling, and shallow recessed lighting housings. Refer to install instructions for detailed steps.

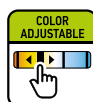
► **APPLICATION** - Install the retrofit fixture to the ceiling for bright light in your family room, bedroom, hallway or any other common area in your living space. It is suitable for Wet locations, making it perfect for kitchen and bathroom lighting as well. You could also use it as a complimentary light to an existing ceiling light.

► **ENERGY SAVING & EFFICIENCY** - Replacing an incandescent fixture with LED ROUND DOWNLIGHT RETROFIT KIT can save you 8 times as much on your current energy costs. With a lifespan of 50,000 hours, these fixtures are made to last decades under normal operation! This fixture will save you a significant amount of money in its lifetime.

► **CERTIFICATION & WARRANTY** - Buy with confidence: ASD provides a 5-year warranty along with ETL and ENERGY STAR certifications to guarantee top quality products and safety!

Top US certifications allow participation in rebates; please check the rebate programs available in your state.

Catalog number	
Notes	
Type	



PRODUCT LEGEND:

Family	Size	Dimmable	Watts	CCT	Finish
ASD-LRKR	X	X	XX	XX	XX
LED Round Downlight Retrofit Kit	4 = 4 inch 6 = 5-6 inch	D = Dimmable	10 = 10 W 15 = 15 W	CC = 2,700/3,000/4,000/5,000 K	WH = White

LED ROUND DOWNLIGHT RETROFIT KIT:

Model	Size	Watts	Voltage	Dimmable	CCT	Lumens	Dimensions (LxH)	UPC
ASD-LRKR-4D10CC-WH	4 inch	10 W	120 V	TRIAC	2,700/3,000/4,000/5,000 K	650 lm	5" x 2"	810050734776
ASD-LRKR-6D15CC-WH	5-6 inch	15 W	120 V	TRIAC	2,700/3,000/4,000/5,000 K	1000 lm	7 3/8" x 2 1/2"	810050734783

ORDERING INFORMATION:

Model	Pcs in middle box	Middle box Size	Middle box Weight	GTIN 14 for Middle box	Pcs. per Carton	Carton Size	Carton Weight	GTIN 14 for Carton
ASD-LRKR-4D10CC-WH	6	10.8" x 9.4" x 5.6"	3.3 lb	10810050734773	12	19.5" x 11.4" x 6.3"	7.3 lb	20810050734770
ASD-LRKR-6D15CC-WH	6	15.9" x 9.8" x 8.2"	5.7 lb	10810050734780	12	20.5" x 16.5" x 9.0"	12.6 lb	20810050734787

For most up-to-date spec sheets please refer to asd-lighting.com

ASD LIGHTING CORP

E-mail: orders@asd-lighting.com | Web site: www.asd-lighting.com





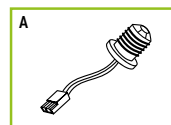
LED ROUND DOWNLIGHT RETROFIT KIT

PRODUCT SPECIFICATIONS:

Construction & Materials			Electrical System		
Housing	Iron		Input Voltage	120 V	
Lens	Acrylic		Max input current	ASD-LRKR-4D10CC-WH	0.1 A
Finish Color	White			ASD-LRKR-6D15CC-WH	0.125 A
Weight	ASD-LRKR-4D10CC-WH	0.4 lb (0.2 kg)	Inrush current (Action time)	ASD-LRKR-4D10CC-WH	0.1 A (0.18 S)
	ASD-LRKR-6D15CC-WH	0.8 lb (0.4 kg)		ASD-LRKR-6D15CC-WH	0.125 A (0.18 S)
Environmental System			AC input range	min 108 V max 132 V	
Work Environment	Suitable for Wet Locations		Off State Power	0 W	
Operating Temperature	-4°F to 104°F (-20°C to 40°C)		Power Consumption	ASD-LRKR-4D10CC-WH	10 W
L-70 Life	> 50,000 hrs			ASD-LRKR-6D15CC-WH	15 W
Optical System			Power Factor	> 0.9	
Luminous Flux	ASD-LRKR-4D10CC-WH	650 lm	Output voltage	ASD-LRKR-4D10CC-WH	60 V
	ASD-LRKR-6D15CC-WH	1000 lm		ASD-LRKR-6D15CC-WH	90 V
Color Temperature	2,700/3,000/4,000/5,000 K		Output current	150 mA	
CRI	> 90		LED Driver Class	Non-isolated	
Dimming range					
10-100%					
Dimming compatible controls					
Brand	Lutron				
Models	DVELV-300P	CTELV-303P-WH	SELV-300P	Leviton 6674	
Regular and Voluntary Certifications					
5-year limited warranty	cETLus certified 4008281	Energy Star listed			

PACKAGE CONTENTS:

Description	Q-ty
LED Round Downlight Retrofit Kit	1
Adapter TP24-E26 (A)	1
Box	1
Cut sheet	2



INSTALLATION GUIDE

IMPORTANT SAFETY INFORMATION:

Please read all the instructions below before installation.

- ▶ Make sure that the supply voltage corresponds to the rated product voltage.
- ▶ The product must be installed by a qualified electrician in accordance with the National Electrical Code and corresponding local codes.
- ▶ If the product is damaged, do not use it.

⚠ WARNING

RISK OF PERSONAL INJURY – READ and follow all WARNINGS and installation instructions.

Keep or give to the owner for future reference.

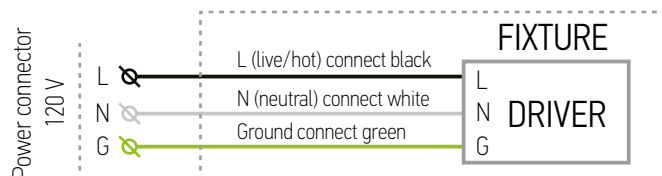
Risk of cuts: Wear gloves to prevent cuts or abrasions when removing from carton, handling, installing, and maintaining this product.

Risk of electric shock: This product must be installed in accordance with the applicable installation code by a person familiar with the construction and operation of the product and the hazards involved.

Risk of Fire: Minimum 194°F supply conductors. Consult a qualified electrician to ensure correct branch circuit conductor.

ASD® assumes no responsibility for claims arising out of improper or careless installation or handling of this product.

ELECTRICAL SCHEMATIC DIAGRAM:



INSTALLATION STEPS:

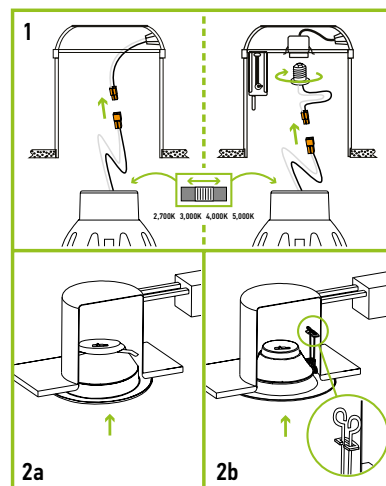
1. Turn off the main power and remove the existing trim and bulb from the Can. Use one of the options to connect the terminals. Choose needed color temperature by adjusting switch position.

2a. 4" Downlight

Carefully rotate the clips counterclockwise until the clips are fully-deployed. Install fixture up into the recessed housing firmly until trim ring is flush with the ceiling.

2b. 6" Downlight

Squeeze the two sets of spring clip arms up toward each other. Route wires into the Can and hook both springs into the arm hook on the inside of Can. Release springs and push the fixture up into the Can until sealed.



For most up-to-date spec sheets please refer to asd-lighting.com