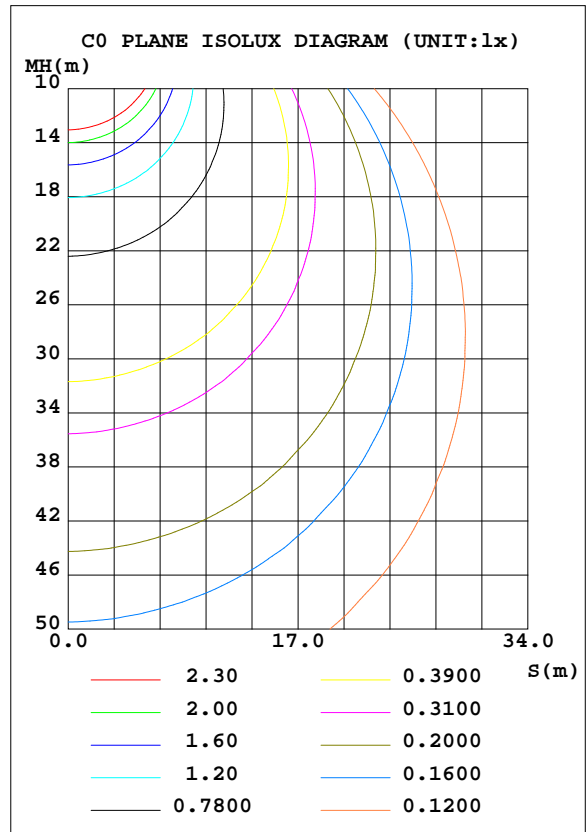
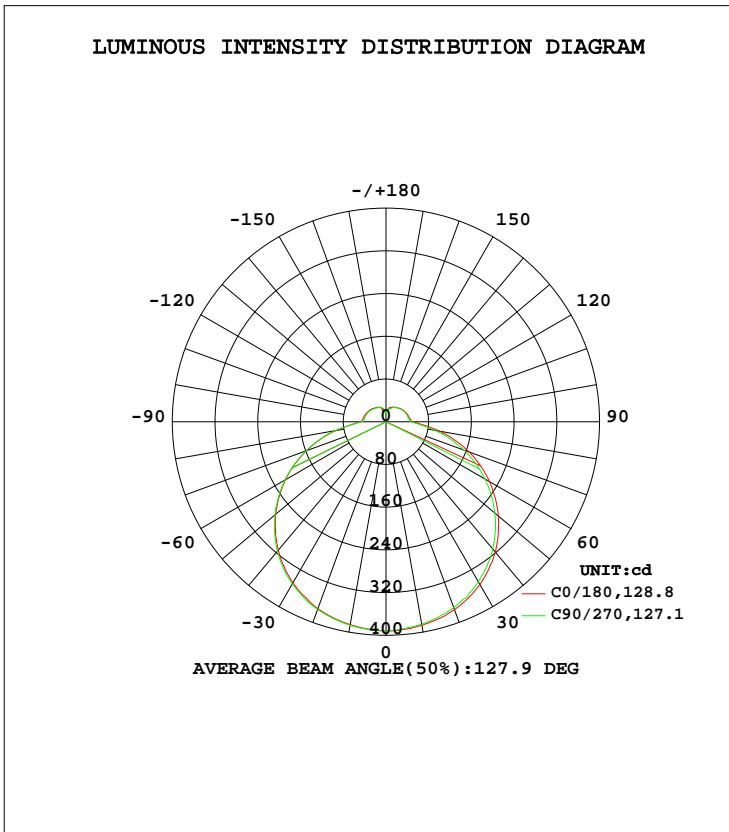


LUMINAIRE PHOTOMETRIC TEST REPORT

Test:U:119.9V I:0.2611A P:29.19W PF:0.9321 Lamp Flux:1601.11x1 lm		
NAME: LED luminaires	TYPE:N/A	WEIGHT:N/A
SPEC.:ASD-LFC-LF-16D28-AC-NKBK-3000K	DIM.: N/A	SERIAL No.:N/A
MFR.: ASD Lighting Corp	SUR.:N/A	Shielding Angle:N/A

DATA OF LAMP		PHOTOMETRIC DATA			
MODEL	PSZ2S221111007-10	Imax(cd)	392.0	S/MH(C0/180)	1.34
NOMINAL POWER(W)		LOR(%)	100.0	S/MH(C90/270)	1.32
RATED VOLTAGE(V)	120	TOTAL FLUX(lm)	1601.1	η UP, DN(C0-180)	7.3,42.8
NOMINAL FLUX(lm)	1601.11	CIE CLASS	SEMI-D.	η UP, DN(C180-360)	7.5,42.4
LAMPS INSIDE	1	η up(%)	14.8	CIBSE SHR NOM	1.50
TEST VOLTAGE(V)	120	η down(%)	85.2	CIBSE SHR MAX	1.55



C Range: 0 - 360DEG
 C Interval: 22.5DEG
 Test Speed: HIGH
 Temperature:25.1DEG
 Operators:Evan
 Test Date:2022-11-21

γ Range: 0 - 180DEG
 γ Interval: 1.0DEG
 Test System:EVERFINE GO-R5000_V2 SYSTEM V2.0.351
 Humidity:44%
 Test Distance:2.532m [K=1.0000]
 Remarks:

ZONAL FLUX DIAGRAM

ZONAL FLUX DIAGRAM:

γ	C0	C45	C90	C135	C180	C225	C270	C315	γ	Φ zone	Φ total	%lum,lamp
10	385.9	386.8	387.1	387.2	387.2	386.3	385.0	384.4	0- 10	37.10	37.10	2.32,2.32
20	372.9	373.4	374.2	374.8	374.4	372.7	370.8	370.4	10- 20	107.6	144.7	9.04,9.04
30	348.6	349.8	350.9	352.3	351.8	349.2	346.0	345.6	20- 30	167.2	311.8	19.5,19.5
40	314.1	315.3	316.3	318.8	318.4	315.2	311.1	310.2	30- 40	208.7	520.5	32.5,32.5
50	269.9	270.6	271.4	274.8	274.6	271.1	266.2	265.0	40- 50	226.6	747.2	46.7,46.7
60	217.3	217.8	218.5	223.2	223.5	220.2	214.0	212.2	50- 60	219.2	966.4	60.4,60.4
70	158.5	158.6	159.2	165.2	165.8	162.1	155.4	153.2	60- 70	187.8	1154	72.1,72.1
80	95.13	94.94	96.52	101.7	101.7	98.50	92.99	90.97	70- 80	135.7	1290	80.6,80.6
90	47.92	46.43	45.88	49.52	51.29	50.35	47.53	46.65	80- 90	74.54	1364	85.2,85.2
100	43.08	41.55	40.63	42.87	44.82	44.37	42.51	42.25	90-100	48.37	1413	88.2,88.2
110	41.09	39.85	39.21	40.96	42.36	42.19	40.92	40.94	100-110	44.25	1457	91,91
120	38.79	37.74	37.32	38.76	40.02	39.94	39.15	38.99	110-120	39.66	1497	93.5,93.5
130	36.67	35.15	35.03	36.28	37.37	37.38	36.45	36.55	120-130	33.80	1531	95.6,95.6
140	33.74	32.28	32.58	33.49	34.24	34.41	33.80	33.92	130-140	27.12	1558	97.3,97.3
150	31.30	30.11	30.68	31.35	31.60	31.80	31.37	31.30	140-150	20.37	1578	98.6,98.6
160	29.01	28.06	28.50	26.34	28.96	29.05	26.32	27.79	150-160	13.83	1592	99.4,99.4
170	22.52	22.79	22.59	22.34	24.38	23.14	22.26	22.82	160-170	7.410	1599	99.9,99.9
180	21.33	24.36	20.40	20.91	20.70	21.09	20.28	20.04	170-180	1.879	1601	100,100
DEG	LUMINOUS INTENSITY:cd									UNIT:lm		

Conical surface Flux(90deg): 633.19 lm

%lum = 39.5%
%lamp = 39.5%

Conical surface Flux(120deg): 966.39 lm

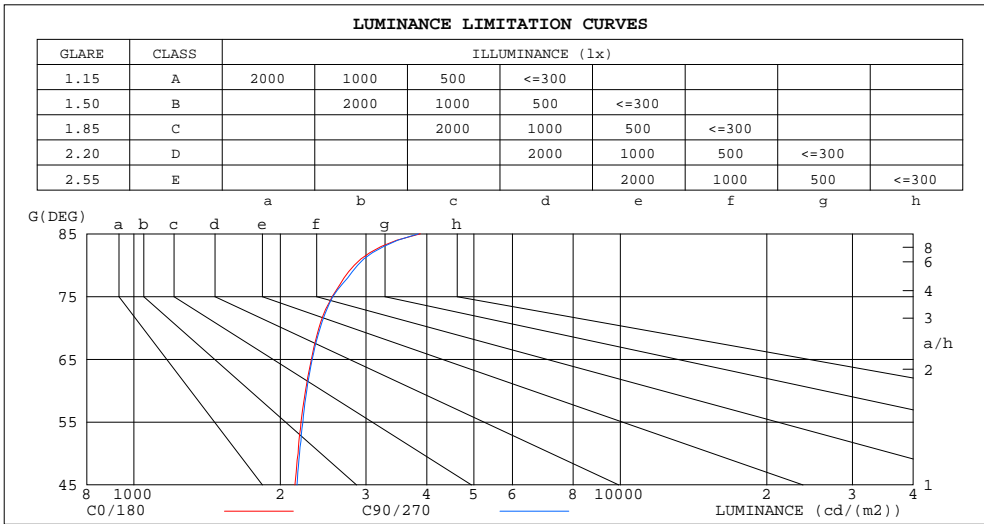
%lum = 60.4%
%lamp = 60.4%

C Range: 0 - 360DEG
C Interval: 22.5DEG
Test Speed: HIGH
Temperature:25.1DEG
Operators:Evan
Test Date:2022-11-21

γ Range: 0 - 180DEG
γ Interval: 1.0DEG
Test System:EVERFINE GO-R5000_V2 SYSTEM V2.0.351
Humidity:44%
Test Distance:2.532m [K=1.0000]
Remarks:

LUMINANCE LIMITATION CURVES

Test:U:119.9V I:0.2611A P:29.19W PF:0.9321 Lamp Flux:1601.11x1 lm		
NAME: LED luminaires	TYPE:N/A	WEIGHT:N/A
SPEC.:ASD-LFC-LF-16D28-AC-NKBK-3000K	DIM.: N/A	SERIAL No.:N/A
MFR.: ASD Lighting Corp	SUR.:N/A	Shielding Angle:N/A



LUMINANCE cd/(m2)		
G (DEG)	C0/180	C90/270
85	3878	3844
80	2840	2884
75	2557	2564
70	2401	2415
65	2317	2325
60	2253	2267
55	2206	2225
50	2176	2190
45	2143	2165

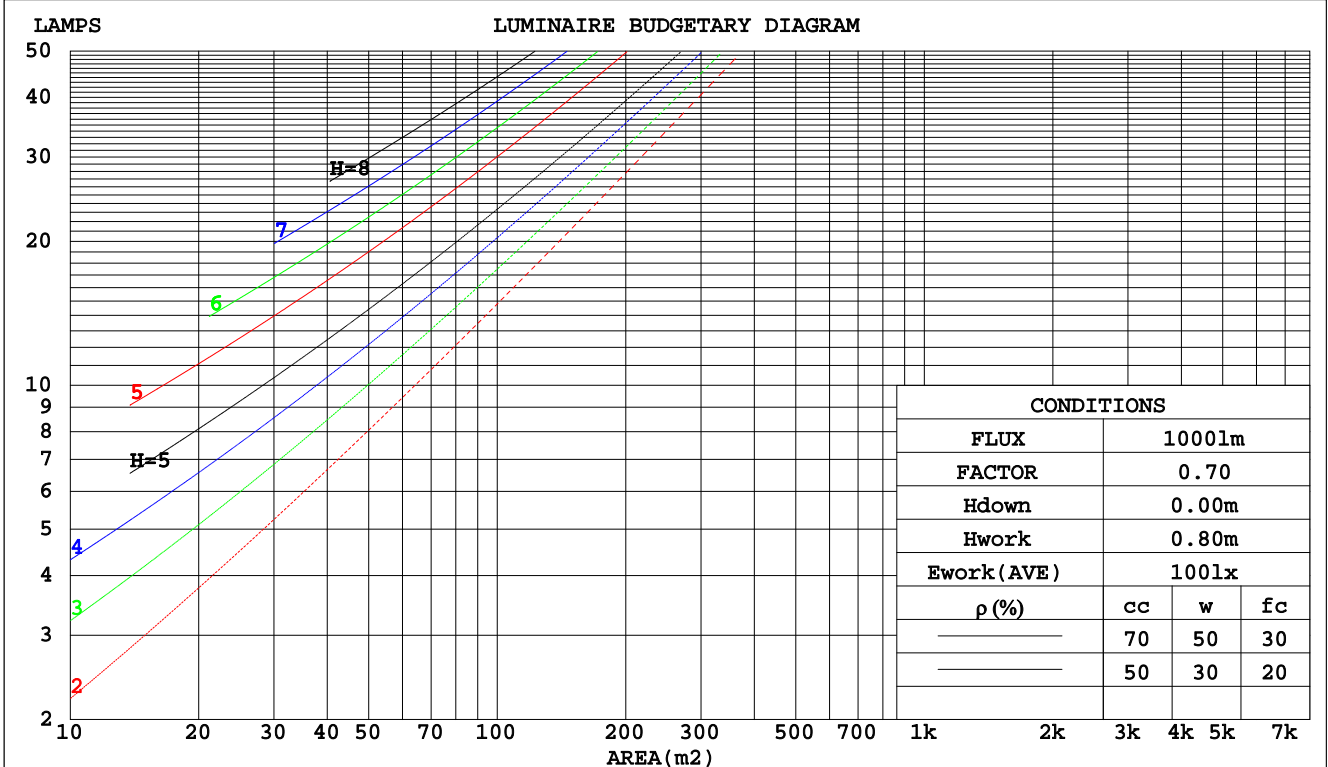
C Range: 0 - 360DEG
 C Interval: 22.5DEG
 Test Speed: HIGH
 Temperature:25.1DEG
 Operators:Evan
 Test Date:2022-11-21

γ Range: 0 - 180DEG
 γ Interval: 1.0DEG
 Test System:EVERFINE GO-R5000_V2 SYSTEM V2.0.351
 Humidity:44%
 Test Distance:2.532m [K=1.0000]
 Remarks:

CU AND LUMINAIRE BUDGETARY ESTIMATE DIAGRAM

Test:U:119.9V I:0.2611A P:29.19W PF:0.9321 Lamp Flux:1601.11x1 lm		
NAME: LED luminaires	TYPE:N/A	WEIGHT:N/A
SPEC.:ASD-LFC-LF-16D28-AC-NKBK-3000K	DIM.: N/A	SERIAL No.:N/A
MFR.: ASD Lighting Corp	SUR.:N/A	Shielding Angle:N/A

pcc	80%			70%			50%			30%			10%			0
	50%	30%	10%	50%	30%	10%	50%	30%	10%	50%	30%	10%	50%	30%	10%	0
pw																0
pfc	20%			20%			20%			20%			20%			0
RCR	RCR:Room Cavity Ratio Coefficients of Utilization(CU)															
0.0	1.16	1.16	1.16	1.11	1.11	1.11	1.03	1.03	1.03	.95	.95	.95	.88	.88	.88	.85
1.0	.98	.93	.89	.94	.90	.86	.87	.84	.81	.81	.78	.76	.75	.73	.71	.68
2.0	.84	.77	.71	.81	.75	.69	.75	.70	.65	.70	.65	.61	.65	.61	.58	.55
3.0	.73	.65	.58	.71	.63	.56	.66	.59	.54	.61	.55	.51	.56	.52	.48	.45
4.0	.65	.55	.48	.62	.54	.47	.58	.51	.45	.54	.48	.43	.50	.45	.41	.38
5.0	.57	.48	.41	.55	.47	.40	.52	.44	.39	.48	.42	.37	.45	.39	.35	.32
6.0	.51	.42	.36	.50	.41	.35	.46	.39	.33	.43	.37	.32	.40	.35	.31	.28
7.0	.46	.37	.31	.45	.37	.31	.42	.35	.29	.39	.33	.28	.37	.31	.27	.25
8.0	.42	.34	.28	.41	.33	.27	.38	.31	.26	.36	.30	.25	.34	.28	.24	.22
9.0	.39	.30	.25	.37	.30	.24	.35	.28	.23	.33	.27	.22	.31	.26	.22	.20
10.0	.35	.27	.22	.34	.27	.22	.32	.26	.21	.31	.24	.20	.29	.23	.19	.18



C Range: 0 - 360DEG
 C Interval: 22.5DEG
 Test Speed: HIGH
 Temperature:25.1DEG
 Operators:Evan
 Test Date:2022-11-21

γ Range: 0 - 180DEG
 γ Interval: 1.0DEG
 Test System:EVERFINE GO-R5000_V2 SYSTEM V2.0.351
 Humidity:44%
 Test Distance:2.532m [K=1.0000]
 Remarks:

WEC AND CCEC

Test:U:119.9V I:0.2611A P:29.19W PF:0.9321 Lamp Flux:1601.11x1 lm		
NAME: LED luminaires	TYPE:N/A	WEIGHT:N/A
SPEC.:ASD-LFC-LF-16D28-AC-NKBK-3000K	DIM.: N/A	SERIAL No.:N/A
MFR.: ASD Lighting Corp	SUR.:N/A	Shielding Angle:N/A

ρcc	80%			70%			50%			30%			10%			0
ρw	50%	30%	10%	50%	30%	10%	50%	30%	10%	50%	30%	10%	50%	30%	10%	0
ρfc	20%			20%			20%			20%			20%			0
RCR	RCR:Room Cavity Ratio						Wall Exitance Coefficients(WEC)									
0.0																
1.0	.351	.200	.063	.339	.194	.061	.317	.182	.058	.297	.172	.055	.279	.162	.052	
2.0	.315	.173	.053	.304	.168	.052	.285	.158	.049	.267	.150	.047	.250	.141	.045	
3.0	.285	.152	.045	.275	.147	.044	.257	.140	.042	.241	.132	.041	.226	.125	.039	
4.0	.259	.135	.040	.250	.131	.039	.234	.124	.037	.219	.118	.036	.206	.112	.034	
5.0	.237	.121	.035	.229	.118	.034	.215	.112	.033	.201	.106	.032	.188	.101	.030	
6.0	.218	.109	.031	.211	.107	.031	.198	.101	.030	.186	.096	.028	.174	.092	.027	
7.0	.202	.100	.028	.196	.097	.028	.183	.093	.027	.172	.088	.026	.161	.084	.025	
8.0	.188	.092	.026	.182	.090	.025	.171	.085	.024	.160	.081	.023	.151	.077	.023	
9.0	.175	.085	.024	.170	.083	.023	.160	.079	.022	.150	.075	.022	.141	.072	.021	
10.0	.164	.079	.022	.159	.077	.021	.150	.074	.021	.141	.070	.020	.133	.067	.019	

ρcc	80%			70%			50%			30%			10%			0
ρw	50%	30%	10%	50%	30%	10%	50%	30%	10%	50%	30%	10%	50%	30%	10%	0
ρfc	20%			20%			20%			20%			20%			0
RCR	RCR:Room Cavity Ratio						Ceiling Cavity Exitance Coefficients(CCEC)									
0.0	.303	.303	.303	.259	.259	.259	.177	.177	.177	.102	.102	.102	.032	.032	.032	
1.0	.297	.269	.245	.254	.231	.211	.174	.159	.146	.100	.092	.085	.032	.030	.027	
2.0	.290	.246	.210	.248	.212	.181	.170	.147	.126	.098	.085	.074	.031	.028	.024	
3.0	.282	.229	.187	.242	.198	.162	.166	.137	.114	.096	.080	.067	.031	.026	.022	
4.0	.275	.217	.172	.236	.187	.150	.162	.130	.105	.094	.076	.062	.030	.025	.021	
5.0	.267	.207	.162	.230	.179	.141	.158	.125	.100	.092	.073	.059	.030	.024	.019	
6.0	.260	.199	.155	.223	.172	.135	.154	.120	.095	.089	.071	.057	.029	.023	.019	
7.0	.253	.192	.149	.218	.166	.130	.150	.117	.092	.087	.069	.055	.028	.023	.018	
8.0	.247	.186	.145	.212	.162	.127	.147	.114	.090	.085	.067	.053	.028	.022	.018	
9.0	.240	.182	.142	.207	.158	.124	.143	.111	.088	.084	.065	.052	.027	.021	.017	
10.0	.235	.177	.139	.202	.154	.122	.140	.108	.086	.082	.064	.052	.027	.021	.017	

C Range: 0 - 360DEG
 C Interval: 22.5DEG
 Test Speed: HIGH
 Temperature:25.1DEG
 Operators:Evan
 Test Date:2022-11-21

γ Range: 0 - 180DEG
 γ Interval: 1.0DEG
 Test System:EVERFINE GO-R5000_V2 SYSTEM V2.0.351
 Humidity:44%
 Test Distance:2.532m [K=1.0000]
 Remarks:

UGR(Unified Glare Rating) Table

Test:U:119.9V I:0.2611A P:29.19W PF:0.9321 Lamp Flux:1601.11x1 lm										
NAME: LED luminaires					TYPE:N/A			WEIGHT:N/A		
SPEC.:ASD-LFC-LF-16D28-AC-NKBK-3000K					DIM.: N/A			SERIAL No.:N/A		
MFR.: ASD Lighting Corp					SUR.:N/A			Shielding Angle:N/A		
ceiling/cavity	0.7	0.7	0.5	0.5	0.3	0.7	0.7	0.5	0.5	0.3
walls	0.5	0.3	0.5	0.3	0.3	0.5	0.3	0.5	0.3	0.3
working plane	0.2	0.2	0.2	0.2	0.2	0.2	0.2	0.2	0.2	0.2
Room dimensions	Viewed crosswise					Viewed endwise				
x = 2H y = 2H	14.8	16.2	15.3	16.7	17.2	14.9	16.2	15.3	16.7	17.2
3H	16.8	18.1	17.3	18.6	19.1	16.8	18.1	17.3	18.6	19.1
4H	17.7	18.9	18.3	19.4	20.0	17.7	18.9	18.3	19.5	20.0
6H	18.6	19.7	19.1	20.3	20.8	18.6	19.8	19.2	20.3	20.9
8H	19.0	20.1	19.5	20.6	21.2	19.0	20.1	19.6	20.7	21.3
12H	19.4	20.4	20.0	21.0	21.6	19.4	20.5	20.0	21.0	21.6
4H 2H	15.5	16.7	16.0	17.2	17.8	15.5	16.7	16.1	17.3	17.8
3H	17.7	18.7	18.2	19.3	19.9	17.7	18.7	18.2	19.3	19.9
4H	18.8	19.7	19.3	20.3	20.9	18.8	19.7	19.3	20.3	20.9
6H	19.8	20.7	20.4	21.2	21.9	19.8	20.7	20.4	21.3	21.9
8H	20.3	21.1	20.9	21.7	22.4	20.3	21.1	20.9	21.7	22.4
12H	20.8	21.5	21.4	22.1	22.8	20.8	21.5	21.4	22.1	22.8
8H 4H	19.2	20.0	19.8	20.6	21.3	19.2	20.0	19.8	20.6	21.3
6H	20.4	21.1	21.1	21.7	22.5	20.4	21.1	21.1	21.7	22.5
8H	21.0	21.6	21.7	22.3	23.0	21.0	21.6	21.7	22.3	23.1
12H	21.7	22.2	22.4	22.9	23.7	21.7	22.2	22.4	22.9	23.7
12H 4H	19.2	19.9	19.8	20.6	21.3	19.2	19.9	19.8	20.6	21.3
6H	20.5	21.1	21.2	21.8	22.6	20.5	21.1	21.2	21.8	22.6
8H	21.2	21.8	21.9	22.4	23.2	21.2	21.8	21.9	22.4	23.2
Variations with the observer position at spacings:										
S = 1.0H	+ 0.1 / - 0.1					+ 0.1 / - 0.1				
1.5H	+ 0.2 / - 0.3					+ 0.2 / - 0.3				
2.0H	+ 0.2 / - 0.4					+ 0.2 / - 0.3				

CIE Pub.117 Corrected 1601 lm Total Lamp Luminous Flux.(8log(F/F0) = 1.6)

C Range: 0 - 360DEG
 C Interval: 22.5DEG
 Test Speed: HIGH
 Temperature:25.1DEG
 Operators:Evan
 Test Date:2022-11-21

γ Range: 0 - 180DEG
 γ Interval: 1.0DEG
 Test System:EVERFINE GO-R5000_V2 SYSTEM V2.0.351
 Humidity:44%
 Test Distance:2.532m [K=1.0000]
 Remarks:

UTILIZATION FACTORS TABLE

Test:U:119.9V I:0.2611A P:29.19W PF:0.9321 Lamp Flux:1601.11x1 lm		
NAME: LED luminaires	TYPE:N/A	WEIGHT:N/A
SPEC.:ASD-LFC-LF-16D28-AC-NKBK-3000K	DIM.: N/A	SERIAL No.:N/A
MFR.:ASD Lighting Corp	SUR.:N/A	Shielding Angle:N/A

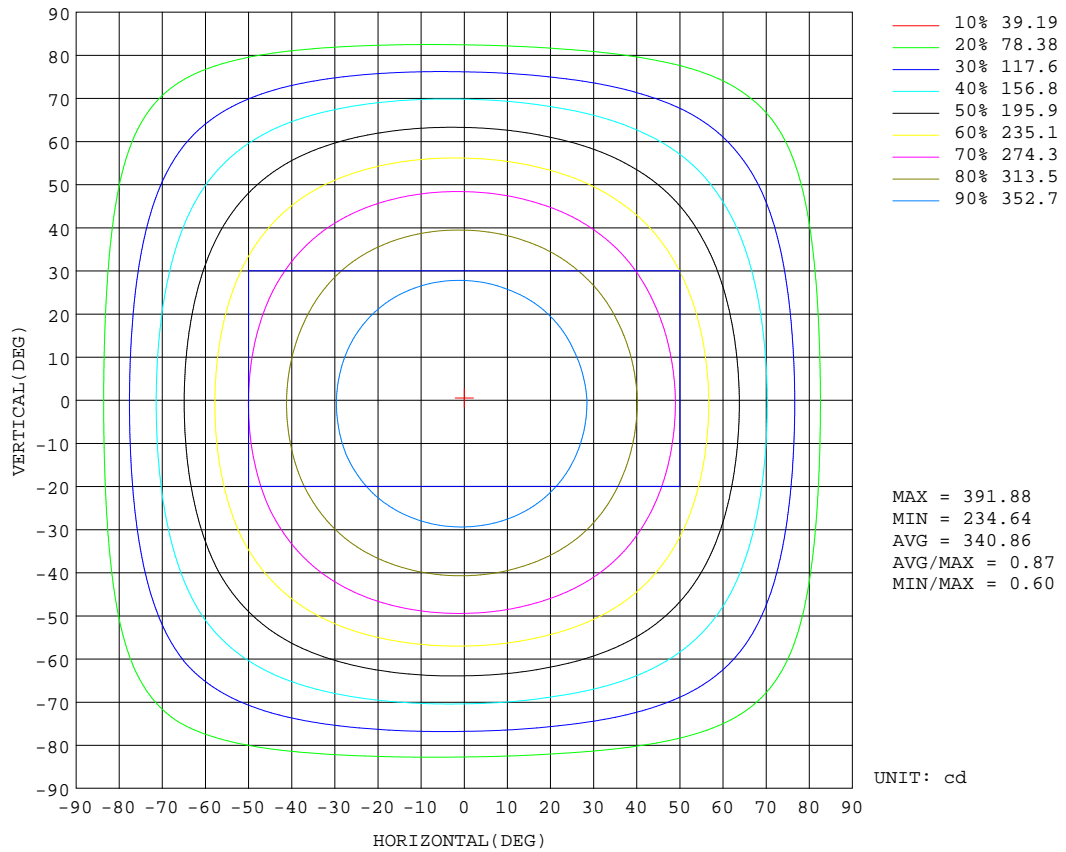
REFLECTANCE										
Ceiling	0.8	0.8	0.8	0.7	0.7	0.7	0.5	0.5	0.5	0
Walls	0.7	0.5	0.3	0.7	0.5	0.3	0.7	0.5	0.3	0
Working plane	0.2	0.2	0.2	0.2	0.2	0.2	0.2	0.2	0.2	0
ROOM INDEX	UTILIZATION FACTORS(PERCENT) $k(RI) \times RCR = 5$									
k = 0.60	50	38	31	49	38	31	47	37	30	23
0.80	60	47	39	58	46	39	55	45	38	30
1.00	68	55	47	66	54	47	62	55	46	37
1.25	75	63	55	72	62	54	68	59	52	43
1.50	80	69	61	77	67	59	73	64	57	47
2.00	87	77	69	84	75	68	79	71	65	54
2.50	92	82	75	88	80	73	82	75	70	58
3.00	95	87	80	92	84	78	85	79	74	62
4.00	100	93	87	96	90	84	89	84	80	66
5.00	102	96	91	99	93	89	92	87	84	69
ROOM INDEX	UF(total)									Direct
According to DIN EN 13032-2 2004			Suspended				SHRNOM = 1.25			

C Range: 0 - 360DEG
 C Interval: 22.5DEG
 Test Speed: HIGH
 Temperature:25.1DEG
 Operators:Evan
 Test Date:2022-11-21

γ Range: 0 - 180DEG
 γ Interval: 1.0DEG
 Test System:EVERFINE GO-R5000_V2 SYSTEM V2.0.351
 Humidity:44%
 Test Distance:2.532m [K=1.0000]
 Remarks:

ISOCANDELA DIAGRAM

Test:U:119.9V I:0.2611A P:29.19W PF:0.9321 Lamp Flux:1601.11x1 lm		
NAME: LED luminaires	TYPE:N/A	WEIGHT:N/A
SPEC.:ASD-LFC-LF-16D28-AC-NKBK-3000K	DIM.: N/A	SERIAL No.:N/A
MFR.:ASD Lighting Corp	SUR.:N/A	Shielding Angle:N/A

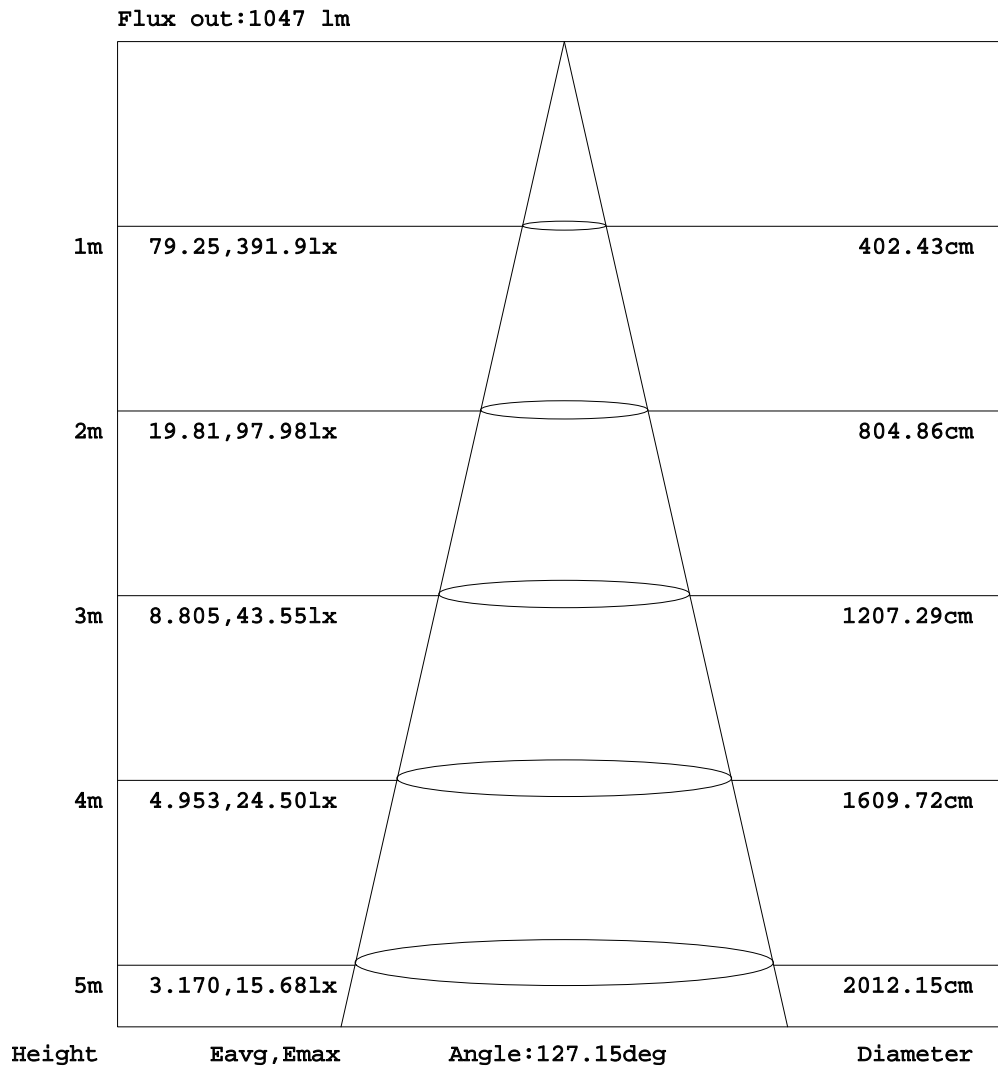


C Range: 0 - 360DEG
 C Interval: 22.5DEG
 Test Speed: HIGH
 Temperature:25.1DEG
 Operators:Evan
 Test Date:2022-11-21

γ Range: 0 - 180DEG
 γ Interval: 1.0DEG
 Test System:EVERFINE GO-R5000_V2 SYSTEM V2.0.351
 Humidity:44%
 Test Distance:2.532m [K=1.0000]
 Remarks:

AAI Figure

Test:U:119.9V I:0.2611A P:29.19W PF:0.9321 Lamp Flux:1601.11x1 lm		
NAME: LED luminaires	TYPE:N/A	WEIGHT:N/A
SPEC.:ASD-LFC-LF-16D28-AC-NKBK-3000K	DIM.: N/A	SERIAL No.:N/A
MFR.:ASD Lighting Corp	SUR.:N/A	Shielding Angle:N/A



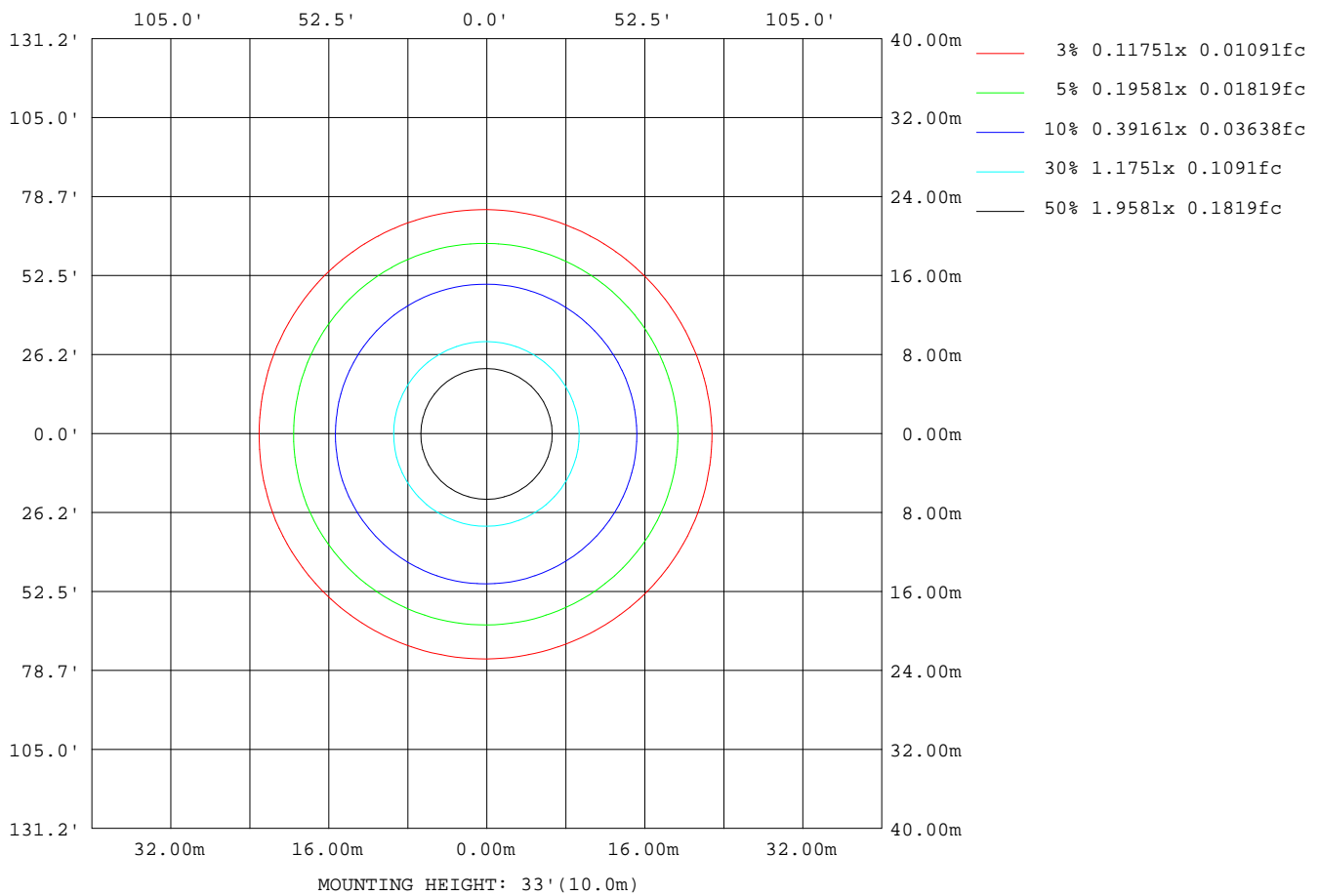
Note:The Curves indicate the illuminated area and the average illumination when the luminaire is at different distance.

C Range: 0 - 360DEG
 C Interval: 22.5DEG
 Test Speed: HIGH
 Temperature:25.1DEG
 Operators:Evan
 Test Date:2022-11-21

γ Range: 0 - 180DEG
 γ Interval: 1.0DEG
 Test System:EVERFINE GO-R5000_V2 SYSTEM V2.0.351
 Humidity:44%
 Test Distance:2.532m [K=1.0000]
 Remarks:

ISOLUX DIAGRAM

Test:U:119.9V I:0.2611A P:29.19W PF:0.9321 Lamp Flux:1601.11x1 lm		
NAME: LED luminaires	TYPE:N/A	WEIGHT:N/A
SPEC.:ASD-LFC-LF-16D28-AC-NKBK-3000K	DIM.: N/A	SERIAL No.:N/A
MFR.: ASD Lighting Corp	SUR.:N/A	Shielding Angle:N/A



C Range: 0 - 360DEG
 C Interval: 22.5DEG
 Test Speed: HIGH
 Temperature:25.1DEG
 Operators:Evan
 Test Date:2022-11-21

γ Range: 0 - 180DEG
 γ Interval: 1.0DEG
 Test System:EVERFINE GO-R5000_V2 SYSTEM V2.0.351
 Humidity:44%
 Test Distance:2.532m [K=1.0000]
 Remarks:

LED Avg.L Report

Test:U:119.9V I:0.2611A P:29.19W PF:0.9321 Lamp Flux:1601.11x1 lm		
NAME: LED luminaires	TYPE:N/A	WEIGHT:N/A
SPEC.:ASD-LFC-LF-16D28-AC-NKBK-3000K	DIM.: N/A	SERIAL No.:N/A
MFR.:ASD Lighting Corp	SUR.:N/A	Shielding Angle:N/A

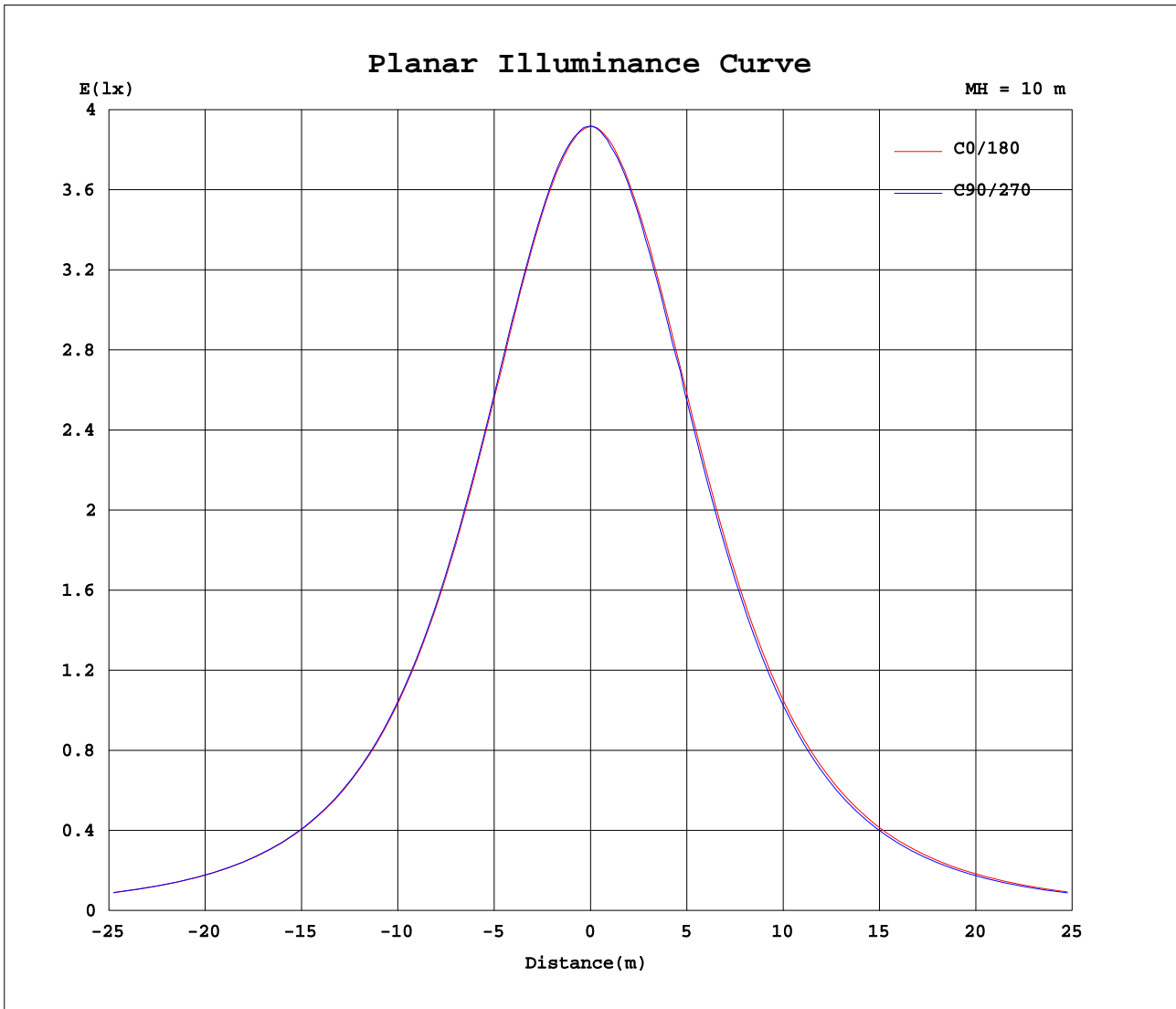
AvgL	cd/m2
L_0~180(65)av	2358
L_0~180(75)av	2615
L_0~180(85)av	4031
L_90~270(65)av	2300
L_90~270(75)av	2526
L_90~270(85)av	3820
L_45(65)av	2331
L_45(75)av	2577
L_45(85)av	3941

Standard: GB/T 29293-2012

C Range: 0 - 360DEG
 C Interval: 22.5DEG
 Test Speed: HIGH
 Temperature:25.1DEG
 Operators:Evan
 Test Date:2022-11-21

γ Range: 0 - 180DEG
 γ Interval: 1.0DEG
 Test System:EVERFINE GO-R5000_V2 SYSTEM V2.0.351
 Humidity:44%
 Test Distance:2.532m [K=1.0000]
 Remarks:

Planar Illuminance Curve



C Range: 0 - 360DEG
 C Interval: 22.5DEG
 Test Speed: HIGH
 Temperature: 25.1DEG
 Operators: Evan
 Test Date: 2022-11-21

γ Range: 0 - 180DEG
 γ Interval: 1.0DEG
 Test System: EVERFINE GO-R5000_V2 SYSTEM V2.0.351
 Humidity: 44%
 Test Distance: 2.532m [K=1.0000]
 Remarks:

LUMINOUS DISTRIBUTION INTENSITY DATA

Test:U:119.9V I:0.2611A P:29.19W PF:0.9321 Lamp Flux:1601.11x1 lm		
NAME: LED luminaires	TYPE:N/A	WEIGHT:N/A
SPEC.:ASD-LFC-LF-16D28-AC-NKBK-3000K	DIM.: N/A	SERIAL No.:N/A
MFR.: ASD Lighting Corp	SUR.:N/A	Shielding Angle:N/A

Table--1

UNIT: cd

C(DEG) γ (DEG)	0	22.5	45	67.5	90	112.5	135	157.5	180	202.5	225	247.5	270	292.5	315	337.5			
0	392	392	392	392	392	392	392	392	392	392	392	392	392	392	392	392			
5	390	390	390	390	390	391	391	391	390	390	390	390	389	389	389	389			
10	386	386	387	387	387	387	387	387	387	386	386	385	385	385	384	385			
15	380	380	381	382	382	382	382	382	382	381	380	380	379	379	379	379			
20	373	373	373	374	374	375	375	375	374	373	373	371	371	370	370	370			
25	361	362	363	363	364	365	365	365	364	363	362	361	362	359	359	360			
30	349	349	350	350	351	352	352	353	352	350	349	347	346	346	346	346			
35	332	333	334	334	335	336	337	337	336	335	333	332	330	329	329	330			
40	314	314	315	315	316	318	319	319	318	317	315	313	311	310	310	311			
45	292	293	294	294	295	296	298	299	297	296	294	292	290	289	289	290			
50	270	270	271	270	271	273	275	276	275	273	271	268	266	265	265	266			
55	244	245	244	245	246	248	250	251	250	249	246	243	241	240	239	241			
60	217	218	218	217	218	221	223	225	224	222	220	217	214	212	212	214			
65	189	190	189	188	189	192	195	197	196	194	192	189	186	184	183	185			
70	158	159	159	158	159	162	165	168	166	164	162	159	155	153	153	155			
75	128	128	128	127	128	131	134	136	133	132	130	127	124	122	122	124			
80	95.1	95.1	94.9	94.8	96.5	99.1	102	104	102	101	98.5	95.7	93.0	91.3	91.0	91.6			
85	65.2	65.1	64.7	63.9	64.6	67.2	69.9	72.0	70.3	69.5	68.0	65.9	63.8	62.6	62.4	63.0			
90	47.9	47.4	46.4	45.5	45.9	47.4	49.5	51.3	51.3	51.1	50.3	48.9	47.5	46.8	46.7	47.1			
95	44.0	43.5	42.6	41.6	41.6	42.7	44.3	45.8	46.3	46.3	45.8	44.7	43.6	43.1	43.2	43.6			
100	43.1	42.6	41.6	40.7	40.6	41.4	42.9	44.1	44.8	44.9	44.4	43.4	42.5	42.1	42.3	42.6			
105	42.2	41.7	40.8	40.0	39.8	40.6	41.8	43.0	43.4	43.6	43.0	42.3	41.7	41.3	41.7	42.1			
110	41.1	40.8	39.8	39.3	39.2	39.7	41.0	42.1	42.4	42.5	42.2	41.3	40.9	40.5	40.9	41.2			
115	39.9	39.7	38.8	38.5	38.4	38.9	39.9	40.9	41.2	41.2	41.2	40.5	40.2	39.6	40.0	40.3			
120	38.8	38.7	37.7	37.5	37.3	37.8	38.8	39.6	40.0	40.2	39.9	39.6	39.1	38.6	39.0	39.3			
125	37.8	37.4	36.5	36.5	36.2	36.7	37.6	38.4	38.5	38.8	38.8	38.4	37.8	37.5	37.9	37.8			
130	36.7	36.1	35.2	35.3	35.0	35.4	36.3	37.0	37.4	37.4	37.4	36.9	36.5	36.2	36.6	36.5			
135	35.2	34.7	33.7	33.8	33.8	34.0	34.9	35.6	35.8	35.8	36.0	35.7	35.0	34.8	35.4	35.4			
140	33.7	33.4	32.3	32.7	32.6	32.8	33.5	34.2	34.2	34.3	34.4	34.2	33.8	33.4	33.9	33.9			
145	32.5	32.2	31.1	31.6	31.5	31.7	32.3	32.8	32.9	33.0	33.0	32.9	32.4	32.4	32.7	32.5			
150	31.3	31.3	30.1	30.7	30.7	30.8	31.3	31.8	31.6	31.7	31.8	31.8	31.4	31.3	31.3	31.1			
155	30.2	29.4	29.2	29.6	28.9	29.6	30.0	30.4	30.6	29.8	30.2	30.5	29.6	29.9	29.6	29.1			
160	29.0	28.6	28.1	28.2	28.5	28.3	26.3	29.2	29.0	28.2	29.1	29.0	26.3	28.4	27.8	29.0			
165	21.8	25.6	26.8	26.5	26.7	21.8	25.1	28.0	27.6	27.2	27.1	23.6	24.6	26.3	25.8	27.2			
170	22.5	22.3	22.8	23.2	22.6	22.4	22.3	23.4	24.4	24.4	23.1	22.5	22.3	23.3	22.8	23.3			
175	18.5	17.8	17.8	17.6	17.2	17.6	17.8	19.1	19.3	19.4	18.6	17.3	17.4	17.2	17.3	17.5			
180	21.3	22.5	24.4	22.8	20.4	19.6	20.9	21.9	20.7	20.9	21.1	21.2	20.3	20.0	20.0	20.7			

C Range: 0 - 360DEG
 C Interval: 22.5DEG
 Test Speed: HIGH
 Temperature:25.1DEG
 Operators:Evan
 Test Date:2022-11-21

γ Range: 0 - 180DEG
 γ Interval: 1.0DEG
 Test System:EVERFINE GO-R5000_V2 SYSTEM V2.0.351
 Humidity:44%
 Test Distance:2.532m [K=1.0000]
 Remarks: