



# LED ROUND OUTDOOR WALL CYLINDER

► **DESIGN & OPTIONS** - LED ROUND OUTDOOR WALL CYLINDER has a modern design with effective up/down illumination. This fixture has a tempered glass cover and durable die-cast aluminum body that is highly resistant to rust. It runs on 120V circuits with Triac dimming. It is also CCT selectable, letting you set it to 3,000K, 4,000K or 5,000K with a simple switch. Comes in a BLACK or BRONZE finish.



**Models with a built-in battery back-up** provide 90 minutes of power in case of emergency.



**Models with a built-in PC** automatically turn on/off depending on the time of day.

► **INSTALLATION** - Installation is quick and easy: just attach the mounting plate to the J-box with screws, connect the wires, and fasten the fixture to the mounting plate. Waterproof gaskets, decorative nuts and all necessary installation accessories are provided. Refer to install instructions for detailed steps.

► **APPLICATION** - This LED ROUND OUTDOOR WALL CYLINDER creates a cozy ambience that is great for indoor and outdoor projects such as decks, front doors, porches, patios, gardens, corridors, balconies, villas, and walkways. The fixture is Wet Location rated and suitable for severe weather conditions.

► **ENERGY SAVINGS & EFFICIENCY** - With a lifespan of 50,000 hours, these fixtures are made to last decades under normal operation! This fixture can cut your electric bill by up to 80% instantly and will save you a significant amount of money in its lifetime.

► **CERTIFICATION & WARRANTY** - Buy with confidence: ASD provides a 5-year limited warranty along with ETL certification to guarantee top quality products and safety!

Catalog number	
Notes	
Type	



Model	Light direction	Watts	Voltage	Dimmable	Lumens	CCT	Finish	Dimensions (LxWxH)	Options
ASD-OLCLR-1D9CC-BK	1	9W	120 V	TRIAC	910/1,002/870 lm	3CCT (3,000/4,000/5,000 K)	Black	6-3/8" x 4-3/8" x 7-7/8"	-
ASD-OLCLR-1D9CC-BZ	1	9W	120 V	TRIAC	910/1,002/870 lm	3CCT (3,000/4,000/5,000 K)	Oil rubbed bronze	6-3/8" x 4-3/8" x 7-7/8"	-
ASD-OLCLR-2D18CC-BK	2	18W	120 V	TRIAC	1,678/1,859/1,745 lm	3CCT (3,000/4,000/5,000 K)	Black	6-3/8" x 4-3/8" x 11-13/16"	-
ASD-OLCLR-2D18CC-BZ	2	18W	120 V	TRIAC	1,678/1,859/1,745 lm	3CCT (3,000/4,000/5,000 K)	Oil rubbed bronze	6-3/8" x 4-3/8" x 11-13/16"	-
<b>OLCLR-EM WITH BATTERY BACK-UP</b>									
ASD-OLCLR-MV-2D18CC-EM-BK	2	18W	120-277 V	TRIAC	1,556/1,676/1,529 lm	3CCT (3,000/4,000/5,000 K)	Black	6-3/8" x 4-3/8" x 11-13/16"	6W Battery back-up
ASD-OLCLR-MV-2D18CC-EM-BZ	2	18W	120-277 V	TRIAC	1,556/1,676/1,529 lm	3CCT (3,000/4,000/5,000 K)	Oil rubbed bronze	6-3/8" x 4-3/8" x 11-13/16"	6W Battery back-up
<b>OLCLR-PC WITH PHOTOCELL</b>									
ASD-OLCLR-1N9CC-PC-BK	1	9W	120 V	-	910/1,002/870 lm	3CCT (3,000/4,000/5,000 K)	Black	6-3/8" x 4-3/8" x 7-7/8"	Photocell
ASD-OLCLR-1N9CC-PC-BZ	1	9W	120 V	-	910/1,002/870 lm	3CCT (3,000/4,000/5,000 K)	Oil rubbed bronze	6-3/8" x 4-3/8" x 7-7/8"	Photocell
ASD-OLCLR-2N18CC-PC-BK	2	18W	120 V	-	1,678/1,859/1,745 lm	3CCT (3,000/4,000/5,000 K)	Black	6-3/8" x 4-3/8" x 11-13/16"	Photocell
ASD-OLCLR-2N18CC-PC-BZ	2	18W	120 V	-	1,678/1,859/1,745 lm	3CCT (3,000/4,000/5,000 K)	Oil rubbed bronze	6-3/8" x 4-3/8" x 11-13/16"	Photocell

## PRODUCT SPECIFICATIONS:

Construction & Materials						
Housing	Aluminum					
Lens	Glass					
Finish	Black, Oil rubbed bronze					
Weight	ASD-OLCLR-1D9CC-BK	1.9 lb (0.9 kg)	ASD-OLCLR-MV-2D18CC-EM-BK	3 lb (1.4 kg)	ASD-OLCLR-1N9CC-PC-BK	2 lb (0.9 kg)
	ASD-OLCLR-1D9CC-BZ		ASD-OLCLR-MV-2D18CC-EM-BZ		ASD-OLCLR-1N9CC-PC-BZ	
	ASD-OLCLR-2D18CC-BK	2.3 lb (1.2 kg)			ASD-OLCLR-2N18CC-PC-BK	25 lb (1.2 kg)
	ASD-OLCLR-2D18CC-BZ				ASD-OLCLR-2N18CC-PC-BZ	
Environmental system						
Work environment	Suitable for Wet Locations					
Operating temperature	-4°F to 113°F (-20°C to 45°C) for model with photocell or battery back-up: -4°F to 122°F (-20°C to 50°C)					
L-70 Life	> 50,000 hrs					

For most up-to-date spec sheets please refer to [asd-lighting.com](http://asd-lighting.com)

ASD LIGHTING CORP

E-mail: [orders@asd-lighting.com](mailto:orders@asd-lighting.com) | Web site: [www.asd-lighting.com](http://www.asd-lighting.com)



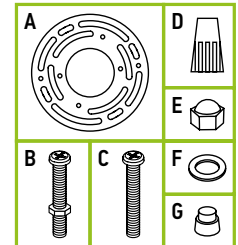


# LED ROUND OUTDOOR WALL CYLINDER




Optical system						
Luminous flux	ASD-OLCLR-1D9CC-BK	910/1,002/870 lm	ASD-OLCLR-MV-2D18CC-EM-BK	1,556/1,676/1,529 lm	ASD-OLCLR-1N9CC-PC-BK	910/1,002/870 lm
	ASD-OLCLR-1D9CC-BZ		ASD-OLCLR-MV-2D18CC-EM-BZ		ASD-OLCLR-1N9CC-PC-BZ	
	ASD-OLCLR-2D18CC-BK	1,678/1,859/1,745 lm			ASD-OLCLR-2N18CC-PC-BK	1,678/1,859/1,745 lm
	ASD-OLCLR-2D18CC-BZ		ASD-OLCLR-2N18CC-PC-BZ			
Color temperature	3CCT (3,000/4,000/5,000 K)					
CRI	> 80					
Electrical system						
Input voltage	120 V		for model with battery back-up: 120-277 V			
Max input current	ASD-OLCLR-1D9CC-BK	0.1 A	ASD-OLCLR-MV-2D18CC-EM-BK	0.4 A	ASD-OLCLR-1N9CC-PC-BK	0.4 A
	ASD-OLCLR-1D9CC-BZ		ASD-OLCLR-MV-2D18CC-EM-BZ		ASD-OLCLR-1N9CC-PC-BZ	
	ASD-OLCLR-2D18CC-BK	0.2 A			ASD-OLCLR-2N18CC-PC-BK	
	ASD-OLCLR-2D18CC-BZ		ASD-OLCLR-2N18CC-PC-BZ			
Inrush current (Action time)	1 light direction: 0.075 A (0.1 S)		2 light direction: 0.15 A (0.1 S)			
Off state power	0W					
Power consumption	1 light direction: 9W		2 light direction: 18W			
Power factor	> 0.9					
Output voltage	ASD-OLCLR-1D9CC-BK	-	ASD-OLCLR-MV-2D18CC-EM-BK	36 V	ASD-OLCLR-1N9CC-PC-BK	36 V
	ASD-OLCLR-1D9CC-BZ		ASD-OLCLR-MV-2D18CC-EM-BZ		ASD-OLCLR-1N9CC-PC-BZ	
	ASD-OLCLR-2D18CC-BK			ASD-OLCLR-2N18CC-PC-BK		
	ASD-OLCLR-2D18CC-BZ		ASD-OLCLR-2N18CC-PC-BZ			
Max output current	1 light direction: 0.25 A		2 light direction: 0.45 A			
Surge protection DM/CM	1.25 kV / 1.25 kV		for model with battery back-up: 1.5 kV / 1.5 kV			
Dimming compatible controls						
Brand	Lutron		Leviton			
Models	MACL-153MLH	STCL-153PH	RNL06			
	DVCL-153PR	P-PKG1W	DSL06			
Regular and voluntary certifications						
5-year limited warranty						
cETLus certified 4001256						

## PACKAGE CONTENTS:

Description	Q-ty
LED Round Outdoor Wall Cylinder	1
Mounting plate (A)	1
Mounting screw (B)	2
Outlet box screw (C)	2
Wire nut (D)	3
Decorative nut (E)	2
Waterproof gasket (F)	2
Photocell cap (G) only for PC models	1
Box	1



## BUILT-IN BACK-UP BATTERY INFORMATION

Operating condition	 Blinking
Emergency mode	 OFF
Test switch	

- Indicator Light is Blinking: Battery back-up recharging.
- Indicator Light is OFF: Battery back-up is full charge; Battery back-up is working.
- In order to test the battery back-up press the test switch one time. To turn off the emergency power state press test switch one more time.

Specifications	
Input voltage	100-277 V 50/60 Hz
AC Input current	110 mA max.
AC Input power rating	5.0W max.
Output current and voltage	200 mA 20-36Vdc
Output power	6W
Lumens	400 lm
Emergency time	min 90 minutes
Warranty	5 Years
Indicator light	Illuminated test switch
Battery	Li-ion battery - 11.1 V/2200 mAh
Battery charging current	440 mA
Charging time	8 Hours
Temperature rating (Ambient)	32°F to 113°F (0°C to 45°C)

## BUILT-IN PHOTOCELL INFORMATION

The dusk-to-dawn sensor automatically turns the fixture off during daylight hours.

Specifications	Model: MD.EP-120R
Input power	120 VAC, 60HZ
Light level to turn ON	30 ~ 150 Lux (2.8 - 14 Fc)
Light level to turn OFF	200 ~ 800 Lux (18.6-74.4 Fc)
Operating temperature	-4°F to 122°F (-20°C to 50°C)

For most up-to-date spec sheets please refer to [asd-lighting.com](http://asd-lighting.com)



# LED ROUND OUTDOOR WALL CYLINDER

## INSTALLATION GUIDE

### IMPORTANT SAFETY INFORMATION:

Please read all the instructions below before installation.

- ▶ Make sure that the supply voltage corresponds to the rated product voltage.
- ▶ The product must be installed by a qualified electrician in accordance with the National Electrical Code and corresponding local codes.
- ▶ If the product is damaged, do not use it.

### ⚠ WARNING

**RISK OF PERSONAL INJURY – READ and follow all WARNINGS and installation instructions.** Keep or give to the owner for future reference.

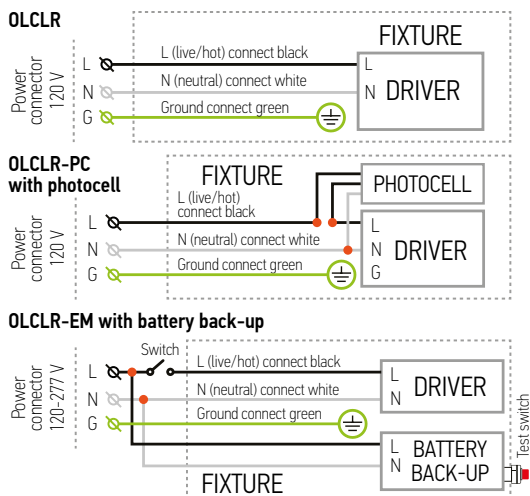
**Risk of cuts:** Wear gloves to prevent cuts or abrasions when removing from carton, handling, installing, and maintaining this product.

**Risk of electric shock:** This product must be installed in accordance with the applicable installation code by a person familiar with the construction and operation of the product and the hazards involved.

**Risk of Fire:** Minimum 194°F supply conductors. Consult a qualified electrician to ensure correct branch circuit conductor.

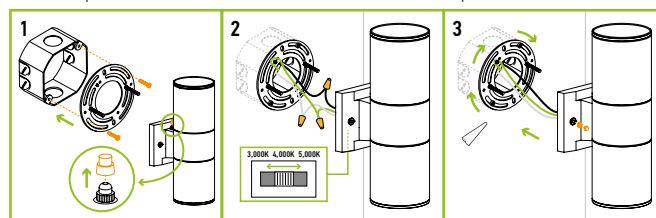
ASD® assumes no responsibility for claims arising out of improper or careless installation or handling of this product.

### ELECTRICAL SCHEMATIC DIAGRAM:



### INSTALLATION STEPS:

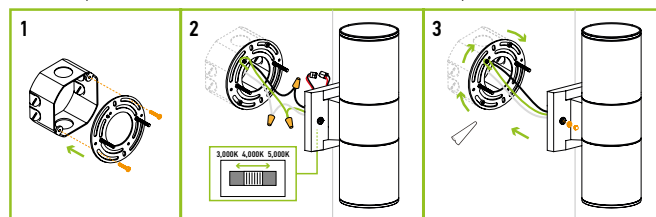
1. Screw the two mounting screws onto the mounting plate. Attach the mounting plate to the outlet box using screws. Make sure the threads of the mounting screws are facing outside when the mounting plate is attached to the outlet box. In models with photocell option remove the photocell cap to make the dusk-to-dawn sensor operate.
2. Choose needed color temperature by adjusting switch position. Connect the wires: Black to Black, White to White, Ground to Ground. Secure the connection with wire nuts.
3. Place the fixture base on the wall by aligning the protruding mounting screws through the holes on the wall plate. Put the waterproof gasket on each mounting screw. Tighten the fixture to the wall using two decorative nuts. For outdoor locations please use silicone (not included) shown in the picture below.



\* The fixture must be mounted vertically with the photocell sensor facing up.

### BATTERY BACK-UP MODELS INSTALLATION:

1. Screw the two mounting screws onto the mounting plate. Attach the mounting plate to the outlet box using screws. Make sure the threads of the mounting screws are facing outside when the mounting plate is attached to the outlet box.
2. Choose needed color temperature by adjusting switch position. Connect the LED Emergency controller to the battery back-up. Connect the wires: Black to Black, White to White, Ground to Ground. Secure the connection with wire nuts.
3. Place the fixture base on the wall by aligning the protruding mounting screws through the holes on the wall plate. Put the waterproof gasket on each mounting screw. Tighten the fixture to the wall using two decorative nuts. For outdoor locations please use silicone (not included) shown in the picture below.



\* The fixture must be mounted vertically with the test-switch facing down.

## ORDERING INFORMATION

Model	UPC	Pcs. per carton	Carton size	Carton weight	GTIN 14
ASD-OLCLR-1D9CC-BK	810050736459	6	16.7" x 15.4" x 9.6"	16.7 lb	30810050736450
ASD-OLCLR-1D9CC-BZ	810050736466	6	16.7" x 15.4" x 9.6"	16.7 lb	30810050736467
ASD-OLCLR-2D18CC-BK	810050736473	6	16.7" x 15.4" x 13.6"	19.7 lb	30810050736474
ASD-OLCLR-2D18CC-BZ	810050736480	6	16.7" x 15.4" x 13.6"	19.7 lb	30810050736481
<b>OLCLR-EM WITH BATTERY BACK-UP</b>					
ASD-OLCLR-MV-2D18CC-EM-BK	810050736794	6	16.7" x 15.7" x 13.8"	21.3 lb	30810050736795
ASD-OLCLR-MV-2D18CC-EM-BZ	810050736800	6	16.7" x 15.7" x 13.8"	21.3 lb	30810050736801
<b>OLCLR-PC WITH PHOTOCELL</b>					
ASD-OLCLR-1N9CC-PC-BK	810050736770	6	16.7" x 15.4" x 9.6"	16.7 lb	30810050736771
ASD-OLCLR-1N9CC-PC-BZ	810050738026	6	16.7" x 15.4" x 9.6"	16.7 lb	10810050738023
ASD-OLCLR-2N18CC-PC-BK	810050736787	6	16.7" x 15.4" x 13.6"	19.7 lb	30810050736788
ASD-OLCLR-2N18CC-PC-BZ	810050738033	6	16.7" x 15.4" x 13.6"	19.7 lb	10810050738030

For most up-to-date spec sheets please refer to [asd-lighting.com](http://asd-lighting.com)